

72956-1

9/3/2008

1/9



UNITED STATES ENVIRONMENTAL PROTECTION AGENCY  
WASHINGTON, D.C. 20460

SEP 03 2008

OFFICE OF  
PREVENTION, PESTICIDES AND  
TOXIC SUBSTANCES

Cristina Griffin  
Agent for,  
Nice-Pak Products, Inc.  
Two Nice Pak Park  
Orangeburg, NY 10962-1376

Subject: Sani-Towel  
EPA Registration Number 72956-1  
Your Amendment Dated July 17<sup>th</sup>, 2008  
EPA Received Date July 18<sup>th</sup>, 2008

The amendment referred to above, submitted in connection with registration under the Federal Insecticide, Fungicide, and Rodenticide Act, FIFRA, as amended, to change the precautionary and first aid statements based on existing toxicity reviews, is acceptable.

Due to all acute toxicity categories being a IV, no precautionary statements or SOPT will be needed.

A stamped copy of the labeling is enclosed for your records.

If you have any questions concerning this letter, please contact Karen M. Leavy-Munk at (703)-308-6237.

Sincerely,

A handwritten signature in black ink, appearing to read "M Swindell".

Marshall Swindell  
Product Manager 33  
Regulatory Management Branch I  
Antimicrobial Division(7510C)

ACCEPTED  
with COMMENTS  
in EPA Letter Dated:

SEP 03 2008

Under the Federal Insecticide,  
Fungicide, and Rodenticide Act as  
amended, for the pesticide,  
registered under EPA Reg. No.

72956-1

**SANI-TOWEL®**

[Alternate brand name: No Rinse Sani-Surface Sanitizing and Cleaning Wipes]  
[Alternate brand name: No Rinse Sani-Surface Shopping Cart Sanitizing Wipes]  
[NO RINSE HARD, NON-POROUS SURFACE SANITIZING TOWEL]  
[FOR RESIDENTIAL USE] [FOR HOME USE]

**ACTIVE INGREDIENTS**

n-Alkyl(C <sub>12</sub> 67%, C <sub>14</sub> 25%, C <sub>16</sub> 7%, C <sub>8</sub> , C <sub>10</sub> , C <sub>18</sub> 1%) Dimethyl Benzyl	
Ammonium Chloride .....	0.0175%
Isopropyl Alcohol.....	5.4800%
<b>OTHER INGREDIENTS</b> .....	<b>94.5025%</b>
<b>TOTAL</b> .....	<b>100.0000%</b>

KEEP OUT OF REACH OF CHILDREN

**CAUTION**

NET CONTENTS [or Net Wt.] \_\_\_\_\_oz (g) [or lbs. (kg)]  
\_\_\_\_# OF CLOTHS [WIPES] [SIZE of each cloth or wipe]

EPA Reg. No. 72956-1  
EPA Est. No.9480-NY-1  
[EPA Est. No. A=9480-NY-1, B=9480-IN-1 Alpha character will precede batch number on product container]

[Manufactured by:]  
Nice-Pak Products, Inc.  
Two Nice-Pak Park  
Orangeburg, NY 10962-1376  
[For information call: [phone number to be inserted]] [website address]

<p>Statements in brackets [ ] are optional or instructional. The terms "wipe(s)", "towel(s)", "towelette(s)", and "cloth(s)" can be used interchangeably throughout except for the product primary brand name which can be changed only by notification or amendment.</p> <p>072956-00001.20080717.EPA amend delete precautionary statement.pdf</p>	<p>Page 1 of 8</p>	<p>7/17/08</p>
---	--------------------	----------------

**DIRECTIONS FOR USE:**

It is violation of Federal law to use this product in a manner inconsistent with its labeling. [Product is ready for use, no mixing or measuring required.]

[Use one of the following as applicable to type of container:]

**TOWELETTE [or WIPE] [or TOWEL] [or CLOTH]**

**CANISTER DIRECTIONS:**

To start feed: Remove lid and discard inner seal from canister. Find center of wipe roll, remove first wipe for use, twist corner of next wipe into a point and thread through the hole in the canister lid. Pull through about one inch. Replace lid. Dispense remaining wipes as necessary by pulling out at an angle. When not in use keep center cap of lid closed to prevent moisture loss.

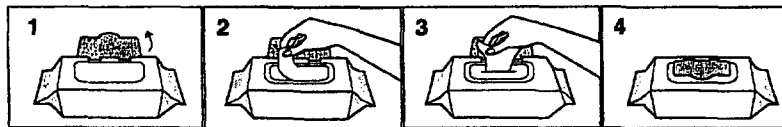
**TRAVEL PACK:**

Peel back label slowly. Pull out wipes as needed and reseal label. Unfold wipe.

**PACKET:**

Tear open packet. Unfold wipe.

**SOLO® PAK:**



DO NOT FLUSH • STORE AT ROOM TEMPERATURE  
DISPOSE OF USED WIPES IN TRASH RECEPTACLE • KEEP SOLO®  
LID CLOSED WHEN NOT IN USE

ACCEPTED  
with COMMENTS  
in EPA Letter Dated:

SEP 03 2008

Under the Federal Insecticide, Fungicide, and Rodenticide Act as amended, for the pesticide, registered under EPA Reg. No.

72956-1

**GENERIC:**

Open lid. Pull out wipe. Close lid tightly.

**CLEANING:** Wipe surface with towelette until clean. Let air dry.

**FOOD CONTACT SURFACES**

For use on pre-cleaned hard, non-porous food preparation surfaces. Surfaces may include: [Use one or more of the following:] tables, food preparation tables, counter tops, cabinets, sinks, microwaves, ranges, refrigerators and freezers, [the following uses must be preceded by the words: "outside surface[s] of " or "exterior surface[s] of ":] food mixers, bread machines, coffee machines, griddles, toasters, toaster ovens, chargrills, broilers, cooking surfaces and backsplashes, ovens, juicers, [add the following after the list of surfaces:] and other similar hard, non-porous food contact surfaces except for those excluded by this label. +

**Sanitizing food contact surfaces:** Use first towel to pre-clean and remove heavy soil. Use second towel to sanitize. Wipe enough for treated area to remain visibly wet for a minimum of 60 seconds. Let air dry. No rinsing required.

+ Do not use to sanitize glassware, cookware, and eating utensils.

Statements in brackets [ ] are optional or instructional. The terms "wipe(s)", "towel(s)", "towelette(s)", and "cloth(s)" can be used interchangeably throughout except for the product primary brand name which can be changed only by notification or amendment.

**[NON-FOOD CONTACT SURFACES]**

[Thoroughly pre-clean if surface is visibly soiled.]

For use on pre-cleaned hard non-porous surfaces. Surfaces may include: [Use one or more of the following:] Dining tables, chairs, display cabinets, garbage cans, infant high chairs, booster seats, floors, sinks, drain boards, faucets, toilet seats and rims, vanities, towel dispensers, railings, infant-changing tables, bath tubs, showers, hampers, tiled walls, telephones, playpens, cribs, diaper pails, doorknobs, shopping carts [add the following after the list of surfaces:] and other similar hard, non-porous food contact surfaces except for those excluded by this label.

[Cleaning and] **Sanitizing non-food contact surfaces:** For heavily soiled items, clean prior to sanitizing. Use towel to sanitize surface. Wipe enough for treated surfaces to remain visibly wet for 5 minutes. Use additional towels as needed to keep entire surface area wet for a full 5 minutes. Let air dry. No rinsing required.

99.9% effective in 5 minutes against Staphylococcus aureus (ATCC #6538), Salmonella choleraesuis (ATCC #10708), and Klebsiella pneumoniae (ATCC #4352) [in the presence of organic soil (5% blood serum)].

**STORAGE AND DISPOSAL**

[Use canister or packet/travel pack storage/disposal statements below depending on type of container]

[For canisters]:

Storage: Do not store near heat or open flame. When not in use keep center cap of lid closed to prevent moisture loss.

Towelette Disposal: Do not reuse towelette. Dispose of used towelette in trash. Do not flush in toilet.

Dispenser Disposal: Do not reuse empty container. Wrap container and put in trash collection.

[For packets and travel packs]:

Storage: Do not store near heat or open flame.

Towelette Disposal: Do not reuse towelette. Dispose of used towelette in trash. Do not flush in toilet.

Travel Pack [or Solo® Pak or Packet] Disposal: Put empty travel pack [or Solo® Pak or packet] in trash collection.

ACCEPTED  
with COMMENTS  
in EPA Letter Dated:

SEP 03 2008

Under the Federal Insecticide,  
Fungicide, and Rodenticide Act as  
amended, for the pesticide,  
registered under EPA Reg. No.

7 2956-1

Statements in brackets [ ] are optional or instructional. The terms "wipe(s)", "towel(s)", "towelette(s)", and "cloth(s)" can be used interchangeably throughout except for the product primary brand name which can be changed only by notification or amendment.

[All below are optional label claims (placement optional), literature and promotional statements]

- 99.9% effective against [in killing] common household bacteria
- 99.999% effective in 60 seconds against Staphylococcus aureus, Escherichia coli and Shigella boydii on cleaned, hard, non-porous food contact surfaces
- Always ready to use
- Built-in scrubbing fibers
- Clean and sanitize any room, any time
- Clean and sanitize hard non-porous surfaces all over the house [throughout your home ] [easily]
- Clean and sanitize non-porous surfaces around the house
- Clean and sanitize surfaces your family touches
- Cleans grocery carts and shopping carts
- Cleaner and sanitizing towel [or cloth]
- Cleaning and sanitizing wipes for food preparation surfaces
- Cleans and sanitizes hard non-porous surfaces after food preparation
- Cleans hard to remove stains
- Cleans, deodorizes and kills common household bacteria
- Cloth
- Decorative, stay moist package
- Easily clean and sanitize hard non-porous surfaces around the house
- Easy and effective kitchen sanitizing
- Easy flip top lid
- Effective [effectively] [in] sanitizing [sanitizes ] non-porous kitchen surfaces
- Effective daily cleaner
- Effective on non-porous food prep surfaces
- [Effectively] neutralizes 99.9% of common household bacteria
- Effectively neutralizes 99.9% of common household bacteria that live in your house
- Eliminates odors
- Eradicates 99.9% of common household bacteria
- Everyday, every room sanitizer
- Fast and easy way to clean and sanitize around the house
- Food preparation surfaces
- Food-contact surface wipes
- Food-contact surfaces
- Food-preparation surface sanitizer(s) [wipes]
- For use in supermarkets, grocery stores, retail stores and mass merchants
- For use on hard non-porous surfaces in kitchens [and /or bathrooms]
- For use on pre-cleaned hard, non-porous food contact surfaces
- For use to sanitize shopping carts
- For your toughest kitchen and bathroom messes
- Great for on-the-go cleaning
- Great on-the-go sanitizer
- Hard non-porous surface cleaning and sanitizing [kitchen sanitizing ] made easy
- Heavy duty cleaner [cleaning]
- Ideal for cleaning and sanitizing family spaces
- Ideal for sanitizing family surfaces: highchairs, booster seats, strollers, car seats, cribs, dining tables, kitchen surfaces
- Ideal for sanitizing food [prep] or [contact] surfaces
- Ideal for sanitizing hard non-porous food contact surfaces (tabletops, countertops, sinks, kitchen appliance exteriors, tilework)
- Ideal for shopping cart handles, baby seats, high chairs
- Kills 99.999% of Staphylococcus aureus (ATCC #6538), Escherichia coli (ATCC #11229) and Shigella boydii (ATCC #9207) in 60 seconds on pre-cleaned [hard, non-porous] food contact surfaces
- Kitchen sanitizer(s) that need no rinsing

ACCEPTED  
with COMMENTS  
in EPA Letter Dated:

SEP 03 2008

Under the Federal Insecticide, Fungicide, and Rodenticide Act as amended, for the pesticide, registered under EPA Reg. No.

7 2956-1

Statements in brackets [ ] are optional or instructional. The terms "wipe(s)", "towel(s)", "towelette(s)", and "cloth(s)" can be used interchangeably throughout except for the product primary brand name which can be changed only by notification or amendment.

Kitchen sanitizing wipes  
 Kitchen surface [sanitizing] wipes [towels]  
 Kitchen surface sanitizer(s)  
 Kitchen surfaces  
 Large, thick, and quilted for everyday cleaning  
 Leaves a shine every time  
 Leaves no streaks  
 Multi-room sanitizer [sanitizing] cleaner  
 No mixing or measuring required  
 No streaking  
 No rinse food contact surface sanitizer  
 No-rinse kitchen [surface] sanitizer(s)  
 No-rinse kitchen sanitizing wipes  
 No-rinse sanitizer(s) for food contact [food prep] [kitchen] surfaces  
 No-rinse sanitizing for kitchen surfaces  
 No-rinse sanitizing wipes  
 One-step no rinse sanitizer for hard, non-porous non-food contact surfaces  
 On-the-go sanitizer  
 Pre-measured, pre-moistened sanitizing towels for use on [cleaned] hard, non-porous [food contact] surfaces  
 Pre-moistened [cleaner and] sanitizing towel [or cloth]  
 Pre-soaked [sturdy] cloth [or towel]  
 Pre-sprayed [sturdy] cloth [or towel]  
 Pre-sprayed scrubbing towels  
 Pre-wetted [towel or cloth]  
 Quilted pre-sprayed towels  
 Ready to use. Just pull, wipe and discard  
 Recommended for use on cleaned hard, non-porous food contact surfaces in kitchens  
 Recommended for use on hard, non-porous non-food contact surfaces as a one step sanitizer  
 Removes tough stains  
 Sanitizer [sanitizing] home [house] [household] [surface] cleaner  
 Sanitizes as it cleans food prep surfaces  
 Sanitizes hard non-porous food prep [kitchen] surfaces [easily]  
 Sanitizes surfaces that come in contact with food without requiring a rinse  
 Sanitizing clean-ups for family areas [spaces]  
 Sanitizing hard non-porous food prep [kitchen] surfaces is easy  
 Sanitizing wipes for family areas  
 Sanitizing wipes for family contact [food contact] [food-preparation] surfaces  
 Sanitizing wipes for hard non-porous surfaces  
 Sanitizing wipes for surfaces families touch  
 Scrubbing house [household] [surface] cleaner  
 The fast, easy and effective way to sanitize cleaned, hard non-porous surfaces  
 The sanitizing wipes that make cleanups easy  
 Towel  
 Use in the kitchen  
 Versatile sanitizer [sanitizing] cleaner  
 Wipes for food-contact surfaces  
 Wipes out 99.9% of common household bacteria  
 Wipes out 99.9% of bacteria that commonly infect your home

**ACCEPTED**  
**with COMMENTS**  
**in EPA Letter Dated:**  
**SEP 03 2008**  
 Under the Federal Insecticide,  
 Fungicide, and Rodenticide Act as  
 amended for the purposes,  
 registered under EPA Reg. No.  
**72956-1**

Statements in brackets [ ] are optional or instructional. The terms "wipe(s)", "towel(s)", "towelette(s)", and "cloth(s)" can be used interchangeably throughout except for the product primary brand name which can be changed only by notification or amendment.

072956-00001.20080717.EPA amend delete precautionary statement.pdf : Page 5 of 8 7/17/08

Specifically designed for sanitizing cleaned hard, non-porous surfaces throughout the household. [99.9%] effective in 5 minutes against common household bacteria: Staphylococcus aureus, Salmonella choleraesuis, and Klebsiella pneumoniae. Common uses include: doorknobs, chairs, toilet seats and rims, railings, infant high chairs, infant – changing tables, diaper pails, playpens, booster seats, strollers, cribs, and toy chests.

Specifically designed for sanitizing cleaned hard, non-porous surface areas where food is normally prepared. 99.9% effective in 60 seconds against common Kitchen bacteria: Staphylococcus aureus, Escherichia coli (E coli), Salmonella choleraesuis, Shigella boydii, and Klebsiella pneumoniae in the presence of organic soil (heavy soil must be pre-cleaned first). Common uses include: kitchen counters, tables, cooking surfaces, sinks, shopping cart handles, baby seats, and high chairs.

ACCEPTED  
with COMMENTS  
in EPA Letter Dated:

SEP 03 2008

Under the Federal Insecticide,  
Fungicide, and Rodenticide Act as  
amended, for the pesticide,  
registered under EPA Reg. No.

72956-1

Statements in brackets [ ] are optional or instructional. The terms "wipe(s)", "towel(s)", "towelette(s)", and "cloth(s)" can be used interchangeably throughout except for the product primary brand name which can be changed only by notification or amendment.

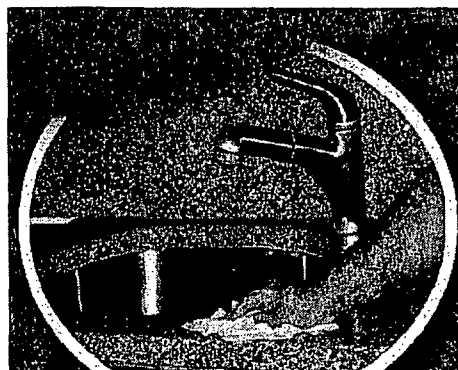
OPTIONAL GRAPHICS

[The following graphics and statements are optional. They may be placed anywhere on label/container.]

ACCEPTED  
with COMMENTS  
in EPA Letter Dated:

SEP 03 2008  
Under the Federal Insecticide,  
Fungicide, and Rodenticide Act as  
amended, for the pesticide,  
registered under EPA Reg. No.

72956-1



KITCHEN SURFACES

Kitchen Surfaces



TELEPHONES

Telephones



TOILET SEATS

Toilet Seats



HIGH CHAIRS/CRIBS

High Chairs/Cribs

TOY CHESTS

Toy Chests



CHANGING TABLES

Changing Tables

Statements in brackets [ ] are optional or instructional. The terms "wipe(s)", "towel(s)", "towelette(s)", and "cloth(s)" can be used interchangeably throughout except for the product primary brand name which can be changed only by notification or amendment.



OPTIONAL GRAPHICS

[The following graphics and statements are optional. They may be placed anywhere on label/container.]



ACCEPTED  
with COMMENTS  
in EPA Letter Dated:  
**SEP 03 2008**

Under the Federal Insecticide,  
Fungicide, and Rodenticide Act as  
amended, for the pre-mix,  
registered under EPA Reg. No.  
**72956-1**



[This graphic shows use of the towel dispenser.]

**NOT A BABY WIPE**

**NOT FOR USE ON SKIN**

Statements in brackets [ ] are optional or instructional. The terms "wipe(s)", "towel(s)", "towelette(s)", and "cloth(s)" can be used interchangeably throughout except for the product primary brand name which can be changed only by notification or amendment.

072956-00001.20080717.EPA amend delete precautionary statement.pdf Page 8 of 8 7/17/08