

72155-88

4/30/2009

1/9



U.S. ENVIRONMENTAL PROTECTION AGENCY
Office of Pesticide Programs
Registration Division (7505P)
Ariel Rios Building
1200 Pennsylvania Ave., NW
Washington, D.C. 20460

EPA Reg. Number: 72155-88
 Date of Issuance: APR 30 2009

NOTICE OF PESTICIDE:
 Registration
 Reregistration
 (under FIFRA, as amended)

Term of Issuance: **Conditional**
 Name of Pesticide Product:
Lawn 3iP Herbicide Ready-to-Use

Name and Address of Registrant (include ZIP Code):
Bayer Advanced
2 T.W. Alexander Drive
RTP, NC 27709

Note: Changes in labeling differing in substance from that accepted in connection with this registration must be submitted to and accepted by the Registration Division prior to use of the label in commerce. In any correspondence on this product always refer to the above EPA registration number.

On the basis of information furnished by the registrant, the above named pesticide is hereby registered/reregistered under the Federal Insecticide, Fungicide and Rodenticide Act. Registration is in no way to be construed as an endorsement or recommendation of this product by the Agency. In order to protect health and the environment, the Administrator, on his motion, may at any time suspend or cancel the registration of a pesticide in accordance with the Act. The acceptance of any name in connection with the registration of a product under this Act is not to be construed as giving the registrant a right to exclusive use of the name or to its use if it has been covered by others.

This product is conditionally registered in accordance with FIFRA sec. 3(c)(7)(A) provided that you:

1. Submit and/or cite all data required for the registration/reregistration review of this product when the Agency requires all registrants of similar products to submit data.
2. Make the following label changes:
 - A. Add the phrase "EPA Registration No.72155-88" to the label and the Establishment Number before you release the product for shipment.
 - B. Add the "Net Contents" to the labeling prior to releasing this product for shipment.
 - C. Delete the words "exclusive" and "unique" that describes the formula on page 2

COMMENTS CONTINUED ON PAGE 2 OF THIS NOTICE OF REGISTRATION.

Signature of Approving Official:
 Joanne I. Miller
 Product Manager 23
 Herbicide Branch
 Registration Division (7505P)

John V. Montano for

Date:
 APR 30 2009

page 2

EPA Reg. No. 72155-88

Comments Continued:

and the claim "has never been easier" also on page 2.

- 3. Submit the data listed below:

Submit the following data required for the registration of this pesticide product within 1 year from the date of this Notice of Registration:

<u>EPA Guideline Data Number</u>	<u>Guideline Descriptor</u>
830.6317	Storage Stability Study
830.6320	Corrosion Characteristics

Observations should be made at 0, 3, 6, 9 and 12 month intervals and submit the results electronically along with the hard copy.

- 4. Submit to the EPA Analytical Laboratory, 701 Mapes Road, Fort Meade, MD 20755-5350 a validated enforcement analytical method (EPA Guidelines 830.1800). within 6 months from the date of this Notice of Registration.
- 5. Submit one (1) copy of the final printed labeling before you release this product for shipment.

If these conditions are not complied with, the registration will be subject to cancellation in accordance with FIFRA section 6(e). Your release for shipment of the product under the enclosed stamped copy of the label constitutes acceptance of these conditions.

A stamped copy of the label is enclosed for your records.

Enclosure



3/9

(FRONT PANEL)

Lawn 3iP Herbicide Ready-to-Use

[ABN: Season Long Weed Control for Lawns Ready-to-Use or Southern Season Long Weed Control for Lawns Ready-to-Use]

▪ Editorial Note – Marketing Claims Positioned Here

ACTIVE INGREDIENTS:

2,4-D, dimethylamine salt ¹	0.310%
Dicamba, potassium salt ²	0.033%
Mecoprop-p, potassium salt ³	0.072%
Isoxaben ⁴	0.069%

OTHER INGREDIENTS:	99.516%
TOTAL	100.00%

[Active ingredient statement]:

THIS PRODUCT CONTAINS:

- 0.0215 lb 2,4-D acid equivalent per gal or 0.258%
- 0.0023 lb Dicamba acid equivalent per gal or 0.028%
- 0.0052 lb Mecoprop-p acid equivalent per gal or 0.062%
- 0.0058 lb Isoxaben per gal or 0.069%
- Isomer Specific by AOAC Method.

- ¹CAS No. 2008-39-1
- ²CAS No. 10007-85-9
- ³CAS No. 66423-05-0
- ⁴CAS No. 82558-50-7

Note: If the design, format, or small size of the container labels makes it impractical to present the entire ingredient statement on the front panel, then the sub statement will be placed on the back panel.

Net Contents: Various (up to 2 gal)

KEEP OUT OF REACH OF CHILDREN

CAUTION

See back panel for additional precautionary statements.

Editorial Note – [Bracketed text] is optional language

ACCEPTED
with **COMMENTS**
In EPA Letter Dated:

APR 30 2009
Under the Federal Insecticide,
Fungicide, and Rodenticide Act
as amended, for the pesticide
registered under EPA Reg. No.

72155-88


4/9

(Back Panel)

OPEN Resealable Label for Directions & Precautions **PRESS TO RESEAL**

[The days of multiple applications to kill weeds are over!] Just one application of Lawn 3iP Herbicide Ready-to-Use's [exclusive] [unique], [2-in-1], [3-in-1] [4-in-1] formula kills & prevents lawn weeds up to 6 months! [It delivers Season Long Weed Control that's simple and easy to use] [and it will not harm your lawn when used as directed]. Ready-to-use – no mixing, no measuring, no messy cleanup. [Rainproof in one hour.] Controlling weeds in your lawn [up to 6][X] months] has never been easier!



QUICK FACTS	
<i>Editorial Note – Marketing Claims Positioned Here</i>	
KILLS & PREVENTS	Kills over 200 broadleaf weed such as chickweed, dandelion, dollarweed, henbit, clover & spurge Prevents common broadleaf weeds & grass weeds including crabgrass & annual bluegrass.
WHERE TO USE	ON ESTABLISHED LAWNS without harming lawn grasses †(Do not use on carpetgrass, Floratam variety of St. Augustinegrass, dichondra or desirable clovers.)
	For questions or comments, call toll-free 1-877 BayerAG (1-877-229-3924) or visit us on-line at www.BayerAdvanced.com

FOR OUTDOOR RESIDENTIAL USE ONLY

[Active ingredient statement]

THIS PRODUCT CONTAINS:

- 0.0215 lb 2,4-D acid equivalent per gal or 0.258%
- 0.0023 lb Dicamba acid equivalent per gal or 0.028%
- 0.0052 lb Mecoprop-p acid equivalent per gal or 0.062%
- 0.0058 lb Isoxaben per gal or 0.069%




Isomer Specific by AOAC Method.

EPA Reg. No. 72155-XX

EPA Est. No.

DIRECTIONS FOR USE	
It is a violation of Federal law to use this product in a manner inconsistent with its labeling.	
BEFORE YOU USE	<ul style="list-style-type: none"> • Use this product only on established lawns. • Apply when the air is calm to avoid spray drift onto desirable plants.
HOW TO USE Shake Well Before Use	<ul style="list-style-type: none"> • Turn spray nozzle to coarse spray. • Hold sprayer about 12 inches from existing weeds. Spray weeds and entire surrounding area that you want to keep weed free [for up to 6 months]. Spray until thoroughly wet. Note: Overlapping could temporarily damage bentgrass, centipedegrass, and St. Augustinegrass (not for use on Floratam) • Wait 2 days after applying then activate residual barrier by watering with ¼ - ½" of irrigation.
[FOR BEST RESULTS]	<p>[WHEN TO APPLY]</p> <ul style="list-style-type: none"> • [Spray when weeds are small and actively growing – temperatures are between 50 - 90°F] • [Do not apply while grass is emerging from dormancy.] • [This product also prevents crabgrass when applied early spring before the fourth mowing or before the temperatures are regularly in the 80's.] • [This product also prevents annual bluegrass (Poa annua) when applied August – December.] • [Certain hard-to-kill weeds may be retreated in 2 weeks if necessary.] [Spray individual weeds using this product in a tank sprayer or with Lawn 3iP Herbicide Ready-to-Use.] • [Heavy raking will disturb the weed preventative barrier and reduce the effectiveness of this product.] • [Newly seeded lawn may be sprayed after fourth mowing.] • [Bare spots may be seeded 60 days after application.] <p>[MOWING]</p> <ul style="list-style-type: none"> • [Do not mow for 1 to 2 days after spraying.] • [Clippings from the first three mowings should be left on the treated area. Do not use the clippings from the treated areas as mulch or compost around flowers, ornamentals, trees, or in vegetable gardens.] <p>[WATERING]</p> <ul style="list-style-type: none"> • [If lawn is dry, water 1 to 2 days before using this product.] • [Rain or watering 1 hour after application will not wash away effectiveness.]
HOW IT WORKS	This product contains a proven blend of three weed killers to kill existing weeds Plus a residual herbicide to keep them from coming back for up to 6 months. Weeds begin to wilt & die within [24] hours [and are completely dead in [14 – 28] days]. And, it won't harm your lawn when used as directed.

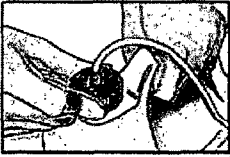
[optional instructions for use with 1 gal sprayer]

[For 1 gallon]			
ATTACH SPRAYER	SPRAY	AFTER USE	
<ul style="list-style-type: none"> • Remove sprayer from bottle and extend hose. • Open flip-cap on bottle. • Insert hose and plug into flip-cap opening until it snaps into place. 	<ul style="list-style-type: none"> • Adjust nozzle to stream or spray position. • Point sprayer downward and squeeze trigger repeatedly until liquid is released. 	<ul style="list-style-type: none"> • Turn sprayer nozzle to X (off) position. • Do not unplug hose. • Return sprayer to bottle. Sprayer will snap into place. 	

[optional instructions for use with battery-operated sprayer]

Battery-operated trigger sprayer: This product is applied directly from the container using the battery-operated trigger sprayer. The sprayer is packaged with the battery installed. To use, remove the cap from the container, insert the pickup tube and thread cap attached to pickup tube to the container. Move the safety lock located below the trigger to the "ON" position. Pull trigger, waiting several seconds for fluid to prime. Adjust the sprayer tip to deliver coarse spray droplets. To store, move the safety lock located below the trigger to the "LOCK" position.

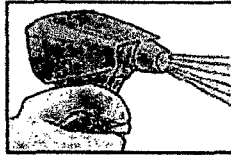
IMPORTANT! – READ BEFORE USE



How to Attach Sprayer to Bottle ■ Remove Power Sprayer and hose from side carrier. ■ Replace bottle cap with cap attached to Power Sprayer hose.



Prepare to Spray ■ Point Sprayer away from body. ■ Adjust nozzle to desired setting. Do not turn past "X" position. ■ Slide safety switch to ON position.



Spray ■ Squeeze trigger to dispense product. Sprayer may require several seconds to prime before spraying.

After Use


■ Slide safety switch to LOCK position. ■ Return Power Sprayer to side carrier for storage.



4 AA Batteries included
For important battery information – see booklet.

<p>PROPER USE OF BATTERIES</p> <p><Drawing of Battery></p>	<p>Never mix old batteries with new. Do Not mix Alkaline with Standard (carbon zinc) or Rechargeable (nickel cadmium) batteries. When replacing batteries, follow diagram inside battery compartment that is located at the bottom of the sprayer. When storing sprayer at end of season, remove batteries to prevent leakage. Follow manufacturer's recommendations for disposal of batteries.</p>
---	---

<p>KILLS & PREVENTS</p>	
<p>[Weeds presented here to be chosen from Appendix 1.]</p> <p>and other broadleaf weeds</p>	


	<p>Do not apply this product in a way that will contact any person or pet, either directly or through drift. Keep people and pets out of the area during application. Do not allow people or pets to enter the treated area until sprays have dried.</p>
---	--

<p>PRECAUTIONARY STATEMENTS</p>	
<p style="text-align: center;">CAUTION</p> <p style="text-align: center;">Hazards to Humans and Domestic Animals</p>	
<ul style="list-style-type: none"> • Harmful if absorbed through skin or if swallowed. • Causes moderate eye irritation. • Avoid contact with skin, eyes, or clothing. • Wash thoroughly with soap and water after handling and before eating, drinking, chewing gum, using tobacco or using the toilet. • Remove and wash contaminated clothing before reuse. 	

2/9

FIRST AID +	
If on Skin	<ul style="list-style-type: none"> ▪ Take off contaminated clothing. ▪ Rinse skin immediately with plenty of water for 15 – 20 minutes. ▪ Call a poison control center or doctor for further treatment advice.
If Swallowed	<ul style="list-style-type: none"> ▪ Call a poison control center or doctor immediately for treatment advice. ▪ Have person sip a glass of water if able to swallow. ▪ Do not induce vomiting unless told to do so by a poison control center or doctor. ▪ Do not give anything by mouth to an unconscious person.
If in Eyes	<ul style="list-style-type: none"> ▪ Hold eye open and rinse slowly and gently with water for 15 to 20 minutes. ▪ Remove contact lenses, if present, after the first 5 minutes, then continue rinsing eye. ▪ Call a poison control center or doctor for further treatment advice.
<p>NOTE: Have the product container or label with you when calling a poison control center or doctor or going for treatment. You may call toll-free 1-877-229-3763 for medical emergency information.</p> <p>Active Ingredients: 0.310% 2,4-D, dimethylamine salt (CAS # 2008-39-1), 0.033% Dicamba, potassium salt (CAS # 10007-85-9), 0.072% Mecoprop-p, potassium salt (CAS # 66423-05-0) and 0.069% Isoxaben (CAS # 82558-50-7).</p>	

ENVIRONMENTAL HAZARDS
<ul style="list-style-type: none"> • This product is toxic to fish and aquatic invertebrates. Do not apply directly to water. • Drift or runoff maybe hazardous to aquatic organisms in water adjacent to treated areas. Do not contaminate water when disposing of equipment washwaters or rinsate. • To protect the environment, do not allow pesticide to enter or run off into storm drains, drainage ditches, gutters or surface waters. Applying this product in calm weather when rain is not predicted for the next 24 hours will help to ensure that wind or rain does not blow or wash pesticide off the treatment area.

Important – Directions for Storage and Disposal	
Storage Conditions	Store in original container in a cool, dry place, out of the reach of children, preferably a locked storage cabinet. Protect from freezing.
Disposal 	<p>If empty: Non-refillable container. Do not reuse or refill this container. Place in trash or offer for recycling if available.</p> <p>If partly filled: Call your local solid waste agency or toll free 1-877-229-3724 for disposal instructions. Never place unused product down any indoor or outdoor drain.</p>

NOTICE: Research and testing have determined that the "Directions for Use" are appropriate for the proper use of this product under expected conditions. To the extent consistent with applicable law, the Buyer assumes responsibility for lack of performance or safety if not used according to the directions.

***Money Back Guarantee:** If you are not satisfied with this product, we will gladly refund your original purchase price.



A Business Unit of Bayer CropScience LP
 P.O. Box 12014, 2 T.W. Alexander Drive
 Research Triangle Park, North Carolina 27709

Lawn 3iP RTU (PENDING) 05/08/08, Resubmitted 04/01/09, Resubmitted 04/13/09

Appendix 1

KILLS			
Annual Bluegrass (<i>Poa annua</i>) ²	Cocklebur	Morningglory	Speedwell ¹
Annual Yellow Sweetclover	Common Groundsel ²	Mouseear Hawkweed	Spiny Amaranth
Aster	Common Mullein	Mugwort	Spiny Cocklebur
Austrian Fieldcress	Crabgrass ²	Musk Thistle	Spiny Sowthistle
Barnyardgrass ²	Creeping Charlie	Mustard	Spotted Catsear
Bedstraw	Creeping Jenny	Narrowleaf Plantain	Spotted Spurge ¹
Beggarticks	Cudweed ¹	Narrowleaf Vetch	Spurweed
Betony, Florida	Curly Dock	Nettle	Stinging Nettle
Bindweed, Field	Daisy, English	Orange Hawkweed	Strawberry, India Mock
Bird Vetch	Daisy, Fleabane	Oriental Cocklebur	Tall Nettle
Bitter Wintercress	Daisy, Oxeye	Oxalis ¹ Panicle Willowweed ²	Tall Vervain
Bittercress, Hairy ¹	Dandelion ¹	Parsley-piert	Tansy Mustard
Bitterweed	Desert Rockpurslane ²	Parsnip	Tanweed
Black-eyed Susan	Dichondra	Pearlwort	Telegraphplant ²
Blackleaved Fleabane ²	Dogbane	Pennsylvania Smartweed ²	Texas Panicum ²
Black Nightshade ²	Dogfennel	Pennycress	Thistle
Black Medic	Dollarweed	Pennywort	Trailing Crownvetch
Black Mustard	Elderberry	Pepperweed	Tumble Mustard
Blackseed Plantain	Fall Panicum ²	Pigweed ¹	Tumble Pigweed
Blessed Thistle	False Dandelion	Pineappleweed ²	Velvetleaf ¹
Bloodflower Milkweed	False Flax	Pineywoods Bedstraw	Venice Mallow
Blue Lettuce	False Sunflower	Plains Coreopsis (Tickseed)	Virginia Buttonweed
Blue Vervain	Fiddleneck ¹	Plantain ¹	Virginia Creeper
Bracted Plantain ¹	Florida Pusley	Poison Ivy	Virginia Pepperweed ¹
Brassbuttons	Frenchweed	Poison Oak	Water Pennywort
Bristly Oxtongue	Galinsoga	Pokeweed	Wavyleaf Bullthistle
Broadleaf Dock	Goathead	Poorjoe	Western Clematis
Broadleaf Plantain	Goldenrod	Prairie Sunflower	Western Salsify
Broomweed	Ground Ivy	Prickly Lettuce ¹	White Mustard
Buckhorn	Gumweed	Prickly Sida	Wild Aster
Buckhorn Plantain	Hairy Fleabane ¹	Prostrate Knotweed ¹	Wild Buckwheat
Bulbous Buttercup	Hawkweed	Prostrate Pigweed	Wild Carrot
Bull Thistle	Healall	Prostrate Spurge	Wild Celery ²
Bullnettle	Heartleaf Drymary	Prostrate Vervain	Wild Four-o'clock
Burclover	Heath Aster	Puncturevine	Wild Garlic
Burdock	Hedge Bindweed	Purslane, Common ¹	Wild Geranium
Burning Nettle	Hedge Mustard	Ragweed ¹	Wild Lettuce
Burweed ¹	Hemp	Red Sorrel	Wild Marigold
Buttercup	Henbit ¹	Redroot Pigweed	Wild Mustard ¹
Buttonweed	Hoary Cress	Redstem Filaree ¹ Rough	Wild Oat ²
Canada Thistle	Hoary Plantain	Cinquefoil	Wild Onion
Carolina Geranium	Hoary Vervain	Rough Fleabane ¹	Wild Parsnip
Carpetweed	Horsenettle	Russian Pigweed	Wild Radish ¹
Catchweed Bedstraw	Horseweed ²	Russian Thistle ¹	Wild Rape
Catnip	Italian Ryegrass ²	Scarlet Pimpernel	Wild Strawberry
Catsear	Jimsonweed	Scotch Thistle	Wild Sweet Potato
Chickweed, Common ¹	Junglerice ²	Sheep Sorrel	Wild Vetch
Chickweed, Mouseear	Knawel	Shepherdspurse ¹	Witchgrass ²
Chicory	Knotweed	Sibara ²	Woodsorrel ¹
Cinquefoil	Kochia	Slender Plantain	Wooly Croton
Clover ¹	Lambsquarters ¹	Smallflower Galinsoga	Wooly Morningglory
Clover, Crimson ¹	Lanceleaf Groundcherry ²	Smooth Dock	Wooly Plantain
Clover, Hop ¹	Lespedeza	Smooth Pigweed	Wormseed
Clover, Red ¹	London Rocket ²	Sorrel	Yarrow
Clover, Strawberry ¹	Mallow ¹	Southwest Cupgrass ²	Yellow Foxtail ²
Clover, Sweet ¹	Matchweed	Sowthistle ¹	Yellow Rocket
Clover, White ¹	Mexicanweed	Spanishneedles	Yellowflower Pepperweed
Cockle	Milk Vetch		and other broadleaf weeds
			¹ Kills & Prevents
			² Prevents only

9/9

Appendix 2

Optional Marketing Claims:

- Keep from freezing.
- Kills [Controls] even the tough weeds...roots and all!
- Kills Broadleaf Weeds
- Kills Hard-to-Control Weeds
- Systemic [Herbicide] [Activity]
- Kills Dandelion, Clover, plus 200 Other listed Weeds
- Kills the root.
- Water based.
- Kills [Controls] [200+] broadleaf weeds [to the root].
- Proven performance
- Simple, [Convenient], [Easy] to use
- Two-in-One Product that Kills Weeds and Stops them from coming back
- 3-in-1 Product: Kills Weeds, Prevents New Weeds [up to 6 Months] & Prevents Crabgrass
- New [Formulation]!
- Kills 200+ Weeds (to the root)
- Ideal for spot treatment
- [Brand] New [Formula]
- Rainproof in 1 Hour
- Starts Working Immediately
- All Weather Formula (rainproof in 1 hour)
- Protects your lawn from weeds up to 6 months
- 100% Satisfaction Guaranteed* (or your money back)
- Season Long Weed Control [with 1 Application]
- 1 Application Provides Season Long [Weed] Control
- Kills [& Prevents] Weeds Up to 6 Months
- Kills Weeds [& Prevents New Weeds] [from Coming Back] [up to 6 months]
- Keeps weeds out [of your lawn] up to 6 months
- [Exclusive], [Unique] [Proprietary] [2-in-1] [3-in-1] [4-in-1] Formula
- Prevents [New] Weeds up to 6 Months
- Weed Free Lawn [Up to 6 Months]
- Crabgrass Free Lawn [Up to 6 Months]
- Visible Results in 24 Hours
- Prevents Crabgrass [up to 6 months]
- Season Long Crabgrass Control
- PLUS Prevents Crabgrass!
- Prevents Crabgrass All Season
- Kills Over 200 Lawn Weeds in One Easy Step
- Kills the weeds not the lawn†
- Won't Harm your Lawn†
- Won't Harm Lawns† (when used as directed)
- Kills [Current] Weeds to the Root
- Kills [Current] [Existing] Weeds [Up to 6 Months]
- Prevents Grasses Up to 6 Months
- SmartTrack™ Marker Shows Treated Weeds
- Contains SmartTrack™, a Non-Staining Marker [that Indicates Where You've Sprayed]
- Guaranteed* not to harm lawns†
- Season Long Weed Control [Killer]
- Extended Weed Control [Killer]
- [Up to] 6 Month Weed Control
- Targeted Weed Control
- Easy to Use Power Sprayer
- Easy to Use
- No Pumping
- Battery Powered Sprayer
- Targets Weeds
- Fast Coverage
- Ideal for Small Areas
- No messy Cleanup
- Easy & Fast Coverage
- Tough weed protection
- Faster [Coverage] Than Pull & Spray
- Just Point & Shoot
- Save Time & Energy
- Always Ready-To-Spray
- No More Squeeze, Squeeze, Squeeze
- The Easiest Way to Spray
- No Pulling – Just Point & Shoot
- No More Tired Hands
- No [More] Hand Fatigue
- Revolutionary [Applicator] [Sprayer]
- Use on Bermudagrass, Centipede, St. Augustine and Zoysia lawns.
- Won't harm listed lawns [when used as directed] †