

71995-47

10/13/2011

i/28



UNITED STATES ENVIRONMENTAL PROTECTION AGENCY  
WASHINGTON, D.C. 20460

OFFICE OF CHEMICAL SAFETY  
AND POLLUTION PREVENTION

Dawn Fee-White  
Monsanto Company  
1300 I (Eye) Street, NW  
Suite 450 East  
Washington, DC 20005

10-13-11

Subject: Label Amendment / RD 1653 Herbicide  
EPA Reg. No.: 71995-47

Dear Ms. Fee-White:

The amended labeling referred to above, submitted in connection with registration under the Federal Insecticide, Fungicide, and Rodenticide Act, as amended, is acceptable.

Submit one copy of the final printed label for the record before you release the product for shipment. A stamped copy of the label is enclosed for your records. This label supersedes all previously accepted labels. If these conditions are not complied with, the registration will be subject to cancellation in accordance with FIFRA section 6(e). Your release for shipment of the product constitutes acceptance of these conditions. If you have any questions please call Erik Kraft at 703-308-9358 or email at Kraft.Erik@epa.gov.

Sincerely,

A handwritten signature in black ink, appearing to read "Kable Bo Davis", written over a horizontal line.

Kable Bo Davis  
Product Manager 25  
Herbicide Branch  
Registration Division (7505P)

071995-00047.20110901AmendWand

[Editorial Notes: Bracketed text [ ] is for internal use or serves as a 'place holder' for graphics. Parenthetical text ( ) denotes optional wording.]

[Refer to APPENDIX 1 for consolidated list of label claims.]

[Refer to APPENDIX 2 for packaging related claims.]

[Refer to APPENDIX 3 for packaging assembly and use instructions.]

<p><b>RD 1653 Herbicide</b>  <i>[Alternate Brand names]</i></p> <p>Roundup Ready-To-Use Extended Control  Roundup Ready-To-Use Extended Control Weed &amp; Grass Killer Plus Weed Preventer II</p>
--

Keep Out Of Reach Of Children

### CAUTION

See back panel (booklet) for additional precautionary statements. (Read precautions and directions on back label.)

#### Active Ingredients

Glyphosate, isopropylamine salt .....	1.000%
Pelargonic acid and related fatty acids .....	2.000%
Imazapic, ammonium salt .....	0.017%
<b>Other Ingredients</b> .....	<b>96.983%</b>

NET [ ] (GAL) (FL OZ)

Ppn  
Spec #

[Lot number will be ink jet onto bottle]  
[Back Label Cover]

Open (booklet for details)  
Resealable Label for Directions and Precautions  
Press to Reseal

**ACCEPTED**

10-13-11

Under the Federal Insecticide,  
Fungicide, and Rodenticide Act,  
as amended, for the pesticide  
registered under  
EPA Reg. No. 71995-47

071995-00047.20110901AmendWand

[Pump 'N Go Only] (Insert Generic Logo)

The Fast & Easy Way to Kill Weeds!  
Pump N Go® sprayer provides up to 5 [insert #] minutes of continuous spray!  
Extendable wand provides greater accuracy without bending over.

(Insert Generic Logo)

**Did You Know?**

[Insert product claim from Appendix 1]

[OPTIONAL BACK COVER SECTION]

**HOW IT WORKS**

**IMPORTANT: To prevent new weeds and grasses from growing YOU MUST SPRAY THE ENTIRE AREA you want to control (keep free of weeds), NOT JUST the emerged (existing) weeds.**

Dual Action Formula Works 2 (Two) Ways:

1. Kills existing weeds and (&) grasses, roots and (&) all  
[Optional graphics]
2. Prevents new weeds from growing for up to 4 months by creating an invisible barrier (in the soil)  
[Optional graphics]

**WHERE (AND HOW) TO USE**

Apply (spray) this product [Insert brand name] (to) both existing weeds and weed-prone areas where weeds have not yet appeared.

[Optional illustrations of where / how to use]:

[Optional text] (Insert color) color represents area to be sprayed to receive 4 month weed-free control.

[Optional graphics of treatment sites]

- Driveway(s) (,walkways,) and sidewalk cracks
- Tree rings (Around trees) and mulched areas
- Patios and paths
- Gravel areas
- Along fence lines

[Optional text] **Note:** Product goes on clear and will not stain. (Insert color) (highlight) color shown for illustration purposes only.

**WHERE NOT TO USE**

In areas that will be planted or seeded within 4 months.  
Around un-established plants, shrubs or trees

071995-00047.20110901AmendWand

[Optional text] See inside booklet for details

Phone/computer icon

**Questions, Comments or Information call**

[insert contact telephone number]

Visit us on the web at [www.roundup.com](http://www.roundup.com)

[PNG ONLY can be placed on cover or inside for both English & Spanish]

This bottle may contain an anti-theft device, either inside or on the back of the bottle. It does not affect product performance.

Este envase puede contener un dispositivo contra robos, ya sea adentro o en la parte de atrás del mismo. Esto no afecta los resultados el producto.

©(date) MONSANTO COMPANY

Produced for Monsanto Company

Lawn & Garden Products

P.O. Box 418, Marysville, OH 43041

PPN

LB #

EPA Reg. No. 71995-47

EPA Est. 239-IA-3<sup>I</sup>, 58996-MO-1<sup>A</sup>, 239-MS-001<sup>M</sup>

Superscript is first letter of lot number

Made in USA

2D code

UPC

071995-00047.20110901AmendWand

[Inside Back Booklet]

(Optional section)  
Product Facts:  
Container treats more than [ ] weeds [when calculating number of weeds, 24 fl oz treats 200 weeds]

**WHAT IT DOES**

[Optional weed illustrations]

Kills and prevents all types of weeds and grasses

**HOW IT WORKS**

**IMPORTANT: To prevent new weeds and grasses from growing YOU MUST SPRAY THE ENTIRE AREA you want to control (keep free of weeds), NOT JUST the emerged (existing) weeds.**

[Insert brand name] This product Works 2 (Two) ways:

1. Glyphosate, the primary active ingredient in (this product) [Insert Brand Name] is absorbed by the (weed) leaves. It moves through the weed to the root, stopping the function of an essential enzyme found in plants (but not humans or animals). Weeds die, roots and all - so weeds (they) don't grow back. Kills only what you spray. Any product not absorbed by the plant breaks down without moving in or on the soil to untreated plants. Weeds begin to yellow and wilt within hours (# hours) with complete kill in 1 to 2 weeks.
2. The other ingredient (Contains a second active ingredient that) provides (creates) an invisible barrier in the soil that prevents growth of (new) (sprouting) weed(s) (seeds) (and grasses) (from sprouting, appearing, growing) for up to 4 months.

[Optional graphics]

**WHERE (HOW) TO USE**

Apply (spray) this product [Insert brand name] (to) BOTH existing weeds and (weed-prone) areas where weeds have not yet appeared. (Keeps treated (insert color) areas weed free for up to 4 months.)

- On cracks and crevices in driveways, sidewalks walkways, patios, and tennis courts
- Along fences, foundations, curbs, retaining walls, and edge of lawns
- Around the base or in mulched beds of **well-established** (at least 6 months old) (ornamental) plants, shrubs or trees
- On gravel areas (gravel pathways)
- On walkways, driveways, (RV and boat) parking areas, and brick patios
- Decorative rock (mulch) or bark landscapes

**WHERE NOT TO USE**

- DO NOT SPRAY desirable plants or grasses, - they will die.
- DO NOT USE in lawns or for lawn renovation as this product [Insert brand name] prevents desirable grasses from growing too.
- DO NOT USE for vegetable garden preparation or in and around fruits and vegetables.

071995-00047.20110901AmendWand

- DO NOT SPRAY around young plants or in an area that will be planted or seeded within 4 months.

**Note:** For weed control in these areas use Roundup Weed & Grass Killer Ready-To-Use Plus or Roundup Weed & Grass Killer Super Concentrate.

**[Re-entry Icon]**

People and pets may enter treated area after spray has dried.

**DIRECTIONS FOR USE**

It is a violation of Federal law to use this product in a manner inconsistent with its labeling.

**HOW TO ASSEMBLE AND USE**

*[INSERT SPRAYER SPECIFIC ASSEMBLY/USE INSTRUCTIONS FROM APPENDIX 3]*

**HOW TO APPLY**

*[Optional text for Pull 'N Spray, Battery Operated Sprayer, and Pump N Go and EZ Sprayer Devices]*

- Follow illustrations and instructions *[Insert location of instructions /illustrations]* in the How to Assemble and Use section to ready (prime) the sprayer.

**[Non-foaming Sprayers]**

- (Open) Adjust (twist) nozzle (at end of sprayer) to (a) coarse spray (desired spray pattern).

**[For trigger sprayers only]**

- Adjust nozzle to the desired spray setting (foam or spray) *[Alternate Text]* Adjust nozzle to coarse spray.
- *[Optional for PNG, PNS and Battery Wand - Point sprayer at unwanted weeds, grasses and weed-prone areas where weeds typically emerge and press sprayer trigger, hold for continuous spray.]*
- Spray the existing weeds AND the entire surrounding weed-prone area you want to keep free of weeds (weed free) for up to 4 months. Spray the area until **THOROUGHLY WET** (or covered with foam).
- When spraying around the base of **well-established** (at least 6 months old) ornamental plants, shrubs or trees, shield desirable plants from drift with a sheet of cardboard or plastic. If a desirable plant is accidentally sprayed, rinse off immediately with water.

*[Optional text]* When making applications around desirable trees or ornamental plants, wait until desirable plants have become well established (at least 6 months old) and deeply rooted.

**[Refill Container only]**

- Use this product to refill the empty Roundup Weed & Grass Killer Ready-To-Use Plus (Pump 'N Go Sprayer) container by pouring product carefully and directly into the container. DO NOT add water.

071995-00047.20110901AmendWand

**WHEN TO APPLY**

*[Insert optional tree icon]*

- Spray (apply) when air is calm to prevent drift to desirable plants.
- For (fastest visual) (best) results, apply during warm, sunny weather (above 60 °F) (to accelerate systemic movement from foliage to root). *[Optional text]* However, effective results can be obtained when applications are made under cool and cloudy conditions as low as 50° F.]
- (RAINPROOF (PROTECTION): Rain or watering 10minutes after application will NOT wash away effectiveness.
- *[Optional text]* Wait (at least) (1, 2, 3) months before spraying a previously treated area unless new weeds appear, then respray (treated area) as needed.]
- 

**WHEN TO REPLANT**

All ornamental bedding plants (annuals and perennials), trees, shrubs, sod and seed (flowers and grasses) may be planted 4 months after application.

**(HOW TO) REFILL**

*[Alternate Text Ready To Use Refill For All Sizes]*

To refill this empty container, pour product carefully and directly from the [insert brand name for ready-to-use product on EPA Reg. No. 71995-47] container designated as the ready-to-use refill container. DO NOT add water.

*[24 fl oz]*

To empty container add 1 oz (2 Tbs) of *[Insert brand name for Reg. No. 71995-40]* then fill with water very slowly to avoid foaming.

*[30 fl oz]*

To empty container add 1.5 oz (3 Tbs) of *[Insert brand name for Reg. No. 71995-40]* then fill with water very slowly to avoid foaming.

*[½ Gallon]*

To empty container add 3 fl oz (6 Tbs) of *[Insert brand name for Reg. No. 71995-40]* then fill with water very slowly to avoid foaming.

*[Gallon]*

To empty container add 6 oz of *[Insert brand name for Reg. No. 71995-40]* then fill with water very slowly to avoid foaming.

*[1.1 Gallon]*

To empty container add 7 oz of *[Insert brand name for Reg. No. 71995-40]* then fill with water very slowly to avoid foaming.

071995-00047.20110901AmendWand

**[1.25 Gallon]**

Use this product to refill the empty Roundup Ready-To-Use Extended Control ® Weed & Grass Killer Plus Weed Preventer II (Pump 'N Go Sprayer) (or insert brand name for 71995-47) container by pouring product carefully and directly into the container. DO NOT add water.

**[1.33 Gallon]**

To empty container add 8 fl oz of [Insert brand name for Reg. No. 71995-40] then fill with water very slowly to avoid foaming.

**[1.5 Gallon]**

To empty container add 10 fl oz of [Insert brand name for Reg. No. 71995-40] then fill with water very slowly to avoid foaming.

**HOW TO CLEAN** [Optional Section - Battery Operated Sprayer ONLY]

- Battery operated sprayer head may be used with other Roundup brand products, it will replace any sprayer fitted with a quick-connect cap
- Before using the [Insert name of sprayer device] sprayer with other Roundup brand products, the sprayer must be thoroughly cleaned (the sprayer must be purged of remaining product).
- Disconnect sprayer unit from the quick-connect cap (Disconnect sprayer unit from the bottle cap)
- Place ONLY the end of the hose (the hose end) into a bucket of water and spray continuously for 30 seconds onto bare soil or gravel.

[Alternate Text] Rinse sprayer and sprayer parts (hose) with water 3 times. Spray rinse water on bare soil or gravel. Discard empty sprayer bottle as instructed in DISPOSAL section.

[Alternate Text] Rinse sprayer with water 3 times and then spray (clean) water through sprayer for 30 seconds. All rinse water should be applied to bare soil or gravel.

- Connect sprayer head to any Roundup brand product with a quick-connect cap (adaptor) (any Roundup brand product bottle compatible with the battery sprayer). [Insert brand name of sprayer]
- Failure to properly clean sprayer before using with other Roundup brand products may cause damage to your plants.

**KILLS ALL TYPES OF WEEDS & GRASSES** [Optional Section]

Bahiagrass  
 Bindweed  
 Bluegrass  
 Bromegrass  
 Chickweed  
 Crabgrass  
 Creeping Beggarweed  
 Diffuse Lovegrass  
 False Dandelion  
 Fiddleneck  
 Garden Spurge  
 Knotweed  
 London Rocket  
 Mayweed

Bentgrass  
 Black Medic  
 Brassbuttons  
 Bur Clover  
 Common Plantain  
 Creeping Bentgrass  
 Curly Dock  
 Dog Fennel  
 Fennel  
 Filaree  
 Henbit  
 Lambsquarters  
 Maiden Cane  
 Mouseear Chickweed

Bermudagrass  
 Blue Toadflax  
 Broadleaf Plantain  
 Canada Thistle  
 Common Groundsel  
 Creeping Charlie  
 Dandelion  
 Evening Primrose  
 Fescue  
 Florida Pusley  
 Johnsongrass  
 Little Bitter Cress  
 Mallow  
 Nimblewill



071995-00047.20110901AmendWand

Oldenlandia  
Pennsylvania Smartweed  
Primrose  
Quackgrass  
Shepherdspurse  
Spotted Spurge  
Tansy Ragwort  
Whitetop  
Yellow Nutgrass

Orchardgrass  
Pennywort  
Prostrate Spurge  
Ragweed  
Smooth Cat's Ear  
St. Augustinegrass  
Torpedograss  
Wild Morning Glory  
Zoysia

Oxalis  
Perennial Ryegrass  
Puncture Vine  
Sandspur  
Sowthistle  
Tall Fescue  
White Clover  
Wild Barley

*[Optional Text]* **NOTE:** Heavy lawn grass or well established difficult to control weeds, such as Bermudagrass, Nimblewill, Dandelion, or Canada Thistle may require a repeat application.

**STORAGE AND DISPOSAL** *[trash can illustration]*

071995-00047.20110901AmendWand

*[Non-sprayer packages]*

Store product in original container in a safe place away from direct sunlight. Keep from freezing.

*[Trigger Sprayer]*

**PESTICIDE STORAGE:** Rotate nozzle to closed position. (Turn nozzle to OFF position) (close nozzle on trigger sprayer). Store product in original container in a safe place away from direct sunlight. Keep from freezing.

*[Quick Connect Sprayer]*

**PESTICIDE STORAGE:** Flip down (insert color of spout) spout to close. NO NEED TO DISCONNECT TRIGGER SPRAYER. Close nozzle on trigger sprayer (Turn nozzle on trigger sprayer to OFF position) (Rotate nozzle to closed position). Snap sprayer back in place. Store product in original container in a safe place away from direct sunlight. Keep from freezing.

*[Pull 'N Spray]*

**PESTICIDE STORAGE :**

Completely dispense product in sprayer prior to storage. Rotate (twist) sprayer nozzle to the (CLOSED or OFF) position. Flip down (color of spout) spout on cap. NO NEED TO DISCONNECT SPRAYER HOSE FROM CAP. Place sprayer back inside carrier on bottle with the nozzle facing down. Store product in original container in a safe place away from direct sunlight. Keep from freezing.

*[Battery Operated Sprayer]*

**PESTICIDE STORAGE :**

Flip down [color of spout] spout on cap. NO NEED TO DISCONNECT SPRAYER HOSE FROM CAP. Twist sprayer nozzle to the OFF position. [Engage trigger lock.] Flip the [applicator name] wand closed and place [sprayer back] in side carrier [clip] [holder]. Store in its original container, in a safe place away from direct sunlight. Keep from freezing.

*[Pump N Go(II) Sprayer]*

**PESTICIDE STORAGE :**

Push the yellow button and retract the wand until the yellow button snaps back into the original storage position. Place wand back onto the top of the bottle in the integrated holster with nozzle tip extended through the eyelet opening. Push pump handle all the way down and turn pump handle and cap counter-clockwise to relieve pressure, then retighten to store. Store product in original container in a safe place away from direct sunlight. Keep from freezing.

*[All packaging types]*

071995-00047.20110901AmendWand

**PESTICIDE DISPOSAL:** Do not reuse or refill this container unless the directions for use allow a different concentrated or ready-to-use product to be diluted in or poured directly into the container. Reuse or refill this container according to the directions contained in the **REFILL** section.

[*Alternate language*] Do not reuse or refill this container unless the directions for use allow refilling according to the directions contained in the (see the) (HOW TO) **REFILL** (instructions) section (for details).

[*Alternate language for non-sprayer container*] Nonrefillable container. Do not reuse or refill this container.

**If Empty:** Place in trash or offer for recycling if available. **If Partly Filled:** Call your local solid waste agency [*or insert toll free number*] for disposal instructions. Never place unused product down any indoor or outdoor drain.

**PRECAUTIONARY STATEMENTS** [*optional illustration*]

**HAZARDS TO HUMANS & DOMESTIC ANIMALS**

**CAUTION:** Causes moderate eye irritation. Avoid contact with eyes or clothing. Wash thoroughly with soap and water after handling.

**FIRST AID**

**IF IN EYES**

- Hold eye open and rinse slowly and gently with water for 15-20 minutes.
- Remove contact lenses, if present, after first 5 minutes, then continue rinsing eyes.
- Call a poison control center (insert contact telephone #) or doctor for treatment advice.

**EMERGENCY MEDICAL INFORMATION**

- Have the product container or label with you when calling a poison control center or doctor, or going for treatment.
- You may contact (insert contact telephone #) for emergency medical treatment information.
- This product is identified as [*Insert brand name*], EPA Reg. No. 71995-47

**ENVIRONMENTAL HAZARDS**

To protect the environment, do not allow pesticide to enter or run off into storm drains, drainage ditches, gutters or surface waters. Applying this product in calm weather when rain is not predicted for the next 24 hours will help to ensure that wind or rain does not blow or wash pesticide off the treatment area.

**NOTICE:** To the extent consistent with applicable law, buyer assumes all responsibility for safety and use not in accordance with directions.

071995-00047.20110901AmendWand

[Optional text] Roundup Family of Products: Visit the Roundup website to learn more about the Roundup family of products for the best solution to your toughest weed problems [Insert optional graphics of products]

[Optional text]

Roundup Lawn & Garden products have the best solutions to your toughest weed problems. Visit the Roundup website, [www.roundup.com](http://www.roundup.com), to learn more about the Roundup family of products

- Roundup Extended Control Weed & Grass Killer products - kill & prevent for up to 4 months
- Roundup Weed & Grass Killer Ready-To-Use Plus - no mixing, no mess
- Roundup Poison Ivy Plus Tough Brush Killer products - kill hard-to-control weeds  
Roundup Wild Blackberry Plus Vine & Brush Killer products – kill tough brush & vines
- Roundup Weed & Grass Killer Concentrate Plus - fast visible results
- Roundup Weed & Grass Killer Super Concentrate - best Roundup concentrate value
- Roundup Weed & Grass Killer Sure Shot Foam – target weeds in tight spaces

This product is protected by U.S. patent no. [Insert relevant patent number(s)]. Other patents pending. No license granted under any non-U.S. patent(s).

[Insert relevant trademark statements]

© [ ] MONSANTO COMPANY

Produced (Manufactured) for  
Monsanto Company

Lawn & Garden Products

PO Box 418

Marysville, OH 43041-0418

PPN (Form No.) \_\_\_\_\_

EPA Reg. No. 71995-47

EPA Est. 239-IA-3<sup>1</sup>; 58996-MO-1<sup>A</sup> 239-MS-001<sup>M</sup> (insert additional establishments as needed)

Superscript is first letter of lot number

Made in USA

071995-00047.20110901AmendWand

[Base Label]

[Generic Logo]

[Insert Brand Name in English & Spanish]

<b>PRECAUTIONARY STATEMENTS</b> <i>[optional illustration]</i>	
<b>HAZARDS TO HUMANS &amp; DOMESTIC ANIMALS</b> <b>CAUTION:</b> Causes moderate eye irritation. Avoid contact with eyes or clothing. Wash thoroughly with soap and water after handling.	
<b>FIRST AID</b>	
<b>IF IN EYES</b>	<ul style="list-style-type: none"> <li>• Hold eye open and rinse slowly and gently with water for 15-20 minutes.</li> <li>• Remove contact lenses, if present, after first 5 minutes, then continue rinsing eyes.</li> <li>• Call a poison control center (insert contact telephone #) or doctor for treatment advice.</li> </ul>
<b>EMERGENCY MEDICAL INFORMATION</b>	
<ul style="list-style-type: none"> <li>• Have the product container or label with you when calling a poison control center or doctor, or going for treatment.</li> <li>• You may contact (insert contact telephone #) for emergency medical treatment information.</li> <li>• This product is identified as <b><i>[Insert brand name]</i></b>, EPA Reg. No. <b>71995-47</b></li> </ul>	

[Insert container specific storage and disposal]

Manufactured (Produced) For  
Monsanto Company  
Lawn & Garden Products  
P.O. Box 418  
Marysville, OH 43041

EPA Reg. No. 71995-47  
PPN (LB code)  
EPA Est. 239-IA-3<sup>1</sup>; 58996-MO-1<sup>A</sup>; 239-MS-001<sup>M</sup> (insert additional establishments as needed)  
Superscript is first letter of lot number  
Made in USA  
[Lot number will be ink jet onto bottle]

071995-00047.20110901AmendWand

**APPENDIX 1 – Consolidated List of Label Claims**

- Before [weed graphics] / After [weed graphics]
- Begins working in hours
- Consumer guarantee: If for any reason you are not satisfied after using this product, simply send us original proof of purchase and we will replace the product or refund the purchase price.
- Contains FastAct™ (Technology)
- Contains Pelargonic (acid)
- Controls tough weeds longer
- Dead in a day
- Dead Weeds Guaranteed [must qualify claim]
- Delivers maximum performance: Kills tough weeds and grasses to the root, prevents new weeds and grasses for up to 4 months, visible results in hours (6 hours), rainproof protection in (10) minutes, great value – covers up to [ ] sq ft.
- Do NOT add water
- Dual (2-way) Action (kills and prevents) Formula Works Two (2) Ways
- Dual (2-way) Action: Kills existing weeds (roots and all) and prevents new weeds from appearing for up to 4 months
- Easy to use (convenient, handy, useful)
- Eliminate(s) weeds
- Even if it rains –this product [Insert Brand Name] won't lose its effectiveness
- Exclusive (Roundup brand) formula
- Extended performance
- Extended weed control
- Fast acting (formula)
- Fast results
- FastAct™ (Technology)
- Fast-acting formula moves to the root faster (is absorbed fast)(more quickly)
- Glyphosate targets an enzyme found in plants, but not in people or pets
- Great value – covers up to [ ] sq ft
- Guaranteed Satisfaction. (Open booklet for details).
- Ideal for killing and preventing unwanted weeds and grasses throughout your yard. Use along fences, retaining walls; in cracks of walks, drives and patios; and around flower (landscape) beds, rings around trees and shrubs
- Keeps driveways, walkways, landscape borders, tree rings, and other areas weed-free for up to 4 months
- (One application) Kills (existing) weeds (& grasses) (roots & all) and prevents (new) weed(s) (seeds) (from sprouting, appearing, growing) for up to 4 months
- Kills (the toughest weeds and grasses) to the root so weeds (they) don't come back
- Kills (to) the roots
- Kills and prevents for up to 4 months
- Kills more weeds in more places.
- Kills over 100 weeds

071995-00047.20110901AmendWand

- Kills the weeds (& grasses) you see (roots & all) and prevents (new) weed(s) (seeds) (from sprouting, appearing) for up to 4 months
- Kills tough weeds & grasses to the root
- Kills weeds dead
- Kills weeds, roots and all
- Long lasting formula
- Next day results: Begins killing on contact, visible results in 6 hours No Hand Fatigue
- No Mix(ing), No Mess
- No Root, No Weed, No Problem
- NOW
- One application kills weeds (to the root) and prevents (new) weeds for up to 4 months
- One (1) application lasts up to 4 months
- One (1) application kills and prevents weeds (and grasses) for months
- One (1) (1-step) step protection
- 
- Patented FastAct (II) Technology
- Pelargonic (acid) makes the difference! (Only Roundup brands have it)
- Plant 4 months after application
- Pour refill (directly) into Pump 'N Go container (sprayer)
- Powered by Pelargonic (Acid)
- Provides extended control of weeds in driveways, walkways, landscape borders, tree rings, and other areas.
- Pump 'N Go Refill
- Quality that lasts
- Rainproof (Protection) in minutes; rainproof in 10 minutes ; for control that won't wash away
- Ready-To-Use
- See results in 6 hours (even when it's cool) (even in the Spring)
- Results that show
- Same day results
- Satisfaction guaranteed
- Seasonal weed control
- (See) (visual) results in hours
- Prevents for up to 4 months
- 2 in 1 (kills and prevents)
- Speedy results
- Spray today, dead tomorrow
- Starts to kill in hours (same day)
- Starts to kill overnight
- Starts working in \_\_\_\_\_ hours
- Starts working overnight
- Stops (prevents) (kills) weeds (and grasses) all season long
- The fast weed killer (starts working immediately)
- The Fast and (&) Easy Way to Kill and (&) Prevent Weeds for Up to 4 Months
- Glyphosate formula targets an enzyme found in plants but not in people or pets

071995-00047.20110901AmendWand

- Tougher than the toughest weeds
- Trusted protection
- Trusted results for guaranteed satisfaction (Open booklet for details\*) [qualify guarantee]
- Use to trim and edge landscape areas
- Visible Results in hours (6 hours)
- Weeds start dying in 1 day

*[Promotional options]*

- Save up to \$[x] on (your) next purchase
- Free [insert offering] inside
- Free [insert offering] with this purchase of [Insert brand name] (container size)
- FREE SAMPLE
- SAMPLE NOT FOR SALE
- Value sized – [ ]% more (free)
- Refill Size
- Refill
- FREE [Insert Brand Name] a (insert dollar amount) VALUE
- Can be used to refill the Pump 'N Go Sprayer
- Bonus size
- Great Value
- \$[X] Rebate



**APPENDIX 2 – Packaging Related Claims**

NET

**Quick-Connect Sprayer (QCS)**

- Now
- Quick connect sprayer
- Quick &(and) easy to use
- No leaks or mess
- Easy to store (see back for instructions)

**Foaming Sprayer (Quick-connect or trigger type)**

- Visible foam
- Foam
- Foam targets exactly (precisely) what (the weeds) you want to spray (kill)
- See (shows) where (the weeds) (what) (how much) you (you've) spray (sprayed) (applied)
- See (shows) (marks) area covered (treated) (sprayed).
- (Foam) Marks (shows) treated (sprayed) weeds
- (Foam) Marks (shows) the weeds you've sprayed (treated)
- Visible foam marks weeds
- Visible foam marks (shows) weeds you've sprayed (treated)
- Easily (Easy to) see where (the weeds) (what) you've sprayed (treated) (applied)
- Visible foam makes it easy (easier) to see where (the weeds) (what) you've sprayed (treated) (applied)
- Foam makes it easy (easier) to see where (the weeds) (what) you've sprayed (treated) (applied)
- Choose foam or clear stream (no foam)
- See where you spray technology
- Marker (Foam) (Foaming) Technology
- Foam marks the spot
- Foaming action
- For Visible Results
- See what you've hit
- The accurate way to spray
- Hit what you aim at

**Pull 'N Spray**

- Quick & Easy to Use
- EASY-TO-USE
- The easy way to spray
- No (More) Hand Fatigue
- No more squeeze, squeeze, squeeze

071995-00047.20110901AmendWand

- No (constant) pumping
- No constant trigger squeezing
- No more pumping
- No pumping just pull and spray
- (X%) More than 1 gallon size
- Consistent spray for maximum accuracy
- Continuous, adjustable spray
- Quickly covers large areas
- No more tired (aching) hands
- Fast and (&) easy application
- Easy to use tank sprayer
- Change the way you spray
- Great for large or small jobs (areas)
- Adjustable spray (sprayer) nozzle for maximum control
- Adjustable spray pattern for maximum control
- You're always ready to spray
- It's always ready to spray
- The easier way to kill (and prevent) weeds
- Save (Saves) time and energy
- One (1) pull = (equals) [ ] trigger sprays
- One (1) pull delivers [ ] trigger sprays
- 1 Pull = (insert #) Trigger Sprays
- Pull 'N Spray
- Give your hands a break
- Continuous spray
- Accurate
- Targets weeds
- Convenient

<b>Pump N Go Sprayer</b>
--------------------------

- (X%) More than 1 gallon size
- X% more
- Accurate
- Adjustable spray (sprayer) nozzle for maximum control
- Adjustable spray pattern for maximum control
- Change the way you spray
- Consistent spray for maximum accuracy
- Continuous spray
- Continuous, adjustable spray
- Convenient (extendable wand)
- Easy to use tank sprayer
- EASY-TO-USE
- Extendable wand provides greater accuracy without bending over
- Fast and (&) easy application

071995-00047.20110901AmendWand

- Give your hands a break
- Great for large or small jobs (areas)
- Ideal for large or small jobs (areas)
- Improved Applicator (Application) Device!
- Improved Applicator (Application) System!
- Improved Applicator (Application)!
- Improved!
- It's always ready to spray
- Long(-er) spray time with less pumping
- New and Improved!
- New!
- No (constant) pumping
- No (More) Hand Fatigue
- No (more) pumping, no (more) pulling, just spray
- No constant trigger squeezing (pulling)
- No more squeeze, squeeze, squeeze
- No more tired (aching) hands
- Now!
- Quick & Easy to Use
- Quickly covers large areas
- Revolutionary (new) applicator
- Refillable
- Save (Saves) time and energy
- Targeted spray
- Targets weeds
- The easier way to kill (and prevent) weeds
- The easier way to spray
- The easy way to spray
- The fast and easy way to kill (and prevent) weeds
- (Provides) Up to [ ] minutes of continuous spray
- You're always ready to spray
- 

<b>Battery Operated Trigger Sprayer</b>
---

- X % more
- Quick & Easy to Use
- EASY-TO-USE
- The easy way to spray
- The easier way to spray
- No (More) Hand Fatigue
- No more squeeze, squeeze, squeeze
- No (constant) pumping
- No constant trigger squeezing (pulling)
- No (more) pumping, no (more) pulling, just spray !

071995-00047.20110901AmendWand

- (X %) More than 1 gallon size
- Power sprayer for large areas
- Consistent spray for maximum accuracy
- Continuous, adjustable spray
- Quickly covers large areas
- No more tired (aching) hands
- No more trigger sprayer
- Fast and (&) easy application
- Easy to use tank sprayer
- Revolutionary (new) applicator
- Change the way you spray
- Ideal for large or small jobs (areas)
- Great for large or small jobs (areas)
- Adjustable spray (sprayer) nozzle for maximum control
- Adjustable spray pattern for maximum control
- You're always ready to spray
- It's always ready to spray
- The easier way to kill (and prevent) weeds
- Targets weeds in tight places
- The fast way to spray
- The powerful way to spray
- Save (Saves) time and energy
- New!
- Now!
- Improved Applicator (Application)!
- Improved Applicator (Application) System!
- Improved Applicator (Application) Device!
- New and Improved!
- Improved!
- Give your hands a break
- Continuous spray
- Targeted spray
- Accurate
- Targets weeds
- Convenient
- (New) Continuous Spray Wand
- Control Wand (with extended reach)
- Control Wand (with continuous spray)
- (New) Extended Reach Wand
- Extendable spray wand – less bending
- Extendable (insert device name) spray wand
-

071995-00047.20110901AmendWand

**APPENDIX 3 – Packaging Related Instructions**

**QUICK CONNECT SPRAYER [illustrations]**

1. Remove sprayer. Pull cord/tubing ALL THE WAY OUT.
2. Insert (color of plug) plug into spout on cap until it clicks.
3. Flip up spout. Open nozzle at end of sprayer. (Select desired nozzle position, Foam (Marker) or Stream (Spray)(No Marker)(No Foam))

[PULL ' N SPRAY illustrations  
[Applicator Device Directions]

**Illustration # 1**

- Remove sprayer from side carrier and unwrap hose completely.
- Insert (color of plug) plug at end of hose into (color of spout) spout on cap until it clicks.
- Flip up spout.

**Illustration #2**

- Point sprayer away from body.
- Grasp sprayer by the handle.
- Slowly pull ring at bottom of sprayer handle out until it stops (and hold for 2 seconds) to prime (ready) the sprayer.

**Illustration #3**

- Twist nozzle at end of sprayer to adjust spray setting.
- Press and hold trigger button on sprayer to begin spraying (and hold down for continuous spray).
- Pull ring at sprayer bottom again as needed to prime sprayer and continue spraying.

[Optional Instructions on PNS handle] PULL OUT SLOWLY (AND HOLD FOR (X) SECOND(S)).

**PUMP N' GO (EZ) SPRAYER [illustrations]**

**CUT [Illustration # 1]**

1. Carefully cut the two white zip ties securing the hose and pump handle with scissors. Use caution not to cut the white hose.

**CONNECT [Illustration # 2]**

2. Unwind hose. Firmly push the connector at the end of the hose onto the spout on the pump, until it locks into place. The white dust cap on spout must first be removed before connecting

**EXTEND WAND [Illustration # 3]**

3. Lift sprayer wand off bottle. Push yellow button while pulling out on the wand nozzle tip. Fully extend wand until yellow button snaps into SPRAY position. (NOTE: White trigger will not function until wand is fully extended and yellow button is visible in the spray

071995-00047.20110901AmendWand

position.

**PUMP** [Illustration # 4]

- 4. Make sure handle is screwed on TIGHTLY or the bottle will not pressurize. Pump container 15-20 times to pressurize bottle. A full bottle requires fewer pumps than an empty bottle. Pumping the higher range will provide longer spray duration. After pumping, push pump down and turn handle clockwise to lock into carrying position. (NOTE: This bottle is designed to expand under pressure and cannot be over-pressurized.)

**SPRAY** [Illustration # 5]

- 5. Aim wand. Spray by pushing down white trigger with thumb. Adjust spray pattern by rotating white nozzle tip up to one half rotation. Spray weeds (and grasses) until thoroughly wet

**STORE** [Illustration # 6]

- 6. When finished spraying, push (press) the yellow button and (retract) push (the) wand back to the original storage position until the yellow button snaps into place. Place wand back onto the top of the bottle i.

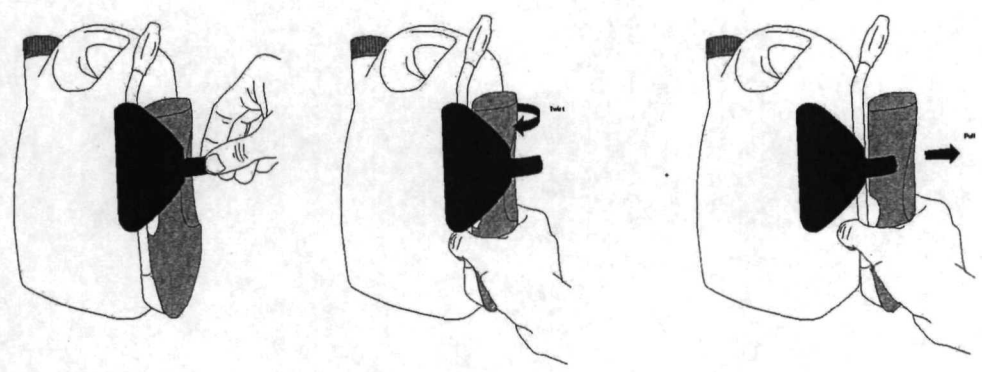
**DEPRESSURIZE** [illustration #7]

- 7. Push pump handle all the way down and turn pump handle and cap counter-clockwise to relieve pressure, then retighten prior to storing.

**BATTERY OPERATED SPRAYER DEVICE** [illustrations]

**1. Remove**

- Open security lock from wand holder by pulling tab from locking knobs
- Remove wand [applicator name] from side (carrier) (holder) (clip).



[Illustration #1] Unsnap holder

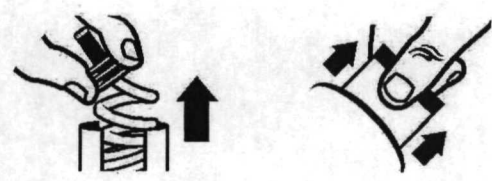
Twist left

Pull

Pull connector by slightly twisting from holder and unwrap hose completely.

- Remove protective strip from battery compartment to activate batteries.

071995-00047.20110901AmendWand



[Illustration #2]

**2. Connect**

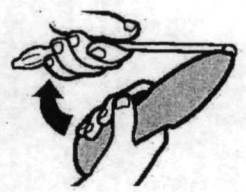
- Insert [color of plug] plug at end of hose into [color of spout] spout on cap until it clicks. Flip up spout. Spout must remain up while spraying.



[Illustration #3]

**3. Extend**

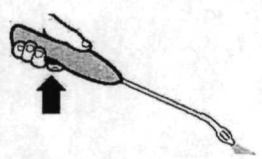
- Flip open wand [applicator name] until it clicks and locks into position.



[Illustration #4]

**4. Spray**

- Twist nozzle at end of nozzle [applicator name] to desired spray pattern. Ensure trigger lock is disengaged (open) (by sliding the switch back) before spraying. Hold [color of trigger] trigger for continuous spray.



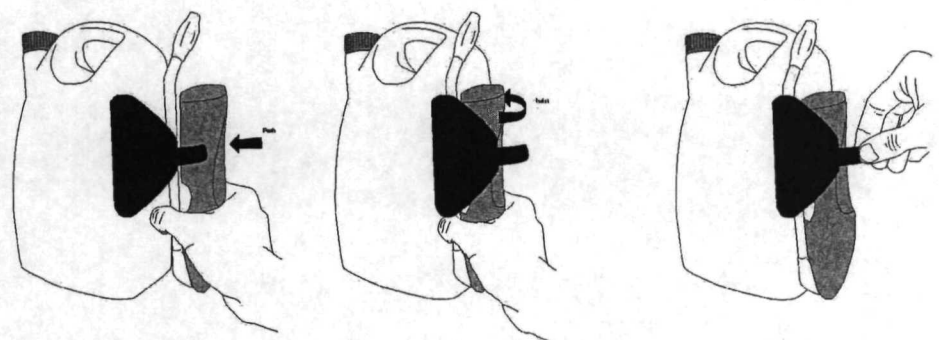
[Illustration #5]

**HOW TO APPLY/USE:** [icon]

Follow illustrations and instructions above. Twist nozzle at end of wand [applicator name] to desired spray pattern. Point [applicator name] nozzle away from body and hold [color of trigger] trigger for continuous spray. Release trigger to stop spray.

071995-00047.20110901AmendWand

After Use: Twist nozzle to OFF position. Completely empty sprayer before storing. Engage trigger lock by sliding the switch forward. Flip the wand to [applicator name] closed and store on the side (holder) (clip) (carrier) with the wand up by slightly twisting back into position.



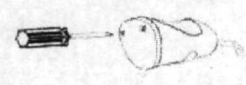
Push

Twist

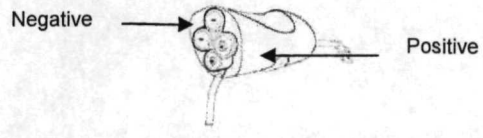
Lock

**Important Use Information:** Do not submerge in water. When storing sprayer for long periods, remove batteries.

**To replace batteries:** Open battery compartment at bottom of wand (insert device name) with a small screwdriver [illustration].



Remove used batteries and replace with four new AA alkaline batteries in correct position as marked inside battery compartment or per illustration.



Securely close battery compartment door and screw closed firmly. Always use a complete set of the same type when replacing batteries. Best performance is achieved with alkaline batteries. Never mix alkaline, carbon-zinc or rechargeable batteries. Dispose of used batteries according to manufacturer's instructions or in household trash.

**IMPORTANT SPRAYER INFORMATION** [Optional Section for Battery Operated Device Only]

- Read and follow all directions before use.
- [Insert sprayer brand name] is to be used only (was developed for use) with [Insert brand name of refill pack or bottle] bottles. [Insert sprayer brand name] may not be compatible with other products



071995-00047.20110901AmendWand

- Do not drop or throw sprayer.
- Do not submerge (immerse) sprayer in water. Never place sprayer in dishwasher.
- Do not use soap or other cleaning agents to clean sprayer. If necessary, clean outer sprayer surface only with damp towel.
- Insert batteries in their correct (+/-) position. Remove batteries for winter storage or when storing product for long periods of time.
- Always use a complete set of new alkaline batteries. Never mix alkaline, carbon-zinc, or rechargeable batteries.
- Always follow the manufacturer's recommendations for battery disposal and use.
- Purge [*Insert sprayer brand name*] of liquid for winter storage or place [*Insert sprayer brand name*] in a heated storage area for winter storage.

**TROUBLESHOOTING SECTION FOR BATTERY-OPERATED SPRAYER [OPTIONAL SECTION]**

**-----Optional Troubleshooting Section for [Battery Powered] [Comfort Wand] [Comfort Shot Wand] Battery Powered Comfort Wand [Applicator Name] Directions]-----**

Troubleshooting Tips:

Problem: Sprayer does not spray [function].

Possible Cause: Batteries not installed properly.  
Solution: See instructions for correct battery placement.

Problem: Sprayer makes a straining noise [Sprayer runs but nothing [no product] comes out].

Possible Cause: Nozzle is turned Off.  
Solution: Turn nozzle to [desired] spray setting [position].

Possible Cause: [Color of plug] plug at end of hose is not flipped up.  
Solution: Insert [color of plug] plug at end of hose into [color of spout] spout on cap until it clicks and flip up spout.

Possible Cause: Sprayer is not primed.  
Solution: Press and hold button on sprayer for about X **(10 / 15 / 20 / 30)** seconds to prime the sprayer.

Problem: Spray pattern is weak [or uneven] [product flow is uneven or dribbles out of nozzle].

Possible Cause: Weak batteries.  
Solution: Install a fresh set of alkaline batteries.

Possible Cause: [Color of plug] plug at end of hose is not flipped up.  
Solution: Insert [color of plug] plug at end of hose into [color of spout] spout on cap until it clicks. [Attach coupler to the cap] and flip up spout.

Possible Cause: Nozzle not fully open.  
Solution: Turn nozzle to [desired] spray setting [position].

071995-00047.20110901AmendWand

071995-00047.20110901AmendWand

**Description of Changes for 071995-00047.20110822.AmendWand**

- Changed length of spray for Pump 'N Go(PNG) from 5 minutes to insert # of minutes as a new bottle design is being developed that will provide longer spray time.
- Added 'How to Use' bullets for PNG
- Updated Company name to match updated corporate on file with the Agency
- Updated various container directions for clarification
- Updated Refill section to reflect the appropriate product
- Added 'How to Clean' section for the new Battery Operated Sprayer
- Updated Pesticide Storage to include instructions for battery sprayer and new PNG bottle design
- Updated 'Notice' to meet EPA standards
- Added promotional bullets for Wild Blackberry product and Sure Shot Foam
- Updated Appendix 1 list of marketing claims
- Updated Appendix 2 of Packaging Related Claims
- Updated and added instruction for the Battery Operated Sprayer Device and included illustrations and optional Trouble Shooting Section