

71910-4

9/15/2011

10 of 12



UNITED STATES ENVIRONMENTAL PROTECTION AGENCY
WASHINGTON, D.C. 20460-0001

OFFICE OF CHEMICAL SAFETY
AND POLLUTION PREVENTION

September 15, 2011

Timothy H. Dickens, Ph.D
Agent for The Schawbel Corporation
Scientific Coordination, Inc.
4629 Cherry Valley Drive
Rockville, MD 20853

Subject: Amended Reregistration Label
Product Name: ThermaCELL® Mosquito Repellent Candle Lantern
EPA Registration Number: 71910-4
EPA Decision Number: 425070

Dear Dr Dickens:

The Agency, in accordance with the Federal Insecticide, Fungicide and Rodenticide Act (FIFRA), as amended, has completed reviewing all of the information submitted with your application to support the reregistration of the above referenced product in connection with the **Allethrin** RED and has concluded that your submission is acceptable.

NOTE: This product is **not** being reregistered under sections 3(c)5 and 4(g) of FIFRA at this time.

Please note that the record for this product currently contains the Confidential Statements of Formulation (CSFs) listed below. Any previously dated CSFs are superseded.

- Basic CSF, dated 4/28/2010

A copy of your label stamped "Accepted" is enclosed along with copies of the acute toxicity and product chemistry reviews completed for the subject product. Products shipped after 12 months from the date of this amendment or the next printing of the label whichever occurs first, must bear the new revised label. Your release for shipment of the product bearing the amended label constitutes acceptance of these conditions. If these conditions are not complied with, the registration will be subject to cancellation in accordance with FIFRA sec. 6(e).

If you have any questions about this letter, please contact either Linda Arrington at (703) 305 6249 or via e-mail at Arrington.Linda@epa.gov.

Sincerely yours,



Richard J. Gebken
Product Manager (10)
Insecticide Branch
Registration Division (7505P)

Enclosures: Label stamped "Accepted," dated 9/15/2011
Acute Toxicity Review, dated 5/24/2011
Product Chemistry Review, dated 6/1/2011

30412

ThermaCELL® Mosquito Repellent Candle Lantern

{Select appropriate marketing verbiage from "Marketing Text" section}

Active Ingredient:

d-cis/trans allethrin 21.97%

Other Ingredients 78.03%

Total 100.00%

Keep Out of Reach of Children

CAUTION

See back [side] [bottom] panel for additional precautionary statements.

Product Contains



Contains

{Number} [Reusable] Lantern(s)

{Number} [Reusable] Candle Holder(s)

{Number} [Product Name] Candle(s)

Net Weight 0.53 oz. [each]

{Number} [Product Name] [Insect] Repellent Mat(s)

Net Weight 0.08 oz. [each]

EPA Reg. No. 71910-4

EPA Est. No. 71998-THA-1 [83226-PHL-1]

Manufactured for:

The Schawbel Corporation

26 Crosby Drive

Bedford, MA 01730

Toll Free: 1-8-NO SKEETERS

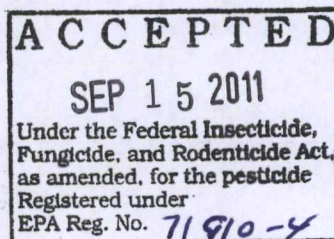
Email: Consumerquestions@thermacell.net

[Made and Printed in Italy]

Mats Made in Italy

Manufactured in Thailand [Philippines]

Protected by one or more of the following U.S. Patents: 5,700,430; D300,606 [; D423,071; 6,033,212 C1]



40412

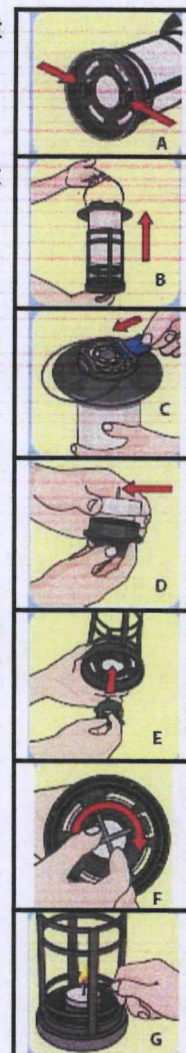
DIRECTIONS FOR USE

It is a violation of Federal law to use this product in a manner inconsistent with its labeling.

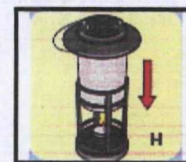
Use Restrictions: Only for outdoor use as an insect repellent. Do not use indoors, in tents or any enclosed area. Cover or remove all exposed food. Before lighting, make sure that candleholder has been secured by turning it clockwise until it clicks, and that lantern globe is securely on lantern base. [Lantern globe will click into place.] Place lantern on a level stable surface or use handle to hang from a non-flammable [metal] garden hook that has been securely inserted into the ground and confirmed to be stable. Do not cover lantern with any material while in use. Do not move lantern when lit. If hanging lantern from a hook, allow unit to cool before removing. To avoid fire hazard, do not place mats, matches or other foreign matter near candle flame. Do not place lantern near underground wires or gas lines. Do not place lantern near combustible material such as dry vegetation, clothing or fuels. Do not leave lantern unattended or use in windy conditions. Never burn candle unattended. Clean with a damp cloth only when the lantern is cool and inactive. Do not use anything other than ThermaCELL® mats and candles in the lantern. Never cut, bend or alter shape of mat. Mats may cause staining; do not let mats contact other surfaces. Failure to follow these instructions could result in personal injury or property damage.

Instructions for Assembling and Using Lantern:

1. Remove lantern from base by squeezing latch tabs on lantern bottom **(A)** and pulling out lantern top **(B)**.
2. Remove bag from inside lantern and take out contents: ThermaCELL® repellent mat, [product name] candle, and candle holder.
3. Take ThermaCELL® repellent mat out of wrapper and insert under grill on lantern top **(C)**.
4. Place [product name] candle into candle holder with wick upright **(D)**.
5. While holding lantern base upright, insert [product name] candle and candle holder up through bottom **(E)** and turn right (clockwise) in direction of arrow **(F)** until candle holder clicks into place. **Make sure candle holder clicks into place.**
6. Set lantern base down on a level surface and light candle **(G)**.
7. Replace lantern on the base **(H)**. **Be sure to push down on lantern until it clicks into base.**



8. When finished using lantern, extinguish candle by blowing into grill top.



To Replace Candle and/or Repellent Mat: Replace candle and repellent mat only when lantern is cool and not in use. Remove candle holder from base of lantern by turning left (counterclockwise). Discard used candle. Insert new candle. Use only ThermaCELL® candles; other candles may not provide correct amount of heat to optimally release repellent, reducing effectiveness. To replace a used repellent mat, push the used repellent mat out by inserting a new mat.

Storage and Disposal

Do not contaminate water, food or feed by storage or disposal.

Pesticide Storage: Store lantern and unused mats in original packaging in a cool, dry place inaccessible to children and pets. **Pesticide Disposal:** Non-refillable container; do not refill or reuse this container. **Used Mats:** Do not reuse empty packaging; place empty packaging and used mats in trash or offer for recycling, if available. **Unused mats:** Call your local solid waste agency for disposal instructions. Never place unused mats down any indoor or outdoor drain. **Candle:** After allowing candle and lantern to cool, remove used up candle and place in trash. Retain candle holder for future lantern use. **For unwanted lantern:** Place in trash or offer for recycling, if available.
Lot Number: [Batch code:] {Description of where lot number can be found}

PRECAUTIONARY STATEMENTS

Hazards to Humans and Domestic Animals

CAUTION: Harmful if swallowed. Harmful if absorbed through skin. Avoid contact with skin, eyes or clothing. Causes moderate eye irritation. Wash thoroughly with soap and water after handling and before eating, drinking, chewing gum, using tobacco or using the toilet. Remove and wash contaminated clothing before reuse.

First Aid

| | |
|--------------------------------|---|
| If Inhaled: | <ul style="list-style-type: none"> Move person to fresh air. If person is not breathing, call 911 or an ambulance, then give artificial respiration, preferably by mouth-to-mouth, if possible. Call a poison control center or doctor for further treatment advice. |
| If Swallowed: | <ul style="list-style-type: none"> Call a poison control center or doctor immediately for treatment advice. Have person sip a glass of water if able to swallow. Do not induce vomiting unless told to do so by a poison control center or doctor. Do not give anything by mouth to an unconscious person. |
| If On Skin or Clothing: | <ul style="list-style-type: none"> Take off contaminated clothing. Rinse skin immediately with plenty of water for 15-20 minutes. Call a poison control center or doctor for further treatment advice. |
| If In Eyes: | <ul style="list-style-type: none"> Hold eye open and rinse slowly and gently with water for 15-20 minutes. Remove contact lenses, if present, after the first 5 minutes, then continue rinsing eye. Call a poison control center or doctor for further treatment advice. |

Have the product container or label with you when calling a poison control center or doctor, or going for treatment. For additional information on this pesticide product (including health concerns, medical emergencies or pesticide incidents), you may call 1-800-xxx-xxxx, Monday through Friday, 8:30 a.m. to 4:30 p.m. EST. After 5 p.m., call your poison control center.

{Note: The first aid statements' grid format will be used if market label space permits; otherwise a paragraph format will be used.}

Physical and Chemical Hazards

Do not touch the grill while the lantern is in use; the grill is hot while in use.

Environmental Hazards

This product is toxic to fish, shrimp and aquatic invertebrates. Do not apply directly to water. Do not contaminate water when cleaning equipment or disposing of equipment wash water or rinsate. Drift may be hazardous to aquatic organisms in water adjacent to treated areas.

Warranty [and Disclaimers]: Seller will not be held responsible for damage, injury or poor performance caused by use of other candles or repellent mats.

[Guarantee: Lantern is guaranteed to last {number} year[s] from date of purchase. If [the] lantern fails to perform to your satisfaction, send the lantern and receipt to {company name} for a full refund of purchase price or repair or replacement.]

ThermaCELL® is a Registered Trademark of the Schawbel Corporation

{Mat Label}

ThermaCELL® Mosquito Repellent Candle Lantern Mat

Active Ingredient:

| | |
|--------------------------------|----------------|
| d-cis/trans allethrin | 21.97% |
| Other Ingredients | 78.03% |
| Total | 100.00% |

Keep Out of Reach of Children

CAUTION

See outer carton for additional precautionary statements and Directions for Use.

Net Weight: 0.08 oz.

EPA Reg. No. 71910-4

EPA Est. No. 43917-ITA-1

Manufactured for:

The Schawbel Corporation

26 Crosby Drive

Bedford, MA 01730

Made [and Printed] in Italy

{Lantern Label}

{Lantern Top}

ATTENTION – HOT SURFACE

Insert mat under grill.

{Lantern Base}

ThermaCELL® Mosquito Repellent Candle Lantern

ATTENTION – HOT SURFACE

Keep Out of Reach of Children

CAUTION

Read **Directions for Use** and **Precautionary Statements** on box prior to use. Only for outdoor use as an insect repellent. Do not use indoors, in a tent or enclosed area. Do not touch the grill while in use; grill is hot while in use. Use only ThermaCELL® Repellent Candle Lantern mats and candles in this lantern. Never leave burning candle unattended. Do not place near combustible materials such as dry vegetation, clothing or fuels. Place on a level, stable surface or hang from a stable garden hook. Do not move lantern after it is lit.

The Schawbel Corporation

26 Crosby Drive

Bedford, MA 01730

EPA Reg. No. 71910-4

EPA Est. No. 71998-THA-1 [83226-PHL-1]

[U.S. Patent Numbers 6,033,212 C1; 5,700,430; D300,606]

[ThermaCELL® is a Registered Trademark of the Schawbel Corporation]

80+12

{Refill Labeling}

**ThermaCELL® Mosquito Repellent Candle Lantern
REFILLS**

{Select appropriate marketing verbiage from "Marketing Text" section}

Active Ingredient:

d-cis/trans allethrin 21.97%

Other Ingredients 78.03%

Total 100.00%

Keep Out of Reach of Children

CAUTION

See back [side] [bottom] panel for additional precautionary statements.

[This Package] Contains

{Number} [Product Name] Candle(s)

Net Weight 0.53 oz. [each]

{Number}[Product Name] [Insect] Repellent Mat(s)

Net Weight 0.08 oz. [each]

EPA Reg. No. 71910-4

EPA Est. No. 71998-THA-1 [83226-PHL-1]

Manufactured for:

The Schawbel Corporation

26 Crosby Drive

Bedford, MA 01730

Toll Free: 1-8-NO SKEETERS

Email: Consumerquestions@thermacell.net

[Made and Printed in Italy]

Mats Made in Italy

Manufactured in Thailand [Philippines]

Protected by one or more of the following U.S. Patents: 5,700,430; D300,606 [; D423,071; 6,033,212 C1]

90f12

DIRECTIONS FOR USE

It is a violation of Federal law to use this product in a manner inconsistent with its labeling.

Use Restrictions: Only for outdoor use as an insect repellent. Do not use indoors, in tents or any enclosed area. Cover or remove all exposed food. Before lighting, make sure that candleholder has been secured by turning it clockwise until it clicks, and that lantern globe is securely on lantern base. [Lantern globe will click into place.] Place lantern on a level stable surface or use handle to hang from a non-flammable [metal] garden hook that has been securely inserted into the ground and confirmed to be stable. Do not cover lantern with any material while in use. Do not move lantern when lit. If hanging lantern from a hook, allow unit to cool before removing. To avoid fire hazard, do not place mats, matches or other foreign matter near candle flame. Do not place lantern near underground wires or gas lines. Do not place lantern near combustible material such as dry vegetation, clothing or fuels. Do not leave lantern unattended or use in windy conditions. Never burn candle unattended. Clean with a damp cloth only when the lantern is cool and inactive. Do not use anything other than ThermaCELL® mats and candles in the lantern. Never cut, bend or alter shape of mat. Mats may cause staining; do not let mats contact other surfaces. Failure to follow these instructions could result in personal injury or property damage.

Instructions for Assembling and Using Lantern:

1. Remove lantern from base by squeezing latch tabs on lantern bottom and pulling out lantern top.
2. Remove ThermaCELL® repellent mat and candle from refill box.
3. Take ThermaCELL® repellent mat out of wrapper and insert under grill on lantern top.
4. Place candle into candle holder with wick upright.
5. While holding lantern base upright, insert candle and candle holder up through bottom and turn right (clockwise) in direction of arrow until candle holder clicks into place. Make sure candle holder clicks into place.
6. Set lantern base down on a level surface and light candle.
7. Replace lantern on the base. Be sure to push down on lantern until it clicks into base.
8. When finished using lantern, extinguish candle by blowing into grill top.

To Replace Candle and/or Repellent Mat: Replace candle and repellent mat only when lantern is cool and not in use. Remove candle holder from base of lantern by turning left (counterclockwise). Discard used candle. Insert new candle. Use only {product name} candles; other candles may not provide correct amount of heat to optimally release repellent, reducing effectiveness. To replace a used repellent mat, push the used repellent mat out by inserting a new mat.

Storage and Disposal

Do not contaminate water, food or feed by storage or disposal.

Pesticide Storage: Store lantern and unused mats in original packaging in a cool, dry place inaccessible to children and pets. **Pesticide Disposal:** Non-refillable container; do not reuse or refill container. **Used Mats:** Do not reuse empty packaging; place empty packaging and used mats in trash or offer for recycling if available. **Unused mats:** Call your local solid waste agency for disposal instructions. Never place unused mats down any indoor or outdoor drain. **Candle:** After allowing candle and lantern to cool, remove used up candle and place in trash. Retain candle holder for future lantern use.

Lot Number: [Batch code:] {Description of where lot number can be found}

PRECAUTIONARY STATEMENTS**Hazards to Humans and Domestic Animals**

CAUTION: Harmful if swallowed. Harmful if absorbed through skin. Avoid contact with skin, eyes or clothing. Causes moderate eye irritation. Wash thoroughly with soap and water after handling and before eating, drinking, chewing gum, using tobacco or using the toilet. Remove and wash contaminated clothing before reuse.

First Aid

| | |
|--------------------------------|---|
| If Inhaled: | <ul style="list-style-type: none"> Move person to fresh air. If person is not breathing, call 911 or an ambulance, then give artificial respiration, preferably by mouth-to-mouth, if possible. Call a poison control center or doctor for further treatment advice. |
| If Swallowed: | <ul style="list-style-type: none"> Call a poison control center or doctor immediately for treatment advice. Have person sip a glass of water if able to swallow. Do not induce vomiting unless told to do so by a poison control center or doctor. Do not give anything by mouth to an unconscious person. |
| If On Skin or Clothing: | <ul style="list-style-type: none"> Take off contaminated clothing. Rinse skin immediately with plenty of water for 15-20 minutes. Call a poison control center or doctor for further treatment advice. |
| If In Eyes: | <ul style="list-style-type: none"> Hold eye open and rinse slowly and gently with water for 15-20 minutes. Remove contact lenses, if present, after the first 5 minutes, then continue rinsing eye. Call a poison control center or doctor for further treatment advice. |

Have the product container or label with you when calling a poison control center or doctor, or going for treatment. For additional information on this pesticide product (including health concerns, medical emergencies or pesticide incidents), you may call 1-800-xxx-xxxx, Monday through Friday, 8:30 a.m. to 4:30 p.m. EST. After 5 p.m., call your poison control center.

{Note: The first aid statements' grid format will be used if market label space permits; otherwise a paragraph format will be used.}

Physical and Chemical Hazards

Do not touch the grill while the lantern is in use; the grill is hot while in use.

Environmental Hazards

This product is toxic to fish, shrimp and aquatic invertebrates. Do not apply directly to water. Do not contaminate water when cleaning equipment or disposing of equipment wash water or rinsate. Drift may be hazardous to aquatic organisms in water adjacent to treated areas.

Warranty [and Disclaimers]: Seller will not be held responsible for damage, injury or poor performance caused by use of other candles or repellent mats.

[Guarantee: Lantern is guaranteed to last {number} year[s] from date of purchase. If [the] lantern fails to perform to your satisfaction, send the lantern and receipt to {company name} for a full refund of purchase price or repair or replacement.]

ThermaCELL® is a Registered Trademark of the Schawbel Corporation

*{Optional Marketing Language, Symbols and Graphics}**{Marketing Text for use on boxes:}*

- REFILLS available
- For use in [product name] lantern
- Also works on [repels] black flies
- Buy one get one free
- Coupon [{ \$ } {number} Rebate[s]] inside. Rebate inside.
- Effective
- Refills [are] available
- Value {or other descriptive term} Pack: {number} dollar savings [off regular price]
- Value {or other descriptive term} Pack: {number} [free] refills [lantern,]

Repellency

{Note: Maximum number of hours claims are calculated based on how many mats are in the package; e.g., 3 mats provide a maximum of 12 hours (3 mats multiplied by 4 hours per mat) repellency}

- [Each] candle lasts a maximum of 4 hours.
- [Each] mat lasts a maximum of 4 hours
- Provides 15' diameter repellency
- [Provides] 15' x 15' [225 sq. ft.] area of repellency
- Provides 15' x 15' ft of protection [from mosquitoes], [an average size deck or patio]
- Provides 225 sq. ft. of repellency for a maximum of 4 hours [per mat]
- Repellent lasts a maximum of 4 hours [per mat]
- Repels mosquitoes, black flies and other flying insects
- Repels mosquitoes and black flies for a maximum of 4 hours [per mat]
- Repels mosquitoes using a heat-activated repellent mat
- Repels mosquitoes, black flies and other [outdoor] flying insects from an area up to 15' by 15' [from an average size deck or patio]
- Repels mosquitoes, black flies and other [outdoor] insects from an average size deck or patio [from an average size deck, patio] for hours

How [it] [ThermaCELL® Mosquito Repellent][s] Work[s]

- Heat-activated [product name] repellent mat repels mosquitoes, black flies and other [outdoor] flying insects
- Heat activated [product name] mat disperses repellent into air
- [product name] mat releases repellent when heated by candle

Where [Product] {[product name]} is used

For backyard[s], yards, decks, patios, parties, gardening, [other] social events [gatherings], spectator sports, sporting events, and outdoor campsites.

Scent

- Place product upwind for maximum repellency

Other

- Refills available wherever Schawbel [ThermaCELL®] repellent products are sold
- The Schawbel Corporation [Schawbel] offers convenient refill kits for use with this product

Handle

- Place lantern on a table or hang from a hook
- Lantern - place on a table or hang from a hook

Mosquitoes, black flies, bugs, and outdoor flying insects can spoil just about any outdoor activity whether you are entertaining guests or working in your backyard. Now you can alleviate the annoyance from these insects for a maximum of four hours; [product name] continuously releases a repellent that repels mosquitoes, black flies, and outdoor flying insects, [for a maximum of {number} hours.]. This product efficiently repels and reduces the annoyance of mosquitoes, black flies, and outdoor flying insects, in an area as large as an average-size deck or patio (15 feet in diameter or 225 square feet [an area 15' by 15'] for a maximum of {number} hours.



[] Denotes alternate/optional language.
{ } Denotes text not printed on market label.