

71910-3

8/1/2012

1/10



UNITED STATES ENVIRONMENTAL PROTECTION AGENCY
WASHINGTON, D.C. 20460-0001

OFFICE OF CHEMICAL SAFETY
AND POLLUTION PREVENTION

August 1, 2012

Mr. Lawrence J. Feller
Senior Consultant/Agent for
The Schawbel Corporation
12 E. Plainfield Avenue
Pen Argyl, PA 18072-1115

**Subject: Amended Labeling; Updates Per RED for Allethrins & PR Notice 2007-4
ThermaCELL® Mosquito Repellent with Earth Scent, EPA Reg. No. 71910-3
Your Submission Dated June 15, 2012**

Dear Mr. Feller:

The labeling referred to above, submitted in connection with registration under the Federal Insecticide, Fungicide and Rodenticide Act, as amended, is acceptable.

A copy of your label stamped "Accepted" is enclosed for your records. If you have any questions regarding this label review, please feel free to contact Mr. Carmen Rodia at (703) 306-0327 or via e-mail at Rodia.Carmen@epa.gov.

Sincerely yours,

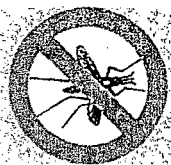
Richard J. Gebken

Richard J. Gebken
Product Manager (10)
Insecticide Branch
Registration Division (7504P)

Enclosure: Label stamped "Accepted"
071910-00002 D466330

2/10

ThermaCELL® Mosquito Repellent with Earth Scent



{Select appropriate marketing verbiage from "Marketing Text" section}

Active Ingredient:		
d-cis/trans allethrin	21.97%	
Other Ingredients	78.03%	
Total	100.00%	

Keep Out of Reach of Children
CAUTION
 See back [side] [bottom] panel for additional precautionary statements.

[This Package] Contains

1 [Reusable] Appliance

{Number} Butane [ThermaCELL®] Cartridge(s)

Net Contents ____ fl. oz. [each]

and

{Number} [Insect] Repellent Mat(s)

Net Weight ____ oz. each

EPA Reg. No. 71910-3

EPA Est. 71998-THA-1

Manufactured for:
 The Schawbel Corporation
 26 Crosby Drive
 Bedford, MA, 01730
 Toll Free: 1-8-NO SKEETERS
 Email: Consumerquestions@thermacell.net

ACCEPTED
August 1, 2012
**Under the Federal Insecticide, Fungicide,
 and Rodenticide Act, as amended, for the
 pesticide registered under:**

EPA. Reg. No: 71910-3

Made and Printed in Italy
 Mats Made in Italy
 Manufactured in Thailand [Philippines]

Protected by one or more of the following U.S. Patents: 5,700,430; D300,606 [; D423,071; 6,033,212 C1]

[] Denotes alternate/optional verbiage { } Denotes verbiage not printed on market labeling

DIRECTIONS FOR USE

It is a violation of Federal law to use this product in a manner inconsistent with its labeling.

{The following directions will be used when mats are sold with or used in the appliance (ThermaCELL® Mosquito Repellent with Earth Scent):}

Allow 10 to 30 minutes, depending upon the size of the area, for product to take effect. This product works well in outdoor areas where there is minimal air movement, such as decks, unenclosed porches, patios and yards. Use one appliance per each 225 square feet (an area 15' x 15') or 15 feet in diameter. **Use Restrictions:** Only for outdoor use as an insect repellent. Do not use indoors, in tents or in any enclosed area. Do not insert anything other than ThermaCELL® mats into the appliance. Cover or remove all exposed food. Do not leave appliance unattended or use in windy conditions. Do not expose appliance or mats to rain. Do not attach appliance to your body or clothing. Place appliance on a flat, stable surface with the grill facing upward. Clean with a damp cloth only when the appliance is cool and inactive. Butane cartridges other than ThermaCELL® cartridges will not work in this appliance.

1. Remove one ThermaCELL® mat from wrapper. One mat lasts a maximum of 4 hours. Mat turns from pale blue to white when active ingredient has been exhausted.

2. Make sure the 'ON/OFF' switch on the appliance is in the 'OFF' position. Insert the mat under the appliance's black grill. To change mats, slide [turn] the 'ON/OFF' switch to 'OFF' and allow the appliance to cool completely. Push the used mat out by inserting a fresh one.

3. Remove the appliance cover and butane cartridge cap.

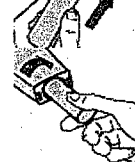
4. Screw the cartridge into the opening of the appliance. Make sure the cartridge is fully inserted by turning it clockwise until it stops. Replace the appliance cover. One ThermaCELL® butane cartridge lasts a maximum of 12 hours {0.73 fl. oz.} [a maximum of 28 hours {1.58 fl. oz.}]. If your appliance fails to heat, it may be out of fuel. Check the fuel level by holding the appliance vertically and looking at the fuel gauge on the bottom. You can see the amount of butane in the cartridge. Replace if empty.

5. Slide [Turn] the 'ON/OFF' switch to the 'ON' position; the butane gas will begin to flow.

6. Wait approximately 5 to 10 seconds then depress the start button three to five times in rapid succession.

7. To verify the appliance is operating, pick it up and check the lens on the end of the appliance. The light at the end of the appliance glows when the appliance is heating. If the light is not glowing, check to make sure the appliance is 'ON' and cartridge is completely screwed into place; then once again depress the start button three to five times in rapid succession. Check to make sure the light is glowing.

8. Place the appliance on a flat, stable area, with the grill side facing up. Do not touch the grill; it will be hot after a couple of minutes. Some visible vapor will appear during use; this is normal. When finished using the appliance, slide [turn] the 'ON/OFF' switch to the 'OFF' position, and allow the appliance to cool completely. Appliance is now ready for storage.



4/10

Storage and Disposal

Do not contaminate water, food or feed by storage or disposal.

Pesticide Storage: Store unused mats in original box in a cool, dry place inaccessible to children and pets. Store appliance and butane cartridges in original box in a cool, dry place away from sources of heat. **Pesticide Disposal and Container Handling:** Non-refillable container; do not refill or reuse this container. **If cartridge is empty or for used mats:** Do not reuse empty packaging, envelopes [wrappers] or cartridges. Do not puncture or incinerate empty cartridges. Place in trash or offer for recycling if available. **If cartridge is partly filled or for unused mats:** Call your local solid waste agency for disposal instructions. Never place unused mats down any indoor or outdoor drain. **For unwanted appliance:** Place in trash or offer for recycling if available.

Batch Code: _____

PRECAUTIONARY STATEMENTS**Hazards to Humans & Domestic Animals**

CAUTION: Harmful if swallowed or absorbed through skin. Causes moderate eye irritation. Avoid contact with skin, eyes or clothing. Wash hands thoroughly with soap and water after handling and before eating, drinking, chewing gum, using tobacco or using the toilet. Remove and wash contaminated clothing before reuse.

First Aid

If Swallowed:	<ul style="list-style-type: none"> Call a poison control center or doctor immediately for treatment advice. Have person sip a glass of water if able to swallow. Do not induce vomiting unless told to do so by a poison control center or doctor. Do not give anything by mouth to an unconscious person.
If On Skin or Clothing:	<ul style="list-style-type: none"> Take off contaminated clothing. Rinse skin immediately with plenty of water for 15-20 minutes. Call a poison control center or doctor for treatment advice.
If In Eyes:	<ul style="list-style-type: none"> Hold eye open and rinse slowly and gently with water for 15-20 minutes. Remove contact lenses, if present, after the first 5 minutes, then continue rinsing eyes. Call a poison control center or doctor for treatment advice.
<p>Have the product container or label with you when calling a poison control center or doctor, or going for treatment. For additional information on this pesticide product (including health concerns, medical emergencies or pesticide incidents), you may call 1-800-xxx-xxxx, Monday through Friday, 8:30 AM to 4:30 PM EST. After 4:30 PM, call your poison control center.</p>	

{Note: The first aid statements' grid format will be used if market label space permits; otherwise a paragraph format will be used.}

Physical and Chemical Hazards

Extremely flammable. Contents under pressure. Keep away from fire, sparks and heated surfaces. Do not puncture or incinerate the butane container. Exposure to temperatures above 130°F may cause bursting.

Environmental Hazards

This product is toxic to fish and aquatic invertebrates. Do not apply directly to water. Do not contaminate water when cleaning equipment or disposing of equipment washwater or rinsate. Drift may be hazardous to aquatic organisms in water adjacent to treated areas.

Guarantee: Appliance is guaranteed to last {number} year[s] from date of purchase. If [the] appliance fails to perform to your satisfaction, send the appliance and receipt to The Schawbel Corporation for a full refund of purchase price or repair or replacement.

Warranty and Disclaimers: Seller will not be held responsible for damage, injury or poor performance caused by use of other butane cartridges or repellent mats. Seller is not responsible for damage caused by using this butane cartridge in other butane products.

ThermaCELL® is a Registered Trademark of the Schawbel Corporation

5/10

*{Mat Label}***ThermaCELL® Mosquito Repellent with Earth Scent Mat****Active Ingredient:**

d-cis/trans allethrin	21.97%
Other Ingredients	78.03%
Total	100.00%

Keep Out of Reach of Children**CAUTION****See outer carton for additional precautionary statements
and Directions for Use.****Net Weight: ____ oz.****EPA Reg. No. 71910-3 EPA Est. 43917-ITA-1****Manufactured for:****The Schawbel Corporation**

26 Crosby Drive Bedford, MA 01730

Made [and Printed] in Italy

*{ThermaCELL® Butane Cartridge Labeling}***ThermaCELL® Butane Cartridge****Keep Out of Reach of Children****CAUTION****Physical and Chemical Hazards**

Extremely flammable. Contents under pressure. Keep away from fire, sparks and heated surfaces. Do not puncture, break or incinerate the butane container, even after use. Exposure to temperatures above 130°F may cause bursting. Protect the butane cartridge from sunlight. Use only with ThermaCELL® products.

See box for additional precautionary statements.**Net Contents: ____ fl. oz.****The Schawbel Corporation**

26 Crosby Drive

Bedford, MA 01730

[ThermaCELL® is a Registered Trademark of the Schawbel Corporation]

*{Appliance Labeling}***{Promotional Item Language (when appliance is used as a promotional item):}**

NWTF Logo National Wild Turkey Federation

Team Realtree Logo [America's Most Versatile Camo Pattern]

Realtree Hardwoods Green HD Logo

ThermaCELL® Mosquito Repellent Appliance**ATTENTION - HOT SURFACE****Keep Out of Reach of Children****CAUTION**Read **Directions for Use** and **Precautionary Statements** on box prior to use.

Only for outdoor use as an insect repellent. Do not use indoors, in a tent or any enclosed area. Do not touch the [black] grill while the appliance is in use. [Black] [G]grill is hot while in use. Place on a flat, stable surface with the [black] grill facing upward. Do not cover with any material while in use. Do not expose appliance to rain. Butane cartridges and mats other than ThermaCELL® will not work in this appliance.

EPA Reg. No. 71910-3 EPA Est. 71998-THA-1, 43917-ITA-1**The Schawbel Corporation**

26 Crosby Drive, Bedford, MA 10730

781-541-6900

U.S. Patent Nos. 5,700,430; D423,071

[ThermaCELL® is a Registered Trademark of the Schawbel Corporation]

6/10

{Refill Labeling}

ThermaCELL® Mosquito Repellent with Earth Scent

REFILLS



{Select appropriate marketing verbiage from "Marketing Text" section}
[Value {or other descriptive term} Packs]
{Number} Refill[s]



Active Ingredient:		
d-cis/trans allethrin	21.97%	
Other Ingredients	78.03%	
Total	100.00%	

Keep Out of Reach of Children
CAUTION
See back [side] [bottom] panel for additional precautionary statements.

[This Package] Contains
 {Number} Butane [ThermaCELL®] Cartridge(s)
 Net Contents ____ fl. oz. [each]
 and
 {Number} [Insect] Repellent Mat(s)
 Net Weight ____ oz. each

EPA Reg. No. 71910-3 EPA Est. 71998-THA-1

Manufactured for:
 The Schawbel Corporation
 26 Crosby Drive
 Bedford, MA 01730

Toll Free: 1-8-NO SKEETERS Email: Consumerquestions@thermacell.net
 Made and Printed in Italy Mats Made in Italy [Manufactured in Philippines]
 Protected by one or more of the following U.S. Patents: 5,700,430; D300,606; 6,033,212 C1

7/10

DIRECTIONS FOR USE

It is a violation of Federal law to use this product in a manner inconsistent with its labeling.

Allow 10 to 30 minutes, depending upon the size of the area, for product to take effect. Each mat lasts a maximum of 4 hours and each cartridge lasts a maximum of 12 {0.73 fl. oz.} [28 {1.58 fl. oz.}] hours. Mats turn from pale blue to white when repellent has been exhausted. Use one appliance for each 225 square feet or 15 feet in diameter. To change mats, make sure appliance is off and cool, then push used mat out by inserting a fresh one. **Use Restrictions:** Only for outdoor use as an insect repellent. Do not use indoors, in tents or in any enclosed area. Do not insert anything other than ThermaCELL® mats into the appliance. Cover or remove all exposed food. Do not leave appliance unattended or use in windy conditions. Do not expose appliance or mats to rain. Do not attach appliance to your body or clothing. Place appliance on a flat, stable surface with the grill facing upward. Clean with a damp cloth only when the appliance is cool and inactive. Butane cartridges other than ThermaCELL® cartridges will not work in the appliance.

ThermaCELL® Mosquito Repellent with Earth Scent

1. Remove one mat from wrapper.
2. With appliance off and completely cool, insert mat under grill.
3. Remove appliance cover and butane cartridge cap. Screw cartridge into appliance and replace appliance cover [if provided].
4. Move [Turn] switch to 'ON', wait 5 to 10 seconds then depress 'START' button 3 to 5 times in rapid succession.
5. Verify appliance is heating; [orange] light will glow. If the light is not glowing, make sure cartridge is completely screwed into place; then repeat step 4. Place on a flat, stable area.
6. When finished using, turn switch to 'OFF'. Allow to completely cool and then store.

Storage and Disposal

Do not contaminate water, food or feed by storage or disposal.

Pesticide Storage: Store unused mats in original box in a cool, dry place inaccessible to children and pets. Store appliance and butane cartridges in original box in a cool, dry place away from sources of heat. **Pesticide Disposal and Container Handling:** Non-refillable container; do not refill or reuse this container. **If cartridge is empty or for used mats:** Do not reuse empty packaging, envelopes [wrappers] or cartridges. Do not puncture or incinerate empty cartridges. Place in trash or offer for recycling if available. **If cartridge is partly filled or for unused mats:** Call your local solid waste agency for disposal instructions. Never place unused mats down any indoor or outdoor drain. **For unwanted appliance:** Place in trash or offer for recycling if available.

Batch Code: _____

PRECAUTIONARY STATEMENTS

Hazards to Humans & Domestic Animals

CAUTION: Harmful if swallowed or absorbed through skin. Causes moderate eye irritation. Avoid contact with skin, eyes or clothing. Wash hands thoroughly with soap and water after handling and before eating, drinking, chewing gum, using tobacco or using the toilet. Remove and wash contaminated clothing before reuse.

First Aid

If Swallowed:	<ul style="list-style-type: none"> • Call a poison control center or doctor immediately for treatment advice. Have person sip a glass of water if able to swallow. Do not induce vomiting unless told to do so by a poison control center or doctor. Do not give anything by mouth to an unconscious person.
If On Skin or Clothing:	<ul style="list-style-type: none"> • Take off contaminated clothing. Rinse skin immediately with plenty of water for 15-20 minutes. Call a poison control center or doctor for treatment advice.
If In Eyes:	<ul style="list-style-type: none"> • Hold eye open and rinse slowly and gently with water for 15-20 minutes. Remove contact lenses, if present, after the first 5 minutes, then continue rinsing eyes. Call a poison control center or doctor for treatment advice.
<p>Have the product container or label with you when calling a poison control center or doctor, or going for treatment. For additional information on this pesticide product (including health concerns, medical emergencies or pesticide incidents), you may call 1-800-xxx-xxxx, Monday through Friday, 8:30 AM to 4:30 PM EST. After 4:30 PM, call your poison control center.</p>	

{Note: The first aid statements' grid format will be used if market label space permits; otherwise a paragraph format will be used.}

Physical and Chemical Hazards

Extremely flammable. Contents under pressure. Keep away from fire, sparks and heated surfaces. Do not puncture or incinerate butane container. Exposure to temperatures above 130°F may cause bursting.

Environmental Hazards

This product is toxic to fish and aquatic invertebrates. Do not apply directly to water. Do not contaminate water when cleaning equipment or disposing of equipment washwater or rinsate. Drift may be hazardous to aquatic organisms in water adjacent to treated areas.

Warranty and Disclaimers: Seller will not be held responsible for damage, injury or poor performance caused by use of other butane cartridges or repellent mats. Seller is not responsible for damage caused by using this butane cartridge in other butane products.

9/10

{Marketing Text for use on boxes:}

- Also works on [repels] black flies
- Buy one get one free
- Convenient
- Coupon [{\$} {number} Rebate[s]] inside
- Easy to use
- Effective
- Portable
- Powered by ThermaCELL®
- Refills [are] available
- Silent
- Value {or other descriptive term} Pack: {number} dollar savings [off regular price]
- Value {or other descriptive term} Pack: {number} [free] refills [appliance,] [compact appliance,] [compact appliance with self-start] inside.

Repellency

- [Each] cartridge lasts a maximum of 12 hours {0.73 fl. oz.}
- Each mat lasts a maximum of 4 hours
- Provides 15 ft diameter repellency
- Provides 225 sq ft of repellency for a maximum of 4 hours per mat
- Repellency lasts a maximum of {number} hours {"number" determined by number of mats in box multiplied by 4 hours per mat}
- Repellent lasts a maximum of 4 hours [per mat]
- Repels mosquitoes, black flies and other flying insects
- Repels mosquitoes and black flies for a maximum of {number} hours {"number" determined by number of mats in box multiplied by 4 hours per mat}
- Repels mosquitoes using a heat-activated repellent mat
- Repels mosquitoes, black flies and other [outdoor] flying insects from an area a maximum of 15 by 15 feet
- Repels mosquitoes, black flies and other [outdoor] insects in an area as large as an average size deck or patio or outdoor campsite [from an average size deck, patio, campsite] for hours
- Repels mosquitoes, black flies and other [outdoor] flying insects creating an [area] of repellency

How it [ThermaCELL® Mosquito Repellents] Works

- Heat-activated repellent mat repels mosquitoes, black flies and other [outdoor] flying insects
- ThermaCELL® cartridge heats the repellent mat

Where Product is Used

- For hunting

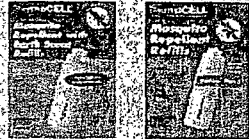
Scent

- Earth Scent {or other appropriate description}
- Earth Cover Scent
- Earth Cover Scent to mask [masks] human odor
- For hunters

- Insect [bug] repellent for hunters
- Masks human odor
- No game-spooking odors
- Place product upwind for maximum repellency
- Repellent does not spook game [Won't spook game]
- Repellent mats with Earth Scent
- Repels bugs and [simultaneously] masks human odor
- Smells like dirt
- ThermaCELL® has added an earth cover scent to its mosquito repellent so hunters can now mask their own scent and keep the bugs away.
- ThermaCELL® Mosquito Repellent with Earth Scent

Other

- Effective repellency
- Refills available wherever Schawbel [ThermaCELL®] repellent products are sold



- The Schawbel Corporation [Schawbel] offers convenient refill kits for use with this product

Mosquitoes, black flies, bugs, outdoor flying insects and biting blackflies can spoil just about any hunting trip. Now you can alleviate the annoyance from these insects for a maximum of four hours [per mat]; it silently and continuously releases a repellent that repels mosquitoes, [biting] black flies, outdoor flying insects and bugs [for a maximum of {number} hours.]. This product efficiently repels and reduces the annoyance of mosquitoes, [biting] black flies, outdoor flying insects and bugs in an area 15 feet in diameter or 225 square feet [an area 15' by 15'] for a maximum of {number} hours. This product is portable. This product is silent. It is effective and easy to use.

{Promotional item language (when appliance is used as a promotional item)}

NWTF Logo National Wild Turkey Federation

Team Realtree logo [America's Most Versatile Camo Pattern]

Realtree Hardwoods Green HD logo

[] Denotes alternate/optional verbiage { } Denotes verbiage not printed on market labeling