



U.S. ENVIRONMENTAL PROTECTION AGENCY

Office of Pesticide Programs  
Registration Division (7505P)  
1200 Pennsylvania Ave., N.W.  
Washington, D.C. 20460

EPA Reg. Number:

71910-2

Date of Issuance:

12/1/2016

NOTICE OF PESTICIDE:

☒ Registration

☒ Reregistration

(under FIFRA, as amended)

Term of Issuance:

Unconditional

Name of Pesticide Product:

Thermacell Mosquito Repellent

Name and Address of Registrant (include ZIP Code):

Timothy H. Dickens, Ph.D.  
Thermacell Repellents, Inc. c/o Scientific Coordination, Inc.  
4629 Cherry Valley Drive  
Rockville, MD 20853

**Note:** Changes in labeling differing in substance from that accepted in connection with this registration must be submitted to and accepted by the Registration Division prior to use of the label in commerce. In any correspondence on this product always refer to the above EPA registration number.

On the basis of information furnished by the registrant, the above named pesticide is hereby registered/reregistered under the Federal Insecticide, Fungicide and Rodenticide Act (FIFRA), as amended. Registration is in no way to be construed as an endorsement or recommendation of this product by the Agency. In order to protect health and the environment, the Administrator, on her/his motion, may at any time suspend or cancel the registration of a pesticide in accordance with the Act. The acceptance of any name in connection with the registration of a product under this Act is not to be construed as giving the registrant a right to exclusive use of the name or to its use if it has been covered by others.

EPA received a label amendment request submitted by email on November 15, 2016. EPA grants this request under the authority of section 3(c)(5) of FIFRA, as amended. With this accepted labeling, all requirements set forth in the Reregistration Eligibility Decision for d-Allethrin have been satisfied. Therefore, EPA reregisters the product listed above. This action is taken under the authority of section 4(g)(2)(c) of FIFRA, as amended. Reregistration under this section does not eliminate the need for continual reassessment of pesticides. EPA may require submission of data at any time to maintain the registration of your product.

Submit one (1) copy of final printed labeling. Amended labeling will supersede all previously accepted labels. A copy of your label stamped "Accepted" is enclosed for your records. Products shipped after 12 months from the date of this Notice or the next printing of your label, whichever occurs first, must bear the new revised label.

Signature of Approving Official:

Kable Bo Davis, Product Manager 03  
Invertebrate & Vertebrate Branch 1, Registration Division (7505P)

Date:

12/1/2016



If these conditions are not complied with, the registration will be subject to cancellation in accordance with FIFRA section 6. Your release for shipment of the product constitutes acceptance of these conditions. A stamped copy of the label is enclosed for your records.

Please also note that the record for this product currently contains the following CSF:

- Basic CSF dated 05/23/2013

If you have any questions, you may contact Julie Breeden-Alemi, DVM at 703-347-0511 or via email at [Breeden-Alemi.Julie@epa.gov](mailto:Breeden-Alemi.Julie@epa.gov).

Enclosure



{FRONT PANEL AND INSERT WHEN APPLICABLE }

{ [ ] Denotes alternate/optional verbiage; { } Denotes verbiage not printed on market labeling; # = Number }

## Thermacell® Mosquito Repellent



{Select appropriate marketing verbiage, and additional graphics and/or symbols from "Marketing Text" section may be added to the front panel}

Active Ingredient:		
d-cis/trans allethrin .....		21.97%
Other Ingredients .....		78.03%
Total .....		100.00%

Contains petroleum distillates

Keep Out of Reach of Children

CAUTION

See [back] [side] [bottom] [panel] [and insert] for additional First Aid and Precautions<sup>1</sup>

Contains

{Number} [Reusable] Appliance [with protective cover]

[#] [Thermacell] Mosquito Repellent Mat(s)

Net Weight [Wt.] \_\_\_\_ oz [each]

Total Net Wt [\_\_\_\_ oz] [\_\_\_\_ g]

[#] [Thermacell] Butane Cartridge(s)

[Net Wt [\_\_\_\_ oz] [\_\_\_\_ g] [each]

Total Net Wt [\_\_\_\_ oz] [\_\_\_\_ g]

**ACCEPTED**

**12/01/2016**

Under the Federal Insecticide, Fungicide  
and Rodenticide Act as amended, for the  
pesticide registered under  
EPA Reg. No.

71910-2

{non-insecticidal item included in the box}

[# poles] [# table stand] [# belt clip] [# water resistant carry pouch] [# holster]

[[#][size] Batteries [for light] [sold seperately]]

EPA Reg. No. 71910-2

EPA Est. No. {Determined at time of order}

©Thermacell Repellents, Inc.

26 Crosby Drive

Bedford, MA 01730

Toll Free: 1-8-NO SKEETERS

Email: Consumerquestions@Thermacell.net

© Copyright 2016 Thermacell Repellents, Inc. All Rights Reserved 11/16

[Made and Printed in {Determined at time of order}]

<sup>1</sup> {NOTE TO REVIEWER: Most of the Thermacell devices use an insert. All outer boxes carry all Precautionary Statements, First Aid and Disposal. When used, inserts also carry all Precautionary Statements, First Aid and Disposal along with the Front Panel and Directions For Use. }



[Mats Made in {Determined at time of order}]  
 Manufactured in {Determined at time of order}  
 [Made in U.S.A from US and imported components {Determined at time of order}]

[Protected by one or more [of the following] U.S. Patents [: 5,700,430; 7,835,631; 6,033,212,] [patent(s) pending]

**{NOTES TO THE REVIEWER}**

- {Numbering items are for document clarity only. Numbered items may appear in a different order on marketing label.}
- {statements may be combined into small paragraphs or remain as bullets on marketing label}
- {"Appliance" is interchangeable throughout with device, appliance, lantern, torch, backpacker, mosquito repeller, {marketing product name}}
- {Mat is interchangeable throughout with "{marketing name} mat". (ie: Thermacell mat, or t-mat, or mosquito mat... see Marketing Statements (Refills) for options)}
- {The fuel source may come in different containers. Cartridge is interchangeable throughout with {marketing name} cartridge, tank, canister, fuel source (ie: cartridge, or T-cartridge or fuel cartridge) see Marketing Statements (Refills) for options)}

{SIDE OR BOTTOM PANEL AND INSERT WHEN APPLICABLE}

**PRECAUTIONARY STATEMENTS**

**Hazards to Humans & Domestic Animals**

**CAUTION:** Contains petroleum distillates. Harmful if swallowed or absorbed through skin. Causes moderate eye irritation. Avoid contact with skin, eyes or clothing. Wash hands thoroughly with soap and water after handling and before eating, drinking, chewing gum, using tobacco or using the toilet. Remove and wash contaminated clothing before reuse.

**First Aid**

If Swallowed:	<ul style="list-style-type: none"> <li>• Call a poison control center or doctor immediately for treatment advice. Do not induce vomiting unless told to do so by a poison control center or doctor. Do not give any liquid to the person. Do not give anything by mouth to an unconscious person.</li> </ul>
If On Skin or Clothing:	<ul style="list-style-type: none"> <li>• Take off contaminated clothing. Rinse skin immediately with plenty of water for 15-20 minutes. Call a poison control center or doctor for treatment advice.</li> </ul>
If In Eyes:	<ul style="list-style-type: none"> <li>• Hold eye open and rinse slowly and gently with water for 15-20 minutes. Remove contact lenses, if present, after the first 5 minutes, then continue rinsing eyes. Call a poison control center or doctor for treatment advice.</li> </ul>
Have the product container or label with you when calling a poison control center or doctor, or going for treatment. For additional information on this pesticide product (including health concerns, medical emergencies or pesticide incidents), you may call 1-866-753-3837, Monday through Friday, 8:30 AM to 4:30 PM EST. After 4:30 PM, call your poison control center.	
Note to Physician: Contains petroleum distillate. Vomiting may cause aspiration pneumonia.	

{Note: The first aid statements' grid format will be used if market label space permits; otherwise a paragraph format will be used.}

**Physical and Chemical Hazards**

*{If Butane is included:}* [Butane Cartridge] Hazard: Extremely flammable. Contents under pressure. Vapors may cause flash fire. Use only in a well ventilated area. Do not use, store, or dispose near heat, sparks, or flames. Do not puncture or incinerate. Containers exposed to direct sunlight or otherwise heated above 120°F (49°C) may burst. Store in cool, dry area. Intentional misuse by deliberately concentrating and inhaling the contents may be harmful or fatal. If vapors are inhaled, remove person to fresh air.



*{If product uses batteries}* [Batteries] [Use only with [provided] [rechargeable] [product name] [lithium ion] [alkaline] battery. Do not pry battery with any instrument or tool or put in a fire. Battery may burst or release toxic materials.]

#### Environmental Hazards

This product is toxic to fish and aquatic invertebrates. Do not apply directly to water. Do not contaminate water when cleaning equipment or disposing of equipment washwater or rinsate. Drift may be hazardous to aquatic organisms in water adjacent to treated areas.



*{SIDE / BACK PANEL OR INSERT WHEN APPLICABLE}*

*{NOTE TO REVIEWER: When a box insert is used the device specific directions, useful tips, use restrictions and troubleshooting are printed on the insert only. The box and insert both will carry, "DIRECTIONS FOR USE - It is a violation of Federal law to use this product in a manner inconsistent with its labeling."}*

## DIRECTIONS FOR USE

It is a violation of Federal law to use this product in a manner inconsistent with its labeling.

[See leaflet inside box for usage directions.]

*{FOR ALL DEVICES: Many of the Useful Tips and Troubleshooting are common for all devices since the mosquito repellency works the same in all devices. The differences occur in the added functions (lights mostly) or which mat is included (4 hour or 12 hour). Only the applicable bullets for each device will appear on the marketing label, in any order, bulleted or numbered.}*

### [Useful Tips:]

- Allow 10 to 30 minutes, depending upon the size of the area, for product to take effect [and repel mosquitoes].
- This product works [well] [best] in outdoor areas where there is minimal air movement, such as [decks], [unenclosed porches], [patios] [yards] and [outdoor campsites].
- [Product may be used for camping.]
- Use one appliance for [225 square feet] [or 15 feet in diameter] [15 ft]. [Use additional devices to cover a larger area.]
- Each [Thermacell] mat lasts a maximum of [4] [12] hours [and each Thermacell® butane cartridge lasts a maximum of 12 hours].
- Provides a maximum of [4] [12] hours mosquito repellency per mat.
- [Original, [Earth Scent] and [Max Life] [All] Thermacell refill mats [work in] [are effective in] Thermacell mosquito repellent appliances.
- [Original] [Max Life] [Mats provide [a maximum of] [up to] [4] [12] hours mosquito repellency per mat [and turn from pale blue to white when mosquito repellent [active ingredient] [is] [has been] [exhausted] [used up] [depleted].]
- Mats turn from pale blue to white when [mosquito repellent] [it] [active ingredient] [is] [has been] [exhausted] [used up] [depleted] [and needs to be replaced].
- [If your device [appliance] fails to heat, it may be out of fuel. Check the fuel level by holding the cartridge vertically and looking at the fuel level. You can see the amount of butane in the cartridge. Replace if empty.]
- [Some visible vapor will appear during use; this is normal]
- [Use additional appliances to cover a larger area.]
- [Match or lighter required to operate.]
- Altitudes [above [#] ft] [can] [may] effect product performance
- [Butane [cartridge]] [canister(s)] works best in [at] altitudes under [#] ft. High altitudes may effect performance.
- Position multiple devices [as needed] [every 15 ft] to protect a larger [patio][area].
- No repositioning of [Max Life] [12-hour] mat [needed] [required]. Mosquito repellent wicks to the center of the mat naturally.

### [Useful Tips:] *{Lanterns and patio devices}*

- Appliance provides [diffused] [gentle] [ambient] [flickering] [bright] light [and] [as it] repels mosquitoes.
- Batteries power the [zone indicator] [light]; [heat from] the Thermacell cartridge activates the repellent mat and provides mosquito repellency [for up to 4 [12] hours] [for an area the size of an average 15 ft deck or campsite].



- [LED lights can be used with or without the mosquito repellent.]
- [Automatic shut-off switch if appliance tips or is lifted.]
- [Post Cap] Cover must be off in order to use the mosquito repellent.] When finished using mosquito repellent, replace cover to keep out water, dirt or other debris.
- [Zone] [Indicator] Light requires [#] [type] batteries
- The mosquito repellent and light features operate [separately] [independently].

#### Use Restrictions: *{for all devices}*

Only for outdoor use as a mosquito repellent. Do not use indoors, in tents or in any enclosed area. Do not insert anything other than Thermacell® mats into the appliance. Cover or remove all exposed food. Do not leave appliance unattended or use in windy conditions. Do not expose appliance(s) or mats to rain. [Do not attach appliance to your body or clothing.] [When using appliance stand,] Place appliance on a flat, stable surface with the grill facing upward. [Press the on-off button to the 'OFF' [out] position when not in use.] Do not touch the grill; [the top of the lantern;] it will be hot after a couple of minutes. Clean with a damp cloth only when the appliance is cool and inactive. Butane cartridges other than Thermacell® cartridges will not work in this appliance. [Only Thermacell® mats and cartridges will work in this appliance.]

#### Troubleshooting *{this section will appear, as appropriate, at the end of directions for use for the individual device}*

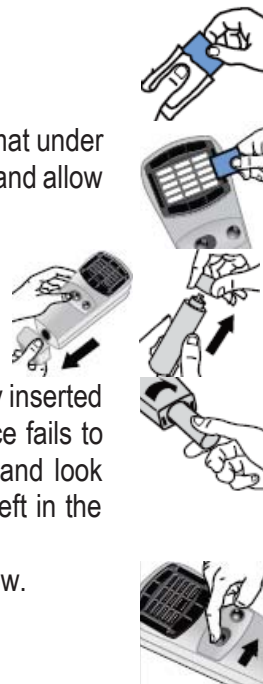
1. If you do not see an orange glow [through view window]
  1. Repeat directions "To Turn ON"
  2. If there is still no orange light visible [in the view window], make sure the [fuel][source][canister][cartridge] is completely screwed into place. Repeat "Turn On" directions. Confirm the orange glow is visible.
  3. Check the amount of fuel in the cartridge. If cartridge is empty or near empty, remove cartridge and replace with a new [Thermacell®][cartridge]. [Then] Repeat "Turn On" directions. Confirm the orange glow is visible.
  4. [Canister] [cartridge] [may not work] [is less effective] at elevations over [#] ft.
  5. The bottom [cover] [door] must be in place and properly closed to allow the fuel to flow.
2. Not sure product is working?
  1. Place product upwind for maximum mosquito repellency. Windy conditions can reduce [product name] [mosquito repellent] effectiveness [against mosquitoes].
  2. Check the [mosquito repellent] mat. Mats turn from pale blue to white when it has been [exhausted][used up][depleted][need to be replaced]. See directions to replace [change] [Thermacell][mosquito repellent] mat
  3. Check the amount of fuel in the cartridge. If cartridge is empty or near empty, remove cartridge and replace with a new [Thermacell][cartridge]. [Then] Repeat "Turn On" directions. Confirm the orange glow is visible [through view window]
3. Still have questions? Call customer service at 1-866-753-3837 or email [Consumerquestions@Thermacell.net](mailto:Consumerquestions@Thermacell.net)





*{1. The following directions will be used when mats are sold with or used in the appliance (Thermacell® Mosquito Repellent) Stock Keeping Unit (SKUs) include but not exclusive to MR-GJ, MR-LJ, MR-RJ, MR-XJ, MR3, MR4x}*

1. Remove one Thermacell® Mosquito Repellent mat from wrapper.
2. Make sure the 'ON/OFF' switch on the appliance is in the 'OFF' position. Insert the mat under the appliance's black grill. To change mats, slide [turn] the 'ON/OFF' switch to 'OFF' and allow the appliance to cool completely. Push the used mat out by inserting a fresh one.
3. Remove the appliance [cover] [cap]. Remove the cap from the cartridge.
4. Screw the cartridge into the opening of the appliance. Make sure the cartridge is fully inserted by turning it clockwise until it stops. Replace the appliance cover. [If your appliance fails to heat, it may be out of fuel. To check the fuel level, hold the appliance vertically and look through the slot on the back of the appliance. You can see the amount of butane left in the cartridge. Replace if empty.]
5. Slide [Turn] the 'ON/OFF' switch to the 'ON' position; the butane gas will begin to flow.



To use the [LED] [blue] [green] [Zone] indicator light:} *{used when appliance has an on/off indicator light feature}*

1. [To install [replace] battery,] Remove [side] [rear] battery compartment cover. Insert [#] [size] [supplied] [not] [included] battery into compartment. Replace battery compartment cover.]

2. [The [LED] [blue] [green] [Zone] indicator light will automatically illuminate once the mosquito repeller begins to [heat the mat] [create the Zone of Mosquito Protection]. It [will] [may] take [#] to [#] minutes for the zone to completely form. Light will turn off when the mat is no longer being heated [indicating appliance may require restarting] [or] [butane replacement] [or] [battery needs replacement]

3. The appliance can be used without the indicator light feature.



When finished using the appliance, slide [turn] the 'ON/OFF' switch to the 'OFF' position, and allow the appliance to cool completely. Appliance is now ready for storage.





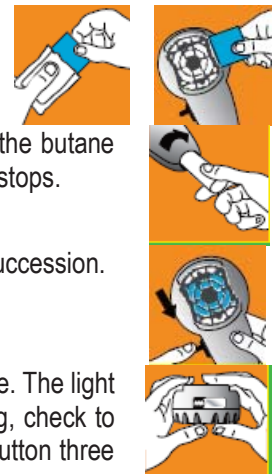
*{2. The following directions will be used when mats are sold with or used in the compact appliance (Thermacell® Compact Mosquito Repellent):}*

1. Remove one Thermacell® Mosquito Repellent mat from wrapper. Insert the mat under the appliance's grill.
2. Remove the butane cartridge cap. Screw the cartridge into the opening of the appliance; the butane gas will begin to flow. Make sure the cartridge is fully inserted by turning it clockwise until it stops. Slide the window on the end of the appliance open to expose the ignition port. Hold a lit match or lighter near the ignition port for 5 seconds or until a popping sound is heard. To verify the appliance is operating, pick it up and look into the ignition port. An orange light inside glows when the appliance is heating. If the light is not glowing, check to make sure the cartridge is completely screwed into place; then once again hold a lit match or lighter near the ignition port. Check to make sure the light is glowing. Slide the window closed to cover the ignition port.
3. Do not place the appliance so that it is standing on the cartridge.
4. When finished using the appliance, unscrew the cartridge at least one full turn and verify that the light has stopped glowing; allow the appliance to cool completely. Appliance is now ready for storage.



*{3. The following directions will be used when mats are sold with or used in the compact appliance with self start (Thermacell® Compact Mosquito Repellent):}*

1. Remove one Thermacell® Mosquito Repellent mat from wrapper. Insert the mat under the appliance's grill.
2. Remove the butane cartridge cap. Screw the cartridge into the opening of the appliance; the butane gas will begin to flow. Make sure the cartridge is fully inserted by turning it clockwise until it stops.
3. Slide the start button toward the cartridge until it clicks. Do this three to five times in rapid succession.
4. To verify the appliance is operating, pick it up and check the lens on the end of the appliance. The light at the end of the appliance glows when the appliance is heating. If the light is not glowing, check to make sure the cartridge is completely screwed into place; then once again click the start button three to five times in rapid succession. Check to make sure the light is glowing.
5. Do not place the appliance so that it is standing on the cartridge.
6. When finished using the appliance, unscrew the cartridge at least one full turn and verify that the light has stopped glowing; allow the appliance to cool completely. Appliance is now ready for storage.



To change mats, unscrew the cartridge at least one full turn and verify that the light has stopped glowing then allow the appliance to cool completely. Push the used mat out by inserting a fresh one. If your appliance fails to heat, it may be out of fuel. Check the fuel level by holding the cartridge vertically and looking at the fuel level. You can see the amount of butane in the cartridge. Replace if empty.



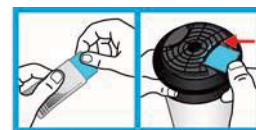


{4. The following directions will be used when mats are sold with or used in the lantern that have a 'twist-start' (Thermacell® Mosquito Repellent Lantern) ([Multipurpose] [Camp] Lantern) SKUs include but not exclusive to: MR-CL, MR-CLC, MR-9SB -:}

*{On the marketing label, the Mosquito Repellent directions may come before the Light directions}*

To Use the Light: [The light may be used with the mosquito repellent or independently]

1. 1. Open the battery compartment and insert [#] [size] [rechargeable] batteries. [Ensure the batteries are properly aligned with the +/- signs.] [Do not mix old and new batteries.] [For best performance] [do not mix alkaline, standard or rechargeable batteries.] Close the battery compartment. [To recharge the batteries, use the included cord inserting the small end of the cord into the base of the lantern and inserting the plug into a powered outlet.] [The [alkaline] [rechargeable] batteries will provide light for a maximum of [#] hours [on the LOW setting and [#] hours on the HIGH setting].



*2(a). {for camp lanterns including but not limited to MR-CL, MR-CLC – Shown to the right}* To use the light, push the button on the base consecutively for Low, Medium, High, SOS and OFF. Lantern light can be turned off at any time by holding the button in for 3 seconds. [The glowing power button also shows remaining battery life: blue = adequate power, yellow = power is getting low, red = change battery soon.] Battery life does not affect mosquito repellent functions.

*2(b). {for lanterns including but not limited to MR-9S, MR-9SB – Shown below right}* To use the light, locate the switch under the lantern. Slide the ON/OFF switch to the ON position To turn the light off slide the switch to the OFF position. Battery life does not affect mosquito repellent functions.

{Some lanterns come with a remote control feature} [On the remote control [press the ON button to turn the light on, and the OFF button to turn the light off.] [Press the button for the desired setting.]

*To Use the Mosquito Repellent:*

1. Remove one Thermacell® Mosquito Repellent mat from wrapper. Insert the mat under the grill [at the [top] of the lantern].
2. [Remove] [Turn] [Rotate] [top of lantern] [globe] [base] [bottom] [and] [remove] [from] [lantern] [base] [globe]]. Remove cap from the butane cartridge and screw cartridge into lantern. Turn cartridge clockwise until it stops. Make sure the cartridge is fully inserted. [Replace globe.] [Replace base.]



3. To activate the mosquito repellent, [raise the [handle] [grasp the lantern [collar] [base] and rotate [turn] [collar] [base] to the right until the [indicator] [arrow] [line] points to "ON" [position] [is in the "ON" position.] The gas will begin to flow.
4. Wait approximately 5 to 10 seconds then rotate lantern collar further to the right until the [indicator] [arrow] [line] points to "START" [is in the "START" position]. You should hear a clicking noise. [Press the START button].
5. To verify that the mosquito repellent is activated look at the [circular] [oval] view hole located [on the lantern] [collar] [lid] [to the right of the "START" button]. An orange light will glow. If there is no orange light, [rotate] [turn] [indicator] [arrow] [line] [back] [to the "ON" position] [and repeat rotation] to the "START" position two to three times in rapid succession.
6. [If there is still no orange light visible in the view hole, make sure the cartridge is completely screwed into place. Also check the amount of fuel in the cartridge. If cartridge is empty or near empty, remove cartridge and replace with a new Thermacell® cartridge. Then repeat steps 3-5.]
7. When finished using the lantern, rotate [turn] the lantern collar to the left until the [indicator] [arrow] [line] [points to "OFF"] [is in the "OFF" position]. Allow lantern to cool completely before storing. [Transport or] [Store lantern with handle in the down position.] [Safety Feature:] [When handle is down, and [Indicator] arrow is in the "OFF" position, product cannot be turned on.] [When lantern is in the "OFF" position, and handle is down, the handle locks collar in place preventing product from turning on].
8. To replace a used mat, make sure [indicator] [arrow] [line] [points to "OFF"] [is in the "OFF" position] and allow lantern grill to cool. Push the used mat out by inserting a fresh mat.







{5. The following directions will be used when mats are sold with or used in devices with 'switch start'. SKUs include but not exclusive to MR-9L, MR-9W:}

*{On the marketing label, the Mosquito Repellent directions may come before the Light directions}*

#### *To Use the Light:*

1. Open the battery compartment and insert [#] [size] [rechargeable] batteries. [Ensure the batteries are properly aligned with the +/- signs.] Close the battery compartment. [To recharge the batteries, use the included cord inserting the small end of the cord into the base of the lantern and inserting the plug into a powered outlet.] .
2. To use the light, locate the light switch on the base of the lantern. [Press the switch towards the candle icon to select a flickering light or towards the light bulb icon for a steady light.] [towards LO for a soft light or HI for a brighter light.] To turn the light off press the ON/OFF switch to the center position.
3. {Some lanterns come with a remote control feature} [On the remote control [press the ON button to turn the light on, and the OFF button to turn the light off.] [Press the button for the desired setting.]
4. [The light may be used with the mosquito repellent or independently.]



#### *To Use the Mosquito Repellent:*

1. Remove one Thermacell® mat from wrapper.
2. [Make sure the 'ON/OFF' button is in the 'OFF' position.] Insert the [mosquito repellent] mat under the grill [at the top of the lantern].
3. Remove [top of lantern] [and globe] [from] [base] [lantern bottom] [by squeezing the latch tabs and lifting out the top of lantern until it is fully removed from the base].
4. Remove cap from butane cartridge and [screw] [insert] cartridge into lantern. Turn cartridge clockwise until it stops. Make sure cartridge is fully inserted.

[Return lantern [globe] [bottom]] [onto base].

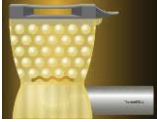




5. To activate the mosquito repellent, slide [turn] [push] the 'ON/OFF' [button] [knob] [dial] to the 'ON' position. The gas will begin to flow.
6. Wait approximately 5 to 10 seconds and then depress the 'START' button three to five times in rapid succession.
7. [To verify that the mosquito repellent is activated look at the circular view hole located [at the top] [of] [on] the lantern. An orange light will glow. If there is no orange light, check to make sure the lantern is 'ON' and the cartridge is completely screwed into place. Also check the fuel level in the cartridge. If the fuel level in the cartridge is empty or near empty, remove cartridge and replace with a new Thermacell® cartridge. Then once again turn the lantern 'ON' and depress the start button three to five times in rapid succession. Check again to make sure the orange light is glowing.]
8. When finished using the lantern [slide] [turn] [push] the 'ON/OFF' button to the 'OFF' position. If using the light, push [turn] [slide] the light switch to "OFF" to extinguish the lantern light. Allow lantern to cool completely. Lantern is now ready for storage.
9. To replace a used mat, turn off lantern and allow to cool completely. Push the used mat out by inserting a fresh mat.







*{6. The following directions will be used when mats are sold with or used in the mini lantern (Thermacell® Mini Mosquito Repellent Lantern):}*

1. Remove one Thermacell® Mosquito Repellent mat from wrapper.
2. Insert the mat under the grill at the top of the lantern.
3. Remove the butane cartridge cap and screw cartridge into the opening in the lantern base by turning the cartridge clockwise until it stops. The gas will begin to flow. Make sure the cartridge is fully inserted.
4. Flip open the top of the lantern and hold a lit match or lighter near the white tube in the center of the globe. Verify the lantern is operating (lantern will glow), then close the top of the lantern. If the lantern fails to glow check to make sure the cartridge is fully inserted. Also check the cartridge's fuel level. If the fuel level in the cartridge is empty, replace the cartridge and repeat steps 3 and 4.
5. If you have to re-light the lantern, make sure it has completely cooled before opening the top.
6. To move the lantern while it is operating, pick it up by the base while holding the button on the side of the base with your thumb. This will temporarily prevent the automatic shut-off switch from extinguishing the flame when you pick up the lantern.
7. When finished using the lantern, unscrew the cartridge at least one full turn and verify that the lantern is no longer glowing. Allow the lantern to completely cool before storing.
8. To replace a used mat, turn off lantern by unscrewing the cartridge and allow lantern to cool completely. Push the used mat out by inserting a fresh mat.





*{7. The following directions will be used when mats are sold with or used in the mini lantern with self start (Thermacell® Mini Mosquito Repellent Lantern):}*

1. Remove one Thermacell® Mosquito Repellent mat from wrapper.
2. Insert the mat under the grill at the top of the lantern.
3. Remove the butane cartridge cap and screw cartridge into the opening in the lantern base by turning the cartridge clockwise until it stops. Make sure the cartridge is fully inserted.
4. The gas will begin to flow. [Wait approximately 5 to 10 seconds then] depress the start button three to five times in rapid succession.
5. Verify the lantern is operating (lantern will glow). If the lantern fails to glow check to make sure the cartridge is fully inserted. Also check the cartridge's fuel level. If the fuel level in the cartridge is empty, replace the cartridge and repeat steps 3 and 4.
6. To move the lantern while it is operating, pick it up by the base while holding the button on the side of the base with your thumb. This will temporarily prevent the automatic shut-off switch from extinguishing the flame when you pick up the lantern.
7. When finished using the lantern, unscrew the cartridge at least one full turn and verify that the lantern is no longer glowing. Allow the lantern to completely cool before storing.
8. To replace a used mat, turn off lantern by unscrewing the cartridge at least one full turn and allow lantern to cool completely. Push the used mat out by inserting a fresh mat.



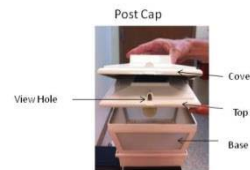


*{8. The following directions will be used when mats are sold with or used in the mini lantern with self start and on-off button (also Thermacell® Mini Mosquito Repellent Lantern):}*

1. Remove one Thermacell® Mosquito Repellent mat from wrapper.
2. Make sure the on-off button is in the “OFF” [(out)] position. Insert the mat under the grill at the top of the lantern.
3. Remove the butane cartridge cap and screw cartridge into the opening in the lantern base by turning the cartridge clockwise until it stops. Make sure the cartridge is fully inserted.
4. Push [turn] the on-off button to the ‘ON’ [(in)] position; the gas will begin to flow.
5. Wait approximately 5 to 10 seconds then depress the ‘START’ button three to five times in rapid succession.
6. Verify the lantern is operating (lantern will glow). If the lantern fails to glow check to make sure that the on-off button is in the ‘ON’ [(in)] position and the cartridge is fully inserted. Also check the cartridge’s fuel level. If the fuel level in the cartridge is empty turn off the lantern, replace the cartridge and repeat steps 3 through 6.
7. To move the lantern while it is operating, pick it up by the base while holding the button on the side of the base with your thumb. This will temporarily prevent the automatic shut-off switch from extinguishing the flame when you pick up the lantern.
8. When finished using the lantern, press [turn] the on-off button to the ‘OFF’ [(out)] position and verify that the lantern is no longer glowing. Allow the lantern to completely cool before storing.
9. To replace a used mat, turn off lantern by pressing [turning] the on-off button to the ‘OFF’ [(out)] position and allow lantern to cool completely. Push the used mat out by inserting a fresh mat.



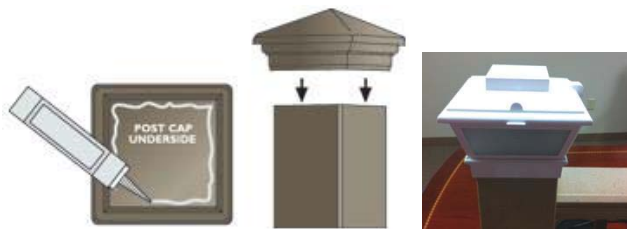
*{9. The following directions will be used when mats are sold with or used in the Post Cap lantern (also Thermacell® Mosquito Repellent Post Cap Lantern):}*



*{(Note to Reviewer: Photos and Artist Illustrations Only. Actual product photos or artist renditions will be used on market labeling.)}*

### ***To install post cap***

To secure post cap to the post, apply an exterior grade construction adhesive liberally to the inside of the post cap and place firmly on the post. Position post cap on post with hinges facing the outside of deck and view hole facing the inside of deck



### ***To Set-up Mosquito Repellent***

1. *Open post cap cover by pulling up on tab. Cover must be open in order to use the mosquito repellent.*
2. *Remove one Thermacell Mosquito Repellent mat from wrapper. Insert mat under grill.*
3. *Remove post cap top by pressing in side of post cap where it says "PRESS" and lifting top off of post cap base.*
4. *Remove butane cartridge cap and screw cartridge into the underside of the post cap top. Turn cartridge clockwise until it stops and is fully inserted.*
5. *Replace post cap top on base with view hole facing the inside of deck, hinges facing outside of deck. Press down on post cap until it clicks into place.*





### *To [Operate] [Use] [Activate] Mosquito Repellent:*

1. *Cover must be open in order to use the mosquito repellent.*

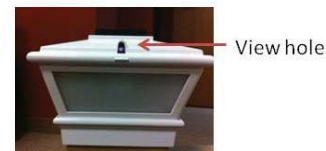
Pull the “ON/OFF” switch to the “ON” position. The gas will begin to flow.



2. Wait 5 to 10 seconds, then pull the “ON/OFF” switch out to the “START” position. You will hear a clicking noise.



3. To verify the mosquito repellent has been activated, look at the view hole on the roof. An orange and blue light will glow. If there is no orange/blue light, repeat steps 1 and 2. If there is still no orange/blue light visible in view hole, make sure the cartridge is completely screwed into place. Also check the amount of fuel in the cartridge. If cartridge is empty or near empty, replace with a new Thermacell cartridge. Then repeat steps 1 & 2.



4. When finished using the mosquito repellent, [push] the “ON/OFF” [switch] to the “OFF” position. Allow [post cap] to cool completely. Close cover.
5. To replace a used mat, make sure “ON/OFF” [tab] [switch] is in the “OFF” position, and allow [device] [post cap] to cool. Push the used mat out by inserting a new mat.

### *For units with LED lights:*

To [Operate] [Use] [Activate] the light

1. Remove post cap top by pressing in side of post cap where it says “PRESS” and lifting top off of post cap base. [Remove battery cover]. Install [#] [size] batteries [included [not included]]. [Replace battery cover and] [replace] [top portion of] [appliance] [post cap] [roof] [top] on base. [Press down on post cap until it clicks into place.] The batteries power [#] LED lights and will provide light for a maximum of [#] hours.
2. To turn LED lights on, [push] [slide] [turn] the [color] switch to the “ON” position. If LED lights do not turn on, replace batteries. When finished using LED light, [push] [slide] [turn] the [switch] to the “OFF” position. LED lights can be used with or without the mosquito repellent.





{10. The following directions will be used when mats are sold with or used in the Torch lantern (also Thermacell® Mosquito Repellent Backyard Torch Lantern): SKUs may include but not exclusive to MR-KA, MR-KB}

{Note to Reviewer: Photos and Artist Illustrations Only. Actual product photos or artist renditions will be used on market labeling.}

Contains: {optional language – Torches are either sold in a box with an optional table stand feature (pole assembly required), or assembled on a {number} ft pole}

- [Lantern Stand]
- [#] [Pole Pieces] [Pole]
- [Table Stand]
- [Lantern] Cover
- [#] Thermacell Mosquito Repellent Cartridge(s)
- [#] Thermacell Mosquito Repellent Mats

[To Assemble Torch Pole [or] [and] [Lantern Stand]

Torch Pole: [Assemble] [the] [#] pole pieces [by inserting and turning pieces [clockwise] until tight]. Insert pole into the ground a minimum of [#] inches until secure. [Place torch on pole].

[Lantern Stand] To use the torch as a lantern, insert torch in the lantern stand provided.

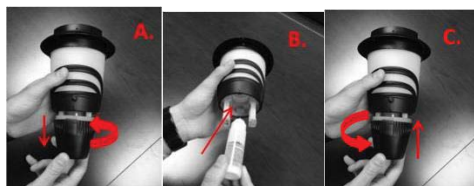
Alternate:

[To Use Torch Pole]

[Insert pole into the ground a minimum of [#] inches until secure]

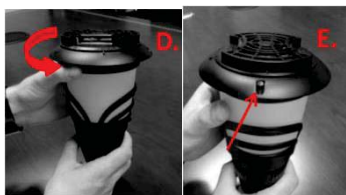
To Use the Mosquito Repellent:

1. Insert repellent mat: Remove [protective] cover from torch. Remove one [Thermacell® Mosquito Repellent] mat from wrapper. Insert mat under [torch] grill.
2. Insert Thermacell butane cartridge: Rotate Torch globe so that arrow points to “OPEN” [and remove globe from base] [A]. Remove Thermacell cartridge cap and insert cartridge into opening between battery compartments [B]. Turn cartridge clockwise until it stops. Replace globe [onto base], turning until arrow points to “CLOSE” [C].



3. Turn on: Rotate torch [collar] [rim] [top] to the right until indicator line points to “ON”. The gas will start [begin] to flow. Wait 5 to 10 seconds then rotate torch collar until indicator line points to “START” and you hear a clicking sound [D]. To verify that the [mosquito repellent] [appliance][torch] has been activated, look [for an orange glow] [in] [at] the oval view hole located on the torch [collar] [rim] [top] to the right of the “START” button [E]. [An orange light will glow.] Place torch on pole or lantern stand.





4. Turn off: When finished using, rotate the torch [collar] [rim] [top] to the left until the indicator line points to "OFF." Replace [protective] cover by inserting cover [flap] [tab] [tongue] [circle] [on the cover] into the small oval cutout [on torch [top] [rim] [collar] [F]]. [You may replace [protective] [safety] cover even if grill is still warm. Replacing [protective] cover on torch ensures product is shut off and protects torch from rain, dirt and debris. Torch cannot be turned on when protective cover is in place.] [Allow Torch to cool completely.] Leave torch outside or store.
5. To replace [change] a mat: When the mat turns white, it is time to replace it. When replacing the mat, make sure indicator line is in the "OFF" position and allow grill to cool. Push the used mat out by inserting a fresh mat.



Troubleshooting: If torch does not turn on, verify that there is no orange [light] [glow] in the view hole. If there is no orange [light] [glow], rotate indicator line back to the "ON" position and repeat rotation to the "START" position two to three times in rapid succession. If there is still no orange [light] [glow] visible in the view hole, make sure the cartridge is completely screwed into place. Also check the amount of fuel in the cartridge. If cartridge is empty or near empty, remove cartridge and replace with a new Thermacell® cartridge. Then repeat step #[3]

#### To Use the Light:

1. Remove lantern from torch pole or lantern stand. Rotate torch base so that arrow points to "OPEN" and pull base from globe. [In the globe], insert [#] [size] batteries [(not included)] in the battery compartments according to the "+ -" signs [G]. The batteries power [#] LED lights and will provide torch light for a maximum of [#] hours.
2. Locate the black button on the side of the torch. Push button to turn light on and off. If torch light does not turn on, check batteries.
3. Replace base, turning until [arrow] points to "CLOSE". Place torch on pole or lantern stand.







*{11. The following directions will be used when mats are sold with or used in lightweight "high adventure camping" (Backpacking) device that use a portable isobutane canister fuel source (not included). ie: "Backpacker" SKUs may include but not exclusive to MR-BP}*

### To Use the Mosquito Repellent

1. **Insert Mat:** Remove one Thermacell® Mosquito Repellent mat from wrapper. Insert the [mosquito repellent] mat under the [appliance's] black grill.
2. **Attach canister:** Remove the appliance [rubber] [plastic] [cover] [cap] [plug] [lid]. [Remove the canister [cover][lid][cap] [if present]]. Keep canister in upright position. Screw the appliance into the [opening] [top] of the canister. Make sure canister is fully inserted by turning it until it stops. Do not over tighten.
3. **Turn on:** [Slide][Turn][Flip] the 'ON/OFF' switch to the 'ON' position; [the [fuel][gas] will begin to flow.]  
Wait approximately [#] seconds then [pinch] [squeeze] [pull] [slide] the start [button][switch] [tab] [upwards] [towards the grill] [once] [until it clicks].

Look through view hole [above the switch] [on the] [panel][side] [opposite the start] [button][switch] to verify there is an orange glow [indicating appliance is on]

4. **Turn off:**
  - a. [slide] [turn] [flip] the 'ON/OFF' [button][switch] to the 'OFF' position
  - b. Grill and top area may be hot. Allow the appliance to cool completely.
  - c. Remove the canister by turning counter clockwise. Replace [cap] [plug]
  - d. Store in [a dry place] [travel bag] [provided]
5. **To replace [change] [Thermacell] mat:** [Mats turn from [pale] blue to white when mosquito repellent [active ingredient] has been [exhausted][used up][depleted][need to be replaced]. [Turn] Appliance [should be] OFF. Allow grill to cool. Push the used mat out by inserting a [new] mat.







*{12. The following directions will be used when mats are sold with or used in devices that have an indicator light and single or multi-cartridge feature. SKU includes but not exclusive to MR-IPA }*

#### To install the ZoneCheck Monitor battery:

To install [replace] battery, remove bottom compartment cover. Remove the battery compartment. Insert [#] [supplied] [not] [included] [battery type] batteries and gently press battery compartment back in original position. Replace compartment cover.] [To recharge the batteries, use the included cord inserting the small end of the cord into the base of the lantern and inserting the plug into a powered outlet.]

#### To Use the Mosquito Repellent {MULTI-CARTRIDGE PORT}

1. Insert cartridges: [Open][Remove] the [appliance] [rubber] [plastic] [cover] [at the bottom of the appliance]. [Remove the cartridge cap(s) [if present]]. Place 1 to 4 Thermacell cartridges into the ports. Multiple cartridges extend runtime, and do not affect performance. If using only 2 cartridges, place them in opposite ports (as shown). [Firmly] close cover [on the bottom of the device].

2. Insert mat: Remove [protective][cover] from appliance. [Store][Place] the cover under the device [covering the [fuel source][cartridge] access point.] Remove one Thermacell® Mosquito Repellent mat from wrapper. Insert the mat under the grill [at the [top] of the device].

3. Turn on: Place appliance on a flat level surface. [Twist] [turn] [Move switch] [base] to ON position. [The gas will begin to flow.] [The [ZoneCheck] indicator light [will begin to pulse [slow][fast {color}]. Wait approximately [#] seconds then [twist] [turn] to the [START] position [once] [until it clicks]. [The [intermittent] [pulsing light] [will change to {color} in a few minutes, [indicating] [indicates] [the zone is being created] [the device is operating] [the device is [performing][warm][in use]].[if the light turns solid {color}, the device is not running properly, restart.]

4. Turn off: [Twist] [turn] [Move switch] to the OFF position. Allow device to cool. Return [cover] [cap] [lid] to original position on top of the appliance.

5.To [replace] [change] [Thermacell][mosquito repellent] mat: [Mats turn from pale blue to white when mosquito repellent [active ingredient] has been [exhausted] [used up] [depleted] [need to be replaced]. Appliance should be OFF. Allow grill to cool. Push the used mat out by inserting a [new] mat.





*{SIDE / BOTTOM PANEL AND INSERT WHEN APPLICABLE}***Storage and Disposal**

Do not contaminate water, food or feed by storage or disposal.

**Pesticide Storage:** Store unused mats in original box in a cool, dry place inaccessible to children and pets.

Store appliance [lantern] [torch] and butane cartridges in original box in a cool, dry place away from sources of heat. [Store device on [deck] [post] with cover closed [to keep out dirt and water.] [Store [alkaline] [lithium] batteries in cool, dry place away from heat or open flame.] **Pesticide Disposal and Container Handling:** Non-refillable container; do not refill or reuse this container. If cartridge is empty or for used mats: Do not reuse empty packaging, envelopes [wrappers] or cartridges. Do not puncture or incinerate empty cartridges. Place in trash or offer for recycling if available. If cartridge is partly filled or for unused mats: Call your local solid waste agency for disposal instructions. Never place unused mats down any indoor or outdoor drain. For unwanted appliance [lantern] [torch]: Place in trash or offer for recycling if available.

Batch Code [Lot Number]: \_\_\_\_\_

[Guarantee:]

*{Appears on side or bottom of Box}*

100 % Satisfaction Guaranteed *{may appear as text or graphically enhanced text}*

At Thermacell, we stand behind of our products and our quality. If you are not completely satisfied with your Thermacell purchase, you may return it to us for repair, replacement, or refund. [\*Please see Guarantee [section] [inside] on [bottom] [side] [of] [box][package][bag] for details.]

*{Entire Guarantee}*

[At Thermacell, we stand behind of our products and our quality]. If you are not completely satisfied with your Thermacell purchase, you may return it to us for repair, replacement, or refund. [We will repair or replace product up to [#] years from date of purchase]

[For refunds, requests must be received with in [#] days from date of purchase with the original store receipt. Any product received later than [#] days from the date of purchase will be replaced or repaired by Thermacell at the company's option. Please call customer service at 866-753-3837 for a return authorization number. Ship only the Thermacell device [no repellent mats, no butane cartridge] back to us.]

**[Warranty and Disclaimers:** To the extent applicable by law, seller will not be held responsible for damage, injury or poor performance caused by use of other butane cartridges or repellent mats. Seller is not responsible for damage caused by using this butane cartridge in other butane products.]

Thermacell® is a Registered Trademark of Thermacell Repellents, Inc.



*{Mat Label}***Thermacell® Mosquito Repellent Mat****Active Ingredient:**

d-cis/trans allethrin ..... 21.97%

**Other Ingredients** ..... 78.03%

Total ..... 100.00%

Contains petroleum distillates

**Keep Out of Reach of Children****CAUTION**See outer carton for additional First Aid, precautionary statements  
and Directions for Use.

Net Weight [Wt.]: \_\_\_\_ oz

EPA Reg. No. 71910-2

EPA Est. No. {Determined at time of order}

Manufactured for:

©Thermacell Repellents, Inc.

[26 Crosby Drive] Bedford, MA 01730-1402

Made [and Printed] in Italy

*{Thermacell® Butane Cartridge Labeling}***Thermacell® Butane Cartridge****Keep Out of Reach of Children****DANGER<sup>2</sup>****Physical and Chemical Hazards**

Extremely flammable. Contents under pressure. [See box for additional precautions.] [Vapors may cause flash fire. Use only in a well ventilated area. Do not use, store, or dispose near heat, sparks, or flames. Do not puncture or incinerate. Containers exposed to direct sunlight or otherwise heated above 120°F (49°C) may burst. Store in cool, dry area. Intentional misuse by deliberately concentrating and inhaling the contents may be harmful or fatal. If vapors are inhaled, remove person to fresh air. Use only with Thermacell® products.]

[Net Wt \_\_\_\_ oz

Thermacell Repellents Inc.

[26 Crosby Drive] Bedford, MA 01730-1402

[Thermacell® is a Registered Trademark of Thermacell Repellents, Inc.]

<sup>2</sup> { NOTE TO REVIEWER: This use of DANGER and the text for the butane cartridge are in accordance with CPSC and Federal Hazardous Substances Act (FHSA) Requirements. }



{ALL DEVICES Labeling (lanterns, appliance, torch, devices)}

**{Appliance Labeling}**

*{Promotional Item Language (when appliance is used as a promotional item):}*

NWTF Logo National Wild Turkey Federation

Team Realtree Logo [America's Most Versatile Camo Pattern]

Realtree Hardwoods Green HD Logo

**Thermacell® Mosquito Repellent [Appliance]**

*{Labeling for device top}*

**ATTENTION - HOT SURFACE [Insert mat under grill]**

*{Labeling for device base or backpacker travel bag and/or tag or IPA lid or other integral part of the device}*

**Keep Out of Reach of Children**

**CAUTION**

**Read *Directions for Use* , *First Aid and Precautionary Statements* on box prior to use.**

Only for outdoor use as a mosquito repellent. Do not use indoors, in a tent or any enclosed area. Do not touch the [black] grill while the appliance is in use. Grill is hot while in use. Place on a flat, stable surface [with the grill facing upward.] [or on pole as directed] [Do not cover with any material while in use.] [Do not expose appliance to rain.] Butane cartridges and mats other than Thermacell® will not work in this appliance.] [Use only Thermacell refills] [Use only Thermacell cartridges.]

EPA Reg. No. 71910-2 EPA Est. No. {*Determined at time of order*}

©Thermacell Repellents, Inc.

[26 Crosby Drive] Bedford, MA 01730-1402

781-541-6900

U.S. Patent Nos. 5,700,430; D423,071

[Thermacell® is a Registered Trademark of Thermacell Repellents, Inc.]



{FRONT PANEL AND INSERT WHEN APPLICABLE }

# Thermacell® Mosquito Repellent

## REFILLS

{Select appropriate marketing verbiage, and additional graphics and/or symbols from "Marketing Text" section may be added to the front panel}

### Active Ingredient:

d-cis/trans allethrin .....	21.97%
Other Ingredients .....	78.03%
Total .....	100.00%

Contains petroleum distillates

Keep Out of Reach of Children

### CAUTION

See [back] [side] [bottom] [panel] [and insert] for additional First Aid and Precautions<sup>3</sup>

### Contains

[#] [Thermacell®] Mosquito Repellent Mat(s)

Net Weight [Wt.] \_\_\_\_ oz each

Total Net Wt [\_\_\_\_ oz] [\_\_\_\_ g]]

[#] Butane [Thermacell®] Cartridge(s)

[Net Wt \_\_\_\_ oz [each]

Total Net Wt [\_\_\_\_ oz] [\_\_\_\_ g]]

EPA Reg. No. 71910-2

EPA Est. No. {Determined at time of order}

### Manufactured for:

©Thermacell Repellents, Inc.

26 Crosby Drive

Bedford, MA 01730

Toll Free: 1-8-NO SKEETERS

Email: Consumerquestions@Thermacell.net

[Made and Printed {Determined at time of order}]

[Mats Made in {Determined at time of order}]

Manufactured in {Determined at time of order}

[Protected by one or more of the following U.S. Patents: 5,700,430; 7,835,631 B2; 6,033,212 C1, patent(s) pending]

<sup>3</sup> {NOTE TO REVIEWER: All outer boxes carry all Precautionary Statements, First Aid and Disposal. When used, inserts also carry all Precautionary Statements, First Aid and Disposal along with the Front Panel and Directions For Use. }



{SIDE / BOTTOM PANEL AND INSERT WHEN APPLICABLE}

## PRECAUTIONARY STATEMENTS

### Hazards to Humans & Domestic Animals

**CAUTION:** Contains petroleum distillates. Harmful if swallowed or absorbed through skin. Causes moderate eye irritation. Avoid contact with skin, eyes or clothing. Wash hands thoroughly with soap and water after handling and before eating, drinking, chewing gum, using tobacco or using the toilet. Remove and wash contaminated clothing before reuse.

### First Aid

If Swallowed:	<ul style="list-style-type: none"> <li>Call a poison control center or doctor immediately for treatment advice. Do not induce vomiting unless told to do so by a poison control center or doctor. Do not give any liquid to the person. Do not give anything by mouth to an unconscious person.</li> </ul>
If On Skin or Clothing:	<ul style="list-style-type: none"> <li>Take off contaminated clothing. Rinse skin immediately with plenty of water for 15-20 minutes. Call a poison control center or doctor for treatment advice.</li> </ul>
If In Eyes:	<ul style="list-style-type: none"> <li>Hold eye open and rinse slowly and gently with water for 15-20 minutes. Remove contact lenses, if present, after the first 5 minutes, then continue rinsing eyes. Call a poison control center or doctor for treatment advice.</li> </ul>
Have the product container or label with you when calling a poison control center or doctor, or going for treatment. For additional information on this pesticide product (including health concerns, medical emergencies or pesticide incidents), you may call 1-866-753-3837, Monday through Friday, 8:30 AM to 4:30 PM EST. After 4:30 PM, call your poison control center.	
<b>Note to Physician:</b> Contains petroleum distillate. Vomiting may cause aspiration pneumonia.	

{Note: The first aid statements' grid format will be used if market label space permits; otherwise a paragraph format will be used.}

### Physical and Chemical Hazards

*{If Butane is included:}* [Butane Cartridge] Hazard: Extremely flammable. Contents under pressure. Vapors may cause flash fire. Use only in a well ventilated area. Do not use, store, or dispose near heat, sparks, or flames. Do not puncture or incinerate. Containers exposed to direct sunlight or otherwise heated above 120°F (49°C) may burst. Store in cool, dry area. Intentional misuse by deliberately concentrating and inhaling the contents may be harmful or fatal. If vapors are inhaled, remove person to fresh air.

### Environmental Hazards

This product is toxic to fish and aquatic invertebrates. Do not apply directly to water. Do not contaminate water when cleaning equipment or disposing of equipment washwater or rinsate. Drift may be hazardous to aquatic organisms in water adjacent to treated areas.



{SIDE / BACK PANEL OR INSERT WHEN APPLICABLE}

*{NOTE TO REVIEWER: When a box insert is used the device specific directions, useful tips, use restrictions and troubleshooting are printed on the insert only. The box and insert both will carry, "DIRECTIONS FOR USE - It is a violation of Federal law to use this product in a manner inconsistent with its labeling."}*

## DIRECTIONS FOR USE

It is a violation of Federal law to use this product in a manner inconsistent with its labeling.

[See leaflet inside box for usage directions.]

*{NOTE TO REVIEWER: "Directions for use" through "Use Restrictions" have been combined with devices at the beginning of the manuscript and will also be used on Refills.}*

[Please refer to the instruction booklet that came with your device for specific features and directions.]

### To Use Mosquito Repellent

1. Remove one mat from wrapper.
2. With Thermacell device off and completely cool, insert and center mat under grill.
3. Attach Thermacell device to the power source specified on the device directions.
4. Follow your device directions to activate mosquito repellent.

### *{If Butane is included}*

#### To Insert Butane Cartridge

1. Remove the appliance cover. Remove the cap from the butane cartridge.
2. Screw the cartridge into the opening of the Thermacell appliance. Make sure canister is fully inserted by turning it until it stops. Do not over tighten.
3. Replace the appliance cover.

#### To Turn On/ Off

Refer to the appliance's packaging.

#### To Replace Mosquito Repellent Mat

Make sure device is off and cool; push used mat out by inserting a fresh one.



{SIDE / BOTTOM PANEL AND INSERT WHEN APPLICABLE}

#### Storage and Disposal

Do not contaminate water, food or feed by storage or disposal.

**Pesticide Storage:** Store unused mats in original box in a cool, dry place inaccessible to children and pets. Store appliance [lantern] [torch] [unit] and butane cartridges in original box in a cool, dry place away from sources of heat. Store Post Cap on [deck] [post] with cover closed [to keep out dirt and water]. [Store [alkaline] [lithium] batteries in cool, dry place away from heat or open flame.] **Pesticide Disposal and Container Handling:** Non-refillable container; do not refill or reuse this container. If cartridge is empty or for used mats: Do not reuse empty packaging, envelopes [wrappers] or cartridges. Do not puncture or incinerate empty cartridges. Place in trash or offer for recycling if available. If cartridge is partly filled or for unused mats: Call your local solid waste agency for disposal instructions. Never place unused mats down any indoor or outdoor drain. For unwanted appliance [lantern] [torch]: Place in trash or offer for recycling if available.

Batch Code [Lot Number]: \_\_\_\_\_

[Warranty and Disclaimers: Seller will not be held responsible for damage, injury or poor performance caused by use of other butane cartridges or repellent mats. Seller is not responsible for damage caused by using this butane cartridge in other butane products.]



## {OPTIONAL MARKETING TEXT, SYMBOLS &amp; GRAPHICS}

## {Basic Information}

1. Buy one get one free
2. Lightweight and Silent [and Portable]
3. Clean, simple, easy to use.
4. Scent-free
5. no unpleasant odor
6. No candle(s)
7. No open flame
8. Value Pack: {number}[ dollar savings] [off regular price]
9. Lightweight [only] [#] ounces
10. Mosquito [Repellent] [Defense] [Zone]
11. [This package] [Package] contains
12. [#] hour pack includes [#] butane cartridges and [#] mats



13. Other [Thermacell®] products



## {Repellency}

14. Repels mosquitoes that may carry {list one or more listed diseases} {may add virus or viruses after as grammatically appropriate} [Zika], [West Nile], [Dengue], [Chikungunya], [Yellow Fever], [and] [Eastern Equine Encephalitis]
15. [#] [size] Batteries [included] [not included] [sold separately] [required for light] [required for ZoneCheck Monitor] [required for Zone indicator]
16. [Each] [butane] cartridge lasts a maximum of 12 hours
17. Each mat lasts a maximum of [4][12] hours
18. Provides 15 ft x 15 ft area of mosquito repellency [, the size of an average deck [or patio]]
19. Repels mosquitoes
20. [Provides] 15 x 15 ft [Zone [of] Mosquito Protection] [Mosquito Protection Zone].

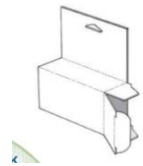


**{Marketing Statements}**

21. Focus on the fun, not the mosquitoes

**{Refill Statements (4 hour mats)}**

22. Can be used in any Thermacell Mosquito Repellent product[s]  
 23. Refills Available  
 24. Thermacell® refills may be used in [other] [all] [any] [these] Thermacell® Mosquito Repellent products  
 25. [#] mosquito repellent mats [provide] [=] [work for a total of] [#] hours  
 26. [#] hours mosquito protection. [#] mosquito repellent mats [lasting] 4 hours each *{ie 48 hours mosquito protection. 12 mosquito repellent mats lasting 4 hours each}*  
 27. [#] mosquito repellent mats [lasting] [#] hours each, [#] hours total mosquito protection. *{ie: 12 mosquito repellent mats lasting 4 hours each, 48 hours mosquito protection.}* *{this claim is the same math equation as #26, but reversed. We need both versions of this statement because a hanging box with header card (see image) would not allow the statement to be clearly read as written on #26. If we write it reversed the message it works}*  
 28. Mats only. [Butane Cartridges no included.]

**{Max Life Mat Marketing Statements (12 hour mat)}**

29. [#] hours total mosquito protection. [#] mosquito repellent mats [lasting] 12 hours each *{ie 48 hours mosquito protection. 12 mosquito repellent mats lasting 4 hours each}*  
 30. [Max Life] [12-hr Mat lasts 3x as long as the 4 hour mat]  
 31. 12 hour Zone of Mosquito Protection lasts all [night] [day] long  
 32. 1:1 mat to cartridge ratio  
 33. MaxLife [Refills] provide(s) 12 hours of mosquito protection  
 34. Zone [of] Mosquito Protection [Mosquito Protection Zone] lasts up to 12 hours

**{Warranty}**

35. [100%] [Money –Back] [Satisfaction] Guarantee [Guaranteed]  
 36. Thermacell makes repellent products that protect people from mosquitoes.  
 37. If Thermacell does not perform to your satisfaction, you may return it [to us] for repair, replacement or [full] refund

**{Guarantee}**

38. [Our] [Thermacell] products are 100% [satisfaction] guaranteed. Have been since *{date}*. If you aren't satisfied, let us know. We'll make it right.

**{How Thermacell® Mosquito Repellents Work}**

39. Provides 15' x 15' Zone [of] Mosquito Protection [mosquito protection zone] [, the size of an average deck]  
 40. The prime symbol (') [represents] [=] feet [ft].<sup>4</sup>  
 41. Heat activated mat releases repellent into the air creating a 15' x 15' Mosquito Protection Zone [Zone [of] Mosquito Protection]

***{Where Product is Used}***

42. Great for campgrounds  
 43. Ideal for use while on decks, patios and backyards.

<sup>4</sup> {NOTE TO REVIEWER: The definition for the prime symbol ('): The prime symbol (') [represents] [=] feet [ft]. will be present in the immediate vicinity (same panel/section) whenever the symbol is used to represent "feet" or "ft."}



44. *{brand name}* Ideal for *{areas product can be used, not all products will list the same items from this list}*  
 Backyard Camping Hunting Basecamp DIY Fishing Patio Deck Spectator Sports Swimming Beaches  
 Parties Gardening Outdoor Entertaining Campsites Docks

**{For Units with LED Light (Lantern, Torch, Post Cap) – Functional statements}**

45. Flickering light  
 46. [Dual use:] Repels mosquitoes and provides [bright] [ambient] [flickering] light  
 47. [Lantern] [Torch] LEDs provide [bright] light with no open flame  
 48. [Lantern] [Torch] Light + Mosquito repellent  
 49. [Torch] [Lantern] [LEDs] provide(s) flameless, [flickering] [ambient] [bright] light [with the touch of a button]  
 50. Flameless Light  
 51. [#] [hours][hr][s][=][long][LED][run time][on [high][low][setting] *{this may appear as a chart see below, this claim indicates how long the light will run under battery power, significant for camping }*{Lumens chart example - numbers will change for different lanterns. This is of value to camping audiences who want to know how long the light batteries will last and how bright the light is}

	Lumens	LED Runtime
High Setting	300	50 <sub>hr</sub>
Low Setting	55	300 <sub>hr</sub>

52. [#] ft [=] [beam distance *{this claim indicates the strength of the beam of light, significant for camping}*]  
 53. Do not mix old and new batteries. Do not mix alkaline, standard or rechargeable batteries.  
 54. [#] Light Settings: [high, medium, low and SOS strobe]  
 55. Battery Power indicator shows remaining battery life [Green [ indicates] [=] adequate power, yellow [indicates] [=] power is getting low, red [indicates] [=] change battery soon]  
 56. Water [weather] resistant [light]  
 57. Durable [rubber] [and] [ABS] construction  
 58. Impact resistant [construction] [material]  
 59. [Built in] [recessed] hook on lantern base

**{For Units with LED Light (Lantern, Torch, Post Cap) – Marketing Statements}**

60. Mosquito protection brought to light [for all your outdoor activities]  
 61. The light that doesn't attract mosquitoes

**{Torch}**

62. Multi use [product]. [Torch and Tabletop Lantern ] 2 in 1 [product] [Torch]  
 63. Multi-use product can be used as a torch in your yard or as a lantern on your deck  
 64. 1 [Tabletop] Torch, 2 Uses  
 65. [Each [every] [Thermacell [Backyard]] Torch comes with [a] protective [safety] cover [cap].] The cover insures product is shut off and protects torch from rain, dirt and debris.  
 66. [#] LED Torch(s) with tabletop stand and protective [safety] cover [cap]  
 67. When fully assembled, torch [with [metal] pole is [over] [#] feet.  
 68. Total pole length is [#] [inches]  
 69. [#] Pole pieces – Total pole length is [#] [inches] [feet]  
 70. [Ideal for use in] [Ideal uses] :





71. Additional graphics and/or symbols (and other device color and configuration variations):





{Promotional item language (when appliances, torches or lanterns is /are used as promotional items, series or line of products)}

- 74. Realtree Xtra Green
- 75. Redhead Logo
- 76. Backyard [Outdoor][Garden(ing)][Camp(ing)][Hunting] Series
- 77. True Timber HTC Green logo

#### {Product Features}

- 78. Rubber over mold base [prevents sliding] [protects the lantern]
- 79. Rubber Armored [body]
- 80. Durable rubber grip and impact resistant construction
- 81. Integrated accessory ports on the back of the {marketing product name} make accessory attachment easy
- 82. mosquito repellent works independent of light
- 83. Lantern separates into mosquito repellent and light
- 84. [carabineer style] base hook
- 85. Flickering or steady [LED] [light]
- 86. [optional] table top stand
- 87. protective [storage] cover
- 88. [ZoneCheck™] Indicator [LED][Monitor] shows [Marketing product name] is [working] [activated]
- 89. Compact design
- 90. Compatible with all major brands of camping [fuel][gas] canisters (sold separately).
- 91. Cover [conveniently] stores under [Marketing product name] while in use.
- 92. Includes [all-season] [weather-resistant] cover
- 93. Insulated piezo igniter for a quieter ignition
- 94. [Contemporary][color options] [designed] [to] fit[s] in any décor
- 95. Travel bag
- 96. Redesigned Grill
- 97. [#] mm [tall] x [#] mm [wide] [#] mm [deep] *{these are the dimensions of the device, if size is important to the consumer}*
- 98. Mosquito repellent without spray
- 99. Integrated Rail System
- 100. Accessory attachment ports integrated on the back of the [marketing product name] make accessory attachment seamless and easy.
- 101. Fuel system provides more convenience. Install up to 4 Thermacell fuel cartridges for 48 hours of run time
- 102. ZoneCheck technology; A subtle pulsing LED indicates [Zone [of] Mosquito Protection] [Mosquito Protection zone] status
- 103. Made from premium materials to provide weather and impact resistance
- 104. Twists on and off for ultimate simplicity
- 105. Cover (included) protects the mosquito repeller from the elements when not in use

#### *{The Packaging and instruction booklet will 'talk to the consumer' more than we currently do:}*

- 106. Welcome to the Thermacell Family
- 107. Don't forget to [pack] [take] your [Thermacell] [marketing product name][along]
- 108. More [fun][adventure][experience], less mosquitos
- 109. Essential gear for adventure
- 110. Silent
- 111. Be invisible – No game-spooking odor *{used in hunting context (market), where scent plays a critical role}*
- 112. Live Life Outdoors



*{ZoneCheck Monitor Chart}*

113. [{marketing reference}] ZoneCheck [Monitor] Guide
114. [[Fast] [Pulse] [Amber] [Blue] [=] {marketing reference} [is turned on and] [Mosquito Protection] Zone is being created]
115. [Slow] [Pulse] [Solid] [Amber] [Blue] [=] the [zone [of] mosquito protection] [mosquito protection zone] is active
116. [Fast] [Steady] [Pulse [yellow][amber][red][white][blue] {color} [=] [[Marketing product name] unable to reach operating temperature required.][something needs [a little TLC] [attention]]. [See Troubleshooting Tips]
117. [No light [=] appliance is OFF or the indicator batteries have run out.]
118. ZoneCheck [Monitor] [light] [tells] [shows] [you] [it's] [marketing name] [is] working] [on] [activated]
119. The Thermacell {Marketing Product Name} unique Zone Indicator communicates with you and shows the [Zone [of] Mosquito Protection] [Mosquito Protection Zone] is working.
120. Blue = the [Zone [of] Mosquito Protection] [Mosquito Protection Zone] is active
121. SystemCheck™ [LED] Technology Monitors [Marketing product name] performance
122. Install [Accepts] up to 4 Thermacell fuel cartridges for 48 hours of run time.
123. Twists On and Off for ultimate simplicity
124. *{May be printed on the Backpacker travel bag or on a tag inside}*
  - a. Backpacker [Appliance]
  - b. See original leaflet for detailed directions
  - c. Attach fuel canister
  - d. Insert mosquito repellent mat
  - e. Flip switch on
  - f. Pinch start tab

*{Fuel Source}*

1. [Fuel efficient] [Uses only # g/hr of fuel]
2. [#] oz Canister [=] [#] hour(s) run time
3. Fuel canister sold separately

*{Refill statements}*

4. *{marketing descriptor to be determined ie: Summer Pack, Weekend Pack, Camp Pack}* Pack [# total hours of mosquito protection [contains] [#] [hour mats] [and ] [#] 12 hour fuel cartridge(s)] *{for instance: Weekend Pack 24 hours of mosquito protection. Contains 6 4-hour mats and 2 12-hour fuel cartridges}*
5. *{marketing descriptor for mats}*: Thermacell Mats, Mosquito Repellent Mats, Mosquito Mats, ThermoMats, T-Mats, ZoneMats, [15x15] Zone Mats, T-Zone Mats, Super Zone Mats, X-Zone Mats, Original, *{marketing descriptor to be determined}{this will be used to name the repellent mats to establish better branding}*
6. *{marketing descriptor for cartridges}*: Thermacell Fuel, Thermacell Cartridge, ThermoFuel, T-Fuel, T-Cell, Thermacell PowerCell, T-Pack, FuelPod, PowerPod, Power Cartridge, ] [#] -hour Cartridge *{marketing descriptor to be determined}{this will be used to name the butane cartridge to establish better branding}*
7. [Value Pack] [Bonus Pack] [Mega Pack] [mats =] [#] hours of protection against mosquitoes
8. Thermacell Mosquito Refills [available] in [original] 4 hour [and] [Max Life]12 hour [mat][of protection] [and] [Earth Scent 4 hour ] mosquito repellent mats



**{Promotional}**

9. Limited time [special] [bonus][free] offer
10. [#] Holster [molle bag] [belt clip] [LED light ][tree hanger] [clamp] inside
11. [Original] [4] [Max Life] [12] hour mat(s) [and butane] included [FREE] [Inside]
12. FREE INSIDE

**{Repellency Area}**

13. How does it work?
14. Heat activation creates a [15' x 15'] zone that protects against mosquitoes

**{Marketing Stories/Statements}**

15. *{Backyard}* Mosquitoes can [spoil just about any] outdoor [fun] [activity], whether you are entertaining friends on the deck [or enjoying a good book on your patio] [or working in your backyard]. Thermacell silently repels mosquitoes [for a maximum of [#] hours per mat.] and enables you to live life outdoors.
16. *{Backpacker / camping}* You've waited weeks for this trip. You've hiked miles to get here. Don't let mosquitoes ruin a good time. [[Zone [of] Mosquito Protection] [Mosquito Protection Zone] for your campsite is only a click away.] The [Patented][Patent pending] fuel regulation system ensures only a small amount of your [valuable] fuel supply is utilized – capable of running up to # hours from a #g fuel canister.] [Welcome to the Thermacell [Zone [of] Mosquito Protection] [Mosquito Protection Zone.]
17. *{Hunting}* Be invisible! Movement, sound and scent can spook game. Thermacell creates a 15'x15' zone of protection against mosquitoes so you can stay focused and undetected in the woods. [Thermacell mosquito repellents are durable and come in your favorite camo patterns].
18. *{Refills}* [Be sure to] keep Thermacell refills on hand all season long. [Thermacell Mosquito Repellent Refills come in a variety of packs to fit your lifestyle]. [Thermacell has Mosquito Repellent lanterns, torches or [portable][handheld] mosquito repellents to suit every activity]
19. *{How it works}* Like all Thermacell products, the [marketing product name] creates a 15x15 ft Zone of Protection from mosquitoes. Thermacell fuel cartridges provide an efficient and cordless source of heat that works in combination with Thermacell mosquito repellent mats. When heated, the mats expel allethrin, creating the Zone of Protection against mosquitoes.
20. {marketing names for devices}

Arlington	Garden	MR450	RedHead
Backpacker	Halo	Multi-use Torch	Scout
Backyard	Lexington	MX	series
Bristol	Lookout	Pathfinder	Shield
Cambridge	M [#]	Patio Shield	Trailblazer
Carriage	Max	Realtree [AP] [APG]	True Timber
Concord	MR [#]	[XtraGreen]	Woodland[s] [Camo]

21. Zone Indicator
22. [#] Lumens
23. Bright LED light
24. Single Pack
25. Free Refill
26. [Optimal] [Dependable] performance up to [#] feet of elevation
27. [#] [size] battery for Zone Indicator



28. 48 hour fuel capacity
29. Compatible with Thermacell 4 and 12 hour Mosquito Repellent [Mats] [Refills]
30. Weather-resistant design and cover protect the repeller from the elements when not in use
31. [Fuel] [Butane] cartridge provides the heat that activates the mosquito repellent mat.
32. Thermacell Mosquito Repellent mats contain allethrin. [When heated by the butane cartridge, the allethrin is emitted into the surrounding area].
33. Accepts up to 4 fuel cartridges for 48 hours of fuel runtime