

7/910-2

5-8/2012

1/20



UNITED STATES ENVIRONMENTAL PROTECTION AGENCY
WASHINGTON D C 20460 0001

OFFICE OF CHEMICAL SAFETY
AND POLLUTION PREVENTION

May 8 2012

Mr Timothy H Dickens Ph D
Consultant/Agent for
The Schawbel Corporation
c/o Scientific Coordination Inc
4629 Cherry Valley Drive
Rockville MD 20853 1110

Subject **Amended Labeling, Response to EPA Letter Dated August 9, 2011**
 ThermaCELL® Mosquito Repellent EPA Reg No 71910 2
 Your E Mail Submissions Dated March 2 2012 & May 4 2012

Dear Mr Dickens

The labeling referred to above submitted in connection with registration under the Federal Insecticide Fungicide and Rodenticide Act as amended is acceptable

A copy of your label for this product stamped Accepted is enclosed for your records If you have any questions please contact Mr Carmen J Rodia Jr at (703) 306 0327 or via e mail at Rodia.Carmen@epa.gov

Sincerely yours

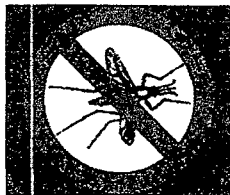
FOR The signature of Richard J Gebken is written in cursive and is preceded by the word "FOR" in capital letters.

Richard J Gebken
Product Manager (10)
Insecticide Branch
Registration Division (7504P)

Enclosure Label stamped Accepted
071910 0 002 D464432

2/20

ThermaCELL[®] Mosquito Repellent



{Select appropriate marketing verbiage and additional graphics and/or symbols from Marketing Text section}

Active Ingredient

d cis/trans allethrin

21.97%

Other Ingredients

78.03%

Total

100.00%

Keep Out of Reach of Children

CAUTION

See back [side] [bottom] panel for additional precautionary statements

[This Package] Contains

1 [Reusable] Appliance [Lantern]

{Number} Butane [ThermaCELL[®]] Cartridge(s)

Net Contents ____ fl oz [each]

and

{Number} [Insect] Repellent Mat(s)

Net Weight ____ oz each

{Patio/Outdoor lantern } [and {number} {size} Batteries [Batteries Included']]

EPA Reg No 71910 2

EPA Est 71998 THA 1 83226 PHL 1

Manufactured for
The Schawbel Corporation
26 Crosby Drive
Bedford MA 01730
Toll Free 1 8 NO SKEETERS
Email Consumerquestions@thermacell.net

Made and Printed in Italy
Mats Made in Italy
Manufactured in [Thailand] [Philippines]

ACCEPTED
May 8, 2012
Under the Federal Insecticide, Fungicide,
and Rodenticide Act, as amended, for the
pesticide registered under

EPA Reg No 71910-2

Protected by one or more of the following U.S. Patents 5 700 430 7 835 631 B2 D423 071 6 033 212 C1

[] Di notes alternate/optional verbiage

{ } Di notes verbiage not printed on market labeling

3/20

DIRECTIONS FOR USE

It is a violation of Federal law to use this product in a manner inconsistent with its labeling

{1 The following directions will be used when mats are sold with or used in the appliance (ThermaCELL® Mosquito Repellent) }

[Useful Tips] Allow 10 to 30 minutes depending upon the size of the area for product to take effect. This product works well in outdoor areas where there is minimal air movement such as decks, unenclosed porches, patios, and yards. Use one appliance per each 225 square feet (an area 15 x 15) or 15 feet in diameter. **Use Restrictions** Only for outdoor use as an insect repellent. Do not use indoors, in tents or in any enclosed area. Do not insert anything other than ThermaCELL® mats into the appliance. Cover or remove all exposed food. Do not leave appliance unattended or use in windy conditions. Do not expose appliance or mats to rain. [Do not attach appliance to your body or clothing.] Place appliance on a flat, stable surface with the grill facing upward. Clean with a damp cloth only when the appliance is cool and inactive. Butane cartridges other than ThermaCELL® cartridges will not work in this appliance.

1 Remove one ThermaCELL® Mosquito Repellent mat from wrapper. One mat lasts a maximum of 4 hours. Mat turns from pale blue to white when active ingredient has been exhausted.

2 Make sure the ON/OFF switch on the appliance is in the OFF position. Insert the mat under the appliance's black grill. To change mats, slide [turn] the ON/OFF switch to OFF and allow the appliance to cool completely. Push the used mat out by inserting a fresh one.

3 Remove the appliance cover and butane cartridge cap.

4 Screw the cartridge into the opening of the appliance. Make sure the cartridge is fully inserted by turning it clockwise until it stops. Replace the appliance cover. One ThermaCELL® butane cartridge lasts a maximum of 12 hours {0.73 fl. oz.} [a maximum of 28 hours {1.58 fl. oz.}]. If your appliance fails to heat, it may be out of fuel. Check the fuel level by holding the appliance vertically and looking at the fuel gauge on the bottom. You can see the amount of butane in the cartridge. Replace if empty.

5 Slide [Turn] the ON/OFF switch to the ON position; the butane gas will begin to flow.

6 Wait approximately 5 to 10 seconds then depress the start button three to five times in rapid succession.

7 To verify the appliance is operating, pick it up and check the lens on the end of the appliance. The light at the end of the appliance glows when the appliance is heating. If the light is not glowing, check to make sure the appliance is ON and cartridge is completely screwed into place, then once again depress the start button three to five times in rapid succession. Check to make sure the light is glowing.

8 Do not touch the grill; it will be hot after a couple of minutes. Some visible vapor will appear during use; this is normal. When finished using the appliance, slide [turn] the ON/OFF switch to the OFF position and allow the appliance to cool completely. Appliance is now ready for storage.



4/20

{2 The following directions will be used when mats are sold with or used in the compact appliance (ThermaCELL® Compact Mosquito Repellent) }

[Useful Tips] Allow 10 to 30 minutes depending upon the size of the area for product to take effect. This product works well in outdoor areas where there is minimal air movement such as [decks] [unenclosed porches] [patios] [yards] and [outdoor campsites]. Use one appliance per each 225 square feet (an area 15 x 15) or 15 feet in diameter. Match or lighter required to operate. **To change mats**, unscrew the cartridge at least one full turn and verify that the light has stopped glowing then allow the appliance to cool completely. Push the used mat out by inserting a fresh one. **Use Restrictions** Only for outdoor use as an insect repellent. Do not use indoors, in tents or in any enclosed area. Do not insert anything other than ThermaCELL® mats into the appliance. Cover or remove all exposed food. Do not leave appliance unattended or use in windy conditions. Do not expose appliance or mats to rain. Do not attach appliance to your body or clothing. Place appliance on a flat, stable surface with the grill facing upward. Clean with a damp cloth only when the appliance is cool and inactive. Butane cartridges other than ThermaCELL® cartridges will not work in this appliance.

One ThermaCELL® butane cartridge lasts a maximum of 12 hours. If your appliance fails to heat, it may be out of fuel. Check the fuel level by holding the cartridge vertically and looking at the fuel level. You can see the amount of butane in the cartridge. Replace if empty.

- 1 Remove one ThermaCELL® Mosquito Repellent mat from wrapper. Insert the mat under the appliance's grill. One mat lasts a maximum of 4 hours. Mat turns from pale blue to white when active ingredient has been exhausted.
- 2 Remove the butane cartridge cap. Screw the cartridge into the opening of the appliance. The butane gas will begin to flow. Make sure the cartridge is fully inserted by turning it clockwise until it stops. Slide the window on the end of the appliance open to expose the ignition port. Hold a lit match or lighter near the ignition port for 5 seconds or until a popping sound is heard. To verify the appliance is operating, pick it up and look into the ignition port. An orange light inside glows when the appliance is heating. If the light is not glowing, check to make sure the cartridge is completely screwed into place, then once again hold a lit match or lighter near the ignition port. Check to make sure the light is glowing. Slide the window closed to cover the ignition port.
- 3 Do not place the appliance so that it is standing on the cartridge. Do not touch the grill; it will be hot after a couple of minutes. Some visible vapor will appear during use; this is normal.
- 4 When finished using the appliance, unscrew the cartridge at least one full turn and verify that the light has stopped glowing. Allow the appliance to cool completely. Appliance is now ready for storage.
{Graphics will be added to final printed labeling}

{3 The following directions will be used when mats are sold with or used in the compact appliance with self start (ThermaCELL® Compact Mosquito Repellent) }

[Useful Tips] Allow 10 to 30 minutes depending upon the size of the area for product to take effect. This product works well in outdoor areas where there is minimal air movement such as decks, unenclosed porches, patios and yards. Use one appliance per each 225 square feet (an area 15 x 15) or 15 feet in diameter. **Use Restrictions** Only for outdoor use as an insect repellent. Do not use indoors, in tents or in any enclosed area. Do not insert anything other than ThermaCELL® mats into the appliance. Cover or remove all exposed food. Do not leave appliance unattended or use in windy conditions. Do not expose appliance or mats to rain. Do not attach appliance to your body or clothing. Place appliance on a flat, stable surface with the grill facing upward. Clean with a damp cloth only when the appliance is cool and inactive. Butane cartridges other than ThermaCELL® cartridges will not work in this appliance.

To change mats, unscrew the cartridge at least one full turn and verify that the light has stopped glowing then allow the appliance to cool completely. Push the used mat out by inserting a fresh one. One ThermaCELL® butane cartridge lasts a maximum of 12 hours. If your appliance fails to heat, it may be out of fuel. Check the fuel

5/20

level by holding the cartridge vertically and looking at the fuel level. You can see the amount of butane in the cartridge. Replace if empty.

1. Remove one ThermaCELL[®] Mosquito Repellent mat from wrapper. Insert the mat under the appliance's grill. One mat lasts a maximum of 4 hours. Mat turns from pale blue to white when active ingredient has been exhausted.
2. Remove the butane cartridge cap. Screw the cartridge into the opening of the appliance; the butane gas will begin to flow. Make sure the cartridge is fully inserted by turning it clockwise until it stops.
3. Slide the window on the end of the appliance open to expose the ignition port. Hold a lit match or lighter near the ignition port for 5 seconds or until a popping sound is heard.
4. To verify the appliance is operating, pick it up and look into the ignition port. An orange light inside glows when the appliance is heating. If the light is not glowing, check to make sure the cartridge is completely screwed into place, then once again hold a lit match or lighter near the ignition port. Check to make sure the light is glowing. Slide the window closed to cover the ignition port.
5. Do not place the appliance so that it is standing on the cartridge. Do not touch the grill; it will be hot after a couple of minutes. Some visible vapor will appear during use; this is normal.
6. When finished using the appliance, unscrew the cartridge at least one full turn and verify that the light has stopped glowing. Allow the appliance to cool completely. Appliance is now ready for storage.



{4 The following directions will be used when mats are sold with or used in the lantern (ThermaCELL[®] Mosquito Repellent Lantern) }

Useful Tips] Allow 10 to 30 minutes, depending upon the size of the area, for product to take effect. This product works well in outdoor areas where there is minimal air movement, such as decks, unenclosed porches, patios, and yards. Product may be used for outdoor camping. Use one lantern per each 225 square feet (an area 15 x 15) or 15 ft diameter. Lantern provides light and repels mosquitoes, [biting] black flies, flying insects, and bugs. Batteries power the light; heat from the ThermaCELL cartridge activates the repellent mat and provides mosquito repellency for up to 4 hours. **Use Restrictions** Only for outdoor use as an insect repellent. Do not use indoors, in tents, or in any enclosed area. Do not insert anything other than ThermaCELL[®] mats into the lantern. Cover or remove all exposed food. Do not leave lantern unattended or use in windy conditions. Do not expose lanterns or mats to rain. Place lantern on a flat, stable surface with the grill facing upward. Clean with a damp cloth only when the lantern is cool and inactive. Butane cartridges other than ThermaCELL[®] cartridges will not work in this lantern.

To Use the Light

1. Remove battery cover on the bottom of the lantern. Install [#] [AA] [AAA] size batteries [(included)] [(not included)]. Replace battery cover. The batteries power [#] LED lights and will provide lantern light for a maximum of [#] hours.
2. To turn Lantern light on, push [slide] the black [switch][button][knob] on the bottom of the lantern to the ON position. If lantern light does not turn on, replace batteries. When finished using the light, push [slide] the [switch][button][knob] to the OFF position.

6/20

To Use the Mosquito Repellent

- 1 Remove one ThermaCELL[®] Mosquito Repellent mat from wrapper. Mats last a maximum of 4 hours. Mat turns from pale blue to white when repellent has been exhausted.



- 2 Insert the mat under the grill at the top of the lantern.



- 3 Remove the butane cartridge cap and screw the cartridge into the opening on the bottom of the lantern by turning the cartridge clockwise until it stops. Make sure the cartridge is fully inserted.



- 4 To activate the mosquito repellent, grasp the lantern collar and rotate [turn] collar to the right until the [indicator] [arrow] [line] points to ON [is in the ON position]. The gas will begin to flow.



- 5 Wait approximately 5 to 10 seconds then rotate lantern collar further to the right until the [indicator] [arrow] [line] points to START [is in the START position]. You should hear a clicking noise.

- 6 To verify that the mosquito repellent is activated, look at the [circular] [oval] view hole located [on the lantern] [collar] [lid] to the right of the START button. An orange light will glow. If there is no orange light, rotate [turn] [indicator] [arrow] [line] back to the ON position and repeat rotation to the START position two to three times in rapid succession.

- 7 If there is still no orange light visible in the view hole, make sure the cartridge is completely screwed into place. Also check the amount of fuel in the cartridge. If cartridge is empty or near empty, remove cartridge and replace with a new ThermaCELL[®] cartridge. Then repeat steps 4-6.



- 8 Do not touch the grill; it will be hot after a few minutes. Some visible vapor will appear during use. This is normal. When finished using the lantern, rotate [turn] the lantern collar to the left until the [indicator] [arrow] [line] [points to OFF] [is in the OFF position]. Allow lantern to cool completely before storing.



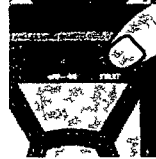
- 9 To replace a used mat, make sure [indicator] [arrow] [line] [points to OFF] [is in the OFF position] and allow lantern grill to cool. Push the used mat out by inserting a fresh mat.



{5 The following directions will be used when mats are sold with or used in the Patio/Outdoor lantern (ThermaCELL[®] Mosquito Repellent Patio Lantern and ThermaCELL[®] Mosquito Repellent Outdoor Camping [Outdoor] Lantern) }

Useful Tips] Allow 10 to 30 minutes depending upon the size of the area for product to take effect. This product works well in outdoor areas where there is minimal air movement such as decks, unenclosed porches, patios and yard. Product may be used for outdoor camping. Use one lantern per each 225 square feet (an area 15 x 15) or 15 in diameter. Lantern provides light and repels mosquitoes [biting] black flies, flying insects and bugs. Batteries power the light; heat from the ThermaCELL[®] cartridge activates the repellent mat and provides mosquito repellency for up to 4 hours. **Use Restrictions** Only for outdoor use as an insect repellent. Do not use indoors, in tents or in any enclosed area. Do not insert anything other than ThermaCELL[®] mats into the lantern. Cover or remove all exposed food. Do not leave lantern unattended or use in windy conditions. Do not expose lanterns or mats to rain. Place lantern on a flat, stable surface with the grill facing upward. Clean with a damp cloth only when the lantern is cool and inactive. Butane cartridges other than ThermaCELL[®] cartridges will not work in this lantern.

- 1 Remove the battery cover on the bottom. Install 4 AA size batteries (included) ([not included]) making sure that the batteries are correctly placed in the indicated directions. Replace battery cover. The batteries will provide lantern light for a maximum of 200 hours on the LOW setting and 150 hours on the HIGH setting. [Replacement alkaline batteries will provide lantern light for a maximum of {number} hours. [{number}] hours on the LOW setting and {number} hours on the HIGH setting.]
- 2 Remove one ThermaCELL[®] mat from wrapper. Mats last a maximum of 4 hours. Mat turns from pale blue to white when repellent has been exhausted.
- 3 Make sure the ON/OFF button is in the OFF position. Insert the mat under the grill at the top of the lantern.
- 4 Remove top of lantern and globe from base by squeezing the latch tabs and lifting out the top of lantern until it is fully removed from the base.
- 5 Remove the butane cartridge cap. Screw the cartridge into the center of the lantern globe. Make sure the cartridge is fully inserted by turning it clockwise until it stops. Replace lantern globe on base. One ThermaCELL[®] butane cartridge lasts a maximum of 12 hours.
- 6 To turn on lantern light, push the black switch located on the base of the lantern. Push the switch to LO for low light, HI for high light and OFF to turn off the light. If lantern light does not turn on, replace batteries.
- 7 The lantern may be used as a mosquito repellent with or without the light being on. However, for the lantern to repel mosquitoes and flying insects, the mosquito repellent must be activated. To activate the mosquito repellent, slide [turn] the ON/OFF button to the ON position. The gas will begin to flow.
- 8 Wait approximately 5 to 10 seconds and then depress the START button three to five times in rapid succession.
- 9 To verify that the mosquito repellent is activated, look at the circular view hole located at the top of the lantern. An orange light will glow. If there is no orange light, check to make sure the lantern is ON and the cartridge is completely screwed into place. Also check the fuel level in the cartridge. If the fuel level in the cartridge is empty or near



8/20

empty, remove cartridge and replace with a new ThermaCELL[®] cartridge. Then once again turn the lantern ON and depress the start button three to five times in rapid succession. Check again to make sure the orange light is glowing.

- 10 Do not touch the grill. It will be hot after a few minutes. Some visible vapor will appear during use. This is normal. When finished using the lantern, slide [turn] the ON/OFF button to the OFF position. If using the light, push the light switch to OFF to extinguish the lantern light. Allow lantern to cool completely. Lantern is now ready for storage.
- 11 To replace a used mat, turn off lantern and allow to cool completely. Push the used mat out by inserting a fresh mat.



{6 The following directions will be used when mats are sold with or used in the mini lantern (ThermaCELL[®] Mini Mosquito Repellent Lantern) }

Useful Tips] Allow 10 to 30 minutes, depending upon the size of the area, for product to take effect. This product works well in outdoor areas where there is minimal air movement, such as decks, unenclosed porches, patios, and yards. Product may be used for outdoor camping. Use one lantern per 225 square feet (an area 15 x 15) or 15 feet in diameter. Automatic shut off switch if lantern tips or is lifted. Lantern provides diffused [gentle] light as it repels mosquitoes [biting] black flies, flying insects, and bugs. Provides a maximum of 4 hours repellency per mat. Match or lighter required to operate. Each mat lasts a maximum of 4 hours and each ThermaCELL[®] butane cartridge lasts a maximum of 12 hours. Mat turns from pale blue to white when repellent has been exhausted. Some visible vapor will appear during use; this is normal. **Use Restrictions** Only for outdoor use as an insect repellent. Do not use indoors, in tents, or in any enclosed area. Do not insert anything other than ThermaCELL[®] mats into the lantern. Cover or remove all exposed food. Do not leave lantern unattended or use in windy conditions. Do not expose lantern or mats to rain. Place lantern on a flat, stable surface with the grill facing upward. Clean with a damp cloth only when the lantern is cool and inactive. Butane cartridges other than ThermaCELL[®] cartridges will not work in this lantern.

- 1 Remove one ThermaCELL[®] Mosquito Repellent mat from wrapper.
- 2 Insert the mat under the grill at the top of the lantern.
- 3 Remove the butane cartridge cap and screw cartridge into the opening in the lantern base by turning the cartridge clockwise until it stops. The gas will begin to flow. Make sure the cartridge is fully inserted.
- 4 Flip open the top of the lantern and hold a lit match or lighter near the white tube in the center of the globe. Verify the lantern is operating (lantern will glow), then close the top of the lantern. If the lantern fails to glow, check to make sure the cartridge is fully inserted. Also check the cartridge's fuel level. If the fuel level in the cartridge is empty, replace the cartridge and repeat steps 3 and 4.
- 5 Do not touch the top of the lantern. It will be hot after a couple of minutes. If you have to relight the lantern, make sure it has completely cooled before opening the top.
- 6 To move the lantern while it is operating, pick it up by the base while holding the button on the side of the base with your thumb. This will temporarily prevent the automatic shut off switch from extinguishing the flame when you pick up the lantern.
- 7 When finished using the lantern, unscrew the cartridge at least one full turn and verify that the lantern is no longer glowing. Allow the lantern to completely cool before storing.
- 8 To replace a used mat, turn off lantern by unscrewing the cartridge and allow lantern to cool completely. Push the used mat out by inserting a fresh mat.

{Graphics will be added to final printed labeling}

9/20

{7 The following directions will be used when mats are sold with or used in the mini lantern with self start (ThermaCELL® Mini Mosquito Repellent Lantern) }

Useful Tips] Allow 10 to 30 minutes depending upon the size of the area for product to take effect. This product works well in outdoor areas where there is minimal air movement such as decks, unenclosed porches, patios and yard. Product may be used for outdoor camping. Use one lantern per each 225 square feet (an area 15 x 15) or 15 feet in diameter. Automatic shut off switch if lantern tips or is lifted. Lantern provides diffused [gentle] light as it repels mosquitoes [biting] black flies, flying insects and bugs. Provides a maximum of 4 hours repellency per mat. Each mat lasts a maximum of 4 hours and each ThermaCELL® butane cartridge lasts a maximum of 12 hours. Mat turns from pale blue to white when repellent has been exhausted. Some visible vapor will appear during use this is normal. **Use Restrictions** Only for outdoor use as an insect repellent. Do not use indoors, in tents or in any enclosed area. Do not insert anything other than ThermaCELL® mats into the lantern. Cover or remove all exposed food. Do not leave lantern unattended or use in windy conditions. Do not expose lanterns or mats to rain. Place lantern on a flat, stable surface with the grill facing upward. Clean with a damp cloth only when the lantern is cool and inactive. Butane cartridges other than ThermaCELL® cartridges will not work in this lantern.

- 1 Remove one ThermaCELL® Mosquito Repellent mat from wrapper
- 2 Insert the mat under the grill at the top of the lantern
- 3 Remove the butane cartridge cap and screw cartridge into the opening in the lantern base by turning the cartridge clockwise until it stops. Make sure the cartridge is fully inserted.
- 4 The gas will begin to flow. [Wait approximately 5 to 10 seconds then] depress the start button three to five times in rapid succession.
- 5 Verify the lantern is operating (lantern will glow). If the lantern fails to glow check to make sure the cartridge is fully inserted. Also check the cartridge's fuel level. If the fuel level in the cartridge is empty, replace the cartridge and repeat steps 3 and 4.
- 6 Do not touch the top of the lantern. It will be hot after a couple of minutes. To move the lantern while it is operating, pick it up by the base while holding the button on the side of the base with your thumb. This will temporarily prevent the automatic shut off switch from extinguishing the flame when you pick up the lantern.
- 7 When finished using the lantern, unscrew the cartridge at least one full turn and verify that the lantern is no longer glowing. Allow the lantern to completely cool before storing.
- 8 To replace a used mat, turn off lantern by unscrewing the cartridge at least one full turn and allow lantern to cool completely. Push the used mat out by inserting a fresh mat.

{Graphics will be added to final printed labeling}

{8 The following directions will be used when mats are sold with or used in the mini lantern with self start and on off button (also ThermaCELL® Mini Mosquito Repellent Lantern) }

Useful Tips] Allow 10 to 30 minutes depending upon the size of the area for product to take effect. This product works well in outdoor areas where there is minimal air movement such as decks, unenclosed porches, patios and yard. Product may be used for outdoor camping. Use one lantern per each 225 square feet (an area 15 x 15) or 15 feet in diameter. Automatic shut off switch if lantern tips or is lifted. Lantern provides diffused [gentle] light as it repels mosquitoes [biting] black flies, flying insects and bugs. Provides a maximum of 4 hours repellency per mat. Each mat lasts a maximum of 4 hours and each ThermaCELL® butane cartridge lasts a maximum of 12 hours. Mat turns from pale blue to white when repellent has been exhausted. Some visible vapor will appear during use this is normal. **Use Restrictions** Only for outdoor use as an insect repellent. Do not use indoors, in tents or in any enclosed area. Do not insert anything other than ThermaCELL® mats into the lantern. Cover or remove all exposed food. Do not leave lantern unattended or use in windy conditions. Do not expose lanterns or mats to rain. Place lantern on a flat, stable surface with the grill facing upward. Press the on off button to the OFF [out] position when not in use. Clean with a damp cloth only when the lantern is cool and inactive. Butane cartridges other than ThermaCELL® cartridges will not work in this lantern.

10/20

- 1 Remove one ThermaCELL[®] Mosquito Repellent mat from wrapper
 - 2 Make sure the on off button is in the OFF [(out)] position. Insert the mat under the grill at the top of the lantern.
 - 3 Remove the butane cartridge cap and screw cartridge into the opening in the lantern base by turning the cartridge clockwise until it stops. Make sure the cartridge is fully inserted.
 - 4 Push [turn] the on off button to the ON [(in)] position. The gas will begin to flow.
 - 5 Wait approximately 5 to 10 seconds then depress the START button three to five times in rapid succession.
 - 6 Verify the lantern is operating (lantern will glow). If the lantern fails to glow check to make sure that the on off button is in the ON [(in)] position and the cartridge is fully inserted. Also check the cartridge's fuel level. If the fuel level in the cartridge is empty turn off the lantern, replace the cartridge and repeat steps 3 through 6.
 - 7 Do not touch the top of the lantern. It will be hot after a couple of minutes. To move the lantern while it is operating pick it up by the base while holding the button on the side of the base with your thumb. This will temporarily prevent the automatic shut off switch from extinguishing the flame when you pick up the lantern.
 - 8 When finished using the lantern, press [turn] the on off button to the OFF [(out)] position and verify that the lantern is no longer glowing. Allow the lantern to completely cool before storing.
 - 9 To replace a used mat, turn off lantern by pressing [turning] the on off button to the OFF [(out)] position and allow lantern to cool completely. Push the used mat out by inserting a fresh mat.
- {Graphics will be added to final printed labeling}

Storage and Disposal

Do not contaminate water, food or feed by storage or disposal.

Storage Store unused mats in original box in a cool, dry place inaccessible to children and pets. Store appliance [lantern] and butane cartridges in original box in a cool, dry place away from sources of heat.

Disposal Non-refillable container; do not refill or reuse this container. **If cartridge is empty or for used mats** Do not reuse empty packaging, envelopes [wrappers] or cartridges. Do not puncture or incinerate empty cartridges. Place in trash or offer for recycling if available. **If cartridge is partly filled or for unused mats** Call your local solid waste agency for disposal instructions. Never place unused mats down any indoor or outdoor drain. **For unwanted appliance [lantern]** Place in trash or offer for recycling if available.

Batch Code [Lot Number] _____

PRECAUTIONARY STATEMENTS

Hazards to Humans & Domestic Animals

CAUTION Harmful if inhaled. Do not breathe vapors. Remove and wash contaminated clothing before reuse.

First Aid

| | |
|--|---|
| If Inhaled | <ul style="list-style-type: none">• Move person to fresh air.• If person is not breathing, call 911 or an ambulance, then give artificial respiration, preferably by mouth-to-mouth, if possible.• Call a poison control center or doctor for further treatment advice. |
| Have the product container or label with you when calling a poison control center or doctor or going for treatment. For additional information on this pesticide product (including health concerns, medical emergencies or pesticide incidents) you may call 1-800-xxx-xxxx Monday through Friday 8:30 AM to 4:30 PM EST. After 4:30 PM, call your poison control center. | |

{Note: The first aid statements grid format will be used if market label space permits; otherwise a paragraph format will be used.}

Physical and Chemical Hazards

Extremely flammable. Contents under pressure. Keep away from fire, sparks and heated surfaces. Do not puncture or incinerate butane container. Exposure to temperatures above 130°F may cause bursting.

11/20

Environmental Hazards

This product is toxic to fish, shrimp, and aquatic invertebrates. Do not apply directly to water. Do not contaminate water when cleaning equipment or disposing of equipment washwater or rinsate. Drift may be hazardous to aquatic organisms in water adjacent to treated areas.

Guarantee Appliance [Lantern] is guaranteed to last {number} year[s] from date of purchase. If [the] appliance [lantern] fails to perform to your satisfaction, send the appliance [lantern] and receipt to {Company Name} for a full refund of purchase price or repair or replacement.

Warranty and Disclaimers Seller will not be held responsible for damage, injury, or poor performance caused by use of other butane cartridges or repellent mats. Seller is not responsible for damage caused by using this butane cartridge in other butane products.

ThermaCELL[®] is a Registered Trademark of the Schawbel Corporation.

12/20

{Mat Label}

ThermaCELL® Mosquito Repellent Mat**Active Ingredient**

d cis/trans allethrin

21.97%

Other Ingredients

78.03%

Total

100.00%

Keep Out of Reach of Children**CAUTION****See outer carton for additional precautionary statements
and Directions for Use****Net Weight ____ oz****EPA Reg No 71910 2****EPA Est 43917 ITA 1****Manufactured for****The Schawbel Corporation**

26 Crosby Drive Bedford MA 01730

Made [and Printed] in Italy

{ThermaCELL® Butane Cartridge Labeling}

ThermaCELL® Butane Cartridge**Keep Out of Reach of Children****CAUTION****Physical and Chemical Hazards**

Extremely flammable. Contents under pressure. Keep away from fire, sparks and heated surfaces. Do not puncture, break or incinerate the butane container even after use. Exposure to temperatures above 130°F may cause bursting. Protect the butane cartridge from sunlight. Use only with ThermaCELL® products.

See box for additional precautionary statements

Net Contents ____ fl oz

The Schawbel Corporation

26 Crosby Drive Bedford MA 01730

[ThermaCELL® is a Registered Trademark of the Schawbel Corporation]

13/20

{Appliance Labeling}**{Promotional Item Language (when appliance is used as a promotional item) }**

NWT Logo National Wild Turkey Federation

Team Realtree Logo [America's Most Versatile Camo Pattern]

Realtree Hardwoods Green HD Logo

ThermaCELL® Mosquito Repellent Appliance**ATTENTION HOT SURFACE****Keep Out of Reach of Children****CAUTION**Read **Directions for Use** and **Precautionary Statements** on box prior to use

Only for outdoor use as an insect repellent. Do not use indoors in a tent or any enclosed area. Do not touch the [black] grill while the appliance is in use. [Black] [G] grill is hot while in use. Place on a flat stable surface with the [black] grill facing upward. Do not cover with any material while in use. Do not expose appliance to rain. Butane cartridges and mats other than ThermaCELL® will not work in this appliance.

EPA Reg No 71910 2 EPA Est 71998 THA 1 83226 PHL 1

The Schawbel Corporation

26 Crosby Drive Bedford MA 01730

781 541 6900

U S Patent Nos 5 700 430 D423 071

[ThermaCELL® is a Registered Trademark of the Schawbel Corporation]

{Lamp Labeling }**{Promotional Item Language (when lantern is used as a promotional item) }**

NWT Logo National Wild Turkey Federation

Team Realtree Logo [America's Most Versatile Camo Pattern]

Realtree Hardwoods Green HD Logo

ThermaCELL® Mosquito Repellent Lantern**ATTENTION HOT SURFACE****Keep Out of Reach of Children****CAUTION**Read **Directions for Use** and **Precautionary Statements** on box prior to use

Only for outdoor use as an insect repellent. Do not use indoors in a tent or any enclosed area. Do not touch the grill while in use. Grill is hot while in use. Place on a flat stable surface with the grill facing upward. Do not cover with any material while in use. Do not expose lantern to rain. Butane cartridges and mats other than ThermaCELL® will not work in this lantern.

EPA Reg No 71910 2 EPA Est 71998 THA 1 83226 PHL 1

The Schawbel Corporation

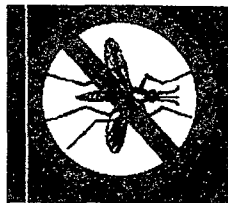
26 Crosby Drive Bedford MA 01730

U S Patent Numbers 6 033 212 C1 5 700 430

[ThermaCELL® is a Registered Trademark of the Schawbel Corporation]

14/20

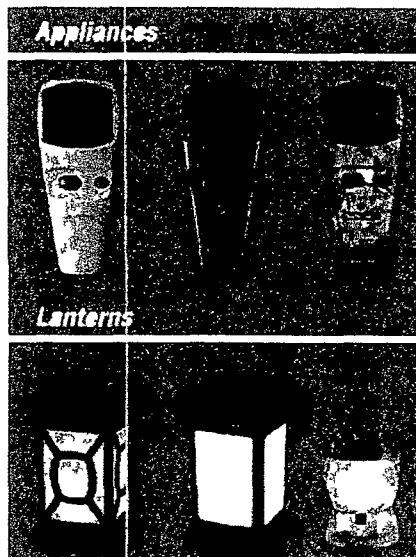
{Refill Labeling}

ThermaCELL[®] Mosquito Repellent**REFILLS**

{Select appropriate marketing verbiage from Marketing Text section}

[Value {or other descriptive term} Packs]

{Number} Refill[s]

May be used in any ThermaCELL[®] Mosquito Repellent product

[For Use in {product name} Appliance Compact Appliance Compact Appliance with Self Start Lantern
 Patio/Outdoor Lanterns Mini Lantern Mini Lantern with Self Start and
 Mini Lantern with Self Start and On Off Button]

Active Ingredient

d cis/trans allethrin

21.97%

Other Ingredients

78.03%

Total

100.00%

Keep Out of Reach of Children**CAUTION**

See back [side] [bottom] panel for additional
 precautionary statements

[This Package] Contains{Number} Butane [ThermaCELL[®]] Cartridge(s)

Net Contents ____ fl oz [each]

and

15/20

{Number} [Insect] Repellent Mat(s)
Net Weight ____ oz each

EPA Reg No 71910 2 EPA Est 71998 THA 1 83226 PHL 1

Manufactured for
The Schawbel Corporation
26 Crosby Drive
Bedford MA 01730
Toll Free 1 8 NO SKEETERS
Email Consumerquestions@thermacell.net
Made and Printed in Italy
Mats Made in Italy
Manufactured in [Thailand] [Philippines]

Protected by one or more of the following U.S. Patents 5 700 430 7 835 631 B2 D423 071 6 033 212 C1

16/20

DIRECTIONS FOR USE

It is a violation of Federal law to use this product in a manner inconsistent with its labeling

Useful Tips Allow 10 to 30 minutes depending upon the size of the area for product to take effect. Each mat lasts a maximum of 4 hours and each cartridge lasts a maximum of 12 {0.73 fl oz} [28 {1.58 fl oz}] hours. Mats turn from pale blue to white when repellent has been exhausted. Use one appliance/lantern for each 225 square feet or 15 feet in diameter. To change mats, make sure appliance/lantern is off and cool, then push used mat out by inserting a fresh one. [Match or lighter required to operate.] **Use Restrictions** Only for outdoor use as an insect repellent. Do not use indoors, in tents or in any enclosed area. Do not insert anything other than ThermaCELL[®] mats into the appliance/lantern. Cover or remove all exposed food. Do not leave appliance/lantern unattended or use in windy conditions. Do not expose appliance/lantern or mats to rain. Do not attach appliance to your body or clothing. Place appliance/lantern on a flat, stable surface with the grill facing upward. Clean with a damp cloth only when the appliance/lantern is cool and inactive. Butane cartridges other than ThermaCELL[®] cartridges will not work in this [these] appliance[s]/lantern[s].

| ThermaCELL [®] Mosquito Repellent and Patio/Outdoor [Appliance[s]]/Lantern[s] | ThermaCELL [®] Mosquito Repellent Lanterns |
|---|--|
| <ol style="list-style-type: none"> Remove one mat from wrapper With appliance or Patio/Outdoor lantern off and completely cool, insert mat under grill Remove appliance cover or Patio/Outdoor lantern top and butane cartridge cap. Screw cartridge into appliance or Patio/Outdoor lantern globe and replace appliance cover [if provided] or Patio/Outdoor lantern top Full Size Appliance and Patio/Outdoor Lantern Move [turn] switch to ON, wait 5 to 10 seconds, then depress start button 3 to 5 times in rapid succession. Compact Appliance Slide open window covering ignition port. Hold lit match or lighter near ignition port. Slide window closed to cover ignition port. Compact Appliance with self start Screw cartridge into appliance, wait 5 to 10 seconds, then click start button 3 to 5 times in rapid succession Verify appliance or Patio/Outdoor lantern is heating. [orange] light will glow. If the light is not glowing, make sure cartridge is completely screwed into place, then repeat step 4. Place on a flat, stable area Full Size Appliance and Patio/Outdoor lantern When finished using, turn switch to OFF. Compact Appliances When finished using, unscrew cartridge Allow to completely cool and then store | <ol style="list-style-type: none"> Remove one mat from wrapper With lantern off and completely cool, insert mat under grill Remove butane cartridge cap and screw into lantern base opening. Place lantern on a flat, stable area Full Size Lantern Rotate [turn] lantern collar to the right until the [indicator] [arrow] [line] points to ON [is in the ON position], wait 5 to 10 seconds, then rotate lantern collar further to the right until the [indicator] [arrow] [line] points to START [is in the START position]. Repeat 3 to 5 times in rapid succession. Mini Lantern Open lantern cover and hold a lit match or lighter near white tube in center. Close lantern cover. Mini Lantern with self start Screw cartridge into lantern base opening [wait 5 to 10 seconds], then depress start button 3 to 5 times in rapid succession. Mini Lantern with Self Start and On Off Button Press [turn] button to ON [(in)] position, wait 5 to 10 seconds, then press START button 3 to 5 times in rapid succession Verify lantern is operating. lantern will glow. If the lantern is not glowing, make sure cartridge is completely screwed into place, then repeat step 4. For full size lantern, orange light will glow in [circular] view hole located on the lantern [collar] [lid] [to the right of the START button] Full Size Lantern When finished using lantern, rotate [turn] lantern collar to the left until the [indicator] [arrow] [line] points to OFF [is in the OFF position]. Mini Lantern When finished |

17/20

using lantern unscrew cartridge **Mini Lantern with Self Start and On Off Button** When finished using lantern press [turn] on off button to OFF [(out)] position

7 Allow lantern to completely cool and then store

Storage and Disposal

Do not contaminate water food or feed by storage or disposal

Storage Store unused mats in original box in a cool dry place inaccessible to children and pets Store unit and butane cartridges in original box in a cool dry place away from sources of heat **Disposal** Non refillable container do not reuse or refill this container **If cartridge is empty or for used mats** Do not reuse empty packaging envelopes [wrappers] or cartridges Do not puncture or incinerate empty cartridges Place in trash or offer for recycling if available **If cartridge is partly filled or for unused mats** Call your local solid waste agency for disposal instructions Never place unused mats down any indoor or outdoor drain

Batch Code [Lot Number] _____

PRECAUTIONARY STATEMENTS

Hazards to Humans & Domestic Animals

CAUTION Harmful if inhaled Do not breathe vapors Remove and wash contaminated clothing before reuse

First Aid

| | |
|-------------------|--|
| If Inhaled | <ul style="list-style-type: none"> • Move person to fresh air • If person is not breathing call 911 or an ambulance then give artificial respiration preferably by mouth to mouth if possible • Call a poison control center or doctor for further treatment advice |
|-------------------|--|

Have the product container or label with you when calling a poison control center or doctor or going for treatment For additional information on this pesticide product (including health concerns medical emergencies or pesticide incidents) you may call 1 800 xxx xxxx Monday through Friday 8 30 AM to 4 30 PM EST After 4 30 PM call your poison control center

{Note The first aid statements grid format will be used if market label space permits otherwise a paragraph format will be used }

Physical and Chemical Hazards

Extremely flammable Contents under pressure Keep away from fire sparks and heated surfaces Do not puncture or incinerate butane container Exposure to temperatures above 130°F may cause bursting

Environmental Hazards

This product is toxic to fish shrimp and aquatic invertebrates Do not apply directly to water Do not contaminate water when cleaning equipment or disposing of equipment washwater or rinsate Drift may be hazardous to aquatic organisms in water adjacent to treated areas

Warranty and Disclaimers Seller will not be held responsible for damage injury or poor performance caused by use of other butane cartridges or repellent mats Seller is not responsible for damage caused by using this butane cartridge in other butane products

{OPTIONAL MARKETING TEXT SYMBOLS & GRAPHICS}

- 1 Additional products made by ThermaCELL[®] include {graphics and names of appliance compact appliance compact appliance with self start lantern Patio/Outdoor lantern mini lantern mini lantern with self start}
- 2 Also works on [repels] black flies
- 3 Automatic shut off switch if lantern tips or is lifted {lantern mini lantern mini lantern with self start and mini lantern with self start and on/off switch}
- 4 Buy one get one free
- 5 Convenient
- 6 Coupon [{ \$ } {number} Rebate[s]] inside
- 7 Easy to use
- 8 Effective
- 9 [No] match or lighter required to operate all except mini lantern and mini appliance}
- 10 Portable
- 11 Powered by ThermaCELL[®]
- 12 Refills [are] available [ThermaCELL] Refills [can be used in] [fit] [any] [all] ThermaCELL Mosquito Repellent product[s]
- 13 [Mosquito] protection you don't spray on
- 14 Silent
- 15 ThermaCELL[®] makes [sells] additional mosquito repellent products including {graphics and names of appliance compact appliance compact appliance with self start lantern Patio/Outdoor lantern mini lantern mini lantern with self start}
- 16 ThermaCELL[®] product line includes {graphics and names of appliance compact appliance compact appliance with self start lantern Patio/Outdoor lantern mini lantern mini lantern with self start }
- 17 ThermaCELL[®] refills may be used in all [any] ThermaCELL[®] Mosquito Repellent products
- 18 Value {or other descriptive term} Pack {number} dollar savings [off regular price]
- 19 Value {or other descriptive term} Pack {number} [free] refills [appliance] [compact appliance] [compact appliance with self start] [lantern] [Patio/Outdoor lantern] [mini lantern] [mini lantern with self start [inside]]}
- 20 Repellency
 - a Batteries last a maximum of 150 hours {Patio/Outdoor lantern}
 - b [Each] cartridge lasts a maximum of 12 hours
 - c Each mat lasts a maximum of 4 hours
 - d Provides 15 ft diameter repellency
 - e Provides 225 sq ft of repellency for a maximum of 4 hours per mat
 - f This box (package)(product) contains {X} mats Each mat provides 4 hours (of) repellency
 - g Repellent lasts a maximum of 4 hours [per mat]
 - h Repels mosquitoes black flies and other flying insects
 - i Repels mosquitoes using a heat activated repellent mat
 - j Repels mosquitoes black flies and other [outdoor] flying insects from an area a maximum of 15 by 15 feet
 - k Repels mosquitoes black flies and other [outdoor] insects in an area as large as an average size deck patio or outdoor campsite (15 feet in diameter or 225 square feet or an area 15 x 15) for up to 4 hours
 - l Repels mosquitoes black flies and other [outdoor] flying insects creating an [area] of repellency

19/20

1 How it [ThermaCELL[®] Mosquito Repellents] Work

- a Heat activated repellent mat repels mosquitoes black flies and other [outdoor] flying insects
- b Heating [Heated] [the] repellent mat releases repellent into the air and provides repellency from mosquitoes black flies and other [outdoor] flying insects
- c Repellent mat releases repellent when heated by the ThermaCELL[®] [power] cartridge
- d ThermaCELL[®] cartridge heats the repellent mat repellent is released creating an [area] of repellency

2 Where Product is Used

- a [ThermaCELL[®] Mosquito Repellent products can be used] For backyard[s] barbecues* outdoor camping outdoor campsites decks gardening hunting [other] social events [gatherings] outdoor dining* [entertaining*] parties patios picnics* spectator sports beaches pools parks [and yards]
- *Cover or remove all exposed food

3 Placement

Place product upwind for maximum repellency

4 Other

- a Effective repellency
- b Refills available wherever Schawbel [ThermaCELL[®]] repellent products are sold
- c The Schawbel Corporation [Schawbel] offers convenient refill kits for use with this product

5 Lantern

- a [Dual use] Repels mosquitoes and provides [bright] [ambient] light
- b If lantern light stops working replace batteries {Patio/Outdoor lantern}
- c [The] [Bright] Lantern light comes from [is created by] [is provided by]{number} [LED][lights] [light bulbs] [Does not] [no] [require] [need][needed] [candles] or [open flame] [to operate]
- d [Lantern] [light] can [operate][be used] [year round]
- e Lantern + Mosquito repellent
- f Use the lantern to repel mosquitoes and other [outdoor] flying insects
- g Outdoor lantern light is 2x brighter than previous models [such as the Lantern [and/or] Patio Lantern]
- h Lantern Dimensions [actual lantern size] x [][mm] high [x] [inches][mm] diameter
- i Lantern weight [weighs] x ounces

6 Mini appliances and lanterns with self starters

- a Easy to light [start] no match or lighter needed
- b Easy start on [button] no match needed to light
- c Quick start feature no match needed to light

7 Mosquitoes black flies bugs outdoor flying insects and biting blackflies can spoil just about any outdoor activity whether you are entertaining guests at a barbecue or working in your backyard Now you can alleviate the annoyance from these insects for a maximum of four hours [per mat] it silently and continuously releases a repellent that repels mosquitoes [biting] black flies outdoor flying insects and bugs [for a maximum of 4 hours per mat] This product efficiently repels and reduces the annoyance of mosquitoes [biting] black flies outdoor flying insects and bugs in an area as large as an average size deck or patio (15 feet in diameter or 225 square feet [an area 15 by 15] for up to 4 hours This product is portable For use in backyards and on patios decks This product is silent

20/20

8 Additional graphics and/or symbols



2.9 Promotional item language (when appliance or lantern is used as promotional items)

- a NWTF Logo National Wild Turkey Federation
- b Team Realtree logo [America's Most Versatile Camo Pattern]
- c Realtree Hardwoods Green HD logo

[] Denotes alternate/optional verbiage

{ } Denotes verbiage not printed on market labeling