

71910-2

08-09-2011

1
21

UNITED STATES ENVIRONMENTAL PROTECTION AGENCY
WASHINGTON, D.C. 20460-0001

OFFICE OF CHEMICAL SAFETY
AND POLLUTION PREVENTION

August 9, 2011

Mr. Timothy H. Dickens, Ph.D.,
Consultant/Agent for
The Schawbel Corporation
c/o Scientific Coordination, Inc.
4629 Cherry Valley Drive
Rockville, MD 20853-1110

**Subject: Amended Labeling; Revised Use Directions & Addition of New Optional Marketing Statements
ThermaCELL® Mosquito Repellent, EPA Reg. No. 71910-2
Your Submission Dated June 29, 2011**

Dear Mr. Dickens:

The labeling referred to above, submitted in connection with registration under the Federal Insecticide, Fungicide and Rodenticide Act, as amended, is acceptable with the following label revision provision(s):

General Comment(s):

1. Delete all text throughout the label marked with "strikethrough."
2. In all areas throughout the subject label, you must either clarify that the listing of "camping" or "campsite" or "campsites" use is not intended for indoor use, or simply delete all of these listings.

Directions for Use page-specific comment(s):

3. On page 4 of 19, within the newly inserted 6th sentence of the "Useful Tips:" subsection, replace the words "... and provides mosquito repellency for an area the size of an average deck or campsite." with the words "... and provides mosquito repellency for up to 4 hours."
4. On page 6 of 19, within the 6th sentence of the "Useful Tips:" subsection, replace the words "... and provides mosquito repellency for an area the size of an average deck." with the words "... and provides mosquito repellency for up to 4 hours."

First Aid Statement page specific comment(s):

5. On page 9 & 16 of 19, you should incorporate the following statement as a 2nd sentence within the existing "HOT LINE NUMBER" subsection: "For additional information on this pesticide product (including health concerns, medical emergencies or pesticide incidents), you may call 1-800-xxx-xxxx twenty-four (24) hours per day, seven (7) days per week."¹

Optional Marketing Statements comment(s), page 17 of 19:

6. Delete optional marketing statement #20.i. since this statement is false and misleading to the consumer. The specific repellency claim (4 hours) for this product is based on efficacy data reviewed for the mats only. Your client cannot multiply the repellency claim by the number of mats in the box.
7. Within optional marketing statement #20.i., revise the words "... campsite [from an average size deck, patio, campsite] for hours." to read "... outdoor campsite (15 feet in diameter or 225 square feet or an area 15' x 15'), not intended for indoor use, for up to 4 hours."

¹ Please note that the "1-800-xxx-xxxx" phone number must be substituted with a valid phone number that is available twenty-four (24) hours per day, seven (7) days per week for answering and responding to any medical emergencies or health concerns.

2
21

Optional Marketing Statements comment(s), page 18 of 19:

8. Within the 3rd sentence of optional marketing statement #27., revise the words "... for a maximum of {number} hours." to read "... for up to 4 hours."

A copy of your label stamped "Accepted with Comments" is enclosed for your records. Please submit two (2) copies of the final printed labeling, incorporating the above changes, before releasing the product for shipment. If these conditions are not complied with, the registration will be subject to cancellation in accordance with section 6(e) of FIFRA. Your release for shipment of the product bearing amended labeling constitutes accepting of these conditions.

If you have any questions regarding this label review, please feel free to contact me at (703) 306-0327 or via e-mail at Rodia.Carmen@epa.gov.

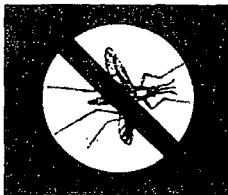
Sincerely yours,



Richard J. Gebken
Product Manager (10)
Insecticide Branch
Registration Division (7504P)

Enclosure: Label stamped "Accepted with Comments"
071910-00002 D452536

ThermaCELL[®] Mosquito Repellent



{Select appropriate marketing verbiage, and additional graphics and/or symbols from "Marketing Text" section}

Active Ingredient:		
d-cis/trans allethrin	21.97%	
Other Ingredients	78.03%	
Total	100.00%	

Keep Out of Reach of Children

CAUTION

See back [side] [bottom] panel for additional precautionary statements.

[This Package] Contains

1 [Reusable] Appliance [Lantern]

{Number} Butane [ThermaCELL[®]] Cartridge(s)

Net Contents 0.73 [1.58] fl. oz. [each]

and

{Number} [Insect] Repellent Mat(s)

Net Weight 0.08 oz. each

{Patio/Outdoor lantern:} [and {number} {size} Batteries [Batteries Included!]]

EPA Reg. No. 71910-2

EPA Est. 71998-THA-1

Manufactured for:

The Schawbel Corporation

26 Crosby Drive

Bedford, MA 01730

Toll Free: 1-8-NO SKEETERS

Email: Consumerquestions@thermacell.net

Made and Printed in Italy

Mats Made in Italy

Manufactured in Thailand [Philippines]

Protected by one or more of the following U.S. Patents: 5,700,430; 7,835,631 B2; D423,071; 6,033,212 C1

[] Denotes alternate/optional verbiage

{ } Denotes verbiage not printed on market labeling

ACCEPTED

With COMMENTS

In EPA Letter Dated:

August 9, 2011

Under the Federal Insecticide, Fungicide
and Rodenticide Act, As amended, for the
pesticide Registered under EPA Reg. No:

71910-2

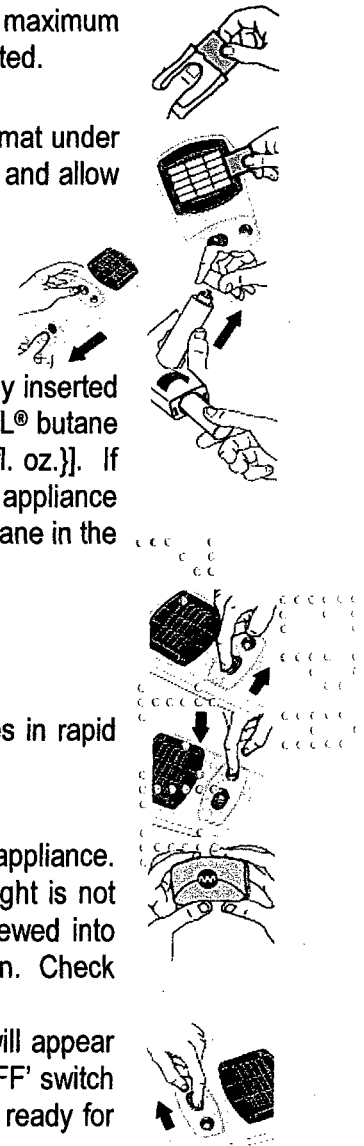
4
21**DIRECTIONS FOR USE**

It is a violation of Federal law to use this product in a manner inconsistent with its labeling.

{1. The following directions will be used when mats are sold with or used in the appliance (ThermaCELL® Mosquito Repellent):}

[Useful Tips:] Allow 10 to 30 minutes, depending upon the size of the area, for product to take effect. This product works well in outdoor areas where there is minimal air movement, such as decks, unenclosed porches, patios and yards. Use one appliance per each 225 square feet (an area 15' x 15') or 15 feet in diameter. **Use Restrictions:** Only for outdoor use as an insect repellent. Do not use indoors, in tents or in any enclosed area. Do not insert anything other than ThermaCELL® mats into the appliance. Cover or remove all exposed food. Do not leave appliance unattended or use in windy conditions. Do not expose appliance or mats to rain. [Do not attach appliance to your body or clothing.] Place appliance on a flat, stable surface with the grill facing upward. Clean with a damp cloth only when the appliance is cool and inactive. Butane cartridges other than ThermaCELL® cartridges will not work in this appliance.

1. Remove one ThermaCELL® Mosquito Repellent mat from wrapper. One mat lasts a maximum of 4 hours. Mat turns from pale blue to white when active ingredient has been exhausted.
2. Make sure the 'ON/OFF' switch on the appliance is in the 'OFF' position. Insert the mat under the appliance's black grill. To change mats, slide [turn] the 'ON/OFF' switch to 'OFF' and allow the appliance to cool completely. Push the used mat out by inserting a fresh one.
3. Remove the appliance cover and butane cartridge cap.
4. Screw the cartridge into the opening of the appliance. Make sure the cartridge is fully inserted by turning it clockwise until it stops. Replace the appliance cover. One ThermaCELL® butane cartridge lasts a maximum of 12 hours {0.73 fl. oz.} [a maximum of 28 hours {1.58 fl. oz.}]. If your appliance fails to heat, it may be out of fuel. Check the fuel level by holding the appliance vertically and looking at the fuel gauge on the bottom. You can see the amount of butane in the cartridge. Replace if empty.
5. Slide [Turn] the 'ON/OFF' switch to the 'ON' position; the butane gas will begin to flow.
6. Wait approximately 5 to 10 seconds then depress the start button three to five times in rapid succession.
7. To verify the appliance is operating, pick it up and check the lens on the end of the appliance. The light at the end of the appliance glows when the appliance is heating. If the light is not glowing, check to make sure the appliance is 'ON' and cartridge is completely screwed into place; then once again depress the start button three to five times in rapid succession. Check to make sure the light is glowing.
8. Do not touch the grill; it will be hot after a couple of minutes. Some visible vapor will appear during use; this is normal. When finished using the appliance, slide [turn] the 'ON/OFF' switch to the 'OFF' position, and allow the appliance to cool completely. Appliance is now ready for storage.



5
21

{2. The following directions will be used when mats are sold with or used in the compact appliance (ThermaCELL® Compact Mosquito Repellent):}

[Useful Tips:] Allow 10 to 30 minutes, depending upon the size of the area, for product to take effect. This product works well in outdoor areas where there is minimal air movement, such as [decks], [unenclosed porches], [patios] and [yards] and [campsites]. Use one appliance per each 225 square feet (an area 15' x 15') or 15 feet in diameter. Match or lighter required to operate. **To change mats**, unscrew the cartridge at least one full turn and verify that the light has stopped glowing then allow the appliance to cool completely. Push the used mat out by inserting a fresh one. **Use Restrictions:** Only for outdoor use as an insect repellent. Do not use indoors, in tents or in any enclosed area. Do not insert anything other than ThermaCELL® mats into the appliance. Cover or remove all exposed food. Do not leave appliance unattended or use in windy conditions. Do not expose appliance or mats to rain. Do not attach appliance to your body or clothing. Place appliance on a flat, stable surface with the grill facing upward. Clean with a damp cloth only when the appliance is cool and inactive. Butane cartridges other than ThermaCELL® cartridges will not work in this appliance.

One ThermaCELL® butane cartridge lasts a maximum of 12 hours. If your appliance fails to heat, it may be out of fuel. Check the fuel level by holding the cartridge vertically and looking at the fuel level. You can see the amount of butane in the cartridge. Replace if empty.

1. Remove one ThermaCELL® Mosquito Repellent mat from wrapper. Insert the mat under the appliance's grill. One mat lasts a maximum of 4 hours. Mat turns from pale blue to white when active ingredient has been exhausted.
2. Remove the butane cartridge cap. Screw the cartridge into the opening of the appliance; the butane gas will begin to flow. Make sure the cartridge is fully inserted by turning it clockwise until it stops. Slide the window on the end of the appliance open to expose the ignition port. Hold a lit match or lighter near the ignition port for 5 seconds or until a popping sound is heard. To verify the appliance is operating, pick it up and look into the ignition port. An orange light inside glows when the appliance is heating. If the light is not glowing, check to make sure the cartridge is completely screwed into place; then once again hold a lit match or lighter near the ignition port. Check to make sure the light is glowing. Slide the window closed to cover the ignition port.
3. Do not place the appliance so that it is standing on the cartridge. Do not touch the grill; it will be hot after a couple of minutes. Some visible vapor will appear during use; this is normal.
4. When finished using the appliance, unscrew the cartridge at least one full turn and verify that the light has stopped glowing; allow the appliance to cool completely. Appliance is now ready for storage.

{Graphics will be added to final printed labeling}

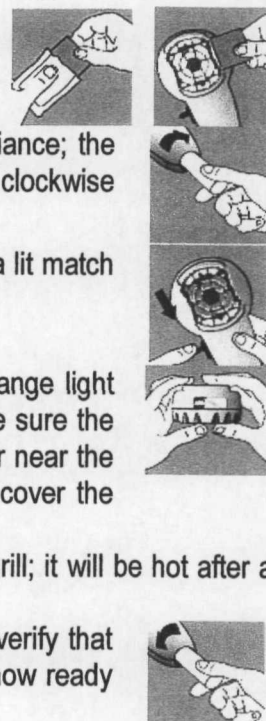
{3. The following directions will be used when mats are sold with or used in the compact appliance with self start (ThermaCELL® Compact Mosquito Repellent):}

Useful Tips:] Allow 10 to 30 minutes, depending upon the size of the area, for product to take effect. This product works well in outdoor areas where there is minimal air movement, such as decks, unenclosed porches, patios and yards. Use one appliance per each 225 square feet (an area 15' x 15') or 15 feet in diameter. **Use Restrictions:** Only for outdoor use as an insect repellent. Do not use indoors, in tents or in any enclosed area. Do not insert anything other than ThermaCELL® mats into the appliance. Cover or remove all exposed food. Do not leave appliance unattended or use in windy conditions. Do not expose appliance or mats to rain. Do not attach appliance to your body or clothing. Place appliance on a flat, stable surface with the grill facing upward. Clean with a damp cloth only when the appliance is cool and inactive. Butane cartridges other than ThermaCELL® cartridges will not work in this appliance.

To change mats, unscrew the cartridge at least one full turn and verify that the light has stopped glowing then allow the appliance to cool completely. Push the used mat out by inserting a fresh one. One ThermaCELL® butane cartridge lasts a maximum of 12 hours. If your appliance fails to heat, it may be out of fuel. Check the fuel

level by holding the cartridge vertically and looking at the fuel level. You can see the amount of butane in the cartridge. Replace if empty.

1. Remove one ThermaCELL® Mosquito Repellent mat from wrapper. Insert the mat under the appliance's grill. One mat lasts a maximum of 4 hours. Mat turns from pale blue to white when active ingredient has been exhausted.
2. Remove the butane cartridge cap. Screw the cartridge into the opening of the appliance; the butane gas will begin to flow. Make sure the cartridge is fully inserted by turning it clockwise until it stops.
3. Slide the window on the end of the appliance open to expose the ignition port. Hold a lit match or lighter near the ignition port for 5 seconds or until a popping sound is heard.
4. To verify the appliance is operating, pick it up and look into the ignition port. An orange light inside glows when the appliance is heating. If the light is not glowing, check to make sure the cartridge is completely screwed into place; then once again hold a lit match or lighter near the ignition port. Check to make sure the light is glowing. Slide the window closed to cover the ignition port.
5. Do not place the appliance so that it is standing on the cartridge. Do not touch the grill; it will be hot after a couple of minutes. Some visible vapor will appear during use; this is normal.
6. When finished using the appliance, unscrew the cartridge at least one full turn and verify that the light has stopped glowing; allow the appliance to cool completely. Appliance is now ready for storage.



{4. The following directions will be used when mats are sold with or used in the lantern (ThermaCELL® Mosquito Repellent Lantern):}

Useful Tips:] Allow 10 to 30 minutes, depending upon the size of the area, for product to take effect. This product works well in outdoor areas where there is minimal air movement, such as decks, unenclosed porches, patios and yards. Product may be used for camping. Use one lantern per each 225 square feet (an area 15' x 15') or 15' in diameter. Lantern provides light and repels mosquitoes, [biting] black flies, flying insects and bugs. Batteries power the light; heat from the ThermaCELL cartridge activates the repellent mat and provides mosquito repellency for an area the size of an average deck or campsite. **Use Restrictions:** Only for outdoor use as an insect repellent. Do not use indoors, in tents or in any enclosed area. Do not insert anything other than ThermaCELL® mats into the lantern. Cover or remove all exposed food. Do not leave lantern unattended or use in windy conditions. Do not expose lanterns or mats to rain. Place lantern on a flat, stable surface with the grill facing upward. Clean with a damp cloth only when the lantern is cool and inactive. Butane cartridges other than ThermaCELL® cartridges will not work in this lantern.

To Use the Light:

1. Remove battery cover on the bottom of the lantern. Install [#] [AA] [AAA] -size batteries [(included)] [(not included)], Replace battery cover. The batteries power [#] LED lights and will provide lantern light for a maximum of [#] hours.
2. To turn Lantern light on, push, [slide] the black [switch][button][knob] on the bottom of the lantern to the "ON" position. If lantern light does not turn on, replace batteries. When finished using the light, push [slide] the [switch][button][knob] to the "OFF"

position.

To Use the Mosquito Repellent:

1. Remove one ThermaCELL® Mosquito Repellent mat from wrapper. Mats last a maximum of 4 hours. Mat turns from pale blue to white when repellent has been exhausted.
2. Insert the mat under the grill at the top of the lantern.
3. Remove the butane cartridge cap and screw the cartridge into the opening on the bottom of the lantern by turning the cartridge clockwise until it stops. Make sure the cartridge is fully inserted.
4. To activate the mosquito repellent, grasp the lantern collar and rotate [turn] collar to the right until the [indicator] [arrow] [line] points to "ON" [is in the "ON" position.] The gas will begin to flow.
5. Wait approximately 5 to 10 seconds then rotate lantern collar further to the right until the [indicator] [arrow] [line] points to "START" [is in the "START" position]. You should hear a clicking noise.
6. To verify that the mosquito repellent is activated look at the [circular] [oval] view hole located [on the lantern][collar] [lid] to the right of the "START" button. An orange light will glow. If there is no orange light, rotate [turn] [indicator] [arrow] [line] back to the "ON" position and repeat rotation to the "START" position two to three times in rapid succession.
7. If there is still no orange light visible in the view hole, make sure the cartridge is completely screwed into place. Also check the amount of fuel in the cartridge. If cartridge is empty or near empty, remove cartridge and replace with a new ThermaCELL® cartridge. Then repeat steps 4-6
8. Do not touch the grill; it will be hot after a few minutes. Some visible vapor will appear during use. This is normal. When finished using the lantern, rotate [turn] the lantern collar to the left until the [indicator] [arrow] [line] [points to "OFF"] [is in the "OFF" position]. Allow lantern to cool completely before storing.
9. To replace a used mat, make sure [indicator] [arrow] [line]] [points to "OFF"] [is in the "OFF" position] and allow lantern grill to cool. Push the used mat out by inserting a fresh mat.

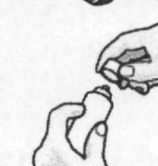


8
21

{5. The following directions will be used when mats are sold with or used in the Patio/Outdoor lantern (ThermaCELL® Mosquito Repellent Patio Lantern and ThermaCELL® Mosquito Repellent Camping [Outdoor] Lantern):}

Useful Tips:] Allow 10 to 30 minutes, depending upon the size of the area, for product to take effect. This product works well in outdoor areas where there is minimal air movement, such as decks, unenclosed porches, patios and yards. Product may be used for camping. Use one lantern per each 225 square feet (an area 15' x 15') or 15' in diameter. Lantern provides light and repels mosquitoes, [biting] black flies, flying insects and bugs. Batteries power the light; heat from the ThermaCELL® cartridge activates the repellent mat and provides mosquito repellency for an area the size of an average deck. **Use Restrictions:** Only for outdoor use as an insect repellent. Do not use indoors, in tents or in any enclosed area. Do not insert anything other than ThermaCELL® mats into the lantern. Cover or remove all exposed food. Do not leave lantern unattended or use in windy conditions. Do not expose lanterns or mats to rain. Place lantern on a flat, stable surface with the grill facing upward. Clean with a damp cloth only when the lantern is cool and inactive. Butane cartridges other than ThermaCELL® cartridges will not work in this lantern.

1. Remove the battery cover on the bottom. Install 4 AA -size batteries (included) ([not included]), making sure that the batteries are correctly placed in the indicated directions. Replace battery cover. The batteries will provide lantern light for a maximum of 200 hours on the LOW setting and 150 hours on the HIGH setting. [Replacement alkaline batteries will provide lantern light for a maximum of {number} hours; [{number} hours on the LOW setting and {number} hours on the HIGH setting].
2. Remove one ThermaCELL® mat from wrapper. Mats last a maximum of 4 hours. Mat turns from pale blue to white when repellent has been exhausted.
3. Make sure the 'ON/OFF' button is in the 'OFF' position. Insert the mat under the grill at the top of the lantern.
4. Remove top of lantern and globe from base by squeezing the latch tabs and lifting out the top of lantern until it is fully removed from the base.
5. Remove the butane cartridge cap. Screw the cartridge into the center of the lantern globe. Make sure the cartridge is fully inserted by turning it clockwise until it stops. Replace lantern globe on base. One ThermaCELL® butane cartridge lasts a maximum of 12 hours.
6. To turn on lantern light, push the black switch located on the base of the lantern. Push the switch to 'LO' for low light, 'HI' for high light and 'OFF' to turn off the light. If lantern light does not turn on, replace batteries.
7. The lantern may be used as a mosquito repellent with or without the light being on. However, for the lantern to repel mosquitoes and flying insects, the mosquito repellent must be activated. To activate the mosquito repellent, slide [turn] the 'ON/OFF' button to the 'ON' position. The gas will begin to flow.
8. Wait approximately 5 to 10 seconds and then depress the 'START' button three to five times in rapid succession.



9
21

9. To verify that the mosquito repellent is activated look at the circular view hole located at the top of the lantern. An orange light will glow. If there is no orange light, check to make sure the lantern is 'ON' and the cartridge is completely screwed into place. Also check the fuel level in the cartridge. If the fuel level in the cartridge is empty or near empty, remove cartridge and replace with a new ThermaCELL® cartridge. Then once again turn the lantern 'ON' and depress the start button three to five times in rapid succession. Check again to make sure the orange light is glowing.



10. Do not touch the grill; it will be hot after a few minutes. Some visible vapor will appear during use. This is normal. When finished using the lantern slide [turn] the 'ON/OFF' button to the 'OFF' position. If using the light, push the light switch to "OFF" to extinguish the lantern light. Allow lantern to cool completely. Lantern is now ready for storage.

11. To replace a used mat, turn off lantern and allow to cool completely. Push the used mat out by inserting a fresh mat.



{6. The following directions will be used when mats are sold with or used in the mini lantern (ThermaCELL® Mini Mosquito Repellent Lantern):}

Useful Tips:] Allow 10 to 30 minutes, depending upon the size of the area, for product to take effect. This product works well in outdoor areas where there is minimal air movement, such as decks, unenclosed porches, patios and yards. Product may be used for camping. Use one lantern per 225 square feet (an area 15' x 15') or 15 feet in diameter. Automatic shut-off switch if lantern tips or is lifted. Lantern provides diffused [gentle] light as it repels mosquitoes, [biting] black flies, flying insects and bugs. Provides a maximum of 4 hours repellency per mat. Match or lighter required to operate. Each mat lasts a maximum of 4 hours and each ThermaCELL® butane cartridge lasts a maximum of 12 hours. Mat turns from pale blue to white when repellent has been exhausted. Some visible vapor will appear during use; this is normal. **Use Restrictions:** Only for outdoor use as an insect repellent. Do not use indoors, in tents or in any enclosed area. Do not insert anything other than ThermaCELL® mats into the lantern. Cover or remove all exposed food. Do not leave lantern unattended or use in windy conditions. Do not expose lantern or mats to rain. Place lantern on a flat, stable surface with the grill facing upward. Clean with a damp cloth only when the lantern is cool and inactive. Butane cartridges other than ThermaCELL® cartridges will not work in this lantern.

1. Remove one ThermaCELL® Mosquito Repellent mat from wrapper.
2. Insert the mat under the grill at the top of the lantern.
3. Remove the butane cartridge cap and screw cartridge into the opening in the lantern base by turning the cartridge clockwise until it stops. The gas will begin to flow. Make sure the cartridge is fully inserted.
4. Flip open the top of the lantern and hold a lit match or lighter near the white tube in the center of the globe. Verify the lantern is operating (lantern will glow), then close the top of the lantern. If the lantern fails to glow check to make sure the cartridge is fully inserted. Also check the cartridge's fuel level. If the fuel level in the cartridge is empty, replace the cartridge and repeat steps 3 and 4.
5. Do not touch the top of the lantern; it will be hot after a couple of minutes. If you have to re-light the lantern, make sure it has completely cooled before opening the top.
6. To move the lantern while it is operating, pick it up by the base while holding the button on the side of the base with your thumb. This will temporarily prevent the automatic shut-off switch from extinguishing the flame when you pick up the lantern.
7. When finished using the lantern, unscrew the cartridge at least one full turn and verify that the lantern is no longer glowing. Allow the lantern to completely cool before storing.

10
27

8. To replace a used mat, turn off lantern by unscrewing the cartridge and allow lantern to cool completely. Push the used mat out by inserting a fresh mat.

{Graphics will be added to final printed labeling}

{7. The following directions will be used when mats are sold with or used in the mini lantern with self start (ThermaCELL® Mini Mosquito Repellent Lantern):}

Useful Tips:] Allow 10 to 30 minutes, depending upon the size of the area, for product to take effect. This product works well in outdoor areas where there is minimal air movement, such as decks, unenclosed porches, patios and yards. Product may be used for camping. Use one lantern per each 225 square feet (an area 15' x 15') or 15 feet in diameter. Automatic shut-off switch if lantern tips or is lifted. Lantern provides diffused [gentle] light as it repels mosquitoes, [biting] black flies, flying insects and bugs. Provides a maximum of 4 hours repellency per mat. Each mat lasts a maximum of 4 hours and each ThermaCELL® butane cartridge lasts a maximum of 12 hours. Mat turns from pale blue to white when repellent has been exhausted. Some visible vapor will appear during use; this is normal. **Use Restrictions:** Only for outdoor use as an insect repellent. Do not use indoors, in tents or in any enclosed area. Do not insert anything other than ThermaCELL® mats into the lantern. Cover or remove all exposed food. Do not leave lantern unattended or use in windy conditions. Do not expose lanterns or mats to rain. Place lantern on a flat, stable surface with the grill facing upward. Clean with a damp cloth only when the lantern is cool and inactive. Butane cartridges other than ThermaCELL® cartridges will not work in this lantern.

1. Remove one ThermaCELL® Mosquito Repellent mat from wrapper.
2. Insert the mat under the grill at the top of the lantern.
3. Remove the butane cartridge cap and screw cartridge into the opening in the lantern base by turning the cartridge clockwise until it stops. Make sure the cartridge is fully inserted.
4. The gas will begin to flow. [Wait approximately 5 to 10 seconds then] depress the start button three to five times in rapid succession.
5. Verify the lantern is operating (lantern will glow). If the lantern fails to glow check to make sure the cartridge is fully inserted. Also check the cartridge's fuel level. If the fuel level in the cartridge is empty, replace the cartridge and repeat steps 3 and 4.
6. Do not touch the top of the lantern; it will be hot after a couple of minutes. To move the lantern while it is operating, pick it up by the base while holding the button on the side of the base with your thumb. This will temporarily prevent the automatic shut-off switch from extinguishing the flame when you pick up the lantern.
7. When finished using the lantern, unscrew the cartridge at least one full turn and verify that the lantern is no longer glowing. Allow the lantern to completely cool before storing.
8. To replace a used mat, turn off lantern by unscrewing the cartridge at least one full turn and allow lantern to cool completely. Push the used mat out by inserting a fresh mat.

{Graphics will be added to final printed labeling}

{8. The following directions will be used when mats are sold with or used in the mini lantern with self start and on-off button (also ThermaCELL® Mini Mosquito Repellent Lantern):}

Useful Tips:] Allow 10 to 30 minutes, depending upon the size of the area, for product to take effect. This product works well in outdoor areas where there is minimal air movement, such as decks, unenclosed porches, patios and yards. Product may be used for camping. Use one lantern per each 225 square feet (an area 15' x 15') or 15 feet in diameter. Automatic shut-off switch if lantern tips or is lifted. Lantern provides diffused [gentle] light as it repels mosquitoes, [biting] black flies, flying insects and bugs. Provides a maximum of 4 hours repellency per mat. Each mat lasts a maximum of 4 hours and each ThermaCELL® butane cartridge lasts a maximum of 12 hours. Mat turns from pale blue to white when repellent has been exhausted. Some visible vapor will appear during use; this is normal. **Use Restrictions:** Only for outdoor use as an insect repellent. Do not use indoors, in tents or in any enclosed area. Do not insert anything other than ThermaCELL® mats into the lantern. Cover or remove all exposed food. Do not leave lantern unattended or use in windy conditions. Do not expose lanterns or mats to rain.

11
21

Place lantern on a flat, stable surface with the grill facing upward. Press the on-off button to the 'OFF' [out] position when not in use. Clean with a damp cloth only when the lantern is cool and inactive. Butane cartridges other than ThermaCELL® cartridges will not work in this lantern.

1. Remove one ThermaCELL® Mosquito Repellent mat from wrapper.
2. Make sure the on-off button is in the "OFF" [(out)] position. Insert the mat under the grill at the top of the lantern.
3. Remove the butane cartridge cap and screw cartridge into the opening in the lantern base by turning the cartridge clockwise until it stops. Make sure the cartridge is fully inserted.
4. Push [turn] the on-off button to the 'ON' [(in)] position; the gas will begin to flow.
5. Wait approximately 5 to 10 seconds then depress the 'START' button three to five times in rapid succession.
6. Verify the lantern is operating (lantern will glow). If the lantern fails to glow check to make sure that the on-off button is in the 'ON' [(in)] position and the cartridge is fully inserted. Also check the cartridge's fuel level. If the fuel level in the cartridge is empty turn off the lantern, replace the cartridge and repeat steps 3 through 6.
7. Do not touch the top of the lantern; it will be hot after a couple of minutes. To move the lantern while it is operating, pick it up by the base while holding the button on the side of the base with your thumb. This will temporarily prevent the automatic shut-off switch from extinguishing the flame when you pick up the lantern.
8. When finished using the lantern, press [turn] the on-off button to the 'OFF' [(out)] position and verify that the lantern is no longer glowing. Allow the lantern to completely cool before storing.
9. To replace a used mat, turn off lantern by pressing [turning] the on-off button to the 'OFF' [(out)] position and allow lantern to cool completely. Push the used mat out by inserting a fresh mat.

{Graphics will be added to final printed labeling}

Storage and Disposal

Do not contaminate water, food or feed by storage or disposal.

Storage: Store unused mats in original box in a cool, dry place inaccessible to children and pets. Store appliance [lantern] and butane cartridges in original box in a cool, dry place away from sources of heat.

Disposal: Non-refillable container; do not refill or reuse this container. **If cartridge is empty or for used mats:** Do not reuse empty packaging, envelopes [wrappers] or cartridges. Do not puncture or incinerate empty cartridges. Place in trash or offer for recycling if available. **If cartridge is partly filled or for unused mats:** Call your local solid waste agency for disposal instructions. Never place unused mats down any indoor or outdoor drain. **For unwanted appliance [lantern]:** Place in trash or offer for recycling if available.

Batch Code [Lot Number]: _____

PRECAUTIONARY STATEMENTS

Hazards to Humans & Domestic Animals

CAUTION: Harmful if inhaled. Do not breathe vapors. Remove and wash contaminated clothing before reuse.

First Aid

If Inhaled:	<ul style="list-style-type: none"> • Move person to fresh air. • If person is not breathing, call 911 or an ambulance, then give artificial respiration, preferably by mouth-to-mouth, if possible. • Call a poison control center or doctor for further treatment advice.
Have the product container or label with you when calling a poison control center or doctor, or going for treatment.	

{Note: The first aid statements' grid format will be used if market label space permits; otherwise a paragraph format will be used.}

12
61**Physical and Chemical Hazards**

Extremely flammable. Contents under pressure. Keep away from fire, sparks and heated surfaces. Do not puncture or incinerate butane container. Exposure to temperatures above 130°F may cause bursting.

Environmental Hazards

This product is toxic to fish, shrimp and aquatic invertebrates. Do not apply directly to water. Do not contaminate water when cleaning equipment or disposing of equipment washwater or rinsate. Drift may be hazardous to aquatic organisms in water adjacent to treated areas.

Guarantee: Appliance [Lantern] is guaranteed to last {number} year[s] from date of purchase. If [the] appliance [lantern] fails to perform to your satisfaction, send the appliance [lantern] and receipt to {Company Name} for a full refund of purchase price or repair or replacement.

Warranty and Disclaimers: Seller will not be held responsible for damage, injury or poor performance caused by use of other butane cartridges or repellent mats. Seller is not responsible for damage caused by using this butane cartridge in other butane products.

ThermaCELL® is a Registered Trademark of the Schawbel Corporation

13
21

{Mat Label}

ThermaCELL® Mosquito Repellent Mat**Active Ingredient:**

d-cis/trans allethrin 21.97%

Other Ingredients 78.03%

Total 100.00%

Keep Out of Reach of Children**CAUTION****See outer carton for additional precautionary statements
and Directions for Use.****Net Weight: 0.08 oz.****EPA Reg. No. 71910-2****EPA Est. 43917-ITA-1****Manufactured for:****The Schawbel Corporation**

26 Crosby Drive Bedford, MA 01730

Made [and Printed] in Italy

{ThermaCELL® Butane Cartridge Labeling}

ThermaCELL® Butane Cartridge**Keep Out of Reach of Children****CAUTION****Physical and Chemical Hazards**

Extremely flammable. Contents under pressure. Keep away from fire, sparks and heated surfaces. Do not puncture, break or incinerate the butane container even after use. Exposure to temperatures above 130°F may cause bursting. Protect the butane cartridge from sunlight. Use only with ThermaCELL® products.

See box for additional precautionary statements.

Net Contents: 0.73 [1.58] fl. oz.

The Schawbel Corporation

26 Crosby Drive Bedford, MA 01730

[ThermaCELL® is a Registered Trademark of the Schawbel Corporation]

14
21**{Appliance Labeling}****{Promotional Item Language (when appliance is used as a promotional item):}**

NWTF Logo National Wild Turkey Federation

Team Realtree Logo [America's Most Versatile Camo Pattern]

Realtree Hardwoods Green HD Logo

ThermaCELL® Mosquito Repellent Appliance**ATTENTION - HOT SURFACE****Keep Out of Reach of Children****CAUTION**Read **Directions for Use** and **Precautionary Statements** on box prior to use.

Only for outdoor use as an insect repellent. Do not use indoors, in a tent or any enclosed area. Do not touch the [black] grill while the appliance is in use. [Black] [G]grill is hot while in use. Place on a flat, stable surface with the [black] grill facing upward. Do not cover with any material while in use. Do not expose appliance to rain. Butane cartridges and mats other than ThermaCELL® will not work in this appliance.

EPA Reg. No. 71910-2 EPA Est. 71998-THA-1, 43917-ITA-1

The Schawbel Corporation

26 Crosby Drive Bedford, MA 01730

781-541-6900

U.S. Patent Nos. 5,700,430; D423,071

[ThermaCELL® is a Registered Trademark of the Schawbel Corporation]

{Lamp Labeling:}**{Promotional Item Language (when lantern is used as a promotional item):}**

NWTF Logo National Wild Turkey Federation

Team Realtree Logo [America's Most Versatile Camo Pattern]

Realtree Hardwoods Green HD Logo

ThermaCELL® Mosquito Repellent Lantern**ATTENTION - HOT SURFACE****Keep Out of Reach of Children****CAUTION**Read **Directions for Use** and **Precautionary Statements** on box prior to use.

Only for outdoor use as an insect repellent. Do not use indoors, in a tent or any enclosed area. Do not touch the grill while in use. Grill is hot while in use. Place on a flat, stable surface with the grill facing upward. Do not cover with any material while in use. Do not expose lantern to rain. Butane cartridges and mats other than ThermaCELL® will not work in this lantern.

EPA Reg. No. 71910-2 EPA Est. 71998-THA-1, 43917-ITA-1

The Schawbel Corporation

26 Crosby Drive Bedford, MA 01730

U.S. Patent Numbers 6,033,212 C1; 5,700,430

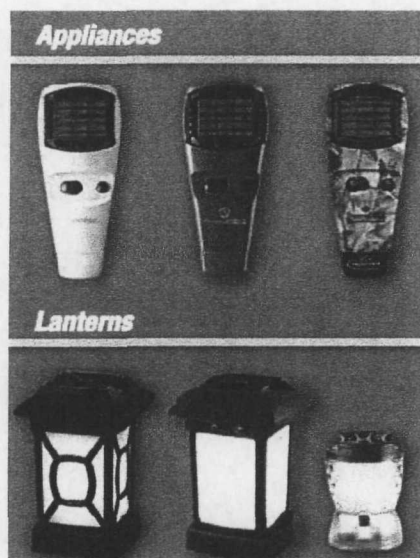
[ThermaCELL® is a Registered Trademark of the Schawbel Corporation]

15
21

{Refill Labeling}

ThermaCELL® Mosquito Repellent**REFILLS**

{Select appropriate marketing verbiage from "Marketing Text" section}

[Value {or other descriptive term} Packs]**{Number} Refill[s]****May be used in any ThermaCELL® Mosquito Repellent product**

[For Use in {product name} Appliance, Compact Appliance, Compact Appliance with Self Start, Lantern, Patio/Outdoor Lanterns, Mini-Lantern, Mini-Lantern with Self Start and Mini Lantern with Self-Start and On-Off Button]

Active Ingredient:

d-cis/trans allethrin 21.97%

Other Ingredients 78.03%

Total 100.00%

Keep Out of Reach of Children**CAUTION**

**See back [side] [bottom] panel for additional
precautionary statements.**

**[This Package] Contains
{Number} Butane [ThermaCELL®] Cartridge(s)
Net Contents 0.73 [1.58] fl. oz. [each]**

and

16
21

{Number} [Insect] Repellent Mat(s)
Net Weight 0.08 oz. each

EPA Reg. No. 71910-2 EPA Est. 71998-THA-1

Manufactured for:
The Schawbel Corporation
26 Crosby Drive
Bedford, MA 01730
Toll Free: 1-8-NO SKEETERS
Email: Consumerquestions@thermacell.net
Made and Printed in Italy
Mats Made in Italy
Manufactured in Philippines

Protected by one or more of the following U.S. Patents: 5,700,430; 7,835,631 B2; D423,071; 6,033,212 C1

DIRECTIONS FOR USE

It is a violation of Federal law to use this product in a manner inconsistent with its labeling.

Useful Tips: Allow 10 to 30 minutes, depending upon the size of the area, for product to take effect. Each mat lasts a maximum of 4 hours and each cartridge lasts a maximum of 12 {0.73 fl. oz.} [28 {1.58 fl. oz.}] hours. Mats turn from pale blue to white when repellent has been exhausted. Use one appliance/lantern for each 225 square feet or 15 feet in diameter. To change mats, make sure appliance/lantern is off and cool, then push used mat out by inserting a fresh one. [Match or lighter required to operate.] **Use Restrictions:** Only for outdoor use as an insect repellent. Do not use indoors, in tents or in any enclosed area. Do not insert anything other than ThermaCELL® mats into the appliance/lantern. Cover or remove all exposed food. Do not leave appliance/lantern unattended or use in windy conditions. Do not expose appliance/lantern or mats to rain. Do not attach appliance to your body or clothing. Place appliance/lantern on a flat, stable surface with the grill facing upward. Clean with a damp cloth only when the appliance/lantern is cool and inactive. Butane cartridges other than ThermaCELL® cartridges will not work in this appliance/lantern.

ThermaCELL® Mosquito Repellent and Patio/Outdoor Lantern	ThermaCELL® Mosquito Repellent Lanterns
<ol style="list-style-type: none"> 1. Remove one mat from wrapper. 2. With appliance or Patio/Outdoor lantern off and completely cool, insert mat under grill. 3. Remove appliance cover or Patio/Outdoor lantern top and butane cartridge cap. Screw cartridge into appliance or Patio/Outdoor lantern globe and replace appliance cover [if provided] or Patio/Outdoor lantern top. 4. Full Size Appliance and Patio/Outdoor lantern: Move [turn] switch to 'ON', wait 5 to 10 seconds then depress start button 3 to 5 times in rapid succession. Compact Appliance: Slide open window covering ignition port. Hold lit match or lighter near ignition port. Slide window closed to cover ignition port. Compact Appliance with self-start: Screw cartridge into appliance, wait 5 to 10 seconds then click start button 3 to 5 times in rapid succession. 5. Verify appliance or Patio/Outdoor lantern is heating; [orange] light will glow. If the light is not glowing, make sure cartridge is completely screwed into place; then repeat step 4. Place on a flat, stable area. 6. Full Size Appliance and Patio/Outdoor lantern: When finished using, turn switch to 'OFF'. Compact Appliances: When finished using, unscrew cartridge. 7. Allow to completely cool and then store. 	<ol style="list-style-type: none"> 1. Remove one mat from wrapper. 2. With lantern off and completely cool, insert mat under grill. 3. Remove butane cartridge cap and screw into lantern base opening. Place lantern on a flat, stable area. 4. Full Size Lantern: Rotate [turn] lantern collar to the right until the [indicator] [arrow] [line] points to "ON" [is in the "ON" position], wait 5 to 10 seconds then rotate lantern collar further to the right until the [indicator] [arrow] [line] points to "START" [is in the "START" position]. Repeat 3 to 5 times in rapid succession. Mini Lantern: Open lantern cover and hold a lit match or lighter near white tube in center. Close lantern cover. Mini Lantern with self-start: Screw cartridge into lantern base opening [wait 5 to 10 seconds] then depress start button 3 to 5 times in rapid succession. Mini Lantern with Self-Start and On-Off Button: Press [turn] button to 'ON' [(in)] position, wait 5 to 10 seconds, then press 'START' button 3 to 5 times in rapid succession. 5. Verify lantern is operating; lantern will glow. If the lantern is not glowing, make sure cartridge is completely screwed into place; then repeat step 4. For full size lantern, orange light will glow in [circular] view hole located on the lantern [collar] [lid] [to the right of the "START" button.] 6. Full Size Lantern: When finished using lantern, rotate [turn] lantern collar to the left until the [indicator] [arrow] [line] [points to "OFF"] [is in the "OFF" position]. Mini Lantern: When finished

18
21

using lantern, unscrew cartridge. **Mini Lantern with Self-Start and On-Off Button:** When finished using lantern, press [turn] on-off button to 'OFF' [(out)] position.

7. Allow lantern to completely cool and then store.

Storage and Disposal

Do not contaminate water, food or feed by storage or disposal.

Storage: Store unused mats in original box in a cool, dry place inaccessible to children and pets. Store unit and butane cartridges in original box in a cool, dry place away from sources of heat. **Disposal:** Non-refillable container; do not reuse or refill this container. **If cartridge is empty or for used mats:** Do not reuse empty packaging, envelopes [wrappers] or cartridges. Do not puncture or incinerate empty cartridges. Place in trash or offer for recycling if available. **If cartridge is partly filled or for unused mats:** Call your local solid waste agency for disposal instructions. Never place unused mats down any indoor or outdoor drain.

Batch Code [Lot Number]: _____

PRECAUTIONARY STATEMENTS

Hazards to Humans & Domestic Animals

CAUTION: Harmful if inhaled. Do not breathe vapors. Remove and wash contaminated clothing before reuse.

First Aid

If Inhaled:	<ul style="list-style-type: none"> • Move person to fresh air. • If person is not breathing, call 911 or an ambulance, then give artificial respiration, preferably by mouth-to-mouth, if possible. • Call a poison control center or doctor for further treatment advice.
Have the product container or label with you when calling a poison control center or doctor, or going for treatment.	

{Note: The first aid statements' grid format will be used if market label space permits; otherwise a paragraph format will be used.}

Physical and Chemical Hazards

Extremely flammable. Contents under pressure. Keep away from fire, sparks and heated surfaces. Do not puncture or incinerate butane container. Exposure to temperatures above 130°F may cause bursting.

Environmental Hazards

This product is toxic to fish, shrimp and aquatic invertebrates. Do not apply directly to water. Do not contaminate water when cleaning equipment or disposing of equipment washwater or rinsate. Drift may be hazardous to aquatic organisms in water adjacent to treated areas.

Warranty and Disclaimers: Seller will not be held responsible for damage, injury or poor performance caused by use of other butane cartridges or repellent mats. Seller is not responsible for damage caused by using this butane cartridge in other butane products.

19
21

{OPTIONAL MARKETING TEXT, SYMBOLS & GRAPHICS}

1. Additional products made by ThermaCELL® include: {graphics and names of appliance, compact appliance, compact appliance with self start, lantern, Patio/Outdoor lantern, mini-lantern, mini-lantern with self start}
2. Also works on [repels] black flies
3. Automatic shut-off switch if lantern tips or is lifted {lantern, mini-lantern, mini-lantern with self-start and mini-lantern with self-start and on/off switch}
4. Buy one get one free
5. Convenient
6. Coupon [{ \$ } {number} Rebate[s]] inside
7. Easy to use
8. Effective
9. [No] match or lighter required to operate {all except mini-lantern and mini-appliance}
10. Portable
11. Powered by ThermaCELL®
12. Refills [are] available. [ThermaCELL] Refills [can be used in] [fit] [any] [all] ThermaCELL Mosquito Repellent product[s]
13. [Mosquito] protection you don't spray on
14. Silent
15. ThermaCELL® makes [sells] additional mosquito repellent products, including {graphics and names of appliance, compact appliance, compact appliance with self start, lantern, Patio/Outdoor lantern, mini-lantern, mini-lantern with self start}
16. ThermaCELL® product line includes {graphics and names of appliance, compact appliance, compact appliance with self start, lantern, Patio/Outdoor lantern, mini-lantern, mini-lantern with self start }
17. ThermaCELL® refills may be used in all [any] ThermaCELL® Mosquito Repellent products
18. Value {or other descriptive term} Pack: {number} dollar savings [off regular price]
19. Value {or other descriptive term} Pack: {number} [free] refills [appliance,] [compact appliance,] [compact appliance with self start,] [lantern,] [Patio/Outdoor lantern,] [mini-lantern,] [mini-lantern with self start [inside]]
20. Repellency
 - a. Batteries last a maximum of 150 hours {Patio/Outdoor lantern}
 - b. [Each] cartridge lasts a maximum of 12 hours
 - c. Each mat lasts a maximum of 4 hours
 - d. Provides 15 ft diameter repellency
 - e. Provides 225 sq ft of repellency for a maximum of 4 hours per mat
 - f. Repellency lasts a maximum of {number} hours {"number" determined by number of mats in box multiplied by 4 hours per mat}
 - g. Repellent lasts a maximum of 4 hours [per mat]
 - h. Repels mosquitoes, black flies and other flying insects
 - ~~i. Repels mosquitoes and black flies for a maximum of {number} hours {"number" determined by number of mats in box multiplied by 4 hours per mat}~~
 - j. Repels mosquitoes using a heat-activated repellent mat
 - k. Repels mosquitoes, black flies and other [outdoor] flying insects from an area a maximum of 15 by 15 feet
 - l. Repels mosquitoes, black flies and other [outdoor] insects in an area as large as an average size deck or patio, campsite [from an average size deck, patio, campsite] for hours
 - m. Repels mosquitoes, black flies and other [outdoor] flying insects creating an [area] of repellency

20
21

21. How it [ThermaCELL® Mosquito Repellents] Work

- a. Heat-activated repellent mat repels mosquitoes, black flies and other [outdoor] flying insects
- b. Heating [Heated] [the] repellent mat releases repellent into the air and provides repellency from mosquitoes, black flies and other [outdoor] flying insects
- c. Repellent mat releases repellent when heated by the ThermaCELL® [power] cartridge
- d. ThermaCELL® cartridge heats the repellent mat; repellent is released creating an [area] of repellency

22. Where Product is Used

- a. [ThermaCELL® Mosquito Repellent products can be used] For backyard[s], barbecues*, camping, campsites, decks, gardening, hunting, [other] social events [gatherings], outdoor dining* [entertaining*], parties, patios, picnics*, spectator sports, beaches, pools, parks [and yards]

*Cover or remove all exposed food.

23. Placement

- a. Place product upwind for maximum repellency

24. Other

- a. Effective repellency
- b. Refills available wherever Schawbel [ThermaCELL®] repellent products are sold
- c. The Schawbel Corporation [Schawbel] offers convenient refill kits for use with this product

25. Lantern

- a. [Dual use:] Repels mosquitoes and provides [bright] [ambient] light
- b. If lantern light stops working, replace batteries {Patio/Outdoor lantern}
- c. [The] [Bright] Lantern light comes from [is created by] {number} Patio/Outdoor [LED][lights] [light bulbs]; [Does not] [no] [require] [need][needed] [candles] or [open flame] [to operate]
- d. [Lantern] [light] can [operate][be used] [year round]
- e. Lantern + Mosquito repellent
- f. Use the lantern to repel mosquitoes and other [outdoor] flying insects
- g. Outdoor lantern light is 2x brighter than previous models [such as the Lantern [and/or] Patio Lantern]
- h. Lantern Dimensions [actual lantern size]: x "[mm] high; [x] [inches][mm] diameter
- i. Lantern weight [weighs]: x ounces

26. Mini-appliances and lanterns with self-starters

- a. Easy to light [start]; no match or lighter needed
- b. Easy start on [button]; no match needed to light
- c. Quick start feature; no match needed to light

27. Mosquitoes, black flies, bugs, outdoor flying insects and biting blackflies can spoil just about any outdoor activity whether you are entertaining guests at a barbecue or working in your backyard. Now you can alleviate the annoyance from these insects for a maximum of four hours [per mat]; it silently and continuously releases a repellent that repels mosquitoes, [biting] black flies, outdoor flying insects and bugs [for a maximum of {number} hours.]. This product efficiently repels and reduces the annoyance of mosquitoes, [biting] black flies, outdoor flying insects and bugs in an area as large as an average-size deck or patio (15 feet in diameter or 225 square feet [an area 15' by 15'] for a maximum of {number} hours. This product is portable. For use in backyards, and on patios, decks. This product is silent.

21
21

28. Additional graphics and/or symbols:



29. Promotional item language (when appliance or lantern is used as promotional items)

- a. NWTF Logo National Wild Turkey Federation
- b. Team Realtree logo [America's Most Versatile Camo Pattern]
- c. Realtree Hardwoods Green HD logo

[] Denotes alternate/optional verbiage

{ } Denotes verbiage not printed on market labeling