

71910-2

02/14/2004

43A 3-3 1/7

Please read instructions on reverse before completing form.

Form Approved. OMB No. 2070-0060.

United States Environmental Protection Agency 1200 Pennsylvania Avenue, N.W. Washington, DC 20460-0001	<input type="checkbox"/> Registration <input type="checkbox"/> Amendment <input checked="" type="checkbox"/> Other	OPP Identifier Number
--	--	-----------------------

Application for Pesticide – Section I

1. Company/Product Number EPA Reg. No. 71910-2	2. EPA Product Manager Linda Arrington	3. Proposed Classification <input checked="" type="checkbox"/> None <input type="checkbox"/> Restricted
4. Company/Product (Name) ThermaCELL® Mosquito Repellent	PM # 10	
5. Name and Address of Applicant (Include ZIP Code) The Schawbel Corporation c/o RegWest Company, LLC 30856 Rocky Road Greeley, CO 80631-9375	6. Expedited Review. In accordance with FIFRA Section 3(c)(3)(b)(i) my product is similar or identical in composition and labeling to: EPA Reg. No. _____ Product Name _____	

☐ Check if this is a new address**Section – II**

<input type="checkbox"/> Amendment – Explain below. <input type="checkbox"/> Resubmission in response to Agency letter dated _____ <input checked="" type="checkbox"/> Notification – Explain below.	NOTIFICATION FEB 14 2004 <input type="checkbox"/> Final printed labels in response to Agency letter dated _____ <input type="checkbox"/> "Me Too" Application. <input type="checkbox"/> Other – Explain below.
--	--

Explanation: See additional page(s) if necessary. (For Section I and Section II.)**Submit additional brand name notification per PR Notice 98-10.****The additional brand name is: ThermaCELL Mosquito Repellent Refills.**

This notification is consistent with the provisions of PR Notice 98-10 and EPA regulations at 40 CFR § 152.46, and no other changes have been made to the labeling or the confidential statement of formula of this product. I understand that it is a violation of 18 U.S.C. Sec. 1001 to willfully make any false statement to the EPA. I further understand that if this notification is not consistent with the terms of PR Notice 98-10 and 40 CFR § 152.46 this product may be in violation of FIFRA and I may be subject to enforcement action and penalties under sections 12 and 14 of FIFRA.

Section – III

1. Material This Product Will Be Packaged In:			
Child Resistant Packaging <input type="checkbox"/> Yes* <input type="checkbox"/> No	Unit Packaging <input type="checkbox"/> Yes <input type="checkbox"/> No	Water Soluble Packaging <input type="checkbox"/> Yes <input type="checkbox"/> No	2. Type of Container <input type="checkbox"/> Metal <input type="checkbox"/> Plastic <input type="checkbox"/> Glass <input type="checkbox"/> Paper <input type="checkbox"/> Other (Specify): _____
*Certification must be submitted		If "Yes" Unit Packaging Wgt.	No. Per Container
		If "Yes" Packaging Wgt.	No. Per Container
3. Location of Net Contents Information <input type="checkbox"/> Label <input type="checkbox"/> Container		4. Size(s) Retail Container	
		5. Location of Label Directions <input type="checkbox"/> On Label <input type="checkbox"/> On Labeling Accompanying Product	
6. Manner in Which Label is Affixed to Product		<input type="checkbox"/> Lithograph <input type="checkbox"/> Stenciled <input type="checkbox"/> Paper glued <input type="checkbox"/> Other _____	

Section - IV

1. Contact Point (Complete items directly below for identification of individual to be contacted, if necessary, to process this application).		
Name Kim Davis, CC, APC, Manager	Title Consultant/Agent	Telephone No. (Include Area Code) (970) 353-0611
Certification I certify that the statements I have made on this form and all attachments thereto are true, accurate and complete. I acknowledge that any knowingly false or misleading statement may be punishable by fine or imprisonment or both under applicable law.		6. Date Application Received (Stamped)
2. Signature 	3. Title Consultant/Agent	
4. Typed Name Kim Davis, CC, APC, Manager	5. Date February 11, 2004	

ThermaCELL® Mosquito Repellent (Refills)

EPA Reg. No. 71910-2

2/1

DISTRIBUTOR / REGISTRANT The Schawbel Corporation		ADDRESS 100 Crosby Drive; Bedford, MA 01730	
CONTAINER SIZES Butane Cartridge(s) (0.42 oz. each) Insect Repellent Mats (0.08 oz. each)	TYPE Plastic Plastic Pouch	LABEL DATE 08/03 (Boxes)	CODE None

Mat Label

Manufactured for:
THE SCHAWBEL CORPORATION
100 Crosby Drive
Bedford, MA 01730

**ThermaCELL® Mosquito Repellent
MAT**

Active Ingredient:
d-cis/trans allethrin 21.97%

Other Ingredients 78.03%

Total 100.00%

Keep Out of Reach of Children
CAUTION
See outer carton for additional precautionary statements and
Directions for Use.

Net weight: 0.08 oz.
EPA Reg. No. 71910-2 EPA Est. 43917-ITA-1

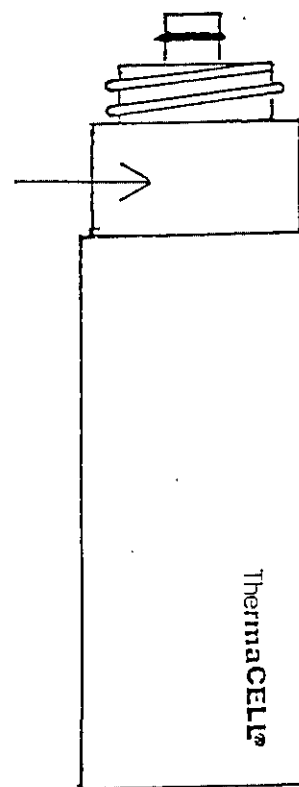
Made and Printed in Italy

Cartridge Label

ThermaCELL® **ThermaCELL®**
ThermaCELL® Butane Cartridge

IMPORTANT: Contains Butane. Contents under pressure. Do not puncture or incinerate. Do not use near sparks or open flames, store at temperatures above 120°F (50°C) or expose cartridge to prolonged sunlight. Keep cartridge out of children's reach. Use only with ThermaCELL® Mosquito Repellent. Seller is not responsible for damage caused by using this butane cartridge in other butane products.

Net Weight 0.42 oz.
The Schawbel Corporation, 100 Crosby Drive, Bedford, MA 01730



Mosquito Repellent Refills



ThermaCELL

ThermaCELL®



Mosquito Repellent Refills



For Appliance

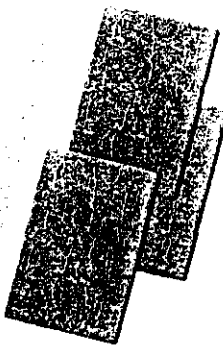


For Lantern

Mosquito Repellent Refills



Repellency lasts up to 12 hours



ThermaCELL®

Contains:

- 1 Butane Cartridge
- NET WT. 0.42 oz.
- 3 Insect Repellent Mats
- NET WT. 0.08 oz. each

ACTIVE INGREDIENT:	
d-cis/trans allethrin	21.97%
OTHER INGREDIENTS	78.03%
Total	100.00%

KEEP OUT OF REACH OF CHILDREN
CAUTION

See back panel for additional precautionary statements

ThermaCELL

ThermaCELL

DIRECTIONS FOR USE

It is a violation of Federal law to use this product in a manner inconsistent with the label. For best results allow 10 to 30 minutes, depending on the size of the area, for the repellent to take effect. Each cartridge lasts up to 12 hours. Mats for use in appliance/lantern for each 225 square feet or 1 change mats, make sure appliance/lantern is OFF and do not leave appliance/lantern on if it will contaminate food. Do not leave appliance/lantern on if it will contaminate food.

ThermaCELL Mosquito Repellent

1. Remove one mat from wrapper.
2. With appliance OFF and completely cool, insert under grill.
3. Remove appliance cover and butane cartridge. Screw cartridge into appliance and replace cover if provided.
4. **Full Size Appliance:** Switch appliance to ON. 10 seconds then depress START button 3 to 5 times in rapid succession. **Compact Appliance:** Slide open covering ignition port. Hold lit match or lighter to ignition port. Slide window closed to cover ignition port.
5. Verify appliance is heating; orange light at end of appliance will glow. Place appliance on a flat, stable surface.
6. **Full Size Appliance:** When finished using, turn OFF. **Compact Appliance:** When finished using, turn OFF.
7. Allow appliance to completely cool and then store.

Storage: Store unused mats in original packaging. Store butane cartridges in a cool, dry place away from heat or flame. Do not puncture or incinerate empty cartridges. **If cartridge is partly filled or for unused mats:** Never place unused mats down any indoor or outdoor surface.

PRECAUTIONARY STATEMENTS

Hazards to Humans & Domestic Animals: **CAUTION:** Only for outdoor use as an insect repellent. Avoid breathing vapors. Do not touch the repellent. Do not insert anything other than ThermaCELL® mats.

Physical and Chemical Hazards: Place appliance/lantern on a flat, stable surface. Only when the appliance/lantern is cool and inactive, remove the butane cartridge. Protect the butane cartridges from fire or flame. Do not pierce, break or incinerate butane cartridges. They will not work in this appliance/lantern. Seller will not be responsible for use of other butane cartridges or repellent mats.

Environmental Hazards: This pesticide is highly toxic to fish. Do not apply in or near aquatic sites.

First Aid: If inhaled: Move person to fresh air. If person is not breathing, provide artificial respiration. If swallowed: Do not induce vomiting. If on skin: Wash with plenty of water. Call a poison control center or doctor immediately with product name or label with you when calling.

EPA Reg.No. 71910-2
EPA Est. 71998-TMA-1
Protected by one or more of the following
U.S. Patents: 6,033,212; 5,700,430; D300,606

Manufactured for:
The Schawbel Corporation
100 Crosby Drive
Bedford, MA 01730
www.mosquitorepellent.com



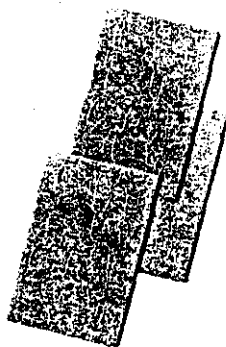
0 21363 24000 1

4/7



Mosquito Repellent Refills

Repellency lasts up to 12 hours



For Compact Appliance



For Mini Lantern

ThermaCELL

Mosquito Repellent Refills

DIRECTIONS FOR USE

It is a violation of Federal law to use this product in a manner inconsistent with its labeling. For best results allow 10 to 30 minutes, depending upon area, for product to take effect. Each mat lasts up to 4 hours and each cartridge lasts up to 12 hours. Mats turn from pale blue to white when repellent has been exhausted. Use one appliance/lantern for each 225 square feet or 15 feet in diameter. Use more appliances/lanterns in larger areas. To change mats, make sure appliance/lantern is OFF and cool, then push used mat out by inserting a fresh one. Do not contaminate food. Do not leave appliance/lantern unattended or use in windy conditions.

ThermaCELL Mosquito Repellent

1. Remove one mat from wrapper.
2. With appliance OFF and completely cool, insert mat under grill.
3. Remove appliance cover and butane cartridge cap. Screw cartridge into appliance and replace appliance cover if provided.
4. **Full Size Appliance:** Switch appliance to ON, wait 5 to 10 seconds then depress START button 3 to 5 times in rapid succession. **Compact Appliance:** Slide open window covering ignition port. Hold lit match or lighter near ignition port. Slide window closed to cover ignition port.
5. Verify appliance is heating; orange light at end of appliance will glow. Place appliance on a flat, stable area.
6. **Full Size Appliance:** When finished using, turn appliance OFF. **Compact Appliance:** When finished using, unscrew cartridge.
7. Allow appliance to completely cool and then store.

ThermaCELL Mosquito Repellent Lantern

1. Remove one mat from wrapper.
2. With lantern OFF and completely cool, insert mat under grill.
3. Remove butane cartridge cap and screw into lantern base opening. Place lantern on a flat, stable area.
4. **Full Size Lantern:** Rotate globe to MAX setting, wait 5 to 10 seconds then depress START button 3 to 5 times in rapid succession. **Mini Lantern:** Open lantern cover and hold a lit match or lighter near white tube in center. Close lantern cover.
5. Verify lantern is operating; lantern will glow. For full size lantern, adjust light by turning globe.
6. **Full Size Lantern:** When finished using lantern, rotate globe to OFF position. **Mini Lantern:** When finished using lantern, unscrew cartridge.
7. Allow lantern to completely cool and then store.

Storage: Store unused mats in original packaging in a cool, dry place inaccessible to children and pets. Store unit and butane cartridges in a cool, dry place away from sources of heat. **Disposal:** If empty: Do not reuse empty wrappers or cartridges. Do not puncture or incinerate empty cartridges. Place in trash or offer for recycling if available. **If cartridge is partly filled or for unused mats:** Call your local solid waste agency for disposal instructions. Never place unused mats down any indoor or outdoor drain.

PRECAUTIONARY STATEMENTS

Hazards to Humans & Domestic Animals

CAUTION: Only for outdoor use as an insect repellent. Do not use indoors, in tents or any enclosed area. Harmful if inhaled. Avoid breathing vapors. Do not touch the grill while the appliance/lantern is in use. The grill is hot while in use. Do not insert anything other than ThermaCELL® Mosquito Repellent mats into the appliance/lantern.

Physical and Chemical Hazards

Place appliance/lantern on a flat, stable surface. Do not cover with any material while in use. Clean with a damp cloth only when the appliance/lantern is cool and inactive. Cartridge contains flammable, pressurized butane. Do not use near fire or flame. Protect the butane cartridges from sunlight. Do not expose them to temperatures above 120°F (50°C). Do not pierce, break or incinerate butane cartridges, even after use. Butane cartridges other than ThermaCELL® cartridges will not work in this appliance/lantern. Seller will not be held responsible for damage, injury or poor performance caused by use of other butane cartridges or repellent mats.

Environmental Hazards

This pesticide is highly toxic to fish. Do not apply directly to water. Drift from treated areas may be hazardous to organisms in adjacent aquatic sites.

First Aid

If Inhaled: Move person to fresh air. If person is not breathing, call 911 or an ambulance, then give artificial respiration, preferably by mouth-to-mouth, if possible. Call a poison control center or doctor for further treatment advice. Have the product container or label with you when calling a poison control center or doctor, or going for treatment.



0 21363 24000 1

Mosquito Repellent Refills



ThermaCELL

ThermaCELL®



Mosquito Repellent Refills

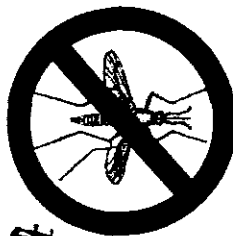


For Appliance

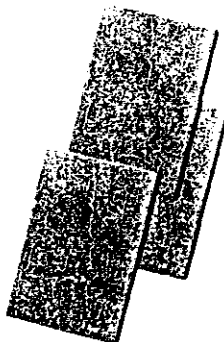


For Lantern

Mosquito Repellent Refills



Repellency lasts up to 12 hours



ThermaCELL®

Contains:

1 Butane Cartridge
NET WT. 0.42 oz.
3 Insect Repellent Mats
NET WT. 0.08 oz. each

ACTIVE INGREDIENT:
d-cis/trans allethrin 21.97%
OTHER INGREDIENTS 78.03%
Total 100.00%

KEEP OUT OF REACH OF CHILDREN
CAUTION

See back panel for additional precautionary statements

ThermaCELL



Mosquito Repellent Refills



For Compact Appliance



For Mini Lantern

ThermaCELL

Mosquito Repellent Refills

DIRECTIONS FOR USE

It is a violation of Federal law to use this product in a manner inconsistent with its labeling. For best results allow 10 to 30 minutes, depending upon area, for product to take effect. Each mat lasts up to 4 hours and each cartridge lasts up to 12 hours. Mats turn from pale blue to white when repellent has been exhausted. Use one appliance/lantern for each 225 square feet or 15 feet in diameter. Use more appliances/lanterns in larger areas. To change mats, make sure appliance/lantern is OFF and cool, then push used mat out by inserting a fresh one. Do not contaminate food. Do not leave appliance/lantern unattended or use in windy conditions.

ThermaCELL Mosquito Repellent

1. Remove one mat from wrapper.
2. With appliance OFF and completely cool, insert mat under grill.
3. Remove appliance cover and butane cartridge cap. Screw cartridge into appliance and replace appliance cover if provided.
4. **Full Size Appliance:** Switch appliance to ON, wait 5 to 10 seconds then depress START button 3 to 5 times in rapid succession. **Compact Appliance:** Slide open window covering ignition port. Hold lit match or lighter near ignition port. Slide window closed to cover ignition port.
5. Verify appliance is heating, orange light at end of appliance will glow. Place appliance on a flat, stable area.
6. **Full Size Appliance:** When finished using, turn appliance OFF. **Compact Appliance:** When finished using, unscrew cartridge.
7. Allow appliance to completely cool and then store.

ThermaCELL Mosquito Repellent Lantern

1. Remove one mat from wrapper.
2. With lantern OFF and completely cool, insert mat under grill.
3. Remove butane cartridge cap and screw into lantern base opening. Place lantern on a flat, stable area.
4. **Full Size Lantern:** Rotate globe to MAX setting, wait 5 to 10 seconds then depress START button 3 to 5 times in rapid succession. **Mini Lantern:** Open lantern cover and hold a lit match or lighter near white tube in center. Close lantern cover.
5. Verify lantern is operating, lantern will glow. For full size lantern, adjust light by turning globe.
6. **Full Size Lantern:** When finished using lantern, rotate globe to OFF position. **Mini Lantern:** When finished using lantern, unscrew cartridge.
7. Allow lantern to completely cool and then store.

Storage: Store unused mats in original packaging in a cool, dry place inaccessible to children and pets. Store unit and butane cartridges in a cool, dry place away from sources of heat. **Disposal:** If empty: Do not reuse empty wrappers or cartridges. Do not puncture or incinerate empty cartridges. Place in trash or offer for recycling if available. If cartridge is partly filled or for unused mats: Call your local solid waste agency for disposal instructions. Never place unused mats down any indoor or outdoor drain.

PRECAUTIONARY STATEMENTS

Hazards to Humans & Domestic Animals

CAUTION: Only for outdoor use as an insect repellent. Do not use indoors, in tents or any enclosed area. Harmful if inhaled. Avoid breathing vapors. Do not touch the grill while the appliance/lantern is in use. The grill is hot while in use. Do not insert anything other than ThermaCELL® Mosquito Repellent mats into the appliance/lantern.

Physical and Chemical Hazards

Place appliance/lantern on a flat, stable surface. Do not cover with any material while in use. Clean with a damp cloth only when the appliance/lantern is cool and inactive. Cartridge contains flammable, pressurized butane. Do not use near fire or flame. Protect the butane cartridges from sunlight. Do not expose them to temperatures above 120°F (50°C). Do not pierce, break or incinerate butane cartridges, even after use. Butane cartridges other than ThermaCELL® cartridges will not work in this appliance/lantern. Seller will not be held responsible for damage, injury or poor performance caused by use of other butane cartridges or repellent mats.

Environmental Hazards

This pesticide is highly toxic to fish. Do not apply directly to water. Drift from treated areas may be hazardous to organisms in adjacent aquatic sites.

First Aid

If inhaled: Move person to fresh air. If person is not breathing, call 911 or an ambulance, then give artificial respiration, preferably by mouth-to-mouth, if possible. Call a poison control center or doctor for further treatment advice. Have the product container or label with you when calling a poison control center or doctor, or going for treatment.

EPA Reg.No. 71910-2
EPA Est. 71998-THA-1
Protected by one or more of the following
U.S. Patents: 6,033,212; 5,700,430; 0300,606

Manufactured for:
The Schawbel Corporation
100 Crosby Drive
Bedford, MA 01730
www.mosquitorepellent.com



5/1

6/7

ThermaCELL®

Mosquito Repellent Refills



ThermaCELL®

ThermaCELL®

ThermaCELL®



Mosquito Repellent Refills

Mosquito Repellent Refills



Mosquito Repellent Refills

For use in
ThermaCELL Mosquito Repellent



Appliance



Lantern



Compact
Appliance



Mini
Lantern

Contains:

4 Butane Cartridges

NET WT. 0.42 oz. each

12 Insect Repellent Mats

NET WT. 0.08 oz. each

ACTIVE INGREDIENT:

d-cis/trans allethrin 21.97%

OTHER INGREDIENTS 78.03%

Total 100.00%

**KEEP OUT OF REACH
OF CHILDREN**

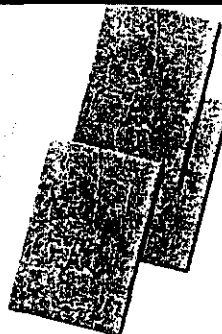
CAUTION

See back panel for additional
precautionary statements

Repellency
lasts up to
48 hours

Value Pack

ThermaCELL®



Package contains:

4 ThermaCELL Cartridges



12 Repellent Mats

Value Pack

- Repellency lasts up to 48 hours
- Each mat lasts up to 4 hours
- Each cartridge lasts up to 12 hours

EPA Reg.No. 71910-2
EPA Est. 75531-IL-1
Protected by one or more of the following
U.S. Patents: 6,033,212; 5,700,430; D300,606

Manufactured for:
The Schawbel Corporation
100 Crosby Drive
Bedford, MA 01730
www.mosquitorepellent.com



R-4

7/7

ThermaCELL

ThermaCELL

Mosquito Repellent Refills

DIRECTIONS FOR USE

It is a violation of Federal law to use this product in a manner inconsistent with its labeling. For best results allow 10 to 30 minutes, depending upon area, for product to take effect. Each mat lasts up to 4 hours and each cartridge lasts up to 12 hours. Mats turn from pale blue to white when repellent has been exhausted. Use one appliance/lantern for each 225 square feet or 15 feet in diameter. Use more appliances/lanterns in larger areas. To change mats, make sure appliance/lantern is OFF and cool, then push used mat out by inserting a fresh one. Do not contaminate food. Do not leave appliance/lantern unattended or use in windy conditions.

ThermaCELL Mosquito Repellent

1. Remove one mat from wrapper.
2. With appliance OFF and completely cool, insert mat under grill.
3. Remove appliance cover and butane cartridge cap. Screw cartridge into appliance and replace appliance cover if provided.
4. **Full Size Appliance:** Switch appliance to ON, wait 5 to 10 seconds then depress START button 3 to 5 times in rapid succession. **Compact Appliance:** Slide open window covering ignition port. Hold lit match or lighter near ignition port. Slide window closed to cover ignition port.
5. Verify appliance is heating; orange light at end of appliance will glow. Place appliance on a flat, stable area.
6. **Full Size Appliance:** When finished using, turn appliance OFF. **Compact Appliance:** When finished using, unscrew cartridge.
7. Allow appliance to completely cool and then store.

ThermaCELL Mosquito Repellent Lantern

1. Remove one mat from wrapper.
2. With lantern OFF and completely cool, insert mat under grill.
3. Remove butane cartridge cap and screw into lantern base opening. Place lantern on a flat, stable area.
4. **Full Size Lantern:** Rotate globe to MAX setting, wait 5 to 10 seconds then depress START button 3 to 5 times in rapid succession. **Mini Lantern:** Open lantern cover and hold a lit match or lighter near white tube in center. Close lantern cover.
5. Verify lantern is operating; lantern will glow. For full size lantern, adjust light by turning globe.
6. **Full Size Lantern:** When finished using lantern, rotate globe to OFF position. **Mini Lantern:** When finished using lantern, unscrew cartridge.
7. Allow lantern to completely cool and then store.

Storage: Store unused mats in original packaging in a cool, dry place inaccessible to children and pets. Store unit and butane cartridges in a cool, dry place away from sources of heat. **Disposal:** If empty: Do not reuse empty wrappers or cartridges. Do not puncture or incinerate empty cartridges. Place in trash or offer for recycling if available. **If cartridge is partly filled or for unused mats:** Call your local solid waste agency for disposal instructions. Never place unused mats down any indoor or outdoor drain.

PRECAUTIONARY STATEMENTS

Hazards to Humans & Domestic Animals

CAUTION: Only for outdoor use as an insect repellent. Do not use indoors, in tents or any enclosed area. Harmful if inhaled. Avoid breathing vapors. Do not touch the grill while the appliance/lantern is in use. The grill is hot while in use. Do not insert anything other than ThermaCELL® Mosquito Repellent mats into the appliance/lantern.

Physical and Chemical Hazards

Place appliance/lantern on a flat, stable surface. Do not cover with any material while in use. Clean with a damp cloth only when the appliance/lantern is cool and inactive. Cartridge contains flammable, pressurized butane. Do not use near fire or flame. Protect the butane cartridges from sunlight. Do not expose them to temperatures above 120°F (50°C). Do not pierce, break or incinerate butane cartridges, even after use. Butane cartridges other than ThermaCELL® cartridges will not work in this appliance/lantern. Seller will not be held responsible for damage, injury or poor performance caused by use of other butane cartridges or repellent mats.

Environmental Hazards

This pesticide is highly toxic to fish. Do not apply directly to water. Drift from treated areas may be hazardous to organisms in adjacent aquatic sites.

First Aid

If Inhaled: Move person to fresh air. If person is not breathing, call 911 or an ambulance, then give artificial respiration, preferably by mouth-to-mouth, if possible. Call a poison control center or doctor for further treatment advice. Have the product container or label with you when calling a poison control center or doctor, or going for treatment.

Mosquito Repellent Refills

Package contains:

4 ThermaCELL Cartridges



12 Repellent Mats

Value Pack

- Repellency lasts up to 48 hours
- Each mat lasts up to 4 hours
- Each cartridge lasts up to 12 hours

Repellency lasts up to 48 hours

Pack

