

FEB 26 2004

Ms. Julee E. Kasprisin  
State Industrial Products  
3100 Hamilton Avenue  
Cleveland, OH 44114

Subject: PR Notice 2001-1 & PR Notices 2001-6  
STATE SOK  
EPA Registration Number: 70799-10  
Application Date: October 16, 2003

Dear Ms: Kasprisin:

The labeling referred to above, submitted in connection with registration under the Federal Insecticide, Fungicide, and Rodenticide Act, as amended, will be acceptable once you submit the suggested modifications as mentioned below:

1. In accordance with PR Notice 2001-6, Revise your Storage and Disposal to read:

IF EMPTY: Do not reuse this container. Place in trash or offer for recycling if available.

IF PARTLY FILLED: Call your local solid waste agency or [toll free number which meets the criteria in paragraph II.E.] for disposal instructions. Never place unused products Down any indoor or outdoor rain.

Sincerely,



Richard Gebken, Acting  
Product Manager 10  
Insecticide Branch  
Registration Division (7505c)

**ACCEPTED  
with COMMENTS  
In EPA Letter Dated:**

**FEB 26 2004**

**Under the Federal Insecticide,  
Fungicide, and Rodenticide Act,  
as amended, for the pesticide  
registered under EPA Reg. No.**

**70799-10**

**FOR INDUSTRIAL AND INSTITUTIONAL USE ONLY. NOT INTENDED FOR HOUSEHOLD USE OR RESALE.**

**DIRECTIONS FOR USE** It is a violation of Federal law to use this product in a manner inconsistent with its labeling.

**SHAKE WELL BEFORE EACH USE.** Point valve away from face and press button. Hold can at least 3 feet from surfaces which may stain and 18 inches from plants.

**FOR CONTROL OF PESTS INDOORS: CRAWLING INSECTS:** Spiders, ants, bedbugs, cockroaches, waterbugs, crickets, silverfish, earwigs, sawbugs, centipedes, millipedes and carpet beetles. Spray thoroughly into hiding places such as cracks, crevices, moist areas, openings around pipes and sinks, under refrigerators, baseboards, and storage areas. Spray directly on insects where possible.

**FLYING INSECTS:** To kill houseflies, mosquitoes, gnats (midges), deer flies, stable flies, flying moths and fruit flies. Close all doors and windows. Point nozzle upward. Direct spray mist to all parts of the room especially window and other light sources which attract these insects. Fill the room with mist then leave the treated area. Keep the room closed for at least 1 hour. Ventilate the room before reoccupying.

**IN HOSPITALS:** Remove patients prior to treatment. Ventilate rooms for two hours before returning patients.

**FOOD AREAS:** Do not apply as a space spray while food processing is underway. Foods should be removed or covered before treatments. Thoroughly wash all food processing surfaces before reuse. In Federally inspected meat and poultry plants, all surfaces in processing areas must be washed and rinsed in potable water after spraying. In other food processing plants, if washing of equipment, benches, shelving, etc., where exposed food will be handled, is impractical, do not allow food to come in contact with treated surfaces for at least 48 hours.

**HORSE STABLES:** Should not be used if horses will be used for food.

**FOR CONTROL OF PESTS ON ORNAMENTAL PLANTS:** For control of aphids, exposed thrips, whiteflies, leafhoppers, plant bugs, spittle bugs, two-spotted mites, and spider mites, caterpillars and slugs on African violet, fuchsia, begonia, Christmas cactus, chrysanthemum, coleus, daisy, dracaena, esparganthe fern, larches, geranium, hibiscus, impatiens, ivy, jade, lilies, marigold, nasturtium, petunia, philodendron, rose, soapwort, wax plants and zinnias. Also for control on white birch, cypress, dogwood, forsythia, hemlock, holly, locust, maple, mimosa, non-bearing citrus and crabapple, oak, palm, pine, rhododendron and spruce.

Hold container 18 inches from infested plants. Spray in short bursts from 1 to 3 seconds or spray at the rate of 1 linear foot of growth per second. Direct spray to all sides covering foliage until slightly moist. Avoid heavy wetting. Spray several plants at once and in an area not likely to come in contact with pets, children or food. When leaves are dry return plant to original location.

**USE WITH CAUTION ON:** African violet, ash, azalea, Reiger begonia, camellia, cypress, plumose fern, glazinia, impatiens, juniper, jade and primrose. As with all plants listed, especially carnations, roses and chrysanthemums, there exists a wide variety of species and therefore a wide variety of susceptibility to injury. To determine possible phytotoxicity (harmful effects), spray a few plants as directed, wait 24 hours and check for possible injury.

**STORAGE AND DISPOSAL** Store the product in a locked storage area out of the reach of children. Store at temperature below 120°F. Store away from heat, sparks, open flame and direct sunlight. Keep from freezing.

**DISPOSAL:** Do not puncture or incinerate! If empty: Place in trash or offer for recycling if available. If partly filled: Call your local solid waste agency for disposal instructions.

**PRECAUTIONARY STATEMENTS  
Hazards to Humans and Domestic Animals  
CAUTION**

Harmful if swallowed or absorbed through skin. Avoid breathing vapors or spray mist. Avoid contact with skin and eyes. Remove pets and birds, and cover fish aquarium before spraying.

**ENVIRONMENTAL HAZARDS:** This pesticide is highly toxic to fish. Do not apply directly to water or wetlands (swamps, bogs, marshes, and potholes.) Drift from treated areas may be hazardous to organisms in adjacent aquatic sites. Do not contaminate water when disposing of wastes.

**PHYSICAL OR CHEMICAL HAZARDS:** Contents under pressure. Do not puncture or incinerate cans. Do not use near heat or open flame. Exposure to temperatures above 120°F may cause bursting.

**FIRST AID**

Have the product container or label with you when calling a poison control center or doctor or going for treatment.

**If in eyes:**

- Hold eye open and rinse slowly and gently with water for 15-20 minutes.
- Remove contact lenses, if present, after the first 5 minutes, then continue rinsing eye.
- Call a poison control center or doctor for treatment advice.

**If on skin or clothing:**

- Take off contaminated clothing.
- Wash skin immediately with plenty of water for 15-20 minutes.
- Call a poison control center or doctor for treatment advice.

**If swallowed:**

- Call a poison control center or doctor immediately for treatment advice.
- If a person sip a glass of water if able to swallow.
- Do not induce vomiting unless told to do so by a poison control center or doctor.
- Do not give anything by mouth to an unconscious person.

**If inhaled:**

- Move person to fresh air.
- If person is not breathing, call 911 or an ambulance, then give artificial respiration, preferably mouth to mouth if possible.
- Call a poison control center or doctor for further treatment advice.

Sold by: State Industrial Products  
© Copyright 2003 — State Industrial Products  
Product # 182227 30010

**STATE**  
World Headquarters  
3100 Hamilton Avenue  
Cleveland, OH 44114  
1 800 782-2436  
Canafo, Puerto Rico

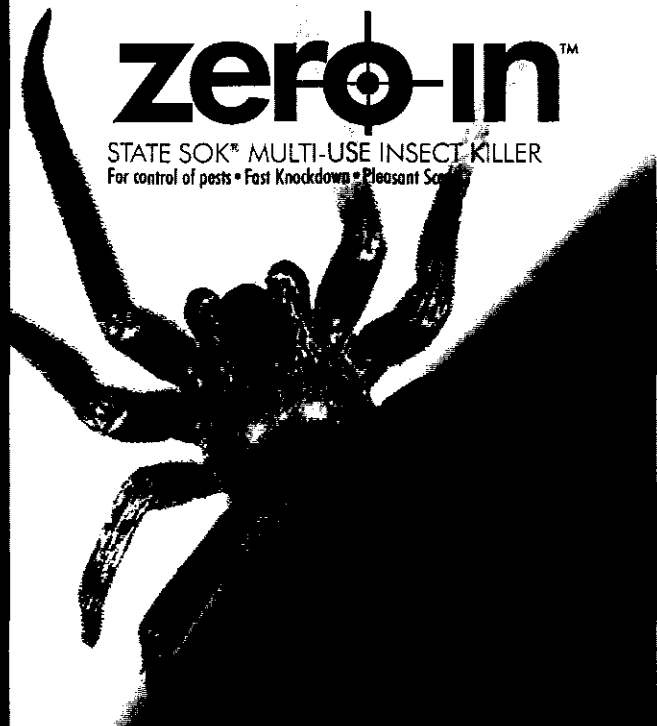
ZERO IN STATE SOK  
**MULTI-USE INSECT KILLER**



**GROUND CARE**

**zero-in™**

STATE SOK® MULTI-USE INSECT KILLER  
For control of pests • Fast Knockdown • Pleasant Scent



ACTIVE INGREDIENTS

INERT INGREDIENT

KEEP OUT OF REACH OF CHILDREN!  
**CAUTION**

**TORRENT**  
**170194**

**S**

282