



U.S. ENVIRONMENTAL PROTECTION AGENCY  
Office of Pesticide Programs  
Antimicrobials Division (7510P)  
1200 Pennsylvania Ave., N.W.  
Washington, D.C. 20460

EPA Reg. Number:

70627-86

Date of Issuance:

3/21/25

NOTICE OF PESTICIDE:

☒ Registration  
☐ Reregistration  
(under FIFRA, as amended)

Term of Issuance:

Unconditional

Name of Pesticide Product:

CitriVir 1 Wipes

Name and Address of Registrant (include ZIP Code):

Diversey, Inc.  
Electronic Transmittal: Sara Seltzer - [SSeltzer@solenis.com](mailto:SSeltzer@solenis.com)

**Note:** Changes in labeling differing in substance from that accepted in connection with this registration must be submitted to and accepted by the Antimicrobials Division prior to use of the label in commerce. In any correspondence on this product always refer to the above EPA registration number.

On the basis of information furnished by the registrant, the above named pesticide is hereby registered under the Federal Insecticide, Fungicide and Rodenticide Act (FIFRA).

Registration is in no way to be construed as an endorsement or recommendation of this product by the Agency. In order to protect health and the environment, the Administrator, on his motion, may at any time suspend or cancel the registration of a pesticide in accordance with the Act. The acceptance of any name in connection with the registration of a product under this Act is not to be construed as giving the registrant a right to exclusive use of the name or to its use if it has been covered by others.

This product is unconditionally registered in accordance with FIFRA section 3(c)(5) provided that you:

1. Submit and/or cite all data required for registration/reregistration/registration review of your product when the Agency requires all registrants of similar products to submit such data.

Signature of Approving Official:

Marcel Howard, Product Manager 34  
Regulatory Management Branch II  
Antimicrobials Division (7510P)

Date:

3/21/25

2. Make the following label changes before you release the product for shipment:

- Revise the EPA Registration Number to read, "EPA Reg. No. 70627-86."

3. Submit one copy of the revised final printed label for the record before you release the product for shipment.

Should you wish to add/retain a reference to the company's website on your label, then please be aware that the website becomes labeling under FIFRA and is subject to review by the Agency. See FIFRA section 2(p)(2). If the website is false or misleading, the product would be misbranded and unlawful to sell or distribute under FIFRA section 12(a)(1)(E). 40 CFR 156.10(a)(5) lists examples of statements EPA may consider false or misleading. In addition, regardless of whether a website is referenced on your product's label, claims made on the website may not substantially differ from those claims approved through the registration process, FIFRA section 12(a)(1)(B). Therefore, should the Agency find or if it is brought to our attention that a website contains false or misleading statements or claims substantially differing from the EPA approved registration, the website will be referred to the EPA's Office of Enforcement and Assurance.

If these conditions are not complied with, the registration will be subject to cancellation in accordance with FIFRA section 6. Your release for shipment of the product constitutes acceptance of these conditions. A stamped copy of the label is enclosed for your records. Please also note that the record for this product currently contains the following CSFs:

- Basic CSF dated 10/01/2024
- Alternate CSF 1 dated 06/02/2024
- Alternate CSF 2 dated 10/01/2024
- Alternate CSF 3 dated 10/01/2024
- Alternate CSF 4 dated 10/01/2024
- Alternate CSF 5 dated 10/01/2024

If you have any questions, please contact Terria Northern via email at [northern.terria@epa.gov](mailto:northern.terria@epa.gov).

Enclosure: Accepted label

{*Administrative note:* Note: Parenthesis ( ) or [bracketed text] is optional text, it might not appear on the printed label. Text appearing in {braces} is for administrative purposes only and will not appear on the printed label. Variables such as CAPITALIZATION, plurals or singular, **bold** and *italics* are optional unless specified in 40 CFR. Listed uses and use sites can be used partially or in their entirety. Underlined text is new. ~~Strike through~~ text means it has been removed.}

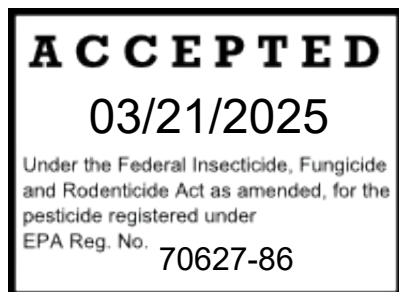
# CitriVir 1 Wipes

{Alternate Brand Names

CitriCare Wipes

CitriFend Wipes

CitriFense Wipes}



CitriIQ(TM) and design are trademarks of Virox Technologies, Inc., used under license

[Ready to Use] [Easy<sup>3</sup> to Use] [Towelettes] [Multi-Surface<sup>2</sup>] [Wipe(s)]  
One-Step<sup>4</sup> [Surface] [Hospital] Disinfectant [Cleaner][Sanitizer] [Sanitizing Wipes] [and Deodorizing] [Citric Acid] Wipes  
Cleaner • Disinfectant • Deodorizer • Deodorant • Sanitizer  
[General] \*Virucidal • Bactericidal • [Fungicidal] • [Tuberculocidal]  
[General] \*Virucide • Bactericide • [Fungicide] • [Tuberculocide]  
Hospital Disinfectant  
Just pull, wipe & toss!<sup>3</sup> • Eliminates Buckets • No need to Spray!

{*Administrative note:* Note: Parenthesis ( ) or [bracketed text] is optional text, it might not appear on the printed label. Text appearing in {braces} is for administrative purposes only and will not appear on the printed label. Variables such as CAPITALIZATION, plurals or singular, **bold** and *italics* are optional unless specified in 40 CFR. Listed uses and use sites can be used partially or in their entirety. Underlined text is new. ~~Strike through~~ text means it has been removed.}

Pre-moistened • Pre-measured • Always Ready-to-Use

No [measuring] [or mixing] required

[Meets surface disinfection recommendations under OSHA Bloodborne Pathogen Standard for \*HBV, \*HCV & \*HIV]

Intended For [insert use site(s) from table 4]

[For] [insert use site(s) from table 4] Use

For Use in [insert use site(s) from table 4]

Intended For [insert use site(s) from table 8]

[For] [insert use site(s) from table 8] Use

For Use in [insert use site(s) from table 8]

[Intended For] [Designed for] [Ideal for] [For] [Hospital,] [Health Care,] [Commercial,] [Industrial] & [Institutional]

[Residential] [Animal Health] [Animal Premises] Use<sup>2</sup> [Only]

[[Animal Health] Premises Disinfectant Cleaner<sup>3</sup>]

[For] Residential Use

[For] Home<sup>2</sup> Use

For Homecare<sup>2</sup> Use

For Home [and] [Healthcare] Use

For Office Use

For Veterinary<sup>2</sup> Use

For Aquaculture<sup>2</sup> Use

For Barn Use

For Farm Use

For Dental Clinic Use

[For Spa and Salon Use<sup>2</sup>] [For Use in Spas and Salons<sup>2</sup>] [and Clinics] [ideal for Pedicure Foot (Spas) (Basins) (Baths) (pedicure foot spa equipment)<sup>2</sup>.]

For Use in Personal Services

For Use in Alternative Care Clinics

For Use in Respiratory Therapy Clinics

For Use in Sleep Therapy Clinics

For Use in Allied Health Clinics

[For] [use in] Life Sciences [Research Facilities]

[For Use in] [For] Mold [and] Remediation [Use]

Active Ingredient:

Citric Acid: .....0.5%

Inert [Other] Ingredients: .....99.5%

Total: .....100.0%

KEEP OUT OF REACH OF CHILDREN

[See reference sheet [enclosed in each case] for [a complete list of pathogenic organisms] [additional features, claims] [and] [Directions for Use] [claimed for this product] [or product name]].

{NOTE to Reviewer: Due to space constraints, the Container Label may not include all of the organism claims and marketing claims approved on the Master Label. Therefore, a separate reference sheet containing additional organism claims and marketing claims is added at the end under title "Reference Sheet". This reference sheet may be inserted into the shipping case and/or distributed separately or be available at the point of sale. When a separate reference sheet is used, it will either include the use direction, precautions, etc. or contain the instructions to the user to see the product/container label for use directions, precautions, etc.}

{**Administrative note:** Note: Parenthesis ( ) or [bracketed text] is optional text, it might not appear on the printed label. Text appearing in {braces} is for administrative purposes only and will not appear on the printed label. Variables such as CAPITALIZATION, plurals or singular, **bold** and *italics* are optional unless specified in 40 CFR. Listed uses and use sites can be used partially or in their entirety. Underlined text is new. ~~Strike through~~ text means it has been removed.}

{Reference to SDS will not be on the residential use products}  
[USER(S) SHOULD] [READ S.D.S. BEFORE USING PRODUCT]  
[SDS is available on line at] [*insert URL link*]  
[SDS Ref. No.]

EPA Reg. No. 70627-XX  
EPA Est. No. [*insert EPA Est. No.*]

Net Contents: [*insert package contents*]  
[optional: wipe dimensions:] X x X [inches] [in.]  
[USA Patent #:] [For relevant patents]  
[Manufactured in: {*insert country*}]  
[Country of Origin: {*insert country*}]  
Manufactured [By] [For]:  
Diversey, Inc  
PO Box 19747  
Charlotte, NC 28219-0747

{**Warranty**} {Note to the reviewer: The warranty statement below will appear on select products}

[WARRANTY: Seller warrants that this product conforms to its chemical description and is reasonably fit for the purposes stated on the label when used in accordance with label directions under normal conditions of use, but to the extent consistent with applicable law, neither this warranty nor any other warranty of MERCHANTABILITY OR FITNESS FOR A PARTICULAR PURPOSE, expressed or implied, extends to the use of this product contrary to label instructions, or under abnormal conditions, or under conditions not reasonably foreseeable to Seller, and Buyer assumes the risk of any such use.]

{Note to the reviewer: The disclaimer statement below will appear on select products}

**[DISCLAIMER:** You must read and follow the instructions on the label for our product and use the product for the particular applications specified on the product label. To the full extent permitted under applicable law, Diversey, Inc. shall not be liable for any damages whatsoever, arising out of or otherwise in connection with any failure to follow those instructions or any use of its products which is not specified on the product's label. The instructions on the product label are not a warranty, express or implied, and Diversey, Inc. expressly disclaims any implied warranties, including any warranty of fitness for a particular purpose. Under applicable law, some of the above waivers or disclaimers of warranty, or exclusions of liability for certain types of damages may not apply to you. In such cases, our liability will be limited to the fullest extent permitted by applicable law.]

{**Worker Protection Standard: Spanish Statement**}

[Si no puede leer en ingles, pregunte a su supervisor sobre las instrucciones de uso apropiadas antes de trabajar con es producto. If you cannot read English, ask your supervisor to explain the appropriate directions for use before working with this product.]

{*Administrative note:* Note: Parenthesis ( ) or [bracketed text] is optional text, it might not appear on the printed label. Text appearing in {braces} is for administrative purposes only and will not appear on the printed label. Variables such as CAPITALIZATION, plurals or singular, **bold** and *italics* are optional unless specified in 40 CFR. Listed uses and use sites can be used partially or in their entirety. Underlined text is new. ~~Strike-through~~ text means it has been removed.}

### **{Fragrance Claims}:**

- Fragrance free [formula] {only for non-fragranced CSFs}
- No fragrance added {only for non-fragranced CSFs}one
- No added fragrances {only for non-fragranced CSFs}
- Scent [fragrance] free {only for non-fragranced CSFs}
- Unscented {only for non-fragranced CSFs}

{Note to reviewer: below claims are only for products using fragranced CSFs}

- [With] [contains] [calming] [serene] [natural] Aloe [scent[ed]] [fragrance] [essence]
- [With] [Natural] Aloe [fragrance] [scent] [essence]
- Fruity Floral Musk [Scent]
- [Helps] eliminate odors
- [Febreeze] [fresh scent]
- Leave nothing but a [fresh scent] [light scent] [clean scent] behind
- Long lasting [Febreeze] fresh scent
- Scent [fragrance] free
- The smell [of] clean
- With Febreeze [fresh scents] [freshness]
- Natural [Scent] [Botanical] [Fragrance] [Essence]
- Cherry [almond] [crush] [sparkle] [spritz] [Fragrance] [Essence] [Scent]
- [Citrus] [mandarin] [shine] [fizz] [sparkle] [renewal] [spring], [crisp] [outdoor] [fresh orange] [citrus] [Fragrance] [Essence] [Scent]
- [Refreshing] [citrus] [mandarin] [spring] [lime] [breeze] [rain] [waterfall] [sparkle] [fizz] [Fragrance] [Essence] [Scent]
- [Sparkle & Shine] [lime] [shine] [fizz] [sparkle], [green clean], [rushing waterfall], [spring clean], [clean spring] [waterfall] [Fragrance] [Essence] [Scent]
- Sparkling Sky, [fresh] [clean] [rain] [breeze] [sky] [renewal] [herbal rain] [Fragrance] [Essence] [Scent]
- Fresh Blossom [Fragrance] [Essence] [Scent]
- Fresh Meadow [Fragrance] [Essence] [Scent]
- Lemon [Shine] [Fragrance] [Essence] [Scent]
- Spring Refresh [Fragrance] [Essence] [Scent]

### **{Marketing Claims}:**

- 1 Minute Disinfection
- 10 Second [Sanitizing] [Sanitizer]
- A disinfectant (cloth) (towelette) for use on telephone surfaces and other telecommunications equipment surfaces
- A disinfectant (and) cleaner (that cleans, disinfects and deodorizes in one labor saving step<sup>4</sup>)
- A citric acid solution impregnated in a wiping cloth
- A non-woven disposable (cloth) (towelettes) for use in dental offices and other critical care areas where control between surfaces in required
- A non-woven disposable (cloth) (towelettes) for use in hospitals and other critical care areas where control between treated hard, non-porous surfaces is required
- After use, just toss<sup>3</sup> wipe(s) away
- Aids in reducing (or in the reduction of) cross contamination between treated hard, non-porous surfaces
- Always ready to use
- (Antibacterial) (antimicrobial) (health club equipment wipes)
- Antibacterial (surface) cleaner (cloth) (wipe) (towelette)
- (Appropriate) (ideal) (for) cleaning patient discharge
- An effective One-step sanitizer-cleaner<sup>4</sup> wipe (towelette) for use on hard non-food contact surfaces
- Assures proper dilution strength for product effectiveness

{*Administrative note:* Note: Parenthesis ( ) or [bracketed text] is optional text, it might not appear on the printed label. Text appearing in {braces} is for administrative purposes only and will not appear on the printed label. Variables such as CAPITALIZATION, plurals or singular, **bold** and *italics* are optional unless specified in 40 CFR. Listed uses and use sites can be used partially or in their entirety. Underlined text is new. ~~Strike-through~~ text means it has been removed.}

- An effective way to clean, deodorize against odor-causing organisms and disinfect hard, non-food contact surfaces<sup>2</sup>
- Available in[XX] [refills] [pouches] count[s]
- Available in [wipe] refills [wipe] [pouches]
- Bio-based wipe substrates<sup>^</sup>
- Botanical active ingredient
- Botanically derived active ingredient
- Built in (tough) scrubbing fibers help clean
- [Bactericidal] [\*Virucidal] [Fungicidal] [Tuberculocidal] [Hospital] [Disinfectant][Sanitizer][activity]
- [Bactericidal] [\*Virucidal] [&] [Fungicidal] [Tuberculocidal] in 1 minute
- Citric acid [active -and/or- based] [disinfectant -and/or- cleaner]
- Citric acid -and/or- extract [based] [disinfection]
- Can help reduce the risk of cross contamination on treated hard, non-porous surfaces
- Can help reduce cross contamination on treated hard,non-porous surfaces
- Compatible with (suitable for) (will not harm) most hard, non-porous surfaces
- Compatible with [equipment<sup>2</sup>] [and] [hard] [non-porous] surfaces
- Convenient
- Convenient way to disinfect (bathrooms) (office) (nursing station (high touch) hard, non-porous surfaces everyday
- Convenient (portable) way to disinfect hard, non-porous surfaces
- Cleaner and disinfectant towelette [or cloth]
- Cleans effectively
- Cleans more surfaces (with just one wipe)
- Clean you expect. Ingredients you can trust
- Cleans [removes] [eliminates] [destroys] stains
- Cleans [tough] grease and grime [and] [institutional] [soils] [fast] [without scratching surface]
- Cleans [tough] soap scum
- Cleans with just a (wipe) (or) (touch)
- Cleans without lightening or discoloration
- Cleans without scratching surface[s]
- [designed] [ideal] [effective] [intended] for (non-critical<sup>6</sup>) hard, non-porous [healthcare] surfaces [in healthcare]
- Designed to do the job (right)
- Designed specifically to [effectively] eliminate odors caused by mold
- Disinfects (health club equipment) (treadmill handles) (elliptical handles) (exercise bike handles) (weight benches)
- Disinfects in 1 Minute [against bacteria, \*viruses, [TB] [Mycobacteria], and fungi]
- Disinfects surfaces<sup>2</sup> by killing [99.9%] SARS-Related Coronavirus 2 [SARS-CoV2] [USA-WA1/2020]
- (Disinfects) hard surfaces<sup>2</sup> (that people touch)
- Disinfects pre-cleaned surfaces<sup>2</sup>
- Dispenses one wipe at a time
- Double sided scrubbing wipes
- Durable, lint free wipe designed for sensitive equipment surfaces
- Dye free [formula]
- Easy [drop-in] refill[s] [pouches] [option]
- Easy to seal package (canister) (container) (refill) keeps (your) wipes moist
- Easy flip-top lid
- Easy<sup>3</sup> to use – just wipe [and] [walk away]
- (Easy) (Convenient) (Dispensing) lid (closure) (cap) (package)
- (made from renewable resources)
- Eliminates potential for overspray
- Eliminates odors [caused by bacteria], [mold], [mildew]
- (Extra-large) (disinfecting) towelettes)
- Effective in 1 minute against *Staphylococcus aureus*, *Salmonella enterica*, and *Pseudomonas aeruginosa*
- Effective daily [cleaner] [Wipes]

{*Administrative note:* Note: Parenthesis ( ) or [bracketed text] is optional text, it might not appear on the printed label. Text appearing in {braces} is for administrative purposes only and will not appear on the printed label. Variables such as CAPITALIZATION, plurals or singular, **bold** and *italics* are optional unless specified in 40 CFR. Listed uses and use sites can be used partially or in their entirety. Underlined text is new. ~~Strike-through~~ text means it has been removed.}

- Effective against SARS-Related Coronavirus 2<sup>2</sup> [SARS-CoV-2] [USA-WA1/2020] [in 1 minute]
- Effective against SARS-CoV-2 virus<sup>2</sup> (agent of the respiratory illness COVID-19) responsible for the COVID-19 pandemic
- Effective against SARS-Cov-2<sup>2</sup> (COVID 19 virus) [the virus that causes COVID-19]
- Effective against mold & mildew
- Effective [shelter] [and] [or] [vet] [clinic] [practice] disinfectant
- Effectively disinfects in the presence of organic soil [5% blood serum]
- Effectively disinfects hard, non-porous surfaces
- Everyday Confidence
- Eliminates odors [caused by bacteria], [fungi] [mold]
- Fast (convenient) (portable) way to clean hard, non-porous surfaces
- Fast-acting cleaner
- For hard, non-porous surfaces
- For use in critical care areas where the reduction of (the risk of) cross contamination between treated, hard, non-porous surfaces of prime importance
- For use [in] [Hospitals], [and] [Health Care], settings [as a multi-purpose disinfectant cleaner].
- For non-scratch cleaning of showers tubs, shower doors and (non-porous) curtains, fixtures and exterior surfaces of toilet bowls
- For use as a mold preventative or remediation treatment in areas where mold [can be] [or has been] [is] a problem.
- Formulated with [patented] citric acid [technology]
- Formulated with [patented] Citr-IQ™ [Technology].
- From the [creators] [inventors] [innovators] [developers] [engineers] [designers] [architects] [masterminds] [makers] [pioneers] [builders] [formulators] [founders] of AHP<sup>14</sup> [Accelerated Hydrogen Peroxide<sup>14</sup>]
- Great for on-the-go cleaning
- Great on-the-go disinfectant [cloth]<sup>2</sup>
- Hard non-porous surface cleaning made easy
- Helps aid in reduction of cross contamination of treated hard, non-porous surfaces
- Hospital (disinfectant) (disinfection)
- Intense cleaning action
- Inspired by nature
- Just (dispense) /(pull), wipe and toss<sup>3</sup>
- Kills 99.9% of Bacteria [in 1 minute]
- Kills 99.9% of [bacteria], [\*viruses], [TB<sup>16</sup>], [Mycobacteria<sup>16</sup>] [and] [fungi]
- Kills 99.9% of germs
- Kills [Disinfects] 99.9% of bacteria listed on the (product) label [in] [60 seconds] [1 minute]
- Kills [Disinfects] 99.9% of germs [in] [60 seconds] [1 minute]
- Kills [Disinfects] 99.9% of [*insert bacteria*] [in] [60 seconds] [1 minute]
- Kills [99.9%] HIV-1 [AIDS virus] [HTLV-III<sub>B</sub>]
- Kills [99.9%] Norovirus [Norwalk virus]
- Kills *Candida auris*
- Kills mold & mildew
- Kills [Eliminates 99.9%] SARS-Related Coronavirus 2<sup>2</sup> [SARS-CoV-2] [USA-WA1/2020] [causative agent of COVID-19] [the virus that causes COVID-19]
- Kills [99.9% of] SARS-CoV-2<sup>2</sup>, which causes COVID-19<sup>7, 2</sup>
- Kills [Effective against] the virus that causes COVID-19<sup>7, 2</sup>
- Kills [99.9% of] SARS-CoV-2 [COVID 19 virus] [virus] on hard non-porous surfaces
- Kills [99.9% of] SARS-CoV-2 Virus<sup>2</sup> [formerly called SARS-nCoV]
- Kills Influenza A & B Viruses [in 60 seconds] [in 1 minute]
- Kills Norovirus [Norwalk virus]
- Kills Human Coronavirus
- Kills antibiotic-resistant organisms<sup>17</sup>



{*Administrative note:* Note: Parenthesis ( ) or [bracketed text] is optional text, it might not appear on the printed label. Text appearing in {braces} is for administrative purposes only and will not appear on the printed label. Variables such as CAPITALIZATION, plurals or singular, **bold** and *italics* are optional unless specified in 40 CFR. Listed uses and use sites can be used partially or in their entirety. Underlined text is new. ~~Strike-through~~ text means it has been removed.}

- Kills HIV-1 [AIDS virus] [HTLV-III<sub>B</sub>]
- Kills HCV\*
- Kills HBV\*
- Kills Rhinovirus [Type 37]
- Landfill-Free Disinfectant (Disinfection)
- Leaves non (dull) (sticky) residue
- List kills times/ features
- Leave[s] no streak[s]
- [Leaves] no residue
- Leaves [virtually] no [annoying] [chemical] [scum] [residue] [film]
- [Leaves] No Harsh Chemical Residue
- [Leaves] No residue
- Long lasting freshness
- [Mold] [mildew] [stain] [cleaner] [remover]
- Mildewcidal in 3 Minutes
- Multi-Purpose [Cleaner]
- New [and] [&] [Improved] {*Note to reviewer: This statement will only be used for 6 months after the launch of a new product*}
- No harsh (chemical) fumes
- No [Harsh] [Harmful] [Chemical[s]] [Fumes] [Residue]
- No [Water] Rinse Required
- No measuring
- No mixing (no sponges) (no rags) (no buckets) (no mess)
- No mixing, measuring, or rinsing required<sup>1</sup>
- No need to spray
- Non-flammable
- Non-tainting, leaves no unsightly residues
- Non-synthetic wipe
- No rinse required<sup>1</sup> No streaking [or filming] formula
- No rinsing or wiping is required except on food contact surfaces<sup>2</sup> which require a potable water rinse after [use] [treatment] [disinfection]
- No streaking (or) (filming) (sticky residue) (formula)
- On-the-go disinfectant<sup>2</sup>
- Patented [technology] [product]
- Picks up (particles) (dust) (dirt) (hair) (crumbs)
- Plant-based wipe substrates<sup>^</sup>
- Portable
- Powerful cleaning
- Powerful bubbles blast away [dried] [stuck on] dirt [grime] [food] [spills] [grease] [greasy messes]
- Powers away through stains [stuck on dirt]
- Pre-measured (towelette) (wipe)
- Pre-measured to have the recommended amount of germicidal solution, wipe after wipe
- Pre-moistened (towelette) (wipe)
- Pre-moistened with specially formulated cleaners to handle daily clean-ups without bottles, sponges or buckets
- Pre-soaked (towelette) (wipe)
- Proceed with certainty
- Quickly cleans floors<sup>16</sup> to a shine
- Refills [available]
- Refill pouch
- Reuse your (empty) canisters (again) (and) (again) (!)
- Requires no mixing or measuring and are ready-to-use
- Rust-free

{*Administrative note:* Note: Parenthesis ( ) or [bracketed text] is optional text, it might not appear on the printed label. Text appearing in {braces} is for administrative purposes only and will not appear on the printed label. Variables such as CAPITALIZATION, plurals or singular, **bold** and *italics* are optional unless specified in 40 CFR. Listed uses and use sites can be used partially or in their entirety. Underlined text is new. ~~Strike-through~~ text means it has been removed.}

- Removes allergens<sup>8</sup>
- Removes dog (and) [cat] pheromones
- Safe [to use] [for use] on the following surface(s) [material(s)]: *[insert surface material from table 2 or 6]*
- Safe for use across a wide range of surfaces (from *[insert surface material from table 2 or 6]* to *[insert surface material from table 2 or 6]*)
- Safe on surfaces<sup>2</sup>
- Sanitizes in [only] 10 seconds!
- Scrubbing power of a sponge in a wipe<sup>3</sup>
- Simplifies [cleaning -and/or- disinfecting]
- Simplify [cleaning -and/or- disinfecting]
- Shelf-stable formula
- Smell of clean [is no smell]
- Suitable for everyday use
- Specially designed to dissolve (penetrate) the toughest (stubborn) soils
- Stay-moist package
- Step-saving, (Labor-saving,) (Time-saving,) (cost-saving) formula
- Strong (towelette) (wipe)
- Surfaces are more than just cleaned, they are disinfected
- Superior surface compatibility
- Telephone [cleaner [and] disinfectant] wipes
- The beauty of disinfection
- Textured wipe for effective (cleaning) (disinfectant)
- Textured wet cloths [cleansers] traps & locks dirt [& grime] [deep in cloth]
- Textured wet cloths cut through dirt [& grime]
- The wipes are a convenient way to disinfect hard, non-porous surfaces
- This product [or product name] has demonstrated effectiveness against SARS-CoV-2<sup>2</sup> [SARS-CoV-2 (the virus that causes COVID-19)]
- Towelette
- To clean mold stains or odors
- (Textured) (strong) (towelettes) (for) (with) (scrubbing power)
- (Use this product to) kill(s) germs<sup>4</sup> and bacteria instead of [germy] towels, sponges, and rags
- (Use wipes) (Use product) to kill germs<sup>4</sup> and bacteria instead of [germy] towels, sponges, and rags
- Use to pre-clean or decontaminate critical or semi-critical medical devices prior to sterilization/ high level disinfection
- Versatile, Convenient formula
- \*Virucidal (surface) cleaner
- Waste-Free Disinfectant (Disinfection)
- Where the reduction of the risk of cross contamination between treated hard, non-porous surfaces is of prime importance

{*PRODUCT SPECIFIC CLAIMS*}:

- Cleans and removes bacteria<sup>3</sup>
- Cleans [floors] [wall to wall]
- [Green] Trap & lock strip
- Long lasting freshness
- [Quickly] cleans floors to a shine
- Scrubbing strip powers through [tough] [dried-on] [sticky] [messes] [dirt]
- [Textured wet cloths] [cleansers] Traps & Locks Dirt [& Grime] [deep in cloth]
- Textured Wet Cloths Cut Through Dirt [& Grime]

{*PACKAGING CLAIMS*}

{*Administrative note:* Note: Parenthesis ( ) or [bracketed text] is optional text, it might not appear on the printed label. Text appearing in {braces} is for administrative purposes only and will not appear on the printed label. Variables such as CAPITALIZATION, plurals or singular, **bold** and *italics* are optional unless specified in 40 CFR. Listed uses and use sites can be used partially or in their entirety. Underlined text is new. ~~Strike-through~~ text means it has been removed.}

- (x) (Multi) (Pack) (Canister) (Package) X (canisters) (containers) with x refill (pouches)
- (+) (x) (Pack) (Free) (Wipes)
- 2 (for) (in) 1 Pack (!)
- 2-Go (2) (3)
- (X) Scent(s) (pack)
- 2x value (!)
- (3) (Canisters) (Packages) (Each) (Total)
- (90%) (XX) less plastic (packaging) (when compared to regular canisters)
- Also available (in)(as) (the) (a) (X) (count) (size) (pack)
- (Also) Available in (60) (and) (160) (X) count
- (Bonus Pack) (With) (Free Canister) (Free Package) (Free Pouch)
- (Calendar) (sticker) (provided) on (wipe) refill (wipes) (pouches) (to (easily keep) track (of) expiry date)
- (Easily) Grab (wipes) one at a time - Easy open
- (Easy fill) Easy pull (from start to finish)
- [Easy] [Tear] [notch] [away] [off] [refill] [pouch]
- [Tear] [notch] [away] [off] [refill] [pouch] [-no scissors required]
- Tear at perforation
- Contains (*insert number*) canisters (plus) (and) (*insert number*) refills
- Contains (90%) (XX) Less Plastic [Packaging]
- Easy to use
- easy to refill
- Easy to use package [canister] [container] keeps [your] wipes moist
- Economical refills (now) available
- Economical refills (*insert number*) pack
- Fills (x) (ct) (size) (wipe) (cloth) (canisters) (peel & reseal) (package) (packages)
- Includes (*insert number*) count refill (pack) (contains) (*insert number*) wipes
- Moisture lock lid
- No canister needed
- Reduces [packaging] waste [by x%] [when compared to regular canister or bucket or pail]
- Reuse your [empty] canisters [again [and again] [!]
- Refill in 1-2-3
- Refill in only 3 steps
- Moisture lock lid
- No sponges, no rags, no buckets, no mess
- Reuse your [empty] canisters [again [and again] [!]
- Time to reorder
- (Refill) (size) (pack) (value pack) (pouch)
- Refills (available)
- Effortless dispensing (!)
- Fills (x) (ct) (size) (wipe) (cloth) (canisters) (peel & reseal) (package) (packages)
- (Pull) (Get) 1 wipe at a time, every time!
- (Quick) (Ready) (Pull) (Dispense) (Dispensing)
- Scratch (and) (&) ('N) Sniff
- Scratch (Me) (Here)
- Tear [off] [away] Here

(FORMULATION CLAIMS FOR PLANT-BASED SUBSTRATE)

- (100%) (Fully) (Completely) (plant) (bio) -based [(fibers) (material) or (cloth)]
- (Absorbent) (Wipes) (Wipe) (Cloth) (Material)

{**Administrative note:** Note: Parenthesis ( ) or [bracketed text] is optional text, it might not appear on the printed label. Text appearing in {braces} is for administrative purposes only and will not appear on the printed label. Variables such as CAPITALIZATION, plurals or singular, **bold** and *italics* are optional unless specified in 40 CFR. Listed uses and use sites can be used partially or in their entirety. Underlined text is new. ~~Strike through~~ text means it has been removed.}

- By switching to (100%) plant-based [(fibers) (material) or (cloth)], each pack avoids the equivalent of (X plastic bags) (X plastic bottles) from being disposed of Cloth-Like (Contains) (Made) with plastic-free (disinfecting) (wipes) (wipe) (material) (cloth(s)) Cloth made (from) (with) 100% (plant-based) (plant-derived) (bio-based) fibers
- Cloths made (from) (with) plant(s) (-derived) (-based) fibers, not (petroleum) (plastic)
- Made (from) (with) (100%) (plant) (bio) (-based) fibers
- Plastic Free [(Cloth) (Material) (Fibers)] (made from (100%) (plant-based) (bio-based) (plant-derived) (fibers))

**{Bonus Pack Claims}:**

- Contains (*insert number*) canisters (plus) (and) (*insert number*) refills
- [Economical] refills (now) available
- [Economical] refill[s] (*insert number*) pack
- Includes (*insert number*) count refill (pack) (contains) (*insert number*) wipes
- (Refill) (size) (pack) (value pack)
- Value
- Bonus Pack
- Bonus Size
- Bundle Pack
- Club Size
- Combo Pack
- Spring Cleaning [Bundle] Pack
- Starter Kit
- Value Pack
- Value Pack, [x Pack], [Large Pack], [Large Size]
- Wet & Dry [Bundle] Pack

**{Wipe Substrate Claims}:**

- Wipe [fabric] [substrate] [towelette] composed of [12% + X% of pulp] recyclable materials
- Wipe [fabric] [substrate] [towelette] composed of [X% of pulp] renewable materials
- Wipe [cloth] [towelette] made from plant derived fibers
- Wipe [fabric] [substrate] [towelette] composed of [100%] recyclable materials
- Wipe [fabric] [substrate] [towelette] composed of [100%] renewable materials
- Biodegradable [Compostable] wipe [fabric] [substrate] [towelette]
- Wipe [fabric] [substrate] [towelette] biodegrades after disposal
- [Fully] Biodegradable [Compostable] wipe
- Wipe [fabric] [substrate] [towelette] composed of [70%] renewable materials

**{New and Improved Claims}:** {Note to Reviewer: The following claims might be inserted on the container label only for a 6 month period after the launch}:

- [Better] [Improved] [New] [New and improved] [formula] [packaging]
- [New and improved product]
- [New Claims]
- [New Kill Claims]
- [New - Saves Time]
- Now[!] -and/or- New[ly][!] -and/or- Improved[!]
- [Brand] [New]
- Improved surface compatibility
- Changing the way, we disinfect
- Changing the way, you think about disinfection
- Rethinking Disinfection

{*Administrative note:* Note: Parenthesis ( ) or [bracketed text] is optional text, it might not appear on the printed label. Text appearing in {braces} is for administrative purposes only and will not appear on the printed label. Variables such as CAPITALIZATION, plurals or singular, **bold** and *italics* are optional unless specified in 40 CFR. Listed uses and use sites can be used partially or in their entirety. Underlined text is new. ~~Strike-through~~ text means it has been removed.}

{*Note to Reviewer: the following section on summary of claims is optional and might be inserted in a band at the side/top/bottom of the label*}

VIRUCIDAL: 1 MINUTE

BACTERICIDAL: 1 MINUTE

FUNGICIDAL: 1 MINUTE

TUBERCULOCIDAL: 1 MINUTE

[NON-FOOD CONTACT] SANITIZER: 10 SECONDS

#### **[Features, Claims and Uses:]**

##### **[For General Uses] [For Use in *[insert use sites from table 4]*]**

- This product [*or product name*] is a one-step<sup>4</sup> [hospital-use] [germicidal] [disinfectant] [cleaner] [and] [deodorant] [odor-counteractant] [odor neutralizer] [wipe] designed for [general] [cleaning,] [and] disinfecting, [deodorizing] [of] hard, non-porous [environmental] [surfaces].
- This product [These] is [are] [is a] [non-woven,] [disposable] [towelette[s]] [wipe[s]], pre-saturated with a citric acid [based] disinfectant cleaner.

[This product] [*or product name*] [It] cleans quickly by removing [*insert any soil from table 1*] [found in [*insert use site from table 4*]].

- This product [*or product name*] is [designed] [ideal] [effective] [intended] for use on hard, non-porous [environmental] surfaces [such as]: [*insert surface material from table 2*] [associated with [high] touch [environmental] surfaces] [including] [such as] [floors<sup>16</sup>], [walls], [ceilings] – [*insert hard non-porous surface from table 3*] [– or – any hard non-porous [washable] (non-food contact) surface [where disinfection is required].]
- [This product's non-dulling formula eliminates the time and labor normally required for rinsing]. [It [also] reduces odor-causing bacteria leaving surfaces smelling clean and fresh].
- [This product (product name) (is) (are) [designed] [ideal] [effective] [intended] for [cleaning and] disinfection of hard non-porous surfaces in [*insert use sites from table 4*]].
- [[This product] [It] [is] [ideal] [[designed] [effective] [intended]] for [daily] use on [hard, non-porous [environmental] (inanimate) surfaces] [such as] [*insert surfaces from table 3*]].

##### **[For Use in *[insert Medical and Dental use sites from table 4]*]**

- This product [*or product name*] is a one-step<sup>4</sup> [hospital-use] [germicidal] [disinfectant] [cleaner] [and] [deodorant] [odor-counteractant] [odor neutralizer] [wipe] [designed] [ideal] [effective] [intended] for [general] [cleaning,] [and] disinfecting, [deodorizing] [of] hard, non-porous [environmental] [surfaces].
- This product [These] is [are] [is a] [non-woven,] [disposable] [towelette[s]] [wipe[s]], pre-saturated with a citric acid [based] disinfectant cleaner.
- [This product] [*or product name*] [It] cleans quickly by removing [*insert any soil from table 1*] [found in [*insert Medical and Dental use site from table 4*]].
- This product [*or product name*] is [designed] [ideal] [effective] [intended] for use on hard, non-porous [environmental] surfaces [such as]: [*insert surface material from table 2*] [associated with [high] touch

{**Administrative note:** Note: Parenthesis ( ) or [bracketed text] is optional text, it might not appear on the printed label. Text appearing in {braces} is for administrative purposes only and will not appear on the printed label. Variables such as CAPITALIZATION, plurals or singular, **bold** and *italics* are optional unless specified in 40 CFR. Listed uses and use sites can be used partially or in their entirety. Underlined text is new. ~~Strike-through~~ text means it has been removed.}

[environmental] surfaces [including] [such as] [floors<sup>16</sup>], [walls], [ceilings] – [*insert hard non-porous surface from table 3*] [ – or – any hard non-porous [washable (non-food contact)] surface [where disinfection is required.]]

- [This product's non-dulling formula eliminates the time and labor normally required for rinsing]. [It [also] reduces odor-causing bacteria leaving surfaces smelling clean and fresh].
- [This product (Product Name) (is) (are) [designed] [ideal] [effective] [intended] for [cleaning and] disinfection of hard non-porous surfaces in {*insert medical and dental use sites from table 4*}].
- [[This product] [It] [is] [ideal] [ [designed] [effective] [intended]] for [daily] use on [hard, non-porous [environmental] (inanimate) surfaces] [such as] {*insert surfaces from table 3*}].

**[For Residential Use] [Home Use] [Household Use] [For Use in [*insert use sites from table 8*]]**

- This product [*or product name*] is an effective [cleaner] [disinfectant] [sanitizer] [wipe] on non-food contact surfaces in [around] [*insert use site from table 8*]
- This product [*or product name*] is a[n] [Antibacterial] [Multi-Purpose] [Bathroom] [Floor] [Glass] [&] [Surface] [Kitchen<sup>1</sup>] [Restroom] [Cleaner] [Cleaning] [Disinfectant] [Disinfecting] [Sanitizer] [wipe].
- [This product] [*or product name*] [It] cleans quickly by removing [*insert any soil from table 5*] [found in [*insert residential use site from table 8*]]
- [This product is] for use [in] [on] [the] [*insert use site from table 8*], common hard non-porous household surfaces.
- For everyday cleaning [and disinfecting] [use daily to clean [and disinfect]] [on] hard, non-porous surfaces [where germs are a concern] [made from] [*insert surface material from table 6*] associated with kitchen<sup>1</sup> surfaces, [high] [hand] touch surfaces [all over the house], [*insert hard non-porous surface from table 7*] and other hard [non-food contact] surfaces around the house [hold] [home].
- [This product (Product Name) (is) (are) [designed] [ideal] [effective] [intended] for [cleaning and] disinfection of hard non-porous surfaces in {*insert use sites from table 8*}].
- [[This product] [It] [is] [ideal] [[designed] [effective] [intended]] for [daily] use on [hard, non-porous [environmental] (inanimate) surfaces] [such as] {*insert surfaces from table 7*}].

**[For Veterinary Use] [For Use in Veterinary clinics [*or insert any of the Veterinary Institutional Use sites from table 4*]]**

- This product [*or product name*] is a one-step<sup>4</sup> [germicidal] [disinfectant] [cleaner] [and] [deodorant] [odor-counteractant] [odor neutralizer] [wipe] [designed] [ideal] [effective] [intended] for [general] [cleaning,] [and] disinfecting, (deodorizing) [of] hard, non-porous [environmental] surfaces.
- [This product] [*or product name*] [It] [ cleans quickly by removing [*insert soil from table 1 or 5*] [found in [Animal] [Premises] [facilities] [such] [as] [*insert use site from table 4*].]]
- [This product [*or product name*] is [designed] [ideal] [effective] [intended] for use on hard, non-porous [environmental] surfaces: [*insert surface material from table 2*] associated with [high] [hand] touch [environmental] surfaces, [including] [such as] [floors<sup>16</sup>], [walls], [ceilings] – [*insert any use site from table 4*] – [or – any hard non-porous [washable] (non-food contact) surface where disinfection is required.]

{**Administrative note:** Note: Parenthesis ( ) or [bracketed text] is optional text, it might not appear on the printed label. Text appearing in {braces} is for administrative purposes only and will not appear on the printed label. Variables such as CAPITALIZATION, plurals or singular, **bold** and *italics* are optional unless specified in 40 CFR. Listed uses and use sites can be used partially or in their entirety. Underlined text is new. ~~Strike-through~~ text means it has been removed.}

- [This product's non-dulling formula eliminates the time and labor normally required for rinsing]. [It [also] reduces odor-causing bacteria leaving surfaces smelling clean and fresh].]
- [This product (Product Name) (is) (are) [designed] [ideal] [effective] [intended] for [cleaning and] disinfection of hard non-porous surfaces in {*insert use sites from table 4*}].
- [[This product] [It] [is] [ideal] [ [designed] [effective] [intended]]] for [daily] use on [hard, non-porous [environmental] (inanimate) surfaces] [such as] {*insert surfaces from table 3*}].

**[For Miscellaneous Use] [For Use [in] [on] [at] [*insert any of the Miscellaneous Institutional Use sites from table 4*]]**

- This product [or product name] is a one-step<sup>4</sup> germicidal [disinfectant] [cleaner] [and] [deodorant] [odor-counteractant] [odor neutralizer] [wipe] [designed] [ideal] [effective] [intended] for [general] [cleaning.] [and] disinfecting, (deodorizing) [of] hard, non-porous [environmental] surfaces.
- [This product] [or product name] [It] [cleans quickly by removing [*use any soil from table 1 or 5*] [found in [*insert any of the Miscellaneous Institutional Use sites from table 4*]].]
- [This product [or product name] is [designed] [ideal] [effective] [intended] for use on hard, non-porous [environmental] surfaces: {*insert any surface material from table 2*} associated with [high] [hand] touch [environmental] surfaces [such as] [including], [floors<sup>16</sup>], [walls], [ceilings] – {*or insert any hard non-porous surface from table 4*} – [ or – any hard non-porous [washable] (non-food contact) surface [where disinfection is required]. ]
- [This product's non-dulling formula eliminates the time and labor normally required for rinsing]. [It [also] reduces odor-causing bacteria leaving surfaces smelling clean and fresh].]
- [This product (Product Name) (is) (are) [designed] [ideal] [effective] [intended] for [cleaning and] disinfection of hard non-porous surfaces in {*insert use sites from table 4*}].
- [[This product] [It] [is] [ideal] [ [designed] [effective] [intended]]] for [daily] use on [hard, non-porous [environmental] (inanimate) surfaces] [such as] {*insert surfaces from table 3*}].

**(For Use (on) (in)) (Spas, (Salons) & (Clinics)) (*insert any of the Professional Beauty Use sites from table 4*) (Surfaces) (and) (Footbaths) (pedicure foot spa equipment) in (health clubs), ((medical) spas), (Tanning salons), (tanning), (hair) (nail) (pedicure) (salons), (barber) (beauty) (shops), (salons), (tattoo parlors) (massage therapy (clinics))):**

- This product [or product name] [These] is [are] [is a] non-woven, [disposable] [towelette[s]] [wipe[s]], pre-saturated with citric acid [based] disinfectant [cleaner].
- [This product [or product name] is a one-step<sup>4</sup> [hospital-use] [germicidal] [disinfectant] [cleaner], [\*virucide] [and] [deodorant] [odor-counteractant] [odor neutralizer] [wipe] [designed] [ideal] [effective] [intended] for cleaning, [and] disinfecting, [and] (deodorizing) [on] [of] hard, non-porous surfaces.
- [This product] [It] cleans quickly by removing [body oils], [dead tissue], [soil] [*insert soil from table 1 or 5*] [and all other buildups or organic matter] [found] [on] [ [hard non-porous (inanimate) [environmental]] [footbath] [surfaces.]]
- [This product (Product Name) (is) (are) [designed] [ideal] [effective] [intended] for [cleaning and] disinfection of hard non-porous surfaces in {*insert professional beauty use sites from table 4*}]
- [It] [is] [designed] [ideal] [effective] [intended] for [daily] use on [hard, non-porous environmental (inanimate) surfaces] [such as] {*insert professional beauty surfaces from table 3*}

{*Administrative note:* Note: Parenthesis ( ) or [bracketed text] is optional text, it might not appear on the printed label. Text appearing in {braces} is for administrative purposes only and will not appear on the printed label. Variables such as CAPITALIZATION, plurals or singular, **bold** and *italics* are optional unless specified in 40 CFR. Listed uses and use sites can be used partially or in their entirety. Underlined text is new. ~~Strike-through~~ text means it has been removed.}

**[For] [Use on] [Disinfection of] [Surfaces] [in] [Pharmaceutical] [and] [Compounding] [Processing] Facilities {or insert institutional use site from table 4}:**

- [This product [or product name] is [ [designed] [ideal] [effective] [intended]] for use on hard, non-porous [environmental] surfaces such as [floors<sup>16</sup>], [walls] [and] [processing equipment] in [pharmaceutical] [and] [cosmetic] [compounding] [processing] facilities {or insert use site from table 4}.
- This product [These] is [are] [is a] non-woven, [disposable] [towelette[s]] [wipe[s]], pre-saturated with citric acid [based] disinfectant cleaner.
- [This product [or product name] is a one-step<sup>4</sup> [hospital-use] [germicidal] [disinfectant] [cleaner], [\*virucide] [and] [deodorant] [odor-counteractant] [odor neutralizer] [wipe] [designed] [ideal] [effective] [intended] for cleaning, [and] disinfecting, [and] (deodorizing) [on] [of] hard, non-porous surfaces. It cleans quickly by removing body oils, dead tissue, soil and all other buildups or organic matter [found] on [hard non-porous (inanimate) [environmental]] [surfaces.]
- [This product (Product Name) (is) (are) [designed] [ideal] [effective] [intended] for cleaning and disinfection of hard non-porous surfaces in {insert use sites from table 4}]
- [It is [designed] [ideal] [effective] [intended] for [daily] use on [hard, non-porous environmental (inanimate) surfaces] [such as] {insert surfaces from table 3}]

**[For Use in] Mold & Mildew Remediation [& Restoration]<sup>2</sup>:**

- This product is ideal for use as a [cleaner], [disinfectant] and [deodorizer] in {insert mold/mildew remediation use site from table 4}. Surfaces must be removed of visible soils and pre-cleaned prior to disinfection. [This product was [designed] [ideal] [effective] [intended] to leave surfaces clean and odor free.]
- [This product [or product name] kills the growth of mold and mildew and the odors caused by [associated to] them on hard, non-porous surfaces [such as [sealed] [concrete] [floors<sup>16</sup>], [sealed walls]; [sealed drywall] [and] [gypsum board], [tabletops<sup>2</sup>], [bench-tops<sup>2</sup>], [drain troughs], [drip pans], [desks], [locker room benches], [and] [hard non-porous bath mats (e.g., rubber or plastic).] {or insert institutional/miscellaneous surface from table 3}]. Surfaces must be removed of visible soils and pre-cleaned prior to disinfection.]
- Surfaces [and equipment] must be removed of visible soils and pre-cleaned prior to disinfection. {Note to reviewer: The pre-cleaning statement would always be used when any of the following bullet points are put on the product label}
- [For Use in] [Water/Flood Damage]: [This product] [or product name] kills the growth of mold and mildew, fungi, and bacteria, and [reduces] [removes] the odors caused by them on hard, non-porous surfaces as a result of water and flood damage
- [For Use in] [Sewage Backflow]: [This product] [or product name] is a broad-spectrum [cleaner] [and] [deodorizer] that kills [reduces] [removes] (non-public health) (odor causing) organisms left on hard, non-porous surfaces previously contaminated with raw sewage and black water contamination.
- [For Use in] [Trauma, Crime Scene, and Fire Clean Up]: [OSHA Bloodborne Pathogen Standard Compliance. This product effectively cleans and disinfects<sup>3</sup> hard, non-porous surfaces and equipment that come into contact with blood and other potentially infectious materials (OPIM).
- [[For Use in] Equipment and PPE Disinfection (Non-Critical Devices)]: [To aid in the reduction of cross contamination between treated hard, non-porous surfaces±, this product is effective for cleaning and disinfecting reusable person protective equipment (PPE), [gear], [tools], and [restoration] [equipment] {or insert surface from table 3} after removal from containment areas.



{*Administrative note*: Note: Parenthesis ( ) or [bracketed text] is optional text, it might not appear on the printed label. Text appearing in {braces} is for administrative purposes only and will not appear on the printed label. Variables such as CAPITALIZATION, plurals or singular, **bold** and *italics* are optional unless specified in 40 CFR. Listed uses and use sites can be used partially or in their entirety. Underlined text is new. ~~Strike through~~ text means it has been removed.}

- [For Use on] HVAC [hard non-porous surfaces of HVAC/R equipment]: [This product is suitable for hard, non-porous exterior surfaces of HVAC/R equipment, air conditioning equipment, refrigeration equipment and heat pumps. Allow surfaces to come to room temperature [prior to treatment]]

**[For] [Use in] [Greenhouse] [and] [Horticulture] [Facilities] [Use]**

- For use to disinfect (and clean) (environmental) hard non-porous (inanimate) surfaces [:] [such as] [including] (floors<sup>16</sup>), (walls), (glasshouse structures), (ventilation<sup>1</sup>) and (other) (equipment), (utensils), (trays), and (other) (containers), (water systems<sup>1</sup>), (evaporative coolers), (storage rooms), and (vehicles) in (greenhouses) and (other horticultural settings) {*or insert horticultural use site/surface from table 4 or table 3*} (prior) (to) (introduction) or (reintroduction) of (plants), (seeds), or (soil)
- [This product [*or product name*] is a one-step<sup>3</sup> [germicidal] disinfectant [cleaner] [and deodorant] designed for [general] cleaning, [and] disinfecting, (deodorizing) of hard, non-porous [environmental] surfaces<sup>3</sup>.]
- [It cleans quickly by removing {*use any soil from table 1*} found in {*insert use sites from table 4*}. This product [*or product name*] is designed for use on hard, non-porous [environmental] surfaces [such as] [including] {*insert hard non-porous surface use site from table 4 or institutional surfaces from table 3*}

{**Administrative note:** Note: Parenthesis ( ) or [bracketed text] is optional text, it might not appear on the printed label. Text appearing in {braces} is for administrative purposes only and will not appear on the printed label. Variables such as CAPITALIZATION, plurals or singular, **bold** and *italics* are optional unless specified in 40 CFR. Listed uses and use sites can be used partially or in their entirety. Underlined text is new. Strike-through text means it has been removed.}

#### **{Claims against Emerging Viral Pathogens}**

*This product qualifies for emerging viral pathogen claims per the EPA's 'Guidance to Registrants: Process for Making Claims Against Emerging Viral Pathogens not on EPA-Registered Disinfectant Labels' when used in accordance with the appropriate use directions indicated below.*

*This product meets the criteria to make claims against certain emerging viral pathogens from the following viral categories:*

- Enveloped Viruses
- Large, Non-enveloped viruses
- Small, Non-enveloped viruses

<i>For an emerging viral pathogen that is a/an...</i>	<i>...follow the directions for use for the following organisms on the label:</i>
Enveloped virus	Poliovirus type 1 Feline Calicivirus as a surrogate virus for Norovirus, Strain F-9
Large non-enveloped virus	Poliovirus type 1 Feline Calicivirus as a surrogate virus for Norovirus, Strain F-9
Small non-enveloped virus	Poliovirus type 1

*The statements shall be made only through the following communications outlets: technical literature distributed exclusively to health care facilities, physicians, nurses and public health officials, "1-800" consumer information services, social media sites and company websites (non-label related). These statements shall not appear on marketed (final print) product labels.}*

*[Product name] has demonstrated effectiveness against viruses similar to [name of emerging virus] on hard, non-porous surfaces. Therefore, [product name] can be used against [name of emerging virus] when used in accordance with the directions for use against Poliovirus type 1 on hard non-porous surfaces. Refer to the [CDC or OIE] website at [pathogen-specific website address] for additional information.*

*{Or}*

*[Name of illness/outbreak] is caused by [name of emerging virus]. [Product name] kills similar viruses and therefore can be used against [name of emerging virus] when used in accordance with the directions for use against Poliovirus type 1 on hard, non-porous surfaces. Refer to the [CDC or OIE] website at [website address] for additional information.*

*{Note to Reviewer: ATCC numbers are optional and might not appear on the final label. The contact times on the product labels would be 1 minute for bacteria, fungi, and viruses; and 3 minutes for Aspergillus brasiliensis. The contact times mentioned in the below efficacy tables are the actual exposure time at which the testing was conducted.}*

*{Note to Reviewer: Organisms claimed may utilize a longer contact time on the marketed label than appears on the EPA master label (i.e., a 54 second contact time may be increased to 5 minutes)}*

#### **{Organism Claims} {Efficacy Claims} {Claims}**

\*VIRUCIDAL: 1 MINUTE  
BACTERICIDAL: 1 MINUTE

{*Administrative note*: Note: Parenthesis ( ) or [bracketed text] is optional text, it might not appear on the printed label. Text appearing in {braces} is for administrative purposes only and will not appear on the printed label. Variables such as CAPITALIZATION, plurals or singular, **bold** and *italics* are optional unless specified in 40 CFR. Listed uses and use sites can be used partially or in their entirety. Underlined text is new. ~~Strike-through~~ text means it has been removed.}

FUNGICIDAL: 1 MINUTE  
TUBERCULOCIDAL: 1 MINUTE  
[NON-FOOD CONTACT] SANITIZER: 10 SECONDS  
MILDEWCIDAL: 3 MINUTES

BACTERICIDAL [Kills] [(is) Effective Against] [Bacteria] [in 1 minute] [against]:

[Bacteria] [Bactericidal] (Activity):	Contact Time
<i>Acinetobacter baumannii</i> (ATCC BAA-1 709)	54 seconds
<i>Bordetella pertussis</i> (ATCC 12743)	54 seconds
<i>Burkholderia cepacia</i> (ATCC 25416)	54 seconds
<i>Campylobacter jejuni</i> (ATCC 29428)	54 seconds
<i>Enterococcus faecalis</i> (Vancomycin Resistant [VRE]) (ATCC 51575)	54 seconds
<i>Enterococcus faecium</i> (ATCC 51559)	54 seconds
<i>Escherichia coli</i> O157:H7 (ATCC 35150)	54 seconds
<i>Escherichia coli</i> (Extended Spectrum $\beta$ -lactamase [ESBL] [producing] [positive]) (ATCC BAA-196)	54 seconds
<i>Klebsiella aerogenes</i> (ATCC 13048)	54 seconds
<i>Klebsiella pneumoniae</i> (ATCC 4352)	1 minute
<i>Listeria monocytogenes</i> (ATCC 19117)	54 seconds
<i>Mycoplasma orale</i> (ATCC 15539)	54 seconds
<i>Proteus vulgaris</i> (ATCC 9920)	54 seconds
<i>Pseudomonas aeruginosa</i> (ATCC 15442)	54 seconds
<i>Salmonella enterica</i> (formerly known as <i>Salmonella choleraesuis</i> ) (ATCC 10708)	54 seconds
<i>Staphylococcus aureus</i> (ATCC 6538)	54 seconds
<i>Staphylococcus aureus</i> (Methicillin Resistant [MRSA]) (ATCC 33592)	54 seconds
<i>Staphylococcus aureus</i> (Vancomycin Resistant [VRSA]) (NARSA VRS1)	54 seconds
<i>Staphylococcus aureus</i> (Vancomycin Intermediate Resistant [VISA]) (CDC HIP 5836)	54 seconds
<i>Streptococcus pneumoniae</i> (ATCC 6305)	54 seconds
<i>Streptococcus pyogenes</i> (ATCC 19615)	54 seconds

\*VIRUCIDAL [Kills] [(is) Effective Against] [enveloped and non-enveloped] [\*Viruses] [in 1 minute] [against]:

[*Viruses] [*Virucidal] (Activity):	Contact Time
Adenovirus Type 8	54 seconds
Cytomegalovirus	54 seconds
Feline Calicivirus [(ATCC VR-782)]	54 seconds
Hepatitis B Virus (HBV) (Duck Hepatitis B Virus as the surrogate)	54 seconds
Hepatitis C Virus (HCV) (Bovine Viral Diarrhea virus as the surrogate)	54 seconds
Herpes Simplex Virus, Type 1 (HSV-1)	54 seconds
Herpes Simplex Virus, Type 2 (HSV-2)	54 seconds
HIV Type 1 (Strain HTLV III <sub>B</sub> )	54 seconds
Human coronavirus	54 seconds
Influenza A virus	54 seconds
Influenza B virus	54 seconds
Norovirus (Feline Calicivirus as the surrogate)	54 seconds
Poliovirus Type 1 (Strain Chat)	54 seconds
Respiratory Syncytial Virus (RSV)	54 seconds
Rhinovirus Type 37	54 seconds
Rotavirus (Strain WA)	54 seconds
<sup>7</sup> SARS-Related Coronavirus 2 [SARS-CoV-2 (the virus that causes COVID-19)] [SARS-CoV-2] [USA-WA1/2020] [BEI NR-52281]	54 seconds
Vaccinia virus	54 seconds

FUNGICIDAL [Kills] [(is) Effective Against] [Fungi] [in 1 minute] [against]:

[Fungi] [Fungicidal] (Activity):	Contact Time
----------------------------------	--------------

{**Administrative note:** Note: Parenthesis ( ) or [bracketed text] is optional text, it might not appear on the printed label. Text appearing in {braces} is for administrative purposes only and will not appear on the printed label. Variables such as CAPITALIZATION, plurals or singular, **bold** and *italics* are optional unless specified in 40 CFR. Listed uses and use sites can be used partially or in their entirety. Underlined text is new. Strike-through text means it has been removed.}

<i>Trichophyton interdigitale</i> (formerly known as <i>Trichophyton mentagrophytes</i> ) (Athlete's foot fungus) (Athlete's foot and nail fungus) (ATCC 9533)	1 minute
<i>Candida albicans</i> (ATCC 10231)	54 seconds
<i>Candida auris</i> (CDC AR-0385)	54 seconds

[Mold/Mildew] (Mildewcidal [Activity]) [in 3 minutes] [effective] [against]– [kills the growth of mold and mildew (at a 3 minute contact time): *Aspergillus brasiliensis* (formerly known as *Aspergillus niger*) (ATCC 16404) and the odors caused by them when applied to hard, non-porous environmental surfaces]

[Mold/Mildew] (Mildewcidal Activity)	Contact Time
<i>Aspergillus brasiliensis</i> (formerly known as <i>Aspergillus niger</i> ) (ATCC 16404)	2 minutes 54 seconds

TUBERCULOCIDAL [Kills] [Effective Against] [in 1 minute] [against]:

[Tuberculocidal] (Activity)	Contact Time
<sup>16</sup> <i>Mycobacterium bovis</i> (BCG) [TB] (ATCC 35743)	54 seconds

[NON-FOOD CONTACT] SANITIZER [in 10 seconds] [against]:

[Sanitizing] (Activity) [Non-Food Contact Surface Sanitizer]:	Contact Time
<i>Staphylococcus aureus</i> (ATCC 6538)	10 seconds
<i>Klebsiella aerogenes</i> (ATCC 13048)	10 seconds

#### **DIRECTIONS FOR USE:**

It is a violation of Federal Law to use this product in a manner inconsistent with its labeling.

Not for personal cleansing. This is not a baby wipe. Do not flush in toilet. Use additional towelettes if needed to ensure the correct wet contact time

{*Note to reviewer: The following paragraph will be used on labels that list medical devices as defined by the FDA.*}

This product is not to be used as a terminal sterilant/high level disinfectant on any surface or instrument that (1) is introduced directly into the human body, either into or in contact with the blood stream or normally sterile areas of the body, or (2) contacts intact mucous membranes but which does not ordinarily penetrate the blood barrier or otherwise enter normally sterile areas of the body. This product may be used to pre-clean or decontaminate critical or semi-critical medical devices prior to sterilization or high-level disinfection.

#### **For Use as [a] [Daily] [One-Step] [Cleaner/] Disinfectant [product]:**

1. Pre-clean visibly soiled areas.
2. [Pull] [Remove] towelette [cloth] from [dispenser] [canister] [tub] and] wipe hard, non-porous [environmental] surfaces [or] [floors<sup>16</sup>].
3. Allow surface(s) [to] remain visibly wet for 1 minute<sup>15</sup>.
4. [Wipe] [surfaces dry] [or rinse]. [or] [Allow to air dry]. [or] [Let air dry]. [If streaking is observed, wipe with a clean, damp [cloth or] [microfiber cloth or] [paper towel]].

#### **For Use as [a] [Daily] [Bathroom] [Restroom] [Shower Rooms] [Locker Rooms] [Athletic Equipment] [One-Step] Cleaner/Disinfectant:**

1. Pre-clean visibly soiled areas.
2. [Pull] [Remove] towelette [cloth] from [dispenser] [canister] [tub] and] wipe hard, non-porous surfaces [or] [floors<sup>16</sup>].
3. Allow surface(s) to remain visibly wet for 1 minute<sup>15</sup>.
4. [Wipe surfaces dry] [or] [rinse] [allow to air dry]. [Let air dry]. [If streaking is observed, wipe with a clean, damp [cloth or] [microfiber cloth or] [paper towel]].

#### **For Use as a Cleaner/Disinfectant in non-food handling areas of Food Establishments [Food Processing Plants]:**

1. Pre-clean visibly soiled areas.
2. [Pull] [Remove] towelette from [dispenser] [canister] [tub] and wipe hard, non-porous surfaces.
3. Allow surface(s) to remain visibly wet for 1 minute<sup>15</sup>.

{*Administrative note:* Note: Parenthesis ( ) or [bracketed text] is optional text, it might not appear on the printed label. Text appearing in {braces} is for administrative purposes only and will not appear on the printed label. Variables such as CAPITALIZATION, plurals or singular, **bold** and *italics* are optional unless specified in 40 CFR. Listed uses and use sites can be used partially or in their entirety. Underlined text is new. ~~Strike through~~ text means it has been removed.}

4. Wipe [surfaces dry] [or rinse] [or allow to air dry]. [If streaking is observed, wipe with a clean, damp [cloth or] [microfiber cloth or] [paper towel]].

**For Use as a [Cleaner/] Disinfectant in Food Establishments [Food Processing Plants]:**

1. Pre-clean visibly soiled areas.
2. [Pull] [Remove] towelette from [dispenser] [canister] [tub] and wipe hard, non-porous surfaces.
3. Allow surface(s) to remain visibly wet for 1 minute<sup>15</sup>.
4. Wipe [surfaces dry] [or rinse] [or allow to air dry]. [If streaking is observed, wipe with a clean, damp [cloth or] [microfiber cloth or] [paper towel]].

**For Use as a [Bowl] Cleaner/Disinfectant [in] [on] Exterior Surfaces of Toilet Bowls [Dry/Vacuum Flush Toilets] [Dry/waterless Urinals]:**

1. Pre-clean visibly soiled areas.
2. [Pull] [Remove] towelette from [dispenser] [canister] [tub] and wipe exterior surfaces of toilet bowls, [Dry/Vacuum Flush Toilets], [Dry/waterless Urinals].
3. Wipe entire surface area, especially under the rim. Allow [the] surface(s) to remain visibly wet for one (1) minute<sup>15</sup>.

**For Use to Clean and Disinfect Bathtub and Shower Stalls:**

1. Pre-clean visibly soiled areas.
2. [Pull] [Remove] towelette from [dispenser] [canister] [tub] and wipe hard non-porous surfaces.
3. Allow surface(s) to remain visibly wet for 1 minute<sup>15</sup>.
4. Rinse surfaces thoroughly and let air dry.

**For Use to Clean and Disinfect Manikins Used in CPR Training:**

1. Manikins should be cleaned as soon as possible at the end of each class to avoid drying of contaminants on surfaces. Disassemble the manikin as directed by manufacturer's instructions.
2. Wipe all hard, non-porous surfaces (of manikins) with this product [or *product name*] until visibly wet.
3. Allow surfaces to remain visibly wet for 1 minute<sup>15</sup> and rinse with potable water.

**To Disinfect Surfaces in Pharmaceutical [and Cosmetic] Processing Facilities:**

1. Pre-clean visibly soiled areas.
2. [Pull] [Remove] towelette from [dispenser] [canister] [tub] and wipe hard non-porous surfaces.
3. Allow surface(s) to remain visibly wet for 1 minute<sup>15</sup>.
4. Rinse with sterile water.
5. [Wipe surfaces dry (or rinse). (If streaking is observed, wipe with a clean, damp [cloth or] [microfiber cloth or] [paper towel]). (Allow to air dry [Let air dry]).]

**To Disinfect Non-Critical<sup>6</sup>, Pre-cleaned Instruments:**

1. Instruments must be thoroughly pre-cleaned to remove excess organic debris, rinsed, and rough dried.
2. (Clean and rinse lumens of hollow instruments before wiping with this product [or product name]).
3. Wipe all hard non-porous surfaces of instruments [with this product] {or product name} until thoroughly wet.
4. Allow surfaces to remain visibly wet for 1 minute<sup>15</sup> [at room temperature].
5. [Wipe surfaces dry (or rinse). (If streaking is observed, wipe with a clean, damp [cloth or] [microfiber cloth or] [paper towel]). (Allow to air dry [Let air dry]).].

**For use as a disinfectant, on hard, non-porous (inanimate) (environmental) surfaces of [non-circulating] [pipe-less] footbaths (pedicure foot spa equipment):**

1. **Drain:** Drain the water (from) (the unit) (foot spa) (basin) (bowl) and remove any visible debris.
2. **Clean:** Thoroughly clean all hard, non-porous (inanimate) (environmental) surfaces with this product [or product name] [or soap/detergent], then rinse with water and drain.
3. **Apply:** Pull towelettes from [dispenser] [canister] and wipe all hard non-porous (inanimate) (environmental) surfaces: All surfaces must remain visibly wet for one [1] minute<sup>15</sup>.
4. **[Drain and] Rinse:** All [(cleaned) (treated)] hard, non-porous surfaces with fresh water.

{*Administrative note:* Note: Parenthesis ( ) or [bracketed text] is optional text, it might not appear on the printed label. Text appearing in {braces} is for administrative purposes only and will not appear on the printed label. Variables such as CAPITALIZATION, plurals or singular, **bold** and *italics* are optional unless specified in 40 CFR. Listed uses and use sites can be used partially or in their entirety. Underlined text is new. ~~Strike-through~~ text means it has been removed.}

[Note: Change towelettes frequently to avoid re-deposition of soil.]

**[For Use to Clean and Disinfect] [For Use on] Life Science [Laboratory] [Surfaces], [Instruments], [Equipment] [and] [Glassware]:**

1. Pre-clean visibly soiled areas.
2. [Pull] [Remove] towelette from [dispenser] [canister] [tub] and wipe surfaces.
3. Allow surface(s) [to] remain visibly wet for 1 minute<sup>15</sup>.
4. [For glassware/instrument: Wipe surface thoroughly and let air dry before reuse.] [For surfaces: Wipe [surfaces dry] [or] [rinse] [allow to air dry]. [If streaking is observed, wipe with a clean, damp [cloth or] [microfiber cloth or] [paper towel]].

**[[For] Use in] Mold Remediation:**

1. Pre-clean surfaces. [by] Follow[ing] the cleaner instructions [listed [above] [below].]
2. Repair the source of moisture (stop leaks, etc) to eliminate conditions favorable to mold growth such as moisture ingress and high relative humidity and to prevent further mold growth and/or re-growth.
3. [Pull] [Remove] towelette from dispenser [canister] [tub] and wipe the wall with a clean cloth wetted with clean water or with this product [or product name]. Dispose of the cleaning cloth in a well-sealed plastic bag.
4. Wipe the contaminated hard, non-porous surfaces with this product [or product name].
5. Allow to remain visibly wet for 3 minutes.
6. Allow [Let] to air dry [or wipe surface dry] [or rinse]. [If streaking is observed wipe with a clean damp [cloth or] [microfiber cloth or] [paper towel]].

**To Kill [or] [control] Mold and Mildew [for Remediation and Restoration]:**

1. Pre-clean surfaces. [by] Follow[ing] the cleaner instructions [listed [above] [below].]
2. [Pull] [Remove] towelette from [dispenser] [canister] [tub] and wipe product onto hard, non-porous surfaces until completely wet.
3. Allow the surface to remain visibly wet for 3 (three) minutes.
4. Allow [Let] to air dry [or wipe surface dry] [or rinse]. [If streaking is observed wipe with a clean damp [cloth or] [microfiber cloth or] [paper towel]].
5. Repeat application weekly or when growth reappears.

**For use as a [Non-Food Contact] Sanitizer:**

1. Pre-clean visibly soiled areas.
2. [Pull] [Remove] towelette from [dispenser] [canister] [tub] and wipe hard, non-porous [environmental] surfaces.
3. Allow the surface to remain visibly wet for 10 seconds.
4. [Wipe surfaces dry (or rinse)]. (If streaking is observed, wipe with a clean, damp [cloth or] [microfiber cloth or] [paper towel].) (Allow to air dry) [Let air dry.]

**[For Use [in] [as a Cleaner/Disinfectant in]] Animal Housing Facilities [including Veterinary Clinics, [Equine] Farms, Livestock, Swine and Poultry Houses]: For cleaning and disinfecting the following hard, non-porous surfaces: feeding and watering equipment, utensils, instruments, cages, kennels, stables, catteries, etc.**

**{or}**

**[For Use [in] [as a Disinfectant[/Cleaner] in] Animal Housing [Areas] [Facilities] [in] [Including] [such as] {insert veterinary use site from Table 4}:**

1. Remove all animals and feeds from premises, animal transportation vehicles, crates, etc.
2. Remove all litter, [droppings] and [manure] [fecal matter] from floors<sup>16</sup>, walls and surfaces of facilities [including pens, chutes, and barns] occupied [or] [traversed] by animals.
3. Empty all [troughs], [racks], [and] [other] feeding or watering appliances.
4. Thoroughly clean all surfaces with soap and detergent and rinse with potable water. [Pull] [Remove] towelette from [dispenser] [canister] [tub] and wipe hard, non-porous [environmental] surfaces.
5. All surfaces must remain visibly wet for 1 minute<sup>15</sup>.
6. Allow to air dry [or rinse [with potable water if necessary]].

{**Administrative note:** Note: Parenthesis ( ) or [bracketed text] is optional text, it might not appear on the printed label. Text appearing in {braces} is for administrative purposes only and will not appear on the printed label. Variables such as CAPITALIZATION, plurals or singular, **bold** and *italics* are optional unless specified in 40 CFR. Listed uses and use sites can be used partially or in their entirety. Underlined text is new. ~~Strike-through~~ text means it has been removed.}

7. [Ventilate buildings and other closed spaces.].
8. [Do not house animals or employ equipment until treatment has been absorbed, set or dried.].
9. Thoroughly scrub all [treated] [feed racks], [mangers], [troughs], [automatic feeders], [fountains], [food contact equipment] and [waterers] with soap [or] [/] detergent, and rinse with potable water before reuse.

**For Use as a Cleaner [and/or Deodorizer]:**

1. [Pull] [Remove] towelette from [dispenser] [canister] [tub] and wipe hard, non-porous [environmental] surfaces.
2. Allow to air dry [or rinse].

**For Use as a [General] Cleaner/Degreaser:**

1. [Pull] [Remove] towelette from [dispenser] [canister] [tub] and wipe hard, non-porous [environmental] surfaces.
2. Allow to air dry [or rinse].

**GENERAL CLEANING:** [Instructions will be shown with icons depicting the use of Citri-1 Wipes (or alternate brand name) system].

1. Wipe floor with cloth and allow floor to dry.
2. Cleaning steps: [Attach], [Mop], [Toss]
3. Scrubbing Strip usage: [Flip to scrub]
4. Use scrubbing strip to remove tough spots [from dried-on food to scuffs].

**[For Use [in] [as a Disinfectant [/Cleaner] in]] Poultry Houses and Poultry Hatcheries:**

For cleaning and disinfecting the following hard non-porous surfaces: {*insert veterinary use site from Table 4*}

1. Remove all poultry and feeds from premises, [trucks, coops, and crates].
2. Remove all litter and droppings from floors<sup>16</sup>, walls and surfaces of facilities occupied (or traversed) by poultry.
3. Empty all [troughs], [racks], [and other] feeding and watering appliances.
4. Thoroughly clean all surfaces with soap and detergent and rinse with potable water.
5. [Pull] [Remove] towelette from dispenser [canister] [tub] and wipe hard, non-porous [environmental] surfaces.
6. All surfaces must remain visibly wet for 1 minute<sup>15</sup>.
7. Allow to air dry [or rinse [with potable water if necessary]].
8. [Ventilate buildings, coops, and other closed spaces.]
9. [Do not house poultry or employ equipment until treatment has been absorbed, set, or dried.]
10. Thoroughly scrub [treated] [feed racks], [troughs], [automatic feeders], [fountains], and [waterers] [food contact equipment] with soap or detergent, and rinse with potable water before reuse.

**For Cleaning and Disinfection of [Veterinary Clinics] [or insert veterinary use site from table 4]:**

[For cleaning and disinfecting of hard non-porous surfaces (and equipment)]

1. Pre-clean visibly soiled areas.
2. [Pull] [Remove] towelette from dispenser [canister] [tub] and wipe hard, non-porous environmental surfaces.
3. Allow surface[s] to remain visibly wet for 1 minute<sup>15</sup>.
4. (Wipe surfaces dry) (or rinse). (If streaking is observed, wipe with a clean, damp [cloth or] [microfiber cloth or] [paper towel]). (Allow to air dry [Let air dry]).
5. Rinse waterers and feeders with potable water before reuse.

**For Use in Facilities used for [Temporary] Confinement of Animals:**

[Use this product {*or product name*} to clean and disinfect (inanimate) hard, non-porous surfaces associated with facilities used for the temporary confinement of animals.] [Sites may include, but are not limited to, barns, sheds, stables, pens, cages, and associated access alleys or walkways.] [The product {*or product name*} may also be used to clean and disinfect equipment related to the maintenance of animals found at fairs, exhibitions, animal auction yards, animal show/boarding facilities, or other similar agricultural facilities designed for temporary housing of animals.]

1. Pre-clean visibly soiled surfaces and rinse with water.
2. [Pull] [Remove] towelette from dispenser [canister] [tub] and wipe all hard, non-porous surfaces with this product {*or product name*}.
3. Allow product {*or product name*} to remain in contact with surfaces for 1 minute<sup>15</sup>.
4. [Wipe surfaces dry (or rinse). (If streaking is observed, wipe with a clean, damp [cloth or] [microfiber cloth or] [paper towel])]. [Allow to air dry]. [Let air dry].

{*Administrative note:* Note: Parenthesis ( ) or [bracketed text] is optional text, it might not appear on the printed label. Text appearing in {braces} is for administrative purposes only and will not appear on the printed label. Variables such as CAPITALIZATION, plurals or singular, **bold** and *italics* are optional unless specified in 40 CFR. Listed uses and use sites can be used partially or in their entirety. Underlined text is new. ~~Strike-through~~ text means it has been removed.}

**For Cleaning and Disinfection of Vehicle Cabins [Cabs] [or insert use site from table 4]:**

[To disinfect non-porous, hard surfaces of vehicle cabins [cabs]] [or insert use site from table 4]:

1. Pre-clean visibly soiled areas.
2. Pull [Remove] towelette [cloth] from dispenser [canister] [tub] and wipe hard, non-porous [environmental] surfaces.
3. Allow surface(s) [to] remain visibly wet for 1 minute<sup>15</sup>.
4. [Wipe] [surfaces dry] [or rinse]. [Allow to air dry] [Let air dry]. [If streaking is observed, wipe with a clean, damp [cloth or] [microfiber cloth or] [paper towel]].

**To Clean and Disinfect [Barber] [and] [Beauty] [/Manicure] [Hair] Tools [and Instruments].**

1. Pre-clean visibly soiled items.
2. [Pull] [Remove] towelette from dispenser [canister] [tub] and wipe all hard, non-porous surfaces of pre-cleaned [combs], [brushes], [scissors], [clipper blades], [razors], [manicure implements] [and other] non-porous instruments with this product [or product name] until thoroughly wet<sup>12</sup>.
3. Allow surfaces to remain visibly wet for 1 minute<sup>15</sup>.
4. [Rinse the surfaces thoroughly with water.]
5. Let air dry before reuse.

**For Use to Disinfect (inanimate) (environmental) hard, non-porous surfaces associated with Aquaculture [including] [vehicles], [and] [other similar equipment]:**

1. Remove all feed from premises or vehicles.
2. Remove excess debris.
3. [Pull towelette from dispenser [canister] [tub] and] wipe all [washable] hard, non-porous [environmental] surfaces until (thoroughly) wet.
4. Allow surfaces to remain visibly wet for one (1) minute<sup>15</sup>.
5. Rinse the surfaces thoroughly with water.
6. Allow to [Let] air dry [or wipe dry].

**To [Clean and] Disinfect Handheld Massage Equipment, [including massage stones and cups]:**

1. Pre-clean visibly soiled items.
2. [Pull] [Remove] towelette from dispenser [canister] [tub] and wipe all hard, non-porous surfaces of pre-cleaned handheld massage equipment, including massage stones and cups until thoroughly wet.
3. Allow surfaces to remain visibly wet for 1 minute<sup>15</sup>.
4. [Rinse the surfaces thoroughly with water.] [and] [Allow to air dry]. [Store in a clean and closed container.]

**For use as a disinfectant, on hard, non-porous (inanimate) (environmental) surfaces of [non-circulating] [and] [circulating] footbaths [and (pedicure foot spa equipment)]:**

1. Drain: Drain the water (from) (the unit) (foot spa) (basin) (bowl) and remove any visible debris.
2. Clean: Thoroughly clean all hard, non-porous (inanimate) (environmental) surfaces with this product [or product name], then rinse with water and drain.
3. Apply: [Pull towelettes from dispenser [canister] [tub] [and] Wipe all hard non-porous (inanimate) (environmental) surfaces [with the wipe]. Allow surface(s) to remain visibly wet for one [1] minute<sup>15</sup>.
4. Rinse: [(cleaned) (treated)] Surfaces with fresh water.

**{Cleaning and General Use}**

General [Kitchen<sup>1</sup> Bathroom] Cleaning: [Remove cooking ingredients and cooked food from areas to be cleaned.] Directly apply this product [-or- product name] to completely wet surface and wipe clean. No rinsing needed. Repeat for visibly soiled areas. For stubborn stains or visibly soiled areas or tougher jobs, allow product to penetrate [dirt] before wiping.

To Clean/Remove Soap Scum: Directly apply this product [or product name] to completely wet surface and wipe clean. No rinsing necessary. Repeat for visibly soiled areas. For stubborn stains or visibly soiled areas or tougher jobs, allow



{**Administrative note:** Note: Parenthesis ( ) or [bracketed text] is optional text, it might not appear on the printed label. Text appearing in {braces} is for administrative purposes only and will not appear on the printed label. Variables such as CAPITALIZATION, plurals or singular, **bold** and *italics* are optional unless specified in 40 CFR. Listed uses and use sites can be used partially or in their entirety. Underlined text is new. ~~Strike through~~ text means it has been removed.}

product to penetrate [dirt -and/or- soap scum] before wiping. For best results, use regularly to prevent dirt and soap scum build up.

To Clean [Non-Porous] Surfaces: Directly apply this product [*or product name*] to completely wet surface and wipe clean. No rinsing needed. Repeat for visibly soiled areas. For stubborn stains or visibly soiled areas or tougher jobs, allow product to penetrate [dirt] before wiping.

{**Deodorization**}

To Deodorize: Wipe hard, non-porous surface until completely wet. {*or*} Apply [this product -or- product name] to completely wet all surfaces. Let stand for 1 minute [to kill odor causing [bacteria] [microorganisms] [organisms]]. Allow to air dry [*or* rinse]. For visibly soiled areas, a pre-cleaning is required. [If streaking is observed, wipe with a clean, damp [cloth *or*] [microfiber cloth *or*] [paper towel].]

\*KILLS HIV-1 HBV, AND HCV ON PRE-CLEANED ENVIRONMENTAL SURFACES/OBJECTS PREVIOUSLY SOILED WITH BLOOD/BODY FLUIDS in [health care settings] [Hospitals, Nursing Homes, Dental Clinics] [and] [other] [settings] in which there is an expected likelihood of soiling of inanimate surfaces/objects with blood/body fluids, and in which the surfaces/objects likely to be soiled with blood/ body fluids can be associated with the potential for transmission of Human Immunodeficiency Virus Type 1 (HIV-1) (associated with AIDS), Hepatitis B Virus (HBV), or Hepatitis C Virus (HCV).

SPECIAL INSTRUCTIONS FOR CLEANING AND DECONTAMINATION AGAINST HIV-1 OR HBV ON SURFACES/OBJECTS SOILED WITH BLOOD/BODY FLUIDS:

Personal Protection: Disposable latex or vinyl gloves, gowns, face masks, and eye coverings must be worn during all cleaning of body fluids, blood, and decontamination procedures.

Cleaning Procedures: Blood/body fluids must be thoroughly cleaned from surfaces and objects before application of this product.

Contact Time: Allow surface to remain visibly wet for 1 minute.

Disposal of Infectious Material: Cleaning materials used that may contain blood/body fluids must be autoclaved and disposed of according to Federal, State, and local regulations for infectious waste disposal.

**{Packaging Related Statements – Appropriate language will be selected from this list, depending on packaging.**

{*For canisters, tubs and buckets*}

To open the package [To pull wipes through lid]: Remove lid. [Then remove and discard induction seal [from the [canister] [tubs] [buckets]]. Pull out corner of first sheet [wipe] from center of roll and push ½" to ¾" (1 to 2 cm) through "X" opening on lid. DO NOT push finger through opening. Replace lid and pull wipe at an angle. The next sheet pops up automatically. When finished, close [lid] [flap] to retain moisture.

{*For re-fill pouch*}

**Refill [Pouch]:**

[[Look for] Product expiration date on back of refill pouch.] Open [Remove lid from] empty canister [tub] [bucket]. [Place] [Put] [Insert] refill [pouch] into bucket [tub] [canister]. [Use scissors] [to] [Cut] [Rip] [Tear] [Pull] [Open] refill pouch. DO NOT remove wipe roll from refill pouch. Pull out corner of first sheet [wipe] from center of roll and push ½" to ¾" (1 to 2 cm) through "X" opening on lid. DO NOT push finger through opening. Replace lid and pull wipe [towel] at an angle. The next [sheet] [wipe] [towel] pops up automatically. When finished, close [lid] [flap] to retain moisture. If bucket becomes contaminated [*or*] [damaged] replace immediately. Replace bucket immediately if tabs below [lid] [flap] become damaged.

{*or*}

Refill [Pouch]:

{*Administrative note:* Note: Parenthesis ( ) or [bracketed text] is optional text, it might not appear on the printed label. Text appearing in {braces} is for administrative purposes only and will not appear on the printed label. Variables such as CAPITALIZATION, plurals or singular, **bold** and *italics* are optional unless specified in 40 CFR. Listed uses and use sites can be used partially or in their entirety. Underlined text is new. ~~Strike through~~ text means it has been removed.}

1. [[Look for] Product expiration date on back of refill pouch.]
2. Open [Remove lid from] empty canister [bucket]. [Place] [Put] [Insert] refill [pouch] into bucket [canister].
3. [Use scissors] [to] [Cut] [Rip] [Tear] [Pull] [Open] refill pouch. DO NOT remove wipe roll from refill pouch.
4. Pull out corner of first sheet [wipe] from centre of roll and push  $\frac{1}{2}$ " to  $\frac{3}{4}$ " (1 to 2 cm) through "X" opening on lid. DO NOT push finger through opening.
5. Replace lid and pull wipe [towel] at an angle. The next [sheet] [wipe] [towel] pops up automatically. When finished, close [lid] [flap] to retain moisture. If bucket becomes contaminated [or] [damaged] replace immediately. Replace bucket immediately if tabs below [lid] [flap] become damaged.

{or}

**Refill [Pouch]:**

Open [Remove lid from] empty canister [tub] [bucket]. [Use scissors] [to] [Cut] [Rip] [Tear] [Pull] [Open] refill pouch. [Remove the new lot number /[expiry date] from pouch and place it on top of the old lot number /[expiry date] sticker on the canister]. Place saturated towelettes in empty canister [by] [invert[ing] contents of the pouch into empty canister]. Pull out corner of first sheet [wipe] from center of roll and push  $\frac{1}{2}$ " to  $\frac{3}{4}$ " (1 to 2 cm) through "X" opening on lid. DO NOT push finger through opening. Replace lid and pull wipe [towel] at an angle. The next [sheet] [wipe] [towel] pops up automatically. When finished, close [lid] [flap] to retain moisture. If bucket becomes contaminated [or] [damaged] replace immediately. Replace bucket immediately if tabs below [lid] [flap] become damaged.

{or}

**Refill [Pouch]:**

1. Open [Remove lid from] empty canister [bucket].
2. [Use scissors] [to] [Cut] [Rip] [Tear] [Pull] [Open] refill pouch. [Remove the new lot number /[expiry date] from pouch and place it on top of the old lot number /[expiry date] sticker on the canister].
3. Place saturated towelettes in empty canister [by] [invert[ing] contents of the pouch into empty canister].
4. Pull out corner of first sheet [wipe] from centre of roll and push  $\frac{1}{2}$ " to  $\frac{3}{4}$ " (1 to 2 cm) through "X" opening on lid. DO NOT push finger through opening.
5. Replace lid and pull wipe [towel] at an angle. The next [sheet] [wipe] [towel] pops up automatically. When finished, close [lid] [flap] to retain moisture. If bucket becomes contaminated [or] [damaged] replace immediately. Replace bucket immediately if tabs below [lid] [flap] become damaged.

{or}

**Refill [Pouch]:**

1. To replenish [canisters], [tub] [buckets], [flat-packs], [transport-packs], [soft-packs], [lids], [flaps] or [pouches] using refill pouch. Open empty canister [bucket] [flat-pack] [transport-pack lid].
2. Open refill pouch [by cutting the top of the pouch] and remove saturated towelettes.
3. Place saturated towelettes in empty canister [invert the contents of the pouch into empty canister].
4. Replace canister lid.
5. [Remove the new lot number/expiry date from pouch and place it on top of the old lot number/expiry date sticker on the canister]

{or}

{or canister or bucket containing a refill pouch}

1. [Open] [Remove lid from] [canister] [bucket]. [Remove the refill pouch from the [canister] [bucket].]
2. [Use scissors] [to] [Cut] [Rip] [Tear] [Pull] [Open] [wipes] refill pouch.
3. [Remove the refill roll from the pouch.] Place [the] saturated [towelettes] [wipes] in [the] empty canister [by] [invert[ing] contents of the pouch into empty canister.]
4. Pull out corner of first sheet [wipe] from centre of roll and push [ $\frac{1}{2}$ " to  $\frac{3}{4}$ " (1 to 2 cm)] through "X" opening on lid. [DO NOT push finger through opening.]

{*Administrative note:* Note: Parenthesis ( ) or [bracketed text] is optional text, it might not appear on the printed label. Text appearing in {braces} is for administrative purposes only and will not appear on the printed label. Variables such as CAPITALIZATION, plurals or singular, **bold** and *italics* are optional unless specified in 40 CFR. Listed uses and use sites can be used partially or in their entirety. Underlined text is new. ~~Strike-through~~ text means it has been removed.}

5. Replace lid and pull wipe [towel] at an angle. [The next [sheet] [wipe] [towel] pops up automatically.] [When finished, close [lid] [flap] to retain moisture.] [If bucket becomes contaminated [or] [damaged] replace immediately.] [Replace bucket immediately if tabs below [lid] [flap] become damaged.]

{*For re-sealable flatpack, transport pack or softpack*}

**To Open Package:**

1. Open [click-lock] [closure] and peel back -or- remove seal.
2. Pull out [one] wipe [sheet] [at a time] [, use as directed].
3. [When finished,] [firmly] close [click-lock] [closure] to retain moisture [to prevent drying between uses].

{or}

**Re-sealable soft pack:**

1. Remove the seal (from the place shown on the label)
2. Remove one sheet at a time.
3. Close the seal (to prevent drying between uses)

{*For single count pack*}

To Open Package: Tear open packet. Unfold and use as directed. Discard after single use.

Not for personal cleansing. This is not a baby wipe. [Do not flush in toilet].

{*Optional directions for refill pouch ONLY*}

Re-sealable soft pack

1. Remove the seal (from the place shown on the label)
2. Remove one sheet at a time.
3. Close the seal (to prevent drying between uses)

{or}

Re-sealable soft pack

Remove the seal (from the place shown on the label). Remove one sheet at a time. Close the seal (to prevent drying between uses)

To replenish [canisters], [buckets], [tub], [flat-packs], [transport-packs], [soft-packs], [lids], [flaps] or [pouches] using refill pouch

1. Open empty canister [bucket] [flat-pack] [transport-pack lid].
2. Open refill pouch [by cutting the top of the pouch] and remove saturated towelettes.
3. Place saturated towelettes in empty canister [invert the contents of the pouch into empty canister].
4. Replace canister lid.
5. [Remove the new lot number/expiry date from pouch and place it on top of the old lot number/expiry date sticker on the canister]

{or}

{*Optional directions for refill pouch ONLY*}

1. To replenish [bucket] [tub] [dispenser] using refill pouch: Open empty canister lid.
2. Open refill pouch [by cutting the top of the pouch] and remove saturated towelettes.
3. Place saturated towelettes in empty canister [tub] [invert the contents of the pouch into empty canister [tub]].
4. Replace canister [tub] lid.
5. [Remove the new lot number/expiry date from pouch and place it on top of the old lot number/expiry date sticker on the canister [tub]]

{*Administrative note:* Note: Parenthesis ( ) or [bracketed text] is optional text, it might not appear on the printed label. Text appearing in {braces} is for administrative purposes only and will not appear on the printed label. Variables such as CAPITALIZATION, plurals or singular, **bold** and *italics* are optional unless specified in 40 CFR. Listed uses and use sites can be used partially or in their entirety. Underlined text is new. Strike-through text means it has been removed.}

*{Optional directions for starter kit ONLY}*

**Starter Kit:**

1. Connect Poles
2. Attach
3. Clean
4. Remove when dirty

**STORAGE AND DISPOSAL:**

**Do not contaminate water, food or feed by storage and disposal**

PESTICIDE STORAGE: Store this product in a cool [dry] area, [away from direct sunlight and heat].

*{Note to reviewer: For [canisters], [buckets], [tubs] [flat-packs], [transport-packs], [soft-packs], [lids], [flaps] [or] [pouches] that are not intended to be refilled by consumer.}*

CONTAINER HANDLING: Dispose of wipe in trash after use. Do not flush. Tightly close lid [flap] between uses [to retain moisture]. [Non-refillable container [dispenser]]. Do not reuse or refill this container [dispenser]. Offer empty container [dispenser] for recycling. If recycling is not available, discard container [dispenser] in trash.

*{Note to reviewer: For [canisters], [buckets], [flat-packs], [transport-packs], [soft-packs], [lids], [flaps] or [pouches] intended to be refilled by the consumer}*

CONTAINER HANDLING: Dispose of wipe [cloth] in trash after use. Do not flush [in toilet]. Tightly [close lid] [reseal] [canister] [bucket] [pouch] [soft pack] [flat pack] [label] [lid] [flap] between uses [to retain moisture]. Do not reuse or refill except as described in the directions for use. Refill only with this product [-or- product name]. Offer empty container for recycling. If recycling is not available, [wrap and] discard [of empty container] in trash. Discard [of] empty [pouch] [soft pack] [flat pack] in trash.

*{Note to reviewer: For [refill wipe pouches that are intended to be inserted into [canisters] [buckets] by consumer.}*

CONTAINER HANDLING: Dispose of wipe in trash after use. Do not flush. Do not reuse this pouch directly. Offer empty pouch for recycling. Discard of empty pouch in trash.

*{Table 1 – Institutional Soils}*

- |                            |  |
|----------------------------|--|
| • Blood                    | • Laboratory stains                      |
| • Body oils                | • Mold stains                            |
| • Dead skin                | • Other common soils [and] [or] [stains] |
| • Dirt                     | • Other organic matter                   |
| • Feces [Fecal matter]     | • Plant based resins                     |
| • Fingerprints             | • Resins                                 |
| • Food residues [or soils] | • Soils                                  |
| • Grime                    | • Urine                                  |

*{Table 2 – Institutional Surface Materials}*

- |                             |                      |
|-----------------------------|----------------------|
| • Aluminum                  | • Glass              |
| • Chrome                    | • Glazed ceramic     |
| • Crystal                   | • Glazed porcelain   |
| • [Baked] enamel [surfaces] | • Glazed tile        |
| • Fiberglass fixtures       | • Laminated surfaces |

{*Administrative note:* Note: Parenthesis ( ) or [bracketed text] is optional text, it might not appear on the printed label. Text appearing in {braces} is for administrative purposes only and will not appear on the printed label. Variables such as CAPITALIZATION, plurals or singular, **bold** and *italics* are optional unless specified in 40 CFR. Listed uses and use sites can be used partially or in their entirety. Underlined text is new. ~~Strike-through~~ text means it has been removed.}

- Linoleum
- Metals
- Mirrors
- Painted surfaces
- Plastic
- Plastic laminate
- Plastic surfaces
- Sealed fiberglass [polyester, vinylester and epoxy resins]
- Stainless steel
- Synthetic marble
- Vinyl

{*Table 3 – institutional hard, non-porous surfaces*}

Medical and Dental:

Hard non-porous surfaces of

- Amalgamators
- Ambulance Equipment
- Anesthesia machines
- Autoclaves
- Baskets
- Bassinets
- Bedpans
- Bedrails
- [Bedside] commodes
- Bedside tables
- Blood pressure cuffs
- Blood pressure (BP) monitors
- BSL hoods
- Cabinet [handles]
- Call boxes
- Computerized Axial Tomography (CAT) equipment
- carts
- centrifuges
- chairs
- closet [handles]
- computer peripherals
- computer screens
- computer tables
- cords
- counters
- continuous positive airway pressure masks [CPAP masks]
- [crash] [emergency] carts
- Defibrillators
- dental countertops
- dental curing lights
- dental operator surfaces
- dentist [dental] chairs
- dental unit instrument trays
- desks
- desktops
- diagnostic equipment
- dialysis machines
- docking stations
- [exam] [examination] tables
- exterior of pipes
- external surfaces of [medical] equipment -or- [medical] equipment surfaces
- [external] [surfaces of] ultrasound transducers [- and/or- probes]
- Footboards<sup>10</sup>
- fume Hoods
- glucometers
- gurneys<sup>11</sup>
- handheld [electronic] devices
- headboards<sup>10</sup>
- hose ends
- [hospital] [patient] beds springs [railings] [frames]
- Infant incubators and care cribs
- IV poles [stands]
- IV pumps [external surface]
- keyboards
- laptops
- light lens covers
- loupes
- Manikins used in CPR training<sup>2</sup>
- mammography equipment
- [mayo] [instrument] stands
- medication carts
- medical equipment [surfaces]
- microscope knobs
- [computer] mouse
- mobile devices
- mobile electronic equipment
- mobile workstations
- mouse pads (aluminum, hard plastic)
- [Surfaces of] Magnetic Resonance Imaging equipment [MRI]
- nurse-call [devices] [buttons] [and cords]
- operating room tables<sup>11</sup> and lights
- operator light switches
- otoscope handles
- oxygen hoods
- overbed tables
- paddles
- pagers

{*Administrative note:* Note: Parenthesis ( ) or [bracketed text] is optional text, it might not appear on the printed label. Text appearing in {braces} is for administrative purposes only and will not appear on the printed label. Variables such as CAPITALIZATION, plurals or singular, **bold** and *italics* are optional unless specified in 40 CFR. Listed uses and use sites can be used partially or in their entirety. Underlined text is new. ~~Strike through~~ text means it has been removed.}

- patient chairs<sup>10</sup>
- patient monitoring equipment
- patient support and delivery equipment
- Phlebotomy trays
- Physical therapy (PT) equipment surfaces
- phone cradle
- power cords
- pulse oximeters
- PVC tubing
- reception counters [desks]
- remote controls
- respirators
- respiratory therapy equipment
- scales
- sequential compression devices
- shower fixtures
- side rails
- slit lamps
- small surfaces
- spine backboards
- stethoscopes
- stools
- stretchers<sup>11</sup>
- support bars
- tablet PCs
- tack
- toilet handholds
- traction devices
- ultrasound transducers
- walls [around toilet] [in patient rooms]
- wash basins
- wheelchairs
- workstations
- X-ray equipment

#### Veterinary:

##### Hard non-porous surfaces of

- animal equipment
- animal crates
- automatic feeders<sup>1</sup>
- buckets
- cages
- cage rack
- carts
- diagnostic equipment
- dog runs
- examination tables
- exterior surfaces of fountains
- external surfaces of [veterinary] equipment
- exterior surfaces of watering appliances
- farm vehicles (trucks)
- feed racks<sup>1</sup>
- fencing (metal, hard plastic)
- foot baths
- gates
- gathering [guiding] equipment
- grooming equipment
- handling equipment
- imaging equipment
- pens
- reception counters -or- desks -or- areas
- rehabilitation equipment
- scales
- [wash] stalls
- transportation crates
- troughs<sup>1</sup>
- veterinary care surfaces
- underwater treadmill

#### Professional Beauty:

##### Hard non-porous surfaces of

- Chairs and Stools
- Clipper handles<sup>12</sup>
- Clipper blades<sup>12</sup>
- Countertops
- Esthetic tools and equipment<sup>12</sup>
- Facial tables
- Implements
- Magnifying lamps/lenses
- Massage [Stones] [Cups] [Cupping Equipment]
- Massage [tables], [beds<sup>11</sup>] [and cradles]
- [Non-circulating] [circulating] footbaths [surfaces]
- Pedicure foot [spas] [basins] [baths]<sup>12</sup>
- Sinks
- Skin and body equipment
- Spa equipment
- Tanning [beds] [and equipment]
- Workstations

#### Greenhouse (Horticulture):

##### Hard non-porous surfaces of

- belly pans
- ceilings
- drying tables
- [extraction] [trimming] equipment

{*Administrative note:* Note: Parenthesis ( ) or [bracketed text] is optional text, it might not appear on the printed label. Text appearing in {braces} is for administrative purposes only and will not appear on the printed label. Variables such as CAPITALIZATION, plurals or singular, **bold** and *italics* are optional unless specified in 40 CFR. Listed uses and use sites can be used partially or in their entirety. Underlined text is new. ~~Strike-through~~ text means it has been removed.}

- floors<sup>16</sup>
- greenhouses
- handheld tools
- lighting
- processing tables
- racking
- scales
- trimmers
- walls

#### Miscellaneous

##### Hard non-porous surfaces of

- [bathroom] fixtures
- [bathroom] faucet[s]
- beams
- biosafety cabinets
- blinds
- block construction material
- BP Monitors
- cabinets
- ceilings
- cell[ular] -or- mobile phones
- chairs
- changing tables<sup>11</sup>
- chemotherapy hoods
- [children's] furniture
- closets
- computer keyboards & mice
- counters -or- countertops
- crawl spaces
- dashboard
- desk[s] [tops]
- [diaper -or- infant] changing [tables] (hard plastic surfaces)
- drain troughs
- drip pans
- [restaurant<sup>2</sup>] tables
- door[s] [and drawer] [handle[s]] [frames]
- empty garbage bins
- [filing] [medicine] cabinets
- [finished -or- painted] walls
- finished basements
- foundations
- floors<sup>16</sup> [around toilets]
- garbage storage
- [glass] [stainless steel] equipment
- grocery [shopping] carts
- furniture
- [hand]railings -or- rails
- areas -or- surfaces behind and under sinks
- HVAC Systems<sup>9,13</sup>
- [instrument] stands
- joists
- lamps
- light fixtures -or- switches -or- panels
- lockers
- [medicine] cabinets
- non-circulating footbath surfaces
- phones
- rear view mirror
- room benches
- sealed [concrete] floors
- sealed drywall [and gypsum board]
- sealed walls
- shelves [and drawers]
- steering wheel
- stick shift
- tables
- tabletops
- trusses
- wall cavities
- wallboard
- [washable] walls
- windowsills
- Telephones

#### {Table 4 – Institutional use sites}

##### Medical and Dental:

##### Hard non-porous surfaces of

- Acupuncture Clinics [Facilities]
- Alternative care facilities
- Amalgamators
- Ambulances
- Ambulatory Surgical Centers (ASC)
- Anesthesia Rooms or Areas
- Assisted Living Nursing Homes
- Assisted living facilities
- Biopharmaceutical Areas
- Carts
- CAT Lab[oratories]
- Central Service Areas
- Central Supply Rooms -or- Areas
- Chiropractic Clinics

{*Administrative note:* Note: Parenthesis ( ) or [bracketed text] is optional text, it might not appear on the printed label. Text appearing in {braces} is for administrative purposes only and will not appear on the printed label. Variables such as CAPITALIZATION, plurals or singular, **bold** and *italics* are optional unless specified in 40 CFR. Listed uses and use sites can be used partially or in their entirety. Underlined text is new. ~~Strike through~~ text means it has been removed.}

- Cleanrooms
- Colleges
- Containment Areas [(CDC) Biosafety labels 1 to 4]
- Critical Care Units -or- CCUs
- Critical Environments
- Clinics
- Dental Operatories
- Dental -or- Dentist's [Facilities] [Offices] [Clinics]
- Dialysis Clinics [Facilities]
- Doctors' Offices
- Donation Centers [blood] [plasma] [semen] [milk] [apheresis]
- Emergency Rooms [ER]
- Emergency Care Service [EMS] [Areas] [including Fire, Police and Ambulance]
- [Emergency Medical] Transport Vehicles
- Endoscopy Suites
- Examination Rooms
- Eye Surgical Centers
- FDA Regulated Sites
- Foot Care Nursing
- Full Care Nursing Homes
- GI [Centers] [Suites]
- GMP Facilities
- Health Care [Settings] [Facilities] [Equipment] [Surfaces]
- Homecare
- Hospices
- Hospital[s] [Settings] [Facilities] [Equipment] [Surfaces]
- Intensive Care Units [Areas] [ICU]
- Isolation Areas
- Laundry Rooms
- Compound Pharmacy Laboratories
- Life Science[s] [Laboratories] [Facilities]
- Long Term Care Facilities
- Massage Clinics [Facilities]
- [Medical] Clinics
- Medical Devices
- Medical Facilities [Offices] [Clinics]
- [Medical] [Physician's] [Doctor's] Offices
- Midwifery [Facilities] [Offices] [Clinics]
- [Naturopathic] [Homeopathic] Clinics
- [Newborn] [Neonatal] Nurseries
- [Intensive Care] Units [NICU]
- [Nursing] [Nurses'] Stations
- Operating Rooms
- Ophthalmic Offices
- Ophthalmology Clinics
- Operating [Rooms] [OR] [Theatres]
- Orthopedic Offices [Clinics]
- Otolaryngology Offices [Clinics]
- Out-Patient [Surgical Centers (OPSC)] Clinics [Facilities]
- Patient Areas
- Patient Restrooms
- Patient Rooms
- [Pediatric] Examination Rooms [Areas]
- Pediatric Intensive Care Units [PICU]
- Pharmacies
- Physical Therapy Rooms [Areas]
- Physicians' Offices
- Podiatry Offices [Clinics]
- Psychiatric Facilities
- General Admission Areas
- Radiology Rooms [Areas]
- Recovery Rooms
- Rehabilitation Centers
- Respiratory Therapy Rooms [Areas] [Clinics] [Facilities]
- Schools
- Sleep Therapy Clinics [Facilities]
- Stomatology Hospitals
- Surgery Rooms
- Waiting Areas
- Waiting Rooms
- Wellness Centers
- X-Ray Rooms [Areas]

Veterinary/Life Science/Lab Animal Research:  
Hard non-porous surfaces of

- Agriculture farms and barns
- Agriculture & Livestock Buildings
- Animal [Containment] [Enclosures]
- Animal care facilities
- Animal dental operatory
- Animal housing [facilities] [and areas]
- Animal shelters and kennels
- Animal [Pet] Housing [Kennels] [Facilities]
- Animal Examination Rooms
- Animal Holding Areas
- Animal Hospitals
- Animal Life Science Laboratories
- [Animal -or- Pet] Grooming Facilities
- Animal rescue Shelters [Facilities]
- Animal Transportation Vehicles
- Animal Quarters
- Adoption Facilities
- Barns [premises]
- Breeding Establishments
- Breeder [houses] [facilities] [premises]
- Broiler [houses] [facilities] [premises]
- Boarding Shelters



{*Administrative note:* Note: Parenthesis ( ) or [bracketed text] is optional text, it might not appear on the printed label. Text appearing in {braces} is for administrative purposes only and will not appear on the printed label. Variables such as CAPITALIZATION, plurals or singular, **bold** and *italics* are optional unless specified in 40 CFR. Listed uses and use sites can be used partially or in their entirety. Underlined text is new. ~~Strike-through~~ text means it has been removed.}

- Bovine Farms
- Catteries
- Cages
- Central Animal Facilities
- Dairy Farms
- Diagnostic Laboratories
- Equine Farms [Facilities]
- Exam Rooms
- [Exotic] [Veterinary] [Veterinarian] [Animal] [Clinics] [Import] [Export] [Facilities]
- Farms
- Farm premises
- Fish Farms [Facilities]
- Hatcheries
- Imaging Suites
- Kennels
- Laboratories
- Lab Animal Research Facilities
- Large Animal Facilities
- Life Science [Research] Facilities [Laboratories]
- Livestock -and/or- Swine -and/or- Poultry Facilities
- [Non-human] Primate Areas
- Pet [Areas] [Quarters]
- [Pet] Boarding [Facilities]
- Pet Shops -or- Stores
- Pet [Animal] Care Facilities
- Pet [Animal] Housing
- Poultry [Hatcheries] [Broiler Houses] [Breeder Houses] [Facilities] [Premises] [Houses]
- Poultry
- Practices
- Quarantine [Facilities]
- Radiology Clinics [Facilities]
- Reception Areas
- Rodent Facilities
- Small Animal Facilities
- Surgical Suites
- Swine [Farrowing] Nursery [Finisher]
- Swine
- Tack Shops
- Therapeutic Laser Clinics [Facilities]
- Transportation vehicles
- Treatment facilities
- Truck Wash [Facility]
- Ultrasound Clinics [Facilities]
- Vehicles
- Veterinary Clinics [Facilities] [practices] [hospitals] [Offices] [Waiting Rooms]
- Veterinary Examination Rooms
- Veterinary X-ray Rooms
- Veterinary Operating Rooms
- Veterinary Laboratories
- Vivariums
- Zoos

#### Professional Beauty:

##### Hard non-porous surfaces of

- Barbershops
- Beauty [Salons] [Shops]
- Clinics
- Facial Spas
- Footbaths
- Hair Salons
- Hairstyling Establishments
- Health Club[s] [Facilities]
- Lash bars
- Massage Therapy Clinics
- Medesthetic Clinics [Treatment Room]
- Nail Salons
- Pedicure Salons
- Spas [and] [Massage/Facial] [Hair/Nail] [Salons]
- Tanning [Facilities] [Spas]
- Tattoo Parlors
- Treatment rooms
- Wellness centers

#### Mold and Mildew Remediation and Restoration:

##### Hard non-porous surfaces of

- Crime scenes
- Crisis (Crime) (and) (Trauma) (Fire) Scenes
- Fire clean-ups
- Grey or Black Water [Damage][Sewage] Areas
- HVAC Systems
- Mold and mildew remediation [sites]
- Professional restoration [sites]
- Restoration Industries [including water, fire, and mold restoration]
- Roofs
- Sewage backflow sites [areas]
- Trauma [sites] [areas]
- Water/flood damaged [restoration] areas
- Water and flood damage sites

#### Greenhouse (Horticulture):

##### Hard non-porous surfaces of

{*Administrative note:* Note: Parenthesis ( ) or [bracketed text] is optional text, it might not appear on the printed label. Text appearing in {braces} is for administrative purposes only and will not appear on the printed label. Variables such as CAPITALIZATION, plurals or singular, **bold** and *italics* are optional unless specified in 40 CFR. Listed uses and use sites can be used partially or in their entirety. Underlined text is new. ~~Strike through~~ text means it has been removed.}

- Clean Rooms
- [Drying] [Curing] Rooms
- Extraction Rooms
- Greenhouses
- Growing Facilities
- Hydroponic Growing Areas

- Indoor Grow Rooms
- Licensed Producers
- Production Facilities
- Packaging [Processing] Areas
- Storage Areas

#### Miscellaneous

##### Hard non-porous surfaces of

- Airplanes [Airports] [Aviation]
- Amusement parks
- Attics
- Basements
- Bowling Alleys
- Buses
- Non-food handling areas of Cafeterias
- Campers
- Campgrounds
- Cellars
- Churches
- Colleges
- Convenience Stores
- Convention Centers
- Correctional Facilities
- Crawl Spaces
- Cruise Ships
- Crisis [Crime and Trauma] [Fire] Scenes
- [Home] Day Care Centers
- Dorms
- Dormitories
- Educational Institutions
- Elevators
- Factories
- Non-food handling areas of Fast-Food Restaurants
- Non-food handling areas of Food Service Establishments [Restaurants]
- Funeral Homes
- Gas Stations
- Greenhouses
- Grey or Black Water [Damage] [Sewage] Areas
- Health Club Facilities
- Hotels
- HVAC Systems<sup>9, 13</sup>
- Industrial Facilities
- Institutional [Bathrooms]
- [Institutional] Laundromats
- Institutions
- Libraries
- Living Rooms
- Locker Rooms
- Lodging Establishments

- Lounges
- Malls
- Manufacturing Facilities
- General Merchandise Stores, Discount Retailers
- Military Installations
- Mortuaries
- Motels
- Office Buildings
- Police [and] [or] [Fire] Vehicles
- Public Areas
- Public Facilities
- Public Restrooms
- Public Telephone[s] [Booths]
- Public Transportation Systems
- Recreational [Athletic] Centers -or- Facilities
- Rest Stops
- Restoration Industries [Including Water, Fire]
- Restrooms -or- Restroom Areas
- Retail and Wholesale Establishments
- Retail Businesses
- [Retail] [Wholesale] Florists
- RVs
- School Buses
- Schools
- Sewage Backflow Areas
- School Buses
- Schools
- Shelters
- Shippers
- Shopping Centers
- Shops
- Shower Rooms
- Sports Arenas
- Sports Stadiums
- Subways
- Non-food handling areas of Supermarkets
- Transportation Terminals
- Transport vehicles
- Trailers
- Trains
- Universities
- Vehicles
- Warehouse Clubs

{*Administrative note:* Note: Parenthesis ( ) or [bracketed text] is optional text, it might not appear on the printed label. Text appearing in {braces} is for administrative purposes only and will not appear on the printed label. Variables such as CAPITALIZATION, plurals or singular, **bold** and *italics* are optional unless specified in 40 CFR. Listed uses and use sites can be used partially or in their entirety. Underlined text is new. ~~Strike-through~~ text means it has been removed.}

- Water [/Flood] Damaged [Restoration] Areas

{Table 5 – Residential Soils}

- |   |   |
|---|---|
| <ul style="list-style-type: none"> <li>• Baby food</li> <li>• Bacon fat</li> <li>• Bathtub rings</li> <li>• Beverage stains</li> <li>• Baked/burnt on food</li> <li>• Coffee</li> <li>• Cosmetic stains</li> <li>• Crayon / pencil marks</li> <li>• Food stains</li> <li>• Greasy [oily] food spills [splatters]</li> <li>• Fingerprints</li> </ul> | <ul style="list-style-type: none"> <li>• Grime</li> <li>• Hair dye</li> <li>• Handprints</li> <li>• Heel/Scuff marks</li> <li>• Juice stains</li> <li>• Pet stains</li> <li>• Smudges</li> <li>• Soap scum</li> <li>• Sticky Food Messes [or spills]</li> <li>• Tough soils</li> <li>• Wine stains</li> </ul> |
|---|---|

{Table 6 – Residential Surface Material}

- |  |   |
|--|---|
| <ul style="list-style-type: none"> <li>• Chrome</li> <li>• Crystal (non-food contact items)</li> <li>• Enamel</li> <li>• Fiberglass fixtures</li> <li>• Formica<sup>5</sup></li> <li>• Glass</li> <li>• Glazed ceramic</li> <li>• Glazed porcelain</li> <li>• Glazed tile</li> <li>• Linoleum</li> <li>• Metals</li> </ul> | <ul style="list-style-type: none"> <li>• Mirrors</li> <li>• Plastic laminate</li> <li>• Plastic surfaces</li> <li>• Sealed fiberglass [polyester, vinylester and epoxy resins]</li> <li>• Sealed granite</li> <li>• Sealed grout</li> <li>• Stainless steel</li> <li>• Synthetic marble</li> <li>• Vinyl</li> </ul> |
|--|---|

{Table 7 – Residential hard non-porous surfaces}

Hard, non-porous surfaces of

- |   |  |
|---|--|
| <ul style="list-style-type: none"> <li>• Outer surfaces of air vents</li> <li>• Appliance exterior</li> <li>• Athletic equipment</li> <li>• Bathrooms</li> <li>• Bathroom fixtures</li> <li>• [Bathroom] [kitchen<sup>1</sup>] faucet</li> <li>• Bathroom doorknobs</li> <li>• Bathtubs</li> <li>• Bed frames</li> <li>• [Behind and under] counters</li> <li>• [Behind and under] sinks</li> <li>• Blood Pressure monitors</li> <li>• Burner trays</li> <li>• Cabinets</li> <li>• Cages</li> <li>• Car [boat] [trailer] [interior]</li> <li>• Cell[ular] – or digital phones</li> <li>• Chairs (not including highchairs)</li> <li>• Changing tables<sup>11</sup></li> <li>• Closets [handles]</li> <li>• Computers</li> <li>• Computer keyboards</li> </ul> | <ul style="list-style-type: none"> <li>• Computer mouse</li> <li>• Computer peripherals</li> <li>• Computer screen</li> <li>• Cords</li> <li>• Countertops<sup>1</sup></li> <li>• Cupboard</li> <li>• Desk[s][tops]</li> <li>• Diaper pails</li> <li>• Door [knobs] [handles] [frames]</li> <li>• Exercise equipment</li> <li>• Exercise mats</li> <li>• Exterior surfaces of toilets</li> <li>• Exterior surfaces of pipes</li> <li>• Footboards<sup>10</sup></li> <li>• Finished hardwood</li> <li>• Fixture (chrome) (stainless steel)</li> <li>• Floor (glazed tile)</li> <li>• Floor (vinyl)</li> <li>• Furniture</li> <li>• Garbage [trash] can [bin]</li> <li>• Glazed ceramic tile</li> <li>• Glazed porcelain tile</li> </ul> |
|---|--|

{*Administrative note:* Note: Parenthesis ( ) or [bracketed text] is optional text, it might not appear on the printed label. Text appearing in {braces} is for administrative purposes only and will not appear on the printed label. Variables such as CAPITALIZATION, plurals or singular, **bold** and *italics* are optional unless specified in 40 CFR. Listed uses and use sites can be used partially or in their entirety. Underlined text is new. ~~Strike through~~ text means it has been removed.}

- [Hand] railings
- Infant cribs<sup>11</sup>
- [Inside of] drawers
- Grill exterior
- Laminated surfaces
- Lamps
- Light fixture
- Medicine cabinet
- Metal blinds
- Metal surfaces
- Microwave exterior
- [Outdoor] Patio furniture
- Oven exterior
- Packing benches<sup>1</sup>
- Phone cradles
- Piano keys
- Picnic table<sup>1</sup>
- Plastic laundry basket
- Recycling bins
- Refrigerator/Freezer exterior<sup>13</sup>
- Remote controls
- Sealed granite
- Shelves
- Shower[door][curtain]
- Showers [stalls]
- Sink [basin]
- Stainless steel surfaces
- Stereo consoles
- Storage bins
- Stool
- Strollers
- Tables<sup>1</sup>
- Tabletop<sup>1</sup>
- Telephone
- Tiled walls
- Toilet handholds
- Toilet rims [seats]
- Toys<sup>1</sup>
- Training toilets
- Tools
- [Bathroom] vanity
- Vinyl
- [Washable] walls
- Wash basins
- Walkers
- Washing machine exterior
- Windows
- Work bench

{Table 8 – Residential use sites}  
Hard, non-porous surfaces of

- Basements
- Bathrooms
- Bedrooms
- Daycare settings
- Dorm rooms
- Dining room
- Exercise rooms
- Family rooms
- Garages
- Garbage rooms
- Homecare settings
- Household settings
- Kitchens<sup>1</sup>
- Laundry rooms
- Living rooms
- Nursery [rooms]
- Nursing homes
- Outdoor [patio] furniture
- Pet areas
- Playrooms
- Residential settings
- Restrooms
- Storage rooms
- Tool sheds
- Washrooms

{*Administrative note*: Note: [Bracketed text] is optional text, it might not appear on the printed label. Text appearing in {braces} is for administrative purposes only and will not appear on the printed label. Parenthesis ( ) is for alternate text or text that will appear in parenthesis. Variables such as CAPITALIZATION, plurals or singular, **bold** and *italics* are optional unless specified in 40 CFR. Listed uses and use sites can be used partially or in their entirety. Underlined text is new. ~~Strike through~~ text means it has been removed.

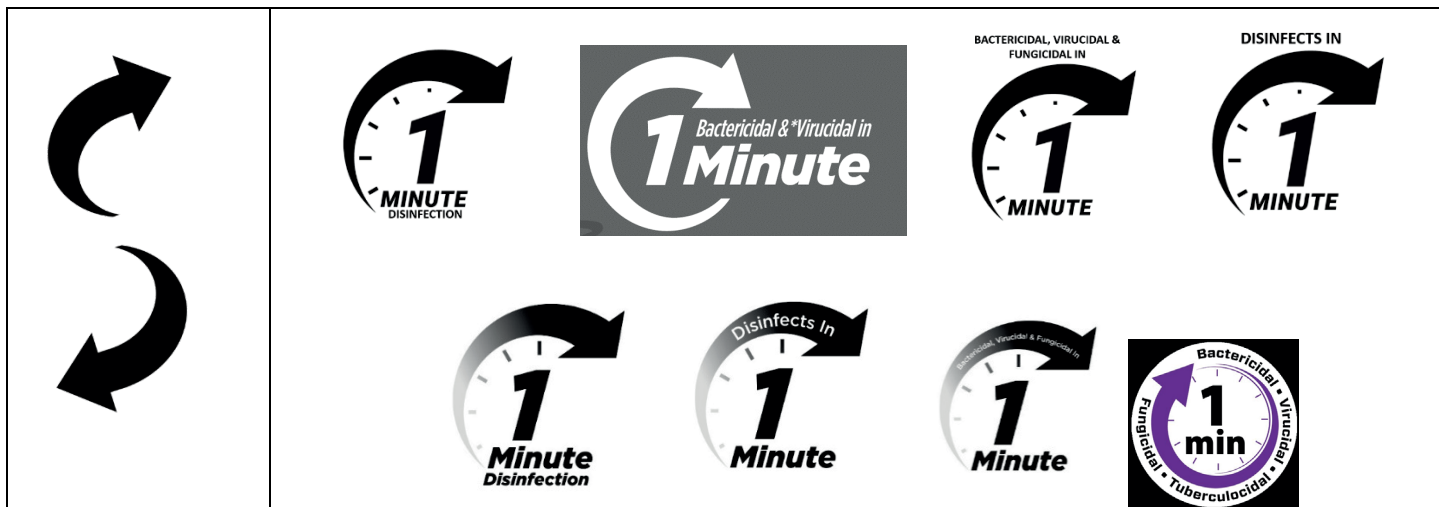
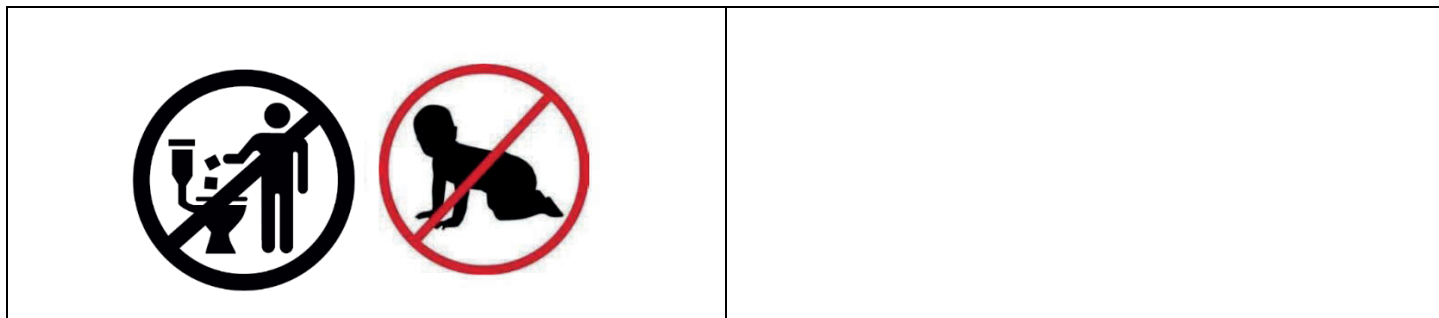
{QUALIFIERS}

{*Claim Qualifiers*}

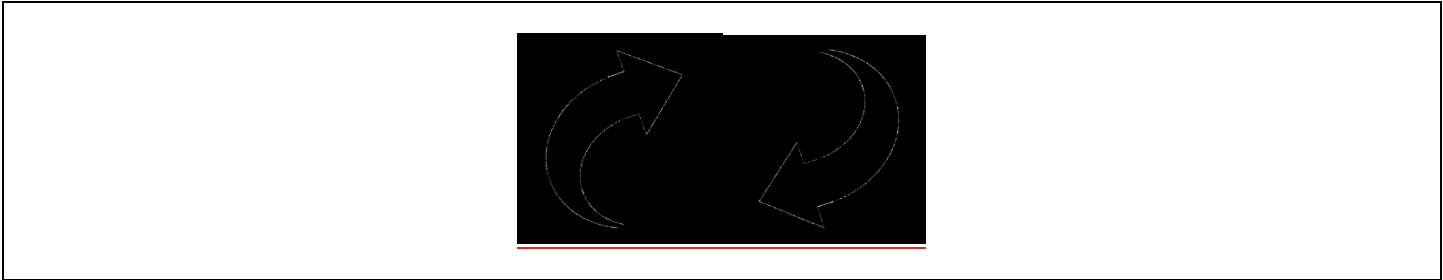
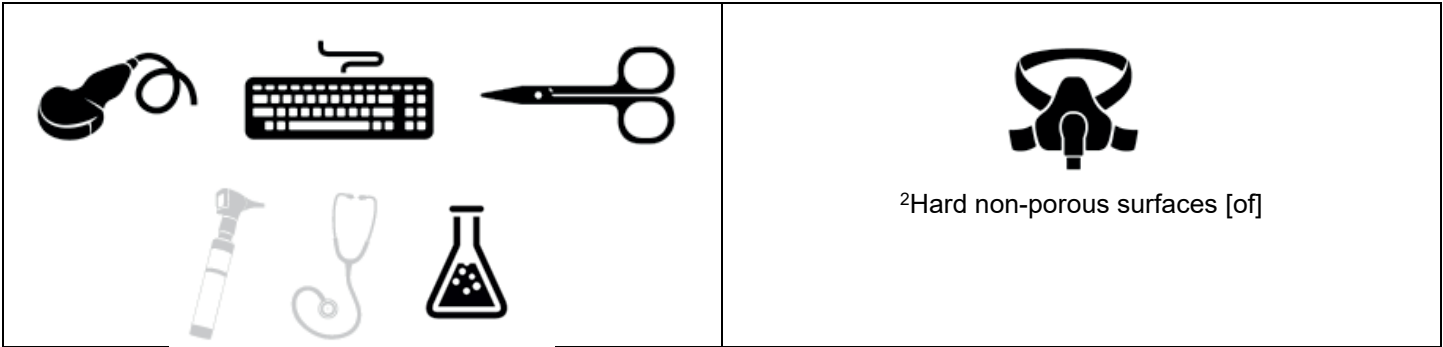
Symbol	Qualifier
*	{* <i>Virus claims listed on label</i> }
1	<sup>1</sup> Non-food contact surfaces [of] {or} [Rinse with potable water after disinfecting]
2	<sup>2</sup> Hard non-porous surfaces [of]
3	<sup>3</sup> When used according to cleaning use directions [instructions]
4	<sup>4</sup> When used according to disinfection use directions [instructions]
5	<sup>5</sup> Formica is a registered trademark of the Formica Corporation
6	<sup>6</sup> Non-Critical medical devices are items that come in contact only with intact skin.
7	<sup>7</sup> SARS-Related Coronavirus 2 [SARS-CoV-2 (the virus that causes COVID-19)] [SARS-CoV-2] [USA-WA1/2020] [BEI NR-52281]
8	<sup>8</sup> This product removes the following [non-living] allergens: [cat dander]. [cockroach matter]. [cockroach debris], [cockroach particles], [dog dander], [dust mite debris], [pet dander], [pollen particles]
9	<sup>9</sup> For exterior surfaces only
10	<sup>10</sup> Unupholstered
11	<sup>11</sup> Frames, Railings
12	<sup>12</sup> Follow local/state requirements for disinfection of [barber] [and] [Beauty/Manicure] [Hair] Tools [and Instruments].
13	<sup>13</sup> Allow [surfaces] to come to room temperature prior to disinfection
14	<sup>14</sup> AHP® and Accelerated Hydrogen Peroxide® technology and logo's (is) (are) (registered) (trademark) (the property) of Diversey Inc. used under license.]
15	<sup>15</sup> Use a 3 minute contact time against <i>Aspergillus brasiliensis</i> { <i>Note to reviewer: These applicable statements will only be included if the organism claim is made on the marketplace label</i> }
16	<sup>16</sup> Sealed [floors]
17	<sup>17</sup> <i>Enterococcus faecalis</i> Vancomycin Resistant [VRE] <sup>17</sup> <i>Staphylococcus aureus</i> Methicillin Resistant [MRSA] <sup>17</sup> <i>Staphylococcus aureus</i> Vancomycin Resistant [VRSA] <sup>17</sup> <i>Staphylococcus aureus</i> Vancomycin Intermediate Resistant [VISA]
^	These phrases and alternate brand name will only be used when the appropriate wipe substrates are used

{*Administrative note:* Note: [Bracketed text] is optional text, it might not appear on the printed label. Text appearing in {braces} is for administrative purposes only and will not appear on the printed label. Parenthesis ( ) is for alternate text or text that will appear in parenthesis. Variables such as CAPITALIZATION, plurals or singular, **bold** and *italics* are optional unless specified in 40 CFR. Listed uses and use sites can be used partially or in their entirety. Underlined text is new. ~~Strike through~~ text means it has been removed.

{*Graphic options*}



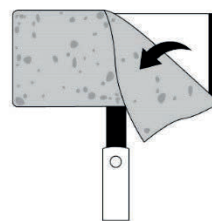
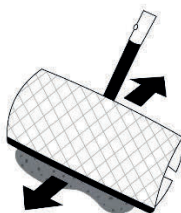
{*Administrative note:* Note: [Bracketed text] is optional text, it might not appear on the printed label. Text appearing in {braces} is for administrative purposes only and will not appear on the printed label. Parenthesis ( ) is for alternate text or text that will appear in parenthesis. Variables such as CAPITALIZATION, plurals or singular, **bold** and *italics* are optional unless specified in 40 CFR. Listed uses and use sites can be used partially or in their entirety. Underlined text is new. ~~Strike through~~ text means it has been removed.



{*Administrative note:* Note: [Bracketed text] is optional text, it might not appear on the printed label. Text appearing in {braces} is for administrative purposes only and will not appear on the printed label. Parenthesis ( ) is for alternate text or text that will appear in parenthesis. Variables such as CAPITALIZATION, plurals or singular, **bold** and *italics* are optional unless specified in 40 CFR. Listed uses and use sites can be used partially or in their entirety. Underlined text is new. ~~Strike through~~ text means it has been removed.

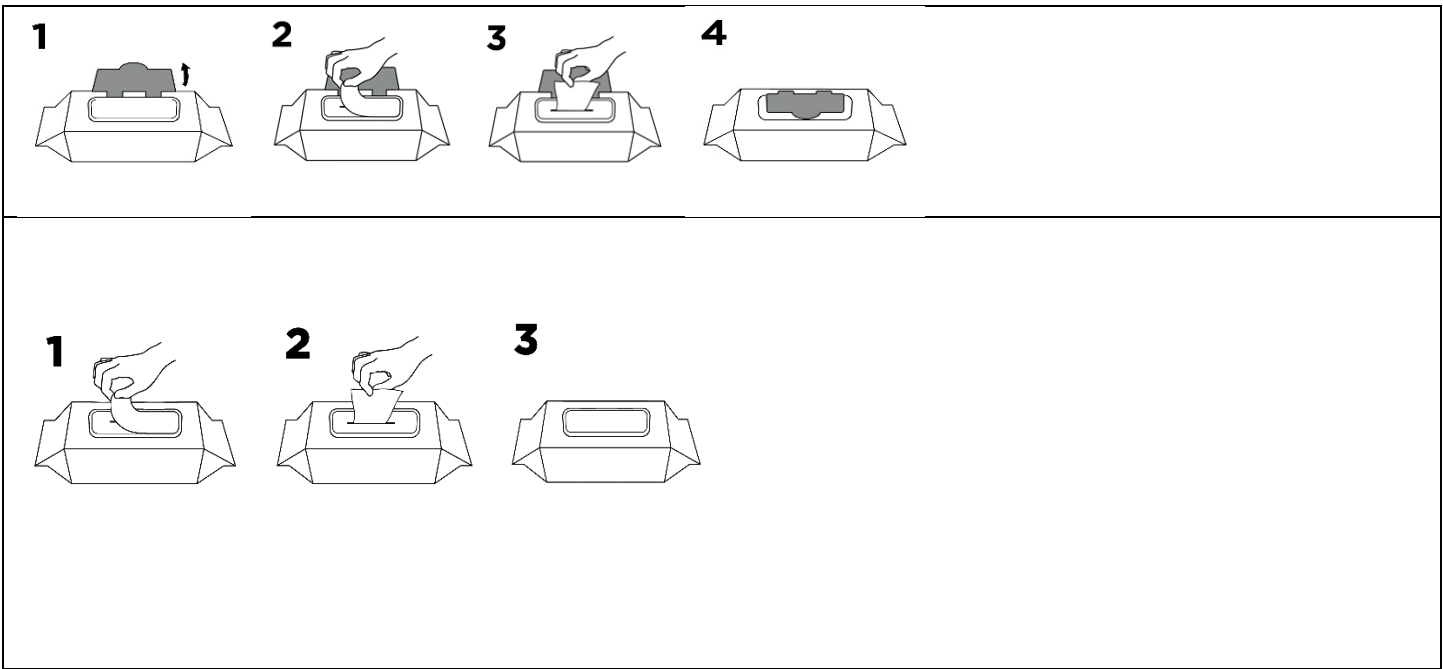


<sup>2</sup>Hard non-porous surfaces [of]





{*Administrative note:* Note: [Bracketed text] is optional text, it might not appear on the printed label. Text appearing in {braces} is for administrative purposes only and will not appear on the printed label. Parenthesis ( ) is for alternate text or text that will appear in parenthesis. Variables such as CAPITALIZATION, plurals or singular, **bold** and *italics* are optional unless specified in 40 CFR. Listed uses and use sites can be used partially or in their entirety. Underlined text is new. ~~Strike through~~ text means it has been removed.



^Only will be used when plant-based wipe substrate is used