



**OFFICE OF CHEMICAL SAFETY AND POLLUTION PREVENTION**

WASHINGTON, D.C. 20460

May 29, 2025

**SENT BY EMAIL**

Sara Seltzer  
sseltzer@solenis.com  
DIVERSEY, INC.

Subject: Labeling Notification per Pesticide Registration Notice (PRN) 98-10 - Notification to correct typographical errors, add optional text to master label, and make changes requested by CDPR  
Product Name: OXIVIR WIPES  
Admin Number: 70627-60  
EPA Receipt Date: 07/11/2024  
Action Case Number: 00620218

Dear Sara Seltzer:

The U.S. Environmental Protection Agency is in receipt of your application for notification under Pesticide Registration Notice 98-10 for the above referenced product. The EPA has conducted a review of this request for its applicability under PRN 98-10 and finds that the action requested falls within the scope of PRN 98-10.

The labeling submitted with this application has been stamped "Notification" and will be placed in our records.

Should you wish to add/retain a reference to your company's website on your label, then please be aware that the website becomes labeling under the Federal Insecticide, Fungicide, and Rodenticide Act and is subject to review by the EPA. If the website is false or misleading, the product will be considered to be misbranded and sale or distribution of the product is unlawful under FIFRA section 12(a)(1)(E). 40 CFR § 156.10(a)(5) lists examples of statements the EPA may consider false or misleading. In addition, regardless of whether a website is referenced on your product's label, claims made on the website may not substantially differ from those claims approved through the registration process. Therefore, should the EPA find or if it is brought to our attention that a website contains statements or claims substantially differing from statements or claims made in connection with obtaining a FIFRA section 3 registration, the website will be referred to the EPA's Office of Enforcement and Compliance Assurance.

If you have questions, please contact Katelyn Chambers via email at [chambers.katelyn@epa.gov](mailto:chambers.katelyn@epa.gov).

Sincerely,

A handwritten signature in black ink, reading "Heather A. Garvie". The script is elegant and cursive, with the first letters of each word being capitalized and larger than the others.

Heather Garvie, Senior Regulatory Advisor  
RMB 2, AD  
Office of Pesticide Programs

{Note to Agency: Text appearing in [brackets] or (parenthesis) is done to show interchangeable or optional text. Commas may be added where needed. Any language which appears between {braces} and is italicized is for administrative purposes only and will NOT appear on final printed label. Listed uses and use sites can be used partially or in their entirety. }

NOTIFICATION

70627-60

The applicant has certified that no changes, other than those reported to the Agency have been made to the labeling. The Agency acknowledges this notification by letter dated:

05/29/2025

OXIVIR® Wipes

• [Bactericide] • [\*Virucide] • [Fungicide] • [Mildewcide] • [Disinfectant] • [Cleaner]

Active Ingredient:

Hydrogen Peroxide .....0.5%  
[Inert] [Other] Ingredients .....99.5%  
Total .....100.0%

KEEP OUT OF REACH OF CHILDREN

DO NOT FLUSH

IN CASE OF EMERGENCY, CALL A POISON CONTROL CENTER OR DOCTOR FOR TREATMENT ADVICE.

(1-800-851-7145) (1-XXX-XXX-XXXX)

Have the product container or label with you when calling a Poison Control Center or doctor or going in for treatment

EPA Reg. No. 70627-60

EPA Est. No. {Insert EPA Est. No.}

(Net Contents:) {Insert package contents} (Wet) [Small] [Medium] [Large] [XLarge] [XL] [Wipes]

[Manufactured for:] [Distributed by:] ©{Year} Diversey, Inc., P.O. Box 19747, Charlotte, NC 28219-0747 U.S.A. (Company Name) (and Address) All Rights Reserve

[Manufactured in: {insert country}]

(Accelerated Hydrogen Peroxide® and) AHP® are [is a] trademark(s) of Diversey Inc.

((Insert telephone symbol) Questions? 1-800-XXX-XXXX

For ingredient and other information

visit {insert company Right to Know website})

[See reference sheet [enclosed in each case] for [a complete list of pathogenic organisms] [additional] [features] [and] [claims] [directions for use] [claimed for this product (or product name)].]

{Note to Agency: Text appearing in [brackets] or (parenthesis) is done to show interchangeable or optional text. Commas may be added where needed. Any language which appears between {braces} and is italicized is for administrative purposes only and will NOT appear on final printed label. Listed uses and use sites can be used partially or in their entirety. }

{Features, Claims and Uses}

{Product Descriptors}

<ul style="list-style-type: none"><li>• Active Ingredient is an Oxidizing Agent</li><li>• Bactericide</li><li>• Broad-Spectrum Disinfectant</li><li>• Cleaner</li><li>• Cleans, Deodorizes and Brightens in One Step<sup>1</sup></li><li>• Cleans, Disinfects, &amp; Deodorizes (with Hydrogen Peroxide)</li><li>• Cleans Grout</li><li>• Cleans Hard, Non-porous Water Washable Surfaces!</li><li>• Deodorizer</li><li>• Disinfectant</li><li>• Easy to Use</li><li>• For (Industrial), (Institutional) &amp; (Residential) Use</li><li>• Fungicide</li><li>• Fungicidal disinfectant against <i>C. auris</i></li><li>• Hospital Disinfectant Cleaner</li><li>• Hydrogen Peroxide</li><li>• Meets Surface Recommendations from OSHA’s Bloodborne Pathogens Standard for *HBV, *HCV &amp; *HIV-1</li><li>• Mildewcide</li></ul>	<ul style="list-style-type: none"><li>• Multi-Surface</li><li>• Multi-surface Disinfectant Cleaner</li><li>• Multi-surface [One-Step<sup>1</sup>] Disinfectant</li><li>• Non-Dulling</li><li>• No Gloves Required, unless directed</li><li>• Odor Counteractant</li><li>• Odor Neutralizer</li><li>• One-step<sup>1</sup> when used according to disinfection directions</li><li>• One-step<sup>1</sup> Disinfectant (Cleaner) (&amp; Deodorizer) (Wipes)</li><li>• Oxidizer</li><li>• Ready to Use</li><li>• Sanitizer</li><li>• Sanitizes</li><li>• Tuberculocide</li><li>• Towelette</li><li>• (Restroom) (&amp;) (Bathroom) (Disinfectant Cleaner)</li><li>• Use Daily to Prevent the Buildup of Dirt and Grime.</li><li>• *Virucide</li><li>• Wipe</li></ul>
---	---

(Marketing Statements)

1 Step Cleaning and Disinfection<sup>1</sup> in 1 minute  
1 Minute bactericidal, virucidal, (and 3 minute fungicidal)  
A disinfectant and cleaner (that cleans, disinfects and deodorizes in one labor saving step) when used according to disinfection directions for use.  
Alcohol Free  
All-in-one Disinfecting Wipe<sup>1</sup>  
An effective sanitizer-cleaner on hard nonporous surfaces when used according to directions for use as a non-food contact sanitizer  
An effective one-step<sup>1</sup> disinfectant cleaner for hard, nonporous surfaces  
Approved for Use in Home  
Breaks down (removes) (eliminates 99.9% of) (removes) (the most common) allergens (found in dust)\*\*  
Broad-spectrum (Multi-purpose) (Multi-surface) (Bactericidal) (\*Virucidal) (Tuberculocidal) (Fungicidal) (Sanitizer) (Disinfectant) (activity)  
Cleaning and disinfection in 1 minute  
Cleans (tough) grease and grime (and) (institutional) (soils)  
Cleans (and) disinfects (and deodorizes) hard, non-porous surfaces  
Cleans grout  
Cleans hard, non-porous water washable surfaces!  
Cleans, deodorizes and brightens in one step<sup>1</sup>  
Cleans (tough) soap scum  
Cleans while it kills germs<sup>1</sup>  
(Cleans) (Removes) (Eliminates 99.9% of) (Destroys) stains  
Compatible with microfiber (cloths)

*{Note to Agency: Text appearing in [brackets] or (parenthesis) is done to show interchangeable or optional text. Commas may be added where needed. Any language which appears between {braces} and is italicized is for administrative purposes only and will NOT appear on final printed label. Listed uses and use sites can be used partially or in their entirety. }*

Contains no phosphates  
Contains no VOC-emitting ingredients  
Controls (Eliminates 99.9% of) odor-causing bacteria  
Convenient, pre-wetted wipes on demand  
Deodorizer (Odor Counteractant)  
Deodorizes odor-causing bacteria  
Disinfects as it cleans when used according to disinfection directions for use  
Disinfects surfaces by killing [99.9%] SARS-Related Coronavirus 2 [SARS-CoV-2] [USA-WA1/2020] (the cause of COVID-19) [in one step<sup>1</sup>] on hard non-porous surfaces  
Dual action formulation providing broad spectrum activity against; fungi, mycobacteria, \*viruses, and bacteria  
Easy to use  
Effective – Cleans soap scum  
Effective cleaner  
Effective against Bloodborne Pathogens \*HBV, \*HCV & \*HIV-1  
Effective against SARS-Related Coronavirus 2 [SARS-CoV-2] [USA-WA1/2020] [in 1 minute] on hard non-porous surfaces  
[Effective against] [Disinfects] [Kills] [99.9%] SARS-CoV-2 [virus] (the cause of COVID-19) on hard non-porous surfaces  
(Eliminates) (Kills) 99.9% of (odor-causing) bacteria (from surfaces)  
Eliminates 99.9% of odors (caused by bacteria), (mold), (and) (mildew)  
Effective  
For (a) cleaner, fresher {insert use sites/surfaces from lists below} (or any hard, non-porous washable surface where disinfection is required.)  
For any non-food contact hard, non-porous surface where germs are a concern.  
For everyday use (in institutional (and) (industrial) facilities)  
For multiple cleaning tasks  
For non-scratch cleaning of showers and tubs, shower doors and curtains<sup>†</sup>, fixtures and toilet bowls  
For use (in) (Hospitals), (and) (Health Care) (settings) (as a multi-purpose disinfectant cleaner)  
For terminal cleaning  
Formula powered by AHP.  
Formulated with patented hydrogen peroxide technology  
Fragrance Free Formula (Unscented)  
Gentle on eyes, skin, and nose  
Good for most indoor cleaning tasks  
(Highly) compatible (formula) for most surfaces  
High (Frequently) touch[ed] surface(s) [disinfectant] [and] [cleaner]  
Intense cleaning action  
Keeps day care centers clean  
Kills (99.9% of) germs  
Kills (99.9% of) the cold\* and flu<sup>£</sup> \*viruses  
(Kills) (Destroys) (Eliminates 99.9% of) (household<sup>2</sup>) germs while it cleans  
(Kills) (Effective against) (the) cold (and) (flu) virus(es) (on hard, nonporous surfaces)  
Kills germs including: (SARS-CoV-2,) (Salmonella enterica,) (E. coli,) (MRSA,) (Rhinovirus,) (Streptococcus pneumoniae) (and) (Norovirus) on hard non-porous surfaces  
Kills bacteria and sanitizes  
Kills SARS-CoV-2 that causes COVID-19 on hard non-porous surfaces (in 15 seconds)  
[Kills] [Effective against] the virus that causes COVID-19 on hard non-porous surfaces  
[Kills] [Eliminates] 99.9% SARS-Related Coronavirus [SARS-CoV-2] [USA-WA1/2020] [causative agent of COVID-19] [the virus that causes COVID-19] on hard non-porous surfaces  
Kills the virus (SARS-CoV-2) that causes COVID-19 on hard non-porous surfaces

*{Note to Agency: Text appearing in [brackets] or (parenthesis) is done to show interchangeable or optional text. Commas may be added where needed. Any language which appears between {braces} and is italicized is for administrative purposes only and will NOT appear on final printed label. Listed uses and use sites can be used partially or in their entirety. }*

Kills [99.9% of] SARS-CoV-2, which causes COVID-19 on hard non-porous surfaces

Kills \*viruses

Kills bacteria and \*viruses on (common household<sup>2</sup>) hard, non-porous surfaces in 15 seconds (1 minute)

Kills bacteria (in 1 minute)

Kills odor-causing bacteria

Leaves {insert use sites/surfaces from lists below} smelling clean (with a clean fresh scent)

Leaves a fresh, clean scent

Leaves no (dull) (sticky) residue.

Leaves surfaces virtually streak-free

Lift the Cap, Pull Wipe, Wipe Surface

No fragrance added

No harsh (chemical) fumes

No rinse required

No streaking (or) (filming) (sticky residue) (formula)

Non-corrosive (to eyes) (and) (skin)

Non-tainting (leaves no unsightly residues)

Not a skin (dermal) sensitizer

Non-irritating to eyes

Non-irritating to skin

Non-irritating to respiratory tracts

Not for use on skin

Odor Neutralizer

Odor control (odor neutralizer) (deodorizer) (odor-counteractant) formula (on hard non-porous surfaces)

One-step<sup>1</sup> Cleaning and Disinfection in 1 minute

Oxivir® Clean

Patented (Technology)

Remove (dried) (stuck on) dirt (grime) (food) (spills) (grease) (greasy messes)

Proven "one-step"<sup>1</sup> disinfectant/cleaner/fungicide/mildewcide/virucide that is effective for hard, non-porous surfaces

Category IV Tox(icity) Rating (in all 6 toxicity categories)

Quickly (eliminates 99.9% of) (removes) odors

Reduces allergens<sup>++</sup>

Sanitizes

Specially designed to dissolve (penetrate) the toughest (stubborn) soils

(Step-saving), (Labor-saving,) (Time-saving,) (Cost-saving) formula

Suitable for everyday use

Surface cleaner with antibacterial formula

This product kills germs and removes allergens<sup>++</sup> while cleaning hard, nonporous surfaces

<sup>++</sup>This product removes the following (non-living) allergens<sup>++</sup>: (cat dander), (cockroach matter), (cockroach debris), (cockroach particles), (dog dander), (dust mite debris), (pet dander), (pollen particles)

To be used in sanitizing and disinfecting of hard, non-porous non-food contact surfaces and non-critical equipment which may harbor or spread germs

Tough on germs (pathogens)

Use daily to prevent the build-up of dirt and grime

Use only one product to get a streak-free shine plus antimicrobial action

(Uses) (Harnesses) the cleaning power of hydrogen peroxide

Versatile, Fast-acting, Convenient formula

Will not leave grit or soap scum

*{Note to Agency: Text appearing in [brackets] or (parenthesis) is done to show interchangeable or optional text. Commas may be added where needed. Any language which appears between {braces} and is italicized is for administrative purposes only and will NOT appear on final printed label. Listed uses and use sites can be used partially or in their entirety. }*

**(FUNGICIDAL AGAINST *Trichophyton interdigitale* and *Candida albicans*: 3 MIN(UTES).)**

**(\*\*FUNGICIDAL AGAINST *C. AURIS*: 5 MIN(UTES).)**

**(\*VIRUCIDAL: 1 MIN(UTES))**

**(BACTERICIDAL: 1 MIN(UTES))**

**(TUBERCULOCIDAL: 5 MIN(UTES))**

**(General Uses:)**

For Use in (Health Care), (Veterinary), (Animal Housing), (Dental), (Life Science Laboratory), (Medical), (Educational), (Retail), (Fitness), (Household), (Hospitality), (Industrial & Institutional Facilities), (Food Processing Establishments), and (Hospitals).

This product is a one-step<sup>1</sup> (hospital-use) germicidal disinfectant (and) (deodorant) (odor-counteractant) (odor neutralizer) designed for general cleaning, (and) disinfecting (deodorizing) (of) hard, non-porous inanimate surfaces. It cleans by removing dirt, grime, and other common soils found (in) (on) *{insert use sites/surfaces from lists below}* (or any hard, non-porous washable surface where disinfection is required.)

(It is designed for use on) (Use daily on) (the following) (hard, non-porous inanimate surfaces): *{insert surfaces from lists below}* (where disinfection is required). A potable water rinse is required for food contact surfaces. Do not use on glassware, dishes and utensils.

[It is designed for use on] [Use daily on] (the following) (hard, non-porous inanimate surfaces): *{insert use sites/surfaces from lists below}* – (where disinfection is required). A potable water rinse is required for food contact surfaces. Do not use on glasses, dishes and utensils.

(This product [or product name] (Oxivir Tb Wipes) (This product) [or These] (are) (is a) non-woven, disposable (towelette(s)) (wipe(s)), pre-saturated with Hydrogen Peroxide (based) disinfectant cleaner.

(This product [or product name] (Oxivir Tb Wipes) (This product) is a one-step<sup>1</sup> (hospital-use) germicidal (disinfectant) cleaner and deodorant (odor-counteractant) (odor neutralizer) (towelette) designed for general cleaning, (and) disinfecting, (and) (deodorizing) (of) hard, non-porous environmental surfaces.

(This product's [or product name] (Oxivir Tb Wipes) (This product) (Its) (non-dulling) (cleaning) (convenient) (easy-to-use) (effective) formula eliminates the time and labor normally required for rinsing.

(This product's [or product name] (Oxivir Tb Wipes) (This product) (Its) (non-dulling) (cleaning) (convenient) (easy-to-use) (effective) formula is designed for use on (Use daily on) (Use daily to clean and disinfect) (insert use sites/surfaces from lists below)

(Oxivir Tb Wipes') (This product's) (Its) non-abrasive formula is designed for use on (Use daily on) (the following) [insert use sites/surfaces from lists below]

(Oxivir Tb Wipes') (This product's) (Its) non-abrasive formula is designed for use on (Use daily on) hard, non-porous environmental surfaces.

(Oxivir Tb Wipes) (This product) (It) cleans by removing dirt, grime, dead skin, blood, urine, fecal matter, body oils and other (organic matter) (common soils) found in [insert use sites/surfaces from lists below] (or – any hard, non-porous washable surface where disinfection is required.)

(Oxivir Tb Wipes) (This product) (It) also eliminates odors, leaving (restroom) surfaces smelling clean and fresh. Use where odors are a problem.

(Oxivir Tb Wipes) (This product) cleans, disinfects and deodorizes hard, non-porous environmental (hospital) (medical) (dental) (laboratory) [insert use sites/surfaces from lists below] surfaces in one step<sup>1</sup> (with no rinsing required).



*{Note to Agency: Text appearing in [brackets] or (parenthesis) is done to show interchangeable or optional text. Commas may be added where needed. Any language which appears between {braces} and is italicized is for administrative purposes only and will NOT appear on final printed label. Listed uses and use sites can be used partially or in their entirety. }*

(Oxivir Tb Wipes) (This product) cleans, disinfects and deodorizes surfaces by killing odor-causing microorganisms. Its (non-dulling) (advanced) (efficient cleaning) (convenient) (easy-to-use) (effective) formula is designed for use on (Use it daily) on) [insert use sites/surfaces from lists below]

(Oxivir Tb Wipes) (This product) (It) (is designed for use on) (Use daily on) (the following) (hard, non-porous environmental (inanimate) surfaces): (insert use sites/surfaces from lists below) or – any hard, non-porous washable surface where disinfection is required.

#### **(CLAIMS & USES:)**

(This product) (Oxivir Tb Wipes) {*marketed product name*} cleans and disinfects {*insert organism name(s) from list in Efficacy Claims section*} including ESKAPE pathogens - Enterococcus faecium, Staphylococcus aureus, Klebsiella pneumoniae, Acinetobacter baumannii, Pseudomonas aeruginosa, and Enterobacter aerogenes

(This product) (Oxivir Tb Wipes) {*marketed product name*} kills ESKAPE organisms with a 1 minute kill time.

(This product) (Oxivir Tb Wipes) {*marketed product name*} cleans and disinfects, killing ESKAPE organisms with a 1-minute dwell time.

Kills ESKAPE bacteria in 1 minute

#### **(Hospitals/Health Care Facilities/Dental Offices/Life Science Laboratories:)**

[This product is a one-step<sup>1</sup> (hospital-use) (laboratory-use) germicidal disinfectant and deodorant (odor-counteractant) (odor neutralizer) designed for cleaning, (and) disinfecting, (deodorizing) (of) hard, non-porous inanimate surfaces. This product cleans by removing dirt, grime, food residue; dead skin, blood and other organic matter commonly found in {*insert use sites/surfaces from lists below*}. It also eliminates odors, leaving (restroom) surfaces smelling clean and fresh. Use where odors are a problem.]

[This product cleans, disinfects and deodorizes hard, non-porous inanimate (hospital) (medical) (dental) (laboratory) surfaces in one step<sup>1</sup> (with no rinsing required). [Its non-abrasive formula is designed for use on] [Use daily on] [(the following) (hard, non-porous inanimate surfaces : ) {*insert use sites/surfaces from lists below*}] (or any hard, non-porous washable surface where disinfection is required.) (found in) {*insert use sites/surfaces from lists below*} (It can be used to pre-clean and disinfect hospital items: {*insert use sites/surfaces from lists below*} (where disinfection is required). A potable water rinse is required when disinfecting food contact surfaces. Do not use on glasses, dishes and utensils.]

[This product can be used against bacteria, \*viruses, fungi, mycobacteria and mildew on hard non-porous surfaces found in: {*insert use sites from list below*}]

{or}

[(Oxivir Tb Wipes) (This product) can be used (in) (on) hard non-porous surfaces (of the following items) or (in the following areas): {*insert use sites/surfaces from lists below*}]

{or}

[This product has been developed to aid in the reduction of cross-contamination between treated surfaces (not only in hospitals (and healthcare facilities), but also) in: {*insert use sites from list below*}]

#### **(Animal Housing Facilities :)**

[This product cleans by removing dirt, grime, blood, urine, fecal matter and other common soils found in animal housing facilities, grooming facilities, farms, kennels, pet stores, veterinary clinics, laboratories or other small animal facilities. It (also) eliminates odors leaving surfaces smelling clean and fresh.]

[This product cleans, disinfects and deodorizes hard, non-porous environmental surfaces in one step<sup>1</sup>. [Its non-abrasive



*{Note to Agency: Text appearing in [brackets] or (parenthesis) is done to show interchangeable or optional text. Commas may be added where needed. Any language which appears between {braces} and is italicized is for administrative purposes only and will NOT appear on final printed label. Listed uses and use sites can be used partially or in their entirety. }*

formula is designed for use on] [Use daily on] [Use daily to clean and disinfect] (hard, non-porous surfaces (of):) *{insert use sites/surfaces from lists below}* (where disinfection is required.) found in (barns, pens and stalls) animal housing facilities.]

### ***{Areas} (Areas) (Use Sites)***

**[(This product) (can be) use(d) (on) (hard non-porous surfaces of the following areas))]**

- Airplanes
- Airports
- Ambulances [Emergency Medical] Transport Vehicles
- Ambulatory Surgical Centers [(ASC)]
- Amusement Parks
- [Animal] (and) [Pet] Housing
- [Animal] (and) [Pet] Grooming Facilities
- Animal Care Facilities
- Animal Holding Areas
- Animal Housing Facilities
- Animal Life Science Laboratories
- Animal Transportation Vehicles
- Anesthesia Rooms or Areas
- [Assisted Living] (and) [Full Care] Nursing Homes
- [Athletic] (and) [Recreational] Facilities
- Banquet Halls
- Barber Shops
- Bars
- Basements
- Bathrooms
- Beauty Salons
- Bedrooms
- Bowling Alleys
- Breeding Establishments
- Buses
- Butcher Shops
- Cafeterias
- Changing Areas
- Colleges
- Convenience Stores
- Convention Centers
- Correctional Facilities
- Cruise Ships
- Cafeterias
- CAT Lab[oratories]
- Central Service Areas
- Central Supply [Rooms] (and) [Areas]
- Colleges
- Commercial (and) [Institutional] Kitchens
- C[ritical] C[are] U[nits]
- Dairy Farms
- Day Care [Centers]
- Deli[catessen]s
- Dental Operatories
- [Dental] [Dentist's] Offices
- Dining Halls
- Dialysis Clinics
- Doctors' Offices
- Dorm[itories]
- Elevators
- E[mergency] R[oom]s
- Emergency Vehicles
- Eye Surgical Centers
- Exam[ination] Rooms
- Factories
- Farms
- Food Preparation and Processing Areas
- [Food] Processing Plants
- Food Service Establishments
- [Food Serving] (and) [Storage Areas]
- Front of Restaurants
- Funeral Homes
- Garages
- Gas Stations
- General Merchandise Stores
- Greenhouses
- Grocery Stores
- Gym[nasium]s
- Health Clubs
- Health Care [Settings] [Facilities]
- Home Centers
- Home Health Care Settings
- Homes
- Hospices
- Hospitals
- Hotels
- Industrial Facilities
- Institutional Kitchens (and) [Bathrooms]
- [Institutional] Laundromats
- Institutions
- I[ntensive] C[are] U[nits] [areas]
- Isolation Areas
- Kennels
- Kitchens
- Laboratories
- Laundromats
- Laundry Rooms
- Lab[oratories]
- Lavatories
- Libraries
- Locker Room[s] [Facilities]
- Lodging Establishments
- Long Term Care Facilities
- Lounges
- Malls
- Manufacturing [Plants] [Facilities]

*{Note to Agency: Text appearing in [brackets] or (parenthesis) is done to show interchangeable or optional text. Commas may be added where needed. Any language which appears between {braces} and is italicized is for administrative purposes only and will NOT appear on final printed label. Listed uses and use sites can be used partially or in their entirety. }*

- |  |                                  |  |
|--|----------------------------------|--|
| • Markets  | • Play [Areas] (and) [Rooms]     | • Shops                                |
| • [Medical] Clinics  | • [Police] (and) [Fire] Vehicles | • Shower Rooms                         |
| • Medical Facilities   | • Psychiatric Facilities         | • Sports Stadiums                      |
| • [Medical] [Doctor's] Offices                                   | • Public [Areas] (and) [Places]  | • Storage [Rooms] (and) [Areas]        |
| • [Newborn] [Neonatal] [Nursery] [Intensive] [Care] Units [NICU] | • Public Facilities              | • Subways                              |
| • Nurses' Stations   | • [Public] Restrooms             | • Surgery Rooms [Centers]              |
| • Nursing Homes  | • Public [Tele]phone [Booths]    | • Tattoo Parlors                       |
| • Nurseries  | • Radiology                      | • Toilet Areas                         |
| • Offices  | • Reception areas                | • Transportation Terminals             |
| • Office Buildings   | • Recovery Rooms                 | • Trains                               |
| • O[perating] R[oom]s  | • Recreational Facilities        | • Trolleys                             |
| • Orthopedics  | • Rehabilitation Centers         | • Universities                         |
| • Patient Rooms  | • Rental Cars                    | • Urgent Care [Centers] [Facilities]   |
| • Pediatric Intensive Care Units [PICU]                          | • Respiratory Therapy Rooms      | • Veterinary [Offices] [Waiting Rooms] |
| • Pet Animal Quarters  | • Rest Stops                     | • Waiting [Rooms] (and) [Areas]        |
| • Pet Shops  | • Restaurants                    | • Work Stations                        |
| • Pharmacies   | • Restroom Areas                 | • X-Ray Rooms                          |
| • Physical Therapy Rooms   | • Retail Businesses              | • Zoos                                 |
| • Physicians' Offices  | • School Buses                   |  |
|  | • Schools                        |  |
|  | • Shelters                       |  |

---

### ***{Surface Materials} (Surfaces)***

---

[This Product (Product Name) can be used on the following hard, nonporous surfaces:]

- |  |   |                                   |
|--|---|-----------------------------------|
| • Amalgamators                                       | • Bedrails                                      | • Compactors                      |
| • Anesthesia machines                                | • Commodes                                      | • Computers                       |
| • Animal equipment                                   | • Bedside tables                                | • [Computer] keyboards            |
| • Apex locators                                      | • Blood pressure cuffs and monitors             | • [Computer] monitors             |
| • Apheresis machines                                 | • Booster chairs                                | • Computer mouse                  |
| • Appliance exterior(s) [surfaces][                  | • Bottoms of pots and pans                      | • Computer screens                |
| • Appliance -or- cabinet knobs                       | • Burner trays                                  | • Cooler exteriors                |
| • Autoclaves   | • Cabinets                                      | • Cords                           |
| • Automatic feeders                                  | • Cages   | • Counter[top]s                   |
| • Bathroom doorknobs                                 | • Call boxes                                    | • [Crash] (and) [emergency] carts |
| • Baked enamel surfaces                              | • Car interiors                                 | • Cupboards                       |
| • Bassinets  | • Chairs  | • Cribs                           |
| • [Bathroom] fixtures                                | • Changing tables                               | • Dental countertops              |
| • [Bathroom] (and) [Kitchen] faucets (and) [handles] | • Charging stations                             | • Dental operatory surfaces       |
| • Bathrooms sinks and faucets                        | • Chemotherapy hoods                            | • Dental surfaces                 |
| • Bathroom surfaces                                  | • Furniture                                     | • [Dentists'] [Dental] chairs     |
| • [Bath]tubs   | • Closets                                       | • Dental unit instrument trays    |
| • Bed frames   | • [Common] hard, nonporous [household] surfaces | • Desk [tops]                     |
| • Bedpans  |   | • Diagnostic equipment            |

*{Note to Agency: Text appearing in [brackets] or (parenthesis) is done to show interchangeable or optional text. Commas may be added where needed. Any language which appears between {braces} and is italicized is for administrative purposes only and will NOT appear on final printed label. Listed uses and use sites can be used partially or in their entirety. }*

- Dialysis machines
- Dictating equipment [surfaces]
- Docking stations
- Door [handles] (and) [frames]
- Doorknobs
- Drainboards
- Drawers
- Dryers
- Dressing carts
- Elevator buttons
- Endodontic equipment
- [Exam] [Examination] tables
- Exercise] (and) [athletic] equipment
- Exercise mats
- Exhaust fans
- Exterior surfaces of air vents
- External surfaces of [medical] equipment
- [External surfaces of] [Ultrasound transducers] (and) [probes]
- Exterior (of) [toilet] (and) [urinal] surfaces
- External surfaces of [veterinary] equipment
- Exterior surfaces of watering appliances
- Faucets
- Fax machine [handles]
- Feed racks
- [Filing] (and) [medicine] cabinets
- Finished hardwood
- [Finished] (and) [painted] walls
- Finished windowsills
- Fixtures
- Flower buckets
- Food cases
- Food trays
- Footboards
- Freezer exteriors
- Furniture
- Garage surfaces
- [Garbage] disposals
- Garbage -or- trash cans
- Germ-prone [hard, nonporous] surfaces
- Glucometers
- [Grocery] carts
- Gurneys
- Gym[nastic] equipment
- Hampers
- Handheld [electronic] devices
- [Hand] rail[ing]s
- High touch surfaces
- Headboards
- Headsets
- High chairs [(non-food contact)]
- High touch surfaces
- Hoods
- [Hospital] [Medical] surfaces
- [Hospital] [Patient] bed (springs) (railings) (frames)
- Common Household Surfaces
- Hydrotherapy Tubs
- Infant incubators and care cribs
- Infant warmers
- [Instrument] Stands
- Isolettes
- IV [stands] [pumps] [poles]
- Keyboards
- Kid's play [structures] [equipment]
- [Kitchen] appliance exteriors
- Kitchen surfaces
- Laminated surfaces
- Lamps
- Laptops
- Light [fixtures] [switches] [panels]
- Light lens covers
- Lockers
- Mammography equipment
- [Medicine] (and) [filing] cabinets
- Medication carts
- Mirrors
- Mobile devices
- Mobile electronic equipment
- Mobile workstations
- M[agnetic] R[esonance] I[maging] equipment
- Nurse-call devices] (and) [buttons]
- Office machinery
- Operating room lights
- Operating Room Tables (Surfaces) (Positioning Pads)
- Operatory light switches
- Outside of appliances
- Oxygen hoods
- Oven exteriors at room temperature
- Overbed tables
- Packing benches
- Paddles
- Pagers
- Painted surfaces
- Patient monitoring equipment
- Patient support and delivery equipment
- Pens
- Phlebotomy trays
- Physical therapy [(PT)] equipment surfaces
- Phone cradles
- Piano keys
- Plastic and painted surfaces
- Plastic laundry [hampers] [baskets]
- Plastic salad bar sneeze guards
- Plastic surfaces
- Playpens
- [plastic] [vinyl] Privacy screens
- Portable toilets
- Power cords
- Pulse oximeters
- PVC tubing
- Range hoods
- Reception [counters] [desks]
- Recycling bins
- Refrigerator exteriors
- Respirators
- Respiratory therapy equipment
- Restroom fixtures

*{Note to Agency: Text appearing in [brackets] or (parenthesis) is done to show interchangeable or optional text. Commas may be added where needed. Any language which appears between {braces} and is italicized is for administrative purposes only and will NOT appear on final printed label. Listed uses and use sites can be used partially or in their entirety. }*

- |   |                                   |                              |
|---|-----------------------------------|------------------------------|
| • Scales  | • Stools                          | • Troughs                    |
| • Seats   | • Storage bins                    | • Vanity tops                |
| • Sequential compression devices                | • Stove[top]s at room temperature | • Vending machine surfaces   |
| • Shelves                                       | • Stretchers                      | • Veterinary [care] surfaces |
| • Shower(s) [curtains] [doors] [stalls] [walls] | • Support bars                    | • Vinyl tile                 |
| • Shower fixtures                               | • Strollers                       | • Walkers                    |
| • Side rails                                    | • Table[top]s                     | • Walls                      |
| • Signs   | • Tablet PCs                      | • Wash basins                |
| • Sink [basins]                                 | • Telephones                      | • Washable kitchen surfaces  |
| • Spine backboards                              | • Tiled walls                     | • Washable walls             |
| • Sports equipment                              | • T[omography] equipment          | • Wastebaskets               |
| • Stainless steel surfaces                      | • Tools                           | • Wheelchairs                |
| • Stall doors                                   | • Towel dispensers                | • Window blinds              |
| • Staplers                                      | • Toys                            | • Windows                    |
| • Stereo consoles                               | • Traction devices                | • Windshields                |
| • Stethoscopes                                  | • Trash cans                      | • Work benches               |
|   | • Tray tables                     | • X-ray equipment            |

Note: Prior to use on electronic equipment or components, (please) refer to the manufacturer's instructions (for appropriate use).

---

(It is) (Designed) For (daily) (use) (cleaning) (disinfecting) (on) (of) (medical) (hard, nonporous inanimate (environmental) surface(s) (materials)) (Compatible with):

- |                             |                                    |                        |
|-----------------------------|------------------------------------|------------------------|
| • Acrylic,                  | • glazed tile,                     | • sealed fiberglass,   |
| • baked enamel surfaces,    | • laminated surfaces,              | • sealed granite,      |
| • Corian®,                  | • linoleum,                        | • sealed marble,       |
| • Chrome,                   | • metal (except copper and brass), | • sealed mirror stone, |
| • non-food contact crystal, | • painted surfaces,                | • stainless steel,     |
| • finished terrazzo,        | • plastic (surfaces),              | • synthetic marble,    |
| • glass,                    | • glazed quarry tiles,             | • vinyl,               |
| • glazed ceramic (tile),    | • rubber,                          |                        |
| • glazed porcelain,         |                                    |                        |

[Not recommended for use on] {or} [avoid contact with]: brass or copper.

Note: This product is compatible with the listed materials. If product is intended to be used on other surfaces, it is recommended to test product by applying to a small discrete area to determine compatibility before proceeding with its use.

---

[This product] [{product name}] is formulated to be used against the following soils and stains:

- |                   |                  |                              |
|-------------------|------------------|------------------------------|
| • Beverage stains | • Dirt           | • Grease                     |
| • Blood           | • Fecal matter   | • Grime                      |
| • Body oils       | • Fingerprints   | • Heel [marks] [scuffs]      |
| • Body Fluids     | • Food spills    | • Juice stains               |
| • Coffee [stains] | • Food residues  | • Laboratory stains          |
| • Cosmetics       | • Food stains    | • Mold (and) [mildew] stains |
| • Dead skin       | • Fruit [stains] | • Mud                        |

*{Note to Agency: Text appearing in [brackets] or (parenthesis) is done to show interchangeable or optional text. Commas may be added where needed. Any language which appears between {braces} and is italicized is for administrative purposes only and will NOT appear on final printed label. Listed uses and use sites can be used partially or in their entirety. }*

- |   |   |  |
|---|---|--|
| <ul style="list-style-type: none"><li>• Common [soils] [stains]</li><li>• Organic matter</li><li>• Ink [marks]</li><li>• Pet stains</li></ul> | <ul style="list-style-type: none"><li>• Rust</li><li>• Smudges</li><li>• Soap Scum</li><li>• Tea [stains]</li></ul> | <ul style="list-style-type: none"><li>• Tough soils</li><li>• Urine [stains]</li><li>• Wine stains</li></ul> |
|---|---|--|

***{New and Improved Claims}***

*{Note to the reviewer: the following short claims might be inserted on the container label only for the period of 6 months after the launch}*

- [Better] [Improved] [New] [New and improved] [packaging]
- [New and improved]
- [New Claims]
- [New Claims and Faster Contact Times]
- [New Kill Claims]
- [New - Saves Time]

**DIRECTIONS FOR USE:**

It is a violation of Federal Law to use this product in a manner inconsistent with its labeling.

Not for personal cleansing. This is not a baby wipe. Do not flush in toilet.

*{Note to reviewer: The following paragraph will be used on labels that list medical devices as defined by the FDA, and is manufactured accordingly.}*

(This product is not to be used as a terminal sterilant/high level disinfectant on any surface or instrument that (1) is introduced directly into the human body, either into or in contact with the blood stream or normally sterile areas of the body, or (2) contacts intact mucous membranes but which does not ordinarily penetrate the blood barrier or otherwise enter normally sterile areas of the body. This product may be used to pre-clean or decontaminate critical or semi-critical medical devices prior to sterilization or high level disinfection.)

*{or}*

This product is not for use on critical and semi-critical medical device surfaces

**(CLAIMS AND ORGANISMS:)**

When used as directed, this product is effective against a wide variety (broad-spectrum) of pathogenic microorganisms (including bacteria, antibiotic resistant bacteria, *[list of antibiotic resistant organisms is below, in Efficacy Claims section, under subheading Antibiotic-Resistant (Strains of) Bacteria]*, viruses, and fungi). (See reference sheet (enclosed in each case) for a complete list of organisms.)

**(HOSPITAL DISINFECTANT:)**

**BACTERICIDAL:** *{Note to reviewer: Only one of the following statements will be on the product label}*

(in the presence of 5% serum load and 1-minute contact time at 20°C (68°F) on hard, non-porous environmental surfaces.)

*{or}*  
(1-minute contact time)

*{or}*  
(1 minute)

{Note to Agency: Text appearing in [brackets] or (parenthesis) is done to show interchangeable or optional text. Commas may be added where needed. Any language which appears between {braces} and is italicized is for administrative purposes only and will NOT appear on final printed label. Listed uses and use sites can be used partially or in their entirety. }

<b>(Bactericidal Activity):</b>		
<b>(Organism)</b>	<b>(ATCC Number)</b>	<b>(Contact Time)</b>
<i>Staphylococcus aureus</i>	(ATCC 6538)	1 minute
<i>Pseudomonas aeruginosa</i>	(ATCC 15442)	1 minute
<i>Salmonella enterica</i> , formerly known as <i>Salmonella choleraesuis</i>	(ATCC 10708)	1 minute
<i>Acinetobacter baumannii</i>	(ATCC 19606)	1 minute
<i>Enterococcus faecium</i>	(ATCC 51559)	1 minute
<i>Escherichia coli</i> O157:H7	(ATCC 35150)	1 minute
<i>Klebsiella aerogenes</i> , (formerly <i>Enterobacter aerogenes</i> )	(ATCC 13048)	1 minute
<i>Klebsiella pneumoniae</i>	(ATCC 4352)	1 minute
<i>Legionella pneumophila</i>	(ATCC 33153)	1 minute
<i>Listeria monocytogenes</i>	(ATCC 19111)	1 minute
<i>Shigella dysenteriae</i>	(ATCC 11835)	1 minute
<b>(Antibiotic-Resistant (Strains of) Bacteria):</b>		
<i>Enterococcus faecalis</i> (Resistant to Vancomycin (VRE))	(ATCC 51575)	1 minute
<i>Escherichia coli</i> , carbapenem resistant (CRE)	(ATCC BAA-2469)	1 minute
<i>Escherichia coli</i> with extended beta-lactamase resistance (ESBL)	(ATCC BAA-196)	1 minute
<i>Klebsiella aerogenes</i> , (formerly <i>Enterobacter aerogenes</i> ), Multi-Drug Resistant (BEI UCI15)	(ATCC BAA-2356)	1 minute
<i>Klebsiella pneumoniae</i> , carbapenem resistant (CRKP)	(ATCC BAA-1705)	1 minute
Extended spectrum beta-lactamase <i>Klebsiella pneumoniae</i> (NDM-1)	(ATCC 700603)	1 minute
<i>Streptococcus pneumoniae</i> , Penicillin-resistant (PRSP)	(ATCC 700677)	1 minute
Multidrug-resistant (MDR) <i>Pseudomonas aeruginosa</i>	(ATCC BAA-2108)	1 minute
<i>Staphylococcus aureus</i> (Resistant to Methicillin (MRSA))	(ATCC 33592)	1 minute
<i>Staphylococcus aureus</i> (CA-MRSA), (Community Associated Methicillin Resistant) (NARSA NRS 384)(Genotype USA300)		1 minute
<i>Staphylococcus aureus</i> (CA-MRSA), (Community Associated Methicillin Resistant) (NARSA NRS 123)(Genotype USA400)		1 minute
<b>*VIRUCIDAL: {Note to reviewer: Only one of the following statements will be on the product label}</b>		
(in the presence of 5% serum load and 1-minute contact time at 20°C (68°F) on hard, non-porous environmental surfaces.)		
{or}		
(1-minute contact time)		
{or}		
(1 minute)		
<b>(*Viruses (*Virucidal Activity)):</b>		
<b>(Organism)</b>	<b>(ATCC Number)</b>	<b>(Contact Time)</b>
Adenovirus type 8	(ATCC VR-1368)	1 minute
Hepatitis B Virus (HBV) (Acquired from Hepadnavirus Testing)		1 minute
Hepatitis C Virus (HCV) (Acquired from National Veterinary Services Laboratories)		1 minute
Herpes Simplex Virus, Type 1 (HSV-1)	(ATCC VR-733)	1 minute
Herpes Simplex Virus, Type 2 (HSV-2)	(ATCC VR-734)	1 minute
HIV-1 (AIDS Virus), Strain HTLV-III <sub>B</sub> (HIV-1) (Acquired from Adv. Biotechnologies, Inc.)		1 minute
Human Coronavirus	(ATCC VR-740)	1 minute
Influenza A Virus	(ATCC VR-544)	1 minute
Middle Eastern Respiratory Syndrome Coronavirus (MERS-CoV) (Strain EMC/2012)		1 minute
Norovirus, (Feline Calicivirus as the surrogate)	(ATCC VR-782)	1 minute
Poliovirus Type 1, Strain Chat	(ATCC VR-1000)	1 minute
Respiratory Syncytial virus (RSV)	(ATCC VR-26)	1 minute
Rhinovirus Type 14	(ATCC VR-284)	1 minute
Rotavirus WA (Acquired from University of Ottawa)		1 minute
SARS-Related Coronavirus 2 (SARS-CoV-2) (cause of COVID-19) (USA-WA1/2020)		1 minute (15 seconds)
Vaccinia Virus	(ATCC VR-156)	1 minute



{Note to Agency: Text appearing in [brackets] or (parenthesis) is done to show interchangeable or optional text. Commas may be added where needed. Any language which appears between {braces} and is italicized is for administrative purposes only and will NOT appear on final printed label. Listed uses and use sites can be used partially or in their entirety. }

<b>(*Veterinary Viruses:)</b>		
Avian Influenza A Virus (H3N2)	(ATCC VR-2072)	1 minute
Feline Calicivirus, Strain F9	(ATCC VR-782)	1 minute
<b>*VIRUCIDAL:</b> {Note to reviewer: Only one of the following statements will be on the product label}		
(in the presence of 5% serum load and 15-second contact time at 20°C (68°F) on hard, non-porous environmental surfaces.)		
{or}		
(15-second contact time on hard non-porous surfaces)		
{or}		
(15 seconds on hard non-porous surfaces)		
SARS-Related Coronavirus 2 (SARS-CoV-2) (cause of COVID-19) (USA-WA1/2020)		15 seconds
<b>Non-Food Contact Surface Sanitizer for hard non-porous surfaces:</b> {Note to reviewer: Only one of the following statements will be on the product label}		
(in the presence of 5% serum load and 30-second contact time at 20°C (68°F) on hard, non-porous environmental surfaces.)		
{or}		
(in the presence of a 5% serum load and 30-second contact time (at 20°C (68°F)) on hard, non-porous environmental surfaces.)		
{or}		
(30-second contact time on hard, non-porous environmental surfaces.))		
{or}		
(30 seconds on hard, non-porous environmental surfaces.)		
<b>(Organism)</b>	<b>(ATCC Number)</b>	<b>(Contact Time)</b>
<i>Enterococcus faecalis</i> , (Resistant to Vancomycin [VRE])	(ATCC 51575)	30 seconds
<i>Escherichia coli</i> O157:H7, (ATCC 35150)	(ATCC 35150)	30 seconds
<i>Klebsiella pneumoniae</i> ,	(ATCC 4352)	30 seconds
<i>Pseudomonas aeruginosa</i> ,	(ATCC 15442)	30 seconds
<i>Salmonella enterica</i> , (formerly known as <i>Salmonella choleraesuis</i> )	(ATCC 10708)	30 seconds
<i>Staphylococcus aureus</i> ,	(ATCC 6538)	30 seconds
<i>Staphylococcus aureus</i> , (Resistant to Methicillin [MRSA])	(ATCC 33592)	30 seconds
<b>TUBERCULOCIDAL:</b>		
(in the presence of 5% serum load and 5-minute contact time at 20°C (68°F) on hard, non-porous environmental surfaces.)		
<b>(Organism)</b>	<b>(ATCC Number)</b>	<b>(Contact Time)</b>
<i>Mycobacterium bovis</i> (Tb) (OT 451C150)		5 minutes
<b>FUNGICIDAL:</b> {Note to reviewer: Only one of the following statements will be on the product label}		
<i>Trichophyton interdigitale</i> (ATCC 9533) (formerly <i>Trichophyton mentagrophytes</i> ) (the fungus which causes Athlete's Foot) and <i>Candida albicans</i> (ATCC 10321) in the presence of a 5% serum load and 3-minute contact time at 20°C (68°F) when used as directed on hard, non-porous surfaces found in bathrooms, shower stalls, locker rooms, or other clean, hard, non-porous, surfaces commonly contacted by bare feet.)		
{or}		
(This product is fungicidal against the pathogenic fungi, <i>Trichophyton interdigitale</i> (ATCC 9533) (formerly <i>Trichophyton mentagrophytes</i> ) (the fungus which causes Athlete's Foot) and <i>Candida albicans</i> (ATCC 10321) when used as directed		



{Note to Agency: Text appearing in [brackets] or (parenthesis) is done to show interchangeable or optional text. Commas may be added where needed. Any language which appears between {braces} and is italicized is for administrative purposes only and will NOT appear on final printed label. Listed uses and use sites can be used partially or in their entirety. }

on hard, non-porous surfaces found in bathrooms, shower stalls, locker rooms, or other clean, hard, non-porous, surfaces commonly contacted by bare feet.)

{or}

(This product is fungicidal against the pathogenic fungi, *Trichophyton interdigitale* (ATCC 9533) (formerly *Trichophyton mentagrophytes*) (the fungus which causes Athlete's Foot) and *Candida albicans* (ATCC 10321) when used as directed on hard, non-porous surfaces.)

{or}

(in the presence of 5% serum load and 3-minute contact time at 20°C (68°F) on hard, non-porous environmental surfaces.)

{or}

(3-minute contact time on hard non-porous surfaces)

{or}

(3 minutes on hard non-porous surfaces)

(Organism)	(ATCC Number)	(Contact Time)
<i>Trichophyton interdigitale</i> (formerly <i>Trichophyton mentagrophytes</i> )	(ATCC 9533)	3 minutes
<i>Candida albicans</i>	(ATCC 10231)	3 minutes
<b>**FUNGICIDAL:</b> {Note to reviewer: Only one of the following statements will be on the product label}		
(This product is fungicidal against <i>Candida auris</i> (CDC AR-0381) with a 5-minute contact time.)		
{or}		
(5-minute contact time on hard non-porous surfaces)		
{or}		
(5 minutes on hard non-porous surfaces)		
(Organism)	(ATCC Number)	(Contact Time)
<i>Candida auris</i>	(CDC AR-0381)	5 minutes

**Malodor(s) (Activity) (Counteractancy)** – eliminates (destroys) odors and odor-causing bacteria on hard, nonporous surfaces in restroom areas, behind and under sinks and counters, and storage areas (and other places where bacterial growth can cause malodors).

### ***{Claims against Emerging Viral Pathogens}***

*This product qualifies for emerging viral pathogen claims per the EPA's 'Guidance to Registrants: Process for Making Claims Against Emerging Viral Pathogens not on EPA-Registered Disinfectant Labels' when used in accordance with the appropriate use directions indicated below.*

*This product meets the criteria to make claims against certain emerging viral pathogens from the following viral categories:*

- *Enveloped viruses*
- *Large, non-enveloped viruses*
- *Small, non-enveloped viruses*

<i>For an emerging viral pathogen that is a/an...</i>	<i>...follow the directions for use for the following organisms on the label:</i>
<i>Enveloped virus</i>	<ul style="list-style-type: none"> <li>• Poliovirus type 1 (ATCC VR-1000), (Strain Brunhilde)</li> </ul>
<i>Large, Non-Enveloped Viruses</i>	<ul style="list-style-type: none"> <li>• Feline Calicivirus (ATCC VR-782) / Norovirus</li> <li>• Poliovirus type 1 (ATCC VR-1000), Strain Brunhilde</li> </ul>
<i>Small, Non-Enveloped Viruses</i>	

*{The statements shall be made only through the following communications outlets: technical literature distributed exclusively to health care facilities, physicians, nurses and public health officials, "1-800" consumer information services, social media sites and company websites (non-label related). These statements shall not appear on marketed (final print) product labels.}*

#### ***{Acceptable claim language:}***

*{Product name} has demonstrated effectiveness against viruses similar to {name of emerging virus} on hard, non-porous surfaces. Therefore, (this product) ({Product name}) can be used against {name of emerging virus} when used in accordance with the directions for use against {insert name of supporting virus(es) from list above} on hard, non-porous surfaces. Refer to the [CDC or OIE] website at {pathogen-specific website address} for additional information.*

*{or}*

*{Name of illness/outbreak} is caused by {name of emerging virus}. {Product name} kills similar viruses and therefore can be used against {name of emerging virus}. when used in accordance with the directions for use against [Poliovirus type 1] [Feline Calicivirus] on hard, non-porous surfaces. Refer to the [CDC or OIE] website at {website address} for additional information.*

#### **For Use as a (One-Step<sup>1</sup>) (Cleaner)/(Disinfectant):**

1. Pre-clean visibly soiled areas.
2. Pull towelette from dispenser (canister) (bucket) and wipe hard, non-porous environmental surfaces.
3. All surfaces must remain visibly wet for 1 minute. *{Only include following directions when these claims appear on product label}* (Use a 5-minute contact time for *Mycobacterium bovis* (Tb).) (Use a 3-minute contact time for *Trichophyton interdigitale* (formerly *Trichophyton mentagrophytes*) and *Candida albicans*) (and 5-minute contact time for *Candida auris*). (Use a 15-second contact time for SARS-CoV-2 on hard non-porous surfaces)
4. Allow to air dry (or rinse (with potable water if necessary)).

Note: All food contact surfaces must be rinsed with potable water. Do not use on glassware, utensils, or dishes.

*{Note to Agency: Text appearing in [brackets] or (parenthesis) is done to show interchangeable or optional text. Commas may be added where needed. Any language which appears between {braces} and is italicized is for administrative purposes only and will NOT appear on final printed label. Listed uses and use sites can be used partially or in their entirety. }*

**For Use as (Daily) (Bathroom) (Restroom) (Shower Rooms) (Locker Rooms) (Athletic Equipment) (One-Step<sup>1</sup>) Cleaner/Disinfectant:**

1. Pre-clean visibly soiled areas.
2. Pull towelette from dispenser (canister) (bucket) and wipe hard, non-porous environmental surfaces.
3. To disinfect, all surfaces must remain visibly wet for one (1) minute. *{Only include following directions when these claims appear on product label}* (Use a 5-minute contact time for *Mycobacterium bovis* (Tb).) (Use a 3-minute contact time for *Trichophyton interdigitale* (formerly *Trichophyton mentagrophytes*) and *Candida albicans*) (and 5-minute contact time for *Candida auris*.) (Use a 15-second contact time for SARS-CoV-2 on hard non-porous surfaces)
4. Wipe surfaces dry (or rinse) (or allow to air dry).

**\*KILLS HIV AND HCV and HBV ON PRE-CLEANED ENVIRONMENTAL SURFACES/OBJECTS**

**PREVIOUSLY SOILED WITH BLOOD/BODY FLUIDS** in health care settings (Hospitals, Nursing Homes) and other settings in which there is an expected likelihood of soiling of inanimate surfaces/objects with blood/body fluids, and in which the surfaces/objects likely to be soiled with blood/body fluids can be associated with the potential for transmission of Human Immunodeficiency Virus Type 1 (HIV-1) (associated with AIDS) Hepatitis B Virus (HBV), or Hepatitis C Virus (HCV).

**SPECIAL INSTRUCTIONS FOR CLEANING AND DECONTAMINATING AGAINST HIV-1 (AIDS Virus), HBV OR HCV OF SURFACES/OBJECTS SOILED WITH BLOOD/BODY FLUIDS:**

**Personal Protection:** Disposable latex or vinyl gloves, gowns, face masks, and eye coverings must be worn during all cleaning of body fluids, blood, and decontamination procedures.

**Cleaning Procedures:** Blood/body fluids must be thoroughly cleaned from surfaces/objects before application of this product.

**Contact Time:** Allow surface to remain visibly wet for 1-minute to kill HIV-1, HBV and HCV. *{Only include following directions when these claims appear on product label}* (Use a 5-minute contact time for *Mycobacterium bovis* (Tb).) (Use a 3-minute contact time for *Trichophyton interdigitale* (formerly *Trichophyton mentagrophytes*) and *Candida albicans*) (and 5-minute contact time for *Candida auris*.) (Use a 15-second contact time for SARS-CoV-2 on hard non-porous surfaces)

**Disposal of Infectious Material:** Blood/body fluids must be autoclaved and disposed according to Federal, State and local regulations for infectious waste disposal.

**For Use as a Tuberculocide at 20°C (68°F):**

1. Pre-clean visibly soiled areas.
2. Pull towelette from dispenser (canister) and wipe hard, non-porous environmental surfaces.
3. Allow the surface to remain visibly wet for 5 minutes. Use additional towelettes if needed to ensure the correct wet contact time.
4. Wipe surfaces dry (or rinse) (or allow to air dry).
5. Change towelette after each use (application).

**To Use as a Fungicidal Against *Trichophyton interdigitale* and *Candida albicans*:**

*{The following statement must be used on labels making claims against *Candida auris*}*

*{\*\*For *Candida auris*, please see special instructions.}*

1. Pre-clean visibly soiled areas.
2. Pull towelette from dispenser (canister) and wipe hard, non-porous environmental surfaces.
3. All surfaces must remain visibly wet for 3 minutes. Use additional towelettes if needed to ensure the correct wet contact time.
4. Wipe surfaces dry (or rinse) (or allow to air dry).

*{The following set of directions must be used on labels with claims against *Candida auris*}*

**\*\*Special Instructions for Cleaning Prior to Disinfection against *Candida auris***

**Personal Protection:** Wear appropriate barrier protection such as gloves, gowns, masks or eye covering.

**Cleaning Procedure:** Fecal matter/waste must be thoroughly cleaned from surfaces/objects before disinfection by application with a clean cloth, mop, and/or sponge saturated with the product. Pre-cleaning is to include vigorous wiping and/or scrubbing and all visible soil is removed. Surfaces in patient rooms are to be cleaned in an appropriate manner, such as from right to left or left to right, on horizontal surfaces, and top to bottom, on vertical surfaces, to minimize spreading the organism. Restrooms are to be cleaned last. Do not reuse soiled cloths.

*{Note to Agency: Text appearing in [brackets] or (parenthesis) is done to show interchangeable or optional text. Commas may be added where needed. Any language which appears between {braces} and is italicized is for administrative purposes only and will NOT appear on final printed label. Listed uses and use sites can be used partially or in their entirety. }*

**Infectious Materials Disposal:** Materials used in the cleaning process that may contain feces/wastes are to be disposed of immediately in accordance with local regulations for infectious materials disposal.

**Disinfection Procedure:** Pre-clean visibly soiled areas. Wipe hard, non-porous environmental surfaces with towelette. Allow the surface to remain visibly wet for 5 minutes. Use additional towelettes if needed to ensure the correct wet contact time. Wipe surfaces or let air dry.

**For use as a Non-Food Contact Sanitizer:**

1. Pre-clean visibly soiled areas.
2. Pull towelette from dispenser (canister) and wipe hard, non-porous environmental surfaces.
3. Allow the surface to remain visibly wet for 30 seconds.
4. Wipe surfaces dry (or rinse) (or allow to air dry).
5. Change towelette after each use (application).

**For Use as a Cleaner and/or Deodorizer:**

Pull towelette from dispenser (canister) and wipe hard, non-porous environmental surfaces. Allow to air dry (or rinse (with potable water if necessary)).

**Animal Housing Facilities (Including Veterinary Clinics, (Equine) Farms, Livestock, Swine and Poultry Houses): For cleaning and disinfecting the following hard, non-porous surfaces: feeding and watering equipment, utensils, instruments, cages, kennels, stables, catteries, etc.**

1. Remove all animals and feeds from premises, animal transportation vehicles, crates, etc.
2. Remove all litter, droppings and manure from floors, walls and surfaces of facilities (including pens, chutes, and barns) occupied or traversed by animals.
3. Empty all troughs, racks, and other feeding or watering appliances.
4. Thoroughly clean all surfaces with soap or detergent and rinse with potable water. Pull towelette from dispenser (canister) and wipe hard, non-porous environmental surfaces.
5. All surfaces must remain visibly wet for one (1) minute. *{Only include following directions when these claims appear on product label}* (Use a 5-minute contact time for *Mycobacterium bovis* (Tb).) (Use a 3-minute contact time for *Trichophyton interdigitale* (formerly *Trichophyton mentagrophytes*) and *Candida albicans*) (and 5-minute contact time for *Candida auris*.) (Use a 15-second contact time for SARS-CoV-2 on hard non-porous surfaces).
6. Allow to air dry (or rinse (with potable water if necessary)).
7. Ventilate buildings and other closed spaces.
8. Do not house animals or employ equipment until treatment has been set or dried.

NOTE: Not for use on handling and restraining equipment such as leashes, muzzles, halters or ropes, as well as forks, shovels, and scrapers used for removing litter and manure.

**(Allergen Destruction)**

**To Clean and Destroy Specified Allergens:** Spray [Spray/Apply], wait 1 minute, and wipe excess. (Allow to air dry) (or) (rinse). (If streaking is observed, wipe with a clean, damp (cloth or) paper towel.)

Allergens:

- Cockroach matter -or- particles
- Dust mite matter -or- particles
- Pet dander -or- dog and cat dander

---

**(Packaging Opening Instructions:)**

**(Rigid Can with EZ-Open Lid)**

Dispenser Directions: Do Not Remove Lid. Lift lid to expose dispenser and seal film. Using finger, push through film at vent hole and remove film. Pull wipe up from center of roll and pull towards you to insert in single wipe dispenser. Simply pull wipe at angle towards you to dispense one wipe at a time. To dispense multiple wipes, pull wipe away from you, out of single wipe dispenser and pull up. Separate wipe at perforation. When finished, close lid to retain moisture.

*{Note to Agency: Text appearing in [brackets] or (parenthesis) is done to show interchangeable or optional text. Commas may be added where needed. Any language which appears between {braces} and is italicized is for administrative purposes only and will NOT appear on final printed label. Listed uses and use sites can be used partially or in their entirety. }*

To Open New Package: No Need to Remove Lid. Lift lid to expose dispenser and seal film, which covers wipe roll. Simply puncture and tear film at the vent holes and remove film from canister.

To Open Package: Open lid/flap and pull out wipe at an angle from center of roll. When finished, close lid to retain moisture.

#### **(Rigid Can with Traditional-Open Lid)**

Dispenser Directions: Remove lid to expose dispenser and seal film. Remove film. Pull wipe up from center of roll and thread through lid. Replace lid. Pull wipe at angle towards you to dispense one wipe at a time. Separate wipe at perforation. When finished, close lid to retain moisture.

To Open New Package: Remove lid to expose dispenser and seal film, which covers wipe roll. Remove film. Thread wipe through lid. Replace lid.

To Open Package: Open lid/flap and pull out wipe at an angle from center of roll. When finished, close lid to retain moisture.

#### **(Stand Up Pouch)**

Dispenser Directions: Remove film seal from wipe access port. Pull first wipe from center of roll. Insert first wipe in to easy thread dispenser. Insert easy thread dispenser into port and make a 1/4 turn clockwise to lock in place. Pull wipes at an angle to dispense. Dispense as many as required for job and break off at perforation. After use, store next wipe in easy thread dispenser cavity and snap lid closed to retain moisture.

To Open New Package: Remove film seal (from orifice) (over/from cap). Twist dispenser counterclockwise and remove to access wipe roll. Grab first wipe from center of roll. Insert wipe in dispenser orifice. Insert dispenser, twist clockwise until it locks.

To Open Package: Open lid/flap and pull out wipe at an angle from center of roll. When finished, close (click) (snap) lid/flap (closed) to retain moisture.

#### **(FlatPack)**

[For re-sealable flatpack, transport pack or softpack, flexible package:]

[To Open Package:]

1. Open [click-lock] [closure] and peel back [or] [remove] seal.
2. Pull out [one] wipe [sheet] [at a time][, use as directed].
3. [When finished,] [firmly] close [click-lock] [closure] to retain moisture [to prevent drying between uses].

#### **(Re-sealable soft pack:)**

1. Remove the seal (from the place shown on the label).
2. Remove one sheet at a time.
3. Close the seal (to prevent drying between uses).

---

## **[Storage and Disposal for Institutional Use Products]**

### **Storage and Disposal**

*{Note to Agency: Text appearing in [brackets] or (parenthesis) is done to show interchangeable or optional text. Commas may be added where needed. Any language which appears between {braces} and is italicized is for administrative purposes only and will NOT appear on final printed label. Listed uses and use sites can be used partially or in their entirety. }*

Do not contaminate water, food or feed by storage or disposal. Store in original container in areas inaccessible to small children. Keep securely closed. Do not allow product to freeze.

## **PESTICIDE STORAGE**

Store in a dry, well-ventilated area away from chemicals, direct light, heat or open flame. Do not mix with other cleaning or disinfecting products.

### **Pesticide Disposal:**

Store in original container in areas inaccessible to small children. Keep securely closed.

### **Container Handling:**

**NONREFILLABLE READY-TO-USE FORMULATIONS:** *{Note to reviewer: The following text will be used on nonrefillable RTU container labels:}*

Nonrefillable container. Do not reuse or refill this container. Wrap empty container and put in trash(, or offer for recycling if available).

**REFILLABLE CONTAINERS:** *{Note to reviewer: The following paragraph will be used on labels for refillable containers:}*

Refillable container. Refill this container with *[insert one of the following brand names: Oxivir Wipes, Oxivir Tb Wipes]* only. Do not reuse this container for any other purpose.

Cleaning the container before final disposal is the responsibility of the person disposing of the container. Cleaning before refilling is the responsibility of the refiller.

*{Note to reviewer: One of the following statements will be used, depending on the type of container}*

*{For product supplied in refillable or non-refillable containers}*

**Towelette Storage/Disposal:** Dispose of (wipe) (towelette) (cloth) in trash after use. Do not flush. Tightly close lid between uses to retain moisture.

*{For product supplied in resealable packages:}*

**Towelette Storage/Disposal:** Dispose of (wipe) (towelette) (cloth) in trash after use. Do not flush. Reseal container label between uses to retain moisture.

(To clean the container prior to final disposal, empty the remaining contents from this container into application equipment or mix tank. Fill the container about 10 percent full with water. Agitate vigorously or recirculate water with the pump for 2 minutes. Pour or pump rinsate into application equipment or rinsate collection system. Repeat this rinsing procedure two more times.)

---

## **[Storage and Disposal for Residential Only Use Products]**

## **Storage and Disposal**

**PESTICIDE [PRODUCT] STORAGE:** Store in original container in areas inaccessible to small children. Keep securely closed.

**PESTICIDE [PRODUCT] DISPOSAL:** Nonrefillable container. Do not reuse or refill this container. 3 Wrap [container] and put in trash or offer for recycling if available.

**CONTAINER HANDLING:** Nonrefillable container. Do not reuse or refill this container. Wrap [container] and put in trash or



{Note to Agency: Text appearing in [brackets] or (parenthesis) is done to show interchangeable or optional text. Commas may be added where needed. Any language which appears between {braces} and is italicized is for administrative purposes only and will NOT appear on final printed label. Listed uses and use sites can be used partially or in their entirety. }

offer for recycling if available.

#### ENVIRONMENTAL HAZARDS (for labels with veterinary use patterns)

This product is toxic to birds, fish and aquatic invertebrates. Caution should be used when applying indoors because pets may be at risk.

**{Graphics - May be placed anywhere on the label}**



\*\*\* QRD and designs are trademarks of Allied Hygiene Systems, Ltd. used under license

\*\*\*\*A graphic or logo depicting any approved use site mentioned above on the Mast Label may appear on the product label



Not a baby wipe  
Not for personal use



One-step cleaning  
and disinfection



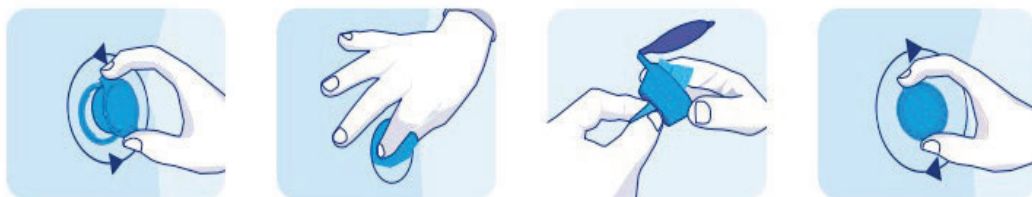
For hard, non-porous  
surfaces



{Note to Agency: Text appearing in [brackets] or (parenthesis) is done to show interchangeable or optional text. Commas may be added where needed. Any language which appears between {braces} and is italicized is for administrative purposes only and will NOT appear on final printed label. Listed uses and use sites can be used partially or in their entirety. }



{For subregistrations, the subregistrants company logo will appear on label}



**LIFT THE CAP, PULL WIPE, WIPE SURFACE**

*{Footnotes for Symbols Mentioned in Label}*

++ Claims against non-living allergens

\*\* *Candida auris* Use Directions

£Influenza A

\* Viruses

<sup>1</sup> when used according to disinfection directions

<sup>2</sup>*Staphylococcus aureus, Pseudomonas aeruginosa*

*{Note to Agency: Text appearing in [brackets] or (parenthesis) is done to show interchangeable or optional text. Commas may be added where needed. Any language which appears between {braces} and is italicized is for administrative purposes only and will NOT appear on final printed label. Listed uses and use sites can be used partially or in their entirety. }*

\*Rhinovirus Type 37

*{Note to Agency: Text appearing in [brackets] or (parenthesis) is done to show interchangeable or optional text. Commas may be added where needed. Any language which appears between {braces} and is italicized is for administrative purposes only and will NOT appear on final printed label. Listed uses and use sites can be used partially or in their entirety. }*

## REFERENCE SHEET

# OXIVIR<sup>®</sup> TB Wipes

*{Insert verbatim any Claims statements from the Claims sections from above.}*

### **DIRECTIONS FOR USE:**

It is a violation of Federal Law to use this product in a manner inconsistent with its labeling.

*{Insert verbatim any set(s) of Directions for Use from above.}*

See the container label for use directions and additional required information for, (First Aid,) (Precautionary Statements,) (Environmental Hazards) (and) (Storage and Disposal).

EPA Reg. No. 70627-60

[Manufactured for:] © 2020 Diversey, Inc., P.O. Box 19747, Charlotte, NC 28219-0747 U.S.A. All Rights Reserved.