

UNITED STATES ENVIRONMENTAL PROTECTION AGENCY
WASHINGTON, D.C. 20460



OFFICE OF
CHEMICAL SAFETY AND
POLLUTION PREVENTION

MAR - 7 2014

United Phosphorous, Inc.
c/o Ms. Leanne Pruett
Pyxis Regulatory Consulting, Inc.
4110 136th St. NW
Gig Harbor, WA 98332

Subject: Amended label to add pollinator protection language
Product Name: Lancer Gold
EPA Reg. No. 70506-242
EPA Decision No. 487873
Submission dated February 12, 2014; resubmission dated March 7, 2014

Dear Ms. Pruett:

The labeling referred to above, submitted in connection with registration under the Federal Insecticide, Fungicide, and Rodenticide Act is acceptable. A stamped copy of your labeling is enclosed for your records. This labeling supersedes all previously accepted labeling. You must submit one (1) copy of the final printed labeling before you release the product for shipment with the new labeling. See 40 CFR 156.10(a)(6).

Under 40 CFR 152.130(d), EPA may establish dates by which all product distributed or sold by the registrant must bear revised labeling. The following paragraphs set forth the schedule for ensuring that that your product bears revised labeling within a reasonable time period:

- Any product released for shipment after 2/28/14 must bear the new label.

If these conditions are not complied with, EPA will take appropriate action against this registration. If you have any questions please contact Julie Chao at 703-308-8735 or chao.julie@epa.gov.

Regards,

A handwritten signature in black ink that reads "Venus Eagle".

Venus Eagle, Product Manager (01)
Insecticide-Rodenticide Branch
Registration Division (7505P)

GROUP

1

&

4A

INSECTICIDES

LANCER GOLD[®] Insecticide

A dry flowable mixture of two systemic insecticides for use in the production and maintenance of agricultural and horticultural crops on farms or in the landscape.

ACTIVE INGREDIENTS:

Acephate: (O,S-Dimethyl acetylphosphoramidothioate)..... 50.0%

Imidacloprid - 1-[(6-Chloro-3-pyridinyl)methyl]-N-nitro-2-imidazolidinimine 1.8%

OTHER INGREDIENTS..... 48.2%

TOTAL 100%

Contains 0.5 lb. acephate and 0.018 lb. imidacloprid per pound of product.

KEEP OUT OF REACH OF CHILDREN**CAUTION**

Si usted no entiende la etiqueta, busque a alguien para que se la explique a usted en detalle.
(If you do not understand the label, find someone to explain it to you in detail.)

| FIRST AID | |
|----------------------------------------------------------------------------------------------------------------------------------------------------------------------------------------------------------------------------|-------------------------------------------------------------------------------------------------------------------------------------------------------------------------------------------------------------------------------------------------------------------------------------------------------------------------------------------|
| If swallowed | <ul style="list-style-type: none"> • Call poison control center or doctor immediately for treatment advice. Have person sip a glass of water if able to swallow. • Do not induce vomiting unless told to by a poison control center or doctor. • Do not give anything by mouth to an unconscious person. |
| If on skin or clothing | <ul style="list-style-type: none"> • Take off contaminated clothing. • Rinse skin immediately with plenty of water for 15-20 minutes. • Call a poison control center or doctor for treatment advice. |
| If in eyes | <ul style="list-style-type: none"> • Hold eye open and rinse slowly and gently with water for 15-20 minutes. • Remove contact lenses, if present, after the first 5 minutes, then continue rinsing eye. • Call a poison control center or doctor for treatment advice. |
| Have the product container or label with you when calling a poison control center or doctor, or going for treatment. FOR EMERGENCY MEDICAL ASSISTANCE, CALL THE ROCKY MOUNTAIN POISON CENTER at 1-866-673-6671. | |
| NOTE TO PHYSICIAN Acephate is a cholinesterase inhibitor. If signs of cholinesterase inhibition appear, atropine is antidotal. 2-PAM may also be used in conjunction with atropine but should not be used alone. | |

**FOR CHEMICAL EMERGENCY: Spill, leak, fire, exposure, or accident, call
CHEMTREC at 1-800-424-9300**

EPA Reg. No. 70506-242

EPA Est. No. _____

Net Contents: _____ Pounds

Batch/Lot No. _____

ACCEPTED**MAR - 7 2014**

**Under the Federal Insecticide, Fungicide,
and Rodenticide Act, as amended, for the
pesticide registered under:**

United Phosphorus, Inc.
630 Freedom Business Center, Suite 402
King of Prussia, PA 19406
1-800-438-6071

EPA. Reg. No: 70506-242

**SUBLABEL FOR AGRICULTURAL, HORTICULTURAL, SPECIALTY AND
NON-CROP USES**

.

.

.

GROUP 1 & 4A INSECTICIDES

LANCER GOLD[®] Insecticide

A dry flowable mixture of two systemic insecticides for use in the production and maintenance of agricultural and horticultural crops on farms or in the landscape.

ACTIVE INGREDIENTS:

Acephate: (O,S-Dimethyl acetylphosphoramidothioate).....50.0%

Imidacloprid – 1-[(6-Chloro-3-pyridinyl)methyl]-N-nitro-2-imidazolidinimine 1.8%

OTHER INGREDIENTS.....48.2%

TOTAL 100%

Contains 0.5 lb. acephate and 0.018 lb. imidacloprid per pound of product.

KEEP OUT OF REACH OF CHILDREN

CAUTION

Si usted no entiende la etiqueta, busque a alguien para que se la explique a usted en detalle.
(If you do not understand the label, find someone to explain it to you in detail.)

| FIRST AID | |
|----------------------------------------------------------------------------------------------------------------------------------------------------------------------------------------------------------------------------|-------------------------------------------------------------------------------------------------------------------------------------------------------------------------------------------------------------------------------------------------------------------------------------------------------------------------------------------|
| If swallowed | <ul style="list-style-type: none"> • Call poison control center or doctor immediately for treatment advice. Have person sip a glass of water if able to swallow. • Do not induce vomiting unless told to by a poison control center or doctor. • Do not give anything by mouth to an unconscious person. |
| If on skin or clothing | <ul style="list-style-type: none"> • Take off contaminated clothing. • Rinse skin immediately with plenty of water for 15-20 minutes. • Call a poison control center or doctor for treatment advice. |
| If in eyes | <ul style="list-style-type: none"> • Hold eye open and rinse slowly and gently with water for 15-20 minutes. • Remove contact lenses, if present, after the first 5 minutes, then continue rinsing eye. • Call a poison control center or doctor for treatment advice. |
| Have the product container or label with you when calling a poison control center or doctor, or going for treatment. FOR EMERGENCY MEDICAL ASSISTANCE, CALL THE ROCKY MOUNTAIN POISON CENTER at 1-866-673-6671. | |
| NOTE TO PHYSICIAN Acephate is a cholinesterase inhibitor. If signs of cholinesterase inhibition appear, atropine is antidotal. 2-PAM may also be used in conjunction with atropine but should not be used alone. | |

**FOR CHEMICAL EMERGENCY: Spill, leak, fire, exposure, or accident, call
CHEMTREC at 1-800-424-9300**

EPA Reg. No. 70506-242

EPA Est. No. _____

Net Contents: _____ Pounds

Batch/Lot No. _____

United Phosphorus, Inc.
630 Freedom Business Center, Suite 402
King of Prussia, PA 19406
1-800-438-6071

**PRECAUTIONARY STATEMENTS
HAZARDS TO HUMANS AND DOMESTIC ANIMALS
CAUTION**

Harmful if swallowed. Harmful if absorbed through skin. Avoid contact with skin, eyes, or clothing.

Personal Protective Equipment (PPE)

Applicators, mixers, loaders, and other handlers must wear:

- Long-sleeved shirt and long pants
- Chemical-resistant gloves made of any waterproof material for all mixers and loaders and for applicators using hand-held application equipment.
- Shoes plus socks.

In addition, all mixers and loaders and all applicators using low pressure hand wand application equipment must wear:

- A NIOSH-approved dust mist filtering respirator with MSHA/NIOSH approval number prefix TC21C or a NIOSH-approved respirator with any N, R, P, or HE filter.

See engineering controls for additional requirements.

Follow manufacturer's instructions for cleaning/maintaining personal protective equipment (PPE). If no such instructions for washables exist, use detergent and hot water. Keep and wash PPE separately from other laundry.

Engineering Controls Statements

Pilots must use an enclosed cockpit in a manner that meets the requirements listed in the Worker Protection Standard (WPS) for agricultural pesticides [40 CFR 170.240(d)(6)].

The use of human flaggers is prohibited.

When handlers use closed systems, enclosed cabs, or aircraft in a manner that meets the requirements listed in the Worker Protection Standard for agricultural pesticides [40 CFR 170.240(d)(4-6)], the handler PPE requirements may be reduced or modified as specified in the WPS.

USER SAFETY RECOMMENDATIONS

Users should:

- Wash thoroughly with soap and water after handling and before eating, drinking, chewing gum, using tobacco or using the toilet.
- Remove clothing/PPE immediately if pesticide gets inside. Then wash thoroughly and put on clean clothing.
- Remove PPE immediately after handling this product. Wash the outside of gloves before removing. As soon as possible, wash thoroughly and change into clean clothing.

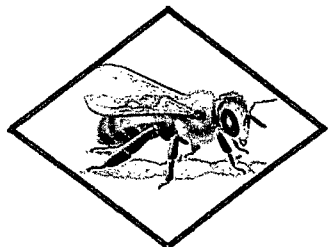
ENVIRONMENTAL HAZARDS

This pesticide is toxic to birds and wildlife, and highly toxic to aquatic invertebrates.

Do not apply directly to water, areas where surface water is present or to intertidal areas below the mean high water mark. Do not contaminate water when disposing of equipment washwaters.

This product is highly toxic to bees exposed to direct treatment or residues on blooming crops, plants or weeds. Do not apply this product or allow it to drift to blooming crops, plants or weeds if bees are foraging the treatment area.

PROTECTION OF POLLINATORS



APPLICATION RESTRICTIONS EXIST FOR THIS PRODUCT BECAUSE OF RISK TO BEES AND OTHER INSECT POLLINATORS. FOLLOW APPLICATION RESTRICTIONS FOUND IN THE DIRECTIONS FOR USE TO PROTECT POLLINATORS.



Look for the bee hazard icon in the Directions for Use for each application site for specific use restrictions and instructions to protect bees and other insect pollinators.

This product can kill bees and other insect pollinators.

Bees and other insect pollinators will forage on plants when they flower, shed pollen, or produce nectar. Bees and other insect pollinators can be exposed to this pesticide from:

- Direct contact during foliar applications, or contact with residues on plant surfaces after foliar applications
- Ingestion of residues in nectar and pollen when the pesticide is applied as a seed treatment, soil, tree injection, as well as foliar applications.

When Using This Product Take Steps To:

- Minimize exposure of this product to bees and other insect pollinators when they are foraging on pollinator attractive plants around the application site.
- Minimize drift of this product on to beehives or to off-site pollinator attractive habitat. Drift of this product onto beehives or off-site to pollinator attractive habitat can result in bee kills.

Information on protecting bees and other insect pollinators may be found at the Pesticide Environmental Stewardship website at: <http://pesticidestewardship.org/PollinatorProtection/Pages/default.aspx>. Pesticide incidents (for example, bee kills) should immediately be reported to the state/tribal lead agency. For contact information for your state, go to: www.aapco.org/officials.html. Pesticide incidents should also be reported to the National Pesticide Information Center at: www.npic.orst.edu or directly to EPA at: beekill@epa.gov.

This chemical demonstrates the properties and characteristics associated with chemicals detected in ground water. The use of this chemical in areas where soils are permeable, particularly where the water table is shallow, may result in groundwater contamination.

OBSERVE THE FOLLOWING PRECAUTIONS WHEN MIXING AND APPLYING IN THE VICINITY OF AQUATIC AREAS SUCH AS LAKES; RESERVOIRS; RIVERS; PERMANENT STREAMS, MARSHES OR NATURAL PONDS; ESTUARIES AND COMMERCIAL FISH FARM PONDS.

Spray Drift Management

The interaction of many equipment and weather related factors determine the potential for spray drift. The applicator is responsible for considering all these factors when making application decisions. Avoiding spray drift is the responsibility of the applicator.

Mixing and Loading Requirements - To avoid potential contamination of groundwater, the use of a properly designed and maintained containment pad for mixing and loading of any pesticide into application equipment is recommended. If containment pad is not used, maintain a minimum distance of 25 feet between mixing and loading area and potential surface to groundwater conduits such as field sumps, uncased well heads, sinkholes, or field drains.

For Aerial Applications - The spray boom should be mounted on the aircraft so as to minimize drift caused by wing tip vortices. The minimum practical boom length should be used, and must not exceed 75% of the wing span or rotor diameter.

Importance of Droplet Size - An important factor influencing drift is droplet size. Small droplets (<150 – 200 microns) drift to a greater extent than large droplets. Within typical equipment specifications, applications should be made to deliver the largest droplet spectrum that provides sufficient control and coverage. Formation of very small droplets may be minimized by appropriate nozzle selection, by orienting nozzles away from the air stream as much as possible and by avoiding excessive spray boom pressure.

For aerial applications, spray should be released at the lowest possible height consistent with good pest control and flight safety. Applications more than 10 feet above the crop canopy must be avoided. For ground applications, do not apply at heights greater than 4 feet above the crop canopy.

Wind Speed Restrictions - Drift potential increases at wind speeds of less than 3 mph (due to inversion potential) or more than 10 mph. However, many factors, including droplet size, canopy and equipment specifications determine drift potential at any given wind speed. Do not apply when winds are greater than 10 mph and avoid gusty and windless conditions. Risk of exposure to sensitive aquatic areas can be reduced by avoiding applications when wind direction is toward the aquatic area.

Restrictions During Temperature Inversions - Do not make ground applications during temperature inversions. Drift potential is high during temperature inversions. Temperature inversions restrict vertical air mixing, which causes small suspended droplets to remain close to the ground and move laterally in a concentrated cloud. Temperature inversions are characterized by increasing temperatures with altitude and are common on nights with limited cloud cover and light to no wind. They begin to form as the sun sets and often continue into the morning. Their presence can be indicated by ground fog; however, if fog is not present, inversions can also be identified by the movement of smoke from a ground source. Smoke that layers and moves laterally in a concentrated cloud (under low wind conditions) indicates an inversion, while smoke that moves upward and rapidly dissipates indicates good vertical mixing.

Airblast (Air Assist) Specific Instructions for Tree Crops and Vineyards

Airblast sprayers carry droplets into the canopy of trees/vines via a radially or laterally directed air stream. The following specific drift management practices should be followed:

- Adjust deflectors and aiming devices so that spray is only directed into the canopy;
- Block upward pointed nozzles when there is no overhanging canopy;
- Use only enough air volume to penetrate the canopy and provide good coverage;
- Do not allow the spray to go beyond the edge of the cultivated area (i.e. turn off sprayer when turning at end rows);

- Only spray inward, toward the orchard or vineyard, for applications to the outside rows.

No-Spray Zone Requirements for Foliar Applications

Do not apply by ground within 25 feet, or by air within 150 feet of lakes; reservoirs; rivers; permanent streams, marshes or natural ponds; estuaries and commercial fish farm ponds.

Run-Off Management

Do not cultivate within 10 feet of the aquatic areas to allow growth of a vegetative filter strip. When used on erodible soils, Best Management Practices for minimizing runoff should be employed. Consult your local National Resources Conservation Service for recommendations in your use area.

Endangered Species Notice

Under the Endangered Species Act, it is a Federal Offense to use any pesticide in a manner that results in the death of a member of an endangered species. Consult your local county bulletin, County Extension Agent, or Pesticide State Lead Agency for information concerning endangered species in your area.

Resistance Management

LANCER GOLD® Insecticide is a mixture of Group 1 (acephate) and Group 4A (imidacloprid) insecticides. Insects can develop resistance to products with the same mode of action when used repeatedly. Because resistance development cannot be predicted, use of this product should conform to resistance management strategies established for the crop and use area. Consult your local or State agricultural authorities for resistance management strategies that are complementary to those in this label. Resistance management strategies may include rotating and/or tank mixing with products having different modes of action or limiting the total number of applications per season.

Contact your local extension specialist, certified crop advisor and/or product manufacturer for additional insect resistance management recommendations. Also, for more information on Insect Resistance Management (IRM), visit the Insecticide Resistance Action Committee (IRAC) on the web at <http://irac-online.org>.

DIRECTIONS FOR USE

It is a violation of Federal Law to use this product in a manner inconsistent with its labeling.

See individual crops or use sites for specific pollinator application restrictions. If none exist under the specific crop or use site, for outdoor foliar applications, follow these application directions for crops that are contracted to have pollinator services, or food/feed crops and commercially grown ornamentals that are attractive to pollinators, or non agricultural use sites.



FOR CROPS UNDER CONTRACTED POLLINATION SERVICES

Do not apply this product while bees are foraging. Do not apply this product until flowering is complete and all petals have fallen unless the following condition has been met:

If an application must be made when managed bees are at the treatment site, the beekeeper providing the pollination services must be notified no less than 48-hours prior to the time of the planned application so that bees can be removed, covered or otherwise protected prior to spraying.



FOR FOOD/FEED CROPS AND COMMERCIALY GROWN ORNAMENTALS NOT UNDER CONTRACT FOR POLLINATION SERVICES BUT ARE ATTRACTIVE TO POLLINATORS

Do not apply this product while bees are foraging. Do not apply this product until flowering is complete and all petals have fallen unless one of the following conditions is met:

- The application is made to the target site after sunset
- The application is made to the target site when temperatures are below 55°F
- The application is made in accordance with a government-initiated public health response
- The application is made in accordance with an active state-administered apiary registry program where beekeepers are notified no less than 48-hours prior to the time of planned application so that the bees can be removed, covered or otherwise protected prior to spraying.
- The application is made due to an imminent threat of significant crop loss, and a documented determination consistent with an IPM plan or predetermined economic threshold is met. Every effort should be made to notify beekeepers no less than 48-hours prior to the time of the planned application so that the bees can be removed, covered or otherwise protected prior to spraying



NON-AGRICULTURAL USE SITES

Do not apply LANCER GOLD Insecticide while bees are foraging. Do not apply LANCER GOLD Insecticide to plants that are flowering. Only apply after all flower petals have fallen off.

READ ENTIRE LABEL. USE STRICTLY IN ACCORDANCE WITH PRECAUTIONARY STATEMENTS AND DIRECTIONS AND WITH APPLICABLE STATE AND FEDERAL REGULATIONS.

Do not apply this product in a way that will contact workers or other persons, either directly or through drift. Only protected handlers may be in the area during application. For any requirements specific to your State or Tribe, consult the agency responsible for pesticide regulation.

AGRICULTURAL USE REQUIREMENTS

Use this product only in accordance with its labeling and with the Worker Protection Standard (WPS), 40 CFR part 170. This Standard contains requirements for the protection of agricultural workers on farms, forests, nurseries and greenhouses, and handlers of agricultural pesticides. It contains requirements for training, decontamination, notification, and emergency assistance. It also contains specific instructions and exceptions pertaining to the statements on this label about personal protective equipment (PPE) and restricted-entry interval. The requirements in this box only apply to uses of this product that are covered by the Worker Protection Standard.

Do not enter or allow worker entry into treatment areas during the restricted entry interval (REI) of 24 hours.

PPE required for early entry to treated areas that is permitted under the Worker Protection Standard and that involves contact with anything that has been treated, such as plants, soil, or water, is:

- Long-sleeved shirt and long pants;
- Chemical-resistant gloves made of any waterproof material;
- Shoes plus socks

NON-AGRICULTURAL USE REQUIREMENTS

The requirements in this box apply to uses of this product that are NOT within the scope of the Worker Protection Standard for agricultural pesticides (40 CFR Part 170). The WPS applies when this product is used to produce agricultural plants on farms, forests, or greenhouses.

Do not enter or allow others to enter treated areas until sprays have dried.

RESTRICTIONS

- Do not apply with low pressure handwand equipment except for control of fire ants as a mound treatment and when used on ornamental trees, shrubs, and floral plants grown for non-agricultural or non-commercial use.
- Not for indoor residential use.
- For use on turf, use limited to sod farms and golf courses, except when applying to mound or spot treatment for fire ant and harvester ant control.
- For greenhouse/shadehouse, use is limited to commercial greenhouses/shadehouses for use on ornamental, floral and foliage plants and the tobacco floatbed application as specified in the tobacco use directions.
- Do not apply this product through any type of irrigation system.
Do not apply more than 0.4 lb imidacloprid active ingredient, per acre, per year, regardless of formulation or method of application, unless otherwise specified on this label.
- Do not apply this product, by any application method, to linden, basswood or other *Tilia* species in the State of Oregon

SPRAY DRIFT RESTRICTIONS

Observe the following precautions to minimize drift:

A variety of factors including weather conditions (e.g. wind direction, wind speed, temperature, relative humidity), and method of application (e.g. ground, aerial, airblast) can influence pesticide drift. The applicator and grower must evaluate all factors and make appropriate adjustments when applying this product.

- All aerial, ground and air-assisted/airblast application equipment must be properly maintained and calibrated using water as carrier. Do not apply this product as an ultralow (ULV) spray or in any carrier other than water.
- Use the largest droplet size consistent with good pest control. Small droplets are more prone to spray drift and can be minimized by appropriate nozzle selection, by orienting nozzles away from the air stream as much as possible, and by avoiding excessive spray boom pressure.
- Do not apply at wind speeds greater than 10 mph at the application site.
- Make applications when wind velocity favors on-target product deposition (approximately 3 to 10 mph).
- Apply as close to target plants as practical to obtain a good spray pattern for adequate coverage.
- For aerial applications, do not apply at heights greater than 10 feet above the crop canopy (consistent with flight safety).
- For airblast applications, direct spray above foliage and turn off outward pointing nozzles at row ends and outer rows.
- For aerial applications, the spray boom should be mounted on the aircraft so as to minimize drift caused by wing tip vortices. The minimum practical boom length should be used and must not exceed 75% of wing span or rotor diameter.
- For ground applications, do not apply at heights greater than 4 feet above the crop canopy.

CROP USE INFORMATION

Apply LANCER GOLD Insecticide as a directed broadcast foliar spray or to the root zone of the plants. Thorough coverage is necessary for optimum insecticidal efficacy. Use adequate spray volumes, properly calibrated application equipment and spray adjuvants, if necessary, to obtain coverage. The active ingredients in LANCER GOLD Insecticide (acephate and imidacloprid) are water soluble and readily absorbed by plant roots and foliage to give systemic control of feeding insects. Insect pests are generally controlled more effectively through ingestion than by contact. To maintain control, repeat application of LANCER GOLD Insecticide as directed.

FAILURE TO FOLLOW THE DIRECTIONS FOR USE AND PRECAUTIONS ON THIS LABEL MAY RESULT IN POOR INSECT CONTROL, CROP INJURY, AND/OR ILLEGAL RESIDUES.

MIXING INSTRUCTIONS

To prepare the application mixture, fill the spray tank one-third to one-half full of clean water with agitation running and add the required amount of LANCER GOLD Insecticide to the spray tank. Add remaining amount of water needed for the desired application volume. Maintain sufficient agitation during both mixing and application. LANCER GOLD Insecticide may be applied in tank mixtures with other pesticides and/or fertilizer solutions. Please refer to the compatibility note below. When tank mixing mixtures of LANCER GOLD Insecticide and other products, prepare the tank mixture as recommended above and follow the suggested mixing order below. Read and follow the entire label of each product to be used in tank mixes with this product.

Mixing order

Tank mixtures of LANCER GOLD Insecticide with other pesticides and/or fertilizers can be prepared after the LANCER GOLD Insecticide and water has been agitated and thoroughly mixed. Add wettable powders or wettable granules next, flowable formulations and then emulsifiable concentrates last. Do not add an additional component until the previous has been thoroughly mixed. If a fertilizer solution is added, a fertilizer-pesticide compatibility agent may be required. Maintain constant agitation during both mixing and application to ensure uniformity of the spray mixture. Dissolution may be slowed by cold water, low levels of agitation, or water containing high concentrations of boron or sulfur.

Compatibility

Test the compatibility of the intended tank mixture before adding LANCER GOLD Insecticide to the spray mixture as follows: Add proportional amounts of each ingredient in the appropriate order to a pint or quart jar. Cap the jar and shake thoroughly for approximately 5 minutes and let stand for 5 minutes. Do not use if there is the formation of a precipitate that does not readily re-disperse.

ROTATIONAL CROPS

Treated areas may be replanted with any crop specified on this label or any crop for which tolerances exist for residues of acephate AND imidacloprid on that crop as soon as practical following the last application. For crops without established tolerances for acephate AND imidacloprid, a 12-month plant-back interval must be observed.

Restriction: Cover crops for soil building or erosion control may be planted any time, but do not graze or harvest for food or feed.

AGRICULTURAL AND HORTICULTURAL CROP USES

BEANS and LIMA BEANS (Dry and Succulent Forms) – NOT FOR USE ON SUCCULENT GREEN BEANS unless grown only for seed* (Includes string beans, snap beans, and wax beans)

Ground Application: Apply in 20 to 100 gallons of water per acre by conventional ground equipment to ensure thorough coverage.

Aerial Application: Make applications in a minimum of 2 gallons of water per acre. Use sufficient carrier volume to provide thorough, uniform coverage.

| PESTS CONTROLLED | LANCER GOLD APPLICATION RATE PER ACRE | APPLICATION INSTRUCTIONS | RESTRICTIONS |
|----------------------------------------------------------------------------------------------------------------------------------------------------------------------------------------------------------------------------------------------------------------------------------------|---------------------------------------|-----------------------------------------------------------------------------------------------------------------------------|----------------------------------------------------------------------------------------------------------------------------------------------------------------------------------------------------------------------------------------------------------------------------------------------------------------------------------------------------------------------------------------------------------------------------------------------------|
| Fleahoppers, Grasshoppers | 0.5 – 1 lb. (8 – 16 oz.) | Apply when eggs or insects first appear. Use higher rates within the specified range for severe insect infestations. | The minimum interval between applications is 7 days. |
| Aphids (excluding Black Bean Aphid), Bean Leaf Beetle, Bean Leafroller, Cabbage Looper, Cutworms, Green Cloverworm, Leafhoppers, Mexican Bean Beetle, Plantbug (Lygus), Soybean Looper, Thrips, Whiteflies (except Sweetpotato & Silverleaf Whitefly) | 1 – 2 lbs. (16 – 32 oz.) | | Snap Beans –Dry: the Pre-harvest interval (PHI) is 14 days. Lima Beans – succulent form: the Pre-harvest interval (PHI) is 7 days. Do not feed treated vines to livestock. Do not apply more than 4 lbs. Lancer Gold/A per year. Do not exceed a total application of 2 lbs. acephate a.i. and 0.13 lb. imidacloprid a.i. per acre per year from all applications of all products containing these active ingredients. |
| Armyworms (excluding Beet Armyworm), Corn Earworm, European Corn Borer | 1.5 – 2 lbs. (24 – 32 oz.) | | Use on succulent green beans as a food crop is prohibited (includes string bean, snap beans and wax beans). Succulent green bean use is permitted ONLY if grown for seed. * |

***RESTRICTIONS FOR SUCCULENT GREEN BEANS GROWN FOR SEED**

- Do not feed crop residues to livestock or allow animals to graze treated areas
- Do not apply to succulent green beans grown for fresh market or processing
- No portion of the succulent bean plant may be used or distributed for food or feed purposes
- Seeds grown from succulent beans shall bear a tag or container label which forbids use of the seed for human consumption or animal feed
- Seeds grown from succulent beans may not be distributed for human consumption or animal feed.

BRUSSELS SPROUTS and CAULIFLOWER

Ground Application: Apply in 25 to 150 gallons of water per acre by conventional ground equipment to ensure thorough coverage.

Aerial Application: Make applications in a minimum of 5 gallons of water per acre. Use sufficient carrier volume to provide thorough, uniform coverage.

| PESTS CONTROLLED | LANCER GOLD APPLICATION RATE PER ACRE | APPLICATION INSTRUCTIONS | RESTRICTIONS |
|-----------------------------------------------------------------------------------------------------------------------|---------------------------------------|----------------------------------------------------------------------------------------------------------------------------------------------------------------------------------------------------------------|-----------------------------------------------------------------------------------------------------------------------------------------------------------------------------------------------------------------------------------------------------------------------------------------------------------------------------------------------------------------------------------------------------------------------------------------------------------|
| Aphids | 1 – 2 lbs. (16 – 32 oz.) | Apply when eggs or insects first appear. | <p>The minimum interval between applications is 7 days.</p> <p>Pre-harvest interval (PHI) is 14 days.</p> <p>Do not feed trimmings to livestock or allow animals to graze in treated areas.</p> <p>Do not apply more than 4 lbs. Lancer Gold/A per year.</p> <p>Do not exceed a total application of 2 lbs. acephate a.i. and 0.24 lb. imidacloprid a.i. per acre per year from all applications of all products containing these active ingredients.</p> |
| Cabbage Looper, Flea Beetle, Imported Cabbageworm, Leafhoppers, Whiteflies (except Sweetpotato & Silverleaf Whitefly) | 2 lbs. (32 oz.) | Use higher rates within the specified range when heavy infestations of aphids are present. | |
| Diamondback Moth Larvae | 2 lbs. (32 oz.) | This insect has demonstrated an ability to develop resistance to various classes of insecticides. Consult your local Agricultural Extension Service for current recommended control practices for this insect. | |

USE DIRECTIONS FOR COTTON**Restrictions Applicable to all uses on Cotton:**

Do not feed gin trash or forage to livestock.

Do not allow animals to graze on treated areas.

Do not apply more than 8 lbs. Lancer Gold/A per year.

Do not apply more than 4 lbs. acephate a.i. and 0.31 lb. imidacloprid a.i. per acre per year from all applications of all products containing these active ingredients. This includes the use of Lancer Gold in commercial seed-treatment, in-furrow, and foliar applications.

Do not apply Lancer Gold by air at more than 2 lbs. product/A in California and Arizona and not more than 1.5 lbs. product/A for all other areas of the US.

Resistance Management

Cotton pest control programs, especially those for control of Silverleaf/Sweetpotato Whitefly populations, should employ a properly designed resistance-management strategy. Such resistance-management strategies include mixture or rotation of alternative classes of chemistry including organophosphates, carbamates, pyrethroids or insect growth regulators. Consult your state or area agricultural extension service for local resistance management strategies and advice on alternative insecticides.

IN-FURROW APPLICATION

| PESTS CONTROLLED | LANCER GOLD APPLICATION RATE PER ACRE | APPLICATION INSTRUCTIONS |
|-------------------------------------------------------------------------------------------------------------------------|-----------------------------------------------------------------------------|-----------------------------------------------------------------------------------------------------------------------------------------------------------------------------------------------------------------------------------------------------------------------------------------------------------------------------------------------------------------------------------------------------------------------------------------------------------------------------------------------------------------|
| Aphids (excluding Cotton Aphids in Arizona and California), Black (Greasy) Cutworm (excluding California), Thrips | 1 - 2 lbs. (16 - 32 oz.) For the Blacklands of Texas use 2 lbs./A | Apply in water at 3 to 5 gallons per acre as an in-furrow spray. Use flat-fan nozzles for in-furrow application. Align nozzles to ensure good spray deposition into seed furrow. Cone type nozzles are not recommended as unacceptable spray deposition may occur. Use higher rates within the specified range for severe insect infestations. Lancer Gold can be mixed with fungicides that are sprayed in-furrow for disease control. See Restrictions Applicable to all uses on Cotton. |

USE DIRECTIONS FOR COTTON - continued**FOLIAR APPLICATION**

Ground Application: Apply in 10 to 25 gallons of water per acre by conventional ground equipment to ensure thorough coverage.

Aerial Application: Make applications in 3 to 10 gallons of water per acre (minimum of 5 gallons per acre in Arizona and California). Use sufficient carrier volume to provide thorough, uniform coverage. Do not apply Lancer Gold by air at more than 2 lbs. product/A in California and Arizona and not more than 1.5 lbs. product/A for all other areas of the United States.

| PESTS CONTROLLED | LANCER GOLD APPLICATION RATE PER ACRE | APPLICATION INSTRUCTIONS | RESTRICTIONS |
|--------------------|-------------------------------------------------------------------------------------------|----------------------------------------------------------------------------------------------------------------------------------------------------------------------------------------------------------------------------------------------------------------------------------------------------------------------|----------------------------------------------------------------------------------------------------|
| Thrips | 0.32 - 0.38 lb. (5 - 6 oz.) | Apply when eggs or insects first appear. Use higher rates within the specified range for severe insect infestations. | The minimum interval between applications is 7 days. Pre-harvest interval (PHI) is 21 days. |
| Fleahoppers | 0.5 lb. (8 oz.) | Apply when eggs or insects first appear. | See Restrictions Applicable to all uses on Cotton. |
| Plant bugs (Lygus) | 0.5 - 2 lbs. (8 - 32 oz.) Arizona & California 1.5 - 2 lbs. (24 - 32 oz.) | Apply when eggs or insects first appear. Use highest rate for Lygus adults that have migrated into cotton. Use higher rates within the specified range for severe insect infestations. | |
| Stinkbugs | 1.5 lbs. (24 oz.) | Apply when eggs appear. | |
| Cutworms | 1.5 lbs. (24 oz.) | Apply when insects first appear or damage is first noted. Ground application is recommended. Aerial applications are less effective but may be used. Control is most effective when ground application is made in the evenings and sprays are directed toward the base and lower portion of the plant. | |

USE DIRECTIONS FOR COTTON - continued**FOLIAR APPLICATION - continued**

| PESTS CONTROLLED | LANCER GOLD APPLICATION RATE PER ACRE | APPLICATION INSTRUCTIONS | RESTRICTIONS |
|---------------------------------------------------------------------------------------------------------------------------------------------------|---------------------------------------------------------------------------------------------------|-----------------------------------------------------------------------------------------------------------------------------------------------------------------------------------------------------------------------------------------------------------------------------------------------------------------------------------------------------------------------------------------------------------------------------------------------|-----------------------------------------------------------------------------------------------------------------------------------------------------------------|
| Cotton Aphid (excluding Arizona & California) | 1 - 2 lbs. (16 - 32 oz.) | This insect may develop resistance to various classes of insecticides. Consult your local Agricultural Extension Service for current control recommendations. Use higher rates within the specified range for severe insect infestations. | The minimum interval between applications is 7 days. Pre-harvest interval (PHI) is 21 days. See Restrictions Applicable to all uses on Cotton. |
| Whitefly (excluding Sweetpotato & Silverleaf Whitefly) | 1 - 2 lbs. (16 - 32 oz.) | Use higher rates within the specified range for severe insect infestations. | |
| Bollworms, Cotton Leaf Perforator, Tobacco Budworm Adults Larvae Eggs (DEADHATCH®), | East of Rockies: 1 - 2 lbs. (16 - 32 oz.) Arizona & California: 1 lb. (16 oz.) | Early Season: Use 1 lb. product/A for light infestation. Mid and Late Season: Use 1.5 to 2 lbs. product/A for moderate to severe infestations. Apply when eggs appear. Moths of budworm larvae are controlled by direct contact with spray. Moth kill is most likely to occur when late evening applications are made. DEADHATCH®: Control of emerging larvae by consumption of treated egg casings. | |
| Armyworms (excluding Beet Armyworm), Cabbage Looper, Grasshoppers, Salt Marsh Caterpillar, Pink Bollworm (Arizona & California) | 2 lbs. (32 oz.) | Apply when eggs or insects appear. | |

USE DIRECTIONS FOR COTTON TANK MIXES FOR FOLIAR APPLICATION

Ground Application: Apply in 10 to 25 gallons of water per acre by conventional ground equipment to ensure thorough coverage.

Aerial Application: Make applications in 3 to 10 gallons of water per acre (minimum of 5 gallons per acre in Arizona and California). Use sufficient carrier volume to provide thorough, uniform coverage. Do not apply Lancer Gold by air at more than 2 lbs. product/A in California and Arizona and not more than 1.5 lbs. product/A for all other areas of the United States.

Always read and follow all label directions when using any pesticide alone or in tank mix combinations. Follow all restrictions and precautions, which appear on all product labels. The most restrictive labeling applies when using a tank mix.

| PESTS CONTROLLED | AMOUNT OF LANCER GOLD + TANK MIX PARTNER PER ACRE | APPLICATION INSTRUCTIONS | RESTRICTIONS |
|---------------------------------------------------------------------------------------------------------------------------------------------------------------------------------------------------------------------------------------------------------------------------------------------|-------------------------------------------------------------------|-------------------------------------------------------------------------------------------------------------------------------------------------------------------------------------------------------------------------------------------------------------------------------------------------------------------------------------------------------------------------------------------------|---------------------------------------------------------------------------------------------------------------------------------------------------------------|
| Sweetpotato & Silverleaf Whitefly | 1 lb. (16 oz.) + DANITOL® 2.4 EC 8 to 16 fl. oz. | Apply when insects first appear or when damage is first noted and repeat applications at 7-day intervals as necessary to maintain control* Use a minimum application rate of 10.66 fl. oz./acre DANITOL® (0.2 lb. a.i./acre) in CA and AZ. Always read and follow all applicable directions, restrictions, and precautions on the EPA registered label for DANITOL® 2.4 EC Spray. | The minimum interval between applications is 7 days. Pre-harvest interval (PHI) is 21 days. *See restrictions applicable to all uses on cotton. |
| Armyworms (excluding Beet Armyworm), Bollworm, Cabbage Looper, Cotton Aphid, Fleahoppers, Grasshoppers, Pink Bollworm, Plant bugs (Lygus, Mirids), Salt Marsh Caterpillar, Thrips, Tobacco Budworm, Whitefly (Excluding Sweetpotato & Silverleaf Whitefly) | 0.5 to 2 lbs. (8 to 32 oz.) + LORSBAN® 4E 1 to 2 pts. | Always read and follow all applicable directions, restrictions, and precautions on the EPA registered label for LORSBAN® 4E. Apply when insects first appear or when damage is first noted and repeat applications at 7-day intervals as necessary to maintain control*. Use higher rates within the specified range for severe insect infestations. | |

| PESTS CONTROLLED | AMOUNT OF LANCER GOLD + TANK MIX PARTNER PER ACRE | APPLICATION INSTRUCTIONS | RESTRICTIONS |
|------------------|---------------------------------------------------------|-----------------------------------------------------------------------------------------------------------------------------------------------------------------------------------------------------------------------------------------------------------------------------------------------------------------------------------------------------------------------------------------------------------------|---------------------------------------------------------------------------------------------------------------------------------------------------------------|
| Cutworms | 1.5 lbs. (24 oz.) + LORSBAN® 4E 1 to 2 pts. | Apply when insects first appear or when damage is first noted and repeat application at 7-day intervals as necessary to maintain control*. Control is most effective when ground application is made in the evenings and sprays are directed toward the base and lower portion of plant. Directed, ground application is most effective. Aerial applications are less effective, but may be used. | The minimum interval between applications is 7 days. Pre-harvest interval (PHI) is 21 days. *See Restrictions applicable to all uses on cotton. |

USE DIRECTIONS FOR COTTON TANK MIXES WITH PYRETHROIDS FOR FOLIAR APPLICATION

Ground Application: Apply in 10 to 25 gallons of water per acre by conventional ground equipment to ensure thorough coverage.

Aerial Application: Make applications in 3 to 10 gallons of water per acre (minimum of 5 gallons per acre in Arizona and California). Use sufficient carrier volume to provide thorough, uniform coverage. Do not apply Lancer Gold by air at more than 2 lbs. product/A in California and Arizona and not more than 1.5 lbs. product/A for all other areas of the United States.

Always read and follow all label directions when using any pesticide alone or in tank mix combinations. Follow all restrictions and precautions, which appear on all product labels. The most restrictive labeling applies when using a tank mix. Synthetic Pyrethroids should be used within the guidelines of state and/or regional resistance management programs and recommendations.

| PESTS CONTROLLED | AMOUNT OF ACEPHATE 97UP + TANK-MIX-PARTNER | APPLICATION INSTRUCTIONS | RESTRICTIONS |
|---------------------------------------------------------------------------------------------------------------------------------------------------------------------------------------------------------------------------------------------|--------------------------------------------------------------------------------------------------------------------------------------------------------------------------------------------------------------------------------------------------------------------------------------------------------------------------------------|----------------------------------------------------------------------------------------------------------------------------------------------------------------------------------------------------------------------------------------------------------------------------------------------------------------------------------------------------------------------------------|------------------------------------------------------------------------------------------------------------------------------------------------------------------------------|
| Aphids, Bollworm, Cabbage Looper, Cotton Leaf Perforator, Fall Armyworm, Fleahoppers, Pink Bollworm (AZ & CA), Plant bugs, Sweetpotato & Silverleaf Whitefly, Thrips, Tobacco Budworm, Whiteflies | 1 to 2 lbs./A (16 to 32 oz.) + UP-Cyde® 2.5 EC (Follow label directions) or ASANA® XL (Follow label directions) or BAYTHROID® 2 EC (Follow label directions) or BIFENTURE® EC (Follow label directions) or LAMBDA-CY EC Insecticide-RUP™ (Follow label directions) | Begin applications when eggs or insects first appear. Repeat application at 7-day intervals as necessary to maintain control*. Use higher rates within the specified range for severe insect infestations. | The minimum interval between applications is 7 days. Pre-harvest interval (PHI) is 21 days. *See Restrictions applicable to all uses on cotton. |
| Cutworms | 1.5 lbs./A (24 oz.) + Any Synthetic Pyrethroid listed above | Control is most effective when ground applications are made in the evenings and sprays are directed toward the base and lower portion of plant. Repeat applications at 7-day spray intervals as necessary to maintain control.* Directed, ground applications are most effective. Aerial applications are less effective, but may be used. | |
| Stink bugs | 1.5 lbs/A (24 oz) + Any Synthetic Pyrethroid listed above | Apply when eggs or insects first appear. Repeat application at 7- day spray intervals necessary to maintain control*. | |

HEAD LETTUCE – Crisphead Type Only


Ground Application: Apply in 10 to 60 gallons of water per acre by conventional ground equipment to ensure thorough coverage.

Aerial Application: Make applications in a minimum of 5 gallons of water per acre. Use sufficient carrier volume to provide thorough, uniform coverage.

| PESTS CONTROLLED | LANCER GOLD APPLICATION RATE PER ACRE | APPLICATION INSTRUCTIONS | RESTRICTIONS |
|-------------------------------------------------------|---------------------------------------|-----------------------------------------------------------------------------|-----------------------------------------------------------------------------------------------------------------------------------------------------------------------------------------------------------------------------------------------------------------------------------------------------------------------------------------------------------------------------------------------------------------------------------------------------------------------------------------------------------------------------------------------------------------|
| Aster Leafhopper, Aphids | 1 – 2 lbs. (16 – 32 oz.) | Use higher rates within the specified range for severe insect infestations. | The minimum interval between applications is 7 days. Pre-harvest interval (PHI) is 21 days. Do not feed treated trimmings to livestock. |
| Armyworm (excluding Beet Armyworm), Cabbage Looper | 2 lbs. (32 oz.) | | Do not apply more than 4 lbs. Lancer Gold/A per year. Do not exceed a total of 2 lbs. acephate a.i. and 0.24 lb. imidacloprid a.i. per acre per year from all applications of all products containing these active ingredients. For use on spring, summer, and early fall crops in all areas; late fall crops in Arizona; and winter crops in Arizona, California, Florida and Texas. Do not apply after first head begins to form in crops which germinate from mid-September through November in desert areas of Arizona and California. |

NON-BEARING CITRUS – Directions for Use in Agricultural Settings (Newly Planted Groves)**Foliar Applications**

Ground Application: Apply in 100 to 200 gallons of water per acre by conventional ground equipment to ensure thorough coverage.

| PESTS CONTROLLED | LANCER GOLD APPLICATION RATE PER ACRE | APPLICATION INSTRUCTIONS | RESTRICTIONS |
|-----------------------------------------------------------------------------------------------------------------------------------------------------------------|---------------------------------------|---------------------------------------------------------------------------------------------------------------------------------------------------------------------------------------------------------------------------------------------------------------------------------------------------------------|---------------------------------------------------------------------------------------------------------------------------------------------------------------------------------------------------------------------------------------------------------------------------------------------|
| Aphids, Grasshoppers, Katydid, Mealybug, Orangedog, Plant bug (Lygus), Thrips, Whiteflies (except Sweetpotato & Silverleaf Whitefly) | 1 lb. (16 oz.) | Apply at 3-day intervals as necessary to maintain control. Spray individual juvenile or non-bearing trees for coverage with total application not to exceed specified rate in lbs. per acre. Length of residual activity will depend upon spray coverage and amount of moisture following application. | Do not harvest citrus for one year (365 days) after treatment. Do not graze treated areas.  Do not apply during bloom or within 10 days prior to bloom or when bees are actively foraging. |
| Citrus Blackfly * | 1 – 1.5 lbs. (16 – 24 oz.) | Apply when eggs or insects first appear. Apply at 3-day intervals, as necessary to maintain control, for the 1 lb. product/A rate and at 7-day intervals for rates greater than 1 lb. product/A. Use higher rates within the specified range for severe insect infestations. | Do not exceed a total of 0.4 lb imidacloprid a.i. per acre per year from all applications of all products containing this active ingredient. * Not registered in California for control of Citrus Blackfly. |
| Ants (excluding (Harvester, Carpenter, Pharaoh, and Fire ants) | 1.5 lbs. (24 oz.) | Repeat at 7-day spray intervals as necessary to maintain control. | |

NON-BEARING CITRUS – Directions for Use in Agricultural Settings (Newly Planted Groves)**Soil Mound Drenches**

| PESTS CONTROLLED | LANCER GOLD APPLICATION RATE | APPLICATION INSTRUCTIONS | RESTRICTIONS |
|--------------------------------|------------------------------------|----------------------------------------------------------------------------------------------------------------------------------------------------------------------------------------------------------------------------------------------------------------------------------------------------------------------------------------------------------------------------------|---------------------------------------------------------------------------------------------------------------------------------------------------------------------------------------------------------------------------------------------------------------------------------------------------------------------------------------------------------------------------------------|
| Fire Ants, Harvester Ants * | 1.5 oz. in 5 gallons of water | <p>Apply 1 gallon of mix to each mound area by sprinkling the mound until it is wet and treat a four (4) foot diameter circle around the mound.</p> <p>For best results, apply in early morning or late afternoon when ants are most active. Applications made during prolonged hot, dry conditions may be ineffective due to the location of the ants deep within the nest.</p> | <p>Do not harvest citrus for one year (365 days) after treatment.</p> <p>Do not graze treated areas.</p> <p>Do not treat mound more than once per season</p> <p>Do not exceed a total of 0.4 lb imidacloprid a.i. per acre per year from all applications of all products containing this active ingredient.</p> <p>* Not registered in California for control of Harvester Ants.</p> |

PEANUTS

Ground Application: Apply in 10 to 50 gallons of water per acre by conventional ground equipment to ensure thorough coverage.

Aerial Application: Make applications in 5 to 10 gallons of water per acre. Use sufficient carrier volume to provide thorough, uniform coverage.

| PESTS CONTROLLED | LANCER GOLD APPLICATION RATE PER ACRE | APPLICATION INSTRUCTIONS | RESTRICTIONS |
|------------------------------------------------------------------------------------------------------------------------------------------------------------|---------------------------------------|----------------------------------------------------------------------------------------------------------------------------------------------------------------------------------------------------------------------------------------------------------------------------------------------------------------------------------------------------------------------------------------------------------------------------------------------------------------------------------------------------------------------------------------------------------------------------------------------------------------------------------------------------------------------------------------------------------------------------------------------------------------------------------------------------------------------------------------------------------------------|-----------------------------------------------------------------------------------------------------------------------------------------------------------------------------------------------------------------------------------------------------------------------------------------------------------|
| Grasshoppers | 0.5 – 1 lb. (8 – 16 oz.) | Apply when eggs or insects first appear. | Pre-harvest interval (PHI) is 14 days. |
| Thrips | 0.75 - 1.5 lbs. (12 – 24 oz.) | Repeat application at 5-day intervals for rates up to 1 lb. product/A and at 7-day intervals for rates greater than 1 lb. product/A as necessary to maintain control. | Do not feed treated forage or hay to livestock. |
| Aphids, Corn Earworm, Fall Armyworm, Leafhoppers, Loopers, Velvetbean Caterpillar, Whiteflies (except Sweetpotato & Silverleaf) | 1.5 – 2 lbs. (24 – 32 oz.) | Use higher rates within the specified range for severe insect infestations. Lancer Gold can be tank mixed with registered at-cracking and early post-emergence peanut herbicides, provided those products do not prohibit tank mixes. The most restrictive label limitations and precautions must be followed, and label dosage rates must not be exceeded. To determine physical compatibility, pour the specified proportions of each chemical with the same proportion of water as will be present in the chemical supply tank, into a suitable container. Mix thoroughly and allow to stand for five minutes. If the combination remains mixed, or can be remixed readily, the mixture is considered physically compatible. When mixing wettable powder or dry flowable formulations, add and disperse these first, then add liquid pesticides. Do | Do not allow animals to graze on treated areas. Do not apply more than 7 lbs. Lancer Gold/A per year. Do not exceed a total application of 4 lbs. acephate a.i. and 0.13 lb. imidacloprid a.i. per acre per year from all applications of all products containing these active ingredients. |

| | | | |
|--|--|-------------------------------------------------------------------------------------------------------------------------------------------------------------------------------------------------------------------------|--|
| | | not use the mix combination if there is any separation which cannot be readily remixed. Agitate combinations and apply immediately. Do not allow combinations to set for prolonged periods in the chemical supply tank. | |
|--|--|-------------------------------------------------------------------------------------------------------------------------------------------------------------------------------------------------------------------------|--|

PEPPERS**BELL**

Ground Application: Apply in 25 to 150 gallons of water per acre by conventional ground equipment to ensure thorough coverage.

Aerial Application: Make applications in a minimum of 3 gallons of water per acre (minimum of 5 gallons per acre in California). Use sufficient carrier volume to provide thorough, uniform coverage.

| PESTS CONTROLLED | LANCER GOLD APPLICATION RATE PER ACRE | APPLICATION INSTRUCTIONS | RESTRICTIONS |
|-----------------------------------------------------------|---------------------------------------|------------------------------------------------------------------------------------------------------------------------------------------------------------------------------------------------------------------------|----------------------------------------------------------------------------------------------------------------------------------------------------------------------------------------------------------------------------------------------------|
| Grasshoppers | 0.5 – 1 lb. (8 – 16 oz.) | Apply when eggs or insects first appear. | The minimum interval between applications is 7 days. |
| Cabbage Looper, Green Peach Aphid, Tobacco Hornworm | 1 – 2 lbs. (16 – 32 oz.) | Repeat application at 5-day intervals for rates up to 1 lb. product/A and 7-day intervals for rates greater than 1 lb. product/A as necessary to maintain insect-pest populations below economically damaging numbers. | Pre-harvest interval (PHI) is 7 days. |
| European Corn Borer | 1.5 – 2 lbs. (24 – 32 oz.) | Use higher rates within the specified range for severe insect infestations. | Do not apply more than 4 lbs. Lancer Gold/A per year. Do not exceed a total application of 2 lbs. acephate a.i. and 0.24 lb. imidacloprid a.i. per acre per year from all applications of all products containing these active ingredients. |

NON-BELL – for use only in Midwestern states, Eastern states, and Puerto Rico

Ground Application: Apply in 40 to 150 gallons of water per acre by conventional ground equipment to ensure thorough coverage.

| PESTS CONTROLLED | LANCER GOLD APPLICATION RATE PER ACRE | APPLICATION INSTRUCTIONS | RESTRICTIONS |
|------------------|---------------------------------------|------------------------------------------------------|-------------------------------------------------------|
| Aphids | 1 lb. (16 oz.) | Apply when insects first appear. | Pre-harvest interval (PHI) is 7 days. |
| | | Repeat application at a 5-day interval as necessary. | Do not apply more than 2 lbs. Lancer Gold/A per year. |

| | | | |
|--|--|--|--------------------------------------------------------------------------------------------------------------------------------------------------------------------------------------|
| | | | Do not exceed a total application of 1 lb. acephate a.i. and 0.24 lb. imidacloprid a.i. per acre per year from all applications of all products containing these active ingredients. |
|--|--|--|--------------------------------------------------------------------------------------------------------------------------------------------------------------------------------------|

SOYBEANS

Ground Application: Apply in 10 to 50 gallons of water per acre by conventional ground equipment to ensure thorough coverage.

Aerial Application: Make applications in 5 to 10 gallons of water per acre. Use sufficient carrier volume to provide thorough, uniform coverage.

| PESTS CONTROLLED | LANCER GOLD APPLICATION RATE PER ACRE | APPLICATION INSTRUCTIONS | RESTRICTIONS |
|------------------------------------------------------------------------------------------------------------------------------------------------------------------------------------------|---------------------------------------|------------------------------------------------------------------------------------------------------------------------------------------------------------|----------------------------------------------------------------------------------------------------------------------------------------------------------------------------------------------------------------------------------------------------------------------------------------------------------|
| Grasshoppers, Thrips | 0.5 - 1 lb. (8 - 16 oz.) | Apply when eggs or insects first appear. | The minimum interval between applications is 7 days. |
| Potato Leafhopper, Stink bugs | 1 - 2 lbs. (16 - 32 oz.) | Repeat application as necessary to maintain insect-pest populations below economically damaging numbers. | Pre-harvest interval (PHI) is 21 days. |
| Aphids, Armyworm (excluding Beet Armyworm), Bean Leaf Beetle, Cabbage Looper, Green Cloverworm, Mexican Bean Beetle, Soybean Aphid, Threecornered Alfalfa Hopper, Velvetbean Caterpillar | 1.5 - 2 lbs. (24 - 32 oz.) | Repeat application at 7-day intervals as necessary to maintain control. Use higher rates within the specified range for severe insect infestations. | Do not graze or cut vines for hay or forage. Do not apply more than 3 lbs. Lancer Gold/A per year. Do not exceed a total application of 1.5 lbs. acephate a.i. and 0.14 lb. imidacloprid a.i. per acre per year from all applications of all products containing these active ingredients. |

TOBACCO**Tobacco Transplant Water Application (not for use in California)**

| PESTS CONTROLLED | LANCER GOLD APPLICATION RATE PER ACRE | APPLICATION INSTRUCTIONS | RESTRICTIONS |
|--------------------------------------------------------------------------------------------------------------------|------------------------------------------------------|-------------------------------------------------------------------------------------------------------------------------------------------------------------------------------------------------------------------------------------------------------------------------------------------------------------------------------------------------------------------------------------------------------------------------------------------------------------------------------------------------------------------------------------------------------|----------------------------------------------------------------------------------------------------------------------------------------------------------------------------------------------------------------------------------------------------------------------------------------------------------------------------------------------------------------------------------------------------------------------------------------------------------------------------------------------------------------------------------------------------------|
| Cutworms, Flea Beetle, Green Peach Aphid, Potato Tuberworm, Tobacco Aphid, Tobacco Thrips • • | 1.5 lbs. (24 oz.) | <p>Provides control of early season flea beetles, green peach aphids, tobacco aphids, and cutworms for approximately 3 to 4 weeks after transplanting. For later season control of these insects, apply a foliar spray of Lancer Gold.</p> <p>Apply in a minimum of 100 gallons of transplant water per acre. Lancer Gold should be pre-mixed in water to form a slurry solution prior to adding to the transplant water tank.</p> <p>Do not apply more than 1.5 lbs product/A as a transplant water application as some phytotoxicity may occur.</p> | <p>Pre-harvest interval (PHI) is 14 days.</p> <p>Do not apply more than 8 lbs. Lancer Gold/A per year.</p> <p>Do not apply more than 4 lbs. acephate a.i. and 0.4 lb. imidacloprid a.i. per acre per year for all uses on tobacco including transplant water, plant bed, soil, float bed (greenhouse), and foliar applications.</p> <p>Make transplant water applications using mechanical transplant equipment only. Using such equipment, the insecticide/water mixture is mechanically applied directly into the soil along with the transplants.</p> |

TOBACCO - continued**Tobacco Foliar Application (not for use in California)**

Ground Application: Apply in 10 to 50 gallons of water per acre by conventional ground equipment to ensure thorough coverage.

Aerial Application: Make applications in a minimum of 3 gallons of water per acre. Use sufficient carrier volume to provide thorough, uniform coverage.

| PESTS CONTROLLED | LANCER GOLD APPLICATION RATE PER ACRE | APPLICATION INSTRUCTIONS | RESTRICTIONS |
|------------------------------------------------------------------------|---------------------------------------|-----------------------------------------------------------------------------|-------------------------------------------------------------------------------------------------------------------------------------------------------------------------------------------------------------------|
| Grasshoppers | 0.5 – 1 lb. (8 – 16 oz.) | Apply at 7-day intervals as needed. | Allow at least 14 days to elapse between final application and harvest (PHI = 14 days). |
| Green Peach Aphid, Flea Beetle, Hornworm, Tobacco Thrips | 1 lb. (16 oz.) | Use higher rates within the specified range for severe insect infestations. | Do not apply more than 8 lbs. Lancer Gold/A per year. |
| Stink Bugs, Tobacco Aphid, Vegetable Weevils | 1 - 1.5 lbs. (16 – 24 oz.) | | Do not apply more than 4 lbs. acephate a.i. and 0.4 lb. imidacloprid a.i. per acre per year for all uses on tobacco including transplant water, plant bed, soil, float bed (greenhouse), and foliar applications. |
| Budworms, Cabbage Looper, Cutworm, Japanese Beetle, Aphids | 1.5 lbs. (24 oz.) | | |

Tobacco Plant Bed Application (not for use in California)

| PESTS CONTROLLED | LANCER GOLD APPLICATION RATE PER ACRE | APPLICATION INSTRUCTIONS | RESTRICTIONS |
|-----------------------------------------------------------------|---------------------------------------|------------------------------------------------------------------------------------------------------------------------------------------------------------------------------------------------|------------------------------------------------------------------------------------------------------------------------------------------------------------------------------------------------------------------------------------------------------------------------------------------------------------------------------|
| Cutworm, Flea Beetle, Green Peach Aphid, Tobacco Aphid | 1.5 lbs. (24 oz.) | Apply to foliage at the equivalent of 1½ tablespoons in 1 gallon of water per every 1,000 sq. ft. of bed. Apply evenly to ensure thorough coverage. Apply at 7-day intervals as needed. | Pre-harvest interval (PHI) is 14 days. Do not apply more than 8 lbs. Lancer Gold/A per year. Do not apply more than 4 lbs. acephate a.i. and 0.4 lb. imidacloprid a.i. per acre per year for all uses on tobacco including transplant water, plant bed, soil, float bed (greenhouse), and foliar applications. |

TOBACCO - continued**Tobacco Greenhouse (Floatbed) Application (not for use in California)**

| PESTS CONTROLLED | LANCER GOLD APPLICATION RATE PER ACRE | APPLICATION INSTRUCTIONS | RESTRICTIONS |
|-----------------------------------------------------------------|---------------------------------------|-------------------------------------------------------------------------------------------------------------------------------------------------------------|--------------------------------------------------------------------------------------------------------------------------------------------------------------------------------------------------------------------------------------------------------------------------------------------------------------------------------------------------------------------------------------------------------------------------------------------------------------------------------------------|
| Cutworm, Flea Beetle, Green Peach Aphid, Tobacco Aphid | 1.5 lbs. (24 oz.) | Apply to foliage at the equivalent of 1½ tablespoons in 3 gallons of water per every 1,000 sq. ft. of bed. Apply evenly to ensure thorough coverage. | Pre-harvest interval (PHI) is 14 days. Apply at a minimum of 7-day intervals as needed Do not apply more than 8 lbs. Lancer Gold/A per year. Do not apply more than 4 lbs. acephate a.i. and 0.4 lb. imidacloprid a.i. per acre per year for all uses on tobacco including transplant water, plant bed, soil, float bed (greenhouse), and foliar applications. Dispose of floatbed water in the transplanted field by either transplant water or foliar spray. |

Tobacco Soil Mound Drench Application (not for use in California)

| PESTS CONTROLLED | LANCER GOLD APPLICATION RATE | APPLICATION INSTRUCTIONS | RESTRICTIONS |
|----------------------------|-------------------------------|---------------------------------------------------------------------------------------------------------------------------------------------------------------------------------------------------------------------------------------------------------------------------------------------------------------------------------------------------------------------------------------------------------------------------------------------------------------------|---------------------------------------------------------------------------------------------------------------------------------------------------------------------------------------------------------------------------------------------------------------------------------------------------------------------------------------------------------------------------------------------------------------------------|
| Fire Ant, Harvester Ant | 1.5 oz. in 5 gallons of water | Apply when insects first appear. Apply 1 gallon of Lancer Gold + water mix to each mound area by sprinkling the mound until it is wet and treat a four (4) foot diameter circle around the mound. For best results, apply the material in the early morning or late afternoon when the ants are most active. Applications made under prolonged dry and hot conditions may be ineffective due to the location of the ants deep within the nest. | Pre-harvest interval (PHI) is 14 days. Do not apply more than 8 lbs. Lancer Gold/A per year. Do not apply more than 4 lbs. acephate a.i. and 0.4 lb. imidacloprid a.i. per acre per year for all uses on tobacco including transplant water, plant bed, soil, float bed (greenhouse), and foliar applications. Treat a maximum of 13 mounds per acre. Do not treat more than once per season. |

SPECIALTY USES**CROP TOLERANCE**

Lancer Gold Insecticide is generally not phytotoxic to most greenhouse or field grown plants or turf. However, it is impossible to test all plant varieties and cultural conditions. Before treating large plantings, apply to a representative group of plants and observe for two weeks to assure that a particular variety, grown under current conditions is not sensitive to Lancer Gold. Use on turfgrass is limited to sod farms and golf courses, except when applying by mound or sport treatment for fire and harvester ant control.

The following have been found sensitive to Lancer Gold Insecticide:

Trees: Balm of Gilead, Cottonwood, Lombardy Poplar or Viburnum suspensum and Crabapple varieties, Ichonoski, Malusfioribunda, Pink Perfection, Red Wine and Snow Cloud.

Plants: Bletchum gibbum, Cissus Antarctica, Ficus triangularis, Fittonia verschaffeltii, Maranta leuconeura kerchoveana, Pachystachya lutea, Plectranthus australis, Polypodium aureus, Polystichum, Pteris ensiformis, Tolmiea menziesii.

Chrysanthemum Varieties: Albatross, Bonnie Jean, Dixie, Garland, Gem, Iceberg, Pride, Showoff, Statesman, Tally Ho, Westward Ho and Wild Honey. Applications to Chrysanthemums and Roses with open flowers may results in flower damage.

SMALL VOLUME SPRAY EQUIPMENT**PREPARATION OF LANCER GOLD SPRAY MIX USING A 16 OUNCE MEASURING CUP**

| LABEL DIRECTION PER ACRE IN 100 GALLONS OF WATER | EQUIVALENT PER ACRE IN 25 GALLONS OF WATER | EQUIVALENT PER ACRE IN 1 GALLON OF WATER (TEASPOONS/GALLON) |
|-----------------------------------------------------|-----------------------------------------------|-------------------------------------------------------------------|
| 0.5 lb. | 2 oz. | 2/3 tsp. |
| 1 lb. | 4 oz. | 1 1/3 tsp. |
| 1.5 lbs. | 6 oz. | 2 tsp. |
| 2 lbs. | 8 oz. | 2 2/3 tsp. |

NON-BEARING CITRUS**Restrictions**

- Do not graze treated areas.
- DO NOT HARVEST citrus for one year (365 days) after treatment.
- For repeat applications, use a minimum spray interval of 3 days for application rates up to and including 1 lb. product/A and a minimum of 7 days for rates greater than 1 lb. product/A.
- Do not exceed a total of 0.4 lb imidacloprid a.i. per acre per year from all applications of all products containing this active ingredient.
- Do not apply while bees are foraging in the treatment area. Do not apply to plants that are flowering. Only apply after all flower petals have fallen off



| PLANTS | PESTS CONTROLLED | AMOUNT LANCER GOLD PER ACRE | TIME OF APPLICATION | FURTHER USE INSTRUCTIONS |
|---------------------------------------------------------|-------------------------------------------------------------------------------------------|----------------------------------------------------------------------------------------------------------------------------------------------------------------------------------------------------------|----------------------------------------------------------------------------------------------------------------------------------------------------------------------------------------------------------|------------------------------------------------------------------------------------------------------------------------------------------------------------------------------------------------------------------------------------------------------------------------------------------------------------|
| Non-bearing Citrus (including citrus nursery seedlings) | Aphid, Grasshopper, Katydid, Mealybugs, Orangedog, Plant Bugs (Lygus), Thrips, Whiteflies | 1 lb. (16 oz.) | Apply as needed for control of existing populations. | Apply Lancer Gold in 100 to 200 gallons of water per acre. Spray individual juvenile or non-bearing trees for coverage with total application not to exceed specified rate in lbs. per acre. Length of residual activity will depend upon spray coverage and the amount of moisture following application. |
| | Citrus Blackfly * | 1 – 1.5 lbs. (16 – 24 oz.) | Use the higher label rate when a heavy infestation of Citrus Blackfly is present. Begin applications when eggs or adults first appear. Apply on a 7 to 10 day interval or as needed to maintain control. | |
| Non-bearing Citrus (including citrus nursery seedlings) | Ants (excluding Carpenter, Fire, Harvester, and Pharaoh) | Foliar Spray 1.5 lbs. (24 oz.) | Apply as needed for control of existing populations. | Apply Lancer Gold in 100 to 200 gallons of water per acre. Spray individual juvenile or non-bearing trees for coverage with total application not to exceed specified rate in lbs. per acre. Length of residual activity will depend upon spray coverage and the amount of moisture following application. |
| | Fire Ant, Harvester Ant * | Drench Method: Mix 1.5 oz. in 5 gallons of water. Apply 1 gallon of mix to each mound area by sprinkling the mound until it is wet and treat a four (4) foot diameter circle around the mound. | For best results, apply the material in the early morning or late afternoon when the ants are most active. | Applications made under prolonged hot and dry conditions may be ineffective due to the location of the ants deep within the nest. |

* Not registered in California for control of Citrus Blackfly and Harvester Ants.

NURSERY STOCK

Non-Bearing Deciduous Fruit Trees, Nut Trees and Vines in Nursery Fields or Non-Bearing Orchards

Restrictions

- Do not allow livestock to graze treated areas.
- For application only to non-bearing trees and vines in nursery fields or in non-bearing orchards.
- Do not apply to interplants or single trees in a bearing orchard.
- Do not harvest any fruit from sprayed trees for one year (365 days) after application.
- For repeat applications, use a minimum spray interval of 3 days for application rates up to and including 1 lb. product/A and a minimum of 7 days for rates greater than 1 lb. product/A.
- Do not exceed a total of 0.4 lb imidacloprid a.i. per acre per year from all applications of all products containing this active ingredient.



- Do not apply while bees are foraging in the treatment area. Do not apply to plants that are flowering. Only apply after all flower petals have fallen off.

| PLANTS | PESTS CONTROLLED | AMOUNT LANCER GOLD PER ACRE | TIME OF APPLICATION | FURTHER USE INSTRUCTIONS |
|---------------------------------------------------------------------------------------------------------------------------------------------------------------------------------|----------------------------------------------------------------------------------------------------------------------------------------------------------------------|----------------------------------------------------------------------------------------------------------------------------------------------------------------------------------------------------------|------------------------------------------------------------------------------------------------------------|------------------------------------------------------------------------------------------------------------------------------------------------------------------------------------------------------------------------------------------------------------------------------------|
| Nursery Stock (Non-bearing Deciduous Fruit Trees, Nut Trees, Vines) Almond Apricot Apple Cherry Grape Kiwi Pear Pistachio Plum Prune Walnut | Aphid, Leafhoppers, Leafminers, San Jose Scale (Crawlers), Mealybugs, Japanese Beetle, Stink Bugs, Plant Bugs (Lygus), Whiteflies, Thrips | 1 – 2 lbs. (16 - 32 oz.) | Apply as needed for control of existing populations. | Apply Lancer Gold in 50 to 200 gallons of water per acre by ground and not less than 5 gallons of water per acre by air. |
| | Ants (excluding Carpenter, Fire, Harvester, and Pharaoh) | Foliar Spray 1.5 lbs. (24 oz.) | Apply as needed for control of existing populations. | Apply Lancer Gold in 100 to 200 gallons of water per acre. Spray individual trees for coverage with total application not to exceed specified rate in lbs. per acre. Length of residual activity will depend upon spray coverage and the amount of moisture following application. |
| | Fire Ant, Harvester Ant * | Drench Method: Mix 1.5 oz. in 5 gallons of water. Apply 1 gallon of mix to each mound area by sprinkling the mound until it is wet and treat a four (4) foot diameter circle around the mound. | For best results, apply the material in the early morning or late afternoon when the ants are most active. | Applications made under prolonged hot and dry conditions may be ineffective due to the location of the ants deep within the nest. Restriction: Do not treat mound more than once per season. |

* Not registered in California for control of Harvester Ants.

NON-CROP AREAS**FIELD BORDERS, FENCEROWS, ROADSIDES, DITCHBANKS, BORROW PITS**

Ground Application: Apply in 10 to 20 gallons of water per acre by conventional ground equipment to ensure thorough coverage.

Aerial Application:—Make applications in a minimum of 1-gallon-of water per acre (minimum 5 gallons per acre in California). Use sufficient carrier volume to provide thorough, uniform coverage.



Do not allow product to contact plants in bloom if bees are foraging in the treatment area.

| PESTS CONTROLLED | AMOUNT LANCER GOLD PER ACRE | APPLICATION INSTRUCTIONS | RESTRICTIONS |
|---------------------------------------------|----------------------------------------------------------------------------------------------------------------------------------------------------------------------------------------------------------|------------------------------------------------------------------------------------------------------------------------------------------------------------------------------------------------------------------------------------------------------------------------------------|-------------------------------------------------------------------------------------------------------------------------------------------------------------------------------------------------------------------------------------------------------------------------------------------------------|
| Grasshopper | 0.5 lb. (8 oz.) | Apply as needed for control of existing populations. For early to mid-season application, use the higher volumes when spraying heavier foliage. | Do not graze or feed vegetation cut from treated areas. Do not exceed a total of 0.4 lb imidacloprid a.i. per acre per year from all applications of all products containing this active ingredient. |
| Ants * (excluding Carpenter and Pharaoh) | Drench Method: Mix 1.5 oz. in 5 gallons of water. Apply 1 gallon of mix to each mound area by sprinkling the mound until it is wet and treat a four (4) foot diameter circle around the mound. | For best results, apply the material in the early morning or late afternoon when the ants are most active. Applications made under prolonged hot and dry conditions may be ineffective due to the location of the ants deep within the nest. Grass in treated area may be injured. | Do not graze or feed vegetation cut from treated areas. Apply to a maximum of 13 mounds per acre. Do not treat mound more than once per season. Do not exceed a total of 0.4 lb imidacloprid a.i. per acre per year from all applications of all products containing this active ingredient. |

* Not registered in California for control of Harvester Ants.

WASTELAND

Ground Application: Apply in 10 to 20 gallons of water per acre by conventional ground equipment to ensure thorough coverage.

Aerial Application: Make applications in a minimum of ½ gallon of water per acre (minimum 5 gallons per acre in California). Use sufficient carrier volume to provide thorough, uniform coverage.



Do not allow product to contact plants in bloom if bees are foraging in the treatment area.

| PESTS CONTROLLED | AMOUNT LANCER GOLD PER ACRE | APPLICATION INSTRUCTIONS | RESTRICTIONS |
|----------------------------------------------------------|-------------------------------|-----------------------------------------------------------------------------------------------------------------------------------------------------------------------------------------------------------------|------------------------------------------------------------------------------------------------------------------------------------------------------------------------------------------------------------------------------------------------------------|
| Black Grass Bugs, Grasshoppers, Mormon Crickets | 0.2 – 0.25 lb. (3 – 4 oz.) | Use higher volumes when spraying dense foliage. Adding a drift control agent may reduce evaporation of aerial sprays. Use higher rates within the specified range for severe insect infestations. | Do not make more than one application per year. Do not graze or feed vegetation cut from treated areas. Do not exceed a total of 0.4 lb imidacloprid a.i. per acre per year from all applications of all products containing this active ingredient. |

CONTAINER GROWN NURSERY STOCK**Restrictions**

- For repeat applications, use a minimum spray interval of 3 days for application rates up to and including 1 lb. product/A and a minimum of 7 days for rates greater than 1 lb. product/A.
- Do not apply this product, by any application method, to linden, basswood or other *Tilia* species in the State of Oregon



- Do not apply while bees are foraging in the treatment area. Do not apply to plants that are flowering. Only apply after all flower petals have fallen off.

| PLANTS | PESTS CONTROLLED | AMOUNT LANCER GOLD PER ACRE | TIME OF APPLICATION | FURTHER USE INSTRUCTIONS |
|--------------------------------------------------------------------------------------------------|---------------------------------------------------------------|-----------------------------|-------------------------------------------------------------------------------------------------------------------------------------------------------------------------------------------------------------------------------------------|-------------------------------------------------------------------------------------------------------------------|
| Container Grown Nursery Stock (Arborvitae, Azalea, Camellia, Rhododendron, Roses, Viburnum, Yew) | Black Vine Weevil, Strawberry Root Weevil | 1.5 lbs. (24 oz.) | Application should be made by mid-September for greenhouse stock and by mid-October for outdoor stock. Consult your local County Extension Agent for information on the identification and control of root weevils on ornamentals. | Apply the specified amount of Lancer Gold per 100 gallons of solution so as to thoroughly drench the root system. |
| | Ants (excluding Fire, Harvester, Carpenter, and Pharaoh ants) | 1.5 lbs. (24 oz.) | Apply as needed to control the pest. | |

ORNAMENTAL TREES AND SHRUBS

Restrictions

- Do not exceed 2 lbs. (32 oz.) of Lancer Gold per acre per application.
- Foliar applications to all trees except Flowering Crabapple and Douglas Fir must not be made more than once every 14 days. See "Further Use Instructions" for spray interval information regarding Flowering Crabapple and Douglas Fir.
- Low pressure handwand applications allowed only for control of fire ants as a mound treatment and when used on ornamental trees, shrubs, and floral plants grown for non-agricultural or non-commercial use.
- Do not exceed a total of 0.4 lb imidacloprid a.i. per acre per year from all applications of all products containing this active ingredient.
- Do not apply this product, by any application method, to linden, basswood or other *Tilia* species in the State of Oregon



- Do not apply while bees are foraging in the treatment area. Do not apply to plants that are flowering. Only apply after all flower petals have fallen off.

| PLANTS | PESTS CONTROLLED | AMOUNT LANCER GOLD PER ACRE | TIME OF APPLICATION | FURTHER USE INSTRUCTIONS |
|---------------------------------------------------------------------------|----------------------------------------------------------------------------|-----------------------------|---------------------------------------------------------------------------------------------------------------------------------------------------------------------|-----------------------------------------------------------------------------------------------------------------------------------------------------------------------------------------------------------------------------------------------------------------------------------------------------------------------------------|
| Trees and Shrubs (except Flowering Crabapple and Douglas Fir – see below) | Aphids, Bagworm, Birch Leafminer, Lace Bug, Leafroller, Tent Caterpillar * | 0.5 - 1 lb. (8 - 16 oz.) | Make application as the insects begin to appear. | Apply the specified amount of Lancer Gold in 100 gallons of water with a hydraulic sprayer. The addition of a suitable sticker improves control of Gypsy Moth larvae. |
| | Douglas Fir Tussock Moth Larvae, Gypsy Moth Larvae *, Webworms | 1 lb. (16 oz.) | Make application as the insects begin to appear. | Mist blower application: Adjust rates to 2 lbs. per 100 gallons of water for Gypsy Moth control and 1.5 lbs per 100 gallons of water for Tent Caterpillar control. |
| | Scales (Crawlers) | 1 lb. (16 oz.) | Make application as the crawlers begin to appear. Repeat applications, at a 2-week or more interval, may be necessary where there is continuous crawler production. | United Phosphorus, Inc. does not advise application be made to Huckleberry, Balm of Gilead, Cottonwood, Lombardy Poplar, and Viburnum suspensum as it may result in phytotoxicity in these plants. Nursery crops: Before treating large plantings, spray only a few plants and observe two weeks for phytotoxicity. |
| | Ponderosa Pine Needle Miner | 1 lb. (16 oz.) | Time of application is important. Consult your Farm Advisor or County Extension Agent. | Apply the specified amount of Lancer Gold in 100 gallons of water with a hydraulic sprayer as a full coverage spray. |

ORNAMENTAL TREES AND SHRUBS - continued

| PLANTS | PESTS CONTROLLED | AMOUNT LANCER-GOLD PER ACRE | TIME OF APPLICATION | FURTHER USE INSTRUCTIONS |
|---------------------------------------------------------------------------|---------------------------------------------------|-----------------------------|-----------------------------------------------------------------------------------------------------------------------------------------------------------------|----------------------------------------------------------------------------------------------------------------------|
| Trees and Shrubs (except Flowering Crabapple and Douglas Fir – see below) | Grasshopper | 1 lb. (16 oz.) | Make application as the grasshoppers begin to appear. | Apply the specified amount of Lancer Gold in 100 gallons of water with a hydraulic sprayer. |
| | California Oakworm, Cankerworm (Spring and Fall), | 0.5 – 1 lb. (8 – 16 oz.) | Make application as the insects begin to appear. Use the higher rate when larger larvae are present. | |
| | Nantucket Pine Tip Moth Larvae | 1.5 lbs. (24 oz.) | Time of application is important. Consult your Farm Advisor or County Extension Agent. Repeat applications will be required for subsequent generations. | |
| | Root Weevil Adults | 1.5 lbs. (24 oz.) | Apply when first feeding damage occurs. Repeat applications, at 4-week intervals until the first heavy frost, may be necessary for complete foliage protection. | Apply the specified amount of Lancer Gold in 100 gallons of water with a hydraulic sprayer as a full coverage spray. |
| | Box Elder Bug, Budworm, Leafhopper, Sawflies | 1.5 lbs. (24 oz.) | Make application as insects begin to appear. | Apply the specified amount of Lancer Gold in 100 gallons of water with a hydraulic sprayer as a full coverage spray. |
| | Japanese Beetle | 2 lbs. (32 oz.) | Make application as the beetle begins to appear. Repeat applications as necessary at 2-week intervals. | |
| | Elm Leaf Beetle (larvae) | 2 lbs. (32 oz.) | Make application as the larvae begin to appear. Lancer Gold will not prevent Elm Leaf Beetle eggs from hatching. | |

ORNAMENTAL TREES AND SHRUBS - continued

| PLANTS | PESTS CONTROLLED | AMOUNT LANCER GOLD PER ACRE | TIME OF APPLICATION | FURTHER USE INSTRUCTIONS |
|----------------------------------|-------------------------------------------|---------------------------------------------------------------|--------------------------------------------------------------------------------------------------------------------------------------------------------|-------------------------------------------------------------------------------------------------------------------------------------------------------------------------------------------------------------------------------------------------------------------------------------------------------------------------------------------------------------------------------------------------------------------------------------------------------------------------------------------------------------------------------------|
| Douglas Fir (Christmas Trees) | Douglas Fir Needle Midge | 1 lb. (16 oz.) | Application should be made no more than 2 weeks prior to bud burst. For additional pest management information, consult your County Extension Service. | Apply the specified amount of Lancer Gold in not less than 2 gallons of spray per acre by air or in 100 gallons of spray per acre by ground. Restriction: Do not make more than 1 application per season. |
| Flowering Crabapples | Aphid, Leafroller, Tent Caterpillar | 0.5 lb. (8 oz.) | Make application as the insects begin to appear. | Apply the specified amount of Lancer Gold in 100 gallons of water with a hydraulic sprayer. Restriction: Do not apply more often than 3 times in a growing season at 4-week intervals. Phytotoxicity has occurred on the following Crabapple varieties: Hopa, Ichonoski, Malusfloribunda, Pink Perfection, Red Wine and Snow Cloud. |
| Crepe Myrtle | Aphid | 4 to 6 level tbsp. (1.2 – 1.8 oz.) per 1 tbsp. of water | Make application as aphids begin to appear. | Make a paint-on slurry by mixing the specified amount of Lancer Gold with 1 tbsp. of water. Remove the loose bark from the trunk areas to be treated. Paint a band completely around each trunk to a width twice its diameter. Application should be made to trunks within a zone 6 to 12 inches above the ground and below the point where branching begins. For multi-trunk plants be certain to treat all trunks. For either single or multi-trunk plants, make application as low as possible within the treatment zone. |

GOLF COURSE TURFGRASS**Restrictions**

- Do not allow livestock to graze treated areas.
- Do not feed treated grass to livestock.
- Do not apply to turfgrass by air.
- Do not apply more than 8 lbs. Lancer Gold/A per year on golf course turfgrass.
- Do not apply more than 4 lbs. acephate a.i. and 0.4 lb. imidacloprid a.i. per acre per year on golf course turfgrass from all applications of all products containing these active ingredients.
- For repeat applications use a minimum spray interval of 3 days for application rates up to and including 1 lb. product /A and a minimum of 7 days for rates greater than 1 lb. product/A.
- Do not apply to turf that is frozen, waterlogged or is saturated with water. Turf in this condition will not allow the necessary vertical distribution of the active ingredient down into the soil.
- Do not allow runoff or puddling of irrigation water following application.
- Do not mow turf or lawn area until sufficient irrigation or rainfall has occurred so that uniformity of application will not be affected.
- Keep people and pets off treated area until dry
- Do not allow this product to contact plants in bloom if bees are foraging in the treatment area.



| PLANTS | PESTS CONTROLLED | AMOUNT LANCER GOLD PER 1000 SQ. FT. | TIME OF APPLICATION | FURTHER USE INSTRUCTIONS |
|--------------------------|-----------------------------------------------------------------------------------|----------------------------------------------|------------------------------------------------------------------------------------------------------------------------------------------------------------------------------------------------------------------------------------------------------------------------------|-----------------------------------------------------------------------------------------------------------------------------------------------------|
| Golf Course Turfgrass | Cutworm, Fall Armyworm, Yellow Striped Armyworm, Southern Armyworm | 0.8 – 1.8 oz. (2 – 5 lbs./A) | Make application as the insects appear. Repeat application at 2- week intervals may be necessary. | Apply the specified amount of Lancer Gold per 1,000 sq. ft. Use a minimum of 5 gallons water per 1,000 sq. ft. to obtain good coverage. |
| | Cinch Bug | 1.8 – 3 oz. (5 – 8 lbs./A) | Apply as needed for adult population knockdown (10 to 14 days). | Apply the specified amount of Lancer Gold per 1,000 sq. ft. Use 1 to 15 gallons water per 1,000 sq. ft. to obtain good coverage. |
| | Sod Webworm | 0.8 – 1.6 oz. (2 – 4 lbs./A) | Make application as sod webworms begin to appear. Use the highest rate when quick knockdown is needed or with heavy infestations. Repeat application may be necessary. Restriction: Do not repeat at more than 1-week intervals. | |
| | Leafhopper | 1.6 oz. (4 lbs./A) | Make application as the leafhoppers begin to appear. A repeat application at 1-week intervals may be necessary. | |

GOLF COURSE TURFGRASS - continued

| PLANTS | PESTS CONTROLLED | AMOUNT LANCER GOLD PER 1000 SQ. FT. | TIME OF APPLICATION | FURTHER USE INSTRUCTIONS |
|--------------------------|---------------------------------------------------------------------------------|----------------------------------------------|-------------------------------------------------------------------------------------------------------------------------------------------------------------------------------------------------------------------------------------------------------------------------------------|------------------------------------------------------------------------------------------------------------------------------------------------------------------------------------------------------------------------------------------------------------------------------------------------------------------------------------------------------------------------------------------------------------------------------------------------------------------------------------------------------------------------------------------------------------------------------------------------------------------------------------------------------------------------------------------------------------------------------------------------------------------------------------------------------------------------------------------------------------------------------------------|
| Golf Course Turfgrass | Mole Cricket (except California), Spittlebug (except California) | 1.6 – 2.8 oz. (4 – 7.8 lbs./A) | Make application as mole crickets begin to appear. For knockdown of existing populations, more than one application may be required throughout the growing season. For heavy infestations, use the higher labeled dosage rate. | Apply the specified amount of Lancer Gold per 1,000 sq. ft. Use 1 to 15 gallons of water per 1,000 sq. ft. to obtain good coverage. Apply during late afternoon or early evening hours and after an irrigation. Do not irrigate after application. The use of a lemon fragrance substance in the spray mix may enhance control by acting as a flushing agent and thus provide increased mole cricket contact with the Lancer Gold. The following lemon scented products have been shown to be effective flushing agents: Lemon Joy, Lemon Palmolive, and Mighty Myrt Products Manufacture Base Pure Lemon Fragrance. The use rate for these lemon- scented products is 2 tsp. Per gallon of water for small total mix volumes or 6 fl. oz. per 50 gallons of water for large total mix volumes. |
| | Greenbug (<i>Schizaphis graminun</i>), Grasshopper | 0.8 oz. (2 lbs./A) | Apply when insects or their damage first appears. Repeat as necessary. Restriction: Application is not to be repeated at more than 1- week intervals. | Apply the specified amount of Lancer Gold using 4 gallons of water per 1,000 sq. ft. to obtain good coverage. Restriction: Do not mow turfgrass for at least 24 hours after application. |
| | Black Turfgrass Ataenius (except California) | 2.2 – 3 oz. (6 – 8 lbs./A) | Apply when insects or their damage first appear. | Apply the specified amount of Lancer Gold per 1,000 sq. ft. Use a minimum of 5 gallons of water per 1,000 sq. ft. Irrigate lightly after application (not more than ½ inch). Use the higher labeled rate for severe infestations. |

SOD FARM TURFGRASS**Restrictions**

- Do not allow livestock to graze treated areas.
- Do not feed treated grass to livestock.
- Do not apply to turfgrass by air.
- Do not apply more than 6 lbs./A (3 lbs acephate) of Lancer Gold to sod farm turfgrass in any single application.
- User must allow at least 3 days between last application and harvesting of sod.
- Do not exceed a total of 0.4 lb imidacloprid a.i. per acre per year from all applications of all products containing this active ingredient.
- Do not apply to turf that is frozen, waterlogged or is saturated with water. Turf in this condition will not allow the necessary vertical distribution of the active ingredient down into the soil.
- Do not allow runoff or puddling of irrigation water following application.
- Do not allow this product to contact plants in bloom if bees are foraging in the treatment area.



| PLANTS | PESTS CONTROLLED | AMOUNT LANCER GOLD PER 1000 SQ. FT. | TIME OF APPLICATION | FURTHER USE INSTRUCTIONS |
|--------------------|-------------------------------------------------------------------------------------------------------|-------------------------------------|--------------------------------------------------------------------------------------------------------------------------------------------------------------------------------------------------------------------------------------------|-----------------------------------------------------------------------------------------------------------------------------------------|
| Sod Farm Turfgrass | Cutworm, Fall Armyworm, Grasshopper, Greenbug, Leafhopper, Southern Armyworm, Yellow Striped Armyworm | 0.8 – 1.8 oz. (2 – 5 lbs./A) | Make application as the insects appear. A repeat application at 2-week intervals may be necessary. | Apply the specified amount of Lancer Gold per 1,000 sq. ft. Use a minimum of 5 gallons water per 1,000 sq. ft. to obtain good coverage. |
| | Chinch Bugs, Mole Cricket (except California), Spittlebug (except California) | 1.8 – 2.2 oz. (5 – 6 lbs./A) | Apply as needed for adult population knockdown (10 to 14 days). | Apply the specified amount of Lancer Gold per 1,000 sq. ft. Use 1 to 15 gallons of water per 1,000 sq. ft. to obtain good coverage. |
| | Sod Webworm | 0.8 – 1.6 oz. (2 – 4 lbs./A) | Make application as sod webworms begin to appear. Use the higher rate when quick knockdown is needed or with heavy infestations. Repeat application may be necessary. Do not repeat application more than once every 7 days. | |

MOUND TREATMENT OF FIRE ANTS AND HARVESTER ANTS IN TURFGRASS**Restrictions**

- Do not allow livestock to graze treated areas.
- Do not feed treated grass to livestock.
- Do not treat mound more than once per season.
- Do not exceed a total of 0.4 lb imidacloprid a.i. per acre per year from all applications of all products containing this active ingredient.



- Do not allow this product to contact plants in bloom if bees are foraging in the treatment area.

| PLANTS | PESTS CONTROLLED | AMOUNT LANCER GOLD PER 1000 SQ. FT. | TIME OF APPLICATION | FURTHER USE INSTRUCTIONS |
|----------------------------------------------------------------------|---------------------------------------------|-------------------------------------------------------------------------------------------------------------------------------------------------------------------------------------------------------------------------------------------|------------------------------------------------------------------------------------------------------------------------------|------------------------------------------------------------------------------------------------------------------------------------------------------------------------------------------------|
| Turfgrass Residential, Recreational, and Commercial Turf | Imported Fire Ants and Harvester Ants | Drench Method: Mix 1.5 oz. in 5 gallons of water. Apply 1 gallon of mix to each mound area by sprinkling the mound until it is wet and treat a four (4) foot diameter circle around the mound. | For best results, apply the material in the early morning or late afternoon when the ants are most active. | Applications made under prolonged hot and dry conditions may be ineffective due to the location of the ants deep within the nest. Grass in treated areas may be injured. |

OUTDOOR AND PERIMETER SPRAY**Restrictions**

- Not for use on residential turfgrass.
- The use of low pressure handwand equipment for perimeter or wasp treatments is prohibited..
- Do not exceed a total of 0.4 lb imidacloprid a.i. per acre per year from all applications of all products containing this active ingredient.
- Do not apply this product, by any application method, to linden, basswood or other *Tilia* species in the State of Oregon
- Keep people and pets off treated area until dry



- Do not allow product to contact plants in bloom if bees are foraging in the treatment area.

| LOCATION | PESTS CONTROLLED | AMOUNT LANCER GOLD PER GALLON | TIME OF APPLICATION | FURTHER USE INSTRUCTIONS |
|----------------------------|---------------------------------------------------------------------------------------------------------|-------------------------------|---------------------------------------------------------------------------------------|--------------------------------------------------------------------------------------------------------------------------------------------------------------------------------------------------------------------------------------------------------------------------------------------------------------------------------------------------------------------------------------------------------------------------------------------------------------------------------------|
| Outdoor and Perimeter Area | Wasps | 2.4 oz. | Treat early or late in the day as wasps are generally less active during these times. | Apply the specified amount of Lancer Gold per each gallon of water used. Apply as a spot treatment to the nest, nest entrance, and surrounding areas where the wasps alight. |
| | Ants (excluding Fire, Harvester, Carpenter, and Pharaoh ants), Cockroaches, Crickets, Earwigs, Pillbugs | 2.4 oz. | Make application as insects appear. | Apply the specified amount of Lancer Gold per each gallon of water used. Apply to a band of soil 6 to 10 ft. adjacent to the structure and to a height of 2 to 3 ft. on the foundation where pests may be active or may find entrance. Also apply as a residual spray or with a paint brush to surfaces of buildings, window frames, shutters, entryways, screens, eaves, patios, garages, carports, around garage areas and other areas where these pests congregate. |

ORNAMENTAL PLANTS GROWN FOR CUT FLOWER PRODUCTION**Restrictions**

- Do not apply more than 1 lb. product per 100 gallons of water.
- For repeat applications use a minimum spray interval of 14 days.
- Do not exceed a total of 0.4 lb imidacloprid a.i. per acre per year from all applications of all products containing this active ingredient.



- Do not apply while bees are foraging in the treatment area. Do not apply to plants that are flowering. Only apply after all flower petals have fallen off.

| PLANT | PESTS CONTROLLED | AMOUNT LANCER GOLD PER 100 GALLONS | TIME OF APPLICATION | FURTHER USE INSTRUCTIONS |
|---------------------------------------------------|-----------------------------|------------------------------------|-------------------------------------------------------------------------|--------------------------------------------------------------------------------------------------------------------------------------------------------------------------------------------------------------------------------------------------------------------------------------------------------------------------------------------------------------------------------------------------------------------------------------------------------------------------------------------------------------------------------------------------------------------------------------------------------------------------------------------------------------------------------------------------------------------------------------------------------------------------------|
| Chrysanthemums, Daisies, Gladioli, Roses | Aphids, Lygus, Thrips | 1 lb. (16 oz.) | Treat as insects begin to appear. Repeat applications may be necessary. | <p>Apply the specified amount of Lancer Gold in 100 gallons of water with a hydraulic sprayer as a full coverage spray.</p> <p>Phytotoxicity has occurred on the following Chrysanthemum varieties: Albatross, Bonnie Jean, Dixie, Garland, Gem, Iceberg, Pride, Showoff, Statesman, Tally Ho, Westward Ho, and Wild Honey.</p> <p>Do not apply more often than once every 28 days to Chrysanthemums.</p> <p>Before treating large Chrysanthemum plantings, spray only a few plants and observe two weeks for varietal phytotoxicity. Applications to Chrysanthemums in flower may result in flower damage.</p> <p>Multiple applications may cause slight tip burn or marginal leaf necrosis on some varieties. Test on a few plants to determine varietal susceptibility.</p> |

**GREENHOUSE/SHADEHOUSE (Commercial Only) and OUTDOOR ORNAMENTAL
PLANTS, FLORAL CROPS, GROUND COVERS,
AND FOLIAGE PLANT CROPS (Plants Not Produced For Cut Flowers)**

Restrictions

- Not for residential greenhouse/shadehouse use.
- Do not apply more than 1.5 lbs. (24 oz.) of product per 100 gallons of water per acre.
- Do not apply with low pressure handwand equipment.
- For repeat applications use a minimum spray interval of 14 days.
- Do not apply under conditions involving possible drift to food, forage, and other plantings that might be damaged or the crops thereof rendered unfit for sale, use or consumption.
- Do not exceed a total of 0.4 lb imidacloprid a.i. per acre per year from all applications of all products containing this active ingredient.



- Do not apply while bees are foraging in the treatment area. Do not apply to plants that are flowering. Only apply after all flower petals have fallen off.

| PLANT | PESTS CONTROLLED | AMOUNT LANCER GOLD PER 100 GALLONS | TIME OF APPLICATION | FURTHER USE INSTRUCTIONS |
|-------------------------------|-------------------|------------------------------------|--------------------------------------------------------------------------------------------------------------------------------------------------------------------------|--------------------------------------------------------------------------------------------------------------------------------------------------------------------------------------------------------------------------------------------------------------------------------------------------------------------------------------------------------------------------------------------------------------------------------------------------------------------------------------------------------------------------------------------------------------------------------------------------------------------------------|
| Carnations, Chrysanthemums | Aphids, Thrips | 1 lb. (16 oz.) | <p>Apply as aphids begin to appear.</p> <p>Make application as thrips begin to appear or at the tight flower bud stage.</p> <p>Repeat applications may be necessary.</p> | <p>Apply the specified amount of Lancer Gold in 100 gallons of water with a hydraulic sprayer as a full coverage spray.</p> <p>Phytotoxicity has occurred on the following Chrysanthemum varieties: Albatross, Bonnie Jean, Dixie, Garland, Gem, Iceberg, Pride, Showoff, Statesman, Tally Ho, Westward Ho, and Wild Honey.</p> <p>Do not apply more often than once every 28 days to Carnations and Chrysanthemums.</p> <p>Before treating large Chrysanthemum plantings, spray only a few plants and observe two weeks for varietal phytotoxicity. Applications to Chrysanthemums in flower may result in flower damage.</p> |

**GREENHOUSE/SHADEHOUSE (Commercial Only) and OUTDOOR ORNAMENTAL
PLANTS, FLORAL CROPS, GROUND COVERS,
AND FOLIAGE PLANT CROPS (Plants Not Produced For Cut Flowers) - continued**

| PLANT | PESTS CONTROLLED | AMOUNT LANCER GOLD PER 100 GALLONS | TIME OF APPLICATION | FURTHER USE INSTRUCTIONS |
|--------------------------------------------------------------------------------------------------------------------------------------------------------------------------------------------------------------------------------------------------------|---------------------------------------------------------|----------------------------------------------------------------------------------------------|---------------------------------------------------------------------------------------------------------------------------------------------------------------------------------------------------------------------|------------------------------------------------------------------------------------------------------------------------------------------------------------------------------------------------------------------------------------------------------------------------------------------------------------------------------------------------------------------------------------------------------------------------------------------------------------------------------------------------------------------------------------------------------------------------------------------------------------------------------------------------------------------------------------------------------------------------------------------------------------------------------------------------------------------------------------|
| Anthuriums, Cacti, Calla Lily, Dahlias, Daisies, Easter Lily, Foliage Plants, Gladioli, Gypsophila, Orchids, Pachysandra, Pansy, Peony, Poinsettia, Sedum, Statice, Strawflower, Yarrow, Zinnia, | Aphids | 1 lb. (16 oz.) | Apply as aphids begin to appear. | Apply the specified amount of Lancer Gold in 100 gallons of water with a hydraulic sprayer as a full coverage spray. The addition of a wetting agent may be required on difficult to wet foliage. Caution: Phytotoxicity has occurred on the following foliage plants: <i>Blechnum gibbum</i> , <i>Cissus antartica</i> , <i>Ficus triangularis</i> , <i>Fittonia verschoffeltii</i> , <i>Maranta leuconeura kerchoveana</i> , <i>Pachystachya lutea</i> , <i>Plectranthus australis</i> , <i>Polypodium aureus</i> , <i>Polystichum</i> , <i>Pteris ensiformis</i> , <i>Tolmiea menziesii</i> . Before treating large plantings, spray only a few plants and observe 2 weeks for varietal phytotoxicity. Application of Lancer Gold on Poinsettias after bract formation may result in phytotoxicity on certain varieties. |
| | Mealybug, Thrips, Whitefly | 1 lb. (16 oz.) | Apply as the insects begin to appear. A repeat application at a 2-week interval may be necessary for control of mealybugs and whiteflies. | |
| | Scales (Crawlers) | 1 lb. (16 oz.) | Apply as crawlers begin to appear. Repeat applications, at 2-week or more intervals, may be necessary where there is continuous crawler production. | |
| | Sweetpotato Whitefly (except California) | 0.5 lb. (8 oz.) + 10 2/3 fl. oz. (0.2 lb. a.i.) TAME® 2.4 EC Spray | Apply when insects first appear. If a population is well established, make one application of the tank mix and follow 5 to 7 days later with TAME alone at 16 fl. oz./100 gallons. See TAME label for instructions. | For Sweetpotato whitefly control, apply the specified amount of Lancer Gold plus TAME 2.4 EC Spray as a tank mix at a volume necessary to obtain good coverage. Follow the TAME label for specific instructions on the alternation of TAME plus Lancer Gold and TAME alone and the rotation instructions to avoid potential resistance. |
| Roses | Aphids, Japanese Beetle, Leafroller, Thrips | 0.5 – 1.5 lbs. (16 – 24 oz.) | Apply as leafrollers begin to appear. Use the higher labeled rate within the specified range when large larvae are present. | Apply the specified amount of Lancer Gold in 100 gallons of water with a hydraulic sprayer as a full coverage spray. Application to Roses in flower may result in flower damage. |

STORAGE AND DISPOSAL

Do not contaminate water, food, or feed by storage and disposal.

PESTICIDE STORAGE: Keep pesticide in original container. Do not put concentrate or dilute product into food or drink containers. Store in cool, dry place. Protect from excessive heat. Do not contaminate food or foodstuffs. Do not store near feed or food.

PESTICIDE DISPOSAL: To avoid wastes, use all material in this container by application according to label directions. If wastes cannot be avoided, offer remaining product to a waste disposal facility or pesticide disposal program (often such programs are run by state or local governments or by industry).

CONTAINER HANDLING: Nonrefillable container. Do not reuse or refill this container. Completely empty bag into application equipment. Then offer for recycling if available or dispose of empty bag in a sanitary landfill or by incineration or, if allowed by state and local authorities, by burning. If burned, stay out of smoke.

IMPORTANT INFORMATION READ BEFORE USING PRODUCT

CONDITIONS OF SALE AND LIMITATION OF WARRANTY AND LIABILITY

NOTICE: Read the entire Directions for Use and Conditions of Sale and Limitation of Warranty and Liability before buying or using this product. If the terms are not acceptable, return the product at once, unopened, and the purchase price will be refunded.

The Directions for Use of this product reflect the opinion of experts based on field use and tests, and must be followed carefully. It is impossible to eliminate all risks associated with the use of this product. Crop injury, ineffectiveness or other unintended consequences may result because of such factors as manner of use or application, weather or crop conditions, presence of other materials or other influencing factors in the use of the product, which are beyond the control of United Phosphorus, Inc. or Seller. Handling, storage, and use of the product by Buyer or User are beyond the control of United Phosphorus, Inc. and Seller. To the extent consistent with applicable law, all such risks shall be assumed by Buyer and User, and Buyer and User agree to hold United Phosphorus, Inc. and Seller harmless for any claims relating to such factors.

TO THE EXTENT CONSISTENT WITH APPLICABLE LAW, UNITED PHOSPHORUS, INC. AND SELLER MAKE NO WARRANTIES OF MERCHANTABILITY OR OF FITNESS FOR A PARTICULAR PURPOSE NOR ANY OTHER EXPRESS OR IMPLIED WARRANTY EXCEPT AS STATED ON THIS LABEL.

To the extent consistent with applicable law, United Phosphorus, Inc. or Seller shall not be liable for any incidental, consequential or special damages resulting from the use or handling of this product and **THE EXCLUSIVE REMEDY OF THE USER OR BUYER, AND THE EXCLUSIVE LIABILITY OF UNITED PHOSPHORUS, INC. AND SELLER FOR ANY AND ALL CLAIMS, LOSSES, INJURIES OR DAMAGES (INCLUDING CLAIMS BASED ON BREACH OF WARRANTY, CONTRACT, NEGLIGENCE, TORT, STRICT LIABILITY OR OTHERWISE) RESULTING FROM THE USE OR HANDLING OF THIS PRODUCT, SHALL BE THE RETURN OF THE PURCHASE PRICE OF THE PRODUCT OR, AT THE ELECTION OF UNITED PHOSPHORUS, INC. OR SELLER, THE REPLACEMENT OF THE PRODUCT.**

United Phosphorus, Inc. and Seller offer this product, and Buyer and User accept it, subject to the foregoing conditions of sale and limitations of warranty and of liability, which may not be modified except by written agreement signed by the duly authorized representative of United Phosphorus, Inc.

TANK MIXES

NOTICE: Tank mixing or use of this product with any other product which is not specifically and expressly authorized by the label shall be the exclusive risk of user, applicator and/or application advisor.

Read and follow the entire label of each product to be used in the tank mix with this product.

- LANCER GOLD® - Reg. TM of United Phosphorus, Inc.
- ASANA® - Reg. TM of E.I. DuPont de Nemours & Co., for esfenvalerate insecticide
- BAYTHROID® - Reg. TM of Bayer Crop Protection for cyfluthrin synthetic pyrethroid.
- BIFENTURE® - Reg. TM of United Phosphorus, Inc. for bifenthrin insecticide-miticide.
- DANITOL® - Reg. TM of Valent USA Corporation for fenpropathrin insecticide-miticide.
- LAMBDA-CY™ EC Insecticide-RUP - Reg. TM of United Phosphorus, Inc. for lambda-cyhalothrin insecticide.
- LORSBAN® - Reg. TM of Dow Agro Sciences for chlorpyrifos insecticide.
- UP-CYDE® - Reg. TM of United Phosphorus, Inc for permethrin insecticide.
- DEADHATCH® - Reg. TM of Valent U.S.A. Corporation

Rev. [EPA Approval Date]

SUBLABEL FOR SEED TREATMENT

.....

| | | | | |
|-------|---|---|----|--------------|
| GROUP | 1 | & | 4A | INSECTICIDES |
|-------|---|---|----|--------------|

LANCER GOLD[®] Insecticide

A dry flowable mixture of two systemic insecticides for seed treatment uses

ACTIVE INGREDIENTS:

| | |
|-----------------------------------------------------------------------------------|-------|
| Acephate: (O,S-Dimethyl acetylphosphoramidothioate..... | 50.0% |
| Imidacloprid – 1-[(6-Chloro-3-pyridinyl)methyl]-N-nitro-2-imidazolidinimine | 1.8% |
| OTHER INGREDIENTS..... | 48.2% |
| TOTAL | 100% |

Contains 0.5 lb. acephate and 0.018 lb. imidacloprid per pound of product.

KEEP OUT OF REACH OF CHILDREN**CAUTION**

Si usted no entiende la etiqueta, busque a alguien para que se la explique a usted en detalle.
(If you do not understand the label, find someone to explain it to you in detail.)

| FIRST AID | |
|------------------------------------------------------------------------------------------------------------------------------------------------------------------------------------------------------------------------|-------------------------------------------------------------------------------------------------------------------------------------------------------------------------------------------------------------------------------------------------------------------------------------------------------------------------------------|
| If swallowed | <ul style="list-style-type: none"> Call poison control center or doctor immediately for treatment advice. Have person sip a glass of water if able to swallow. Do not induce vomiting unless told to by a poison control center or doctor. Do not give anything by mouth to an unconscious person. |
| If on skin or clothing | <ul style="list-style-type: none"> Take off contaminated clothing. Rinse skin immediately with plenty of water for 15-20 minutes. Call a poison control center or doctor for treatment advice. |
| If in eyes | <ul style="list-style-type: none"> Hold eye open and rinse slowly and gently with water for 15-20 minutes. Remove contact lenses, if present, after the first 5 minutes, then continue rinsing eye. Call a poison control center or doctor for treatment advice. |
| Have the product container or label with you when calling a poison control center or doctor, or going for treatment. FOR EMERGENCY MEDICAL ASSISTANCE, CALL THE ROCKY MOUNTAIN POISON CENTER at 1-866-673-6671. | |
| NOTE TO PHYSICIAN | |
| Acephate is a cholinesterase inhibitor. If signs of cholinesterase inhibition appear, atropine is antidotal. 2-PAM may also be used in conjunction with atropine but should not be used alone. | |

**FOR CHEMICAL EMERGENCY: Spill, leak, fire, exposure, or accident, call
CHEMTREC at 1-800-424-9300**

EPA Reg. No. 70506-242

EPA Est. No. _____

Net Contents: _____ Pounds

Batch/Lot No. _____

United Phosphorus, Inc.
630 Freedom Business Center, Suite 402
King of Prussia, PA 19406
1-800-438-6071

**PRECAUTIONARY STATEMENTS
HAZARDS TO HUMANS AND DOMESTIC ANIMALS
CAUTION**

Harmful if swallowed. Harmful if absorbed through skin. Avoid contact with skin, eyes, or clothing.

Personal Protective Equipment (PPE)

Applicators, mixers, loaders, and other handlers must wear:

- Long-sleeved shirt and long pants
- Chemical-resistant gloves made of any waterproof material for all mixers and loaders and for applicators using hand-held application equipment.
- Shoes plus socks.

Follow manufacturer's instructions for cleaning/maintaining personal protective equipment (PPE). If no such instructions for washables exist, use detergent and hot water. Keep and wash PPE separately from other laundry.

Engineering Controls Statements

When handlers use closed systems, enclosed cabs, or aircraft in a manner that meets the requirements listed in the Worker Protection Standard for agricultural pesticides [40 CFR 170.240(d)(4-6)], the handler PPE requirements may be reduced or modified as specified in the WPS.

USER SAFETY RECOMMENDATIONS

Users should:

- Wash thoroughly with soap and water after handling and before eating, drinking, chewing gum, using tobacco or using the toilet.
- Remove clothing/PPE immediately if pesticide gets inside. Then wash thoroughly and put on clean clothing.
- Remove PPE immediately after handling this product. Wash the outside of gloves before removing. As soon as possible, wash thoroughly and change into clean clothing.

ENVIRONMENTAL HAZARDS

This pesticide is toxic to birds and wildlife, and highly toxic to aquatic invertebrates.

Do not apply directly to water, areas where surface water is present or to intertidal areas below the mean high water mark. Do not contaminate water when disposing of equipment washwaters.

Exposed treated seed may be hazardous to birds and other wildlife. Dispose of all excess treated seed and seed packaging by burial away from bodies of water.

This product is highly toxic to bees exposed to direct treatment or residues on blooming crops, plants or weeds. Do not apply this product or allow it to drift to blooming crops, plants or weeds if bees are foraging the treatment area.

This chemical demonstrates the properties and characteristics associated with chemicals detected in ground water. The use of this chemical in areas where soils are permeable, particularly where the water table is shallow, may result in groundwater contamination.

Endangered Species Notice

Under the Endangered Species Act, it is a Federal Offense to use any pesticide in a manner that results in the death of a member of an endangered species. Consult your local county bulletin,

County Extension Agent, or Pesticide State Lead Agency for information concerning endangered species in your area.

DIRECTIONS FOR USE

It is a violation of Federal Law to use this product in a manner inconsistent with its labeling.

READ ENTIRE LABEL. USE STRICTLY IN ACCORDANCE WITH PRECAUTIONARY STATEMENTS AND DIRECTIONS AND WITH APPLICABLE STATE AND FEDERAL REGULATIONS.

Do not apply this product in a way that will contact workers or other persons, either directly or through drift. Only protected handlers may be in the area during application. For any requirements specific to your State or Tribe, consult the agency responsible for pesticide regulation.

RESTRICTIONS

- Treated seed must not be used for or mixed with food or animal feed or processed for oil.
- Seed commercially treated with this product must be labeled in accordance with all applicable requirements of the Federal Seed Act
- Not for use on agricultural establishments in hopper-box, planter-box, slurry-box or other seed treatment applications at, or immediately before, planting.
- Do not feed gin trash or forage to livestock.
- Do not allow animals to graze on treated areas.
- Apply a maximum of one application per season
- When using formulations that do not contain dye, compliance with 21 CFR Chapter 1, Section 2.5 requires that all seed treated with a pesticide must be colored to distinguish from, and prevent inadvertent use as, food for man or feed for animals. Any dye or colorant added to treated seed must be cleared for use under 40 CFR, Part 180.1001.

SEED BAG LABELING REQUIREMENTS

Seed commercially treated with this product must be labeled in accordance with all applicable requirements of the Federal Seed Act. The user of this product is responsible for ensuring that the seed bag meets all requirements under the Federal Seed Act.

THE FEDERAL SEED ACT REQUIRES THAT BAGS CONTAINING TREATED SEEDS BE LABELED WITH THE FOLLOWING STATEMENTS:

- This seed has been treated with Lancer Gold Insecticide (acephate and imidacloprid).
- DO NOT use for feed, food, or oil purposes

THE US ENVIRONMENTAL PROTECTION AGENCY REQUIRES THE FOLLOWING STATEMENTS ON BAGS CONTAINING SEEDS TREATED WITH LANCER GOLD (acephate and imidacloprid):

- Pollinator Precautions: Imidacloprid is highly toxic to bees. Ensure that planting equipment is functioning properly in accordance with manufacturer specifications to minimize seed coat abrasion during planting to reduce dust which can drift to blooming crops or weeds.
- Store away from feeds and foodstuffs
- Wear long-sleeved shirt, long pants, and chemical-resistant gloves when handling treated seed

- Treated seed must be adequately covered with soil at planting
- Exposed treated seed may be hazardous to birds. Cover or incorporate spilled treated seeds. Excess or leftover seed may be double-sown around the headland or buried away from bodies of water in accordance with local requirements.
- Dispose of seed packaging in accordance with local requirements
- DO NOT contaminate water bodies when disposing of planting equipment washwater
- DO NOT allow children, pets, or livestock to have access to treated seed.
- In the event of a crop failure or harvest of a crop grown from Lancer Gold Insecticide treated seed, the field may be replanted immediately to any crop for which tolerances exist for residues of acephate AND imidacloprid on that crop. For all other crops (crops without established tolerances for acephate AND imidacloprid), a 12-month plant-back interval must be observed.

MIXING INSTRUCTIONS

To prepare the application mixture, fill the spray tank one-third to one-half full of clean water with agitation running and add the required amount of LANCER GOLD Insecticide to the spray tank. Add remaining amount of water needed for the desired application volume. Maintain sufficient agitation during both mixing and application. LANCER GOLD Insecticide may be applied in tank mixtures with other pesticides and/or fertilizer solutions. Please refer to the compatibility note below. When tank mixing mixtures of LANCER GOLD Insecticide and other products, prepare the tank mixture as recommended above and follow the suggested mixing order below. Read and follow the entire label of each product to be used in tank mixes with this product.

Mixing order

Tank mixtures of LANCER GOLD Insecticide with other pesticides and/or fertilizers can be prepared after the LANCER GOLD Insecticide and water has been agitated and thoroughly mixed. Add wettable powders or wettable granules next, flowable formulations and then emulsifiable concentrates last. Do not add an additional component until the previous has been thoroughly mixed. If a fertilizer solution is added, a fertilizer-pesticide compatibility agent may be required. Maintain constant agitation during both mixing and application to ensure uniformity of the spray mixture. Dissolution may be slowed by cold water, low levels of agitation, or water containing high concentrations of boron or sulfur. If tank mixing LANCER GOLD, follow all precautions and limitations on labeling of all products used in mixture.

Compatibility

Test the compatibility of the intended tank mixture before adding LANCER GOLD Insecticide to the spray mixture as follows: Add proportional amounts of each ingredient in the appropriate order to a pint or quart jar. Cap the jar and shake thoroughly for approximately 5 minutes and let stand for 5 minutes. Do not use if there is the formation of a precipitate that does not readily re-disperse.

USE DIRECTIONS FOR COMMERCIALLY TREATED COTTONSEED

Application Instructions: Lancer Gold contains water soluble systemic insecticides which help to reduce injury to cotton seedlings by several insects. Lancer Gold can be mixed in the slurry tank with most of the fungicide seed treatments in common use. It can also be applied as a separate treatment using enough water to give adequate coverage of the seed.

| PESTS CONTROLLED | LANCER GOLD APPLICATION RATE PER 100 LBS COTTONSEED | APPLICATION INSTRUCTIONS |
|---------------------------------------------------------------------------------|-------------------------------------------------------------------------------------|---------------------------------------------------------------------------------------------------------------------------------------------------------------------------------------------------------------------------------------------------------------------------------------------------------------------------------------------------------------------------------|
| Black (Greasy) Cutworm, Cotton aphids, Thrips (including Western Flower Thrips) | 0.56 – 0.8 lbs. (9 – 12.8 oz.) Lower rate not approved for use in California | Provides effective reduction of thrips and cotton aphids for up to three weeks after planting. Provides effective reduction of Black (Greasy) Cutworm from planting through the 3 rd to 4 th leaf stage of development. When planting into fields where large cutworms are present (5 th instar and larger), economic damage may occur. |

STORAGE AND DISPOSAL

Do not contaminate water, food, or feed by storage and disposal.

PESTICIDE STORAGE: Keep pesticide in original container. Do not put concentrate or dilute product into food or drink containers. Store in cool, dry place. Protect from excessive heat. Do not contaminate food or foodstuffs. Do not store near feed or food.

PESTICIDE DISPOSAL: To avoid wastes, use all material in this container by application according to label directions. If wastes cannot be avoided, offer remaining product to a waste disposal facility or pesticide disposal program (often such programs are run by state or local governments or by industry).

CONTAINER HANDLING: Nonrefillable container. Do not reuse or refill this container. Completely empty bag into application equipment. Then offer for recycling if available or dispose of empty bag in a sanitary landfill or by incineration or, if allowed by state and local authorities, by burning. If burned, stay out of smoke.

**IMPORTANT INFORMATION
READ BEFORE USING PRODUCT****CONDITIONS OF SALE AND LIMITATION OF WARRANTY AND LIABILITY**

NOTICE: Read the entire Directions for Use and Conditions of Sale and Limitation of Warranty and Liability before buying or using this product. If the terms are not acceptable, return the product at once, unopened, and the purchase price will be refunded.

The Directions for Use of this product reflect the opinion of experts based on field use and tests, and must be followed carefully. It is impossible to eliminate all risks associated with the use of this product. Crop injury, ineffectiveness or other unintended consequences may result because of such factors as manner of use or application, weather or crop conditions, presence of other materials or other influencing factors in the use of the product, which are beyond the control of United Phosphorus, Inc. or Seller. Handling, storage, and use of the product by Buyer or User are beyond the control of United Phosphorus, Inc. and Seller. To the extent consistent with applicable law, all such risks shall be assumed by Buyer and User, and Buyer and User agree to hold United Phosphorus, Inc. and Seller harmless for any claims relating to such factors.

TO THE EXTENT CONSISTENT WITH APPLICABLE LAW, UNITED PHOSPHORUS, INC. AND SELLER MAKE NO WARRANTIES OF MERCHANTABILITY OR OF FITNESS FOR A PARTICULAR PURPOSE NOR ANY OTHER EXPRESS OR IMPLIED WARRANTY EXCEPT AS STATED ON THIS LABEL.

To the extent consistent with applicable law, United Phosphorus, Inc. or Seller shall not be liable for any incidental, consequential or special damages resulting from the use or handling of this product and **THE EXCLUSIVE REMEDY OF THE USER OR BUYER, AND THE EXCLUSIVE LIABILITY OF UNITED PHOSPHORUS, INC. AND SELLER FOR ANY AND ALL CLAIMS, LOSSES, INJURIES OR DAMAGES (INCLUDING CLAIMS BASED ON BREACH OF WARRANTY, CONTRACT, NEGLIGENCE, TORT, STRICT LIABILITY OR OTHERWISE) RESULTING FROM THE USE OR HANDLING OF THIS PRODUCT, SHALL BE THE RETURN OF THE PURCHASE PRICE OF THE PRODUCT OR, AT THE ELECTION OF UNITED PHOSPHORUS, INC. OR SELLER, THE REPLACEMENT OF THE PRODUCT.**

United Phosphorus, Inc. and Seller offer this product, and Buyer and User accept it, subject to the foregoing conditions of sale and limitations of warranty and of liability, which may not be modified except by written agreement signed by the duly authorized representative of United Phosphorus, Inc.

LANCER GOLD® - Reg. TM of United Phosphorus, Inc.

Rev. [EPA Approval Date]