



UNITED STATES ENVIRONMENTAL PROTECTION AGENCY
WASHINGTON, DC 20460

OFFICE OF CHEMICAL SAFETY
AND POLLUTION PREVENTION

October 30, 2020

Ms. Juli Mann, Agent
Petro-Canada Lubricants, Inc.
d/b/a Intelligro, A Suncor Energy Business
c/o Steptoe & Johnson, LLP
1330 Connecticut Ave. NW
Washington, DC 20036

Subject: Label and CSF Amendment – Revised CSFs (Basic, Alt.#1, Alt.#2); Revised First Aid and Precautionary Statements; Interim Decision Label Mitigation
Product Name: PURESpray™ GREEN FORMULA 3
EPA Registration Number: 69526-14
Application Dates: August 15, 2018; June 4, 2020; September 15, 2020
Decision Numbers: 545882; 563505; 566871

Dear Ms. Mann:

The amended label and CSF(s) referred to above, submitted in connection with registration under the Federal Insecticide, Fungicide and Rodenticide Act, as amended, are acceptable. This approval does not affect any conditions that were previously imposed on this registration. You continue to be subject to existing conditions on your registration and any deadlines connected with them.

The Agency, in accordance with the Federal Insecticide, Fungicide and Rodenticide Act (FIFRA), as amended, has completed reviewing all of the information submitted with your application to support the Registration Review of the above referenced product in connection with the Aliphatic Solvents Interim Decision, and has concluded that your submission is acceptable.

A stamped copy of your labeling is attached for your records. This labeling supersedes all previously accepted labeling. You must submit one copy of the final printed labeling before you release the product for shipment with the new labeling. In accordance with 40 CFR 152.130(c), you may distribute or sell this product under the previously approved labeling for 12 months from the date of this letter. After 18 months, you may only distribute or sell this product if it bears this new revised labeling or subsequently approved labeling. "To distribute or sell" is defined under FIFRA section 2(gg) and its implementing regulation at 40 CFR 152.3.

Please note that the record for this product currently contains the following CSF(s):

- Basic CSF dated 08/15/2018
- Alternate CSF 1 dated 08/15/2018
- Alternate CSF 2 dated 08/15/2018

SEE NEXT PAGE

Should you wish to add/retain a reference to the company's website on your label, then please be aware that the website becomes labeling under the Federal Insecticide Fungicide and Rodenticide Act and is subject to review by the Agency. If the website is false or misleading, the product would be misbranded and unlawful to sell or distribute under FIFRA section 12(a)(1)(E). 40 CFR 156.10(a)(5) list examples of statements EPA may consider false or misleading. In addition, regardless of whether a website is referenced on your product's label, claims made on the website may not substantially differ from those claims approved through the registration process. Therefore, should the Agency find or if it is brought to our attention that a website contains false or misleading statements or claims substantially differing from the EPA approved registration, the website will be referred to the EPA's Office of Enforcement and Compliance.

Your release for shipment of the product constitutes acceptance of these conditions. If these conditions are not complied with, the registration will be subject to cancellation in accordance with FIFRA section 6. If you have any questions, please contact Debra Rate by phone at (703) 306-0309, or via email at rate.debra@epa.gov.

Sincerely,



Michael Walsh
Product Manager 11
Invertebrate & Vertebrate Branch 2
Registration Division
Office of Pesticide Programs

Attachment

{Note to Reviewer: Braces { } indicate information that will not be on the final label.
Brackets [] indicate optional text that may or may not be on the final label.
Parentheses () indicate text that will appear on the final label in parenthesis. "/" indicates alternate language.}

Master Label - identifying market sub-labels

{Sub-label A: Product mixed by User}

{Front panel located on front of container and booklet affixed to back of container}

PURESPRAY™ GREEN FORMULA 3

FOR RESIDENTIAL USE ONLY

ACTIVE INGREDIENT:	BY WEIGHT
Mineral Oil*:	98.00%
Inert Ingredients:.....	<u>2.00%</u>
Total:	100.00%
Unsulfonated Residue of the Oil.....	99.00%
	(Minimum)
Aromatic Composition by ASTM D2140	0.00%

*Contains Petroleum Distillates

**KEEP OUT OF REACH OF CHILDREN
CAUTION**

See below/back panel/side panel/inside/booklet for additional precautionary statements.

NET CONTENTS: _____

{BATCH CODE WILL APPEAR ON IMMEDIATE CONTAINER}

{back panel and booklet}

MADE IN CANADA (MAY CONTAIN IMPORTED PARTS) FOR:

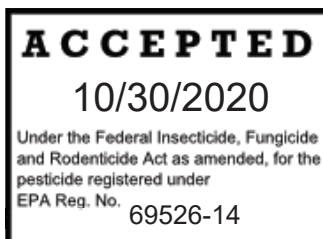
**Intelligro
2310 Lakeshore Road West
Mississauga, Ontario L5J 1K2
Canada
1-844-388-2665**

™ Trademark of Suncor Energy Inc. Used under license.
Patent(s):www.suncor.com/patents

EPA REG NO. 69526-14

EPA EST. NO. 79693-CAN-001

{OMRI Seal graphic}



{Note to Reviewer: Braces { } indicate information that will not be on the final label.
 Brackets [] indicate optional text that may or may not be on the final label.
 Parentheses () indicate text that will appear on the final label in parenthesis. "/" indicates alternate language.}

FIRST AID	
Have the product container or label with you when calling a poison control center or doctor or going for treatment.	
If swallowed:	<ul style="list-style-type: none"> • Immediately call a poison control center or doctor for treatment advice. • Do not induce vomiting unless told to by a poison control center or doctor. • Do not give any liquid to the person. • Do not give anything by mouth to an unconscious person.
If on skin or clothing:	<ul style="list-style-type: none"> • Take off contaminated clothing. • Rinse skin immediately with plenty of water for 15-20 minutes. • Call a poison control center or doctor for treatment advice.
If in eyes:	<ul style="list-style-type: none"> • Hold eye open and rinse slowly and gently for 15-20 minutes. • Remove contact lenses, if present, after the first 5 minutes, then continue rinsing eye. • Call a poison control center or doctor for treatment advice.
FOR A MEDICAL EMERGENCY INVOLVING THIS PRODUCT CALL: Intelligro.: 1-844-388-2665, CANUTEC TRANSPORTATION: 613-996-6666, OR a U.S. POISON CONTROL CENTER at 1-800-222-1222.	
NOTE TO PHYSICIAN: Contains Petroleum distillate. Do not induce vomiting since vomiting may induce aspiration pneumonia.	

PRECAUTIONARY STATEMENTS

HAZARDS TO HUMANS AND DOMESTIC ANIMALS

CAUTION: Harmful if swallowed or absorbed through the skin. Causes moderate eye irritation. Prolonged or frequently repeated skin contact may cause allergic reaction in some individuals. This product is a potential skin sensitizer. Avoid contact with eyes, skin or clothing. Wash hands thoroughly with soap and water after handling, before eating, drinking, chewing gum, using tobacco or using the toilet. Remove contaminated clothing and wash clothing before reuse. Wear gloves made of any water-proof material and shoes plus socks. Wash clothing before reuse using detergent and hot water.

{booklet}

PureSpray™ Green Formula 3 is a concentrate and must be mixed with water according to the mixing directions inside this booklet. Follow the specified dilution rate for the particular plant and pest being sprayed.

READ THIS ENTIRE LABEL BEFORE USING THIS PRODUCT.

ENVIRONMENTAL HAZARDS

This product is toxic to aquatic invertebrates. Do not apply directly to water, or to areas where surface water is present, or to intertidal areas below the mean highwater mark. Do not contaminate water when disposing of equipment wash water or rinsate. Drift and runoff may be hazardous to aquatic organisms in water adjacent to treated areas. Avoid drift or run off into storm drains, drainage ditches, or surface waters. Applying this product in calm weather when rain is not predicted for the next 24 hours will help to maximize the chances that wind, or rain will not blow or wash pesticide off the

{Note to Reviewer: Braces { } indicate information that will not be on the final label.
Brackets [] indicate optional text that may or may not be on the final label.
Parentheses () indicate text that will appear on the final label in parenthesis. "/" indicates alternate language.}

treatment area. Rinsing application equipment over the treated area will help avoid run off to water bodies or drainage systems.

DIRECTIONS FOR USE

It is a violation of Federal law to use this product in a manner inconsistent with its labeling.

USE RESTRICTIONS

- Do not enter or allow others to enter treated areas until sprays have dried.
- Do not exceed the maximum application rates specified on this label or apply this product more often than this label specifies.
- Do not spray wet plants.
- Do not apply this product when the temperature is above 90°F or below 40°F.
- Do not apply this product during periods of prolonged high temperature combined with high humidity. Horticultural oils interfere with or slow plant transpiration and respiration during the period of evaporation.
- Do not spray plants that are under stress from drought or disease.
- Do not apply this product to oil-sensitive plant varieties.
- Do not mix this product with sulfur or sulfur-containing products.
- On Grapes, do not apply sulfur within 10 days before or after use of this product. On other crops, do not apply sulfur within 14 days before or after use of this product.

USE PRECAUTIONS

Keep the oil container tightly closed in storage to prevent entry of water. All horticultural oils interfere with or slow plant transpiration and respiration during the period of evaporation. Therefore, do not spray plants under stress (i.e., drought, disease) and do not apply during periods of prolonged high temperature combined with high relative humidity.

- Certain plant species may be sensitive to oil. Test-spray 1 to 3 plants and observe their responses to treatment for several days before general spraying.
- Use caution when spraying open blooms. Bleaching and spotting of open blooms have been observed.
- The effectiveness of this product may be reduced if prolonged temperatures below 50° F are experienced due to the reduced respiration rate of insects at such temperatures.
- Protect painted surfaces, carpets, and furnishings from overspray. This product may cause discoloration.

VOLUME CONVERSION TABLE

1 Gallon = 4 Quarts = 8 Pints = 128 Ounces
1 Ounce = 2 Tablespoons = 6 Teaspoons
1 Tablespoon = 3 Teaspoons

{Note to Reviewer: Braces { } indicate information that will not be on the final label.
Brackets [] indicate optional text that may or may not be on the final label.
Parentheses () indicate text that will appear on the final label in parenthesis. "/" indicates alternate language.}

MIXING DIRECTIONS

Make sure the spray equipment to be used is clean, dry and odor free.

1. Fill the spray tank or bottle 1/2 full with water.
2. SHAKE THE CONTAINER OF **PureSpray™ Green Formula 3** VIGOROUSLY PRIOR TO MEASURING OUT THE SPECIFIED AMOUNT.
3. Add the appropriate amount of **PureSpray™ Green Formula 3** to the water and shake.
4. Fill the remaining 1/2 of the spray tank or bottle with water and shake again. The solution should look milky. If it does not, do not use it.
5. During application shake the solution frequently. Do not apply to plants if the solution has been sitting for more than 10 minutes without shaking it before resuming application.
6. Do not premix **PureSpray™ Green Formula 3** and water. Mix just enough for immediate use.
7. 2 tablespoons = 1 fluid ounce. 4 tablespoons = 1/4 cup = 2 fluid ounces.

APPLICATION RATES & INSTRUCTIONS

This product should be applied in the early evening or the early morning.

The targeted plant and pest must be completely covered by the spray solution for it to be effective.

Spray for optimum coverage of leaf surfaces.

Unless otherwise specified on this label, this product may be applied every 7 to 21 days.

This product may be applied up to the day of harvest, except for Table Grapes.

All Season Horticultural Spray:

DORMANT STAGE: Before buds reveal the green tissue.

DELAYED DORMANT STAGE: When the leaves of the blossom buds are out 1/4 to 1/2 inch.

GROWING SEASON: Period during which plants and crops may be grown.

GREEN TIP STAGE: When leaves of blossom buds are bursting: show about 1/8 to 1/4 inch of green color.

FOLIAR SPRAY: When leaves are open and actively growing.

{Note to Reviewer: Braces { } indicate information that will not be on the final label.

Brackets [] indicate optional text that may or may not be on the final label.

Parentheses () indicate text that will appear on the final label in parenthesis. "/" indicates alternate language.}

OUTDOORS FRUIT AND NUT CROPS			
CROP	PESTS	TIMING & APPLICATION RATE (Tablespoons (oz) of PureSpray™ Green Formula 3 per 1 Gallon of Water)	RESTRICTIONS/COMMENTS
ALMONDS APRICOTS CHERRIES NECTARINES PEACHES PISTACHIO	Black Scale, European Fruit Lecanium Scale, Frosted Scale, Olive Scale, San Jose Scale, Brown Mite Eggs, European Red Mite Eggs, Aphid Eggs, Fruit Tree Leafroller* (Eggs), Wintering Phytocoris (only on pistachio), Tent Caterpillars*	DORMANT AND DELAYED DORMANT: Use 2.5-7.5 tbsp. (1.25-3.75 oz) For use on pistachio, apply as a dormant treatment and/or after harvest. Re-spray as needed.	
	Terrapin Scale	DELAYED DORMANT: Use 5.0-7.5 tbsp. (2.25-3.75 oz)	
	Cottony Peach Scale	DORMANT: Use 5.0-7.5 tbsp. (2.5-3.75 oz)	
	Powdery Mildew (Cherries, Nectarines and Peaches only)	FOLIAR SPRAY: Cherries: Use 2.5-5.0 tbsp. (1.25-2.5 oz) Nectarines/Peaches: Use 2.5-5.0 tbsp. (1.25-2.5 oz) Spray as needed.	
	Scales, Two-spotted Spider Mite, Pacific Mite, European Red Mite, Brown Mite	FOLIAR SPRAY: 1.5-4.0 tbsp. (0.75-2.0 oz) Spray as needed.	
	White Peach Scale on Peaches: Only for use in Georgia, Florida, South Carolina, North Carolina, and Alabama.	DORMANT: Use 4.0-5.0 tbsp. (2.0-2.5 oz) Apply before buds begin to swell in the spring. Make 2 applications 7-14 days apart.	
APPLES	European Fruit Lecanium Scale, Olive Scale, San Jose Scale, European Red Mite Eggs, Rust Mite, Rosy Apple Aphid Eggs, Apple Aphid Eggs	DORMANT OR DELAYED DORMANT: Use 2.5-5.0 tbsp. (1.25-2.5 oz) Rust mite: Apply 4.0 -5.0 tbsp. (2.0-2.5 oz) during the delayed dormant timing. Spray as needed.	
	Codling Moth*		
	San Jose Scale Forbes Scale	DORMANT, GREEN TIP TO DELAYED DORMANT: Use 2.5-5.0 tbsp. (1.25-2.5 oz) Spray as needed.	
	Fruit Tree Leafroller, Apple Red Bug, Scurfy Scale	GREEN TIP TO DELAYED DORMANT: Use 2.5-7.5 tbsp. (1.25-3.75 oz)	
European Red Mite		European Red Mite: Delayed Dormant application is preferred. Re-apply as needed.	

*Crop or pest not approved for use in California

{Note to Reviewer: Braces { } indicate information that will not be on the final label.

Brackets [] indicate optional text that may or may not be on the final label.

Parentheses () indicate text that will appear on the final label in parenthesis. “/” indicates alternate language.}

	Scales, Mites including: Two Spotted Spider Mite, Pacific Red Mite, European Red Mite, Rust Mite, Leafhopper*, San Jose Scale, Rosy Apple Aphid*, Fruit Tree Leafroller*	FOLIAR SPRAY (Post Bloom): Use 1.0-4.0 tbsp. (0.5-2.0 oz) Apply every 10-14 days depending on level of pest pressure. Trees may be sprayed after harvest to maintain control and reduce over-wintering pest pressure.	
	Powdery Mildew	Use 2.5-5.0 tbsp. (1.25-2.5 oz) Apply at tight cluster and continue every 10-14 days through second cover spray. Use 5.0 tbsp. (2.5 oz) and/or shorter spray interval when disease is severe.	
AVOCADOS	Avocado Brown Mite, Persea Mite, Thrips	Use 1.5-2.5 tbsp. (0.75-1.25 oz) Apply through late fall. Spray as needed.	California: Consult with your local University of California Cooperative Extension Service for proper timing and application parameters.
BANANAS PLANTAINS	Black Leaf Streak, Black Sigatoka, Yellow Sigatoka	Use 1.5-4.0 tbsp. (0.75-2.0 oz) Begin application when disease first appears and continue every 10-15 days during rainy periods or as is needed.	Restriction: Do not apply when daytime temperatures exceed 80° F as injury may occur. Phytotoxicity may be affected by the quantity of oil used, vigor of trees and temperature at the time of application.
BLUEBERRIES BUSHBERRIES CANE BERRIES RASPBERRIES	Mites, Sawfly (eggs)*, Scales*, Aphids, Mealybug, Powdery Mildew, Rust	FOLIAR SPRAY: Use 2.0-4.0 tbsp. (1.0-2.0 oz) Spray as needed.	
FIGS	Scale	DORMANT OR DELAYED DORMANT: Use 2.5-7.5 tbsp. (1.25-3.75 oz) Spray as needed.	
	Mites, Mealybug	FOLIAR SPRAY: Use 2.5-5.0 tbsp. (1.25-2.5 oz)	
GRAPES	Mealybug, Mites, Leafhopper*, Whiteflies*	FOLIAR SPRAY: Use 2.5-7.5 tbsp. (1.25-3.75 oz) Repeat sprays every 10-14 days.	Restrictions: Oil will remove the bloom on grapes. On grapes, do not mix oil and copper more than once/season. Do not use copper and oil together with fruit present.
	Powdery Mildew	Use 2.5-7.5 tbsp. (1.25-3.75 oz) Make first application pre-bloom and continue every ten days to three weeks depending on level of disease pressure. Use 7.5 tbsp. (3.75 oz) and/or shorter spray interval when disease conditions are severe.	
	Botrytis	Use 2.5-5.0 tbsp. (1.25-2.5 oz). Initiate sprays at bloom and repeat prior to bunch closing and véraison. Final application at harvest if needed. Use 5.0 tbsp. (2.5 oz) when disease is severe.	

*Crop or pest not approved for use in California

{Note to Reviewer: Braces { } indicate information that will not be on the final label.

Brackets [] indicate optional text that may or may not be on the final label.

Parentheses () indicate text that will appear on the final label in parenthesis. “/” indicates alternate language.}

MANGO	Mites, Powdery Mildew	Use 2.5-4.0 tbsp. (1.25-2.0 oz) Apply every 2-3 weeks as necessary depending on level of pest pressure. For Powdery Mildew – Begin application before bloom. Repeat at bloom and every 2-3 weeks as necessary.	
OLIVES	Olive (Parlatoria) Scale, Oleander Scale, Black Scale	POSTBLOOM THROUGH AUGUST AND AFTER HARVEST: Use 2.5-4.0 tbsp. (1.25-2.0 oz) Spray as needed.	
	Mites	PREBLOOM TO POSTBLOOM BUCKSHOT: Use 4.0 tbsp. (2.0 oz). Spray as needed.	
PAPAYA	Mites, Powdery Mildew, Papaya Ringspot Virus	Use 2.0-4.0 tbsp. (1.0-2.0 oz) For Powdery Mildew and Mites: Spray every 10-14 days depending on the level of pest pressure. For Virus: Spray weekly. Initiate spray when seeds are germinated.	
PEARS	European Fruit Lecanium Scale, Olive Scale, San Jose Scale, European Red Mite Eggs	DORMANT: Use 2.5-5.0 tbsp. (1.25-2.5 oz) Spray as needed.	
	Pear Psylla	Apply before eggs are laid in early spring.	
	Codling Moth*	Only controls early stages of insect life cycle	
	Fruit Tree Leafroller Pear Leaf Blister Mite	DORMANT: Use 2.5-7.5 tbsp. (1.25-3.75 oz)	
	Powdery Mildew	Use 2.5-5.0 tbsp. (1.25-2.5 oz). Apply at bud burst and continue every 10-14 days. Use 5.0 tbsp. (2.5 oz) and/or shorter spray interval when disease conditions are severe.	
	Scales, Two Spotted Spider Mite, Pacific Red Mite, European Red Mite, San Jose Scale and Italian Pear Scale (Summer forms) Leafhopper*, Pear Psylla	FOLIAR SPRAY (Post Bloom): Use 1.0-4.0 tbsp. (0.5-2.0 oz) Trees may be sprayed after harvest to maintain control and reduce over-wintering inoculum.	
PECANS	Scales, Aphids (eggs), Mites (eggs)	DORMANT: Use 5.0-7.5 tbsp. (2.5-3.75 oz) Use 5.0 tbsp./gal. when trees are in a weakened condition. Apply from late February until buds first break. Re-spray as needed.	
PINEAPPLE	Mealybugs, Bud Moth, Chinese Rose Beetle	Use 2.5-5.0 tbsp. (1.25-2.5 oz). Spray as needed.	
PLUMS PRUNES	Black Scale, European Fruit Lecanium Scale, Frosted Scale, Olive Scale, San Jose Scale, Brown Mite Eggs, European Red Mite Eggs, Aphid Eggs, Fruit Tree Leafroller Eggs, Tent Caterpillars*	DORMANT AND DELAYED DORMANT: Use 2.5-7.5 tbsp. (1.25-3.75 oz) Spray as needed. Preferred times of application for European Fruit Lecanium Scale and European Red Mite Eggs are Green Tip to Delayed Dormant and for San Jose Scale are Dormant, Green Tip to Delayed Dormant.	
	Terrapin Scale	DELAYED DORMANT: Use 5.0-7.5 tbsp. (2.5-3.75 oz) Spray as needed.	

*Crop or pest not approved for use in California

{Note to Reviewer: Braces { } indicate information that will not be on the final label.

Brackets [] indicate optional text that may or may not be on the final label.

Parentheses () indicate text that will appear on the final label in parenthesis. "/" indicates alternate language.}

	Cottony Peach Scale	DORMANT: Use 5.0-7.5 tbsp. (2.5-3.75 oz) Spray as needed.	
	Two-spotted Spider Mite, Pacific Mite, European Red Mite, Brown Mite	FOLIAR SPRAY: Use 1.5-4.0 tbsp. (0.75-2.0 oz) Spray as needed. Trees may be sprayed after harvest to maintain control and reduce overwintering pressure.	Restriction: Do not apply to trees lacking moisture. Certain varieties of plums and prunes may be injured by oil sprays; check for tolerance prior to treatment.
STRAWBERRIES	Aphids*, Leafminers*, Mites, Sawfly, Scale, Whiteflies, Powdery Mildew, Botrytis	Use 2.0 tbsp. (1.0 oz) Spray as needed.	
WALNUTS	Black Scale, Calico Scale, European Fruit Lecanium Scale, Frosted Scale, Olive Scale, San Jose Scale, European Red Mite Eggs, Walnut Aphid Eggs	DELAYED DORMANT: Use 10.0-15.0 tbsp. (5.0-7.5 oz) Spray as needed.	Restrictions: Do not apply after husk split. Do not spray oil on sensitive varieties.
	Spider Mites, Soft Scales	FOLIAR: Use 10.0-15.0 tbsp. (5.0-7.5 oz) Spray as needed.	

*Crop or pest not approved for use in California

{Note to Reviewer: Braces { } indicate information that will not be on the final label.
 Brackets [] indicate optional text that may or may not be on the final label.
 Parentheses () indicate text that will appear on the final label in parenthesis. "/" indicates alternate language.}

CITRUS: (California Only)			
CROP	PESTS	TIMING & APPLICATION RATE (Tablespoons (oz) of PureSpray™ Green Formula 3 per 1 Gallon of Water)	RESTRICTIONS/COMMENTS
GRAPEFRUIT LEMONS LIMES ORANGES (Navel & Valencia) TANGELOS TANGERINES Other citrus hybrids	Mites: Citrus Bud, Citrus Flat, Citrus Red, Citrus Rust Scales: Black, Brown Soft, California Red, Citricola, Purple, Yellow, Red	<p>Central California: Use 1.5-4.0 tbsp. (0.75-2.0 oz).</p> <p>Lemons and Limes: make applications March through November. Grapefruit: make applications July through October.</p> <p>Navel Oranges: make applications July through September.</p> <p>Valencia Oranges, Tangelos, Tangerines and other citrus hybrids: make applications July through October.</p> <p>Southern California: Use 1.5-4.0 tbsp. (0.75-2.0 oz).</p> <p>Coastal Lemons and Limes: apply May and June and/or September through December.</p> <p>Interior Lemons and Limes: apply in April and May and/or September through November.</p> <p>Grapefruit: make applications July through October.</p> <p>Navel Oranges: make applications July through September.</p> <p>Valencia Oranges, Tangelos, Tangerines and other citrus hybrids: make applications July through October.</p> <p>Oxnard Plains Area: Use 1.5-4.0 tbsp. (0.75-2.0 oz). Make applications as needed throughout the year.</p> <p>Spray as needed.</p>	<p>Restriction: Do not apply prior to or during a period of excessively high temperatures. Do not apply oil spray when trees show stress.</p>

{Note to Reviewer: Braces { } indicate information that will not be on the final label.

Brackets [] indicate optional text that may or may not be on the final label.

Parentheses () indicate text that will appear on the final label in parenthesis. "/" indicates alternate language.}

CITRUS: (Florida and Texas)			
CROP	PESTS	TIMING & APPLICATION RATE (Tablespoons (oz) of PureSpray™ Green Formula 3 per 1 Gallon of Water)	RESTRICTIONS/COMMENTS
CITRONS GRAPEFRUITS LEMONS LIMES MANDARINS ORANGES TANGELOS TANGERINES Other citrus hybrids	Citrus Rust Mite, Spider Mites, Bud Mites, Flat Mites	Summer spray only. Use 1.5-4.0 tbsp. (0.75-2.0 oz).	RESTRICTIONS: Do Not Apply To Navel Oranges. Do not apply oil spray when trees are wilting. Do not apply oil and sulfur within 3 weeks of each other. Sensitive foliage may be injured. Improved control can be obtained when all foliage is thoroughly covered.
	Scales: Black Soft, Brown Soft, Chaff, Glover, Purple, Red, Yellow Does not control Citrus Snow Scale.	Re-spray as needed.	
	Whitefly, Blackfly		
	Greasy Spot (Grapefruit)		
	Greasy Spot (all other varieties)		
	Loosening sooty mold	Use 4.0 tbsp (2.0 oz) when disease pressure is heavy.	

{Note to Reviewer: Braces { } indicate information that will not be on the final label.

Brackets [] indicate optional text that may or may not be on the final label.

Parentheses () indicate text that will appear on the final label in parenthesis. "/" indicates alternate language.}

VEGETABLE CROPS			
CROP	PESTS	TIMING & APPLICATION RATE (Tablespoons (oz) of PureSpray™ Green Concentrate per 1 Gallon of Water)	RESTRICTIONS/COMMENTS
ASPARAGUS, BEANS, BEETS, BROCCOLI, BRUSSELS SPROUTS, CABBAGE, CAULIFLOWER, CHINESE CABBAGE (Bok Choy and Napa), CHINESE MUSTARD CABBAGE (Gai Choy), COLLARDS, KALE, KOHLRABI, CELERY, CHAYOTE, CHINESE WAXGOURD, CUCUMBER, GHERKIN, HYOTAN, CUCUZZA, HECHIMA, CHINESE OKRA, BALSAM APPLE, BALSAM PEAR, CANTALOUPE, CASABA, GOLDEN PERSHAW MELON, HONEYDEW MELON, HONEY BALLS, PUMPKIN, SQUASH, WATERMELON, DASHEEN (Taro)*, EGGPLANT, GINGER*, GINSENG*, HERBS AND SPICES* (Curly Leaf Basil, Lemon Balm), JAPANESE RADISH (Daikon)*, LETTUCE, OKRA*, PEPPERS, POTATOES, RADISHES, SWEET POTATOES	Aphids, Mites, Beetle Larvae, Leafminers, Thrips, Leafhopper, Whitefly Alternaria Leafspot, Gummy Stem Blight, Powdery Mildew, Rust	Use 2.0-4.0 tbsp. (1.0-2.0 oz) Spray once or twice weekly depending on the pest pressure.	
	Cucumber Mosaic Virus, Papaya Ringspot Virus, Pepper Mottle Virus, Potato Leafroll Virus, Potato Virus Y, Tobacco Etch Virus, Watermelon Mosaic Virus 2, Zucchini Yellow Mosaic Virus	Use 2.0 tbsp. (1.0 oz) Spray as needed.	
CHINESE ARTICHOKE* (Japanese Artichoke) CILANTRO* HERBS AND SPICES* (Mexican Oregano, Mint)	Aphids, Mites, Beetle Larvae, Leafminers, Thrips Leafhopper, Whitefly, Pepper Psyllids, Alternaria Leafspot, Gummy Stem Blight, Powdery Mildew, Rust, Cucumber Mosaic Virus 2, Papaya Ringspot Virus, Pepper Mottle Virus, Potato Leafroll Virus, Potato Virus Y, Tobacco Etch Virus, Watermelon Mosaic Virus 2, Zucchini Yellow Mosaic Virus	Use 2.5-5.0 tbsp. (1.25-2.5 oz) Spray once or twice weekly depending on the pest pressure.	

*Crop or pest not approved for use in California

{Note to Reviewer: Braces { } indicate information that will not be on the final label.

Brackets [] indicate optional text that may or may not be on the final label.

Parentheses () indicate text that will appear on the final label in parenthesis. "/" indicates alternate language.}

CROP	PESTS	TIMING & APPLICATION RATE (Tablespoons (oz) of PureSpray™ Green Concentrate per 1 Gallon of Water)	RESTRICTIONS/COMMENTS
CORN (Sweet)	Aphids, Mites, Leafhopper, Leafminers, Corn Earworm, Rootworm, Armyworm, Whitefly, Cercospora	Use 2.5-5.0 tbsp. (1.25-2.5 oz) Spray as needed.	
TOMATOES	Aphids, Mites, Beetle Larvae, Leafminers, Thrips, Leafhopper, Whitefly, Tomato Psyllid*, Tomato Pin Worm*, Fruit Worm*, Army Worm*, Horn Worm*, Lygus Bug*, Stink Bug* Alternaria Leafspot, Gummy Stem Blight, Powdery Mildew, Rust Cucumber Mosaic Virus, Papaya Ringspot Virus, Pepper Mottle Virus, Potato Leafroll Virus, Potato Virus Y, Tobacco Etch Virus, Watermelon Mosaic Virus 2, Zucchini Yellow Mosaic Virus	Use 2.0-4.0 tbsp. (1.0-2.0 oz) Spray once or twice weekly depending on pest pressure.	

*Crop or pest not approved for use in California

{Note to Reviewer: Braces { } indicate information that will not be on the final label.

Brackets [] indicate optional text that may or may not be on the final label.

Parentheses () indicate text that will appear on the final label in parenthesis. "/" indicates alternate language.}

ORNAMENTALS			
PLANT	PESTS	TIMING & APPLICATION RATE (Tablespoons (oz) of PureSpray™ Green Concentrate per 1 Gallon of Water)	RESTRICTIONS/COMMENTS
FLOWERING AND FOLIAGE PLANTS INCLUDING ROSES AND OTHER SHRUBS‡	Aphids, Adelgids, Eriophyid Mites, Gall Mites, Honey Locust Plant Bug, Lace Bug, Leaf Beetle Larvae, Leafminer (non-larvae), Leafrollers, Mealybugs, Psyllids (immature), Red Mites, Sawfly (larvae), Scales (immature), Spider Mites, Webworms, Whiteflies, Young Caterpillars, Blackspot, Powdery Mildew	Winter Dormant Period: Use 5.0-7.5 tbsp. (2.5-3.75 oz) Summer (Foliar or Cover): Use 2.0-5.0 tbsp. (1.0-2.5 oz) For blackspot and powdery mildew control during the summer do not exceed 4.0 tbsp. of oil per 1 gal. of water. Spray as needed.	
FOLIAGE ORNAMENTALS & BEDDING PLANTS‡	Aphids, Adelgids	Winter Dormant Period: Use 5.0-7.5 tbsp. (2.5-3.75 oz) Summer (Foliar or Cover): Use 2.0-5.0 tbsp. (1.0-2.5 oz) Spray as needed.	Application safety during bloom period must be determined for each individual species of plant by conducting a small test.
NON-FRUIT BEARING TREES‡	Mites	Use 2.5-5.0 tbsp. (1.25-2.5 oz) Apply every 10-14 days.	
– Apple, Cherry, Peach, Pear	Powdery Mildew	Use 2.5-5.0 tbsp. (1.25-2.5 oz) Spray before disease first appears. Apply every 10-14 days.	
SHADE TREES*** ORNAMENTAL TREES** SHRUBS (INCLUDING CONIFERS, DECIDUOUS AND BROADLEAF EVERGREENS & WOODY ORNAMENTALS)	Aphids, Adelgids, Hemlock Woolly Adelgids, Eriophyid Mites, Gall Mites, Honey Locust Plant Bug, Lace Bug, Leaf Beetle Larvae, Leafminer (non-larvae), Leafrollers, Mealybugs, Psyllids (immature), Red Mites, Sawfly (larvae), Scales (immature), Spider Mites, Webworms, Whiteflies, Young Caterpillars, Blackspot, Powdery Mildew	Winter Dormant Period: Use 5.0-7.5 tbsp. (2.5-3.75 oz) Summer (Foliar or Cover): Use 2.0-5.0 tbsp. (1.0-2.5 oz) For blackspot and powdery mildew control during the summer, do not exceed 5.0 tbsp. (2.5 oz). Spray as needed.	Restriction: Do not spray when there is obvious moisture deficit in leaves, or the plant is under stress. For fall dormant applications, reduce rate to 5.0 tbsp. of oil per 1 gal. of water and limit use only to: American Red Oak, Japanese Black Pine, Dogwood, Weeping Cherry, Cornelian Cherry, Crabapple, Norway Maple, Purple Plum. Restriction: Do not use on conifers or ferns not tolerant to oil sprays (e.g. Alberta Dwarf Spruce). May cause discoloration of Blue Spruce. Use enough spray solution to completely penetrate the leaf canopy, cover the leaves and stems until wet but without significant runoff.

‡Use a lower concentration for more sensitive plants.

***This product removes the glaucous (blue) bloom from such evergreens as Colorado Blue Spruce and Koster Spruce. Always use lower dosage or test spray oil sensitive plants such as Cryptomeria, Smoke Tree, Chamaecyparis, Juniper, Japanese Holly and Spruce. Tendency toward sensitivity: Red Cedar and Douglas Fir.

{Note to Reviewer: Braces { } indicate information that will not be on the final label.

Brackets [] indicate optional text that may or may not be on the final label.

Parentheses () indicate text that will appear on the final label in parenthesis. "/" indicates alternate language.}

INDOORS			
GREENHOUSE AND HOUSE PLANTS			
Frequency of Application: For each greenhouse pest listed, use once a week initially, then as the pest is controlled, decrease the frequency to every 2-3 weeks as needed. Application safety during bloom period must be determined for each individual species of plant to be treated by conducting a small test.			
PLANT	PESTS	TIMING & APPLICATION RATE (Tablespoons (oz) of PureSpray™ Green Concentrate per 1 Gallon of Water)	RESTRICTIONS/COMMENTS
AGERATUM CROWN OF THORNS DIEFFENBACHIA DOGWOOD* DRACAENA* FERNS FICUS HOLLY* LISIANTHUS MAGNOLIA* ORCHID PALMS PETUNIA POINSETTIA SCHEFFLERA SUNFLOWER	Aphids, Fungus Gnats, Leafminers, Mealybugs, Scales (soft & hard), Spider Mites, Thrips, Whitefly, Powdery Mildew*	Summer (Foliar or Cover): Use 1.5-2.5 tbsp. (0.75-1.25 oz) Spray as needed.	Due to varietal differences in response to a treatment of this product at the labeled rate, conduct a small test on 1 or 2 plants of the specific variety to be treated. Some plants are more sensitive to oil treatments if any of the following conditions are present when application is made: High humidity (74%), an overcast or cloudy day, inadequate air flow, a small greenhouse where the sunlight is magnified causing a fast build-up of temperature and light intensity.
AGLAONEMA ASTER AZALEAS BEGONIAS BROWALLIA CAMELLIAS CARNATION CELOSIA CHRYSANTHEMUM COLEUS COSMOS CREPE MYRTLE* DUSTY MILLER EASTER LILIES FUCHSIA* GARDENIAS GERBERA HELLICHRYSUM HIBISCUS FOLIAGE HYDRANGEA IMPATIENS* JADE PLANT MARIGOLD NEW GUINEA IMPATIENS NICOTONIA PHILODENDRON PORTULACA REIGER BEGONIAS SNAPDRAGON ZINNIAS	Aphids, Fungus Gnats, Leafminers, Mealybugs, Scales (soft & hard), Spider Mites, Thrips, Whitefly, Powdery Mildew*	Summer (Foliar or Cover): Use 2.5-5.0 tbsp. (1.25-2.5 oz) Spray as needed.	
LEAF POLISH FOR HARDY PLANTS		Use 2.5 tbsp. (1.25 oz)	

*Crop or pest not approved for use in California

{Note to Reviewer: Braces { } indicate information that will not be on the final label.
Brackets [] indicate optional text that may or may not be on the final label.
Parentheses () indicate text that will appear on the final label in parenthesis. "/" indicates alternate language.}

STORAGE AND DISPOSAL

Do not contaminate water, food, or feed by storage or disposal. Open dumping is prohibited.

Pesticide Storage: Keep container tightly closed in storage to prevent entry of water or other contaminants. Store in a cool, dry locked area out of the reach of children or pets. Do not store this product in direct sunlight for prolonged periods of time. Do not freeze. This product must be stored in its original container only. Do not put concentrate or dilute product into food or drink containers.

Pesticide Disposal: Call your local solid waste agency for disposal instructions. Never place unused product down any indoor or outdoor drain.

Container Handling: Non-refillable container. Do not reuse or refill this container. Offer for recycling if available. If recycling is not available, place empty container in trash.

{Note to EPA: Optional language for containers greater than 5 gallons}

Containers greater than 5 gallons: Non-refillable container. Do not reuse or refill this container. Offer for recycling, if available. Triple rinse (or equivalent) container promptly after emptying.

Triple rinse as follows: Empty the remaining contents into application equipment or a mix tank. Fill the container ¼ full with water. Replace and tighten closures. Tip container on its side and roll it back and forth, ensuring at least one complete revolution, for 30 seconds. Stand the container on its end and tip it back and forth several times. Turn the container over onto its other end and tip it back and forth several times. Empty the rinsate into application equipment or a mix tank or store rinsate for later use or disposal. Repeat this procedure two more times.

Then offer for recycling if available or reconditioning if appropriate or puncture and dispose of in a sanitary landfill or by other procedures approved by state and local authorities.

CONDITIONS OF SALE AND LIMITATIONS OF WARRANTY AND LIABILITY

It is impossible to eliminate all risks inherently associated with the use of this product. Crop injury, ineffectiveness, or other unintended consequences may result because of such factors as weather conditions, presence of other materials, or the manner of use or application, all of which are beyond the control of Intelligro, the manufacturer or seller. All such risks shall be assumed by the buyer.

To the extent consistent with applicable law neither Intelligro, the manufacturer or seller shall be liable for consequential, special or indirect damages resulting from the use or handling of this product. Except as provided by applicable law or except as warranted by this label, Intelligro, the manufacturer or seller makes no warranties, guarantees, or representations of any kind, either express or implied, or by usage of trade statutory or otherwise, with regard to the product sold, including, but not limited to, merchantability, fitness for a particular purpose, use or eligibility of the product for any particular trade usage. Except as provided by applicable law, buyer's or user's exclusive remedy, and Intelligro's, the manufacturer's or seller's total liability, shall be for damages not exceeding the cost of the product.

{Note to Reviewer: Braces { } indicate information that will not be on the final label.
Brackets [] indicate optional text that may or may not be on the final label.
Parentheses () indicate text that will appear on the final label in parenthesis. "/" indicates alternate language.}

{Sub-label B: Hose-End Sprayer}

{front panel located on front of container and booklet affixed to back of container}

PURESPRAY™ GREEN FORMULA 3

FOR RESIDENTIAL USE ONLY

ACTIVE INGREDIENT:	BY WEIGHT
Mineral Oil*:	98.00%
Inert Ingredients:.....	<u>2.00%</u>
Total:	100.00%
Unsulfonated Residue of the Oil.....	99.00%
	(Minimum)
Aromatic Composition by ASTM D2140	0.00%

*Contains Petroleum Distillates

**KEEP OUT OF REACH OF CHILDREN
CAUTION**

See below/back panel/side panel/inside/booklet for additional precautionary statements.

NET CONTENTS: _____

{Note to EPA: BATCH CODE WILL APPEAR ON IMMEDIATE CONTAINER}

{booklet}

MADE IN CANADA (MAY CONTAIN IMPORTED PARTS) FOR:

**Intelligro
2310 Lakeshore Road West
Mississauga, Ontario L5J 1K2
Canada
1-844-388-2665**

™ Trademark of Suncor Energy Inc. Used under license.

Patent(s):www.suncor.com/patents

EPA REG NO. 69526-14

EPA EST. NO.

{OMRI Seal graphic}

{Note to Reviewer: Braces { } indicate information that will not be on the final label.
 Brackets [] indicate optional text that may or may not be on the final label.
 Parentheses () indicate text that will appear on the final label in parenthesis. "/" indicates alternate language.}

READ THIS ENTIRE LABEL BEFORE USING THIS PRODUCT.

FIRST AID	
Have the product container or label with you when calling a poison control center or doctor or going for treatment.	
If swallowed	<ul style="list-style-type: none"> • Immediately call a poison control center or doctor for treatment advice. • Do not induce vomiting unless told to by a poison control center or doctor. • Do not give any liquid to the person. • Do not give anything by mouth to an unconscious person.
If on skin or clothing:	<ul style="list-style-type: none"> • Take off contaminated clothing. • Rinse skin immediately with plenty of water for 15-20 minutes. • Call a poison control center or doctor for treatment advice.
If in eyes:	<ul style="list-style-type: none"> • Hold eye open and rinse slowly and gently for 15-20 minutes. • Remove contact lenses, if present, after the first 5 minutes, then continue rinsing eye. • Call a poison control center or doctor for treatment advice.
FOR A MEDICAL EMERGENCY INVOLVING THIS PRODUCT CALL: <i>Intelligro</i>: 1-844-388-2665, CANUTEC TRANSPORTATION: 613-996-6666, OR a U.S. POISON CONTROL CENTER at 1-800-222-1222.	
NOTE TO PHYSICIAN: Contains Petroleum distillate. Do not induce vomiting since vomiting may induce aspiration pneumonia.	

PRECAUTIONARY STATEMENTS

HAZARDS TO HUMANS AND DOMESTIC ANIMALS

CAUTION: Harmful if swallowed or absorbed through the skin. Causes moderate eye irritation. Prolonged or frequently repeated skin contact may cause allergic reaction in some individuals. This product is a potential skin sensitizer. Avoid contact with eyes, skin or clothing. Wash hands thoroughly with soap and water after handling, before eating, drinking, chewing gum, using tobacco or using the toilet. Remove contaminated clothing and wash clothing before reuse. Wear gloves made of any water-proof material and shoes plus socks. Wash clothing before reuse using detergent and hot water.

ENVIRONMENTAL HAZARDS

This product is toxic to aquatic invertebrates. Do not apply directly to water, or to areas where surface water is present, or to intertidal areas below the mean highwater mark. Do not contaminate water when disposing of equipment wash water or rinsate. Drift and runoff may be hazardous to aquatic organisms in water adjacent to treated areas. Avoid drift or run off into storm drains, drainage ditches,

{Note to Reviewer: Braces { } indicate information that will not be on the final label.
Brackets [] indicate optional text that may or may not be on the final label.
Parentheses () indicate text that will appear on the final label in parenthesis. "/" indicates alternate language.}

or surface waters. Applying this product in calm weather when rain is not predicted for the next 24 hours will help to maximize the chances that wind, or rain will not blow or wash pesticide off the treatment area. Rinsing application equipment over the treated area will help avoid run off to water bodies or drainage systems.

DIRECTIONS FOR USE

It is a violation of Federal law to use this product in a manner inconsistent with its labeling.

USE RESTRICTIONS

- Do not enter or allow others to enter treated areas until sprays have dried.
- This hose-end sprayer may only be used with PureSpray™ Green Formula 3 or to spray only water. Use of this sprayer with other pesticides may lead to plant damage due to product incompatibility.
- Do not use this product indoors.
- Do not apply this product more often than this label specifies.
- Do not spray wet plants.
- Do not apply this product when the temperature is above 90°F or below 40°F.
- Do not apply this product during periods of prolonged high temperature combined with high humidity. Horticultural oils interfere with or slow plant transpiration and respiration during the period of evaporation.
- Do not spray plants that are under stress from drought or disease.
- Do not apply this product to oil-sensitive plant varieties.
- Do not mix this product with sulfur or sulfur-containing products.
- On Grapes, do not apply sulfur within 10 days before or after use of this product. On other crops, do not apply sulfur within 14 days before or after use of this product.

USE PRECAUTIONS

- Certain plant species may be sensitive to oil. Test-spray 1 to 3 plants and observe their responses to treatment for several days before general spraying.
- Use caution when spraying open blooms. Bleaching and spotting of open blooms have been observed.
- The effectiveness of this product may be reduced if prolonged temperatures below 50° F are experienced due to the reduced respiration rate of insects at such temperatures.
- Protect painted surfaces, carpets, and furnishings from overspray. This product may cause discoloration.

APPLICATION INSTRUCTIONS

This hose end sprayer must only be used with **PureSpray™ Green Concentrate** . Use of this sprayer with other pesticides may lead to plant damage due to product incompatibility.

{Note to Reviewer: Braces { } indicate information that will not be on the final label.

Brackets [] indicate optional text that may or may not be on the final label.

Parentheses () indicate text that will appear on the final label in parenthesis. "/" indicates alternate language.}

- This product should be applied in the early evening or the early morning.
- Begin application when the pest is present and re-apply every 7 to 21 days, or at the interval that this label specifies for the type of plant being treated.
- Due to the force of the spray stream, use care when spraying delicate plants.
- The targeted plant and pest must be completely covered by the spray solution for it to be effective. Spray until plant is thoroughly covered on both upper and lower leaf surfaces, and spray solution begins to run off of plant. Do not re-apply this product during a single application. Once runoff has occurred, do not come back and re-spray the plant.
- This product may be applied up to the day of harvest, except for Table Grapes.
- Do not use the spray attachment if it is chipped, bent, or damaged in any way.

OPERATING THE HOSE-END PRAYER:

1. Shake the container well before using this concentrate product.
2. Make sure that the control lever located on the side of the hose-end sprayer is in the OFF position. If the sprayer is not in the OFF position, bend the safety tab down to the right and turn the control lever to the OFF position.
3. Once the control lever is in the OFF position, attach the hose-end sprayer to the water hose.
4. Turn on the water supply.
5. Direct the spray nozzle toward the targeted plants and pests.
6. Turn the control lever to the ON position. To do this, bend the safety tab down to the right and turn the control lever until it lines up with the word ON.
7. When spraying is complete, turn the control lever to the OFF position, as directed in step 2.
8. Turn Off water supply.
9. Turn control lever to WATER and then OFF to rinse the hose-end sprayer and release water pressure before disconnecting the sprayer from the hose.
10. If the bottle is empty, discard it according to the instructions for container disposal on the back panel of the label. If bottle is not empty, cap and retain it for future use, or dispose of it as specified on the container label. See requirements for **STORAGE AND DISPOSAL**.
11. The hose-end sprayer and dip-tube may be cleaned and retained for future use with another **PureSpray™ Green Formula 3** purchase. Except when used only to spray only water, this hose-end attachment may only be used to apply **PureSpray™ Green Formula 3**.

NOTE: This sprayer may be used to just spray water. To spray only water, follow steps 1-5 and then turn the control lever to the WATER position. Once watering has been completed, continue with steps 7-11. PureSpray™ Green Formula 3 will not be expelled when the control lever is in the WATER position. The water-spray option permits the user to water plants that are not currently being sprayed with the PureSpray™ Green Formula 3 product for pest control.

All Season Horticultural Spray:

DORMANT STAGE: Before buds reveal the green tissue.

DELAYED DORMANT STAGE: When the leaves of the blossom buds are out $\frac{1}{4}$ to $\frac{1}{2}$ inch.

GROWING SEASON: Period during which plants and crops may be grown.

GREEN TIP STAGE: When leaves of blossom buds are bursting: show about $\frac{1}{8}$ to $\frac{1}{4}$ inch of green color.

FOLIAR SPRAY: When leaves are open and actively growing.

{Note to Reviewer: Braces { } indicate information that will not be on the final label.

Brackets [] indicate optional text that may or may not be on the final label.

Parentheses () indicate text that will appear on the final label in parenthesis. "/" indicates alternate language.}

OUTDOORS		
FRUIT AND NUT CROPS		
CROP	PESTS	RESTRICTIONS/COMMENTS
ALMONDS APRICOTS CERRIES NECTARINES PEACHES PISTACHIO	Powdery Mildew (Cherries, Nectarines and Peaches only)	Cherries: Spray as needed Nectarines/Peaches: Restriction: Do not apply to oil sensitive varieties. Begin at bloom and continue at 10-14 day intervals until terminal growth phase stops.
	Scales, Two-spotted Spider Mite, Pacific Mite, European Red Mite, Brown Mite	Spray as needed.
APPLES	Scales, Mites, Two Spotted Spider Mite, Pacific Red Mite, European Red Mite, Rust Mite, Leafhopper*, San Jose Scale, Rosy Apple Aphid*, Fruit Tree Leafroller*	FOLIAR SPRAY (Post Bloom) Apply every 10-14 days depending on level of pest pressure. Trees may be sprayed after harvest to maintain control and reduce over-wintering pest pressure.
	Powdery Mildew	
AVOCADOS	Avocado Brown Mite, Persea Mite Thrips	Apply through late fall. Spray as needed.
BANANAS PLANTAINS	Black Leaf Streak Black Sigatoka Yellow Sigatoka	Restriction: Do not apply when daytime temperatures exceed 80° F as injury may occur. Phytotoxicity may be affected by the vigor of plants and temperature at the time of application.
BLUEBERRIES BUSHBERRIES CANEERRIES RASPBERRIES	Mites, Sawfly (eggs)*, Scales* , Aphids, Mealybug, Powdery Mildew, Rust	Spray as needed.
FIGS	Mites, Mealybug	

*Crop or pest not approved for use in California

{Note to Reviewer: Braces { } indicate information that will not be on the final label.

Brackets [] indicate optional text that may or may not be on the final label.

Parentheses () indicate text that will appear on the final label in parenthesis. "/" indicates alternate language.}

GRAPES	Mealybug, Mites, Leafhopper*, Whiteflies* Powdery Mildew Botrytis	Oil will remove the bloom on grapes. On grapes, do not mix oil and copper more than once/season Restriction: Do not use copper and oil together with fruit present. For Powdery Mildew: Make 1 st application prebloom and continue every 10 to 21 days. For Botrytis: Initiate treatments at bloom and repeat prior to bunch closing and veraison
MANGO	Mites, Powdery Mildew	
OLIVES	Olive (Parlatoria) Scale, Oleander Scale, Black Scale Mites	Spray as needed.
PAPAYA	Mites, Powdery Mildew, Papaya Ringspot Virus	
PEARS	Pear Psylla Codling Moth* Powdery Mildew Scales, Two Spotted Spider Mite, Pacific Red Mite, European Red Mite, San Jose Scale and Italian Pear Scale (Summer forms) Leafhopper*, Pear Psylla	FOLIAR SPRAY (Post Bloom): Trees may be sprayed after harvest to maintain control and reduce over-wintering inoculum.
PINEAPPLE	Mealybugs, Bud Moth, Chinese Rose Beetle	
PLUMS PRUNES	Two-spotted Spider Mite, Pacific Mite, European Red Mite, Brown Mite	Spray as needed. Trees may be sprayed after harvest to maintain control and reduce over-wintering pressure. Restrictions: Do not apply to trees lacking moisture. Certain varieties of plums and prunes may be injured by oil sprays; check for tolerance prior to treatment.

*Crop or pest not approved for use in California

{Note to Reviewer: Braces { } indicate information that will not be on the final label.
 Brackets [] indicate optional text that may or may not be on the final label.
 Parentheses () indicate text that will appear on the final label in parenthesis. "/" indicates alternate language.}

CITRUS: (California Only)

CROP	PESTS	RESTRICTIONS/COMMENTS
GRAPEFRUIT LEMONS LIMES ORANGES (Navel & Valencia) TANGELOS TANGERINES Other citrus hybrids	Mites: Citrus Bud, Citrus Flat, Citrus Red, Citrus Rust Scales: Black, Brown Soft, California Red, Citricola, Purple, Yellow, Red	<p>Central California: Lemons and Limes: make applications March through November. Grapefruit: make applications July through October. Navel Oranges: make applications July through September. Valencia Oranges, Tangelos, Tangerines and other citrus hybrids: make applications July through October.</p> <p>Southern California: Coastal Lemons and Limes: apply May and June and/or September through December. Interior Lemons and Limes: apply in April and May and/or September through November. Grapefruit: make applications July through October. Navel Oranges: make applications July through September. Valencia Oranges, Tangelos, Tangerines and other citrus hybrids: make applications July through October.</p> <p>Oxnard Plains Area: Use 1.5-4.0 tbsp. (0.75-2.0 oz). Make applications as needed throughout the year.</p> <p>Spray as needed. Restriction: Do not apply prior to or during a period of excessively high temperatures. Do not apply oil spray when trees show stress.</p>

CITRUS: (Florida and Texas)

CROP	PESTS	RESTRICTIONS/COMMENTS
CITRONS GRAPEFRUITS LEMONS LIMES MANDARINS ORANGES TANGELOS TANGERINES Other citrus hybrids	Citrus Rust Mite, Spider Mites, Bud Mites, Flat Mites Scales: Black Soft, Brown Soft, Chaff, Glover, Purple, Red, Yellow Whitefly, Blackfly Greasy Spot Loosening sooty mold	<p>RESTRICTION: Do Not Apply To Navel Oranges.</p> <p>Does not control Citrus Snow Scale. Re-spray as needed.</p>

{Note to Reviewer: Braces { } indicate information that will not be on the final label.

Brackets [] indicate optional text that may or may not be on the final label.

Parentheses () indicate text that will appear on the final label in parenthesis. "/" indicates alternate language.}

VEGETABLE CROPS		
CROP	PESTS	RESTRICTIONS/COMMENTS
ASPARAGUS, BEANS, BEETS, BROCCOLI, BRUSSELS SPROUTS, CABBAGE, CAULIFLOWER, CHINESE CABBAGE (Bok Choy and Napa), CHINESE MUSTARD CABBAGE (Gai Choy), COLLARDS, KALE, KOHLRABI, CELERY, CHAYOTE, CHINESE WAXGOURD, CUCUMBER, GHERKIN, HYOTAN, CUCUZZA, HECHIMA, CHINESE OKRA, BALSAM APPLE, BALSAM PEAR, , CANTALOUPE, CASABA, GOLDEN PERSHAW MELON, HONEYDEW MELON, HONEY BALLS, PUMPKIN, SQUASH, WATERMELON, DASHEEN (Taro)*, EGGPLANT, GINGER*, GINSENG*, HERBS AND SPICES* (Curly Leaf Basil, Lemon Balm), JAPANESE RADISH (Daikon)*, LETTUCE, OKRA*, PEPPERS, POTATOES, RADISHES, SWEET POTATOES	<p>Aphids, Mites, Beetle Larvae, Leafminers, Thrips, Leafhopper, Whitefly</p> <p>Alternaria Leafspot, Gummy Stem Blight, Powdery Mildew, Rust</p>	<p>Spray once or twice weekly depending on the pest pressure</p>
CHINESE ARTICHOKE* (Japanese Artichoke) CILANTRO* HERBS AND SPICES* (Mexican Oregano, Mint)	<p>Aphids, Mites, Beetle Larvae, Leafminers, Thrips Leafhopper, Whitefly, Pepper Psyllids, Alternaria Leafspot, Gummy Stem Blight, Powdery Mildew, Rust</p> <p>Cucumber Mosaic Virus, Papaya Ringspot Virus, Pepper Mottle Virus, Potato Leafroll Virus, Potato Virus Y, tobacco Etch Virus, Watermelon Mosaic Virus 2, Zucchini Yellow Mosaic Virus</p>	<p>Spray once or twice weekly depending on the pest pressure.</p>
CORN (Sweet)	<p>Aphids, Mites, Leafhopper, Leafminers, Corn Earworm, Rootworm, Armyworm, Whitefly, Cercospora</p>	
TOMATOES	<p>Aphids, Mites, Beetle Larvae, Leafminers, Thrips, Leafhopper, Whitefly, Tomato Psyllid*, Tomato Pin Worm*, Fruit Worm*, Army Worm*, Horn Worm*, Lygus Bug*, Stink Bug*</p> <p>Alternaria Leafspot, Gummy Stem Blight, Powdery Mildew, Rust</p> <p>Cucumber Mosaic Virus, Papaya Ringspot Virus, Pepper Mottle Virus, Potato Leafroll Virus, Potato Virus Y, Tobacco Etch Virus, Watermelon Mosaic Virus 2, Zucchini Yellow Mosaic Virus</p>	<p>Spray once or twice weekly depending on pest pressure.</p>

*Crop or pest not approved for use in California

{Note to Reviewer: Braces { } indicate information that will not be on the final label.

Brackets [] indicate optional text that may or may not be on the final label.

Parentheses () indicate text that will appear on the final label in parenthesis. "/" indicates alternate language.}

ORNAMENTALS		
PLANT	PESTS	RESTRICTIONS/COMMENTS
FLOWERING AND FOLIAGE PLANTS INCLUDING ROSES AND OTHER FLOWERING SHRUBS†	Aphids, Adelgids, Eriophyid Mites, Gall Mites, Honey Locust Plant Bug, Lace Bug, Leaf Beetle Larvae, Leafminer (non-larvae), Leafrollers, Mealybugs, Psyllids (immature), Red Mites, Sawfly (larvae), Scales (immature), Spider Mites, Webworms, Whiteflies, Young Caterpillars, Blackspot Powdery Mildew	Spray as needed.
FOLIAGE ORNAMENTALS & BEDDING PLANTS†	Aphids, Adelgids	Spray as needed.
NON-FRUIT BEARING TREES† – Apple, Cherry, Peach, Pear	Mites	Apply every 10-14 days.
	Powdery Mildew	Spray before disease first appears. Apply every 10-14 days.
SHADE TREES††† ORNAMENTAL TREES** SHRUBS (INCLUDING CONIFERS, DECIDUOUS AND BROADLEAF EVERGREENS & WOODY ORNAMENTALS)	Aphids, Adelgids, Hemlock Woolly Adelgids, Eriophyid Mites, Gall Mites, Honey Locust Plant Bug, Lace Bug, Leaf Beetle Larvae, Leafminer (non-larvae), Leafrollers, Mealybugs, Psyllids (immature), Red Mites, Sawfly (larvae), Scales (immature), Spider Mites, Webworms, Whiteflies, Young Caterpillars, Blackspot, Powdery Mildew	Spray as needed.

†Use a lower concentration for more sensitive plants.

**This product removes the glaucous (blue) bloom from such evergreens as Colorado Blue Spruce and Koster Spruce. Always use lower dosage or test spray oil sensitive plants such as Cryptomeria, Smoke Tree, Chamaecypris, Juniper, Japanese Holly and Spruce.

Tendency toward sensitivity: Red Cedar and Douglas Fir.

{Note to Reviewer: Braces { } indicate information that will not be on the final label.
Brackets [] indicate optional text that may or may not be on the final label.
Parentheses () indicate text that will appear on the final label in parenthesis. "/" indicates alternate language.}

STORAGE AND DISPOSAL

Do not contaminate water, food, or feed by storage or disposal. Open dumping is prohibited.

Pesticide Storage: Keep container tightly closed in storage to prevent entry of water or other contaminants. Store in a cool, dry locked area out of the reach of children or pets. Do not store this product in direct sunlight for prolonged periods of time. Do not freeze. This product must be stored in its original container only. Do not put concentrate or dilute product into food or drink containers.

Pesticide Disposal: Call your local solid waste agency for disposal instructions. Never place unused product down any indoor or outdoor drain.

Container Handling: Non-refillable container. Do not reuse or refill this container. Offer for recycling, if available. If recycling is not available, place empty container in trash.

{Note to EPA: Optional language for containers greater than 5 gallons}

Containers greater than 5 gallons:

Non-refillable container. Do not reuse or refill this container. Offer for recycling, if available. Triple rinse (or equivalent) container promptly after emptying.

Triple rinse as follows: Empty the remaining contents into application equipment or a mix tank. Fill the container ¼ full with water. Replace and tighten closures. Tip container on its side and roll it back and forth, ensuring at least one complete revolution, for 30 seconds. Stand the container on its end and tip it back and forth several times. Turn the container over onto its other end and tip it back and forth several times. Empty the rinsate into application equipment or a mix tank or store rinsate for later use or disposal. Repeat this procedure two more times. Then offer for recycling if available or reconditioning if appropriate or puncture and dispose of in a sanitary landfill or by other procedures approved by state and local authorities.

CONDITIONS OF SALE AND LIMITATIONS OF WARRANTY AND LIABILITY

It is impossible to eliminate all risks inherently associated with the use of this product. Crop injury, ineffectiveness, or other unintended consequences may result because of such factors as weather conditions, presence of other materials, or the manner of use or application, all of which are beyond the control of Intelligro, the manufacturer or seller. All such risks shall be assumed by the buyer.

To the extent consistent with applicable law neither Intelligro, the manufacturer or seller shall be liable for consequential, special or indirect damages resulting from the use or handling of this product. Except as provided by applicable law or except as warranted by this label, Intelligro, the manufacturer or seller makes no warranties, guarantees, or representations of any kind, either express or implied, or by usage of trade statutory or otherwise, with regard to the product sold, including, but not limited to, merchantability, fitness for a particular purpose, use or eligibility of the product for any particular trade usage. Except as provided by applicable law, buyer's or user's exclusive remedy, and Intelligro's, the manufacturer's or seller's total liability, shall be for damages not exceeding the cost of the product.

{Note to Reviewer: Braces { } indicate information that will not be on the final label.
Brackets [] indicate optional text that may or may not be on the final label.
Parentheses () indicate text that will appear on the final label in parenthesis. "/" indicates alternate language.}

{Base Panel affixed below booklet for all sub-labels}

PURESPRAY™ GREEN FORMULA 3

ACTIVE INGREDIENT:	BY WEIGHT
Mineral Oil*:	98.00%
Inert Ingredients:.....	<u>2.00%</u>
Total:	100.00%
Unsulfonated Residue of the Oil.....	99.00%
	(Minimum)
Aromatic Composition by ASTM D2140	0.00%

*Contains Petroleum Distillates

**KEEP OUT OF REACH OF CHILDREN
CAUTION**

**See below/back panel/side panel/inside/booklet for DIRECTIONS FOR USE and additional
precautionary statements.**

MADE IN CANADA (MAY CONTAIN IMPORTED PARTS) FOR:

**Intelligro
2310 Lakeshore Road West
Mississauga, Ontario L5J 1K2
Canada
1-844-388-2665**

™ Trademark of Suncor Energy Inc. Used under license.

Patent(s):www.suncor.com/patents

EPA REG NO. 69526-14

EPA EST. NO. 79693-CAN-001

{OMRI Seal graphic}

NET CONTENTS: _____

{Note to Reviewer: Braces { } indicate information that will not be on the final label.
 Brackets [] indicate optional text that may or may not be on the final label.
 Parentheses () indicate text that will appear on the final label in parenthesis. "/" indicates alternate language.}

FIRST AID	
Have the product container or label with you when calling a poison control center or doctor or going for treatment.	
If swallowed	<ul style="list-style-type: none"> • Immediately call a poison control center or doctor for treatment advice. • Do not induce vomiting unless told to by a poison control center or doctor. • Do not give any liquid to the person. • Do not give anything by mouth to an unconscious person.
If on skin or clothing:	<ul style="list-style-type: none"> • Take off contaminated clothing. • Rinse skin immediately with plenty of water for 15-20 minutes. • Call a poison control center or doctor for treatment advice.
If in eyes:	<ul style="list-style-type: none"> • Hold eye open and rinse slowly and gently for 15-20 minutes. • Remove contact lenses, if present, after the first 5 minutes, then continue rinsing eye. • Call a poison control center or doctor for treatment advice.
FOR A MEDICAL EMERGENCY INVOLVING THIS PRODUCT CALL: Intelligro: 1-844-388-2665, CANUTEC TRANSPORTATION: 613-996-6666, OR a U.S. POISON CONTROL CENTER at 1-800-222-1222.	
NOTE TO PHYSICIAN: Contains Petroleum distillate. Do not induce vomiting since vomiting may induce aspiration pneumonia.	

PRECAUTIONARY STATEMENTS

HAZARDS TO HUMANS AND DOMESTIC ANIMALS

CAUTION: Harmful if swallowed or absorbed through the skin. Causes moderate eye irritation. Prolonged or frequently repeated skin contact may cause allergic reaction in some individuals. This product is a potential skin sensitizer. Avoid contact with eyes, skin or clothing. Wash hands thoroughly with soap and water after handling, before eating, drinking, chewing gum, using tobacco or using the toilet. Remove contaminated clothing and wash clothing before reuse. Wear gloves made of any water-proof material and shoes plus socks. Wash clothing before reuse using detergent and hot water.

ENVIRONMENTAL HAZARDS

This product is toxic aquatic invertebrates. Do not apply directly to water, or to areas where surface water is present, or to intertidal areas below the mean highwater mark. Do not contaminate water when disposing of equipment wash water or rinsate. Drift and runoff may be hazardous to aquatic organisms in water adjacent to treated areas. Avoid drift or run off into storm drains, drainage ditches, or surface waters. Applying this product in calm weather when rain is not predicted for the next 24 hours will help to maximize the chances that wind, or rain will not blow or wash pesticide off the treatment area. Rinsing application equipment over the treated area will help avoid run off to water bodies or drainage systems.

{Note: Environmental Hazards statements included in back panel as space permits.}

{Note to Reviewer: Braces { } indicate information that will not be on the final label.

Brackets [] indicate optional text that may or may not be on the final label.

Parentheses () indicate text that will appear on the final label in parenthesis. "/" indicates alternate language.}

STORAGE AND DISPOSAL

Do not contaminate water, food, or feed by storage or disposal. Open dumping is prohibited.

Pesticide Storage: Keep container tightly closed in storage to prevent entry of water or other contaminants. Store in a cool, dry locked area out of the reach of children or pets. Do not store this product in direct sunlight for prolonged periods of time. Do not freeze. This product must be stored in its original container only. Do not put concentrate or dilute product into food or drink containers.

Pesticide Disposal: Call your local solid waste agency for disposal instructions. Never place unused product down any indoor or outdoor drain.

Container Handling: Non-refillable container. Do not reuse or refill this container. Offer for recycling, if available. If recycling is not available, place empty container in trash.

{Note to EPA: Optional language for containers greater than 5 gallons}

Containers greater than 5 gallons:

Non-refillable container. Do not reuse or refill this container. Offer for recycling, if available. Triple rinse (or equivalent) container promptly after emptying. Triple rinse as follows: Empty the remaining contents into application equipment or a mix tank. Fill the container $\frac{1}{4}$ full with water. Replace and tighten closures. Tip container on its side and roll it back and forth, ensuring at least one complete revolution, for 30 seconds. Stand the container on its end and tip it back and forth several times. Turn the container over onto its other end and tip it back and forth several times. Empty the rinsate into application equipment or a mix tank or store rinsate for later use or disposal. Repeat this procedure two more times. Then offer for recycling if available or reconditioning if appropriate or puncture and dispose of in a sanitary landfill or by other procedures approved by state and local authorities.

{Note to Reviewer: Braces { } indicate information that will not be on the final label.

Brackets [] indicate optional text that may or may not be on the final label.

Parentheses () indicate text that will appear on the final label in parenthesis. "/" indicates alternate language.}

{OPTIONAL LABEL STATEMENTS: Following are optional marketing statements and illustrations that may appear on front panel; booklet attached to back of container, or back, side or base panel.}

- For Organic Gardening
- For use on: Flowers, Garden Vegetables, Herbs and Fruit Trees (as listed on the label)
- Kills the types of insects, diseases and mites listed on this label.
- Indoor and Outdoor Residential Application ***{For Sub-label A}***
- Indoor and Outdoor application to the types of fruits, vegetables, and flowers listed on this label ***{For Sub-label A}***
- Kills insects, diseases and mites year-round
- For year-round application.^ Apply right until harvest (except for table grapes).
^Do not apply this product when the temperature is below 40° F or above 90° F ***{Notation will appear in close proximity to/under the claim.}***
- For use on: Flowers, Garden Vegetables and/& Herbs, Fruit Trees (as listed on the label)
- For use on: flowers, garden vegetables, herbs and fruit trees as listed on the label.
- ALL SEASON HORTICULTURAL SPRAY OIL ^
^Do not apply this product when the temperature is below 40° F or above 90° F ***{Notation will appear in close proximity to/under the claim.}***
- For year-round application^
^Do not apply this product when the temperature is below 40° F or above 90° F ***{Notation will appear in close proximity to/under the claim.}***
- Apply right until harvest (except for table grapes)
- Controls the types of insects, mites and disease listed on this label.
- For Use On: Landscape Trees and Plants, Shrubs and Flowering Plants, Houseplants, Fruit and Nut Trees, Shade Trees, Garden Vegetables and/& Herbs, Ornamentals, Flowers, Evergreens, Home Greenhouse Plants, and Container Gardens (as listed on this label)
- Apply right up until harvest, except for table grapes.
- Can be applied up to harvest for most crops listed.†
†Does not include Table Grapes. ***{Notation will appear in close proximity to/under the claim.}***
- Active ingredient contains less than 1% sulphonated residue
- For year-round control of the insects, mites, and diseases listed on this label^
^Do not apply this product when the temperature is below 40° F or above 90° F ***{Notation will appear in close proximity to/under the claim.}***
- For dormant and growing season applications^
^ Do not apply this product when the temperature is below 40° F or above 90° F ***{Notation will appear in close proximity to/under the claim.}***

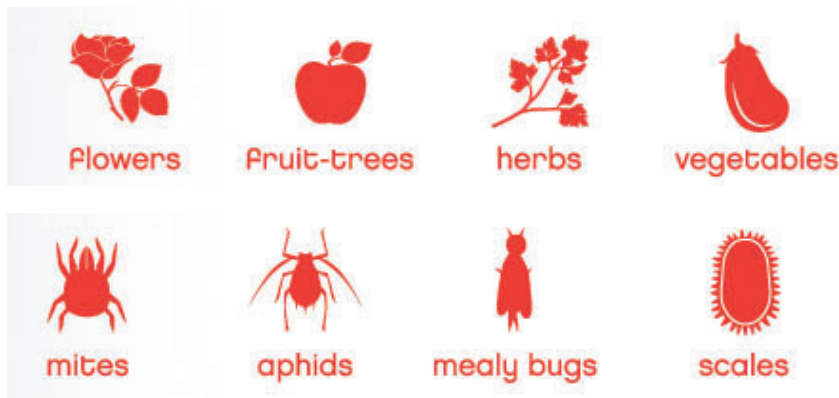
{Note to Reviewer: Braces { } indicate information that will not be on the final label.

Brackets [] indicate optional text that may or may not be on the final label.

Parentheses () indicate text that will appear on the final label in parenthesis. “/” indicates alternate language.}

- Kills insects through suffocation.
- Kills insects through non-toxic process.
- Insects do not develop resistance.
- No risk of insects developing resistance.
- Controls all life stages, including eggs, of the insects listed on this label.
- One gallon **PureSpray™ Green Formula 3** makes up to 100 gallons diluted or finished spray
- One quart **PureSpray™ Green Formula 3** makes up to 25 gallons diluted or finished spray
- One pint **PureSpray™ Green Formula 3** makes up to 12 gallons diluted or finished spray
- This product controls Adelgids, Aphids, Lace Bugs, Leafhoppers, Leafminers (larvae), Mealybugs, Mites, Plant Bugs, Psyllids, Sawfly larvae, Scales, Thrips, Whitefly and eggs of Aphids, Mites and Caterpillars (on landscape, trees, plants, shrubs and flowering plants, houseplants, herbs & vegetables, fruit and nut trees, and home greenhouse plants), as listed on this label.
- Additional information contained inside booklet on application, precautionary statements, storage and disposal.
- INSECTICIDE/FUNGICIDE/MITICIDE
- For control of: aphids, mealybugs, mites, scales, leaf hoppers, whiteflies, rust, powdery mildew and other pests as listed on the label
- 1 PT (16 fl. oz.) treats up to 1675 sq ft
- 1 QT (32 fl. oz.) treats up to 3350 sq ft
- 1 gal. (128 fl. oz.) treats up to 13400 sq ft
- 2 gal. (256 fl. oz.) treats up to 26800 sq ft.
- *{For 64-ounce container}* This container will treat up to 6700 square feet.
- *{For 32-ounce container}* This container will treat up to 3350 square feet.

PEEL HERE →



{Note to Reviewer: Braces { } indicate information that will not be on the final label.
Brackets [] indicate optional text that may or may not be on the final label.
Parentheses () indicate text that will appear on the final label in parenthesis. "/" indicates alternate language.}



{Aphid}

