

69421-33

06/10/2003

1/2

R0045072 F master 6/5/03 9:58 AM Page 1

Note: [Bracketed information is optional text.] Underlined text is new.

EPA Reg. No. 69421-33 Black Flag Ant &amp; Roach Killer Page 1 of 2

ACCEPTED

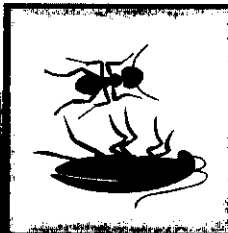
JUN 10 2003

Under the Federal Insecticide,  
Fungicide, and Rodenticide Act  
as amended, for the pesticide  
registered under EPA Reg. No.  
69421-33



# ANT & ROACH KILLER

[Mata hormigas Y Cucarachas] [Aroma De Lavanda]



[Original] -or- [Unscented] -or-  
[Pine Scent] -or- [Lavender Scent]  
-or- [Spring Fresh] -or- [Lemon Scent]

## ACTIVE INGREDIENTS

Propoxur . . . . . 0.500%  
OTHER INGREDIENTS . . . . . 99.500%  
TOTAL . . . . . 100.000%  
This product contains Petroleum Distillates.

## KEEP OUT OF REACH OF CHILDREN

**WARNING:** See back panel for additional  
precautionary statements.

**NET WT. ( ) oz. ( ) g**

claims for front or back

## [20% MORE FREE

18.6 oz for the price of 15.5 oz]

-or-

## [25% MORE FREE

13.75 oz for the price of 11 oz]

Kills Bugs Fast  
Kills for 15 Days  
Kills Fast  
Fast Killing Formula

end of claims for front or back

R0045-72

Note: [Bracketed information is optional text.] Underlined text is new.

EPA Reg. No. 69421-33 Black Flag Ant &amp; Roach Killer Page 2 of 2

**DIRECTIONS FOR USE**

It is a violation of Federal Law to use this product in a manner inconsistent with its labeling. Do not apply this product in a way that will contact any person or pet, either directly or indirectly. Keep people and pets out of the area during application.






[Remove [gray] tab from top of sprayer before initial use.]

**FOR HOUSEHOLD USE ONLY:** Important. Use only as a surface spray. Hold can in upright position to spray. Shake well before use. Direct spray away from face. Hold can 6 to 12 inches from surfaces, spraying at a rate of 1 foot per second or until surfaces are wet. For long lasting residual action, leave spray residue undisturbed. More frequent applications will be required to maintain control on plywood surfaces. Repeat treatment as necessary.

-or-

**FOR HOUSEHOLD USE ONLY:** Hold can upright to spray. Hold can 6 to 12 inches from surfaces, spraying until surfaces are wet. Do not spray into air; spray surfaces only. Spray away from face. Repeat spraying as necessary.

[For a narrow spray remove the (yellow) [plastic] extension tube and firmly insert it in -or- into the spray tip.]

	<b>ROACHES, PALMETTO BUGS, WATERBUGS, CRICKETS, CENTIPEDES, SILVERFISH, FIREBRATS, SCORPIONS AND SPIDERS</b>	Spray directly on insects when possible. Thoroughly spray cracks, crevices, baseboards, underneath chairs, tables, kitchen shelves, cupboards, sinks, refrigerators, around points of entry such as window sills, around garbage containers and other places where insects habitate. -or- Spray directly on roaches, in cracks, along baseboards, under refrigerators and sinks, in cupboards, and in other roach hiding places.
	<b>ANTS, CLOVER MITES, SOWBUGS, AND EARWIGS</b>	Spray door sills, window frames, outside foundations and porches. Spray directly on ant hills and on swarming ants outdoors. -or- Spray ants, ant trails, door sills, window frames, and wherever ants enter your home. Spray directly on ant hills, trails, and on swarming ants outdoors.
	<b>FLIES, MOSQUITOES, GNATS, WASPS</b>	Apply on screens, walls, door and window frames, light fixtures, and other outdoor surfaces where insects congregate. -or- Spray on screens, walls, door and window frames, light fixtures, and other outdoor surfaces where bugs gather.
	<b>PAPER NEST WASPS AND MUD DAUBER WASPS</b>	Apply a wet spray to the nests after dark when all pests have returned to their nests. -or- Spray nests after dark when bugs have returned.
	<b>BROWN DOG TICKS</b>	Thoroughly spray cracks, crevices and areas where pets normally lie down. Do not spray on pets. Allow the sprayed areas to dry thoroughly. Replace bedding before permitting use by animals. For dog kennels, apply to outside runways, window sills and ledges. -or- Do not spray on pets. Spray until wet cracks, crevices and areas where bugs or pets normally lie down. Before allowing pets back in area, let area dry completely then replace bedding. For dog kennels, spray on outside runways, window sills and ledges.

**PRECAUTIONARY STATEMENTS****HAZARDS TO HUMANS AND DOMESTIC ANIMALS -or- PETS**

**ENTRY RESTRICTION:** Do not allow people or pets to enter the treated area until spray has dried.

**WARNING:** May cause skin irritation. Harmful if swallowed or absorbed through the skin. Avoid contact with skin and clothing. Avoid breathing spray. Avoid eye contact. User should wash hands before eating, drinking, chewing gum, using tobacco or using the toilet. If pesticide contacts clothing, remove immediately. Then wash thoroughly and put on clean clothing. Do not apply to humans, pets, dishes or utensils. Do not use this product in food areas of commercial food handling establishments, restaurants or other places where food is prepared or processed. Do not contaminate feed or foodstuffs. Do not smoke while using. Provide adequate ventilation of areas being treated.

**FIRST AID:**

**IF ON SKIN OR CLOTHING:** Take off contaminated clothing. Rinse skin immediately with plenty of water for 15-20 minutes. **IF SWALLOWED:** Immediately call a poison control center or doctor. Do not induce vomiting unless told to do so by a poison control center or doctor. Do not give any liquid to the person. Do not give anything by mouth to an unconscious person. Call a poison control center or doctor for further treatment. Have the product container or label with you when calling a poison control center or doctor or going for treatment. Questions? Call 1-800-426-6228. **NOTE TO PHYSICIANS:** Contains petroleum distillate - vomiting may cause aspiration pneumonia. Contains an N-methyl carbamate that inhibits cholinesterase. Probable mucosal damage may contraindicate the use of gastric lavage.

**PHYSICAL OR CHEMICAL HAZARDS:**

**FLAMMABLE. CONTENTS UNDER PRESSURE.** Keep away from heat, sparks [, -or- and] open flame [and] pilot lights. Do not puncture or incinerate -or- burn container -or- can. Exposure to temperatures above 130°F may cause bursting. -or- Temperatures above 130°F may cause can to burst. Do not smoke while using. Avoid excessive wetting of plastic, vinyl or asphalt tile floor surfaces.

**ENVIRONMENTAL HAZARDS:**

This product is toxic to wildlife and aquatic invertebrates. Do not apply directly to water. Do not contaminate water by disposal of wastes. Do not apply as a landscape treatment [to lawns, shrubs, trees, or garden plants].

**STORAGE AND DISPOSAL:**

**Disposal:** Do Not Puncture or Incinerate! If Empty: Place in trash or offer for recycling if available. If partly filled: Call your local solid waste agency or 1-800-CLEANUP for disposal instructions.

Please print questions or comments to -or- Questions? Comments?  
 See code on can, bottom -or- bottom of can then call 1-800-887-3524 or write:  
 Black Flag Insect Control Systems  
 1221 Broadway, Oakland, CA 94612  
 Dist. by & ©1996 Made in U.S.A.  
 EPA Reg. No. 69421-33, EPA Est. 13891-IN-01  
 See code on can.



Contains no CFCs or other ozone depleting substances. Federal regulations prohibit CFC propellants in aerosols.

Complies with California Clean Air Act Standards

R0045-7.2