



U.S. ENVIRONMENTAL PROTECTION AGENCY  
Office of Pesticide Programs  
Registration Division (H7505C)  
401 "M" St., S.W.  
Washington, D.C. 20460

EPA Reg. Number:

Date of Issuance:

69117-2

AUG 25 1997

Term of Issuance:

Unconditional

Name of Pesticide Product:

Greyhound Insecticide

NOTICE OF PESTICIDE:

- Registration
- Reregistration

(under FIFRA, as amended)

Name and Address of Registrant (include ZIP Code):

ArborSystems LLC  
Reg West Company  
P.O. Box 2220  
Greeley, CO 80632-2220

Note: Changes in labeling differing in substance from that accepted in connection with this registration must be submitted to and accepted by the Registration Division prior to use of the label in commerce. In any correspondence on this product always refer to the above EPA registration number.

On the basis of information furnished by the registrant, the above named pesticide is hereby registered/reregistered under the Federal Insecticide, Fungicide and Rodenticide Act.

Registration is in no way to be construed as an endorsement or recommendation of this product by the Agency. In order to protect health and the environment, the Administrator, on his motion, may at any time suspend or cancel the registration of a pesticide in accordance with the Act. The acceptance of any name in connection with the registration of a product under this Act is not to be construed as giving the registrant a right to exclusive use of the name or to its use if it has been covered by others.

This product is unconditionally registered in accordance with FIFRA sec. 3(c)(5). Once a pesticide is registered, however, it is not regarded as permanently acceptable. Registration does not eliminate the need for continual reassessment of pesticides. If the Agency determines that, at any time, additional data are required to maintain in effect an existing registration, the Agency will require submission of such data under FIFRA section (3)(c)(2)(B).

1. Make the labeling changes listed below before you release the product for shipment:

a. On the front panel add "For Use By Professional Arborists/Applicators".

b. Delete the statement "Using the system, pesticides do not need to be sprayed on leaves or injected into the ground". Claims that imply control of all pests via a method of application are unacceptable especially since this product targets two insect pests.

c. On back panel under **Indications** revise the claim to read "Indicated for treatment of woody trees and shrubs for the control of Elm Leaf Beetles and Lace Bugs". When data supports control of additional pests the product label can be amended to add these pests.

Signature of Approving Official:

Date:

George T. LaRocca, Product Manager (13)  
Insecticide Branch, Registration Division (7505C)

d. The "chemical bottle" referred to in the Directions must be labeled. The minimum labeling required is product name, ingredient statement, signal word, child hazard warning, EPA Reg. No., and reference statement to main label.

e. Add the statement "Use Protective Eyewear and Rubber Neoprene Gloves" to the Hazards to Humans and Domestic Animals section of the label.

f. Add the phrase "EPA Registration No. 69117-2".

2. Submit two (2) copies of your final printed labeling before you release the product for shipment. Refer to the A-79 enclosure for a further description of final printed labeling.

If these conditions are not complied with, the registration will be subject to cancellation in accordance with FIFRA section 6(e). Your release for shipment of the product constitutes acceptance of these conditions.

A stamped copy of the label is enclosed for your records.

Enclosure

[FRONT PANEL]

# GREYHOUND Insecticide

For Systemic Insect Control on Landscape Ornamentals  
and Interior Plantscapes

**ACTIVE INGREDIENT:**

Abamectin B1* .....	1.9%
<b>INERT INGREDIENTS</b> .....	<u>98.1%</u>
Total:	100.0%

\*A mixture of avermectins containing ≥80% avermectin B1a (5-0-demethyl avermectin A1a) and ≤20% avermectin B1b (5-0-demethyl-25-de(1-methylpropyl)-25-(1-methylethyl) avermectin A1a)

Contains 0.0047 pound Abamectin per 4 oz. bottle

Keep Out of Reach of Children

### WARNING

See back panel for additional precautionary statements.

ACCEPTED  
with COMMENTS  
in EPA Letter Dated

Net Contents 4 oz. (120 ml)

EPA Reg. No. 69117-E      EPA Est. \_\_\_\_\_

Sold by  
**ArborSystems LLC**  
Omaha, NE 68134

Under the Federal Insecticide, Fungicide, and Rodenticide Act as amended, for the pesticide registered under EPA Reg. No.

69117-2

**BEST AVAILABLE COPY**

[BACK PANEL]

### PRECAUTIONARY STATEMENTS

#### Hazards to Humans & Domestic Animals

**WARNING:** Causes substantial but temporary eye injury. Do not get in eyes or on clothing. Prolonged or frequently repeated exposure may cause allergic skin reactions in some individuals. Harmful if inhaled or absorbed through the skin. Avoid contact with skin. May be fatal if swallowed. Remove contaminated clothing and wash before reuse. Wash thoroughly with soap and water after handling and before eating, drinking or using tobacco.

#### Statement of Practical Treatment

**If Inhaled:** Remove person to fresh air. If not breathing provide artificial respiration. **If Swallowed:** Immediately give one or two glasses of water and induce vomiting by touching back of the throat with finger. Do not induce vomiting or give anything by mouth to an unconscious person. **If on Skin:** Wash with plenty of soap and water. **If In Eyes:** Flush with plenty of water. Get medical attention in all cases. **Note to Physician:** Early signs of intoxication include mydriasis (dilated pupils), ataxia (unsteadiness) and muscle tremors. Toxicity following accidental ingestion of this product can be minimized by inducing vomiting within one half hour of exposure. If toxicity from exposure has progressed to cause severe vomiting, the extent of resultant fluid and electrolyte imbalance should be gauged. Appropriate supportive parenteral fluid replacement therapy should be given along with other required supportive measures (such as maintenance of blood pressure levels) as indicated by clinical signs, symptoms and measurements. In severe cases, observations should continue for at least several days until the clinical condition is stable and normal. Since abamectin is believed to enhance GABA activity in animals, it is probably wise to avoid drugs that enhance GABA activity (barbiturates, benzodiazepines, valproic acid) in patients with potentially toxic abamectin exposure.

For 24-hour emergency information call the Merck National Service Center at 1-800-672-6372.

### Environmental Hazards

This product is toxic to fish and wildlife. Do not apply directly to water. Do not contaminate water when disposing of equipment wash water or rinsate. This product is highly toxic to bees exposed to direct treatment or residues on blooming crops. Do not apply this product to blooming crops if bees are visiting the treatment area.

### Physical or Chemical Hazards

Do not use or store near heat or open flame.

For assistance, contact ArborSystems at 402-339-4459

### DIRECTIONS FOR USE

It is a violation of Federal law to use this product in a manner inconsistent with its labeling.

**Do Not Use on Crop-Bearing Trees**

### STORAGE AND DISPOSAL

Do not contaminate water, food or feed by storage or disposal.

**Storage:** Store in original container in a cool, dry place. **Disposal:** Do not reuse empty container; wrap and put in trash.

### GENERAL INFORMATION

#### ArborSystems Injection System using the Patented Wedgle™ Tip and WedgeChek™

The ArborSystems injection system injects pesticides or micronutrients into a tree with minimal wounding. This system will inject chemicals into the area of bark separation where the chemical can actively be transferred to other parts of the tree. Using this system, pesticides do not need to be sprayed onto the leaves or injected into the ground. Spring through summer is the ideal time for injection. Specifically, each tree needs to be inspected. The bark needs to be pliable and that depends upon the weather in your location.

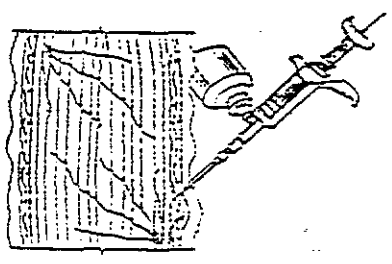
Injections made during the spring or summer will be more successful than waiting until the fall. Injections can be made either in anticipation of pest presence or after pests are observed. Pest control is anticipated to last a typical growing season, although it may be recommended to inject the plants one or two times per year or more often under severe and repeated pest pressure. This product has been evaluated for phytotoxicity on a wide range of ornamental plants. However, since all ornamental plants have not been tested, it is recommended that one plant be treated first to make certain that no phytotoxicity occurs. Do not use on sick plants nor plants weakened by extreme environmental conditions such as heat, flooding, cold, etc.

#### How to Use the ArborSystems Injection System

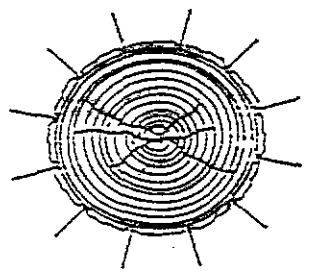
1. Use protective eyewear and rubber or neoprene gloves when handling or installing the ArborSystems injection system.
2. Attach the chemical bottle to the injector gun.
3. Attach the Wedgle Tip to the injector gun. Make sure the small hole in the tip is pointing straight up. Set the delivery volume on the syringe to 1 ml or ½ ml, as appropriate.
4. Determine the thickness of the bark. Insert the Wedgle Tip into the fissure of the tree. If the tip penetrates more than one-half inch, you will make the injection in the fissure. If the tip penetrates less than one-half inch, you will make the injection through the tight bark of the tree.
5. Insert the WedgeChek Punch into the tree. Remove the punch and squeeze the trigger to remove the bark core. Repeat this step while moving around the circumference of the tree. Be sure to follow the label directions on the chemical bottle to determine how many injection sites are needed on any given tree. Usually this is approximately 1 injection for every 4 to 6" of circumference.
6. Insert the WedgeChek by either placing it directly into the tree or by placing it onto the Wedgle Tip, prior to inserting the tip into the tree.
7. Insert the Wedgle Tip with a straight motion through the WedgeChek. Make sure the hole in the tip passes completely through the WedgeChek. As the tip is pushed through the WedgeChek and the bark, the blunt-edged tip automatically stops when it reaches the wood.
8. With a smooth, quick motion, firmly squeeze both handles at the same time. This quick motion allows the bark to separate and the chemical to be deposited into the area. The WedgeChek plugs the hole, allowing the chemical to remain in the tree.

- 9. Slowly withdraw the tip and repeat this step while moving around the circumference of the tree.
- 10. Move laterally and make the next injection until the entire tree trunk has been treated. After the tree has taken up the chemical, each WedgeChek can either be removed or left in the tree.

Indications	Dosage
Indicated for the treatment of woody trees and shrubs for the control of abamectin-sensitive insect pests such as Elm Leaf Beetles and Lace Bugs	1 ml per 4 to 6" of trunk circumference  Note: Depending on type of bark, the dosage per injection site may have to be reduced to 1/2 ml per site and the number of injection sites doubled.



Injection Into the Cambial Tissue of the Tree



Injection Into the Fissures (Not Bark) of the Tree

Wedge and WedgeChek are registered trademarks of ArborSystems LLC.

**NOTICE OF WARRANTY**

ArborSystems LLC warrants that this product conforms to the chemical description on the label thereof and is reasonably fit for the purposes stated on such label only when used in accordance with the directions under normal use conditions. It is impossible to eliminate all risks inherently associated with the use of this product. Plant injury, ineffectiveness or other unintended consequences may result because of such factors as weather conditions, presence of other materials, or the manner of use or application, all of which are beyond the control of ArborSystems. In no case shall ArborSystems be liable for consequential, special or indirect damages resulting from the use or handling of this product. All such risks shall be assumed by the buyer. Except as expressly provided herein, ArborSystems makes no warranties, guarantees, or representations of any kind, either expressed or implied, or by usage of trade, statutory or otherwise, with regard to the product sold, including but not limited to, merchantability, fitness for a particular purpose, use or eligibility of the product for any particular purpose, use or eligibility of the product for any particular trade usage. Buyer's or user's exclusive remedy, and ArborSystem's total liability, shall be for damages not exceeding the cost of the product.