

69117-1

2-18-2000

1/5

Please read instructions on reverse before completing form.

Form Approved. OMB No. 2070-0060. Approval Expires 05/31/98

United States <b>Environmental Protection Agency</b> 401 M Street, S.W. Washington, DC 20460-0001	<input type="checkbox"/> Registration <input type="checkbox"/> Amendment <input checked="" type="checkbox"/> Other	OPP Identifier Number
--	--	-----------------------

**Application for Pesticide – Section I**

1. Company/Product Number <b>EPA Reg. No. 69117-1</b>	2. EPA Product Manager <b>Betty Haerberer</b>	3. Proposed Classification <input checked="" type="checkbox"/> None <input type="checkbox"/> Restricted
4. Company/ Product (Name) <b>POINTER™ Insecticide</b>	PM # <b>04</b>	
5. Name and Address of Applicant (Include ZIP Code) <b>ArborSystems, LLC c/o RegWest Company P.O. Box 2220 Greeley, CO 80632-2220</b>	6. <b>Expedited Review.</b> In accordance with FIFRA Section 3(c)(3)(b)(i) my product is similar or identical in composition and labeling to:  EPA Reg. No. _____ Product Name _____	

☐ Check if this is a new address**Section – II****NOTIFICATION**

<input type="checkbox"/> Amendment – Explain below. <input type="checkbox"/> Resubmission in response to Agency letter dated _____ <input checked="" type="checkbox"/> Notification – Explain below.	<input type="checkbox"/> Final printed labels in response to Agency letter dated <b>FEB 18 2000</b> <input type="checkbox"/> "Me Too" Application. <input type="checkbox"/> Other – Explain below.
--	--

**Explanation:** Use additional page(s) if necessary. (For Section I and Section II.)**Submit label revision notification per PR Notice 98-10 (add pests and update Environmental Hazards).**

*This notification is consistent with the provisions of PR Notice 98-10 and EPA regulations at 40 CFR § 152.46, and no other changes have been made to the labeling or the confidential statement of formula of this product. I understand that it is a violation of 18 U.S.C. Sec. 1001 to willfully make any false statement to the EPA. I further understand that if this notification is not consistent with the terms of PR Notice 98-10 and 40 CFR § 152.46 this product may be in violation of FIFRA and I may be subject to enforcement action and penalties under sections 12 and 14 of FIFRA.*

**Section – III**

<b>1. Material This Product Will Be Packaged In:</b>			
Child Resistant Packaging <input type="checkbox"/> Yes* <input type="checkbox"/> No	Unit Packaging <input type="checkbox"/> Yes <input type="checkbox"/> No	Water Soluble Packaging <input type="checkbox"/> Yes <input type="checkbox"/> No	2. Type of Container <input type="checkbox"/> Metal <input type="checkbox"/> Plastic <input type="checkbox"/> Glass <input type="checkbox"/> Paper <input type="checkbox"/> Other (Specify): _____
<b>*Certification must be submitted</b>	If "Yes" Unit Packaging Wgt. _____	No. Per Container _____	If "Yes" Packaging Wgt. _____
3. Location of Net Contents Information <input type="checkbox"/> Label <input type="checkbox"/> Container		4. Size(s) Retail Container	5. Location of Label Directions <input type="checkbox"/> On Label <input type="checkbox"/> On Labeling Accompanying Product
6. Manner in Which Label is Affixed to Product <input type="checkbox"/> Lithograph <input type="checkbox"/> Stenciled <input type="checkbox"/> Paper glued <input type="checkbox"/> Other _____			

**Section - IV**

<b>1. Contact Point (Complete items directly below for identification of individual to be contacted, if necessary, to process this application.)</b>		
Name <b>Kim Davis, CC, APC</b>	Title <b>Consultant/Agent</b>	Telephone No. (Include Area Code) <b>(970) 353-0611</b>
<b>Certification</b> I certify that the statements I have made on this form and all attachments thereto are true, accurate, and complete. I acknowledge that any knowingly false or misleading statement may be punishable by fine or imprisonment or both under applicable law.		6. Date Application Received (Stamped) 
2. Signature 	3. Title <b>Consultant/Agent</b>	
4. Typed Name <b>Kim Davis, CC, APC</b>	5. Date <b>January 27, 2000</b>	

## POINTER™ INSECTICIDE

For Systemic Insect Control on Landscape Ornamentals  
and Interior Plantscapes

### ACTIVE INGREDIENT:

Imidacloprid: 1-[(6-Chloro-3-pyridinyl) methyl]-  
N-nitro-2-imidazolidinimine ..... 5%

INERT INGREDIENTS ..... 95%

Total ..... 100%

Contains 6 grams (0.2 oz.) active ingredient  
per 120 ml (4 oz.) bottle

Keep Out of Reach of Children

### WARNING

See below for additional precautionary statements

Net Wt. 4 oz. (120 ml)

EPA Reg. No. 69117-1

EPA Est. \_\_\_\_\_

NOTIFICATION

FEB 18 2000

[Sold by]

**Arbor Systems, LLC**

P.O. Box 34645  
Omaha, NE 68134

### PRECAUTIONARY STATEMENTS

#### Hazards to Humans & Domestic Animals

**WARNING:** Harmful if swallowed, inhaled or absorbed through skin. Causes substantial but temporary eye injury. Do not get in eyes or on clothing. Wear safety glasses. Wash thoroughly with soap and water after handling. Remove contaminated clothing and wash clothing before reuse. Do not apply to food-bearing plants.

#### Statement of Practical Treatment

**If Swallowed:** Call a physician or poison control center. Do not induce vomiting. Drink promptly a large quantity of milk, egg whites, gelatin solution, or if these are not available, drink large quantities of water. Avoid alcohol. **If in Eyes:** Hold eyelids open and flush with a steady, gentle stream of water for 15 minutes. Get medical attention.

#### Environmental Hazards

This product is highly toxic to fish and aquatic invertebrates. Do not apply directly to water, to areas where surface water is present or to intertidal areas below the mean high water mark, or allow runoff from treated areas to contaminate aquatic sites. Do not contaminate water when disposing of equipment washwaters. This product is highly toxic to bees exposed to direct treatment or residues on blooming plants or weeds. Do not apply this product or allow it to drift to blooming plants or weeds if bees are visiting the treatment area.

### DIRECTIONS FOR USE

It is a violation of Federal law to use this product in a manner inconsistent with its labeling.

#### Storage and Disposal

Do not contaminate water, food or feed by storage or disposal.

**Storage:** Store above 65°F in a cool, dry place and in such a manner as to prevent cross contamination with other pesticides, fertilizers, food and feed. Store in original container and out of reach of children, preferably in a locked storage area. **Disposal:** Do not reuse empty container; wrap and put in trash.

### GENERAL INFORMATION

#### ArborSystems Injection System using the Patented Wedgle™ Tip and WedgeChek™

The ArborSystems injection system injects pesticides or micronutrients into a tree with minimal wounding. The system will inject chemicals into the area of bark separation where the chemical can actively be transferred to other parts of the tree. Using this system, pesticides do not need to be sprayed onto the leaves or injected into the ground. Spring through summer is the ideal time for injection. Specifically, each tree needs to be inspected. The bark needs to be pliable and that depends on the weather in your location.

**Note:** When using Pointer™ Insecticide, the ArborSystems injection system must be cleaned periodically to prevent clogging.

### How to Use the ArborSystems Injection System

1. Use protective eyewear and rubber or neoprene gloves when handling or using the ArborSystems injection system.
2. Attach the chemical bottle to the injector gun.
3. Attach the Wedgle™ Tip to the injector gun.
4. Determine the thickness of the bark. Insert the Wedgle™ Tip into the fissure of the tree. If the tip penetrates more than one-half inch, you will make the injection in the fissure. If the tip penetrates less than one-half inch, you will make the injection through the tight bark of the tree.
5. Insert the WedgeChek™ punch into the tree. Remove the punch and squeeze the trigger to remove the bark core. Repeat this step while moving around the tree. Be sure to follow the label directions on the chemical bottle outsert to determine how many injection sites are needed on any given tree.
6. Insert the WedgeChek™ by either placing it directly into the tree or by placing it onto the Wedgle™ Tip, prior to inserting the tip into the tree.
7. Insert the Wedgle™ Tip with a straight motion through the WedgeChek™. Make sure the hole in the tip passes completely through the WedgeChek™. As the tip is pushed through the WedgeChek™ and the bark, the blunt-edged tip automatically stops when it reaches the wood.
8. With a smooth, quick motion, firmly squeeze both handles at the same time. This quick motion allows the bark to separate and the chemical to be deposited into the area. The WedgeChek™ plugs the hole, allowing the chemical to remain in the tree.
9. Slowly withdraw the tip and repeat this step while moving around the circumference of the tree.
10. After the tree has taken up the chemical, each WedgeChek™ can either be removed or left in the tree.

Pests Controlled	Dosage
Adelgids, Armored Scales (suppression), Aphids, Elm Leaf Beetles Larvae, Black Vine Weevil Larvae, Eucalyptus Longhorned Borer, Flatheaded Borers (including bronze birch borer and alder-birch borer), Japanese Beetles, Lacebugs, Leafhoppers, Leafminers, Mealybugs, Sawfly Larvae, Pine Tip Moth Larvae, Psyllids, Royal Palm Bugs, Scale Insects, Thrips (suppression), Whiteflies, White Grub Larvae (such as Japanese beetle larva, Chafers, <i>Phyllophaga</i> spp. Asiatic Garden Beetle, Oriental Beetle)	1 ml per 4 to 6" of trunk circumference.  Note: Depending on type of bark, the dosage per injection site may have to be reduced to ½ ml per site and the number of injection sites doubled.



Cross-section of tree showing  
Wedgle™ Tip and WedgeChek™

### NOTICE OF WARRANTY

ArborSystems, LLC warrants that this product conforms to the chemical description on the label and is reasonably fit for use under average conditions when used strictly in accordance with the directions on the labeling. ArborSystems, LLC does not make or authorize any agent or representative to make any other warranty, guarantee or representation, express or implied, concerning this product.

For assistance contact

**Arbor Systems, LLC**

P.O. Box 34645 Omaha, NE 68134

Toll-Free 1-800-698-4641 Phone (402) 339-4459 FAX (402) 339-5011

www.arborsystemsllc.com

Pointer™, Wedgle™ Tip and WedgeChek™ are registered trademarks of ArborSystems, LLC

Wedgle™ Tip is protected by U.S. Patent #5,239,773

WedgeChek™ is protected by U.S. Patent #5,797,215

## NOTIFICATION

FEB 18 2000

## POINTER™ Insecticide

## ACTIVE INGREDIENT:

Imidacloprid: 1-[[6-Chloro-3-pyridinyl)methyl]-N-nitro-2-imidazolidinimine.....5%

INERT INGREDIENTS.....95%

Total: 100%

Contains 6 grams (0.2 oz.) active ingredient per 120 ml (4 oz.) bottle

Keep Out of Reach of Children

## WARNING:

See Insert/Outer Packaging for  
Additional Precautionary Statements

## PRECAUTIONARY STATEMENTS

Refer to Insert/Outer Packaging for complete Precautionary Statements.

## DIRECTIONS FOR USE

It is a violation of Federal law to use this product in a manner inconsistent with its labeling.

## STORAGE AND DISPOSAL

Do not contaminate water, food or feed by storage or disposal. Storage: Store above 65°F in a cool, dry place and in such a manner as to prevent cross contamination with other pesticides, fertilizers, food and feed. Store in original container and out of reach of children, preferably in a locked storage area. Disposal: Do not reuse empty container; wrap and put in trash.

Refer to Insert/Outer Packaging for complete Directions for Use.

Net Wt. 4 oz. (120 ml) EPA Reg. No. 69117-1 EPA Est. 4346-NB-1

Sold by

Arbor Systems, LLC

Omaha, NE 68134

LIT0012 5/97 IM

## POINTER™ Insecticide

For Systemic Insect Control on Landscape Ornamentals and Interior Plantscapes

### ACTIVE INGREDIENT:

Imidacloprid: 1-[(6-Chloro-3-pyridinylmethyl)-N-methyl-2-imidazolidinylidene]... 95%

### INERT INGREDIENTS

Total: 100%

Contains 6 grams (0.2 oz.) active ingredient per 120 ml (4 oz.) bottle

Keep Out of Reach of Children

### WARNING

See inside for additional precautionary statements.

Net Wt. 4 oz. (120 ml)

EPA Reg. No. 69117-1

EPA Est. 69117-NE-1

Sold by

ArborSystems, LLC

Omaha NE 68134

## PRECAUTIONARY STATEMENTS

### Hazards to Humans and Domestic Animals

**WARNING:** Harmful if swallowed, inhaled or absorbed through skin. Causes substantial but temporary eye injury. Do not get in eyes or on clothing. Wear safety glasses. Wash thoroughly with soap and water after handling. Remove contaminated clothing and wash clothing before reuse. Do not apply to food-bearing plants.

### Statement of Practical Treatment

**If Swallowed:** Call a physician or poison control center. Do not induce vomiting. Drink promptly a large quantity of milk, egg whites, gelatin solution, or if these are not available, drink large quantities of water. Avoid alcohol. **If in Eyes:** Hold eyelids open and flush with a steady, gentle stream of water for 15 minutes. Get medical attention.

### Environmental Hazards

This product is highly toxic to fish and aquatic invertebrates. Do not apply directly to water, to

areas where surface water is present or to intertidal areas below the mean high water mark. Do not contaminate water when disposing of equipment washwaters. This product is highly toxic to bees exposed to direct treatment or residues on blooming plants or weeds. Do not apply this product or allow it to drift to blooming plants or weeds if bees are visiting the treatment area.

### DIRECTIONS FOR USE

It is a violation of Federal law to use this product in a manner inconsistent with its labeling.

## STORAGE AND DISPOSAL

Do not contaminate water, food or feed by storage or disposal. **Storage:** Store above 65°F in a cool, dry place and in such a manner as to prevent cross contamination with other pesticides, fertilizers, food and feed. Store in original container and out of reach of children, preferably in a locked storage area. **Disposal:** Do not reuse empty container; wrap and put in trash.

## GENERAL INFORMATION

### ArborSystems Injection System Using the Patented Wedgle™ Tip and WedgeChek™

The ArborSystems injection system injects pesticides or micronutrients into a tree with minimal wounding. This system will inject chemicals into the area of bark separation where the chemical can actively be transferred to other parts of the tree. Using this system, pesticides do not need to be sprayed onto the leaves or injected into the ground. Spring through summer is the ideal time for injection.

Specifically, each tree needs to be inspected. The bark needs to be pliable and that depends on the weather in your location.

**Note:** When using Pointer™ Insecticide, the ArborSystems injection system must be cleaned periodically to prevent clogging.

### How to use the ArborSystems injection system:

1. Use protective eyewear and rubber or neoprene gloves when handling or using the ArborSystems injection system.

2. Attach the chemical bottle to the injector gun.

3. Attach the Wedgle™ Tip to the injector gun.

4. Determine the thickness of the bark. Insert the Wedgle™ Tip into the fissure of the tree. If the tip penetrates more than one-half inch, you will make the injection in the fissure. If the tip penetrates less than one-half inch, you will make the injection through the tight bark of the tree.

5. Insert the WedgeChek™ punch into the tree. Remove the punch and squeeze the trigger to remove the bark

core. Repeat this step while moving around the circumference of the tree. Be sure to follow the label directions on the chemical bottle outsert to determine how many injection sites are needed on any given tree.

6. Insert the WedgeChek™ by either placing it directly into the tree or by placing it onto the Wedgle™ Tip, prior to inserting the tip into the tree.

7. Insert the Wedgle™ Tip with a straight motion through the WedgeChek™. Make sure the hole in the tip passes

completely through the Wedge-Chek™. As the tip is pushed through the WedgeChek™ and the bark, the blunt-edged tip automatically stops when it reaches the wood.

8. With a smooth, quick motion, firmly squeeze both handles at the same time. This quick motion allows the bark to separate and the chemical to be deposited into the area. The WedgeChek™ plugs the hole, allowing the chemical to remain in the tree.

9. Slowly withdraw the tip and

repeat this step while moving around the circumference of the tree.

10. After the tree has taken up the chemical, each WedgeChek™ can either be removed or left in the tree.

### Pests Controlled

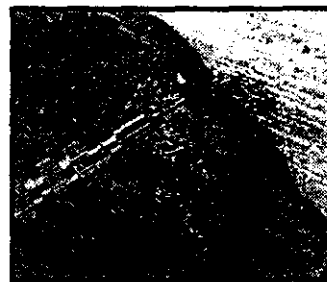
Adelgids, Armored Scales (suppression), Aphids, Elm Leaf Beetles, Black Vine Weevil Larvae, Eucalyptus Longhorned Borer, Flatheaded Borers

(including bronze birch borer and alder-birch borer), Japanese Beetles, Lacebugs, Leafhoppers, Leafminers, Mealybugs, Sawfly Larvae, Pine Tip Moth Larvae, Psyllids, Royal Palm Bugs, Scale Insects, Thrips (suppression), Whiteflies, White Grub Larvae (such as Japanese beetle larvae, Chafers, *Phyllophaga* spp., Asiatic Garden Beetle, Oriental Beetle).

### Dosage

1 ml per 4 to 6" of trunk circumference

**Note:** Depending on type of bark, the dosage per injection site may have to be reduced to 1/2 ml per site and the number of injection sites doubled.



Cross-section of tree showing Wedgle™ Tip and WedgeChek™

### NOTICE OF WARRANTY

ArborSystems, LLC warrants that this product conforms to the description on the label and is reasonably fit for use under average conditions when used strictly in accordance with the directions on the labeling. ArborSystems, LLC does not make or authorize any agent or representative to make any other warranty, guarantee or representation, express or implied, concerning this product.

For assistance, contact

**ArborSystems, LLC**

P.O. Box 3464 • Omaha, NE 68134

Toll-Free: 1-800-698-4641

Phone: (402) 339-4459

FAX: (402) 339-5011

www.arborsystemsllc.com

Pointer™, Wedgle™ Tip and WedgeChek™ are trademarks of ArborSystems, LLC

Wedge™ Tip is protected by U.S. Patent #5,239,773

WedgeChek™ is protected by U.S. Patent #5,757,215