



U.S. ENVIRONMENTAL PROTECTION AGENCY
Office of Pesticide Programs
Registration Division (H7505C)
401 "M" St., S.W.
Washington, D.C. 20460

EPA Reg.
Number:

69117-1

Date of Issuance:

SEP 20 1995

NOTICE OF PESTICIDE:
 x Registration
 Reregistration

(under FIFRA, as amended)

Term of Issuance: Until
Reregistration

Name of Pesticide Product:

Pointer Insecticide

Name and Address of Registrant (include ZIP Code):

ArborSystems, Inc.
c/o RegWest Company
P.O. Box 2220
Greeley, CO 80632-2220

Note: Changes in labeling differing in substance from that accepted in connection with this registration must be submitted to and accepted by the Registration Division prior to use of the label in commerce. In any correspondence on this product always refer to the above EPA registration number.

On the basis of information furnished by the registrant, the above named pesticide is hereby registered/reregistration under the Federal Insecticide, Fungicide and Rodenticide Act.

Registration is in no way to be construed as an endorsement or recommendation of this product by the Agency. In order to protect health and the environment, the Administrator, on his motion, may at any time suspend or cancel the registration of a pesticide in accordance with the Act. The acceptance of any name in connection with the registration of a product under this Act is not to be construed as giving the registrant a right to exclusive use of the name or to its use if it has been covered by others.

This product is conditionally registered in accordance with FIFRA sec. 3(c)(7)(A) provided that you:

1. Submit and/or cite all data or other material required for registration/reregistration of your product under FIFRA sec. 3(c)(5) or FIFRA sec. 4 when the Agency requires all registrants of similar products to submit such data.

2. Add the phrase EPA Registration No. "69117-1" to your label before you release the product for shipment.

Signature of Approving Official:

DHE
Dennis H. Edwards, ^{JR} Product Manager (19)
Insecticide Branch Rodenticide Branch
Registration Division (7505C)

Date:

SEP 20 1995

3. Under General Information delete the statement "Worker exposure is minimized by the use of patented Wedgle™...."

4. Submit five (5) copies of your final printed labeling before you release the product for shipment. Refer to the A-79 enclosure for a further description of final printed labeling.

If these conditions are not complied with, the registration will be subject to cancellation in accordance with FIFRA sec. 6(e). Your release for shipment of the product constitutes acceptance of these conditions.

A stamped copy of the label is enclosed for your records.

Sincerely,

DHE

Dennis H. Edwards, Jr.
Product Manager 19
Insecticide-Rodenticide Branch
Registration Division (7505C)

Enclosure

[FRONT PANEL]

POINTER Insecticide

For Systemic Insect Control on Landscape Ornamentals
and Interior Plantscapes

ACTIVE INGREDIENT:

Imidacloprid: 1-[(6-Chloro-3-pyridinyl)methyl]-N-nitro-2-imidazolidinimine 5%

INERT INGREDIENTS 95%

Total: 100%

Contains 6 grams (0.2 oz.) active ingredient per 120 ml (4 oz.) bottle

Keep Out of Reach of Children

CAUTION

See back panel for additional precautionary statements.

Net Wt. ____ oz. (ml)

ACCEPTED
with COMMENTS
in EPA Letter Dated

EPA Reg. No. 69117-R EPA Est. _____

SEP 20 1995

Under the Federal Insecticide,
Fungicide, and Rodenticide Act
as amended, for the pesticide
registered under EPA Reg. No.

Sold by
ArborSystems, Inc.
Omaha, NE 68134

69117-1

[BACK PANEL]

PRECAUTIONARY STATEMENTS

Hazards to Humans & Domestic Animals

CAUTION: Harmful if swallowed, inhaled or absorbed through skin. Causes eye irritation. Avoid contact with skin, eyes or clothing. Avoid breathing vapor. Wash thoroughly with soap and water after handling. Do not apply to food-bearing plants. Keep children and pets from treated area until dry.

Statement of Practical Treatment

If Swallowed: Call a physician or poison control center immediately. Drink one or two glasses of water and induce vomiting by touching back of throat with finger, or if available, by administering syrup of ipecac. If syrup of ipecac is available, administer 1 tablespoonful (15 ml) of syrup of ipecac followed by one to two glasses of water. If vomiting does not occur within 20 minutes, repeat the dose once. Do not induce vomiting or give anything by mouth to an unconscious or convulsing person. **If On Skin:** Wash thoroughly with soap and water. Get medical attention if irritation occurs. Remove contaminated clothing and wash before reuse. **If In Eyes:** Hold eyelids open and flush with a steady, gentle stream of water for 15 minutes. Get medical attention if irritation persists. **If Inhaled:** Remove person to fresh air. Get immediate medical attention. **Note to Physician:** No specific antidote is available. Treat the patient symptomatically.

Environmental Hazards

This product is highly toxic to fish and aquatic invertebrates. Do not apply to water or allow runoff from treated areas to contaminate aquatic sites. Do not contaminate water when disposing of equipment washwaters. This product is highly toxic to bees exposed to direct treatment or residues. Do not apply this product to blooming plants if bees are visiting the treatment area.

For assistance, contact ArborSystems at 402-571-9786

DIRECTIONS FOR USE

It is a violation of Federal law to use this product in a manner inconsistent with its labeling.

STORAGE AND DISPOSAL

Do not contaminate water, food or feed by storage or disposal.

Storage: Store in a cool, dry place and in such a manner as to prevent cross contamination with other pesticides, fertilizers, food and feed. Store in original container and out of reach of children, preferably in a locked storage area. **Disposal:** Do not reuse empty container; wrap and put in trash.

[Professional Use Label]

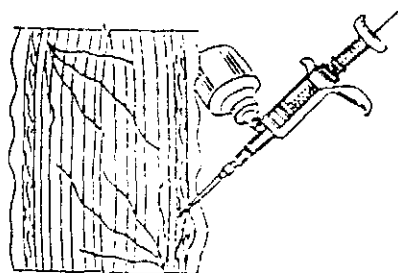
GENERAL INFORMATION ArborSystems Injection System

The ArborSystems injection system is a new, patented (Patent No. 5,239,777) method of getting pesticides and micronutrients into a tree with minimal wounding. The system will inject chemicals into the cambial tissue of the tree where they can be dispersed by the tree's vascular system. No holes which wound the tree need to be drilled into the tree. Using this system, pesticides do not need to be sprayed onto the leaves or injected into the ground. Worker exposure is minimized by the use of the patented Wedgle™ tip and much smaller quantities of pesticides may be used for more effective control. **Note:** Injections made during the spring or summer will be more successful than waiting until the fall.

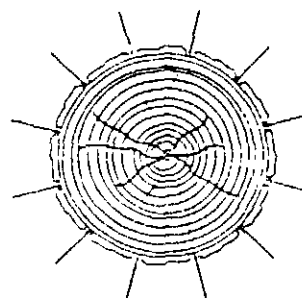
How to use the ArborSystems injection system:

1. Use protective eyewear and rubber or neoprene gloves when handling or installing the ArborSystems injection system.
2. Attach the bottle of chemical to the injection system. Secure the bottle tightly to the syringe.
3. Attach the Wedgle tip to the syringe. Make sure the small hole in the tip is pointing straight up. Set the delivery volume on the syringe to 1 ml or ½ ml, as appropriate.
4. Determine the number of injection sites by the label on the bottle. Usually this is approximately 1 injection for every 6" of circumference.
5. Locate a fissure on the bark of the tree. This can be from the trunk flare to belt height. Using hand pressure only, insert the Wedgle tip into the fissure using a quick motion. Use straight line pressure when inserting the tip. You may insert the tip horizontally or at a slight downward angle into the tree. Make sure you are not injecting into dead wood. On some trees it may be more convenient to inject at the root flare.
6. The Wedgle tip will automatically "bottom out" at the end of the cambial tissue of the tree. Depending upon the type of tree, this can be from 1/4" to 3/4". Trees with a thicker cambial zone, such as hackberry or American elm, may go in deeper.
7. When the tip bottoms against the sapwood, squeeze the syringe firmly and very quickly. The bark and cambial zone will separate slightly from the sapwood allowing the chemical to enter. Failure to quickly squeeze the syringe may not separate the bark and thus not allow the chemical to enter.
8. Depending upon the variety of the tree, you may need to wait from 10-60 seconds per injection site for the chemical to absorb. When the chemical has been absorbed, slowly remove the tip allowing the slit created by the Wedgle tip to slowly close.
9. On trees with very thin bark, such as locust, you may need to halve the amount of chemical injected and double the number of injection sites.
10. Move laterally and make the next injection until the entire tree trunk has been treated.

Pests Controlled	Dosage
Adelgids, Aphids, Elm Leaf Beetle Larvae, Japanese Beetle, Lacebugs, Leafhoppers, Leafminers, Mealybugs, Scale Insects, Thrips	1 ml per 6" of trunk circumference Note: Depending on type of bark, the dosage per injection site may have to be reduced to ½ ml per site and the number of injection sites doubled.



Injection Into the Cambial
Tissue of the Tree



Injection Into the Fissures
(Not Bark) of the Tree

GENERAL INFORMATION

Tree Insecticide Injectors

This product contains an insecticide that is injected into holes drilled into the tree trunk at ground level. The insecticide controls Adelgids, Aphids, Elm Leaf Beetle Larvae, Japanese Beetle, Lacebugs, Leafhoppers, Leafminers, Mealybugs, Scale Insects and Thrips on all types of trees. The premeasured doses are convenient and easy to use.

TOOLS: Tape measure and 1/4" drill

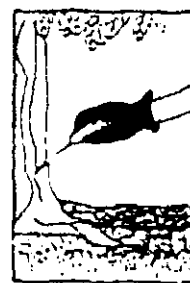
DOSAGE: Measure the circumference of the tree trunk at 4 feet above the ground. You will need one ampule (0.36 oz.) for every six inches of circumference.

INSTRUCTIONS:

1. Use rubber or neoprene gloves when handling this product.
2. Drill 1/2" deep holes into the tree at ground level. The holes should be drilled at a downward slant (about 45°). The holes should be evenly spaced around the tree. Use only a clean, sharp drill bit. Brad point drill bits are best.
3. Cut off the tip and squeeze the chemical into the holes. Use one ampule for each hole.



Drill Holes



Squeeze In Chemical

Treatments are more effective early in the growing season.

Note: Holes drilled in a tree are wounds. One quarter inch and larger holes at 3 inch spacing should not be drilled in a tree more than once a year nor more than two consecutive years.

NOTICE OF WARRANTY

ArborSystems, Inc. warrants that this product conforms to the description on the label and is reasonably fit for use under average conditions when used strictly in accordance with the directions on the labeling. ArborSystems, Inc. does not make nor authorize any agent or representative to make any other warranty, guarantee or representation, express or implied, concerning this product.