

68387-8

05/17/2002

1/45



U.S. ENVIRONMENTAL PROTECTION AGENCY

OFFICE OF PESTICIDE PROGRAMS
1200 Pennsylvania Avenue NW
Washington, DC 20460-0001

EPA Reg. Number
68387-8

Date of Issuance
MAY 17 2002

Term of Issuance
Unconditional

NOTICE OF PESTICIDE

Registration
 Reregistration
(under FIFRA, as amended)

Name of Pesticide Product
VAPORPH₃OS[®]
Phosphine Fumigant

Name and Address of Registrant (include ZIP Code):

CYTEC Industries, Inc.
West Patterson, N.J. 07424

Note: Changes in labeling differing in substance from that accepted in connection with this registration must be submitted to and accepted by the Registration Division prior to use of the label in commerce. In any correspondence on this product always refer to the above EPA registration number.

On the basis of information furnished by the registrant, the above named pesticide product is hereby registered under the Federal Insecticide, Fungicide and Rodenticide Act (FIFRA).

Registration is in no way to be construed as an endorsement or recommendation of this product by the Agency. In order to protect health and the environment, the Administrator, on his motion, may at any time suspend or cancel the registration of a pesticide in accordance with the Act. The acceptance of any name in connection with the registration of a product under this Act is not to be construed as giving the registrant a right to exclusive use of the name or to its use if it has been covered by others.

This product is unconditionally registered in accordance with FIFRA sec. 3(c)(5) provided that you:

1. Submit and/cite all data required for registration of your product under FIFRA sec. 3(c)(5) when the Agency requires all registrants of similar products to submit such data; and submit acceptable responses required for reregistration of your product under FIFRA sec. 4.
2. Replace "EPA File Symbol 68387-I" with "EPA Reg. No. 68387-8" on the mid panel of label and on page 2 of the Application Manual.

Stamped copies of the draft label and Application Manual are enclosed for your records. Submit a copy of your final printed labeling and application manual before you release the product for shipment. Your release of the product for shipment constitutes acceptance of these conditions. If the above conditions are not complied with, the registration will be subject to cancellation in accordance with FIFRA sec. 6(e). Should you have any questions, do not hesitate to contact me at 703-605-0368.

Signature of Approving Official:

S. Oonnithan, Ph.D.
Entomologist
Insecticide-Rodenticide Branch
Registration Division (7505C)

Date:

5/17/2002

RESTRICTED USE PESTICIDE

DUE TO ACUTE INHALATION TOXICITY OF HIGHLY TOXIC PHOSPHINE (HYDROGEN PHOSPHIDE, PH₃) GAS

For retail sale to and use only by certified applicators for those uses covered by the appropriate certification or persons trained in accordance with this product manual working under the direct supervision and in the physical presence of the certified applicator. Physical presence means on-site or on the premises. Read and follow the label and the product's Application Manual, which contains complete instructions for the safe use of this pesticide.

VAPORPH₃OS™ Phosphine Fumigant

Pure phosphine gas for on-site blending with registered carbon dioxide to produce a non-flammable fumigant gas for use in controlling pests in enclosed empty spaces and enclosed space containing stored listed raw agricultural commodities, processed foods, stored tobacco, animal feeds, and nonfood products. For details refer to the VAPORPH₃OS™ Phosphine Fumigant Application Manual.

ACTIVE INGREDIENTS: Phosphine Gas (PH₃).....99.3% By Weight
Inerts.....0.7%
TOTAL 100.0%



**KEEP OUT OF REACH OF CHILDREN
DANGER - POISON – PELIGRO**



SEE SIDE PANEL OF LABEL FOR ADDITIONAL PRECAUTIONARY STATEMENTS

PELIGRO AL USUARIO: Si usted no lee ingles, no use este productor hasta que la etiqueta se le haya sido explicado ampliamente
(TO THE USER: If you cannot read English, do not use this product until the label has been fully explained to you.)

FIRST AID

Symptoms of exposure to this product are headache, dizziness, nausea, difficult breathing, vomiting and diarrhea. In all cases of overexposure, get medical attention immediately. Take victim to doctor, hospital or emergency treatment facility.

If Inhaled	<ul style="list-style-type: none"> • Move person to fresh air • If person is not breathing, call 911 or an ambulance, then give artificial respiration, preferably mouth-to-mouth if possible. • Call a poison control center or doctor for further treatment advice. 	<p>ACCEPTED</p> <p>MAY 17 2002</p> <p><small>Under the Federal Insecticide, Fungicide, and Rodenticide Act, this gas is discharged from registered units. EPA Reg. No. 68387-8</small></p>
If on Skin	<ul style="list-style-type: none"> • May cause frostbite to unprotected skin upon contact with dispensing equipment rapidly. • Take off contaminated clothing and allow clothes to aerate in ventilated room prior to laundering. • Call a poison control center or doctor for treatment advice. 	
If in Eyes	<ul style="list-style-type: none"> • Hold eye open and rinse slowly and gently with cool water for 15-20 minutes in case of freezing or cryogenic "burns." Do not rinse eyes with hot or even tepid water. • Remove contact lenses, if present, after the first 5 minutes, then continue rinsing. • Call a poison control center or doctor for treatment advice. • Never introduce oil or ointment into eyes without medical advice. 	

HOT LINE NUMBER

Have the Application Manual with you when calling a poison control center or doctor, or going for treatment. You may also contact 1-800-424-9300 or 703-527-3887 for emergency medical treatment information.

NOTES TO PHYSICIAN

SEE SIDE PANEL FOR SPECIFIC DETAILED INFORMATION PERTAINING TO TREATMENT OF EXPOSURE TO PHOSPHINE FUMIGANTS

CYTEC Industries Inc. West Paterson, NJ 07424 USA

EPA Registration No. 68387 – xx

EPA Establishment No. 68387-CAN-1

Net Contents: 30.9 lbs (14.0 kg)

THIS PRODUCT IS ACCOMPANIED BY AN APPROVED LABEL AND AN APPLICATION MANUAL. READ THE ENTIRE LABEL AND APPLICATION MANUAL BEFORE USE. ALL PARTS OF THE LABEL AND APPLICATION MANUAL ARE EQUALLY IMPORTANT FOR SAFE AND EFFECTIVE USE OF THIS PRODUCT. CALL CYTEC INDUSTRIES, INC. IF YOU HAVE ANY QUESTIONS OR DO NOT UNDERSTAND ANY PART OF THE LABEL OR APPLICATION MANUAL. IF THE PRODUCT LABEL OR APPLICATION MANUAL ARE LOST, CONTACT CYTEC INDUSTRIES INC. TO OBTAIN A REPLACEMENT COPY.

3/45

PRECAUTIONARY STATEMENTS HAZARDS TO HUMANS AND DOMESTIC ANIMALS DANGER/PELIGRO – POISON

May be fatal if inhaled. The liquid may cause burns. Avoid contact with skin and eyes and avoid breathing vapor. Keep animals, children and unauthorized persons away from area under treatment, until area is shown to be free from phosphine gas, as indicated by a gas-measuring device. Working in an area with undetermined concentrations requires a self-contained breathing apparatus (SCBA) with full face-piece operated in a pressure-demand mode. Do not get in eyes, in nose, on skin or on clothing. Do not eat, drink or smoke while handling VAPORPH₃OS™ Phosphine Fumigant. Phosphine gas may deaden the sense of smell. Do not depend solely on the odor to detect VAPORPH₃OS™ Phosphine Fumigant. Observe proper application, aeration, re-entry and dosing procedures specified in the Application Manual to prevent overexposure.

NOTE TO PHYSICIAN – THIS IS PHOSPHINE

Mild exposure by inhalation of VAPORPH₃OS™ Phosphine Fumigant causes malaise (indefinite feeling of sickness), ringing of ears, fatigue, nausea and pressure in chest, which are relieved by removal to fresh air. Moderate poisoning causes weakness, vomiting, epigastric pain (pain just above the stomach), chest pain, diarrhea and dyspnea (difficulty in breathing). Symptoms of severe poisoning may occur within a few hours or up to several days, resulting in pulmonary edema (fluid in lungs) and may lead to dizziness, cyanosis (blue or purple skin color), unconsciousness and death.

In sufficient quantity it affects the liver, kidneys, lungs, nervous system, and circulatory system. Inhalation can cause lung edema (fluid in lungs) and hyperemia (excess of blood in a body part), small perivascular brain hemorrhages and brain edema (fluid in brain). Ingestion can cause lung and brain symptoms, but damage to the viscera (body cavity organs) is more common. Poisoning may result in (1) pulmonary edema, (2) liver elevated serum GOT, LDH and alkaline phosphatase, reduced prothrombin, hemorrhage and jaundice (yellow skin color) and (3) kidney hematuria (blood in urine) and anuria (abnormal or lack of urination). Pathology is characteristic of hypoxia (oxygen deficiency in body tissue). Frequent exposure over a period of days or weeks may cause poisoning. Treatment is symptomatic.

The following measures are suggested for use by the physician in accordance with the physician's own judgment:

1. Exposure of skin to rapidly evaporating liquid may cause cryogenic "burn." Treat the "burn" in a similar manner as a thermal burn.
2. In case of freezing or cryogenic "burns" to eyes by rapidly evaporating liquid, RINSE EYES WITH COOL WATER. Do not rinse eyes with hot or even tepid water.
3. In its milder to moderate forms (symptoms of poisoning may take up to 24 hours to appear), the following is suggested: Complete rest 1-2 days during which the patient must be kept quiet and warm. If the patient suffers from vomiting or increased blood sugar, appropriate solutions should be administered. Treatment with oxygen is recommended, as is the administration of cardiac and circulatory stimulants.
4. In cases of severe poisoning (intensive care unit is recommended):

Where pulmonary edema is observed, steroid therapy should be considered and close medical supervision is recommended. Blood transfusions may be necessary. In case of manifest pulmonary edema, venesection should be performed under vein pressure control. Heart glycosides (I.V.) can be used in case of hemoconcentration. Venesection may result in shock. In the case of progressive edema of the lungs, immediately intubate and remove edema fluid and administer oxygen over-pressure respiration, as well as any measures required for shock treatment. In case of kidney failure, extracorporeal hemodialysis is necessary. There is no specific antidote known for this poisoning.

ENVIRONMENTAL HAZARDS

Phosphine gas is highly toxic to fish and wildlife. Exposure to non-target organisms should be avoided.

PHYSICAL AND CHEMICAL HAZARDS

Phosphine may ignite spontaneously at levels above its lower flammability limit of 1.8% v/v (18,000 ppm). It is important not to exceed this concentration. Phosphine should be blended with carbon dioxide before using as a fumigant. Ignition of high concentration of phosphine can produce a very energetic reaction. Explosions can occur under these conditions and may cause severe personal injury. Never allow the buildup of phosphine to exceed explosive concentrations.

Contents under pressure. Do not use or store near heat or open flame. Do not puncture or incinerate container. Exposure to temperatures above 130°F may cause bursting. Do not drop the container.

Never open cylinder in confined space without a self-contained breathing apparatus (SCBA) with full face-piece and operated in a pressure-demand mode. Never enter a space under fumigation with VAPORPH₃OS™ Phosphine Fumigant without first checking the gas concentration levels and wearing the appropriate breathing apparatus. These precautions will also reduce the applicator's exposure to gas. Phosphine gas has a low solubility in water and oils and is stable at normal fumigation temperatures. However, it may react with certain metals and cause corrosion, especially at higher temperatures and relative humidities. Metals such as copper, brass and other copper alloys, and precious metals such as gold and silver are susceptible to corrosion. Thus, small electric motors, smoke detectors, brass sprinkler heads, batteries and battery chargers, fork lifts, temperature monitoring systems, switching gears, communication devices, computers, calculators and other electronic or electrical equipment should be protected or removed before fumigation. In most cases all electronic equipment must be removed. Phosphine gas will also react with certain metallic salts and therefore, sensitive items such as photographic film, some inorganic pigments, etc., should not be exposed. Under high vacuum conditions, phosphine gas may cause an explosive hazard. Do not apply fumigant in vacuum chambers.

DIRECTIONS FOR USE

It is a violation of federal law to use this product in a manner inconsistent with its labeling or application manual. VAPORPH₃OS™ Phosphine Fumigant is a restricted use Pesticide due to the acute inhalation toxicity of phosphine, PH₃ gas. For retail sale to and use only by certified applicators for those uses covered by the applicator's certification or persons trained in accordance with the Application Manual working under the direct supervision and in the physical presence of the certified applicator. Physical presence means on-site or on the premises. VAPORPH₃OS™ Phosphine Fumigant is a hazardous material and may be used only by individuals trained in its proper use.

VAPORPH₃OS™ Phosphine Fumigant is pure phosphine gas for use as a fumigant after on-site blending with a registered source of carbon dioxide for the production of non-flammable phosphine fumigant gas, refer to the VAPORPH₃OS™ Phosphine Fumigant Application Manual for specific pests controlled, detailed directions for use, precautions, and recommendations.

STORAGE INSTRUCTIONS

INDOOR STORAGE

The storage of poison gases in occupied spaces is not recommended. Indoor storage in a separate building with no other occupancy is suitable. The building should be adequately ventilated and equipped with a continuous phosphine monitoring and alarm system that is activated at the TLV of 0.3 ppm. In some jurisdictions, the indoor storage of toxic gases is prohibited.

OUTDOOR STORAGE

It is recommended that both full and used VAPORPH₃OS™ Phosphine Fumigant cylinders be stored outdoors in a dedicated and properly designed and labeled storage area. The following are recommended for outdoor storage:

- A firm and level surface, preferably reinforced concrete, well drained.
- A secured and locked area.
- Cylinders should never be stored where the temperature will exceed 125 °F (51.7 °C).
- A means of securing all cylinders.
- Away from building ventilation intakes.

SECURING CYLINDERS

Cylinders must be stored in an upright position and protected from falling. Protection against falls can include the use of cylinder pallets with straps, walls and securing chains, or pens constructed from steel handrail or like construction.

DISPOSAL INSTRUCTIONS

Once used, VAPORPH₃OS™ Phosphine Fumigant cylinders are to be returned only to an authorized distributor or their designated point of return. This applies to all cylinders, regardless of the quantity of material remaining in the cylinder.

SPILL AND LEAK PROCEDURES

GENERAL

All releases can produce high levels of gas, and therefore, attending personnel must wear a self-contained breathing apparatus (SCBA) or its equivalent when the concentration of phosphine gas is unknown. If the concentration is known, other NIOSH/MSHA approved respiratory protection must be worn.

WHAT TO DO

In the event of an accidental release, evacuate the area immediately. A response into the leak area should only be attempted by trained emergency responders. If it is possible to shut off the source of the leak from a remote area, it should be done. Otherwise, evacuate the area and call for assistance.

WHO TO CALL

CYTEC operates a 24-hour Emergency Response and Incident Management System (ERIM). For emergencies involving spill, leak, fire, exposure or accident call CHEMTREC: 1-800/424-9300. Outside the US or Canada call 703/527-3887.

EMERGENCY RESPONDERS

All emergency responses should be made in level B protection, which includes neoprene, butyl rubber or PVC gloves, Seranex coated Tyvek suit, rubber boots and an air-supplied respirator. Refer to the Application manual for more detailed recommendations for handling, storage, spill and leak procedures.

WARRANTY

Seller warrants that the product conforms to its chemical description and when used according to label directions under normal conditions of use, it is reasonably fit for the purpose stated on the label. Seller makes no other warranty, either expressed or implied, and buyer assumes all risk should the product be used contrary to label instructions.

RESTRICTED USE PESTICIDE

DUE TO ACUTE INHALATION TOXICITY OF HIGHLY TOXIC PHOSPHINE (HYDROGEN PHOSPHIDE, PH₃) GAS

For retail sale to and use only by certified applicators for those uses covered by the applicator's certification or persons trained in accordance with this product manual working under the direct supervision and in the physical presence of the certified applicator. Physical presence means on-site or on the premises. Read and follow the label and the product's Application Manual, which contains complete instructions for the safe use of this pesticide.

ACCEPTED
MAY 17 2002
Under the Federal Insecticide, Fungicide, and Herbicide Act, as amended, for the pesticide registered under EPA Reg. No. 66387-8

APPLICATION MANUAL FOR

VAPORPH₃OS™ Phosphine Fumigant

Pure phosphine gas for use after blending with carbon dioxide in controlling pests in enclosed empty spaces and enclosed space containing stored raw agricultural commodities, processed foods, stored tobacco, animal feeds, and nonfood products. Not for use on barges. This product is the technical grade active ingredient Phosphine and is intended for on-site blending with a registered source of Carbon Dioxide for the production of a non-flammable fumigant gas. Refer to the Application Manual for a list of commodities and pests controlled.

ACTIVE INGREDIENTS: Phosphine Gas By Weight
99.3%



**KEEP OUT OF REACH OF CHILDREN
DANGER - POISON - PELIGRO**



PELIGRO AL USUARIO: Si usted no lee ingles, no use este productor hasta que la etiqueta se le haya sido explicado ampliamente (TO THE USER: If you cannot read English, do not use this product until the label has been fully explained to you.)

I. PRECAUTIONARY STATEMENTS

VAPORPH₃OS™ Phosphine Fumigant is a restricted use product for the retail sale and use only by certified applicators and people under their direct supervision.

A. HAZARDS TO HUMANS AND DOMESTIC ANIMALS

**Keep Out of Reach of Children
DANGER-POISON & PYROPHORIC**

May be fatal if inhaled. Avoid contact with skin and eyes and avoid breathing vapor. Use in well ventilated areas. Keep animals, children and unauthorized persons away from area under treatment until area is shown to be free from Phosphine gas, as indicated by a gas-measuring device. Where the concentration of Phosphine is unknown, a self-contained breathing apparatus (SCBA) with full facepiece and operated in pressure-demand mode must be used.

Do not get in eyes, in nose, on skin or on clothing. Do not eat, drink or smoke while handling VAPORPH₃OS™ Phosphine Fumigant. Phosphine gas may deaden the sense of smell. Do not depend solely on the odor to detect VAPORPH₃OS™ Phosphine Fumigant. Observe proper application, aeration, reentry and dosing procedures specified elsewhere in the labeling to prevent overexposure.

EXPOSURE TO CONCENTRATIONS ABOVE PERMISSIBLE LEVELS MAY CAUSE POISONING.

B. FIRST AID

6/45

Symptoms of exposure to this product are headache, dizziness, nausea, difficult breathing, vomiting and diarrhea. In all cases of overexposure, get medical attention immediately. Take victim to doctor, hospital or emergency treatment facility.

If Inhaled	<ul style="list-style-type: none">▪ Move person to fresh air▪ If person is not breathing, call 911 or an ambulance, and then give artificial respiration, preferably mouth-to-mouth if possible.▪ Call a poison control center or doctor for further treatment advice.
If on Skin	<ul style="list-style-type: none">▪ May cause frostbite to unprotected skin upon contact with dispensing equipment while gas is discharged rapidly.▪ Take off contaminated clothing and allow clothes to aerate in ventilated room prior to laundering.▪ Call a poison control center or doctor for treatment advice.
If in Eyes	<ul style="list-style-type: none">▪ Hold eye open and rinse slowly and gently with cool water for 15-20 minutes in case of freezing or cryogenic "burns." Do not rinse eyes with hot or even tepid water.▪ Remove contact lenses, if present, after the first 5 minutes, then continue rinsing.▪ Call a poison control center or doctor for treatment advice. <p>Never introduce oil or ointment into eyes without medical advice.</p>

SEE SIDE PANEL OF LABEL FOR ADDITIONAL PRECAUTIONARY STATEMENTS

Cytec Industries Inc., West Paterson, NJ 07424 USA

Emergency Phone: 1-800/424-9300 or 703/527-3887

EPA Registration No

EPA Establishment No. 68387-CAN-1

Net Contents: 30.9 lbs.

C. NOTE TO PHYSICIAN – THIS IS PHOSPHINE, IT IS NOT PHOSGENE

VAPORPH₃OS™ must be blended with Carbon Dioxide on site to produce a non-flammable mixture. Mild exposure by inhalation causes malaise (indefinite feeling of sickness), ringing of ears, fatigue, nausea and pressure in chest which are relieved by removal to fresh air. Moderate poisoning causes weakness, vomiting, epigastric pain (pain just above the stomach), chest pain, diarrhea and dyspnea (difficulty in breathing). Symptoms of severe poisoning may occur within a few hours or up to several days, resulting in pulmonary edema (fluid in lungs) and may lead to dizziness, cyanosis (blue or purple skin color), unconsciousness and death.

In sufficient quantity, Phosphine affects the liver, kidneys, lungs, nervous system, and circulatory system. Inhalation can cause lung edema (fluid in lungs) and hyperemia (excess of blood in a body part), small perivascular brain hemorrhages and brain edema (fluid in brain). Ingestion can cause lung and brain symptoms, but damage to the viscera (body cavity organs) is more common. Phosphine poisoning may result in (1) pulmonary edema, (2) liver elevated serum GOT, LDH and alkaline phosphatase, reduced prothrombin, hemorrhage and jaundice (yellow skin color) and (3) kidney hematuria (blood in urine) and anuria (abnormal or lack of urination). Pathology is characteristic of hypoxia (oxygen deficiency in body tissue). Frequent exposure over a period of days or weeks may cause poisoning. Treatment is symptomatic.

The following measures are suggested for use by the physician in accordance with the physician's own judgment:

1. Exposure of skin to rapidly evaporating liquid may cause cryogenic "burn." Treat the "burn" in a similar manner as a thermal burn.
2. In case of freezing or cryogenic "burns" to eyes by rapidly evaporating liquid, RINSE EYES WITH COOL WATER. Do not rinse eyes with hot or even tepid water.

7/45

3. In its milder to moderate forms (symptoms of poisoning may take up to 24 hours to make their appearance), the following is suggested:
 - a) Complete rest 1-2 days during which the patient must be kept quiet and warm.
 - b) If the patient suffers from vomiting or increased blood sugar, appropriate solutions should be administered. Treatment with oxygen is recommended, as is the administration of cardiac and circulatory stimulants.
4. In cases of severe poisoning (intensive care unit recommended):
 - a) Where pulmonary edema is observed, steroid therapy should be considered and close medical supervision is recommended. Blood transfusions may be necessary.
 - b) In case of manifest pulmonary edema, venesection should be performed under vein pressure control. Heart glycosides (I.V.) can be used in case of hemoconcentration. Venesection may result in shock. In the case of progressive edema of the lungs, immediately intubate and remove edema fluid and administer oxygen over-pressure respiration, as well as any measures required for shock treatment. In case of kidney failure, extracorporeal hemodialysis is necessary. There is no specific antidote known for this poisoning.

D. ENVIRONMENTAL HAZARDS

Phosphine is highly toxic to fish and wildlife. Exposure to non-target organisms should be avoided.

E. PHYSICAL AND CHEMICAL HAZARDS

Phosphine may ignite spontaneously at levels above its lower flammability limit of 1.8% v/v (18,000 ppm) in air. It is important not to exceed this concentration. Ignition of high concentration of Phosphine can produce a very energetic reaction. Explosions can occur under these conditions and may cause severe personal injury.

Never allow the buildup of Phosphine to exceed explosive concentrations. When Phosphine is blended with Carbon Dioxide the lower flammability limit is raised to 3% v/v.

Contents under pressure. Do not use or store near heat or open flame. Do not puncture or incinerate container. Exposure to temperatures above 130°F may cause bursting. Do not drop the container.

Never open cylinder in a confined space without an SCBA with full facepiece operated in pressure-demand mode. Never enter a space under fumigation with VAPORPH₃OS™ Phosphine Fumigant without first checking the gas concentration levels and wearing the appropriate breathing apparatus. Phosphine gas has a low solubility in water and oils and is stable at normal fumigation temperatures. However, it may react with certain metals and cause corrosion, especially at higher temperatures and relative humidities. Metals such as copper, brass and other copper alloys, and precious metals such as gold and silver are susceptible to corrosion. Thus, small electric motors, smoke detectors, brass sprinkler heads, batteries and battery chargers, fork lifts, temperature monitoring systems, switching gears, communication devices, computers, calculators and other electronic or electrical equipment should be protected or removed before fumigation. In most cases all electronic equipment must be removed. Phosphine gas will also react with certain metallic salts and therefore, sensitive items such as photographic film, some inorganic pigments, etc., should not be exposed. Under high vacuum conditions, Phosphine gas may cause an explosive hazard. Do not apply fumigant in vacuum chambers.

8/45
AN APPROVED LABEL AND AN APPLICATION MANUAL ACCOMPANY THIS PRODUCT. READ THE ENTIRE LABEL AND APPLICATION MANUAL BEFORE USE. ALL PARTS OF THE LABEL AND APPLICATION MANUAL ARE EQUALLY IMPORTANT FOR SAFE AND EFFECTIVE USE OF THIS PRODUCT. CALL CYTEC INDUSTRIES INC. IF YOU HAVE ANY QUESTIONS OR DO NOT UNDERSTAND ANY PART OF THE PRODUCT LABEL OR APPLICATION MANUAL.

REFER TO THE APPLICATION MANUAL FOR DETAILED PRECAUTIONS, RECOMMENDATIONS AND DIRECTIONS FOR USE.

WARRANTY

Seller warrants that the product conforms to its chemical description and when used according to label directions under normal conditions of use, it is reasonably fit for the purpose stated on the label. Seller makes no other warranty, either expressed or implied, and buyer assumes all risk should the product be used contrary to label instructions.

[Rev. 4/12/2002]

APPLICATION MANUAL

For

VAPORPH₃OS™ Phosphine Fumigant

TABLE OF CONTENTS

- I. PRECAUTIONARY STATEMENTS.....Error! Bookmark not defined.
 - A. HAZARDS TO HUMANS AND DOMESTIC ANIMALS 12
 - B. FIRST AID..... Error! Bookmark not defined.
 - C. NOTE TO PHYSICIAN – THIS IS PHOSPHINE, IT IS NOT PHOSGENE..... Error! Bookmark not defined.
 - D. ENVIRONMENTAL HAZARDS..... Error! Bookmark not defined.
 - E. PHYSICAL AND CHEMICAL HAZARDS Error! Bookmark not defined.
- II. INTRODUCTION8
 - A. PRODUCT DESCRIPTION 8
 - B. PRODUCT PACKAGING..... 8
 - 1. Packaging 8
 - 2. Blending Equipment..... 9
 - C. PHOSPHINE AND CARBON DIOXIDE..... 10
 - D. ENVIRONMENTAL FATE 11
- III. SAFETY REQUIREMENTS 11
 - A. GENERAL 11
 - B. SECURING CYLINDERS 12
 - C. POISON GAS HAZARDS – LEAK DETECTION AND REPAIR..... 10
 - 1. Blending Equipment..... 10
 - 2. Storage Structures 13
 - D. COMPRESSED GAS HAZARDS 11
 - 1. Gas Discharge..... 11
 - 2. Temperature 11
 - 3. Residual Pressure..... 14
 - 4. Liquid Expansion 14
- IV. DIRECTIONS FOR USE 14
 - A. GENERAL 14
 - B. EFFICACY..... 15
 - C. USE PATTERN 15
 - 1. Pests:..... 15
 - 2. Commodities: 15
 - a. Raw Agricultural Commodities 16
 - b. Processed Foods..... 16
 - c. Animal Feed and Feed Ingredients 17
 - d. Nonfood Commodities Including Tobacco 17
 - D. DOSAGE GUIDE 17
 - E. EXPOSURE GUIDELINES 18
 - F. SEALING..... 18
 - G. APPLICATION PROCEDURES 19
 - 1. General Statement 19
 - 2. Equipment Specification and Use 19

- a. General.....19
- b. Unapproved Dispensing Methods.....19
- c. Approved Blending Methods.....19
- d. Calculating the Amount of VAPORPH₃OS™ Phosphine Fumigant Required.....19
- e. Troubleshooting.....21
- 3. Application to Bulk Commodities22
 - a. General.....22
 - b. Procedure for Fumigating Bulk Commodities.....22
- 4. Application to Space Fumigations24
 - a. General.....24
 - b. Procedure for Fumigating Spaces.....24
- 5. Application to Tarpaulin Fumigations.....25
 - a. General.....25
 - b. Procedure for Tarpaulin Fumigations.....25
- 6. Application to Containers and Trailers27
 - a. General.....27
 - b. Procedure for Container and Trailer Fumigation.....27
- 7. Application to Ships.....28
 - a. General.....28
 - b. Prevoyage Fumigation Procedures.....28
 - c. Application Procedures for Bulk Dry Cargo Vessels and Tankers.....29
 - d. In-Transit fumigation of Transportation Units (Containers) Aboard Ships.....29
 - e. Precautions and Procedures During Voyage.....29
 - f. Precautions and Procedures During Discharge.....30
- V. PERSONAL PROTECTIVE EQUIPMENT (PPE)30**
 - A. GLOVES.....30
 - B. SAFETY GLASSES.....30
 - C. SAFETY SHOES.....30
 - D. HAND TRUCKS.....30
 - E. RESPIRATORS.....30
 - 1. When Respiratory Protection Must Be Worn.....30
 - 2. Permissible Gas Concentration Ranges For Respiratory Protection Devices.....31
 - 3. Requirements For Availability of Respiratory Protection.....31
- VI. PLACARDING OF FUMIGATED AREAS.....31**
- VII. GAS DETECTION EQUIPMENT.....32**
- VIII. AERATION OF FUMIGATED COMMODITIES.....32**
 - A. AUTHORIZED TRAINING FOR AERATION AT FUMIGATION SITES
 - B. FOODS AND FEEDS32
 - C. NON-FOOD COMMODITIES.....32
 - D. TOBACCO.....33
- IX. APPLICATOR AND WORKER EXPOSURE.....33**
 - A. PHOSPHINE EXPOSURE LIMITS.....33
 - B. CARBON DIOXIDE EXPOSURE LIMITS.....33
 - C. APPLICATION OF FUMIGANT.....33
 - D. LEAKAGE FROM FUMIGATED SITES.....33
 - E. AERATION AND REENTRY.....33
 - F. HANDLING UNAERATED COMMODITIES.....34
 - G. INDUSTRIAL HYGIENE MONITORING.....34
 - H. ENGINEERING CONTROLS AND WORK PRACTICES.....34
- X. SAFE HANDLING OF COMPRESSED GASES IN CONTAINERS.....34**
- XI. STORAGE OF CYLINDERS.....36**
 - A. GENERAL.....36
 - B. EMERGENCY RESPONSE PLAN.....36
 - C. INDOOR STORAGE.....36
 - D. OUTDOOR STORAGE.....36

E. TEMPERATURE LIMITATIONS 37

F. SECURING CYLINDERS 37

G. LABELLING OF STORAGE 37

XII. TRANSPORT 38

 A. GENERAL 38

 B. TRANSPORT DESIGNATIONS 38

 C. TRANSPORT REQUIREMENTS 38

 1. Package Preparation 38

 2. Cylinder Contents 38

 3. Documents 38

 4. Vehicle Loading 39

 5. Vehicle Markings 39

 6. Use of Common Carriers 39

 7. Driver Qualifications 39

XIII. DISPOSAL 39

XIV. SPILL AND LEAK PROCEDURES 39

 A. GENERAL 39

 B. WHAT TO DO 39

 C. WHO TO CALL 40

 D. EMERGENCY RESPONDERS 40

II. INTRODUCTION

A. PRODUCT DESCRIPTION

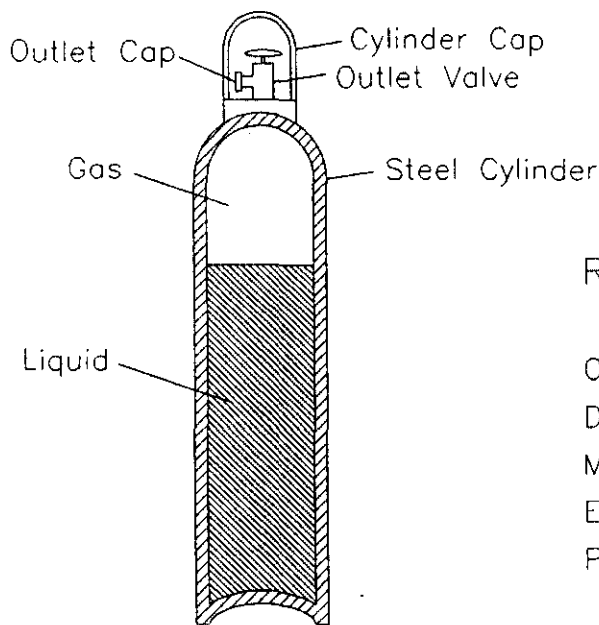
VAPORPH₃OS™ Phosphine Fumigant is a cylinderized source of Phosphine gas and is packaged in high-pressure gas cylinders. VAPORPH₃OS™ Phosphine Fumigant cylinders contain 99.3% wt Phosphine as liquefied gas under pressure. Phosphine is pyrophoric and will spontaneously ignite in air. With the use of proper equipment VAPORPH₃OS™ can be safely blended with Carbon Dioxide to less than 3% vol. to eliminate the flammability hazard.

Phosphine, under sufficient pressure, can exist in a liquid state. It is this “liquefied gas” that is stored in the cylinder. The product is dispensed as a gas from the cylinder and blended with Carbon Dioxide. The final blend is similar to ECO₂FUME® Fumigant Gas. ECO₂FUME® Fumigant Gas is the preblended mixture of 2% wt Phosphine in 98% wt Carbon Dioxide. The on-site blending of VAPORPH₃OS™ and CO₂ greatly reduces the number of cylinders that are required. In expanding from a liquid to a gas, it increases in volume by hundreds of times. Proper dispensing equipment is necessary to ensure a safe and effective fumigation.

Unlike metallic phosphide fumigants, Phosphine is not generated through a chemical reaction and its release is instantaneous. The choice of dispensing methods will depend on the type and duration of the fumigation planned.

B. PRODUCT PACKAGING

1. Packaging



Representative Package

- Overall Height: 60 inches (1.52 m)
- Diameter: 9 1/4 inches (23.5 cm)
- Material: Steel
- Empty Weight: 138 pounds (62.6 kg)
- Product Weight: 30.9 pounds (14.0 kg)

VAPORPH₃OS™
Fumigant Gas

VAPORPH₃OS™ Phosphine Fumigant is packaged in a steel compressed gas cylinder, designed, manufactured, maintained and filled in compliance with regulations established by the United States Department of Transportation (DOT). The product flows to the blending equipment through the cylinder outlet valve. As gas is withdrawn from the cylinder, some of the product vaporizes to fill the remaining space in the cylinder. Through this vaporization, the cylinder pressure is maintained.

The valve outlet fitting is a CGA350, which was established by the Compressed Gas Association (CGA). The valve outlet is protected by a threaded gas-tight outlet cap, which must be secured whenever the cylinder is not in use. Attach only CYTEC provided (or approved) blending equipment to the cylinder valve outlet to dispense VAPORPH₃OS™ Phosphine Fumigant at the time of fumigation. Use of any other blending equipment is prohibited.

Most compressed gas cylinder valves are equipped with a safety device that releases the cylinder contents due to fire exposure or overpressurization. Because VAPORPH₃OS™ Phosphine Fumigant is a poisonous gas, DOT regulations prohibit the use of such a device.

Each cylinder is supplied with a cylinder cap, which is designed to protect the outlet valve. This cap must be secured whenever a cylinder is not in use. It is unlawful to transport a VAPORPH₃OS™ Phosphine Fumigant gas cylinder without the valve outlet cap and the cylinder cap securely in place.

VAPORPH₃OS™ Phosphine Fumigant gas cylinders can only be refilled through authorized distributors. They can be filled countless times within a five-year period. Every five years, however, the cylinder is required by law to be tested by a qualified facility.

2. Blending Equipment

Fumigant grade Phosphine gas (VAPORPH₃OS™) from high pressure cylinders flows into the blender unit where it combines with Carbon Dioxide gas sourced from bulk storage, mobile bulk truck, semi-bulk or cylinders.

Various models of on-site blending equipment have been designed, built and tested. All of the designs have incorporated engineering safeguards to ensure that the blended product is a non-flammable mixture.

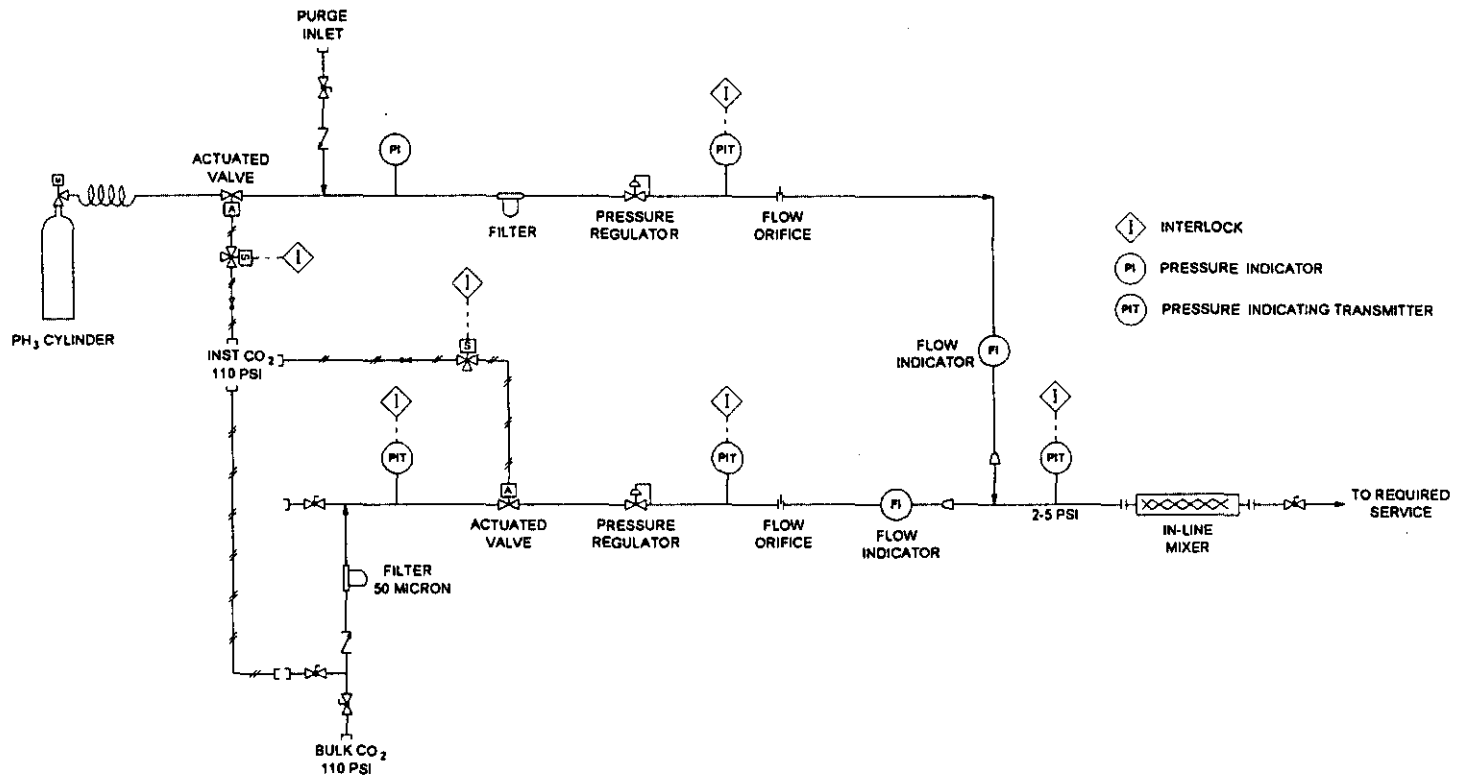
One design (see diagram below) uses a pressure regulator and flow control orifice on both the VAPORPH₃OS™ and CO₂ gases to control the flow rate and properly blend VAPORPH₃OS™ with Carbon Dioxide. The size of each orifice is engineered for a specific fixed flow rate and therefore the blending rate cannot be adjusted. By controlling the pressure drop across the orifice plates, the Phosphine concentration can be controlled around 2.5% vol. Engineering controls have been designed into the blending units that will prevent the Phosphine concentration from going outside the range of 2.0 – 2.9% vol (1.6 – 2.2% wt).

A more sophisticated design uses mass meters, control valves and the electronics to allow an adjustable blending rate while maintaining the proper blend of Phosphine. Engineering controls have been designed into the blending units that will prevent the Phosphine concentration from going outside the range of 2.0 – 2.9% vol (1.6 – 2.2% wt). Mass meters are employed in the design, therefore, the concentration can be precisely controlled to 2.6% vol (2.0% wt). The product from this equipment is equivalent to ECO₂FUME® fumigant gas.

Blending equipment is intended for use at large facilities that have on-site CO₂ bulk storage and vaporizing equipment, or at facilities where it is feasible to bring in bulk CO₂ and vaporizing equipment for the fumigation. The blending equipment is designed for use only with Carbon Dioxide gas, therefore, a bulk supply of liquid CO₂ must be equipped with suitable vaporizing equipment. Contact Cytec Industries Inc. for blending equipment design specifications and recommendations. For smaller fumigation jobs, it is recommended that pre-blended ECO₂FUME® cylinders be used.

14/45

DIAGRAM OF A REPRESENTATIVE TYPE OF VAPORPH₃OS™ BLENDING EQUIPMENT



C. PHOSPHINE AND CARBON DIOXIDE

PHOSPHINE

Phosphine is a colorless gas, which is toxic to insects, humans and other forms of animal life. It is very mobile with a high vapor pressure. Thus, the penetrating capability of Phosphine is great. The combination of high molecular activity, vapor pressure and toxicity to insects at low dosages accounts for its wide acceptance as a fumigant.

Phosphine may ignite spontaneously at levels above its lower flammability limit of 1.8% v/v (18,000 ppm) in air. It is important not to exceed this concentration. Ignition of high concentration of Phosphine can produce a very energetic reaction. Explosions can occur under these conditions and may cause severe personal injury.

Never allow the buildup of Phosphine to exceed explosive concentrations. When Phosphine is blended with Carbon Dioxide the lower flammability limit is raised to 3% v/v.

CARBON DIOXIDE

Any registered source of carbon dioxide may be used with VAPORPH₃OS™. Carbon dioxide is colorless, non-flammable gas, which at elevated concentrations is toxic. For worker safety, the monitoring for carbon dioxide and Phosphine gas is required and suitable breathing apparatus used. Sometimes Phosphine may have an odor due to the presence of impurities in the product; however, this odor cannot always be relied upon as an adequate indicator of Phosphine exposure.

Carbon Dioxide gas is an asphyxiant. Concentrations of 10% or more can produce unconsciousness or death in 1 minute or less.

VAPORPH₃OS™ cannot be blended with any unregistered carbon dioxide products. Follow all label directions for the most restrictive of label limitations and precautions. Consult the carbon dioxide product label for appropriate use, storage and disposal instructions and restrictions.

****VAPORPH₃OS™ Phosphine Fumigant *does not have an expiration date.* Contact Cytec Industries Inc. for any questions ****

D. ENVIRONMENTAL FATE

VAPORPH₃OS™ is blended on-site into a non-flammable mixture. The environmental fate is effected by being dispersed, diluted and decomposed in ambient air after aeration from fumigated commodities where it is present in rapidly decaying low concentrations that are oxidized to non-toxic degradation products.

On airing the commodity after fumigation the volatile gaseous Phosphine is dispersed to the atmosphere where it decomposes. On irradiation with UV-light, Phosphine reacts with the oxygen in the atmosphere in the presence of water vapor to produce traces of H₃PO₄ (phosphoric acid). Phosphine is only moderately soluble in water, 26 cc in 100 cc of water at 17° C, in which it gradually decomposes into phosphorus, hydrogen, and the lower hydrides of phosphorus.

III. SAFETY REQUIREMENTS

VAPORPH₃OS™ Phosphine Fumigant is a restricted use product for retail sale and use only by certified applicators and people under their direct supervision.

A. GENERAL

1. Carefully read the label and Application Manual and follow instructions explicitly.
2. Never work alone when applying fumigant from within the storage structure or aerating commodities after the fumigation is over.
3. Never allow untrained personnel to handle VAPORPH₃OS™ Phosphine Fumigant.
4. A NIOSH approved self-contained breathing apparatus (SCBA) with full facepiece and operated in pressure-demand mode must be worn in confined spaces and in fumigation structures.

- 16/15
5. Post VAPORPH₃OS™ Phosphine Fumigant fumigation placards on fumigated areas, including all entrances/ exits. See Section VI for specific wording that must appear on these placards. Ensure that no personnel are inside any of the structures to be fumigated prior to initiating fumigation.
 6. Notify appropriate owners, employees, and/or operators at the facility where the fumigation will occur and provide relevant safety, health, and environmental information to local fire and rescue officials annually for use in the event of an emergency.
 7. Worker exposure to Phosphine must not exceed the 8-hour Time-Weighted Average (TWA) of 0.3 ppm during application or a maximum concentration of 0.3 ppm after application is completed. This includes reentry into a structure.
 8. Worker exposure to carbon dioxide must not exceed the Threshold Limit Value (TLV) of 5,000 ppm (0.5 % by volume) at any time, either during or after application.
 9. Workers required to use SCBA should be assessed for impaired pulmonary function prior to initial use and at least annually thereafter. Any employees found to have impaired pulmonary function should be referred for medical attention.
 10. Protect or remove materials containing metals such as copper, silver, gold and their alloys and salts from corrosive exposure to Phosphine.
 11. Do not connect cylinders to blending equipment until all fumigation notice placards have been posted and the space to be fumigated is clear and secured.
 12. Wear protective clothing as described in Section V. Respiratory protection requirements are also discussed in Section V.
 13. The perimeter of the fumigation area, especially downwind, must be monitored to ensure that Phosphine and carbon dioxide concentrations are kept within acceptable levels outside the fumigation area. Large leaks must be repaired to minimize loss of fumigant and reduce risk of exposure to bystanders and/or occupants of nearby buildings.

B. SECURING CYLINDERS

Cylinders must be secured upright at all times to prevent their being inadvertently knocked over. When cylinder is not connected to dispensing equipment, the valve cap and cylinder cap must be securely installed.

C. POISON GAS HAZARDS – LEAK DETECTION AND REPAIR

Because VAPORPH₃OS™ is a poisonous gas, care must be taken to avoid direct exposure. Appropriate procedures must be followed to detect and repair leaks in blending equipment and structures. These are discussed below. Also, see section XIV. of this manual, “SPILL AND LEAK PROCEDURES.”

1. Blending Equipment

Although the blending equipment is designed to contain the gas, small leaks can occur. A Phosphine detector must be used at the beginning of each application to check the integrity of the equipment and any leaks must be corrected immediately. Carbon dioxide should be used to pressurize and leak-check equipment with soap solution prior to use in the field.

If any leak is encountered while using VAPORPH₃OS™ Phosphine Fumigant clear the immediate area of all personnel.

Only persons who are wearing a self-contained breathing apparatus (SCBA) with full facepiece and operated in pressure-demand mode or its equivalent are permitted in the area to address the leak. Once the leak has been stopped, the area must be thoroughly ventilated and the air tested with a Phosphine detector. Only after the Phosphine level has dropped below the eight-hour TWA of 0.3 ppm or the STEL of 1 ppm for 15 minutes, or the Carbon Dioxide concentration is less than the TWA of 5000 ppm or the STEL of 30,000 ppm, are unprotected personnel permitted to enter.

If a cylinder leak is detected, refer to section IV.G.2.e. of this manual for guidance on troubleshooting. Further troubleshooting assistance for a particular piece of blending equipment is addressed in the respective equipment manual.

2. Storage Structures

To reduce the potential for leakage, careful attention should be given to inspection of the storage structure and proper sealing prior to fumigation. Refer to the DIRECTIONS FOR USE, sections IV A. ("GENERAL") and IV F. ("SEALING") in this manual, for related guidance.

The perimeter of the fumigation area, especially downwind and in adjacent or nearby buildings, must be monitored to ensure that Phosphine and carbon dioxide concentrations are kept within acceptable levels outside the fumigation area. This involves walking around the structure with a personal monitoring device to determine whether excessive amounts of fumigant are escaping.

If a high level of Phosphine is detected outside the fumigation area, the addition of fumigant must be stopped. Large leaks must be repaired to minimize loss of fumigant and reduce risk of exposure to bystanders and/or occupants of nearby buildings. Appropriate personal protective equipment must be worn when sealing leaks. These repairs must be made from the exterior of the structure whenever possible. If it is necessary to seal a leak from the interior of the structure, the applicator must follow all proper procedures for confined space entry including wearing SCBA with full facepiece and operated in pressure-demand mode.

D. COMPRESSED GAS HAZARDS

VAPORPH₃OS™ Phosphine Fumigant cylinders and blending equipment can achieve pressures of over 1000 pounds per square inch. Because of this high pressure, care must be taken to avoid unintentional releases of the product.

1. Gas Discharge

The release of high-pressure gas can be forceful and there is potential for personal injury. High-speed discharge from unsecured flexible components such as hoses or tubing can result in a whipping action. The gas released can also propel small objects in the area. Such airborne objects can injure the eyes and bodies of people in the area.

2. Temperature

The rapid discharge of VAPORPH₃OS™ Phosphine Fumigant through blending equipment will result in a chilling effect on parts of the equipment and cylinders. This thermodynamic effect can create temperatures low enough

to cause frostbite if touched by unprotected skin. While this chilling is typically evidenced by the formation of ice on the equipment and cylinders, the cold hazard may exist without the formation of ice.

3. Residual Pressure

The chilling of cylinders is the result of the liquefied gas boiling to maintain the pressure in the gas space of the cylinder.

When the cylinder is allowed to warm, the pressure in the cylinder may rise accordingly. For this reason, all cylinders must be treated as if they contain high-pressure gas. Cylinder valves should always be closed before disconnecting the blending equipment.

Prior to the dismantling of VAPORPH₃OS™ Phosphine Fumigant blending equipment at the conclusion of fumigation, all residual gas in the equipment should be vented to atmospheric pressure. The cylinder valve should be closed and the remaining product within the supply line discharged through the dispensing equipment. Cylinders should not be disconnected before ensuring that the line is fully vented and purged.

4. Liquid Expansion

VAPORPH₃OS™ blending equipment is only designed to blend gas. Never invert the cylinder or lay the cylinder down when dispensing the gas. This may result in liquid product flowing into the blending equipment. Always ensure the cylinder is secured in an upright position.

IV. DIRECTIONS FOR USE

A. GENERAL

1. **It is a violation of federal law to use this product in a manner inconsistent with its labeling.** VAPORPH₃OS™ Phosphine Fumigant is a Restricted Use Pesticide due to the acute inhalation toxicity of Phosphine, PH₃ gas. For retail sale to and use only by certified applicators for those uses covered by the applicator's certification or persons trained in accordance with this product manual working under the direct supervision and in the physical presence of certified applicators. Physical presence means on-site or on the premises.
2. VAPORPH₃OS™ Phosphine Fumigant is a hazardous material and may be used only by individuals trained in its proper use. The trained individuals must be certified applicators or persons working under their direct supervision and in their physical presence (i.e., on the premises within visual and/or voice contact. Before using, read and follow the label precautions and directions on the label and in the VAPORPH₃OS™ Phosphine Fumigant Application Manual.
3. At least two Certified Applicators must be present during reentry into a fumigated or partially aerated site. One applicator should serve as an observer while the other enters the facility. The second applicator should not enter the facility and should seek help in the event of an emergency.
4. Prior to applying this product, the storage structure must be inspected to determine if it can be made sufficiently gas tight. The storage structure should be sealed so as to maintain a suitable gas concentration over the time period required for control of insects. Personal exposure monitoring should be conducted by use of personal electronic monitors or low level detection tubes, as appropriate. Notify

appropriate owners, employees, and/or operators at the facility where the fumigation will occur, and provide relevant safety, health and environmental information to local fire and rescue officials annually for use in the event of an emergency. For additional information consult the manufacturer manuals and training information about safe and effective use of VAPORPH₃OS™ Phosphine Fumigant.

- 5. Do not apply VAPORPH₃OS™ Phosphine Fumigant in vacuum chambers.
- 6. Protect or remove copper, silver, gold and their alloys from corrosive exposure to Phosphine.

B. EFFICACY

Complete control of listed pests may not always be achieved. Factors contributing to less than 100% control include gas leakage, poor gas distribution, unfavorable exposure conditions, etc. In addition, some insects are less susceptible to Phosphine than others. To maximize control, extreme care must be observed in sealing, higher dosages must be used, exposure periods must be lengthened, proper application procedures must be followed, and temperature and humidity must be favorable.

C. USE PATTERN

1. Pests

VAPORPH₃OS™ Phosphine Fumigant will control the following pests:

Insect Pests, including:

Almond Moth	Angoumois Grain Moth	Bean Weevil
Cadelle	Carpet Beetle	Cereal Leaf Beetle
Cigarette Beetle	Confused Flour Beetle	Dermeid Beetle
Dried Fruit Beetle	Dried Fruit Moth	European Grain Moth
Flat Grain Beetle	Fruit Fly	Granary Weevil
Greater Wax Moth	Hairy Fungus Beetle	Hessian Fly
Khapra Beetle	Indian Meal Moth	Lesser Grain Borer
Maize Weevil	Mediterranean Flour Moth	Pea Weevil
Pink Bollworm	Raisin Moth	Red Flour Beetle
Rice Weevil	Rusty Grain Beetle	Saw-toothed Grain Beetle
Spider Beetle	Tobacco Moth	Warehouse Beetle
Yellow Meal Worm	Africanized and honeybee infested with tracheal mites	

2. Commodities

The following food commodities can be fumigated with VAPORPH₃OS™ Phosphine Fumigant:

a. Raw Agricultural Commodities

Almonds	Alfalfa	Avocado
Banana (includes Plantains)	Barley	Brazil Nuts
Cabbage, Chinese	Cashews	Citrus Citron
Cocoa Beans	Coffee Beans	Corn
Cottonseed	Dates	Dill
Eggplant	Endive	Filberts
Flower Seed	Grapefruit	Grass Seed
Kumquat	Lemon	Lettuce
Lime	Mango	Millet
Oats	Okra	Orange
Papaya	Peanuts	Pecans
Pepper	Persimmon	Pimento
Pistachio Nuts	Popcorn	Rice
Rye	Safflower Seed	Salsify Tops
Sesame Seed	Sorghum	Soybeans
Sunflower Seeds	Sweet Potato	Tangelo
Tangerine	Tomato	Triticale
Walnuts	Wheat	Legume Vegetables (succulent or dried)

b. Processed Foods

The listed processed foods may be fumigated with VAPORPH₃OS™ Phosphine Fumigant.

- Processed candy and sugar
- Cereal flours and bakery mixes
- Cereal foods (including cookies, crackers, macaroni, noodles, pasta, pretzels, snack foods and spaghetti)
- Processed cereals (including milled fractions and packaged cereals)
- Cheese and cheese by-products
- Chocolate and chocolate products (such as assorted chocolate, chocolate liquor, cocoa, cocoa powder, dark chocolate coating and milk chocolate)
- Processed coffee
- Corn grits
- Cured, dried and processed meat products and dried fish
- Dates
- Dried eggs and egg yolk solids
- Dried milk, dried powdered milk, nondairy creamers, and nonfat dried milk
- Dried or dehydrated fruits (such as apples, dates, figs, peaches, pears, prunes, raisins and sultanas)
- Dried and dehydrated vegetables (such as beans, carrots, lentils, peas, potato flour, potato products and spinach)
- Figs
- Malt
- Peanuts
- Processed herbs, spices, seasonings and condiments

- Processed nuts (almonds, apricot kernels, Brazil nuts, cashews, filberts, peanuts, pecans, pistachio nuts, walnuts and other processed nuts)
- Processed oats (including oatmeal)
- Rice (brewers rice grits, enriched and polished, wild rice)
- Soybean flour and milled fractions
- Processed tea
- Yeast (including primary yeast)
- Wild rice

c. *Animal Feed and Feed Ingredients*

All animal feed and feed ingredients.

d. *Nonfood Commodities Including Tobacco*

The listed nonfood items may be fumigated with VAPORPH₃OS™ Phosphine Fumigant:

- Animal hide
Processed or unprocessed cotton, wool and other natural fibers or cloth
- Clothing, feathers, furs, human hair, rubberized hair, vulcanized hair, mohair
- Leather products
- Tobacco
- Wood, cut trees, wood chips and wood and bamboo products
- Paper and paper products
- Non-food flour
- Dunnage
- Non-food starch
- Dried plants and flowers
- Seeds (grass seed, ornamental herbaceous plant seed, and vegetable seed)
- Straw or hay
- Psyllium seed and psyllium seed husks*
- *Psyllium seed and Psyllium seed husks destined for shipment to pharmaceutical manufacturers may be fumigated. Such dedicated lots may be fumigated in transport vehicles (truck trailers, railcars and containers) prior to shipment. In addition, psyllium seed and husks may be fumigated at other locations only under direct instructions from the pharmaceutical company.

D. DOSAGE GUIDE

RECOMMENDED DOSAGES VAPORPH₃OS™ PHOSPHINE FUMIGANT:

PHOSPHINE

<u>Temperature</u>		<u>Concentration Maintained</u>	<u>Duration</u>
Below 32°F	(0°C)	Do Not Fumigate	Do Not Fumigate
32 – 39°F	(0 – 4°C)	200 – 500 ppm	6 – 14 days
40 – 53°F	(5 – 12°C)	200 – 500 ppm	4 – 10 days
54 – 59°F	(12 – 15°C)	200 – 500 ppm	3 – 5 days
60°F & above	(16°C)	200 – 500 ppm	2 – 3 days

E. EXPOSURE GUIDELINES

The above table may be used as a guide in determining the minimum length of the exposure at the indicated temperatures. These are the temperatures found within the immediate surroundings of the target pest (cold walls, center of grain mass, etc.). For example, this means that 200 parts per million of Phosphine from VAPORPH₃OS™ Phosphine Fumigant is necessary for 2-3 days at 60-68° F at the location of the pest insect. This does not mean the ambient temperature the fumigator is experiencing but the localized concentration and temperature next to the pest insects.

Some insect species and life stages are harder to kill than others. It is important that you know and understand your target pest(s). For example, overwintering dormant larva may be more difficult to kill than an active larva of the same species. Use the maximum duration on the above table when possible. Insects, in general, are more difficult to control at lower temperatures because their respiration is slower.

Certain stored product insects are more tolerant and harder to kill. Here is a partial list of those insect species: Rice weevil, Granary weevil, Maize weevil (*Sitophilus* spp.), Lesser grain borer (*Rhyzopertha dominica*), Warehouse beetle (*Trogoderma* spp.), Carpet beetle (*Attagenus/Anthrenus* spp.), Cigarette beetle (*Lasioderma serricornis*). Consequently, exposure periods recommended in the table are minimum periods and may not be adequate to control all stages of stored product pests under all conditions. This is particularly true at lower temperatures (below 60 degrees F) due to the lower activity and respiration levels of insects.

Fumigators also should be aware that different types of packaging will influence the penetration rate of the gas. Selection of appropriate exposure should be considered accordingly.

The key to a successful fumigation remains with correct dosage, adequate exposure periods, proper application procedures and well-sealed enclosures.

F. SEALING

Good sealing is necessary for an effective fumigation. Turn off all ventilation, supply air, air conditioning, and any other air moving systems which could negatively effect the fumigation. Thoroughly inspect the fumigation chamber/area and seal all cracks, holes and openings. These areas could include, but are not limited to: windows, doors, vents, chimneys and structural flaws. Sealing techniques can vary, but most often include polyethylene sheeting, adhesive tapes and adhesive sprays. Expandable foam or caulking material can work well on structural flaws. Proper sealing will insure sufficient gas levels within the fumigated area and will decrease the chance of unwanted exposure outside of the fumigated area.

As with all fumigations, perimeter monitoring for leaks and potential exposures is required. If a high level of Phosphine is detected outside the structure, the addition of fumigant must be stopped. Using the proper protective equipment, the applicator must attempt to seal the leak from the exterior of the structure. Failing this, the applicator must follow all proper procedures for confined space entry including wearing SCBA with full facepiece and operated in pressure-demand mode, and seal the leak from the interior. At times the applicator may find that all the calculated amount of fumigant has been added, however the target concentration has not been reached. In this case, the fumigator must first check the calculations. It is possible the Phosphine concentration is localized and has not had enough time to disperse evenly. Continue to monitor the inside concentration while checking for leaks as above. All structures will leak to some degree. Large leaks must be repaired to minimize loss of fumigant to the environment and reduce risk of potential exposure to personnel. Fence-line concentrations must never be allowed to exceed the TLV of 0.3 ppm.

Do not fumigate a structure that is connected to other occupied structures. All people must be removed from structures connected to fumigated structures.

G. APPLICATION PROCEDURES

1. General Statement

The following instructions are intended to provide general guidelines for typical fumigation. There are a number of critical factors involved in the design of blending equipment. As such, blending equipment must meet both high-pressure standards and chemical compatibility requirements. Improper or inappropriate use of blending equipment may result in severe injury or death. Application inconsistent with the labeling and Application Manual is a violation of Federal law. Buyer assumes all risk should the product be used contrary to label or Application Manual instructions.

2. Equipment Specification and Use

a. General

The equipment used to blend VAPORPH₃OS™ on site with CO₂ into a non-flammable gas mixture provides a means of containing the gas during the application and controlling the release of the product into the desired space. While some blending equipment has been developed and used to date, they cannot be expected to cover all possible fumigation scenarios. The development of suitable blending equipment is an ongoing process, based on the needs of the users and available technology.

The design of blending equipment must account for a number of technical issues, including pressure rating, material compatibility, temperature limitations, operator safety, and controlling the Phosphine concentration between 2.0 – 2.9% vol. For this reason, only appropriate equipment should be used in the blending of VAPORPH₃OS™ Phosphine Fumigant. Only persons trained in the proper use of VAPORPH₃OS™ Phosphine Fumigant and the blending equipment shall be permitted to use VAPORPH₃OS™ Phosphine Fumigant for fumigation.

The instruction materials provided with the blending equipment should be consulted for its proper use and maintenance.

b. Unapproved Dispensing Methods

It has been common practice, with other cylinderized fumigants, to place the cylinder in the space to be fumigated and the cylinder outlet valve opened to allow the fumigant to release. This is not an approved dispensing method and should not be used with VAPORPH₃OS™ Phosphine Fumigant. VAPORPH₃OS™ Phosphine Fumigant is pyrophoric and will spontaneously ignite in air. VAPORPH₃OS™ must be properly blended with Carbon Dioxide to eliminate the flammability hazard.

c. Approved Blending Methods

VAPORPH₃OS™ and approved blending equipment is generally used for large fumigations that would otherwise require the use of multiple ECO₂FUME® preblended cylinders. Some facilities may have bulk Carbon Dioxide storage tanks on site.

The approved blending equipment has incorporated required safety features to properly blend Phosphine and Carbon Dioxide into a non-flammable mixture with a Phosphine concentration between 2.0 – 2.9% vol.

d. **Calculating the Amount of VAPORPH₃OS™ Phosphine Fumigant Required**

The amount of VAPORPH₃OS™ Phosphine Fumigant and CO₂ required to perform a fumigation will depend on the tightness of the space to be treated, and the tendency for the space to lose fumigant through the duration of the fumigation. An initial dose of VAPORPH₃OS™ Phosphine Fumigant and CO₂ is used to establish a pesticidal atmosphere in the fumigation space, and through active monitoring of the Phosphine concentrations, additional VAPORPH₃OS™ Phosphine Fumigant and CO₂ added as required to maintain the target concentration for the prescribed time period.

The initial dose of fumigant is based on the total volume of the space to be fumigated and the target Phosphine concentration desired. When blending VAPORPH₃OS™ Phosphine Fumigant with CO₂, it is sometimes easier to speak in terms of the amount of Phosphine that is required rather than the amount of blended gas required.

One gram of Phosphine (PH₃) will produce a concentration of 25 parts per million (ppm) in a volume of 1000 cubic feet (ft³). This is the fundamental conversion used when calculating the amount of ECO₂FUME® fumigant gas needed to dose a space.

$$1 \text{ gram PH}_3 = 25 \text{ ppm PH}_3/1000 \text{ ft}^3$$

$$1 \text{ pound of VAPORPH}_3\text{OS}^{\text{TM}} \text{ phosphine fumigant} = 454 \text{ grams PH}_3$$

To calculate the total amount of Phosphine or VAPORPH₃OS™ Phosphine Fumigant required to dose a space:

$$\text{grams of PH}_3 = (\text{Target} \times \text{Volume}) / 25,000$$

“Target” is the desired Phosphine concentration in parts per million (ppm)
 “Volume” is the empty volume of the space to be fumigated in cubic feet (ft³)

To calculate the amount of Phosphine or VAPORPH₃OS™ Phosphine Fumigant to be added to a space to reestablish the Target concentration:

$$\text{grams of PH}_3 = (\text{Target} - \text{Actual}) \times \text{Volume} / 25,000$$

“Actual” is the measured Phosphine concentration in parts per million (ppm)
 “Target” is the desired Phosphine concentration in parts per million (ppm)
 “Volume” is the empty volume of the space to be fumigated in cubic feet (ft³)

As a general rule, 200 ppm of PH₃ from VAPORPH₃OS™ Phosphine Fumigant when blended with Carbon Dioxide will produce 8,000 ppm of carbon dioxide in the fumigation space.

Once the amount of Phosphine has been determined, the appropriate amount of Carbon Dioxide required can be calculated. The lower explosion limit for a blend of Phosphine in CO₂ is 3% vol Phosphine or 2.3% wt. The blending equipment is designed to produce a blend of 2.5% vol (1.9% wt) Phosphine in Carbon Dioxide. Engineering controls have been designed into the blending equipment that will prevent the Phosphine concentration from going outside the range of 2.0 – 2.9% vol (1.6 – 2.2% wt). It is recommended that twice this amount of Carbon Dioxide be available to ensure that an adequate supply is available for initial dose, redosing, and equipment purging.

$$\text{lb CO}_2 \text{ requires} = \frac{\text{gms PH}_3 \text{ required} \times 2}{454 \text{ gms/lb} \times 0.019}$$

When adding VAPORPH₃OS™ Phosphine Fumigant to a space, the Phosphine concentration should be actively monitored. This can be accomplished from outside the space by use of plastic sample tubing run through an opening and securely attached to a point inside the space. If the desired concentration is achieved before the calculated amount of VAPORPH₃OS™ Phosphine Fumigant has been added, the blending of VAPORPH₃OS™ Phosphine Fumigant with CO₂ should be stopped and the calculations should be checked. It is possible that a localized higher concentration has been detected and the gas requires more time to evenly disperse.

When a partial cylinder of VAPORPH₃OS™ Phosphine Fumigant is required, the cylinder can be placed on a scale and the amount of fumigant released can be measured. The scale should have a maximum capacity for at least 200 lb (90.7 kg) to accommodate the cylinder weight. It should also have an accuracy of ± 10% of the phosphine dosage. Example: if 2.2 lb (1000 gm) of phosphine is required, the scale should have an accuracy of ± 0.22 lb (100 gm). This should ensure that the target phosphine concentration can be maintained within 10% of the desired value. The scale can also be used to check how much VAPORPH₃OS™ Phosphine Fumigant is left in the cylinder by comparing this weight to the tare weight. The tare weight is stamped near the top of the cylinder and distinguished with the letters "TW". Subtract the tare weight from the measured weight and the difference is the amount of product left in the cylinder.

e. Troubleshooting

This section is provided to assist in addressing problems that may be encountered while using VAPORPH₃OS™ Phosphine Fumigant cylinders. In the event of potential leaking structures, refer to Section F. SEALING. When troubleshooting leaking cylinders, SCBA is required when levels of Phosphine are unknown, or known to exceed the short-term exposure limit (STEL; 1 ppm for 15 minutes for Phosphine). Troubleshooting assistance for a particular piece of blending equipment is addressed in the respective equipment manual. Questions for problems other than those listed below, should be directed to the authorized VAPORPH₃OS™ Phosphine Fumigant distributor.

- 1. Condensation is forming on the outside of the cylinder.

This is normal. As the fumigant is removed from the cylinder, the liquefied Phosphine boils to maintain the pressure in the cylinder gas space. This results in a chilling of the cylinder, and the condensing of moisture from the air.

- 2. Ice has formed on the bottom of the cylinder.

This is normal. The liquid Phosphine that remains in the cylinder must vaporize in order to be released. If the withdrawal rate is high enough, the temperature that results from chilling can be below the freezing point for water. Instead of ambient moisture simply condensing, it freezes on the cylinder surface.

- 3. There is a leak at the cylinder valve. REFER TO SECTION XIV: SPILL AND LEAK PROCEDURES.

- a) There is a leak at the cylinder valve outlet.

- i. If the cylinder is attached to the blending equipment:

The connection to the valve outlet might be the problem. If tightening (but not over-tightening) the outlet connection does not solve the problem, close the cylinder valve and

use the blending equipment to vent the remaining fumigant in the line. Purge the equipment, then disconnect the connection to the cylinder and inspect the fitting and valve outlet for damage. If the fitting is damaged, replace it. If the valve outlet is damaged, do not use the cylinder. Install the valve outlet plug and attach a tag to the cylinder conspicuously indicating "Bad Valve Outlet" and return it.

- ii. If the cylinder is not attached to the blending equipment:

Check to see if the cylinder valve is fully closed. If it is fully closed and the leak continues, the cylinder should be moved to a well-ventilated area, away from personnel. Refer to Spill and Leak Procedures, Section XIV.

- b) The leak is not at the cylinder valve outlet.

Assistance is required. Refer to Spill and Leak Procedures, Section XIV

- 4. Phosphine gas is not dispensing from cylinder.

Check to see if the cylinder is empty. Weigh the cylinder (without the cap) and compare it to the cylinder tare (empty) weight. The tare weight is stamped near the top of the cylinder and distinguished with the letters "TW". Subtract the tare weight from the measured weight. The difference is the amount of product in the cylinder. If there is a weight difference, then the cylinder has product and the outlet valve is faulty. Do not attempt to use the cylinder. Attach a tag to the cylinder indicating "bad valve" and return it to your distributor. Consult the blending equipment instructions for troubleshooting assistance.

- 5. Loss of CO₂ Supply

The blending equipment is designed to automatically shut down if the Carbon Dioxide supply pressure is lost or is insufficient. Close the phosphine cylinder discharge valve and discontinue operating the blending equipment until problems with the CO₂ supply are resolved. Contact the CO₂ equipment supplier for help in troubleshooting supply problems.

3. Application to Bulk Commodities

a. *General*

VAPORPH₃OS™ Phosphine Fumigant can be used to fumigate any type of storage used to hold listed bulk commodities. These include, but are not limited to bins, tanks, flat storage, and bunkers. The most important aspects of a successful fumigation, as with any fumigant, are the degree to which the space is sealed and the assurance that the minimum fumigant concentrations are maintained for the required time.

b. *Procedure for Fumigating Bulk Commodities*

- 1. Determine the target Phosphine concentration desired and the duration of the fumigation based on area fumigated, the insect pest(s) involved, and the prevailing temperature.
- 2. Calculate the empty volume space to be treated.
- 3. Calculate how much fumigant (Phosphine and CO₂) will be required.

4. Determine where the fumigant will be dispensed into the space, and plan for and install required equipment.
5. Gas monitoring should be performed from outside the fumigated structure. Polyethylene tubing is used for remote monitoring. This tubing can be run from each area of the fumigation to an outside location where gas samples can be taken safely. At least one monitoring line should be run in each fumigated structure. In the event of multi-floored structures or compartmentalized buildings, monitoring should be performed in all major areas of the fumigated structure. Fans can be used to help distribute gas into smaller areas and the outer reaches of these structures.
6. Isolate and seal all connections to other storage and spaces that are not intended for fumigation.
7. Seal all openings including cracks, windows, doors, vents, eaves, hatches, loading and unloading connections and ventilation fans. Seal all penetrations used for fumigant dispensing and monitoring. Use proper safety equipment and entry procedures if confined space entry is required.
8. Lock all entrances to the space.
9. Ensure that all personnel, animals, and damageable goods are clear of the space to be treated and post fumigation placards on all points of access and any unloading penetrations.
10. Verify that all required safety equipment is available and in good working order.
11. Notify all personnel in nearby buildings at the facility that fumigant release is about to commence.
12. Connect the VAPORPH₃OS™ Phosphine Fumigant cylinders to the blending equipment.
13. Purge and leak test the blending equipment.
14. Dispense the initial dose of fumigant.
15. Periodically monitor the Phosphine concentrations within the space, using suitable gas detection equipment, to ensure that the minimum concentrations are being maintained. During and immediately after blending of VAPORPH₃OS™ Phosphine Fumigant with the CO₂, the fumigation area should be monitored hourly for Phosphine concentrations until stabilized. If concentration is falling rapidly, the applicator should investigate the structure for possible leak points. Seal any leak points found. In a well-sealed structure, the Phosphine concentration should stabilize quickly and monitoring frequency can be reduced to daily measurements. The sampling frequency should be adjusted and additional VAPORPH₃OS™ Phosphine Fumigant blended as required to ensure the desired Phosphine concentrations are maintained during the fumigation period.
16. Blend and dispense additional fumigant as required to maintain the desired Phosphine concentrations.
17. When no further fumigant is required, close all cylinder valves and CO₂ source. Depressurize and purge the blending equipment and disconnect all VAPORPH₃OS™ Phosphine Fumigant cylinders and CO₂ source. Ensure that the valve discharge cap is securely installed and replace the cylinder cap.

- 28/45
18. When the fumigation is complete, unseal the space and aerate (see VIII. AERATION OF FUMIGATED COMMODITIES and IX. E. AERATION AND REENTRY). Recheck barricades and placards at all open entries into the space to prevent entry by unauthorized personnel. Use suitable gas detection equipment to check both the carbon dioxide and Phosphine concentrations before allowing entry into the space. Use appropriate breathing apparatus and entry procedures to avoid undue worker exposure.

Additional Considerations:

1. Dispensing and monitoring lines should be installed with loading, unloading and other operations in mind. If frequent fumigations are expected, permanently mounted lines should be secured within the space. If temporary lines are to be used, they should be installed so they can easily be removed at the end of the fumigation.
2. The use of additional tarpaulins or plastic sheeting atop the commodity should be considered, if there is a substantial open space above the stored product. This will help minimize the loss of Phosphine from the commodity and the total amount of fumigant required.
3. Recirculation of fumigant by specially installed small blowers is an excellent means of distributing the fumigant gas throughout the space being treated. The use of existing aeration blowers is not suggested since their capacity is often so high that it assists in the loss of the fumigant. Small commercial blowers can be used to recirculate the atmosphere within the space being treated. Blended VAPORPH₃OS™ Phosphine Fumigant should be dispensed into the discharge of recirculation blowers. The blowers should not be run continuously, but long enough to ensure good fumigant distribution and each time fumigant is added.
4. For large storage facilities, multiple dispensing points should be considered to assist in the distribution of the fumigant.

4. **Application to Space Fumigations**

a. *General*

VAPORPH₃OS™ Phosphine Fumigant can be used to fumigate any type of space (empty or full) where listed commodities are stored or processed, except barges. These include, but are not limited to mills, warehouses, processing facilities, packaging plants and other structures. The most important aspects of a successful fumigation, as with any fumigant, are the degree to which the space is sealed and the assurance that the minimum fumigant concentrations are maintained for the required time.

Blended VAPORPH₃OS™ Phosphine Fumigant dispensing lines shall not be placed in or attached to commodity packages containing processed food.

b. *Procedure for Fumigating Spaces*

1. Determine the target Phosphine concentration desired and the duration of the fumigation. This should be based on the target pests and the temperature of the space.
2. Calculate the empty volume of the space to be treated.

3. Calculate how much fumigant (Phosphine) will be required. (The CO₂ concentration is automatic and is controlled to ensure the mixture is nonflammable.)
4. Determine where the fumigant will be dispensed into the space, and plan for and install required components. Dispensing points should not be located in or attached to commodity packages. Direct the discharge toward the center of the space being treated and away from equipment if possible.
5. Determine the number and location of circulating fans. Low speed fans should be placed on the floor and angled upwards. A means of turning the fans off from outside the treated space should be provided.
6. Determine where the fumigant concentrations will be measured (if used) and plan for and install required gas sampling lines.
7. Identify one access door and lock all others. Lock all ground level and other accessible windows if possible.
8. Except for the access door, seal all openings including cracks, windows, doors, vents, eaves, ventilation fans and points of material transfer. Seal all penetrations used for fumigant dispensing and monitoring. Isolate and seal all connections to other spaces that are not intended for fumigation.
9. Remove from the space, or protect sensitive equipment, material and food.
10. Ensure that all personnel, animals and damageable goods are clear of the space to be treated and post fumigation placards on and lock all points of access. The only exception to this is silo complexes connected by tunnels. Separate ventilation and monitoring must be in place to protect workers in adjacent areas.
11. Close, lock, seal, and placard the access door.
12. Verify that all required safety equipment is available and in good working order.
13. Notify all personnel that fumigant release is about to commence.
14. Connect the VAPORPH₃OS™ Phosphine cylinders and CO₂ source to the blending equipment.
15. Purge and leak test the blending equipment.
16. Dispense the initial dose of blended VAPORPH₃OS™ and CO₂ fumigant.
17. Periodically monitor the Phosphine concentrations within the space, using suitable gas detection equipment, to ensure that the minimum concentrations are being maintained.
18. Blend and dispense additional fumigant as required to maintain the desired Phosphine concentrations.

- 30/45
19. When no further fumigant is required close all cylinder valves. Depressurize and purge the blending equipment and disconnect all VAPORPH₃OS™ Phosphine cylinders and CO₂ source. Ensure that the valve discharge cap is securely installed and replace the cylinder cap.
 20. When the fumigation is complete, unseal the space and aerate (see VIII. AERATION OF FUMIGATED COMMODITIES and IX. E. AERATION AND REENTRY). Barricade and placard all open entries into the space to prevent entry by unauthorized personnel. Use suitable gas detection equipment to check both the carbon dioxide and Phosphine concentrations before allowing entry into the space. Use appropriate breathing apparatus and entry procedures to avoid undue worker exposure.
 21. Remove all dispensing and gas monitoring lines.
 22. Workers should be aware that some residual gas may be entrapped within the fumigated commodity container (i.e., bagged product such as SUPERSACKS). Adequate monitoring and aeration must be performed to reduce any residual Phosphine levels to below 0.3 ppm.

5. Application to Tarpaulin Fumigations

a. *General*

VAPORPH₃OS™ Phosphine Fumigant can be used to fumigate stacked materials by covering the material with a tarpaulin made from plastic sheeting. This allows the fumigant to be contained to the treated material only. The most important aspects of a successful fumigation, as with any fumigant, are the degree to which the space is sealed and the assurance that the minimum fumigant concentrations are maintained for the required time.

Blended VAPORPH₃OS™ Phosphine Fumigant dispensing lines shall not be placed in or attached to commodity packages containing processed food.

b. *Procedure for Tarpaulin Fumigations*

1. Determine the target Phosphine concentration desired and the duration of the fumigation. This should be based on the target pests and the temperature of the material being treated.
2. Since the volume of tarped materials can vary widely, it is important to make a good estimate of the volume enclosed by the tarp. Calculate the volume taken up by the material itself (palletized stacks for example) or any containers used to hold it. After tarping is complete, revise the volume estimate based on the additional space contained within the tarp.
3. Calculate how much Phosphine will be required, based on the volume calculation.
4. Determine where the fumigant will be dispensed into the space, and plan for and install required components. Dispensing points should not be located in or attached to commodity packages or within containers.
5. Determine where the fumigant concentrations will be measured and plan for and install required gas sampling lines. Sampling points should not be located near dispensing points to avoid incorrect readings.

6. Cover the material with plastic sheeting using tape, glue or clamps to join individual sheets. If the flooring on which the material is placed is wood or other porous material, it should be covered first with plastic sheeting. Seal the plastic covering to the floor using tape, glue, sand or water "snakes", shoveling sand or soil onto the ends of the plastic, or by other suitable means. Reinforce by tape or other means, any sharp corners or edges to reduce the risk of tearing the plastic. Plastic sheeting should be a minimum of 2-mil thickness for indoor applications however, 4 mil is preferred and is more suitable for outdoor use. Ensure that tarp penetrations for dispensing and monitoring are well sealed.
7. Placard the tarped material.
8. Verify that all required safety equipment is available and in good working order.
9. Notify all personnel that fumigant release is about to commence. For the case of indoor tarp fumigations, the area surrounding the material being treated should be monitored for Phosphine and carbon dioxide concentrations to ensure that workers are not unduly exposed. It is required that all personnel not trained or involved in execution of the fumigation be restricted from entering the area, until the work is complete. Workers under a continuous roof, connected buildings or those working near an adjacent outside wall should be vacated.
10. Connect the VAPORPH₃OS™ Phosphine Fumigant cylinders to the blending equipment.
11. Purge and leak test the blending equipment.
12. Dispense the initial dose of blended VAPORPH₃OS™ and CO₂ fumigant gas.
13. Periodically monitor the Phosphine concentrations within the space, using suitable gas detection equipment, to ensure that the minimum concentrations are being maintained for the required time.
14. Dispense additional fumigant as required to maintain the desired Phosphine concentrations.
15. When no further fumigant is required, close all cylinder valves. Depressurize and purge the blending equipment and disconnect all VAPORPH₃OS™ Phosphine Fumigant gas cylinders. Ensure that the valve discharge cap is securely installed and replace the cylinder cap.
16. When the fumigation is complete, remove the tarp and aerate as appropriate using precautions to prevent exposure to workers (see VIII. AERATION OF FUMIGATED COMMODITIES and IX. E. AERATION AND REENTRY).

Additional Considerations:

1. Do not walk on tarped material once it has been sealed and fumigant has been dispensed.
2. Placard each access to the area where treatment is occurring.
3. Seal off doors, windows and other connections to adjacent areas that may be occupied and placard on the occupied side.

6. Application to Containers and Trailers

a. *General*

This section addresses fumigation of transport vehicles fumigated in place. Trailers and containers must not be fumigated over public roads, highways or railroads until they are aerated. See appropriate sections of this manual for recommendations on placarding, commodity aeration and training of persons authorized to remove placarding (Section VI) and commodity aeration (Section VIII).

Containers, trucks, and other transport vehicles loaded with bulk commodities, to which VAPORPH₃OS™ Phosphine Fumigant may be added are treated in essentially the same way as any other storage facility.

Blended VAPORPH₃OS™ Phosphine Fumigant dispensing lines shall not be placed in or attached to commodity packages containing processed food.

Trailers and containers require small amounts of fumigant. Fumigators should evaluate if cylinders of preblended ECO₂FUME® fumigant gas should be used.

Procedure for Container and Trailer Fumigation

1. Determine the target Phosphine concentration and exposure time desired. This should be based on the target pests and the commodity temperature.
2. Determine the empty volume of the trailer or container.
3. Calculate how much fumigant (VAPORPH₃OS™ will be required, and the dispensing time needed.
4. Inspect all sidewalls, roof, floor, and doors for cracks, holes or defects. Seal all openings with tape or caulk. Particular attention should be paid to any drain holes in the floor.
5. Install the fumigant gas dispensing line and secure it to the door, wall or floor with tape.
6. Close the door and seal with tape, caulk or polyethylene sheeting to prevent gas loss.
7. Affix fumigation placards to all sides of the container or trailer.
8. Verify that all required safety equipment is available and in good working condition.
9. Notify all personnel that fumigant release is about to commence. When trailers attached to tractors and trucks are fumigated, drivers should not be allowed to enter the vehicle until fumigation has ended and the truck is aerated.
10. Purge and leak test the blending equipment.
11. Blend and dispense the predetermined quantity of VAPORPH₃OS™ Phosphine Fumigant into the container or trailer.
12. Disconnect dispensing lines from dispenser.
13. Remove all gas dispensing lines entering the space and seal the penetrations used.

7. Application To Ships (not for use on barges)

a). General

- 1. Important – shipboard, in transit ship or ship hold fumigation is also governed by U.S. Coast Guard Regulation 46 CFR 147A. *Interim regulations for shipboard fumigation.* Refer to this regulation prior to fumigation. For further information contact:

Commandant
 U.S. Coast Guard
 Hazardous Materials Standards Division
 GMSO-3
 Washington, DC 20593-0001

- 2. VAPORPH₃OS™ Phosphine Fumigant is classified by EPA as a restricted use pesticide due to the acute inhalation toxicity of phosphine gas. This product is for retail sale to, and use only by, certified applicators for those uses covered by the applicator’s certification or persons trained in accordance with the Applicator’s Manual working under the direct supervision and in the physical presence of the certified applicator. Physical presence means on site or on the premises. Read and follow the label and the VAPORPH₃OS™ Phosphine Fumigant Application Manual that contains complete instructions for the safe use of this pesticide.
- 3. In addition to the ship fumigation procedures outlined in the following paragraphs (b, c, d, and e), applicators must follow the general procedures for fumigating bulk commodities (see IV. G. 3. b), spaces (see IV. G. 4. b), or containers (see IV.G. 6. b), as appropriate. Gas circulation assistance may be needed to ensure complete penetration with VAPORPH₃OS™ Phosphine Fumigant for bulk commodity fumigations. Suggestions are provided under “Additional Considerations” in Section IV.G.3.b, “Application to Bulk Commodities.”

b) Pre-Voyage Fumigation Procedures

- 1. Prior to fumigating a vessel for in-transit cargo fumigation, the master of the vessel, or his representative, and the fumigator must determine if the vessel is suitably designed and configured to allow for safe occupancy by the ship’s crew throughout the duration of the fumigation. If it is determined that the design and configuration of the vessel does not allow for safe occupancy by the ship’s crew throughout the duration of the fumigation, then the vessel will not be fumigated unless all crew members are removed from the vessel. The crew members must not be allowed to reoccupy the vessel until it has been properly aerated and a determination has been made by the master of the vessel and the fumigator that the vessel is safe for occupancy.
- 2. The person responsible for the fumigation must notify the master of the vessel or his representative of the requirements relating to personal protection equipment** and detection equipment, and that a person qualified in the use of this equipment must accompany the vessel with cargo under fumigation. Emergency procedures, cargo ventilation, periodic monitoring and inspections, and first aid measures must be discussed with and understood by the master of the vessel or his representative.

**Personal protection equipment means a NIOSH/MSHA approved air purifying full face gas-mask with a chin style mounted canister approved for phosphine, OR a NIOSH/MSHA approved supplied-air respirator

with a full face piece for phosphine up to 15 ppm. Although respiratory protection is not required for CO₂ exposure up to 5000 ppm, a canister respirator will not provide protection from CO₂ at any concentration. A self-contained breathing apparatus (SCBA) must be worn and operated in a positive pressure mode when phosphine levels are above 15 ppm or at unknown concentrations. 34/45

3. Seal all openings to the cargo hold or tank and lock or otherwise secure all openings, manways, etc., that might be used to enter the hold. The overspace pressure relief system of each tank aboard tankers must be sealed by closing the appropriate valves and sealing the openings into the overspace with gas-tight materials.
4. Placard all entrances to the treated spaces with fumigation warning signs.
5. If the fumigation is not completed and the vessel aerated before the manned vessel leaves port, the person in charge of the vessel shall ensure that at least two units of personal protection equipment and one gas or vapor detection device, and a person qualified in their operation be on board the vessel during the voyage. **The VAPORPH₃OS™ Phosphine Fumigant cylinders and the CO₂ source must be disconnected and removed from the vessel before it leaves port.**
6. During the fumigation or until a manned vessel leaves port or the cargo is aerated, the person in charge of the fumigation shall ensure that a qualified person using gas or vapor detection equipment tests spaces adjacent to spaces containing fumigated cargo and all regularly occupied spaces for fumigant leakage. If leakage of the fumigant is detected, the person in charge of the fumigation shall take action to correct the leakage or shall inform the master of the vessel, or his representative, of the leakage so that corrective action can be taken.

The person in charge of the fumigation shall review with the master, or his representative, the precautions and procedures to be followed during the voyage.

c) Application Procedures for Bulk Dry Cargo Vessels and Tankers

Immediately after application of the fumigant, close and secure all hatch covers, tank tops, butterworth valves, manways, etc.

1. If the fumigation is not completed and the vessel aerated before the manned vessel leaves port, the person in charge of the vessel shall ensure that at least two units of personal protection equipment and one gas or vapor detection device, and a person qualified in their operation be on board the vessel during the voyage. **The VAPORPH₃OS™ Phosphine Fumigant cylinders and the CO₂ source must be disconnected and removed from the vessel before it leaves port.**
2. During the fumigation or until a manned vessel leaves port or the cargo is aerated, the person in charge of the fumigation shall ensure that a qualified person using gas or vapor detection equipment tests spaces adjacent to spaces containing fumigated cargo and all regularly occupied spaces for fumigant leakage. If leakage of the fumigant is detected, the person in charge of the fumigation shall take action to correct the leakage or shall inform the master of the vessel, or his representative, of the leakage so that corrective action can be taken.

d) In-transit Fumigation of Transport Units (Containers) Aboard Ships

In-transit fumigation of transport units on ships is also governed by the U.S. Department of Transportation (DOT). RSPA 49 CFR 176.76 (h) transport vehicles, freight containers, and portable tanks containing hazardous materials and International Maritime Dangerous Goods Code P9025-1 Amdt. 30-00.

1. If the fumigation is not completed and the vessel aerated before the manned vessel leaves port, the person in charge of the vessel shall ensure that at least two units of personal protection equipment and one gas or vapor detection device, and a person qualified in their operation be on board the vessel during the voyage. **The VAPORPH₃OS™ Phosphine Fumigant cylinders and the CO₂ source must be disconnected and removed from the vessel before it leaves port.**
2. During the fumigation or until a manned vessel leaves port or the cargo is aerated, the person in charge of the fumigation shall ensure that a qualified person using gas or vapor detection equipment tests spaces adjacent to spaces containing fumigated cargo and all regularly occupied spaces for fumigant leakage. If leakage of the fumigant is detected, the person in charge of the fumigation shall take action to correct the leakage or shall inform the master of the vessel, or his representative, of the leakage so that corrective action can be taken.

e) Precautions and Procedures During Voyage

1. Using appropriate gas detection equipment, monitor spaces adjacent to areas containing fumigated cargo and all regularly occupied areas for fumigant leakage. If leakage is detected, the area should be evacuated of all personnel, ventilated, and action taken to correct the leakage before allowing the area to be occupied.

2. Do not enter fumigated areas except in an emergency. If necessary to enter a fumigated area, appropriate personal protection equipment must be used. Never enter fumigated areas alone. At least one other person, wearing personal protection equipment, should be available to assist in case of an emergency.

f) Precautions and Procedures During Discharge

If necessary to enter holds prior to discharge, test spaces directly above the cargo surface for fumigant concentration using appropriate gas detection and personal safety equipment. Do not allow entry to fumigated areas without personal safety equipment, unless fumigant concentrations are at safe levels, as indicated by a suitable detector.

V. PERSONAL PROTECTIVE EQUIPMENT (PPE)

A. GLOVES

It is recommended that leather work gloves or leather faced cotton gloves be used when connecting to or disconnecting VAPORPH₃OS™ Phosphine Fumigant cylinders from the blending equipment.

B. SAFETY GLASSES

When working with pressurized equipment, safety glasses should be worn.

C. SAFETY SHOES

It is recommended that steel-toed safety shoes be worn by anyone handling compressed gas cylinders.

D. HAND TRUCKS

Hand trucks are the recommended means of moving individual VAPORPH₃OS™ Phosphine Fumigant cylinders about the fumigation site. The hand truck should be designed specifically for compressed gas cylinders and equipped with a suitable chain or strap to ensure the cylinder remains in place. Never move a VAPORPH₃OS™ Phosphine Fumigant cylinder without valve cap and cylinder cap in place.

E. RESPIRATORS

1. When Respiratory Protection Must Be Worn

NIOSH/MSHA approved respiratory protection must be worn during exposure to concentrations in excess of permitted limits or when concentrations are unknown. Respiratory protection (SCBA) must be worn during trouble shooting for leaks if the concentration of Phosphine is unknown or known to exceed the STELs for Phosphine (1 ppm for 15 minutes) and/or carbon dioxide.

2. Permissible Gas Concentration Ranges For Respiratory Protection Devices

A NIOSH/MSHA approved, full-face gas mask Phosphine canister combination may be used at levels up to 15 ppm. Full-face canister respirators shall not be used in Phosphine concentrations above 15 ppm Phosphine

because of the presence of carbon dioxide. Although respiratory protection is not required for CO₂ exposure up to 5,000 ppm, a canister respirator will not provide protection from CO₂ at any concentration.

3. Requirements For Availability of Respiratory Protection

Respiratory protection must be available at the site of application in case it is needed when applying VAPORPH₃OS™ Phosphine Fumigant. An adequate number of self-contained breathing apparatus (SCBA) with full facepiece and operated in pressure-demand mode must be available at the site of application. Other types of respiratory protective equipment may be used as appropriate. See the following Table.

NIOSH –RECOMMENDED RESPIRATORY PROTECTION FOR WORKERS EXPOSED TO PHOSPHINE GAS:

<u>CONDITION</u>	<u>MINIMUM RESPIRATORY PROTECTION</u>
(Phosphine gas, ppm)	
0.3- 3	Supplied-air respirator
7.5 or less	Supplied-air respirator operated in a continuous-flow mode
15 or less	Self-contained breathing apparatus with full facepiece or supplied-air respirator with a full facepiece, or air-purifying full-facepiece respirator (gas mask) with a chin-style front- or back-mounted canister
50 or less	Supplied-air respirator equipped with a full facepiece and operated in pressure-demand mode or SCBA with a full facepiece and operated in a pressure-demand mode
More than 50 ppm	Do not enter until the phosphine level is 50 ppm or less

VI. PLACARDING OF FUMIGATED AREAS

The applicator must placard or post all entrances to the fumigated area with signs in English and Spanish bearing:

1. The signal word "**DANGER/PELIGRO**" and the **SKULL** and **CROSSBONES** symbol in red.
2. The statement, "Area and/or commodity under fumigation, **DO NOT ENTER/NO ENTRE**".
3. The statement "This sign may only be removed after the commodity is completely aerated (contains 0.3 ppm or less Phosphine gas and 5,000 ppm or less carbon dioxide). If incompletely aerated commodity is transferred to a new site, the new site must also be placarded and workers must not be exposed to more than 0.3 ppm Phosphine or 5,000 ppm carbon dioxide."
4. The date and time fumigation begins and fumigation is completed.
5. Name and EPA Registration number of fumigant used.
6. Name, address, and telephone number of the applicator.

- 7. All entrances to a fumigated area must be placarded. Placards should be placed in advance of the fumigation in order to keep unauthorized persons away. Do not remove a placard until the treated commodity is aerated down to 0.3 ppm or less of Phosphine and 5,000 ppm or less of carbon dioxide. To determine whether aeration is complete, each fumigated site or vehicle must be monitored and shown to contain 0.3 ppm or less Phosphine gas and 5,000 ppm or less of carbon dioxide in the air space around and, when feasible, in the mass of the commodity. For railcar hopper cars, placarding must be placed securely on both sides of the car near the ladders and next to or on the top hatch into which the fumigant is added.
- 8. Placards can only be removed by workers under the direct supervision of a certified applicator when the structure/container/vehicle is no longer under fumigation and aeration is complete. It is recommended that the person responsible for removing the placards be familiar with the physical, chemical and toxicological properties of Phosphine and carbon dioxide. They should also be knowledgeable in how to take gas readings, exposure limits, symptoms, and first aid treatment for Phosphine and carbon dioxide poisoning.

VII. GAS DETECTION EQUIPMENT

There are a number of devices on the market for the measurement of Phosphine gas as well as carbon dioxide levels for industrial hygiene purposes. Glass detection tubes used in conjunction with the appropriate hand-operated air sampling pumps are a widely used method. These devices are portable, simple to use, do not require extensive training and are relatively rapid, inexpensive and accurate. Electronic devices are also available for both low level and high Phosphine and carbon dioxide gas readings. The newer low-level electronic units as well as the low-level detector tubes can detect 0.01 ppm of Phosphine and are suitable for industrial hygiene monitoring. Such devices should be used in full compliance with manufacturers' recommendations.

VIII. AERATION OF FUMIGATED COMMODITIES

A. AUTHORIZED TRAINING FOR AERATION AT FUMIGATION SITES

Persons responsible for aeration of commodities (including receipt of transport vehicles under fumigation) must be trained following the EPA accepted product applicators manual or by other training that is accepted by local and/or state authorities. The manual must be available at fumigation and aeration sites. This training must cover the following items found in this manual:

- a. How to aerate the area under fumigation and verify that it contains no more than 0.3 ppm phosphine, or
- b. How to transfer the commodity to another storage area without prior aeration and ensure that worker safety limits are not being exceeded in the work zone during transfer.
- c. How to determine when respiratory protection must be worn.
- d. How to protect workers and nearby person from exposure to levels above the 8-hour TWA of 0.3 ppm phosphine or the 15 minute short-term exposure limit (STEL) of 1.0 ppm phosphine.
- e. Proper removal of placards from the site.

B. FOODS AND FEEDS

Tolerances for Phosphine residues have been established at 0.1 ppm for animal feeds, grains, nuts, and dates; 0.01 ppm for processed foods, fresh fruits and vegetables. To guarantee compliance with these tolerances, it is

necessary to aerate these commodities for 48 hours prior to offering them to the end-consumer. As an alternative to this aeration period each container of the treated commodity may be analyzed for residues using accepted analytical methods.

C. NON-FOOD COMMODITIES

Aerate all non-food commodities to less than 0.3 ppm of Phosphine. Continue to monitor densely packed commodities carefully.

D. TOBACCO

Tobacco must be aerated to less than 0.3 ppm. When plastic liners are used, longer aeration periods will probably be required to aerate the commodity down to less than 0.3 ppm. A minimum aeration period of 48 hours is required.

IX. APPLICATOR AND WORKER EXPOSURE

A. PHOSPHINE EXPOSURE LIMITS

Exposure to Phosphine must not exceed the 8-hour TWA of 0.3 ppm for applicators and workers during application. All persons in the treated site and in adjacent indoor areas are covered by this exposure standard. Worker or applicator exposure must not exceed 0.3 ppm maximum concentration over an 8-hour averaging period. Such exposures might occur because of leakage into enclosed areas from fumigation sites or during transfer of unaerated commodity. The short-term exposure limit (STEL) is 1.0 ppm Phosphine for 15 minutes.

B. CARBON DIOXIDE EXPOSURE LIMITS

Exposure to carbon dioxide must not exceed the 8-hour TWA of 5,000 ppm or the STEL of 30,000 ppm for applicators and workers during application. Exposure to carbon dioxide must not exceed the TLV of 5,000 ppm for any persons not associated with the application during the fumigation. All persons in the treated site and in adjacent indoor areas are covered by this exposure standard. After application is completed worker or applicator exposure must not exceed 5,000 ppm maximum concentration. Such exposures might occur because of leakage into enclosed areas from fumigation sites during transfer of unaerated commodity. An SCBA is required for any carbon dioxide concentrations exceeding the TLV or TWA.

C. APPLICATION OF FUMIGANT

Because it is not dependent on environmental conditions such as temperature and humidity, VAPORPH₃OS™ Phosphine Fumigant release is instantaneous. This instantaneous release can expose the fumigator to immediate high levels of Phosphine. If the fumigator's exposure exceeds the 8-hour TWA of 0.3 ppm of Phosphine and the TLV of 5,000 ppm (0.5% by volume) of carbon dioxide, approved respiratory protection such as an SCBA must be worn. Gas concentration measurements for safety purposes must be made using suitable low-level detection equipment. See the "Industrial Hygiene Monitoring" section below. The STEL for Phosphine is 1.0 ppm for 15 minutes. The STEL for carbon dioxide is 30,000 ppm.

D. LEAKAGE FROM FUMIGATED SITES

Phosphine and carbon dioxide are highly mobile and given enough time may penetrate seemingly gas tight materials such as concrete and cinder block. Therefore, adjacent, enclosed areas likely to be occupied must be monitored to ensure that significant leakage has not occurred. Sealing of the fumigated site and/or air now in the occupied areas should be used to reduce exposure.

E. AERATION AND REENTRY

If the area is to be entered after fumigation, it must be aerated until the level of Phosphine gas is 0.3 ppm or below and the level of carbon dioxide is 5,000 ppm (or 0.5% by volume) or below. The area or site must be monitored to ensure that liberation of gas from the treated commodity does not result in the development of unacceptable levels of Phosphine and carbon dioxide. Do not allow reentry into treated areas by any person before this time unless protected by an approved respirator.

F. HANDLING UNAERATED COMMODITIES

Transfer and processing of a treated commodity prior to complete aeration is permissible. In the process, people must not be exposed to Phosphine and/or carbon dioxide in excess of the permitted exposure limits. Transfer of incompletely aerated commodity via bulk handling equipment such as augers, drag conveyors and conveyor belts to a new site is permissible; however, the new storage must be placarded if it contains more than 0.3 ppm Phosphine or 5,000 ppm of carbon dioxide. Workers who handle incompletely aerated listed commodity must be informed and appropriate measures must be taken (i.e., ventilation or respiratory protection) to prevent exposures from exceeding the exposure limits for Phosphine and carbon dioxide. This section does not pertain to transferring fumigated containers or vehicles over public roads. The transfer of unaerated containers or truck trailers over public roads is prohibited.

G. INDUSTRIAL HYGIENE MONITORING

At each site and operation, monitor airborne Phosphine and carbon dioxide concentrations in all indoor areas to which fumigators and other workers have had access during fumigation and aeration. Perform such monitoring in workers' breathing zones. This monitoring is performed to determine when and where respiratory protection is required. After gas concentrations have been adequately characterized for various locations, spot-check those areas to determine whether conditions have significantly changed or if an unexpected garlic-like odor is present. Record all monitoring data in an operation log or manual.

H. ENGINEERING CONTROLS AND WORK PRACTICES

If initial monitoring shows that workers are exposed to concentrations in excess of the permitted exposure limits, then engineering controls (such as forced air ventilation) and/or appropriate work practices should be used (such as using personal exposure monitors) where possible to reduce exposure to below permitted limits. In any case, PPE must be worn if Phosphine and/or carbon dioxide exposure limits are exceeded.

X. SAFE HANDLING OF COMPRESSED GASES IN CONTAINERS

The following are excerpts from the Compressed Gas Association (CGA) Pamphlet P-1 "Safe Handling of Compressed Gases in Containers". These are provided to assist the user with the more important aspects of cylinder handling. It is recommended that the user be familiar with all aspects of this pamphlet.

1. The user is responsible for the safe use of the container and its contents and for returning the container to the gas manufacturer or distributor in the same safe condition as it was received.
2. The user shall not modify, tamper with, obstruct, remove or repair any part of the cylinder package. Only trained personnel under direction of the container owner or authorized representative shall perform maintenance of the container and its valve.
3. The prescribed stamped marking on the container shall be made and kept in a legible condition. The user shall not remove or alter any of these markings.
4. The labels applied by the gas manufacturer to identify the container contents shall not be defaced or removed by the user.
5. Compressed gas containers shall not be exposed to temperature extremes.
6. Leaking or defective containers shall not be offered for shipment.
7. Any damage that might impair the safety of the container shall be called to the attention of the gas supplier before returning the container.
8. The user shall keep the supplied cap and gas tight outlet cap on the cylinder at all times, except when cylinders are secured and connected to dispensing equipment. Both of these caps must be in place prior to shipment. The outlet cap shall be tightened.
9. The cylinder valve shall be kept closed at all times (charged or empty) except when the cylinder is in use. Wrenches, hammers or other tools shall not be used in attempting to open or close a valve.
10. Cylinders shall not be rolled in the horizontal position or dragged. A suitable hand truck should be used for individual cylinders and as appropriate, a forklift truck for use with palletized cylinders. Cylinders shall never be lifted by the cap, valve or by use of magnets.
11. Care should be used when handling cylinders to guard against dropping or permitting them to violently strike against each other and other surfaces.
12. Compressed gases shall not be transferred from one cylinder to another except by the gas manufacturer using qualified, trained personnel with the appropriate equipment and operating procedures.
13. Cylinder valve connections that do not fit shall not be forced.
14. Gas tight connections including piping, regulators and other apparatus shall be kept gas tight to prevent leakage. DO NOT tighten connections or leaking fittings or attempt other repairs while the system is under pressure.
15. Prior to disconnecting a cylinder from dispensing equipment, the cylinder valve shall be closed and the dispensing equipment relieved of pressure.
16. Transportation of compressed gas cylinders in automobiles or closed-bodied vehicles can present serious safety hazards and should not be done. Shipping compartments should be adequately ventilated.

- 17. An emergency response plan shall be implemented whenever compressed gas containers are used, handled or stored.
- 18. Before using a gas, read the label and material safety data sheet for information about the material. Exposure to toxic gases shall be kept as low as possible but in no case should concentrations exceed the exposure levels established by the Occupational Safety and Health Administration.

XI. STORAGE OF CYLINDERS

A. GENERAL

The first consideration when planning a storage area for VAPORPH₃OS™ Phosphine Fumigant cylinders is the needs of the local authorities. It is important that emergency response professionals are aware of all hazardous materials stored in their jurisdiction. They should be provided with an MSDS and detailed information on the quantities of product stored and the nature and location of the storage area.

B. EMERGENCY RESPONSE PLAN

A clearly defined emergency response plan should be developed for the site. This plan should define procedures and outline responsibilities in addressing emergency situations involving VAPORPH₃OS™ Phosphine Fumigant. All site personnel should be trained in the plan and it should be practiced periodically.

Proper handling procedures as outlined in this manual must be followed. Storing cylinders with the valve discharge cap securely in place will minimize the potential for leaks. Outside storage of cylinders in a secure, well-ventilated, and preferably covered area is recommended. See Part D. of this section for further information.

C. INDOOR STORAGE

The storage of poison gases in occupied spaces is not recommended. However, indoor storage in a separate building with no other occupancy is suitable. The building should be of non-combustible construction (1 hour fire rating), adequately ventilated and equipped with a continuous Phosphine monitoring and alarm system that is activated at the TLV of 0.3 ppm. Operating personnel must not enter a building, when the alarm is activated, without wearing a SCBA with full facepiece and operated in pressure-demand mode. In some jurisdictions, the indoor storage of toxic gases is prohibited.

D. OUTDOOR STORAGE

It is recommended that both full and used VAPORPH₃OS™ Phosphine Fumigant cylinders be stored outdoors in a dedicated and properly designed and labeled storage area. The following are recommended for outdoor storage:

- 1. A firm and level surface, preferably reinforced concrete, well drained.
- 2. Chain link fence topped with three strands of barbed wire, with gate and lock.
- 3. Covered, if snow accumulation is likely to cause handling problems. Non-combustible construction.
- 4. Shaded, if high temperatures are expected. Non-combustible construction.

- 5. Protected from vehicle traffic.
- 6. A means of securing all cylinders.
- 7. Away from building ventilation intakes.
- 8. Equipped with a windsock to indicate wind direction.

E. TEMPERATURE LIMITATIONS

VAPORPH₃OS™ Phosphine Fumigant cylinders should never be stored where the temperature will exceed 125 °F (51.7 °C). Low temperatures will not affect VAPORPH₃OS™ Phosphine Fumigant.

F. SECURING CYLINDERS

Cylinders must be stored in an upright position and protected from falling. Protection against falls can include the use of cylinder pallets with straps, walls and securing chains, or pens constructed from steel handrail or like construction.

G. LABELLING OF STORAGE

The labeling of the VAPORPH₃OS™ Phosphine Fumigant cylinder storage area should take into account the needs of a variety of organizations. These should include, but not be limited to corporate policy, insurance carrier, Occupational Safety and Health Administration (OSHA), Right to Know and local emergency response professionals. As a minimum, it is suggested that the storage be clearly marked with the following signs:

- 1. Danger, Poison (with skull and crossed bones) placard
- 2. Flammable placard
- 3. Authorized Personnel Only
- 4. NFPA Hazard Identification Symbols

The National Fire Protection Association (NFPA) developed NFPA Hazard Identification Symbols. This standardized symbol system is designed to provide, at a glance, information regarding the health, fire, and reactivity hazards associated with hazardous materials. The following are the hazard categories and degree of hazard for VAPORPH₃OS™ Phosphine Fumigant:

Category	Degree of Hazard
Health	3
Flammability	4
Reactivity	I

Materials to properly label the storage area in compliance with NFPA standards can be purchased through most safety supply companies.

NOTE: When using the NFPA Hazard Identification System, the characteristics of all hazardous materials stored in a particular area must be considered. The local fire protection district should be consulted for guidance on the selection and placement of such signs.

XII. TRANSPORT

A. GENERAL

VAPORPH₃OS™ Phosphine Fumigant is classified as a poison gas and flammable gas by the United States Department of Transportation (DOT) and it shall only be transported in accordance with DOT regulations. All persons involved in the transport of or the preparation of cylinders for transport should be trained in and familiar with the specifications of 49 CFR (Code of Federal Regulations).

B. TRANSPORT DESIGNATIONS

The following transport designations apply to VAPORPH₃OS™ Phosphine Fumigant:

Proper Shipping Name:	Phosphine
Hazard Class:	2.3
Subsidiary Class	2.1
Identification Number:	UN 2199
Shipping Label:	Poison Gas Flammable Gas
Additional Description:	Poison Inhalation Hazard, Zone A

C. TRANSPORT REQUIREMENTS

1. Package Preparation

VAPORPH₃OS™ Phosphine Fumigant cylinders shall not be transported unless:

- The cylinder valve is fully closed.
- The gas tight outlet cap is secured on the valve outlet.
The cylinder cap is secured.
- The cylinder has a readable, proper shipping label.

2. Cylinder Contents

Used VAPORPH₃OS™ Phosphine Fumigant cylinders can still contain residual gas, and shall be offered for transport and transported as if they are full. Check with your distributor if you have questions about shipping VAPORPH₃OS™ Phosphine Fumigant cylinders.

3. Documents

Proper documentation is required by law for the transport of any hazardous material. The documentation accompanying the shipment of Phosphine (whether full, partially full, or empty) must include the labeling, a bill of lading, placard, and the MSDS. The documents must clearly identify the quantity and nature of all hazardous materials being transported or offered for transport by a second party. All persons generating such documents should be trained in their preparation.

4. Vehicle Loading

VAPORPH₃OS™ Phosphine Fumigant cylinders shall only be loaded into unoccupied spaces of vehicles. All cylinders shall be secured from movement during transport.

5. Vehicle Markings

Vehicles transporting VAPORPH₃OS™ Phosphine Fumigant shall be placarded in accordance with table I of 172.504 of 49 CFR. Consideration should be made for other hazardous materials that are concurrently being transported. Proper placarding should take into account all hazardous materials on board.

6. Use of Common Carriers

Shipment of VAPORPH₃OS™ Phosphine Fumigant cylinders by common carrier is permitted, provided the carrier meets certain criteria. Contact an authorized VAPORPH₃OS™ Phosphine Fumigant distributor for an approved list of common carriers.

Driver Qualifications

Anyone operating a vehicle that is carrying hazardous materials must be in possession of a current Commercial Drivers License (CDL) with Hazardous Material Endorsement.

XIII. DISPOSAL

Once used, VAPORPH₃OS™ Phosphine Fumigant cylinders are to be returned only to an authorized distributor or their designated point of return. This applies to all cylinders, regardless of the quantity of material remaining in the package. Disposal of the cylinder contents is prohibited. If the cylinder is partially full do not release the remaining gases; just return the cylinder to authorized distributor.

XIV. SPILL AND LEAK PROCEDURES

A. GENERAL

All releases can produce high levels of toxic Phosphine gas, and therefore, attending personnel must wear a SCBA with full facepiece and operated in a pressure demand mode when the concentration of Phosphine gas is unknown. If the concentration is known, other NIOSH/ MSHA approved respiratory protection must be worn.

This material is spontaneously flammable in air and may form an explosive mixture in air. In case of fire, stop flow of gas if without risk. Use water spray, alcohol foam, carbon dioxide or dry chemical to extinguish fires. Use water to keep cylinders cool.

B. WHAT TO DO

In the event of an accidental release, evacuate the area immediately. Only trained emergency responders should attempt a response into the leak area. If it is possible to shut off the source of the leak from a remote area, it should be done. Otherwise, evacuate the area and call for assistance.

C. WHO TO CALL

CYTEC operates a 24-hour Emergency Response and Incident Management System (ERIM). For emergencies involving spills, call CHEMTREC: 1-800-424-9300. For emergencies involving leak, fire or exposure, call 911 or local Fire and Rescue or Cytec's Emergency Phone No. 1-800-424-9300. Outside the US or Canada call 703-527-3887.

D. EMERGENCY RESPONDERS

All emergency responses should be made in level B protection, which includes neoprene, butyl rubber or PVC, gloves; Seranex coated Tyvek suit, rubber boots and an air-supplied respirator.