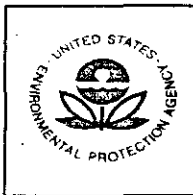


67712-15

2/16/2006

Page 1722



U.S. ENVIRONMENTAL PROTECTION AGENCY  
Office of Pesticide Programs  
Registration Division (H7505C)  
401 "M" St., S.W.  
Washington, D.C. 20460

EPA Reg. Number:

67712-15

Date of Issuance:

FEB 16 2006

Term of Issuance: Conditional

Name of Pesticide Product:

Nature 2 SPA

NOTICE OF PESTICIDE:

- Registration
- Reregistration

(under FIFRA, as amended)

Name and Address of Registrant (include ZIP Code):

Zodiac Pool Care, Inc.  
2028 N.W. 25<sup>th</sup> Avenue  
Pompano Beach, FL 33069

22

Note: Changes in labeling differing in substance from that accepted in connection with this registration must be submitted to and accepted by the Registration Division prior to use of the label in commerce. In any correspondence on this product always refer to the above EPA registration number.

On the basis of information furnished by the registrant, the above named pesticide is hereby registered/reregistered under the Federal Insecticide, Fungicide and Rodenticide Act.

Registration is in no way to be construed as an endorsement or recommendation of this product by the Agency. In order to protect health and the environment, the Administrator, on his motion, may at any time suspend or cancel the registration of a pesticide in accordance with the Act. The acceptance of any name in connection with the registration of a product under this Act is not to be construed as giving the registrant a right to exclusive use of the name or to its use if it has been covered by others.

This product is conditionally registered in accordance with FIFRA sec. 3(c)(7)(A) provided that you:

1. Submit and/or cite all data required for registration/ reregistration of your product under FIFRA sec. 3(c)(5) when the Agency requires all registrants of similar products to submit such data; and submit acceptable responses required for reregistration of your product under FIFRA section 4.
2. Make the following label changes:
  - a. Revise the EPA Registration Number to read, "EPA Reg. No. "67712-15".

Signature of Approving Official:

Marshall Swindell, PM 33  
Regulatory Management Branch 1  
Antimicrobial Division (7510C)

Date:

FEB 16 2006

2 8 22

Page 2

EPA Registration No. 67712-15

b. Delete the terms "Disinfectant" and "Disinfects" from the product label.

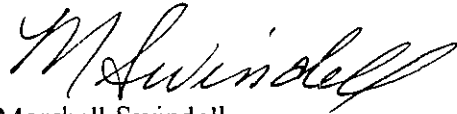
3. Submit two copies of the final printed labeling for our record.

If these conditions are not complied with, the registration will be subject to cancellation in accordance with FIFRA sec. 6(e). Your release for shipment of the product constitutes acceptance of these conditions.

A stamped copy of the accepted labeling is enclosed for your records.

If you have any questions concerning this letter, please contact Martha Terry at (703) 308-6217.

Sincerely,



Marshall Swindell  
Product Manager 33  
Regulatory Management Branch 1  
Antimicrobial Division (7510C)

Enclosure

3 8 22

ACCEPTED  
with COMMENTS  
EPA Letter Dated:

FEB 16 2006

Under the Federal Insecticide,  
Fungicide, and Rodenticide Act as  
amended, for the pesticide,  
registered under EPA Reg. No.

67712-15



**ZODIAC**



**Mineral Sanitizer**



**FOR SPAS**  
**The No Bromine Alternative\***

**Mineral Sanitizer**



**FOR SPAS**  
**The No Bromine Alternative\***

**It's compatible**

- ◆ Compatible with most spa maintenance products\*\*\*
- ◆ Designed to fit most portable spas
- ◆ Nature<sup>2</sup> Technology† is compatible with ozonators

**Enhanced bather comfort**

- ◆ Reduces potential for stinging eyes, skin irritation and unpleasant odors

† Nature<sup>2</sup> technology consists of the mineral silver.

\*\*\* Do not use this product with copper-based algacides, bromine or bromide chemicals, or Biguanides (Baquacil®, BaquaSpa®, Soft Swim®, Revacil®). Baquacil and BaquaSpa® are registered trademarks of Avecia, Soft Swim is a registered trademark of Biolab, Inc. Revacil is a registered trademark of Mareva Inc.

**ACTIVE INGREDIENTS:**

Metallic Silver**	0.92%
<b>OTHER INGREDIENTS</b>	<b>99.08%</b>
<b>TOTAL</b>	<b>100.00%</b>

\*\*From Silver Nitrate

**KEEP OUT OF REACH OF CHILDREN**  
**CAUTION**

See back panel for additional precautionary statements.

EPA Reg. No. 67712-X EPA Est. No. 67712-FL-001

\* Requires a small maintenance dose of non-chlorine oxidizer (MPS - Potassium Peroxymonosulfate) and an EPA registered dichlor (Sodium Dichloro-s-triazinetrione) for initial and routine superchlorination and shock treatment.

**NET CONTENTS: 98 GRAMS**  
**SPA CAPACITY: UP TO 500 GALLONS**



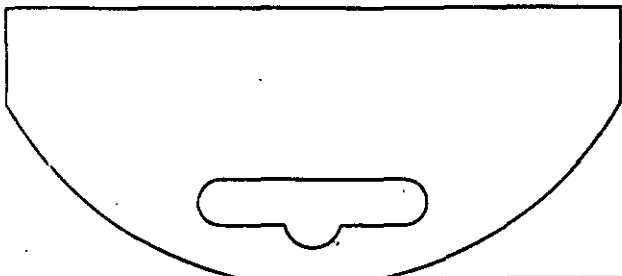
PART#  
WXXXXX

US Patent Numbers

© 2005 Zodiac Pool Care, Inc.  
Made in the USA



4 8, 22



SPA  
Nature<sup>2</sup> Mineral Sanitizer  
for Spas

# Mineral Sanitizer



FOR SPAS  
The No Bromine  
Alternative  
Installs in seconds  
right into your  
spa filter.

Please refer to the operating manual for complete installation instructions.

### PRECAUTIONARY STATEMENT

Hazards to Humans and Domestic Animals:  
In the unlikely event that a cartridge breaks, mineral media should not be ingested by humans or animals as it may cause gastric distress.

### FIRST AID

IF INGESTED: Call poison control center or doctor immediately for treatment advice.

### STORAGE/DISPOSAL

Storage - store in areas inaccessible to small children.  
Disposal - After four (six) months of use, discard cartridge in household trash. Do not save the cartridge for re-use. The cartridge is manufactured with mineral sealed media inside. In the unlikely event a cartridge breaks, remove it and vacuum out any media introduced into the pool water.

### DIRECTIONS FOR USE:

It is a violation of Federal Law to use this product in a manner inconsistent with its labeling. See owner's manual inside box for directions for use.

### CHANGE THIS CARTRIDGE EVERY FOUR (SIX) MONTHS

Use of this cartridge for longer than four (six) continuous months will void the warranty. Discard this cartridge at the end of four (six) months.



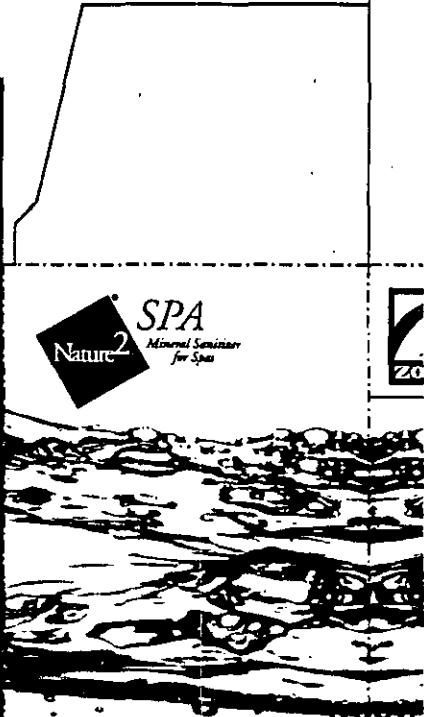
Zodiac Pool Care, Inc.  
2028 NW 25th Avenue  
Pompano Beach, FL 33069



with COM  
EPA Lower Data.

FEB 1 6 2006

Under the Federal Insecticide,  
Fungicide, and Rodenticide Act as  
amended, for the pesticide,  
registered under EPA Reg. No.  
6 27 12 - 15



SPA  
Nature<sup>2</sup> Mineral Sanitizer  
for Spas

## Mineral Sanitizer

FOR SPAS  
The No Bromine Alternative

The Nature<sup>2</sup> Spa  
effectively sanitizes  
your spa

- ◆ Sanitizes (disinfects) spa water
- ◆ Restores water clarity
- ◆ Mineral cartridge lasts 4 (6) months

### It's Nature<sup>2</sup> Technology

Nature<sup>2</sup> Spa features Nature<sup>2</sup> Technology which is an effective process that sanitizes spa water using minerals.

To keep your patented Nature<sup>2</sup> Sanitizer operating properly, it is necessary to change this cartridge every four (six) months.

NET  
SPA

5 8 22

Product name: Nature<sup>2</sup> Spa  
EPA Reg. No. 67712-x  
08/26/05

{Additional optional statements}

It's Nature<sup>2</sup>  
Nature<sup>2</sup> inside  
It's easy to install!  
Installs in seconds right into your filter  
Satisfaction guaranteed  
Ask about the Nature<sup>2</sup> Spa Test Strips!  
Will not damage spa [hot tub] equipment or finish  
For use in portable residential spas [hot tubs] only  
Reduces potential for unpleasant odor and scum lines  
The mineral cartridge  
Mineral sanitizer for spas [hot tubs]  
Mineral Spa sanitizer  
The Spa Sanitizer  
Spa [hot tub] Sanitizer  
Kills bacteria  
Sanitizes water  
Controls/kills/reduces/destroys bacteria  
Sanitizes spa [hot tub] water  
~~XXXXXXXXXXXX~~  
Advanced technology ~~XXXXXX~~ [sanitizes] spas [hot tubs]  
Specially formulated to control bacteria  
Inhibits the growth of [undesirable] bacteria  
Patented mineral process assists in killing bacteria  
Patented mineral process controls bacteria  
This cartridge continuously controls bacteria for [4][6] months in a spa [hot tub]  
[Spa] sanitized by Nature<sup>2</sup>  
Nature<sup>2</sup> Spa sanitizer is odor free  
Keeps spa [hot tub] water clean and crystal clear  
Brilliantly clear, odor-free spa [hot tub] water  
For Crystal Clear Water in all types of spas [hot tubs]  
For Sparkling Clear Water!  
Crystal Clear water for your spa [hot tub]  
[The Nature<sup>2</sup> Spa] improves water quality  
[The Nature<sup>2</sup> Spa] restores water quality

ACCEPTED  
with COMMENTS  
EPA Letter Dated:

FEB 16 2006

Under the Federal Insecticide,  
Fungicide, and Rodenticide Act as  
amended, for the pesticide,  
registered under EPA Reg. No.

67712-15

Note: Bracketed [ ] information is optional text/picture/diagram. Text separated by a forward slash (/) denotes—and/or—options.  
Braced { } text is for administrative purposes only and will not appear on the printed label.

FEB 16 2006

{Additional optional statements}

Under the Federal Insecticide,  
Fungicide, and Rodenticide Act as  
amended, for the pesticide,  
registered under EPA Reg. No.  
67712-13

Restores water quality  
[Nature<sup>2</sup>®] water is brilliantly clear and soft

{Insert product name} ends bromine hassle, and improves water quality.

{Insert product name} ends chlorine hassle, when used in combination with MPS\*, and improves water quality.

\*Potassium peroxymonosulfate {The full name will either follow each use of the term MPS or asterisked and the term defined elsewhere on the label}

Ends routine usage of chlorine and bromine and restores water quality when used in conjunction with MPS\*

[It's] compatible with most spa [hot tub] filtration systems

Designed to fit most [portable] [spas] hot tubs

Compare the difference!

Enhanced bather comfort

{Insert product name} can even be used with your ozonator [chlorine generator].

Compatible with ozone

Compatible with most spa [hot tub] maintenance products [including ozonators]\*\*\*\*

\*\*\*\* Do not use this product with copper-based algaecides, bromine or bromide chemicals, or Biguanides (Baquacil®, Baquaspa®, SoftSwim®, Revacil®). Baquacil is a registered trademark of Avecia, SoftSwim is a registered trademark of BioLab, Inc. Revacil is a registered trademark of Mareva, Inc.

Compatible with other maintenance products except [copper-based algaecides,] biguanide, bromine or bromide based chemicals

Not for use with Bromine

[An] alternative to chlorine [maintenance programs] when used in combination with MPS\*

[An] alternative to bromine [maintenance programs]

Reduce Chlorine Usage when used in combination with MPS\*

[The] alternative to chlorine when used in combination with MPS\*

The alternative to bromine

The product installs easily and requires no electricity to run. You don't touch it again except to replace the cartridge every [4][6] months

[In order] To keep [your] [the] patented Nature<sup>2</sup>® [Spa] sanitizer operating properly, it is important to change [this] [the] cartridge every [4][6] months

Simply replace the cartridge every [4][6] months

{Insert product name} [cartridge] Lasts [up to] [a full] [4] [6] months!

Requires [only] a small maintenance dose of non-chlorine oxidizer (MPS\*) [after initial start-up with dichlor (Sodium dichloroisocyanurate dihydrate)]

Exclusive patented mineral technology†

† Nature<sup>2</sup>® Spa technology consists of the mineral silver

Note: Bracketed [ ] information is optional text/picture/diagram. Text separated by a forward slash (/) denotes—and/or—options. Braced { } text is for administrative purposes only and will not appear on the printed label.

7 8 22

Product name: Nature<sup>2</sup> Spa  
EPA Reg. No. 67712-x  
08/26/05

{Additional optional statements}

Nature<sup>2</sup>® technology† is an effective process that sanitizes spa [hot tub] water using minerals  
Nature<sup>2</sup>® technology†

The Nature<sup>2</sup>® Spa is an exclusive patented mineral technology†

[Made] [Assembled] in the USA [from components made in China and USA]

Nature<sup>2</sup>® is a [registered] trademark of Zodiac Pool Care, Inc.

[www.nature2.com](http://www.nature2.com)

[www.zodiacpoolcare.com](http://www.zodiacpoolcare.com)

Made in U.S.A

Box part # {Insert number}

Product part # {Insert number}

Quickly and easily install {insert product name}, then relax while it consistently and conveniently sanitizes your water for a full [4] [four] [6] [six] months.

Continuous Silver Ion Sanitizer

{Insert company/product names} are [is a] [registered] trademark[s] of {insert company name}

Printed in the USA specifications subject to change without notice

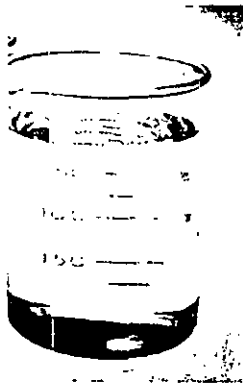
Manufactured exclusively for {insert company name}

Custom designed for {insert company name}

Specifically designed for {insert company name}

The {insert product name} [sanitizer] has been designed to work exclusively in {insert names} spas by utilizing water flow through the {insert company/product name} filter system

Clear and Soft Water Sanitization for Your Spa [Hot Tub]



{Insert product name} treated water is brilliantly clear and soft.

ACCEPTED  
with COMMENTS  
EPA Letter Dated:

FEB 16 2006

Under the Federal Insecticide,  
Fungicide, and Rodenticide Act as  
amended, for the pesticide,  
registered under EPA Reg. No.

67712-15

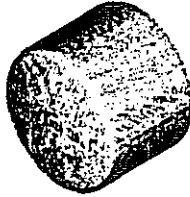
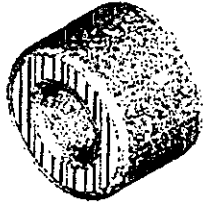
Note: Bracketed [ ] information is optional text/picture/diagram. Text separated by a forward slash (/) denotes—and/or—options.  
Braced { } text is for administrative purposes only and will not appear on the printed label.

8722

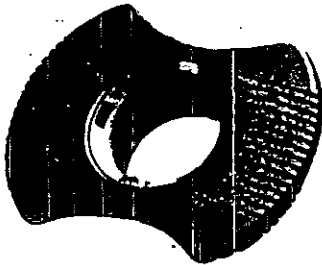
{language/pictures/diagrams on this page are optional and may appear on any panel of the carton label in any combination}

{**GRAPHICS AND ACCOMPANYING TEXT THAT ARE SPECIFIC TO OEM PRODUCTS. VARIOUS INSTALLATION DIRECTIONS ARE PROVIDED A LINE SEPARATES THE VARIOUS MODELS.**}

{Below are graphics of prior cartridge models}



{Below is the graphic of the current cartridge model}



**ACCEPTED  
with COMMENTS  
EPA Letter Dated:**

**FEB 16 2006**

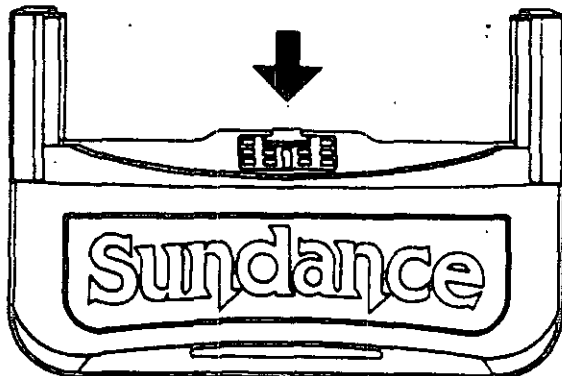
Under the Federal Insecticide,  
Fungicide, and Rodenticide Act as  
amended, for the pesticide,  
registered under EPA Reg. No.  
67712-13

{The cartridge names listed are not the product being registered. This list is provided to aid the consumer in determining equivalent replacements}

This {insert product name} cartridge replaces any of the following parts for your Dimension One Spa:  
Pure Vision cartridge P/N :1512-111 Ultra Vision cartridge P/N : 1512-112 Crystal Vision cartridge P/N : 1512-80  
Retro-fits to all spas [hot tubs] with the following water management systems:  
Crystal Pure 1989-1996 (Crystal Vision cartridge)  
Ultra Pure 1996- current (Pure and Ultra Vision cartridges)  
Crystal Zone 1992 – current (Pure Vision cartridge)  
Clear Zone 1998 – current (Pure Vision cartridge)  
Vision Sanitizing System

Installs in seconds right into your filter gate Brominator™.

{Brominator™ is a trademarked name for a spa part. It is not meant to indicate that bromine is compatible with Nature<sup>2</sup> Spa.}



Note: Bracketed [ ] information is optional text/picture/diagram. Text separated by a forward slash (/) denotes—and/or—options. Braced { } text is for administrative purposes only and will not appear on the printed label.



9 8 2 2

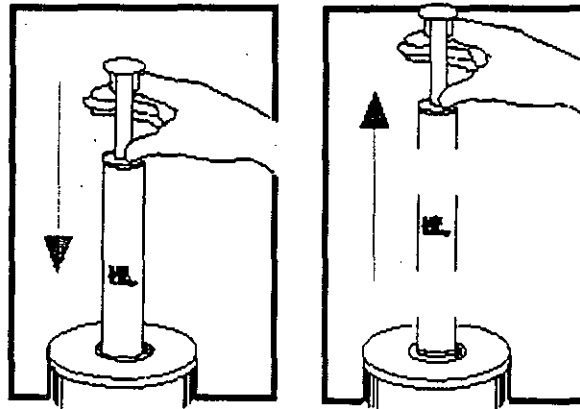
Product name: Nature<sup>2</sup> Spa  
EPA Reg. No. 67712-x  
02/26/04

{language/pictures/diagrams on this page are optional and may appear on any panel of the carton label in any combination}



1. Attach handle to main body.
2. Remove silver cap from filter standpipe
3. Drop cartridge into filter standpipe, handle up.
4. Replace cap onto filter standpipe.

The {insert product name} cartridge comes in two parts, the main body and the handle.

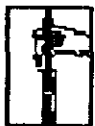


ACCEPTED  
with COMMENTS  
EPA Letter Dated:

FEB 16 2006

Under the Federal Insecticide,  
Fungicide, and Rodenticide Act as  
amended, for the pesticide,  
registered under EPA Reg. No.

67712-15



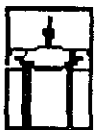
1. Attach extender to main cartridge.



2. Remove filter from spa.



3. Insert {insert product name} cartridge into bottom of filter.  
(Allow cartridge to rest on inside lip of filter.)



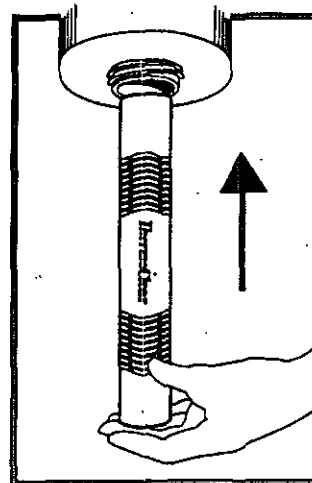
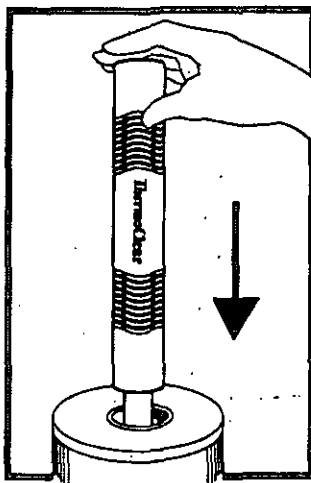
Replace this cartridge every 4 months.

Note: Bracketed [ ] information is optional text/picture/diagram. Text separated by a forward slash (/) denotes—and/or—options. Braced { } text is for administrative purposes only and will not appear on the printed label.

10 722

Product name: Nature<sup>2</sup> Spa  
EPA Reg. No. 67712-x  
02/26/04

{language/pictures/diagrams on this page are optional and may appear on any panel of the carton label in any combination}



1. Connect the support stems.
2. Slide the entire device into the core of your filter cartridge.
3. Adjust the location of the spa sanitizer.



Installs in seconds  
right into your filter.

1. Connect the support stems.
2. Slide the entire device into the core of your spa filter cartridge.
3. Adjust the location of the spa sanitizer.

ACCEPTED  
with COMMENTS  
EPA Letter Dated:

FEB 16 2006

Under the Federal Insecticide,  
Fungicide, and Rodenticide Act as  
amended, for the pesticide,  
registered under EPA Reg. No.

67712-15

Note: Bracketed [ ] information is optional text/picture/diagram. Text separated by a forward slash (/) denotes—and/or—options.  
Braced { } text is for administrative purposes only and will not appear on the printed label.

11 722

Product name: Nature<sup>2</sup> Spa  
EPA Reg. No. 67712-x  
02/26/04

{language/pictures/diagrams on this page are optional and may appear on any panel of the carton label in any combination}



Cartridge installs in seconds

1. Remove handle core from filter.
2. Insert the {insert product name} cartridge into handle (turn to lock in place).
3. Replace handle core in filter.

ACCEPTED  
with COMMENTS  
EPA Letter Dated:

FEB 16 2006

Under the Federal Insecticide,  
Fungicide, and Rodenticide Act as  
amended, for the pesticide,  
registered under EPA Reg. No.

67712-15

12 8 22



# ZODIAC



**SPA**  
Mineral Sanitizer  
for Spas

## Owner's Manual

EPA Reg. No. 67712-RL

*{Supplementals will insert their company name and logo}*

EPA Est. No. 67712-FL-001

**IMPORTANT: Spa Owner, save this manual!  
Installer, leave this manual with the spa owner!**

Nature² Spa has been designed to sanitize spas up to 500 gallons.  
*{Safety Instructions are optional}*

### Safety Instructions Important Information

Please read prior to  
instillation



#### ATTENTION

Failure to heed the following can result in  
permanent injury, or drowning.

#### EQUIPMENT UNDER PRESSURE

- Always turn spa off prior to installing or changing Nature² Spa. Your spa system is operated under pressure and the pressure must be released before you begin work. Please see your spa owner's manual for further instructions.

#### PREVENT CHILD DROWNING

- Do not let anyone, especially small children, sit, step, lean or climb on any equipment installed as part of your spa's operational system.

#### LOW CHLORINE RECIPE

- You must strictly follow the Nature² Spa recipe included in this manual to maintain proper water chemistry and avoid health hazards. Failure to follow these instructions can lead to sickness from bacteria and other noxious organisms.



#### CAUTION

*{the precautionary statement and first aid are optional}*

#### PRECAUTIONARY STATEMENT

#### HAZARDS TO HUMANS AND DOMESTIC ANIMALS

#### CAUTION

In the unlikely event that a cartridge breaks, mineral media should not be ingested by humans or animals as it may cause gastric distress.

#### FIRST AID

IF INGESTED: Call poison control center or doctor immediately for treatment advice.

ACCEPTED  
with COMMENTS  
EPA Letter Dated

FEB 16 2006

Under the Federal Insecticide,  
Fungicide, and Rodenticide Act,  
amended, for the pesticide,  
registered under EPA Reg. No.

67712-15

[The Nature² Spa is designed only for residential portable spas.]

13 3 22

**[WE ASK YOU TO TAKE THE TIME TO GET FAMILIAR WITH THIS MANUAL.]**

[Thank you for purchasing Nature<sup>2</sup> Spa. We believe the more you know, the more enjoyable your family's bathing experience will be—and the more you will reduce the time, effort and cost of maintaining your spa. Spa owners who switch from conventional chemical programs to the Nature<sup>2</sup> Spa spend less time maintaining their spa. Every spa has its own characteristics of water type, amount of sunlight, etc. The recipe will help insure good water quality for your spa. Remember, your authorized Nature<sup>2</sup> Spa dealer *{supplementals may insert appropriate dealer language}* can provide professional advice and service.]

*{Optional Table of Contents, page numbers may change}*

**CONTENTS**

	<b>PAGE</b>
Safety Instructions	1
Start Up	2
Balance the Water	3
Install the Nature <sup>2</sup> Spa	3
Recipe	4
Provide Filtration/Circulation	5
Nature <sup>2</sup> Spa Replacement Intervals	5
Disposal	5
Troubleshooting	6
Limited Warranty	10

ACCEPTED  
with COMMENTS  
EPA Letter Dated:

FEB 16 2006

Under the Federal Insecticide,  
Fungicide, and Rodenticide Act as  
amended, for the pesticide,  
registered under EPA Reg. No.

67712-15

**Directions for Use:**

It is a violation of Federal law to use this product in a manner inconsistent with its labeling.

**Nature<sup>2</sup> Compatibility**

Nature<sup>2</sup> Spa can be used with all types of spa chemical treatments available **except bromine and bromide based chemicals, biguanide products (Baquacil<sup>1</sup>, BaquaSpa<sup>1</sup>, Softswim<sup>2</sup> or Revacil<sup>3</sup>) [and copper based algaecides].**

**Important:** When converting either a biguanide or bromine treated spa to Nature<sup>2</sup> Spa, the spa must be completely drained and refilled. Then follow the Nature<sup>2</sup> Spa start-up procedure below.

*{The following optional compatibility statement may be used in place of the above language}*

**Attention**

Not to be used with product containing Bromine, Sodium bromide, or biguanides. If these products are being used, be sure to drain and refill with fresh water.

**Start-Up**

- Before starting up a new Nature<sup>2</sup> Spa, clean debris and algae out of the spa and spa equipment.

**Important:** Do not install the new Nature<sup>2</sup> Spa until the spa water is clean and chemically balanced.

- Balance spa water before installing Nature<sup>2</sup> Spa.
  - pH 7.2-7.6
  - Calcium Hardness 200-400 ppm
  - Total Alkalinity [(TA)] 80-120 ppm
  - [Total Dissolved Solids (TDS) 300-2000 ppm]
  - [Test for iron, copper and manganese – add a sequestering agent per instructions if present.]

[Consult with your Nature<sup>2</sup> dealer for specific water balance instructions.]

<sup>1</sup> A Trademark of Zeneca, Inc.

<sup>2</sup> A Trademark of BioLab, Inc.

<sup>3</sup> A Trademark of Mareva, Inc

14 8 22

{The following "Balance the Water" section is optional}

## Balance the Water

To find out if your ~~spa~~ water is balanced: SPA

- take a water sample to your dealer to be tested regularly, or
- ask your dealer to recommend a ~~spa~~ test kit for water balance.

**Element:** pH

**Range:** 7.2-7.6

**If it's too low:** The surface of your spa can become etched. Metal parts in the pump and plumbing will corrode.

**How to fix:** Add pH increaser.

**If it's too high:** "Scale" forms on the surface of your spa. The water can become cloudy. Equipment can become damaged.

**How to fix:** Add pH decreaser.

**Element:** Calcium Hardness

**Range:** 200-400 ppm

**If it's too high:** Rough, discolored deposits ("scale") will form on the spa surface and inside spa equipment.

**How to fix:** Drain or dilute the spa water. Consult your dealer.

**Element:** Total Alkalinity

**Range:** 80-120 ppm

**If it's too low:** It provides no buffer so that you constantly get fluctuating pH readings, which can damage equipment and spa surfaces

**How to fix:** Use an alkalinity increaser.

**If it's too high:** The water becomes cloudy or milky white.

**How to fix:** Add acid to bring alkalinity down.

## Install the Nature<sup>2</sup> Spa

- 1 Drain and refill your spa. Balance water per spa manufacturer guidelines.
- 2 Install the Nature<sup>2</sup> Spa after water is balanced. Refer to your Nature<sup>2</sup> Spa operating manual for additional instructions regarding your particular model's installation.
- 3 Superoxidize the spa water with an EPA registered source of chlorine according to manufacturer's instructions to burn off contaminants and activate cartridge.

**Important:** Initial superoxidation with dichlor<sup>4</sup> is required to burn off contaminants and activate cartridge.

- 4 Run spa according to recommendations supplied to you by the manufacturer of your spa.

{Optional Installation(start-up) instructions}

{Insert name} cartridge:

1. Add 1 ½ tablespoons of dichlor<sup>4</sup> to spa per 250 gallons (approx. 1000 liters).

Note: 1 ½ tablespoons is approximately ¾ oz or 24 grams.

[If adding sequestering agent, wait 48 hours before adding {insert product name}.]

Do not enter the spa if the free available chlorine residual is over 5 ppm.

ACCEPTED  
with COMMENTS  
EPA Letter Dated:

FEB 16 2006

<sup>4</sup> Sodium dichloroisocyanurate dihydrate

Under the Federal Insecticide,  
Fungicide, and Rodenticide Act as  
amended, for the pesticide,  
registered under EPA Reg. No.

67712-15

**[Recipe]**

[There is one recipe for maintaining clean, clear, sanitized water with minimum time and effort.  
This recipe provides the easiest and most economical way to care for your Nature<sup>2</sup> spa.]

{The low chlorine recipe is optional language}

**Low-Chlorine Recipe**

**Ingredients:**

- Nature<sup>2</sup> Spa
- Non-chlorine oxidizer (MPS<sup>5</sup>)<sup>6</sup>
- Nature<sup>2</sup> Spa Test Strips<sup>7</sup>, or equivalent, (MPS<sup>5</sup>, pH, total alkalinity)
- pH, hardness and total alkalinity adjusting chemicals
- Dichlor<sup>4</sup>, EPA registered source

{This section is required}

**When:                      What to do:**

<b>Every day</b>	Run spa according to recommendations supplied to you by the manufacturer of your spa.
------------------	---

<b>Before each use</b>	Test the water with the Nature <sup>2</sup> Spa Test Strip (or equivalent). If the MPS <sup>5</sup> level is low, add 1 tablespoon of MPS <sup>5</sup> to spa per 250 gallons (approx. 1000 liters). (Note: 1 tablespoon is approximately ½ ounce or 16 grams) Use the Nature <sup>2</sup> Spa Test Strip (or equivalent) to test the spa water after each addition of MPS <sup>5</sup> . If the test strip indicates levels below the OK range, add 1 tablespoon MPS <sup>5</sup> to spa per 250 gallons and re-test. Enter spa only after test strip indicates a sufficient level of MPS <sup>5</sup> .
------------------------	---

<b>After each use</b>	Add 1 tablespoon of MPS <sup>5</sup> to spa per 250 gallons (approx. 1000 liters)
-----------------------	---

<b>Once per week</b>	Adjust the pH, total alkalinity and hardness as needed. A convenient way to test pH and total alkalinity is the use of the Nature <sup>2</sup> Spa Test Strip.
----------------------	--

<b>Every 4 [6] months</b>	Drain and refill your spa. Replace Nature <sup>2</sup> Spa, repeat sanitizer start-up.
---------------------------	--

<b>As needed</b>	Shock treat with 1.5 tablespoons of an EPA registered source of dichlor <sup>4</sup> per 250 gallons (approx. 1000 liters) to remedy problems which may occur when bathing loads are high, when successive MPS <sup>5</sup> test strip reading indicate high demand, when water appears hazy or dull, when unpleasant odors or eye irritation occur, after heavy wind and rainstorms or if foam develops.
------------------	---

ACCEPTED  
with COMMENTS  
EPA Letter Dated:  
FEB 1 6 2006

<sup>5</sup> Potassium peroxymonosulfate  
<sup>6</sup> MPS may cause a lowering of the pH and total alkalinity of your spa water. Please monitor pH and total alkalinity at least once per week and adjust accordingly.  
<sup>7</sup> Nature<sup>2</sup> Spa Test Strips are available at your local Zodiac Nature<sup>2</sup> Dealer

Under the Federal Insecticide, Fungicide, and Rodenticide Act as amended, for the pesticide, registered under EPA Reg. No. 67712-15

16 8 22

**Note:** As an alternative to MPS<sup>5</sup>, an EPA registered source of dichlor<sup>4</sup> may be substituted: 1 tablespoon dichlor<sup>4</sup> = approximately 3 tablespoons MPS<sup>5</sup>.

**Important:** Perform start-up procedures for spas which have been unused or unattended. The Nature<sup>2</sup> Spa is not to be used with products containing bromine, sodium bromide or biguanides. If these products are being used, BE SURE TO DRAIN AND REFILL SPA WITH FRESH WATER.

*(This section is optional)*

**Provide Filtration/Circulation**

To manage: You need to:

**Circulation** Follow the manufacturer's directions for keeping the circulating pump in good working order and operate it at least four hours a day. Consult your Nature<sup>2</sup> dealer for optimum run times.

**Filtration** Check the spa's filter periodically and clean it as recommended by the manufacturer.

**Nature<sup>2</sup> Spa Replacement Intervals**

[Use the month indicator decal to identify the date on which the cartridge should be replaced. Always turn spa off prior to installing or changing Nature<sup>2</sup> Spa. Your spa is operated under pressure and the pressure must be released before you begin work. Please see your spa owner's manual for instructions.]

A cartridge lasts four (4) [six (6)] months. The cartridge should not be used longer than four (4) [six (6)] months.

**Disposal**

After four [six] months of use, discard Nature<sup>2</sup> Spa in household trash. Do not save the cartridge for re-use. The cartridge is manufactured with the mineral media sealed inside. In the unlikely event a cartridge breaks, remove it and vacuum out any media introduced into the spa.

ACCEPTED  
with COMMENTS  
EPA Letter Dated:

FEB 16 2006

Under the Federal Insecticide,  
Fungicide, and Rodenticide Act as  
amended, for the pesticide,  
registered under EPA Reg. No.

67712-15



17 8 22

# Troubleshooting Guide

	Problem	What to look for
<b>Cloudy Water</b> Frequently caused by improper start up. See section on Start Up and install the Cartridge	Spa Filtration	Slow filter turnover rates
	Algae Growth	Hazy spa water; may have slightly green appearance
	Unbalanced water	1. High hardness 2. High TDS (total dissolved solids) 3. High pH 4. High total alkalinity
<b>Algae</b> Algae may be caused by insufficient levels of oxidizer and/or inadequate water circulation	Green or white algae	Pea green to white color; attaches to spa walls; sometimes colors the entire body of water
	<b>Note:</b> Do not use algae treatments containing [either copper or] sodium bromide	
<b>Stains</b>	Blue/green	Copper or iron from spa equipment corrosion or water supply
	Red /brown	Iron or manganese from equipment corrosion or water supply
	Black	Manganese in water supply
	Metal tarnishing	High native mineral content in water; unbalanced water
<b>Scale</b>	Crusty deposits on spa surfaces	High pH and high total alkalinity
		High TDS (total dissolved solids) or high hardness

ACCEPTED  
with COMMENTS  
EPA Letter Dated:  
FEB 16 2006

Under the Federal Insecticide, Fungicide, and Rodenticide Act as amended, for the pesticide, registered under EPA Reg. No. 67712-15

18 8 22

**Treatment**

---

- 1 Backwash and clean filter
  - 2 Run filter for 24 hours
  - 3 Increase run time per day
- 

Superchlorinate water with an EPA registered source of dichlor<sup>4</sup> according to manufacturer's instructions.

---

Balance the spa water

---

- 1 Check pH and adjust if necessary
- 2 Superchlorinate water with an EPA registered source of dichlor<sup>4</sup> according to manufacturer's instructions.
- 3 Repeat steps 1 and 2 until algae is gone

ACCEPTED  
with COMMENTS  
EPA Letter Dated:

FEB 16 2006

Under the Federal Insecticide,  
Fungicide, and Rodenticide Act as  
amended, for the pesticide,  
registered under EPA Reg. No.

67712-15

- 
- 1 Adjust pH and total alkalinity to ideal ranges.
  - 2 Vigorously brush stained areas
  - 3 Add sequestrant [per installation instructions]
  - 4 Run filter
  - 5 Twelve hours later, superchlorinate the spa
  - 6 Test and balance water
  - 7 Test spa water for dissolved metals
- 

Clean with soft cloth and mild detergent. Test water for minerals; use a sequestrant; maintain water balance

---

Adjust pH and total alkalinity to ideal ranges

---

- 1 Replace a volume of spa water with water low in hardness and dissolved solids.
- 2 Use sequestrant [per installation instructions] to prevent scale buildup if high hardness levels are a continuing problem.
- 3 If remedial action has been taken, and problem still persists, drain and refill spa.

19 8 22

{Optional troubleshooting section}

### Troubleshooting

If you have never tested your water conditions, or if your water source has changed, you will need to retest your water to determine your water's basic characteristics. When testing your water, always start with clean, fresh water. When using {insert name}, DO NOT follow the standard Water Care instructions in your Spa Owner's Manual. Please use the following instructions for the water chemistry start-up.

**Step 1:** Test your "source water" for Calcium Hardness, Total Dissolved Solids (TDS) and metals (i.e. Iron, Copper, Manganese). Consult with an authorized {insert dealer name} Dealer if you need assistance testing your "source water". Knowing these three "source water" conditions is important to properly balance your spa water. Properly balanced water can greatly prolong the longevity of your spa's equipment and make it easier to maintain clean clear water. The following three "source water" conditions typically should be tested once per week, and should be retested if you move or if your "source water" changes.

- a) Calcium Hardness levels should be between 200 and 400 ppm (parts per million). If it is not, use Calcium - Hardness Increaser (Calcium Chloride) to raise the Calcium Hardness level accordingly. (Acceptable range is 200 -400 ppm).
- b) TDS should be above 300 ppm. Example: If your Calcium Hardness is 200 ppm and the TDS is only 200 then you may add 1.5 oz. Sodium Chloride (common table salt) to raise TDS to the 300 ppm (minimum ppm). 1 oz. of Sodium Chloride per 100 gallons of spa water will raise TDS by approx 63 ppm. (Acceptable range is 300 - 2000 ppm).
- c) If metals are present add recommended dosage of a sequestrant agent, while water is being added to the spa. Wait 48 hours after adding sequestrant before installing cartridge.

**Tip: Estimated Equivalents:**

- 3 teaspoons = 1 tablespoon
- 2 tablespoons = 1 ounce

**Step 2:** Test the Total Alkalinity (TA) and pH utilizing Test Strips. With the jets turned off, dip the test strip 12-18 inches into the water and swirl three times for an accurate reading (be sure to follow the procedures as detailed on the container). TA should read between 80-120 ppm and pH should read between 7.2-7.6. Please use the following guidelines should you need to make adjustments:

a) Water Condition:

**Total Alkalinity above 120 ppm**

Add 1 ounce of pH/Alkalinity Decreaser with the jets turned off, into the center of the spa. Wait 1 minute, then turn jets on and run at high speed for at least 5 minutes. Turn jets off, retest and repeat procedure until the TA reads close to 100 ppm.

**Tip:** When Total Alkalinity is above 120 ppm the pH will change slower than the Total Alkalinity.

b) Water Condition:

**Total Alkalinity below 80 ppm**

Add 1 ounce of pH/Alkalinity Increaser with the jets turned on high speed. Continue running jets on high speed for at least 5 minutes. Turn jets off, retest and repeat procedure until the TA reads close to 80 ppm.

**Tip:** When Total Alkalinity is below 80 ppm the pH will change faster than the Total Alkalinity.

c) Water Condition:

**pH above 7.6**

Test and adjust Total Alkalinity per the above instructions then test and balance the pH. Add 1 ounce of pH/Alkalinity Decreaser with the jets turned to high speed. Continue running jets on high for at least 5 minutes. Turn jets off, retest and repeat procedure until the pH reads between 7.2 - 7.6.

d) Water Condition:

**pH below 7.2**

Test and adjust Total Alkalinity per the above instructions then test and balance

ACCEPTED  
with COMMENTS  
EPA Letter Dated:

FEB 16 2006

Under the Federal Insecticide,  
Fungicide, and Rodenticide Act  
amended, for the pesticide,  
registered under EPA Reg. No.

67712-15

20 7 22

the pH. Add 1 ounce of pH/Alkalinity Increaser with the jets turned to high speed. Continue running jets on high for at least 5 minutes. Turn jets off, retest and repeat procedure until the pH reads between 7.2 – 7.6.

**Step 3:** Add 1.5 tablespoons dichlor<sup>4</sup> to spa per 250 gallons (approx. 1000 liters).

ACCEPTED  
with COMMENTS  
EPA Letter Dated:

FEB 16 2006

Under the Federal Insecticide,  
Fungicide, and Rodenticide Act as  
amended, for the pesticide,  
registered under EPA Reg. No.

67712-15

21 7 22

{This section is optional}

## Limited Warranty

### NATURE<sup>2</sup> SPA LIMITED WARRANTY

The limited warranties contained within this document are the only warranties given with your Nature<sup>2</sup> Spa and supercede any prior warranties. **All other warranties, expressed or implied, including the implied warranty of merchantability or the implied warranty of fitness for a particular purpose are hereby disclaimed.** Our sole obligation under this warranty, and the purchaser's sole remedy, is limited to repair or replacement of the Nature<sup>2</sup> Spa. The Nature<sup>2</sup> warranty applies to the original owner only.

### THE LIMITED WARRANTIES OF THE NATURE<sup>2</sup> SPA ARE:

Nature<sup>2</sup> Spa is warranted to be free of defects in materials and to perform satisfactorily for a period of four [six] months from the date of purchase. Nature<sup>2</sup> Spa is warranted not to cause staining in your pool. This limited warranty requires that you exercise reasonable care of your spa and keep water in balance at all times. This limited warranty does not cover discoloration to chromium fittings. This warranty does not cover cartridges used with any biguanide products such as BaquaSpa<sup>®</sup>, Baquacil<sup>®</sup> or Soft Swim<sup>®</sup> or any products containing Bromine or Bromine-based chemicals. If the cartridge is defective and does not perform satisfactorily for the entire four [six] months, we will make a prorata rebate based on your actual period of use. You are responsible to pay the below-indicated percentage on the then applicable retail cost: <1 month-0%; 1-2 months-25%; >2-3 months-50%; >3-4 months-75%.

### EXCLUSIONS FROM WARRANTY

Nature<sup>2</sup> Spa is designed for use on residential portable spas up to 500 gallons. If it is used in any other application, the warranty is void, and the purchaser and/or spa owner releases the manufacturer from any and all claims related to the use of the Nature<sup>2</sup> Spa.

This warranty does not cover problems arising in whole or in part from purchaser's negligence, misuse or abuse, improper maintenance or storage, accident, improper installation, improper application, failure to follow all appropriate safety precautions, Acts of God, abnormal weather conditions, damage from plants or animals, and improper use of chemicals.

This warranty specifically excludes all incidental or consequential damages, except where state law requires them to be paid. This warranty gives you specific rights. You may have other rights that vary from state to state.

### TO SUBMIT A CLAIM

Report claims to Zodiac Pool Care, Inc. by calling 1-888-537-6657. Only the original purchaser may submit a claim under this limited warranty. Claims must be accompanied by an original purchase receipt.



Zodiac Pool Care, Inc.  
3026 NW 25th Avenue  
Fort Lauderdale, FL 33309  
1-800-NES-PURE  
www.zodiac.com

Nature<sup>2</sup> is a registered trademark of Zodiac Pool Care, Inc.  
© Copyright 2004 Zodiac Pool Care, Inc.

Printed in the USA  
WXXXXX

ACCEPTED  
with COMMENTS  
EPA Letter Dated:

FEB 16 2006

Under the Federal Insecticide,  
Fungicide, and Rodenticide Act as  
amended, for the pesticide,  
registered under EPA Reg. No.

6 7712-15

{Optional language}

22 8 22

{Insert product name} Notes:

- Replace the {insert product name} cartridge every six months. Refer to the Date Ring to help you remember when it is time to replace it.
- As {insert product name} does not eliminate the need to maintain the other aspects of optimum water treatment, we also suggest using Enzyme Formula on a weekly basis to reduce the occurrence of waterlines on the shell.
- The combination of {insert product name} plus an oxidizer is designed to significantly reduce the need for conventional sanitizers. It is important to realize, however, that any sanitizer or bactericide can be over-taxed, meaning that an EPA registered source of chlorine may need to be used from time to time in small dosages.
- {Insert product name} has a relatively neutral pH (7.4) and will help minimize the undesirable accumulation of high total dissolved solids (TDS) commonly experienced with the use of conventional chemical sanitizer maintenance schedules.
- Stain & Scale and Metal Sequestant products are to be used only upon start-up and/or water changes, AT LEAST 48 HOURS PRIOR TO INSTALLING THE {INSERT PRODUCT NAME} CARTRIDGE, as they may reduce the effectiveness of {insert product name}.
- If the water is significantly cloudy or any odor is present in the water, do not enter the spa. Test and balance TA and pH as needed, and add 1.5 tablespoons dichlor<sup>4</sup> to spa per 250 gallons (approx. 1000 liters). Do not enter the spa if the free available chlorine residual is over 5 ppm.
- Water clarity is obtained by properly balanced water and good filtration. If either is not correct, the water may appear cloudy or dull. Check the spa's filter periodically and clean it as recommended by the manufacturer.
- Remember that hot water can carry many forms of bacteria, but the combination of {insert product name} plus an oxidizer, like Chlorine and Bromine, is not a guarantee for "bacteria-free" water. Maintaining your spa in accordance with manufacturer's suggested guidelines will help ensure clear and enjoyable water.

ACCEPTED  
with COMMENTS  
EPA Letter Dated:

FEB 16 2006

Under the Federal Insecticide,  
Fungicide, and Rodenticide Act as  
amended, for the pesticide,  
registered under EPA Reg. No.

67712-15