

67712-5

07-05-2007

1/28



UNITED STATES ENVIRONMENTAL PROTECTION AGENCY  
WASHINGTON, D.C. 20460

070507

OFFICE OF  
PREVENTION, PESTICIDES AND  
TOXIC SUBSTANCES

Ms. Sally Hayes  
Scientific and Regulatory Consultants, Inc.  
Regulatory Agent for,  
Zodiac Pool Care, Inc.  
2028 N.W. Beach Pool, Florida 33069

Mail to: Attn: Sally Hayes  
SRC Scientific and Regulatory Consultants, Inc.  
P. O. Box 1014  
Columbia City, IN 46725

Subject: Nature' AG  
EPA Registration Number 67712-5  
Your Amendment Dated March 6<sup>th</sup>, 2006  
EPA Received Date March 7<sup>th</sup>, 2006

The amendment referred to above, submitted in connection with registration under the Federal Insecticide, Fungicide, and Rodenticide Act, FIFRA, as amended, to expand existing labeling claims is acceptable provided you make the following labeling revisions:

Based on the efficacy review of the product labeling, the following revisions must be made to the proposed labeling:

**EFFICACY CLAIMS**

Under the "Efficacy Claims" section, make the following labeling revisions to read as follows:

1. The Agency standards, as described in DIS/TSS-12, are to determine the efficacy of swimming pool water disinfectants, not a sanitizer. If you prefer to retain sanitizer claims, references to disinfection must be removed from the label, as these claims are not analogous.

7/28

2. Spell Out "CRT" on the label, before using the abbreviation.
3. The contact time of 30 seconds is false and misleading, as the circulating time for the volume of water in a swimming pool exceeds this timeframe.
4. Delete "overpowers" and "restrains" from the proposed label.

#### **CONTROLLED RELEASE TECHNOLOGY CLAIMS**

5. Under the "Controlled Release Technology" section, delete "overpowers" and "restrains" from the label.

#### **INNOVATIVE RELEASE TECHNOLOGY CLAIMS**

6. Under the Innovative Technology section, delete the following claims:

Remove the following claims from the labeling:

"21<sup>st</sup> century mineral technology"  
"Advanced"  
"Cutting edge for pool technology"  
"Mineral technology"  
"Mastering the elements"  
"Natural mineral technology"  
"Nature is the only, first mineral system"  
"Start changing the way you swim.....naturally"  
"The first[EPA registered]pool disinfectant[system] based on silver and copper mineral"  
"The original [mineral][pool]sanitation"  
"The original mineral pool disinfectant [sanitizer technology]"  
"With standard chlorine products for swimming pools, EPA has NOT approved a chlorine level of 0.5 ppm without using minerals"

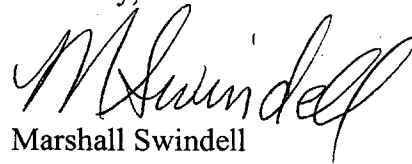
7. Under "Water Attribute" section, delete "overpowers" and "restrains" from the product labeling.

A stamped copy of the labeling is enclosed for your records.

3/28

If you have questions concerning this letter, please contact Karen M. Leavy-Munk at (703)-308-6237.

Sincerely,

A handwritten signature in cursive script, appearing to read "M. Swindell".

Marshall Swindell

Product Manager 33

Regulatory Management Branch I

Antimicrobial Division(7510P)

{Optional language/pictures/diagrams that may appear on any panel of the carton label in any combination}

4/28

ACTIVE INGREDIENTS:

Metallic Silver\*\* .....2.33%  
Copper Sulfate pentahydrate\*\*\* .....9.43%  
OTHER INGREDIENTS .....88.24%  
TOTAL.....100.00%

\*\*From Silver Nitrate

\*\*\* Copper (Cu) as metallic ... 2.40%

\*The Nature<sup>2</sup> System consists of the patented Nature<sup>2</sup> technology<sup>†</sup> used in conjunction with a chlorine delivery device or 0.5ppm of an EPA registered chlorine pool product.

<sup>†</sup> Nature<sup>2</sup> technology consists of the minerals silver and copper.

KEEP OUT OF REACH OF CHILDREN

CAUTION

SEE [BACK, SIDE, REAR] PANEL FOR ADDITIONAL PRECAUTIONARY STATEMENTS



**ZODIAC**



Mineral Sanitizers  
for Pools

ACCEPTED  
with COMMENTS  
in EPA Letter Dated:

070507

Under the Federal Insecticide,  
Fungicide, and Rodenticide Act as  
amended, for the pesticide,  
registered under EPA Reg. No.

67712-5

Nature<sup>2</sup>® AG

EPA Reg. No. 67712-5

EPA Est. No. 67712-FL-001

NET CONTENTS: [ONE CARTRIDGE] [ONE UNIT]

Note: Bracketed [ ] information is optional text/picture/diagram. Text separated by a comma (,) denotes and/or options.  
{Bracket Text} is for administrative purposes. Punctuation, text size, text font, text color, capital letters, lower case letters, italics, bold and underline may vary on final printed labels. Spelling may vary when alternate spelling is acceptable; for example "algaecide" or "algicide"

030607

{Optional language/pictures/diagrams that may appear on any panel of the carton label in any combination}

5/28

#### CHANGE THIS CARTRIDGE EVERY [SIX, FOUR] MONTHS

{one of the following statements will appear}

Use of this cartridge [for] longer than [four, six] continuous months will void the warranty. Discard [the, this] cartridge at the end of [six, four] months.

{or}

Nature<sup>2</sup> AG lasts one season (up to [six, four] months). Discard Nature<sup>2</sup> AG at the end of the season.

#### PRECAUTIONARY STATEMENT

##### Hazards to Humans and Domestic Animals

##### Caution

In the unlikely event that a cartridge breaks, mineral media should not be ingested by humans or animals as it may cause gastric distress.

#### FIRST AID

IF INGESTED: Call poison control center or doctor immediately for treatment advice.

#### DISPOSAL

After [six, four, one season] of use, discard [the cartridge, Nature<sup>2</sup>, {product name}] in household trash. Do not save [the cartridge, Nature<sup>2</sup>, {product name}] for re-use. [The] [cartridge, Nature<sup>2</sup>, {product name}] is manufactured with the mineral media sealed inside. In the unlikely event [it, the cartridge] breaks, remove it and vacuum out any media introduced into the pool [water].

#### DIRECTIONS FOR USE

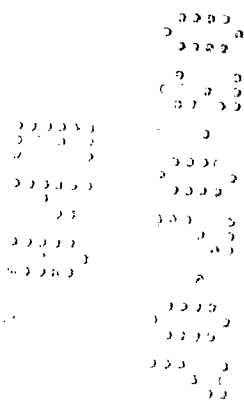
It is a violation of Federal Law to use this product in a manner inconsistent with its labeling.

See owner's manual inside box for directions for use.

Zodiac Pool Care, Inc.  
2028 NW 25th Avenue  
Pompano Beach, FL 33069

© 2006 Zodiac Pool Care, Inc.

{insert part number}



Note: Bracketed [ ] information is optional text/picture/diagram. Text separated by a comma (,) denotes and/or options. {Bracket Text} is for administrative purposes. Punctuation, text size, text font, text color, capital letters, lower case letters, italics, bold and underline may vary on final printed labels. Spelling may vary when alternate spelling is acceptable; for example "algaecide" or "algicide"

030607

## Efficacy Claims

[4, 6 month] algae [control, treatment, preventative].

[4, 6] month Nature<sup>2</sup> cartridge meets [the] EPA [pool] efficacy requirements.

Algae control for [4, 6] months [for the life of the cartridge]

Algae treatment system

[Around, Round, 24/7] the clock algae [fighter, fighting]

[Around, Round, 24/7] the clock [disinfection, disinfecting, sanitation, sanitization]

[Around, Round] the clock algae [treatment, control, preventative] [for your swimming pool]

[Constant, Consistent, Continual, 24/7] algae [control, treatment] [for your swimming pool]

[Disinfects, Sanitizes, Works] [around, round, 24/7] [the clock]

Defend against algae [with] [the] [Nature<sup>2</sup>] [system\*]

Destroys bacteria and algae growth with CRT

[Hassle, Trouble] free algae control

[Effectively] [Fights, combats, defends against, inhibits, suppresses, restrains, resists, overpowers, controls] algae [for [4, 6] months]

Keeps algae in check [for [4, 6] months]

In combination with lower chlorine levels, [Nature<sup>2</sup> technology<sup>†</sup>, {insert product name}] is proven to [effectively] control[s] [typical, common] swimming pool algae

Keep algae [at bay, under control] for [4, 6] months

Kills [common, typical] [swimming] pool bacteria [in 30 seconds, quickly, in a hurry]

[Insert product name] meets [the] EPA's [pool] efficacy requirements [for a period of [four, six] months].

[Nature<sup>2</sup> technology<sup>†</sup>, {product name}] and chlorine work together to effectively [inhibit, reduce, suppress, fight, control] bacteria and algae

[Nature<sup>2</sup> technology<sup>†</sup>, {product name}] effectively [reduces, inhibits, suppresses, controls] bacteria and algae

[Nature<sup>2</sup> technology<sup>†</sup>, {product name}] [Fights, combats, defends against, inhibits, suppresses, restrains, resists, overpowers] algae growth

[Nature<sup>2</sup>, {product name}] minerals help rid the water of harmful bacteria

[Nature<sup>2</sup>, {product name}] [patented] mineral[s] [technology<sup>†</sup>] destroy bacteria with a controlled release formula that lasts [4, 6] months

["Product name" features] Nature<sup>2</sup> technology<sup>†</sup> [which] is an effective process that sanitizes pool water using minerals and just 0.5ppm chlorine.

[Proven] control of [common] [swimming pool] bacteria [and] [algae]

Reduces [common] [swimming pool] bacteria [and] [algae]

Sanitize and inhibit [suppress, control] algae [the Nature<sup>2</sup> way!]

[Silver, Nature<sup>2</sup> technology<sup>†</sup>, {insert product name}] [with, and] [chlorine] kills bacteria

[Silver, Nature<sup>2</sup> technology<sup>†</sup>, {insert product name}] is an effective bactericide [and works well with oxidizing agents]

[Silver, Nature<sup>2</sup> technology<sup>†</sup>, {insert product name}] kills bacteria and lowers chlorine usage.

The Nature<sup>2</sup> System\* [with CRT] effectively sanitizes your pool.

## **Ease of Use**

Algaecide [Algae] and bactericide [bacteria] [control] [all] in one [cartridge]

[Automatic], [Automatically] [dispensing of, dispenses] minerals [and chlorine] [automatically] {the chlorine claim for use with models paired with chlorine dispensers/generators}

Automatically dispenses minerals [and chlorine] {the chlorine claim for use with models paired with Zodiac's salt water generator}

Conveniently simple

Effortless algae [management, control]

Eliminate daily dosing

Engineered [for, to last] [4, 6] months [for your size] [in your] [pool]

Engineered to control bacteria and algae for [4, 6] months

Enjoy the water

Enjoy your pool [with less work]

Enjoy your pool again – eliminate the need for daily dosing

Install in seconds [– lasts [six, four] months]

Installation is simple

[It works [to control algae]] so you don't have to

[It] does the work for you

[It] works while you [sleep, play, swim]

Less time maintaining, more time relaxing!

[Maintenance, management] free algae control.

[Nature<sup>2</sup>, technology<sup>†</sup>, {product name}] minerals require no manual dosing

No more daily maintenance with [replacement] products that last weeks or months at a time

One [easy] step [to] algae [control, management] [in your swimming pool]

[Reclaim, regain] the fun. [Reduce the work.] [Increase your pool's life]

Save time

Simple, Do-It-Yourself Installation

Simple, [effective, efficacious], cost effective

Simply discard at the end of the season

Simply replace the cartridge every [six, four] months

Simply [replace, discard] the cartridge every [six, four] months

Spend less time shocking your pool

Spend more time in your pool, less time adding chlorine

Take back the fun of your pool by reducing the work and increasing the pool's life

Twice as nice – bacteria and algae control in one cartridge

## **Controlled Release Technology**

Controlled copper release prevents pool staining

Controls coppers release to prevent pool staining

Controlled release [of] algaecide

Note: Bracketed [ ] information is optional text/picture/diagram. Text separated by a comma (,) denotes and/or options. {Bracket Text} is for administrative purposes. Punctuation, text size, text font, text color, capital letters, lower case letters, italics, bold and underline may vary on final printed labels. Spelling may vary when alternate spelling is acceptable; for example "algaecide" or "algicide"

{Optional language/pictures/diagrams that may appear on any panel of the carton label in any combination}

8/28

Controlled released algae treatment [technology]

Controlled Release Technology

Controlled Release Technology (CRT) controls the release of silver and copper mineral ions into your pool water.

Controlled release technology – no [copper, or, silver] stains, guaranteed!

[Manage, fight, combat, defend against, inhibit, suppress, restrain, resist, overpower, control] algae with controlled release technology [CRT]

[Nature<sup>2</sup>, technology<sup>†</sup>, {product name}] controls release to prevent staining

## **Innovative Technology**

21<sup>st</sup> century mineral technology

[Advanced, Enhanced, Combined] mineral technology

Algae treatment with controlled release technology [CRT]

Alumina [mineral] matrix

[At, On] the cutting edge of pool [water] technology

[At, On] the leading edge of innovation [[and] technology]

Based on mineral technology {product name may be inserted at beginning}

Bromine compatible

[Complete] [Nature<sup>2</sup>] mineral pool care works in all pools

Contains minerals from nature

Contains [silver, copper] [alumina] [from nature] [!]

Copper [a component of] [Nature<sup>2</sup>, technology<sup>†</sup>, {product name}] effectively [inhibits, suppresses, controls, fights] algae [growth]

[Engineered, Patented] mineral[s] [silver] [copper] [alumina] [technology]

Features Nature<sup>2</sup> Technology<sup>†</sup>

In combination with 0.5ppm chlorine, [Nature<sup>2</sup>, technology<sup>†</sup>, {product name}] is as effective [against common swimming pool algae] as chlorine alone

It's Nature<sup>2</sup> Technology<sup>†</sup>

Let [Nature<sup>2</sup>, {product name}] minerals handle the [bulk, majority] of your water sanitation needs

[Manage, fight, combat, defend against, inhibit, suppress, restrain, resist, overpower, control] algae effortlessly

Mastering the elements

Mineral technology for the 21<sup>st</sup> century

Natural mineral harmony

Nature<sup>2</sup> copper [-alumina, mineral] granule [technology<sup>†</sup>]

Nature<sup>2</sup> – it's elemental

Nature<sup>2</sup> [technology<sup>†</sup>, {product name}] controls release of active ingredients

Nature<sup>2</sup> is the [only, first] mineral system containing silver and copper in one cartridge

Nature<sup>2</sup> meets the EPA requirements to lower previously approved safe chlorine levels by up to 50%\* (\*1.0ppm was EPA's previously approved safe level for a stabilized swimming pool).

[Nature<sup>2</sup>] [{product name}][technology<sup>†</sup>, mineral formula] provides silver to destroy bacteria and alumina to help keep the pH in a safe range [without monitoring]

[Providing] innovative technology for over {insert appropriate number} years

Note: Bracketed [ ] information is optional text/picture/diagram. Text separated by a comma (,) denotes and/or options.

{Bracket Text} is for administrative purposes. Punctuation, text size, text font, text color, capital letters, lower case letters, italics, bold and underline may vary on final printed labels. Spelling may vary when alternate spelling is acceptable; for example "algaecide" or "algicide"

Silver destroys bacteria to reduce chlorine use up to 50%\*

\*compared to the minimum EPA approved level of 1.0 for a stabilized swimming pool

[Silver, Nature<sup>2</sup>, {product name}] [minerals] plus 0.5ppm chlorine is as effective as 1.0ppm chlorine

Start changing the way you swim ..... naturally

Swim naturally with mineral technology

Swim naturally with [Nature<sup>2</sup>, mineral, {insert product name}] technology<sup>†</sup>

[Sustained, controlled] algacide release technology

The copper in [Nature<sup>2</sup> technology<sup>†</sup>, {product name}] effectively controls algae

The first [EPA registered] pool disinfectant [system] based on silver and copper mineral[s] [technology]

The Nature<sup>2</sup> System\* is an exclusive patented mineral technology.<sup>†</sup>

<sup>†</sup> Nature<sup>2</sup> technology consists of the minerals silver and copper.

The original [mineral] [pool] sanitation [cartridge, technology]

The original mineral pool disinfectant [sanitizer, technology]

With standard chlorine products for swimming pools, EPA has NOT approved a chlorine level of 0.5ppm without using minerals.

[Zodiac -] [creators of, inventors of, pioneers in] pool mineral technology

[Zodiac -] leading the way in [innovation, innovative technology]

### Product Benefits

Lasts one season (up to [four, six] months)

[Lower chlorine levels] help[s] keep [the] pool pH balanced

Lower chlorine levels help prevent damage to equipment and surfaces

[Meets, Equivalent to, As effective as] [1.0ppm] chlorine [alone] [in pool testing]

Nature<sup>2</sup> [technology<sup>†</sup>] in the presence of low levels of chlorine is proven to effectively control [typical, common] swimming pool algae.

[Nature<sup>2</sup> technology<sup>†</sup>, {product name}] in the presence of 0.5ppm [low levels of] chlorine is [as] effective against common swimming pool algae [as traditional chlorination].

[Nature<sup>2</sup>, technology<sup>†</sup>] reduces chlorine consumption

[Nature<sup>2</sup>, technology<sup>†</sup>, {product name}] requires no sequestrant

[Nature<sup>2</sup>, {product name}] minerals [also] keeps your pH balanced by acting as a neutralizer

No sequestrant required

Reduces chlorine use to just 0.5ppm

Reduces chlorine use up to 50%\* \*Compared to the minimum EPA recommended chlorine levels of 1.0ppm for a stabilized swimming pool

Reduce[s] [your] chlorine use

[Reduces, Inhibits, Suppresses] [typical, common] swimming pool algae [in the presence of [0.5ppm chlorine, low chlorine levels]]

Saves you money

Note: Bracketed [ ] information is optional text/picture/diagram. Text separated by a comma (,) denotes and/or options.

{Bracket Text} is for administrative purposes. Punctuation, text size, text font, text color, capital letters, lower case letters, italics, bold and underline may vary on final printed labels. Spelling may vary when alternate spelling is acceptable; for example "algacide" or "algicide"

## Swimmer Comfort

Enhance[d, s] swimmer comfort.

Reduces potential for stinging eyes, skin irritation and unpleasant odors.

In combination with [0.5ppm chlorine, low[er] chlorine levels], [Nature<sup>2</sup> technology<sup>†</sup>, {product name}] [reduces, lowers] the formation of chloramines, odors and red eyes

[Nature<sup>2</sup>, {product name}] minerals reduce the irritations associated with chlorine like red stinging eyes, faded swimsuits and dry, itchy skin

[Nature<sup>2</sup>, technology<sup>†</sup>, {product name}] reduces [chlorine use] [and] [the formation of chloramines] [that cause[s]] odor and red eyes.

Reduces [faded swimsuits, odor, red eyes]

Reduces chlorine irritations and odors

Reduces dry itchy skin [irritations] associated with chlorine

Reduces irritations [and odors] associated with chlorine [including red stinging eyes, dry itchy skin, faded bathing suits, premature damage to pool equipment or surfaces and unpleasant odors]

Reduces premature damage to pool equipment or surfaces associated with chlorine

Reduces red [stinging] eye[s] irritations associated with chlorine

Reduces unpleasant odors associated with chlorine

Spend the day [in the pool] without worrying about dry, itchy skin, red burning eyes or faded swimsuits

[Nature<sup>2</sup>, system, {product name}] gives you a reliable way to have fresh, clean, clear water in your [family's] pool.

## Water Attributes

Clarif[y, ies] pool water

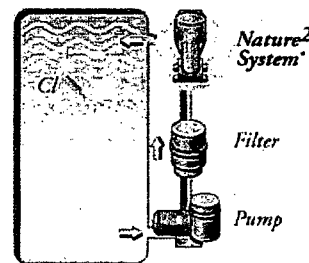
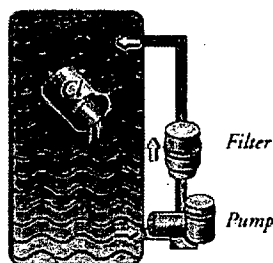
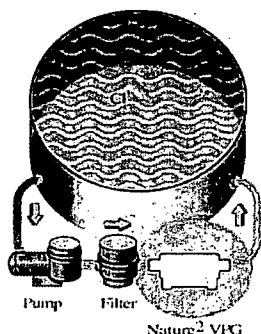
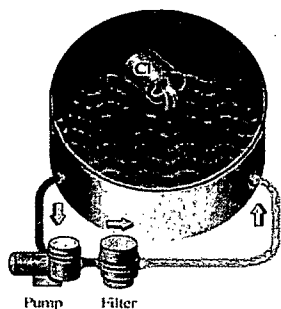
Compare the Difference! {photo dependent on model}

Conventionally treated pool

Nature<sup>2</sup> System\* treated pool

Conventionally treated pool

Nature<sup>2</sup> System\* sanitized pool



For Crystal Clear Water in All Types of Pools

[For] Water that [looks] [and] [feels] luxurious

Guaranteed – no stains!

Improves water quality by

Destroying bacteria for improved clarity

Helping to maintain a neutral pH for softer water

Note: Bracketed [ ] information is optional text/picture/diagram. Text separated by a comma (,) denotes and/or options. {Bracket Text} is for administrative purposes. Punctuation, text size, text font, text color, capital letters, lower case letters, italics, bold and underline may vary on final printed labels. Spelling may vary when alternate spelling is acceptable; for example "algaeicide" or "algicide"

{Optional language/pictures/diagrams that may appear on any panel of the carton label in any combination}

11/28

Makes water brilliantly clear [and] [soft]

[Nature<sup>2</sup>, {product name}] minerals condition the water for extra softness

[Nature<sup>2</sup>, {product name}] minerals make a difference you can see and feel

[Nature<sup>2</sup>, technology<sup>†</sup>, {product name}] controls release to ensure algae control while preventing copper staining

[Nature<sup>2</sup>, technology<sup>†</sup>, {product name}] provides [continuous] algae control [from day [1, one]]

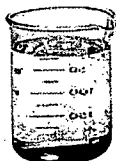
[Nature<sup>2</sup>, technology<sup>†</sup>, {product name}] [manages, fights, combats, defends against, inhibits, suppresses, restrains, resists, overpowers, controls] [pool] copper levels [for stain-free algae control]

[Nature<sup>2</sup>, technology<sup>†</sup>, {product name}] reduces coppers spikes from algaecide products to reduce staining

[Nature<sup>2</sup>, technology<sup>†</sup>, {product name}] [regulates, controls] [the copper in] your swimming pool [copper levels] [providing you with] a no stain guarantee

[Nature<sup>2</sup>, technology<sup>†</sup>, {product name}] releases copper for [immediate], hassle free algae control

Nature<sup>2</sup> water is brilliantly clear and soft



The Nature<sup>2</sup> System\* with CRT improves water quality.

Restore[s] water clarity

No stain guarantee

No stains, guaranteed

The perfect combination for clear pool water

Water feels softer with a crystal clear shine

### General Claims

Assembled in USA from components made in USA, China and Australia

For aboveground pools [5,000 to 17,000] [5,000 - 30,000] gallons

It's compatible. Compatible with most pool maintenance products.\*\*\*\*

\*\*\*\* Do not use [this product, Nature<sup>2</sup>] with copper-based algaecides, [bromine or bromide chemicals,] or Biguanides (Baqacil®, SoftSwim®, Revacil®). Baqacil is a registered trademark of Arch Chemical Inc., SoftSwim is a registered trademark of Chemtura, Inc. Revacil is a registered trademark of Mareva, Inc.

Made in [the] USA {A picture of the US flag may also appear}

[Mineral cartridge] Lasts [six, four] months

Satisfaction guaranteed.

The Nature<sup>2</sup> logo is a registered trademark owned by Zodiac Pool Care, Inc.

This product is covered by one or more of the following U.S. Patents: 4,608,247 4,935,116 5,352,369 372,069

To keep your patented Nature<sup>2</sup> Sanitizer operating properly, it is necessary to change [this, the] cartridge every [six, four] months.

Will not damage your pool equipment.

Note: Bracketed [ ] information is optional text/picture/diagram. Text separated by a comma (,) denotes and/or options. {Bracket Text} is for administrative purposes. Punctuation, text size, text font, text color, capital letters, lower case letters, italics, bold and underline may vary on final printed labels. Spelling may vary when alternate spelling is acceptable; for example "algaecide" or "algicide"

030607

{Optional language/pictures/diagrams may appear on any panel of the carton label in any combination}

12/28

For [5,000 - 30,000 Gallon] [5,000 - 17,000 Gallon] Aboveground Pools

{these part numbers may appear on the respective corresponding label}

[P/N] [W] [22360] [22365] [20120] [28165] [228166] [20131]

{the following vessel/housing names may be used to help consumer determine the correct cartridge for their system}

[Nature<sup>2</sup>]

[Fits all Nature<sup>2</sup> [A] Vessels]

[(Except Nature<sup>2</sup> Limited)]

[Nature2, Vision, Claritec, Clear Vision, EcoSpring, Aquatech, Visipure, White River, Fafco, California, Hawaiian]

{optional cartridge/corresponding vessel checkbox}

Cartridge	Corresponding Vessel
<input type="checkbox"/> G25 10,000 - 25,000 Gallons	Professional G Inground [In-ground] Vessel
<input type="checkbox"/> G35 25,000 - 35,000 Gallons	Professional G Inground [In-ground] Vessel
<input type="checkbox"/> G45 35,000 - 45,000 Gallons	Professional G Inground [In-ground] Vessel
<input type="checkbox"/> M25 5,000 - 25,000 Gallons	Premium M Inground [In-ground] Vessel
<input type="checkbox"/> A30 5,000 - 30,000 Gallons	A Aboveground Vessel

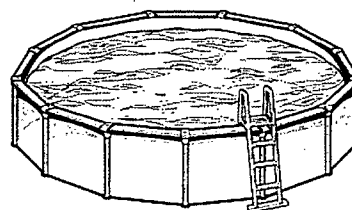
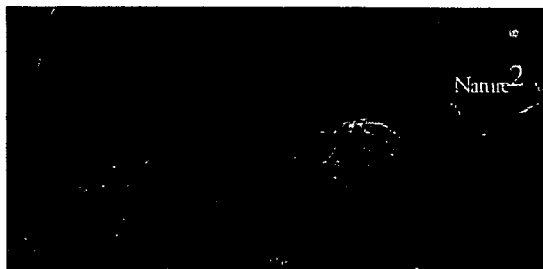
{The term "cartridge" or "this product" on this master label may be replaced with the product name on the marketing label}

Note: Bracketed [ ] information is optional text/picture/diagram. Text separated by a comma (,) denotes and/or options. {Bracket Text} is for administrative purposes. Punctuation, text size, text font, text color, capital letters, lower case letters, italics, bold and underline may vary on final printed labels. Spelling may vary when alternate spelling is acceptable; for example "algaecide" or "algicide"

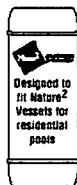
030607

{Optional language/pictures/diagrams may appear on any panel of the carton label in any combination}

13/28



**The Mineral Cartridge**  
The Low Chlorine Alternative



Note: Bracketed [ ] information is optional text/picture/diagram. Text separated by a comma (,) denotes and/or options. {Bracket Text} is for administrative purposes. Punctuation, text size, text font, text color, capital letters, lower case letters, italics, bold and underline may vary on final printed labels. Spelling may vary when alternate spelling is acceptable; for example "algaecide" or "algicide"

030607

{Optional language/pictures/diagrams may appear on any panel of the carton label in any combination}

14/  
28

# The Mineral Pool Sanitizer

The Low Chlorine Alternative\*



# Nature<sup>2</sup> Mineral Cartridge

The Low Chlorine Alternative\*



Note: Bracketed [ ] information is optional text/picture/diagram. Text separated by a comma (,) denotes and/or options. {Bracket Text} is for administrative purposes. Punctuation, text size, text font, text color, capital letters, lower case letters, italics, bold and underline may vary on final printed labels. Spelling may vary when alternate spelling is acceptable; for example "algaecide" or "algicide"

030607

15/  
28

Includes everything you need.

Nature<sup>2</sup> [VPG] Sanitizer, 36" flex-hose, two clamps, installation manual and owner's manual.  
The only tools you need for installation are a screwdriver and a handsaw.

Fits these pools.

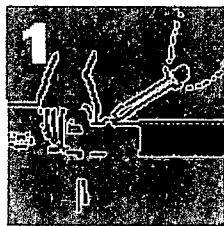
Round Pools from 2' diameter to 20' diameter

Oval Pools from 11' x 17' to 16' x 24'

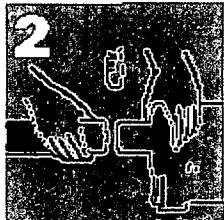
FOR INGROUND [IN-GROUND] AND ABOVEGROUND POOLS WITH CARTRIDGE FILTERS

Install it yourself in minutes.

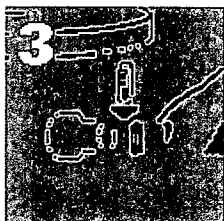
Lasts [one season] [four months].



Refer to Nature<sup>2</sup> VPG installation manual for further information. Disconnect hose from your filter. (This unit fits either 1 1/4" or 1 1/2" hoses) Use one clamp to attach hose to outlet side of Nature<sup>2</sup> VPG.



Attach the enclosed hose to the inlet side of Nature<sup>2</sup> VPG using the second clamp.



Attach the remaining hose end to the outlet of your filter. Then follow the start-up procedures included in the Nature<sup>2</sup> VPG Owner's Manual.

#### PRODUCT SPECIFICATIONS

Capacity	For 5,000 to 17,000 gallon pools
Flow Rates	20-50 GPM, MAX
Pressure Drop	2.5 PSI (5.7 FT-HD) @50GPM
Ports	1 1/2" or 1 1/4" smooth hose
Life	One season (up to [4, 6] months)
Run Times	6 hours a day minimum

{Insert product name} LASTS ONE SEASON (UP TO [SIX, FOUR] MONTHS)

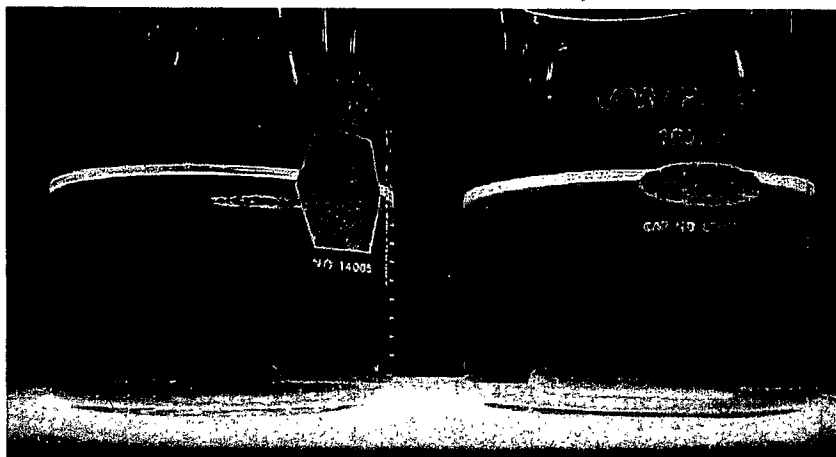
Discard {Insert product name} at the end of the season

Note: Bracketed [ ] information is optional text/picture/diagram. Text separated by a comma (,) denotes and/or options. {Bracket Text} is for administrative purposes. Punctuation, text size, text font, text color, capital letters, lower case letters, italics, bold and underline may vary on final printed labels. Spelling may vary when alternate spelling is acceptable; for example "algaecide" or "algicide"

Optional language/pictures/diagrams for CF model may appear on any panel of the carton label in any combination}

16/28

{Graphics on this page added by amendment on 03/01/07}



[Clarified] with Alumina

Without Alumina

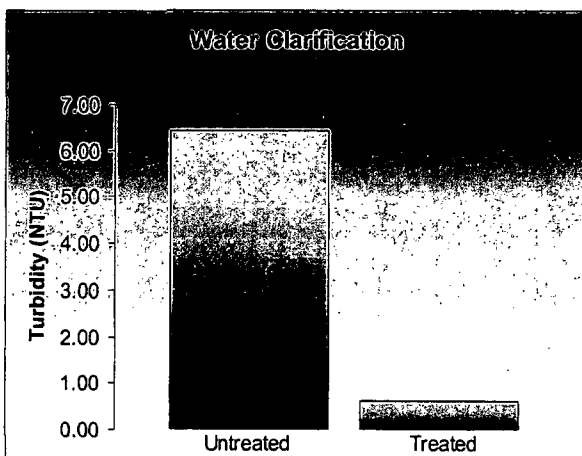
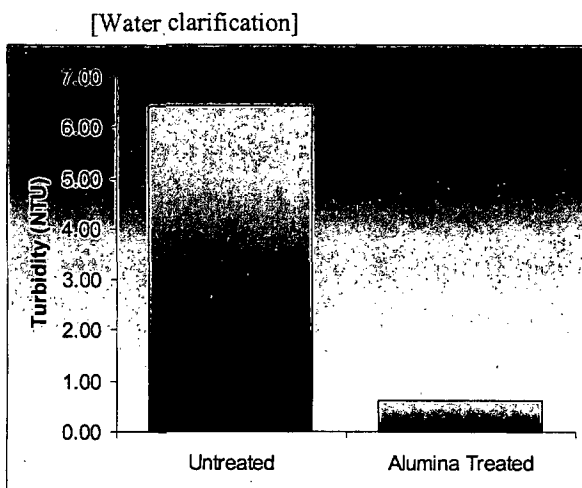
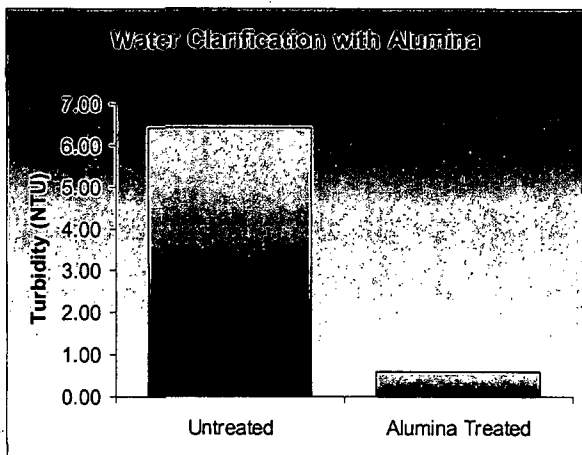


Note: Bracketed [ ] information is optional text/picture/diagram. Text separated by a comma (,) denotes and/or options. {Bracket Text} is for administrative purposes. Punctuation, text size, text font, text color, capital letters, lower case letters, italics, bold and underline may vary on final printed labels. Spelling may vary when alternate spelling is acceptable; for example "algacide" or "algicide"

030607

17/28

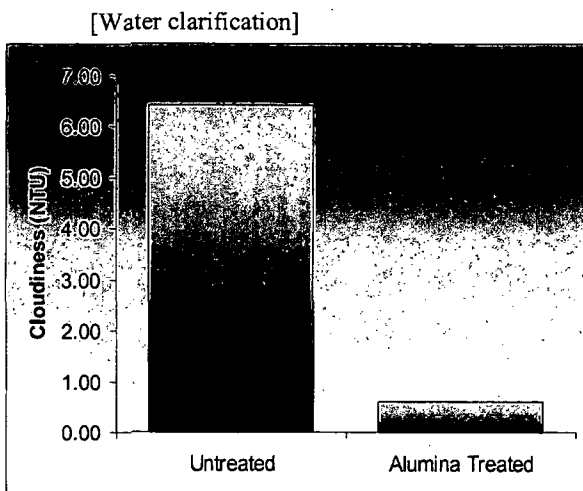
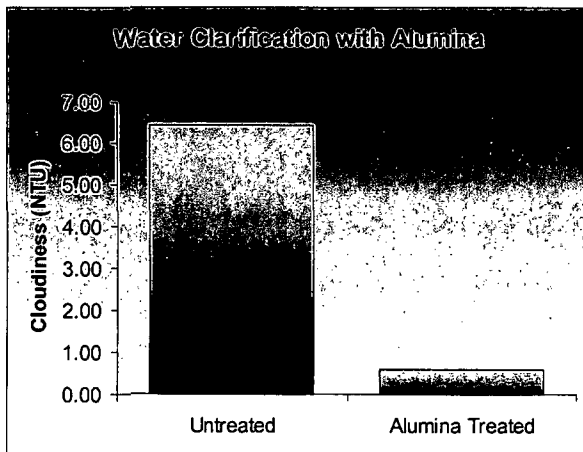
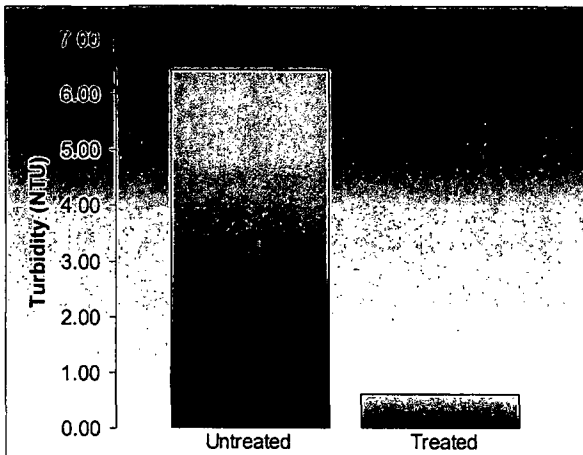
{Graphics on this page added by amendment on 03/01/07}



Note: Bracketed [ ] information is optional text/picture/diagram. Text separated by a comma (,) denotes and/or options. {Bracket Text} is for administrative purposes. Punctuation, text size, text font, text color, capital letters, lower case letters, italics, bold and underline may vary on final printed labels. Spelling may vary when alternate spelling is acceptable; for example "algicide" or "algaecide"

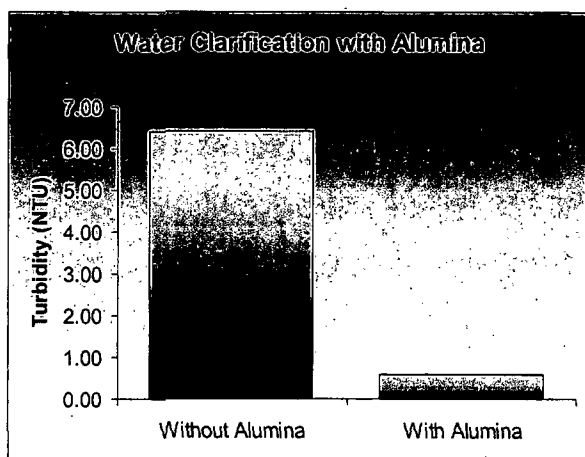
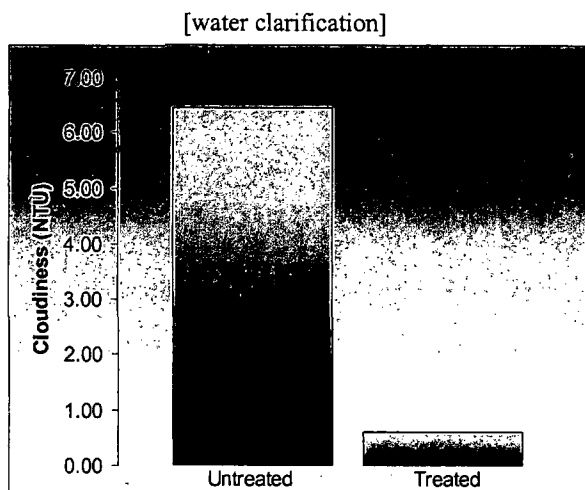
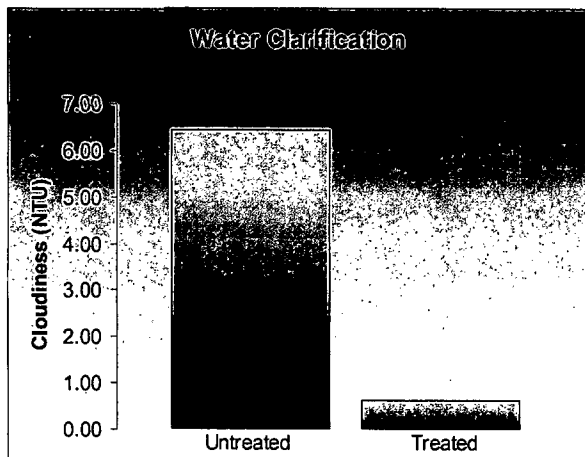
18/28

{Graphics on this page added by amendment on 03/01/07}  
[Water clarification]



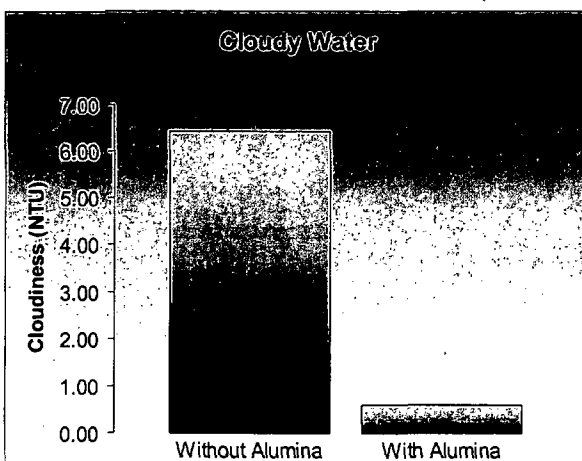
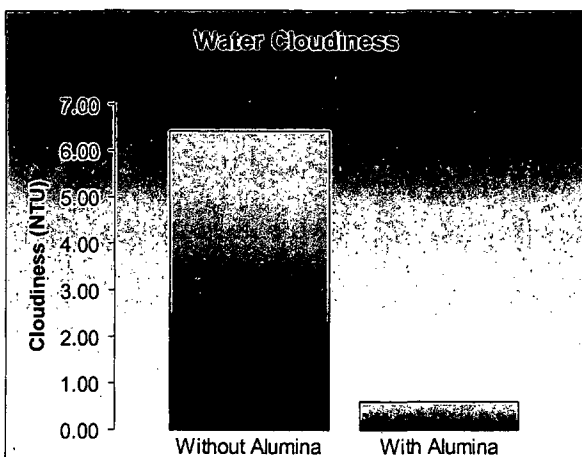
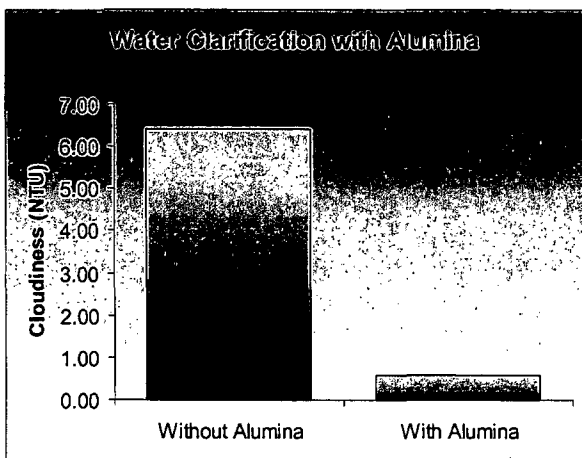
Note: Bracketed [ ] information is optional text/picture/diagram. Text separated by a comma (,) denotes and/or options. {Bracket Text} is for administrative purposes. Punctuation, text size, text font, text color, capital letters, lower case letters, italics, bold and underline may vary on final printed labels. Spelling may vary when alternate spelling is acceptable; for example "algicide" or "algaecide"

{Graphics on this page added by amendment on 03/01/07}



Note: Bracketed [ ] information is optional text/picture/diagram. Text separated by a comma (,) denotes and/or options. {Bracket Text} is for administrative purposes. Punctuation, text size, text font, text color, capital letters, lower case letters, italics, bold and underline may vary on final printed labels. Spelling may vary when alternate spelling is acceptable; for example "algaecide" or "algicide"

{Graphics on this page added by amendment on 03/01/07}



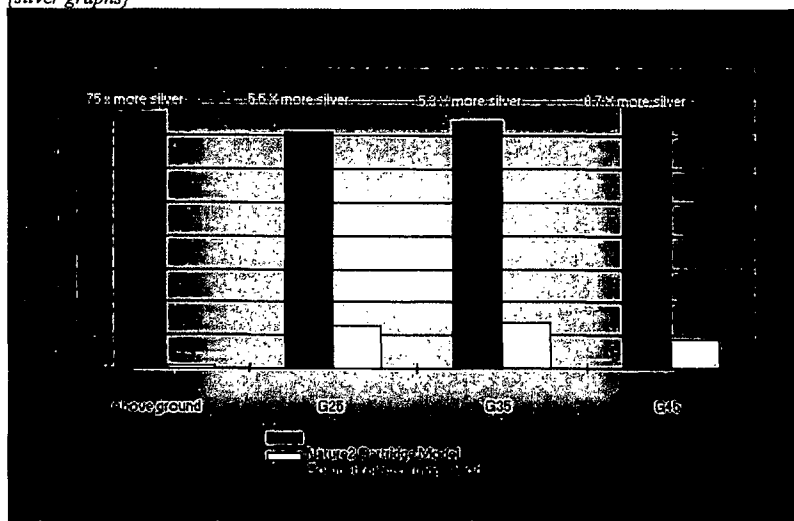
Note: Bracketed [ ] information is optional text/picture/diagram. Text separated by a comma (,) denotes and/or options. {Bracket Text} is for administrative purposes. Punctuation, text size, text font, text color, capital letters, lower case letters, italics, bold and underline may vary on final printed labels. Spelling may vary when alternate spelling is acceptable; for example "algaecide" or "algicide"

21/28

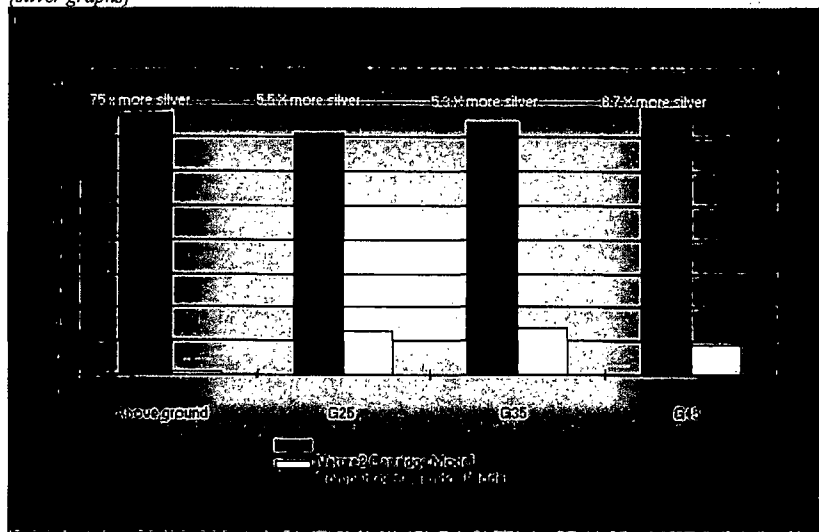
Optional language/pictures/diagrams for CF model may appear on any panel of the carton label in any combination

{Graphics on this page added by amendment on 03/01/07}

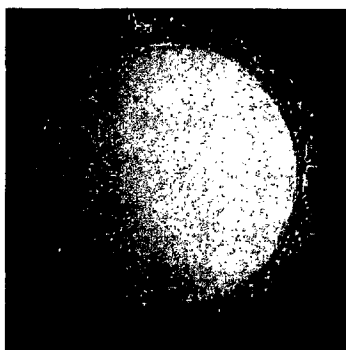
{silver graphs}



{silver graphs}



{copper image, may be used with various claims}



Note: Bracketed [ ] information is optional text/picture/diagram. Text separated by a comma (,) denotes and/or options. {Bracket Text} is for administrative purposes. Punctuation, text size, text font, text color, capital letters, lower case letters, italics, bold and underline may vary on final printed labels. Spelling may vary when alternate spelling is acceptable; for example "algaecide" or "algicide"

22/28



## Nature<sup>2</sup> AG [Cartridge] Owner's Manual

[Features Nature<sup>2</sup> Technology<sup>†</sup>]  
{insert product name} with Nature<sup>2</sup> Technology<sup>†</sup>

EPA Reg. No. 67712-5  
EPA Est. No. 67712-FL-001

### IMPORTANT

**Pool Owner, save this manual! Builders, leave this manual with the pool owner!**

**We ask you to take the time to get familiar with this manual.**

Thank you for purchasing {insert product name} [with] Nature<sup>2</sup> [technology<sup>†</sup>]. We believe the more you know, the more enjoyable your family's swimming experience will be - and the more you will reduce the time, effort and cost of maintaining your pool. Pool owners who switch from conventional chemical programs to the Nature<sup>2</sup> System\* spend less time maintaining their pools. Every pool has its own characteristics of water type, amount of sunlight, etc. The recipe [included in this manual] will help insure good water quality for your pool. Remember, your authorized [Zodiac, Nature<sup>2</sup>] dealer can provide professional advice and service.

### SAFETY INSTRUCTIONS – Important information. Please read prior to installation

Nature<sup>2</sup> [{insert product name}] [cartridge[s]] [have, has] been designed to sanitize aboveground swimming pools from [5,000-30,000] [5,000 – 17,000] gallons



**ATTENTION** Failure to heed the following can result in permanent injury or drowning

#### EQUIPMENT UNDER PRESSURE

Always turn pump off prior to installing or changing Nature<sup>2</sup> cartridge. Your pump/filter system is operated under pressure and the pressure must be released before you begin work. Please see your pump/filter owner's manual for further instructions.

#### PREVENT CHILD DROWNING

Do not let anyone, especially small children, sit, step, lean or climb on any equipment installed as part of your pool's operational system. Locate the components of your operational system at least 3 feet from the pool so children cannot use the equipment to access the pool and be injured or drown.

#### LOW CHLORINE RECIPE

You must strictly follow the low chlorine recipe included in this manual to maintain proper water chemistry and avoid health hazards. Failure to follow these instructions can lead to sickness from bacteria and other noxious organisms.



### CAUTION

#### Precautionary Statement

#### Hazards to Humans and Domestic Animals

#### CAUTION

In the unlikely event that a cartridge breaks, mineral media should not be ingested by humans or animals as it may cause gastric distress

#### First Aid

IF INGESTED: Call poison control center or doctor immediately for treatment advice.



The Nature<sup>2</sup> [Pool] Sanitizer is designed only for residential swimming pools.

\* The Nature<sup>2</sup> System consists of the patented Nature<sup>2</sup>® technology<sup>†</sup> used in conjunction with a chlorine delivery device or 0.5ppm of an EPA registered chlorine pool product.

<sup>†</sup> Nature<sup>2</sup>™ technology<sup>†</sup> consists of the minerals silver and copper.

Nature<sup>2</sup> is a registered trademark of Zodiac Pool Care, Inc.

Note: Bracketed [ ] information is optional text/picture/diagram. Text separated by a comma (,) denotes and/or options. {Bracket Text} is for administrative purposes. Punctuation, text size, text font, text color, capital letters, lower case letters, italics, bold and underline may vary on final printed labels. Spelling may vary when alternate spelling is acceptable; for example "algaecide" or "algicide"

030607

[Optional Table of Contents]

<b>Contents</b>	<b>Page</b>	<i>{the correct page numbers will be inserted for each manual}</i>
Safety Instructions	1	
Start Up	2	
[Assembly]	3	
Balance the Water	3	
Install the Cartridge	3	
Recipe	4	
Provide Filtration/Circulation	4	
Troubleshooting	5	
Nature <sup>2</sup> Cartridge Replacement Intervals	6	
Winterizing Your Pool	6	
Disposal	6	
Limited Warranty	7	

**Directions for Use:**

It is a violation of Federal law to use this product in a manner inconsistent with its labeling.

**Nature<sup>2</sup> Compatibility**

Nature<sup>2</sup> Systems\* can be used with all types of pool chemical treatments available except [bromine and bromide based chemicals,] biguanide products (Baquacil<sup>1</sup>, Softswim<sup>2</sup> or Revacil<sup>3</sup>) and copper based algaecides. (<sup>1</sup>A Trademark of Arch Chemicals, Inc., <sup>2</sup>A Trademark of Chemtura Corporation., <sup>3</sup>A Trademark of Mareva, Inc.)

**Important:** When converting [either] a biguanide [or bromine] treated pool to the Nature<sup>2</sup> System\*, the pool must be completely drained and refilled. Then follow the Nature<sup>2</sup> cartridge start-up procedure below.

**[Important:** Please make sure that the Nature<sup>2</sup> cartridge you have selected corresponds to your swimming pool size based on gallons of water. Using a Nature<sup>2</sup> cartridge for an undersized pool may cause staining of the pool.]

## Start Up

Before starting up a new [Nature<sup>2</sup>] cartridge, clean debris and algae out of the pool and [pool] equipment.

**Important:** *Do not install* the new cartridge until the pool water is clean and chemically balanced.

**Balance pool water** before installing [Nature<sup>2</sup>] [sanitizer, cartridge].

pH	7.4-7.8
Calcium Hardness	200-400 ppm
Total Alkalinity	80-150 ppm

Consult with your [Nature<sup>2</sup>, Zodiac] dealer for specific water balance instructions.

24/  
28

## Balance the Water

To find out if your pool water is balanced:

- take a water sample to your dealer to be tested regularly, or
- ask your dealer to recommend a pool test kit for water balance.

<b>Element: pH</b> <b>Range: 7.4-7.8</b>	<b>If it's too low:</b>	The surface of your pool can become etched Metal parts in the pump and plumbing will corrode.	<b>How to fix:</b> Add pH increaser
	<b>If it's too high:</b>	"Scale" forms on the surface of your pool. The water can become cloudy. Equipment can become damaged.	<b>How to fix:</b> Add pH decreaser
<b>Element: Calcium Hardness</b> <b>Range: 200-400 ppm</b>	<b>If it's too low:</b>	Water is less stable. In plaster pools, the calcium is taken out of the plaster, causing the surface to deteriorate.	<b>How to fix:</b> Add calcium hardness increaser.
	<b>If it's too high:</b>	Rough, discolored deposits ("scale") will form on the pool surface and inside pool equipment.	<b>How to fix:</b> Drain or dilute the pool water. <b>Consult your dealer.</b>
<b>Element: Total Alkalinity</b> <b>Range: 80-150 ppm</b>	<b>If it's too low:</b>	It provides no buffer so that you constantly get fluctuating pH readings, which can damage equipment and pool surfaces.	<b>How to fix:</b> Use an alkalinity increaser.
	<b>If it's too high:</b>	White deposits ("scale") form on the tile line. The plaster on pool surface becomes rough or discolored. The water becomes cloudy or milky white.	<b>How to fix:</b> Add acid to bring alkalinity down.

## Install the [Cartridge, Sanitizer]

**1 Install the cartridge [into your pool filter]** after water is balanced. [See, Refer to] [the, your] Nature<sup>2</sup> *{the model / product name may also be inserted here}* [vessel] operating manual for additional instructions [regarding your particular model's installation]. *{the product name may be used in place of or in addition to the term "cartridge"}*

**2 [Superoxidize, Superchlorinate] the pool water** with chlorine according to manufacturer's instructions to burn off contaminants and activate cartridge.

**Important:** Initial superoxidation with chlorine is required to burn off contaminants and activate cartridge.

**3 Run the circulating pump** either:

- 24 hours a day for 4 days, maintaining 1-2 ppm [free] chlorine throughout, or
- 6 hours a day for 14 days, maintaining 1-2 ppm [free] chlorine throughout.

**4 Let chlorine dissipate** to 0.5 ppm once start up period is completed.

Do not enter the pool if the free available chlorine residual is over 3 ppm.

Note: Bracketed [ ] information is optional text/picture/diagram. Text separated by a comma (,) denotes and/or options. *{Bracket Text}* is for administrative purposes. Punctuation, text size, text font, text color, capital letters, lower case letters, italics, bold and underline may vary on final printed labels. Spelling may vary when alternate spelling is acceptable; for example "algaeicide" or "algicide"

030607

25/28

## Recipe

There is one recipe for maintaining clean, clear, sanitized water with minimum time and effort. This recipe provides the easiest and most economical way to care for your Nature<sup>2</sup> pool.

**Low-Chlorine Recipe** Once the 4-day or 14-day start-up period is done, allow the free [available] chlorine residual to drop to 0.5 ppm (by reducing the amount of chlorine you add) then:

Ingredients:

Nature<sup>2</sup> cartridge {product name may be inserted}

Chlorine granules, tablets, liquid or generator

pH and total alkalinity adjusting chemicals

Calcium hardness increaser, if needed

Water test kit

**When:**

Every day

Once a week

Twice a week

As needed

**What to do:**

Run pump and filter at least 6 hours every day.

Balance pH and total alkalinity.

Check chlorine residual; add chlorine to maintain at least [a] 0.5ppm [free chlorine] [range using the chart below].

If water is hazy, superoxidize with chlorine according to manufacturer's instructions. Additional shocking is recommended following rainstorms or heavy bather load. Do not re-enter the pool if the free available chlorine residual is over 3 ppm.

Add the following amounts of chlorine per 10,000 gallons of water to increase free chlorine by 0.5 ppm

Type of Chlorine Containing Compound	% Active Ingredient	% Available Chlorine Content	Ounce Quantity Required	Gram Quantity Required
Sodium Hypochlorite Liquid	5.25	5.25	12.7	361
Sodium Hypochlorite Liquid	9.2	9.2	7.3	206
Sodium Hypochlorite Liquid	10	10	6.5	184
Sodium Hypochlorite Liquid	12	12	5.6	158
Calcium Hypochlorite	65	64	1.1	30
Dichloroisocyanurate	99	62	1.1	30
Lithium Hypochlorite	29	35	1.9	54
Trichloro-s-triazinetrione	99	90	0.7	21
Chlorine Gas, from any source including chlorine generators	100	100	0.7	19

## Provide Filtration/Circulation

**To manage:** You need to:

**Circulation** Follow the manufacturer's directions for keeping the circulating pump in good working order and operate it at least six hours a day. Consult your [Nature<sup>2</sup>, Zodiac] dealer for optimum run times.

**Filtration** Check the pool's filter periodically and clean it as recommended by the manufacturer.

26/28

## Troubleshooting Guide [Consult your [Nature<sup>2</sup>, Zodiac] Dealer for additional assistance or call 1-888-537-6657.]

	Problem	What to look for	Treatment
<b>Cloudy water</b> Frequently caused by improper start up. See section on Start Up [and Install the Cartridge.]	Poor filtration	Slow filter turnover rates	1 Backwash and clean filter. 2 Run filter for 24 hours. 3 Increase run time per day
	Algae growth	Hazy pool water, may have slightly green appearance.	[Superchlorinate, Superoxidize] water with chlorine according to manufacturer's instructions and brush pool walls.
	Unbalanced water	1 High hardness 2 High TDS (total dissolved solids) 3 High pH 4 High total alkalinity	Balance the pool water.
<b>Algae</b> Algae may be caused by insufficient levels of oxidizer and/or inadequate water circulation.	Green algae	Pea green color; attaches to pool walls sometimes colors the entire body of water.	1 Check pH and adjust if necessary. 2 [Superchlorinate, Superoxidize] with chlorine according to manufacturer's instructions and brush pool walls. 3 Repeat steps 1 and 2 until algae is gone.
	Black algae	Black spots on pool walls.	1 Brush affected areas.
	Mustard algae	Yellow or brown film on steps or walls.	2 [Superchlorinate, Superoxidize] water with chlorine according to manufacturer's instructions. 3 Add algaecide. 4 Vacuum pool. 5 Repeat steps 1 through 4 until algae is gone.
	<b>Note:</b> Regular algaecide treatments are recommended for outdoor pools that experience persistent algae problems. Do not use algae treatments containing either copper or sodium bromide.		
<b>Stains</b>	Blue/green	Copper or iron from pool equipment corrosion or water supply.	1 Adjust pH and total alkalinity to ideal ranges. 2 Vigorously brush stained areas. 3 Add sequestrant.
	Red/brown	Iron or manganese from equipment corrosion or water supply.	4 Run filter. 5 Twelve hours later; [superchlorinate, superoxidize] pool.
	Black	Manganese in water supply.	6 Test and balance water. 7 Test pool water for dissolved metals.
	Metal tarnishing	High native mineral content in water; unbalanced water.	Clean with soft cloth and mild detergent. Test water for minerals; use a sequestrant; maintain water balance.
<b>Scale</b>	Crusty deposits on pool surfaces.	High pH and high total alkalinity	Adjust pH and total alkalinity to ideal ranges.
		High TDS (total dissolved solids) or high hardness levels.	1 Replace a volume of pool water with water low in hardness and dissolved solids. 2 Use sequestrant to prevent scale buildup if high hardness levels are a continuing problem.
[If you need further assistance, please call 1-888-537-6657.]			

Note: Bracketed [ ] information is optional text/picture/diagram. Text separated by a comma (,) denotes and/or options. (Bracket Text) is for administrative purposes. Punctuation, text size, text font, text color, capital letters, lower case letters, italics, bold and underline may vary on final printed labels. Spelling may vary when alternate spelling is acceptable; for example "algaecide" or "algicide"

27/28

## Nature<sup>2</sup> [Cartridge, Sanitizer] Replacement Intervals

A cartridge lasts [six, 6, four, 4] months or one season, whichever is shorter. The cartridge should not be used longer than [six, 6, four, 4] continuous months.

Always turn pump off prior to installing or changing Nature<sup>2</sup> {product name may be inserted} [cartridge]. Your pump/filter is operated under pressure and the pressure must be released before you begin work. Please see your pump/filter owner's manual for further instructions.

## Winterizing Your Pool

Use these steps as a guide. Consult your dealer for specific information [in, on] your area.

### Warm Climate

- 1 **Reduce the number of hours the pump runs** since the cooler weather decreases the spread of algae and other pollutants.
- 2 **There is no need to [superoxidize, superchlorinate]** the pool during cool weather unless the water becomes cloudy (as may occur after a winter storm). See Cloudy Water in Troubleshooting section.

### Cold Climate

- 1 **Check total alkalinity and pH** of pool to make sure that they are in proper balance.
  - 2 **Vacuum the pool bottom** to remove any debris or other potential contaminants.
  - 3 **[Superoxidize, Superchlorinate]** the pool with chlorine according to manufacturer's instructions to clear the water.
  - 4 **Add a winter algaecide** following manufacturer's instructions.
- Important:** Do *not* use a winter algaecide with copper in it. [This will void the Nature<sup>2</sup> no-stain warranty.]
- 5 **Backwash the filter.**
  - 6 **Drain part of the pool water.** The amount to drain varies from one part of the country to another. Consult your dealer for advice.
  - 7 **Remove the [Nature<sup>2</sup>, sanitizer system] cartridge** and discard with household trash.
  - 8 **Winterize the pipes** with pool antifreeze following manufacturer's instructions.
  - 9 **Drain the water** out of all equipment (pump, filter, etc.)
  - 10 **Store** all baskets, hoses and cleaning equipment, indoors if possible.
  - 11 **Cover the pool** with a winter cover.

## Disposal

After [six, four] [months] [one season] of use, discard [Nature<sup>2</sup>, {product name may be inserted}] cartridge in household trash. Do not save the [cartridge, it] for re-use. The [cartridge, {product name may be inserted}] is manufactured with the mineral media sealed inside. In the unlikely event [a cartridge, {product name may be inserted}] breaks, remove it and vacuum out any media introduced into the pool.

28/28

{This warranty statement is optional}

## Limited Warranty

### Nature<sup>2</sup>® Limited Warranty

The limited warranties contained within this document are the only warranties given with your [Nature<sup>2</sup>, {insert model name}] [Sanitizer, Cartridge] and supercede any prior warranties. **All other warranties, expressed or implied, including the implied warranty of merchantability or the implied warranty of fitness for a particular purpose are hereby disclaimed.** Our sole obligation under this warranty, and the purchaser's sole remedy, is limited to repair or replacement of the [Nature<sup>2</sup>, {insert product name}] [Sanitizer, cartridge], [or one of its parts]. The Nature<sup>2</sup>® warranty applies to the original owner only.

#### [THE LIMITED WARRANTIES OF THE [NATURE<sup>2</sup>®, {insert product name}] [cartridge, SANITIZER[s]] [ARE]]:

[The] [Nature<sup>2</sup>, {insert product name}] [Sanitizer, cartridge[s]] [are, is] warranted to be free of defects in materials and to perform satisfactorily for a period of [six, four] months from the date of purchase. [Nature<sup>2</sup>, {insert product name}] [cartridge[s], Sanitizer] [is] warranted not to cause copper staining in your pool. This limited warranty requires that you exercise reasonable care of your pool and keep water in balance at all times and not use a copper-based algaecide. This [limited] warranty does not cover discoloration to chromium fittings. This warranty does not cover [cartridge[s], sanitizers] used with any biguanide products such as Baquacil® or Soft Swim® [or any products containing Bromine or Bromine-based chemicals]. If the [cartridge, sanitizer] is defective and does not perform satisfactorily for the entire [six, four] months, we will [make a prorata rebate based on your actual period of use. **You are responsible to pay the below-indicated percentage on the then applicable retail cost: <1 month-0%; 1-2 months-25%; 3-4 months-50%; 5-<6 months-75%.**] [replace your [{insert product name}] [cartridge, sanitizer.]

#### EXCLUSIONS FROM WARRANTY

[The] [Nature<sup>2</sup>, {insert product name}] [cartridge[s], Sanitizer] [are, is] designed for use on aboveground pools from [5,000 to 30,000] [5,000 to 17,000] gallons [only]. If it is used in any other application, the warranty is void, and the purchaser and/or pool owner releases the manufacturer from [any and] all claims related to the use of the Nature<sup>2</sup> [Sanitizer, Cartridge].

This warranty does not cover problems arising in whole or in part from purchaser's negligence, misuse or abuse, improper maintenance or storage, accident, improper installation, improper application, failure to follow all appropriate safety precautions, Acts of God, abnormal weather conditions, damage from plants or animals, and improper use of chemicals.

This warranty specifically excludes all incidental or consequential damages, except where state law requires them to be paid. This warranty gives you specific rights. You may have other rights that vary from state to state.

#### TO SUBMIT A CLAIM

Report claims to Zodiac Pool Care, Inc. by calling 1-888-537-6657. Only the original purchaser may submit a claim under this limited warranty. [All] Claims must be accompanied by an original purchase receipt.



Zodiac Pool Care, Inc.  
2028 NW 25th Avenue  
Pompano Beach, FL 33069  
1-800-YES-PURE  
www.zodiacpoolcare.com

Nature<sup>2</sup> is a registered trademark [owned by, of] Zodiac Pool Care, Inc.

Printed in the USA

© Copyright 2003 Zodiac Pool Care, Inc.

{optional manual part numbers} [W17680] [W17525]

Note: Bracketed [ ] information is optional text/picture/diagram. Text separated by a comma (,) denotes and/or options. {Bracket Text} is for administrative purposes. Punctuation, text size, text font, text color, capital letters, lower case letters, italics, bold and underline may vary on final printed labels. Spelling may vary when alternate spelling is acceptable; for example "algaecide" or "algicide"

030607