



OFFICE OF CHEMICAL SAFETY AND POLLUTION PREVENTION

WASHINGTON, D.C. 20460

February 03, 2025

Jennifer Brandon
jbrandon@delta-ac.com
W. NEUDORFF GMBH KG

Subject: Non-PRIA (Pesticide Registration Improvement Act) Labeling Amendment - Revise label
Product Name: PYROL-O
Admin Number: 67702-36
EPA Receipt Date: 02/24/2022
Action Case Number: 00480571

Dear Jennifer Brandon:

The amended labeling referred to above, submitted in connection with registration under the Federal Insecticide, Fungicide, and Rodenticide Act, as amended, is acceptable.

The alternate brand name: Garden Insecticide Concentrate has been added to the registration. Our records have been updated accordingly. This approval does not affect any terms or conditions that were previously imposed on this registration. You continue to be subject to existing terms or conditions on your registration and any deadlines connected with them.

A stamped copy of your labeling is enclosed for your records. This labeling supersedes all previously accepted labeling. You must submit one (1) copy of the final printed labeling before you release this product for shipment with the new labeling. In accordance with 40 CFR § 152.130(c), you may distribute or sell this product under the previously approved labeling for 18 months from the date of this letter. After 18 months, you may only distribute or sell this product if it bears this new revised labeling or subsequently approved labeling. "To distribute or sell" is defined under FIFRA section 2(gg) and its implementing regulation at 40 CFR § 152.3.

Should you wish to add/retain a reference to your company's website on your label, then please be aware that the website becomes labeling under FIFRA and is subject to review by EPA. If the website is false or misleading, the product will be considered to be misbranded and sale or distribution of the product is unlawful under FIFRA section 12(a)(1)(E). 40 CFR § 156.10(a)(5) lists examples of statements the EPA may consider false or misleading. In addition, regardless of whether a website is referenced on your product's label, claims made on the website may not substantially differ from those claims approved through the registration process. Therefore, should the EPA find or if it is brought to our attention that a website contains statements or claims substantially differing from statements or claims made in connection with obtaining a FIFRA section 3 registration, the website will be referred to the EPA's Office of Enforcement and Compliance Assurance.

Your release for shipment of this product constitutes acceptance of these terms. If these terms are not complied with, this registration will be subject to cancellation in accordance with FIFRA section 6.

If you have questions, please contact Elizabeth Andrews via email at andrews.elizabeth@epa.gov.

Sincerely,

Kable Bo Davis

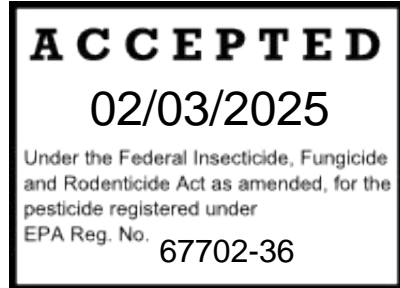
Kable Bo Davis, Senior Advisor
IVB1, RD
Office of Pesticide Programs

{Text in braces { } is for information only and will not appear on the label
Text in brackets [] is optional or a 'place holder' for graphics and may or may not appear on the label
Text in parentheses () will appear on the label}

Pyrol-O

[ABN: HydroWorxx Mite and Insect Killer Concentrate]
[ABN: HydroCraft Mite and Insect Killer Concentrate]
[ABN: HydroPower Mite and Insect Killer Concentrate]
[ABN : Garden Insecticide Concentrate]

Active Ingredients	By Wt.
Pyrethrins	0.50%
Canola Oil	89.00%
Other Ingredients	10.50%
Total	100.00%



{The registrant may use one of these statements, either}

[This product contains 6.837 lbs. of canola oil and 0.038 lbs. of pyrethrins per gallon.]

[This product contains 0.854 lbs. of canola oil and 0.005 lbs. of pyrethrins per pint.]

[This product contains 1.708 lbs. of canola oil and 0.01 lbs. of pyrethrins per quart.]

KEEP OUT OF REACH OF CHILDREN CAUTION

NET CONTENTS: 16 fl. oz., 24 fl. oz., 32 fl. oz., 1 gallon [128 fl. oz], 200 gallons and 211 gallons [800 liters]

EPA Reg. No. 67702-36

EPA Establishment #

FIRST AID [⚠]	
IF ON SKIN OR CLOTHING	-Take off contaminated clothing. -Rinse skin immediately with plenty of water for 15-20 minutes. -Call a poison control center or doctor for treatment advice.
Have the product container or label with you when calling a poison control center or doctor or going for treatment. For additional information on this pesticide product (including health concerns, medical emergencies, or pesticide concern), you may call 1-XXX-XXX-XXXX, 24 hours per day, 7 days per week. [insert the days and hours of operation if this number is less than 7 days a week, 24 hours a day and the following sentence: After [insert time after which number may not be called] call your poison control center at 1-800-222-1222.]	

PRECAUTIONARY STATEMENTS

Hazards to Humans and Domestic Animals: CAUTION. Avoid contact with skin or clothing. Wash hands thoroughly with soap and water after handling and before eating, drinking, chewing gum, using tobacco or using the toilet.

User Safety Recommendations

- Users should wash hands with plenty of soap and water before eating, drinking, chewing gum, using tobacco, or using the toilet.
- Users should remove clothing immediately if pesticide gets inside. Then wash thoroughly and put on clean clothing.

Environmental Hazards: This product is toxic to aquatic organisms including fish and invertebrates. To protect the environment, do not allow the pesticide to enter or run-off into storm drains, drainage ditches, gutters, or surface waters. Applying this product in calm weather when rain is not predicted for the next 24 hours will help to ensure that wind or rain does not blow or wash pesticide off the treatment area. Rinsing application equipment over the treated area will help avoid run-off to water bodies or drainage systems.

This product is highly toxic to bees exposed to direct treatment on blooming crops or weeds. Do not apply this product or allow it to drift to blooming crops or weeds while bees are actively visiting the area.

DIRECTIONS FOR USE

It is a violation of Federal law to use this product in a manner inconsistent with its labeling. Read entire label before use. Use only as directed. Shake well before each use.

USE RESTRICTIONS

- Do not make any applications during rain.
- Do not water the treated area to the point of run-off.
- Do not wet plants to point of runoff or drip.
- Do not allow adults, children or pets to enter the treated area until sprays have dried.
- Do not apply this product in a way that will contact adults, children, or pets, either directly or through drift.
- Remove pets, birds, and cover fish aquariums before spraying.
- Do not apply within 21 days of a sulfur application.
- Do not use PYROL-O spray when temperatures are above 90°F.
- Do not apply directly into sewers or drains, or to any area like a gutter where drainage to storm sewers, water bodies, or aquatic habitat can occur. Do not allow the product to enter any drain during application.
- Remove or cover exposed food and drinking water before application. Remove or cover dishes, food processing equipment, and food preparation surfaces, or wash them before use.
- Other than applications to building foundations, all applications to impervious surfaces, such as sidewalks, driveways, patios, porches and structural surfaces

(such as windows, doors, and eaves) are limited to spot and crack-and-crevice applications only.

- Do not apply more than 10 times per season.
- Do not reapply within 3 days except under extreme pest pressure.
- In case of extreme pest pressure do not reapply within 24 hours.
- Not for use in outdoors residential misting systems.

Phytotoxicity Note:

Oil removes the glaucous (blue) bloom from such evergreens as Colorado blue spruce and Koster spruce. Use a 1% solution on oil sensitive plants such as: Chamaecyparis, Cryptomeria, Japanese Holly, Red Cedar and Smoke Tree. Use care on blooms and buds. Test spray a portion of the plant and wait several days to determine if burn occurs before spraying larger areas. Some plants are sensitive to this product. If in doubt, test-spray a small portion of the plant and wait several days to determine if burn occurs before spraying larger areas.

APPLICATION DIRECTIONS

{The registrant may use one of these application directions, either}

[For a 1% solution mix, 2 teaspoons of concentrate with 1 quart [32 fl. oz.] water, or 1 fl. oz. concentrate with 3 quarts [96 fl. oz.] water. For a 2% solution, mix 4 teaspoons of concentrate with 1 quart [32 fl. oz.] water, or 2 fl. oz. concentrate with 3 quarts [96 fl. oz.] water. Shake well before each use and stir or shake diluted spray frequently during use.

Apply at a rate of 1% or 2% solution. For soft-bodied pests such as aphids and mites, a 1% solution is sufficient. Using hand-held trigger sprayers, hand sprayers or backpack sprayers, thoroughly spray insect pests with diluted product until all parts of plants are wet. Do not wet plants to point of runoff or drip. Repeat treatment in 1-2 weeks if needed. May be used on edible fruits and vegetables up to and including day of harvest.

Do not apply more than 4 fl. oz. of concentrate (400 fl. oz. of 1% solution or 200 fl. oz. of 2% solution) per 1000 square feet.

{OR}

Using the following [hose end sprayer], [applicator] instructions thoroughly spray insect pests with diluted product until plants are wet. Do not wet plants to point of runoff or drip. Repeat treatment in 1-2 weeks if needed. May be used on edible fruits and vegetables up to and including day of harvest.

{The registrant will use one of these two statements depending on the hose-end sprayer rate}

[Do not apply more than 400 fl. oz. of 1% solution per 1000 square feet.]

{or}

[Do not apply more than 200 fl. oz. of 2% solution per 1000 square feet.]

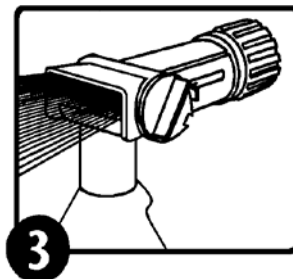
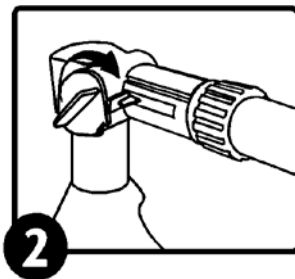
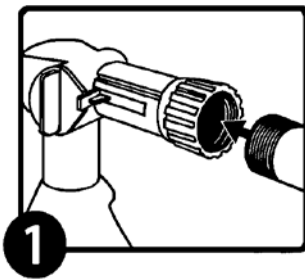
Hose-end Sprayer Directions:

{Optional hose-end sprayer directions that may be presented on the container or supplemental wording, either:}

1. Attach garden hose to spray nozzle. Turn on water supply.
2. Bend safety tab down and turn control to "water".
3. Point nozzle toward plants and turn water control knob to "On". Product will automatically mix with water. Spray upper and lower leaf surfaces thoroughly.

To Stop Spraying:

1. When you are finished spraying or if you have to stop spraying at any time, turn the blue knob back to the OFF position.
2. Turn off the water from the faucet.
3. Turn the blue knob to H₂O then OFF, to drain the water from the hose.
4. Unscrew spray nozzle from hose. Remove hose end from container.

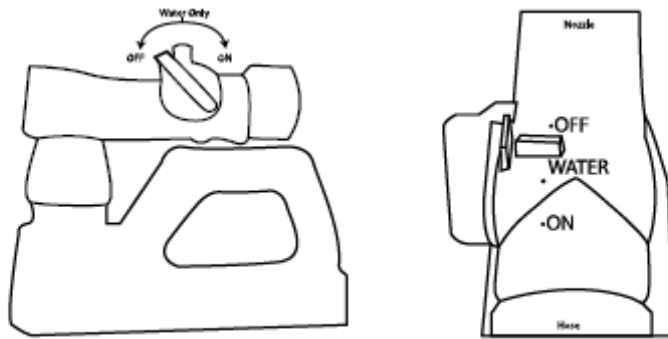


{OR}

How to Use the Ready to Spray	<ol style="list-style-type: none">1. Shake Well.2. Make sure control lever is in the OFF position. Attach to hose.3. Turn on water. [Extend hose to furthest place in [lawn or garden] [treatment area], so you can work backwards and limit exposure to spray.]4. [Spray]5. Aim towards direction of application.6. Turn control lever to ON to begin spraying.7. Spray evenly as directed for specified type of treatment area. [Lawn] [Garden] [or other listed use sites]8. When finished turn control lever to OFF.9. Turn faucet OFF. Discharge residual water pressure by turning control lever ON and OFF again.10. Disconnect Sprayer and Store / Discard as instructed.
--------------------------------------	--

{OR}

1. Attach to garden hose.
2. Turn on the water faucet.
3. Activate the sprayer by pushing the vertical tab towards the horizontal tab. The vertical tab on the sprayer cannot be removed because of the horizontal tab, which allows for resealing of partially used bottles when in the "OFF" position. The product channel is not opened until the control knob passes the vertical tab and is placed in the "ON" position.
4. When spraying is complete, or if you stop spraying at any time, move the horizontal tab back to the "OFF" position.
5. Rinse any residual product from the sprayer by passing through the "WATER" position on the sprayer.
6. Turn off the water at the faucet.
7. Remove the container from the garden hose, then rinse thoroughly and follow the directions in the Storage and Disposal section for storing or disposing of the container.



]

PESTS/SITES

PYROL-O will kill: Adelgids, Ants (including Foraging Ants, Sweet-Feeding Ants, Pavement Ants, Moisture Ants, Little Black Ants, Argentine Ants, Crazy Ants, Acrobat Ants, Bigheaded Ants, Cornfield Ants, Ghost Ants, Odorous House Ants, Thief Ants, Texas Leafcutting Ants, Field Ants, and other Common Ants) (except Fire Ants, Harvester Ants, Carpenter Ants, and Pharaoh Ants), Aphids (including Green Peach Aphids), Armyworms (including Beet Army Worms, Western Yellow Striped Armyworms), Bagworms, Beetles (Colorado potato beetle, flea beetle, Japanese beetle, asparagus beetle, Blister Beetles, 12-spotted Cucumber Beetles, Cucumber Beetle, Darkling Beetles (lesser mealworm), Saw-toothed Grain Beetles, Elm Leaf Beetles, Bean Beetles, Mexican Bean Beetles), Borers (including European Corn Borer, Branch and Twig Borers, Shot hole borers and Pacific flathead borers), Box Elder Bugs, Cabbageworms (including Cross-striped Cabbageworm and Imported Cabbageworm), Cankerworms, Caterpillars (Gypsy Moth Caterpillars, Tent Caterpillar, Eastern Tent Caterpillar, Forest Tent Caterpillar and Tomato Fruitworm Caterpillar), Corn Earworms, Crane Flies, Crickets, Diamondback Moth Larvae, Earwigs, Fireworms, Fungus Gnats, Fruit Flies (Including Cherry Fruit Fly), Glassy Winged Sharpshooter, Grape Leaf Skeletonizer, Grasshoppers, Green Fruit Worm, Harlequin Bugs, Hornworms (including Tomato Hornworm), Katydid, Lace Bugs, Leafhoppers (including Grape Leafhopper, and Potato Leafhoppers), Leafminers, Leafrollers (including Fruittree Leafrollers), Leaf-tiers, Loopers (including Cabbage Looper), Lygus, Maggots (including Apple Maggot, Cabbage Maggots, and Onion Maggot), Mealybugs (including Citrus Mealybugs, Grape Mealybugs and Vine Mealybugs), Non-biting Midges, Millipedes, Mites (including Clover

Mites, European Red Mite and Spider Mites), Moths (including Artichoke Plume Moth, Codling Moth, Diamondback Moth, European Pine Tip Moth, Gypsy Moths, Indian Meal Moth, Mediterranean Flour Moth), Mushroom Flies, Navel Orangeworm, , Plant Bugs(including Leaf footed Plant Bug, Tarnished Plant Bug), Psyllids (including Pear Psyllids), Sawfly Larvae (pear and rose slugs), Scale insects (including Soft Scale and Armoured Scale), Silverfish, Skippers, Sowbugs, Spittlebugs, Squash Bugs, Stink Bugs,Thrips (including Greenhouse Thrips), Vinegar Flies, Webworms, Weevils (including Boll Weevil, Carrot Weevil, Clover Weevil, Rice Weevil, Pepper Weevil), Whitefly and Phylloxera.

VEGETABLES AND HERBS: Use as directed above on vegetables and herbs such as asparagus, beans, broccoli, Brussels sprouts, cabbage, cauliflower, kale, oriental vegetables, herbs, lettuce, eggplant, peppers, tomatoes, potatoes, cucumbers, melons and squash.

FRUITS AND NUTS: Use as directed above on fruits and nuts such as apples, avocados, citrus (grapefruit, lemons ,oranges, tangerines, limes), peaches, nectarines, apricots, pears, almonds, pecans, walnuts, kiwi fruit, blackberries, loganberries, raspberries, strawberries, and grapes.

ORNAMENTAL TREES AND SHRUBS: Use as directed above on ornamental trees and shrubs such as azaleas, birch, camellias, dogwood, holly, rhododendrons, evergreens and shade trees. See PHYTOTOXICITY section for additional use restrictions.

FLOWERS: Use as directed above on flowers such as asters, carnations, chrysanthemums, geraniums, marigolds, petunias and roses.

GREENHOUSE USE: For use in home greenhouses on flowering and foliage plants; vegetables and fruits.

DORMANT USE: Kills egg stages of pests present in dormant season and pests on dormant shrubs (e.g., roses), evergreens, fruit trees and shade trees. Apply a 2% solution. Thoroughly wet the dormant plants or trees.

HOUSEPLANTS: For use on houseplants.

STORAGE AND DISPOSAL

Do not contaminate water, food or feed by storage or disposal.

PESTICIDE STORAGE: Keep this product in its tightly closed original container, when not in use. Store in a cool, dry, (preferably locked) area that is inaccessible to children and animals.

PESTICIDE DISPOSAL: Wastes resulting from the use of this product may be disposed of on site or at an approved waste disposal facility.

CONTAINER HANDLING & DISPOSAL: Nonrefillable container. Do not refill or reuse this container.

If empty: Place in trash or offer for recycling, if available.

If partly filled: Call your local solid waste agency for disposal instructions. Never place unused product down any indoor or outdoor drain.

BATCH CODE:

{The registrant may use one of these optional statements:}

[NOTICE TO BUYER

Seller warrants that this product conforms to the chemical description on this label and is reasonably fit for purposes stated in the Directions for Use, subject to the inherent risks described above, when used in accordance with Directions for Use under normal conditions. To the extent consistent with applicable law, this warranty does not extend to use of this product contrary to label directions, or under abnormal use conditions, or under conditions not reasonably foreseeable to Seller. To the extent consistent with applicable law, the Seller shall not be liable for any such use. To the extent consistent with applicable law, the Seller makes no other warranties, either expressed or implied."

{OR}

- Satisfaction guaranteed or your money back

{OR}

- Unconditionally guaranteed or your money back

{OR}

- Money back guarantee]

{Marketing claims and product information that may or may not be presented on the container or label:}

[

- Dormant and growing season insect spray to kill adelgids, aphids, armored scale, beetle larvae, cankerworms, caterpillars, fungus gnats, lace bugs, leafhoppers, leafminers, leafrollers, mealybugs, mites, plant bugs, psyllids, scale insects, spider mites, thrips, webworms and whiteflies.
- Dormant and growing season insect spray
- [Kills][Controls] [Use to kill] {Insert any or all of the following:} [Adelgids], [Ants [including Foraging Ants, Sweet-Feeding Ants, Pavement Ants, Moisture Ants, Little Black Ants, Argentine Ants, Crazy Ants, Acrobat Ants, Bigheaded Ants, Cornfield Ants, Ghost Ants, Odorous House Ants, Thief Ants, Texas Leafcutting Ants, Field Ants, and other Common Ants] (except Fire Ants, Harvester Ants, Carpenter Ants, and Pharaoh Ants)], [Aphids], [Green Peach Aphids], [Armyworms], [Beet Army Worms], [Western Yellow Striped Armyworms], [Bagworms], [Beetles], [Colorado Potato Beetle], [Flea beetle], [Japanese Beetle], [Asparagus Beetle], [Blister Beetles], [12-spotted Cucumber Beetles], [Cucumber Beetle], [Darkling Beetles], [Saw-toothed Grain Beetles], [Elm Leaf Beetles], [Bean Beetles], [Mexican Bean Beetles], [Borers], [European Corn Borer], [Branch and Twig Borers], [Shot hole borers], [Pacific flathead borers], [Box Elder Bugs], [Cabbageworms], [Cross-striped Cabbageworm], [Imported Cabbageworm], [Cankerworms], [Caterpillars], [Gypsy Moth Caterpillars], [Tent

- Caterpillar], [Eastern Tent Caterpillar], [Forest Tent Caterpillar], [Tomato Fruitworm Caterpillar], [Corn Earworms], [Crane Flies], [Crickets], [Diamondback Moth Larvae], [Earwigs], [Fireworms], [Fungus Gnats], [Fruit Flies], [Cherry Fruit Fly], [Glassy Winged Sharpshooter], [Grape Leaf Skeletonizer], [Grasshoppers], [Green Fruit Worm], [Harlequin Bugs], [Hornworms], [Tomato Hornworm], [Katydids], [Lace Bugs], [Leafhoppers], [Grape Leafhopper], [Potato Leafhoppers], [Leafminers], [Leafrollers], [Fruittree Leafrollers], [Leaftiers], [Loopers], [Cabbage Looper], [Lygus], [Maggots], [Apple Maggot], [Cabbage Maggots], [Onion Maggots], [Mealybugs], [Citrus Mealybugs], [Grape Mealybugs], [Vine Mealybugs], [Non-biting Midges], [Millipedes], [Mites], [Clover Mites], [European Red Mite], [Spider Mites], [Moths], [Artichoke Plume Moth], [Codling Moth], [Diamondback Moth], [European Pine Tip Moth], [Gypsy Moths], [Indian Meal Moth], [Mediterranean Flour Moth], [Mushroom Flies], [Navel Orangeworm], [Plant Bugs], [Leaf footed Plant Bug], [Tarnished Plant Bug], [Psyllids], [Pear Psyllids], [Sawfly Larvae [pear and rose slugs]], [Scale] [Soft Scale], [Armoured Scale], [Silverfish], [Skippers], [Sowbugs], [Spittlebugs], [Squash Bugs], [Stink Bugs], [Thrips], [Greenhouse Thrips], [Vinegar Flies], [Webworms], [Weevils], [Boll Weevil], [Carrot Weevil], [Clover Weevil], [Rice Weevil], [Pepper Weevil], [Whitefly], [Phylloxera] [and other listed insect pests].
- [Kills][Controls][Use to kill] [adelgids], [Ants (except Fire Ants, Harvester Ants, Carpenter Ants, and Pharaoh Ants)], [Aphids],[Armyworms], [Bagworms], [Beetles], [Borers], [Cabbage Looper], [Cabbageworms], [Cankerworms], [Caterpillars], [Crane Flies], [Crickets], [Diamondback Moth Larvae], [Earwigs], [Fireworms], [Fungus Gnats], [Fruit Flies], [Glassy Winged Sharpshooter], [Grape Leaf Skeletonizer], [Green Fruit Worm] [Harlequin Bug], [Hornworms], [Katydids], [Lace Bugs], [Leafhoppers], [Leafminers], [Leaftiers], [Loopers], [Leafrollers], [Lygus], [Maggots], [mealybugs], [Non-biting Midges], [Millipedes], [Mites], [Moths], [Mushroom Flies], [Navel Orangeworm], [Phylloxera], [Psyllid], [Scale], [Vinegar Flies], [Webworms], [Weevils], [Whiteflies] , [and other listed insect pests].
 - For indoor and outdoor use
 - [Controls][Kills] 100+ [listed] [insects] [on contact]
 - [Multi-Action:] [Controls] [Kills] all stages of listed insects, including eggs
 - Kills listed insects on contact
 - Indoor [and] Outdoor
 - Patent #5,700,473
 - Kills all accessible stages of listed insects, including eggs.
 - Contact insecticide, ovicide.
 - Fast acting-kills on contact
 - Contains pyrethrins and canola oil botanical insecticides.
 - Easy to use [liquid][ready-to-spray]
 - Ready-To-Spray
 - Insecticide/miticide
 - Kills insects on contact
 - Kills insects, including beetles, caterpillars and aphids.

- Kills aphids, beetles (Colorado potato beetle, flea beetle, Japanese beetle, asparagus beetle), caterpillars (gypsy moth caterpillars, tent caterpillar, diamondback moth larvae, leafrollers), ants (except Fire Ants, Harvester Ants, Carpenter Ants and Pharaoh Ants), mealybugs, mites, leafhoppers, scale insects, whitefly, adelgids, plant bugs, fungus gnats, thrips, sawfly larvae, psyllids, spittlebugs, and phylloxera.
- For use on: vegetables, fruits, ornamentals, shrubs, trees and houseplants
- Use on flowers, shrubs, fruits and vegetables
- Kills Japanese Beetles [on contact]
- Effective on listed soft and hard bodied insects
- Dual action
- Dual Killing Action
- Broad Spectrum [insecticide]
- Kills all stages of insect growth- egg to adult
- Kills [insect] eggs, larvae and adults
- Kills insects- eggs to adults
- PYROL-O is a contact killer for listed insect and mite pests.
- For best results, pests must be contacted directly with spray.
- Pyrol™ is a trademark of W. Neudorff GmbH KG
- Sold under a license of W. Neudorff GmbH KG, Germany
- Manufactured under a license of W. Neudorff GmbH KG, Germany



- May be used up to day of harvest
- [Use up to] day of harvest
- May be used on edible fruits and vegetables up to and including day of harvest
- Can be used right up until day of harvest.
- Use up to day of harvest
- Read Entire Container Label Before Using This Product
- Roses and flowers
- Gardens
- Fruits and vegetables
- Can be used in vegetable gardens
- For use in and around the home
- For use in and around homes and home greenhouses
- [For Use in] homes, gardens and greenhouses
- [See][refer to] [inside][side][back][panel][attached] [booklet][container label] for [additional] [complete] [precautionary statements], [directions for use], [application instructions], [first aid statements], [storage and disposal], [use precautions] {Note to reviewer - When the first aid statement will appear on the side or back panel, either the claim "See side panel for First Aid" or "See back panel for First Aid" will appear on the front panel}
- For questions or comments, call toll free 1-XXX-XXX-XXXX [-][📞][📱][☎️] [or visit us online at www.neudorff.com [💻]]
- For emergency medical information, you may call toll free 1-XXX-XXX-XXXX. [📞][📱][☎️] [or visit us online at www.neudorff.com [💻]]
- {For 16. fl. oz container} Makes over 12 gallons of spray
- {For 24 fl. oz. container} Makes over 18 gallons of spray

- {For 32 fl. oz container} Makes up to 25 gallons of spray
- {For 1 gallon container} Makes up to 100 gallons of spray



For Organic Gardening



For Organic Use

- Listed by the Organic Materials Review Institute (OMRI) for use in gardening of organic food and fiber
- Listed by the Organic Materials Review Institute (OMRI) for use in organic gardening

]

Registrant: W. Neudorff GmbH KG
An der Muhle 3,
31860 Emmerthal, Germany