



UNITED STATES ENVIRONMENTAL PROTECTION AGENCY
WASHINGTON, DC 20460

OFFICE OF CHEMICAL SAFETY
AND POLLUTION PREVENTION

August 8, 2018

Walter G. Talarek
W. Neudorff GmbH KG
5153 Allison Marshall Drive
Warrenton, VA 20187-8980

Subject: Notification per PRN 98-10 – Adding optional hose-end spray instructions and registrants contact information to sub-labels.

Product Name: FINALSAN CONCENTRATE GRASS AND WEED KILLER

EPA Registration Number: 67702-34

Application Date: March 9th, 2018

Decision Number: 543292

Dear Mr. Talarek:

The Agency is in receipt of your Application for Pesticide Notification under Pesticide Registration Notice (PRN) 98-10 for the above referenced product. The Registration Division (RD) has conducted a review of this request for its applicability under PRN 98-10 and finds that the action requested falls within the scope of PRN 98-10. The label submitted with the application has been stamped “Notification” and will be placed in our records.

Should you wish to add/retain a reference to the company’s website on your label, then please be aware that the website becomes labeling under the Federal Insecticide Fungicide and Rodenticide Act and is subject to review by the Agency. If the website is false or misleading, the product would be misbranded and unlawful to sell or distribute under FIFRA section 12(a)(1)(E). 40 CFR 156.10(a)(5) list examples of statements EPA may consider false or misleading. In addition, regardless of whether a website is referenced on your product’s label, claims made on the website may not substantially differ from those claims approved through the registration process. Therefore, should the Agency find or if it is brought to our attention that a website contains false or misleading statements or claims substantially differing from the EPA approved registration, the website will be referred to the EPA’s Office of Enforcement and Compliance.

If you have any questions, you may contact Grant Rowland at 703-347-0254 or via email at rowland.grant@epa.gov.

Sincerely,

A handwritten signature in black ink that reads "Kathryn V. Montague".

Kathryn Montague, Product Manager 23
Herbicide Branch
Registration Division (7505P)
Office of Pesticide Programs

MASTER LABEL

FINALSAN CONCENTRATE GRASS AND WEED KILLER

| | |
|--------------------------------------|-------------|
| Active Ingredient: | |
| Ammoniated soap of fatty acids | 22% |
| Other Ingredients: | 78% |
| Total: | 100% |

NOTIFICATION

67702-34

The applicant has certified that no changes, other than those reported to the Agency have been made to the labeling. The Agency acknowledges this notification by letter dated:

08/08/2018

SUBLABEL A: Home and Garden Use

SUBLABEL B: Commercial Agricultural Use

KEEP OUT OF REACH OF CHILDREN

WARNING

EPA REG. NO. 67702-34

EPA EST.

Registrant: W. Neudorff GmbH KG
An der Muhle 3, Postfach 1209
31860 Emmerthal, Germany

Home and Garden Use: NET CONTENTS: 8 fl. oz., 16 fl. oz., 27 fl. oz, 32 fl. oz., 54 fl. oz, 64 fl. oz., 1 gallon, 130 oz , 55 gallon, 200 gallon, 211 gallon (800 Liters) and 250 gallon

Commercial Agriculture Use: NET CONTENTS: 1 gallon, 2.5 gallon, 5 gallon, 30 gallon, 50 gallon, 55 gallon, 200 gallon, 211 gallon (800 Liters) and 250 gallon

SUBLABEL A: Home and Garden Use**FINALSAN CONCENTRATE
GRASS AND WEED KILLER****Active Ingredient:**

| | |
|--------------------------------------|-------------|
| Ammoniated soap of fatty acids | 22% |
| Other Ingredients: | 78% |
| Total: | 100% |

KEEP OUT OF REACH OF CHILDREN**WARNING**

EPA REG. NO. 67702-34

EPA EST.

NET CONTENTS: 8 fl. oz., 16 fl. oz., 27 fl. oz., 32 fl. oz., 54 fl. oz., 64 fl. oz., 1 gallon, 130 oz , 55 gallon, 200 gallon, 211 gallon (800 Liters) and 250 gallon

| FIRST AID | |
|---|---|
| IF IN EYES | <ul style="list-style-type: none"> • Hold eye open and rinse slowly and gently with water for 15-20 minutes. Remove contact lenses, if present, after the first 5 minutes, then continue rinsing eye. • Call a poison control center or doctor for treatment advice. |
| IF ON SKIN OR CLOTHING | <ul style="list-style-type: none"> • Take off contaminated clothing. • Rinse skin immediately with plenty of water for 15-20 minutes. • Call a poison control center or doctor for treatment advice. |
| IF INHALED | <ul style="list-style-type: none"> • Move person to fresh air. • If person is not breathing call 911 or an ambulance, then give artificial respiration, preferably mouth-to-mouth, if possible. • Call a poison control center or doctor for further treatment advice. |
| <p>Have the product container or label with you when calling a poison control center or doctor or going for treatment. [For emergency information concerning this product, call the National Pesticide Information Center (NPIC) at 1-800-858-7378 seven days a week., 6:30 am to 4:30 pm Pacific Time (NPIC Web site: www.npic.orst.edu) [alternately insert subregistrants toll free number and hours of operation]. During other times, call the poison control center 1-800-222-1222.]</p> | |

PRECAUTIONARY STATEMENTS

HAZARDS TO HUMANS AND DOMESTIC ANIMALS. WARNING: Causes skin irritation. Causes substantial but temporary eye injury. Harmful if inhaled. Do not get in eyes, on skin or on clothing. Avoid breathing spray mist. Wear long-sleeved shirt and long pants, socks, chemical resistant footwear and gloves. Wash thoroughly with soap and water after handling and before eating, drinking, chewing gum, or using tobacco. Remove contaminated clothing and wash before reuse. Wear protective eyewear (goggles, face shield or safety glasses).

ENVIRONMENTAL HAZARDS: This product is hazardous to aquatic invertebrates. Do not apply directly to water. To protect the environment, do not allow pesticide to enter or run off into storm drains, drainage ditches, gutters or surface waters. Applying this product in calm weather when

rain is not predicted for the next 24 hours will help to ensure that wind or rain does not blow or wash pesticide off the treatment area. Rinsing application equipment over the treated area will help avoid run off to water bodies or drainage systems.

DIRECTIONS FOR USE

It is a violation of Federal law to use this product in a manner inconsistent with its labeling.

USE SITES: Around ornamental flowers; on and around mature shrubs and trees; ornamental lawns and turf; ornamental woody shrubs, vines, and ornamental shade trees; spot treatment in lawns bordering garden areas; in seedbeds or site preparations prior to planting crop; cultivated areas prior to the emergence of susceptible plant parts or as a directed spray avoiding desirable plants; fields after the crop has been harvested; for farmstead maintenance on and around fences, driveways, and other right-of-ways surrounding crop areas; on structures holding flowers, trees, shrubs, vines, and vegetables; and grass or non-grass forage/fodder/hay.

[The registrant may use either of the following pests controlled descriptions, either:]

“**CONTROLS:** Annual bluegrass, chickweed, colonial bentgrass, corn spurry, creeping red fescue, dandelion, groundsel, hard fescue, lamb’s-quarters, large crabgrass, mouse-eared chickweed, mustards, perennial ryegrass, plantain, redroot pigweed, round leaved mallow, sheep sorrel, shepherd’s-purse, stinkweed, thistle, moss, algae and lichens.”

OR

“**PESTS:** Weeds controlled or suppressed by Finalsan Concentrate Grass and Weed Killer include the following:

- chickweed *Stellaria media*
- corn spurry *Spergula arvensis*
- dandelion *Taraxacum* spp.
- groundsel *Senecio* spp.
- lamb’s-quarters *Chenopodium album*
- mouse-eared chickweed *Cerastium vulgatum*
- mustards *Brassica* spp.
- plantain *Plantago* spp.
- redroot pigweed *Amaranthus retroflexus*
- round leaved mallow *Malva* spp.
- sheep sorrel *Rumex acetosella*
- shepherd’s-purse *Capsella bursa-pastoris*
- stinkweed *Thlaspi arvense*
- thistle *Cirsium* spp.
- annual bluegrass *Poa annua*
- large crabgrass *Digitaria sanguinalis*
- perennial ryegrass *Lolium perenne*
- creeping red fescue *Festuca rubra*
- hard fescue *Festuca ovina*
- colonial bentgrass *Agrostis tenuis*
- moss, algae, and lichens”

Product Information:

Finalsan Concentrate Grass and Weed Killer is a fast-acting, non-selective weed, grass, algae and moss killer. This product is not translocated. It will burn only those plant parts that are coated with spray solution. The best results are obtained with young, actively growing weeds, less than 5 inches high. Finalsan Concentrate Grass and Weed Killer can be used any time during the year

and works best during warm and dry conditions. Application during cold weather may delay appearance of plant damage. If rain falls within 3 hours of treatment, an additional spray may be required. Finalsan Concentrate Grass and Weed Killer controls many common annual weeds and suppresses the growth of some bi-annual and perennial weeds. It can be used in cultivated areas prior to planting grass, flowers and vegetables. Areas can be re-sown five days after treatment. Inadvertent overspray of Finalsan Concentrate Grass and Weed Killer does not stain concrete, pavement, stucco or wood.

Application Directions

[The registrant may use either of the following application directions sections, either:]

“Shake well before using. Mix one part Finalsan Concentrate Grass and Weed Killer with 5 parts water (26 oz. in 1 gallon of water). Alternatively, for small, easy-to-kill weeds, mix one part Finalsan Concentrate Grass and Weed Killer with 9 parts water (14 oz. in 1 gallon water). Apply the mixed solution at 2.5 – 7.5 gallons/1,000 ft² (3 – 9 fl. oz./yard²). For annual weeds, use at the lower rates. For perennial and more established weeds, use at higher rate. Any standard hand-held or backpack sprayer can be used. Spray weed thoroughly, using a coarse nozzle setting to reduce drift. Thorough coverage is extremely important. For spot treatment of individual weeds, apply the mixed solution to the center of plant to the point of runoff. Plant damage will be visible from a few hours to 2 days after spraying. Repeat treatment every 2 to 3 weeks to control new weeds growing from seed and re-growth from bi-annual and perennial weeds. Avoid spraying desirable plants. Thoroughly wash equipment after use.”

OR

“Shake well before using. Mix 26 oz. of Finalsan Concentrate Grass and Weed Killer in 1 gallon of water and spray weeds until runoff. Alternatively, for small, easy-to-kill weeds, mix 14 oz. Finalsan Concentrate Grass and Weed Killer in 1 gallon water. Apply the mixed solution at 2.5 – 7.5 gallons/1,000 ft² (3 – 9 fl. oz./yard²). Any standard hand-held or backpack sprayer can be used. Spray weeds thoroughly, using a coarse nozzle setting to reduce drift. Thorough coverage is extremely important. For spot treatment of individual weeds, apply the mixed solution to the center of plant to the point of runoff. Plant damage will be visible from a few hours to 2 days after spraying. Repeat treatment every 2 to 3 weeks to control new weeds growing from seed and re-growth from bi-annual and perennial weeds. Avoid spraying desirable plants. Thoroughly wash equipment after use.”

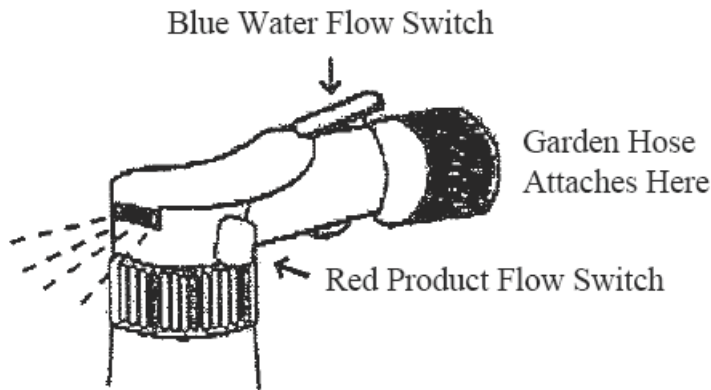
OR [For use with Gumbo sprayer:]

“Apply the contents of this container to XXX square feet.

Hose-End Sprayer Directions

How to Use This Sprayer: Shake Container Well Before Getting Started

1. Before you start, the blue flow switch should be in the ‘OFF’ position, and the red flow switch should be in the up, ‘CLOSED’ position.
2. Shake container well and attach it to your garden hose, while holding sprayer at waist level and pointing in a direction away from face and body.
3. Turn on water from the faucet.
4. When you are ready to spray, turn the blue flow switch to ‘ON’ position; turn red flow switch to the forward, ‘OPEN’ position, and begin spraying.
5. When you are finished spraying or if you have to stop spraying at any time, turn the blue flow switch back to the ‘OFF’ position and the red flow switch to the ‘CLOSED’ position.
6. Turn off the water at the faucet.
7. Remove the container from the garden hose; then rinse thoroughly and store according to storage instructions.

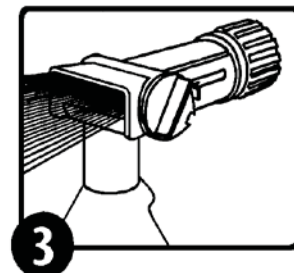
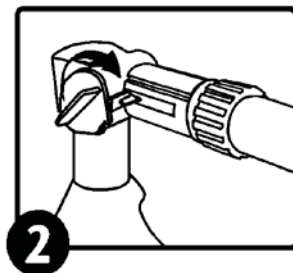
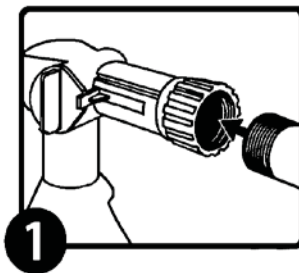


OR

1. Attach garden hose to spray nozzle. Turn on water supply.
2. Bend safety tab down and turn control to "water".
3. Point nozzle toward plants and turn water control knob to "On". Product will automatically mix with water. Spray upper and lower leaf surfaces thoroughly.

To Stop Spraying:

1. When you are finished spraying or if you have to stop spraying at any time, turn the blue knob back to the OFF position.
2. Turn off the water from the faucet.
3. Turn the blue knob to H2O then OFF, to drain the water from the hose.
4. Unscrew spray nozzle from hose. Remove hose end from container.
5. Reseal the container with the child-resistant closure. Rinse the hose-end applicator



OR

| | |
|---|---|
| <p>How to Use the Ready to Spray</p> | <ul style="list-style-type: none"> • Shake Well. • Make sure control lever is in the OFF position. Attach to hose. • Turn on water. [Extend hose to furthest place in [lawn or garden] [treatment area], so you can work backwards and limit exposure to spray.] • [Spray] • Aim towards direction of application. • Turn control lever to ON to begin spraying. • Spray evenly as directed for specified type of treatment area. [Lawn] [Garden] [or other] |
|---|---|

- When finished turn control lever to **OFF**.
- Turn faucet **OFF**. Discharge residual water pressure by turning control lever **ON** and **OFF** again.
- Disconnect Sprayer and Store / Discard as instructed.

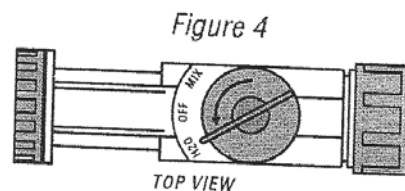
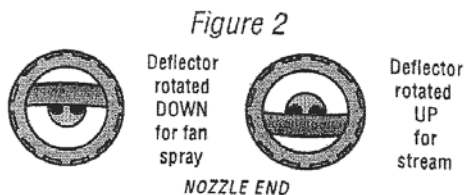
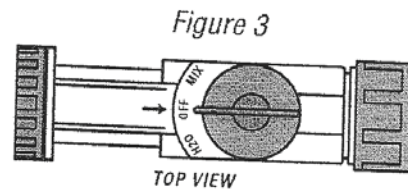
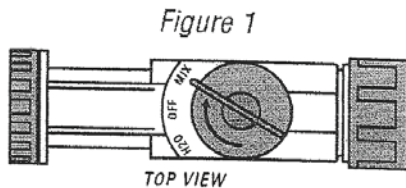
OR

To Use This Sprayer

1. Shake container well.
2. Connect spray nozzle to garden hose.
3. Turn on the water from the faucet. Extend hose to the farthest area to be treated and work back toward the faucet so you don't come in contact with the treated area.
4. When you are ready to spray, turn the knob on top so that it points to the MIX position on the spray head. (Fig. 1)
5. The spray deflector on the front of the hose-end applicator can be rotated to give a stream or fan spray. (Fig. 2)

To Stop Spraying

1. When you are finished spraying or if you have to stop spraying at any time, turn the knob back to the OFF position. (Fig 3)
2. Turn off the water from the faucet.
3. Turn the knob to H₂O then OFF, to drain the water from the hose. (Fig 4)



[End Subsection B]

] [Assembly Instructions for Use with Gumby Refill Cartridge:

1. Before each use check to make sure you are using the correct Gumby product for your (problem)(chore)(application).
2. Shake the (refill)(cartridge)(bottle) vigorously (hard)(well) before each use. For (lengthy)(long)(big) spraying jobs, (re-agitate)(shake) the (refill)(cartridge) (bottle) every (1/2 hour)(1 hour)(2 hours).
3. (Remove)(unscrew) (pop off) (twist off) the cap.
4. (Insert)(lock)(press)(snap)(refill)(cartridge)(bottle)(in place)(to device)(attach)(snap)(twist)(push)(slide)(refill)(cartridge)(bottle) into (sprayer)(multi sprayer)(feeder)(mechanism)(device).
5. To change (refill)(cartridge)(bottle) or when (refill)(cartridge)(bottle) is empty, hold (sprayer)(multi sprayer)(feeder) (mechanism)(device) with one hand and (unscrew) (pop-off)

(push button) to release (refill)(cartridge)(bottle) from (sprayer)(multi sprayer)(feeder) (mechanism)(device).

[Note to reviewer: The assembly instructions will vary depending on the specific design of the applicator. The following alternate assembly instructions may be added to or could replace portions of the basic assembly instruction above to accommodate potential configurations of the device.]

Attach (refill)(cartridge)(bottle) to (sprayer)(multi sprayer)(feeder) (mechanism)(device)
 Twist cap to close
 Align (arrows)(marks) on (refill)(cartridge)(bottle) with arrows on (sprayer)(multi sprayer)(feeder)(mechanism)(device) and ensure (refill)(cartridge)(bottle) is properly inserted.
 Replace (refill)(cartridge)(bottle) if empty
 Pull lever back, insert (refill)(cartridge)(bottle), release lever to retain (refill)(cartridge)(bottle)
 Slide (refill)(cartridge)(bottle) into (chamber)(slot)(orifice). Click in place, close cover.
 Use only Gumby product (refill)(cartridge)(bottle) with this (sprayer)(multi sprayer)(feeder)(mechanism)(device).
 Ensure you are using the correct (refill)(cartridge)(bottle) for the job.
 Double check that you have the correct (refill)(cartridge)(bottle).
 Press tabs to release (refill)(cartridge)(bottle).
 Before inserting new (refill)(cartridge)(bottle), wipe seals clean from dirt and debris. After insertion, spray for XXX (minutes)(seconds) to start the flow of product.
 Attach (refill)(cartridge)(bottle) to (sprayer)(multi sprayer)(feeder)(mechanism) (device). Turn (refill)(cartridge)(bottle) until it clicks into place.
 Align the corresponding (arrow)(mark) on the (sprayer)(multi sprayer)(feeder) (mechanism)(device) with the corresponding (arrow)(mark) on the (refill) (cartridge) (bottle).
 The cap (attachment)(feature)(component)(ring) on the (refill)(cartridge)(bottle) is not removable.
 Do not remove attached cap (attachment)(feature)(component) (ring) to (refill)(cartridge)(bottle).
 Do not removed insert in (refill) (cartridge)(bottle). Do not remove (black)(red)(other specified color) cap.
 Only use with specialized (sprayer)(multi sprayer)(feeder)(mechanism)(device).
 Quick disconnect. Pull back collar to release (refill)(cartridge)(bottle).
 (Refill)(cartridge)(bottle) reseals itself automatically, no spills, no leaks.
 Remove cap, align tabs, insert and turn (right)(left) until it stops.
 Insert (refill)(cartridge)(bottle) into (sprayer)(multi sprayer)(feeder)(mechanism)(device) until you hear a click. (Do not overtighten)
 Remove overcap, open door on (sprayer)(multi sprayer)(feeder) (mechanism)(device) and insert refill until you hear it click or button pops out.
 Place hand under the (sprayer)(multi sprayer)(feeder)(mechanism)(device) and press the release button on the side. The (refill)(cartridge)(bottle) will drop from the (sprayer)(multi sprayer)(feeder)(mechanism)(device).]

STORAGE AND DISPOSAL

PESTICIDE STORAGE: Store unused material, tightly closed, in original container only, away from open flame. Do not store at temperatures below 39°F.

PESTICIDE DISPOSAL:

If empty: Nonrefillable container. Do not reuse or refill this container. Place in trash or offer for recycling if available.

If partly filled: Call your local solid waste agency for disposal instructions. Never place unused product down any indoor or outdoor drain.

[The following claims and product information, may or may not be presented on the product's label and labeling:



- For Organic Gardening
- OMRI Listed



- For household use only
- Read the label first!
- The active ingredient in this product is exempted from the requirement of a tolerance for residues in or on all food commodities
- Kills: Weeds and Grasses, including dandelion, chickweed and other listed weeds
- Where to use: around ornamental flowers, mature shrubs and trees; pot treatment in lawns bordering garden areas; bark mulch; around planters, raised beds, containers and other structures holding flowers, trees, shrubs and vegetables; and in planting beds prior to planting grass, flowers or vegetables.
- Eliminates unwanted vegetation quickly
- Eliminates unwanted moss and algae quickly
- Overspray won't stain (bricks), (concrete), (pavement), (wood) or (asphalt)
- Kills within hours
- See results in hours
- Fast Acting
- Fast Acting Formula
- Kills (Weeds), (Grass), (Algae) and (Moss)
- Kills Moss Quickly (Fast)
- Fast Acting Weed, Grass, Moss and Algae Killer.
- Economical Concentrate
- www.neudorff.com



- This XXX fl. oz. bottle will cover up to XXX square feet.
- Treats (will treat) up to XXX sq. ft.
- Makes XXX gallons of Finished Spray.
- Kills (Controls) weeds, grass, algae and moss.
- Fast acting weed, grass, algae and moss killer can be used anytime of the year.
- Inadvertent contact with bordering concrete or bricks will not stain
- Before...After
- An herbicidal soap.
- Made with Finalsan™ herbicidal soap, a trademark of W. Neudorff GmbH KG, Germany.
- Contains Finalsan™ herbicidal soap, a trademark of W. Neudorff GmbH KG, Germany.
- Finalsan™ is a trademark of W. Neudorff GmbH KG, Germany.
- Sold under a license of W. Neudorff GmbH KG, Germany.]
- Manufactured under a license of W. Neudorff GmbH KG, Germany.
- Container treats more than X sq.ft. (weeds)(area)

Optional statements that may be presented on the container or supplemental wording when product is packaged with a hose end sprayer

- Hose-End Sprayer Directions
- Follow the directions for using the Hose-End sprayer.
- No mixing-no mess!
- Attach to garden hose and spray
- This product is ready to spray. Just attach this bottle to your garden hose according to directions. Water automatically mixes with the concentrate as you spray.
- Ready-to-Spray]

Optional Statements for Use on Gumby cartridge:

- No mixing, no measuring, no waste

[Optional warranty statements. Registrant has choice of using any or none.

NOTICE (TO BUYER)

To the extent consistent with applicable law, seller warrants that this product conforms to the chemical description on this label and is reasonably fit for purposes stated on this label only when used in accordance with directions under normal use conditions. This warranty does not extend to use of this product contrary to label directions, or under abnormal use conditions, or under conditions not reasonably foreseeable to seller. Buyer assumes all risk of any such use. To the extent consistent with applicable law, seller makes no other warranties, either expressed or implied.

OR

Seller makes no warranty, expressed or implied, concerning the use of this product other than indicated on the label. To the extent consistent with applicable law, buyer assumes all risk of use and/or handling of this material when such use and/or handling is contrary to label instructions.]

Registrant: W. Neudorff GmbH KG
An der Muhle 3, Postfach 1209
31860 Emmerthal, Germany

SUBLABEL B: Commercial Agriculture Use**FINALSAN CONCENTRATE
GRASS AND WEED KILLER**

Active Ingredient:

| | |
|--------------------------------------|-------------|
| Ammoniated soap of fatty acids | 22% |
| Other Ingredients: | 78% |
| Total: | 100% |

KEEP OUT OF REACH OF CHILDREN**WARNING**

EPA REG. NO. 67702-34

EPA EST.

NET CONTENTS: 1 gallon, 2.5 gallon, 5 gallon, 30 gallon, 50 gallon, 55 gallon, 200 gallon, 211 gallon (800 Liters) and 250 gallon

| FIRST AID | |
|---|---|
| IF IN EYES | <ul style="list-style-type: none"> • Hold eye open and rinse slowly and gently with water for 15-20 minutes. Remove contact lenses, if present, after the first 5 minutes, then continue rinsing eye. • Call a poison control center or doctor for treatment advice. |
| IF ON SKIN OR CLOTHING | <ul style="list-style-type: none"> • Take off contaminated clothing. • Rinse skin immediately with plenty of water for 15-20 minutes. • Call a poison control center or doctor for treatment advice. |
| IF INHALED | <ul style="list-style-type: none"> • Move person to fresh air. • If person is not breathing call 911 or an ambulance, then give artificial respiration, preferably mouth-to-mouth, if possible. • Call a poison control center or doctor for further treatment advice. |
| Have the product container or label with you when calling a poison control center or doctor or going for treatment. [For emergency information concerning this product, call the National Pesticide Information Center (NPIC) at 1-800-858-7378 seven days a week., 6:30 am to 4:30 pm Pacific Time (NPIC Web site: www.npic.orst.edu) [alternately insert subregistrants toll free number and hours of operation]. During other times, call the poison control center 1-800-222-1222.] | |

PRECAUTIONARY STATEMENTS

HAZARDS TO HUMANS AND DOMESTIC ANIMALS. WARNING: Causes skin irritation. Causes substantial but temporary eye injury. Harmful if inhaled. Do not get in eyes, on skin or on clothing. Avoid breathing spray mist. Wear long-sleeved shirt and long pants, socks, chemical resistant footwear and gloves. Wash thoroughly with soap and water after handling and before eating, drinking, chewing gum, or using tobacco. Remove contaminated clothing and wash before reuse. Wear protective eyewear (goggles, face shield or safety glasses).

PERSONAL PROTECTIVE EQUIPMENT (PPE) REQUIREMENTS: Applicators and other handlers must wear: coveralls worn over short-sleeved shirt and short pants, socks, chemical-

resistant footwear, waterproof gloves and protective eyewear. When cleaning equipment a chemical-resistant apron should also be worn.

Follow manufacturer's instructions for cleaning/maintaining PPE. If no such instructions for washables exist, use detergent and hot water. Keep and wash PPE separately from other laundry.

Discard clothing and other absorbent materials that have been drenched or heavily contaminated with this product's concentrate. Do not reuse them.

User Safety Recommendations

Remove clothing immediately if pesticide gets inside. Then wash thoroughly and put on clean clothing. Remove PPE immediately after handling this product. Wash the outside of gloves before removing. As soon as possible, wash thoroughly and change into clean clothing.

ENVIRONMENTAL HAZARDS

This product is hazardous to aquatic invertebrates. Do not apply directly to water, or to areas where surface water is present, or to intertidal areas below the mean high water mark. Do not contaminate water when cleaning equipment or disposing of equipment washwaters.

DIRECTIONS FOR USE

It is a violation of Federal Law to use this product in a manner inconsistent with its labeling.

Do not apply this product in a manner that will contact workers or other persons, either directly or through drift. Only protected workers may be in the area during application. For any requirements specific to your State or Tribe, consult the agency responsible for pesticide regulation.

Read and follow all applicable directions and precautions on this label before using.

Agricultural Use Requirements

Use this product in accordance with its labeling and with the Worker Protection Standard, 40 CFR part 170. This standard contains requirements for the protection of agricultural workers on farms, forests, nurseries, and greenhouses, and handlers of agricultural pesticides. It contains requirements for training, decontamination, notification, and emergency assistance. It also contains specific instructions and exceptions pertaining to the statements on this label about personal protective equipment (PPE), restricted-entry interval, and notification to workers. The requirements in this box only apply to uses of this product that are covered by the Worker Protection Standard (WPS).

ENTRY-RESTRICTIONS: Do not enter or allow worker entry into treated areas during the restricted-entry interval of 24 hours.

PPE required for early-entry to treated areas that is permitted under the Worker Protection Standard and that involves contact with anything that has been treated, such as plants, soil, or water, wear: coveralls worn over short-sleeved shirts and short pants, socks, chemical-resistant footwear, waterproof gloves and protective eyewear.

Non-Agricultural Use Requirements

The requirements in this box apply to uses of this product that are NOT within the scope of the Worker Protection Standard for agricultural pesticides (40 CFR Part 170). The WPS applies when this product is used to produce agricultural plants on farms, forests, nurseries, or greenhouses.

Keep unprotected persons out of treated areas until sprays have dried.

For early reentry to treated areas and that involves contact with anything that has been treated such as plants, soil, or water, wear: coveralls, shoes, socks, and waterproof gloves.

Application Directions

Shake well before using. Mix one part Finalsan Concentrate Grass and Weed Killer with 5 parts water (26 oz. in 1 gallon water). Alternatively, for small, easy-to-kill weeds, mix one part Finalsan Concentrate Grass and Weed Killer with 9 parts water (14 oz. in 1 gallon water). Apply the mixed solution at 75 – 200 gallons/acre (2.0 – 5.0 gallons/1,000 ft²). For annual weeds, use at the lower rates. For perennial and more established weeds, use at higher rate. Spray weed thoroughly, using a coarse nozzle setting to reduce drift. Thorough coverage is extremely important. For spot treatment of individual weeds, apply the mixed solution to the center of plant to the point of runoff. Plant damage will be visible from a few hours to 2 days after spraying. Repeat treatment every 2 to 3 weeks to control new weeds growing from seed and re-growth from bi-annual and perennial weeds. Avoid spraying desirable plants. Thoroughly wash equipment after use.

Product Information:

Finalsan Concentrate Grass and Weed Killer is a fast-acting, non-selective weed, grass, algae and moss killer. This product is not translocated. It will burn only those plant parts that are coated with spray solution. The best results are obtained with young, actively growing weeds, less than 5 inches high. Finalsan Concentrate Grass and Weed Killer can be used any time during the year and works best during warm and dry conditions. Application during cold weather may delay appearance of plant damage. If rain falls within 3 hours of treatment, an additional spray may be required. Finalsan Concentrate Grass and Weed Killer controls many common annual weeds and suppresses the growth of some bi-annual and perennial weeds. It can be used in cultivated areas prior to planting grass, flowers and vegetables. Areas can be re-sown five days after treatment. Inadvertant overspray of Finalsan Concentrate Grass and Weed Killer does not stain concrete, pavement, stucco or wood.

USE SITES:

Around ornamental flowers; on and around mature shrubs and trees; ornamental lawns and turf; ornamental woody shrubs, vines, and ornamental shade trees; spot treatment in lawns bordering garden areas; bark mulch; in seedbeds or site preparations prior to planting crop; cultivated areas; prior to the emergence of susceptible plant parts or as a directed spray avoiding desirable plants; fields after the crop has been harvested; for farmstead maintenance on and around fences, driveways, and other right-of-ways surrounding crop areas; on raised beds and other structures holding flowers, trees, shrubs, vines, and vegetables; and grass or non-grass forage/fodder/hay.

[The registrant may use either of the following Pests Controlled descriptions, either:]

“CONTROLS: Annual bluegrass, chickweed, colonial bentgrass, corn spurry, creeping red fescue, dandelion, groundsel, hard fescue, lamb’s-quarters, large crabgrass, mouse-eared chickweed, mustards, perennial ryegrass, plantain, redroot pigweed, round leaved mallow, sheep sorrel, shepherd’s-purse, stinkweed, thistle, moss, algae and lichens]”

OR

“PESTS: Weeds controlled or suppressed by FINALSAN CONCENTRATE GRASS AND WEED KILLER include the following:

- chickweed *Stellaria media*

- corn spurry *Spergula arvensis*
- dandelion *Taraxacum* spp.
- groundsel *Senecio* spp.
- lamb's-quarters *Chenopodium album*
- mouse-eared chickweed *Cerastium vulgatum*
- mustards *Brassica* spp.
- plantain *Plantago* spp.
- redroot pigweed *Amaranthus retroflexus*
- round leaved mallow *Malva* spp.
- sheep sorrel *Rumex acetosella*
- shepherd's-purse *Capsella bursa-pastoris*
- stinkweed *Thlaspi arvense*
- thistle *Cirsium* spp.
- annual bluegrass *Poa annua*
- large crabgrass *Digitaria sanguinalis*
- perennial ryegrass *Lolium perenne*
- creeping red fescue *Festuca rubra*
- hard fescue *Festuca ovina*
- colonial bentgrass *Agrostis tenuis*
- moss, algae, and lichens”

USE METHODS:

Vegetation Burndown: General control of weeds, grass, algae and moss for site preparation and non-crop areas. Spot treatments may be used in crop and pasture situations. Applications may be made in and around desirable plants when contact of foliage and green bark is avoided.

Directed and Shielded Sprays: Applications may be made around desirable plants when contact of foliage and green bark is avoided.

Prior to Emergence of Plants from Seed, Perennial Rootstocks, and Bulbs: Ensure applications are made before new growth or crop emerges from soil or damage will occur. Areas can be re-sown five days after treatment.

Sucker Control, Pruning and Trimming: To burn back and control epicormic shoots, sucker growth, and other unwanted growth on woody trees, foliage growth on vines, excessive cane growth in brambles, or other listed use sites. Apply only to unwanted vegetative parts. Apply before suckers become woody.

Harvest Aid and Desiccation: To remove leaves of plants prior to harvest and/or burndown of weeds to facilitate harvest. Harvest aid and desiccation uses include applications to root and tuber vegetables, bulb vegetables and cotton only. Applications must be made no later than 24 hours prior to harvest.

Post-Harvest Spray: To control weeds, grass, moss and algae growing in fields after the commodity has been harvested.

STORAGE AND DISPOSAL

Do not contaminate water, food or feed by storage or disposal

PESTICIDE STORAGE: Store in a secure place, away from open fire or flame. Keep container closed and reseal after use. Product may be damaged by freezing. Do not store product below 39oF. If spilled, use absorbent materials and dispose of in an approved manner.

PESTICIDE DISPOSAL: Wastes resulting from the use of this product may be disposed of on site or at an approved waste disposal facility.

CONTAINER HANDLING: (For containers equal to or less than 5 gallons use these directions on final, printed label): Nonrefillable container. Do not reuse or refill this container. Triple rinse container promptly after emptying. Triple rinse as follows: Empty the remaining contents into application equipment or a mix tank and drain for 10 seconds after the flow begins to drip. Fill the container ¼ full with water and recap. Shake for 10 seconds. Pour rinsate into application equipment or a mix tank or store rinsate for later use or disposal. Drain for 10 seconds after the flow begins to drip. Repeat this procedure two more times. Offer for recycling, if available.

(For containers greater than 5 gallons use these directions on final, printed label): Nonrefillable container. Do not reuse or refill this container. Triple rinse container promptly after emptying. Triple rinse as follows: Empty the remaining contents into application equipment or a mix tank. Fill the container ¼ full with water. Replace and tighten closures. Tip container on its side and roll it back and forth, ensuring at least one complete revolution, for 30 seconds. Stand the container on its end and tip it back and forth several times. Turn the container over onto its other end and tip it back and forth several times. Empty the rinsate into application equipment or a mix tank or store rinsate for later use or disposal. Repeat this procedure two more times. Offer for recycling, if available.

[The following claims and product information, may or may not be presented on the product's label and labeling:



-
- For Organic Gardening
- For Organic Production



-
- Listed by the Organic Materials Review Institute (OMRI) for use in production of organic food and fiber.
- Listed by the Organic Materials Review Institute (OMRI) for use in organic production.
- OMRI Listed
- The active ingredient in this product is exempted from the requirement of a tolerance for residues in or on all food commodities
- Kills: Weeds and Grasses, including dandelion, chickweed and other listed weeds
- Where to use: around ornamental flowers, mature shrubs and trees; spot treatment in lawns bordering garden areas; bark mulch; around planters, raised beds, containers and other structures holding flowers, trees, shrubs and vegetables; and in planting beds prior to planting grass, flowers or vegetables.
- Eliminates unwanted vegetation quickly
- Eliminates unwanted moss and algae quickly
- Overspray won't stain (bricks), (concrete), (pavement), (wood) or (asphalt)
- Kills within hours
- See results in hours
- Fast Acting
- Fast Acting Formula
- Kills (Weeds), (Grass), (Algae) and (Moss)
- Kills Moss Quickly (Fast)
- Fast Acting Weed, Grass, Moss and Algae Killer.
- Economical Concentrate

- www.neudorff.com



- This XXX fl. oz. bottle will cover up to XXX square feet.
- Treats (will treat) up to XXX sq. ft.
- Makes XXX gallons of Finished Spray.
- Kills (Controls) weeds, grass, algae and moss.
- Fast acting weed, grass, algae and moss killer can be used anytime of the year.
- Inadvertent contact with bordering concrete or bricks will not stain
- Before...After
- An herbicidal soap.
- Made with Finalsan™ herbicidal soap, a trademark of W. Neudorff GmbH KG, Germany.
- Contains Finalsan™ herbicidal soap, a trademark of W. Neudorff GmbH KG, Germany.
- Finalsan™ is a trademark of W. Neudorff GmbH KG, Germany.
- Sold under a license of W. Neudorff GmbH KG, Germany.]
- Manufactured under a license of W. Neudorff GmbH KG, Germany.
- Container treats more than X sq.ft. (weeds)(area)

[Optional warranty statements. Registrant has choice of using any or none.

NOTICE (TO BUYER)

To the extent consistent with applicable law, seller warrants that this product conforms to the chemical description on this label and is reasonably fit for purposes stated on this label only when used in accordance with directions under normal use conditions. This warranty does not extend to use of this product contrary to label directions, or under abnormal use conditions, or under conditions not reasonably foreseeable to seller. Buyer assumes all risk of any such use. To the extent consistent with applicable law, seller makes no other warranties, either expressed or implied.

OR

Seller makes no warranty, expressed or implied, concerning the use of this product other than indicated on the label. To the extent consistent with applicable law, buyer assumes all risk of use and/or handling of this material when such use and/or handling is contrary to label instructions.]

Registrant: W. Neudorff GmbH KG
An der Muhle 3, Postfach 1209
31860 Emmerthal, Germany