



OFFICE OF CHEMICAL SAFETY AND POLLUTION PREVENTION

WASHINGTON, D.C. 20460

January 09, 2026

SENT BY EMAIL

Jennifer Brandon
jbrandon@delta-ac.com
W. NEUDORFF GMBH KG

Subject: Labeling Notification per Pesticide Registration Notice (PRN) 98-10 - Add an optional QR code on label.
Product Name: SULFUR/PYRETHRINS FUNGICIDE/INSECTICIDE RTU
Admin Number: 67702-15
EPA Receipt Date: 10/24/2025
Action Case Number: 00672070

Dear Jennifer Brandon:

The U.S. Environmental Protection Agency is in receipt of your application for notification under Pesticide Registration Notice 98-10 for the above referenced product. The EPA has conducted a review of this request for its applicability under PRN 98-10 and finds that the action requested falls within the scope of PRN 98-10.

The labeling submitted with this application has been stamped "Notification" and will be placed in our records.

Should you wish to add/retain a reference to your company's website on your label, then please be aware that the website becomes labeling under the Federal Insecticide, Fungicide, and Rodenticide Act and is subject to review by the EPA. If the website is false or misleading, the product will be considered to be misbranded and sale or distribution of the product is unlawful under FIFRA section 12(a)(1)(E). 40 CFR § 156.10(a)(5) lists examples of statements the EPA may consider false or misleading. In addition, regardless of whether a website is referenced on your product's label, claims made on the website may not substantially differ from those claims approved through the registration process. Therefore, should the EPA find or if it is brought to our attention that a website contains statements or claims substantially differing from statements or claims made in connection with obtaining a FIFRA section 3 registration, the website will be referred to the EPA's Office of Enforcement and Compliance Assurance.

If you have questions, please contact Senedu Alemu via email at alemu.senedu@epa.gov.

Sincerely,

Kable Bo Davis

Kable Bo Davis, Senior Advisor
FB, RD
Office of Pesticide Programs

Text in braces is for informational purposes only and will not appear on label
Text in brackets is optional language and may or may not appear on the label
Text in parentheses is language that will appear on the label

SULFUR/PYRETHRINS FUNGICIDE/INSECTICIDE RTU

ACTIVE INGREDIENTS:

Sulfur 0.20%
Pyrethrins..... 0.01%
OTHER INGREDIENTS: 99.79%
TOTAL: 100.00%

NOTIFICATION

67702-15

The applicant has certified that no changes, other than those reported to the Agency have been made to the labeling. The Agency acknowledges this notification by letter dated:

01/09/2026

**KEEP OUT OF REACH OF CHILDREN
CAUTION**

EPA REG. NO. 67702-15

EPA EST. NO.

FIRST AID	
IF ON SKIN OR CLOTHING	-Take off contaminated clothing. -Rinse skin immediately with plenty of water for 15-20 minutes. -Call a poison control center or doctor for treatment advice.
IF IN EYES	-Hold eye open and rinse slowly and gently with water for 15-20 minutes. -Remove contact lenses, if present, after the first 5 minutes, then continue rinsing eye. -Call a poison control center or doctor for treatment advice.
Have the product container or label with you when calling a poison control center or doctor or going for treatment. For additional information on this pesticide product, you may call the National Pesticide Information Center at 1-800-858-7378 for emergency medical treatment information {alternately insert supplemental distributor's toll free number and hours of operation}.	

NET CONTENTS: 8 fl. oz., 16 fl. oz., 24 fl. oz., 32 fl. oz., 40 fl. oz. 64 fl. oz. 1 gallon

PRECAUTIONARY STATEMENTS

HAZARDS TO HUMANS AND DOMESTIC ANIMALS

CAUTION. Causes moderate eye irritation. Avoid contact with eyes. Avoid contact with skin or clothing. Wash thoroughly with soap and water after handling and before eating, drinking, chewing gum, using tobacco or using the toilet.

User Safety Recommendations

- Users should wash hands with plenty of soap and water before eating, drinking, chewing gum, using tobacco, or using the toilet.
- Users should remove clothing immediately if pesticide gets inside. Then wash thoroughly and put on clean clothing.

ENVIRONMENTAL HAZARDS

This product is toxic to aquatic organisms including fish and invertebrates. Do not contaminate water when disposing of equipment, washwater, or rinsate. Do not apply directly to or near water. Drift and run-off may be hazardous to fish in water adjacent to treated areas. See Directions for Use for additional precautions and requirements.

PHYSICAL OR CHEMICAL HAZARDS

Combustible. Do not use or store near heat or open flame.

Text in braces is for informational purposes only and will not appear on label
Text in brackets is optional language and may or may not appear on the label
Text in parentheses is language that will appear on the label

DIRECTIONS FOR USE

It is a violation of Federal Law to use this product in a manner inconsistent with its labeling.

[Before you use:]

Use Precautions:

- Some varieties of grapes and cucurbits are sensitive to sulfur and some plant damage may occur.
- Use care or do not spray on sulfur sensitive plants. If not sure, test spray a few leaves 2 days before spraying the entire plant.

Use Restrictions:

- Do not apply to strawberry fruit that will be used for canning.
- Do not wet plants to point of runoff or drip.
- Do not water the treated areas to point of runoff or dip.
- Do not make applications during rain.
- Not for use in outdoor residential misting systems
- Do not apply more than 10 times per season.
- Do not reapply within 3 days except under extreme pest pressure.
- In case of extreme pest pressure do not reapply within 24 hours.
- Do not apply more than 1 time per day.
- Do not apply more than 18.5 fl. oz. per 100 square feet per application.
- Do not use if temperatures are expected to be over 90°F.
- Do not apply this product in a way that will contact adults, children or pets, either directly or through drift.
- Remove pets, birds, and cover aquariums before spraying.
- Remove or cover exposed food and drinking water before application. Remove or cover dishes, utensils, food processing equipment, and food preparation surfaces, or wash them before use.
- Do not apply directly to or near water, storm drains, or drainage ditches. Do not apply when windy. To prevent product runoff, do not over water treated area(s) or apply prior to heavy rainfall.
- Do not apply directly into sewers or drains, or to any area like a gutter where drainage to storm sewers, water bodies, or aquatic habitat can occur. Do not allow the product to enter any drain during or after application.
- Do not allow adults, children or pets to enter the treated area until sprays have dried.
- Do not spray plants with SULFUR/PYRETHRINS FUNGICIDE/INSECTICIDE RTU within 21 days of an oil spray.

[How to Use:]

Shake well before using. Do not dilute.

FOR CONTROL OF FUNGAL DISEASES:

Controls a wide range of fungal diseases: blackspot, powdery mildew, rust, scab, blight, brown rot and leaf spot. Thoroughly spray all areas of the plant, especially new shoots. For best control apply as a protective spray early in the season before the diseases are noticed. Re-spray every 7 to 10 days or after rain. May be used up to day before harvest.

FOR CONTROL OF INSECTS/MITES:

Controls a wide range of pests: Ants (excluding fire ants, harvester ants, Pharaoh's ants and carpenter ants), Aphids (including Green Peach Aphids), Armyworms, Bagworms, Beet Armyworm, Beetles (including Asparagus Beetle, Bean Beetles, Blister Beetles, Colorado Potato Beetles, 12-spotted Cucumber Beetles, Cucumber Beetles, Darkling Beetles (lesser mealworm), Saw-toothed Grain Beetles, Elm Leaf Beetles, Flea Beetles, Japanese Beetles, Mexican and Bean Beetles), Blow Flies, Borers (including European Corn Borer, and Squash Vine Borer), Cabbage Looper, Cabbageworms (including Cross-striped Cabbageworm and Imported Cabbageworm), Cankerworms, Caterpillars (including Eastern Tent Caterpillar, Forest Caterpillar

Text in braces is for informational purposes only and will not appear on label

Text in brackets is optional language and may or may not appear on the label

Text in parentheses is language that will appear on the label

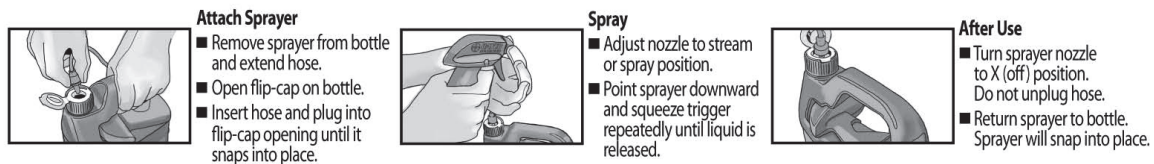
and Tent Caterpillar), Crane Flies, Crickets, Diamondback Moth Larvae, Earwigs, Fireworms, Fungus Gnats, Fruit Flies, Glassy Winged Sharpshooter, Grape Leaf Skeletonizer, Green Fruit Worm, Harlequin Bug, Hornworms including Tomato Hornworm, Katydid, Lace Bugs, Leafhoppers (including Grape Leafhopper, and Potato Leafhoppers), Leafminers, Leaf-tiers, Loopers, Leafrollers (including Fruittree Leafrollers), Lygus, Maggots (including Apple Maggot and Onion Maggot), Mealy Bugs, Midges, Millipedes, Mites (including Spider Mites and Clover Mite), Moths (including Artichoke Plume Moth, Codling Moth, Diamondback Moth, European Pine Tip Moth, Gypsy Moth (adults and larvae), Indian Meal Moth and Mediterranean Flour Moth), Mushroom Flies, Navel Orangeworm, Pear Psylla, Plant Bugs, Psyllids, Roseslugs, Scale, Silverfish, Skippers, Sowbugs, Spittlebugs, Squash Bugs, Stink Bugs, Tarnished Plant Bug, Thrips including Greenhouse Thrips, Vinegar Flies, Webworms, Weevils (including Boll Weevil, Carrot Weevil, Clover Weevil and Rice Weevil), Whiteflies.

Thoroughly spray all areas of the plant, especially new shoots and underside of leaves. Pests need to be contacted by the spray to be controlled.

For use only on residential lawns and gardens. Not for use on agricultural establishments growing agricultural crops or commodities for resale



{Optional sprayer instructions:}

{OPTION 1}



{OPTION 2: For Use with Quick Connect Sprayer}

[Quick Connect® Sprayer]

- Remove sprayer. Pull cord ALL THE WAY OUT.  {OR} 
- Insert (colour) plug into spout (on cap) until it clicks.
- [Flip up spout.]{or}[Twist spout/knob to ON] Open nozzle at end of sprayer.



{Subregistrants must choose one of the following options:}

{OPTION 1}

[Use Sites: For use indoor, outdoor and in greenhouses.

FRUIT AND NUT TREES: almond, apple, cherry, citrus, filbert, nectarine, peach, pear, plum, prune, walnut

Text in braces is for informational purposes only and will not appear on label

Text in brackets is optional language and may or may not appear on the label

Text in parentheses is language that will appear on the label

VEGETABLE AND VINE PLANTS: beans, beets, blackberries, blueberries, broccoli, Brussel's sprouts, cabbage, carrots, cauliflower, corn, cucurbits (cucumber, melons, pumpkins and squash), currant, gooseberries, grapes, kale, onions, peas, peppers, potatoes, raspberries, strawberries, tomatoes

ORNAMENTALS: flowering plants and shrubs, woody ornamentals, roses, trees and houseplants

LAWNS]

{OR}

{OPTION 2}

USE SITE – INDOOR, OUTDOOR AND GREENHOUSE	PEST	DISEASE
FRUIT AND NUT TREES: almond, apple, cherry, citrus, filbert, nectarine, peach, pear, plum, prune, walnut	Ants (excluding fire ants, harvester ants, Pharaoh's ants and carpenter ants), aphids, apple maggot, beetles, mites, moths, spider mites, leafhoppers, leafrollers, leafminers, caterpillars, whiteflies, spittlebugs, mealybugs, scale, thrips, psyllids, plant bugs, fruit flies, earwigs	scab, powdery mildew, rust, blight, brown rot
VEGETABLE AND VINE PLANTS: beans, beets, blackberries, blueberries, broccoli, brussel sprouts, cabbage, carrots, cauliflower, corn, cucurbits (cucumber, melons, pumpkins and squash), currant, gooseberries, grapes, kale, onions, peas, peppers, potatoes, raspberries, strawberries, tomatoes	Ants (excluding fire ants, harvester ants, Pharaoh's ants and carpenter ants), armyworms, beetles, cabbageworms, squash vine borer, armyworms, aphids, mites, spider mites, leafhoppers, leafrollers, leafminers, loopers, onion maggots, caterpillars, whiteflies, spittlebugs, mealybugs, scale, thrips, psyllids, plant bugs, fruit flies, earwigs, weevils	powdery mildew, rust, blight, leaf spots
ORNAMENTALS: flowering plants and shrubs, woody ornamentals, roses, trees and houseplants	Ants (excluding fire ants, harvester ants, Pharaoh's ants and carpenter ants), aphids, beetles, mites, spider mites, leafhoppers,	powdery mildew, rust, blight, blackspot, leaf spots

Text in braces is for informational purposes only and will not appear on label
Text in brackets is optional language and may or may not appear on the label
Text in parentheses is language that will appear on the label

	leafrollers, leafminers, armyworms, loopers, caterpillars, roseslugs, whiteflies, spittlebugs, mealybugs, scale, thrips, psyllids, plant bugs, lacebugs, earwigs, weevils	
LAWNS	aphids, mites, spider mites, leafhoppers, caterpillars, beetles, spittlebugs, thrips, earwigs	rust, leaf spot, blight, powdery mildew

]

{Note to PM: Registrant will select one of the following storage and disposal sections based on the type of container being used.}

[

STORAGE AND DISPOSAL {For use with non-refillable containers}

PESTICIDE STORAGE: Store at room temperature and protect from freezing.

PESTICIDE DISPOSAL AND CONTAINER HANDLING:

Nonrefillable. Do not reuse or refill this container.

If empty: Place in trash or offer for recycling if available.

If partly filled: Call your local solid waste agency for disposal instructions. Never place unused product down any indoor or outdoor drain.

{OR}

STORAGE AND DISPOSAL {For use with Quick Connect Sprayer}

PESTICIDE STORAGE: Completely discharge product in sprayer prior to storage. Flip down [colour] spout to close OR Twist spout/knob to off. NO NEED TO DISCONNECT TRIGGER SPRAYER. Close nozzle on trigger sprayer. Snap sprayer back into place. Store this product in its original container and keep in a secure storage area out of reach of children and domestic animals. Store unused material, tightly closed, in original container only, away from open flame.

PESTICIDE DISPOSAL AND CONTAINER HANDLING:

Nonrefillable. Do not reuse or refill this container.

If empty: Place in trash or offer for recycling if available.

If partly filled: Call your local solid waste agency for disposal instructions. Never place unused product down any indoor or outdoor drain.

]

BATCH CODE:

Text in braces is for informational purposes only and will not appear on label

Text in brackets is optional language and may or may not appear on the label

Text in parentheses is language that will appear on the label

{OPTIONAL marketing claims and product information that may or may not be used on the product's labeling.}

[

-3 IN 1

- (This product) Controls a wide range of listed fungal diseases and pests.
- Controls listed insects and fungal diseases on listed fruit, vegetables and ornamentals
- Controls listed fungal diseases, insects and mites
- Insect, fungal disease and mite control
- Controls listed insects, fungal diseases and mites, including spider mites
- Insecticide/Fungicide/Miticide
- Rose Fungicide, Insecticide and Miticide
- Protective rose spray
- Controls rose black spot
- Controls black spot, powdery mildew and rust
- Controls black spot, powdery mildew, rust, aphids and mites
- Controls a wide range of listed fungal rose diseases
- Controls aphids and mites
- Controls rose and listed fungal ornamental diseases
- Prevents leaf loss caused by black spot and rust
- Fungicide and Insecticide
- Contact killer for both listed insect and mite pests
- Controls (Aphids), (Mites), (Beetles), (crickets), (Ants (excluding fire ants, harvester ants, Pharaoh's ants and carpenter ants)), (weevils), (silverfish), (Caterpillars), (Whiteflies) and other listed insect pests
- Kills listed Fungus, Insects & Mites
- (Insect), (Fungus) Killer
- (Spider) Mite Killer
- For use on: (roses), (flowers), (houseplants), (ornamental trees and shrubs), (listed fruits), (listed nuts), (lawns) and (listed vegetables)
- For roses, listed vegetables & ornamentals.
- For use on listed plants- indoors & outdoors.
- For household home garden use.
- For use only on home lawns and gardens.
- (May be used) (Use) up to day before harvest
- Children and pets can enter the treated area after sprays have dried.
- Ideal for controlling listed rose diseases.
- Sulfur fungicides are widely regarded as providing effective control of several major fungal diseases.
- SULFUR/PYRETHRINS FUNGICIDE/INSECTICIDE RTU can be used on inside plants.
- Proper plant nutrition, and removing dead or damaged leaves will also reduce fungal disease and insect problems.
- Wet weather promotes plant diseases.
- SATISFACTION GUARANTEED or your money back.
- Can be used in vegetable gardens.
- Can be used on roses, listed vegetables, fruits and ornamentals.
- Read Entire Container Label Before Using This Product.
- Read the Label First!
- Quick Facts:
- Kills: (Aphids), (mites), (spider mites), (Beetles), (crickets), (Ants (excluding fire ants, harvester ants, Pharaoh's ants and carpenter ants)), (weevils), (silverfish), (leafhoppers), (caterpillars), (rose slugs), (whiteflies), (spittlebugs), (mealybugs), (scale), (thrips), (psyllids), (plant bugs), (lacebugs), (fruit flies), and (earwigs).
- Fungal diseases controlled: (blackspot), (powdery mildew), (rust), (scab), (blight), (brown rot) and (leaf spot).

Text in braces is for informational purposes only and will not appear on label

Text in brackets is optional language and may or may not appear on the label

Text in parentheses is language that will appear on the label

- Where to Use: On (roses), (flowers), listed (fruit and nut trees), (vegetables), (vine plants), (ornamentals) and (lawns).
- When to Use: When insects, insect damage, or fungal disease first appears.
- Convenient. Easy-to-use. Requires no mixing.
- For emergency medical information call 1-XXX-XXX-XXXX
- For questions or comments, call toll free 1-XXX-XXX-XXXX
- [phone icon] Questions, comments (or medical information) X-XXX-XXX-XXXX (insert company website) [computer icon]
- © 20XX Licensed (insert company name). World rights reserved.
- Manufactured. Distributed by: (insert company name)
- Made in/Produced in: _____(from US and imported products/parts)
- See back (booklet) label for first aid
- See back panel (booklet) for first aid and additional precautionary statements
- This container is made with a minimum X% recycled material
- Designed for GardenPro (/Independent) Retailers
- (Insert company website)
- Superscript is first letter of lot number
-

PRODUCT FACTS	
INSECTS AND FUNGAL DISEASES CONTROLLED	Black spot, powdery mildew, rust, spider mites, aphids, caterpillars, and other insect pests
WHERE TO USE	Use on roses, flowers, houseplants, ornamental trees and shrubs, fruits, nuts, and vegetables in and around the home and home garden.
[INSERT BRAND NAME] & YOUR ENVIRONMENT Your home and yard are places for family and pets to enjoy. That's why [brand name] products are designed with care to provide effective solutions to insect problems inside and outside your home. For best results please follow instructions for appropriate usage, storage and disposal.	

USE SITE – INDOOR, OUTDOOR AND GREENHOUSE	PEST	DISEASE
[Insert any or all of the following:] FRUIT AND NUT TREES: almond, apple, cherry, citrus, filbert, nectarine, peach, pear, plum, prune, walnut VEGETABLE AND VINE PLANTS: beans, beets, blackberries, blueberries, broccoli, Brussel's sprouts, cabbage, carrots, cauliflower, celery, corn, cucurbits (cucumber, melons, pumpkins and squash), currant, gooseberries, grapes, kale, lettuce, onions, peas, peppers,	[Insert any or all of the following:] Ants (excluding fire ants, harvester ants, Pharaoh's ants and carpenter ants), Aphids (including Green Peach Aphids), Armyworms, Bagworms, Beet Armyworm, Beetles (including Asparagus Beetle, Bean Beetles, Blister Beetles, Colorado Potato Beetles, 12-spotted Cucumber Beetles, Cucumber Beetles, Darkling Beetles (lesser mealworm), Saw-toothed Grain Beetles, Elm Leaf Beetles, Flea Beetles, Japanese Beetles, Mexican and Bean Beetles), , Blow Flies, Borers (including European Corn Borer, and Squash Vine Borer), Cabbage Looper, Cabbageworms (including Cross-striped Cabbageworm and Imported Cabbageworm), Cankerworms, Caterpillars (including Eastern Tent Caterpillar, Forest Caterpillar and Tent Caterpillar), Crane Flies, Crickets, Diamondback Moth Larvae, Earwigs,	[Insert any or all of the following:] blackspot, powdery mildew, rust, scab, blight, brown rot and leaf spot

Text in braces is for informational purposes only and will not appear on label
Text in brackets is optional language and may or may not appear on the label
Text in parentheses is language that will appear on the label

potatoes, raspberries, radish, strawberries, tomatoes HERBS ORNAMENTALS: flowering plants and shrubs, woody ornamentals, roses, trees and houseplants LAWNS	Fireworms, Fungus Gnats, Fruit Flies, Glassy Winged Sharpshooter , Grape Leaf Skeletonizer, Green Fruit Worm, Harlequin Bug, Hornworms including Tomato Hornworm, Katydid, Lace Bugs, Leafhoppers (including Grape Leafhopper, and Potato Leafhoppers), Leafminers, Leaf tiers, Loopers, Leafrollers (including Fruittree Leafrollers), Lygus, Maggots (including Apple Maggot and Onion Maggot), Mealy Bugs, Midges, Millipedes, Mites (including Spider Mites and Clover Mite), Moths (including Artichoke Plume Moth, Codling Moth, Diamondback Moth, European Pine Tip Moth, Gypsy Moth (adults and larvae), Indian Meal Moth and Mediterranean Flour Moth), Mushroom Flies, Navel Orangeworm, Pear Psylla, Plant Bugs, Psyllids, Roseslugs, Scale, Silverfish, Skippers, Sowbugs, Spittlebugs, Squash Bugs, Stink Bugs, Tarnished Plant Bug, Thrips including Greenhouse Thrips, Vinegar Flies, Webworms, Weevils (including Boll Weevil, Carrot Weevil Clover Weevil and Rice Weevil), Whiteflies.	
--	--	--



]

[when The Scotts Company uses the brand name Ecosense when selling or distributing this product, it must place a qualifying symbol after the brand name and, in close proximity to the brand name, place the statement 'economically sensible alternative pest control']

{The registrant may use one or more of these optional warranty statements, either:}

[

NOTICE TO BUYER

To the extent consistent with applicable law, seller warrants that this product conforms to the chemical description on this label and is reasonably fit for the purposes stated on this label only when used in accordance with directions under normal use conditions. This warranty does not extend to use of this product contrary to label directions, or under conditions not reasonably foreseeable to seller. To the extent consistent with applicable law, seller makes no other warranties, either express or implied.

{OR}

To the extent consistent with applicable law, buyer assumes all responsibility for safety and use not in accordance with directions.

Text in braces is for informational purposes only and will not appear on label

Text in brackets is optional language and may or may not appear on the label

Text in parentheses is language that will appear on the label

{OR}

[The] (Insert Company name) Guarantee- If for any reason you are not satisfied with this product, mail us proof of purchase to obtain a full refund of your purchase price.

{OR}

Money Back Guarantee: If you are not satisfied with this product, we will gladly refund your original purchase price.]

Registrant: W. Neudorff GmbH KG, An der Mühle 3, 31860 Emmerthal, Germany

{Supplemental distributors will use one of these two optional statements, either:}

[

-Sold under a license of "W. Neudorff GmbH KG, Germany"

{OR}

-Manufactured under [a] license of "W. Neudorff GmbH KG [, Germany]"

