



UNITED STATES ENVIRONMENTAL PROTECTION AGENCY
WASHINGTON, DC 20460

OFFICE OF CHEMICAL SAFETY
AND POLLUTION PREVENTION

March 24, 2016

W. Neudorff GmbH KG
c/o Walter G. Talarek PC
1008 Riva Ridge Road
Great Falls, VA 22066-1620

Subject: Label Amendment – add alternate brand names and revise label to make to easier to read
Product Name: HO2 Moss Killer Concentrate
EPA Registration Number: 67702-12
Application Date: February 26, 2016
Decision Number: 514575

Dear Mr. Talarek:

The amended label referred to above, submitted in connection with registration under the Federal Insecticide, Fungicide and Rodenticide Act, as amended, is acceptable. This approval does not affect any conditions that were previously imposed on this registration. You continue to be subject to existing conditions on your registration and any deadlines connected with them.

A stamped copy of your labeling is enclosed for your records. This labeling supersedes all previously accepted labeling. You must submit one copy of the final printed labeling before you release the product for shipment with the new labeling. In accordance with 40 CFR 152.130(c), you may distribute or sell this product under the previously approved labeling for 18 months from the date of this letter. After 18 months, you may only distribute or sell this product if it bears this new revised labeling or subsequently approved labeling. "To distribute or sell" is defined under FIFRA section 2(gg) and its implementing regulation at 40 CFR 152.3.

Should you wish to add/retain a reference to the company's website on your label, then please be aware that the website becomes labeling under the Federal Insecticide Fungicide and Rodenticide Act and is subject to review by the Agency. If the website is false or misleading, the product would be misbranded and unlawful to sell or distribute under FIFRA section 12(a)(1)(E). 40 CFR 156.10(a)(5) list examples of statements EPA may consider false or misleading. In addition, regardless of whether a website is referenced on your product's label, claims made on the website may not substantially differ from those claims approved through the registration process. Therefore, should the Agency find or if it is brought to our attention that a website contains false or misleading statements or claims substantially differing from the EPA approved registration, the website will be referred to the EPA's Office of Enforcement and Compliance.

Page 2 of 2
EPA Reg. No. 67702-12
Decision No. 514575

Your release for shipment of the product constitutes acceptance of these conditions. If these conditions are not complied with, the registration will be subject to cancellation in accordance with FIFRA section 6. If you have any questions, please contact Linda A. DeLuise by phone at 703-305-5428, or via email at deluise.linda@epa.gov.

Sincerely,

A handwritten signature in cursive script, appearing to read "Gebken", written in black ink.

Richard Gebken
Product Manager 10
Invertebrate & Vertebrate Branch 2
Office of Pesticide Programs

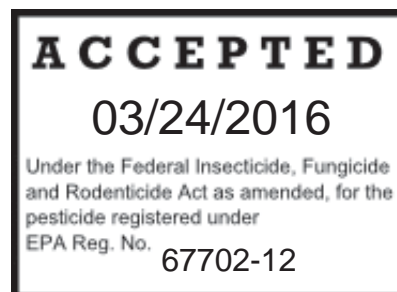
Enclosure

All text in brackets [xxx] is optional and may or may not be included on the final label.
All text in braces {xxx} is for information purposes and will not appear on the final label.
Revised March 23, 2016

H02 MOSS KILLER CONCENTRATE

[ABN: Moss-Aside Moss Killer]
[ABN: RapidGo]

| | |
|--------------------------------|---------------|
| Active Ingredient: | |
| Potassium salts of fatty acids | 22.11% |
| Other Ingredients: | <u>77.89%</u> |
| Total: | 100.00% |



SUBLABEL A: Residential Use
SUBLABEL B: Commercial Use

KEEP OUT OF REACH OF CHILDREN

WARNING/AVISO

Si usted no entiende la etiqueta busque para que se la explique a usted en detalle. (If you do not understand the label, find someone to explain it to you in detail.)

EPA REG. NO. 67702-12

EPA EST. NO.

Registrant: W. Neudorff GmbH KG,
Postfach 1209, An der Mühle 3,
31860 Emmerthal, Germany

Residential Use: NET CONTENTS: 8oz, 16oz, 24oz, 32oz, 40oz, 64 oz, 128 oz, 55 gallons, 200 gallons and 211 gallons (800 Liters), 250 gallons

Commercial Use: NET CONTENTS: 0.5 gallon, 1 gallon, 5 gallons, 20 gallons, 55 gallon, 200 gallons and 211 gallons (800 liters), 250 gallons

All text in brackets [xxx] is optional and may or may not be included on the final label.
All text in braces {xxx} is for information purposes and will not appear on the final label.
Revised March 23, 2016

{SUBLABEL A: Residential Use}

H02 MOSS KILLER CONCENTRATE

Active Ingredient:

Potassium salts of fatty acids 22.11%

Other Ingredients: 77.89%

Total: 100.00%

KEEP OUT OF REACH OF CHILDREN

WARNING

EPA REG. NO. 67702-12

EPA EST. No.

NET CONTENTS: 8oz, 16oz, 24oz, 32oz, 40oz, 64 oz, 128 oz, 55 gallons, 200 gallons and 211 gallons (800 Liters), 250 gallons

FIRST AID

| | |
|------------------------|--|
| IF IN EYES | -Hold eye open and rinse slowly and gently with water for 15-20 minutes. -Remove contact lenses, if present, after the first 5 minutes, then continue rinsing. -Call a poison control center or doctor for treatment advice. |
| IF ON SKIN OR CLOTHING | -Take off contaminated clothing. -Rinse skin immediately with plenty of water for 15-20 minutes. -Call a poison control center or doctor for treatment advice. |

Have the product container or label with you when calling a poison control center or doctor or going for treatment. [For additional information on this pesticide product, you may call the National Pesticide Information Center at 1-800-858-7378 for emergency medical treatment information [alternatively, supplemental distributors may insert their own toll free numbers and hours of operation.]]

PRECAUTIONARY STATEMENTS

HAZARDS TO HUMANS AND DOMESTIC ANIMALS

WARNING: Causes substantial but temporary eye injury. Causes skin irritation. Do not get in eyes, on skin or on clothing. Wear protective eyewear (goggles, face shield or safety glasses). Wash thoroughly with soap and water after handling. Remove contaminated clothing and wash before reuse.

All text in brackets [xxx] is optional and may or may not be included on the final label.
All text in braces {xxx} is for information purposes and will not appear on the final label.
Revised March 23, 2016

ENVIRONMENTAL HAZARDS

This product may be hazardous to aquatic invertebrates. To protect the environment, do not allow pesticide to enter or run off into storm drains, drainage ditches, gutters or surface waters. Applying this product in calm weather or when rain is not predicted for the next 24 hours will help to ensure that wind or rain does not blow or wash pesticide off the treatment area. Rinsing application equipment over the treated area will help avoid run off to water bodies or drainage systems.

DIRECTIONS FOR USE

It is a violation of Federal Law to use this product in a manner inconsistent with its labeling.

Read and follow all applicable directions and precautions on this label before using.

PESTS: H02 Moss Killer Concentrate is effective in controlling mold*, mildew*, mosses, algae, lichens, and liverworts.

*not including species considered public health pests

{The registrant may use one of the two statements}

SITES: H02 Moss Killer Concentrate may be used on lawns, playgrounds, ornamental gardens, around and on homes, other buildings, and home greenhouses; roofs; cedar shakes and composition shingles; cedar siding; stucco; cedar, redwood and CCA-treated wood decks and fences; brick, stone and concrete walkways, sidewalks and driveways; growing containers; other structural surfaces; hardened bark of trees; bark mulch; pavement; gravel; patios; asphalt; automobile exteriors; and the exteriors of motor homes and boats.

{OR}

Where to Use:

- [H02 Moss Killer Concentrate] may be used on lawns, playgrounds and ornamental gardens.

- [H02 Moss Killer Concentrate] may be used around and on homes and other buildings, and home greenhouses. It may be used on: pavement; gravel; patios; asphalt; automobile exteriors; and the exteriors of motor homes and boats; hardened bark of trees; bark mulch; brick, stone and concrete walkways, sidewalks and driveways; growing containers; other structural surfaces; roofs; cedar shakes and composition shingles; cedar siding; stucco; cedar, redwood and CCA-treated wood decks and fences.]

APPLICATION DIRECTIONS

{The registrant may use one of the two Application Directions sections}

All text in brackets [xxx] is optional and may or may not be included on the final label.
All text in braces {xxx} is for information purposes and will not appear on the final label.
Revised March 23, 2016

[Domestic Lawns, Playgrounds and Ornamental Gardens:] Dilute concentrate by mixing one part concentrate with 19 parts water (6.8 fl. oz in 1 gallon water). Thoroughly soak moss with solution, applying 12 to 25 gallons per 1000 ft². [For thick moss (greater than 1 inch), use up to 50 gallons per 1000 ft²]. Lightly rinse treated areas with water (1 gallon per 1000 ft² or less) 15 to 30 minutes after treatment to avoid grass and plant damage. Test spray a small area prior to using. Do not heavily irrigate for at least 6 hours. Re-apply every 2 weeks or as required. If it rains within one day of treatment, an additional application may be required. Moss will turn brown after a few days. Areas can be re-sown 5 days after treatment.

[Other Sites][Hard surfaces]: Dilute concentrate by mixing one part concentrate with 9 to 19 parts water (6.8 to 13 fl. oz in 1 gallon water). Apply 8 to 12 gallons of solution per 1000 ft². [For thick moss (greater than 1 inch), use 25 gallons of solution per 1000 ft². If moss is dry, thoroughly wet moss with water before treating]. Repeat treatment annually, or when new [mold], [mildew], [moss], [algae], [lichens] or [liverworts] are visible.

Automobiles, Motor Homes and Boats: Use on the outside surfaces only. Spray thoroughly with soap solution using hose-end sprayer. [Optional: Alternatively, dilute concentrate by mixing one part concentrate with 19 parts water (6.8 fl. oz in 1 gallon water) in a pail and apply to surfaces using a brush.] Scrub surfaces thoroughly and rinse with water.

{OR}

{For use with hose-end sprayer}

Playgrounds, Domestic Lawns and Ornamental Gardens:

Thoroughly soak mold*, mildew*, mosses, algae, lichens, and liverworts with solution, This XX fl. Oz. bottle will cover XX sq. ft. Test spray a small area prior to using. Do not heavily irrigate for at least 6 hours. Reapply every two weeks as molds, mildews, mosses, algae, lichens or liverworts reappear. If it rains within one day of treatment, an additional application may be required. Moss will turn brown after a few days. Areas can be re-sown 5 days after treatment.

*not including species considered public health pests

[Other Sites][Hard Surfaces]: Thoroughly soak mold*, mildew*, mosses, algae, lichens, and liverworts with solution, This XX fl. Oz. bottle will cover XX sq. ft. Repeat treatment annually, or when new [mold], [mildew], [moss], [algae], [lichens] or [liverworts] are visible.

Automobiles, Motor Homes and Boats: Use on the outside surfaces only. Spray thoroughly with soap solution using hose-end sprayer. Scrub surfaces thoroughly and rinse with water.

All text in brackets [xxx] is optional and may or may not be included on the final label.
All text in braces {xxx} is for information purposes and will not appear on the final label.
Revised March 23, 2016

]

WHEN TO USE: H02 Moss Killer Concentrate can be used at any time during the year. [Best results are obtained with actively growing moss in the spring or fall. Do not use on lawns when temperature exceeds 85°F.] During warmer weather apply late in the day. Application during cold weather may delay appearance of [moss], [mold] and [mildew] damage.

{The registrant may use one of the following methods of application sections}

[METHODS OF APPLICATION: Apply with any standard hand-held sprayer, backpack sprayer, tank sprayer, [hose-end sprayer (optional method)], mop, watering can or brush. Keep sprayer moving to get an even application. In areas of hard water, use water softeners.

{OR}

METHODS OF APPLICATION: Apply with hose-end sprayer. Keep sprayer moving to get an even application. [In areas of hard water, use water softeners.]

{Optional hose-end sprayer directions that may be presented on the container or supplemental wording, either}

-Hose-End Sprayer Directions

Follow the directions for using the Hose-End sprayer. This XXX gallon bottle will cover up to XXX square feet.

How to use hose-end sprayer:

Remove the closure and save it for resealing the container when you are finished.

Insert the dip tube of the hose-end applicator into the bottle and seal the applicator head tightly to the bottle.

Connect spray nozzle to garden hose.

Turn on the water from the faucet.

When you are ready to spray, turn the blue knob on top so that it points to the MIX position on the spray head. (Fig. 1)

The spray deflector on the front of the hose-end applicator can be rotated to give a stream or fan spray. (Fig. 2)

When treating lawns, wait 15 to 30 minutes after spraying, and then lightly rinse treated area with water by using the H2O setting on the sprayer. This will reduce the likelihood of grass damage. Roofs and walls do not require rinsing.

To stop spraying:

When you are finished spraying or if you have to stop spraying at any time, turn the blue knob back to the OFF position. (Fig. 3)

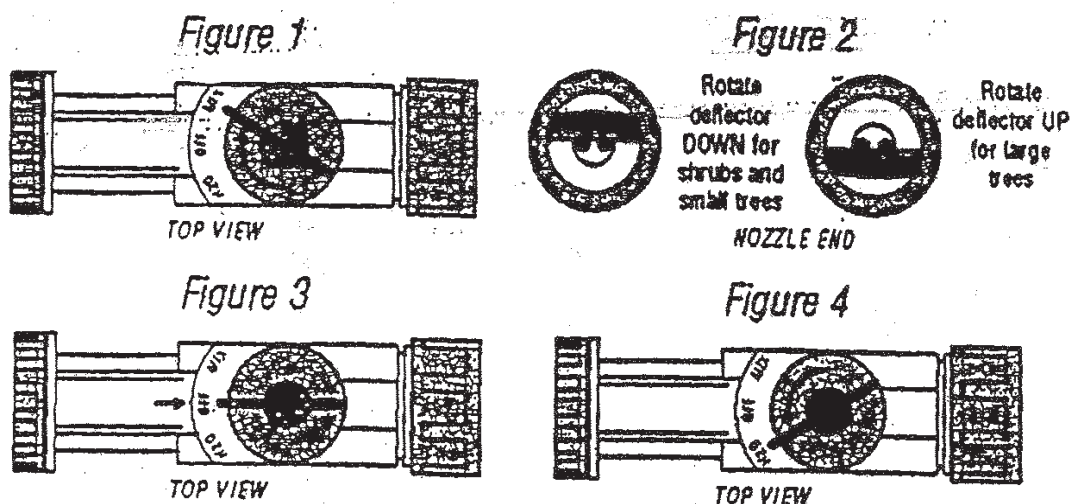
Turn off the water from the faucet.

All text in brackets [xxx] is optional and may or may not be included on the final label.
 All text in braces {xxx} is for information purposes and will not appear on the final label.
 Revised March 23, 2016

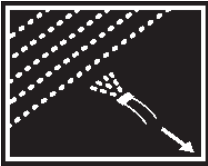
Turn the blue knob to H₂O then OFF, to drain the water from the hose. (Fig. 4)
 Unscrew spray nozzle from hose. Remove hose-end from container.
 Reseal the container with the child-resistant closure. Rinse the hose-end applicator.]

{Optional Figure}

{Diagrams of Hose-End Sprayer}



{OR}

| | |
|--|---|
| <p>HOW TO USE</p> <p>Shake Before Use</p> <p>Well</p> | <p>CONNECT 1. Shake well before use. Connect sprayer to garden hose. Turn on water.</p> <p>SPRAY 1. Extend hose to farthest area to be treated, point sprayer nozzle in direction to be sprayed. Begin spraying <Insert sprayer-specific language here></p> <p><i>Hayes HP-2 and Calmar RTS sprayers:</i> Press lock tab while using other hand to turn sprayer valve to ON position.</p> <p><i>Green Garden RTS sprayer:</i> Turn sprayer valve to ON position.</p>  |
|--|---|

All text in brackets [xxx] is optional and may or may not be included on the final label.
All text in braces {xxx} is for information purposes and will not appear on the final label.
Revised March 23, 2016

| | |
|--|---|
| | <p>Walk at a steady pace while spraying, using an even sweeping motion, and slightly overlap the treated areas. Work back toward the faucet to avoid walking over wet, treated grass.</p> <p>FINISH 1. To stop spraying, < Insert sprayer-specific language here.></p> <p><i>Hayes HP-2 RTS sprayer:</i> Press lock tab while using other hand to turn sprayer valve to OFF position.</p> <p>Calmar & Green Garden RTS sprayers: turn sprayer valve to OFF position.</p> <p>Turn off water at faucet. Relieve water pressure in hose by turning sprayer valve back to WATER position until water slows to a drip then turn sprayer valve to OFF position. Disconnect sprayer from hose.</p> |
|--|---|

{OR}

HOSE END SPRAYER INSTRUCTIONS

Shake before using.

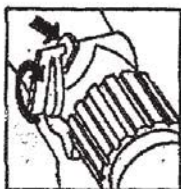


HOW TO USE:

1. Attach garden hose to spray nozzle.
2. Turn on water supply.



4. Point nozzle toward plants and turn water control knob to "On". Product will automatically mix with water. Spray upper and lower leaf surfaces thoroughly.



3. Bend safety tab down and turn control to "water".



{OR}

All text in brackets [xxx] is optional and may or may not be included on the final label.
All text in braces {xxx} is for information purposes and will not appear on the final label.
Revised March 23, 2016

Test Spray Small Area Prior To Using.

Hose-End Sprayer Directions:

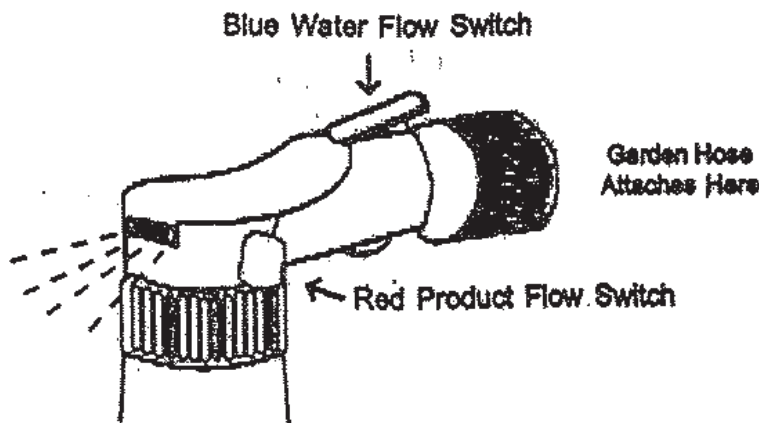
This 1 quart bottle will cover up to 500 square feet.

1. Before attaching the sprayer to garden hose, make sure that the blue water flow switch is in the "OFF" position and the red product flow switch is in the up, "CLOSED" position.
2. Connect spray nozzle to garden hose while pointing sprayer in a direction away from face and body.
3. Remove the white plastic safety tab marked "PULL OUT" in front of the red product flow switch.
4. To begin spraying, turn on water at the faucet; move blue water flow switch to the "ON" position; and, turn red product flow switch to the forward, "OPEN" position.

To Stop Spraying:

1. Turn blue water flow switch to "OFF" position and red product flow switch to "CLOSED" position.
2. Turn off the water at the faucet.
3. Unscrew spray nozzle from garden hose, rinse outside of container and store any unused product according to the Storage and Disposal Directions.

Optional Diagram



{OR}

Connect your garden hose to the bottle. Be sure the blue water control valve on top of the spray nozzle is in the OFF position. Turn on water at faucet.

Twist the small, star-shaped, blue product-control button to align the flat portion with the lock tab. Push the button in to open.

All text in brackets [xxx] is optional and may or may not be included on the final label.
All text in braces {xxx} is for information purposes and will not appear on the final label.
Revised March 23, 2016

To begin spraying, point nozzle toward the area to be treated and turn the blue water control valve to the ON position. Tab will be horizontal. Water automatically mixes with the concentrate as you spray. Spray surfaces thoroughly.

To stop spraying, turn the blue water control valve on top of the spray nozzle to OFF. To close, push in the small round button opposite the star-shaped product-control button. Turn off faucet.

Relieve water pressure by turning blue water control valve to the ON position until water slows to a drip. Turn blue water control valve back to OFF. Disconnect garden hose from bottle.

{Optional Diagram}



{OR}

1. Attach garden hose to spray nozzle. Turn on water supply.
2. Bend safety tab down and turn control to "water".
3. Point nozzle toward plants and turn water control knob to "On". Product will automatically mix with water. Spray upper and lower leaf surfaces thoroughly.

To Stop Spraying:

When you are finished spraying or if you have to stop spraying at any time, turn the blue knob back to the OFF position.

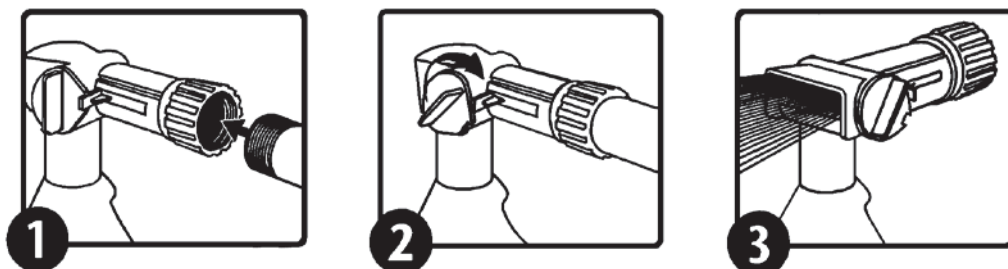
Turn off the water from the faucet.

Turn the blue knob to H₂O then OFF, to drain the water from the hose.

Unscrew spray nozzle from hose. Remove hose end from container.

Reseal the container with the child-resistant closure. Rinse the hose-end applicator

All text in brackets [xxx] is optional and may or may not be included on the final label.
All text in braces {xxx} is for information purposes and will not appear on the final label.
Revised March 23, 2016



{OR}

Shake container well before using.

Connect a garden hose to the Ready Spray nozzle. Make sure the dial on the nozzle is in the “OFF” position with the safety tab in the valve notch.

Turn on the water at faucet. Extend hose to the farthest area to be treated and work back toward the faucet so you don’t come in contact with the treated area.

To BEGIN spraying, point nozzle toward treatment site and

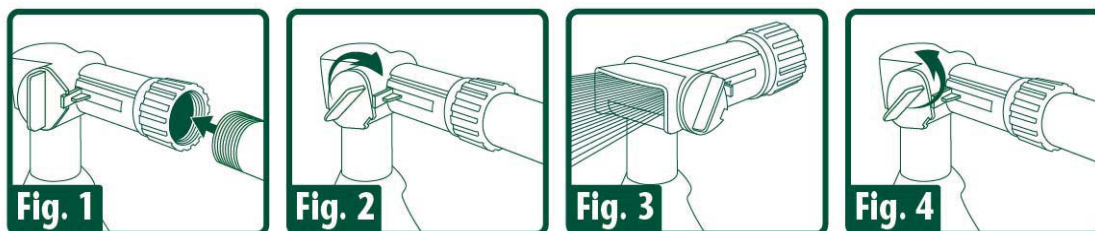
Bend the safety tab back (located at the right of the yellow dial) with your thumb,

Using your other hand, QUICKLY turn the dial clockwise until it stops. Water will automatically mix with the product.

Spray moss thoroughly. Walk at a steady pace while spraying using an even sweeping motion, slightly overlapping treated areas.

To STOP spraying, QUICKLY turn the dial in the opposite direction of “ON” until it stops and the safety tab engages the notch on the valve. Turn water off at faucet. To relieve pressure before removing nozzle from hose, bend the safety tab back and turn dial “ON” until water stops spraying.

To STORE unused product, make sure the dial is in the “OFF” position with safety tab in the valve notch. Place in cool area away from heat, sunlight or open flame.



{OR}

Dynasty Hose End Sprayer Directions:

This 1 quart bottle will cover up to 500 square feet.

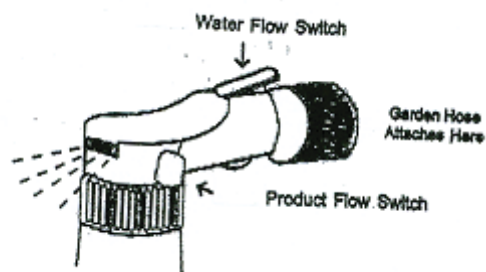
All text in brackets [xxx] is optional and may or may not be included on the final label.
 All text in braces {xxx} is for information purposes and will not appear on the final label.
 Revised March 23, 2016

1. Before attaching the sprayer to garden hose, make sure that the Water Flow Switch (top switch) is in the "OFF" (to the rear) position.
2. Connect spray nozzle to garden hose while pointing sprayer in a direction away from face and body.
3. Remove the safety pin in front of the Product Flow Switch (side switch).
4. Rotate Product Flow Switch pin forward 90 deg. to the "ON" position.
5. Aim front of nozzle toward area to be covered and begin spraying by moving water valve (top switch) to the "ON" position (forward).

To Stop Spraying:

1. Turn Water Flow Switch (top switch) to "OFF" position (to the rear) and Product Flow Switch (side switch) back to the "OFF" position.
2. Turn off the water at the faucet.
3. Unscrew spray nozzle from garden hose, rinse outside of container and store any unused product according to the Storage and Disposal Directions.

Optional Diagram



{OR}

| APPLICATION DIRECTIONS FOR Ready-Spray | |
|---|---|
| Follow the directions for using the Hose-End Sprayer. This 32 oz. bottle will cover up to 500 sq. ft. | |
| CONNECT | Shake well before using. Connect sprayer to hose. Turn on water. |
| SPRAY | Extend the hose to the farthest point in the lawn or garden away from the water faucet. This will minimize walking on the treated area. To begin spraying, point nozzle in the direction you want to spray. Bend small plastic tab back and turn knob clockwise to ON position. Spray as directed. |
| FINISH | To stop spraying, bend small (insert: color of applicator) plastic tab back and |

All text in brackets [xxx] is optional and may or may not be included on the final label.
 All text in braces {xxx} is for information purposes and will not appear on the final label.
 Revised March 23, 2016

| | |
|--|---|
| | turn knob counter-clockwise to OFF position. Turn off water. Relieve water pressure by bending the plastic tab back and turning knob to ON position until water slows to a drip. Then, turn knob back to OFF position. Disconnect sprayer from hose. |
|--|---|

{OR}

| | |
|--|---|
| Ready-Spray® II / Ready-Spray® 2 / (Applicator Name) [Hose End Applicator] Shake container gently before using. This 32 oz bottle will cover up to 500 sq ft. | |
| Connect: [illustration] | [Connect] [Attach] [sprayer] [bottle] to [hose] [end of hose]. Turn on water. |
| Spray: [illustration] | To begin spraying, [disengage safety lock and] point nozzle in the direction you want to spray. Slide thumb activation switch forward to ON position. Apply evenly to [surfaces and] lawns. Spray as directed. |
| Finish: [illustration] | To STOP spraying, slide thumb activation switch to OFF position. Turn off water. Relieve water pressure by sliding thumb switch to [ON] [WATER] [WATER ONLY] position until water slows to a drip. Then, slide switch back to OFF position [and engage safety lock]. Disconnect the sprayer from hose. |

{OR}

-Hose-End Sprayer Directions

Follow the directions for using the Hose-End sprayer. This XXX gallon bottle will cover up to XXX square feet.

How to use hose-end sprayer:

1. Connect spray nozzle to garden hose.
2. Turn on the water from the faucet.
3. When you are ready to spray, turn the knob so that it points to the ON position.
4. The spray deflector on the front of the hose-end applicator can be rotated to give a stream or fan spray.
5. When treating lawns, wait 15 to 30 minutes after spraying, and then lightly rinse treated area with water. This will reduce the likelihood of grass damage. Roofs and walls do not require rinsing.

All text in brackets [xxx] is optional and may or may not be included on the final label.
All text in braces {xxx} is for information purposes and will not appear on the final label.
Revised March 23, 2016

To stop spraying:

1. When you are finished spraying or if you have to stop spraying at any time, turn the knob back to the OFF position.
2. Turn off the water from the faucet.
3. Unscrew spray nozzle from hose.

{OR}

[Optional Sprayer Directions]

[CONNECT

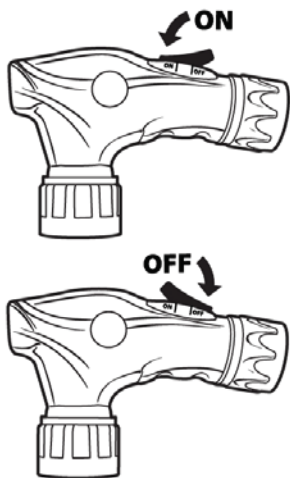
1. Shake well before use.
2. Securely Connect sprayer to garden hose.
3. Be sure that ON/OFF Switch is in OFF position, toward hose end of sprayer.
4. Turn on water at faucet.
5. For first time use, remove plastic shipping lock from beneath switch.

SPRAY

1. Extend hose to farthest area to be treated, point sprayer nozzle in direction to be sprayed.
2. Begin spraying - Push ON/OFF Switch forward into ON position.
3. Walk at a steady pace while spraying, using an even sweeping motion, and slightly overlap treated areas. Work back toward faucet to avoid walking over wet, treated grass.

FINISH

1. To stop spraying, push ON/OFF Switch to OFF position.
2. Turn off water at faucet.
3. Relieve water pressure in hose by turning ON/OFF Switch back to ON position until water slows to a drip, then return ON/OFF switch to OFF position.
4. Disconnect sprayer from hose.]



STORAGE AND DISPOSAL

STORAGE: Store this product in its original container and keep in a secure storage area out of reach of children and domestic animals. Store unused material, tightly closed, in original container only, away from open flame. Do not store at temperatures below 32°F.

CONTAINER DISPOSAL:

All text in brackets [xxx] is optional and may or may not be included on the final label.
All text in braces {xxx} is for information purposes and will not appear on the final label.
Revised March 23, 2016

If empty: Nonrefillable container. Do not reuse or refill this container. Place in trash or offer for recycling if available.

If partly filled: Call your local solid waste agency for disposal instructions. Never place unused product down any indoor or outdoor drain.

{Optional marketing claims and product information that may be presented on the container label or supplemental labeling}

[

-Quick Facts

-Read the label first!

-Eliminates unwanted moss, algae and lichens quickly

-Kills within hours

-Fast acting

-Kills [mold], [liverworts], [mildew], [algae], [moss] and [lichens][quickly and effectively]

- [mold], [mildew], [algae], [moss], [lichen] and [liverwort] killer.

- Spray on, [clean off] [kills] [moss], [liverworts], [mold], [mildew], [lichens] & [algae]

- Removal of [moss], [liverworts], [mold], [mildew], [lichens] & [algae] from surfaces

- Controls [moss], [liverworts], [mold], [mildew], [lichens] & [algae] on exterior surfaces

- Cleans surface [moss], [liverworts], [mold], [mildew], [lichens] & [algae]

- [moss], [mold], [liverwort], [mildew], [lichens] & [algae] remover

-Soap for killing moss.

-Kills moss fast.

- Rapid exterior cleaner for decks, patios and exterior home surfaces

- Rapid exterior moss, mold and mildew remover for decks, patios and exterior home surfaces

-Removes green slime.

-Water based.

-Does not contain alcohol.

-Does not contain any metal salts, such as iron or zinc.

-No unpleasant odor.

-Low foaming.

-[Will not][Does not][Won't] stain [concrete], [pavement], [stucco], [bricks], [asphalt] [wood] [or other surfaces].

-Diluted H₂O₂ Moss Killer Concentrate will not damage painted and metal surfaces.

-Will [Does] not darken grass.

-Will [Does] not damage gutters, metal flashing or downspouts.

- H₂O₂ Moss Killer Concentrate can provide long-term control of moss on wooden roofs and structures.

-Controlling moss and algae may add months or years of service to roofs, patios, decks, and such areas.

- H₂O₂ Moss Killer Concentrate is a fast acting [moss], [liverwort], [mold], [mildew], [lichens] & [algae] killer for use on [lawns], [roofs], [sidewalks], [buildings], [fences], [decks], [patios], [bark mulch], [driveways], and [gravel].

-[Kills][Destroys] [moss][mold] to prolong life of roofs, decks, patios and walks.

-For use on lawns, patios plus roofs & buildings.

All text in brackets [xxx] is optional and may or may not be included on the final label.
All text in braces {xxx} is for information purposes and will not appear on the final label.
Revised March 23, 2016

- Use on [roofs], [lawns]
- Higher concentrations of H₂O₂ Moss Killer Concentrate (10% and higher) may damage some plants. Rinse off of plants and automobiles that are accidentally sprayed.
- For best results on lawns use the higher spray volumes and thoroughly soak moss.
- Spray treated structures with water 1 week after treatment to remove dead moss and algae.
- For best results, physically remove dead moss one week after treatment.
- Pressure washing is a good method of removing dead moss from roofs.
- When spraying roofs it is best to spray “up-slope” to thoroughly treat the ends of the shingles.
- Freshly treated areas may be slippery. To avoid falling do not walk on freshly treated areas. Rinse treated walkways 1 day after treating to reduce slipperiness.
- In case of overspray onto non-target (desirable) plants, rinse immediately to avoid any possible damage.
- One gallon of concentrate will treat up to XXXX ft² of [lawn], [turf], [roof or siding].
- Will not harm adjacent plants when used according to directions.
- May be used on moss, algae and lichens on mature, dormant trees, bark mulch, patios, benches, greenhouses, growing containers, gravel and structural surfaces.
- Ideal for use around homes and other buildings, as well as in gardens and parks.
- Can be used on lawns and structural surfaces (roofs, decks, patios, sidewalks, fences, etc.)
- Kills moss so grass can grow thicker and richer.
- Can be used to spot treat problem areas [in lawns or gardens].
- Will not increase soil acidity.
- Cultural methods such as soil aeration, liming, improving sun exposure, improving drainage, and applying sand to lawns can make conditions less favorable to moss.
- Will not turn moss black.
- Will not blacken moss or darken grass.
- Makes over XX gallons.
- Covers up to XXX sq. ft.
- (Fertilizer code N P K) 0 0 4
- 0 0 4
- Contains 4% potassium, present as potassium salts of fatty acids.
- If the moss is dry, lightly water area to be treated.
- Does not contain ferrous sulfate.
- For household use only.
- Sprayer reaches up to XX feet.
- This product is a fast-acting moss, algae and lichen killer for use on lawns, roofs, patios, fences, bark mulch and driveways. This product will not stain concrete or other surfaces and a single application will control moss and algae for several months to one year.
- What is this product and what will it do:** H₂O₂ Moss Killer Concentrate is a fast-acting moss, algae and lichen killer. On wood, concrete and asphalt a single application will control moss and algae for several months to one year. It does not stain concrete, pavement, stucco or wood.

All text in brackets [xxx] is optional and may or may not be included on the final label.
All text in braces {xxx} is for information purposes and will not appear on the final label.
Revised March 23, 2016

-Where can I use this product? H02 Moss Killer Concentrate can be used on cedar shakes and composition shingles, cedar siding, stucco, brick, stone or concrete walks and driveways and cedar, redwood or CCA treated wood decks and fences. Other sites include lawns, hardened bark of trees, bark mulch, patios, asphalt and gravel.

-Where can I use this product? H02 Moss Killer Concentrate can be used on:

- Lawns, hardened bark of trees, bark mulch, patios, asphalt and gravel
- Cedar shakes and composition shingles
- Cedar siding, stucco, brick or stone
- Concrete walks and driveways
- Cedar, redwood or CCA treated wood decks and fences

-What will I see? Moss will quickly yellow and then turn brown. Unless moss is physically removed it may remain where it died until rain or wind remove it.

-1 ounce = 2 tablespoons = 6 teaspoons

-Ready-To-Spray

-Hose-End Bottle

-Hose-end sprayer

-This product is ready to spray. Just attach this bottle to your garden hose according to directions. Water automatically mixes with the concentrate as you spray.

-Attach to garden hose and spray.

-Moss-Aside™ is a trademark of "W. Neudorff GmbH KG"

-www.neudorff.com



-Made with H02 Moss Killer Concentrate™, a trademark of W. Neudorff GmbH KG

-Contains H02 Moss Killer Concentrate™ Moss Killer, a trademark of W. Neudorff GmbH KG

-(Sold under)(manufactured under) a license of "W. Neudorff GmbH KG, Germany".

-Before...After!

-Designed for GardenPro (Independent) Retailers

-[telephone icon] Questions, Comments [Medical Information] Call X-XXX-XXX-XXXX

[insert company website] [computer icon]

- You may also call toll free 1-877-227-3763 for emergency medical treatment information. {May be use by Neudorff's distributor Bayer Advanced in place of the number given in the First Aid section}

-Dedicated to a Beautiful World

Trusted by generations of homeowners, Scotts is dedicated to helping you enhance and protect the beauty of your home environment.

-Scotts No-Quibble Guarantee


If for any reason you, the consumer, are not satisfied after using this product, you are entitled to get your money back. Simply send us evidence of purchase and we will mail you a refund check promptly.

-

| PRODUCT FACTS | |
|----------------------|--|
| PESTS | This product is effective in controlling (mold), (mildew), (liverworts), (algae), (moss) and |

All text in brackets [xxx] is optional and may or may not be included on the final label.
 All text in braces {xxx} is for information purposes and will not appear on the final label.
 Revised March 23, 2016

| | |
|--|---|
| | (lichens). |
| WHERE TO USE | (Lawns, hardened bark of trees, bark mulch, patios, asphalt and gravel) (Cedar shakes and composition shingles) (Cedar siding, stucco, brick or stone) (Concrete walks and driveways) (Cedar, redwood or CCA-treated wood decks and fences) |
| WHEN TO USE | This product can be used at any time during the year. |
| COVERAGE | Covers up to xxx sq. ft |
| [INSERT BRAND NAME] & YOUR ENVIRONMENT | Your home and yard are places for family and pets to enjoy. That's why [brand name] products are designed with care to provide effective solutions to problems inside and outside your home. |

| | |
|---|---|
|  | Do not allow people (other than applicator) or pets on treatment area during application and until spray has dried. |
|---|---|

]

{Optional warranty statements. Registrant has choice of using any or none}

-NOTICE TO BUYER (WARRANTY)

To the extent consistent with applicable law, Seller warrants that this product conforms to the chemical description on this label and is reasonably fit for purposes stated on this label only when used in accordance with directions under normal use conditions. This warranty does not extend to use of this product contrary to label directions, or under abnormal use conditions, or under conditions not reasonably foreseeable to seller. Buyer assumes all risk of any such use. Seller makes no other warranties, either expressed or implied.

{OR}

-Unconditionally Guaranteed by (company name). **OUR COMMITMENT TO YOUR SATISFACTION:** If you are not happy with the way this product works in your garden, please let us know. We will be happy to replace the product, refund your money, or substitute another (brand name) product. Simply send your name, address and proof of purchase to (Company name & address).]

{OR}

Money Back Guarantee: If you are not satisfied with this product, we will gladly refund your original purchase price.

All text in brackets [xxx] is optional and may or may not be included on the final label.
All text in braces {xxx} is for information purposes and will not appear on the final label.
Revised March 23, 2016

{OR}

The [insert brand name] Promise: Satisfaction guaranteed or your money back! If you apply H02 Moss Killer Concentrate as directed and are not completely satisfied, send proof of purchase from this package and the original cash register receipt to the address below. We will refund the purchase price you paid.

{OR}

[The] [insert company name] Guarantee: If for any reason you are not satisfied with this product, mail us proof of purchase to obtain a full refund of your purchase price.

Registrant: W. Neudorff GmbH KG,
Postfach 1209, An der Mühle 3,
31860 Emmerthal, Germany

All text in brackets [xxx] is optional and may or may not be included on the final label.
All text in braces {xxx} is for information purposes and will not appear on the final label.
Revised March 23, 2016

{SUBLABEL B: Commercial Use}

H02 MOSS KILLER CONCENTRATE

Active Ingredient:

Potassium salts of fatty acids 22.11%

Other Ingredients: 77.89%

Total: 100.00%

KEEP OUT OF REACH OF CHILDREN

WARNING/AVISO

Si usted no entiende la etiqueta busque para que se la explique a usted en detalle. (If you do not understand the label, find someone to explain it to you in detail.)

EPA REG. NO. 67702-12

EPA EST. NO.

NET CONTENTS: 0.5 gallon, 1 gallon, 5 gallons, 20 gallons, 55 gallon, 200 gallons and 211 gallons (800 Liters), 250 gallons

| FIRST AID | |
|--|--|
| IF IN EYES | -Hold eye open and rinse slowly and gently with water for 15-20 minutes. -Remove contact lenses, if present, after the first 5 minutes, then continue rinsing. -Call a poison control center or doctor for treatment advice. |
| IF ON SKIN OR CLOTHING | -Take off contaminated clothing. -Rinse skin immediately with plenty of water for 15-20 minutes. -Call a poison control center or doctor for treatment advice. |
| Have the product container or label with you when calling a poison control center or doctor or going for treatment. [For additional information on this pesticide product, you may call the National Pesticide Information Center at 1-800-858-7378 for emergency medical treatment information [alternatively, supplemental distributors may insert their own toll free numbers and hours of operation.]] | |

PRECAUTIONARY STATEMENTS

HAZARDS TO HUMANS AND DOMESTIC ANIMALS

WARNING: Causes substantial but temporary eye injury. Causes skin irritation. Do not get in eyes, on skin or on clothing.

All text in brackets [xxx] is optional and may or may not be included on the final label.
All text in braces {xxx} is for information purposes and will not appear on the final label.
Revised March 23, 2016

Personal Protective Equipment (PPE) Requirements: Applicators and other handlers must wear: Coveralls over short-sleeved shirt and short pants, chemical-resistant gloves made of any waterproof material, chemical-resistant footwear plus socks, protective eyewear and chemical-resistant headgear for overhead exposure. A chemical-resistant apron must also be worn when cleaning equipment, mixing or loading.

Discard clothing and other absorbent materials that have been drenched or heavily contaminated with this product's concentrate. Do not reuse them. Follow manufacturer's instructions for cleaning/maintaining PPE. If no such instructions for washables, use detergent and hot water. Keep and wash PPE separately from other laundry.

User Safety Recommendations:

Users should: Wash hands before eating, drinking, chewing gum, using tobacco or using the toilet.

Remove clothing immediately if pesticide gets inside. Then wash thoroughly and put on clean clothing.

Remove PPE immediately after handling this product. Wash the outside of gloves before removing. As soon as possible, wash thoroughly and change into clean clothing.

ENVIRONMENTAL HAZARDS

This product may be hazardous to aquatic invertebrates. Do not apply directly to water, or to areas where surface water is present, or to intertidal areas below the mean high water mark. Do not contaminate water when cleaning equipment or disposing of equipment washwaters.

DIRECTIONS FOR USE

It is a violation of Federal Law to use this product in a manner inconsistent with its labeling.

Do not apply this product in a manner that will contact workers or other persons, either directly or through drift. Only protected workers may be in the area during application. For any requirements specific to your State or Tribe, consult the agency responsible for pesticide regulation.

Agricultural Use Requirements

Use this product in accordance with its labeling and with the Worker Protection Standard, 40 CFR part 170. This standard contains requirements for the protection of agricultural workers on farms, forests, nurseries, and greenhouses, and handlers of agricultural pesticides. It contains requirements for training, decontamination, notification, and emergency assistance. It also contains specific instructions and exceptions pertaining to the statements on this label about personal protective equipment (PPE), and restricted-entry interval. The requirements in this box only apply to uses of this product that are covered by the Worker Protection Standard (WPS).

Entry-Restrictions: Do not enter or allow worker entry into treated areas during the restricted-entry interval of 24 hours.

All text in brackets [xxx] is optional and may or may not be included on the final label.
All text in braces {xxx} is for information purposes and will not appear on the final label.
Revised March 23, 2016

PPE required for early-entry to treated areas that is permitted under the Worker Protection Standard and that involves contact with anything that has been treated, such as plants, soil, or water, wear: coveralls over short-sleeved shirt and short pants, chemical-resistant gloves made of any waterproof material, chemical-resistant footwear plus socks, protective eyewear and chemical-resistant headgear for overhead exposure.

Non-Agricultural Use Requirements

The requirements in this box apply to uses of this product that are NOT within the scope of the Worker Protection Standard for agricultural pesticides (40 CFR Part 170). The WPS applies when this product is used to produce agricultural plants on farms, forests, nurseries, or greenhouses.

Keep unprotected persons and domestic animals out of treated areas until sprays have dried.

Read and follow all applicable directions and precautions on this label before using.

PESTS: H02 Moss Killer Concentrate is effective in controlling mosses, algae, lichens, liverworts, mold* and mildew*.

*not including species considered public health pests

SITES: H02 Moss Killer Concentrate may be used in and around nurseries and greenhouses. It may be used on roofs, decks, siding, walkways, fences, growing containers, other structural surfaces, hardened bark of trees, lawns, turf (including golf courses, parks, playgrounds, cemeteries, athletic fields and office and industrial parks), and cultivated areas.

APPLICATION DIRECTIONS

Golf Courses, Parks, Playgrounds, Residential Lawns, Turf, and Cultivated Areas

Dilute concentrate by mixing one part concentrate with 19 parts water (6.8 fl. oz in 1 gallon water). [For thick moss (greater than 1 inch), use up to 50 gallons per 1000 ft²]. Thoroughly soak mosses, algae, lichens, liverworts, mold* and mildew* with solution. Lightly rinse treated areas with water (1 gallon per 1000 ft² or less) 15 to 30 minutes after treatment to avoid grass/turf damage. Test spray a small area prior to using. Do not heavily irrigate for at least 6 hours. Re-apply every 2 weeks or as required. If it rains within one day of treatment, an additional application may be required. Moss will turn brown after a few days. Areas can be re-sown 5 days after treatment.

[Other Sites][Hard surfaces]: Dilute concentrate by mixing one part concentrate with 9 to 15 parts water (put 8 to 13 fl.oz in 1 gallon water). Apply 8 to 12 gallons of solution per 1000 ft². [For thick moss (greater than 1 inch), use 25 gallons of solution per 1000 ft². If moss is dry, thoroughly wet moss with water before treating]. Repeat treatment annually, or when new [mold], [mildew], [moss], [algae], [lichens] or [liverworts] are visible.

All text in brackets [xxx] is optional and may or may not be included on the final label.
All text in braces {xxx} is for information purposes and will not appear on the final label.
Revised March 23, 2016

WHEN TO USE: H02 Moss Killer Concentrate can be used at any time during the year. [Best results are obtained with actively growing moss in the spring or fall. Do not use on lawns (turf) when temperature exceeds 85°F.] During warmer weather apply late in the day. Application during cold weather may delay appearance of [moss], [mold] and [mildew] damage.

METHODS OF APPLICATION: Apply with standard spray equipment. Keep sprayer moving to get an even application. In areas of hard water, use water softeners.

USE PRECAUTIONS

Do not use with spreaders or stickers.

STORAGE AND DISPOSAL

Do not contaminate water, food or feed by storage or disposal.

PESTICIDE STORAGE: Store in a secure place, away from open fire or flame. Keep container closed and reseal after use. Product may be damaged by freezing.

Do not store product below 32°F. If spilled, use absorbent materials and dispose of in an approved manner.

PESTICIDE DISPOSAL: Wastes resulting from the use of this product may be disposed of on site or at an approved waste disposal facility.

CONTAINER HANDLING:

(For non-refillable containers equal to or less than five gallons use these directions:)

Nonrefillable container. Do not reuse or refill this container. Triple rinse container (or equivalent) promptly after emptying. Triple rinse as follows: Empty the remaining contents into application equipment or a mix tank and drain for 10 seconds after the flow begins to drip. Fill the container ¼ full with water and recap. Shake for 10 seconds. Pour rinsate into application equipment or a mix tank or store rinsate for later use or disposal. Drain for 10 seconds after the flow begins to drip. Repeat this procedure two more times. Offer for recycling, if available.

(For non-refillable containers greater than five gallons use these directions:)

Nonrefillable container. Do not reuse or refill this container. Triple rinse container (or equivalent) promptly after emptying. Triple rinse as follows: Empty the remaining contents into application equipment or a mix tank. Fill the container ¼ full with water. Replace and tighten closures. Tip container on its side and roll it back and forth, ensuring at least one complete revolution, for 30 seconds. Stand the container on its end and tip it back and forth several times. Turn the container over onto its other end and tip it back and forth several times. Empty the rinsate into application equipment or a mix tank or store rinsate for later use or disposal. Repeat this procedure two more times. Offer for recycling, if available.

(For refillable containers use these directions :)

Refillable Container. Refill this container with pesticide only. Do not reuse this container for any other purpose. Cleaning the container before final disposal is the responsibility of the person disposing of the container. Cleaning before refilling is the responsibility of the refiller. To clean the container before final disposal, use a sprayer with water or a water hose with an adjustable jet nozzle to completely rinse the interior of the container.

All text in brackets [xxx] is optional and may or may not be included on the final label.
All text in braces {xxx} is for information purposes and will not appear on the final label.
Revised March 23, 2016

A pressure washer with a rinsing nozzle could provide a thorough rinse of the interior. Pour or pump rinsate into the application equipment or rinsate collection system. Repeat this rinsing procedure two more times. If pressure rinsing is not an option, fill the container about 10 percent full with water. Agitate vigorously or re-circulate water with the pump for 2 minutes. Pour or pump rinsate into application equipment or rinsate collection system. Repeat this rinsing procedure two more times. Then offer for recycling if available, or puncture and dispose of in a sanitary landfill, or by incineration, or, if allowed by state and local authorities, by burning. If burned, stay out of smoke.

{Optional marketing claims and product information that may be presented on the container label or supplemental labeling}

[

-Quick Facts

-Read the label first!

-Eliminates unwanted [mold], [liverworts], [mildew], [algae], [moss] and [lichens] quickly

-Kills within hours

-Fast acting

-Kills [mold], [mildew], [liverworts], [algae], [moss] and [lichens] [quickly and effectively]

- [mold], [mildew], [liverwort], [algae], [moss] and [lichen] killer.

- Spray on, [clean off] [kills] [moss], [liverworts], [mold], [mildew], [lichens] & [algae]

- Removal of [moss], [mold], [liverworts], [mildew], [lichens] & [algae] from surfaces

- Controls [moss], [mold], [liverworts], [mildew], [lichens] & [algae] on exterior surfaces

- Cleans surface [moss], [mold], [liverworts], [mildew], [lichens] & [algae]

- [moss], [mold], [liverwort], [mildew], [lichens] & [algae] remover

-Soap for killing moss.

-Kills moss fast.

- Rapid exterior cleaner for decks, patios and exterior home surfaces

- Rapid exterior moss, mold and mildew remover for decks, patios and exterior home surfaces

-Removes green slime.

-Water based.

-Does not contain alcohol.

-Does not contain any metal salts, such as iron or zinc.

-No unpleasant odor.

-Low foaming.

-[Will not][Does not][Won't] stain [concrete], [pavement], [stucco], [bricks], [asphalt] [wood] [or other surfaces].

-Diluted H₂O₂ Moss Killer Concentrate will not damage painted and metal surfaces.

-Will [Does] not darken grass.

-Will [Does] not damage gutters, metal flashing or downspouts.

- H₂O₂ Moss Killer Concentrate can provide long-term control of moss on wooden roofs and structures.

-Controlling moss and algae may add months or years of service to roofs, patios, decks, and such areas.

All text in brackets [xxx] is optional and may or may not be included on the final label.
All text in braces {xxx} is for information purposes and will not appear on the final label.
Revised March 23, 2016

- H02 Moss Killer Concentrate is a fast acting [moss], [liverwort], [mold], [mildew], [lichens] & [algae] killer for use on [lawns], [roofs], [sidewalks], [buildings], [fences], [decks], [patios], [bark mulch], [driveways], and [gravel].
- [Kills][Destroys] moss to prolong life of roofs, decks, patios and walks.
- For use on lawns, patios plus roofs & buildings.
- Use on [roofs], [lawns]
- Higher concentrations of H02 Moss Killer Concentrate (10% and higher) may damage some plants. Rinse off of plants and automobiles that are accidentally sprayed.
- For best results on lawns use the higher spray volumes and thoroughly soak moss.
- Spray treated structures with water 1 week after treatment to remove dead moss and algae.
- For best results, physically remove dead moss one week after treatment.
- Pressure washing is a good method of removing dead moss from roofs.
- When spraying roofs it is best to spray "up-slope" to thoroughly treat the ends of the shingles.
- Freshly treated areas may be slippery. To avoid falling do not walk on freshly treated areas. Rinse treated walkways 1 day after treating to reduce slipperiness.
- In case of overspray onto non-target (desirable) plants, rinse immediately to avoid any possible damage.
- One gallon of concentrate will treat up to XXXX ft² of [lawn][turf][roof or siding].
- Will not harm adjacent plants when used according to directions.
- May be used on moss, algae and lichens on mature, dormant trees, bark mulch, patios, benches, greenhouses, growing containers, gravel and structural surfaces.
- Ideal for use around homes and other buildings, as well as in gardens and parks.
- Can be used on lawns and structural surfaces [roofs, decks, patios, sidewalks, fences, etc.]
- Kills moss so grass can grow thicker and richer.
- Can be used to spot treat problem areas [in lawns or gardens].
- Will not increase soil acidity.
- Cultural methods such as soil aeration, liming, improving sun exposure, improving drainage, and applying sand to lawns can make conditions less favorable to moss.
- Will not turn moss black.
- Will not blacken moss or darken grass.
- Makes over XX gallons.
- Covers up to XXX sq. ft.
- (Fertilizer code N P K) 0 0 4
- 0 0 4
- Contains 4% potassium, present as potassium salts of fatty acids.
- If the moss is dry, lightly water area to be treated.
- Does not contain ferrous sulfate.
- For household use only.
- This product is a fast-acting moss, algae and lichen killer for use on lawns, roofs, patios, fences, bark mulch and driveways. This product will not stain concrete or other surfaces and a single application will control moss and algae for several months to one year.

All text in brackets [xxx] is optional and may or may not be included on the final label.
All text in braces {xxx} is for information purposes and will not appear on the final label.
Revised March 23, 2016

- 1 ounce = 2 tablespoons = 6 teaspoons
- Moss-Aside™ is a trademark of "W. Neudorff GmbH KG"
- www.neudorff.com



- [Made with][contains] H02 Moss Killer Concentrate™, a trademark of W. Neudorff GmbH KG
- [Sold under][manufactured under] a license of "W. Neudorff GmbH KG, Germany
- Before...After!
- [telephone icon] Questions, Comments [Medical Information] Call X-XXX-XXX-XXXX
- [insert company website] [computer icon]
-]

{Optional warranty statements. Registrant has choice of using any or none}

-NOTICE TO BUYER (WARRANTY)

To the extent consistent with applicable law, Seller warrants that this product conforms to the chemical description on this label and is reasonably fit for purposes stated on this label only when used in accordance with directions under normal use conditions. This warranty does not extend to use of this product contrary to label directions, or under abnormal use conditions, or under conditions not reasonably foreseeable to seller. Buyer assumes all risk of any such use. Seller makes no other warranties, either expressed or implied.

{OR}

[The] (insert company name) Guarantee: If for any reason you are not satisfied with this product, mail us proof of purchase to obtain a full refund of your purchase price.]

Registrant: W. Neudorff GmbH KG,
Postfach 1209, An der Mühle 3,
31860 Emmerthal, Germany

All text in brackets [xxx] is optional and may or may not be included on the final label.
All text in braces {xxx} is for information purposes and will not appear on the final label.
Revised March 23, 2016