

67702-8

03/04/2013

1/22



UNITED STATES ENVIRONMENTAL PROTECTION AGENCY  
WASHINGTON, D.C. 20460

OFFICE OF CHEMICAL SAFETY  
AND POLLUTION PREVENTION

W. Neudorff GmbH KG  
c/o Walter G. Talarek PC  
1008 Riva Ridge Drive  
Great Falls, VA 22066-1620

MAR 04 2013

Subject: Label Amendment  
Product Name: H01 Concentrate Herbicidal Soap  
EPA Registration Number: 67702-8  
Application Dated: October 19, 2012  
Decision Number: 466742

Dear Mr. Talarek,

The labeling referred to above, submitted in connection with registration under the Federal Insecticide, Fungicide, and Rodenticide Act (FIFRA), as amended, is acceptable.

Please note that marketing claims made on the pesticide label must be substantiated by data maintained in your files. If data supporting the marketing claims made on the product label is not available, then those claims must be removed.

Should you wish to add/retain a reference to the company's website on your label, then please be aware that the website becomes labeling under the FIFRA and is subject to review by the Agency. If the website is false or misleading, the product would be misbranded and unlawful to sell or distribute under FIFRA §12(a)(1)(E). 40CFR §156.10(a)(5) list examples of statements EPA may consider false or misleading. In addition, regardless of whether a website is referenced on your product's label, claims made on the website may not substantially differ from those claims approved through the registration process. Therefore, should the Agency find or if it is brought to our attention that a website contains false or misleading statements or claims substantially differing from the EPA approved registration, the website will be referred to the EPA's Office of Enforcement and Compliance.

A stamped copy of your label is enclosed for your records. This label supersedes all previously accepted labels. You must submit one (1) copy of the final printed label before you release the product for shipment. Products released for shipment after eighteen (18) months from the date of this letter or the next printing of the label, whichever occurs first, must bear the new revised label. If these conditions are not complied with, the registration will be subject to cancellation in accordance with FIFRA §6(e). Your release for shipment of the product constitutes acceptance of these conditions.

If you have any questions, please contact Emily Hartman of my staff at (703) 347-0189 or [hartman.emily@epa.gov](mailto:hartman.emily@epa.gov).

Sincerely,



Kathryn Montague, Product Manager 23  
Herbicide Branch  
Registration Division (7505P)  
Office of Pesticide Programs

**MASTER LABEL**

**H01 CONCENTRATE HERBICIDAL SOAP**

Active Ingredient:	
Ammoniated soap of fatty acids .....	22%
Other Ingredients: .....	<u>78%</u>
<b>Total:</b>	<b>100%</b>

SUBLABEL A: Home and Garden Use  
 SUBLABEL B: Commercial Agricultural Use

**KEEP OUT OF REACH OF CHILDREN**

**WARNING**

EPA REG. NO. 67702-8

EPA EST.

Registrant: W. Neudorff GmbH KG  
 An der Muhle 3, Postfach 1209  
 D-31860 Emmerthal, Germany

Home and Garden Use: NET CONTENTS: 8 fl. oz., 16 fl. oz., 27 fl. oz, 32 fl. oz., 54 fl. oz, 64 fl. oz.,  
 1 gallon, 130 oz , 55 gallon, 200 gallon, 211 gallon (800 Liters) and 250 gallon

Commercial Agriculture Use: NET CONTENTS: 1 gallon, 2.5 gallon, 5 gallon, 30 gallon, 50 gallon,  
 55 gallon, 200 gallon, 211 gallon (800 Liters) and 250 gallon

67702-8  
 MAR 04 2013  
 67702-8

**SUBLABEL A: Home and Garden Use**

**H01 CONCENTRATE HERBICIDAL SOAP**

Active Ingredient:	
Ammoniated soap of fatty acids .....	22%
Other Ingredients: .....	<u>78%</u>
<b>Total:</b>	<b>100%</b>

**KEEP OUT OF REACH OF CHILDREN**

**WARNING**

EPA REG. NO. 67702-8

EPA EST.

NET CONTENTS: 8 fl. oz., 16 fl. oz., 27 fl. oz, 32 fl. oz., 54 fl. oz, 64 fl. oz., 1 gallon, 130 oz , 55 gallon, 200 gallon, 211 gallon (800 Liters) and 250 gallon

<b>FIRST AID</b>	
IF IN EYES	-Hold eye open and rinse slowly and gently with water for 15-20 minutes. Remove contact lenses, if present, after the first 5 minutes, then continue rinsing eye. -Call a poison control center or doctor for treatment advice
IF ON SKIN OR CLOTHING	-Take off contaminated clothing. -Rinse skin immediately with plenty of water for 15-20 minutes. -Call a poison control center or doctor for treatment advice.
IF SWALLOWED	-Call a poison control center or doctor immediately for treatment advice. -Have person sip a glass of water if able to swallow. -Do not induce vomiting unless told to by a poison control center or doctor. -Do not give anything by mouth to an unconscious person.
IF INHALED	-Move person to fresh air. -If person is not breathing call 911 or an ambulance, then give artificial respiration, preferably mouth-to-mouth, if possible. -Call a poison control center or doctor for further treatment advice.

Have the product container or label with you when calling a poison control center or doctor or going for treatment [For emergency information concerning this product, call the National Pesticide Information Center (NPIC) at 1-800-858-7378 seven days a week., 6:30 am to 4:30 pm Pacific Time (NPIC Web site: www.npic.orst.edu) [alternately insert subregistrants toll free number and hours of operation]. During other times, call the poison control center 1-800-222-1222.]

**PRECAUTIONARY STATEMENTS**

**HAZARDS TO HUMANS AND DOMESTIC ANIMALS**

**WARNING:** Causes substantial but temporary eye injury. Causes skin irritation. Harmful if inhaled. Avoid breathing vapor or spray mist. Do not get in eyes, on skin or on clothing. Wear eye protection (goggles, face shield or safety glasses), long-sleeved shirt, long pants, socks, shoes and rubber gloves. After this product is diluted in accordance with label directions, eye protection, gloves and long sleeves are not required. Wash thoroughly with soap and water after handling. Remove contaminated clothing and wash before reuse.

**ENVIRONMENTAL HAZARDS**

This product may be hazardous to aquatic invertebrates. Do not apply directly to water. To protect the environment, do not allow pesticide to enter or run off into storm drains, drainage ditches, gutters or surface waters. Applying this product in calm weather when rain is not predicted for the next 24 hours will help to ensure that wind or rain does not blow or wash pesticide off the treatment area. Rinsing application equipment over the treated area will help avoid run off to water bodies or drainage systems.

**[Assembly Instructions for Use with Gumby Refill Cartridge:**

1. Before each use check to make sure you are using the correct Gumby product for your (problem)(chore)(application).
2. Shake the (refill)(cartridge)(bottle) vigorously (hard)(well) before each use. For (lengthy)(long)(big) spraying jobs, (re-agitate)(shake) the (refill)(cartridge) (bottle) every (1/2 hour)(1 hour)(2 hours).
3. (Remove)(unscrew) (pop off) (twist off) the cap.
4. (Insert)(lock)(press)(snap)(refill)(cartridge)(bottle)(in place)(to device)(attach)(snap)(twist)(push)(slide)(refill)(cartridge)(bottle) into (sprayer)(multi sprayer)(feeder)(mechanism)(device).
5. To change (refill)(cartridge)(bottle) or when (refill)(cartridge)(bottle) is empty, hold (sprayer)(multi sprayer)(feeder) (mechanism)(device) with one hand and (unscrew) (pop-off) (push button) to release (refill)(cartridge)(bottle) from (sprayer)(multi sprayer)(feeder) (mechanism)(device).

*[Note to reviewer: The assembly instructions will vary depending on the specific design of the applicator. The following alternate assembly instructions may be added to or could replace portions of the basic assembly instruction above to accommodate potential configurations of the device.]*

Attach (refill)(cartridge)(bottle) to (sprayer)(multi sprayer)(feeder) (mechanism)(device)  
 Twist cap to close  
 Align (arrows)(marks) on (refill)(cartridge)(bottle) with arrows on (sprayer)(multi sprayer)(feeder)(mechanism)(device) and ensure (refill)(cartridge)(bottle) is properly inserted.  
 Replace (refill)(cartridge)(bottle) if empty  
 Pull lever back, insert (refill)(cartridge)(bottle), release lever to retain (refill)(cartridge)(bottle)  
 Slide (refill)(cartridge)(bottle) into (chamber)(slot)(orifice). Click in place, close cover.  
 Use only Gumby product (refill)(cartridge)(bottle) with this (sprayer)(multi sprayer)(feeder)(mechanism)(device).  
 Ensure you are using the correct (refill)(cartridge)(bottle) for the job.  
 Double check that you have the correct (refill)(cartridge)(bottle).  
 Press tabs to release (refill)(cartridge)(bottle).  
 Before inserting new (refill)(cartridge)(bottle), wipe seals clean from dirt and debris. After insertion, spray for XXX (minutes)(seconds) to start the flow of product.  
 Attach (refill)(cartridge)(bottle) to (sprayer)(multi sprayer)(feeder)(mechanism) (device). Turn (refill)(cartridge)(bottle) until it clicks into place.  
 Align the corresponding (arrow)(mark) on the (sprayer)(multi sprayer)(feeder) (mechanism)(device) with the corresponding (arrow)(mark) on the (refill) (cartridge) (bottle).  
 The cap (attachment)(feature)(component)(ring) on the (refill)(cartridge)(bottle) is not removable. Do not remove attached cap (attachment)(feature)(component) (ring) to (refill)(cartridge)(bottle). Do not removed insert in (refill) (cartridge)(bottle). Do not remove (black)(red)(other specified color) cap.  
 Only use with specialized (sprayer)(multi sprayer)(feeder)(mechanism)(device).  
 Quick disconnect. Pull back collar to release (refill)(cartridge)(bottle).  
 (Refill)(cartridge)(bottle) reseals itself automatically, no spills, no leaks.  
 Remove cap, align tabs, insert and turn (right)(left) until it stops.  
 Insert (refill)(cartridge)(bottle) into (sprayer)(multi sprayer)(feeder)(mechanism)(device) until you hear a click. (Do not overtighten)  
 Remove overcap, open door on (sprayer)(multi sprayer)(feeder) (mechanism)(device) and insert refill until you hear it click or button pops out.  
 Place hand under the (sprayer)(multi sprayer)(feeder)(mechanism)(device) and press the release button on the side. The (refill)(cartridge)(bottle) will drop from the (sprayer)(multi sprayer)(feeder)(mechanism)(device).]

### **DIRECTIONS FOR USE**

*It is a violation of Federal Law to use this product in a manner inconsistent with its labeling.*

[The registrant may use either Subsection A or Subsection B:

#### **Subsection A: For Control of Weeds, Grass, Moss & Algae**

[DIRECTIONS FOR USE {For 5.3 fl. oz. refill bottle only}]

It is a violation of Federal law to use this product in a manner inconsistent with its labeling.

[This package][H01 Concentrate Herbicidal Soap] is to be used as a refill for H01 RTU Only.

To refill H01 RTU Herbicidal Soap remove existing cap from top of [bottle][trigger]. Fill bottle [with 26.7 fl oz of tap water][to refill line (26.7 fl oz) with tap water]. Place [refill cap][refill cartridge][refill cartridge/cap] on top of bottle and turn clockwise to secure cap and release refill concentrate into bottle. Shake vigorously for 15-30 seconds to mix bottle contents prior to reusing. Remove [Refill cap][Refill Cartridge] and discard. Replace original cap prior to product application.]

### Application Directions

[The registrant may use either of the following application directions sections, either:]

“Shake well before using. Mix one part H01 with 5 parts water (26 oz. in 1 gallon of water). Alternatively, for small, easy-to-kill weeds, mix one part H01 with 9 parts water (14 oz, in 1 gallon water). Apply the mixed solution at 2.5 – 7.5 gallons/1,000 ft<sup>2</sup> (3 – 9 fl. oz/yard<sup>2</sup>). For annual weeds, use at the lower rates. For perennial and more established weeds, use at the higher rate. Any standard hand-held or backpack sprayer can be used. Spray weed thoroughly, using a coarse nozzle setting to reduce drift. Thorough coverage is extremely important. For spot treatment of individual weeds, apply the mixed solution to the center of plant to the point of runoff. Plant damage will be visible from a few hours to 2 days after spraying. Repeat treatment every 2 to 3 weeks to control new weeds growing from seed and re-growth from bi-annual and perennial weeds. Avoid spraying desirable plants. Thoroughly wash equipment after use.”

OR

“Shake well before using. Mix 26 oz. of H01 in 1 gallon of water and spray weeds until runoff. Apply the mixed solution at 2.5 – 7.5 gallons/1,000 ft<sup>2</sup> (3 – 9 fl. oz/yard<sup>2</sup>). Any standard hand-held or backpack sprayer can be used. Spray weeds thoroughly, using a coarse nozzle setting to reduce drift. Thorough coverage is extremely important. For spot treatment of individual weeds, apply the mixed solution to the center of plant to the point of runoff. Plant damage will be visible from a few hours to 2 days after spraying. Repeat treatment every 2 to 3 weeks to control new weeds growing from seed and re-growth from bi-annual and perennial weeds. Avoid spraying desirable plants. Thoroughly wash equipment after use.”

OR [For use with Gumbo sprayer:]

“Apply the contents of this container to XXX square feet.”

### Product Information:

H01 is a fast-acting, non-selective weed, grass, algae and moss killer. This product is not translocated. It will burn only those plant parts that are coated with spray solution. The best

results are obtained with young, actively growing weeds, less than 5 inches high. H01 can be used any time during the year and works best during warm and dry conditions. Application during cold weather may delay appearance of plant damage. If rain falls within 3 hours of treatment, an additional spray may be required. H01 controls many common annual weeds and suppresses the growth of some bi-annual and perennial weeds. It can be used in cultivated areas prior to planting grass, flowers and vegetables. Areas can be re-sown five days after treatment. Inadvertent overspray of H01 does not stain concrete, pavement, stucco or wood.

#### Use Sites:

[The registrant may use either of the following use site descriptions, either:]

“Grapes, small fruits, vines, tomatoes, vegetables (e.g., artichokes, beans, corn, ginseng, herbs, peas, peanuts, potatoes, sugarbeets, sunflowers, sweet potatoes and yams).

Ornamental herbaceous plants, ornamental lawns and turf, ornamental woody shrubs and vines and ornamental shade trees.

Around and on buildings, sidewalks, fences, bark mulch, driveways, patios and gravel.”

OR

“Use on weeds within vegetable and flower gardens, landscaped areas, and lawns. Also use on weeds in the vicinity of small fruits and fruit trees.

Around and on buildings, sidewalks, fences, bark mulch, driveways, patios and gravel.”

#### Pests:

Weeds controlled or suppressed by H01 include the following:

- chickweed *Stellaria media*
- corn spurry *Spergula arvensis*
- dandelion *Taraxacum* spp.
- groundsel *Senecio* spp.
- lamb's-quarters *Chenopodium album*
- mouse-eared chickweed *Cerastium vulgatum*
- mustards *Brassica* spp.
- plantain *Plantago* spp.
- redroot pigweed *Amaranthus retroflexus*
- round leaved mallow *Malva* spp.
- sheep sorrel *Rumex acetosella*
- shepherd's-purse *Capsella bursa-pastoris*



- stinkweed *Thlaspi arvense*
- thistle *Cirsium spp.*
- annual bluegrass *Poa annua*
- large crabgrass *Digitaria sanguinalis*
- perennial ryegrass *Lolium perenne*
- creeping red fescue *Festuca rubra*
- hard fescue *Festuca ovina*
- colonial bentgrass *Agrostis tenuis*
- moss, algae, and lichens"

**[Subsection B: For Control of Moss and Algae:]**

**Application Directions**

Shake well before using.

[For use on products without a hose-end sprayer:]

"Mix one part H01 Concentrate with 19 parts water (6.8 oz. in 1 gallon of water). Apply the mixed solution at 8.3-25 gallons per 1,000 ft<sup>2</sup> (10-30 fl. oz./yard<sup>2</sup>). [Alternately subregistrants may use "Apply the mixed solution at 0.8-2.5 gallons per 100ft<sup>2</sup> (10-30 fl. oz./yard<sup>2</sup>)" ]

[For use on products with a hose-end sprayer:]

"Apply the contents of this container to XXX-XXXX square feet."

For moss thicker than one inch use the higher rate. If moss is dry, thoroughly wet moss with water before treating.

[Optional statement for use on products with a hose-end sprayer:]

"Connect spray nozzle to garden hose. Turn on the water from the faucet. To water dry moss, turn the knob on the front so that the arrow points to the WATER position."

Take care to avoid spray or runoff onto desirable plants to prevent plant damage. If rain falls within one day of treatment, an additional application may be required. Repeat treatment annually or when new moss or algae is visible.

Thoroughly wash equipment after use.

H01 Concentrate can be used any time of the year. The best results are obtained with actively growing moss in the spring or fall. During warmer weather apply late in the day. Application during cold weather may delay appearance of moss damage."

**Use Sites:**

H01 Concentrate may be used to control moss and algae on and around homes and other buildings and home greenhouses. This product can be used on roofs, cedar shakes and composition shingles, cedar siding, stucco, cedar, redwood and CCA-treated wood decks and fences, patios, walks, bricks, stone and concrete walkways, sidewalks and driveways, other structural surfaces, bark mulch, pavement, gravel, patios and asphalt

**Pests:**

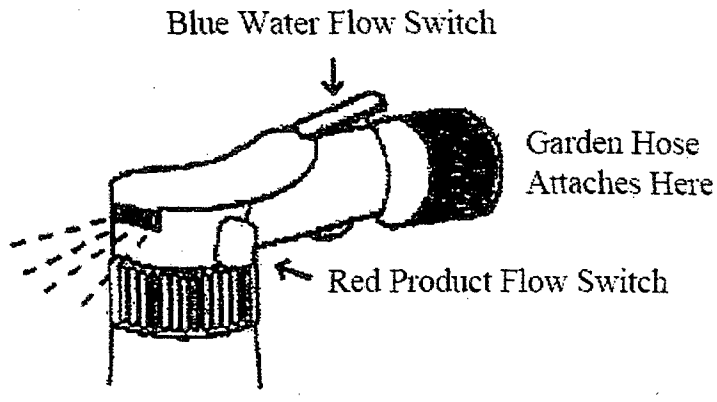
H01 Concentrate is effective in controlling mosses and algae.

H01 Concentrate is a fast-acting moss and algae killer for structural surfaces. Inadvertent overspray does not stain concrete, pavement, stucco or wood. This product is not translocated. It will burn only those plant parts that are coated with spray solution. It can be used on moss and algae on and around buildings, sidewalks, fences, trees, bark mulch, driveways, patios and gravel.

[Distributors may use one of the following optional instructions for hose end sprayers. Distributors must ensure that the hose end sprayer delivers product at a 1:20 dilution rate.]

**How to Use This Sprayer: Shake Container Well Before Getting Started**

1. Before you start, the blue flow switch should be in the 'OFF' position, and the red flow switch should be in the up, 'CLOSED' position.
2. Shake container well and attach it to your garden hose, while holding sprayer at waist level and pointing in a direction away from face and body.
3. Turn on water from the faucet.
4. When you are ready to spray, turn the blue flow switch to 'ON' position; turn red flow switch to the forward, 'OPEN' position, and begin spraying.
5. When you are finished spraying or if you have to stop spraying at any time, turn the blue flow switch back to the 'OFF' position and the red flow switch to the 'CLOSED' position.
6. Turn off the water at the faucet.
7. Remove the container from the garden hose; then rinse thoroughly and store according to storage instructions.

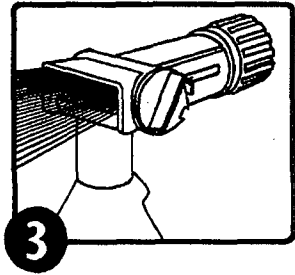
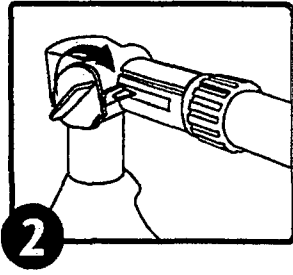
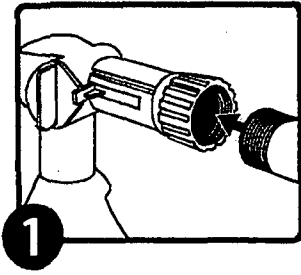


OR

1. Attach garden hose to spray nozzle. Turn on water supply.
2. Bend safety tab down and turn control to "water".
3. Point nozzle toward plants and turn water control knob to "On". Product will automatically mix with water. Spray upper and lower leaf surfaces thoroughly.

To Stop Spraying:

1. When you are finished spraying or if you have to stop spraying at any time, turn the blue knob back to the OFF position.
2. Turn off the water from the faucet.
3. Turn the blue knob to H2O then OFF, to drain the water from the hose.
4. Unscrew spray nozzle from hose. Remove hose end from container.
5. Reseal the container with the child-resistant closure. Rinse the hose-end applicator



OR

To Use This Sprayer

1. Shake container well.
2. Connect spray nozzle to garden hose.

### 3. Turn on the water from the faucet.

When you are ready to spray, turn the knob on the front so that the arrow points to the MIX position. The product will automatically siphon and mix with water.

### 4. When spraying be sure to soak the targeted site thoroughly.

#### To Stop Spraying

1. When you are finished spraying or if you have to stop spraying at any time, turn the knob back to the OFF position.
2. Turn off the water from the faucet.
3. Discharge residual water pressure by turning the knob on the front so that it points to the WATER position.
4. Unscrew spray nozzle from hose.

[Optional diagram may accompany above instructions:]

Error! Reference source not found.

[End Subsection B]

]

#### **STORAGE AND DISPOSAL**

**PESTICIDE STORAGE:** Store unused material, tightly closed, in original container only, away from open flame. Do not store at temperatures below 39°F.

#### **PESTICIDE DISPOSAL:**

**If empty:** Nonrefillable container. Do not reuse or refill this container. Place in trash or offer for recycling if available.

**If partly filled:** Call your local solid waste agency for disposal instructions. Never place unused product down any indoor or outdoor drain.

[The following claims and product information, may or may not be presented on the product's label and labeling:

- The active ingredient in this product is exempted from the requirement of a tolerance for residues in or on all food commodities when used in accordance with good agricultural practice.
- For household use only
- Treated surfaces may be slippery when wet.
- Eliminates unwanted vegetation quickly
- Eliminates unwanted moss and algae quickly
- Won't stain bricks, concrete or asphalt
- Non-staining formula can be used on roofs, walks, decks and patios
- Kills within hours
- See results in hours
- Fast Acting

- Fast Acting Formula
- Kills Weeds, Grass, Algae and Moss
- Kills Moss and Algae
- Kills Moss Quickly (Fast)
- On Roofs, Decks, Patios, Walks, Bricks, and Cement
- Fast Acting Weed, Grass, Moss and Algae Killer.
- Does not contain metal salts, such as iron or zinc.
- Will (Does) not damage gutters, metal flashing or downspouts.
- For best results use prior to establishment of heavy moss infestations.
- Economical Concentrate
- Do not spray on lawns or desirable plants
- www.neudorff.com



- This XXX fl. oz. bottle will cover up to XXX square feet.
- Treats (will treat) up to XXX sq. ft.
- Makes XXX gallons of Finished Spray.
- Kills (Controls) weeds, grass, algae and moss.
- Fast acting weed, grass, algae and moss killer can be used anytime of the year.
- Does not stain concrete or pavement.
- Does not stain concrete, pavement, stucco or wood
- Non-staining formula can be used on roofs, walks, decks and patios.
- Before...After
- An herbicidal soap.
- Made with Finalsan™ herbicidal soap, a trademark of W. Neudorff GmbH KG, Germany.
- Contains Finalsan™ herbicidal soap, a trademark of W. Neudorff GmbH KG, Germany.
- Finalsan™ is a trademark of W. Neudorff GmbH KG, Germany.
- Sold under a license of W. Neudorff GmbH KG, Germany.]
- Manufactured under a license of W. Neudorff GmbH KG, Germany.
- For use) (on)(in)(around)(along): patios, walkways, driveways, flower beds, vegetable gardens, shrubs, trees, fences, foundations, other areas of your yard.
- Kills all types of weeds and grasses
- Visible results in X hours
- Non-staining
- Container treats more than X sq.ft. (weeds)(area)

[Optional statements that may be presented on the container or supplemental wording when product is packaged with a hose end sprayer

- Hose-End Sprayer Directions
- Follow the directions for using the Hose-End sprayer.
- No mixing-no mess!

- Attach to garden hose and spray
- This product is ready to spray. Just attach this bottle to your garden hose according to directions. Water automatically mixes with the concentrate as you spray.
- Hose 'n Go!
- Ready-to-Spray]

Optional Statements for Use on 5.3 fl. oz refill only:

- [Economical [Concentrated] Refill
- [Refills][Refill for] HO1 RTU Herbicidal Soap
- Less Packaging
- Save xx% vs. ready-to-use products
- Good for the environment, less packaging in landfills
- Good Value!

Optional Statements for Use on Gumby cartridge:

- No mixing, no measuring, no waste

[Optional warranty statements. Registrant has choice of using any or none.]

#### **NOTICE (TO BUYER)**

To the extent consistent with applicable law, seller warrants that this product conforms to the chemical description on this label and is reasonably fit for purposes stated on this label only when used in accordance with directions under normal use conditions. This warranty does not extend to use of this product contrary to label directions, or under abnormal use conditions, or under conditions not reasonably foreseeable to seller. Buyer assumes all risk of any such use. To the extent consistent with applicable law, seller makes no other warranties, either expressed or implied.

OR

Buyer assumes all responsibility for safety and use not in accordance with directions.

OR

Seller makes no warranty, expressed or implied, concerning the use of this product other than indicated on the label. To the extent consistent with applicable law, buyer assumes all risk of use and/or handling of this material when such use and/or handling is contrary to label instructions.]

**SUBLABEL B: Commercial Agriculture Use****H01 CONCENTRATE HERBICIDAL SOAP**

## Active Ingredient:

Ammoniated soap of fatty acids .....	22%
Other Ingredients: .....	<u>78%</u>
<b>Total:</b>	<b>100%</b>

**KEEP OUT OF REACH OF CHILDREN****WARNING**

EPA REG. NO. 67702-8

EPA EST.

NET CONTENTS: 1 gallon, 2.5 gallon, 5 gallon, 30 gallon, 50 gallon, 55 gallon, 200 gallon, 211 gallon (800 Liters) and 250 gallon

<b>FIRST AID</b>	
IF IN EYES	-Hold eye open and rinse slowly and gently with water for 15-20 minutes. Remove contact lenses, if present, after the first 5 minutes, then continue rinsing eye. -Call a poison control center or doctor for treatment advice
IF ON SKIN OR CLOTHING	-Take off contaminated clothing. -Rinse skin immediately with plenty of water for 15-20 minutes. -Call a poison control center or doctor for treatment advice.
IF SWALLOWED	-Call a poison control center or doctor immediately for treatment advice. -Have person sip a glass of water if able to swallow. -Do not induce vomiting unless told to by a poison control center or doctor. -Do not give anything by mouth to an unconscious person.
IF INHALED	-Move person to fresh air. -If person is not breathing call 911 or an ambulance, then give artificial respiration, preferably mouth-to-mouth, if possible. -Call a poison control center or doctor for further treatment advice.
Have the product container or label with you when calling a poison control center or doctor or going for treatment. For emergency information concerning this product, call the National Pesticide Information Center (NPIC) at 1-800-858-7378 seven days a week., 6:30 am to 4:30 pm Pacific Time (NPIC Web site: <a href="http://www.npic.orst.edu">www.npic.orst.edu</a> ) [alternately insert subregistrants toll free number and hours of operation]. During other times, call the poison control center 1-800-222-1222.]	

**PRECAUTIONARY STATEMENTS****HAZARDS TO HUMANS AND DOMESTIC ANIMALS**

**WARNING:** Causes substantial but temporary eye injury. Causes skin irritation. Avoid breathing vapor or spray mist. Harmful if inhaled. Do not get in eyes, on skin or on clothing.

**Personal Protective Equipment (PPE) Requirements:** Applicators and other handlers must wear: coveralls worn over short-sleeved shirt and short pants, socks, chemical-resistant footwear, waterproof gloves and protective eyewear. When cleaning equipment a chemical-resistant apron should also be worn.

Follow manufacturer's instructions for cleaning/maintaining PPE. If no such instructions for washables exists, use detergent and hot water. Keep and wash PPE separately from other laundry.

Discard clothing and other absorbent materials that have been drenched or heavily contaminated with this product's concentrate. Do not reuse them.

**User Safety Recommendations**

Remove clothing immediately if pesticide gets inside. Then wash thoroughly and put on clean clothing.

Remove PPE immediately after handling this product. Wash the outside of gloves before removing. As soon as possible, wash thoroughly and change into clean clothing.

**ENVIRONMENTAL HAZARDS**

This product may be hazardous to aquatic invertebrates. Do not apply directly to water, or to areas where surface water is present, or to intertidal areas below the mean high water mark. Do not contaminate water when cleaning equipment or disposing equipment washwaters or rinsate.

**DIRECTIONS FOR USE**

It is a violation of Federal Law to use this product in a manner inconsistent with its labeling.

Do not apply this product in a manner that will contact workers or other persons, either directly or through drift. Only protected workers may be in the area during application. For any requirements specific to your State or Tribe, consult the agency responsible for pesticide regulation.

Read and follow all applicable directions and precautions on this label before using.

**Agricultural Use Requirements**



Use this product in accordance with its labeling and with the Worker Protection Standard, 40 CFR part 170. This standard contains requirements for the protection of agricultural workers on farms, forests, nurseries, and greenhouses, and handlers of agricultural pesticides. It contains requirements for training, decontamination, notification, and emergency assistance. It also contains specific instructions and exceptions pertaining to the statements on this label about personal protective equipment (PPE), restricted-entry interval, and notification to workers. The requirements in this box only apply to uses of this product that are covered by the Worker Protection Standard (WPS).

**Entry-Restrictions:** Do not enter or allow worker entry into treated areas during the restricted-entry interval of 24 hours.

PPE required for early-entry to treated areas that is permitted under the Worker Protection Standard and that involves contact with anything that has been treated, such as plants, soil, or water, wear: coveralls worn over short-sleeved shirts and short pants, socks, chemical-resistant footwear, waterproof gloves and protective eyewear.

#### **Non-Agricultural Use Requirements**

The requirements in this box apply to uses of this product that are NOT within the scope of the Worker Protection Standard for agricultural pesticides (40 CFR Part 170). The WPS applies when this product is used to produce agricultural plants on farms, forests, nurseries, or greenhouses.

Keep unprotected persons out of treated areas until sprays have dried.

For early reentry to treated areas and that involves contact with anything that has been treated such as plants, soil, or water, wear: coveralls, shoes, socks, and waterproof gloves.

#### **Application Directions**

Shake well before using.

[The registrant may use either Subsection A or Subsection B:

#### **Subsection A: For Control of Weeds, Grass, Moss & Algae**

#### **Application Directions**

Shake well before using. Mix one part H01 with 5 parts water (26 oz. in 1 gallon water). Alternatively, for small, easy-to-kill weeds, mix one part H01 with 9 parts water (14 oz. in 1 gallon water). Apply the mixed solution at 75 – 200 gallons/acre (2.0 – 5.0 gallons/1,000 ft<sup>2</sup>). For annual weeds, use at the lower rates. For perennial and more established weeds, use at higher rate. Spray weed thoroughly, using a coarse nozzle setting to reduce drift. Thorough coverage is extremely important. For spot treatment of individual weeds, apply the mixed

solution to the center of plant to the point of runoff. Plant damage will be visible from a few hours to 2 days after spraying. Repeat treatment every 2 to 3 weeks to control new weeds growing from seed and re-growth from bi-annual and perennial weeds. Avoid spraying desirable plants. Thoroughly wash equipment after use.

**Product Information:**

H01 is a fast-acting, non-selective weed, grass, algae and moss killer. This product is not translocated. It will burn only those plant parts that are coated with spray solution. The best results are obtained with young, actively growing weeds, less than 5 inches high. H01 can be used any time during the year and works best during warm and dry conditions. Application during cold weather may delay appearance of plant damage. If rain falls within 3 hours of treatment, an additional spray may be required. H01 controls many common annual weeds and suppresses the growth of some bi-annual and perennial weeds. It can be used in cultivated areas prior to planting grass, flowers and vegetables. Areas can be re-sown five days after treatment. Inadvertent overspray of H01 does not stain concrete, pavement, stucco or wood.

**Use Sites: Outdoors and Greenhouses**

Terrestrial Food and Feed Crops: Grapes, cereal grains, vegetable crops, orchards, fruit and nut trees, vines, field crops (e.g.: artichokes, beans, corn, cotton, ginseng, herbs, hops, peas, peanuts, potatoes, small fruits, sugarbeets, sunflowers, sweet potatoes, tobacco, tomatoes and yams), seedbed or site preparations, cultivated areas prior to the emergence of susceptible plant parts or as a directed spray avoiding desirable plants, fields after the crop has been harvested, and grass or non-grass forage/ fodder/hay.

Terrestrial Non-Food Crops: Ornamental herbaceous plants, ornamental lawns and turf, ornamental woody shrubs, vines, and ornamental shade trees.

Terrestrial Non-Crop Sites: Around and on buildings, sidewalks, fences, trees, bark mulch, driveways and other right-of-ways, patios, gravel, on structures holding flowers, trees, shrubs, vines and vegetables, landscaped areas, lawns, and on and around buildings and structures, such as benches, walls, floors, and roofs.

**Use Methods**

Vegetation Burndown: General control of weeds, grass, algae and moss for site preparation and non-crop areas. Spot treatments may be used in crop and pasture situations. Applications may be made in and around desirable plants when contact of foliage and green bark is avoided.

Directed and Shielded Sprays: Applications may be made around desirable plants when contact of foliage and green bark is avoided.

Prior to Emergence of Plants from Seed, Perennial Rootstocks, and Bulbs: Ensure applications are made before new growth or crop emerges from soil or damage will occur. Areas can be re-sown five days after treatment.

Sucker Control, Pruning and Trimming: To burn back and control epicormic shoots, sucker growth, and other unwanted growth on woody trees, foliage growth on vines, excessive cane growth in brambles, or other listed use sites. Apply only to unwanted vegetative parts. Apply before suckers become woody.

Harvest Aid and Desiccation: To remove leaves of plants prior to harvest and/or burndown of weeds to facilitate harvest. Harvest aid and desiccation uses include applications to root and tuber vegetables, bulb vegetables and cotton only. Applications must be made no later than 24 hours prior to harvest.

Post-Harvest Spray: To control weeds, grass, moss and algae growing in fields after the commodity has been harvested.

Structural and Building Applications: To control weeds, grass, moss and algae in and around buildings and structures such as benches, walls, floors, and roofs.

#### **Pests:**

Weeds controlled or suppressed by H01 include the following:

- chickweed                      *Stellaria media*
- corn spurry                    *Spergula arvensis*
- dandelion                      *Taraxacum* spp.
- groundsel                      *Senecio* spp.
- lamb's-quarters              *Chenopodium album*
- mouse-eared chickweed      *Cerastium vulgatum*
- mustards                      *Brassica* spp.
- plantain                        *Plantago* spp.
- redroot pigweed              *Amaranthus retroflexus*
- round leaved mallow        *Malva* spp.
- sheep sorrel                  *Rumex acetosella*
- shepherd's-purse              *Capsella bursa-pastoris*
- stinkweed                      *Thlaspi arvense*
- thistle                         *Cirsium* spp.
- annual bluegrass              *Poa annua*
- large crabgrass               *Digitaria sanguinalis*
- perennial ryegrass            *Lolium perenne*
- creeping red fescue          *Festuca rubra*
- hard fescue                    *Festuca ovina*

- colonial bentgrass *Agrostis tenuis*
- moss, algae, and lichens"

**[Subsection B: For Control of Moss and Algae:]**

**Application Directions**

Shake well before using. Mix one part H01 Concentrate with 19 parts water (6.8 oz. in 1 gallon of water). Apply the mixed solution at 8.3-25 gallons per 1,000 ft<sup>2</sup>. For moss thicker than one inch use the higher rate. If moss is dry, thoroughly wet moss with water before treating. Take care to avoid spray or runoff onto desirable plants to prevent plant damage. If rain falls within one day of treatment, an additional application may be required. Repeat treatment annually or when new moss or algae is visible.

Thoroughly wash equipment after use.

H01 Concentrate can be used any time of the year. The best results are obtained with actively growing moss in the spring or fall. During warmer weather apply late in the day. Application during cold weather may delay appearance of moss damage.

**Use Sites:**

H01 Concentrate may be used to control moss and algae on and around homes and other buildings and greenhouses. This product can be used on roofs, cedar shakes and composition shingles, cedar siding, stucco, cedar, redwood and CCA-treated wood decks and fences, patios, walks, bricks, stone and concrete walkways, sidewalks and driveways, other structural surfaces, bark mulch, pavement, gravel, patios and asphalt.

**Pests:**

H01 Concentrate is effective in controlling mosses and algae.

H01 Concentrate is a fast-acting moss and algae killer for structural surfaces. Inadvertent overspray does not stain concrete, pavement, stucco or wood. This product is not translocated. It will burn only those plant parts that are coated with spray solution. It can be used on moss and algae on and around buildings, sidewalks, fences, trees, bark mulch, driveways, patios and gravel.

[End Subsection B]

**STORAGE AND DISPOSAL**  
Do not contaminate water, food or feed by storage or disposal.

**PESTICIDE STORAGE:** Store in a secure place, away from open fire or flame. Keep container closed and reseal after use. Product may be damaged by freezing. Do not store product below 39°F. If spilled, use absorbent materials and dispose of in an approved manner.

**PESTICIDE DISPOSAL:** Wastes resulting from the use of this product may be disposed of on site or at an approved waste disposal facility.

**CONTAINER HANDLING:**

*(For containers equal to or less than 5 gallons use these directions on final, printed label):*

Nonrefillable container. Do not reuse or refill this container. Triple rinse container promptly after emptying. Triple rinse as follows: Empty the remaining contents into application equipment or a mix tank and drain for 10 seconds after the flow begins to drip. Fill the container ¼ full with water and recap. Shake for 10 seconds. Pour rinsate into application equipment or a mix tank or store rinsate for later use or disposal. Drain for 10 seconds after the flow begins to drip. Repeat this procedure two more times. Offer for recycling, if available.

*(For containers greater than 5 gallons use these directions on final, printed label):*

Nonrefillable container. Do not reuse or refill this container. Triple rinse container promptly after emptying. Triple rinse as follows: Empty the remaining contents into application equipment or a mix tank. Fill the container ¼ full with water. Replace and tighten closures. Tip container on its side and roll it back and forth, ensuring at least one complete revolution, for 30 seconds. Stand the container on its end and tip it back and forth several times. Turn the container over onto its other end and tip it back and forth several times. Empty the rinsate into application equipment or a mix tank or store rinsate for later use or disposal. Repeat this procedure two more times. Offer for recycling, if available.

[The following claims and product information, may or may not be presented on the product's label and labeling:

- The active ingredient in this product is exempted from the requirement of a tolerance for residues in or on all food commodities when used in accordance with good agricultural practice.
- Eliminates unwanted vegetation quickly
- Eliminates unwanted moss and algae quickly
- Won't stain bricks, concrete or asphalt
- Kills within hours
- Fast Acting
- Kills Weeds, Grass, Algae and Moss
- Kills Moss and Algae
- Kills Moss Quickly (Fast)
- On Roofs, Decks, Patios, Walks, Bricks, and Cement
- Fast Acting Weed, Grass, Moss and Algae Killer.
- Does not contain metal salts, such as iron or zinc.
- Will (Does) not damage gutters, metal flashing or downspouts.
- www.neudorff.com



- This XXX fl. oz. bottle will cover up to XXX square feet.
- Treats (will treat) up to XXX sq. ft.
- Makes XXX gallons of Finished Spray.
- Kills (Controls) weeds, grass, algae and moss.
- Fast acting weed, grass, algae and moss killer can be used anytime of the year.
- Does not stain concrete or pavement.
- A herbicidal soap.
- Made with Finalsan™ herbicidal soap, a trademark of W. Neudorff GmbH KG, Germany.
- Contains Finalsan™ herbicidal soap, a trademark of W. Neudorff GmbH KG, Germany.
- Finalsan™ is a trademark of W. Neudorff GmbH KG, Germany.
- Sold under a license of W. Neudorff GmbH KG, Germany.]
- Manufactured under a license of W. Neudorff GmbH KG, Germany.

[Optional warranty statements. Registrant has choice of using any or none.

#### **NOTICE TO BUYER**

To the extent consistent with applicable law, seller warrants that this product conforms to the chemical description on this label and is reasonably fit for purposes stated on this label only when used in accordance with directions under normal use conditions. This warranty does not extend to use of this product contrary to label directions, or under abnormal use conditions, or under conditions not reasonably foreseeable to seller. Buyer assumes all risk of any such use. Seller makes no other warranties, either expressed or implied.

OR

Buyer assumes all responsibility for safety and use not in accordance with directions.]