



UNITED STATES ENVIRONMENTAL PROTECTION AGENCY  
WASHINGTON, DC 20460

OFFICE OF CHEMICAL SAFETY  
AND POLLUTION PREVENTION

November 21, 2014

Walter Talarek, PC  
W. Neudorff GmbH KG  
c/o Law Office of Walter Talarek, PC  
1008 Riva Ridge Drive  
Great Falls, VA 22066-1620

Subject: Label Amendment – Multiple revisions to label including addition of several pests  
Product Name: NEU1161  
EPA Registration Number: 67702-5  
Application Date: 9/25/14  
Decision Number: 496500

Dear Mr. Talarek:

The amended label referred to above, submitted in connection with registration under the Federal Insecticide, Fungicide and Rodenticide Act, as amended, is acceptable. This approval does not affect any conditions that were previously imposed on this registration. You continue to be subject to existing conditions on your registration and any deadlines connected with them.

A stamped copy of your labeling is enclosed for your records. This labeling supersedes all previously accepted labeling. You must submit one copy of the final printed labeling before you release the product for shipment with the new labeling. In accordance with 40 CFR 152.130(c), you may distribute or sell this product under the previously approved labeling for 18 months from the date of this letter. After 18 months, you may only distribute or sell this product if it bears this new revised labeling or subsequently approved labeling. "To distribute or sell" is defined under FIFRA section 2(gg) and its implementing regulation at 40 CFR 152.3.

Should you wish to add/retain a reference to the company's website on your label, then please be aware that the website becomes labeling under the Federal Insecticide Fungicide and Rodenticide Act and is subject to review by the Agency. If the website is false or misleading, the product would be misbranded and unlawful to sell or distribute under FIFRA section 12(a)(1)(E). 40 CFR 156.10(a)(5) list examples of statements EPA may consider false or misleading. In addition, regardless of whether a website is referenced on your product's label, claims made on the website may not substantially differ from those claims approved through the registration process. Therefore, should the Agency find or if it is brought to our attention that a website contains false or misleading statements or claims substantially differing from the EPA approved registration, the website will be referred to the EPA's Office of Enforcement and Compliance.

Your release for shipment of the product constitutes acceptance of these conditions. If these conditions are not complied with, the registrations will be subject to cancellation in accordance

Page 2 of 2  
EPA Reg. No. 67702-5  
Decision No. 496500

with FIFRA section 6. If you have any questions, you may contact Elizabeth Fertich at 703-347-8560 or via email at Fertich.elizabeth@epa.gov.

Sincerely,

A handwritten signature in black ink, appearing to read 'Kable Bo Davis', enclosed within a hand-drawn oval.

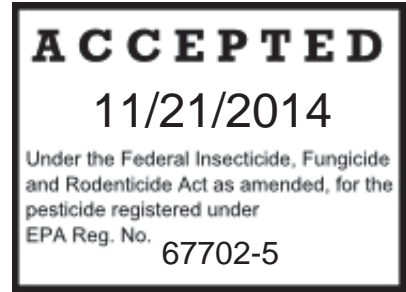
Kable Bo Davis, Product Manager 3  
Invertebrate and Vertebrate Branch 1 (IVB1)  
Registration Division (7505P)  
Office of Pesticide Programs

Enclosure

**MASTER LABEL**

**NEU1161**

Active Ingredients	By Wt.
Pyrethins .....	0.5%
Canola Oil .....	89.5%
Other Ingredients .....	<u>10.0%</u>
Total	100.0%



[The registrant may use one of these statements, either

This product contains 6.875 lbs. of canola oil and 0.038 lbs. of pyrethrins per gallon.

OR

This product contains 0.859 lbs. of canola oil and 0.005 lbs. of pyrethrins per pint.

OR

This product contains 1.718 lbs. of canola oil and 0.01 lbs. of pyrethrins per quart.]

SUBLABEL A: Home and Garden Use and Home Greenhouse Use  
SUBLABEL B: Commercial Agriculture Use

**KEEP OUT OF REACH OF CHILDREN**

**CAUTION**

EPA Reg. No. 67702-5  
Patent No. 5,700,473

EPA Establishment No. 67702-WG-1

Manufactured by: W. Neudorff GmbH KG  
An der Muhle 3, Postfach 1209  
31860 Emmerthal, Germany

Home and Garden Use: Net Contents: 16 fl.oz, 24 fl.oz, 32 fl.oz, 1 gallon (128 fl.oz)

Commercial Agriculture Use: NET CONTENTS: 1 gallon, 5 gallons, 2.5 gallons, 20 gallons, 45 gallons

**SUBLABEL A: Home and Garden Use and Home Greenhouse Use**

**NEU1161**

Active Ingredients	By Wt.
Pyrethins .....	0.5%
Canola Oil .....	89.5%
Other Ingredients .....	<u>10.0%</u>
Total	100.0%

[The registrant may use one of these statements, either

This product contains 6.875 lbs. of canola oil and 0.038 lbs. of pyrethrins per gallon.

OR

This product contains 0.859 lbs. of canola oil and 0.005 lbs. of pyrethrins per pint.

OR

This product contains 1.718 lbs. of canola oil and 0.01 lbs. of pyrethrins per quart.]

**KEEP OUT OF REACH OF CHILDREN**

**CAUTION**

EPA Reg. No. 67702-5  
Patent No. 5,700,473

EPA Establishment No. 67702-WG-1

<b>FIRST AID</b>	
IF ON SKIN OR CLOTHING	<ul style="list-style-type: none"><li>• Take off contaminated clothing.</li><li>• Rinse skin immediately with plenty of water for 15-20 minutes.</li><li>• Call a poison control center or doctor for treatment advice.</li></ul>
Have the product container or label with you when calling a poison control center or doctor or going for treatment. [For emergency information concerning this product, call the poison control center 1-800-222-1222. [Alternately insert subregistrant's toll free number and hours of operation].]	

NET CONTENTS: 16 fl.oz., 24 fl.oz., 32 fl.oz., 1 gallon

#### **PRECAUTIONARY STATEMENTS**

**Hazards to Humans and Domestic Animals:** CAUTION. Harmful if swallowed or absorbed through the skin. Avoid contact with skin, eyes, or clothing. Wash hands thoroughly with soap and water after handling and before eating, drinking, chewing gum, using tobacco, or using the toilet.

#### **User Safety Recommendations**

- Users should wash hands with plenty of soap and water before eating, drinking, chewing gum, using tobacco, or using the toilet.
- Users should remove clothing immediately if pesticide gets inside, then wash thoroughly and put on clean clothing.

**Environmental Hazards:** This product is toxic to aquatic organisms including fish and invertebrates. To protect the environment, do not allow pesticide to enter or run off into storm drains, drainage ditches, gutters or surface waters. Applying this product in calm weather when rain is not predicted for the next 24 hours will help to ensure that wind or rain does not blow or wash pesticide off the treatment area. Rinsing application equipment over the treated area will help avoid runoff to water bodies or drainage systems.

This product is highly toxic to bees exposed to direct treatment on blooming crops or weeds. Do not apply this product or allow it to drift to blooming crops or weeds while bees are actively visiting the treatment area.

#### **DIRECTIONS FOR USE**

It is a violation of Federal law to use this product in a manner inconsistent with its labeling.

**Only for use in home gardens and home greenhouses.**

#### **USE RESTRICTIONS**

- Do not wet plants to point of runoff or drip.
- Do not allow adults, children, or pets to enter the treated area until sprays have dried.
- Do not apply this product in a way that will contact adults, children, or pets, either directly or through drift.
- Remove pets, birds, and cover fish aquariums before spraying.
- Do not apply within 21 days of a sulfur application.
- Do not use NEU1161 spray when temperatures are above 90°F.
- Do not apply directly to or near water, storm drains, or drainage ditches. Do not apply when windy. To prevent product run-off, do not over water the treated area(s) or apply when heavy rain is expected. Rinse applicator over lawn or garden area only.
- Do not apply more than 10 times per season.
- Do not reapply within 3 days except under extreme pest pressure.
- In case of extreme pest pressure do not reapply within 24 hours.
- Not for use in outdoors residential misting systems.
- Do not make applications during rain
- Do not water the treated area to the point of run-off.

**Phytotoxicity Note:** Oil removes the glaucous (blue) bloom from such evergreens as Colorado blue spruce and Koster spruce. Use a 1% solution on oil sensitive plants such as Chamaecyparis, Cryptomeria, Japanese Holly, Red Cedar, and Smoke Tree. Use care on blooms and buds. Test spray a portion of the plant and wait several days to determine if burn occurs before spraying larger areas. Some plants are sensitive to this product. If in doubt, test-spray a small portion of the plant and wait several days to determine if burn occurs before spraying larger areas.

Read entire label before use. Use only as directed. Shake well before each use. Thoroughly wet all parts of the plants. Repeat treatment in 1-2 weeks if necessary. May be used on edible fruits and vegetables up to and including day of harvest.

## APPLICATION DIRECTIONS

[The registrant may use one of these application directions, either

### INSTRUCTIONS FOR MIXING

For a 1% solution mix 2 teaspoons of concentrate with 1 quart (32 fl. oz) water, or 1 fl. oz. concentrate with 3 quarts (96 fl. oz.) water. For a 2% solution mix 4 teaspoons of concentrate with 1 quart (32 fl. oz) water, or 2 fl. oz. concentrate with 3 quarts (96 fl. oz.) water. Shake well before each use and stir or shake diluted spray frequently during use.

OR

### Hose-End Sprayer Directions

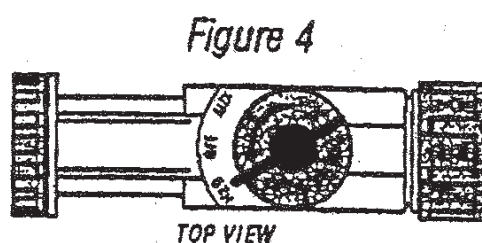
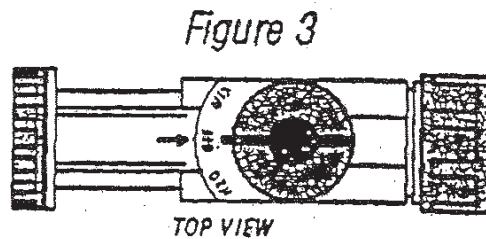
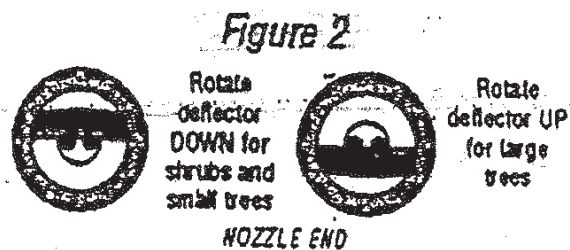
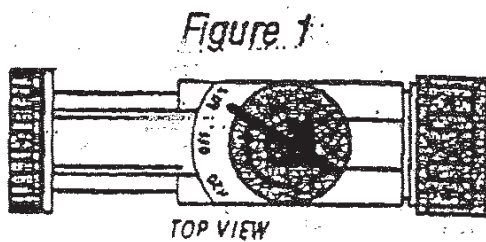
Follow the directions for using the Hose-End sprayer.

#### How to use hose-end sprayer:

1. Connect spray nozzle to garden hose.
2. Turn on the water from the faucet.
3. When you are ready to spray, turn the blue knob on top so that it points to the MIX position on the spray head. (Fig. 1)
4. The spray deflector on the front of the hose-end applicator can be rotated to give a stream or fan spray. (Fig. 2)

#### To stop spraying:

1. When you are finished spraying or if you have to stop spraying at any time, turn the blue knob back to the OFF position. (Fig. 3)
  2. Turn off the water from the faucet.
  3. Turn the blue knob to H<sub>2</sub>O then OFF, to drain the water from the hose. (Fig. 4)
  4. Unscrew spray nozzle from hose. Remove hose-end from container.]
- [Optional Figure:



OR

## HOSE END SPRAYER INSTRUCTIONS

Shake before using.

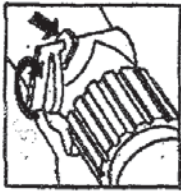
### HOW TO USE:



1. Attach garden hose to spray nozzle.
2. Turn on water supply.



4. Point nozzle toward plants and turn water control knob to "On". Product will automatically mix with water. Spray upper and lower leaf surfaces thoroughly.



3. Bend safety tab down and turn control to "water".

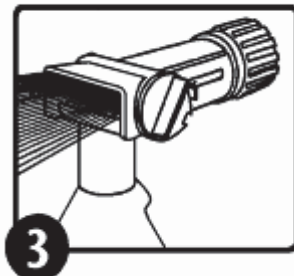
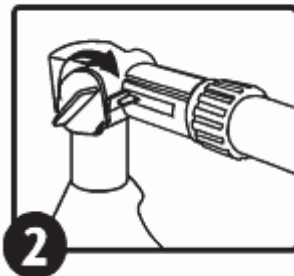
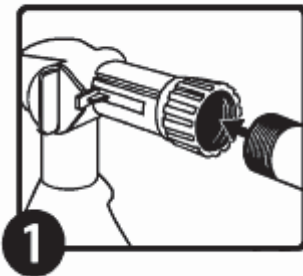


OR:

1. Attach garden hose to spray nozzle. Turn on water supply.
2. Bend safety tab down and turn control to "water".
3. Point nozzle toward plants and turn water control knob to "On". Product will automatically mix with water. Spray upper and lower leaf surfaces thoroughly.

To Stop Spraying:

1. When you are finished spraying or if you have to stop spraying at any time, turn the blue knob back to the OFF position.
2. Turn off the water from the faucet.
3. Turn the blue knob to H<sub>2</sub>O then OFF, to drain the water from the hose.
4. Unscrew spray nozzle from hose. Remove hose end from container.



]

## **STORAGE AND DISPOSAL**

**PESTICIDE STORAGE:** Keep this product in its tightly closed original container when not in use. Store in a cool, dry, well-ventilated (preferably locked) area that is inaccessible to children and animals.

### **PESTICIDE DISPOSAL AND CONTAINER HANDLING:**

Nonrefillable. Do not reuse or refill this container.

**If empty:** Place in trash or offer for recycling if available.

**If partly filled:** Call your local solid waste agency for disposal instructions. Never place unused product down any indoor or outdoor drain.

BATCH CODE

## **PESTS/SITES AND APPLICATION INSTRUCTIONS**

NEU1161 will kill: Adelgids, Ants (including Foraging Ants, Sweet-Feeding Ants, Pavement Ants, Moisture Ants, Little Black Ants, Argentine Ants, Crazy Ants, Acrobat Ants, Bigheaded Ants, Cornfield Ants, Ghost Ants, Odorous House Ants, Thief Ants, Texas Leafcutting Ants, Field Ants, and other Common Ants) (except Fire Ants, Harvester Ants, Carpenter Ants, and Pharaoh Ants), Aphids (including Green Peach Aphids), Armyworms (including Beet Army Worms, Western Yellow Striped Armyworms), Bagworms, Beetles (Colorado potato beetle, flea beetle, Japanese beetle, asparagus beetle, Blister Beetles, 12-spotted Cucumber Beetles, Cucumber Beetle, Darkling Beetles (lesser mealworm), Saw-toothed Grain Beetles, Elm Leaf Beetles, Bean Beetles, Mexican Bean Beetles), Borers (including European Corn Borer, Branch and Twig Borers, Shot hole borers and Pacific flathead borers), Box Elder Bugs, Cabbageworms (including Cross-striped Cabbageworm and Imported Cabbageworm), Cankerworms, Caterpillars (Gypsy Moth Caterpillars, Tent Caterpillar, Eastern Tent Caterpillar, Forest Tent Caterpillar and Tomato Fruitworm Caterpillar), Corn Earworms, Crane Flies, Crickets, Diamondback Moth Larvae, Earwigs, Fireworms, Fungus Gnats, Fruit Flies (Including Cherry Fruit Fly), Glassy Winged Sharpshooter, Grape Leaf Skeletonizer, Grasshoppers, Green Fruit Worm, Harlequin Bugs, Hornworms (including Tomato Hornworm), Katydid, Lace Bugs, Leafhoppers (including Grape Leafhopper, and Potato Leafhoppers), Leafminers, Leafrollers (including Fruittree Leafrollers), Leaf-tiers, Loopers (including Cabbage Looper), Lygus, Maggots (including Apple Maggot, Cabbage Maggots, and Onion Maggot), Mealybugs (including Citrus Mealybugs, Grape Mealybugs and Vine Mealybugs), Non-biting Midges, Millipedes, Mites (including Clover Mites, European Red Mite and Spider Mites), Moths (including Artichoke Plume Moth, Codling Moth, Diamondback Moth, European Pine Tip Moth, Gypsy Moths, Indian Meal Moth, Mediterranean Flour Moth), Mushroom Flies, Navel Orangeworm, Plant Bugs (including Leaf footed Plant Bug, Tarnished Plant Bug), Psyllids (including Pear Psyllids), Sawfly Larvae (pear and rose slugs), Scale insects (including Soft Scale and Armoured Scale), Silverfish, Skippers, Sowbugs, Spittlebugs, Squash Bugs, Stink Bugs, Thrips (including Greenhouse Thrips), Vinegar Flies, Webworms, Weevils (including Boll Weevil, Carrot Weevil, Clover Weevil, Rice Weevil, Pepper Weevil), Whitefly and Phylloxera.

Apply at a rate of 1% or 2% solution. For soft-bodied pests such as aphids and mites, a 1% solution is sufficient. Using hand-held trigger sprayers, hand sprayers, or backpack sprayers, thoroughly spray insect pests with diluted product until plants are wet. Do not wet plants to point of runoff or drip. Repeat treatment in 1-2 weeks if needed.

## **HOME GARDEN USE**

For use outdoors on fruit and nut trees (apples, cherries, peaches, pears, nuts); flowering, foliage plants; corn; melons; tomatoes; vegetables (beans, cabbage, cucurbits, peas, potatoes); figs; small fruits (grapes, strawberry, raspberry); citrus; ornamental and shade trees (birch, evergreens, holly, oak) and herbs. Do not apply more than 4 fl. oz. of concentrate (400 fl. oz. of 1% solution or 200 fl. oz. of 2% solution) per 1000 square feet.



## **DIRECTIONS FOR GREENHOUSE USE**

For use in home greenhouses on flowering, foliage plants; melons; tomatoes; vegetables (beans, cabbage, cucurbits, peas, potatoes); small fruits (grapes, strawberry, raspberry). Do not apply more than 4 fl. oz. of concentrate (400 fl.oz. of 1% solution or 200 fl.oz. of 2% solution) per 1000 square feet.

## **INDOOR USE**

For use indoors on houseplants.

## **DORMANT USE**

Kills egg stages of pests present in dormant season and pests on dormant shrubs (e.g., roses), evergreens, fruit trees and shade trees. Apply a 2% solution. Thoroughly wet the dormant plants or trees. Do not apply more than 4 fl. oz of concentrate (400 fl. oz. of 1% solution or 200 fl. oz. of 2% solution) per 1000 square feet.

[Marketing claims and product information that may or may not be presented on the container or label:

- Dormant and growing season insect spray
- (Kills)(Controls) (Use to kill) [Insert any or all of the following:] (Adelgids), (Ants (including Foraging Ants, Sweet-Feeding Ants, Pavement Ants, Moisture Ants, Little Black Ants, Argentine Ants, Crazy Ants, Acrobat Ants, Bigheaded Ants, Cornfield Ants, Ghost Ants, Odorous House Ants, Thief Ants, Texas Leafcutting Ants, Field Ants, and other Common Ants) (except Fire Ants, Harvester Ants, Carpenter Ants, and Pharaoh Ants)), (Aphids), (Green Peach Aphids), (Armyworms), (Beet Army Worms), (Western Yellow Striped Armyworms), (Bagworms), (Beetles), (Colorado Potato Beetle), (Flea beetle), (Japanese Beetle), (Asparagus Beetle), (Blister Beetles), (12-spotted Cucumber Beetles), (Cucumber Beetle), (Darkling Beetles), (Saw-toothed Grain Beetles), (Elm Leaf Beetles), (Bean Beetles), (Mexican Bean Beetles), (Borers),(European Corn Borer), (Branch and Twig Borers), (Shot hole borers), (Pacific flathead borers), (Box Elder Bugs), (Cabbageworms), (Cross-striped Cabbageworm), (Imported Cabbageworm), (Cankerworms), (Caterpillars), (Gypsy Moth Caterpillars), (Tent Caterpillar), (Eastern Tent Caterpillar), (Forest Tent Caterpillar), (Tomato Fruitworm Caterpillar), (Corn Earworms), (Crane Flies), (Crickets), (Diamondback Moth Larvae), (Earwigs), (Fireworms), (Fungus Gnats), (Fruit Flies), (Cherry Fruit Fly), (Glassy Winged Sharpshooter), (Grape Leaf Skeletonizer), (Grasshoppers), (Green Fruit Worm), (Harlequin Bugs), (Hornworms), (Tomato Hornworm), (Katydids), (Lace Bugs), (Leafhoppers), (Grape Leafhopper), (Potato Leafhoppers), (Leafminers), (Leafrollers), (Fruittree Leafrollers), (Leaftiers), (Loopers), (Cabbage Looper), (Lygus), (Maggots) (Apple Maggot), (Cabbage Maggots), (Onion Maggots), (Mealybugs), (Citrus Mealybugs), (Grape Mealybugs), (Vine Mealybugs), (Non-Biting Midges), (Millipedes), (Mites), (Clover Mites), (European Red Mite), (Spider Mites), (Moths), (Artichoke Plume Moth), (Codling Moth), (Diamondback Moth), (European Pine Tip Moth), (Gypsy Moths), (Indian Meal Moth), (Mediterranean Flour Moth), (Mushroom Flies), (Navel Orangeworm), (Plant Bugs), (Leaf footed Plant Bug), (Tarnished Plant Bug), (Psyllids), (Pear Psyllids), (Sawfly Larvae (pear and rose slugs)), (Scale) (Soft Scale), (Armoured Scale), (Silverfish), (Skippers), (Sowbugs), (Spittlebugs), (Squash Bugs), (Stink Bugs), (Thrips), (Greenhouse Thrips), (Vinegar Flies), (Webworms), (Weevils), (Boll Weevil), (Carrot Weevil), (Clover Weevil), (Rice Weevil), (Pepper Weevil), (Whitefly), (Phylloxera) (and other listed insect pests).
- (Kills)(Controls)(Use to kill) (adelgids), (Ants (except Fire Ants, Harvester Ants, Carpenter Ants, and Pharaoh Ants)), (Aphids ),( Armyworms), (Bagworms), (Beetles), (Borers), (Cabbage Looper), (Cabbageworms), (Cankerworms), (Caterpillars), (Crane Flies), (Crickets), (Diamondback Moth Larvae), (Earwigs), (Fireworms), (Fungus Gnats), (Fruit Flies), (Glassy Winged Sharpshooter), (Grape Leaf Skeletonizer), (Green Fruit Worm), (Harlequin Bug), (Hornworms), (Katydids), (Lace Bugs), (Leafhoppers), (Leafminers), (Leaftiers), (Loopers), (Leafrollers), (Lygus), (Maggots),(mealybugs), (Non-Biting Midges), (Millipedes), (Mites),

(Moths ), (Mushroom Flies), (Navel Orangeworm), (Phylloxera), (Psyllid), (Scale), (Vinegar Flies), (Webworms), (Weevils), (Whiteflies) , (Phylloxera) (and other listed insect pests).

- For indoor and outdoor use
- (Controls)(Kills) 100+ (listed) (insects) (on contact)
- (Multi-Action:) Kills all stages of listed insects, including eggs.
- Kills listed insects on contact
- Indoor and Outdoor
- Patent #5,700,473
- Kills all accessible stages of listed insects, including eggs.
- Contact insecticide, ovicide.
- Fast acting - kills on contact
- Contains pyrethrins and canola oil botanical insecticides.
- Easy to use
- Insecticide/miticide
- NEU1161 is a contact killer for listed insect and mite pests.
- For best results, pests must be contacted directly with spray.
- Pyrol™ is a trademark of W. Neudorff GmbH KG
- Made with Pyrol™ Insecticide, a trademark of W. Neudorff GmbH KG
- Contains Pyrol™ Insecticide, a trademark of W. Neudorff GmbH KG



- May be used up to day of harvest
- May be used on edible fruits and vegetables up to and including day of harvest
- Can be used right up until day of harvest.
- Read entire container label before using this product
- Roses and flowers
- Gardens
- Fruits and vegetables
- Can be used in vegetable gardens
- [For 16. fl. oz container] Makes over 12 gallons of spray
- [For 24 fl. oz. container] Makes over 18 gallons of spray
- [For 32 fl. oz container] Makes up to 25 gallons of spray
- [For 1 gallon container] Makes up to 100 gallons of spray]
- See [Attached] booklet for [Precautionary Statements] and [directions for use]

[The registrant may use one of these optional statements:

**“NOTICE TO BUYER**

To the extent consistent with applicable law, seller warrants that this product conforms to the chemical description on this label and is reasonably fit for purposes stated in the Directions for Use, subject to the inherent risks described above, when used in accordance with Directions for Use under normal conditions. To the extent consistent with applicable law, this warranty does not extend to use of this product contrary to label directions, or under abnormal use conditions, or under conditions not reasonably foreseeable to Seller. To the extent consistent with applicable law, the Seller shall not be liable for any such use. To the extent consistent with applicable law, the Seller makes no other warranties, either expressed or implied.”

OR

Satisfaction guaranteed

OR

Unconditionally guaranteed

OR

Money back guarantee]

Manufactured by: W. Neudorff GmbH KG  
An der Muhle 3, Postfach 1209  
31860 Emmerthal, Germany

**SUBLABEL B: Commercial Agriculture Use**

**NEU1161**

Active Ingredients	By Wt.
Pyrethrins .....	0.5%
Canola Oil .....	89.5%
Other Ingredients .....	<u>10.0%</u>
Total	100.0%

[The registrant may use one of these statements, either

This product contains 6.875 lbs. of canola oil and 0.038 lbs. of pyrethrins per gallon.

OR

This product contains 0.859 lbs. of canola oil and 0.005 lbs. of pyrethrins per pint.

OR

This product contains 1.718 lbs. of canola oil and 0.01 lbs. of pyrethrins per quart.]

**KEEP OUT OF REACH OF CHILDREN**

**CAUTION**

EPA Reg. No. 67702-5  
Patent No. 5,700,473

EPA Establishment No. 67702-WG-1

<b>FIRST AID</b>	
IF ON SKIN OR CLOTHING	<ul style="list-style-type: none"><li>• Take off contaminated clothing.</li><li>• Rinse skin immediately with plenty of water for 15-20 minutes.</li><li>• Call a poison control center or doctor for treatment advice.</li></ul>
Have the product container or label with you when calling a poison control center or doctor or going for treatment. [For emergency information concerning this product, call the poison control center 1-800-222-1222. [Alternately insert subregistrant's toll free number and hours of operation].]	

NET CONTENTS: 1 gallon, 5 gallons, 20 gallons, 45 gallons

## PRECAUTIONARY STATEMENTS

**Hazards to Humans and Domestic Animals:** CAUTION. Harmful if swallowed or absorbed through the skin. Avoid contact with skin, eyes, or clothing. Wash hands thoroughly with soap and water after handling and before eating, drinking, chewing gum, using tobacco, or using the toilet.

**Personal Protective Equipment (PPE) Requirements:** Mixers, loaders, applicators, and other handlers must wear the following: long-sleeved shirt and long pants; shoes plus socks; and waterproof gloves.

**User Safety Requirements:** Follow manufacturer's instructions for maintaining PPE. If no such instructions for washables exist, use detergent and hot water. Keep and wash PPE separately from other laundry. Discard clothing and other absorbent material that have been drenched or heavily contaminated with the product's concentrate. Do not reuse them.

Do not apply directly into sewers or drains, or to any area like a gutter where drainage to storm sewers, water bodies, or aquatic habitat can occur. Do not allow the product to enter any drain during or after application.

### User Safety Recommendations

- Users should wash hands before eating, drinking, chewing gum, using tobacco, or using the toilet.
- Users should remove clothing immediately if pesticide gets inside, then wash thoroughly and put on clean clothing.
- Users should remove PPE immediately after handling this product. Wash the outside of gloves before removing. As soon as possible, wash thoroughly and change into clean clothing.

**Environmental Hazards:** This product is toxic to aquatic organisms including fish and invertebrates. Drift and runoff may be hazardous to aquatic organisms in water adjacent to treated areas. This product may contaminate water through runoff. This product has a potential for runoff for several weeks after application. Poorly draining soils and soils with shallow water tables are more prone to produce runoff that contains this product.

This product is highly toxic to bees exposed to direct treatment on blooming crops or weeds. Do not apply this product or allow it to drift to blooming crops or weeds while bees are actively visiting the treatment area.

Do not apply directly to water or to areas where surface water is present or to intertidal areas below the mean high water mark. Do not contaminate water when cleaning equipment or disposing of equipment washwaters. Observe the most restrictive of the labeling limitations and the precautions of all products used in mixtures.

[For container sizes of 5 gallons or more, add the following statement:

Do not discharge effluent containing this product into lakes, streams, ponds, estuaries, oceans, or other water unless in accordance with the requirements of a National Pollutant Discharge Elimination System (NPDES) permit and the permitting authority has been notified in writing prior to discharge. Do not discharge effluent containing this product to sewer systems without previously notifying the local sewage treatment plant authority. ]

For guidance, contact your State Water Board or Regional Office of the EPA. Observe the most restrictive of the labeling limitations and precautions of all products used in mixtures.

## DIRECTIONS FOR USE

It is a violation of Federal law to use this product in a manner inconsistent with its labeling.

## USE RESTRICTIONS

- Do not wet plants to point of runoff or drip.
- Do not apply more than 10 times per season.

- Do not reapply within 3 days except under extreme pest pressure.
- In case of extreme pest pressure, do not reapply within 24 hours.
- Do not harvest until spray has dried.
- Do not apply to cotton within 14 days of seed harvest.
- Do not apply this product in a way that will contact workers or other persons, either directly or through drift. Only protected handlers may be in the area during application.
- Do not apply within 21 days of a sulfur application.
- Do not use NEU1161 spray when temperatures are above 90°F.
- Do not make applications during rain
- Do not apply this product in a way that will contact adults, children, or pets, either directly or through drift. Remove pets and birds and cover fish aquariums before spraying.
- Do not water the treated area to the point of runoff.

**Spray Drift Management for Agriculture Crops:** Avoiding spray drift at the application site is the responsibility of the applicator and the grower. The interactions of many equipment (boom sprayer, pressurized handheld/backpack sprayer, airblast sprayer, insectigation) and weather-related factors determine the potential for spray drift. The applicator and the grower are responsible for considering all these factors when making decisions. Do not apply at wind speeds greater than 10 mph at the application site. Do not make any type of application into temperature inversions. Apply as a medium or coarser spray (ASABE standard 572). Do not release spray at a height greater than 4 feet above the ground or crop canopy.

**Phytotoxicity:** Oil removes the glaucous (blue) bloom from such evergreens as Colorado blue spruce and Koster spruce. Use a 1% solution on oil sensitive plants such as: Chamaecyparis, Cryptomeria, Japanese Holly, Red Cedar and Smoke Tree. Use care on blooms and buds. If concerned about sensitivity of plants, test spray a portion of the plant and wait several days to determine if burn occurs before spraying larger areas.

**Read entire label.** Use only as directed. Mix well before each use. Thoroughly wet all parts of the plants. Repeat treatment in 1 - 2 weeks if necessary. May be used on edible crops up to and including day of harvest.

#### **AGRICULTURAL USE REQUIREMENTS**

Use this product only in accordance with its labeling and with the Worker Protection Standard, 40 CFR part 170. This standard contains requirements for the protection of agricultural workers on farms, forests, nurseries, and greenhouses, and handlers of agricultural pesticides. It contains requirements for training, decontamination, notification, and emergency assistance. It also contains specific instructions and exceptions pertaining to the statements on this label about personal protective equipment (PPE), restricted-entry interval, and notification to workers. The requirements of this box apply to uses of this product that are covered by the Worker Protection Standard (WPS).

Do not enter or allow worker entry into treated areas during the restricted-entry interval (REI) of 12 hours.

PPE required for early reentry into treated areas that is permitted under the Worker Protection Standard and that involves contact with anything that has been treated, such as plants, soil or water is: coveralls; shoes plus socks; and chemical resistant gloves made of any waterproof material.

#### **NON-AGRICULTURAL USE REQUIREMENTS**

The requirements in this box apply to uses of this product that are not within the scope of the Worker Protection Standard for agricultural pesticides (40 CFR Part 170). The WPS applies when this product is used to produce agricultural plants on farms, forests, nurseries, or greenhouses.

Do not enter or allow others to enter until sprays have dried.

## **TANK MIXING**

Read and follow all applicable directions and precautions on the label of other products, before mixing with NEU1161.

NEU1161 can be applied up to day of harvest. When tank mixed with products, do not apply that product closer to the harvest than is permitted or stated on the other product's label.

Pour NEU1161 into spray tank at least half filled with water using adequate agitation. When mixed with other products proven or known to be compatible, wettable powders should be added first, followed by flowable concentrates, then NEU1161 and other emulsifiable concentrates.

NEU1161 can be mixed with spinosad (Entrust™, Conserve™ or SpinTor), *Bacillus thuringiensis* (Deliver®, Agree® WG, Javelin® WG, XenTari® DF, Foray® XG, Foray® 76B, Foray® 48B or Biobit® XL), *Bacillus subtilis* (Serenade® ASO or Serenade® Max), *Bacillus pumilis* (Sonata®) for use on the crops listed on this label, in accordance with the most restrictive of label limitations and precautions. No label dosage rates may be exceeded. This product cannot be mixed with any product containing a label prohibition against such mixing.

For foliage application the spray tank must be free of any sulfur residue before using this material. Do not combine sulfur sprays with this material on foliage during spring and summer months. Do not apply within 21 days of a sulfur application. If in doubt, spray a portion of one tree previously treated with sulfur and wait several days to determine if burn occurs.

When used in combination with or immediately before or after spraying, this product may increase the phytotoxicity of fungicides such as Captan, or copper compounds. If in doubt, treat a small area with a combination spray and wait several days to determine if burn occurs.

## **MIXING**

For 2% solution, mix 2 parts concentrate with 98 parts water. For 1% solution, mix 1 part concentrate with 99 parts water. For soft-bodied pests such as aphids and mites, use 1% solution. Shake well before each use and stir or shake diluted spray frequently during use.

1. Add sufficient water to the mixing tank to allow proper agitation by pump or paddles.
2. Continue stirring while adding first the NEU1161 then the remaining water.
3. Continue to stir throughout use.
4. If using equipment without pump or paddle, shake often during use.
5. Flush fluid in sprayer hose lines back into the tank if the solution has remained unstirred for more than 20 minutes.

## **PESTS**

NEU1161 RTU will kill: Adelgids, Ants (including Foraging Ants, Sweet-Feeding Ants, Pavement Ants, Moisture Ants, Little Black Ants, Argentine Ants, Crazy Ants, Acrobat Ants, Bigheaded Ants, Cornfield Ants, Ghost Ants, Odorous House Ants, Thief Ants, Texas Leafcutting Ants, Field Ants, and other Common Ants) (except Fire Ants, Harvester Ants, Carpenter Ants, and Pharaoh Ants), Aphids (including Green Peach Aphids), Armyworms (including Beet Army Worms, Western Yellow Striped Armyworms), Bagworms, Beetles (Colorado potato beetle, flea beetle, Japanese beetle, asparagus beetle, Blister Beetles, 12-spotted Cucumber Beetles, Cucumber Beetle, Darkling Beetles (lesser mealworm), Saw-toothed Grain Beetles, Elm Leaf Beetles, Bean Beetles, Mexican Bean Beetles), Borers (including European Corn Borer, Branch and Twig Borers, Shot hole borers and Pacific flathead borers), Box Elder Bugs, Cabbageworms (including Cross-striped Cabbageworm and Imported Cabbageworm), Cankerworms, Caterpillars (Gypsy Moth Caterpillars, Tent Caterpillar, Eastern Tent Caterpillar, Forest Tent Caterpillar and Tomato Fruitworm Caterpillar), Corn Earworms, Crane Flies, Crickets, Diamondback Moth Larvae, Earwigs, Fireworms, Fungus Gnats, Fruit Flies (Including Cherry Fruit Fly), Glassy Winged Sharpshooter, Grape Leaf Skeletonizer, Grasshoppers, Green Fruit Worm, Harlequin Bugs, Hornworms (including Tomato Hornworm), Katydid, Lace Bugs, Leafhoppers (including Grape

Leafhopper, and Potato Leafhoppers), Leafminers, Leafrollers (including Fruittree Leafrollers), Leaf tiers, Loopers (including Cabbage Looper), Lygus, Maggots (including Apple Maggot, Cabbage Maggots, and Onion Maggot), Mealybugs (including Citrus Mealybugs, Grape Mealybugs and Vine Mealybugs), Non-Biting Midges Millipedes, Mites, (including Clover Mites, European Red Mite and Spider Mites), Moths (including Artichoke Plume Moth, Codling Moth, Diamondback Moth, European Pine Tip Moth, Gypsy Moths, Indian Meal Moth, Mediterranean Flour Moth), Mushroom Flies, Navel Orangeworm, , Plant Bugs (including Leaf footed Plant Bug, Tarnished Plant Bug), Psyllids (including Pear Psyllids), Sawfly Larvae (pear and rose slugs), Scale insects (including Soft Scale and Armoured Scale), Silverfish, Skippers, Sowbugs, Spittlebugs, Squash Bugs, Stink Bugs, Thrips (including Greenhouse Thrips), Vinegar Flies, Webworms, Weevils (including Boll Weevil, Carrot Weevil, Clover Weevil, Rice Weevil, Pepper Weevil), Whitefly and Phylloxera.

## USE SITES AND APPLICATION INSTRUCTIONS

### OUTDOOR USE

Repeat in 7 to 14 days, as needed, up to three applications per growing season. Apply 2% diluted product except for soft-bodied pests such as aphids and mites. For these pests a 1% dilution rate is sufficient. Mix well before each use. Apply at a rate of 65 gal/acre of 2% dilution and 65-130 gal/acre of 1% dilution. Do not apply more than 1.3 gallons of concentrate per acre per application.

Crop	Application Rate of Diluted Concentrate
Fruit trees such as: apples, apricots, cherries, nectarines, peaches, pears, plums, prunes	Dormant, pre-bloom and summer use 1%: 65-130 gallons/acre 2%: 65 gallons/acre
Flowering, foliage and bedding plants - greenhouse and outdoors	1%: 65-130 gallons/acre 2%: 65 gallons/acre
Sugar beets	1%: 65-130 gallons/acre 2%: 65 gallons/acre
Cotton	When insects appear- repeat weekly as needed 1%: 65-130 gallons/acre 2%: 65 gallons/acre
Soybeans, melons, tomatoes, vegetables such as: asparagus, beans, beets, broccoli, Brussels sprouts, cabbage, cauliflower, celery, collards, cucurbits, eggplant, kale, lettuce, lima beans, mustard greens, peas, potatoes, peppers, radishes, spinach, squash, turnips.	Summer use 1%: 65-130 gallons/acre 2%: 65 gallons/acre
Small fruits such as: grapes, strawberry, blueberry, raspberry, cranberry, blackberry.	Dormant and summer use 1%: 65-130 gallons/acre 2%: 65 gallons/acre
Nut crops: almonds, filberts, macadamias, pecans, pistachios, walnuts	Dormant, pre-bloom and summer use 1%: 65-130 gallons/acre 2%: 65 gallons/acre
Citrus	Post-bloom, summer or fall 1%: 65-130 gallons/acre 2%: 65 gallons/acre
Herbs and spices such as: anise (aniseed), basil, caraway, chicory, chives, coriander, cumin, dill, fennel (Italian and sweet), marjoram, sweet oregano, mint, nasturtium, paprika, parsley, rosemary, sage, savory, tarragon and thyme.	When insects appear, repeat weekly as needed. 1%: 65-130 gallons/acre 2%: 65 gallons/acre



Ornamental and shade trees, flower and foliage plants, birch, flowering cherry, dogwood, evergreens, hawthorn, holly, magnolia, maple, oak, flowering peach, privet, pyracantha, sycamores	Dormant, pre-bloom and summer use 1%: 65-130 gallons/acre 2%: 65 gallons/acre
--	---

**GREENHOUSE USE**

Repeat in 7 to 14 days, as needed, up to three applications per growing season. Apply 2% diluted product, except for on soft-bodied pests such as aphids and mites. For these pests use a 1% dilution rate. Mix well before each use. Apply at a rate of 0.20 fl. oz./square foot of 2% dilution and 0.20-0.40 fl. oz./square foot of 1% dilution. Do not apply more than 0.004 fl. oz. of concentrate per square foot per application.

<b>Crop</b>	<b>Application Rate of Diluted Concentrate</b>
Flowering, foliage and bedding plants	1%: 0.20-0.40 fl. oz./square foot 2%: 0.20 fl.oz./square foot
Soybeans, melons, tomatoes, vegetables: asparagus, beans, beets, broccoli, Brussels sprouts, cabbage, cauliflower, celery, collards, cucurbits, eggplant, kale, lettuce, lima beans, mustard greens, peas, potatoes, peppers, radishes, spinach, squash, turnips.	Summer use 1%: 0.20-0.40 fl. oz./square foot 2%: 0.20 fl.oz./square foot
Small fruits such as: grapes, strawberry, blueberry, raspberry, cranberry, blackberry.	Dormant and summer use 1%: 0.20-0.40 fl. oz./square foot 2%: 0.20 fl.oz./square foot
Herbs and spices such as: anise (aniseed), basil, caraway, chicory, chives, coriander, cumin, dill, fennel (Italian and sweet), marjoram, sweet oregano, mint, nasturtium, paprika, parsley, rosemary, sage, savory, tarragon and thyme.	When insects appear, repeat weekly as needed. 1%: 0.20-0.40 fl. oz./square foot 2%: 0.20 fl.oz./square foot

**DORMANT USE**

Kills egg stages of pests present in dormant season and scale insects, mites, and mealybugs on dormant shrubs, evergreens, woody plants, fruit trees, and shade trees.

Apply 2% solution at a rate of 65 gal of diluted solution/acre. Do not apply more than 1.3 gallons of concentrate per acre per application.

**CHEMIGATION**

Do not apply this product through any type of irrigation system.

**STORAGE AND DISPOSAL**

Do not contaminate water, food, or feed by storage and disposal.

**PESTICIDE STORAGE:** Keep this product in its tightly closed original container when not in use. Store in a cool, dry, well-ventilated (preferably locked) area that is inaccessible to children and animals.

**PESTICIDE DISPOSAL:** Wastes resulting from the use of this product may be disposed of on site or at an approved waste disposal facility.

**CONTAINER HANDLING:**

Nonrefillable container. Do not reuse or refill this container. Triple rinse container (or equivalent) promptly after emptying.

Triple rinse as follows (For containers equal to or less than 5 gallons (18.9 L): Empty the remaining contents into application equipment or a mix tank and drain for 10 seconds after the flow begins to drip. Fill the container ¼ full with diluent and recap. Shake for 10 seconds. Pour rinsate into application equipment or a mix tank or store rinsate for later use or disposal. Drain for 10 seconds after the flow begins to drip. Repeat this procedure two more times. Offer for recycling if available, for reconditioning if appropriate, or puncture and dispose of in a sanitary landfill, or by other procedures approved by state and local authorities.

Triple rinse as follows (For containers greater than 5 gallons (18.9 L): Empty the remaining contents into application equipment or a mix tank. Fill the container ¼ full with diluent. Replace and tighten closures. Tip container on its side and roll it back and forth, ensuring at least one complete revolution, for 30 seconds. Stand the container on its end and tip it back and forth several times. Turn the container over onto its other end and tip it back and forth several times. Empty the rinsate into application equipment or a mix tank or store rinsate for later use or disposal. Repeat this procedure two more times. Offer for recycling if available, for reconditioning if appropriate, or puncture and dispose of in a sanitary landfill, or by other procedures approved by state and local authorities.

#### BATCH CODE

[Marketing claims and product information that may or may not be presented on the container or supplemental labeling:

- Dormant and growing season insect spray
- (Kills)(Controls) (Use to kill) [Insert any or all of the following:] (Adelgids), (Ants (including Foraging Ants, Sweet-Feeding Ants, Pavement Ants, Moisture Ants, Little Black Ants, Argentine Ants, Crazy Ants, Acrobat Ants, Bigheaded Ants, Cornfield Ants, Ghost Ants, Odorous House Ants, Thief Ants, Texas Leafcutting Ants, Field Ants, and other Common Ants) (except Fire Ants, Harvester Ants, Carpenter Ants, and Pharaoh Ants)), (Aphids), (Green Peach Aphids), (Armyworms), (Beet Army Worms), (Western Yellow Striped Armyworms), (Bagworms), (Beetles), (Colorado Potato Beetle), (Flea beetle), (Japanese Beetle), (Asparagus Beetle), (Blister Beetles), (12-spotted Cucumber Beetles), (Cucumber Beetle), (Darkling Beetles), (Saw-toothed Grain Beetles), (Elm Leaf Beetles), (Bean Beetles), (Mexican Bean Beetles), (Borers),(European Corn Borer), (Branch and Twig Borers), (Shot hole borers), (Pacific flathead borers), (Box Elder Bugs), (Cabbageworms), (Cross-striped Cabbageworm), (Imported Cabbageworm), (Cankerworms), (Caterpillars), (Gypsy Moth Caterpillars), (Tent Caterpillar), (Eastern Tent Caterpillar), (Forest Tent Caterpillar), (Tomato Fruitworm Caterpillar), (Corn Earworms), (Crane Flies), (Crickets), (Diamondback Moth Larvae), (Earwigs), (Fireworms), (Fungus Gnats), (Fruit Flies), (Cherry Fruit Fly), (Glassy Winged Sharpshooter), (Grape Leaf Skeletonizer), (Grasshoppers), (Green Fruit Worm), (Harlequin Bugs), (Hornworms), (Tomato Hornworm), (Katydid), (Lace Bugs), (Leafhoppers), (Grape Leafhopper), (Potato Leafhoppers), (Leafminers), (Leafrollers), (Fruittree Leafrollers), (Leaftiers), (Loopers), (Cabbage Looper), (Lygus), (Maggots) (Apple Maggot), (Cabbage Maggots), (Onion Maggots), (Mealybugs), (Citrus Mealybugs), (Grape Mealybugs), (Vine Mealybugs), (Non-Biting Midges), (Millipedes), (Mites), (Clover Mites), (European Red Mite), (Spider Mites), (Moths), (Artichoke Plume Moth), (Codling Moth), (Diamondback Moth), (European Pine Tip Moth), (Gypsy Moths), (Indian Meal Moth), (Mediterranean Flour Moth), (Mushroom Flies), (Navel Orangeworm), (Plant Bugs), (Leaf footed Plant Bug), (Tarnished Plant Bug), (Psyllids), (Pear Psyllids), (Sawfly Larvae (pear and rose slugs)), (Scale) (Soft Scale), (Armoured Scale), (Silverfish), (Skippers), (Sowbugs), (Spittlebugs), (Squash Bugs), (Stink Bugs), (Thrips), (Greenhouse Thrips), (Vinegar Flies), (Webworms), (Weevils), (Boll Weevil), (Carrot Weevil), (Clover Weevil), (Rice Weevil), (Pepper Weevil), (Whitefly), (Phylloxera) (and other listed insect pests).
- (Kills)(Controls)(Use to kill) (adelgids), (Ants (except Fire Ants, Harvester Ants, Carpenter Ants, and Pharaoh Ants)), (Aphids ),( Armyworms), (Bagworms), (Beetles), (Borers),

(Cabbage Looper), (Cabbageworms), (Cankerworms), (Caterpillars), (Crane Flies), (Crickets), (Diamondback Moth Larvae), (Earwigs), (Fireworms), (Fungus Gnats), (Fruit Flies), (Glassy Winged Sharpshooter), (Grape Leaf Skeletonizer), (Green Fruit Worm), (Harlequin Bug), (Hornworms), (Katydids), (Lace Bugs), (Leafhoppers), (Leafminers), (Leaftiers), (Loopers), (Leafrollers), (Lygus), (Maggots),(mealybugs), (Non-Biting Midges), (Millipedes), (Mites), (Moths ), (Mushroom Flies), (Navel Orangeworm), (Phylloxera), (Psyllid), (Scale), (Vinegar Flies), (Webworms), (Weevils), (Whiteflies) , (Phylloxera) (and other listed insect pests).

- For indoor and outdoor use
- (Controls)(Kills) 100+ (listed) (insects) (on contact)
- (Multi-Action:) Kills all stages of listed insects, including eggs.
- Kills listed insects on contact
- Indoor and Outdoor
- Patent #5,700,473
- Kills all accessible stages of insects, including eggs.
- Contact insecticide, ovicide.
- Fast acting – kills on contact.
- Contains pyrethrins and canola oil botanical insecticides.
- Easy to use
- Insecticide/miticide
- NEU1161 is a contact killer for listed insect and mite pests.
- For best results, pests must be contacted directly with spray.
- Pyrol™ is a trademark of W. Neudorff GmbH KG
- Made with Pyrol™ Insecticide, a trademark of W. Neudorff GmbH KG
- Contains Pyrol™ Insecticide, a trademark of W. Neudorff GmbH KG



- May be used up to day of harvest
- May be used on edible crops up to and including day of harvest
- Can be used right up until day of harvest.
- Read Entire Container Label Before Using This Product

[The registrant may use one of these optional statements.

#### **NOTICE TO BUYER**

To the extent consistent with applicable law, seller warrants that this product conforms to the chemical description on this label and is reasonably fit for purposes stated in the Directions for Use, subject to the inherent risks described above, when used in accordance with Directions for Use under normal use conditions. To the extent consistent with applicable law, this warranty does not extend to use of this product contrary to label directions, or under abnormal use conditions, or under conditions not reasonably foreseeable to Seller. To the extent consistent with applicable law, the Seller shall not be liable for any such use. To the extent consistent with applicable law, the Seller makes no other warranties, either expressed or implied.”

OR

Satisfaction guaranteed

OR

Unconditionally guaranteed

OR

Money back guarantee]

Manufactured by: W. Neudorff GmbH KG

An der Mühle 3, Postfach 1209  
31860 Emmerthal, Germany