



UNITED STATES ENVIRONMENTAL PROTECTION AGENCY
WASHINGTON, DC 20460

OFFICE OF CHEMICAL SAFETY
AND POLLUTION PREVENTION

November 15, 2018

Tony Herber
Agent
The Clorox Company
c/o PS&RC; P.O. Box 493
Pleasanton, CA 94566-0803

Subject: Notification per PRN 98-10 – To update label language
Product Name: Shield
EPA Registration Number: 67619-17
Application Date: October 11, 2018
Decision Number: 545444

Dear Mr. Herber:

The Agency is in receipt of your Application for Pesticide Notification under Pesticide Registration Notice (PRN) 98-10 for the above referenced product. The Antimicrobials Division (AD) has conducted a review of this request for its applicability under PRN 98-10 and finds that the action requested falls within the scope of PRN 98-10.

The label submitted with the application has been stamped “Notification” and will be placed in our records.

Should you wish to add/retain a reference to the company’s website on your label, then please be aware that the website becomes labeling under the Federal Insecticide Fungicide and Rodenticide Act and is subject to review by the Agency. If the website is false or misleading, the product would be misbranded and unlawful to sell or distribute under FIFRA section 12(a)(1)(E). 40 CFR 156.10(a)(5) list examples of statements EPA may consider false or misleading. In addition, regardless of whether a website is referenced on your product’s label, claims made on the website may not substantially differ from those claims approved through the registration process. Therefore, should the Agency find or if it is brought to our attention that a website contains false or misleading statements or claims substantially differing from the EPA approved registration, the website will be referred to the EPA’s Office of Enforcement and Compliance.

If you have any questions, you may contact Emilia Oiguenblik by phone at 703-347-0199, or via email at Oiguenblik.emilia@epa.gov or Demson Fuller at (703) 308-8062 or by email at fuller.demson@epa.gov

Sincerely,

A handwritten signature in blue ink that reads "Wanda J. H. for".

Demson Fuller, Product Manager 32
Regulatory Management Branch I
Antimicrobials Division (7510P)
Office of Pesticide Programs

Label identification

Shield, EPA Reg. No. 67619-17

R0711142

12:40 10/4/18

NOTIFICATION

67619-17

The applicant has certified that no changes, other than those reported to the Agency have been made to the labeling. The Agency acknowledges this notification by letter dated:

11/15/2018

Formatting notes (applicable for all claims)

Now[!] -and/or- **New[ly][!]** -and/or- **Improved[!]** may be added anywhere to a claim and will only be used for the first 6 months of product on shelf

Optional text may be placed anywhere on the label -and/or- container.

Bold, italicized text is information for the reader and is not part of the label.

Bracketed information is optional text.

All footnotes are on the last page, unless they are part of EPA's mandated text.

The word "and" may be substituted with "&". Plural words may be used in their singular form or singular words may be used in their plural form unless otherwise specified in 40 CFR.

All directions may be written in numbered form or in paragraph form.

All use surfaces and/or use sites on the label may be listed in conjunction with an image of the use surface and/or use site.

Highlighted text is new. Strike-through text means removed.

Shield



KEEP OUT OF REACH OF CHILDREN

WARNING:

EYE AND SKIN IRRITANT.

For Spray Product: USE ONLY IN WELL-VENTILATED AREAS.

See back label for additional precautionary statements.

[NET] [CONTENTS] _____

Active Ingredient:

Sodium Hypochlorite 1.84%

Other Ingredients: 98.16%

Total: 100.00%

[(Yields 1.75% available chlorine)]
(17,480 PPM (Parts Per Million) Available Chlorine)

Contains no phosphorus

PRECAUTIONARY STATEMENTS: Hazards to Humans & Domestic Animals

WARNING: EYE AND SKIN IRRITANT. Causes substantial but temporary eye injury. Do not get in eyes or on clothing. Avoid contact with skin. Wear protective eyewear [such as goggles or safety glasses]. Wash thoroughly with soap and water after handling and before eating, drinking, chewing gum, or using tobacco. Remove and wash contaminated clothing before reuse. Harmful if swallowed. For sensitive skin or prolonged use, wear gloves. Vapors may irritate. Avoid prolonged breathing of vapors. Use only in well ventilated areas. **[Not recommended for use by persons with heart conditions or chronic respiratory problems such as asthma, emphysema or obstructive lung disease.]**
(this statement will appear in color)

FIRST AID:

IF IN EYES: Hold eye open and rinse slowly and gently with water for 15-20 minutes. Remove contact lenses, if present, after the first 5 minutes, then continue rinsing eye. Call a poison control center or doctor for treatment advice. **IF ON SKIN OR CLOTHING:** Take off contaminated clothing. Rinse skin immediately with plenty of water for 15-20 minutes. Call a poison control center or doctor for treatment advice. **IF BREATHING IS AFFECTED:** Move person to fresh air. If person is not breathing, call 911 or an ambulance, then give artificial respiration, preferably mouth-to-mouth if possible. **IF SWALLOWED:** Call a poison control center or doctor immediately for treatment advice. Have person sip a glassful of water if able to swallow. Do not induce vomiting unless told to do so by a poison control center or doctor. Do not give anything by mouth to an unconscious person. Call a poison control center or doctor for further treatment advice. Have the product container or label with you when calling a poison control center or doctor or going for treatment.

PHYSICAL AND CHEMICAL HAZARDS: This product contains bleach. Do not use or mix this product with other [household] chemicals such as ammonia, toilet bowl cleaners, rust removers, or acid, as this releases hazardous gases.

Professional/Institutional uses (32 fl oz RTU Spray)
(Refillable bottles intended to be refilled by the consumer)

STORAGE AND DISPOSAL:

Store this product in a cool [dry] area, [away from direct sunlight and heat] to avoid deterioration. Do not reuse or refill except as described in the directions for use. Refill only with this product. [Please] recycle empty container or discard in trash.

Professional/Institutional uses (32 fl oz RTU Spray)
(Bottles not intended to be refilled by the consumer)

STORAGE AND DISPOSAL:

Store this product in a cool [dry] area, [away from direct sunlight and heat] to avoid deterioration. Nonrefillable container. Do not reuse or refill container. [Please] recycle empty container or discard in trash.

Professional/Institutional uses (64 fl oz, 128 fl oz Direct application/dilutable non-spray)
(Nonrefillable bottles)

STORAGE AND DISPOSAL:

Store this product in a cool [dry] area, [away from direct sunlight and heat] to avoid deterioration. In case of spill, flood areas with large quantities of water. Product or rinsates that cannot be used should be diluted with water before disposal in a sanitary sewer. Nonrefillable container. Do not reuse empty container. [Triple rinse promptly, then] [please] recycle empty container or discard in trash.

Clorox Customer Assistance 1-888-797-7225. Any Questions? The experts at Clorox are standing by to answer any of your questions. -or- Questions or Comments? Call [toll-free] 1-888-797-7225. Satisfaction Guaranteed[!] At Clorox we have prided ourselves in making consistent quality products **insert years**, and we are dedicated to ensuring your total satisfaction with our product. If you are not completely satisfied, please call the number below -or- 1-888-797-7225. Visit us at -or- For [M]SDS information please go to www.cloroxprofessional.com -or- cloroxpro.com

For more [product -and/or- ingredient] information, visit IngredientsInside.com -or- **insert website(s)**.

For a Spanish translation of product directions -or- instructions -or- information, visit **insert website.**

Commercial Solutions -and/or- CloroxPro™ -or- ® is -or- are a registered trademark of The Clorox Company -or- Clorox Professional Products Company

Clorox [and Clean-Up] is a -or- are registered trademark{s} of The Clorox Company

Mfd. for & © YYYY The Clorox Company, 1221 Broadway, Oakland, CA 94612

Made in [the] U.S.A. [of global components -and/or- ingredients.]

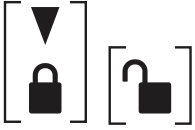
EPA Reg. No. 67619-17

EPA Est. No. 5813-CA-3 (A8 or H8), GA-1 (A4), CA-6 (TPP), GA-2 (VG), IL-2 (VF); 71681-IL-1 (03), IL-2 (24)

Beginning of batch code indicates Est. No.

Patents: www.thecloroxcompany.com/patents

Packaging Related Statements and Icons



**Padlock icon unlocked and locked (on bottle shrink)
with corresponding arrow (molded into trigger)**

Peel -or- Pull back] [here] [for] [additional] [instructions -or- directions] [for use]

Operating Trigger

To Operate: Open hinged cover of sprayer and snap into opening on top. -or- Turn -or- Rotate nozzle [counterclockwise] to “spray” -or- “stream” -or- ON [setting]. -or- Adjust [nozzle] to desired pattern.

- When almost empty, -or- To spray every drop[,] [:] tilt bottle downward -or- at a downward angle [while spraying].
- [To foam (close screen on nozzle) or spray (open screen on nozzle)].

[Refill only with this product]

Alternate for Refill Bottle:

To Refill [Spray Bottles]:

[Remove] 1. Remove trigger sprayer -or- cap [from empty bottle]

[Pour] 2. Unscrew cap on refill and pour contents directly into empty bottle.

[Use] 3. Replace trigger sprayer [and use as you normally would]. [Fill -or- refill the *insert number* [fl] oz *this product* spray bottle with *this product* refill. Pour product into spray bottle over sink or tub basin.]

-or-

[Remove trigger sprayer from empty bottle,] unscrew cap and transfer your trigger to this bottle.

To refill: Turn trigger on spray bottle [1/4 turn] counterclockwise [and pull upwards] to remove. [After refilling spray bottle,] Replace trigger by aligning [red tip] tube on trigger with [opening] [tube] inside bottle [while pushing down] [-and/or- push [sprayer] [straight] down [until it clicks] [-and/or- locks into place]].

-or-

To Refill: [Remove:] Remove cap from empty bottle. **[Pour:]** Unscrew cap on refill and pour contents directly into empty bottle. Use a funnel to minimize product spills -or- waste. **[Use:]** Replace cap and use as you normally would.

Trigger options: To refill: Twist trigger [on spray bottle] [1/4 turn] [counterclockwise] [and pull up -or- upward[s]] to remove. [Fill spray bottle with refill solution.] [After refilling spray bottle,] [to replace trigger,] Align [red tip] tube on trigger [head] over [small] opening -or- tube [on] [the] inside [of the bottle]. [[Note that] trigger [head] should point in [the] same direction as [the] tube [running] on the outer edge of the bottle.] Press [straight] down on the trigger [head], [applying even pressure] [until it clicks -and/or- locks] [into place].

- When almost empty, -or- To spray every drop[,] [:] tilt bottle downward -or- at a downward angle [while spraying].
- [To foam (close screen on nozzle) or spray (open screen on nozzle)].

-or-

• To Foam -or- To Spray: Turn -or- Rotate nozzle to ON.

-or-

• [[Easy] Refill [Instructions on [the] Back]]

• Twist off, Refill. Align Tip to Tube. Push, Snap to Close.

TO REFILL SPRAY BOTTLE:

Twist trigger on spray bottle counterclockwise and pull upward to remove. Refill spray bottle. To replace trigger, align red tipped tube on trigger over tube opening inside of the bottle. Press straight down on the trigger until it clicks into place.

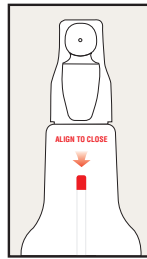


Twist off, Refill Align Tip to Tube Push, Snap to Close

Optional Packaging and Recycling Logos



More Savings [!],[,] Less Waste [!]-or- More Savings [!]*



DIRECTIONS FOR USE. It is a violation of Federal law to use this product in a manner inconsistent with its labeling.

For all products USE ONLY IN WELL-VENTILATED AREAS.

Before use, open windows -and/or- turn on fan(s). If vapors bother you, leave room while product is working.

Cleaning, Deodorizing, Stain Removal

[How] to clean -and/or- deodorize -and/or- remove stains:

- **Full strength or diluted use:** Use full strength -or- mix 1/2 cup [(4 [fl] oz)] -or- 1 cup [(8 [fl] oz)] of this product in -or- with 1 gallon [warm] water. Apply directly with [damp] sponge -or- mop -or- cloth -or- rag. [Rinse or wipe clean.] [Allow to air dry.]
- **Floors:** Mop floor with 1 cup [(8 [fl] oz)] of this product mixed in 1 gallon of water. Rinse for best shine.
- **Toilet bowls:** Flush toilet and add 3/4 cup [(6 [fl] oz)] of this product to bowl water. Brush thoroughly to wet all surfaces, including under the rim. Let stand 5 min[utes] before flushing.

- **Spray application:** [Turn nozzle [counter]clockwise to open -or- Rotate nozzle to FOAM or SPRAY.] Spray [directly] onto surface. [Rinse or wipe clean.] [Allow to air dry.] -or- Spray 6-8 in[ches] from surface and allow product to penetrate tough stains and messes. Wipe with a wet sponge or cloth and rinse with water. No scrubbing required. For stronger jobs, use FOAM option. Spray and let product stand on surface for several minutes before wiping.

Allergen Destruction Of Dust Mite And Cockroach Matter/Particles And Pet Dander

To [clean and] destroy specified allergens

- **Full strength:** Apply undiluted product directly to sponge -or- cloth -or- rag -or- mop. Wet surface completely. Let stand 5 min[utes]. [Rinse or wipe clean.] [Allow to air dry.]

- **Spray application:** [Turn nozzle [counter]clockwise to open -or- Rotate nozzle to FOAM or SPRAY.] Spray product 4-6 in[ches] from surface until thoroughly wet. Let stand 3 min[utes]. [Rinse -or- wipe clean.] [Allow to air dry.]

Allergens

- Dust mite matter -or- particles
- Cockroach matter -or- particles

- Pet dander

Sanitization

To [clean] [and] sanitize hard, nonporous nonfood contact surfaces:

- **Direct application -or- full strength use:** Directly apply [this product] with cloth -or- sponge -or- mop -or- rag and wet surfaces completely. Let stand 5 min[utes]. [Rinse -or- wipe clean.] [Allow to air dry.] For heavily soiled surfaces, preclean surface before sanitizing.

-or-

- **Spray application:** [Turn nozzle [counter]clockwise to open.] Spray product 4-6 in[ches] from surface until thoroughly wet. Let stand 30 sec[onds]. [Rinse -or- wipe clean.] [Allow to air dry.] For heavily soiled surfaces, preclean surface before sanitizing.

-or-

- **Diluted:** Mix 1/2 -or- 1 cup [this product] per gallon [warm] [soft] water. Wet surface completely with cloth -or- sponge -or- mop -or- rag. Let stand 5 min[utes]. [Rinse -or- wipe clean.] [Allow to air dry.] For heavily soiled surfaces, preclean surface before sanitizing.

Fungi And Mold And Mildew

To [clean and] kill fungi -and/or- mold -and/or- mildew on [hard,] [nonporous] surfaces:

- **Full strength:** Apply product directly to surface or dilute 1 cup per gallon warm water and apply -or- with cloth -or- sponge -or- mop -or- rag and wet surfaces completely. Let stand 5 min[utes]. [Rinse -or- wipe clean.] [Allow to air dry.] For heavily soiled surfaces, preclean surface before disinfecting.

-or-

- **Spray application:** [Turn nozzle [counter]clockwise to open -or- Rotate nozzle to FOAM or SPRAY.] Spray product 4-6 in[ches] from surface until thoroughly wet. Let stand 5 min[utes]. [Rinse -or- wipe clean.] [Allow to air dry.] For heavily soiled surfaces, preclean surface before disinfecting.

Disinfection

To [clean and] disinfect [hard, nonporous surfaces]:

- **Spray application:** [Turn nozzle [counter]clockwise to open -or- Rotate nozzle to FOAM or SPRAY.] Spray product 4-6 in[ches] from surface until thoroughly wet. Let stand 30 sec[onds] **must list the following in directions for use if Poliovirus and/or Norovirus are listed on the label**, [1 min[ute] for Poliovirus and Norovirus]. [Rinse -or- wipe clean.] [Allow to air dry.] -or- Spray 6-8 in[ches] from surface and allow product to penetrate tough stains and messes. Let stand 30 sec[onds] **must list the following in directions for use if Poliovirus and/or Norovirus are listed on the label**, 1 min[ute] for Poliovirus and Norovirus. Wipe with a wet sponge or cloth and rinse with water. No scrubbing required. For heavily soiled surfaces, preclean surface before disinfecting.

-or-

- **Direct application -or- full strength use:** Directly apply [this product] with cloth -or- sponge -or- mop -or- rag and wet surfaces completely. Let stand 5 min[utes] . [Rinse -or- wipe clean.] [Allow to air dry.] For heavily soiled surfaces, preclean surface before disinfecting.

-or-

- **Diluted -or- light use -or- floors:** Mix 1/2 cup [(4 [fl] oz)] -or- 1 cup [(8 [fl] oz)] [of this product] per gallon warm -and/ or- soft water. Wet surface completely with cloth -or- sponge -or- mop -or- rag. Let stand 5 min[utes] [Rinse -or- wipe clean.] [Allow to air dry.] For heavily soiled surfaces, preclean surface before disinfecting. [Avoid accidents. Floors and surfaces may be slippery when wet.] **Must add the following to these directions if *Trichophyton interdigitale* tested as *Trichophyton mentagrophytes* and/or *Aspergillus niger* are listed on label:** These dilution directions for use are not valid for *Trichophyton interdigitale* **tested as *Trichophyton mentagrophytes*** -and/or- *Aspergillus niger*.

-or-

- **For toilet bowls:** Flush toilet and add 3/4 cup [(6 [fl] oz)] [of this product] to bowl water. Brush thoroughly to wet all surfaces, including under the rim. Let stand 5 min[utes] before flushing.

-or-

- **Food Contact Surfaces:** A potable water rinse is required after disinfection.

Specific instructions for use of all (spray and dilutable) This Product protects against (HIV-1), (HBV) and (HCV):

To kill HIV-1[, HBV and HCV]

This product kills HIV-1[, HBV and HCV] on precleaned hard, nonporous surfaces/objects previously soiled with blood/body fluids in health care settings (e.g., hospitals, nursing homes) or other settings in which there is an expected likelihood of soiling of hard, nonporous surfaces/objects with blood or body fluids, and in which the surfaces/objects likely to be soiled with blood or body fluids can be associated with the potential for transmission of Human Immunodeficiency Virus Type 1 [(HIV-1) (associated with AIDS)] [, Human Hepatitis B Virus^{◇◇} (HBV) and Human Hepatitis C Virus^{◇◇◇} (HCV)].

Special Instructions To Clean And Decontaminate Against HIV-1 [, HBV [And] HCV [And Ebola Virus]] On Precleaned Hard, Nonporous Surfaces/Objects Soiled With Blood/Body Fluids

Personal protection: When handling items soiled with blood or body fluids, use disposable latex gloves, gowns, masks and eye coverings.

Cleaning procedure: Blood and other body fluids must be thoroughly cleaned from surfaces and other objects before applying this product.

Disposal of infectious materials: Use disposable latex gloves, gowns, masks and eye coverings. Blood and other body fluids must be autoclaved and disposed of according to local regulations for infectious waste disposal.

Contact time (for dilution): Dilute product 1:32. Apply to surface. Let stand 5 min[utes]. ***Dilution directions only applicable for HIV-1, HBV, and HCV.*** [Rinse -or- wipe clean.] [Allow to air dry.]

For spray product (full strength): Wet surface and let stand 30 sec[onds]. [Allow to air dry.]

The following is only for products with medical devices listed on label or Special instruction to kill HIV-1, HBV and HCV

This product is not to be used as a terminal sterilant/high level disinfectant on any surface or instrument that (1) is introduced directly into the human body, either into or in contact with the bloodstream or normally sterile areas of the body, or (2) contacts intact mucous membranes, but which does not ordinarily penetrate the blood barrier or otherwise enter normally sterile areas of the body. This product may be used to preclean or decontaminate critical or semicritical medical devices prior to sterilization or high-level disinfection.

Disinfecting Against Avian Influenza A Virus

Farm Premises And Poultry House Disinfectant [Instructions]

[Directions For Use:]

1. Remove all poultry or animals and feeds from premises, trucks, vehicles, coops, crates and enclosures.
2. Remove all litter and manure or droppings from floors, walls and surfaces of barns, pens, stalls, chutes and other facilities and fixtures occupied or traversed by animals or poultry.
3. Empty all troughs, racks and other feeding and watering appliances.
4. Thoroughly clean all surfaces with soap or detergent and rinse with water.
5. Saturate all surfaces with the recommended disinfecting solution for a period of 5 min[utes] (direct application or dilute use) -or- 30 sec[onds] (spray application)
6. Immerse all halters, ropes and other types of equipment used in handling and restraining animals, as well as forks, shovels and scrapers used for removing litter and manure.
7. Ventilate buildings, cars, boats, coops and other closed spaces. Do not house livestock or poultry or employ equipment until treatment has been absorbed, set or dried.
8. Thoroughly scrub all treated feed racks, mangers, troughs, automatic feeders, fountains and waterers with soap or detergent, and rinse with potable water before reuse.

General Cleaning/Deodorizing/Non-Pesticidal Claims

- ~~Now~~ [Also] [choose] [with] foaming action -or- foam
- Bleach for kitchen and bath
- Brightens
- ~~Now~~ [Choose] [with] foam [option -and/or- setting] [or spray]
- ~~Now~~ [Choose] [with] Power Foam -and/or- Powerfoam -and/or- Foam Power -and/or- FoamAction for a deep clean
- Citrus Blend
- ~~Citrus~~ ~~and/or~~ Floral ~~and/or~~ Fresh ~~and/or~~ Pleasant ~~scent -or- fragrance~~
- ~~Citrus~~ ~~and/or~~ Fresh ~~and/or~~ Natural Breeze
- Citrus Zest
- Cleans and removes stains from washable floors
- Cleans [dirty floors] greasy counter[top]s
- Cleans everyday kitchen messes like dirt, grease and food stains
- Cleans tough messes
- Clorox® [bleach] means clean!
- Commercial Solutions
- Contains a powerful cleaner plus Clorox® bleach
- Contains sodium hypochlorite plus a cleaner
- Cuts through [tough] grease and grime
- Degreaser -or- Degreases
- Delivers the trusted power of Clorox®
- Deodorizes
- Deodorizes and has a clean, fresh scent -or- fragrance
- Destroys -and/or- Eliminates stains in the kitchen -or- bath
- Destroys -and/or- Eliminates stains on contact
- Destroys -and/or- Eliminates stains without scrubbing
- Destroys -and/or- Eliminates tough stains -or- messes -or greasy dirt
- Destroys -and/or- Eliminates your kids' toughest messes -or- grime
- Destroys [challenging] bathroom stains
- [Easily] removes -or- cleans tough bathroom -and/or- restroom -and/or- kitchen -and/or- household -and/or- office -and/or- workplace dirt -or- soils -or- grime -and/or-soap scum [!]
- Easy Drop Delivery -and/or- Refill
- Eliminates 4x more stains^{SP}
- Eliminates food odors like garlic and onion left behind in -or- on surfaces
- Eliminates -or- Destroys -or- Removes [the] tough[est] stains the 1st time
- Eliminates the toughest stains the first time around
- Enhanced with Clorox® bleach for tough bathroom soils
- ~~Now~~ Foam lasts longer [than spray]
- Foam [option -and/or- setting] absorbs grease -and/or- sticks [it] to stains
- Foam [option -or- setting] sticks -or- stays -or- holds longer [than spray]
- Foam -or- Power Foam -or- Powerfoam -or- Foam Power -or- FoamAction [option -or- setting] sticks to stains [and absorbs grease]
- Foam or spray
- For a cleaner -and/or- fresher bathroom -or- restroom -and/or- kitchen -and/or- home -or-house -and/or- place -and/or- work -or- office place -or- environment]
- For daily [use] [cleaning]
- Fresh Mist
- Freshens the -or- your bathroom -or- restroom -and/or- kitchen -and/or- home -or- house -and/or- place -and/or- work -or- office place -or- environment
- [Great] for [the] school[s] -and/or- classroom[s] -and/or- work -and/or- [the] office
- Has -or- Leaves] a clean scent -or- fragrance
- Industrial Size
- Institutional Size
- Last Drop Access
- Leaves [the] [kitchen -and/or- bathroom] surfaces [clean and] sanitary
- Makes [cleaning] [your job] easier [in the kitchen -and/or- bathroom -and/or- house -and/or- in the work -or- office place -or- at work
- Multi-Purpose -or- Surface
- Multi Surface Cleaning
- Multi Surface Stain Removal
- No Waste -or-Wasteless Bottle
- Not for Household Use
- Not just for grease! Destroys -and/or- Eliminates stains from coffee -and/or- juice -and/or- wine -and/or- tea -and/or- soda [on contact]
- One step cleaner
- One-step [multi-surface] cleaner
- Original [scent]
- Patented design bottle
- Penetrates -and/or- removes -and/or- eliminates -and/or- destroys tough stains
- Pleasant fragrance
- Powered by Clorox® bleach
- Power of bleach [without the [strong] smell]
- Pour down garbage disposal to deodorize
- Powerful cleaning formula
- Recyclable [bottle]
- Removes -and/or- cleans -and/or- bleaches out -and/or- cuts [mold stains] [and] [mildew] stains.
- Removes -and/or- cleans -and/or- bleaches [out] -and/or- cuts through -and/or- tough on [tough] stains **insert soil(s)/stain(s) from Table 4**
- Removes food stains
- Removes -or- Eliminates -or- Destroys [your -or- the] [toughest] pet stains
- Removes -or- Eliminates -or- Attacks -or- Gets rid of -or- Melts away tough [soap scum] [[bathroom -and/or- restroom -and/or- kitchen -and/or- household -and/or- office -and/or- workplace] dirt -or- soils -or- grime][!]
- Removes odors
- Removes stains on contact
- Removes stains without scrubbing
- Removes [stubborn -or- stuck-on] stains
- Removes tough stains, fingerprints, bathroom soils, crayon marks, heel marks, pencil marks, grease and dirt
- Removes tough stains -or- messes -or- greasy dirt
- Safe on 22 -or- **insert number based on approved surfaces materials** [household] surface materials!
- Safe to -or- for use on **insert surface material(s) from Table 3**
- Six -or- 6 month supply[!]^{ooo}

- Spray for speed -and/or- coverage -and/or- foam for power -or- tight areas -and/or- tough stains
- Tackles dirt and grime
- [Teachers -and/or- Parents] Back to School means back to germs
- The convenient -and/or- easy -and/or- effective way to keep your [home -or- house -and/or- bathroom -and/or- kitchen -and/or- common areas -and/or- work -or- office [area -or- place -and/or- environment] looking “just cleaned”
- The cleaning power -and/or- effectiveness [that easily removes tough bathroom -and/or- restroom -and/or- kitchen -and/or- household [dirt] [soils] [grime] [like soap scum][!]]
- The only bathroom cleaner with the cleaning power of Clorox® bleach
- The smell of clean
- Tough on grime -and/or- soap scum -and/or- dirt -and/or- [other] [tough] [bathroom -or- restroom -and/or- kitchen -and/or- household -and/or- work -or- office [place] soils[!]]
- Ultra Fresh

- [Unbeatable] foam [option -and/or- setting] grabs -and/or- holds -and/or- clings -and/or- sticks -and/or- grips -and/or- removes [to] [tough] stains [longer]
- Up to [a] 30% [discount] [cheaper] [free][!]*
- ~~[New]~~ [Use -and/or- choose] foam [option -and/or- setting] for [mildew] stains -and/or- grease
- [Use as a] [Pourable] refill for this product -and/or- [multi-surface] cleaner
- [Use] On[:] [hard, nonporous surfaces [the product will not damage:] **insert use surface(s) from Table 1**
- ~~[Value]~~ ~~[or-]~~ Economy ~~[or-]~~ Budget size -or- refill
- Warehouse [club] size
- Where to use this product -or- For use around -or- in -or- throughout the **insert use site(s) from Table 2**
- Whitens
- Wipes out stains in kitchen and bath
- [With] [long-]lasting foam

Environmental Claims

[This product is] suitable for septic [systems] -and/or- wastewater systems -or- treatment plants

- Not harmful to septic systems

Specific for spray and refill packages

- Accurate-aim trigger [option] [for better [bleach] control]
- All Purpose -or- Multi-Purpose -or- Multi-Use -or- Multi-Room -or- Multi-Surface [Spray] Cleaner [with bleach]
- All-Spray -or- Easy Spray -or- Empt-Ease -or- Reliaspray -or- Spray-All [Bottle] [Technology]
- Anti-foam -or- anti-suds nozzle
- Bathroom -and/or- Kitchen Spray
- Better aim [for better [bleach] control]
- Bleach what you want to bleach and nothing more!
- Concentrated [foaming] spray action [for better [bleach] control]
- Controlled bleach spray
- Direct-[spray] ~~[or-]~~ aim trigger [option] [for better [bleach] control]
- Dual-control [nozzle] ~~[or-]~~ trigger [option for better [bleach] control] [spray and foaming option]
- Easy Drop Delivery
- [Economy] refill [size]
- Foam quickly cuts grease marks and tough stains
- Foaming[ing] [action] easily removes soap scum -and/or- dirt
- Foaming [action] [spray] stays where you spray
- Foaming action thoroughly cleans, shines, disinfects and deodorizes for you
- Foaming trigger [option] [for more accurate [bleach] application]

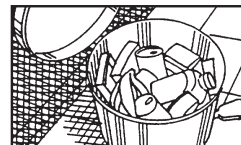
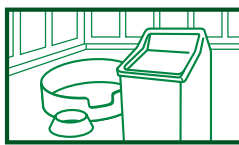
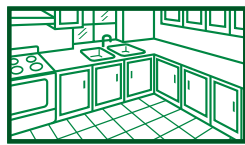
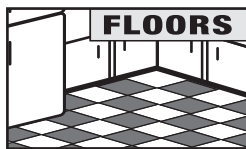
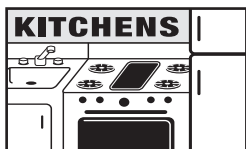
- Foaming [trigger] ~~[or-]~~ spray ~~[or-]~~ nozzle] option [for better [bleach] control]
- Foaming, stays where you spray
- Foaming -or- sudsing nozzle
- Light effervescent foam clings to surfaces allowing you to see exactly where you applied it
- Low -or- no foam -or- suds nozzle
- Multi-[action] [control] nozzle -or- trigger [option for better [bleach] control]
- Multi-[action] [control] nozzle -or- trigger [spray and foaming option]
- Prevents [-or- reduces -or- eliminates] over-spray
- Spray [Formula]
- Sudsing -or- foaming action
- Targeted [foaming] spray action [for better [bleach] control]
- [Thick] foam starts to work[s] on contact

Specific for 136 fl oz size

- Makes 17 gallons of diluted disinfecting solution

Specific for non-spray products (i.e., dilutable, industrial and warehouse packages)

- Concentrate -or- Concentrated Formula



Packaging Related Claims

- Align to close
- [Be] [-or- Get] RefillSmart^(®) [-or- TM][!]
- Get -or- Spray Every Drop^(®) [-or- TM][!]
- Last Drop Access
- No Waste -or- Wasteless Bottle
- Patented design bottle
- Recyclable bottle
- Smart Tube^(®) [-or- TM] Technology
- [Use as a] [-and/or- Pourable] refill for this product

Allergen Destruction Of Dust Mite And Cockroach Matter/Particles And Pet Dander Claims

- Breaks down -or- Deactivates -or- Destroys -or- Penetrates -or- Reduces] dust mite matter -or- particles, cockroach matter -or- particles and pet dander allergens found in dust
- Breaks down -or- Deactivates -or- Destroys -or- Penetrates -or- Reduces] [household] dust mite matter -or- particles, cockroach matter -or- particles and pet dander allergens
- Destroys 99% of pet -and/or- dust mite allergens
- Removes 99% of allergens^{††}
- Removes -and/or- Controls 99% of common [indoor] allergens^{††}
- This product cleans, kills germs, dust mite matter -or- particles, cockroach matter -or- particles, pet dander while cleaning hard, nonporous surfaces such as sinks, counters, refrigerators, appliances and fiberglass tubs.
- [**This product**] Removes [more than -or greater than -or over] [**insert number between 90 and 99.9%**] of the following allergen(s)^{††}

Sanitization Claims

- Kills 99.999% of bacteria^{†††}
- Leaves surfaces sanitized
- Sanitizes surfaces
- Use [throughout the house] on hard, nonporous nonfood contact surfaces [such as] **insert use site(s) from Table 2**

Disinfection Antimicrobial Claims

- 3-in-1 [Kills Germs] [Disinfects][,] [+] Cleans -or- Removes -or- Destroys 99% of Allergens^L [with] [Clorox[®] bleach]
- A bleach product for household [-and/or- institutional -and/or- industrial] cleaning and disinfecting
- A [smarter] way to disinfect -and/or- clean the bathroom -and/or- restroom -and/or- kitchen -and/or- home -and/or- household -and/or- office -and/or- workplace office -and/or- classroom -and/or- school
- Anti-bacterial [action]
- Anti-bacterial cleaner
- Bacteria-fighting -or- Germ-fighting formula
- Bactericide -or- Bactericidal
- Bathroom -or- restroom disinfectant
- Bleach disinfectant [-and/or- cleaner]
- Broad spectrum disinfectant -or- disinfectancy [cleaner]
- Can reduce the spread of kitchen -and/or- school] -and/or- classroom -and/or- bathroom -or- restroom -or- household -or- office -or- work -or- office place bacteria -and/or- germs on treated hard, nonporous surfaces
- Clean. Disinfect. Protect.
- Cleaner and disinfectant in one
- Cleaning -and/or- effectiveness so your bathroom -and/or- home -and/or- house -and/or- school] -and/or- classroom -and/or- kitchen -and/or- office -and/or- work -or- office [place] is free of grime -and/or- dirt -and/or- soils -and/or- soap scum you can see and germs -and/or- bacteria you can't [see]
- Cleans -and/or- disinfects bathroom -and/or- school -and/or- classroom -and/or- restroom -and/or- kitchen -and/or- home -or- household -and/or- office -and/or- work -or- office [place]
- Disinfecting bleach cleaner
- Disinfects
- Disinfects [inside -and/or- outside of] appliances
- Disinfects and cleans your home^P
- Disinfects and deodorizes by killing common household germs and controlling their odors
- Disinfects as it cleans
- Disinfects as it kills bacteria
- Disinfects for pennies
- Disinfects nonporous [hard -and/or- solid] surfaces
- Easily cleans -and/or- deodorizes -and/or- sanitizes -and/or- disinfects
- [Easy -and/or- convenient] way to disinfect
- [Effective] [bathroom -and/or- restroom -and/or- kitchen -and/or- household -and/or- office -and/or- workplace] disinfectant -and/or- cleaner
- [Effective] disinfectant [in presence of 5% serum load -or- organic soil]
- Eliminates odors caused by bacteria -or- germs -or- mildew
- Fast-acting disinfectant [cleaner] **this claim for spray application(s) only**
- For daily [use cleaning -and/or- disinfecting]
- Germicide -or- Germicidal
- Hospital -and/or- home disinfectant -and/or- cleaner
- Hospital, institutional disinfectant
- [Kills] [99.9% of common household] germs on hard, nonporous surfaces: Salmonella enterica [(Salmonella)], Pseudomonas aeruginosa [(Pseudomonas)], Staphylococcus aureus [(Staph)], Cold virus (Rhinovirus), Flu virus [(Influenza A2 Virus)], **Insert any other organisms desired from the Disinfection Organisms table. Note: include Trichophyton interdigitale tested as Trichophyton mentagrophytes [(Athlete's Foot Fungus)] in this germ claim if instructions for MOLD AND MILDEW kill, with the respective organisms, Trichophyton interdigitale tested as Trichophyton mentagrophytes [(Athlete's Foot Fungus)], Aspergillus niger [(mildew)], are not included on the label.**
- Kills [99.9% of] Germs
- Kill[s] -and/or- eliminate[s] -and/or- disinfect[s] -and/or- remove[s] -and/or- attack[s] -and/or- get[s] rid of -and/or- reduce[s] [99.9% of] [the] bacteria -and/or- germs -and/or- virus[es]± [commonly] found in -or- on [the] **insert use site(s) from Table 2**
- Kill[s] -and/or- eliminate[s] -and/or- disinfect[s] -and/or- remove[s] -and/or- attack[s] -and/or- get[s] rid of -and/or- reduce[s] [99.9% of] [the] cold virus^{§§} -or- flu virus^{§§§} -or- cold and flu virus^{es}±¹⁷ [commonly] found in -or- on [the] **insert use site(s) from Table 2**
- Kill[s] -and/or- eliminate[s] -and/or- disinfect[s] -and/or- remove[s] -and/or- attack[s] -and/or- get[s] rid of -and/or- reduce[s] [99.9% of] [the] Avian Influenza A virus on precleaned hard, nonporous surfaces
- Kill[s] -and/or- eliminate[s] -and/or- disinfect[s] -and/or- remove[s] -and/or- attack[s] -and/or- get[s] rid of -and/or- reduce[s] [99.9% of] Methicillin-resistant Staphylococcus aureus [(MRSA)] -or- MRSA^{aa} [commonly] found in -or- on [the] **insert use site(s) from Table 2**
- Kill[s] -and/or- eliminate[s] -and/or- disinfect[s] -and/or- remove[s] -and/or- attack[s] -and/or- get[s] rid of -and/or- reduce[s] [99.9% of] [the] Norovirus^o found in -or- on [the] **insert use site(s) from Table 2**
- Kills bacteria ordinary dish soap can't
- Kills cold and flu viruses¹⁷
- Kills E. Coli¹³, Salmonella¹⁴, Norovirus^o and Staph¹⁵
- Kills Germs -and/or- Flu Viruses^{§§§}
- Kills germs while it cleans
- Kills -or- eliminates -or- destroys [99.9%] cold virus^{§§} -or- flu virus^{§§§}
- Kills -or- eliminates -or- destroys [99.9%] E. coli¹³ -and/or- Salmonella¹⁴] [harmful kitchen germs -or- bacteria]
- Kills -or- eliminates -or- destroys [99.9%] of viruses that cause cold^{§§} -or- flu^{§§§}
- Kitchen disinfectant
- One step cleaner and disinfectant¹⁸
- Removes stains and disinfects
- Salmonella enterica^{††1} (Salmonella) and Staphylococcus aureus (Staph) are common germs found where food is prepared and stored. This product kills these harmful germs and helps control the hazard/spread of food-borne contamination on all treated hard, nonporous kitchen surfaces
- This cleaner -and/or- disinfectant combines cleaning and disinfecting [in one product] [in one step¹⁸]

- [This product] has the cleaning power -and/or- effectiveness of Clorox® to clean and disinfect
- This product is a cleaner disinfectant which combines cleaning, disinfecting and stain removal in one product
- Virucide† -or- Virucidal†
- **For spray:** Kills 99.9% of [common] household germs -and/or- bacteria -and/or- viruses
- **For spray; This claim can only be used for organisms with 30 second contact time on label:** Kills 99.9% of [common] household germs [bacteria -and/or- viruses†] in 30 sec[onds]
- **For spray** Kills Ebola Virus [in 30 sec[onds]]
- **For spray** Kills **X** more germs^o
- **For spray** Kills 11 antibiotic resistant organisms [that can hide at home]

- **For spray** Kills 11 -or- **X insert number on label** antibiotic-resistant organisms [that can hide at home]
- **Direct application:** Kills X germs **X represents disinfection organisms approved for direct application; input value for X based on Disinfection Organism Table - Direct Application and organisms to be listed on label**
- **Spray application:** Kills X germs **X represents disinfection organisms approved for spray application; input value for X based on Disinfection Organism Table - Spray Application and organisms to be listed on label**

Exposure Reduction Claim

- Reduces exposure to Methicillin resistant Staphylococcus aureus [(MRSA)] from treated surfaces

Fungi and Mold and Mildew Claims

- Kills mold and mildew
- Kills Athlete's Foot Fungus^[8]
- Mildewcidal -or- Mildewcide
- Fungicidal -or- Fungicide
- Removes -and/or- cleans -and/or- bleaches out -and/or- cuts through -and/or- tough on mold -and/or- mildew
- Removes -and/or- bleaches out mold and mildew stains
- Antifungal

Emerging Viral Pathogens

Allowable and subject to the terms described in Agency guidance dated August 19, 2016, "Guidance to Registrants: Process for Making Claims Against Emerging Viral Pathogens not on EPA-Registered Disinfectant Labels."

This product meets the criteria to make claims against certain emerging pathogens from the following viral categories:

- Enveloped viruses
- Large non-enveloped viruses
- Small non-enveloped viruses

<i>For an emerging viral pathogen that is a/an...</i>	<i>... following the directions for use for the following organisms on the label:</i>
Enveloped viruses	Rotavirus Adenovirus Hepatitis A Virus Rhinovirus Coxsackievirus B3 Canine parvovirus Enterovirus EV D-68 Feline Calicivirus (as surrogate for Norovirus) Poliovirus
Large Non-Enveloped viruses	Hepatitis A Virus Rhinovirus Coxsackievirus B3 Canine parvovirus Enterovirus EV D-68 Feline Calicivirus (as surrogate for Norovirus) Poliovirus
Small Non-Enveloped viruses	Rhinovirus Canine parvovirus Feline Calicivirus (as surrogate for Norovirus)

This product has demonstrated effectiveness against viruses similar to ***insert name of emerging virus*** on hard, nonporous surfaces. Therefore, ***this product*** can be used against ***insert name of emerging virus*** when used in accordance with the directions for use against ***insert name of supporting virus(es)*** on hard, nonporous surfaces. Refer to the CDC -or- OIE website at ***insert pathogen-specific website address*** for additional information.

Insert name of illness/outbreak is caused by ***insert name of emerging virus***. ***This product*** kills similar viruses and therefore can be used against ***insert name of emerging virus*** when used in accordance with the directions for use against ***insert name of supporting virus(es)*** on hard, nonporous surfaces. Refer to the CDC -or- OIE website at ***insert pathogen-specific website address*** for additional information.

Organisms

Bacteria	Strain and/or ATCC	Spray (30 sec)	Full Strength¹⁷ (5 min)	Use Dilution¹⁸ (5 min)
Acinetobacter baumannii	[ATCC 15308]	x	x	x
Bordetella pertussis	[ATCC 12743]	x		
Carbapenem Resistant Klebsiella pneumoniae	[ATCC BAA-1705]	x		
Community associated methicillin resistant Staphylococcus aureus [(CA-MRSA)]	[NARSA NRS384 genotype USA300]	x		
Community associated methicillin resistant Staphylococcus aureus [(CA-MRSA)]	[NARSA NRS123 Genotype USA400]	x		
Escherichia coli [(E. coli O157:H7)]	[ATCC 35150]	x	x	x
ESBL (Extended Spectrum Beta Lactamase) producing Escherichia coli (ESBL producing E. coli)	[ATCC BAA-196]	x		
Legionella pneumophila	[ATCC 33153]	x		
Linezolid Resistant Staphylococcus aureus [(LRSA)]	[NARSA NRS119]	x		
Listeria monocytogenes	[ATCC 19117]	x	x	x
Methicillin resistant Staphylococcus aureus [(MRSA)]	[ATCC 33591]	x	x	x
Multi-drug resistant [(MDR)] Acinetobacter baumannii ^[1]	[ATCC 19606]	x		
Multi-drug Resistant Enterobacter aerogenes [(MDR)] ^[2]	[ATCC 29751]	x		
Multi-drug Resistant Enterococcus faecium ^[3]	[ATCC 51559]	x		
Multi-drug resistant [(MDR)] Klebsiella pneumoniae ^[4]	[ATCC 51503]	x		
Multi-drug resistant [(MDR)] Staphylococcus aureus ^[5]	[ATCC 14154]	x		
Pseudomonas aeruginosa [(Pseudomonas)]	[ATCC 15442]	x	x	x
Salmonella enterica ^[††] [(Salmonella)]	[ATCC 10708]	x	x	x
Shigella dysenteriae [(Shigella)]	[ATCC 13313]	x	x	x
Shigella flexneri Serotype 1B	[ATCC 9380]	x		
Staphylococcus aureus [(Staph)]	[ATCC 6538]	x	x	x
Streptococcus pneumoniae [(Strep)]	[ATCC 6305]	x	x	x
Streptococcus pyogenes [(Strep)]	[ATCC 19615]	x	x	x
Vancomycin-intermediate resistant Staphylococcus aureus [(VISA)]	[CDC HIP 5836]	x		
Vancomycin resistant Enterococcus faecalis [(VRE)]	[ATCC 51299]	x	x	x
Vancomycin resistant Staphylococcus aureus [(VRSA)]	[NARSA VRS1]	x		
Mold, Mildew, Fungi	Strain and/or ATCC	Spray (30 sec)	Full Strength¹⁷ (5 min)	Use Dilution¹⁸ (5 min)
Aspergillus niger ¹¹ [(mildew)]	[ATCC 6275]	x	x	
Candida albicans	[ATCC 10231]	x		
Trichophyton interdigitale <i>tested as Trichophyton mentagrophytes</i> ¹² [(Athlete's Foot Fungus)]	[Strain CDC y-68+]	x	x	

Viruses Enveloped	Strain and/or ATCC	Spray (30 sec)		Full Strength⁹ (5 min)	Use Dilution¹⁰ (5 min)
‡Avian Influenza A Virus [(H3N2)] [§]	[ATCC VR-2072 Strain A/ Washington/897/80 X A/ Mallard/New York/6750/78]	x			
‡Avian Influenza A Virus [(H9N2)] [§]	[Turkey/Wis/66]			x	x
‡Canine Distemper Virus	[ATCC VR-128] [Strain Lederle]	x			
‡Ebola virus	[Zaire-Kikwit]	x			
‡Hantavirus	[Prospect Hill virus]	x			
‡Herpes Simplex Virus type 1	[ATCC VR-733][Strain F(1)]	x			
‡Herpes Simplex Virus type 2	[ATCC VR-734] [Strain G]	x			
‡Human Coronavirus [(cold virus)]	[ATCC VR-740] [Strain 229-E]	x			
‡, ##[Human] Hepatitis B Virus ^{◇◇} [(HBV)]	[Strain DHBV16]	x		x	x
‡, ##[Human] Hepatitis C Virus ^{◇◇◇} [(HCV)]	[ATCC VR-1422] [Strain NADL]	x		x	x
‡, ##Human Immunodeficiency Virus type 1 [(HIV-1)] [(AIDS Virus)]	[Strain HTLV-III B]	x			
‡, ##HIV type 1	[Strain RF]	x		x	x
‡Parainfluenza 1 Virus	[Sendai] [ATCC VR-907]	x		x	x
‡2013 Influenza A Virus [(H7N9)]	[Strain A/Anhui/1/2013, CDC]	x			
‡Influenza A2 Virus, [Flu virus]	[Strain Hong Kong] [ATCC VR-544]	x		x	x
‡Influenza B Virus [(flu virus)]	[ATCC VR-823] [Strain B/Hong Kong/5/72]	x			
‡Measles Virus	[ATCC VR-24]	x			
‡Middle East Respiratory Syndrome Coronavirus [(MERS-CoV)]	[Strain EMC/2012]	x			
‡Mumps Virus	[Strain Jones] [ATCC VR-1438]	x			
‡Respiratory Syncytial Virus [(RSV)]	[ATCC VR-26] [Strain Long]	x			
‡SARS-Associated Coronavirus [(SARS CoV)]	[CDC Strain 200300592]	x			
Viruses Large Non-Enveloped	Strain and/or ATCC	Spray (30 sec)		Full Strength⁹ (5 min)	Use Dilution¹⁰ (5 min)
‡Adenovirus Type 2 [(causes colds)]	[Adenoid 6 strain] [ATCC VR-846]	x		x	x
‡Rotavirus	[Strain WA]	x		x	x
Viruses Small Non-Enveloped	Strain and/or ATCC	Spray (30 sec)	Spray (1 min)	Full Strength⁹ (5 min)	Use Dilution¹⁰ (5 min)
‡Canine Parvovirus	[ATCC VR-2017] [Strain Cornell]	x			
‡Coxsackievirus B3 [(Coxsackie)]	[ATCC VR-30] [Strain Nancy]	x		x	x
‡Enterovirus EV-D68	[ATCC VR-561]	x			
‡[Human] Hepatitis A Virus [(HAV)] [HAV-1]	[clone 24A of pHM-175 strain]	x		x	x
‡Norovirus or Norwalk Virus [◇]	[F-9 strain, ATCC VR-782]		x	x	x
‡Poliovirus type 1	[Strain Chat] [ATCC VR-1562]		x	x	x
‡Rhinovirus [(Cold virus)]	[ATCC VR-1110]	x		x	x

Table 1 Use Surfaces

- Appliance Exterior{s}
- [Baby] -and/or- {Children's} Toy{s}
- Baby Furniture (~~-, Changing Tables~~)
- [Basement] Washable Walls
- ~~{Bath} Tub{s}~~
- [Bathroom -and/or- Kitchen] Windowsills
- Bed Frame{s}
- Bidet{s}
- Blinds
- Cabinets
- Cat -and/or- Dog -and/or- Pet Dish{es} -or- Soiled Surface{s}
- Ceramic Floors
- [Classroom] Desks
- Counter{top}{s}
- Cribs
- ~~Desk{s}~~
- [Diaper] Changing Table{s}
- Diaper Pail{s}
- [Dining -or- Kitchen -or- Play] Table
- Dish Pail{s}
- Dish Rack{s}
- Doorknob{s}
- Drawers^P
- Exam{ination} Table{s}
- Finished wood [surfaces]
- Floor{s} [No Wax -and/or- Washable]
- Glazed -or- Ceramic Tile
- Hand Dryer Buttons
- Highchair{s}
- {Inside -and/or- Outside of} Appliances [such as] [Refrigerators, Microwaves, Freezers]
- [Inside -and/or- Outside of] Toilet{s} **this claim cannot be used with spray directions**
- **{insert surface material(s) from Table 3** [bath]tubs -and/or- {sinks}
- ~~{Kitchen~~ **insert use site(s) from Table 2** Counter{s}
- Laminated Surface{s}
- Lamp{s}
- Light Switches
- [Manual] Pencil Sharpener{s}
- Many Crib Surface{s}^P
- Microwave exterior{s}
- Outdoor Furniture (except cushions and wood frames)
- Outside of Toilets
- Oven{s} [Exterior{s}]
- Paper Towel Dispensers -or- Holders
- [Patient] Chair{s}
- Picnic Tables [nonporous] (non-wooden)
- Plastic Cutting Boards
- Plastic laundry {basket{s}} -and/or- hamper{s}
- Plastic Mattress Cover{s}
- Porta-Potty{ies} -or- Portable Bathrooms
- Range Hoods
- Refrigerator Doors
- Refrigerator -and/or- freezer exterior{s}
- Restaurant Highchairs
- Salad Bar -and/or- Buffet -and/or- Cafeteria] Sneeze Guard{s}
- School Toys ~~-and/or- Supplies~~
- Shelves ~~-or-~~
- Plastic Shower Curtain{s}
- Shower {stalls}
- Sink{s}
- Stove{top}{s}
- Table{top}{s}
- [Tele]phone{s}
- Toilet bowl exterior{s}
- Urinal{s} exterior{s}
- Wading Pool{s}
- Water -and/or- Drinking Fountain [Toggle{s}]
- Vanity top{s}
- Vinyl Tile
- Wheelchair{s}

Table 2 Use Sites

- [Air]plane ~~-or-~~ Plane [Lavatory ~~-or-~~ Lavatories]
- Ambulance{s}
- Automobile{s} ~~-or-~~
- Basements
- Bathrooms
- Bedroom{s}
- Birdbath{s}
- Blood Banks
- Boats
- Bowling Alley{s}
- Businesses
- Butcher Shop{s}
- Cafeteria{s}
- Camper{s} ~~-or-~~ RV ~~-or-~~ Trailer ~~-or-~~ Mobile Home
- Campground
- Car{s}
- Children's -or- Child's -or- Kids' [Play] Room
- Churches
- [College] {dorm} ~~-or-~~
- Common [Classroom -and/or- School -and/or- Play] Areas
- Day-Care Center{s}
- [Dental -or- Medical] Office{s}
- [Dentist's -or- Doctor's -or- Physician's] Office{s}
- Dining Rooms
- Dormitory{ies}
- Dorm [room]
- ~~dorm [room]~~
- Dumpster{s}
- Elder Care Centers
- [Elementary] School -or- College -or- University
- Exhaust Fan{s}
- Factory ~~-or-~~ Plant{s}
- Family Room{s}
- Fitness Center{s}
- Food Serving Area{s}^P
- Garage{s}
- Garbage Can{s}
- Grocery Store{s}
- Gym{nasium} {s}
- Health Care Facility{ies}
- Health Club{s}
- High-touch areas
- Hospital{s}
- Hotel{s}
- House[boat]s
- Industrial Facility{ies}
- [Institutional] Kitchen{s}
- Jungle Gym{s}
- Kennel{s}
- ~~Kitchen~~
- Lab{oratory}ie{s}
- Laundromat{s}
- Laundry Room{s}
- Living Room{s}
- Locker Rooms
- Medical -or- Dental -or- Physician's -or- Doctor's -or- Nurse's -or- Pediatrician's [Office{s}] [Waiting Room{s}] [Exam{ination} Room{s}] ~~-or-~~ Table{s}
- [Medical] Clinic{s}
- Military Installation{s}
- Mobile Home{s}
- Motel{s}
- Motorboat{s} -or- House boat{s}
- Nursery{ies}
- Nursing Home{s} -or- Convalescent Home{s} -or- Senior [Citizen's] Home{s}
- Office{s}
- Patio{s} ~~-or-~~
- Pet -or- Cat -or- Dog Area{s} -and/or- Dog Run{s}
- Pharmacy{ies}
- Playground Equipment
- Porches
- Recreational Center{s} -or- Facility{ies}
- Restaurant{s}
- Restroom{s}
- RV{s}
- School{s}
- [School -or- City -or- Public Transit -or- Commuter] Buses
- Shelter{s}
- Supermarket{s}
- Trailer{s}
- Train Interior{s}
- Vehicle {Interior} ~~-and/or-~~ Exterior{s}
- Veterinary Clinic{s}

Table 3 Surface Materials

- Chrome
- Corian[®][λ]
- Enamel
- Fiberglass
- Formica[®][λλ]
- [Glazed] Porcelain¹⁶
- ~~Laminate~~
- Linoleum
- Marlite[®][λλλ]
- Metal
- Plastic
- [Plastic] Laminate
- Porcelain
- Resilient Flooring
- Finished -or- Sealed [hard]
- wood^{μμ} -or- Sealed Fiberglass
- Sealed Granite
- Stainless Steel
- Synthetic -or- Cultured Marble

- Prolonged contact with metal, old porcelain or worn plastic laminate may cause discoloration.
- [Avoid contact with clothes, fabric, unfinished wood, rubber, painted and paper surfaces. Do not use on steel, aluminum, silver or chipped enamel.
APPLY CAREFULLY - This product contains bleach.]

Table 4 Stains/Soils

- | | |
|--|---|
| <ul style="list-style-type: none"> bathroom dirt -and/or- soils -and/or- stains bathtub ring coffee crayon marks fingerprints food -and/or- juice -and/or- coffee -and/or- tea -and/or- stuck-on
-and/or- mold stains grease [greasy] dirt grime | <ul style="list-style-type: none"> hard water deposits heel marks ketchup mineral deposits pencil marks soap scum toilet ring [tough -and/or- greasy] -and/or- [kitchen] dirt wine |
|--|---|

Disclosure Information

[Contains] Sodium hydroxide [CAS # 1310-73-2]

Footnotes

- [1] This strain of Multi-drug Resistant Acinetobacter baumannii has shown resistance to the following antibiotics: Gentamicin and Trimethoprim/Sulfa
- [2] This strain of Multi-drug Resistant Enterobacter aerogenes has shown resistance to the following antibiotics: Ampicillin, Ampicillin/Sulbactam and Cefazolin]
- [3] This strain of Multi-drug Resistant Enterococcus faecium has shown resistance to the following antibiotics: Ampicillin, Penicillin and Gentamicin]
- [4] This strain of Multi-drug Resistant Klebsiella pneumoniae has shown resistance to the following antibiotics: Ampicillin, Ampicillin/Sulbactam, Cefazolin, Cefepime, Ceftazidime, Ceftriaxone, Gentamicin, Piperacillin/Tazo and Trimethoprim/Sulfa]
- [5] This strain of Multi-drug Resistant Staphylococcus aureus has shown resistance to the following antibiotics: Clindamycin, Erythromycin, Penicillin and Tetracycline]
- ⁸ Trichophyton interdigitale **tested as Trichophyton mentagrophytes**
- ⁹ Use-Dilution **data supports full strength**
- ¹⁰ Use Dilution 1/2 cup per 1 gal[on] water
- ¹¹ 5 min[ute] **contact time for spray application**
- ¹² Spray and undiluted applications only
- ¹³ Escherichia coli
- ¹⁴ Salmonella enterica
- ¹⁵ Staphylococcus aureus
- ¹⁶ Avoid prolonged contact with porcelain
- ¹⁷ Rhinovirus -or- **spray only** Human Coronavirus, Influenza A2 virus
- ¹⁸ when disinfection use directions are followed
- * [when compared to] [vs.] 32 fl oz Clorox[®] Clean-Up Cleaner with Bleach trigger [spray] in most stores, based on average retail price -and/or- volume 50% less plastic vs. five -or- 5 32 fl oz trigger sprays **180 oz bottle** -or- 55% less plastic vs. four -or- 4 32 fl oz trigger sprays **136 oz bottle** -or- 56% less plastic vs. four -or- 4 32 fl oz trigger sprays **128 oz bottle** -or- 46% less plastic vs. two -or- 2 32 fl oz trigger sprays **64 oz bottle** -or- 28% less plastic vs. one -or- 1 32 fl oz trigger spray **32 oz bottle** -or- ___% less plastic vs. **insert # of bottles** fl oz trigger spray
- based on average volume per month usage cycle
- ◇ {(as Feline Calicivirus)}
- ◇◇ {(as duck HBV)}
- ◇◇◇ {(as Bovine viral diarrhea virus)}
- †† **tested as Salmonella choleraesuis**
- § Kills Avian Influenza A on precleaned hard, nonporous surfaces
- ‡ [Viruses]
- ‡‡ Bloodborne Pathogens
- ‡‡‡ Based on lab testing [on Kitchen Grease] compared to -or- vs. previous offering
- vs. our previous version **insert number based on organisms from label**
- ^P [on] hard, nonporous surfaces [of]
- §§ Rhinovirus -or- **spray only** Human Coronavirus
- §§§ Influenza A2 virus
- ∂∂ Methicillin resistant Staphylococcus aureus
- ^{PP} vs. a Clorox[®] non-bleach cleaner
- ^ℓ experience compared to historical Clorox[®] spray packaging
- ^{ℓℓ} Pet dander, dust mite matter -or- particles[, cockroach matter -or- particles]
- ^{ℓℓℓ} Staphylococcus aureus [(Staph)], Klebsiella pneumoniae (Kleb)
- [λ] Corian[®] is a [registered] trademark of [E. I. du Pont de Nemours and Company] [a subsidiary of] [E. I. du Pont de Nemours and Company] [or one or more of its affiliates].
- [λλ] Formica[®] is a [registered] trademark of [The Diller Corporation] [a subsidiary of] [Formica] [Formica Corporation] [or one or more of its affiliates].
- [λλλ] Marlite[®] is a [registered] trademark of [Marlite, Inc.] [a subsidiary of] [Marlite, Inc.] [or one or more of its affiliates].
- ^{μμ} Do not allow puddles of product to remain on surface. Do not use on unsealed, unfinished, visibly worn, oiled or waxed wood surfaces. Product can discolor wood surfaces if misused. Test a small area first.