

67619-17

6/6/2012

10 of 14



UNITED STATES ENVIRONMENTAL PROTECTION AGENCY
WASHINGTON D C 20460

OFFICE OF CHEMICAL SAFETY
AND POLLUTION PREVENTION

June 6, 2012

J Evelyn Lawson
Federal Registration Specialist
Clorox Professional Product Company
c/o PS&RC, P.O. Box 493,
Pleasanton, CA 94566-0803

Subject Shield
EPA Reg# 67619-17
Notification Date May 17, 2012
Receipt Date May 21, 2012

Dear Ms Lawson

This acknowledges the receipt of your notification, submitted under the provision of PR Notice 98-10 and FIFRA section 3(c)9

Proposed Notification

Addition of an EPA Est No (p 1), a bracketed packaging related statement (p 2) and updated ingredient disclosure website (p 1) for "Shield" product (EPA Reg#67619-17)

General Comment

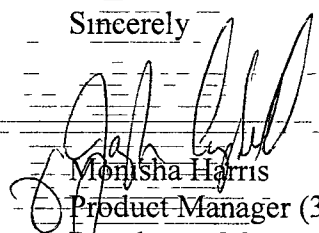
Based on the review of the material submitted, the notification application for these minor addition and changes is acceptable

Please note that if you still wish to retain a reference to the company's website on your label, then please be aware that such a reference transforms the website into labeling under the Federal Insecticide Fungicide and Rodenticide Act sec 2 (p) (2) and then the website is subject to review by the Agency. If the website content is false or misleading, the product would be misbranded and its sale or distribution unlawful to sell or distribute under FIFRA section 12(a)(1)(E). In addition, regardless of whether a website is referenced on your product's label, claims made on the website may not substantially differ from those claims approved through the registration process. Although EPA has not yet determined the extent to which it will routinely review company websites, if the Agency finds or if it is brought to our attention that a website contains false or misleading statements or claims substantially differing from claims approved through the registration process, the website may be referred to the EPA's Office of Enforcement and Compliance Assurance

This notification and this letter have been inserted in your file for future reference

If you have further question on this letter, please contact David Liem at liem david@epa gov or 703-305-1284

Sincerely



Monisha Harris
Product Manager (32)
Regulatory Management Branch II
Antimicrobials Division (7510P)



United States
Environmental Protection Agency
Washington DC 20460

Registration
 Amendment
 Other

OPP Identifier Number
EL0437

Application for Pesticide - Section I

1 Company/Product Number 67619 17	2 EPA Product Manager Monisha Harris	3 Proposed Classification <input type="checkbox"/> None <input type="checkbox"/> Restricted
4 Company/Product (Name) Shield	PM# 32	
5 Name and Address of Applicant (Include ZIP Code) Clorox Professional Products Company c/o PS&RC P O Box 493 Pleasanton CA 94566-0803 <input type="checkbox"/> Check if this is a new address	6 Expedited Review In accordance with FIFRA Section 3(c)(3) (b)(i) my product is similar or identical in composition and labeling to EPA Reg No _____ Product Name _____	

Section - II

<input type="checkbox"/> Amendment Explain below	<input type="checkbox"/> Final printed labels in response to Agency letter dated _____
<input type="checkbox"/> Resubmission in response to Agency letter dated _____	<input type="checkbox"/> Me Too Application
<input checked="" type="checkbox"/> Notification Explain below	<input type="checkbox"/> Other Explain below

Explanation Use additional page(s) if necessary (For section I and Section II)

Notification to add non mandatory label text per PR Notice 98 10 We have added one EPA Est No (p x) updated ingredient disclosure website (p 1) and bracketed packaging related statements (p 2) We send one strike out/underlined label and 5 clean labels This notification is consistent with the provisions of PR Notice 98 10 and EPA regulations at 40 CFR 152 46 and no other changes have been made to the labeling or the confidential statement of formula of this product I understand that it is a violation of 18 U S C § 1001 to willfully make any false statement to EPA I further understand that if this notification is not consistent with the terms of PR Notice 98 10 and 40 CFR 152 46 this product may be in violation of FIFRA and I may be subject to enforcement action and penalties under § 12 and § 14 of FIFRA

Section - III

1 Material This Product Will Be Packaged In				2 Type of Container	
Child Resistant Packaging <input type="checkbox"/> Yes <input type="checkbox"/> No	Unit Packaging <input type="checkbox"/> Yes <input type="checkbox"/> No	Water Soluble Packaging <input type="checkbox"/> Yes <input type="checkbox"/> No	If Yes Unit Packaging wgt No per container		<input type="checkbox"/> Metal <input type="checkbox"/> Plastic <input type="checkbox"/> Glass <input type="checkbox"/> Paper <input type="checkbox"/> Other (Specify) _____
* Certification must be submitted		If Yes Package wgt No per container			
3 Location of Net Contents Information <input type="checkbox"/> Label <input type="checkbox"/> Container		4 Size(s) Retail Container		5 Location of Label Directions	
6 Manner in Which Label is Affixed to Product <input type="checkbox"/> Lithograph <input type="checkbox"/> Paper glued <input type="checkbox"/> Stenciled			<input type="checkbox"/> Other _____		

Section - IV

1 Contact Point (Complete items directly below for identification of individual to be contacted if necessary to process this application)		
Name J Evelyn Lawson	Title Federal Registration Specialist	Telephone No (include Area Code) (925) 425 6812
Certification I certify that the statements I have made on this form and all attachments thereto are true accurate and complete I acknowledge that any knowingly false or misleading statement may be punishable by fine or imprisonment or both under applicable law		6 Date Application Received (Stamped)
2 Signature <i>J Evelyn Lawson</i>	3 Title Federal Registration Specialist	
4 Typed Name J Evelyn Lawson	5 Date May 18 2012	

Shield



NOTIFICATION
Data Reviewed *gela*
Reviewed By *al her*

Active Ingredient	
Sodium Hypochlorite	1.84%
Other Ingredients	98.16%
Total	100.00%

[(Yields 1.75% available chlorine)]
(17,480 PPM (Parts Per Million) Available Chlorine)

KEEP OUT OF REACH OF CHILDREN

WARNING:

EYE AND SKIN IRRITANT

For Spray Product USE ONLY IN WELL VENTILATED AREAS

See back label for additional precautionary statements

NET CONTENTS _____

Contains no phosphorus

Clorox Customer Assistance 1 888 797 7225 Any Questions? The experts at Clorox are standing by to answer any of your questions or Questions or Comments? Call [toll free] 1 888 797 7225 Satisfaction Guaranteed[!] At Clorox we have prided ourselves in making consistent quality products [for over 95 or ___ years] and we are dedicated to ensuring your total satisfaction with our product. If you are not completely satisfied please call the number below or 1 888 797 7225 For MSDS information please go to www.cloroxprofessional.com

A list of this product's ingredients is available at www.CloroxCSR.com www.IngredientsInside.com or
A list of [this product's] [**product name**] ingredients is available at [**insert company website**]
Mfd for & © YYYY Clorox Professional Products Company 1221 Broadway Oakland CA 94612
Commercial Solutions is a registered trademark of Clorox Professional Products Company
Clorox [and Clean Up] is a or are registered trademark[s] of The Clorox Company Made in the USA
EPA Reg No 67619 17 EPA Est No 5813 CA 3 (A8) GA 1 (A4) GA 2 (VG) IL 2 (VF) 71681 CA 1 (JG)
IL 1 (GU) IL 2 (24) (JQ)

Beginning of batch code indicates Est No
For dilutable PATENT USD 280 602 For Spray U S DES PAT 265 887
Visit us at www.cloroxprofessional.com



PRECAUTIONARY STATEMENTS Hazards to Humans & Domestic Animals

WARNING EYE AND SKIN IRRITANT Causes substantial but temporary eye injury Do not get in eyes or on clothing Avoid contact with skin Wear protective eyewear [such as goggles or safety glasses] Wash thoroughly with soap and water after handling and before eating drinking chewing gum or using tobacco Remove and wash contaminated clothing before reuse Harmful if swallowed For sensitive skin or prolonged use wear gloves Vapors may irritate Avoid prolonged breathing of vapors Use only in well ventilated areas **[Not recommended for use by persons with heart conditions or chronic respiratory problems such as asthma emphysema or obstructive lung disease] (this statement will appear in color)**

FIRST AID

IF IN EYES Hold eye open and rinse slowly and gently with water for 15 20 minutes Remove contact lenses if present after the first 5 minutes then continue rinsing eye Call a poison control center or doctor for treatment advice **IF ON SKIN OR CLOTHING** Take off contaminated clothing Rinse skin immediately with plenty of water for 15 20 minutes Call a poison control center or doctor for treatment advice **IF BREATHING IS AFFECTED** Move person to fresh air If person is not breathing call 911 or an ambulance then give artificial respiration preferably mouth to mouth if possible **IF SWALLOWED** Call a poison control center or doctor immediately for treatment advice Have person sip a glassful of water if able to swallow Do not induce vomiting unless told to do so by a poison control center or doctor Do not give anything by mouth to an unconscious person Call a poison control center or doctor for further treatment advice Have the product container or label with you when calling a poison control center or doctor or going for treatment

PHYSICAL AND CHEMICAL HAZARDS This product contains bleach Do not use or mix this product with other [household] chemicals such as ammonia, toilet bowl cleaners rust removers or acid as this releases hazardous gases

Professional/Institutional uses (32 fl oz RTU Spray)
(Refillable bottles intended to be refilled by the consumer)

STORAGE AND DISPOSAL

Store this product in a cool [dry] area [away from direct sunlight and heat] to avoid deterioration Do not reuse or refill except as described in the directions for use Refill only with this product [Please] recycle empty container or discard in trash

Professional/Institutional uses (32 fl oz RTU Spray)
(Bottles not intended to be refilled by the consumer)

STORAGE AND DISPOSAL

Store this product in a cool [dry] area [away from direct sunlight and heat] to avoid deterioration Nonrefillable container Do not reuse or refill container [Please] recycle empty container or discard in trash

Professional/Institutional uses (64 fl oz 128 fl oz Direct application/dilutable non spray)
(Nonrefillable bottles)

STORAGE AND DISPOSAL

Store this product in a cool [dry] area [away from direct sunlight and heat] to avoid deterioration In case of spill flood areas with large quantities of water Product or rinsates that cannot be used should be diluted with water before disposal in a sanitary sewer Nonrefillable container Do not reuse empty container [Triple rinse promptly then] [please] recycle empty container or discard in trash

Packaging Related Statements and Icons

[Padlock icon unlocked and locked (on bottle shrink) with corresponding arrow (molded into trigger)



To refill Turn trigger on spray bottle [1/8th turn] counterclockwise [and pull upwards] to remove [After refilling spray bottle] Replace trigger by aligning tube on trigger with [opening] [tube] inside bottle [and turn clockwise] [] [while pushing down] [and/or push [sprayer] [straight] down [until it clicks]] and/or locks into place]]

- When almost empty -or To spray every drop tilt bottle downward or at a downward angle [while spraying]
- [To foam (close screen on nozzle) or spray (open screen on nozzle)]

Packaging Related Statements and Icons Continued

**[Refill only with this product]
Alternate for Refill Bottle
To Refill [Spray Bottles]**

[Remove]

1 Remove trigger sprayer or cap [from empty bottle]

[Pour]

2 Unscrew cap on refill and pour contents directly into empty bottle

[Use]

3 Replace trigger sprayer [and use as you normally would]

or

[Remove trigger sprayer from empty bottle] unscrew cap and transfer your trigger to this bottle

DIRECTIONS FOR USE It is a violation of Federal law to use this product in a manner inconsistent with its labeling

For all products USE ONLY IN WELL VENTILATED AREAS

Before use open windows and/or turn on fan(s) If vapors bother you leave room while product is working

CLEANING, DEODORIZING, STAIN REMOVAL

[How] to clean and/or deodorize and/or remove stains

- **Full strength or diluted use** Use full strength or mix 1/2 cup [(4 oz)] or 1 cup [(8 oz)] of this product in or- with 1 gallon [warm] water Apply directly with [damp] sponge or mop or cloth or rag [Rinse or wipe clean] [Allow to air dry]
- **Floors** Mop floor with 1 cup [(8 oz)] of this product mixed in 1 gallon of water Rinse for best shine [Avoid accidents Floors and surfaces may be slippery when wet]
- **Toilet bowls** Flush toilet and add 3/4 cup [(6 oz)] of this product to bowl water Brush thoroughly to wet all surfaces including under the rim Let stand 5 minutes before flushing

- **Spray application** [Turn nozzle [counter]clockwise to open or Rotate nozzle to FOAM or SPRAY] Spray [directly] onto surface [Rinse or wipe clean] [Allow to air dry] or Spray 6 8 inches from the surface and allow product to penetrate tough stains and messes Wipe with a wet sponge or cloth and rinse with water No scrubbing required For stronger jobs use FOAM option Spray and let product stand on surface for several minutes before wiping

Claims (for cleaning, deodorizing stain removal)

- Brightens
- Cleans and removes stains from washable floors
- Cleans everyday kitchen messes like dirt grease and food stains
- Cleans tough messes
- Cuts through [tough] grease and grime
- Degreaser or Degreases
- Deodorizes
- Deodorizes and has a clean fresh scent or fragrance
- Eliminates food odors like garlic and onion left behind in or on surfaces
- Eliminates odors caused by bacteria or germs or mildew
- Leaves [kitchen] [bathroom] surfaces [clean and] sanitary
- One step cleaner
- Removes food stains
- Removes odors

- Removes and/or cleans and/or bleaches [out] and/or cuts through and/or tough on [tough] stains
 - bathroom dirt and/or stains
 - bathtub ring
 - food and/or juice and/or coffee and/or tea grime
 - hard water deposits
 - mineral deposits
 - soap scum
 - toilet ring
 - [tough] and/or [greasy] and/or [kitchen] dirt
- Removes stains on contact
- Removes tough stains or messes or greasy dirt
- Removes tough stains fingerprints bathroom scuffs crayon marks heel marks pencil marks grease and dirt
- Whitens
- Wipes out stains in kitchen and bath

Use Sites See Table One

SANITIZATION

To [clean] [and] sanitize

• **Direct application or full strength use** Directly apply [this product] with cloth or sponge or mop or rag and wet surfaces completely Let stand 5 minutes [Rinse or wipe clean] [Allow to air dry] For heavily soiled surfaces preclean surface before sanitizing

or
• **Spray application** [Turn nozzle [counter]clockwise to open] Spray product 4 6 inches from surface until thoroughly wet Let stand 30 seconds [Rinse or wipe clean] [Allow to air dry] For heavily soiled surfaces preclean surface before sanitizing

or
• **Diluted** Mix 1/2 or 1 cup [this product] per gallon [warm] [soft] water Wet surface completely with cloth or sponge or mop or rag Let stand 5 minutes Rinse or wipe clean [Allow to air dry] For heavily soiled surfaces preclean surface before sanitizing

Organisms

Staphylococcus aureus [(Staph)] [ATCC 6538] Klebsiella pneumoniae [ATCC 4352]

Claims

- Leaves surfaces sanitized
- Sanitizes surfaces
- Pour down garbage disposal to sanitize and deodorize

Use Sites See also Table One

Use [throughout the house] on hard nonporous surfaces [such as]

- | | |
|---------------------|---------------------------|
| Bird Bath[s] | Pet or Cat or Dog Area[s] |
| Dumpster[s] | Pet or Cat or Dog Run[s] |
| Exhaust Fan[s] | [Picnic] Table[s] |
| Garbage Can[s] | Recycling Bin[s] |
| Garbage Disposal[s] | Trash Can[s] |
| Kennel[s] | Trash Compactor[s] |

DISINFECTION

To [clean and] disinfect [hard nonporous surfaces]

• **Spray application** [Turn nozzle [counter]clockwise to open or Rotate nozzle to FOAM or SPRAY] Spray product 4 6 inches from surface until thoroughly wet Let stand 30 seconds or longer if noted [Rinse or wipe clean] [Allow to air dry] or Spray 6 8 inches from the surface and allow product to penetrate tough stains and messes Let stand 30 seconds or longer if noted Wipe with a wet sponge or cloth and rinse with water No scrubbing required For heavily soiled surfaces preclean surface before disinfecting

or
• **Diluted or light use** Mix 1/2 cup [(4 oz)] [of this product] per gallon [warm] [soft] water or Floors Mix 1 cup [(8 oz)] [of this product] per gallon [warm] [soft] water Wet surface completely with cloth or sponge or mop or rag Let stand 5 minutes [Rinse or wipe clean] [Allow to air dry] For heavily soiled surfaces preclean surface before disinfecting [Avoid accidents Floors and surfaces may be slippery when wet]

or
• **Direct application or full strength use** Directly apply [this product] with cloth or sponge or mop or rag and wet surfaces completely Let stand 5 minutes [Rinse or wipe clean] [Allow to air dry] For heavily soiled surfaces preclean surface before disinfecting

or
• **For toilet bowls** Flush toilet and add 3/4 cup [(6 oz)] [of this product] to bowl water Brush thoroughly to wet all surfaces including under the rim Let stand 5 minutes before flushing
or
• **Food Contact Surfaces** A potable water rinse is required after disinfection

DISINFECTION Continued

Pandemic 2009 H1N1 Influenza A virus***

Claims

- Respiratory illnesses attributable to Pandemic 2009 H1N1 are caused by influenza A virus. This product (**Product Name**) is a broad spectrum hard surface disinfectant that has been shown to be effective against influenza A2 virus and is expected to inactivate all influenza A viruses including Pandemic 2009 H1N1 (formerly called swine flu)
- This product has demonstrated effectiveness against influenza A2 virus and is expected to inactivate all influenza A viruses including Pandemic 2009 H1N1 influenza A virus
- This product has demonstrated effectiveness against influenza A2 virus and is expected to inactivate all influenza A viruses including Pandemic 2009 H1N1 (formerly called swine flu)
- Kills Pandemic 2009 H1N1 influenza A virus (formerly called swine flu)
- Kills Pandemic 2009 H1N1 influenza A virus

*** per Agency guidance dated October 22 2009 "Guidance for Testing and Labeling Claims against Pandemic 2009 H1N1 Influenza A Virus (formerly called Swine Flu)" www.epa.gov/oppad001/h1n1_guide.html

- Kills [2009] H1N1 [Flu Virus]
- Kills Germs and/or Flu Viruses [including [2009] H1N1]
- Kills [99.9% of] Germs including [2009] H1N1 [Flu Virus]
- Effective against [2009] H1N1 [Flu Virus]

Organisms

[Kills] [99.9% of common household] germs on hard nonporous surfaces

Bacteria

- Acinetobacter baumannii [ATCC 15308]*
- Community Associated Methicillin resistant Staphylococcus aureus [CA MRSA] [NARSA NRS123] [Genotype USA 400]*
- Community Associated Methicillin resistant Staphylococcus aureus [CA MRSA] [NARSA NRS384] [Genotype USA 300]*
- ESBL (Extended Spectrum Beta Lactamase) producing Escherichia coli (ESBL producing E coli) [ATCC BAA 196]*
- Escherichia coli [(E coli 0157 H7)] [ATCC 35150]*
- Listeria monocytogenes [(Listeria)] [ATCC 19117]*
- Methicillin resistant Staphylococcus aureus [(MRSA)] [ATCC 33591]*
- Pseudomonas aeruginosa [(Pseudomonas)] [ATCC 15442]*
- Salmonella enterica (**tested as Salmonella choleraesuis**) [(Salmonella)] [ATCC 10708]*
- Shigella dysenteriae [(Shigella)] [ATCC 13313]*
- Staphylococcus aureus [(Staph)] [ATCC 6538]*
- Streptococcus pneumoniae [(Strep)] [ATCC 6305]*
- Streptococcus pyogenes [(Strep)] [ATCC 19615]*
- Vancomycin resistant Enterococcus faecalis [(VRE)] [ATCC 51299]*

Viruses Non enveloped

- Adenovirus [type 2] [ATCC VR 846]* [(Strain Adenoid 6)] [(common cause of respiratory infections)]
- Coxsackievirus [B3] [(Coxsackie)] [ATCC VR 30] [Strain Nancy]*
- [Human] Hepatitis A [Virus] [(HAV)] [HAV 1]*
- Norovirus or Norwalk virus [(as Feline Calicivirus)] [ATCC VR 782]†
- Poliovirus type 1 [(Chat Strain)] [ATCC VR 1562]†
- Rotavirus [(Strain WA)] [(associated with viral diarrhea)]*

Viruses Enveloped

- Avian Influenza A [ATCC VR 2072 Strain A/Washington/897/80 X A/ Mallard/New York/6750/78]* or Turkey/Wis/66 (H9N2) SPAFAS)‡
- HIV type 1 [RF strain]††
- [Human] Hepatitis B [Virus] [(HBV)] [(as duck HBV)] [DHBV16]*
- [Human] Hepatitis C [Virus] [(HCV)] [(as Bovine viral diarrhea virus)] [ATCC VR1422]**
- [Human] Influenza [(Influenza A2)] [(Hong Kong)] [ATCC VR 544]*
- [Human] Parainfluenza 1 virus [(Sendai)] [ATCC VR 907]*
- Rhinovirus [ATCC VR 1110]*

Bloodborne Pathogens

- HIV type 1 [RF strain]††
- [Human] Hepatitis B [Virus] [(HBV)] [(as duck HBV)] [DHBV16]*
- [Human] Hepatitis C [Virus] [(HCV)] [(as bovine viral diarrhea virus)] [ATCC VR 1422]**

Mold, Mildew, Fungi

- Aspergillus niger [(mildew)] [ATCC 6275]†††
- Trichophyton mentagrophytes [(Athlete's Foot Fungus)] [CDC y 68+]***†††

- † 1 min[ute] contact time for spray applications
- †† 2 min[ute] contact time for spray applications
- * 30 sec[onds] contact time for spray applications
- ††† 5 min[ute] contact time for spray applications
- ** Spray and undiluted applications only
- ‡ Kills Avian Influenza A on pre-cleaned environmental surfaces

Use Sites See Table One

DISINFECTING AGAINST AVIAN INFLUENZA A VIRUS

FARM PREMISE AND POULTRY HOUSE DISINFECTANT (INSTRUCTIONS)

[Directions For Use]

- 1 Remove all poultry or animals and feeds from premises trucks vehicles coops crates and enclosures
- 2 Remove all litter and manure or droppings from floors walls and surfaces of barns pens stalls chutes and other facilities and fixtures occupied or traversed by animals or poultry
- 3 Empty all troughs racks and other feeding and watering appliances
- 4 Thoroughly clean all surfaces with soap or detergent and rinse with water
- 5 Saturate all surfaces with the recommended disinfecting solution for a period of 5 minutes (direct application or dilute use) or 30 seconds (spray application)
- 6 Immerse all halters ropes and other types of equipment used in handling and restraining animals as well as forks shovels and scrapers used for removing litter and manure
- 7 Ventilate buildings cars boats coops and other closed spaces Do not house livestock or poultry or employ equipment until treatment has been absorbed set or dried
- 8 Thoroughly scrub all treated feed racks mangers troughs automatic feeders fountains and waterers with soap or detergent and rinse with potable water before reuse

Organism

Avian Influenza A [ATCC VR 2072] -or- Turkey/Wis/66 (H9N2) SPAFAS) [Strain A/Washington/897/80 X A/Mallard/New York/6750/78]*‡ ‡ Kills Avian Influenza A on precleaned environmental surfaces

Specific instructions for use of all (spray and dilutable) This Product protects against (HIV 1) (HBV) and (HCV)

To kill HIV 1 HBV and HCV

This product kills HIV 1 HBV and HCV on precleaned environmental surfaces/objects previously soiled with blood/body fluids in health care settings (e.g hospitals nursing homes) or other settings in which there is an expected likelihood of soiling of inanimate surfaces/objects with blood or body fluids and in which the surfaces/objects likely to be soiled with blood or body fluids can be associated with the potential for transmission of Human Immunodeficiency Virus Type 1 (HIV 1)(associated with AIDS) Human Hepatitis B Virus (HBV) and Human Hepatitis C Virus (HCV)

Special instructions for using this product to clean and decontaminate against HIV 1, HBV and HCV on surfaces/objects soiled with blood/body fluids

Personal protection When handling items soiled with blood or body fluids use disposable latex gloves, gowns, masks, and eye coverings

Cleaning procedure Blood and other body fluids must be thoroughly cleaned from surfaces and other objects before applying this product Disposal of infectious materials Use disposable latex gloves gowns masks and eye coverings Blood and other body fluids should be autoclaved and disposed of according to local regulations for infectious waste disposal

Contact time Dilute product 1:32 Spray or flood surface Let stand 5 minutes [Rinse or wipe clean] [Allow to air dry]

For spray product Wet surface and let stand 2 minutes [Allow to air dry]

The following is only for products with medical devices listed on label [located by cautionary text]

This product is not to be used as a terminal sterilant/high level disinfectant on any surface or instrument that (1) is introduced either into the human body either into or in contact with the bloodstream or normally sterile areas of the body or (2) contacts intact mucous membranes but which does not ordinarily penetrate the blood barrier or otherwise enter normally sterile areas of the body This product may be used to preclean or decontaminate critical or semi critical medical devices prior to sterilization or high level disinfection

ALLERGEN DESTRUCTION OF DUST MITE AND COCKROACH MATTER/PARTICLES AND PET DANDER

To [clean and] destroy specified allergens

- **Full strength** Apply undiluted product directly to sponge or cloth -or rag or mop Wet surface completely Let stand 5 minutes [Rinse or wipe clean] [Allow to air dry]
- **Spray application** [Turn nozzle [counter]clockwise to open or Rotate nozzle to FOAM or SPRAY] Spray product 4 6 inches from surface until thoroughly wet Let stand 3 minutes [Rinse or wipe clean] [Allow to air dry]

Allergens

- Dust mite matter -or particles
- Cockroach matter or particles
- Pet dander

Claims

- [Breaks down] [Deactivates] [Destroys] [Penetrates] [Reduces] dust mite matter or particles cockroach matter or particles and pet dander allergens found in dust
- [Breaks down] [Deactivates] [Destroys] [Penetrates] [Reduces] [household] dust mite matter or particles cockroach matter or particles and pet dander allergens
- This product cleans destroys dust mite matter or particles cockroach matter or particles pet dander while cleaning hard nonporous surfaces such as sinks counters refrigerators appliances fiberglass and tubs

Use Sites See Table One

FUNGI AND MOLD AND MILDEW

To [clean and] kill fungi and/or mold and/or mildew on [hard] [nonporous] surfaces

- **Full strength** Apply product directly to surface or with cloth or sponge or mop or rag and wet surfaces completely Let stand 5 minutes [Rinse -or wipe clean] [Allow to air dry] For heavily soiled surfaces preclean surface before disinfecting
- or
- **Spray application** [Turn nozzle [counter]clockwise to open or Rotate nozzle to FOAM or SPRAY] Spray product 4 6 inches from surface until thoroughly wet Let stand 5 minutes [Rinse or wipe clean] [Allow to air dry] For heavily soiled surfaces preclean surface before disinfecting

Claims

- Kills mold and mildew
- Kills Athlete s Foot Fungus
- Mildewcidal or Mildewcide
- Fungicidal or Fungicide
- Removes and/or cleans and/or bleaches out and/or cuts through and/or tough on mold and/or mildew
- Removes and/or bleaches out mold and mildew stains
- Antifungal

Organisms

Trichophyton mentagrophytes (Athlete s Foot Fungus) [CDC y 68+] Aspergillus niger (mildew) [ATCC 6275]

Use Sites See Table One

GENERAL CLAIMS

New [and or & Improved][!] *to be used as a claim descriptor only for the first 6 months of product on shelf*

- Bleach for kitchen and bath
- Citrus Blend
- [Citrus] [fresh] [floral] [pleasant] scent or fragrance
- [Citrus] [Fresh] [Natural] Breeze
- Citrus Zest
- Cleans [dirty floors] greasy counter[top]s
- Contains sodium hypochlorite plus a cleaner
- [Easily] removes or cleans tough bathroom and/or restroom and/or kitchen and/or household and/or office and/or workplace [dirt] [soils] [grime] [soap scum] [!]
- For a cleaner and/or fresher [bathroom] [restroom] [kitchen] [home] [house] [place] [work or office place] [work or office environment]
- Fresh Mist
- Freshens [the] [your] [bathroom] [restroom] [kitchen] [home] [house] [place] [work or office place] [work or office environment]
- [Has] [Leaves] a clean scent or fragrance
- Makes [cleaning] [your job] easier [in the kitchen and/or bathroom and/or house] [in the work or office place] [at work]
- Patented design bottle
- Pleasant fragrance
- Power of bleach [without the] [strong] smell
- [Removes] [Eliminates] [Gets rid of] [Melts away] tough [soap scum] [[bathroom and/or restroom and/or kitchen and/or household and/or office and/or workplace] [dirt] [soils] [grime]] [!]
- The [convenient] [easy] [effective] way to keep your [home] [house] [bathroom] [kitchen] [common areas] [office] [work or office] [area] [place] [environment]] looking just cleaned
- The smell of clean
- Tough on grime and/or soap scum -and/or dirt and/or- [other] [tough] [bathroom or restroom] [kitchen] [household] [office] [work or office place] soils[!]
- Ultra Fresh

Environmental Claims

- [This product is] suitable for septic [systems] and/or wastewater systems or treatment plants
- Not harmful to septic systems
- This product complies with consumer product volatile organic compound (VOC) laws

Specific for Industrial product

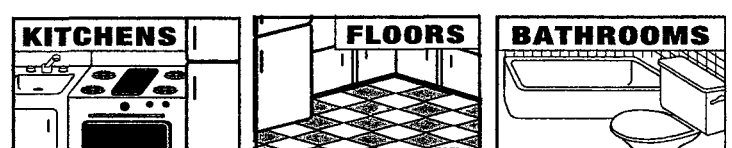
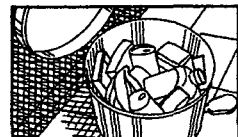
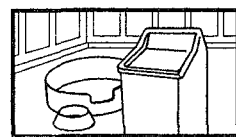
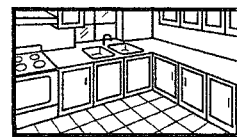
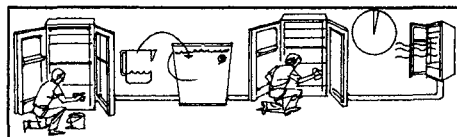
- Institutional Size
- Industrial Size
- Not for Household Use
- Warehouse [Club] Size
- Commercial Solutions

Specific for spray and refill packages

- Accurate aim trigger [option] [for better] [bleach] control]
- All Purpose -or Multi Purpose or- Multi Use or Multi Room or Multi Surface [Spray] Cleaner [with bleach]
- All Spray or Easy Spray or Empt Ease or Reliaspray or Spray All [Bottle] [Technology]
- Anti foam or anti suds nozzle
- [Bathroom] [Kitchen] Spray
- Better aim [for better] [bleach] control]
- Bleach what you want to bleach and nothing more!
- Concentrated [foaming] spray action [for better] [bleach] control]
- Controlled bleach spray
- Direct [spray] [aim] trigger [option] [for better] [bleach] control]
- Dual control [nozzle] [trigger] [option for better] [bleach] control] [spray and foaming option]
- Easy Drop Delivery
- Economy refill [size]
- Foam quickly cuts grease marks and tough stains
- Foaming [action] [spray] stays where you spray
- Foaming trigger [option] [for more accurate] [bleach] application]
- Foaming [trigger] [spray] [nozzle] option [for better] [bleach] control]
- Foaming stays where you spray
- Foaming or- sudsing nozzle
- Get or Spray Every Drop[!]
- Last Drop Access
- Light effervescent foam clings to surfaces allowing you to see exactly where you applied it
- Low or no foam or suds nozzle
- Multi [action] [control] [nozzle] [trigger] [option for better] [bleach] control]
- Multi [action] [control] [nozzle] [trigger] [spray and foaming option]
- No Waste -or Wasteless Bottle
- Prevents [-or reduces or eliminates] over spray
- Smart Tube[®] [™] Technology
- Spray Formula
- Sudsing or foaming action
- Targeted [foaming] spray action [for better] [bleach] control]

Specific for non spray products (i e , dilutable, industrial and warehouse packages)

- Concentrate or Concentrated Formula



DISINFECTION CLAIMS

Claims

- A bleach product for household [and/or institutional and/or industrial] cleaning and disinfecting
- Anti bacterial [action]
- Anti bacterial cleaner
- Bacteria fighting or Germ fighting formula
- Bactericide or- Bactericidal
- Bathroom or restroom disinfectant
- Bleach disinfectant [and/or cleaner]
- Broad spectrum disinfectant or disinfectancy [cleaner]
- Clean Disinfect Protect
- Cleaner and disinfectant in one
- Cleans and/or disinfects [bathroom] [school] [classroom] [restroom] [kitchen] [home] [household] [office] [work or office place] [environment]] [place]
- Disinfecting bleach cleaner
- Disinfects
- Disinfects [inside and/or outside of] appliances
- Disinfects and cleans your home
- Disinfects and deodorizes by killing common household germs and controlling their odors
- Disinfects as it cleans
- Disinfects for pennies
- Disinfects nonporous [hard] [solid] surfaces
- Easily [cleans] [deodorizes] [sanitizes] [disinfects]
- [Easy] [convenient] way to disinfect
- [Effective] [bathroom and/or restroom and/or- kitchen and/or household and/or office and/or workplace] disinfectant and/ or cleaner
- [Effective] disinfectant [in presence of 5% serum load or organic soil]
- Germicide or- Germicidal
- Hospital and home disinfectant
- Hospital institutional disinfectant
- Kills cold and flu virus
- Kills germs while it cleans
- Kills or eliminates or destroys [99 9%] [cold virus] [flu virus]
- Kills or eliminates or destroys [99 9%] [E coli] [Salmonella] [harmful kitchen germs or bacteria]
- Kills or eliminates or destroys [99 9%] of viruses that cause cold or flu
- Kitchen disinfectant
- One step cleaner and disinfectant
- Removes stains and disinfects
- Salmonella enterica (***tested as Salmonella choleraesuis***) [(Salmonella)] and Staphylococcus aureus [(Staph)] are common germs found where food is prepared and stored This product kills these harmful germs and helps control the hazard/spread of food borne contamination on treated surfaces in kitchens
- This [cleaner] [disinfectant] combines cleaning and disinfecting [in one product] [in one step]
- [This product] has the cleaning power and/or effectiveness of Clorox® to clean and disinfect
- This product is a cleaner disinfectant which combines cleaning disinfecting and stain removal in one product
- Virucide or- Virucidal*
- ***For spray*** Kills 99 9% of [common] household germs [bacteria and/or viruses]

Exposure Reduction Claims

- Reduces exposure to Methicillin resistant Staphylococcus aureus [(MRSA)] from treated surfaces

1302 14

TABLE ONE

USE LOCATIONS [Where to use this product] [For use around or in or throughout the]

- | | | | |
|--|---|---|--|
| • Airplane or Plane [Lavatory or Lavatories] | • [Dental or Medical] Office | • Kitchen | • Patio or Porch |
| • Ambulance | • [Dentist s or Doctor s or Physician s] Office | • Laboratory | • Pharmacy |
| • Automobile or Car | • Dining Room | • Laundromat | • Plant |
| • Basement | • Dormitory | • Laundry Room | • Playground Equipment |
| • Bathroom | • Elder Care Centers | • Living Room | • Recreational Center or Facility |
| • Bedroom | • [Elementary] School or College or University | • Locker Rooms | • Restaurant |
| • Blood Bank | • Factory or Plant | • Medical or- Dental or Physician s or Doctor s or Nurse s or Pediatrician s [Office[s]] [Waiting Room[s]] Exam[ination] Room[s] or Table[s]] | • RV |
| • Boat | • Family Room | • [Medical] Clinic | • School |
| • Bowling Alley | • Fitness Center | • Military Installation | • [School or City or Public Transit or Commuter] Bus |
| • Business | • Garage | • Mobile Home | • Shelter |
| • Butcher Shop | • Grocery Store | • Motel | • Supermarket |
| Cafeteria | • Gymnasium | • Motor or House Boat | • Trailer |
| • Camper or RV or Trailer or Mobile Home | • Health Club | • Nursery | • Train Interior |
| • Campground | • Hospital | • Nursing Home or Convalescent Home or Senior [Citizen s] Home | • Vehicle [Interior] [Exterior[s]] |
| • Children s or Child s or Kid s [Play] Room | • Hotel | • Office | • Veterinary Clinic |
| • Church | • House[boat] | | |
| • Common [Classroom] [School] [Play] Areas | • Industrial Facility | | |
| • Day Care Center | • Institutional Kitchen | | |
| | • Jungle Gym[s] | | |

USE SITES [Use] On [hard] [nonporous surfaces]

- | | | | |
|--|---|---|--|
| • [Baby] and/or- [Children s] Toy[s] | • Desk[s] | • [Inside and/or Outside] Toilet[s] | • Range Hoods |
| • Baby Furniture (Cribs Changing Tables) | • Diaper Changing Table[s] | • [Kitchen] Counter[s] | • Refrigerator Door |
| • [Basement] [Washable] Walls | • Diaper Pail[s] | • Lamp[s] | • Restaurant High Chairs |
| • [Bath] Tub[s] | • [Dining or Kitchen or Play] Table | • Light Switch | • [Salad Bar] [Buffet] [Cafeteria] Sneeze Guard[s] |
| • [Bathroom] [Kitchen] Windowsills | • Dish Pail[s] | • [Manual] Pencil Sharpener | • [School] [Toys] [Supplies] |
| • Bed Frame[s] | • Dish Rack[s] | • Many Crib Surface[s] | • Shower Curtain[s] |
| • Bidet[s] | • Door Knob[s] | • Outdoor Furniture [except cushions and wood frames] | • Shower [stalls] |
| • Blinds | • Examination Table[s] | • Ovens [Exteriors] | • Sink[s] |
| • Cabinets | • Floors [No Wax and/or Washable] | • Paper Towel [Dispensers] [Holders] | • Table Top[s] |
| • Cat and/or Dog and/ or Pet Dish[es] or Soiled Surface[s] | • Food Serving Area[s] | • Patient Chair[s] | • Telephone[s] |
| • [Classroom] Desks | • Hand Dryer Buttons | • Picnic Tables [nonporous] | • Urinal[s] |
| • Countertop[s] | • [High] Chair[s] | • [Plastic] Cutting Boards | • Wading Pool[s] |
| | • [Inside and/or Outside of] Appliances [such as] [Refrigerators Microwaves Freezers] | • Plastic Mattress Cover[s] | • [Water] [Drinking] Fountain [Toggle] |
| | | • Porta Potty or Portable Bathroom | • Wheelchair[s] |

14 of 14

TABLE ONE continued

USE SURFACES

- Chrome
 - Glazed Porcelain
 - Metal
 - Sealed Granite
 - Corian
 - Laminate
 - Plastic
 - Stainless Steel
 - Enamel
 - Laminated Surface[s]
 - Plastic Laminate
 - Synthetic or Cultured Marble
 - Formica
 - Linoleum
 - Resilient Flooring
 - Vinyl Tile
 - Glazed [Ceramic] Tile
 - Marlite
 - Sealed Fiberglass [[bath] tubs] and/or [sinks]
- Prolonged contact with metal old porcelain or worn plastic laminate may cause discoloration
- [Avoid contact with clothes fabric wood rubber painted and paper surfaces Do not use on steel aluminum silver or chipped enamel
APPLY CAREFULLY This product contains bleach]