

PM-19

Reg # 67517-28

193

FRONT PANEL

**ROACH & ANT INSECTICIDE**

KILLS--ROACHES, ANTS, SPIDERS AND Certain Other Crawling Insects In And Around The Home As Listed On This Label

**ACTIVE INGREDIENT:**

|                                                                                 |       |
|---------------------------------------------------------------------------------|-------|
| Chlorpyrifos [0,0-diethyl 0-(3,5,6-trichloro 2-pyridyl) phosphorothioate] ..... | 0.50% |
|---------------------------------------------------------------------------------|-------|

|                                 |         |
|---------------------------------|---------|
| <b>INERT INGREDIENTS:</b> ..... | 99.50%  |
|                                 | 100.00% |

Contains petroleum distillates

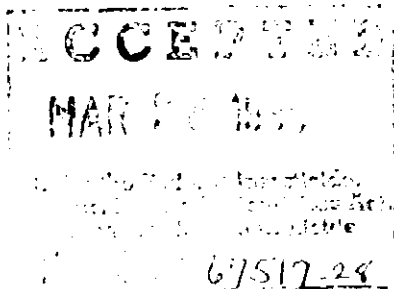
**KEEP OUT OF REACH OF CHILDREN.**

**CAUTION**

**SEE SIDE/BACK PANEL FOR  
ADDITIONAL PRECAUTIONARY STATEMENTS**

EPA Reg. No.: 67517-28  
NET CONTENTS: 16 OZ (1 PT)

EPA Est. No.: 67517-MO-1



Manufactured By  
**PM RESOURCES, INC.**  
15001 St. Charles Rock Road  
St. Louis, MO 63144

**SIDE/BACK PANEL****PRECAUTIONARY STATEMENTS  
HAZARD TO HUMANS AND DOMESTIC ANIMALS  
CAUTION**

**Harmful if swallowed.** Avoid contact with eyes, skin and clothing. Avoid breathing vapors or spray mist. Wash thoroughly with soap and water after handling. Remove contaminated clothing and wash clothing before reuse.

Do not use as a space spray or on plants. Remove pets and cover fish bowls before spraying. Do not allow children or pets to contact treated surfaces until spray has dried. Do not contaminate food, feedstuffs or water supply. Thoroughly wash dishes and food utensils if contaminated with this product. Wash spray residue off plastic surfaces, asphalt tile, or surfaces that might stain.

**Note to Physician:** Contains petroleum distillate. If gastric lavage is necessary, undertake only after proper placement of a cuffed endotracheal tube. Chlorpyrifos is a cholinesterase inhibitor. Treat symptomatically. Atropine by injection only is an antidote.

Do not use in edible products areas of food processing plants, restaurants or other areas where food is commercially prepared or processed. Do not use in serving areas while food is exposed.

**STATEMENT OF PRACTICAL TREATMENT**

**If swallowed:** Call a doctor or get medical attention. Do not induce vomiting. Do not give anything by mouth to an unconscious person. Avoid alcohol.

**If in eyes:** Flush eyes with plenty of water. Call a physician if irritation persists.

**If on skin:** Wash with plenty of soap and water. Get medical attention if irritation persists.

**If inhaled:** Remove victim to fresh air. If not breathing, give artificial respiration, preferably mouth-to-mouth. Get medical attention.

**ENVIRONMENTAL HAZARD**

This pesticide is extremely toxic to fish, birds, and other wildlife. Do not apply directly to water. Drift and runoff from treated areas may be hazardous to aquatic organisms in adjacent aquatic sites. Cover or incorporate spills. Do not contaminate water by cleaning of equipment or disposal of equipment washwaters.

**SIDE/BACK PANEL**

**CHEMICAL AND PHYSICAL HAZARD  
FLAMMABLE. KEEP AWAY FROM HEAT AND OPEN FLAME.**

**DIRECTIONS FOR USE**

**It is a violation of Federal law to use this product in a manner inconsistent with its labeling.**

Do not use this product in or on electrical equipment due to the possibility of shock hazard.

**For Spot Applications Only. Use as a surface spray only as specified on this label.**  
Apply as a coarse, large droplet spray to localized areas where pests may occur. Spray surfaces until wet. Re-treat as needed.

**Cockroaches, Ants, Silverfish, Spiders, Crickets:** Spray into cracks and corners, beneath and behind cabinets, refrigerators, sinks and stoves, behind baseboards, around doors and windows, along foundation, around garbage and waste containers, and other localized areas where pests may occur. Spray ant trails and places where ants may enter.

**Brown Dog Ticks:** Remove dog from area. Spray infested areas such as bed and resting quarters, nearby cracks, along and behind baseboards, window and door frames and localized areas of floor and floor covering where these pests may be present. Old bedding of pets should be removed and replaced with clean, fresh bedding after treatment. **Do not spray pets with this product.**

**Flies and Mosquitoes:** Use only out-of-doors as an aid in reducing annoyance from these insects. Spray outside surfaces of window and door frames, dark corners and under eaves of porches, patios and garages.

**STORAGE AND DISPOSAL**

**Storage:** Store in a cool area away from heat or open flame. Store in an area inaccessible to children. Do not store near food or feed products.

**Pesticide Disposal:** Securely wrap original container in several layers of newspaper and discard in trash.

**Container Disposal:** Do not reuse container. Rinse thoroughly before discarding in trash.

**NOTICE OF WARRANTY**

PM RESOURCES, INC. MAKES NO WARRANTY OF MERCHANTABILITY, FITNESS FOR ANY PARTICULAR PURPOSE, OR OTHERWISE, EXPRESSED OR IMPLIED CONCERNING THIS PRODUCT OR ITS USES WHICH EXTEND BEYOND THE USE OF THE PRODUCT UNDER NORMAL CONDITIONS IN ACCORD WITH THE STATEMENTS MADE ON THIS LABEL.