



U.S. ENVIRONMENTAL PROTECTION AGENCY
 Office of Pesticide Programs
 Registration Division (7505P)
 1200 Pennsylvania Ave., N.W.
 Washington, D.C. 20460

EPA Reg. Number:

67505-4

Date of Issuance:

3/11/22

NOTICE OF PESTICIDE:

Registration
 Reregistration

(under FIFRA, as amended)

Term of Issuance:

Conditional, Time-Limited
 Expires: 04/02/2024

Name of Pesticide Product:

ECTO DOG & HORSE FLEA &
 TICK INSECTICIDE

Name and Address of Registrant (include ZIP Code):

Richard Rose
 ECTO Development Corp.
 850 NW Pink Hill Rd
 Blue Springs, MO 64015

Note: Changes in labeling differing in substance from that accepted in connection with this registration must be submitted to and accepted by the Registration Division prior to use of the label in commerce. In any correspondence on this product always refer to the above EPA registration number.

On the basis of information furnished by the registrant, the above named pesticide is hereby registered under the Federal Insecticide, Fungicide and Rodenticide Act.

Registration is in no way to be construed as an endorsement or recommendation of this product by the Agency. In order to protect health and the environment, the Administrator, on his motion, may at any time suspend or cancel the registration of a pesticide in accordance with the Act. The acceptance of any name in connection with the registration of a product under this Act is not to be construed as giving the registrant a right to exclusive use of the name or to its use if it has been covered by others.

This product is conditionally registered in accordance with FIFRA section 3(c)(7)(A). You must comply with the following conditions:

1. Submit and/or cite all data required for registration/reregistration/registration review of your product under FIFRA when the Agency requires all registrants of similar products to submit such data.

Signature of Approving Official:

Elizabeth Fertich, Product Manager 04
 Invertebrate Vertebrate Branch 1
 Registration Division (7505P)
 Office of Pesticide Programs

Date:

3/11/22

2. The Agency has found your company to be in compliance with the terms and conditions for the subject product and is extending the two-year registration restriction. This registration is time-limited and expires 04/02/2024.
3. Please note that the product is still subject to all other previously required conditions of registration. Your company is required to adhere to the spot-on label mitigation, and to submit quarterly enhanced incident reports and quarterly sales information as stated in the amendment letter dated 03/26/2014.
4. Submit one copy of the final printed label for the record before you release the product for shipment.

Should you wish to add/retain a reference to the company's website on your label, then please be aware that the website becomes labeling under the Federal Insecticide Fungicide and Rodenticide Act and is subject to review by the Agency. If the website is false or misleading, the product would be misbranded and unlawful to sell or distribute under FIFRA section 12(a)(1)(E). 40 CFR 156.10(a)(5) list examples of statements EPA may consider false or misleading. In addition, regardless of whether a website is referenced on your product's label, claims made on the website may not substantially differ from those claims approved through the registration process. Therefore, should the Agency find or if it is brought to our attention that a website contains false or misleading statements or claims substantially differing from the EPA approved registration, the website will be referred to the EPA's Office of Enforcement and Compliance.

The Agency, in accordance with the Federal Insecticide, Fungicide and Rodenticide Act (FIFRA), as amended, has completed reviewing all of the information submitted with your application to support the Registration Review of the above referenced product in connection with the Permethrin Interim Decision, and has concluded that your submission is acceptable.

If you fail to satisfy these data requirements, EPA will consider appropriate regulatory action including, among other things, cancellation under FIFRA section 6(e). Your release for shipment of the product constitutes acceptance of these conditions. A stamped copy of the label is enclosed for your records.

Please note that the record for this product currently contains the following CSFs:

- Basic CSF dated 03/26/2014
- Alternate CSF 1 dated 03/26/2014
- Alternate CSF 2 dated 03/26/2014

If you have any questions, please contact Kaitlin Saunders by phone at 202-566-2890, or via email at Saunders.Kaitlin@epa.gov.

Enclosure

{MASTER LABEL: ECTO DOG AND HORSE FLEA AND TICK INSECTICIDE}

{SPLIT LABEL 1 - FOR DOG ONLY PRODUCT}

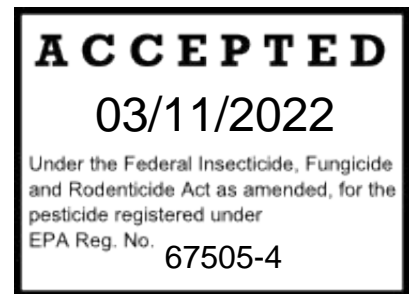
{SPLIT LABEL 2 - FOR HORSE ONLY PRODUCT}

{Text in brackets [] denotes optional statements/images; Text in braces { } are notes to reviewer; Text in parentheses is meant to be included on the label}

{Alternate Brand Names:}

ECTO DOG FLEA AND TICK INSECTICIDE

ECTO HORSE FLEA AND TICK INSECTICIDE



Ecto Development Corporation
850 NW Pink Hill Road
Blue Springs, MO 64015

{Text in brackets [] denotes optional statements/images; Text in braces { } are notes to reviewer; Text in parentheses is meant to be included on the label}

{SPLIT LABEL 1 - FOR DOGS ONLY PRODUCT}

{Front Panel of Outer Packaging /Carton}

{A large, clear picture of a dog in the weight range for the product as packaged will be on the front panel.}

{The word "Dogs" in the brand name will be at least 75% the height of the largest letter in the ABN or Supplemental Distributor name. "Horse" will not appear on dog label.}

{ABN} ECTO DOG FLEA AND TICK INSECTICIDE

**FOR USE ONLY ON DOGS AND PUPPIES 12 WEEKS OF AGE OR OLDER
 AND [5-15 LBS][16-33 LBS][34-66 LBS] [OVER 66 LBS]**

Flea and tick control for dogs & puppies over 12 weeks of age and [5-15 lbs][16-33 lbs][34-66 lbs] [66 lbs or over].

- [Use Only for [Small] Dogs 5 to 15 lbs and over 12 weeks of age]
- [Use Only for [Medium] Dogs 16 to 33 lbs and over 12 weeks of age]
- [Use Only for [Large] Dogs 34 to 66 lbs and over 12 weeks of age]
- [Use Only for [XLarge] Dogs over 66 lbs and over 12 weeks of age]
- {One statement above may appear on front panel of market label according to dog weight range}
- For indoor use only

ACTIVE INGREDIENTS

¹ Permethrin	45.0%
² OTHER INGREDIENTS	<u>55.0 %</u>
TOTAL	100.0 %

¹cis/trans ratio:Max 55% (+) cis and min 45% (+) trans

²Contains Petroleum distillate

KEEP OUT OF REACH OF CHILDREN

CAUTION

See Insert for First Aid and Other Precautionary Statements, and Complete Directions for Use including Storage and Disposal

{Total net contents, fl oz, in carton is determined by fl oz/tube and number of tubes in carton}

NET CONTENTS: X fl. oz. [Y – 0.0xx fl oz (x ml)]
 [1][3][4][6] [0.03 fl oz (1.0 mL)]
 [1][3][4][6] [0.05 fl oz (1.5 mL)]
 [1][3][4][6] [0.10 fl oz (3.0 mL)]
 [1][3][4][6] [0.15 fl oz (4.5 mL)]

{A 1.5cm x 1.5 cm cat prohibition icon in a box will be placed in the lower right hand corner of the front panel in yellow with black images.}

{End - Front Panel of Outer Packaging/Carton}

{Back Panel of Outer Packaging/Carton}

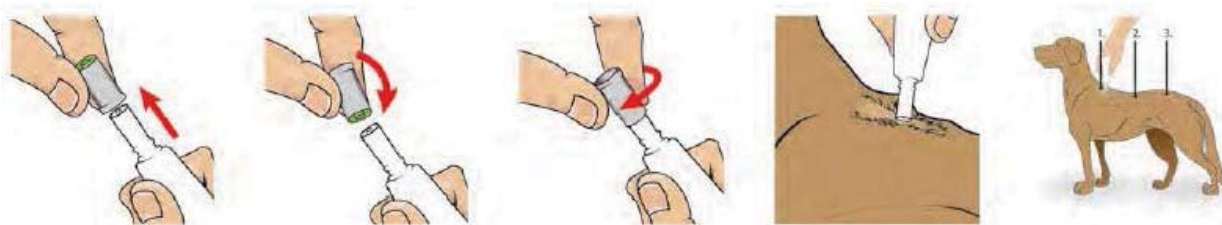
{The word "Dogs" in the brand name will be at least 75% the height of the largest letter in the name.}
{ABN} ECTO DOG FLEA AND TICK INSECTICIDE

DIRECTIONS FOR USE

It is a violation of Federal law to use this product in a manner inconsistent with its labeling. To prevent harm to you and your dog, read entire label and insert before each use. Application of product on pets must only be done indoors.

HOW TO OPEN

Remove product tube from package. Hold tube upright, pull off cap. Turn the cap around and place opposite end of cap back on tube. Twist cap to break seal, remove cap from tube. Invert tube over dog and use open end to part dog's hair.

**HOW TO APPLY**

Dog must be dry at time of application and remain dry for 24 hours after application. Separate the treated dog from all other dogs and cats for 24 hours after treatment has been applied.

{Only one "Apply" sentence will be used on market label depending on the dog size/weight range.}

[Apply the entire tube as a spot to the skin at three [or more] different locations along the dog's back between the shoulder blades and base of the tail.]

[Apply the entire tube as a continuous stripe along the dog's back between the shoulder blades and base of tail.]

Squeeze tube to apply any remaining solution to the dog's skin.

RESTRICTIONS

Do not use on cats or kittens - may be fatal.

Do not use on puppies under 12 weeks of age or weighing less than [5][16][34][66] lbs.

Do not allow children to apply product. Do not contact treatment area until dry.

Do not apply more than one tube per treatment for one dog regardless of the dog's weight.

Do not reapply product before one month.

Do not allow your dog to ingest this product or get into dog's eyes or mouth.

Do not bathe or allow water immersion for 24 hours after application.

[LOT NO.]

Ecto Development Corporation
850 NW Pink Hill Road
Blue Springs, MO 64015

EPA Reg. No. 67505-4

EPA Est. No.

{A box labeled Side Effects will be immediately above the cat warning box on the back panel}

Side Effects: Monitor your dog after application. Side effects may include signs of skin irritation such as redness, scratching, or other signs of discomfort. Gastrointestinal signs such as vomiting or diarrhea have also been reported. If these or other side effects occur, consult your veterinarian or 1-800-xxx-xxxx.

{A 1.5cm x 1.5cm cat prohibition icon and warning text in a box will be in the lower right hand corner of the back panel in yellow with black images and text}

DO NOT USE ON CATS MAY BE FATAL. Keep cats away from treated dogs for 24 hours. If applied to a cat or ingested by a cat, contact your veterinarian immediately.

{END - Back Panel of Outer Packaging/Carton}

{PACKAGE INSERT}

{The word "Dogs" in the brand name will be at least 75% the height of the largest letter in the name.}

{ABN} ECTO DOG FLEA AND TICK INSECTICIDE

FOR USE ONLY ON DOGS AND PUPPIES 12 WEEKS OF AGE OR OLDER
 AND [5-15 LBS][16-33 LBS][34-66 LBS] [OVER 66 LBS]

For Indoor Use Only

ACTIVE INGREDIENTS

¹ Permethrin	45.0%
² OTHER INGREDIENTS	<u>55.0 %</u>
TOTAL	100.0 %

¹cis/trans ratio:Max 55% (±) cis and min 45% (±) trans

²Contains Petroleum distillate

**KEEP OUT OF REACH OF CHILDREN
 CAUTION**

PRECAUTIONARY STATEMENTS

Hazards to Humans: Harmful if swallowed or absorbed through the skin. Avoid contact with skin, eyes or clothing. Causes moderate eye irritation. Wash thoroughly with soap and water after handling and before eating, drinking, chewing gum, using tobacco, or using the toilet. Remove and wash contaminated clothing before reuse.

Hazards to Domestic Animals: FOR EXTERNAL USE ON DOGS ONLY. Consult a veterinarian before using this product on debilitated, aged, medicated, pregnant, or nursing dogs. Consult a veterinarian before using on dogs with known organ dysfunction. Certain medications can interact with pesticides. It is advisable to consult a veterinarian before using this product with ANY other pesticide or drug. This product is not a substitute for a prescribed heartworm preventive.

FIRST AID	
If swallowed:	<ul style="list-style-type: none"> Call a poison control center or a doctor immediately for treatment advice. Do not give any liquid to the person Do not induce vomiting unless told to do so by a poison control center or doctor. Do not give anything by mouth to an unconscious person.

If in eyes:	<ul style="list-style-type: none"> • Hold eye open and rinse slowly and gently with water for 15-20 minutes. • Remove contact lenses, if present, after the first 5 minutes, then continue rinsing eye. • Call a poison control center or doctor for treatment advice.
If on skin or clothing:	<ul style="list-style-type: none"> • Take off contaminated clothing. • Rinse skin immediately with plenty of water for 15-20 minutes. • Call a poison control center or doctor for treatment advice.
HOTLINE NUMBER	
Have the product container or label with you when calling a poison control center or doctor, or going for treatment. For emergency information concerning this product, call 1-800-XXX-XXXX.	
NOTE TO PHYSICIAN: Contains petroleum distillate - vomiting may cause aspiration pneumonia.	

{A box labeled Side Effects will be immediately above the cat warning box}

Side Effects: Monitor your dog after application. Side effects may include signs of skin irritation such as redness, scratching, or other signs of discomfort. Gastrointestinal signs such as vomiting or diarrhea have also been reported. If these or other side effects occur, consult your veterinarian or 1-800-xxx-xxxx.

{A 1.5cm x 1.5cm cat prohibition icon and warning text in a box will be in yellow with black images and text}

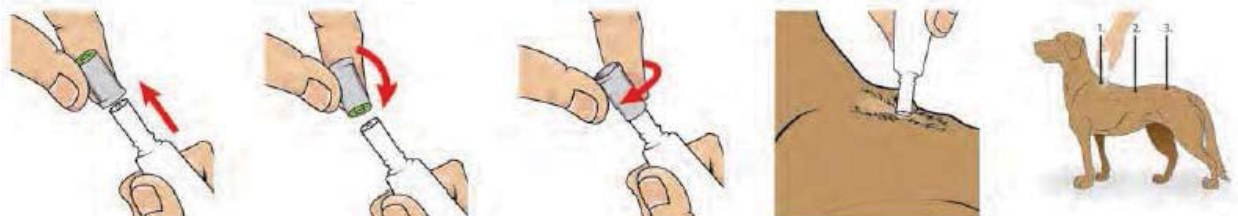
DO NOT USE ON CATS MAY BE FATAL. Keep cats away from treated dogs for 24 hours. If applied to a cat or ingested by a cat, contact your veterinarian immediately.

DIRECTIONS FOR USE

It is a violation of Federal law to use this product in a manner inconsistent with its labeling. To prevent harm to you and your dog, read entire label and insert before each use. Application of product on pets must only be done indoors.

HOW TO OPEN

Remove product tube from package. Hold tube upright, pull off cap. Turn the cap around and place opposite end of cap back on tube. Twist cap to break seal, remove cap from tube. Invert tube over dog and use open end to part dog's hair.



HOW TO APPLY

Dog must be dry at time of application and remain dry for 24 hours after application. Separate the treated dog from all other dogs and cats for 24 hours after treatment has been applied.

{Only one "Apply" sentence will be used on market label depending on the dog size/weight range.}
[Apply the entire tube as a spot to the skin at three [or more] different locations along the dog's back between the shoulder blades and base of the tail.]
[Apply the entire tube as a continuous stripe along the dog's back between the shoulder blades and base of tail.]
Squeeze tube to apply any remaining solution to the dog's skin.

RESTRICTIONS

Do not use on cats or kittens - may be fatal.
Do not use on puppies under 12 weeks of age or weighing less than [5][16][34][66] lbs.
Do not allow children to apply product. Do not contact treatment area until dry.
Do not apply more than one tube per treatment for one dog regardless of the dog's weight.
Do not reapply product before one month.
Do not allow your dog to ingest this product or get into dog's eyes or mouth.
Do not bathe or allow water immersion for 24 hours after application.

STORAGE AND DISPOSAL

Do not contaminate water, food, or feed by storage and disposal.

PESTICIDE STORAGE: Store this product in a cool, dry (preferably locked) place away from heat and open flame, in an area inaccessible to children and animals.
Protect from freezing.

PESTICIDE DISPOSAL AND CONTAINER HANDLING:

Non-refillable container. Do not reuse or refill this container. **If empty:** Place in trash or offer for recycling if available. **If partly filled:** Do not pour or dispose down-the-drain or sewer. Call your local solid waste Agency for local disposal options.

[WARRANTY AND DISCLAIMER

Seller warrants this product complies with the specifications expressed in this label. To the extent consistent with applicable law, Seller makes no other warranties and disclaims all other warranties, express or implied, including but not limited to warranties of merchantability and fitness for the intended purpose. To the extent consistent with applicable law, Seller's liability or default, breach, or failure under this label shall be limited to the amount of the purchase price. To the extent consistent with applicable law, Seller shall have no liability for consequential damages.]

Ecto Development Corporation
850 NW Pink Hill Road
Blue Springs, MO 64015

EPA Reg. No. 67505-4
EPA Est. No.

{END – Package Insert}

{Individual Tube Label-regardless of package type}

{ABN} ECTO DOG FLEA AND TICK INSECTICIDE

ONLY for Dogs [5-15][16-33][34-66][over 66] lbs and over 12 weeks of age

Net Wt. [0.03][0.05][0.10][0.15] fl oz

EPA Reg. No. 67505-4

Read Entire Label Before Use

Keep Out of Reach of Children

CAUTION

DO NOT USE ON CATS icon

Lot #

{END – Individual Tube Label}

{Blister Card Label}

{ABN} ECTO DOG FLEA AND TICK INSECTICIDE

ONLY for Dogs [5-15][16-33][34-66][over 66] lbs and over 12 weeks of age

EPA Reg. No. 67505-4

Read Entire Label Before Use

Keep Out of Reach of Children

CAUTION

DO NOT USE ON CATS icon

Net Wt: [0.03 fl oz (1.0 mL)] {for dogs 5-15 lbs}

[0.05 fl oz (1.5 mL)] {for dogs 16-33 lbs}

[0.10 fl oz (3.0 mL)] {for dogs 34-66 lbs}

[0.15 fl oz (4.5 mL)] {for dogs over 66 lbs}

Lot #

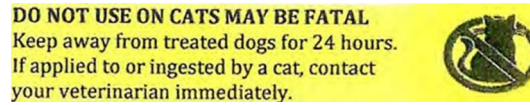
{END – Blister Card Label}

{OPTIONAL: Monthly Reminder stickers}

[Printed on approximately 3'x4" peel off paper, located inside package – not visible from outside]

{ABN} ECTO DOG FLEA AND TICK INSECTICIDE

Use these calendar stickers to remind you when your dog [horse] is due for its next monthly application.



Monthly Sticker	Monthly Sticker	Monthly Sticker	Monthly Sticker
Do Not Use on Cats	Do Not Use on Cats	Do Not Use on Cats	Do Not Use on Cats
MONTH 1	MONTH 2	MONTH 3	MONTH 4

{Number of stickers dependent on number of tubes in carton}

{END – OPTIONAL: Monthly Reminder stickers}

{Alternate text for HOW TO OPEN and remove tube printed on carton back panel and package insert, based on alternate product packaging types below:}

{FOR TWIST TUBES:} [Remove product from package. Holding tube upright, twist off cap. Invert tube over dog and use open end to part dog's hair.]

{FOR TUBES IN BLISTER CARD:} [Remove product tube from package. Holding tube with the notched end pointing up and away from face and body, snap or cut off narrow end at notches. Invert tube over dog and use open end to part dog's hair.]

{FOR SQUEEZE ON TUBES:} [Remove product tubes from the package. [Separate one tube from the others.] Hold the tube with notched end pointing up and away from the face and body [of dog]. Use scissors to cut off the narrow end at the notches along the lines. Invert tube over dog and use open end to part dog's hair.]

{FOR SNAP BACK TUBES:} [Remove tube from packaging. Hold the tube with the narrow end pointing up. Snap the outline of the tip back at marked line to allow access to the narrow end of tube. Hold tube away from eyes of you and dog. [Snap tip backwards][Cut at marked line] to open. Invert tube over dog and use open end to part dog's hair.]

{END - Alternate text for how to open and remove tube on carton back panel and package insert, based on alternate product packaging types}

{Individual optional claims below that may or may not appear anywhere on the final printed labeling follow:}

- KILLS & REPELS FLEAS UP TO [4 WEEKS][ONE MONTH]
- KILLS AND REPELS MOSQUITOES
- PROTECTS AGAINST BLOOD FEEDING BY MOSQUITOES (vector of HEARTWORM) UP TO [4 WEEKS][ONE MONTH]
- KILLS & REPELS TICKS FOR UP TO [4 WEEKS][ONE MONTH]
- KILLS & REPELS DEER TICKS (vector of LYME DISEASE) FOR UP TO [4 WEEKS][ONE MONTH]
- KILLS & REPELS BROWN DOG TICKS (Rhipicephalus sanguineus) FOR UP TO [4 WEEKS][ONE MONTH]
- KILLS & REPELS AMERICAN DOG TICKS (Dermacentor variabilis) FOR UP TO [4 WEEKS][ONE MONTH]
- MONTHLY APPLICATION
- MONTHLY FLEA, TICK AND MOSQUITO TREATMENT
- KILLS AND REPELS ADULT FLEAS FOR UP TO [4 WEEKS][ONE MONTH]
- KILLS AND REPELS TICKS FOR UP TO [4 WEEKS][ONE MONTH]
INCLUDING DEER TICKS [(vector of LYME DISEASE)],
BROWN DOG TICKS AND AMERICAN DOG TICKS

{End - Individual Optional Claims}

{Text in brackets [] denotes optional statements/images; Text in braces { } are notes to reviewer; Text in parentheses is meant to be included on the label}

{SPLIT LABEL 2 - FOR HORSE ONLY PRODUCT}

{Front Panel of Outer Packaging /Carton}

{The word "Dogs" will not appear on market label for horses}

{ABN} ECTO HORSE FLEA AND TICK INSECTICIDE

ACTIVE INGREDIENTS

¹ Permethrin	45.0%
² OTHER INGREDIENTS	<u>55.0 %</u>
TOTAL	100.0 %

¹cis/trans ratio:Max 55% (±) cis and min 45% (±) trans

²Contains Petroleum distillate

For both indoor and outdoor use.

KEEP OUT OF REACH OF CHILDREN

CAUTION

See Back/Side Panel for First Aid and Other Precautionary Statements, and Complete Directions for Use including Storage and Disposal

{Total net contents, fl oz, in carton is determined by number of tubes in carton}

NET CONTENTS: X fl. oz. [3][[6] – 0.34 fl oz (10 ml) tubes]

EPA Reg. No. 67505-3

EPA Est. No.

Ecto Development Corporation

850 NW Pink Hill Road

Blue Springs, MO 64015

Mfg. & Printed in U.S.A

{A 1.5cm x 1.5cm cat prohibition icon and warning text in a box will be in the lower right hand corner of the back panel in yellow with black images and text}

DO NOT USE ON CATS MAY BE FATAL. Keep cats away from treated horses for 24 hours. If applied to a cat, contact your veterinarian immediately.

{End - Front Panel of Outer Packaging/Carton}

{Back and/or Side Panel of Outer Packaging/Carton}

{The word "Dogs" will not appear on market label for horses}
{ABN} ECTO HORSE FLEA AND TICK INSECTICIDE

PRECAUTIONARY STATEMENTS**CAUTION**

Hazards to Humans: Contains petroleum distillates. Harmful if swallowed or absorbed through the skin. Avoid contact with skin, eyes or clothing. Causes moderate eye irritation. Wash thoroughly with soap and water after handling and before eating, drinking, chewing gum, using tobacco, or using the toilet. Remove and wash contaminated clothing before reuse.

Hazards to Domestic Animals: FOR EXTERNAL USE ON HORSES ONLY. If applied to or ingested by a cat, contact your veterinarian immediately. Consult a veterinarian before using this product on debilitated, aged, medicated, pregnant, or nursing horses. Consult a veterinarian before using on horses with known organ dysfunction. Certain medications can interact with pesticides. It is advisable to consult a veterinarian before using this product with ANY other pesticide or drug. This product is not a substitute for prescribed heartworm preventative.

Adverse Reactions: Some horses may be sensitive to ingredients in this product. Adverse reactions in horses may include skin sensitivity, lethargy, increased pruritus (itchiness), erythema (redness), rash and hair discoloration or hair loss at the application site. Observe the horse following treatment. Sensitivity may occur after using ANY pesticide product on horses. If signs of sensitivity occur bathe your horse with a mild shampoo and rinse with large amounts of water. If signs continue, consult a veterinarian immediately.

FIRST AID	
If swallowed:	<ul style="list-style-type: none"> • Call a poison control center or a doctor immediately for treatment advice. • Do not give any liquid to the person • Do not induce vomiting unless told to do so by a poison control center or doctor. • Do not give anything by mouth to an unconscious person.
If on skin or clothing:	<ul style="list-style-type: none"> • Take off contaminated clothing. • Rinse skin immediately with plenty of water for 15-20 minutes. • Call a poison control center or doctor for treatment advice.
If in eyes:	<ul style="list-style-type: none"> • Hold eye open and rinse slowly and gently with water for 15-20 minutes. • Remove contact lenses, if present, after the first 5 minutes, then continue rinsing eye. • Call a poison control center or doctor for treatment advice.

HOTLINE NUMBER

Have the product container or label with you when calling a poison control center or doctor, or going for treatment. For emergency information concerning this product, call 1-800-XXX-XXXX.

NOTE TO PHYSICIAN: Contains petroleum distillate - vomiting may cause aspiration pneumonia.

PHYSICAL OR CHEMICAL HAZARDS

Do not use or store this product near heat or open flames

ENVIRONMENTAL HAZARDS

This product is extremely toxic to fish. Do not add directly to water. Do not contaminate water when disposing of product or packaging.

ECTO HORSE FLEA & TICK INSECTICIDE is an effective and easy to use product. As with all flea and tick control products, this product should be used as part of a program aimed at reducing fleas. Consult your veterinarian for program recommendations.

DIRECTIONS FOR USE

It is a violation of Federal law to use this product in a manner inconsistent with its labeling. Read entire label before each use to prevent harm to you and the horse.

HOW TO APPLY

Remove one product tube from package. [Fold along perforation between tubes and tear off one tube. Return unused tubes to package.] Holding tube with notched end pointing up and away from face and body, snap off narrow end at notches.

Apply one tube (10.0 mL) of product solution as follows:

- 5 mL along the back line starting at the poll (top of head behind the ears), along the base of the mane, down the dorsal midline to the dock. (base of the tail)
- 1 mL to the top of the forehead under the forelock.
- 1 mL as a stripe to the front of each foreleg, from the ankle up to the knee (2 mL total)
- 1 mL as a stripe to the front of each hindleg, from the ankle up to the hock (2 mL total)

See Storage and Disposal for disposal instructions.

RESTRICTIONS

Do not use on cats or kittens - may be fatal.

Do not use on animals other than horses.

Do not use on foals under 12 weeks of age.

Do not use on horses intended for slaughter and/or human consumption.

Do not allow product to contact horses' eyes or mucous membranes.

Do not allow children to apply product. Do not contact treatment area until dry.

Do not bathe or allow water immersion for 24 hours after application.

Do not reapply product for one month.

STORAGE AND DISPOSAL

Do not contaminate water, food, or feed by storage and disposal.

PESTICIDE STORAGE: Store this product in a cool, dry (preferably locked) place away from heat and open flame, in an area inaccessible to children and animals.

Protect from freezing.

PESTICIDE DISPOSAL AND CONTAINER HANDLING:

Non-refillable container. Do not reuse or refill this container. **If empty:** Place in trash or offer for recycling if available. **If partly filled:** Do not pour or dispose down-the-drain or sewer. Call your local solid waste Agency for local disposal options.

NOTICE OF WARRANTY

NOTE: Seller warrants this product complies with the specifications expressed in this label. To the extent consistent with applicable law, Seller makes no other warranties and disclaims all other warranties, express or implied, including but not limited to warranties of merchantability and fitness for the intended purpose. To the extent consistent with applicable law, Seller's liability or default, breach, or failure under this label shall be limited to the amount of the purchase price. To the extent consistent with applicable law, Seller shall have no liability for consequential damages.

{END - Back or Side Panel of Outer Packaging/Carton}

{TUBE LABEL}

{ABN} ECTO HORSE FLEA AND TICK INSECTICIDE

Permethrin 45 %

KEEP OUT OF THE REACH OF CHILDREN
CAUTION

DO NOT USE ON CATS icon-MAY BE FATAL

READ DIRECTIONS AND PRECAUTIONS BEFORE USING

EPA Reg. No. 67505-4

0.34 fl oz (10 ml)

Lot #

{End - TUBE LABEL}

{Individual optional claims below that may or may not appear anywhere on the final printed labeling follow:}

- Pleasant citrus scent
- Protects horses from flies, gnats, mosquitoes and ticks
- Kills & repels fleas up to [4 weeks][1 month]
- Kills and repels mosquitoes
- Protects against blood feeding by mosquitoes (vector of heartworm) up to [4 weeks][1 month]
- Kills & repels ticks for up to [4 weeks][1 month]
- Kills & repels deer ticks (vector of Lyme disease) for up to [4 weeks][1 month]
- Kills & repels brown dog ticks (Rhipicephalus sanguineus) for up to [4 weeks][1 month]
- Kills & repels American dog ticks (Dermacentor variabilis) for up to [4 weeks][1 month]
- Monthly application
- Monthly flea, tick and mosquito treatment
- Kills and repels fleas and ticks for up to [4 weeks][1 month]
- Kills and repels ticks for up to [4 weeks] [1 month] including deer ticks (vector of Lyme disease), brown dog ticks and American dog ticks
- Protects horses from house flies, stable flies, face flies, horn flies, eye gnats and ticks
- Kills and repels house flies, stable flies, face flies, horn flies, eye gnats and ticks on horses
- Aids in the control of horse flies, deer flies, mosquitoes and black flies on horses

{END - Individual optional claims}