

67419-1

01/10/2006

1/2

TEAR HERE

EASY RESEALABLE PACKAGE

ALSO USED IN BISSELL  
HOOVER EUREKA  
AND SEARS  
MACHINES!



THE ECOLOGY WORKS®

# DUSTMITE™

## AND FLEA CONTROL

KILLS DUST MITES & FLEAS



Satisfaction  
guaranteed or  
your money back!



Active Ingredient:  
Disodium Octaborate Tetrahydrate (Na<sub>2</sub>B<sub>8</sub>O<sub>13</sub>·4H<sub>2</sub>O) 98%  
Inert Ingredients: 2%

NET WT. 8 OZ

CAUTION:  
Keep out of reach of children  
See back panel for additional precautionary statements.  
EPA Reg. No. 67419-1 EPA Est. No. 68086-FL-01  
US Patent No. 5672362

**ACCEPTED**  
JAN 10 2006  
Under the Federal Insecticide,  
Fungicide, and Rodenticide Act,  
as amended, for the pesticide  
registered under  
EPA Reg. No. 67419-1

◀ TEAR HERE

EASY RESEALABLE PACKAGE

**DIRECTIONS FOR USE**

It is a violation of Federal law to use this product in a manner inconsistent with its labeling.

**1) FOR USE AS SPRAY**

SPRAY APPLICATION MIXING DIRECTIONS				
Amount of DustMite & Flea Control	1/2 cup	1 cup	2 cups	8 cups
Water	1 quart	1/2 gal.	1 gal.	4 gal.
Treatment Area	50 sq. ft.	100 sq. ft.	200 sq. ft.	800 sq. ft.

For control of dust mites & fleas in carpet, first vacuum or deep clean carpet in normal fashion. In a clean bucket, mix 1 cup of DUSTMITE & FLEA CONTROL in 1/2 gallon of water & fill sprayer. Spray evenly to treat 100 sq. feet. A stiff brush or carpet rake will aid penetration on dense carpet pile.

Before treating furniture, bedding, mattress or drapes, vacuum thoroughly, then test small area to evaluate staining. When treating couches & chairs, remove cushions & vacuum, then spray all crevices & undersides. Allow to dry before replacing cushions. Spray all pet sleeping areas, including pet bedding. **Do Not Saturate.**

Avoid contact with treated surfaces until dry. Run clean water through sprayer to flush pump after use.

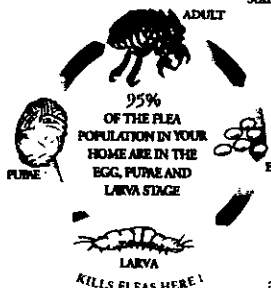
**2) USING A HOT-WATER VACUUM CARPET CLEANING MACHINE**

SPRAY APPLICATION MIXING DIRECTIONS				
Amount of DustMite & Flea Control	1/2 cup	1 cup	2 cups	8 cups
Water	1/2 gal.	1 gal.	2 gal.	8 gal.
Treatment Area	25 sq. ft.	50 sq. ft.	100 sq. ft.	400 sq. ft.

For control of dust mites & fleas in carpet, in a clean bucket, mix 1 cup of DUSTMITE & FLEA CONTROL with each gallon of carpet cleaning solution & hot tap water (or plain hot tap water), then add solution to cleaning machine dispensing tank. Apply 1 gallon per 50 sq. ft. This process drives DUSTMITE & FLEA CONTROL deep into the carpet & the vacuum draws out dust mite & flea feces, dirt, body parts & excess solution (approximately half the amount of solution applied) into the recovery tank.

Before treating upholstery, bedding, mattress or drapes, vacuum thoroughly, then test small area to evaluate

staining. Apply DUSTMITE & FLEA CONTROL using the upholstery cleaning head. Treat all surfaces including underside of cushions & the wells of furniture. Allow to dry before replacing cushions. Run clean water through machine to flush spray pump after use.



**TREATMENT INTERVAL**

DustMite & Flea Control is effective reducing dust mite & flea population densities 4-6 weeks after initial treatment. For dust mite &/or flea control do not apply more than once every 8 weeks.

**STORAGE & DISPOSAL**

Do not contaminate water, food or feed by storage or disposal. Store in a dry place. Do not store where children or animals may gain access. Rinse empty container 3 times and discard in trash collection.

**PRECAUTIONARY STATEMENTS**

**(HAZARDS TO HUMANS & DOMESTIC ANIMALS)**

Caution: Harmful if swallowed. Avoid contact with eyes. Wash thoroughly after handling. Avoid contamination of food & feed. Do not store where children or animals may gain access. Do not treat pets directly with this product.

For 24 hour emergency assistance only 800-222-1222. For customer service: 888-353-2649. Weekdays 9-5 (EST).

FIRST AID	
If Swallowed	Call a poison control center or doctor immediately for treatment advice. Have person sip a glass of water if able to swallow. Do not induce vomiting unless told to do so by a poison control center or doctor. Do not give anything by mouth to an unconscious person.
If in Eyes	Hold eye open and rinse slowly and gently with water for 15-20 minutes. Remove contact lenses, if present, after the first 5 minutes, then continue rinsing eye. Call a poison control center or doctor for treatment advice.
If on Skin	If skin is intact no treatment necessary. If skin abrasions exist, wash with soap and water. Wash clothing prior to reuse.
If Inhaled	Move person to fresh air. If person is not breathing, call 911 or an ambulance, then give artificial respiration, preferably mouth-to-mouth, if possible. Call a poison control center or doctor for treatment advice.

Ecology Works Inc.  
P.O. Box 187  
Hobe Sound, FL 33475

Visit our website:  
[www.ecologyworks.com](http://www.ecologyworks.com)  
for more allergy fighting information

