

UNITED STATES ENVIRONMENTAL PROTECTION AGENCY
WASHINGTON, D.C. 20460



AUG 09 2012

OFFICE OF CHEMICAL SAFETY
AND POLLUTION PREVENTION

Merial
3239 Satellite Blvd.
Duluth, GA 30096

Dear Mr. Dotson:

Subject: Fast Track Amendment to add the claim "prevents tick attachment"
CERTIFECT for Dogs
EPA Registration No. 65331-7
Your Submissions Dated March 16, 2012
Decision Number: 462558

The labeling referred to above submitted in connection with the Federal Insecticide, Fungicide and Rodenticide Act, as amended is **acceptable**.

As required in the letter "Implementation of Label Changes to Pet Spot-On Products" dated September 30, 2011, the following documentation is to be submitted with your amendment application:

- Master labels as they will appear when printed on product boxes for all product dose ranges.
- Copies of any package inserts that may be provided in product packaging (including such things as monthly reminder stickers and additional directions for use).
- Images of vial packaging and labeling (actual empty vial can be provided instead, but it is not required).

This documentation was not included with your application and is required to be submitted for our review by **September 28, 2012**. This documentation will also fulfill the requirement to submit final printed labeling before releasing the product for shipment.

A stamped copy of the label is enclosed for your records. If you have any questions regarding this label, please contact Autumn Metzger at (703) 305-5314 or metzger.autumn@epa.gov.

Sincerely,

A handwritten signature in blue ink, appearing to read "John Hebert".

John Hebert
Product Manager 07
Insecticide-Rodenticide Branch
Registration Division (7505P)

2/18

Reason to Issue: Addition of New Label Claim

Date: 08/6/12
Supercedes: 3/16/12

Draft Master Label

Includes label text for four different applicator sizes corresponding to four dog weight ranges, and including a 1x, 3x and 6x applicator presentation. Due to space limitations the layout of the 1x hanging card may differ from the 3x and 6x cartons (NOTE: The 1x hanging card will not utilize a carton or compliance cards, so all required information will be located on the Insert, blister pack or pipette for the 1x presentation).

(For alternate marketing text, see Pages 16 - 17)

(CARTON FRONT PANEL)

CERTIFECT™ for dogs

- Prevents attachment of ticks
- Rapidly/Quick/Quickly/Fast Acting in 18 hours
- Kills Ticks in 18 hours
- Starts (rapidly) killing ticks (in)(as little as)(within) 6 hours

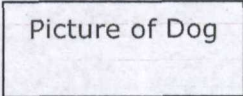
Ticks & all stages of fleas

(For Dogs & Puppies ONLY 8 weeks or older and 5-22 lbs)

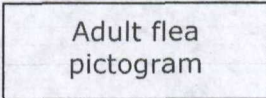
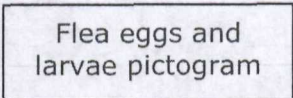
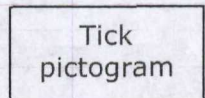
(For Dogs ONLY 8 weeks or older and 23 - 44 lbs)

(For Dogs ONLY 45 - 88 lbs)

(For Dogs ONLY 89 - 132 lbs)



(1)(3)(6) Monthly Doses



- Long-lasting for (1 month against ticks)(and)(3 months against fleas) & Waterproof

Kills ticks that may transmit tick-borne diseases including Lyme disease, Anaplasmosis, Ehrlichiosis, Babesiosis and Rocky Mountain Spotted Fever

AVAILABLE [THROUGH VETERINARIANS][FROM A LICENSED VETERINARY PROFESSIONAL][FROM A LICENSED VETERINARIAN]
READ ENTIRE LABEL BEFORE USE

Contains 1, 3 or 6-[(0.036 fl. oz. (1.07 ml), 0.072 fl. oz. (2.14 ml), 0.145 fl. oz. (4.28 ml), 0.217 fl. oz. (6.42 ml)] applicators

ACCEPTED
AUG 09 2012
Under the Federal Insecticide, Fungicide,
and Rodenticide Act, as amended, for the
pesticide registered under:

EPA. Reg. No: 65331-7

3/18

Reason to Issue: Addition of New Label Claim

Date: 08/6/12
Supercedes: 3/16/12

(CARTON FRONT PANEL)(Cont'd)

Do not use on
cats pictogram

Do not use on cats

[1.5 x 1.5 cm]

**KEEP OUT OF REACH OF CHILDREN
CAUTION**

For first aid and other precautionary statements, refer to product package insert

The amount of active ingredients in the total volume is equivalent to 6.4% Fipronil, 5.8% (S)-Methoprene, and 7.6% Amitraz.

Side A

ACTIVE INGREDIENTS

Fipronil.....	9.8%
(S)-methoprene.....	8.8%
OTHER INGREDIENTS.....	81.4%
TOTAL.....	100.0%

Side B

ACTIVE INGREDIENT

Amitraz.....	22.1%
OTHER INGREDIENTS.....	77.9%
TOTAL.....	100.0%

4/18

(
(

(CARTON INSIDE FRONT PANEL)

CERTIFECT for dogs starts rapidly killing ticks within 6 hours providing a convenient, effective treatment for all stages of ticks **CERTIFECT** kills fleas flea eggs, flea larvae, prevents the development of all stages of fleas, and kills chewing lice and all stages of ticks ONLY for (dogs and puppies 8 weeks or older and 5 22 lbs)(dogs 8 weeks or older and 23 - 44 lbs)(dogs weighing 45 - 88 lbs)(dogs weighing 89 - 132 lbs)

- Prevents attachment of ticks
- Starts rapidly killing all stages of ticks in (as little as) 6 hours including Gulf Coast ticks, Black Legged ticks Brown Dog ticks American Dog ticks, Lone Star ticks and Wood ticks
- Kills ticks which may transmit Lyme Disease canine Ehrlichiosis, Anaplasmosis, Rocky Mountain Spotted Fever, Hepatozoonosis Babesiosis or cause tick paralysis
- (Kills)(Stops)(Controls) existing infestations and prevents re infestations of fleas and ticks
- Detaches ticks when applied to a dog with a pre existing infestation
- Kills adult fleas flea eggs & flea larvae
- Prevents all flea stages (eggs larvae pupae) from developing
- Kills fleas which may cause flea allergy dermatitis
- Eliminates infestations with chewing lice
- Aids in control of sarcoptic mange infestations
- Can also be used on breeding pregnant and lactating bitches
- Fast acting starts killing ticks in (as little as) 6 hours
- Long lasting for (1 month against ticks)(and)(3 months against fleas)
- Waterproof
- Convenient to use

Questions or Comments?
Call 1-800-660-1842

(CARTON INSIDE FRONT PANEL)(Cont d)

(Instructions for the 3x/6x blister pack)

How to apply **CERTIFECT™**



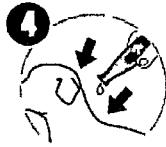
1 TO REMOVE Applicator
Prior to opening
separate one blister
by tearing along perforation



3 HOLD Applicator Upright
away from you and your pet's face
cut applicator tip to open
Do not allow your dog to ingest product.
Do not allow product to runoff

2

TO OPEN
use scissors to cut along
dotted line of single blister
then pull apart foil
and remove the applicator
OR fold on line at corner
tear and open at slit
and remove the applicator



4 APPLY CERTIFECT™
Place applicator tip through dog's hair
to the skin level!
Squeeze applicator applying entire
contents in two separate spots on the
neck between the base of the skull
and the shoulder blades
where the dog cannot lick

6/18

(CARTON BACK PANEL)

CERTIFECT™ for dogs

CERTIFECT™ for dogs starts rapidly killing ticks within 6 hours (providing a convenient, effective treatment for all stages of ticks). **CERTIFECT™** kills fleas, flea eggs, flea larvae, prevents the development of all stages of fleas, and kills chewing lice, and all stages of ticks; **ONLY** for (dogs and puppies 8 weeks or older and 5-22 lbs)(dogs 8 weeks or older and 23 - 44 lbs)(dogs weighing 45 - 88 lbs)(dogs weighing 89 - 132 lbs).

DIRECTIONS FOR USE

It is a violation of federal law to use this product in a manner inconsistent with its labeling. **Read entire label and enclosed directions before each use. Follow all directions and precautionary statements carefully.** Restrictions: Do not allow children to apply product. Use on dogs **ONLY**. Do not use on cats, rabbits or other animals. Do not apply more than once per month. **DO NOT** use on dogs diagnosed with diabetes or heart problems. Consult a veterinarian before using on dogs that are medicated, debilitated, aged or obese. Your dog needs to be dry at the time **CERTIFECT™** is applied and remain dry 24 hours after application. **DO NOT** contact the treated area until completely dry. Verify that the applicator is empty after applying to your dog. [Do not use two applicators for dogs weighing more than 132 lbs.]

To kill all stages of ticks, fleas and chewing lice apply topically to the skin of dogs or puppies (8 weeks or older) as follows:

Open the child-resistant packaging according to the instructions found on the inside back panel of the carton. Hold applicator upright away from you and your pet's face, cut applicator tip with scissors to open. Place applicator tip through dog's hair to the skin level. Squeeze applicator, applying entire contents in two separate spots on the neck between the base of the skull and the shoulder blades where the dog cannot lick. Do not allow your dog to ingest product. Do not allow product to runoff.

Frequency of Application

A monthly application of **CERTIFECT™** kills ticks, completely breaks the flea life cycle and controls chewing lice infestations.

Research demonstrates that **CERTIFECT™** kills adult fleas (*Ctenocephalides felis* and *Ct. canis*), flea eggs, and flea larvae for up to three months. **CERTIFECT™** also prevents development of all flea stages for up to three months. Although **CERTIFECT™** can control fleas for up to three months, if there is a high risk of re-infestation or if the pet has fleas which may cause flea allergy dermatitis, a once monthly application may be needed.

CERTIFECT™ aids in the control of sarcoptic mange infestations. Apply once per month for at least two months for the elimination of mites.

7/18

Reason to Issue: Addition of New Label Claim

Date: 08/6/12
Supercedes: 3/16/12

(CARTON BACK PANEL)(Cont'd)

CERTIFECT™ can also be used for the treatment and control of flea, tick and chewing lice infestations on breeding, pregnant, and lactating bitches.

Satisfaction
Guaranteed
Graphic

Please call our experts at
1-800-660-1842 if you have any
questions or comments about flea,
tick and lice control or
CERTIFECT™.

SIDE EFFECTS: Temporary lethargy and pruritis (itching) may occur with the use of this product. If signs persist, or become more severe within a few days of application, consult a veterinarian immediately.

Do not use on
cats pictogram

DO NOT USE ON CATS
[1.5 x 1.5 cm]

Keep cats away from treated dogs for 24 hours. If applied to a cat or ingested by a cat, contact your veterinarian.

Track and
Trace
pictogram

Merial Limited
3239 Satellite Blvd.
Duluth, GA 30096-4640, USA
MADE IN FRANCE

EPA Reg. No. 65331-7
EPA Est. No. 65331-FR-2

(INSIDE CARTON FLAPS)

CERTIFECT™ for dogs

Rapidly/Quick/Quickly/Fast Acting in 18 hours
Kills Ticks in 18 hours
Starts rapidly killing ticks in (as little as) 6 hours

CERTIFECT™ for dogs provides potentiated efficacy against ticks with a rapid (quick) onset of activity in (as little as)(within) 6 hours. [The active ingredients in **CERTIFECT™** provide for fast acting (and long-lasting) control of fleas, ticks, and chewing lice (for at least 30 days) on dogs.] **CERTIFECT™** acts on multiple sites of the nervous systems of fleas and ticks.

[PICTOGRAMS (icon with slash through)]

Adult Flea
Flea Eggs
Flea Larvae
Flea Pupae
Adult Tick
Tick Larvae
Tick Nymph
Chewing Lice

FRONTLINE® is a registered trademark, and **CERTIFECT™** is a trademark, of Merial.
©2011 Merial Limited, Duluth, GA. All rights reserved.

(PACKAGE INSERT FRONT)

CERTIFECT™ for dogs

For dogs & puppies 8 weeks or older

Convenient fast acting long lasting spot on treatment for control of ticks fleas and chewing lice The amount of active ingredients in the total volume is equivalent to 6 4% Fipronil, 5 8% (S) Methoprene, and 7 6% Amitraz

Side A

ACTIVE INGREDIENTS

Fipronil	9 8%
(S) methoprene	8 8%
OTHER INGREDIENTS	81 4%
TOTAL	100 0%

Side B

ACTIVE INGREDIENT

Amitraz	22 1%
OTHER INGREDIENTS	77 9%
TOTAL	100 0%

KEEP OUT OF REACH OF CHILDREN

CAUTION

CERTIFECT for dogs

Starts rapidly killing all stages of ticks in (as little as) 6 hours including **Gulf Coast ticks, Black Legged ticks, Brown Dog ticks, American dog ticks, Lone Star ticks and Wood ticks**

- Prevents attachment of ticks
- Kills ticks which may transmit **Lyme Disease, canine Ehrlichiosis, Anaplasmosis, Rocky Mountain Spotted Fever, Hepatozoonosis, Babesiosis**, or cause **tick paralysis**
- Effectively (Kills)(Stops)(Controls) existing infestations and prevents re infestations of fleas and ticks
- Detaches ticks when applied to a dog with a pre existing infestation
- Kills adult fleas flea eggs & flea larvae
- Prevents all flea stages (eggs larvae pupae) from developing
- Kills fleas which may cause flea allergy dermatitis
- Eliminates infestations with chewing lice
- Aids in control of sarcoptic mange infestations
- Can be used on dogs and puppies 8 weeks or older
- Can also be used on breeding pregnant and lactating bitches
- Fast acting in (as little as) 6 hours
- Long lasting for 1 month against ticks and 3 months against fleas
- Waterproof
- Convenient to use

Do not use on cats pictogram

DO NOT USE ON CATS

AVAILABLE [THROUGH VETERINARIANS][FROM A LICENSED VETERINARY PROFESSIONAL][FROM A LICENSED VETERINARIAN]

(PACKAGE INSERT FRONT)(Cont d)

CERTIFECT™ aids in the control of sarcoptic mange infestations. Apply once per month for at least two months for the elimination of mites.

CERTIFECT™ can also be used for the treatment and control of flea, tick and chewing lice infestations on breeding, pregnant and lactating bitches.

CERTIFECT contains fipronil, (S) methoprene, an insect growth regulator (IGR) and amitraz. **CERTIFECT** effectively targets all stages of ticks and fleas.

DIRECTIONS FOR USE

It is a violation of federal law to use this product in a manner inconsistent with its labeling. **Read entire label and enclosed directions before each use. Follow all directions and precautionary statements carefully.** Restrictions: Do not allow children to apply product. Use on dogs ONLY. Do not use on cats, rabbits or other animals. Do not apply more than once per month.

(PACKAGE INSERT FRONT)(Cont d)

To kill all stages of ticks fleas and chewing lice apply topically to the skin of dogs or puppies (8 weeks or older) as follows

(Instructions for the 1x blister pack)

How to Apply



TO OPEN use scissors to cut along dotted line of single blister then pull apart foil and remove the applicator **OR** fold on line at corner **tear and open at slit** and remove the applicator

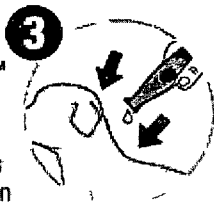


2 **HOLD Applicator Upright** away from you and your pet's face cut applicator tip to open

Do not allow your dog to ingest product Do not allow product to runoff

3 **APPLY CERTIFECT™**

Place applicator tip through dog's hair to the skin level Squeeze applicator applying entire contents in two separate spots on the neck between the base of the skull and the shoulder blades **where the dog cannot lick**



(Open the child resistant packaging according to the instructions found on the inside back panel of the carton)

12/18

Reason to Issue: Addition of New Label Claim

Date: 08/6/12
Supercedes: 3/16/12

(PACKAGE INSERT BACK)

FREQUENCY OF APPLICATION

A monthly application of **CERTIFECT™** kills all stages of ticks, completely breaks the flea life cycle and controls chewing lice infestations. **CERTIFECT™** prevents ticks from attaching, and detaches ticks when applied to a dog with a pre-existing infestation. Do not apply more than once a month. Research demonstrates that **CERTIFECT™** kills adult fleas (*Ctenocephalides felis* and *Ct. canis*), flea eggs, and flea larvae for up to three months. **CERTIFECT™** also prevents development of all flea stages for up to three months. Although **CERTIFECT™** can control fleas for up to three months, if there is a high risk of reinfestation or if the pet has fleas which may cause flea allergy dermatitis, a once monthly application may be needed.

CERTIFECT™ remains effective even after bathing, water immersion, or exposure to sunlight.

PESTICIDE STORAGE AND DISPOSAL

Do not contaminate water, food, or feed by storage or disposal.

STORAGE. Store unused product in original container only in a cool dry place, out of reach of children and animals.

PESTICIDE DISPOSAL. If partly filled: Call your local solid waste agency or 1-800-CLEANUP for disposal instructions. Never place unused product down any indoor or outdoor drain.

CONTAINER DISPOSAL. If empty: Nonrefillable container. Do not reuse or refill this container. Place in trash or offer for recycling, if available.

PRECAUTIONARY STATEMENTS

HAZARDS TO HUMANS and DOMESTIC ANIMALS

CAUTION: Harmful if swallowed. Causes moderate eye irritation. Avoid contact with eyes or clothing. Wash thoroughly with soap and water after handling and before eating, drinking, chewing gum, using tobacco, or using the toilet. Prolonged or frequently repeated skin contact may cause allergic reactions in some individuals.

For external use on dogs and puppies 8 weeks or older. Do not allow children to apply product. Use on dogs ONLY. Do not use on cats, rabbits or other animals. Do not apply more than once per month. Your dog needs to be dry at the time **CERTIFECT™** is applied and remain dry 24 hours after application. Do not contact the treated area until completely dry. Verify that the applicator is empty after applying to your dog. Individual sensitivities, while rare, may occur after using any pesticide product.

SIDE EFFECTS: temporary lethargy and pruritis (itching) may occur with the use of this product. If signs persist, or become more severe within a few days of application, consult a veterinarian immediately.

DO NOT use on dogs that have been diagnosed with diabetes or heart problems. Consult a veterinarian before using on dogs that are medicated, debilitated, aged or obese. Certain medications can interact with pesticides. Amitraz is a monoamine oxidase inhibitor (MAOI); therefore, people taking MAOI-containing medication must take particular care when handling this product. Call 1-800-660-1842 for 24-hour assistance.

13/
18

(PACKAGE INSERT BACK)(Cont'd)

PHYSICAL OR CHEMICAL HAZARDS

COMBUSTIBLE: Do not use or store near heat or open flame.

FIRST AID

Have the product container or label with you when calling a poison control center or doctor or going for treatment, or call 1-800-660-1842 for 24-hour assistance.

If in eyes: Hold eye open and rinse slowly and gently with water for 15-20 minutes. Remove contact lenses, if present, after the first 5 minutes, then continue rinsing. Call a poison control center or doctor for treatment advice.

If swallowed: Call a poison control center or doctor immediately for treatment advice. Have person sip a glass of water if able to swallow. Do not induce vomiting unless told to do so by a poison control center or doctor. Do not give anything to an unconscious person.

HOW SUPPLIED

For easy and convenient treatment, **CERTIFECT™ for dogs** is available in sizes for small dogs and puppies ONLY 8 weeks or older and 5-22 lbs., medium dogs 8 weeks or older and 23-44 lbs., large dogs 45-88 lbs., and extra large dogs 89-132 lbs.

WARRANTY

Seller makes no warranty, expressed or implied, concerning the use of this product other than indicated on the label. To the extent consistent with applicable law, buyer assumes all risk of use and handling of this material when such use and handling are contrary to the label instructions.

EPA Reg. No. 65331-7

Merial Limited

3239 Satellite Blvd.
Duluth, GA 30096-4640, USA

FRONTLINE® is a registered trademark, and **CERTIFECT™** is a trademark, of Merial.

©2011 Merial Limited, Duluth, GA.

All rights reserved.

14/18

(COMPLIANCE CARD)

(FRONT)

See other side for more

CERTIFECT for dogs

Some tips and other information

DO NOT USE ON CATS

Prevents ticks from attaching and detaches ticks when applied to a dog with a pre existing infestation

To successfully control ticks & fleas all dogs must be treated with their own dose of **CERTIFECT**

Apply according to label instructions ensuring the product is applied to the skin It must be applied between the base of the skull and the shoulder blades where the dog cannot lick It may be helpful to remove the collar before application so it doesn't absorb the product

Remember your dog needs to be dry at the time **CERTIFECT** is applied and remain dry 24 hours after application

Verify applicator is empty after applying to your dog

Even indoor dogs need tick and flea control because you or other dogs in the household may bring ticks and fleas into the home

(BACK)

Calendar reminder stickers

To ensure continued protection of your dog use these stickers as a reminder to apply and re purchase **CERTIFECT**

After treating your pet for the first time peel off the sticker and place on your calendar that day

Place the remaining stickers on your calendar as a reminder to apply **CERTIFECT** monthly

Don't forget to re purchase!

6 months
Use all 6 stickers

3 months

5 stickers that read Apply
CERTIFECT™ with the 6th sticker
Re purchase CERTIFECT

Tick pictogram

Pipette pictogram

Flea eggs larvae and adult flea pictogram

Chewing lice pictogram

Do not use on cats pictogram

QUESTIONS? Contact your veterinarian or call our technical experts at 1 800 660 1842 Monday Friday, 8am 8pm For more information, visit **www CERTIFECT com**

CERTIFECT is a trademark of Merial

©2011 Merial Limited Duluth GA All rights reserved

15/
18

Reason to Issue Addition of New Label Claim

Date 08/6/12
Supercedes 3/16/12

(
(

(LABEL ON INDIVIDUAL APPLICATOR)

CERTIFECT for dogs

Side A
9 8% fipronil
8 8% (S) methoprene

Side B
22 1% Amitraz

FOR USE ONLY ON DOGS (& puppies 8 weeks or older and 5 22 LBS)(8 weeks or older and
23 to 44 LBS)(FROM 45 to 88 LBS)(FROM 89 to 132 LBS)

Read the entire label before use

Application to
dog pictogram

EPA Reg No 65331 7

**KEEP OUT OF REACH OF CHILDREN
CAUTION**

Lot No

Do not use on
cats pictogram

(0 036)(0 072)(0 145)(0 217) fl oz



16/18

(LABEL ON BLISTER PACK)

CERTIFECT™ for dogs

(S,M,L,XL)

(For dogs and puppies ONLY 8 weeks or older and 5-22 lbs.)

(For dogs ONLY 8 weeks or older and 23 – 44 lbs.)

(For dogs ONLY 45 – 88 lbs.)

(For dogs ONLY 89 – 132 lbs.)

Do not remove applicator until ready to use

EPA Reg. No. 65331-7

Contains (0.036 fl. oz.)

Contains (0.072 fl. oz.)

Contains (0.145 fl. oz.)

Contains (0.217 fl. oz.)

**KEEP OUT OF REACH OF CHILDREN
CAUTION**

Read the entire label before use

Lot No.



Alternate marketing text

- (Remains effective)(Still works)(even) after (bathing), (water immersion)(swimming) or exposure to (rain) or (sunlight)
- Kills all stages of (all) ticks infesting dogs
- Convenient topical treatment for dogs who enjoy the outdoors
- (Formulated) for dogs that (enjoy)(love) the outdoors
- The killing of fleas and ticks is important in the prevention of disease transmission by these parasites
- Prevents ([add approved tick species] from attaching)(tick attachment)(ticks from attaching)(attachment of ticks)
- (For treatment of)(Treats and controls)(Provides effective control of)(For treatment of infestations with)(Kills)(Stops existing) chewing lice (infestations)
- 9 way protection against fleas flea eggs flea larvae flea pupae ticks tick larvae tick nymphs chewing lice and sarcoptic mange mites
- Tested on puppies from 8 weeks of age
- After application, **CERTIFECT** spreads over the dog s body to provide (full body) (all over) protection against fleas ticks and chewing lice
- **CERTIFECT** provides ongoing protection against fleas ticks and chewing lice [for at least one month (30 days)]
- **CERTIFECT** also contains amitraz an effective acaracide that potentiates fipronil efficacy to rapidly kill ticks starting in [as little as] 6 hours
- **CERTIFECT** contains the insect growth regulator (S) methoprene that acts to prevent the development of all flea stages
- Approximately 95% of the flea population in a household infestation are immature flea stages that live in the dog s environment
- [(Starts rapidly)(Rapidly starts) killing ticks in (as little as)(within) 6 hours)(kills)(detaches)(ticks)(including those)(vectors) (which may cause)(which may transmit) Lyme disease (Ehrlichiosis) (Anaplasmosis) (Babesiosis), (Tick Paralysis), (Rocky Mountain Spotted Fever), (Southern Tick Associated Rash Illness) and (Hepatozoonosis)
- Effective monthly treatment of fleas and ticks
- Easy and effective control of fleas and ticks that lasts at least 1 month (30 days)
- (For treatment of)(Kills) sarcoptic mange mites
- Kills fleas (before they lay eggs) (that may transmit disease including bartonellosis and tapeworm disease)
- (Regular use) protects against all stages of the flea life cycle
- Kills fleas which may reduce the incidence of flea allergy dermatitis
- The successive feeding activity of fleas on dogs may elicit a hypersensitivity skin disorder known as flea allergy dermatitis (FAD) Treatment of dogs with **CERTIFECT** kills fleas and may reduce the incidence of FAD
- **CERTIFECT** is useful for dogs susceptible to flea allergy dermatitis (FAD)
- Regular use of **CERTIFECT** breaks the flea life cycle
- Prevents development of all flea stages for at least 1 month (30 days)
- Convenient (easy to apply) topical treatment (with [patented] applicator)(that allows application down to the skin)
- (Patented) dual applicator (trademark) for easy application directly to the skin
- Prevents development of fleas, flea eggs, flea larvae and pupae (for one month or more)
- (Available)(from)(through)(Sold by)(veterinarians)(a licensed veterinarian)(a licensed veterinary professional)
- Quick drying
- Non greasy
- (For year long control)(Apply **CERTIFECT**)(monthly)(year round)(for optimum control of) (fleas)(and)(ticks)(following your veterinarian s advice)

- [Starts rapidly killing 6 types of ticks in (as little as) 6 hours][Starts rapidly killing 6 species of ticks in (as little as) 6 hours](Kills) (Protects against)(and controls)(the following ticks)(including) Black legged ticks (*Ixodes scapularis* *Ixodes pacificus*) (which may transmit Lyme disease), Brown dog ticks (*Rhipicephalus sanguineus*) (which may transmit *Ehrlichia canis*) American dog ticks (*Dermacentor variabilis*) (which may transmit Rocky Mountain Spotted Fever) Lone star ticks (*Amblyomma americanum*) (which may transmit *Ehrlichia chaffeensis*) Gulf Coast ticks (*Amblyomma maculatum*), Wood ticks (*Ixodes ricinus*), Chewing lice (*Trichodectes canis*) Sarcoptic mange mites (*Sarcoptes scabiei* var *canis*) and all stages of (*Ctenocephalides felis* and *Ctenocephalides canis*) fleas
- Amitraz provides control of (ticks)(and)(sarcoptic mange mites) by affecting octopamine receptors
- Kills (newly emerged) fleas (before they lay eggs) for up to 12 weeks
- Kills ticks (for) 1 month
- Easy spot on (topical) application
- (S) methoprene is an insect growth regulator which prevents development of all flea stages
- Using the (patented)(trademark) dual applicator, **CERTIFECT** is specially designed to spread over the dog s body providing effective control of fleas and ticks
- Protects for (at least) one month
- (Quick onset of activity starting in)(Starts killing ticks)(within)(in) 6 hours
- Persistent (sustained) efficacy through 30 days
- Prevents reinfestation (of fleas)(of ticks) for up to one month
- Monthly treatment is recommended for optimal control and prevention of fleas and ticks
- Guaranteed effective for (at least) 1 month
- Once monthly application
- (Convenient)(to use)(Easy to apply) spot on application
- Pleasant smell
- Kills fleas that may transmit disease including (bartonellosis) and (tapeworm disease)
- Proven treatment technology for (the control of) flea(s)(infestations) (ticks) (and chewing lice)
- S methoprene (arrests the development of immature flea stages)(metabolically attacks fleas)
- **CERTIFECT** uses (different)(multiple) modes of action to kill (ticks)
- The small amount of amitraz potentiates fipronil efficacy to (rapidly) kill ticks (faster starting in 6 hours)(in 18 hours)
- **CERTIFECT** starts (rapidly)(quickly)(killing)(kills) all stages of ticks starting in (as little as) 6 hours (in 18 hours), including but not limited to deer ticks brown dog ticks American dog ticks and lone star ticks
- (**CERTIFECT** is brought to you)(by)(from)(the makers of **FRONTLINE®**)
- **CERTIFECT** (has)(is a) low odor (formulation)
- **CERTIFECT** contains 80 160 320 and 480 mg of amitraz in the small medium large and x large pipettes respectively
- **CERTIFECT** provides 75 mg/ml of amitraz when applied to the dog (at a dose of 8 mg/kg)
- **CERTIFECT** provides 6 4% Fipronil when applied in the total volume of [(1 07 ml)(2 14 ml)(4 28 ml)(6 42 ml)]
- **CERTIFECT** provides 5 8% (S) Methoprene when applied in the total volume of [(1 07 ml)(2 14 ml)(4 28 ml)(6 42 ml)]
- **CERTIFECT** provides 7 6% Amitraz when applied in the total volume of [(1 07 ml)(2 14 ml)(4 28 ml)(6 42 ml)]
- (S) methoprene is an insect growth regulator which kills flea eggs and larvae