

**BORA-CARE™  
MANUFACTURING CONCENTRATE**

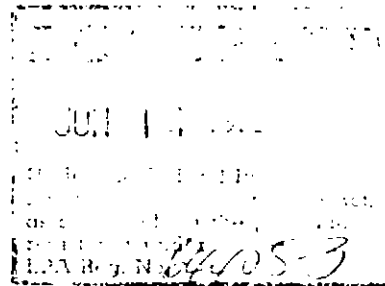
**Termiticide, Insecticide and Fungicide Concentrate**

**An Insecticide for Manufacturing/Formulating Use Only**

**For Formulation Into End-Use Pesticides For the Prevention and Control of  
Termites, Carpenter Ants, Wood Destroying Beetles and Decay Fungi**

|  |  |       |
|--|--|-------|
| <b>ACTIVE INGREDIENT:</b>  |  |       |
| Disodium Octaborate Tetrahydrate (Na <sub>2</sub> B <sub>8</sub> O <sub>13</sub> ·4H <sub>2</sub> O) |  | 40.0% |
| <b>INERT INGREDIENTS</b>   |  | 60.0% |

Density: 11.51 pounds per gallon



**Keep Out of Reach of Children**

**CAUTION**

**See other panels for additional precautionary statements.**

**EPA Reg. No. 64405-\_\_ EPA Est. 64405-TN-1**

**NET CONTENTS: \_\_ GALLONS (\_\_ LITERS)**

**NET WEIGHT: \_\_ POUNDS (\_\_ KILOS)**

**PRECAUTIONARY STATEMENTS**  
**Hazards to Humans & Domestic Animals**

**CAUTION:** Harmful if inhaled. Avoid breathing vapors or spray mist. Avoid contact with skin, eyes or clothing. Avoid contamination of food and feed. Do not leave container where children or animals may gain access.

**Statement of Practical Treatment**

**If Inhaled:** Remove victim to fresh air. Apply artificial respiration if indicated. Contact a physician if warranted. **If In Eyes:** Flush with plenty of water. Get medical attention if irritation persists. **If On Skin:** Remove contaminated clothing and wash skin with soap and water. Wash clothing prior to reuse.

**IN CASE OF A MEDICAL EMERGENCY** involving this product call (615) 544-9400 or your local Poison Control Center.

**Environmental Hazards**

BORA-CARE MANUFACTURING CONCENTRATE and solutions carelessly spilled or applied to cropland or growing plants, including trees and shrubs, may kill or seriously retard plant growth. Cover plants and nearby soil with plastic to avoid contamination. Do not apply directly to water. Do not contaminate water when disposing of equipment washwaters.

**DIRECTIONS FOR USE**

It is a violation of Federal law to use this product in a manner inconsistent with its labeling.

This concentrate is for formulating use only. Formulators using this product are responsible for obtaining EPA registration of their products.

**SAFE HANDLING PROCEDURES**

The use of chemical splash goggles and solvent resistant gloves is advised when working with this product. Spills and over-spray may be cleaned with a damp cloth or absorbed with appropriate materials. When working with this product in confined spaces, it is recommended that ventilation or an exhaust system be provided. If this is impractical, the use of a NIOSH approved respirator designed for protection from organic vapors is recommended. (Refer to the BORA-CARE MANUFACTURING CONCENTRATE Material Safety Data Sheet for additional health and safety information.)

**GENERAL INFORMATION**

BORA-CARE MANUFACTURING CONCENTRATE, when formulated into end-use products, is an innovative termiticide, insecticide and fungicide that eliminates existing infestations and provides long term protection against:

- Subterranean Termites: Reticulitermes, Heterotermes
- Formosan Termites: Coptotermes
- Dampwood Termites: Zootermopsis, Neotermes
- Drywood Termites: Kaloterms, Incisitermes
- Powder Post Beetles: Lyctidae, Bostrichidae
- Anobiid Beetles: Anobiidae
- Old House Borers, Longhorn Beetles: Cerambycidae, Hylotrupes
- Ambrosia Beetles: Platypodidae, Scolytidae
- Carpenter Ants: Camponotus
- Brown Rot, White Rot and Wood Decay Fungi including:

- |                            |                            |
|----------------------------|----------------------------|
| Antrodia sinuosa           | Phialophora heteromorpha   |
| Antrodia xantha            | Phialophora lignicola      |
| Aspergillus amstelodarni   | Phialophora lueto-olivacea |
| Aspergillus niger          | Phoma herbarum             |
| Aureobasidium pullulans    | Phoma lanosa               |
| Basidiomycete              | Polyporus abietinus        |
| Bisporia pusillas 132      | Polyporus rugulosus        |
| Ceratocystis pluriannulata | Polyporous sulphureus      |
| Ceratocystis picea         | Polyporus tomentosus       |
| Chaetomium globosum keinze | Polyporous versicolor      |
| Coniophora cerebella       | Polystictus versicolor     |
| Coniophora olivacea        | Poria carbonica            |
| Coniophora puteana         | Poria incrassata           |

Fomes lividus  
 Fomes officinalis  
 Fomes pini  
 Fomes pinicola  
 Gloeophyllum abietinum  
 Gloeophyllum sepiarium  
 Gloeophyllum trabeum  
 Hericium abietis  
 Heterobesidium annosum  
 Lentinus lepideus  
 Lenzites trabea  
 Merulius lacrymans  
 Ophiostoma coeruleum  
 Paecilomyces varioti  
 Phialophora sp.  
 Phialophora fastigiata  
 Phialophora haffmannii

Poria monticola 698  
 Poria nigrescens 4856  
 Poria placenta  
 Poria subacida  
 Poria vaillantii  
 Poria vaporaria  
 Poria xantha  
 Rhinocladiella sp.  
 Scerolophoma pityophila  
 Serpula lacrymans  
 Sistotrema brinkmenii  
 Stachbotrys atra corda  
 Stereum abietinum  
 Torulla sp.  
 Trametes lilacino-gliva  
 Trametes serialis  
 Tricholcladium asperum

**STORAGE AND DISPOSAL**

Do not contaminate water, food or feed by storage or disposal.

**STORAGE:** Store in a dry place. Do not store where children or animals may gain access. Do not freeze.  
**PESTICIDE DISPOSAL:** Do not contaminate water when disposing of equipment washwaters. Wastes resulting from the use of this product may be disposed of on site or at an approved waste disposal facility. **CONTAINER DISPOSAL:** Triple rinse (or equivalent). Then offer for recycling or reconditioning, or puncture and dispose of in a sanitary landfill, or incineration, or if allowed by state and local authorities, by burning. If burned, stay out of smoke.

**NOTICE**

Read and understand the entire label before using. Use only according to label directions.

Before buying or using this product, read "WARRANTY LIMITATIONS AND DISCLAIMER" statement found elsewhere on this label. If terms are unacceptable, return unopened package to seller for full refund of purchase price. Otherwise, use by the buyer or any other user constitutes acceptance of the terms under 'WARRANTY LIMITATIONS AND DISCLAIMER.

**WARRANTY LIMITATIONS AND DISCLAIMER**

Because of varying conditions affecting use and application, manufacturer warns buyer that these may impair or vary the results or effects of the use of this product. In any event, complete prevention of decay or insect infestation is not guaranteed. Neither the manufacturer nor seller shall be liable in respect to any injury or damage suffered by reason of the use of this product for a purpose not indicated by the label or when used contrary to the directions or instructions hereon nor with respect to breach of any warranty not expressly specified herein. Buyer accepts this material subject to these terms and assumes all risk of usage and handling except when used or handled in accordance with this label.

BORA-CARE™ - Registered trademark of Nisus Corporation

**NISUS CORPORATION**  
**Cherokee Place**  
**101 Concord Street, North**  
**Knoxville, TN 37919**