



UNITED STATES ENVIRONMENTAL PROTECTION AGENCY  
WASHINGTON, DC 20460

OFFICE OF CHEMICAL SAFETY  
AND POLLUTION PREVENTION

May 31, 2017

Anna Crowder  
Regulatory Affairs Specialist  
Nisus Corporation  
100 Nisus Drive  
Rockford, TN 37853

Subject: Label Amendment – Revised directions for use  
Product Name: REDZONE BAIT  
EPA Registration Number: 64405-2  
Application Date: 12/20/2016  
Decision Number: 524528

Dear Ms. Crowder:

The amended label referred to above, submitted in connection with registration under the Federal Insecticide, Fungicide and Rodenticide Act, as amended, is acceptable. This approval does not affect any conditions that were previously imposed on this registration. You continue to be subject to existing conditions on your registration and any deadlines connected with them.

A stamped copy of your labeling is enclosed for your records. This labeling supersedes all previously accepted labeling. You must submit one copy of the final printed labeling before you release the product for shipment with the new labeling. In accordance with 40 CFR 152.130(c), you may distribute or sell this product under the previously approved labeling for 18 months from the date of this letter. After 18 months, you may only distribute or sell this product if it bears this new revised labeling or subsequently approved labeling. "To distribute or sell" is defined under FIFRA section 2(gg) and its implementing regulation at 40 CFR 152.3.

Should you wish to add/retain a reference to the company's website on your label, then please be aware that the website becomes labeling under the Federal Insecticide Fungicide and Rodenticide Act and is subject to review by the Agency. If the website is false or misleading, the product would be misbranded and unlawful to sell or distribute under FIFRA section 12(a)(1)(E). 40 CFR 156.10(a)(5) list examples of statements EPA may consider false or misleading. In addition, regardless of whether a website is referenced on your product's label, claims made on the website may not substantially differ from those claims approved through the registration process. Therefore, should the Agency find or if it is brought to our attention that a website contains false or misleading statements or claims substantially differing from the EPA approved registration, the website will be referred to the EPA's Office of Enforcement and Compliance.

Your release for shipment of the product constitutes acceptance of these conditions. If these conditions are not complied with, the registration will be subject to cancellation in accordance

Page 2 of 2  
EPA Reg. No. 64405-2  
Decision No. 524528

with FIFRA section 6. If you have any questions, you may contact Elizabeth Fertich at 703-347-8560 or via email at [fertich.elizabeth@epa.gov](mailto:fertich.elizabeth@epa.gov).

Sincerely,

A handwritten signature in blue ink, appearing to read "Gene Benbow".

Gene Benbow, Acting Product Manager 4  
Invertebrate & Vertebrate Branch 1  
Registration Division (7505P)  
Office of Pesticide Programs

# Redzone Bait

*{ABNs: NiBan Granular Bait, NiBan-FG Fine Granular Bait and BugBait}*

ACCEPTED

05/31/2017

Under the Federal Insecticide, Fungicide and Rodenticide Act as amended, for the pesticide registered under EPA Reg. No. 64405-2

Active Ingredient:  
 Orthoboric Acid ..... 5%  
 Other Ingredients ..... 95%  
 Total ..... 100%

**Keep Out of Reach of Children**  
**CAUTION**

See Side Panel [Booklet] [Label] for First Aid [Additional Precautionary Statements] [and] [Complete Directions for Use.] [Peel Here] [Read All Instructions Inside Before Using]

[Si usted no entiende la etiqueta, busque a alguien para que se la explique a usted en detalle. (If you do not understand the label, find someone to explain it to you in detail.)]

U.S. Patent Nos. \_\_\_\_\_  
 EPA Reg. No. 64405-2      EPA Est. \_\_\_\_\_

Net Weight: \_\_\_\_ pounds [\_\_\_\_ ounces] [(\_\_\_\_ kg)]

Made in the U.S.A.

**Nisus Corporation**  
 100 Nisus Drive; Rockford, TN USA 37853  
 (800) 264-0870  
*{Logo: Nisus Corporation}*  
**The World's Leader in Borate Technology**

*{Side Panel(s) / Booklet}*

### FIRST AID

<b>If in Eyes:</b>	<ul style="list-style-type: none"> <li>Hold eye open and rinse slowly and gently with water for 15-20 minutes. Remove contact lenses, if present, after the first 5 minutes, then continue rinsing.</li> <li>Call a poison control center or doctor for treatment advice.</li> </ul>
<b>If on Skin:</b>	<ul style="list-style-type: none"> <li>Take off contaminated clothing.</li> <li>Immediately rinse skin with plenty of water for 15 – 20 minutes.</li> <li>Call a poison control center or doctor for treatment advice.</li> </ul>
Have the product container or label with you when calling a poison control center or doctor or going for treatment. You may also contact 1-800-424-9300 for emergency medical treatment information.	

## PRECAUTIONARY STATEMENTS

### Hazards to Humans & Domestic Animals

**CAUTION:** Harmful if absorbed through skin. Causes moderate eye irritation. Avoid contact with skin, eyes or clothing.

### Personal Protective Equipment (PPE)

Applicators must wear: Long pants; waterproof gloves; and shoes plus socks. Follow manufacturer's instructions for cleaning/maintaining PPE. If no such instructions for washables are given, use detergent and hot water.

### User Safety Recommendations

#### Users should:

- Wash hands before eating, drinking, chewing gum, using tobacco or using the toilet.
- Remove clothing immediately if pesticide gets inside; then thoroughly wash and put on clean clothing.
- Immediately remove PPE after handling this product. Wash the outside of gloves before removing. As soon as possible, thoroughly wash and change into clean clothing.

### Environmental Hazards

Do not apply directly to water, to areas where surface water is present or to intertidal areas below the mean high-water mark. Do not contaminate water when disposing of equipment washwaters or rinsate.

## DIRECTIONS FOR USE

It is a violation of Federal law to use this product in a manner inconsistent with its labeling.

### Notice

Read and understand the entire label before using. Use only according to label directions. Before buying or using this product, read *Warranty Disclaimer* and *Limitation of Remedies* statements found elsewhere on this label. If terms are unacceptable, return unopened package to seller for full refund of purchase price. Otherwise, use by the buyer or any other user constitutes acceptance of the terms under *Warranty Disclaimer* and *Limitation of Remedies*.

Not for use on plants or turf being grown for sale on sod farms, commercial greenhouses or nurseries, or for commercial seed production, or for research purposes. For use on plants or turf intended for aesthetic, recreational purposes or climate modification and being grown in interior plantscapes, ornamental gardens or parks, recreational areas, or lawns or grounds.

### General Information

This product is a ready-to-use, weather/moisture resistant [rainfast] bait that controls and kills ants (except fire ants), cockroaches, crickets, earwigs, silverfish, snails and slugs, specifically:

**Ants:** Argentine, carpenter, thief, pharaoh, little black, pavement, odorous house and crazy ants

**Cockroaches:** Asian, American, brown, brownbanded, smokybrown, German and oriental cockroaches

**Crickets:** Camel, house, field and mole crickets

**Snails and Slugs**

### European Earwigs

Do not contaminate this product with other pesticides. If this product becomes contaminated with another pesticide it will lose its effectiveness.

Do not apply directly to food and avoid contamination of feed and foodstuff. In commercial food handling facilities, cover or remove any food during application. In food handling and other areas, bait may be placed in removable trays [{brand name} bait stations]. Always record the number and location of trays [bait stations]. This product is designed to be used as a residual treatment in an Integrated Pest Management program incorporating good sanitation practices.

This product may be applied in appropriate areas with a power duster (Except in California). Consult equipment manufacturer for recommended settings.

Keep children and pets out of treatment area until application has been completed. Do not treat pets with this product. Avoid over-application around ornamental plants and fish ponds. Do not apply this product in combination with fertilizers, other pesticides or other biologically-active materials.

### Application Instructions

**To Control and Kill Ants (Except Fire Ants), Cockroaches, Crickets, Mole Crickets, Snails and Slugs on Campgrounds\*, Cemeteries\*, Greens of Golf Courses, Home Lawns\*, Lawns\*, Ornamental Turf\*, Parks\*, Picnic Areas\*, Playing Fields\* and Recreational Turf\*:** [Use a mechanical spreader to] Apply bait evenly to affected areas at the rate of 2 pounds per 1,000 square feet (3.2 ounces or 2/3 cup per 100 square feet) or 90 pounds per acre. **When treating for mole crickets:** Thoroughly irrigate treatment areas in the late afternoon prior to application. For maximum effectiveness, do not irrigate treated area immediately after application. (\* = *this site not applicable in CA*)

**Exterior Baiting to Control and Kill Snails and Slugs in Flower Gardens and Around Ornamentals, Groundcovers and Shrubs:** At the beginning of the spring planting season (before damage occurs), broadcast 6 ounces per 100 square feet in areas likely to be infested with snails and slugs. It is best to apply the bait during early morning or evening when slugs and snails are present and eating. Reapply every four weeks for satisfactory control.

**To Control and Kill Snails and Slugs in Ornamental Home Greenhouses and Lath Houses:** Evenly distribute granules on and under benches at the rate of 6 ounces per 100 square feet. Do not place in flats or pots.

**To Control and Kill Snails and Slugs in Interiorscapes or Ornamental Gardens:** Evenly apply bait to soil at a rate of 6 ounces per 100 square feet no more than once every 4 to 6 weeks.

**Exterior Baiting to Control and Kill Ants (Except Fire Ants), Including Carpenter Ants, Around Apartment Buildings, Food Processing Plants, Garages, Homes, Hospitals, Hotels, Kennels, Motels, Pet Stores, Public & Private Institutions, Recreational Vehicles, Restaurants, Schools, Supermarkets, Warehouses and Other Structures:** Treat exterior perimeter areas of structure in a band 2 to 4 feet wide at a rate of 6 ounces per 100 square feet. Also apply product in a 2 to 4 foot band around all trees, stumps, firewood piles and other locations where carpenter ants may nest. If the nest is located in a hollow tree or stump, apply 1/2 to 1 ounce of product directly into the cavity. Apply along ant trails and in areas where ant activity has been noted.

**To Control and Kill Ants (Except Fire Ants), Cockroaches, Crickets, Earwigs and Silverfish Within and Around the Exterior of Structures such as Apartment Buildings, Food Processing Plants (Non-Food Areas), Garages, Homes, Hospitals, Hotels, Kennels, Motels, Pet Stores, Public & Private Institutions, Recreational Vehicles, Restaurants (Non-Food Areas), Schools, Sewers, Stores, Supermarkets and Warehouses:** Apply at a rate of 4 pounds per 1,000 square feet (6 ounces or 1.25 [1-1/4] cups per 100 square feet) [4 ounces bait per 67 square feet] of surface area. Spread evenly in crawl spaces, attics, drop ceilings and cellars with dirt or gravel floors.

Concentrate application in areas where insect activity is most prevalent. In attics, be sure to apply in eaves and access drains. In warehouses, garages and basements, concentrate application along walls and baseboards. This product may also be applied in inaccessible areas such as cracks and crevices where insects may hide. Any bait visible after application must be brushed into cracks and crevices or removed. Apply in pits of elevator, dumbwaiter and trash chute shafts. Apply under and behind pallets and boxes in storerooms. Bait may also be placed [Place bait] in removable trays [{brand name} bait stations] in areas accessible to insects but inaccessible to children and pets. Always record the location and number of trays [bait stations]. Regularly inspect trays [bait stations] and replace bait as needed. In sewers, apply along ledges and around manhole entrances. Treat exterior perimeter building walls in a band approximately 2 feet wide and scatter bait in flower beds, leaf litter, wood piles, trash cans and refuse areas. Reapply as necessary.

**For Treating New Construction:** Apply in wall voids and other areas where insects may hide.

**For Perimeter Treatments:** Spread bait at a rate of 6 ounces or 1.25 [1-1/4] cups per 100 square feet in a band at least 2 feet wide around foundations, patios, driveways, sidewalks, entrances to homes and buildings, or other areas where insects are present. Apply around landscape lighting, floodlights, street lamps or other exterior fixtures and scatter bait in flower beds, leaf litter, wood piles, trash cans and refuse areas. Reapply as necessary.

**For Treating Ant Mounds:** Apply ½ to 1 ounce of this product around all ant mounds. Supplement by broadcast application in immediate area and along ant trails and in areas where ant activity has been noted.

**To Control and Kill Ants (Except Fire Ants), Cockroaches, Crickets, Earwigs and Silverfish In Aircraft, Apartment Buildings, Apartments, Boats, Buses, Camps\*, Factories, Food Handling Establishments, Food Processing Plants, Garages, Grocery Stores, Homes, Hospitals, Hotels, Industrial Plants, Kennels, Libraries, Markets, Military Bases, Mobile Homes, Motels, New Construction, Nursing Homes, Offices, Pet Stores, Private & Public Institutions, Recreational Vehicles, Restaurants, Schools, Sewers, Ships, Supermarkets, Theaters, Trains, Trucks, Utilities, Warehouses, Yachts and Zoos:**

**Food area application limited to only crack and crevice treatment [(see following section)].** Apply only in areas inaccessible to children and pets. Avoid contamination of feed and foodstuffs. Apply by scattering/dusting under and behind refrigerator, cooler, stove, sink, dishwasher, washing machine and dryer tubs; counters; into openings around drains, water pipes and electrical conduits; and in cracks and crevices along baseboards and corners of cabinets, counter tops, cupboards and closets. Remove all lower drawers in kitchen and bathroom cabinets, bedroom dressers and chests of drawers, then scatter/dust in drawer wells. Bait may also be applied into and around areas of insect infestation of **above-ground transformers, in-ground utility boxes, pedestal boxes and vending machines.** Any bait visible after application must be brushed into cracks and crevices or removed. Reapply as necessary. Bait may also be placed [Place bait] in removable trays [{brand name} bait stations] in areas accessible to insects but inaccessible to children and pets. Always record the location and number of trays [bait stations]. Regularly inspect trays [bait stations] and replace bait as needed. (\* = this site not applicable in CA)

**Crack and Crevice Applications In Aircraft, Apartment Buildings, Apartments, Boats, Buses, Camps\*, Factories, Food Handling Establishments, Food Processing Plants, Garages, Grocery Stores, Homes, Hospitals, Hotels, Industrial Plants, Kennels, Libraries, Markets, Military Bases, Mobile Homes, Motels, New Construction, Nursing Homes, Offices, Pet Stores, Private & Public Institutions, Recreational Vehicles, Restaurants, Schools, Sewers, Ships, Supermarkets, Theaters, Trains, Trucks, Utilities, Warehouses, Yachts and Zoos:** Crack and crevice applications may be made using most types of dust applicators. A bellows type duster works best. Insert stem into gaps, cracks and crevices and apply 2 to 6 puffs per lineal foot, depending upon the severity of the infestation. Any bait visible after application must be brushed into cracks and crevices or removed. Drill small holes to gain access into wall voids and under cabinets. This product may also be applied in appropriate areas with a power duster (Except in California). Consult equipment manufacturer for recommended settings.

### Application Sites and Directions:

1. Apply under and behind appliances in kitchens, bathrooms and utility rooms (remove kick plates if possible).
2. Kitchen and bathroom cabinets and vanities often have a space between the floor and the bottom drawer or cabinet. If a gap exists along the top of the kickplate, dust this product into the void area. If no gaps are present, drill a small hole every two feet along the kickplate drilling at least one hole under each cabinet and apply this product through the holes.
3. Apply in voids around plumbing pipes behind water heaters and under sinks in kitchens, bathrooms, showers and utility rooms. Pull back escutcheon plates around pipes to allow access to the void.
4. Remove electrical wall socket and switch covers and dust product around boxes and into voids. Do not apply product directly into electrical switch and outlet boxes.
5. Cracks or spaces between the wall and doorframes, cabinets, counter tops, molding or baseboards provide excellent hiding places for roaches and ants. Dust a small amount of this product into these areas wherever possible.
6. Apply under and behind vending machines. If access can be gained to the interior of the machine, apply around the interior base being careful not to contaminate any foodstuffs.  
(\* = this site not applicable in CA)

**To Control and Kill Cockroaches, Crickets, Ants, Earwigs and Silverfish in Federally-Inspected (USDA) Meat And Poultry Plants:** For application only in inedible product areas and non-processing areas as a crack and crevice treatment. Apply to cracks and crevices in areas such as around baseboards and in closets; beneath cabinets and appliances, in and around waste containers and into openings around drains, water pipes and electrical conduits. Any bait visible after application must be brushed into cracks and crevices or removed. Avoid contamination of feed and foodstuffs. Bait stations may be used. Always record the number and location of bait stations. Regularly inspect bait stations and replace bait as needed. This product is best used as a supplemental residual treatment preceded by approved spray and good sanitation practices.

*{For product packaged in non-refillable containers [bags]- 1 lb bottle, 2.5 lb can, 3 lb can, 4 lb jug, 4 lb pail, 5 lb bag, 20 lb pail, 40 lb box, 250 lb mini-sack, 1500 lb super sack:}*

#### STORAGE & DISPOSAL

Do not contaminate water, food or feed by storage or disposal.

**Pesticide Storage:** Store in a dry place. Do not store where children or animals may gain access. **Pesticide Disposal:** Wastes resulting from the use of this product may be disposed of on site or at an approved waste disposal facility. **Container Disposal:** Non-refillable container [bag]; do not reuse or refill this container [bag]. Completely empty container [bag] [into application equipment], then offer for recycling, if available; otherwise dispose of empty container [bag] in a sanitary landfill or by incineration.

*{Per PR Notice 2007-4 the batch code/lot number will appear on the label or container.}*

*{For product packaged in refillable containers [bags] - 1 lb bottle, 4 lb jug, 4 lb pail, 20 lb pail, 250 lb mini-sack, 1500 lb super sack:}*

#### STORAGE & DISPOSAL

Do not contaminate water, food or feed by storage or disposal.

**Pesticide Storage:** Store in a dry place. Do not store where children or animals may gain access. **Pesticide Disposal:** Wastes resulting from the use of this product may be disposed of on site or at an approved waste disposal facility. **Container Disposal:** Refillable container [bag]; refill this container [bag] with only pesticide. Do not reuse this container for any other purpose. Cleaning before refilling is the responsibility of the refiller. Cleaning the container before final disposal is the responsibility of the person disposing of the container. To clean the container before final disposal, empty the remaining contents from this container into application equipment. Fill the container about 10 percent full with water. Agitate vigorously or recirculate water with the pump for 2 minutes. Pour or pump rinsate into application equipment or rinsate collection system. Repeat this rinsing procedure two more times.

*{For product packaged in containers [bags] with only residential/household uses – 1 lb bottle, 2.5 lb can, 3 lb can, 4 lb jug, 4 lb pail:}*

#### STORAGE AND DISPOSAL

**Pesticide Storage:** Store in a dry place. Do not store where children or animals may gain access. **Disposal:** Non-refillable container [bag]; do not reuse or refill this container [bag]. **If empty:** Offer for recycling, if available; otherwise place in trash. **If partly filled:** Call your local solid waste agency for disposal instructions. Never place unused product down any indoor or outdoor drain.

*{Per PR Notice 2007-4 the batch code/lot number will appear on the label or container.}*

#### WARRANTY DISCLAIMER

To the extent not prohibited by applicable law, Manufacturer warrants that this product conforms to the chemical description on the label and is reasonably fit for the purposes stated on the label when used in strict accordance with the directions, subject to the inherent risks set forth below. To the extent not prohibited by applicable law, **MANUFACTURER MAKES NO OTHER EXPRESS OR IMPLIED WARRANTY OF MERCHANTABILITY, FITNESS FOR A PARTICULAR PURPOSE OR ANY OTHER EXPRESS OR IMPLIED WARRANTY.**

#### Inherent Risks of Use

The directions for use are believed to be adequate and must be carefully followed. It is impossible to eliminate all risks associated with use of this product. Lack of performance or other unintended consequences may result because of such factors as use of the product contrary to label instructions, abnormal conditions, the presence of other materials, climatic conditions or the manner of application, all of which are beyond the control of the Manufacturer. To the extent not prohibited by applicable law, the buyer/user assumes all such risks.

#### Limitation of Remedies

To the extent not prohibited by applicable law the exclusive remedy for losses or damages resulting from this product (including claims based on contract, negligence, strict liability or other legal theories) shall be limited to, at Manufacturer's election, one of the following:

1. Refund of purchase price paid by buyer or user for product bought, or
2. Replacement of amount of product used.

To the extent not prohibited by applicable law: a) Manufacturer shall not be liable for losses or damages resulting from handling or use of this product unless Manufacturer is promptly notified of such loss or damage in writing; and b) **TO THE EXTENT NOT PROHIBITED BY APPLICABLE LAW, IN NO CASE SHALL MANUFACTURER BE LIABLE FOR CONSEQUENTIAL OR INCIDENTAL DAMAGES OR LOSSES, INCLUDING WITHOUT LIMIT, HEALTH RELATED DAMAGES OR INJURIES.**

The terms of this **Warranty Disclaimer** and **Limitation of Remedies** cannot be varied by any written or verbal statements or agreements. No employee or sales agent of Manufacturer or the seller is authorized to vary or exceed the terms of this **Warranty Disclaimer** or **Limitation of Remedies** in any manner.

It is not intended that this product be used to practice any applicable patent whether mentioned or not, without procurement of a license, if necessary, from the owner, following investigation by the user.

*{Brand Name}* and Nisus Corporation are [Registered] Trademarks of Nisus Corporation.

© \_\_\_\_\_

[ ] Denotes alternate/optional language

{ } Denotes language that does not appear on market label



*{For product packaged in pre-filled/non-refillable bait stations (copack)}*  
*{Bait Station label}*

## Redzone Bait

Controls Ants (Except Fire Ants), Cockroaches, Earwigs and Silverfish  
Keep Out of Reach of Children

### CAUTION

See box for First Aid, additional Precautionary Statements and complete Directions for Use.  
Save box for label reference.

**Active Ingredient:**

Orthoboric Acid .....	5%
<b>Other Ingredients</b> .....	<u>95%</u>
Total .....	100%

EPA Reg. No. 64405-2    EPA Est. 64405-1  
U.S. Patent Nos. \_\_\_\_\_

Nisus Corporation  
100 Nisus Drive  
Rockford, TN USA 37853

Net Contents: 1.25 oz. (0.035 kg) [1.75 oz. (0.0496)]

*{Box Flap}*

Not For Individual Sale

*{Box label}*

## Redzone Bait

A Weather/Moisture Resistant Bait to Kill and Control Ants (Except Fire Ants), Cockroaches, Earwigs and Silverfish

### For Both Interior and Exterior Use

For Use In and Around the Following Structures *{select from use sites listed in Directions for Use}*

For outdoor use on *{select from use sites listed in Directions for Use}*

**Active Ingredient:**

Orthoboric Acid .....	5%
<b>Other Ingredients</b> .....	<u>95%</u>
Total 100%	

EPA Reg. No. 64405-2    EPA Est. 64405-1

Keep Out of Reach of Children

### CAUTION

### First Aid

<b>If in Eyes:</b>	<ul style="list-style-type: none"><li>• Hold eye open and rinse slowly and gently with water for 15-20 minutes. Remove contact lenses, if present, after the first 5 minutes, then continue rinsing.</li><li>• Call a poison control center or doctor for treatment advice.</li></ul>
<b>If on Skin:</b>	<ul style="list-style-type: none"><li>• Take off contaminated clothing.</li><li>• Immediately rinse skin with plenty of water for 15 – 20 minutes.</li><li>• Call a poison control center or doctor for treatment advice.</li></ul>
Have the product container or label with you when calling a poison control center or doctor or going for treatment.	

### PRECAUTIONARY STATEMENTS

[See below [side panel] for First Aid, additional Precautionary Statements and complete Directions for Use.]

#### Hazards to Humans & Domestic Animals

**CAUTION:** Harmful if absorbed through skin. Causes moderate eye irritation. Avoid contact with skin, eyes or clothing. Wash hands before eating, drinking, chewing gum, using tobacco or using the toilet.

#### Personal Protective Equipment

Applicators must wear: Long pants; chemical-resistant or waterproof gloves; and shoes plus socks. Follow manufacturer's instructions for cleaning/maintaining PPE. If no such instructions for washables are given, use detergent and hot water.

#### Environmental Hazards

Do not apply directly to water, to areas where surface water is present or to intertidal areas below the mean high-water mark. Do not contaminate water when disposing of equipment washwaters or rinsate.

### DIRECTIONS FOR USE

It is a violation of Federal law to use this product in a manner inconsistent with its labeling.

#### General Information

This product is a ready-to-use, weather/moisture-resistant bait that controls and kills ants, cockroaches, earwigs and silverfish, specifically: **Ants:** Argentine, carpenter, thief, pharaoh, little black, pavement, odorous house and crazy ants; **Cockroaches:** Asian, American, brown, brownbanded, smokybrown, German and oriental cockroaches; **European Earwigs.**

Do not contaminate this product with other pesticides. If this product becomes contaminated with another pesticide it will lose its effectiveness. Do not apply directly to food and avoid contamination of feed and foodstuff. In commercial food handling facilities, cover or remove any food during application. In food handling and other areas, record the number and location of bait stations. This product is designed to be used as a residual treatment in an Integrated Pest Management program incorporating good sanitation practices. Do not treat pets with this product. Place stations in areas accessible to insects but inaccessible to children and pets.

#### Application Instructions

**To Control and Kill Ants (Except Fire Ants), Cockroaches, Earwigs and Silverfish Within and Around the Exterior of Structures** such as aircraft, airports, apartment buildings, apartments, boats, buses, campgrounds, camps, cemeteries, factories, Federally-inspected (USDA) meat/ poultry plants, food handling establishments, food processing plants, garages, golf courses, grocery stores, home lawns, homes, hospitals, hotels, industrial plants, industrial sites, kennels, lawns, libraries, markets, military bases, mobile homes, motels, non-grazed pasture/rangeland, nursing homes, offices, ornamental turf, parks, pet stores, picnic areas, playing fields, private/public institutions, recreational turf, recreational vehicles, restaurants, schools, ships, stores, supermarkets, theaters, trains, trucks, utilities (such as in-ground utility boxes, pedestal boxes and above-ground transformers), vending machines, warehouses, yachts, zoos and other structures.

Hold the pre-filled bait station level and peel back clear {or other appropriate descriptive term} seal to expose entry point to bait. Monitor bait station and replace station when bait is depleted or every three months. To prevent reinfestation and where infestation is great, maintain an uninterrupted supply of bait.

#### For Ants (Except Fire Ants)

**Outdoors:** Place bait stations near ant trails and areas where ants may enter structures. Place enough stations to sufficiently control the ant population. **Indoors:** Place stations near ant activity (for example, along baseboards in closets, behind or in cabinets, etc.).

#### For Cockroaches and Other Listed Pests

**Outdoors:** Place bait station near locations of pest sightings and areas where pests may find harborage or gain entry into the structures. **Indoors:** Place bait stations where pests or their signs have been seen or observed (for example, in attics, in cabinets, behind bookshelves, etc.).

*{1.25, 1.75 or 3 oz bait station.}*

#### STORAGE & DISPOSAL

Do not contaminate water, food or feed by storage or disposal.

**Pesticide Storage:** Store in a dry place. Do not store above 100°F or where children or animals may gain access.

**Pesticide Disposal:** Wastes resulting from the use of this product may be disposed of on site or at an approved waste disposal facility. **Container Disposal:** Non-refillable container; do not reuse or refill this container. Offer container for recycling, if available; otherwise dispose of empty container in a sanitary landfill or by incineration.

*{Per PR Notice 2007-4 the batch code/lot number will appear on the label or container.}*

#### WARRANTY DISCLAIMER

To the extent not prohibited by applicable law, Manufacturer warrants that this product conforms to the chemical description on the label and is reasonably fit for the purposes stated on the label when used in strict accordance with the directions, subject to the inherent risks set forth below. To the extent not prohibited by applicable law, **MANUFACTURER MAKES NO OTHER EXPRESS OR IMPLIED WARRANTY OF MERCHANTABILITY, FITNESS FOR A PARTICULAR PURPOSE OR ANY OTHER EXPRESS OR IMPLIED WARRANTY.**

#### Inherent Risks of Use

The directions for use are believed to be adequate and must be carefully followed. It is impossible to eliminate all risks associated with use of this product. Lack of performance or other unintended consequences may result because of such factors as use of the product contrary to label instructions, abnormal conditions, the presence of other materials, climatic conditions or the manner of application, all of which are beyond the control of the Manufacturer. To the extent not prohibited by applicable law, the buyer/user assumes all such risks.

#### Limitation of Remedies

To the extent not prohibited by applicable law the exclusive remedy for losses or damages resulting from this product (including claims based on contract, negligence, strict liability or other legal theories) shall be limited to, at Manufacturer's election, one of the following:

3. Refund of purchase price paid by buyer or user for product bought, or
4. Replacement of amount of product used.

To the extent not prohibited by applicable law: a) Manufacturer shall not be liable for losses or damages resulting from handling or use of this product unless Manufacturer is promptly notified of such loss or damage in writing; and b) **TO THE EXTENT NOT PROHIBITED BY APPLICABLE LAW, IN NO CASE SHALL MANUFACTURER BE LIABLE FOR CONSEQUENTIAL OR INCIDENTAL DAMAGES OR LOSSES, INCLUDING WITHOUT LIMIT, HEALTH RELATED DAMAGES OR INJURIES.**

The terms of this **Warranty Disclaimer** and **Limitation of Remedies** cannot be varied by any written or verbal statements or agreements. No employee or sales agent of Manufacturer or the seller is authorized to vary or exceed the terms of this **Warranty Disclaimer** or **Limitation of Remedies** in any manner.

It is not intended that this product be used to practice any applicable patent whether mentioned or not, without procurement of a license, if necessary, from the owner, following investigation by the user.

*{Brand Name}* and Nisus Corporation are [Registered] Trademark[s] of Nisus Corporation.

© \_\_\_\_\_

↑ This Side Up ↑  
Do not store above 100°F.  
Do not ship by airfreight.

Net Contents: 12, 1.25 oz. (0.035 kg) [1.75 oz. (0.0496)] bait stations  
Total Net Contents: 15 oz. (0.425 kg) [21 oz. (0.595 kg)]

**Nisus Corporation**  
100 Nisus Drive; Rockford, TN USA 37853  
800-264-0780  
Made in the U.S.A.

(Optional Marketing Claims)

A Weather/Moisture Resistant Bait to Kill and Control Ants, *{insert pests listed on the label}* (Except Fire Ants),

Weather-Resistant Bait for the Control of: *{insert pests listed on the label}* (Except Fire Ants

[Also] Kill[s] [and Control[s]] *{insert pests listed on the label}* Sweet and Grease Eating Ants,-(Except Fire Ants)

For the Control of: *{insert pests listed on the label}* (Except Fire Ants)

Rainfast [waterproof] up to 4 inches

Long-Lasting, Weather-Resistant Bait

For Both Interior and Exterior Use

For Crack and Crevice Applications!

Can be used indoors and outdoors  
For indoor and outdoor use

For Use In and Around the Following Structures *{select from use sites listed in Directions for Use}*

For outdoor use on *{select from use sites listed in Directions for Use}*

No known insect resistance

No photo-decomposition

No Thermal Degradation

Odorless – No chemical odors

[Proprietary] [Patented] Formula

Ants take bait back to colony to kill the queen

Kills the entire ant colony (queens, workers, etc.)

Fast Acting

Convenient, Easy-to-Use Shaker Bag

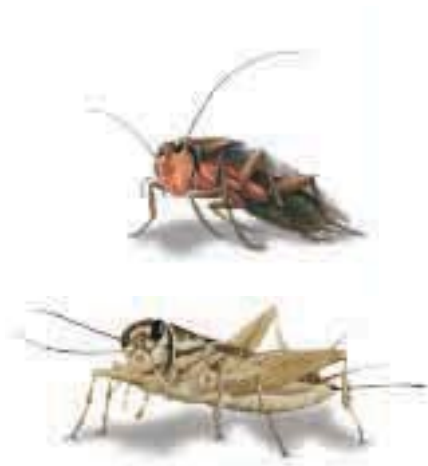
All-in-One Bait Station(s) [(Sold Separately)]

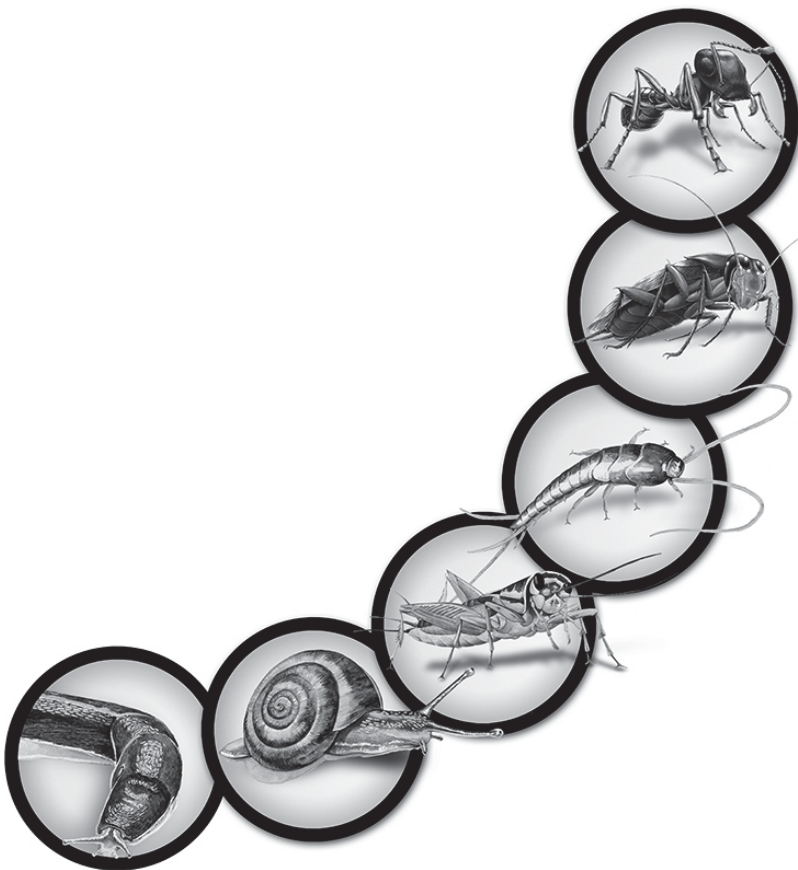
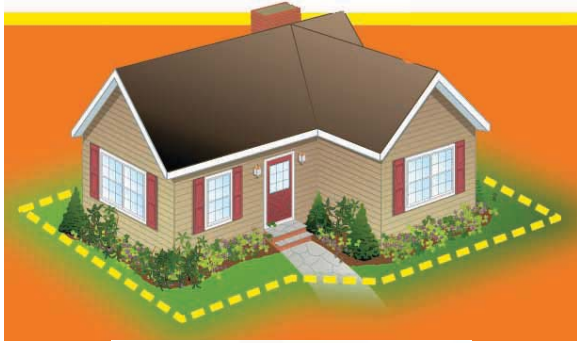
For Use Only in *(brand name)* Bait Stations [(Sold Separately)]

Contains Orthoboric Acid

For Sale [Use] Only in California

*(Optional Graphics)*





[ ] Denotes alternate/optional language  
{ } Denotes language that does not appear on market label