

64321-1

12/27/2010

1 of 11



UNITED STATES ENVIRONMENTAL PROTECTION AGENCY
WASHINGTON, D.C. 20460

OFFICE OF CHEMICAL SAFETY
AND POLLUTION PREVENTION

Ms. Rebecca Horton
Agent for Jesmond Holding AG
P.O. Box 1019
Salem, VA 24153

DEC 27 2010

Dear Ms. Horton:

Subject: Amendment-truncated Environmental Hazards text
and remove cats
BIO KILL brand Insecticide
EPA Registration Number 64321-1
Your submission dated November 22, 2010

The application referred to above, submitted in connection with registration under the Federal Insecticide, Fungicide, and Rodenticide Act, as amended, is acceptable.

A stamped label is enclosed for your records.

If you have any questions regarding this action, please contact Linda A. DeLuise of my team at (703) 305-5428.

Sincerely yours,

A handwritten signature in cursive script, appearing to read "Linda A. DeLuise".

Richard Gebken
Product Manager (10)
Insecticide Branch
Registration Division (7505P)

Enclosure

2011

[FRONT PANEL]

BIO KILL® brand INSECTICIDE

[Additional Brand Name: Multipurpose BioKill brand insecticide; Multi-Purpose BugBusters; BioKill brand insecticide Multi-purpose]

Optional Statements

For commercial use

Makes up to 16 gallons

For residential use

Water-based Permethrin insecticide

Odorless in application.

For use INDOORS on houseplants and in indoor landscaping

A READY-TO-USE and DILUTABLE Permethrin-based emulsion insecticide

Dilutable for use on plants

For use OUTDOORS (residential site only) in gardens, on ornamental trees, shrubs and flowers, on lawns.

For use outdoors, in homes and non-food areas of food/feed processing establishments, hotels, motels, commercial buildings, schools, warehouses, theaters, office buildings and kennels

Will not stain water-safe fabrics and surfaces

For use indoors and outdoors on a wide variety of crawling and flying insects

Use on DOGS to control fleas and ticks

Can be used as a DIP for fleas on DOGS

Use on Poultry to control lice and mites

Provides effective broad-spectrum control of building and garden insect pests

Effective for up to four weeks

Multipurpose, ready-to-use, water based bug killer

Non-flammable, do-it-yourself product

Easy to use - just spray affected areas

Use indoors and outdoors - broad spectrum insecticide includes: cockroaches, mosquitoes, ants, spiders, flies, moths, fleas, lice, bedbugs, crickets, grasshoppers and many, many other listed species

No odor - Non-staining - No sticky residue

Odorless and Multi-purpose Insecticide

Long lasting - residual effect up to 4 weeks

Sold in over 30 countries

Ready-to-use, water-based bug killer

Kills *crawling* insects, including cockroaches, ants, fire ants, fleas, spiders, ticks, lice, silverfish, earwigs, beetles, bedbugs, crickets and more!

Kills *flying* insects, including flies, moths, mosquitoes, gnats, hornets, wasps, black flies and more!
Rx for bugs.

For Bedding & Furniture

NOT FOR USE ON HUMANS

The Only Lice Control Spray Available in a Non-Aerosol Bottle

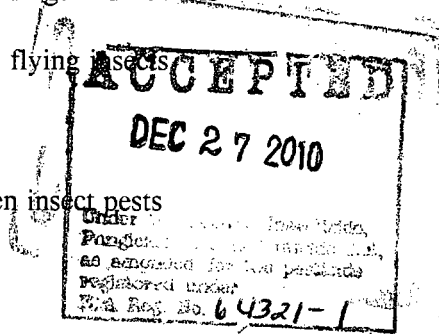
Observe all precautionary statements and follow directions for use carefully.

Household insects: cockroaches, fleas, bed bugs, many, many more

Household plants and indoor landscaping

Pet spray for dogs to eliminate fleas, ticks and lice

Lawns & gardens: many listed insects



3 of 11

ACTIVE INGREDIENT:

Permethrin (CAS #52645-53-1) 0.25%

OTHER INGREDIENTS: 99.75%

100.00%

[NOTE TO EPA: Front panel of label may include graphics representing product use; e.g., insects controlled]

Keep Out of Reach of Children

CAUTION

See back/side/other panel(s) (& accompanying booklet) for additional precautionary statements

NET CONTENTS _____

[BACK/SIDE/OTHER PANEL(S) &/OR BOOKLET, WHEN NECESSARY]

READ ENTIRE LABEL BEFORE EACH USE.

SHAKE BOTTLE WELL BEFORE USING

COMMERCIAL APPLICATIONS:

For use in non-food areas indoors and outside premises of Hotels, Motels, Commercial buildings, Schools, Warehouses, Theaters, Office Buildings, Kennels, Apartments and Condominium buildings, and non-food contact areas of food-feed processing establishments.

Inside and outside landscaping

Controls bugs inside garbage bins, garbage dumpsters and in garbage chutes

Controls bugs in hallways, common areas and inside apartments, office units and public areas

HOUSEHOLD APPLICATIONS:

House plants and indoor landscape

Inside - along baseboards, in carpets, mattresses, around cupboards, etc.

Outside - in gardens, on ornamental flowers, lawns, vegetables and fruit trees.

DOMESTIC ANIMALS:

Dogs to control fleas & ticks

Poultry to control lice, fleas & ticks

Livestock - protects beef and dairy cattle, goats, sheep and horses from horn flies, face flies, mosquitoes and gnats

[NOTE TO EPA: When marketed for use on dogs, the following precautionary statement will be added to label:

PRECAUTIONARY STATEMENTS

Hazards to Domestic Animals

CAUTION: Sensitivities may occur after using ANY pesticide product for pets. If signs of sensitivity occur, bathe your pet with mild soap and rinse with large amounts of water. If signs continue, consult a veterinarian immediately.]

[When labeled for outdoor use]

ENVIRONMENTAL HAZARDS

This product is extremely toxic to fish and aquatic organisms. To protect the environment, do not allow pesticide to enter or run off into storm drains, drainage ditches, gutters or surface waters. Applying this product in calm weather when rain is not predicted for the next 24 hours will help to ensure that wind or rain does not blow or wash pesticide off the treatment area. Rinsing application equipment over the treated area will help avoid run off to water bodies or drainage systems. This pesticide is toxic to honey bees and other beneficial pollinators exposed to an application. Do not apply when bees are actively visiting blooming plants (vegetables, flowers, fruit/ornamental trees). Do not allow this product to come in direct contact with beehives at anytime.

[When labeled exclusively for indoor use]

ENVIRONMENTAL HAZARDS

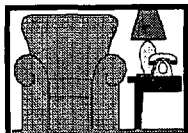
This product is extremely toxic to fish and aquatic organisms. To protect the environment, do not allow pesticide to enter or run off into storm drains, drainage ditches, gutters or surface waters.

DIRECTIONS FOR USE

It is a violation of Federal law to use this product in a manner inconsistent with its labeling.

FOR USE IN NON-FOOD AREAS INDOORS AND OUTSIDE PREMISES OF HOTELS, MOTELS, HOMES, SCHOOLS, PRESCHOOLS, NURSERIES, DAY CAMPS, GREENHOUSES, LATHHOUSES, SEED HOUSES, FOOD HANDLING ESTABLISHMENTS, PACKAGING AND PROCESSING PLANTS, BREWERIES; COMMERCIAL, INDUSTRIAL, OFFICE, INSTITUTIONAL AND STORAGE BUILDINGS; DAIRIES, MILK STORAGE ROOMS, EGG PROCESSING PLANTS, STORES, GROCERY STORES/SUPERMARKETS, RESTAURANTS, BOTTLING PLANTS, CANNERIES, FLOWER AND FEED MILLS, BAKERIES, WAREHOUSES, PORTABLE TOILETS, AND IN HOSPITALS. IN HOSPITALS, PATIENTS SHOULD BE REMOVED PRIOR TO TREATMENT. ALSO FOR USE IN CAMPERS, MOBILE HOMES, BUSES, AUTOMOBILES, TRUCKS, BOXCARS, MARINAS, BOATS AND SHIPS. ALSO FOR USE IN DOG KENNELS AND HORSE STABLES. IN HORSE STABLES, NOT FOR APPLICATION IF HORSES WILL BE USED FOR FOOD.

INDOOR APPLICATIONS:



Do not use in food/feed areas of food/feed handling establishments, restaurants or other areas where food/feed is commercially prepared or processed. Do not use in serving areas while food is exposed or facility is in operation. Serving areas are areas where prepared foods are served such as dining rooms, but excluding areas where foods may be prepared or held. The product may be used in non-food/feed areas of food/feed establishments such as garbage rooms, lavatories, offices, locker rooms, machine rooms, boiler rooms, garages, mop closets and storage areas (after canning or bottling). In the home, cover all food handling surfaces, cover or remove all food and cooking utensils or wash thoroughly after treatment. Not For Use In Federally Inspected Meat and Poultry Plants. Do not apply to classrooms while in use. Application is prohibited directly into sewers or drains, or to any area like a gutter where drainage to sewers, storm drains, water bodies, or aquatic habitat can occur. Do not allow the product to enter any drain during or after application.

Surface Spraying: Provides control of crawling and flying household insect pests for up to 4 weeks. To control *ants, boxelder bugs, brown dog ticks, cadelles, centipedes, cheese mites, cluster flies, clover mites, cockroaches, crickets, earwigs, fire ants, flying moths, fruit flies, gnats,*

grasshoppers, house flies, Lone star ticks, mealworms, millipedes, mosquitoes, palmetto bugs, rice weevils, scorpions, silverfish (firebrats), sowbugs (pillbugs), spider beetles, spiders and waterbugs: Direct the spray into hiding places, cracks and crevices, behind shelves and drawers, moist areas, openings around pipes and sinks, under refrigerators. Spray directly into and around floor drains.

For silverfish, spray bookcases. For Ants, spray trails, nests and points of entry.

To control *carpet beetles*: Hold container 14-18 inches from carpet. Apply spray evenly, covering the entire surface until slightly moist. Avoid wetting or soaking. Spray underside of carpet when possible. Also spray floor and along baseboards, cracks and crevices wherever these insects are seen or suspected.

To control *bedbugs*: Spray mattresses lightly, particularly around tufts and seams. Take beds apart and spray in all joints. Allow all sprayed articles to dry thoroughly before use.

To control *fleas* (adult and larvae) and *ticks* (adult and nymphs): Remove and thoroughly clean or destroy pet bedding. Spray pet sleeping quarters, beds, entire floor and floor covering (e.g., rugs and carpeting) with special attention to cracks and crevices around baseboards, and window and door frames. Infested upholstered furniture may also be treated with this product. Make a test application to upholstery or drapery fabrics in an inconspicuous place before use. Allow to dry thoroughly before allowing pets to contact treated areas.

To control *clothes moths*: Remove and brush thoroughly any infested articles from storage and air for several hours in sunlight, if possible. Apply spray liberally to empty chests, closets, bureaus and other storage areas directing the spray into cracks, joints and crevices. After airing, infested articles may be treated lightly by keeping nozzle at least 3 feet from fabric to avoid possible staining. Allow all sprayed articles to dry thoroughly before use.

To kill *lice* and *louse eggs*: Spray in an inconspicuous area to test for possible staining or discoloration. Inspect again after drying, then proceed to spray entire area to be treated. Spray from a distance of 8 to 10 inches. Treat only those garments and parts of bedding, including mattresses and furniture that cannot be either laundered or dry cleaned. Allow all treated articles to dry thoroughly before use.

Grain Insects: To control *confused flour beetles, saw-toothed grain beetles, spider beetles, shiny spider beetles, grain mites, red flour beetles, angoumois grain moths, grain weevils, Indian meal moths, Mediterranean flour moths, lesser grain borers, cigarette beetles, drug store beetles, chocolate moths and carpet beetles* remove infested grain, cereal or flour and destroy. Avoid contamination of other food and foodstuffs in the area by removing before spraying. Spray directly on exposed stages and into cracks and crevices where grain insects may be hiding. In homes, dispose of all infested products. The shelves and drawers should be cleaned and thoroughly sprayed. Any utensils that are contacted with spray should be washed before reusing. Repeat as necessary.



Industrial Warehouse Fogging: For area control of crawling and flying insect pests for up to 4 weeks.

To control *spiders, millipedes, centipedes, sowbugs, pillbugs, ants, firebrats, cigarette beetles, cheese mites, granary weevils, rice weevils, confused flour beetles, rust red flour beetles, mealworms, Indian meal moths, coried grain beetles, tobacco beetles, grain mites and cadelles*: Close all doors and windows and fog at the rate of 1 ounce per thousand cubic feet, moving toward the exit. Fill room with fog. Direct to all parts of the room especially windows and other light sources which attract these insects. Leave area and keep closed for a period of 2 hours before reentry. Open and ventilate before reoccupying. Fogged area must be cleared of all personnel and pets while fogging is taking place. This product is to be used solely for warehouse space used to store non-food/feed materials.

OUTDOOR APPLICATIONS:

Do not water the treated area to the point of run-off. Do not make applications during rain. All outdoor applications must be limited to spot or crack-and-crevice treatments only, except for the following permitted uses:

- (1) Treatment to soil or vegetation around structures;
- (2) Applications to lawns, turf and other vegetation;
- (3) Applications to building foundations, up to a maximum height of 3 feet.

Other than applications to building foundations, all outdoor applications to impervious surfaces such as sidewalks, driveways, patios, porches, and structural surfaces (such as windows, doors, and eaves) are limited to spot and crack-and-crevice applications only.



Garden Insects: For use on roses, dahlias, asters and other ornamentals to kill *Japanese beetles* as well as *whiteflies*, *aphids*, *lace bugs*, *ants*, *exposed thrips*, *spiders*, *red mites* and *leafminers*. May be used on plants in small gardens as a multi-purpose spray and for spot treatments of incipient insect infestations to prevent spreading into larger garden areas.

When spraying plants, do not hold nozzle closer than 18 inches. Use a sweeping motion. Be cautious about wetting tender foliage, young plants and new growth. Do not spray plants when temperature exceeds 90°F. Contact insects directly whenever possible. Repeat treatment as infestations occur.

Nuisance Insect Pests: 1 gallon BIO KILL brand insecticide treats 800 linear feet with a 6-inch band. [16 fl. oz. BIO KILL brand insecticide treats 100 linear feet with a 6-inch band.]

Outside Surfaces of Buildings: To control *ants*, *clover mites*, *crickets*, *earwigs*, *millipedes*, *sowbugs (pillbugs)*. To help prevent infestations, spray the building foundation to a height of 2-3 feet where insects are active and may find entrance. Apply as a residual spray to porches, screens, window frames, eaves, patios, garages, refuse dumps and other outside building areas where these pests congregate or are seen. Repeat treatment as needed to maintain effectiveness. To aid in reducing annoyance from *cluster flies*, *flying moths*, *gnats*, *house flies* and *mosquitoes*, spray outside surfaces of screens, doors, window frames or wherever these insects may enter. Treat surfaces around light fixtures on porches, in garages and other places where these insects gather. Repeat as necessary.

Other Outdoor Areas: To kill *crickets*, *earwigs* and *fleas* thoroughly spray infested areas of weeds or brushy non-crop areas. For *ants* thoroughly wet hills and runways. Repeat application as reinfestations occur.



Wasps, Hornets, Yellow Jackets: Application should be made in the late evening when insects are at rest. Spray liberally into hiding and breeding places, including nest openings in ground, bushes, under attic rafters and other cracks and crevices which may harbor pests. Saturate nest openings and contact as many insects as possible. Repeat as necessary.

Fire Ants: Apply 1 gallon of BIO KILL as a gentle rain to each fire ant mound using a sprinkler can. Thoroughly wet the mound and surrounding area to a 4 foot diameter (1.22 m). For best results apply in cool weather, 65°-80° F (18.5-27°C), or in early morning or late evening hours. Treat new mounds as they appear. Do not disturb the mound prior to treatment. If possible, treat all mounds in the vicinity, and treat all colonies which may not as yet have constructed a mound.

Ticks (including ticks which may carry lyme disease): Apply as a residual treatment to control *Deer*

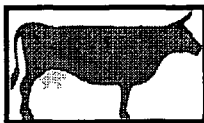
tick (*Ixodes dammiei*), Lone Star tick (*Amblyomma americanum*), Brown dog tick (*Rhipicephalus sanguineus*), American dog tick (*Dermacentor variabilis*) and Western black-legged tick (*Ixodes pacificus*). Apply until surface is wet (approximately 1 gal/750-1000 ft.) [(approximately 16 fl. oz./94-125 ft.)] Treat around windows and doors, porches, screens, eaves, patios, garages, under stairways and in crawl spaces where these pests may enter. Treat a band of vegetation and leaf litter 6-10 feet wide around the outside of buildings to help control ticks occurring there. To help control ticks in outdoor activity areas, treat a band of vegetation and leaf litter 6-10 feet wide and adjacent to activity areas, especially where dense vegetation occurs.



ON DOGS:

USE ONLY ON DOGS. Consult a veterinarian before using this product on debilitated, aged, pregnant, nursing, or medicated animals.

On Dogs. To control *fleas, ticks and lice*: Start spraying at the tail, moving the sprayer rapidly and making sure that the animal's body is covered, including the legs and underbody. While spraying fluff the hair so that the spray will penetrate to the skin. Make sure spray wets thoroughly. Do not spray into eyes or face. Avoid contact with genitalia. Repeat every three weeks. **As a dip for dogs:** Using one part product and three parts water, make up enough material to thoroughly soak animal. Wet animal with water before treatment. Sponge, dip or pour diluted product on the animal until fur and skin are thoroughly wet, making sure that the animal's entire body is treated, including the legs and underbody. Do not treat animal's face. Do not use on puppies less than 12 weeks old.



ON LIVESTOCK:

To protect beef and dairy cattle, goats, sheep and horses from *horn flies, face flies, mosquitoes and gnats*: Apply a light mist sufficient to wet the surface of the hair. For face flies, spray face and head, but do not spray into eyes.

To control *stable flies, horse flies and deer flies*: Apply at a rate of 2 ounces per adult animal, sufficient to wet the hair thoroughly. Repeat treatment daily or at intervals necessary to give control protection.

To control *blood-sucking lice*: Apply to infested area of the animal using a stiff brush to get the spray to the base of the hair. Repeat every 3 weeks if required.

To aid in control of above listed insects and reduce annoyance to livestock, thoroughly spray barn walls, stalls and surfaces where these pests may alight or congregate.

To control *poultry lice*: Spray roosts, walls and nests or cages thoroughly. Follow by spraying over the bird with a fine mist.

To control *bedbugs and mites in poultry houses*: Spray crevices of roost poles, cracks in walls and cracks in nests where the bedbugs and mites hide.

To control *flies, mosquitoes and gnats* in barns, milk rooms, dairy plants, slaughter and poultry houses: Apply as a fog or fine mist, directing spray toward the ceiling and upper corners of the room until the area is filled with mist, using 1 oz. of Bio Kill® brand insecticide in 2 quarts of water to cover 1,000 cubic feet of space. For best results, close windows and doors before spraying and keep closed for 10 to 15 minutes. Vacate the area and ventilate before re-occupying. Repeat application as necessary.

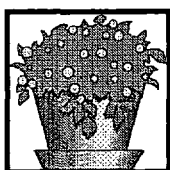
DIRECTIONS FOR USE AS A *DILUTABLE PRODUCT*

FOR USE ON INDOOR AND OUTDOOR PLANTS:

Not for use on plants being grown for sale or other commercial use, or for commercial seed production, or for research purposes. For use on plants intended for aesthetic purposes or climatic modification and being grown in interior plantscapes, ornamental gardens or lawns and grounds.

Note: Do not use more BIO KILL than recommended, as this may cause some plant injury. Use this dilution unless otherwise specified. Use with care on ferns, palms and fuchsia. As with all plants listed above, especially carnations, chrysanthemums and roses, there exists a wide variety of species and cultivars and, therefore, a wide variety of susceptibility to injury. To ascertain possible phytotoxicity, spray a few plants as described above, wait 24 hours, and check for possible injury.

CONTACT & RESIDUAL SPRAY - Apply as a thorough coverage spray, wetting leaves and branches to run-off. Use sufficient spray to penetrate dense foliage. Adjust spray volume used to plant size.



Indoor Application: Mix 8 oz (1 cup) of BIO KILL 0.25% with 1 gallon of water [2 oz. (4 Tbs) of BIO KILL with 1 quart of water]. If application is to be made indoors, remove infested plants from living areas prior to application. Spray plants in an area not likely to be occupied by children or pets (particularly fish). When leaves dry, plants can be returned to original location.

To protect plants in indoor landscaping, spray directly on insects to kill *leafrollers*, *armyworms*, *cutworms* and *cabbageworms* on Chrysanthemums; *fungus gnats* on Velvet plants. Spray as directed above to control *aphids*, *armyworms*, *corn earworms*, *fall cankerworms*, *inchworms*, *Japanese beetles*, *leafminers*, *leafrollers*, *mealybugs*, *scale*, *spider mites*, *spring cankerworms*, *exposed thrips* and *whiteflies* on the following: Ageratum, Ardisia, Aster, Azalea, Baby's breath, Begonia, Birdsnest fern, Bleeding heart, Carnation, Chrysanthemum, Coleus, Crown of thorns, Cockscomb, Cyclamen, Dracaena, Dumbcane, English ivy, Fuchsia, Gladiolus, Grape ivy, Hypoestes Ivy, Juniper, Lily, Marigold, Orchid, Palm, Pansy, Peperomia, Petunia, Philodendron, Piggy-back plant, Poinsettia, Portulaca, Pothos, Prayer plant, Purple passion, Rabbits foot fern, Rose, Schefflera, Snapdragon, Snake plant, Statice, Velvet plant, Verbena, Zinnia.



Outdoor Application: Do not water the treated area to the point of run-off. Do not make applications during rain. All outdoor applications must be limited to spot or crack-and-crevice treatments only, except for the following permitted uses:

- (1) Treatment to soil or vegetation around structures;
- (2) Applications to lawns, turf and other vegetation;
- (3) Applications to building foundations, up to a maximum height of 3 feet.

Other than applications to building foundations, all outdoor applications to impervious surfaces such as sidewalks, driveways, patios, porches, and structural surfaces (such as windows, doors, and eaves) are limited to spot and crack-and-crevice applications only.

Mix 8 oz (1 cup) of BIO KILL 0.25% with 1 gallon of water [2 oz. (4 Tbs) of BIO KILL with 1 quart of water]. Spray in the late afternoon or evening when temperature ranges from 50°F to 78°F, and when there is little or no wind. Spray at the first sign of insect pests. On those plants that will flower during the season, the spray schedule should be completed before blossom formation. Repeat as necessary; use intervals of 4 to 8 days. BIO KILL application can be made up to the day of collection. Repeat applications may be necessary to control citrus blackflies on non-bearing citrus; adult Japanese beetles on roses.

Roses & Flowers: Spray as directed above to control *aphids, cicadas, corn earworms, fall cankerworms, fall webworms, inchworms, leafminers, leafrollers, mealybugs, bagworms, spider mites, exposed thrips and whiteflies* on the following: Ageratum, Aster, Azalea, Begonia, Coleus, Common ninebark, Common snowberry, Exacum, Gladiolus, Gold bells, Hypoestes, Ivy, Lilac, Marigold, Mock orange, Nannyberry, Orchid, Pansy, Pea shrub, Petunia, Poinsettia, Rhododendron, Rose, Snapdragon, Wax plants, Zinnia.

Trees & Shrubs: Use sufficient spray to obtain full coverage of all foliage. Avoid heavy wetting. Use to control *aphids, bagworms, cicadas, exposed thrips, fall cankerworms, inchworms, leafminers, leaf rollers, mealybugs, spider mites* and *whiteflies* on the following: Arizona cypress, Birch, Cherry, non-bearing Citrus, Conifers, Elm, Euonymous, English ivy, Fir, Honeysuckle, Oak, Palm, Philodendron, Pine, Taxus, Tulip Poplar and Weeping fig. Use to control *pine moths, pine needleminers, pine beetles and needle scales* on Pine; *budworms* on Conifers; *oakworms* on Oak; *fall webworms* on Cherry, Elm and Honeysuckle; *citrus black flies* on non-bearing citrus; *tussock moths* on Douglas and grand firs; *leafminers* on Birch; *elm leaf beetle and elm spanworms* on Elms. To kill *tent caterpillars*: Application should be made when caterpillars are young and tents are first noticed. For best results, apply in late afternoon or evening, when caterpillars have returned to their tents. Apply BIO KILL FULL STRENGTH. Wet tents with spray on all sides. A few caterpillars may be seen escaping from the tent; however, they should die within several hours.

LAWNS: For *armyworms* mix 4½ oz. in 1 gal. of water and use 10 gals. of diluted BIO KILL solution to cover 1,000 sq. ft. For *brown dog ticks, chinch bugs, cutworms, fleas, Japanese beetle grubs, mole crickets* and *sod webworms* mix 1 oz. in 1 gal. of water. Use 10 gals. of diluted BIO KILL solution to cover 1,000 sq. ft. To control *ants (including fire ants), crickets* and *grasshoppers* mix 6.4 oz. in 1 gal. of water. Use 3 gals. of diluted BIO KILL solution to cover 1,000 sq. ft.

Thoroughly wet down grass a few hours before applying. Lawns should be no taller than 3 inches at time of application. Slightly more water may be used as long as the amount of product per area is as listed above. For heavy infestations, repeat application after 2 weeks. Also for control of *cutworms on dichondra and Irish moss*. Use as directed above for lawns.

FRUIT & NUT TREES: For use on fruit and nut trees grown around the home. Mix 1 pt. (16 fl. oz.) BIO KILL in 1 gallon of water. Apply when insects appear. Spray until foliage is dripping wet.

Almonds: *Naval orangeworm, Peach twig borer*. Do not make more than 2 applications during hull split and 5 applications per season. Can be applied up to 7 days prior to harvest.

Apples: *Plum curculio, Redbanded leafroller, Rosy apple aphid, Spotted tentiform leafminer, Tarnished plant bug, White apple leafhopper, Obliquebanded leafroller, Green fruitworm*.

Repeat as required to maintain control. Do not make more than 3 applications per season. Do not apply after petal fall.

Peaches: *Lesser peachtree borer, Peach twig borer, Plum curculio, Tarnished plant bug, Green fruitworm, Oriental fruit moth*. Do not apply within 7 days of harvest. Do not make more than 8 applications per season.

Pears (dormant through delayed dormant): *Pear psylla*. Apply during the dormant through delayed dormant growth period only. Add, if desired, 8 oz. of spray oil to each gallon of finished spray solution. Do not make more than 2 applications per season.

Pears (summer): *Pear psylla, Green fruitworm, Codling moth*. Apply when needed. Do not apply more than 3 applications per season. Can be applied up to 14 days prior to harvest.

VEGETABLES: For Residential or Home Vegetable Gardens Only

Prepare BIO KILL spray mix as directed. Use 0.25 gallons (1 qt.) of finished spray per 110 sq. ft. or 1 liter per 10.7 square meters of surface area.

Asparagus (preharvest): *Cutworm, Asparagus beetle* - Mix 7 oz. in 1 gal. of water. Apply for uniform coverage as needed. Do not apply more than 4 applications per crop. Can be applied up to 3 days prior to harvest. (postharvest): *Larval stages of Asparagus beetle, tarnished plant bug, lygus bugs, and adult Japanese beetle.* Mix 7 oz. in 1 gal. of water. Treat ferns or bush growth after spear harvest when insects are present.

Celery: *Vegetable leafminer, Cabbage looper, Black and Granulate cutworm, Armyworms (fall, beet & southern).* Mix 13 oz. in 1 gal. of water. Apply every 3-5 days or as needed. Can be applied up to 3 days prior to harvest. Do not make more than 10 applications per season.

Cole Crops (Broccoli, Brussels sprouts, Cabbage, Cauliflower): *Beet armyworm, Diamond back moth, Imported cabbageworm, Cabbage-aphid, Cabbage looper.* Mix 7 oz. in 1 gal. of water. Apply every 5 days or as needed. Can be applied up to one day prior to harvest. Do not make more than 8 applications on Cauliflower, Brussels sprouts and broccoli, and 10 applications on cabbage.

Eggplant: *Colorado potato beetle, Vegetable leafminer.* Mix 13 oz. in 1 gal. of water. Apply for uniform coverage as needed. Do not exceed 16 applications. Can be applied up to 3 days prior to harvest.

Horseradish: *Imported crucifer weevil. Spring preplant dip* - Mix 1 pt. (16 oz.) in 1 qt. of water. Soak sets for 30 minutes and air dry before planting. **Foliar application** - Mix 13 oz. in 1 gal. of water. Apply as needed. Do not exceed 3 foliar applications. Can be applied up to 22 days prior to harvest.

Lettuce (Head lettuce only - do not use on leaf lettuce): *Cabbage looper, Alfalfa looper, Beet armyworm, Corn earworm and Tobacco budworm.* Mix 13 oz. in 1 gal. of water. Apply every 5-10 days as needed. Do not make more than 10 applications per season. Can be applied up to 1 day prior to harvest.

Peppers: *Vegetable leafminer, Cabbage looper, Flea beetle, Corn earworm, Pepper weevil, European corn borer.* Mix 13 oz. in 1 gal. of water. Apply as needed but not more than 8 sprays per season. Can be applied up to 3 days prior to harvest.

Potatoes: *Beet armyworm, Colorado potato beetle, Potato leafhopper, Potato flea beetle, Aster leafhopper, Potato aphid. Potato tuberworm, Cabbage looper, Cutworms, European corn borer, Potato psyllid, Tarnished plant bug.* Mix 13 oz. in 1 gal. of water. Apply as needed. Do not apply more than 12 applications. Can be applied up to 7 days prior to harvest.

Spinach: *Beet armyworm, Corn earworm, Cabbage looper, Cutworms, European corn borer, Green cloverworm, Leafhoppers.* Mix 7 oz. in 1 gal. of water. Apply for uniform coverage when needed, but not more than 7 applications per season. Can be applied up to 7 days prior to harvest.

Sweet corn: *Corn earworm, European Corn borer, Fall armyworm, Southern armyworm.* Mix 13 oz. in 1 gal. of water. Apply every 5 days and when needed, but not more than 6 applications per season. Can be applied up to 1 day prior to harvest.

Tomatoes (Florida only. Only for application to tomatoes grown in Florida for varieties yielding tomatoes less than one inch in diameter.): *Beet and Southern armyworm, Tomato pinworm, Tomato fruitworm, Horn worms, Granulate cutworms, Colorado potato beetle, Cabbage looper.* Mix 13 oz. in 1 gal. of water. Apply for uniform coverage when needed but not more than 6 applications per season. Can be applied up to date of harvest.

110611

Storage & Disposal

Do not contaminate water, food or feed by storing or disposal.

Pesticide Storage and Spill Procedures: Keep from freezing. Store upright at room temperature. Avoid exposure to extreme temperatures. In case of spill or leakage, soak up with an absorbent material such as sand, sawdust, earth, fuller's earth, etc. Dispose of with chemical waste.

[CONTAINERS ONE GALLON AND SMALLER]:

Pesticide Disposal: *If partly filled* - Call your local solid waste agency for disposal instructions. Never place unused product down any indoor or outdoor drain

Container Disposal: *If empty* - Nonrefillable container. Do not reuse or refill this container. Place in trash or offer for recycling if available.

[CONTAINERS LARGER THAN ONE GALLON]

Pesticide Disposal: Pesticide or rinse water that cannot be used according to label instructions must be disposed of at or by an approved waste disposal facility.

Container Disposal: Nonrefillable container. Do not reuse or refill this container.

Metal Containers: Triple rinse or equivalent, then offer for recycling or reconditioning, or puncture and dispose of in a sanitary landfill, or by other procedures approved by State and local authorities.

Plastic Containers: Triple rinse or equivalent, then offer for recycling or reconditioning, or puncture and dispose of in a sanitary landfill or by incineration, or if allowed by State and local authorities, by burning. If burned, stay out of smoke.

NOTICE: To the extent consistent with applicable law, buyer assumes all risks of use, storage of handling of this product not in strict accordance with directions given herewith.

Jesmond Holding Ag, Zug, Switzerland

[Lot no. to be added at production.]