



64248-15

1/28/2000

1/5

	U.S. ENVIRONMENTAL PROTECTION AGENCY Office of Pesticide Programs Registration Division (7505C) Ariel Rios Building 1200 Pennsylvania Ave., NW Washington, D.C. 20460	EPA Reg. Number: 64248-15	Date of Issuance: JAN 28 2000
	NOTICE OF PESTICIDE: <u> x </u> Registration <u> </u> Reregistration (under FIFRA, as amended)	Term of Issuance: Conditional	
		Name of Pesticide Product: Maxforce Ant Bait F3	
Name and Address of Registrant (include ZIP Code): J. Evelyn Lawson Maxforce Insect Control Systems c/o PS & RC P.O. Box 493 Pleasanton, CA 94566-0803			
Note: Changes in labeling differing in substance from that accepted in connection with this registration must be submitted to and accepted by the Registration Division prior to use of the label in commerce. In any correspondence on this product always refer to the above EPA registration number.			
On the basis of information furnished by the registrant, the above named pesticide is hereby registered/reregistered under the Federal Insecticide, Fungicide and Rodenticide Act. Registration is in no way to be construed as an endorsement or recommendation of this product by the Agency. In order to protect health and the environment, the Administrator, on his motion, may at any time suspend or cancel the registration of a pesticide in accordance with the Act. The acceptance of any name in connection with the registration of a product under this Act is not to be construed as giving the registrant a right to exclusive use of the name or to its use if it has been covered by others.			
This product is conditionally registered in accordance with FIFRA sec. 3(c)(7)(B) provided that you:			
1. Submit and/or cite all data required for registration of your product under FIFRA sec. 3(c)(5) when the Agency requires all registrants of similar products to submit such data; and submit acceptable responses required for reregistration of your product under FIFRA section 4.			
2. Make the following label changes:			
a. Revise the EPA Registration Number to read, "64248-15".			
b. Delete or justify the claim Worker ants that have been contaminated or exposed feed the bait to the larvae in the colony. The larvae digest the solid bait and produce a liquid output that contains fipronil - that is fed to the rest of the colony and queen(s). This Maxforce Domino Effect eliminates the entire colony."			
c. All references to "outdoor" or "outdoor ants" must be qualified by the statement that "outdoors" is "adjacent to the home or structure."			
Signature of Approving Official:  Marion J. Johnson, Jr. Product Manager 3 Insecticide Branch Registration Division (7505C)		Date: JAN 28 2000	

page 2
EPA Reg. No. 64248-15

3. Submit two copies of the revised final printed label for the record.

4. Submit storage stability/corrosion characteristics data.

5. The child resistant packaging (CRP) certification dated July 8, 1999 is acceptable and has been placed in the file jacket for this registration.

If these conditions are not complied with, the registration will be subject to cancellation in accordance with FIFRA sec. 6(e). Your release for shipment of the product constitutes acceptance of these conditions.

A stamped copy of the label is enclosed for your records.

TEAR HERE TO OPEN ►

MAX FORCE[®]

Ant Bait F3

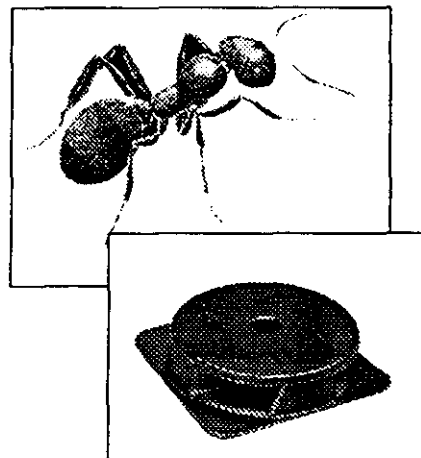
- Kills ants in 1 day
- Kills ants overnight
- Starts killing Ants in 6 hours
- Overnight killing action
- Visible results overnight
- See results overnight
- Overnight results
- Kills ants in -or- within hours
- You should see dead ants overnight
- Fast kill in 1 day
- [New] [Kills ants quickly]
- [New] Quick kill formula
- [New] fast formula
- Destroys the nest/colony
- Kills the ant source
- Kills the ant [colony]
- Kills the ants you see and ones you don't see
- Destroys queen and colony
- Kills ants continuously
- Kills non-stop
- Long lasting power
- Kills quickly and keeps on killing
- Ongoing ant control
- Non-stop ant control
- Provides long lasting ant killing power
- Kills ants without messy residue and without insecticide odors/fumes

• [This product] kills common household ants, including: Pharaoh Ants, Argentine Ants, [Black Carpenter Ants, Little Black Ants, Cornfield Ants, Odorous House Ants, and Pavement Ants.]

- Leaves no residue or odor
- Kills indoor and outdoor ants
- Kills grease and sugar loving ants
- Kills entire colony
- Kills ants without insecticide odors [fumes]
- Ants carry bait back to the colony so that the bait can kill the queen and other ants so that they don't invade your home
- Kills ants outdoors (adjacent to the home) before they come indoors so that they don't invade your home
- Kills the entire ant colony so that they don't invade your home
- Kills common outdoor ants
- Kills the queen and [the] entire colony
- Kills ants outdoors before they come indoors
- Fast control with Fipronil

FOR INDOOR AND OUTDOOR
(adjacent to the home) USE.

**Destroys Queen
and Colony**



ACCEPTED
WITH COMMENTS
in EPA Label Dated:
JAN 28 2000

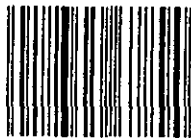
[Note: optional text for this label appears in brackets]

DO NOT ALLOW CHILDREN OR PETS TO PLAY WITH THE BAIT STATIONS.

CAUTION:

(See cautions on end -or- side -or- bottom panel)

CONTAINS 6 -or- 24 CHILD
RESISTANT BAIT STATIONS [AND STAKES]



EPA Reg No. 64248-XX Est. No. 5813-MS-01
U.S. Patents Nos. _____ and other patents pending.

ACTIVE INGREDIENT: Fipronil [5-amino-1-(2,6-dichloro-4-(trifluoromethyl)phenyl)-4-(1 R,S)-(trifluoromethylsulfinyl)-1H-pyrazole-3-carbonitrile] 0.001%
INERT INGREDIENTS: 99.999%

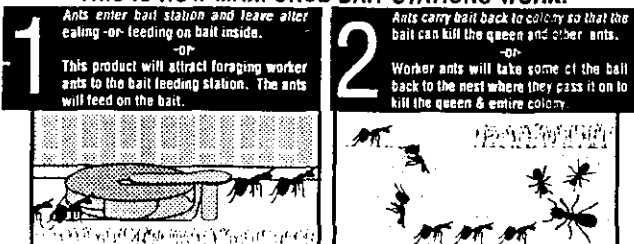
TOTAL NET WT 0.32 to 1.27 oz or (9 to 36 grams)

(• ODORLESS • CHILD-RESISTANT • EASY-TO-USE • KILLS THE QUEEN AND THE ENTIRE COLONY • NO INSECTICIDE ODOR • KILLS COMMON [OUTDOOR] ANTS • ATTRACTS WORKER ANTS TO THE BAIT STATIONS

MAXFORCE

Ant Bait F3

THIS IS HOW MAXFORCE BAIT STATIONS WORK:



To prevent ants from coming indoors, place bait station every 15 to 20 feet around the perimeter of your home -or- building -or- structure.

MAXFORCE® Ant Bait F3 contains a patented bait formulation which kills common household ants including Pharaoh Ants and Argentine Ants. [See side -or- front panel for other species.] When properly used, MAXFORCE Ant Bait F3 will attract foraging worker ants. The ants will feed on the bait which contains the active ingredient Fipronil. Then, the worker ants will take some of this bait back to the nest where they will pass it on to destroy the queen and the entire colony. MAXFORCE Ant Bait F3 will kill both adult and larval ant forms.

Do not use residual sprays with or near the MAXFORCE bait stations, as the worker ants must remain alive to carry the bait back to the queen and immature workers. Residual sprays may cause worker ants to spread out and form secondary colonies. MAXFORCE Ant Bait F3 works because it is non-repellent and thus will not cause secondary colony formation.

MAXFORCE Ant Bait F3 bait stations have no insecticide odor, are child-resistant and easy to use. The patented bait station design allows you to inspect each bait placement and monitor the amount of ant feeding. They may be used for the control of ants wherever they are a problem (e.g. hospitals, nursing homes, day care centers, schools, aircraft, residential establishments, warehousing and commercial establishments, food service, food manufacturing and food processing facilities, laboratories, computer and electronic equipment facilities, pet shops, zoos, buses, boats and trains).

MAXFORCE contains Fipronil, [a [new] active ingredient] which kills ants by ingestion and contact. In the process of ingestion or contact, Fipronil [the active ingredient] acts by blocking the GABA (Gamma Amino Butyric Acid) receptor of the chloride channel. Once chloride ions cannot pass through the channel, depolarization ensues resulting in continued release of excitatory transmitters and hyperexcitation of the neuron. Worker ants that have been contaminated -or- exposed feed the bait to the larvae in the colony. The larvae digest the solid bait and produce a liquid output that contains Fipronil - that is fed to the rest of the colony and queen(s). This Maxforce Domino Effect™ eliminates the entire colony.

DIRECTIONS FOR USE: It is a violation of Federal Law to use this product in a manner inconsistent with its labeling.

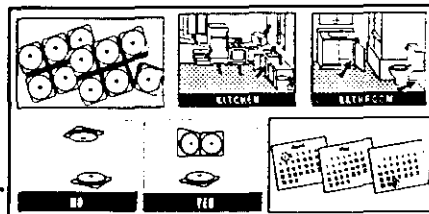
1. Simply place each bait station indoors or outdoors (adjacent to home -or- structure) next to ant trails or close to areas where ants are numerous. Nests are usually located in dark, humid and warm areas close to a water and food source. For maximum effectiveness in ant control the bait station should be placed in or near wall voids, electrical outlets (if wiring permits), potted plants, waste-paper baskets, garbage cans and sinks. Bait stations can be placed in cabinets, next to dishes, near sensitive equipment or anywhere your ant problem occurs.

2. **INDOOR USE:** For normal infestations, you should use 3 MAXFORCE Ant Bait F3 bait stations in an average sized room. For heavier infestations, you will need additional bait stations in each room. If infestation persists beyond two weeks, replace all bait stations where the bait has been completely consumed and re-locate bait stations that show no evidence of ant feeding.

EFFECTIVENESS GUARANTEED:

MAXFORCE® stands behind this insect killing system with a full Satisfaction Guarantee. Should you have any questions regarding MAXFORCE®, please call 1-800-426-6228.

Guaranteed to work or your money back!



- OUTDOOR USE:** Bait stations should be placed adjacent to the home -or- structure near ant activity or anywhere ants may gain access to the home -or- structure. Application sites include electrical conduits, vents, pipe chases, concrete slabs, skylights on roofs; around ant mounds, garbage cans, and trees; along walls, windowsills, sidewalks and driveways; on ground around home -or- structure.
- The stickers provided in the box can be used to attach the bait stations to vertical surfaces if desired. -or-
- The bait stations can be stuck on a vertical surface by peeling off the protective strip to expose adhesive.
- Do not spray the bait stations with other insecticides.** Avoid placing the bait stations on freshly sprayed surfaces.
- Increased ant activity may be seen near the bait stations immediately after placement but you can expect to see less activity within 1-3 days -or- a few days -or- one week. After placement, ant trails may be observed between the bait stations and the nests. For best results, do not interfere with the ants or the stations during their use because ants must carry the bait back to destroy the queen and colony.
- Inspect all bait stations and replace as needed for continuous control of ants.

PRECAUTIONARY STATEMENTS:

HAZARDS TO HUMANS AND DOMESTIC ANIMALS.

CAUTION:

Wash thoroughly with soap and water after handling bait stations.

STATEMENT OF PRACTICAL TREATMENT: If swallowed, drink two glasses of water and induce vomiting by touching back of throat with finger. Do not induce vomiting or give anything by mouth to an unconscious person. Get medical attention. In case of emergency, call day or night, 1-800-426-6228. QUESTIONS? COMMENTS? CALL 1-800-426-6228.

STORAGE AND DISPOSAL: Do not contaminate water, food or feed by storage or disposal. Do not remove baits from [bait] station[s]. Wrap bait stations in several layers of newspaper and discard in trash.

Mfd. for -or- Distributed by &

© 1997 MAXFORCE Insect Control Systems, 1221 Broadway, Oakland, CA 94612

And, see the Maxforce website at www.maxforce.com.

EPA Reg. No. 64248-XX EPA Est. No. 5813-MS-01.

U.S. Patent Nos. _____ and other patents pending.

5/5

EPA 64248-XX

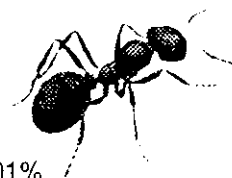
UNIT LABEL

MAXFORCE[®]

Ant Bait F3

THIS SIDE DOWN OR AGAINST SURFACE

Note: Do not remove or puncture this label



ACTIVE INGREDIENT: Fipronil 0.001%

INERT INGREDIENTS: 99.999%

DO NOT ALLOW CHILDREN OR PETS TO PLAY WITH THE STATION

CAUTION:

Wash thoroughly with soap and water after handling.

DISPOSAL: Wrap used station in several layers of newspaper and place -or- discard in trash.

For Questions or comments about MAXFORCE, call toll free 1-800-426-6228

Mfd. for -or- Distributed by & © 1997:
Maxforce Insect Control Systems
1221 Broadway
Oakland, CA 94612

EPA Reg. No. 64248-XX
EPA Est. No. 5813-MS-01

SEE OUTER BAG FOR COMPLETE DIRECTIONS AND PRECAUTIONS

Net Weight 0.05 oz (1.5g)

RU-10153-1 (master)

R-10198-1 (master)