

PM03 64248-10 4/16/98

1/4

UNITED STATES ENVIRONMENTAL PROTECTION AGENCY

Best Available Copy

APR 16 1998

Stephen Smith
Maxforce Insect Control Systems
c/o PS & RC
P.O. Box 493
Pleasanton, CA 94566-0803

Dear Mr. Smith:

Subject: Maxforce Ant Bait F1
EPA Reg. No. 64248-10
Submission dated 3/20/98

The labeling referred to above, submitted in connection with registration under the Federal Insecticide, Fungicide, and Rodenticide Act, as amended, is acceptable subject to the comments listed below. One copy of the finished labeling must be submitted prior to releasing the product for shipment.

You are reminded that the term "new" can be used only for six months following date of registration or the date the product is first released for shipment, whichever is later.

Each marketing claim referring to outdoor(s) must clarify that it is outdoor(s) adjacent to the home or structure.

Correct the technical name for GABA to read "Gamma Amino Butyric Acid."

If you have questions, please call Ann Sibold at 703 305-6502.

Sincerely,

Marion J. Johnson, Jr.
Marion J. Johnson, Jr.
Product Manager 3
Insecticide Branch

CONCENTRATION DIVISION (7505C)

SYMBOL	PM3							
SURNAME	Sibold							
DATE	3/20/98							

NEW **SINGLES** IN A RESEALABLE BAG TEAR HERE TO OPEN

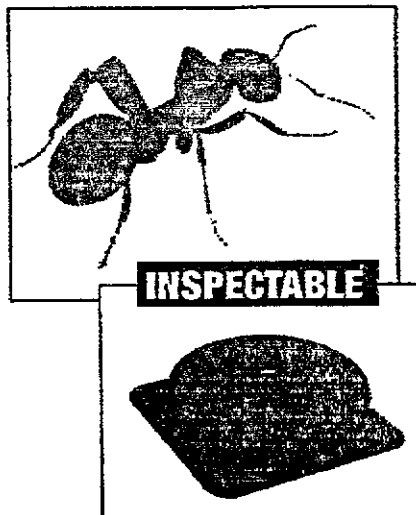
MAX FORCE

ANT BAIT F1

- Kills ants in 1 day*
- Kills ants overnight*
- Starts killing ants in 6 hours*
- Overnight killing action*
- Visible results overnight*
- See results overnight*
- Overnight results*
- Kills within hours*
- You should see dead ants overnight*
- Fast kill in 1 day (with Fipronil)
- Kills ants faster than before** - or - faster than Maxforce Professional Insect Control Ant Killer Bait Stations*
- Maxforce Professional Insect Control Ant Killer Bait Stations*
- Faster acting (killing) formula vs. Maxforce Professional Insect Control Ant Killer Bait Stations*
- Kills ants in 1-7 days
- [New] Kills ants quickly*
- [New] Quick kill formula*
- [New] fast formula*
- Kills the queen and [the] entire colony
- Destroys the nest/colony
- Kills the ant nest [colony]
- Kills the ants you see and ones you don't see
- Destroys queen and colony
- Kills ants continuously
- Kills non-stop
- Long lasting power

- Kills quickly and keeps on killing
- Ongoing ant control
- Non-stop ant control
- Provides long lasting ant killing power
- Kills ants without messy residue and without insecticide odors/tunes
- Kills common household ants, including Pharaoh Ants and Argentine Ants
- Leaves no residue or odor
- Kills indoor and outdoor ants
- Kills grease and sugar loving ants
- Kills entire colony
- One box is powerful enough to kill the entire colony [nest]
- Kills ants without insecticide odors [tunes]
- Ants carry bait back to the colony so it can kill the queen and other ants so they don't invade your home
- Kills ants outdoors so they don't invade your home
- Kills the entire ant colony so they don't invade your home
- Kills common outdoor ants
- Kills the queen and the entire colony
- Fast control (with Fipronil)

* Except Fire Ants



Effective Against:
 Pharaoh Ants
 Odorous House Ants
 Black Carpenter Ant
 Florida Carpenter Ants
 Argentine Ants
 Carpenter Ants
 Pavement Ants
 Crazy Ants
 Cornfield Ants
 Acrobat Ants
 Thief Ants
 Fire Ants

KEEP OUT OF REACH OF CHILDREN

CAUTION:

(See Precautions on Side -or- Back Panel)

Contains 24 Bait Stations

for carton only:



[The paperboard in this] [Carton]
 [contains] [is made from] [recycled fiber] [minimum] [post-consumer content]

For use in commercial, industrial and residential areas.

ACTIVE INGREDIENT: Fipronil [5-Amino-1-(2,6-dichloro-4-(trifluoromethyl)phenyl)-4-(1, R, S)-(trifluoromethyl)sulfinyl]-1H-pyrazole-3-carbonitrile] 0.01%
 INERT INGREDIENTS: 99.99%

TOTAL NET WT 1.3 oz (36 g.)
 TOTAL NET WT PER UNIT 0.05 oz (1.5 g.)

R-10001-7

ACCEPTED
 with **COMMENTS**
 In EPA Letter Date

APR 16 1998

Under the Federal Insecticide,
 Fungicide, and Rodenticide Act,
 as amended, for the pesticide
 registered under EPA Reg. No.

314

MAXFORCE

ANT BAIT F1

MAXFORCE® Ant Bait F1 contains a patented bait formulation which kills common household ants including Pharaoh Ants and Argentine Ants. [See side-or-front panel for other species.] When properly used, MAXFORCE Ant Bait F1 will attract foraging worker ants. The ants will feed on the bait which contains the active ingredient Fipronil. Then, the worker ants will take some of this bait back to the nest where they will pass it on to destroy the queen and the entire colony. MAXFORCE Ant Bait F1 will kill both adult and larval ant forms.

Do not use residual sprays with or near the MAXFORCE bait stations, as the worker ants must remain alive to carry the bait back to the queen and immature workers. Residual sprays may cause worker ants to spread out and form secondary colonies. MAXFORCE Ant Bait F1 works because it is non-repellent and thus will not cause secondary colony formation.

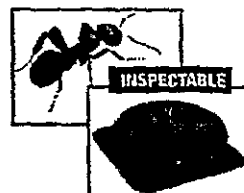
MAXFORCE Ant Bait F1 bait stations have no insecticide odor, are child-resistant and easy to use. The patented bait station design allows you to inspect each bait placement and monitor the amount of ant feeding. They may be used for the control of ants wherever they are a problem (e.g. hospitals, nursing homes, day care centers, schools, aircraft, residential establishments, warehousing and commercial establishments, food service, food manufacturing and food processing facilities, laboratories, computer and electronic equipment facilities, pet shops, zoos, buses, boats and trains).

MAXFORCE Ant Bait F1 contains Fipronil, [a new] active ingredient which kills ants by ingestion and contact. In the process of ingestion or contact, Fipronil [the active ingredient] acts by blocking the GABA (Alpha Amino Butyric Acid) receptor chloride channel. Once chloride ions cannot pass through the channel, depolarization ensues resulting in continued release of excitatory transmitters and hyperexcitation of the neuron. Worker ants that have been contaminated feed the bait to the larvae in the colony. The larvae digest the solid bait and produce a liquid output that contains fipronil - that they feed to the rest of the colony and queen(s). This Maxforce Domino Effect™ eliminates the entire colony.

DIRECTIONS FOR USE: It is a violation of Federal Law to use this product in a manner inconsistent with its labeling.

1. Simply place each bait station indoors or outdoors (adjacent to home-or-structure) immediately next to ant trails or close to areas where ants are numerous. Nests are usually located in dark, humid and warm areas close to a water and food source. For maximum effectiveness in ant control the bait station should be placed in or near wall voids, electrical outlets (if wiring permits), potted plants, waste-paper baskets, garbage cans and sinks. Bait stations can be placed in cabinets, next to dishes, near sensitive equipment or anywhere your ant problem occurs.
2. **INDOOR USE:** For normal infestations, you should use 3 MAXFORCE Ant Bait F1 bait stations in an average sized room. For heavier infestations, you will need additional bait stations in each room. If infestation persists beyond two weeks, replace all bait stations where the bait has been completely consumed and re-locate bait stations that show no evidence of ant feeding.

3. **OUTDOOR USE:** Bait stations should be placed adjacent to the home-or-structure near ant activity or anywhere ants may gain access to the home-or-structure. Application sites include electrical conduits, vents, pipe chases, concrete slabs, skylights on roofs; around ant mounds, garbage cans, and trees; along walls, windowsills, sidewalks and driveways; on ground around home-or-structure.



4. The stickers provided in the box can be used to attach the bait stations to vertical surfaces if desired.-or-
4. The bait stations can be stuck on a vertical surface by peeling off the protective strip to expose adhesive.
5. Do not spray the bait stations. Avoid placing the bait stations on freshly sprayed surfaces.
6. Increased ant activity may be seen near the bait stations immediately after placement but you can expect to see less activity within 1-3 days -or- a few days -or- one week. After placement, ant trails may be observed between the bait stations and the nests. For best results, do not interfere with the ants or the stations during their use because ants must carry the bait back to destroy the queen and colony.
7. Inspect all bait stations and replace as needed for continuous control of ants.

PRECAUTIONARY STATEMENTS:

HAZARDS TO HUMANS AND DOMESTIC ANIMALS.

CAUTION

Wash thoroughly with soap and water after handling bait stations.

STORAGE AND DISPOSAL: Do not contaminate water, food or feed by storage and disposal.

STORAGE: Store in a cool dry area out of reach of children.
DISPOSAL: Wrap bait stations in several layers of newspaper and discard in trash.

Distributed by & © 1995 MAXFORCE Insect Control Systems
221 Broadway, Oakland, CA 94612

For questions or comments about MAXFORCE®, call toll free 1-800-426-6228

or:
QUESTIONS? COMMENTS? CALL 1-800-426-6228

And, see the Maxforce website at www.maxforce.com.

EPA Reg. No. 64248-10 EPA Est. No. 5813-MS-01.

U.S. Patent Nos. _____ and other patents pending.

4/4

UNIT LABEL

MAXFORCE

ANT BAIT F1

THIS SIDE DOWN OR AGAINST SURFACE

Note: Do not remove or puncture this label



ACTIVE INGREDIENT: Fipronil 0.01%
INERT INGREDIENTS: 99.99%

DO NOT ALLOW CHILDREN OR PETS TO PLAY WITH THE BAIT STATIONS.

CAUTION:

Wash thoroughly with soap and water after handling.

Do not contaminate water, food or feed by storage or disposal.

DISPOSAL: Wrap used station in several layers of newspaper and discard in trash.

For Questions or comments about MAXFORCE, call toll free 1-800-426-6228

Distributed by & © 1995:
Maxforce Insect Control Systems
1221 Broadway
Oakland, CA 94612

EPA Reg. No. 64248-10
EPA Est. No. 5813-MS-01

SEE OUTER CARTON FOR COMPLETE DIRECTIONS AND PRECAUTIONS

Net Weight 0.05 oz (1.5 g.)

RLA-0001-5