

PM 10

64248-10

UNITED STATES ENVIRONMENTAL PROTECTION AGENCY

1/6



U.S. ENVIRONMENTAL PROTECTION AGENCY
Office of Pesticide Programs
Registration Division (7505C)
401 "M" St., S.W.
Washington, D.C. 20460

EPA Reg. Number:

64248-10

Date of Issuance:

MAR 13 1997

Term of Issuance:

Conditional

Name of Pesticide Product:

Ant Bait F1

NOTICE OF PESTICIDE:

 x Registration
 Reregistration

(under FIFRA, as amended)

Name and Address of Registrant (include ZIP Code):

J. Evelyn Lawson
Maxforce Insect Control Systems
c/o PS&RC
P.O. Box 493
Pleasanton, CA 94566-0803

Note: Changes in labeling differing in substance from that accepted in connection with this registration must be submitted to and accepted by the Registration Division prior to use of the label in commerce. In any correspondence on this product always refer to the above EPA registration number.

On the basis of information furnished by the registrant, the above named pesticide is hereby registered/reregistered under the Federal Insecticide, Fungicide and Rodenticide Act.

Registration is in no way to be construed as an endorsement or recommendation of this product by the Agency. In order to protect health and the environment, the Administrator, on his motion, may at any time suspend or cancel the registration of a pesticide in accordance with the Act. The acceptance of any name in connection with the registration of a product under this Act is not to be construed as giving the registrant a right to exclusive use of the name or to its use if it has been covered by others.

This product is conditionally registered in accordance with FIFRA sec. 3(c)(7)(A) provided that you:

1. Submit and/or cite all data required for registration of your product under FIFRA sec. 3(c)(5) when the Agency requires all registrants of similar products to submit such data; and submit acceptable responses required for reregistration of your product under FIFRA section 4.

2. Make the following label changes:

- a. Revise the EPA Registration Number to read, "EPA Reg. No. 64248-10".
- b. You must add Precautionary Statements to the package label as follows:
Precautionary Statements
Hazard to Humans and Domestic Animals
CAUTION
Wash thoroughly with soap and water after handling bait stations.

Signature of Approving Official:

RPK

Date:

MAR 13 1997

EPA Form 8570-6

CONCURRENCES

| | | | | | | | |
|---------|-----------|--|--|--|--|--|--|
| SYMBOL | PMT 10 | | | | | | |
| SURNAME | A. Sibola | | | | | | |
| DATE | 3/11/97 | | | | | | |

2/6

- c. Delete or justify the following claims:
Claims relating to egg-killing or egg-stopping;
Claims relating to killing or starting to kill faster than 77 hours or seeing results sooner than 77 hours;
Claims relating to killing 10,000 or more ants.
- d. Clarify claims that outdoor use means outdoors adjacent to the home or structure.
- e. Delete all comparative claims, such as "kills ants faster," "faster acting."
- f. Claims that the product is "new" may be used up to 6 months from the date of registration.
- g. You must modify the label as follows:
In connection with the acceptable Child Resistant Packaging (CRP) study which you submitted or cited, the following specifications must appear on the package labeling:
Contains 24 bait stations
Total net weight 1.3 oz (36 g.)
- h. The Precautionary Statement on the front panel must be revised to read as follows:
See Precautions on Side -or- Back Panel.
- i. The Storage and Disposal Instructions must be modified as follows and moved to the end of the Directions for Use:
Storage and Disposal
Do not contaminate water food or feed by storage and disposal.
Storage: Store in a cool dry area out of reach of children.
Disposal: Wrap bait stations in several layers of newspaper and discard in trash.
- j. The directions for use must be modified as follows:
Delete directions to place bait stations next to food.

Items 1 and 3 of the directions for use must state that outdoor use and use on ant mounds is limited to use adjacent to structures.

Delete air conditioners from the directions for use.

Item 4, second sentence must read: The Bait stations can be stuck on a vertical surface by peeling off the protective strip to expose adhesive.

3/6
Delete from the Directions for use the text which describes how fipronil works and the sentence about the product contains an odorless bait. These items are not directions for use. You may use them as marketing claims.

- k. In the ingredient statement, delete the underlining from ...-1H-pyrazole...
- j. The bait station label must be modified as follows:
Disposal: Wrap used bait station in several layers of newspaper and discard in trash.

The Net wt. must read 0.05 oz. (1.5 g.)

In the ingredient statement, delete the underlining from ...-1H-pyrazole...

You must add to the Precautionary Statements the following:
Wash thoroughly with soap and water after handling bait stations.

3. Submit for the record a formulator's exemption revised so that the sources of active ingredient are consistent with the Confidential Statement of Formula.

4. Submit a revised child resistant packaging certification that specifies that the package does not comply with the senior and younger adult effectiveness specifications.

5. Submit two copies of the revised final printed label for the record.

Under 40 CFR 157.32(a) child resistant packaging for pesticides must meet the effectiveness specifications described in 16 CFR 1700.15(b) when tested by the protocol specified in 16 CFR 1700.20. The Agency has recently granted an exemption from the adult effectiveness specification as described in 16 CFR 1700.15(b)(2) ease of adult opening. The Agency will publish a Notice in the Federal Register of the granting of the exemption. This exemption applies only to prefilled, nonrefillable insecticide bait stations that are not designed or intended to be opened or activated in a manner that exposes the contents to human contact. This exemption is only from the adult effectiveness specifications as described in 16 CFR 1700.15(b)(2) ease of adult opening. The exemption will be for a five year time period and will apply to other products of substantially similar composition and intended uses.

Any changes to the packaging or contents must be approved by the Agency prior to market introduction. Any alterations to the bait station and/or its contents will require submission and review of appropriate data by the Agency prior to any institution of the package change.

If these conditions are not complied with, the registration

NEW **SINGLES** IN A RESEALABLE BAG TEAR HERE TO OPEN 

MAX FORCE[®]

ANT BAIT F1

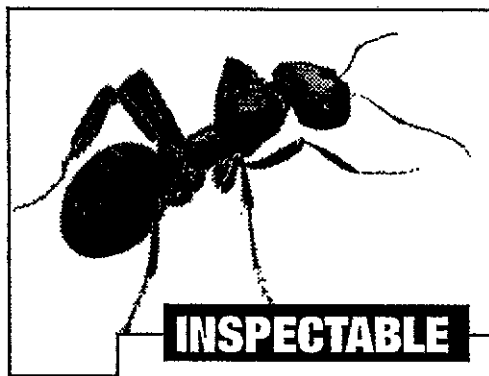
- [New] Kills ants quickly
- [New] Kills ants overnight
- Overnight ant control
- Starts killing ants in 6 hours
- Overnight ant killing action
- [New] kills overnight
- Kills ants in hours
- New overnight action
- Kills ants faster
- [New] fast(er) formula
- [New] fast(er) acting/killing formula
- Starts killing ants immediately
- Visible results overnight
- See results overnight
- Overnight results
- Kills within hours
- [New] Quick kill formula
- [New] fast formula
- You should see dead ants overnight
- Kills the queen and [the] [entire] colony
- Destroys the nest/colony
- Kills the ant source
- Kills all ant stages, including the eggs
- Kills the ant egg source
- Kills the ant nest fast
- Kills the nest fast
- Fast nest kill
- Kills the ant nest [colony]
- Kills eggs faster
- Faster egg kill [stop] formula

- Kills the ants you see and ones you don't see
- Destroys queen and colony
- Kills ants continuously
- Kills non-stop
- Long lasting power
- Kills quickly and keeps on killing
- Ongoing ant control
- Non-stop ant control
- Provides long lasting ant killing power
- Kills ants without messy residue and without insecticide odors/fumes
- Once box can kill 10,000 ants
- Kills common household ants, including Pharaoh Ants, Argentine Ants, and Fire Ants
- Kills Fire Ants
- Leaves no residue or odor
- Kills indoor and outdoor ants
- Kills grease and sugar loving ants
- Kills entire colony
- One box is powerful enough to kill the entire colony [nest]
- Kills ants without insecticide odors [fumes]
- Powerful enough to kill [more than] 10,000 ants
- Ants carry bait back to the colony to kill the queen and other ants before they come inside your home
- Kills ants outdoors before they come indoors
- Kills the entire ant colony before they come indoors
- Kills common outdoor ants, including fire ants
- Kills the queen and the entire colony

ACCEPTED
with COMMENTS
In EPA Letter Dated

MAR 13 1997

Under the Federal Insecticide,
Fungicide, and Rodenticide Act
Registration No. 64348-10
Registered under EPA Reg. No.



INSPECTABLE



Effective Against:

Pharaoh Ants
Odorous House Ants
Black Carpenter Ant
Florida Carpenter Ants
Argentine Ants
Carpenter Ants
Red Imported Fire Ants
Pavement Ants
Crazy Ants
Cornfield Ants
Acrobat Ants
Thief Ants

CAUTION: KEEP OUT OF REACH OF CHILDREN
(See Cautions on Side -or- Back Panel)

Contains ___ Child-Resistant Bait Stations

for carton only:



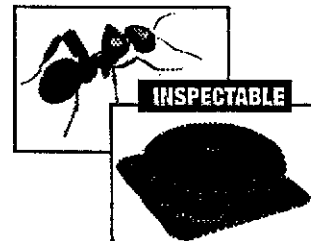
[The paperboard in this] [C]carton
[contains] [is made from] ___ %
recycled fiber (minimum ___ %
post-consumer content).

ACTIVE INGREDIENT: Fipronil [5-Amino-
1-(2,6-dichloro-4-(trifluoromethyl)
phenyl)-4-(1,R,S)-(trifluoromethyl)
sulfinyl)-1H-pyrazole-3-carbonitrile] 0.01%
INERT INGREDIENTS: 99.99%

TOTAL NET WT _____
_____ per unit

MAXFORCE[®]

ANT BAIT F1



DIRECTIONS FOR USE It is a violation of Federal Law to use this product in a manner inconsistent with its labeling.

Simply place each bait station indoors or outdoors immediately next to ant trails or close to areas where ants are numerous. Nests are usually located in dark, humid and warm areas close to a water and food source. For maximum effectiveness in ant control the bait station should be placed in or near wall voids, electrical outlets (if wiring permits), potted plants, waste-paper baskets, garbage cans and sinks. Bait stations can be placed in cabinets, next to food and dishes, near sensitive equipment or anywhere your ant problem occurs.

2. **INDOOR USE:** For normal infestations, you should use 3 MAXFORCE Ant Bait F1 bait stations in an average sized room. For heavier infestations, you will need additional bait stations in each room. If infestation persists beyond two weeks, replace all bait stations where the bait has been completely consumed and re-locate bait stations that show no evidence of ant feeding.
3. **OUTDOOR USE:** Bait stations should be placed near ant activity or anywhere ants may gain access to the structure. Application sites include air conditioning units, electrical conduits, vents, pipe chases, concrete slabs, skylights on roofs; around ant mounds, garbage cans, and trees; along walls, windowsills, sidewalks and driveways; on ground around structure.
4. The stickers provided in the box can be used to attach the bait stations to vertical surfaces if desired. -or-
4. The bait stations can be stuck on a vertical surface by peeling off the bottom label to expose adhesive.
5. Do not spray the bait stations. Avoid placing the bait stations on freshly sprayed surfaces.
6. Increased ant activity may be seen near the bait stations immediately after placement but you can expect to see less activity within one week. After placement, ant trails may be observed between the bait stations and the nests. For best results, do not interfere with the ants or the stations during their use because ants must carry the bait back to destroy the queen and colony.
7. Inspect all bait stations and replace as needed for continuous control of ants.

MAXFORCE[®] Ant Bait F1 contains a patented bait formulation which kills common household ants including Pharaoh ants, Argentine ants and Fire ants. [See side -or- front panel for other species.] When properly used, MAXFORCE Ant Bait F1 will attract foraging worker ants. The ants will feed on the bait which contains the active ingredient Fipronil. Then, the worker ants will take some of this bait back to the nest where they will pass it on to destroy the queen and the entire colony. MAXFORCE Ant Bait F1 will kill both adult and larval ant forms.

Do not use residual sprays with or near the MAXFORCE bait stations, as the worker ants must remain alive to carry the bait back to the queen and immature workers. Residual sprays may cause worker ants to spread out and form secondary colonies. MAXFORCE Ant Bait F1 works because it is non-repellent and thus will not cause secondary colony formation.

MAXFORCE Ant Bait F1 bait stations have no insecticide odor, are child-resistant and easy to use. The patented bait station design allows you to inspect each bait placement and monitor the amount of ant feeding. They may be used for the control of ants wherever they are a problem (e.g. hospitals, nursing homes, day care centers, schools, aircraft, residential establishments, warehousing and commercial establishments, food service, food manufacturing and food processing facilities, laboratories, computer and electronic equipment facilities, pet shops, zoos, buses, boats and trains).

PRECAUTIONARY STATEMENTS:

CAUTION: HAZARDS TO HUMANS AND DOMESTIC ANIMALS.

May be harmful if swallowed.

STATEMENT OF PRACTICAL TREATMENT: If swallowed, drink two glasses of water and induce vomiting by touching back of throat with finger. Do not induce vomiting or give anything by mouth to an unconscious person. Get medical attention. In case of emergency, call day or night, 1-800-426-6228.

STORAGE AND DISPOSAL: Do not contaminate water, food or feed by storage or disposal. Do not remove bait[s] -or- [bait stations] from container -or- station[s]. Wrap used [bait] stations and put in [a garbage can] -or- [trash can].

© 1995 MAXFORCE Insect Control Systems, 1221 Broadway, Oakland, CA 94612

EPA Reg. No. 64248-XX EPA Est. No. 5813-MS-01.

R-10001-1

The artwork is shown below at 200% of actual size.

9/6

MAXFORCE

ANT BAIT F1

[THIS SIDE DOWN. This side should be placed against surface.]

[NOTE: Do not remove or puncture label.]

FOR USE IN COMMERCIAL, INDUSTRIAL AND RESIDENTIAL AREAS

ACTIVE INGREDIENT: Fipronil [5-Amino-1-(2,6-dichloro-4-(trifluoromethyl)phenyl)-4-(1,3,5-(trifluoromethyl) sulfinyl)-1H-pyrazole-3-carbonitrile] 0.01%
INERT INGREDIENTS: 99.99%

KEEP OUT OF REACH OF CHILDREN

CAUTION: May be harmful if swallowed.

DISPOSAL: Wrap used (bait) stations and put in [a garbage can] -or- [trash can].

STATEMENT OF PRACTICAL TREATMENT: If swallowed, drink two glasses of water and induce vomiting by touching back of throat with finger. Do not induce vomiting or give anything by mouth to an unconscious person. Get medical attention.

For questions or comments [about MAXFORCE], [please] call [toll free] the [MAXFORCE® Labs Helpline at] 1-800-426-6228.

© 1995 Maxforce Insect Control Systems

1221 Broadway, Oakland, CA 94612

NET WT _____

EPA Reg. No. 64248-XX

EPA Est. No. 5813-MS-01

SEE OUTER CARTON FOR COMPLETE
DIRECTIONS AND PRECAUTIONS.

CAUTION: DO NOT ALLOW CHILDREN OR PETS TO PLAY WITH THE BAIT STATION.

Placement Date _____

RU-10001-1