

PM 03

64240-35

12/11/97

PM 127



U.S. ENVIRONMENTAL PROTECTION AGENCY  
Office of Pesticide Programs  
Registration Division (H7505C)  
401 "M" St., S.W.  
Washington, D.C. 20460

EPA Reg. Number:

Date of Issuance:

64240-35

DEC 11 1997

Term of Issuance: Conditional

Name of Pesticide Product:

Combat® Roach Gel

NOTICE OF PESTICIDE:

- Registration
- Reregistration

(under FIFRA, as amended)

Name and Address of Registrant (include ZIP Code):

Combat Insect Control Systems  
c/o PS&RC  
P.O. box 493  
Pleasanton, CA 94566-0803

Note: Changes in labeling differing in substance from that accepted in connection with this registration must be submitted to and accepted by the Registration Division prior to use of the label in commerce. In any correspondence on this product always refer to the above EPA registration number.

On the basis of information furnished by the registrant, the above named pesticide is hereby registered/reregistered under the Federal Insecticide, Fungicide and Rodenticide Act.

Registration is in no way to be construed as an endorsement or recommendation of this product by the Agency. In order to protect health and the environment, the Administrator, on his motion, may at any time suspend or cancel the registration of a pesticide in accordance with the Act. The acceptance of any name in connection with the registration of a product under this Act is not to be construed as giving the registrant a right to exclusive use of the name or to its use if it has been covered by others.

This product is conditionally registered in accordance with FIFRA sec. 3(c)(7)(A) provided that you:

1. Submit and/or cite all data required for registration of your product under FIFRA sec. 3(c)(5) when the Agency requires all registrants of similar products to submit such data; and submit acceptable responses required for reregistration of your product under FIFRA section 4.

2. Make the following label changes:

- a. Revise the EPA Registration Number to read, "EPA Reg. No. 64240-35"
- b. Rephrase the language on the front panel under the "CAUTION" statement "USE ONLY IN AREAS NOT EASILY ACCESSIBLE TO CHILDREN AND PETS." to "USE ONLY IN AREAS NOT ACCESSIBLE TO CHILDREN AND PETS." or "USE ONLY IN AREAS INACCESSIBLE TO CHILDREN AND PETS." on all labels.
- c. The signal word "CAUTION" must be inserted on the Unit label between the statements "KEEP OUT OF REACH OF CHILDREN" and the corrected language listed in item "2b." above.

Signature of Approving Official:

*M. J. Johnson* / PM, Insecticide Div.

Date:

DEC 11 1997

27

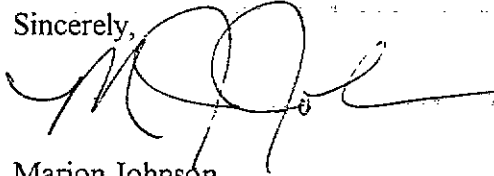
page 2  
EPA Reg. No.

3. The corrected CSF's submitted to the Agency on September 12, 1997 (basic and A01) have been reviewed, and all formulations for this product are in compliance with the Agency's January 19, 1995 directive regarding this consumer gel product.
3. Submit two copies of the revised final printed label for the record.

If these conditions are not complied with, the registration will be subject to cancellation in accordance with FIFRA sec. 6(e). Your release for shipment of the product constitutes acceptance of these conditions.

A stamped copy of the label is enclosed for your records.

Sincerely,



Marion Johnson  
Product Manager 10  
Insecticide Branch  
Registration Division (7505C)

3/7

Combat Roach Gel  
UNIT LABEL  
EPA Reg. No. 64240-XX



Refer to outer box for complete Directions for Use.  
KEEP OUT OF REACH OF CHILDREN  
USE ONLY IN AREAS NOT EASILY ACCESSIBLE  
TO CHILDREN AND PETS.

<b>ACTIVE INGREDIENT:</b> Hydramethylnon [Tetrahydro-5,5-dimethyl-2(1H)-pyrimidinone, (3-(4-(trifluoromethyl)phenyl)-1-(2-(4-(trifluoromethyl)phenyl)ethenyl)-2-propenylidene)hydrazone]	2.15%
<b>INERT INGREDIENTS:</b>	97.85%
<b>TOTAL</b>	100.00%

**PRECAUTIONARY STATEMENTS**

**HAZARDS TO HUMANS AND DOMESTIC ANIMALS**

**CAUTION:** May be harmful if swallowed. Avoid contact with skin and clothing. Keep exposed gel away from open foods and food contact surfaces. Wash hands thoroughly after handling.

**FIRST AID/STATEMENT OF PRACTICAL TREATMENT:** If swallowed, drink two glasses of water and induce vomiting by touching back of throat with finger. Do not induce vomiting or give anything by mouth to an unconscious person. Get medical attention. In case of emergency, call day or night: 1-800-426-6228.

**STORAGE AND DISPOSAL:** Store in cool, dry area. Do not contaminate water, food or feed by storage or disposal. Wrap used pre-filled plastic dispenser[s] -or- reservoir[s] -or- syringe[s] and place in a trash can.

© 1996 COMBAT Insect Control Systems 1221 Broadway, Oakland, CA 94612  
EPA Reg. No. 64240- EPA Est. No.

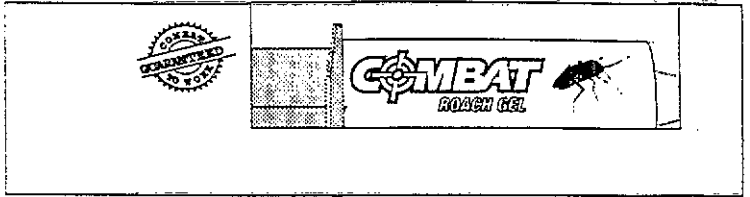
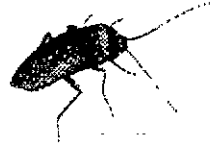
U.S. PATENT NOS.  
4,163,102; 4,213,988;  
4,191,768; 4,812,309

NET WT. \_\_\_\_\_

467

Combat Roach Gel  
EPA Reg. No. 64240-XX

# COMBAT ROACH GEL



- for front or back:*
- Egg Stopping Gel
  - Female roaches carry the egg sac and stay near the nest.
  - This product can be applied behind appliances and into cracks and crevices, right into roach nesting areas where pregnant -or- egg-bearing roaches are hiding.
  - Many bait placements of this product close to the nest means that more roaches eat the bait and more roaches die.
  - Complete control by targeting nests and eliminating eggs.
  - Complete roach control by targeting their nests and eliminating the eggs they carry.
  - This product controls roaches by targeting the nest and eliminating eggs -or- the eggs they carry.
- for front or back:*
- This product controls by targeting the nest and eggs.
  - This product controls roaches by targeting the nest and the eggs they carry.
  - Roach & Egg Control Gel
  - Kills pregnant roaches where they live -or- hide.
  - Targeted roach [and egg] control.
  - A Totally new approach to killing -or- controlling roaches and eggs.
  - A totally new approach to killing -or- controlling roaches and eggs they carry.
  - Kills without a trace.
  - For cracks and crevices.
  - For hard to reach places.
  - Kills roaches and the eggs they carry.
- Gets roaches where they enter your home.
  - Can be applied out of reach of children and pets.
  - Can be applied in hidden -or- small -or- hard to reach places so it's out of sight and your roach problem out of mind.
  - Can be applied -or- hidden in places where roaches will notice it, but you won't.
  - Kills existing roaches and stops new roaches from hatching.
  - Continued use keeps roaches under control.
  - Guaranteed to work or your money back.

Combat's patented action formula provides complete roach control by killing roaches and the eggs they carry. This gel can be injected -or- applied behind appliances and in cracks and crevices, right near the places where roaches make their nests or enter your home. Combat (also) allows you to place bait in many more locations in your home, which means more roaches find and eat the bait, and more roaches die.

Combat targets roach nesting areas -or- places where roaches enter your home.

Combat's patented action formula provides complete roach control by targeting roach nesting areas. This gel can be injected behind appliances and in cracks and crevices, right near nesting areas where egg-bearing -or- pregnant roaches are hiding. Combat also allows you to place bait in many more locations in your home, which means more roaches contact -or- find and eat the bait, and more roaches die.

KEEP OUT OF REACH OF CHILDREN

## CAUTION:

(See cautions on end -or- side -or- bottom panel)

USE ONLY IN AREAS NOT EASILY ACCESSIBLE TO CHILDREN AND PETS.

ACTIVE INGREDIENT: Hydramethylnon [Tetrahydro-5,5-dimethyl-2(1H)-pyrimidinone, (3-(4-(trifluoromethyl)phenyl)-1-(2-(4-(trifluoromethyl)phenyl)ethenyl)-2-propenylidene)hydrazone]	2.15%
INERT INGREDIENTS:	97.85%
TOTAL	100.00%

[The paperboard in this] [Carton contains] [is made from] \_\_\_\_\_% recycled fiber (minimum \_\_\_\_\_% post-consumer content).



### PRECAUTIONARY STATEMENTS

#### HAZARDS TO HUMANS AND DOMESTIC ANIMALS

**CAUTION:** May be harmful if swallowed. Avoid contact with skin and clothing. Keep exposed gel away from open foods and food contact surfaces. Wash hands thoroughly after handling.

**FIRST AID/STATEMENT OF PRACTICAL TREATMENT:** If swallowed, drink two glasses of water and induce vomiting by touching back of throat with finger. Do not induce vomiting or give anything by mouth to an unconscious person. Get medical attention. In case of emergency, call day or night, 1-800-426-6228.

**STORAGE AND DISPOSAL:** Store in a cool, dry area. Do not contaminate water, food or feed by storage or disposal. Wrap used pre-filled plastic dispenser[s] -or- reservoir[s] -or- syringe[s] -or- roach bait injector[s] and place in a trash can.



Under the Insecticide, Fungicide, and Rodenticide Act as amended, few the pesticide registered under EPA Reg. No. 64240-XX

RECD 96 DEC 27 11:08:34

ACCREDITED WITH CONFIDENCE In EPA REG. NO. 64240-XX

DEC 11 1997

Combat Roach Gel  
EPA Reg. No. 64240-XX

for front or back

### Small Cockroaches:

- Kills Eggs
- Breaks the Roach Life Cycle
- EggStopping Ingredient -or- Formula
- Prevents Egg Production
- Prevents Roach Reproduction
- Prevents Egg Hatching
- Inhibits Egg Production
- Inhibits Roach Reproduction
- Inhibits Egg Hatching
- Reproduction Inhibiting Ingredient -or- Formula
- Egg Inhibiting Ingredient -or- Formula
- Patented Action EGG Control
- Sterilizes female roaches
- Creates females that are unable to produce eggs
- As The Domino Effect™ spreads through the roach population, most roaches are killed, and still others lose their ability to produce eggs.

- This product's patented action formula kills roaches and the eggs they carry.
- As The Domino Effect™ spreads through the roach population, roaches that are affected either die or lose their ability to produce eggs.
- [This product] offers -or- provides complete roach control.
- [This product] offers -or- provides maximum roach control.
- [This product] offers -or- provides maximum egg control.
- (This product) causes pregnant -or- egg-bearing roaches to lose their eggs, and prevents -or- inhibits production of new eggs in the population.
- Controls roaches two ways, by killing adults and preventing reproduction in others.
- (This product) attacks -or- disrupts the reproductive system -or- cycle of roaches.
- Depending on the amount of poison ingested, this

- product works by either killing or sterilizing the roaches.
- Kills roaches and the eggs they carry 24 hours a day, 7 days a week.
- Kills roaches and the eggs they carry while you sleep.
- Kills roaches and eggs while you sleep.
- Kills roaches and eggs 24 hours a day, 7 days a week.
- Eliminates roaches and the eggs they carry.
- Kills roaches and the eggs they carry without vapors or fumes.
- Destroys -or- Kills the egg machine.
- Controls roaches by targeting the nest and the eggs they carry.

### Large Cockroaches:

- Even kills roaches resistant to pyrethroids and organophosphates.
- New Improved Formula
- New! Improved Roach Control

- New! Greater Roach Control
- New! Better Roach Control
- Kills roaches and the eggs they carry.
- Guaranteed to work or your money back.

- This product may be used as a spot or crack and crevice treatment for the indoor and outdoor control of cockroaches.
- Pest population reduction will be apparent within a week or less.

for front or back

Product is easy to use: Targets the nest. Combat gel can be injected -or- applied behind appliances and in cracks and crevices near roach nesting areas which are the source of roach problems.

Combat Roach Gel may be used as a spot or crack and crevice treatment for the indoor and outdoor control of cockroaches.

Product may stain textiles and clothing.

Contains \_\_\_ pre-filled plastic dispenser[s] -or- reservoir[s] -or- syringe[s]

TOTAL NET WT \_\_\_\_\_



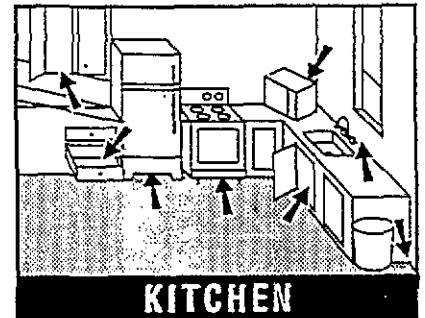
Combat Roach Gel  
EPA Reg. No. 64240-XX



**DIRECTIONS FOR USE:**

It is a violation of Federal law to use this product in a manner inconsistent with its labeling.

1. Determine where to place gel: Place gel in areas where you've seen many roaches and where they can come in or may be hiding. Do not place in areas that are frequently -or- routinely washed. Suggested -or- Most Important -or- Typical Indoor Locations: (Especially) In the kitchen and bathroom, in cracks, crevices, corners and small or hard to reach areas such as under sinks, around pipes and water heaters where they meet the wall, under and inside cabinets along seams, along drawer runners, under or behind kitchen appliances, behind clocks or hanging picture frames, in vents, in garages and in attics. Suggested -or- Most Important -or- Typical Outdoor Locations: Around doorways, windows, faucets and pipes, vents and air conditioners. Tip: Many small placements are better than a few large ones for faster control.
  - or-
  - 1. To apply gel: Remove the cap on the nozzle, touch the tip to surface to be treated, and depress the plunger. Bait can be applied as spots or as a bead in cracks and crevices. Recap the dispenser after treatment is completed.
  - or-
  - 4. To apply gel: Remove the cap from the nozzle, touch the nozzle tip to surface to be treated and depress the plunger. Recap the dispenser after treatment is complete.
  - or-
  - 1. To apply gel: Remove cap from tip, touch tip to surface and depress plunger. Gel can be applied as spots or in a line along cracks or crevices. Recap tube after use.
2. Apply gel in dime-sized spots or in thin lines about 3 inches long, (approximately once every two feet): Remove cap, touch nozzle tip to surface, and depress plunger. (Repeat approximately every two feet.) Note: If you have recently sprayed (with other insecticides), remove the dead roaches and thoroughly clean the area before applying gel.
  - Tip: For best results, use the entire tube at one time.
  - or-
  - 2. Remove tip, push down plunger, and apply gel in dime-sized spots or in thin lines about 3 inches long, (approximately once every two feet).
  - Tip: For best results, use the entire tube at one time.
  - or-
  - 2. Do not apply gel to areas which have been recently sprayed with insecticide, and do not spray insecticide over gel as this may cause the bait to become repellent.
  - or-
  - 2. For best results, make -or- place many spots or dabs of gel near areas of roach traffic and suspected nesting areas. Gel can be placed in cracks, crevices, corners and any out of the way place in the house, such as under and behind kitchen appliances, along baseboards, under sinks, in pantry, around pipes and water heater and in the garage and attic. Numerous small placements will provide faster control than fewer large spots. For thorough control, use entire tube at the same time.
3. Inspect placements and reapply as needed: The gel will remain attractive to roaches and keep working for up to 3 months. Inspect gel placements after 1 month and reapply if you can no longer see the gel. Reapply after 3 months. Clean up remaining gel with a damp cloth and throw it away.
  - or-
  - 3. The bait will adhere to non-greasy or non-dusty surfaces and will remain palatable and palatable to cockroaches as long as it is visibly present.
  - or-
  - 3. The gel will remain attractive to roaches and keep working for 3 months. Inspect gel after one month and reapply if it is no longer visible. Refresh with a new application after 3 months. Gel cleans up with a damp paper towel.



7/7

Combat Roach Gel  
EPA Reg. No. 64240-XX

### This is how **COMBAT ROACH GEL** works:

- 1** Dispense -or- Apply gel near observed -or- suspected roach nesting areas.
- 2** Roaches eat the gel and die in the nest.
- 3** Other roaches eat them and die, creating The Domino Effect™ (which eliminates roaches and the eggs they carry).



Discard towel after use.

4. A visual inspection of bait placements is recommended at one month after the initial treatment. Reapply when bait is no longer visibly present, according to the remaining level of infestation.

-or-

4. Do not use sprays or foggers around gel since they can contaminate the gel and reduce effectiveness. Do not apply gel to areas that are routinely washed, such as counter tops, as gel will be removed or diluted and spread onto the surface.

For indoor use: Do not place bait in locations that are routinely -or- frequently washed, as bait will be removed by washing. Do not treat food preparation surfaces. Do not use this product in or on electrical equipment where a possibility of shock hazard exists.

For outdoor use: Place gel in areas where roaches may nest or breed near your house or garage. Apply gel to potential places where roaches may enter your home, such as eaves, sills, and expansion joints. Apply gel in protected areas whenever possible. Extreme heat or cold, direct sunlight and water may reduce (the residual - delete) effectiveness.

You will notice fewer roaches within a week

-or-

Pest population reduction will be apparent within a week or less.

*Optional. Additional Text for Directions for Use:*

Apply gel in 1 - 4 dime-sized (1/4 - 1/2 g) spots or a 3" - 12" line -or- bead -or- strip per square yard.

Keep exposed -or- applied gel away from open food and food contact surfaces.

Gel placements should be at or near observed roach gathering areas -or- harborages or aggregation areas, such as corners, areas of movement or cracks and crevices.

Numerous smaller placements will provide faster control than few larger spots, especially for German cockroach control.

Combat Roach Gel may be used as a spot or crack and crevice treatment for the indoor and outdoor control of cockroaches.

Do not treat food/food preparation surfaces.

**Tips for Best Results:**

- Do not spray or smoke around gel bait
- Use many small placements, not a few large ones
- Use the entire tube at the same time
- Clean greasy or dirty surfaces before placement
- In more open areas, such as walls and floors, inside cabinets, and near food, also use Combat SuperBait Roach Baits for maximum roach control

The lower application rate -or- level should be used for low to moderate infestations or retreatments and the higher rate -or- level for more severe infestations or where the population occurs in inaccessible areas, such as in walls.

End Optional Text

© 1996 COMBAT Insect Control Systems  
 1221 Broadway, Oakland, CA 94612  
 EPA Reg. No. 64240-  
 EPA Est. No.  
 U.S. PATENT NOS. 4,163,102; 4,213,988;  
 4,191,768; 4,812,309

