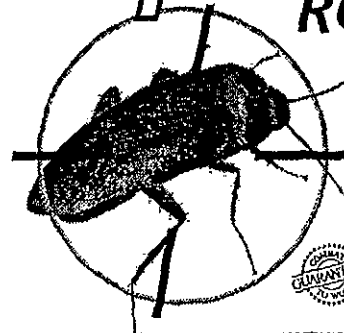


**COMBAT**  
ROACH KILLING  
SYSTEM 1

For Small Roaches  
-or-  
For Large Roaches  
WATERBUGS & PALMETTO BUGS

# COMBAT<sup>®</sup>

## ROACH KILLING SYSTEM 1



For Small Roaches  
-or-  
For Large Roaches  
WATERBUGS & PALMETTO BUGS  
KILLS ASIAN ROACHES

**ACCEPTED**  
NOV 25 1997  
Under the Federal Insecticide, Fungicide, and Rodenticide Act as amended, for the pesticide registered under EPA Reg. No. 64240-4

CONTAINS CHILD-RESISTANT BAIT STATIONS

ACTIVE INGREDIENT: Hydramethylnon [Tetrahydro-5,5-dimethyl-2(1H)-pyrimidinone, (3-(4-(trifluoromethyl)phenyl)-1-(2-(4-(trifluoromethyl)phenyl)ethenyl)-2-propenylidene)hydrazone] ..... 1.0%  
INERT INGREDIENTS: ..... 99.0%

**CAUTION:** DO NOT ALLOW CHILDREN OR PETS TO PLAY WITH THE BAIT STATIONS.

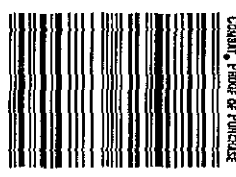
- for large roaches:*
- Controls your roach problem for 3 months.
  - Kills roaches resistant to pyrethroids and organophosphates.
  - A significant reduction in roaches will be apparent within 2 weeks.
  - Guaranteed to work or your money back.
  - Easy-to-use; nothing to activate. No vapors or fumes.
  - Contains a totally unique insecticide ingredient to kill roaches.
  - Kills roaches faster than before.
  - Faster acting formula.

- for small roaches:*
- This product offers -or- provides maximum roach control.
  - This product offers -or- provides maximum egg control.
  - This product causes pregnant -or- egg-bearing roaches to lose their eggs, and prevents -or- inhibits production of new eggs in the population.
  - Controls roaches two ways, by killing adults and preventing reproduction in others.
  - This product attacks -or- disrupts the reproductive system -or- cycle of roaches.
  - Depending on the amount of poison ingested, this product works by either killing or sterilizing the roaches.
  - Kills roaches and the eggs they carry 24 hours a day, 7 days a week.
  - Kills roaches and the eggs they carry while you sleep.
  - Kills roaches and eggs while you sleep.
  - Kills roaches and eggs 24 hours a day, 7 days a week.
  - Destroys -or- kills the egg machine
  - Kills roaches and the eggs they carry for 3 months.

For Small Roaches  
-or-  
For Large Roaches  
WATERBUGS & PALMETTO BUGS

**COMBAT**  
ROACH KILLING  
SYSTEM 1

TOTAL NET WT \_\_\_\_\_



EPA Reg. No. 64240-4  
EPA Est. No. 5813-MS-01  
U.S. Patent Nos. 4,163,102 RE 29,358;  
4,353,907; 4,087,525; 4,213,988;  
DES 278,842; 4,563,836 and other patents pending.



[The paperboard in this] (C) carton (contains) (is made from) \_\_\_\_\_ % recycled fiber (minimum \_\_\_\_\_ % post-consumer content).

© 1995 Combat Insect Control Systems  
1221 Broadway  
Oakland, CA 94612  
MADE IN U.S.A.

R-08359-7

PM 3

64240-4

11/25/97

1/3



For Small Roaches  
-or-  
For Large Roaches  
WATERBUGS & PALMETTO BUGS

# COMBAT® ROACH KILLING SYSTEM 1

## COMBAT® ROACH KILLING SYSTEM 1



For Small Roaches  
-or-  
For Large Roaches  
WATERBUGS & PALMETTO BUGS

**GUARANTEED TO WORK or your money back!**

- COMBAT® BAIT STATIONS CONTAIN A TOTALLY UNIQUE INSECTICIDE INGREDIENT TO KILL ROACHES.
- LABORATORY AND HOME USE TESTS PROVE COMBAT® PROVIDES 3 MONTHS OF EFFECTIVE ROACH CONTROL.
- EASY TO USE-NOTHING TO ACTIVATE
- NO VAPOR, FUMES OR ODOR
- CHILD-RESISTANT



For more information, call the Combat® Lab Information Helpline at 1-800-426-6228. -or- [For questions or comments, please c] [C]all the Combat® Labs [Information] Helpline at 1-800-426-6228 [for more information].

### THIS IS HOW COMBAT® ROACH BAIT STATIONS WORK: -or- THIS IS HOW COMBAT STATIONS WORK:

- 1** Roaches enter the bait station and eat the bait. -or- Roaches enter the bait station.
- 2** Roaches return to their nest and die. -or- Roaches leave the bait station after eating bait inside.
- 3** Other roaches eat them and die, creating a chain reaction. -or- Behind your walls, roaches share bait with more -or other roaches who also die.



### DIRECTIONS FOR USE

IT IS A VIOLATION OF FEDERAL LAW TO USE THIS PRODUCT IN A MANNER INCONSISTENT WITH ITS LABELING.

1. Open pouch and separate the bait stations from plastic frame. Do not remove or puncture the label on bait station.
2. For best results, use all 8 (or 12) bait stations at one time.
3. Place at least 6 (or 10) bait stations in the kitchen and 1 (or 2) in each bathroom (food storage and water sources are the most common roach areas). Specific placement areas include under appliances and sinks, on floor along baseboards, near pet food storage and inside cabinets and drawers.
4. Place baits wherever you see small -or- large roaches; severe roach problems may require 2 boxes or more. The more bait stations placed out, the more roaches find the bait. This means faster and more effective control of your small -or- large roach problem.
5. Bait stations work best when touching walls or corners. Use enclosed stickers when placing them upside down. It is not necessary to use stickers on all baits.
6. Replace all \_\_\_ bait stations every 3 months, or sooner if they return, because roaches have probably eaten all of the bait.

Do not use sprays or foggers around bait stations: they can contaminate bait stations and reduce effectiveness. Bait stations work best on horizontal surfaces touching corners and next to walls. Use enclosed stickers for vertical surfaces.

#### STORAGE AND DISPOSAL

STORAGE: Store in cool, dry area.  
DISPOSAL: Wrap used bait stations and put in trash.

### PLACEMENT OF COMBAT® BAIT STATIONS

The kitchen, bathroom and other points of entry (garage, basement, attic, doors, windows) are the most important locations.



- or -

The kitchen and bathrooms are the most important locations, but use COMBAT® bait stations wherever roaches have been found (laundry room, garage, bedrooms, attic, living room).



Normal infestation requires 1 box ( \_\_\_ bait stations).  
Heavy infestation may require 2 boxes (or more) ( \_\_\_ bait stations).



### FOR LARGE ROACHES, WATERBUGS & PALMETTO BUGS:

This product is specially designed for large roaches, waterbugs & palmetto bugs. Select the right COMBAT® Roach Killing System 1 for your roach problem by using the pictures below to identify which type of pest you have:



**Large, 1" to 1-1/2" Cockroach**  
Habits: Primarily live and breed outdoors and enter homes in search of food. For effective control, bait stations should be put in places where roaches can enter your home.



**Small, 1/2" Cockroach**  
Habits: Primarily live and breed in moist areas like kitchens and bathrooms. For effective control, bait stations should be placed wherever roaches have been seen in your home.

If you have seen both types of cockroach in your home, it is strongly suggested that you purchase both sizes of COMBAT® Roach Killing System 1 for effective roach control.

2/3

