

SEP 23 1993

300.540654
173

Mr. Bill McCormick
The Clorox Company
P.O. Box 493
Pleasanton, CA 94566-0803

Dear Mr. McCormick:

Subject: Combat Roach Killing System 1
✓EPA Registration No. 64240-4
Combat Ant Killing System
EPA Registration No. 64240-3
Combat Roach Killing System
EPA Registration No. 64240-2
Your Submissions Dated May 3, 1993 and May 7, 1993

The labeling referred to above, submitted in connection with registration under the Federal Insecticide, Fungicide, and Rodenticide Act, as amended, is acceptable, provided that you make the labeling changes listed below before you release the product:

EPA Registration No. 64240-2:

1. The claims preceded with the word "New" are allowed to be incorporated on new labeling produced for period not to exceed six months following approval.
2. "Tray" should be replaced with "disc" wherever it appears on the labeling.
3. We agree that the new formula dated October 14, 1991 replaces all previous formulas associated with this product. Alternate formulas are not permitted under the same registration number if new separate claims are associated with the new formula.

EPA Registration No. 64240-3:

1. We agree that the new formula dated February 12, 1992 replaces all previous formulas associated with this product. Alternate formulas are not permitted under the same registration number if new separate claims are associated with the new formula.

CONCURRENCES

SYMBOL							
SURNAME	Belmont						
DATE	9-23-93						

EPA Registration No. 64240-4:

1. Delete the phrase ". . even next to food or where you wouldn't dare spray" under revised copy M.
2. Your product name change to Combat Roach Killing System 1 is acceptable.

Submit five copies of your final printed labeling before you release the product for shipment. Stamped copies of the labeling are enclosed for your records.

Sincerely,

George T. LaRocca
Product Manager 13
Insecticide-Rodenticide Branch
Registration Division (H7505C)

COPY A

CLUB ITEM # _____ INSTITUTIONAL SIZE
- or -
ECONOMY PACK

COPY B

KILLS ASIAN ROACHES

COPY C

And The Eggs They Carry

COPY D

CONTAINS [] CHILD-RESISTANT DISCS [8, 12, 24 or 36]

COPY E

TOTAL NET WT [] OZ [1.27, 0.7, 1.4 or 2.1]

COPY F

1.0 %
99.0 %

COPY G

Disc

COPY H

provides three months of effective control.

COPY I

(ILLUSTRATION) Large 1 - 1 1/2" Cockroach
Habits: Primarily live and
breed outdoors and enter
homes in search of food.
For effective control, disc
should be put in places where
roaches can enter your home.

(ILLUSTRATION) Small 1/2" Cockroach
Habits: Primarily live and
breed in moist areas like
kitchens and bathrooms. For
effective control, disc
should be placed wherever
roaches have been seen.

COPY J

(ILLUSTRATION)

- 1 ROACHES enter disc
- 2 ROACHES leave disc after eating bait inside
- 3 Behind your walls, ROACHES transfer the bait to more roaches who also die

ACCEPTED
with COMMENTS
in EPA Letter Dated

SEP 23 1993

Under the Federal Insecticide,
Fungicide, and Rodenticide Act
as amended, for the pesticide
registered under EPA Reg. No.

64240-4

COPY K

- THREE MONTHS OF EFFECTIVE CONTROL
- EASY TO USE-NOTHING TO ACTIVATE
- NO VAPOR, FUMES OR ODOR
- CHILD-RESISTANT

COPY L

PLACEMENT OF COMBAT BAIT DISC

The kitchen, bathroom and other points of entry (garage, basement, attic, doors, windows, laundry room, bedrooms, and living room) are the most important locations.

(Illustration)
KITCHEN

- or -

The kitchen and bathrooms are the most important locations, but use COMBAT bait disc wherever roaches have been found (laundry room, garage, bedrooms, attic, living room).

(Illustration)
KITCHEN

For normal infestations use 1 box ([] disc).

Heavy infestation may require 2 boxes ([] disc).

(Illustration)
BATHROOM

[8 & 16 respectively for larger size, 12 & 24 for smaller sizes]

COPY M

1. Break COMBAT discs apart from frame. Use [all 8] disc at the same time for thorough control.
- or - [at least 12]
2. Place disc wherever roaches are seen - near doors, windows and floor drains (refer to diagram for other placement locations).

- or -

COMBAT bait discs can be placed anywhere you've seen roaches, even next to food or where you wouldn't dare spray. Use at least 10 discs in the kitchen and 2 in each bathroom (under refrigerator and appliances, inside cabinets and drawers). Refer to diagram for specific placement locations.

- 2cont Do not use sprays or foggers around baits: they can contaminate disc and reduce effectiveness. Baits work best on horizontal surfaces touching corners and next to walls. Use enclosed stickers for vertical surfaces.

COPY M (continued)

3. Roaches will begin eating the bait immediately, and you should expect to see fewer roaches within two weeks.
4. Replace all discs after 3 months of use, sooner if infestation is heavy. Use enclosed replacement reminder.

COPY N

STORAGE AND DISPOSAL

STORAGE: Store in cool, dry area.

DISPOSAL: Wrap used discs and put in trash.

GUARANTEED TO WORK OR YOUR MONEY BACK!

Call the **COMBAT** Roach Expert Hotline 1-800-426-6228 for more information.

1993 Distributed by
Combat Insect Control Systems
1221 Broadway
Oakland, CA 94612
MADE IN U.S.A.
EPA Reg. No. 64240-4
EPA Est. No. 5813-MS-01
U.S. Patent Nos. 4,163,102 RE 29,358;4,
353,907; 4,087,525; 4,213,988; DES 278,
842; 4,563,836 and other patents pending.

COPY O

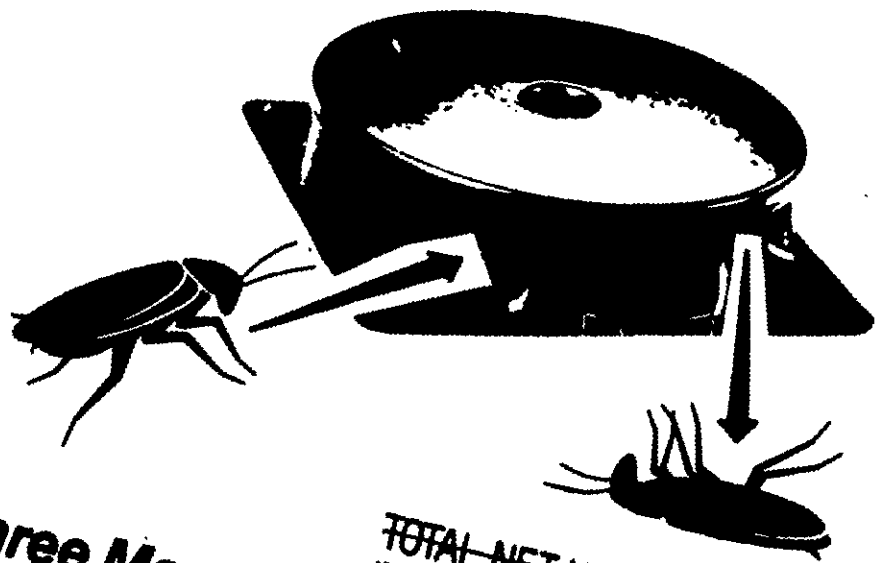
CAUTION

NOTE: Since we are requesting a name change. "Combat Roach Control System Formula II" will be changed to "Combat Roach Killing System I" wherever the complete name appears.

COMBAT

GUARANTEED TO WORK
OR MONEY BACK - SEE BACK PAGE

Roach Control System Formula II
For Large Roaches, Waterbugs and Palmetto bugs



Kills Roaches For Three Months
Contains 8 Child Resistant Bait Trays

TOTAL NET WT. 2.11 OZ. e

ACTIVE INGREDIENT: hydramethylnon (tetrahydro-5, 5-dimethyl-2H-1, 2, 4-triazol-3-ylidene)-1, 2, 4-triazole-3, 5-dithiolane-2-thione
INERT INGREDIENTS

CAUTION: DO NOT ALLOW CHILDREN OR PETS TO PLAY WITH THE BAIT TRAYS

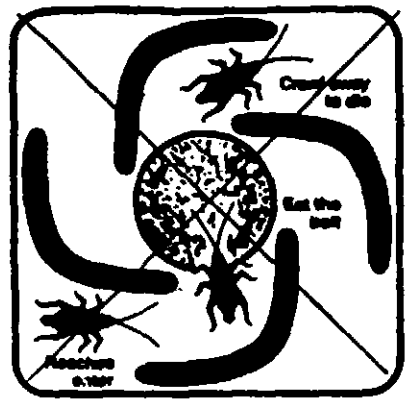
798
4

COMBAT Roach Control System

Formula II

COMBAT® bait trays contain a totally unique insecticide ingredient to kill roaches. Laboratory and home use tests prove COMBAT gives more long-lasting control than the insecticides in leading sprays and foggers. This product is specially designed for large roaches, waterbugs, and palmetto bugs. Make sure to select the right COMBAT Roach Control System for your roach problem by using the pictures below to identify which type of cockroach pest you have. If you have seen both types of cockroach in your home it is strongly suggested you purchase both sizes of COMBAT Roach Control Systems for effective roach control.

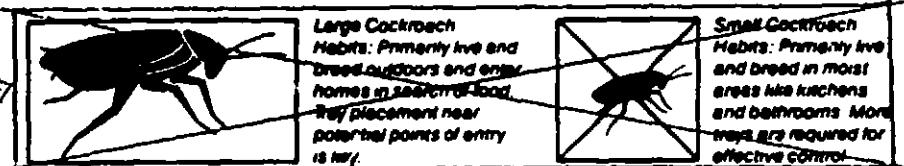
H →



← J

Here's how COMBAT works.

I →



Large Cockroach
Habits: Primarily live and breed outdoors and enter homes in search of food. Tray placement near potential points of entry is key.

Small Cockroach
Habits: Primarily live and breed in moist areas like kitchens and bedrooms. More trays are required for effective control.

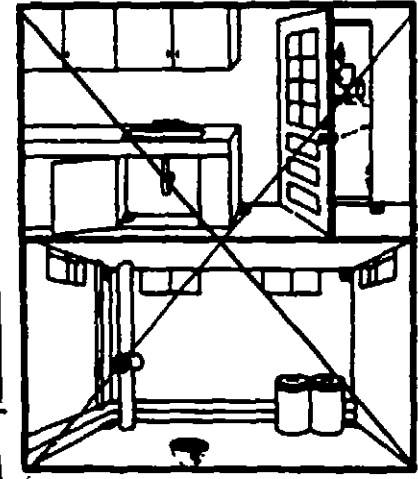
K →

DIRECTIONS FOR USE:

It is a violation of Federal Law to use this product in a manner inconsistent with its labeling. For effective roach control, you must use all 8 trays at once:

1. Place all 8 bait trays in areas where you have actually seen roaches. For example, near or in floor drains and other exposed plumbing fixtures, near basement windows and doors, and where food is prepared and stored.
2. Use the entire contents of this carton at once. For best results, place next to walls and flush in corners, and at a coverage rate of 2 to 3 per 100 sq. ft.
3. If applying COMBAT to vertical surfaces, use enclosed stickers by removing paper backing from both sides. Stickers are not needed on all trays.
4. Roaches will begin eating the bait immediately and you should expect to see fewer roaches within two weeks.
5. Replace all trays every 3 months for effective control of large roaches. Be sure to use the 3 month replacement reminder enclosed.

M →

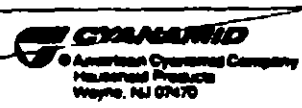


← L

If you have any questions or comments about COMBAT, please call us toll free 1-800-4-COMBAT (Monday through Friday, 9:00 a.m. to 4:00 p.m. Eastern time).

DISPOSAL: Wrap containers and put in trash can.
EFFECTIVENESS GUARANTEE: If COMBAT does not provide roach control, return all 8 bait trays for full refund to Consumer Affairs, American Cyanamid Company, Wayne, New Jersey 07470

N →



EPA Reg. No. 1730 EPA Est. No. 1730-MS-01
U.S. Patent Nos. 4,165,285; 4,165,286; 4,165,287
4,165,288; 4,165,289; 4,165,290; 4,165,291 and other
patents pending

898
Y

**COMBAT®
ROACH CONTROL BAIT TRAYS**

THIS SIDE DOWN: This side should be placed against surface. (Note: Do not remove or puncture this label.)

ACTIVE INGREDIENT: Hydramethylinon (tetrahydro-5, 5-dimethyl-2 (1H)-pyrimidinone (3-[4-(4-fluoromethyl)phenyl]-1-(2-[4-fluoromethyl)phenyl]ethenyl)-2-propenylidene)hydrazone

INERT INGREDIENTS

DO NOT ALLOW CHILDREN OR PETS TO PLAY WITH THE BAIT TRAY

For questions or comments about COMBAT, call toll free 1-800-4-CYANBAT
© American Cyanamid Co. NET WT 0.284 OZ. (7.9g)
Household Products
Wayne, NJ 07470
EPA Reg. No. 1730 EPA Est. No. 1730-MS-01

SEE OUTER CARTON FOR COMPLETE DIRECTIONS AND PRECAUTIONS.

O →

N →

→