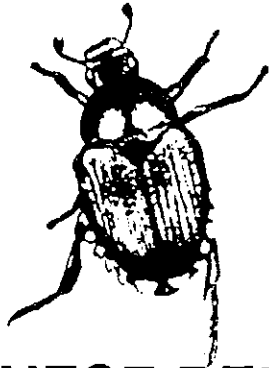
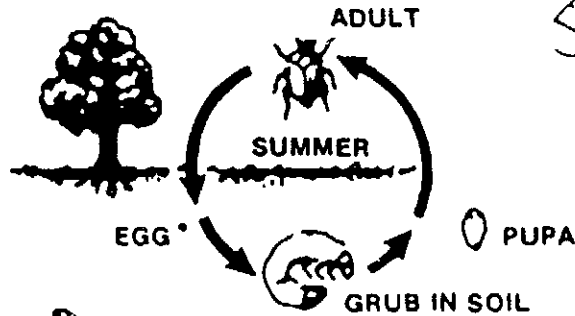


MILKY SPORE POWDER



JAPANESE BEETLE CONTROL

1,000 ADULT BEETLE
50,000 GRUBS EACH



5045



JAPANESE BEETLE LARVAE LIVE IN THE SOIL FEEDING ON TENDER GRASS ROOTS.

DIRECTIONS FOR USE:

It is in violation of federal law to use this product in a manner inconsistent with its labelling.

1. Apply one level measure teaspoon of MILKY SPORE powder on top of grass in spots every four feet in rows four feet apart.
2. Use one pound on 4,000 sq. ft. of turf and ten pounds per acre.
3. Treat your lawn any season of the year when the ground is not frozen.
4. Water your lawn at least 15 minutes after application.

Areas between spots will be inoculated naturally. Highly efficient control cannot be expected until the entire area is inoculated. Do not use on pasture land.

PRECAUTIONARY STATEMENTS:

Hazard To Humans

Caution: Avoid inhalation of powder or contact with eyes or open wounds.

Environmental Hazards

Keep out of lakes, ponds, or streams. Do not contaminate water by cleaning of equipment or disposal of wastes.

STORAGE & DISPOSAL:

Store this product in a dry area out of direct sunlight. Keep lid tightly closed to protect product from moisture. Do not reuse empty container. Dispose in trash collection.

READY TO USE

KILLS
JAPANESE BEETLE GRUBS

DO NOT USE ON PASTURE LAND.

For use in lawns, gardens, flower beds, and around the home.

KEEP OUT OF REACH OF CHILDREN

CAUTION

See additional precautionary statements on back.

ACTIVE INGREDIENTS:	
Spores of <i>Bacillus popilliae</i>	0.02%
INERT INGREDIENTS:	
Diluents	99.98%
TOTAL	100.00%

ACCEPTED
AUG 16 1995

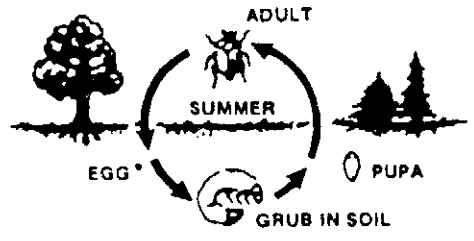
NET WT. 50 lb (22.68 kg)
Under the Federal Insecticide, Fungicide, and Rodenticide Act, as amended, for the pesticide registered under Reg. No. 63191-1

REUTER BIOLOGICALS
P.O. BOX A, HOT SPRINGS, VA 24445

EPA Est no. 063191-VA-1

EPA Reg no 063191-1

1,000 ADULT BEETLES LAY
50,000 GRUBS EACH YEAR.



DO NOT USE ON PASTURE LAND.
For use in lawns, gardens, flower
beds, and around the home.

**KEEP OUT OF REACH OF CHILDREN
CAUTION**

See additional precautionary statements on back.

ACTIVE INGREDIENTS:	
Spores of <i>Bacillus popilliae</i>	0.02%
INERT INGREDIENTS:	
Diluents	99.98%
TOTAL	100.00%

NET WT. 8 oz.
(227 g)

REUTER BIOLOGICALS
P.O. BOX A, HOT SPRINGS, VA 24445

**JAPANESE BEETLE LARVAE LIVE IN THE
SOIL FEEDING ON TENDER GRASS ROOTS.**

DIRECTIONS FOR USE:

It is in violation of federal law to use this product in a manner inconsistent with its labelling.

1. Apply one level measure teaspoon of MILKY SPORE powder on top of grass in spots every four feet in rows four feet apart.
2. Use one pound on 4,000 sq. ft. of turf and ten pounds per acre.
3. Treat your lawn any season of the year when the ground is not frozen.
4. Water your lawn at least 15 minutes after application.

Areas between spots will be inoculated naturally. Highly efficient control cannot be expected until the entire area is inoculated. Do not use on pasture land.

PRECAUTIONARY STATEMENTS:

Hazard To Humans

Caution: Avoid inhalation of powder or contact with eyes or open wounds.

Environmental Hazards

Keep out of lakes, ponds, or streams. Do not contaminate water by cleaning of equipment or disposal of wastes.

STORAGE & DISPOSAL:

Store this product in a dry area out of direct sunlight. Keep lid tightly closed to protect product from moisture. Do not reuse empty container. Dispose in trash collection.

EPA Est. no 063191-VA-1

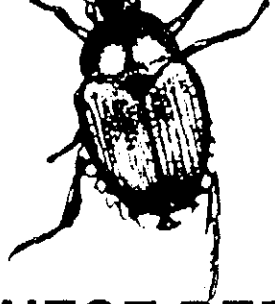
EPA Reg no 063191-1

ACCEPTED
AUG 16 1995
Under the Federal Insecticide, Fungicide, and
Rodenticide Act, as amended, for the
pesticide registered under
EPA Reg. No. 063191-1

BEST COPY AVAILABLE

Composite

100 LB.



JAPANESE BEETLE CONTROL

READY TO USE

KILLS JAPANESE BEETLE GRUBS

DO NOT USE ON PASTURE LAND.

For use in lawns, gardens, flower beds, and around the home.

KEEP OUT OF REACH OF CHILDREN

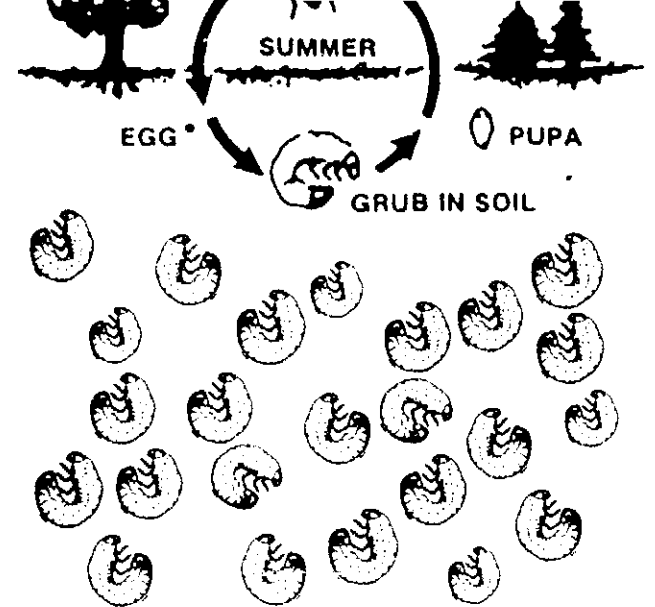
CAUTION

See additional precautionary statements on back.

ACTIVE INGREDIENTS:	
Spores of <i>Bacillus popilliae</i>	0.02%
INERT INGREDIENTS:	
Diluents	99.98%
TOTAL	100.00%

ACCEPTED
AUG 16 1995

NET WT. 100 LB.
REUTER BIOLOGICALS
P.O. BOX A, HOT SPRINGS, VA 24445



JAPANESE BEETLE LARVAE LIVE IN THE SOIL FEEDING ON TENDER GRASS ROOTS.

DIRECTIONS FOR USE:

It is in violation of federal law to use this product in a manner inconsistent with its labelling.

1. Apply one level measure teaspoon of MILKY SPORE powder on top of grass in spots every four feet in rows four feet apart.
2. Use one pound on 4,000 sq. ft. of turf and ten pounds per acre.
3. Treat your lawn any season of the year when the ground is not frozen.
4. Water your lawn at least 15 minutes after application.

Areas between spots will be inoculated naturally. Highly efficient control cannot be expected until the entire area is inoculated. Do not use on pasture land.

PRECAUTIONARY STATEMENTS:

Hazard To Humans

Caution: Avoid inhalation of powder or contact with eyes or open wounds.

Environmental Hazards

Keep out of lakes, ponds, or streams. Do not contaminate water by cleaning of equipment or disposal of wastes.

STORAGE & DISPOSAL:

Store this product in a dry area out of direct sunlight. Keep lid tightly closed to protect product from moisture. Do not reuse empty container. Dispose in trash collection.

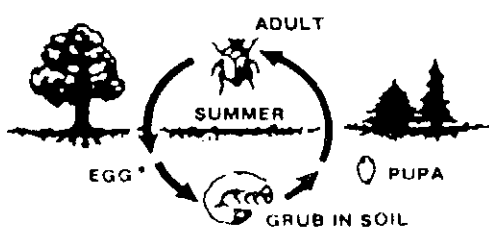
EPA Est no 063191-VA-1

EPA Reg. no. 063191-1

4/24

5.12
2.7

1,000 ADULT BEETLES LAY
50,000 GRUBS EACH YEAR.



DO NOT USE ON PASTURE LAND.
For use in lawns, gardens, flower
beds, and around the home.

KEEP OUT OF REACH OF CHILDREN
CAUTION
See additional precautionary statements on back.

ACTIVE INGREDIENTS:	
Spores of <i>Bacillus popilliae</i>	0.02%
INERT INGREDIENTS:	
Diluents	99.98%
TOTAL	100.00%

NET WT. 2.5 lb.
(1.13 kg)

REUTER BIOLOGICALS
P.O. BOX A, HOT SPRINGS, VA 24445

JAPANESE BEETLE LARVAE LIVE IN THE
SOIL FEEDING ON TENDER GRASS ROOTS.

DIRECTIONS FOR USE:

It is in violation of federal law to use this product in a manner inconsistent with its labelling.

1. Apply one level measure teaspoon of MILKY SPORE powder on top of grass in spots every four feet in rows four feet apart.
2. Use one pound on 4,000 sq. ft. of turf and ten pounds per acre.
3. Treat your lawn any season of the year when the ground is not frozen.
4. Water your lawn at least 15 minutes after application.

Areas between spots will be inoculated naturally. Highly efficient control cannot be expected until the entire area is inoculated. Do not use on pasture land.

PRECAUTIONARY STATEMENTS:

Hazard To Humans

Caution: Avoid inhalation of powder or contact with eyes or open wounds.

Environmental Hazards

Keep out of lakes, ponds, or streams. Do not contaminate water by cleaning of equipment or disposal of wastes.

STORAGE & DISPOSAL:

Store this product in a dry area out of direct sunlight. Keep lid tightly closed to protect product from moisture. Do not reuse empty container. Dispose in trash collection.



EPA Est. no 063191-VA-1
EPA Reg. no 063191-1

ACCEPTED

AUG 16 1995

Under the Federal Insecticide, Fungicide, and Rodenticide Act, as amended, for the pesticide registered under EPA Reg. No. 063191-1

BEST