

**UNITED STATES ENVIRONMENTAL PROTECTION AGENCY**



U.S. ENVIRONMENTAL PROTECTION AGENCY  
Office of Pesticide Programs  
Registration Division (H7505C)  
401 "M" St., S.W.  
Washington, D.C. 20460

EPA Reg. Number:  
  
63191-1

Date of Issuance:  
  
MAY 24 1995

NOTICE OF PESTICIDE:  
 Registration  
 Reregistration

(under FIFRA, as amended)

Term of Issuance:  
Conditional

Name of Pesticide Product:  
Milky Spore Powder

Name and Address of Registrant (include ZIP Code):

Theodore E. Reuter  
Route 220 North POB A  
Hot Springs, VA 24445

**Note:** Changes in labeling differing in substance from that accepted in connection with this registration must be submitted to and accepted by the Registration Division prior to use of the label in commerce. In any correspondence on this product always refer to the above EPA registration number.

On the basis of information furnished by the registrant, the above named pesticide is hereby registered/reregistered under the Federal Insecticide, Fungicide and Rodenticide Act.

Registration is in no way to be construed as an endorsement or recommendation of this product by the Agency. In order to protect health and the environment, the Administrator, on his motion, may at any time suspend or cancel the registration of a pesticide in accordance with the Act. The acceptance of any name in connection with the registration of a product under this Act is not to be construed as giving the registrant a right to exclusive use of the name or to its use if it has been covered by others.

This product is conditionally registered in accordance with FIFRA sec. 3(c)(7)(A) provided that you:

1. Submit and/or cite all data required for registration/reregistration of your product under FIFRA sec. 3(c)(5) when the Agency requires all registrants of similar products to submit such data; and submit acceptable responses required for reregistration of your product under FIFRA section 4.

2. Make the following label changes:

a. Revise the EPA Registration Number to read, "EPA Reg. No. 63191-1".

Signature of Approving Official:

Date:

(See second page for signature)

EPA Form 8570-6

**CONCURRENCES**

SYMBOL							
SURNAME							
DATE							

UNITED STATES ENVIRONMENTAL PROTECTION AGENCY

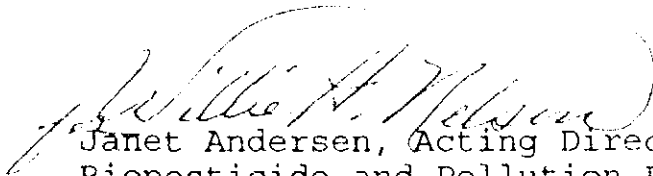
page 2  
EPA Reg. No.

3. At your next printing, or within one calendar year, submit five copies of your final printed labeling with the "precautionary statement corrected to read "See additional precautionary statement" under Precautionary labeling heading.

4. Submit five (5) copies of your revised final printed labeling before you release the product for shipment. Refer to the A-79 Enclosure for a further description of final printed labeling.

If these conditions are not complied with, the registration will be subject to cancellation in accordance with FIFRA sec. 6(e). Your release for shipment of the product constitutes acceptance of these conditions.

A stamped copy of the label is enclosed for your records.

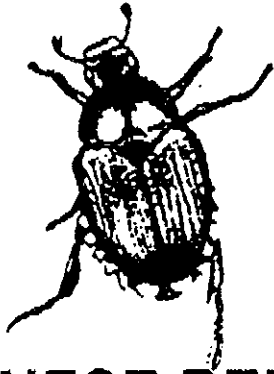


Janet Andersen, Acting Director  
Biopesticide and Pollution Prevention Division

CONCURRENCES

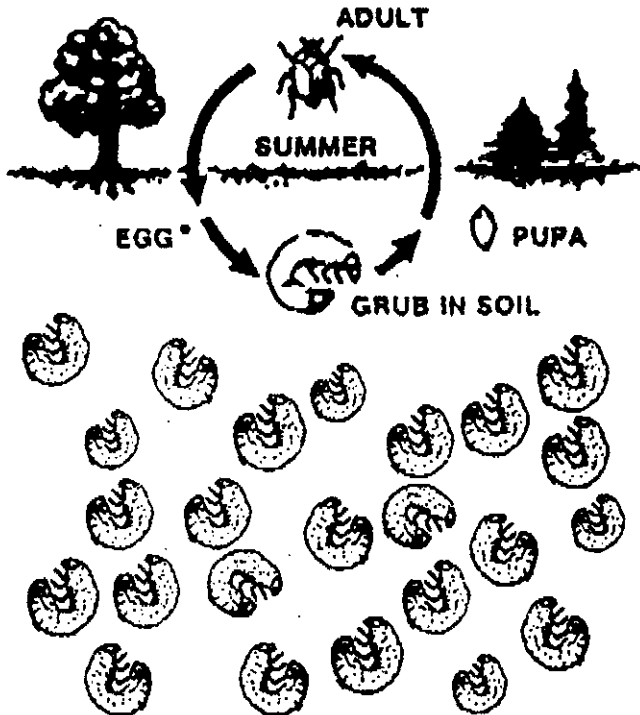
SYMBOL							
SURNAME							
DATE							

# MILKY SPORE POWDER



## JAPANESE BEETLE CONTROL

1,000 ADULT BEETLES LAY 50,000 GRUBS EACH YEAR.



JAPANESE BEETLE LARVAE LIVE IN THE SOIL FEEDING ON TENDER GRASS ROOTS.

### READY TO USE

**KILLS**  
JAPANESE BEETLE GRUBS

DO NOT USE ON PASTURE LAND.

For use in lawns, gardens, flower beds, and around the home.

KEEP OUT OF REACH OF CHILDREN

**CAUTION**

See additional precautionary statements on back.

<b>ACTIVE INGREDIENTS:</b>	
Spores of <i>Bacillus popilliae</i> .....	99.99%
<b>INERT INGREDIENTS:</b>	
Diluents .....	0.01%
<b>TOTAL</b> .....	<b>100.00%</b>

NET WT. 100 lb.  
(45.36 kg)

**REUTER BIOLOGICALS**  
P.O. BOX A, HOT SPRINGS, VA 24445

**DIRECTIONS FOR USE:**

It is in violation of federal law to use this product in a manner inconsistent with its labelling.

1. Apply one level measure teaspoon of MILKY SPORE powder on top of grass in spots every four feet in rows four feet apart.
2. Use one pound on 4,000 sq. ft. of turf and ten pounds per acre.
3. Treat your lawn any season of the year when the ground is not frozen.
4. Water your lawn at least 15 minutes after application.

Areas between spots will be inoculated naturally. Highly efficient control cannot be expected until the entire area is inoculated. Do not use on pasture land.

**PRECAUTIONARY STATEMENTS:**

**Hazard To Humans**

Caution: Avoid inhalation of powder or contact with eyes or open wounds.

**Environmental Hazards**

Keep out of lakes, ponds, or streams. Do not contaminate water by cleaning of equipment or disposal of wastes.

**STORAGE & DISPOSAL:**

Store this product in a dry area out of direct sunlight. Keep lid tightly closed to protect product from moisture. Do not reuse empty container. Dispose in trash collection.

Under the Fungicide, Insecticide, and Rodenticide Act as amended, this pesticide registered under EPA Reg. No. 063191-1

EPA Est. no. 063191-VA-1

EPA Reg. no. 063191-1

**BEST COPY AVAILABLE**

3