

62719-145

6-11-2003

1/31



UNITED STATES ENVIRONMENTAL PROTECTION AGENCY

WASHINGTON, D.C. 20460

JUN 11 2003

OFFICE OF
PREVENTION, PESTICIDES
AND TOXIC SUBSTANCES

Mr. Steve A. McMaster
Regulatory Manager
Dow AgroSciences LLC
9330 Zionsville Road
Indianapolis, IN 46268

Dear Mr. McMaster:

Subject: Gallery® 75 Dry Flowable
Registration No. 62719-145
Application and Letter Dated May 7, 2003, Request To
Amend Registration with Revised Labeling: Update of
First Aid Statements with a Contact Phone Number,
Added Terms and Conditions, Referral Statements to
Warranty Disclaimer, Added a Return Option if User
Finds That Product Is Not Appropriate for Intended
Use, Revised Weed Control List, Revised List of
Ornamental Species and Minor Editing for Clarity

The subject labeling amendments have been reviewed and found acceptable under the Federal Insecticide, Fungicide and Rodenticide Act (FIFRA), as amended; provided that you:

1. Please correct the labeling claim that describes this herbicide as "selective".
2. Submit one (1) copy of the final printed label prior to your shipment under the enclosed revised stamped label.

If these conditions are not complied with, this registration will be subject to cancellation in accordance with FIFRA, section 6(6). Your release for shipment under this label constitutes acceptance of these conditions. A stamped copy of the label is enclosed for your records.

Sincerely yours,

A handwritten signature in cursive script that reads "Joanne I. Miller".

Joanne I. Miller
Product Manager (23)
Herbicide Branch
Registration Division (7505C)

Enclosure

2/31

[Base Label]

(logo) Dow AgroSciences

Gallery*

75 Dry Flowable

A selective preemergence herbicide for control of certain broadleaf weeds in:

- Established turf
- Landscape ornamentals
- Container grown ornamentals
- Field grown ornamentals
- Ground covers / Perennials
- Non-cropland
- Ornamental bulbs
- Non-bearing fruit and nut trees and non-bearing vineyards
- Christmas tree/Conifer plantations

Active Ingredient:

isoxaben: N-[3-(1-ethyl-1-methylpropyl)-5-isoxazolyl]-2,6-dimethoxybenzamide and isomers 75%

Inert Ingredients 25%

Total 100%

Contains 0.75 pound active ingredient per pound.

U.S. Patent Nos. 5,086,184 and 4,636,243

ACCEPTED
with COMMENTS
In EPA Letter Dated
JUN 11 2003

Under the Federal Insecticide, Fungicide, and Rodenticide Act as amended, for the pesticide registered under EPA Reg. No.

62719-145

Keep Out of Reach of Children

CAUTION PRECAUCION

Si usted no entiende la etiqueta, busque a alguien para que se la explique a usted en detalle. (If you do not understand the label, find someone to explain it to you in detail.)

Precautionary Statements

Hazards to Humans and Domestic Animals

Causes Eye Irritation + Harmful If Inhaled

Avoid ingestion, breathing dust or spray mist, and contact with skin, eyes, or clothing.

Personal Protective Equipment (PPE)

Applicators and other handlers must wear:

- Long-sleeved shirt and long pants
- Shoes plus socks

Follow manufacturer's instructions for cleaning/maintaining PPE. If no such instructions for washables, use detergent and hot water. Keep and wash PPE separately from other laundry.

User Safety Recommendations

Users should:

- Wash hands before eating, drinking, chewing gum, using tobacco or using the toilet.
- Remove clothing immediately if pesticide gets inside. Then wash thoroughly and put on clean clothing.

First Aid

If in eyes: Hold eye open and rinse slowly and gently with water for 15-20 minutes. Remove contact lenses, if present, after the first 5 minutes, then continue rinsing eye. Call a poison control center or doctor for treatment advice.

If swallowed: Call a poison control center or doctor immediately for treatment advice. Have person sip a glass of water if able to swallow. Do not induce vomiting unless told to do so by the poison control center or doctor. Do not give anything by mouth to an unconscious person.

If on skin or clothing: Take off contaminated clothing. Rinse skin immediately with plenty of water for 15-20 minutes. Call a poison control center or doctor for treatment advice.

If inhaled: Move person to fresh air. If person is not breathing, call 911 or an ambulance, then give artificial respiration, preferably by mouth-to-mouth, if possible. Call a poison control center or doctor for further treatment advice.

Have the product container or label with you when calling a poison control center or doctor, or going for treatment. You may also contact 1-800-992-5994 for emergency medical treatment information.

Environmental Hazards

Do not contaminate water when disposing of equipment washwaters. Do not apply directly to water, to areas where surface water is present or to intertidal areas below the mean high water mark. Drift may result in reduced germination or emergence of non-target plants adjacent to treated area.

Agricultural Use Requirements

Use this product only in accordance with its labeling and with the Worker Protection Standard, 40 CFR part 170. Refer to the label booklet under "Agricultural Use Requirements" in the Directions for Use section for information about this standard.

Refer to label booklet for Directions for Use including Storage and Disposal.

Notice: Read the entire label. Use only according to label directions. **Before using this product, read Warranty Disclaimer, Inherent Risks of Use and Limitation of Remedies at end of label booklet. If terms are unacceptable, return at once unopened.**

In case of emergency endangering health or the environment involving this product, call 1-800-992-5994. If you wish to obtain additional product information, visit our web site at www.dowagro.com.

Agricultural Chemical: Do not ship or store with food, feeds, drugs or clothing.

EPA Reg. No. 62719-145

EPA Est. _____

*Trademark of Dow AgroSciences LLC
Dow AgroSciences LLC Indianapolis, IN 46268 U.S.A.

Specialty Herbicide

Net Weight __ lb

4/31

(Label booklet cover)

(logo) **Dow AgroSciences**

Gallery*

75 Dry Flowable

A selective preemergence herbicide for control of certain broadleaf weeds in:

- **Established turf**
- **Landscape ornamentals**
- **Container grown ornamentals**
- **Field grown ornamentals**
- **Ground covers / Perennials**
- **Non-cropland**
- **Ornamental bulbs**
- **Non-bearing fruit and nut trees and non-bearing vineyards**
- **Christmas tree/Conifer plantations**

Active Ingredient:

isoxaben: N-[3-(1-ethyl-1-methylpropyl)-5-isoxazolyl]-2,6-dimethoxybenzamide
and isomers 75%

Inert Ingredients 25%

Total 100%

Contains 0.75 pound active ingredient per pound.

U.S. Patent Nos. 5,086,184 and 4,636,243

Keep Out of Reach of Children

CAUTION PRECAUCION

Si usted no entiende la etiqueta, busque a alguien para que se la explique a usted en detalle. (If you do not understand the label, find someone to explain it to you in detail.)

Agricultural Use Requirements

Use this product only in accordance with its labeling and with the Worker Protection Standard, 40 CFR part 170. Refer to the label booklet under "Agricultural Use Requirements" in the Directions for Use section for information about this standard.

Notice: Read the entire label. Use only according to label directions. **Before using this product, read Warranty Disclaimer, Inherent Risks of Use and Limitation of Remedies at end of label booklet. If terms are unacceptable, return at once unopened.**

Refer to inside of label booklet for additional precautionary information including Personal Protective Equipment (PPE) and User Safety Recommendations, and Directions for Use including Storage and Disposal.

EPA Reg. No. 62719-145

EPA Est. _____

*Trademark of Dow AgroSciences LLC
Dow AgroSciences LLC •Indianapolis, IN 46268 U.S.A.

Specialty Herbicide

Net Weight __ lb

5/31

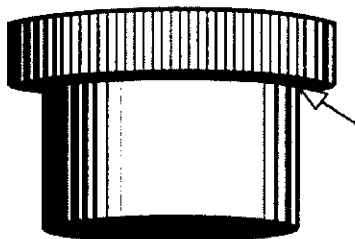
[Page 1 through end)]

Notice: Read the entire label. Use only according to label directions. **Before buying or using this product, read "Warranty Disclaimer" and "Limitation of Remedies" inside label booklet.**

In case of emergency endangering health or the environment involving this product, call 1-800-992-5994. If you wish to obtain additional product information, visit our web site at www.dowagro.com.

Agricultural Chemical: Do not ship or store with food, feeds, drugs or clothing.

NOTICE: The container cap for Gallery* 75 Dry Flowable herbicide may be used to measure the amount of product required to treat small areas. When filled to the level of the inner lip, the cap contains approximately 1/2 ounce which is the amount of Gallery 75 Dry Flowable needed to treat an area of 1,000 square feet at a rate equivalent to 1.33 lb/acre. Please refer to label booklet for complete use directions and precautions.



When filled to this level, container cap contains 1/2 oz (14 grams) of Gallery 75 Dry Flowable.

6/31

[Second Page of Booklet]

Table of Contents	Page
Precautionary Statements	
Hazards to Humans and Domestic Animals	
First Aid	
Environmental Hazards	
Directions for Use	
Storage and Disposal	
General Information	
Application Directions	
Mixing Directions	
Gallery 75 Dry Flowable - Alone	
Gallery 75 Dry Flowable in Tank Mixes	
Weeds Controlled or Suppressed by Gallery 75 Dry Flowable	
Approved Uses:	
Established Turfgrasses	
Special Use Precautions	
Tank Mixing	
Landscape ornamentals, container grown ornamentals, field grown ornamentals , ground covers/perennials and non-bearing trees and vines,	
Special Use Precautions	
Trees	
Ornamental Shrubs	
Ground Covers	
Other Ornamental Plants	
Non-bearing trees and vines	
Ornamental Bulbs	
Shadehouse Areas	
Christmas Tree/Conifer Plantations	
Non-cropland Areas	
Terms and Conditions of Use	
Warranty Disclaimer	
Inherent Risks of Use	
Limitation of Remedies	

Precautionary Statements

Hazards to Humans and Domestic Animals**CAUTION**

Causes Eye Irritation + Harmful If Inhaled

Avoid ingestion, breathing dust or spray mist, and contact with skin, eyes, or clothing.

Personal Protective Equipment (PPE)

Applicators and other handlers must wear:

- Long-sleeved shirt and long pants
- Shoes plus socks

Follow manufacturer's instructions for cleaning/maintaining PPE. If no such instructions for washables, use detergent and hot water. Keep and wash PPE separately from other laundry.

User Safety Recommendations

Users should:

- Wash hands before eating, drinking, chewing gum, using tobacco or using the toilet.
- Remove clothing immediately if pesticide gets inside. Then wash thoroughly and put on clean clothing.

First Aid

If in eyes: Hold eye open and rinse slowly and gently with water for 15-20 minutes. Remove contact lenses, if present, after the first 5 minutes, then continue rinsing eye. Call a poison control center or doctor for treatment advice.

If swallowed: Call a poison control center or doctor immediately for treatment advice. Have person sip a glass of water if able to swallow. Do not induce vomiting unless told to do so by the poison control center or doctor. Do not give anything by mouth to an unconscious person.

If on skin or clothing: Take off contaminated clothing. Rinse skin immediately with plenty of water for 15-20 minutes. Call a poison control center or doctor for treatment advice.

If inhaled: Move person to fresh air. If person is not breathing, call 911 or an ambulance, then give artificial respiration, preferably by mouth-to-mouth, if possible. Call a poison control center or doctor for further treatment advice.

Have the product container or label with you when calling a poison control center or doctor, or going for treatment. You may also contact 1-800-992-5994 for emergency medical treatment information.

Environmental Hazards

Do not contaminate water when disposing of equipment washwaters. Do not apply directly to water, to areas where surface water is present or to intertidal areas below the mean high water mark. Drift may result in reduced germination or emergence of non-target plants adjacent to treated area.

8/31

Directions for Use

It is a violation of Federal law to use this product in a manner inconsistent with its labeling. Read all Directions for Use carefully before applying.

Do not apply this product in a way that will contact workers or other persons, either directly or through drift. Only protected handlers may be in the area during application. For any requirements specific to your state or tribe, consult the agency responsible for pesticide regulation.

Agricultural Use Requirements

Use this product only in accordance with its labeling and with the Worker Protection Standard, 40 CFR part 170. **This Standard contains requirements for the protection of agricultural workers on farms, forests, nurseries, and greenhouses, and handlers of agricultural pesticides.** It contains requirements for training, decontamination, notification, and emergency assistance. It also contains specific instructions and exceptions pertaining to the statements on this label about personal protective equipment (PPE), and restricted-entry interval. The requirements in this box only apply to uses of this product that are covered by the Worker Protection Standard.

Do not enter or allow worker entry into treated areas during the restricted entry interval (REI) of 12 hours.

PPE required for early entry to treated areas that is permitted under the Worker Protection Standard and that involves contact with anything that has been treated, such as plants, soil, or water, is:

- Coveralls
- Waterproof gloves
- Shoes plus socks

Non-Agricultural Use Requirements

The requirements of this box apply to uses of this product that are NOT within the scope of the Worker Protection Standard for agricultural pesticides (40 CFR Part 170). The WPS applies when this product is used to produce agricultural plants on farms, forests, nurseries, or greenhouses.

Entry Restrictions for Non-WPS Uses: When this product is applied to turf and ornamental plantings in landscape settings and non-cropland areas, do not allow entry into treated areas until sprays have dried unless wearing coveralls, waterproof gloves, and shoes plus socks.

Storage and Disposal

Do not contaminate water, food or feed by storage or disposal.

Pesticide Storage: Store in original container. Do not store in direct sunlight. Do not store at temperatures above 120°F. In case of leak or spill, contain material and dispose as waste.

Pesticide Disposal: Wastes resulting from the use of this product may be disposed of on site or at an approved waste disposal facility.

Container Disposal: Dispose of in a sanitary landfill, or incineration, or by burning if allowed by state and local authorities. If burned, stay out of smoke.

General Information

Gallery* 75 Dry Flowable herbicide is a preemergence product for control of certain broadleaf weeds in established turf, landscape ornamentals, container grown ornamentals, field grown ornamentals, ground covers/perennials, ornamental bulbs, non-bearing fruit and nut trees and non-bearing vineyards, Christmas tree/conifer plantations and non-cropland areas. Apply Gallery 75 Dry Flowable in late summer to early fall, in early spring, or anytime prior to germination of target weeds, or immediately after cultivation.

Use Precautions and Restrictions

Gallery 75 Dry Flowable controls weeds germinating from seed. Gallery 75 Dry Flowable does not control established weeds, or weeds growing from stolons, rhizomes, or root pieces. Existing weeds should be controlled by cultivation or with postemergence herbicides. Weed residues, prunings, and trash should be removed or thoroughly mixed into the soil prior to application. Soil in non-turf areas should be in good condition and free of clods at the time of application. Gallery 75 Dry Flowable is stable on the soil surface for up to 21 days, but must be incorporated by moisture to be effective. A single rainfall or sprinkler irrigation of 0.5 inches or more, or flood irrigation after application is necessary to activate Gallery 75 Dry Flowable. If Gallery 75 Dry Flowable is not activated by rainfall or irrigation within 21 days after application, erratic weed control may result. In non-turf areas, if weeds emerge due to lack of rainfall or irrigation, shallow cultivation to a depth of 1 to 2 inches will incorporate the herbicide and destroy existing weeds.

Treatment of Turf or Ornamental Species not listed on the Label for Gallery 75 Dry Flowable

Although this label contains a large number of ornamental species, it is not possible to include all of the ornamental plants that may be encountered in nursery or landscape settings. Users who wish to use Gallery 75 Dry Flowable on a plant species not listed on this label may determine the suitability for such use by treating a small area or small number of plants at a recommended rate. Prior to treatment of larger areas, the treated area/plants should be observed for any sign of herbicidal injury during 30 to 60 days of typical growing conditions. **The user assumes the responsibility for any plant damage or other liability resulting from use of Gallery 75 Dry Flowable on species not recommended on this label.**

In Arizona: The state of Arizona has not approved Gallery 75 Dry Flowable herbicide for use on plants grown for commercial production such as: turf sod farms, Christmas tree plantations, ornamentals and nursery stock grown for resale, and non-bearing fruit and nut trees and non-bearing vineyards.

Chemigation: Do not apply Gallery 75 Dry Flowable through any type of irrigation system.

Application Directions

Apply Gallery 75 Dry Flowable with a properly calibrated low-pressure herbicide sprayer that provides uniform spray distribution. Nozzle screens should be no finer than 50 mesh (50 mesh is finer than 16 mesh). In-line screens and strainers should be no finer than 16 mesh. Apply Gallery 75 Dry Flowable in 10 or more gallons of water carrier per acre. As the spray volume decreases, the importance of accurate calibration and uniform application increases. Take precautions to avoid spray drift when applying Gallery 75 Dry Flowable. Drift may result in reduced germination or emergence of non-target plants adjacent to the treated area. Maintain agitation from mixing through application. Avoid boom overlaps that will increase rates above those recommended. Calibrate application equipment prior to use, according to manufacturer's directions. Check calibration frequently to be sure equipment is working properly and distributing spray uniformly.

Mixing Directions

Gallery 75 Dry Flowable - Alone

Check to be sure spray equipment is clean and not contaminated with other herbicides. Using clean water, fill the tank to 1/2 of the final volume required and start agitation. Slowly add the required quantity of Gallery 75 Dry Flowable to the spray tank, continue agitation and complete filling the tank. Maintain agitation during filling and throughout application. Agitation should be sufficient to create a rippling or rolling action on the liquid surface. Sparger pipe agitation generally provides the best agitation. In-line screens and strainers should be no finer than 16 mesh.

If spraying and agitation is stopped, Gallery 75 Dry Flowable may settle to the bottom of the spray tank. If settling occurs, material must be re-suspended before continuing spray application. Clean the spray tank, lines and screens thoroughly after use.

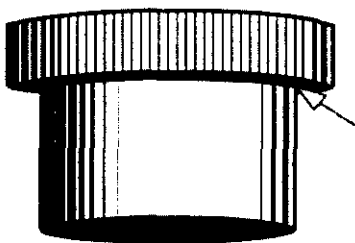
10/31

Application Rate Conversion Table for Gallery 75 Dry Flowable

lb per acre	oz per 1000 sq ft	grams per 1000 sq ft
0.66	0.25	7.0
1.00	0.38	10.5
1.33	0.50	14.0

Repeat applications at 1.0 pound per acre or more of Gallery 75 Dry Flowable should not be made sooner than 60 days after a previous application of Gallery 75 Dry Flowable. Do not apply more than a total of 4.0 pounds per acre of Gallery 75 Dry Flowable within a 12-month period.

Notice: The container cap for Gallery 75 Dry Flowable may be used to measure the amount of product required for small areas. When filled to the level of the inner lip, the cap contains approximately 1/2 ounce, which is the amount of Gallery 75 Dry Flowable needed to treat an area of 1,000 square feet at a rate equivalent to 1.33 lb/acre.



When filled to this level, container cap contains 1/2 oz (14 grams) of Gallery 75 Dry Flowable.

Gallery 75 Dry Flowable in Tank Mix

Gallery 75 Dry Flowable may be applied in tank mix combination with labeled rates of other products provided (1) the tank mix product is labeled for the timing and method of application for the use site to be treated; (2) tank mixing with Gallery 75 Dry Flowable is not prohibited by the label of the tank mix product; and (3) the tank mix combination is compatible as determined by a "jar test" described in the "Tank Mix Compatibility Testing" section below.

Add Gallery 75 Dry Flowable to the spray tank as described above and fill the spray tank to 3/4 of the final volume required. Add other formulations in this order: (1) other dry flowables, (2) wettable powders, (3) aqueous suspensions, (4) flowables, (5) liquids, (6) solutions and emulsifiable or liquid concentrates. Allow two to three minutes between the addition of each product, and agitate continuously until the product(s) are completely dispersed in water. Maintain agitation during filling and through application. If a build-up of materials is observed on the walls of the spray tank, wash the tank with soapy water between fillings, rinse and then continue the spraying operation. Follow label directions for each material added to the tank.

Tank Mix Compatibility Testing: A jar test is recommended prior to tank mixing to ensure compatibility of Gallery 75 Dry Flowable and other pesticides. Use a clear glass quart jar with lid and mix the tank mix ingredients in their relative proportions. Invert the jar containing the mixture several times and observe the mixture for approximately 1/2 hour. If the mixture balls-up, forms flakes, sludges, jels, oily films or layers, or other precipitates, it is not compatible and the tank mix combination should not be used.

Weeds Controlled or Suppressed by Gallery 75 Dry Flowable Herbicide

Weeds controlled when applied at 0.66 lb/acre (0.25 oz or 7 grams/1000 sq ft)

Common Name

aster, slender
bursage, annual

Scientific Name

Aster exilis
Ambrosia acanthicarpa

burweed, lawn	<i>Soliva pterosperma</i>
celery, wild	<i>Apium leptophyllum</i>
chickweed, common	<i>Stellaria media</i>
clover, white	<i>Trifolium repens</i>
cudweed, purple	<i>Gnaphalium purpureum</i>
fiddleneck, coast	<i>Amsinckia intermedia</i>
filaree, redstem	<i>Erodium cicutarium</i>
fleabane, blackleaved	<i>Conyza bonariensis</i>
fleabane, dwarf	<i>Conyza ramosissima</i>
groundcherry, lanceleaf	<i>Physalis lanceifolia</i>
henbit	<i>Lamium amplexicaule</i>
horseweed	<i>Conyza canadensis</i>
knotweed, prostrate	<i>Polygonum aviculare</i>
lambsquarters, common	<i>Chenopodium album</i>
mallow, little	<i>Malva parviflora</i>
mustard, Indian	<i>Brassica juncea</i>
mustard, wild	<i>Sinapis arvensis</i>
nightshade, black	<i>Solanum nigrum</i>
pepperweed, Virginia	<i>Lepidium virginicum</i>
pigweed	<i>Amaranthus spp.</i>
pineappleweed	<i>Matricaria matricarioides</i>
plantain, slender	<i>Plantago elongata</i>
purslane, common	<i>Portulaca oleracea</i>
radish, wild	<i>Raphanus raphanistrum</i>
ragweed, common	<i>Ambrosia artemisiifolia</i>
rocket, London	<i>Sisymbrium irio</i>
rockpurslane, desert	<i>Calandrinia ciliata</i>
shepherdspurse	<i>Capsella bursa-pastoris</i>
sibara	<i>Sibara virginica</i>
smartweed, Pennsylvania	<i>Polygonum pensylvanicum</i>
sowthistle, annual	<i>Sonchus oleraceus</i>
speedwell, purslane	<i>Veronica peregrina</i>
telegraphplant	<i>Heterotheca grandiflora</i>
thistle, Russian	<i>Salsola iberica</i>

In addition to the weeds listed at the 0.66 lb/acre rate, the following weeds will be controlled at 1.0 lb/acre (0.38 oz or 10.5 grams/1000 sq ft)

Common Name	Scientific Name
aster, heath	<i>Aster ericoides</i>
bittercress	<i>Cardamine oligosperma</i>
bittercress, hairy	<i>Cardamine hirsuta</i>
brassbuttons, southern	<i>Cotula australis</i>
carrot, wild	<i>Daucus carota</i>
chamberbitter	<i>Phyllanthus urinaria</i>
chickweed, mouseear	<i>Cerastium vulgatum</i>
dandelion	<i>Taraxacum officinale</i>
eclipta	<i>Eclipta prostrata</i>
galinsoga, hairy	<i>Galinsoga ciliata</i>
geranium, Carolina	<i>Geranium carolinianum</i>
ladysthumb	<i>Polygonum persicaria</i>
lettuce, prickly	<i>Lactuca serriola</i>
mallow, dwarf	<i>Malva rotundifolia</i>
marestail (see horseweed)	
mayweed	<i>Anthemis cotula</i>
morningglory, ivyleaf	<i>Ipomoea hederacea</i>

12/31

mustard, black	<i>Brassica nigra</i>
pennywort	<i>Hydrocotyle</i> spp.
phyllanthus, long-stalk	<i>Phyllanthus tenellus</i>
plantain, bracted	<i>Plantago aristata</i>
plantain, broadleaf	<i>Plantago major</i>
plantain, buckhorn	<i>Plantago lanceolata</i>
pokeweed, common	<i>Phytolacca americana</i>
rockpurslane, redmaids	<i>Calandrinia ciliata</i> var. <i>menziesii</i>
sida, prickly	<i>Sida spinosa</i>
sorrell, red	<i>Rumex acetosella</i>
speedwell, thymeleaf	<i>Veronica serpyllifolia</i>
spurge, hyssop	<i>Euphorbia hyssopifolia</i>
spurge, spotted	<i>Euphorbia maculata</i>
sweetclover, yellow	<i>Melilotus officinalis</i>
tansymustard, green	<i>Descurainia pinnata</i> ssp. <i>brachycarpa</i>
woodsorrel, yellow	<i>Oxalis stricta</i>

In addition to the weeds listed at the 0.66 lb/acre and 1.0 lb/acre rates, the following weeds will be controlled at 1.33 lb/acre (0.5 oz or 14 grams/1000 sq ft)

Common Name	Scientific Name
burclover, California	<i>Medicago polymorpha</i>
dogfennel	<i>Eupatorium capillifolium</i>
eveningprimrose	<i>Oenothera</i> spp.
fescue, rattail	<i>Vulpia myuros</i>
filaree, whitestem	<i>Erodium moschatum</i>
goosefoot, nettleleaf	<i>Chenopodium murale</i>
groundsel, common	<i>Senecio vulgaris</i>
jimsonweed	<i>Datura stramonium</i>
knotweed, silversheath	<i>Polygonum argyrocoleon</i>
kochia	<i>Kochia scoparia</i>
medic, black	<i>Medicago lupulina</i>
mullein, turkey	<i>Eremocarpus setigerus</i>
nettle, burning	<i>Urtica urens</i>
oxtongue, bristly	<i>Picris echioides</i>
pimpernel, scarlet	<i>Anagallis arvensis</i>
sowthistle, spiny	<i>Sonchus asper</i>
spurge, petty	<i>Euphorbia peplus</i>
spurge, prostrate	<i>Euphorbia humistrata</i>
sunflower	<i>Helianthus</i> spp.
swinecress	<i>Coronopus didymus</i>
thistle, musk	<i>Carduus nutans</i>
willoweed, panicle	<i>Epilobium paniculatum</i>
woodsorrel, creeping	<i>Oxalis corniculata</i>

In addition to the weeds controlled, the following weeds will be partially controlled or suppressed at 1.33 lb/acre (0.5 oz or 14 grams/1000 sq ft)

Common Name	Scientific Name
bindweed, field	<i>Convolvulus arvensis</i>
carpetweed	<i>Mollugo verticillata</i>
dock, curly	<i>Rumex crispus</i>
mallow, Venice	<i>Hibiscus trionum</i>
milkweed, honeyvine	<i>Ampelamus albidus</i>
morningglory, tall	<i>Ipomoea purpurea</i>
pusley, Florida	<i>Richardia scabra</i>

13/31

LABELED USES

Established Turfgrasses

Gallery 75 Dry Flowable herbicide is recommended as a preemergence treatment for control of certain broadleaf weeds in established cool season and warm season turfgrasses.

Apply Gallery 75 Dry Flowable anytime prior to germination of target weeds.

Note: Refer to the "General Information" section of this label for General Use Precautions and information on mixing and application, application rates, and weeds controlled prior to using this product.

Use Precautions for Turfgrasses

Apply Gallery 75 Dry Flowable to newly seeded turf (including overseeded turf) **only** after seedlings are established (three leaf stage and tillering) and well rooted. Do not overseed established turf sooner than 60 days following an application of Gallery 75 Dry Flowable.

- Do not apply Gallery 75 Dry Flowable to golf course putting greens or tees.
- Do not apply Gallery 75 Dry Flowable to dichondra.
- Do not apply Gallery 75 Dry Flowable to grass grown for seed.

Tank Mixing

Gallery 75 Dry Flowable may be tank mixed with Surflan* A.S. herbicide and applied as a preemergence treatment to **warm season turfgrass only** to broaden the spectrum of annual grass and broadleaf weed control. Gallery 75 Dry Flowable may also be applied as a separate treatment to supplement the effectiveness of Balan* 2.5G or Team* 2G herbicides in cool and warm season turf. Gallery 75 Dry Flowable may be tank mixed with postemergence broadleaf herbicides registered for use on established turf to control existing broadleaf weeds to provide residual preemergence broadleaf weed control. Applied as directed, Gallery 75 Dry Flowable in tank mix with other products registered for use on turfgrasses will provide control of susceptible weed species listed on the respective labels. When using Gallery 75 Dry Flowable in tank mix combinations with other products, read and follow all applicable use directions, precautions, and limitations on the respective product labels. Refer to instructions for Gallery 75 Dry Flowable in Tank Mix in the Mixing Directions section.

14/31

Gallery 75 Dry Flowable is recommended for use on the following turf species:

Established Cool Season Turf Grasses

Common Name

bentgrass, creeping
bentgrass, colonial
bluegrass, Kentucky
fescue, chewing *Festuca rubra* var. *commutata*
fescue, creeping red
fescue, sheeps *Festuca ovina*
fescue, tall
ryegrass, perennial

Scientific Name

Agrostis stolonifera
Agrostis tenuis
Poa pratensis

Festuca rubra

Festuca arundinaceae
Lolium perenne

Established Warm Season Turf Grasses †

Common Name

bahiagrass

Bermudagrass
buffalograss
centipedegrass
fescue, tall (growing in warm season areas)
St. Augustinegrass
zoysiagrass
zoysiagrass

Scientific Name

Paspalum notatum

Cynodon dactylon
Buchloe dactyloides
Eremochloa ophiuroides
Festuca arundinaceae
Stenotaphrum secundatum
Zoysia japonica
Zoysia tenuifolia

† **Sprigged Warm Season Turfgrass:** Gallery 75 Dry Flowable is recommended post-sprigging, as a preemergence treatment for control of certain broadleaf weeds in warm season turfgrass. Apply any time after sprigging in the following turfgrass species: bermudagrass, bahiagrass, St. Augustinegrass, centipedegrass and buffalograss. Do not apply more than 1.0 lb/acre of Gallery 75 Dry Flowable during the establishment phase for newly sprigged warm season turfgrasses. Do not apply Gallery 75 Dry Flowable to varieties of dwarf-type bermudagrass or to any turfgrass species being sprigged on golf course tees or greens.

Ornamental Plantings

Gallery 75 Dry Flowable is recommended as a preemergence treatment for control of certain broadleaf weeds in landscape ornamentals, container grown ornamentals, field grown ornamentals, ground covers/perennials, and non-bearing fruit and nut trees and non-bearing vineyards.

Apply Gallery 75 Dry Flowable anytime prior to germination of target weeds, or immediately after cultivation.

Note: Refer to the "General Information" section of this label for General Use Precautions and information on mixing and application, application rates, and weeds controlled prior to using this product.

Tank Mixing

Gallery 75 Dry Flowable may be tank mixed with Roundup or other postemergence herbicides registered for control of existing unwanted vegetation in ornamental plantings, and to provide residual preemergence broadleaf weed control. Gallery 75 Dry Flowable may also be tank mixed with Surflan A.S. herbicide and applied preemergence to provide broad-spectrum control of annual grasses and broadleaf weeds in ornamental areas. Applied as directed, tank mixes of Gallery 75 Dry Flowable will provide control of susceptible weed species listed on the respective labels. When using Gallery 75 Dry Flowable in tank mix combination with other products, read and follow all applicable use directions, precautions, and limitations

15/31

on the respective product labels. Refer to instructions for Gallery 75 Dry Flowable in Tank Mix in the Mixing Directions section.

Note: Do not apply sprays containing Roundup over the top of ornamental plants. Extreme care must be exercised to prevent contact of sprays containing Roundup with foliage or stems of turfgrasses, trees, shrubs, or other desirable vegetation since severe damage or death may result. If spraying Roundup in areas adjacent to desirable plants, use a shield to prevent spray from contacting foliage or stems of desirable plants.

Use Precautions for Ornamental Plantings

To avoid possible plant injury, **do not** apply Gallery 75 Dry Flowable to:

- Nursery, forest, or Christmas tree: seedling beds, cutting beds, or transplant beds
- Unrooted liners or cuttings that have been planted in pots for the first time
- Pots less than six inches wide
- Ground covers until they are established and well rooted
- Bedding plants or areas where bedding plants will be planted or transplanted within one year after application

Do not apply Gallery 75 Dry Flowable to newly transplanted ornamentals, nursery stock, ground covers, ornamental bulbs, non-bearing fruit and nut trees or non-bearing vineyards until soil or potting media has been settled by packing and irrigation or rainfall and no cracks are present or plant injury may occur.

Applications of Gallery 75 Dry Flowable over the top of plants with newly forming buds may cause injury. Possible plant injury may be avoided by application as a directed spray to the soil surface beneath ornamental plants.

When planting into a site treated with Gallery 75 Dry Flowable in the past 8 months, use untreated soil as fill around roots when replacing plants or injury may occur.

Note: Injury to certain ornamental plants has been observed following application of Gallery 75 Dry Flowable. To avoid plant injury, Gallery 75 Dry Flowable is not recommended for weed control in the following ornamental plant species:

- Ajuga* spp. (bugle)
- Brassica* spp. (mustard)
- Echinacea purpurea* (purple coneflower)
- Euonymus alatus 'compacta'* (dwarf burning bush)
- Euphorbia* spp. (spurge)
- Hydrangea* spp. (hydrangea)
- Iberis* spp. (candytuft)
- Juniperus horizontalis 'Prince of Wales'* (Prince of Wales Juniper)
- Melaleuca quinquenervia* (cajeput tree)
- Rhododendron carolinianum* (Carolina rhododendron)
- Rhododendron catawbiense 'Roseum elegans'* (Roseum elegans rhododendron)
- Sedum* spp. (stonecrop)
- Yucca recurvifolia* (green yucca)

Gallery 75 Dry Flowable may be used in the culture of the following established plant species:
(Note: Limitations on recommended treatment methods)

Trees

**Recommended
Treatment Method:**
C = Container Grown
F = Field Grown

Scientific Name	Common Name	Recommended Treatment Method
<i>Abies balsamea</i>	Fir, balsam	C, F
<i>Abies concolor</i>	Fir, white	F
<i>Abutilon hybridum</i>	Albus-flowering maple	C, F
	Luteus-flowering maple	C, F
	Roseus-flowering maple	C, F
	Tangerine-flowering maple	C, F
	Vesuvius red-flowering maple	F
<i>Acer ginnala</i>	Flame maple	F
<i>Acer rubrum</i>	Red maple	F
	Red sunset maple	F
<i>Acer saccharinum</i>	Silver maple	C, F
<i>Alsophila australis</i>	Australian tree fern	C, F
<i>Archontophoenix cunninghamiana</i>	King palm	C, F
<i>Areacastrum romanzoffianum</i>	Queen palm	C, F
<i>Araucaria heterophylla</i>	Norfolk island pine	C, F
<i>Bauhinia galpinii</i>	Red bauhinia	C, F
<i>Betula nigra</i>	Birch, river	C, F
<i>Betula papyrifera</i>	Paper birch	F
<i>Brachychiton populneus</i>	Bottle tree	C, F
<i>Bucida buceras</i>	Black olive	F
<i>Ceratonia siliqua</i>	Carob	F
<i>Cercis canadensis</i>	Redbud	C, F
<i>Chamaecyparis obtusa</i>	Filicoides-fernspray cypress	F
	Gracilis-slender Hinoki cypress	F
<i>Chamaecyparis pisifera</i>	Sawara-false cypress	F
	Squarrosa-moss cypress	F
<i>Chamaedorea cataractarum</i>	Cat Palm	F
	Palm	C, F
<i>Chamaedorea costaricana</i>	Palm	C, F
<i>Chamaedorea elegans</i>	Parlor palm	C, F
<i>Chamaerops humilis</i>	Mediterranean fan palm	C, F
<i>Cornus florida</i>	Cloud nine dogwood	C, F
	Dogwood, flowering	C, F
<i>Crataegus viridis</i>	Green hawthorn	F
<i>Cryptomeria japonica</i>	Cryptomeria, Japanese	C, F
<i>Cupaniopsis anacardioides</i>	Carrot wood	F
<i>Cupressus glabra</i>	Arizona cypress	F
<i>Cupressocyparis 'Emerald Isle'</i>	Emerald Isle leyland cypress	C, F
<i>Cupressocyparis leylandii</i>	Blue leyland cypress	C, F
<i>Cupressus ariz 'Blue pyramid'</i>	Blue pyramid cypress	C, F
<i>Cupressus semperfirens</i>	Cypress tree	C, F
<i>Cycas revoluta</i>	Sago palm	C, F
<i>Elaeagnus angustifolia</i>	Russian olive	C, F
<i>Elaeagnus x ebbengei 'Gilt edge'</i>	Gilt edge silverberry	C, F
<i>Eucalyptus camaldulensis</i>	Red gum eucalyptus	F
<i>Eucalyptus cinerea</i>	Eucalyptus, mealy	F
	Silver dollar eucalyptus	F
<i>Eucalyptus microtheca</i>	Coolibah tree	C, F

17/31

<i>Eucalyptus sideroxylon</i>	Eucalyptus, red ironbark	F
<i>Fagus sylvatica</i>	European beech	C, F
<i>Ficus benjamina</i>	Ficus	C, F
	Mini ficus	C, F
<i>Fraxinus udhei</i>	Shamel ash	C, F
<i>Ginkgo biloba</i>	Ginkgo (Maidenhair tree)	F
<i>Gleditsia triacanthos</i>	Honey locust	F
	Shademaster honey locust	F
<i>Heteromeles arbutiflora</i>	Toyon	F
<i>Illicium floridanum</i>	Florida anise-tree	C, F
<i>Juniperus virginiana</i>	Redcedar, Eastern	C, F
<i>Leptospermum scoparium</i>	Tea tree	C, F
<i>Liquidambar styraciflua</i>	Sweetgum, American	F
<i>Magnolia grandiflora</i>	Magnolia, Southern	C, F
<i>Magnolia stellata</i>	Royal star magnolia	C, F
<i>Morus alba</i>	White mulberry	F
<i>Musa aluminata</i>	Banana	C, F
<i>Oxydendrum arboreum</i>	Sourwood	C, F
<i>Picea abies</i>	Pendula-weeping Norway spruce	C, F
	Repens-spreading Norway spruce	C, F
	Spruce, Norway	C, F
<i>Picea glauca</i>	Conica-dwarf Alberta spruce	C, F
<i>Picea glauca conica</i>	Conica-dwarf Alberta spruce	F
<i>Picea pungens</i>	Dwarf globe blue spruce	C, F
	Glauca-Colorado blue spruce	C, F
	Hoopsii-Hoop's blue spruce	C, F
	Koster-Koster blue spruce	F
<i>Pinus aristata</i>	Bristlecone pine	F
<i>Pinus canariensis</i>	Canary Island pine	F
<i>Pinus contorta</i>	Shore pine, beach pine	F
<i>Pinus eldarica</i>	Eldarica pine	C, F
<i>Pinus leucodermis</i>	Bosnian pine	C, F
<i>Pinus mugo</i>	Pumilio- shrubby swiss mountain pine	C, F
<i>Pinus nigra</i>	Austrian black pine	C, F
<i>Pinus radiata</i>	Monterey pine	F
<i>Pinus strobus</i>	Eastern white pine	C, F
	white pine	C, F
<i>Pinus sylvestris</i>	Columnar Scotch pine	C, F
	Scotch pine	C, F
<i>Pinus thunbergiana</i>	Japanese black pine	C, F
<i>Platanus occidentalis</i>	American sycamore	F
<i>Platanus racemosa</i>	Califorina sycamore	F
<i>Podocarpus spp.</i>	Podocarpus	F
<i>Populus deltoides</i>	Cottonwood	F
<i>Prosopis chilensis</i>	Chilean mesquite	C, F
<i>Prunus yedoensis</i>	Yoshino flowering cherry	F
<i>Prunus caroliniana</i>	Carolina laurel cherry	C, F
<i>Prunus laurocerasus</i>	English laurel	C, F
<i>Quercus ilicifolia</i>	Bear oak	F
<i>Quercus palustris</i>	Pin oak	F
<i>Quercus phellos</i>	Willow oak	C, F
<i>Quercus rubra</i>	Red oak	C, F
<i>Quercus virginiana</i>	Live oak	C, F
<i>Salix babylonica</i>	Babylon weeping willow	F
	Corkscrew willow	F
<i>Sequoiadendron giganteum</i>	Giant sequoia	F

18/31

<i>Swietenia mahogany</i>	Mahogany	F
<i>Tabebuia caraiba</i>	Yellow tab	F
<i>Trachycarpus fortunei</i>	Windmill palm	C, F
<i>Tsuga canadensis</i>	Eastern hemlock	C, F
<i>Ulmus parvifolia</i>	Chinese elm	F
<i>Washingtonia robusta</i>	Mexican fan palm	F
<i>Zamia furfuracea</i>	Cardboard palm	C, F

Shrubs

Recommended Treatment Method:
C = Container Grown
F = Field Grown

Scientific Name	Common Name	
<i>Abelia grandiflora</i>	Edward Goucher abelia	C, F
	Glossy abelia	C, F
	Sunrise variegated abelia	C, F
<i>Acacia abyssinica</i>	Abyssinica acacia	C, F
<i>Acacia redolens</i>	Acacia, prostrate	C, F
<i>Acacia stenophylla</i>	Shoestring acacia	C, F
<i>Acalypha wilkesiana</i>	Copper leaf	C, F
<i>Acer ginnala</i>	Amur maple	C, F
<i>Acer palmatum</i>	Coral bark Japanese maple	C, F
<i>Acer palmatum</i>	Dwarf Japanese maple	C, F
<i>Agave americana</i>	Century plant	F
<i>Amelanchier alnifolia</i>	Saskatoon serviceberry	C, F
<i>Andromeda polifolia</i>	Bog rosemary	C, F
<i>Anisodonteia hypomandarum</i>	Cape mallow	C, F
<i>Arctostaphylos uva-ursi</i>	Bearberry	C, F
<i>Ardisia japonica</i>	Chirimen marlberry	C, F
<i>Astilbe arendsii</i>	False Spiraea	C, F
<i>Astilbe chinensis</i>	Astilbe/false spirea	C, F
<i>Athyrium nipponicum</i>	Japanese painted fern	C, F
<i>Baccharis pilularis</i>	coyotebush	F
<i>Berberis gladwynensis</i>	William Penn barberry	C, F
<i>Berberis mentorensis</i>	Mentor barberry	C, F
<i>Berberis thunbergii</i>	Aurea-golden Japanese barberry	F
	Crimson pygmy barberry	C, F
	Rose glow barberry	C, F
	Atropurea-redleaf Japanese barberry	F
	Cherry bomb	C, F
<i>Bougainvillea spp.</i>	Barbara Karst	C, F
	California gold	C, F
	Pink pixie	C, F
	Scarlet O'Hara	C, F
	Temple fire	C, F
	Texas dawn	C, F
<i>Buxus microphylla japonica</i>	Boxwood, Japanese	F
<i>Buxus microphylla Koreana</i>	Korean boxwood	F
<i>Buxus sempervirens</i>	Boxwood, common	C, F
<i>Buxus x 'Green velvet'</i>	Green velvet boxwood	C, F
<i>Callistemon citrinus</i>	Bottlebrush, lemon	F
<i>Callistemon viminalis</i>	Weeping bottlebrush	C, F
<i>Calluna vulgaris</i>	Spring torch scotch heather	C, F
<i>Camellia japonica</i>	Camellia	C, F
<i>Caryopteris clandonensis</i>	Blue mist bluebeard	C, F
<i>Caryopteris x clandonen 'Blk night'</i>	Dark knight bluebeard	C, F
<i>Cassia artemisioides</i>	Cassia, feathery	C, F

<i>Cassia, eremophila</i>	Senna	C, F
<i>Ceanothus</i> spp.	Wild lilac	F
<i>Cephalotaxus drupacea</i>	Plum yew	C, F
<i>Cerastium tomentosum</i>	Snow-in-summer	C, F
<i>Ceratostigma plumbaginoides</i>	Dwarf plumbago	C, F
<i>Ceratosigma willmottianum</i>	Chinese plumbago	C, F
<i>Chaenomeles japonica</i>	Orange flowering quince	C, F
<i>Chamaecyparis obtusa</i>	Kosteri cypress	C, F
	Nana-dwarf Hinoki cypress	C, F
	Torulosa cypress	C, F
<i>Chamaecyparis pisifera</i>	baileyi-dogwood	F
	Flaviramea-dogwood	F
	Sawara-false cypress	F
	Squarrosa Minima cypress	C, F
	Filifera-thread cypress	C, F
<i>Chrysalidocarpus lutescens</i>	Areca palm	F
<i>Clethra alnifolia</i>	Summersweet	C, F
<i>Cleyera japonica</i>	Cleyera, Japanese	C, F
<i>Colonema pulchrum</i>	Pink breath of heaven	C, F
<i>Convolvus cneorum</i>	Bush morning glory	C, F
<i>Convolvulus mauritanicus</i>	Ground morningglory	C, F
<i>Cornus alba</i>	Sibirica-Siberian dogwood	C, F
<i>Cornus stolonifera</i>	Baileyi-red-osier dogwood	F
	Flaviramea-yellowtwig dogwood	F
<i>Corylus contorta</i>	Walking stick	C, F
<i>Cotinus coggygria</i>	Royal purple smoke tree	C, F
<i>Cotinus dammeri</i>	Coral beauty smoke tree	C, F
	Eichholz smoke tree	C, F
<i>Cotoneaster adpressus</i>	Praecox-early cotoneaster	C, F
<i>Cotoneaster apiculatus</i>	Cotoneaster, cranberry	C, F
<i>Cotoneaster congestus</i>	Cotoneaster, Pyrenees	C, F
<i>Cotoneaster dammeri</i>	Cotoneaster, bearberry	C, F
<i>Cotoneaster himalayan</i>	Himalayan cotoneaster	C, F
<i>Cotoneaster horizontalis</i>	Cotoneaster, rock	C, F
<i>Cycas revoluta</i>	Sago palm	C, F
<i>Cytisus praecox</i>	Hollandia-warminster broom	C, F
<i>Cytisus scoparius</i>	Lena-Scotch broom	C, F
<i>Cytisus</i> spp.	Holandia-Scotch broom	F
	Allgold warminster broom	C, F
	Lilac time broom	C, F
<i>Dalea greggii</i>	Trailing indigo bush	C, F
<i>Daphne cneorum</i>	Rose daphne	C, F
<i>Daphne odora</i>	Fragrant daphne	C, F
<i>Deutzia crenata</i>	Nakiana-dwarf deutzia	C, F
<i>Deutzia gracilis</i>	Slender gracilis	C, F
<i>Dodonea viscosa</i>	Hopseed bush	F
<i>Enkianthus companulatus</i>	Red-veined enkianthus	C, F
<i>Elaeagnus pungens</i>	Fruitland silver berry	C, F
<i>Erica cinerea</i>	Purple bell heather	C, F
<i>Erica vagans</i>	Cornish heather	C, F
<i>Erica x darleyensa</i>	Mediterranean pink heather	C, F
<i>Escalonia</i> spp.	Escallonia	C, F
<i>Eugenia myrtifolia</i>	Teenie genie brushcherry	C, F
<i>Eugenia myrtifolia 'Globulus'</i>	Dwarf brush cherry	C, F
<i>Euonymus fortunei</i>	Canadale gold euonymus	C, F
	Emerald'n gold euonymus	F

<i>Euonymus japonica</i>	Sunspot euonymus	C, F
	Silver king euonymus	F
	Chollipo euonymus	C, F
	Gold spot euonymus	C, F
	Silver princess euonymus	C, F
	Variegated evergreen euonymus	C, F
<i>Euonymus kiatschovica</i>	Spreading euonymus	C, F
<i>Euonymus vegetus</i>	Bigleaf wintercreeper	C, F
<i>Fatsia japonica</i>	Japanese aralia	C, F
<i>Felicia amelloides</i>	Blue marguerite	C, F
<i>Forsythia intermedia</i>	Forsythia, border	C, F
<i>Forsythia x 'Spring glory'</i>	Spring glory forsythia	C, F
<i>Fuchsia x "Santa Claus"</i>	Santa Claus fuchsia	C, F
<i>Gardenia jasminoides</i>	August beauty gardenia	C, F
	Gardenia	C, F
	Miniature gardenia	C, F
	Radican gardenia	C, F
<i>Gaultheria procumbens</i>	Wintergreen	C, F
<i>Gaultheria shallon</i>	Salal/lemon leaf	C, F
<i>Gelsemium sempervirens</i>	Carolina jessamine	C, F
<i>Genista pilosa</i>	Woadwaxen	C, F
<i>Hamamelis virginiana</i>	Common witch hazel	C, F
<i>Hardenbergia violacea</i>	Lilac vine	C, F
<i>Hebe buxifolia</i>	Boxleaf hebe	C, F
<i>Hibiscus rosa-sinensis</i>	Ross Estey-hibiscus	C, F
<i>Hibiscus syriacus</i>	Rose of Sharon, Red Bird	C, F
	Rose of Sharon, Red Heart	F
	Rose of Sharon, Woodbridge	C, F
<i>Ilex aquifolium</i>	Balkans holly	F
	Gold coast holly	F
<i>Ilex aquipernyi</i>	San Jose holly	C, F
<i>Ilex attenuata</i>	Savannah holly	C, F
<i>Ilex cornuta</i>	Burford holly	C, F
	dwarf Burford holly	C, F
	needle point holly	C, F
	Holly, Chinese	
<i>Ilex crenata</i>	Compacta-dwarf Japanese holly	C, F
	Convexa holly	C, F
	Dwarf Chinese holly	C, F
	Green luster holly	C, F
	Helleri-Heller's Japanese holly	C, F
	Hetzii's Japanese holly	C, F
	Stokesii Japanese holly	C, F
<i>Ilex glabra</i>	Compacta-compact inkberry holly	C, F
<i>Ilex glabra</i>	Nordica-inkberry holly	C, F
<i>Ilex meserveae</i>	Blue boy holly	C, F
	Blue girl holly	C, F
	China boy holly	C, F
	China girl holly	C, F
	Ebony magic holly	F
<i>Ilex vomitoria</i>	Nana-dwarf yaupon holly	C, F
	Pendula-weeping yaupon holly	C, F
	yaupon holly	C, F
<i>Illicium annisatum</i>	Mystery gardenia	C, F
<i>Itea ilicifolia</i>	Henry Garnet holly leaf sweetspire	C, F
<i>Ixora collinea</i>	Ixora	C, F

<i>Juniperus chinensis</i>	Hollywood juniper	C, F
	Media-old gold juniper	C, F
	pfitzer juniper	C, F
	Pfizerana glauca-blue juniper	C, F
	Pfizerana-pfizer juniper	C, F
	Sea green juniper	F
	Torulosa-hollywood juniper	C, F
<i>Juniperus conferta</i>	Emerald sea shore juniper	C, F
	Shore juniper	C, F
<i>Juniperus horizontalis</i>	Andorra juniper	C, F
	Bar Harbor juniper	C, F
	Blue chip juniper	C, F
	Blue rug juniper	C, F
	Creeping juniper	C, F
	Dwarf Andorra juniper	C, F
	Huntington blue juniper	C, F
	Plumosa-Andorra juniper	C, F
	Wiltonii-blue carpet juniper	C, F
<i>Juniperus procumbens</i>	Nana-dwarf Japanese garden juniper	C, F
<i>Juniperus prostrata</i>	Prostrata juniper	C, F
<i>Juniperus sabina</i>	Broadmoor juniper	C, F
	Foemina-Hicks juniper	C, F
	Savin juniper	C, F
	Tamariscifolia-Tam juniper	C, F
<i>Juniperus scopulorum</i>	Emerald green juniper	F
	Wichita blue juniper	C, F
<i>Juniperus squamata</i>	Blue juniper	C, F
	Blue star juniper	C, F
	Parsonii juniper	C, F
<i>Kalmia latifolia</i>	Laurel, mountain	C, F
<i>Lagerstroemia indica</i>	Crape myrtle	C, F
<i>Lantana spp.</i>	Lantana	C, F
<i>Leucophyllum frutescens</i>	Texas sage	C, F
<i>Leucophyllum laevigatum</i>	Chihuahan sage	C, F
<i>Leucothoe axillaris</i>	Leucothoe, coast	C, F
<i>Leucothoe fontanesiana</i>	Leucothoe, drooping	C, F
<i>Ligustrum japonicum</i>	Privet, Japanese	C, F
	wax ligustrum	C, F
	yellow tip ligustrum	C, F
<i>Ligustrum lucidum</i>	Privet, glossy	C, F
<i>Ligustrum ovalifolium</i>	California privet	F
<i>Ligustrum texanum</i>	Howardi privet	C, F
	wax leaf privet	C, F
<i>Ligustrum vicaryi</i>	Privet, golden	F
	Vicary golden privet	F
<i>Ligustrum vulgare</i>	Lodense privet	C, F
<i>Livistona chinensis</i>	Chinese fountain palm	F
<i>Lonicera fragrantissima</i>	Winter honeysuckle	C, F
<i>Lonicera periclymenum</i>	Flowering woodbine	C, F
	Serotina woodbine	C, F
<i>Lonicera sempervirens</i>	Trumpet honeysuckle	C, F
<i>Loropetalum chinense</i>	Sizzling pink fringe flower	C, F
<i>Loropetalum chin rubrum 'Razzleb'</i>	Razzleberri fringe flower	C, F
<i>Mahonia aquifolium compacta</i>	Dwarf Oregon grape	C, F
<i>Mahonia bealei</i>	Leather leaf mahonia	C, F
<i>Mahonia repens</i>	Creeping mahonia	C, F

<i>Michelia figo</i>	Banana shrub	C, F
<i>Myrica cerifera</i>	Wax myrtle	C, F
<i>Myoporum parvifolium</i>	Putah creek	C, F
<i>Nandina domestica</i>	Compacta-dwarf heavenly bamboo	C, F
	Harbour dwarf-heavenly bamboo	C, F
	Heavenly bamboo (Nandina)	C, F
	Nana compacta-heavenly bamboo	C, F
	Nana purpurea-heavenly bamboo	C, F
	Woods dwarf-heavenly bamboo	C, F
<i>Nerium oleander</i>	Hardy red oleander	C, F
	Oleander	C, F
	Ruby lace oleander	C, F
<i>Osmanthus fortunei</i>	Fortunes osmanthus	C, F
<i>Osmathus fragrans</i>	Sweet olive	C, F
<i>Pennisetum setaceum 'Rubrum'</i>	Purple fountain grass	C, F
<i>Phoenix roebelenii</i>	Pigmy date palm	C, F
<i>Photinia fraseri</i>	Fraser's photinia	C, F
<i>Physocarpus opulifolius</i>	Dwarf ninebark	C, F
<i>Pieris japonica</i>	Lily-of-the-valley	C, F
	Mountain fire lily-of-the-valley	C, F
	Snowdrift lily-of-the-valley	C, F
	Temple bells lily-of-the-valley	C, F
	Valley rose lily-of-the-valley	C, F
	Valley valentine lily-of-the-valley	C, F
<i>Pieris japonica x forestii</i>	Forest flame lily-of-the-valley	C, F
<i>Pinus mugo</i>	Mugo-mugho pine	C, F
<i>Pittosporum tobira</i>	Green pittosporum	C, F
	Wheeler's dwarf pittosporum	C, F
<i>Plumbago ariculata</i>	Blue cape plumbago	F
<i>Plumbago capensis</i>	Plumbago	C, F
<i>Podocarpus macrophyllus</i>	Yewpine	C, F
<i>Polygala fruticosa</i>	Sweet pea shrub	C, F
<i>Polystichum polyblepharum</i>	Tassel fern	C, F
<i>Potentilla fragiformis</i>	Cinquefoil	F
<i>Potentilla fruticosa</i>	Cinquefoil	C, F
	Floppy disc cinquefoil	C, F
	Gold drop potentilla	F
	Goldfinger potentilla	C, F
	Red ace potentilla	C, F
	Sunset potentilla	C, F
	Tangerine potentilla	C, F
<i>Potentilla spp.</i>	Cinquefoil	
<i>Potentilla verna</i>	Spring cinquefoil	C, F
<i>Prunus glandulosa</i>	Dwarf pink flowering almond	C, F
<i>Prunus laurocerasus 'Otto luykens'</i>	Otto Luykens English laurel	C, F
<i>Psidium cattleianum</i>	Strawberry guava	C, F
<i>Pyracantha fortuneana</i>	Lolendei Monrovia pyracantha	C, F
	Monon pyracantha	F
	Red elf hybrid pyracantha	F
	Rutgers hybrid pyracantha	C, F
	Santa Cruz pyracantha	C, F
	Victory pyracantha	F
<i>Raphiolepis indica</i>	Charisma-Monruce raphiolepis	C, F
	Enchantress-Moness raphiolepis	F
	Raphiolepis (India hawthorn)	C, F
	Springtime-Monme raphiolepis	F

<i>Rhaphiolepis ovata</i>	Roundleaf raphiolepis	C, F
<i>Rhododendron calendulaceum</i>	Cannon's double azalea	C, F
	Flame azalea	F
	Golden flare azalea	C, F
	Klondike azalea	C, F
	Butterfly rhododendron	F
<i>Rhododendron campylocarpum</i>	PJM rhododendron	C, F
<i>Rhododendron carolinianum x daurium</i>	Catawba album rhododendron	C, F
	Catawba rhododendron	C, F
	Lord Roberts rhododendron	C, F
	Rocket rhododendron	C, F
<i>Rhododendron caucasicum x ponticum</i>	Cunningham White rhododendron	C, F
<i>Rhododendron exbury</i>	Cannon's double azalea	C, F
	Golden flare azalea	C, F
	Klondike azalea	C, F
	Gomer Waterer rhododendron	C, F
<i>Rhododendron forrestii repens</i>	Elizabeth rhododendron	C, F
<i>Rhododendron forrestii x griersonianum</i>		
<i>Rhododendron griffithianum</i>	Jean Marie rhododendron	C, F
	America rhododendron	C, F
<i>Rhododendron hybrid spp.</i>	English Roseum rhododendron	F
	Nova Zembla rhododendron	C, F
	Scintillation rhododendron	C, F
	Rhododendron	C, F
<i>Rhododendron impeditum</i>	Formosa azalea	C, F
<i>Rhododendron indica</i>	Waucabusa azalea	C, F
<i>Rhododendron kaempferi</i>	Blue danube azalea	C, F
<i>Rhododendron kerume</i>	Coral bells azalea	C, F
	Hino crimson azalea	C, F
	Hino pink azalea	C, F
	Mildred azalea	C, F
	Snow azalea	C, F
	Rhodie max (rosebay)	C, F
<i>Rhododendron maximum</i>		
<i>Rhododendron mucronulatum</i>	Rhododendron	F
<i>Rhododendron obtusum</i>	Hino-crimson azalea	C, F
<i>Rhododendron ponticum</i>	Chionoides rhododendron	C, F
	Daphnoides rhododendron	C, F
<i>Rhododendron racemosum</i>	Dwarf scarlet wonder rhododendron	C, F
	Tribly rhododendron	C, F
	Unique rhododendron	C, F
	Vulcan rhododendron	C, F
	Ramapo rhododendron	C, F
<i>Rhododendron sassthigiatim x carolinianum</i>		
<i>Rhododendron satuski</i>	Gumpo pink azalea	C, F
	Higasa azalea	F
<i>Rhododendron spp. hybrids</i>	Reijn azalea	C, F
	Carror azalea	C, F
	Fashion azalea	C, F
	Gerard Christina azalea	F
	Girard Roberta azalea	C, F
	Golden flare exbury azalea	F
	Helmut vogel azalea	F
	Hersey red azalea	F
	Hot shot azalea	C, F
	Hume azalea	F
	Inga azalea	F

	Irene Koster azalea	C, F
	President Clay azalea	C, F
	Tradition azalea	C, F
<i>Rhus lancea</i>	Sumac, African	C, F
<i>Rhus typhina</i>	Staghorn sumac	C, F
<i>Rosa x 'Flower carpet'</i>	Red groundcover rose	C, F
<i>Rosa rugosa</i>	Ramanas rose	C, F
<i>Rosmarinus officinalis</i>	Rosemary	F
<i>Senecio cineraria</i>	Dusty-miller	
<i>Skimmia japonica</i>	Japanese skimmia	C, F
<i>Skimmia revesiana</i>	Reeve's skimmia	C, F
<i>Solanum rantonetii 'Royal purple'</i>	Paraguay nightshade	C, F
<i>Spiraea bumalda</i>	Anthony Waterer spiraea	C, F
<i>Spiraea cinerea</i>	First snow spiraea	C, F
<i>Spiraea japonica</i>	Dolchia spiraea	C, F
	Japanese alpine spiraea	C, F
	Magic carpet spiraea	C, F
	Neon flash spiraea	C, F
	Shirobana spiraea	C, F
<i>Spiraea vanhouttei</i>	Bridal wreath	C, F
<i>Streptosolen jamesonii</i>	Marmalade bush	C, F
<i>Syringa rothomagensis</i>	Chinese lilac	C, F
<i>Syringa vulgaris</i>	Lilac, common	F
<i>Taxus cuspidata</i>	Yew, Japanese	F
<i>Tecomaria capensis</i>	Cape honeysuckle	C, F
<i>Ternstroemia gymnanthera</i>	Ternstroemia, Japanese	C, F
<i>Teucrium fruticans</i>	Bush germander	C, F
<i>Thevetia nerifolia</i>	Yellow oleander	C, F
<i>Thuja occidentalis</i>	Emerald arborvitae	C, F
	Globosa-globe arborvitae	C, F
	Little giant-dwarf arborvitae	C, F
	Nigra-dark American arborvitae	C, F
	Pyramidalis arborvitae	C, F
	Rheingold arborvitae	C, F
	Techny arborvitae	F
	Woodwardii arborvitae	C, F
<i>Thuja orientalis</i>	Aureus nana-dwarf golden arborvitae	C, F
	Minima glauca-dwarf arborvitae	C, F
<i>Tibouchina urvilleana</i>	Princes flower	C, F
<i>Veitchia merrilli</i>	Christmas palm	F
<i>Viburnum bodnantense</i>	Pink dawn viburnum	C, F
<i>Viburnum carlesii</i>	Koreanspice viburnum	C, F
<i>Viburnum davidii</i>	David viburnum	C, F
<i>Viburnum japonicum</i>	Viburnum	F
<i>Viburnum judd (V. x juddii)</i>	Viburnum	C, F
<i>Viburnum lantana</i>	Wayfaring tree	F
<i>Viburnum opulus sterile</i>	Common snowball viburnum	F
<i>Viburnum plicatum tomentosum</i>	Doublefile viburnum	C, F
<i>Viburnum setigerum</i>	Tea viburnum	F
<i>Viburnum tinus compactum</i>	Spring bouquet viburnum	F
<i>Viburnum trilobum</i>	Cranberry bush	C, F
<i>Viburnum trilobum compactum</i>	Dwarf cranberry bush	C, F
<i>Viburnum x pragense</i>	Viburnum	C, F
<i>Weigela florida</i>	Bristol ruby weigela	C, F
	Java red weigela	C, F
	Minuet weigela	C, F

<i>Xylosma congestum</i>	Xylosma	F
<i>Yucca filamentosa</i>	Yucca	C, F

Groundcovers/Perennials
**Recommended
Treatment Method:
C = Container Grown
F = Field Grown**

Scientific Name	Common Name	
<i>Achillea</i> spp.	Yarrow	C, F
<i>Achillea filipendulina</i>	Moonshine-fern/leaf yarrow	F, C
<i>Achillea millefolium</i>	Common yarrow	C, F
<i>Achillea millefolium</i> 'Paprika'	Paprika yarrow	C, F
<i>Achillea tomentosa</i>	Wooly yarrow	C, F
<i>Agapanthus africanus</i>	Lilly of the Nile	C, F
	Queen Anne lily of the Nile	C, F
<i>Agapanthus</i> 'Peter pan'	Lily of the Nile	C, F
<i>Ammophila breviligulata</i>	Beechgrass	C, F
<i>Aptenia cordifolia</i>	Red apple aptenia	C, F
<i>Aquilegia</i> x 'Dragon fly'	Columbine	C, F
<i>Arctotheca calendula</i>	Cape weed	F
<i>Argyranthemum frutescens</i> "Butterfly"	Butterfly argyranthemum	C, F
<i>Asparagus densiflorus</i> 'Myers'	Pony tail fern	C, F
<i>Asparagus retrofractus</i>	(No common name)	C, F
<i>Asparagus varieegata</i>	Tree fern	C, F
<i>Asparagus</i> var. 'Meegers'		C, F
<i>Aspidistra elatior</i>	Cast iron plant	C, F
<i>Aster novae-angliae</i>	New England aster	C, F
<i>Aster novi-belgii</i>	New York aster	C, F
<i>Aster novi-belgii</i> 'Persian rose'	Persian rose dwarf aster	C, F
<i>Begonia sepmerflorens</i> 'Amb white'	White ambassador begonia	C, F
<i>Bergenia cordifolia</i>	Heartleaf bergenia	C, F
<i>Bidens ferulifolia</i> 'Peters gold'	Peter's gold bidens	C, F
<i>Brachycome</i> x 'New amethyst'	Swan river daisy new amethyst	C, F
<i>Callistepheus chinensis</i>	China aster	C, F
<i>Carex albula</i>	Frosty curls sedge	C, F
<i>Carex</i> spp.	Variegated carex	C, F
<i>Carpobrotus edulis</i>	Ice plant, largeleaf (see label)	F
<i>Catharanthus roseus</i>	Madagascar periwinkle	C, F
<i>Chrysanthemum maximum</i>	Shasta daisy	C, F
<i>Chrysanthemum</i> spp.	Chrysanthemum species	C, F
<i>Clivia miniata</i> 'French hybrid'	Kafir lily	C, F
<i>Coreopsis verticillata</i>	Coreopsis, threadleaf	C, F
<i>Coreopsis verticillata</i> 'Moonbeam'	Moonbeam coreopsis	C, F
<i>Cortaderia selloana</i>	Pampas grass	C, F
<i>Cuphea hyssopifolia</i>	False or Mexican heather	C, F
<i>Cyperus albostratus</i>	Dwarf umbrella grass	C, F
<i>Dahlia</i> hybrid Dwarf	Dwarf dahlia	C, F
<i>Dahlia</i> x 'Royal Dahlietta pink'	Dwarf dahlia Wendy pink	C, F
<i>Delosperma alba</i>	White iceplant	F
<i>Delosperma cooperi</i>	Ice plant	C, F
<i>Delosperma nubigenum</i>	Hardy ice plant	C, F
<i>Descampsia caespitosa</i>	Descampsia	C, F
<i>Dianthus gratianopolitanus</i> 'Treasure'	Crimson treasure cheddar pink	C, F
<i>Dianthus plumaris</i>	Cottage pink	C, F
<i>Dietes vegeta</i>	Fortnight lily	C, F
<i>Drosanthemum floribundum</i>	Trailing rosea iceplant	F
<i>Drosanthemum hispidum</i>	Iceplant	C, F

<i>Dymondia margaritae</i>	Diamond marguerite	C, F
<i>Ensete ventricosum</i>	Absynnian banana	C, F
<i>Equisetum scirpoides</i>	Dwarf horsetail	C, F
<i>Erianthus ravennae</i>	Hardy pampasgrass	C, F
<i>Erigeron speciosus</i> 'Darkest of all'	Darkest of all fleabane	C, F
<i>Euryops pectinatus</i> 'Munchkin'	Dwarf euryops	C, F
<i>Eustoma grandiflorum</i> 'Pink'	Pink lisianthus	C, F
<i>Evolvulus nuttallianus</i>	Blue daze	C, F
<i>Fatsyhedra japonica</i>	Japanese aralia	C, F
<i>Festuca ovina glauca</i>	Blue fescue	C, F
<i>Gaillardia x grandiflora</i>	Blanket flower	C, F
<i>Gazania</i> spp.	Gazania	C, F
<i>Geranium cinerium</i> "Ballerina"	Ballerina cranesbill	C, F
<i>Geranium sanguineum</i> 'Bloody cran'	Bloody cranesbill	C, F
<i>Geranium subcaulescens</i>	Black eyed magenta cranesbill	C, F
<i>Geum</i> spp	Avens	C, F
<i>Geum quellyon</i>	Geum	C, F
<i>Gypsophila paniculata</i>	Baby's breath	C, F
<i>Hakonechloa macroaureola</i>	Golden hakonechloa	C, F
<i>Hedera canariensis</i>	Ivy, Algerian	F
<i>Hedera helix</i>	Ivy, English	C, F
<i>Helichrysum petiolare</i> 'White licorice'	White licorice helichrysum	C, F
<i>Heliotropium fragrans</i>	Common heliotrope	C, F
<i>Hemerocallis</i> spp.	Daylily	C, F
<i>Hesperaloe parvifolia</i>	Red yucca	C, F
<i>Heuchera x 'Bressingham'</i>	Bressingham coral bells	C, F
<i>Heuchera micrantha</i>	Coral bells	C, F
<i>Hosta 'Francee'</i>	Francee plantain lily	C, F
<i>Hosta fortunei</i>	Plantain lily	C, F
<i>Hosta lancifolia</i>	Albo-marginata hosta	C, F
	Narrow leafed plantain lily	C
<i>Hosta x 'Patriot'</i>	Patriot plantain lily	C, F
<i>Houttuynia cordata</i> 'Chameleon'	Chameleon Houttuynia	C, F
<i>Hymenoxys acaulis</i>	Angelita daisy	C, F
<i>Hypericum</i> spp.	St. Johnswort	C, F
<i>Impatiens walleryana</i> 'Lipstick'	Lipstick impatiens	C, F
<i>Ipomea acuminata</i> 'Blue dawn'	Blue dawn morning glory	C, F
<i>Iris pumila</i> 'Yellow'	Yellow dwarf bearded iris	C, F
<i>Iris siberica</i>	Iris	C, F
<i>Jasminum nitidum</i>	Angelwing jasmine	C, F
<i>Jasminum polyanthum</i>	Pink jasmine	C, F
<i>Lampranthus spectabilis</i>	Trailing iceplant	F
<i>Leptospermum scoparium</i>	Broom teatree/manuka	C, F
<i>Limonium perezii</i>	Statice	C, F
<i>Liriope gigantea</i>	White lily turf	C, F
	Giant lily turf	C, F
<i>Liriope muscari</i>	Lilac beauty lily turf	C, F
	Majestic lily turf	C, F
	Monroe white lily turf	C, F
	Silvery sunproof lily turf	C, F
	Variogated liriope lily turf	C, F
	Big blue lily turf	C, F
<i>Liriope spicata</i>	Green/creeping lily turf	C, F
	Silver dragon lily turf	C, F
<i>Lonicera japonica</i>	Honeysuckle, Japanese	F
<i>Lysimachia mummularia</i>	Moneywort	C, F

27/31

<i>Lysimachia punctata</i>	Dotted loosestrife	C, F
<i>Matthiola incana</i> 'Harmony'	Stock	C, F
<i>Miscanthus sinensis</i>	Eulalia grass	C, F
<i>Miscanthus sinensis</i> 'Gracillimus'	Maiden grass	C, F
<i>Moraea iridioides</i>	African iris	C, F
<i>Oenothera missouriensis</i>	Ozark sundrops	C, F
<i>Oenothera speciosa</i> "Siskiyou pink"	Siskiyou evening primrose	C, F
<i>Ophiopogon japonicus</i>	Dwarf Mondo grass	C, F
	Mondo grass	C, F
<i>Osteospermum fruticosum</i>	Daisy, trailing African	F
<i>Pachysandra terminalis</i>	Japanese spurge	C, F
<i>Parthenocissus quinquefolia</i>	Virginia creeper	C, F
<i>Pelargonium x hortorum</i>	Zonal geranium	C, F
<i>Pelargonium peltatum</i>	Ivy geranium	C, F
<i>Pennisetum alopecuroides</i>	Fountain grass	C, F
<i>Pennisetum setaceum</i>	Chrimson fountaingrass	C, F
<i>Penstemon x 'Apple blossom'</i>	Apple blossom penstemon	C, F
<i>Pentas lanceolata</i>	Star clusters	C, F
<i>Perovskia atriplicifolia</i>	Russian sage	C, F
<i>Petunia-hybrids</i>	Garden petunias	C, F
<i>Phalaris arundinacea picta</i>	Ribbon grass	C, F
<i>Phlox subulata</i>	Moss pink	C, F
<i>Polystichum polyblepharum</i>	Tassel fern	C, F
<i>Ratbida columnifera</i>	Mexican hat	C, F
<i>Rudbeckia fulgida</i>	Blackeyed Susan	C, F
<i>Ruscus hypophyllum</i>	Butcher's broom (Israeli Ruscus)	C, F
<i>Salvia grahamii</i>	Graham's sage	C, F
<i>Sasa pygmaea</i>	Dwarf bamboo	C, F
<i>Sedum x 'Autumn joy'</i>	Autumn joy stonecrop	C, F
<i>Sedum x 'Vera Jameson'</i>	Vera Jameson stonecrop	C, F
<i>Tagetes patula</i> 'Little Hero'	Little hero marigold	C, F
<i>Trachelospermum asiaticum</i>	Asaian jasmine	C, F
<i>Tulbaghia violacea</i>	Society garlic	C, F
<i>Verbena rigida</i>	veined verbena	C, F
<i>Vinca major</i>	Periwinkle, bigleaf	C, F
<i>Vinca minor</i>	Periwinkle, dwarf	F
<i>Vinca</i> spp.	Periwinkle	F

Non-bearing Trees and Vines †

Recommended Treatment Method:
C = Container Grown
F = Field Grown

Common Name

almond	F
apple	F
apricot	F
avocado	F
blackberry	F
blueberry	F
boysenberry	F
cherry, sour	F
cherry, sweet	F
currant	F
dewberry	F
elderberry	F
fig	F

28/31

filbert	F
gooseberry	F
grape, American	F
grape, European	F
grapefruit	F
kiwi	F
lemon	F
loganberry	F
macadamia nut	F
nectarine	F
olive	F
orange	F
peach	F
pear	F
pecan	F
pistachio	F
plum	F
pomegranate	F
prune	F
raspberry	F
walnut, black	F
walnut, English	F

† Non-bearing fruit and nut trees and non-bearing vineyards are defined as plants that will not bear fruit for at least one year after treatment.

Ornamental Bulbs in Landscape Settings

Gallery 75 Dry Flowable may be applied for control of susceptible annual weeds in ornamental bulbs such as bulbous iris, daffodil (narcissus), gladiolus, hyacinth, lilies, and tulip. Apply Gallery 75 Dry Flowable to the soil surface 2 to 4 weeks after planting, but prior to the emergence of annual weeds. Gallery 75 Dry Flowable may also be applied following bulb emergence but prior to flowering and after flowering. For fall planted bulbs, apply Gallery 75 Dry Flowable again in late winter or early spring to weed-free soil surfaces. For bulbs, make a single application within 30 days following planting and prior to bulb emergence. Do not exceed the 0.66 lb/A rate of Gallery 75 Dry Flowable.

Use Precautions for Ornamental Bulbs

- Do not use Gallery 75 Dry Flowable for weed control in ornamental bulbs grown for commercial production.

Gallery 75 Dry Flowable is not recommended for application to:

- Tulip plants that have emerged to a height greater than 3/4 inch.
- Gladiolus prior to emergence or if corms are less than one inch in diameter.
- Bulbs while they are flowering.

Shadehouse Areas

Gallery 75 Dry Flowable may be applied in open shade house-type structures where the natural flow of air is unimpeded. Do not apply in enclosed greenhouses or in enclosed shadehouse-type structures. Do not apply within three weeks prior to enclosing greenhouses or poly-type structures.

Christmas Tree/Conifer Plantations

Gallery 75 Dry Flowable Alone

Apply Gallery 75 Dry Flowable as a directed spray to the soil surface or as an overtop spray to established plantings of field grown Christmas tree/conifer species listed in this label. Follow all instructions provided in the "General Information" section of this label.

Use Precautions for Christmas Tree/Conifer Plantations:

Do not apply Gallery 75 Dry Flowable to seedbeds or seedling transplant beds. Apply only to established plantings. Established plants are defined as those that have been transplanted into their final growing location for a sufficient period of time to allow the soil to be firmly settled around the roots from packing and rainfall or irrigation.

Tank-Mix Combinations

Tank-mix combinations of Gallery 75 Dry Flowable plus other labeled herbicides may be used in established Christmas tree plantings. When applied according to use directions, these tank mixes will provide control of susceptible weed species listed on the respective product labels. Refer to tank mix product labels for specific use directions, precautions and limitations before use. Refer to instructions for Gallery 75 Dry Flowable in Tank Mix in the Mixing Directions section.

Gallery 75 Dry Flowable/Roundup: Apply tank mix combinations of Gallery 75 Dry Flowable plus Roundup herbicide only as directed sprays in Christmas tree plantings. When applied as directed, Gallery 75 Dry Flowable plus Roundup will provide postemergence control of susceptible weed species listed on the label for Roundup and residual preemergence control of susceptible weed species listed on the label for Gallery 75 Dry Flowable. Refer to the label for Roundup for specific use directions, precautions and limitations before use. Refer to instructions for Gallery 75 Dry Flowable in Tank Mix in the Mixing Directions section.

Precautions:

30/31

- **Do not apply sprays containing Roundup over the top of Christmas tree plantings.**
- **Extreme care must be exercised to prevent contact of sprays containing Roundup with foliage or stems of Christmas trees or other desirable plants or severe plant damage or death may result.**

Non-cropland Areas

Gallery 75 Dry Flowable herbicide is recommended as a preemergence herbicide for control of listed broadleaf weeds in non-cropland areas, including industrial sites, utility substations, parking lots, driveways, walking paths, highway guard rails, sign posts and delineators where maintenance of bare ground is desired.

Apply Gallery 75 Dry Flowable anytime prior to germination of target weeds. Areas to be treated should be free of established weeds or existing weeds should be controlled with postemergence herbicides.

Refer to the "General Information" section prior to using this product on non-cropland.

Gallery 75 Dry Flowable is compatible and can be tank mixed with other herbicides registered for use on non-cropland. Applied as directed, tank mixes containing Gallery 75 Dry Flowable will provide control of susceptible weed species listed on the respective labels. All directions, precautions and limitations on the respective product labels apply to the tank mix use. Refer to instructions for Gallery 75 Dry Flowable in Tank Mix in the Mixing Directions section.

Terms and Conditions of Use

If terms of the following Warranty Disclaimer, Inherent Risks of Use, and Limitation of Remedies are not acceptable, return unopened package at once to the seller for a full refund of purchase price paid. Otherwise, use by the buyer or any other user constitutes acceptance of the terms under Warranty Disclaimer, Inherent Risks of Use and Limitations of Remedies.

Warranty Disclaimer

Dow AgroSciences warrants that this product conforms to the chemical description on the label and is reasonably fit for the purposes stated on the label when used in strict accordance with the directions, subject to the inherent risks set forth below. Dow AgroSciences MAKES NO OTHER EXPRESS OR IMPLIED WARRANTY OF MERCHANTABILITY OR FITNESS FOR A PARTICULAR PURPOSE OR ANY OTHER EXPRESS OR IMPLIED WARRANTY.

Inherent Risks of Use

It is impossible to eliminate all risks associated with use of this product. Plant injury, lack of performance, or other unintended consequences may result because of such factors as use of the product contrary to label instructions (including conditions noted on the label, such as unfavorable temperatures, soil conditions, etc.), abnormal conditions (such as excessive rainfall, drought, tornadoes, hurricanes), presence of other materials, the manner of application or other factors, all of which are beyond the control of Dow AgroSciences or the seller. All such risks shall be assumed by buyer.

Limitation of Remedies

The exclusive remedy for losses or damages resulting from this product (including claims based on contract, negligence, strict liability, or other legal theories), shall be limited to, at Dow AgroSciences' election, one of the following:

1. Refund of purchase price paid by buyer or user for product bought, or
2. Replacement of product used.

31/31

Dow AgroSciences shall not be liable for losses or damages resulting from handling or use of this product unless Dow AgroSciences is promptly notified of such loss or damage in writing. In no case shall Dow AgroSciences be liable for consequential or incidental damages or losses.

The terms of the Warranty Disclaimer, Inherent Risks of Use and this Limitation of Remedies cannot be varied by any written or verbal statements or agreements. No employee or sales agent of the Seller or the seller is authorized to vary or exceed the terms of the Warranty Disclaimer or this Limitation of Remedies in any manner.

*Trademark of Dow AgroSciences LLC

EPA Accepted: __/__/____