

# Supplemental Labeling



DowElanco

9330 Zionsville Road

Indianapolis, Indiana 46268-1054 USA

## Formula 40\*

(EPA Reg. No. 62719-1)

### For Use in Crop Residue Management Systems in Soybeans (Preplant Application Only)

#### ATTENTION

- It is a violation of Federal law to use this product in a manner inconsistent with its labeling.
- This labeling must be in the possession of the user at the time of application.
- Authorization under FIFRA Section 3 (c)(7)(B) to use Formula 40 according to directions provided in this supplemental labeling expires on December 31, 1998. Use of these products according to these directions for use after December 31, 1998 will be illegal and sale of soybeans containing any residues of Formula 40 will constitute a violation of the Federal Food, Drug and Cosmetic Act.
- Read the label affixed to the container for Formula 40 before applying. Carefully follow all precautionary statements and applicable use directions.
- Use of Formula 40 according to this supplemental labeling is subject to all use precautions and limitations imposed by the labels affixed to product containers and this supplemental labeling.

#### Directions for Use

##### General Information

Formula 40\* herbicide may be used for postemergence control of many susceptible annual and perennial broadleaf weeds. These products may be applied prior to planting soybeans to provide foliar burn-down control of susceptible annual and perennial broadleaf weeds and certain broadleaf cover crops such as those listed on this label. Make only preplant applications to emerged weeds prior to planting soybeans grown in reduced tillage production systems. Apply only according to instructions given below.

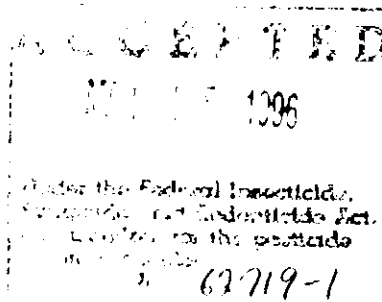
Do not use any tillage operations between herbicide application and planting of soybeans.

##### Mixing Instructions

Compatible crop oil concentrates, agricultural surfactants and fluid fertilizers approved for use on growing crops may be added to spray mixtures to increase the herbicidal effectiveness of Formula 40 on certain weeds. Read and follow all directions and precautions on this label and on the label of each product added to the spray mixture.

##### Application Procedures

Apply using air or ground equipment in a spray volume sufficient to provide uniform coverage of weeds. Use 2 or more gallons of total spray volume per acre for aerial application and 10 or more gallons per acre for ground equipment.



(continued on back)

**BEST AVAILABLE COPY**

**Application Timing and Use Rates**

Product	Broadcast Application Rate	When to Apply (Days prior to planting soybeans)
Formula 40	1.0 pt/acre	Not less than 15 days
	2.0 pt/acre	Not Less than 30 days

**Weeds Controlled**

alfalfa†	geranium, Carolina	purslane, common
bindweed†	horseweed or mare's tail	ragweed, common
bullnettle	ironweed	ragweed, giant
bittercress, smallflowered	lambsquarters, common	shepherdspurse
buttercup, smallflowered	lettuce, prickly	smartweed, Pennsylvania†
cinquefoil, common and rough	morningglory, annual	sowthistle, annual
clover, red†	mousetail	speedwell
cocklebur, common	mustard, wild	thistle, Canada†
dandelion†	onion, wild†	thistle bull
dock, curly†	pennycress, field	velvetleaf
eveningprimrose, cutleaf	peppergrass†	vetch, hairy†
garlic, wild†	plantains	Virginia copperleaf

†These weed species are only partially controlled.

For best weed control results, application should be made when weeds are small, actively growing and free of stress caused by temperature extremes, moisture stress, diseases, or insect damage. The control of individual weed species may be variable. Consult your local county agent or state agricultural extension specialist or crop consultant for advice.

**Use Precautions and Restrictions**

- **Important Notice:** Unacceptable injury to soybeans planted in treated fields may occur. Whether or not soybean injury occurs and the extent of such injury will depend on weather (temperature and rainfall) from herbicide application until soybean emergence and agronomic factors such as the amount of weed vegetation and previous crop residue present at the time of application. Injury is more likely under cool rainy conditions and where there is less weed vegetation and crop residue present.
- Do not use on sandy soils with less than 1.0% organic matter.
- Do not make more than one application per season regardless of the application rate used.
- Do not apply when weather conditions such as atmospheric temperature inversion or when wind direction favors drift from the treated area to susceptible plants.
- **Do not allow livestock grazing or harvest hay, forage or fodder from treated fields.** Livestock should be restricted from feeding/grazing of treated cover crops.
- In treated fields, plant soybean seed as deep as practical, but not less than 1.0 inch deep. Adjust the planter, if necessary, to ensure that planted seed is adequately covered.
- **Do not apply Formula 40 as described in this supplemental labeling unless you are prepared to accept the results of soybean injury, including possible stand loss and/or yield reduction.**
- During the growing season following application, do not replant treated fields with crops other than those labeled for use with Formula 40.

**Amendment(s):**

- 1 Renewal of use for postemergence broadleaf weed control prior to planting soybeans under time limited tolerance.

K1A/Formula 40/Amend-Supp/02-19-96  
 Approved \_\_\_/\_\_\_/\_\_\_  
 Replaces 122-K1AAG002.