

PM-22

Reg # 60063-8

195

Please read instructions on reverse before completing form.

Form Approved. OMB No. 2070-0060. Approval expires 2-28-95



United States
Environmental Protection Agency
Washington, DC 20460

☐ Registration
☐ Amendment
☒ Other

OPP Identifier Number

228214

Application for Pesticide - Section I

1. Company/Product Number 60063-8	2. EPA Product Manager Theresa A. Stowe	3. Proposed Classification <input checked="" type="checkbox"/> None <input type="checkbox"/> Restricted
4. Company/Product (Name) Clotram P-98M	PM# 22	
5. Name and Address of Applicant (Include ZIP Code) SOSTRAM CORPORATION 70 Mansell Court, Suite 230 Roswell, Georgia 30076 <input type="checkbox"/> Check if this is a new address	6. Expedited Review. In accordance with FIFRA Section 3(c)(3) (b)(i), my product is similar or identical in composition and labeling to: EPA Reg. No. _____ Product Name _____	

Section - II

<input type="checkbox"/> Amendment - Explain below.	<input type="checkbox"/> Final printed labels in response to Agency letter dated _____
<input type="checkbox"/> Resubmission in response to Agency letter dated _____	<input type="checkbox"/> "Me Too" Application.
<input checked="" type="checkbox"/> Notification - Explain below.	<input type="checkbox"/> Other - Explain below.

Explanation: Use additional page(s) if necessary. (For section I and Section II.)

Response to PR Notice 95-1

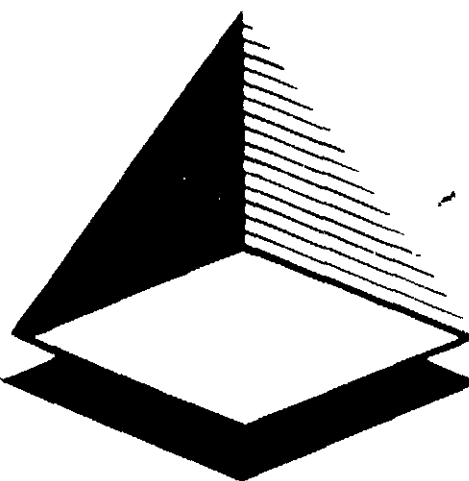
Section - III

1. Material This Product Will Be Packaged In:				2. Type of Container	
Child-Resistant Packaging <input type="checkbox"/> Yes <input type="checkbox"/> No	Unit Packaging <input type="checkbox"/> Yes <input type="checkbox"/> No	Water Soluble Packaging <input type="checkbox"/> Yes <input type="checkbox"/> No		<input type="checkbox"/> Metal	<input type="checkbox"/> Plastic
* Certification must be submitted		If "Yes" Unit Packaging wgt.	No. per container	If "Yes" Package wgt.	No. per container
3. Location of Net Contents Information <input type="checkbox"/> Label <input type="checkbox"/> Container		4. Size(s) Retail Container		5. Location of Label Directions <input type="checkbox"/> On Label <input type="checkbox"/> On Labeling accompanying product	
6. Manner in Which Label is Affixed to Product <input type="checkbox"/> Lithograph <input type="checkbox"/> Paper glued <input type="checkbox"/> Stenciled				<input type="checkbox"/> Other _____	

Section - IV

1. Contact Point (Complete items directly below for identification of individual to be contacted, if necessary, to process this application.)		
Name Linda C. Watson	Title Consultant/Regulatory Affairs	Telephone No. (Include Area Code) (912) 482-2771
Certification I certify that the statements I have made on this form and all attachments thereto are true, accurate and complete. I acknowledge that any knowingly false or misleading statement may be punishable by fine or imprisonment or both under applicable law.		6. Date Application Received (Stamped)
2. Signature 	3. Title Consultant/Regulatory Affairs	
4. Typed Name Linda C. Watson	5. Date September 5, 1995	

275



SOSTRAM

CORPORATION

CLORTRAM™ P-98M

Fungicide for Mildew Control on Paint Film

ACTIVE INGREDIENT

Chlorothalonil (tetrachloroisophthalonitrile) 98.0%

INERT INGREDIENTS

..... 2.0%

TOTAL

..... 100.0%

KEEP OUT OF REACH OF CHILDREN

DANGER

STATEMENT OF PRACTICAL TREATMENT

IF IN EYES: Flush eyes with water for 15 minutes. Get medical attention immediately.

IF ON SKIN: Wash exposed areas of skin with soap and warm water.

IF INHALED: Remove person to fresh air and get medical attention immediately.

IF SWALLOWED: Drink promptly a large quantity of milk, egg whites, gelatin solution or if these are not available large quantities of water. Avoid alcohol.

NOTE TO PHYSICIAN: Probable mucosal damage may contraindicate the use of gastric lavage.

See Back Panel for Additional Precautionary Statements.

EPA REG. NO. 60063-8

EPA EST. NO.

SOSTRAM CORPORATION

70 Mansell Court, Suite 230

Roswell, Georgia 30076

NET CONTENTS: 100 pounds/45.4 KILOGRAMS

395

**PRECAUTIONARY STATEMENTS
HAZARDS TO HUMANS AND DOMESTIC ANIMALS
DANGER**

Corrosive, causes severe eye damage. May be a potential skin sensitizer.

DO NOT get in eyes, on skin, or on clothing. Wear goggles or face shield, rubber gloves, long sleeve shirt, and long pants when handling this product. Wash thoroughly with soap and water after handling. May be fatal if inhaled. DO NOT breathe dust. Wear a mask or pesticide respirator jointly approved by the Mine Safety and Health Administration and the National Institute for Occupational Safety and Health. Harmful if swallowed or absorbed through the skin. Remove contaminated clothing and wash before reuse.

This product may produce temporary allergic side effects characterized by redness of the eyes, mild bronchial irritation and redness or rash on exposed skin areas. Persons having allergic reaction should contact a physician.

NOTE TO PHYSICIAN: Persons having allergic reaction respond to treatment with antihistamines or steroid creams and/or systemic steroids.

ENVIRONMENTAL HAZARDS

Do not discharge effluent containing this product into lakes, streams, ponds, estuaries, oceans or other waters unless in accordance with the requirements of a National Pollutant Discharge Elimination System (NPDES) permit and the permitting authority has been notified in writing prior to discharge. Do not discharge effluent containing this product to sewer systems without previously notifying the local sewage treatment plant authority. For guidance, contact your State Water Board or Regional Office of the Environmental Protection Agency.

DIRECTIONS FOR USE

It is a violation of Federal law to use this product in a manner inconsistent with its labeling.

NOTE TO USER: Technical chlorothalonil may produce temporary allergic side effects characterized by redness of the eyes, mild bronchial irritation and redness or rash on exposed skin areas. Persons having allergic reaction should contact a physician.

Refer to Technical Bulletin for use directions.

BEST AVAILABLE COPY

STORAGE AND DISPOSAL

DO NOT contaminate water, food or feed by storage or disposal. Open dumping is prohibited.

STORAGE: Store in a dry place.

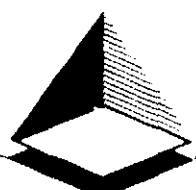
PESTICIDE DISPOSAL: Pesticide wastes are toxic. Improper disposal of excess pesticide, pesticide formulation or rinsate is a violation of Federal law. If these wastes cannot be disposed of by use according to label instructions, contact your State Pesticide or Environmental Control Agency, or the Hazardous Waste representative at the nearest EPA Regional office for guidance.

CONTAINER DISPOSAL: Triple rinse (or equivalent). Then offer for recycling or reconditioning, or puncture and dispose of in a sanitary landfill, or incineration, or, if allowed by state and local authorities, by burning. If burned, stay out of smoke.

WARRANTY AND LIMITATION OF DAMAGES

Seller warrants that this material conforms to its chemical description and is reasonably fit for the purposes stated on the label when used in accordance with directions under normal conditions of use and Buyer assumes the risk of any use contrary to such directions. Seller makes no other express or implied warranty, including any other express or implied warranty of Fitness or of Merchantability, and no agent of Seller is authorized to do so except in writing with a specific reference to this warranty. In no event shall seller's liability for any breach of warranty exceed the purchase price of the material as to which a claim is made.

495



SOSTRAM
CORPORATION

CLORTRAM™ P-98M

TECHNICAL BULLETIN

Fungicide for mildew
Control on Paint Film

Sostram Corporation
70 Mansell Court, Suite 230
Roswell, GA 30076

EPA REG. NO. 60063-8
EPA EST. NO.

CLORTRAM P-98M is a broad-spectrum microbicide for control of fungi. Its high degree of activity provides excellent performance characteristics for use as a mildewcide in:

- latex exterior and interior emulsion paints. For exterior paints, use 5 - 10 pounds per 100 gallons. For interior paints, use 2.5 - 5 pounds per 100 gallons.
- solvent-based paints at levels of 5 - 12 pounds per 100 gallons.

CLORTRAM P-98M has several desirable properties which are important in manufacturing fungus-resistant paint:

- extremely low water solubility.
- low vapor pressure.
- fine particle size.
- excellent pH stability.
- white color.

BEST AVAILABLE COPY

DIRECTIONS FOR USE

It is a violation of Federal law to use this product in a manner inconsistent with its labeling.

NOTE TO USER: Technical chlorothalonil may produce temporary allergic side effects characterized by redness of the eyes, mild bronchial irritation and redness or rash on exposed skin areas. Persons having allergic reaction should contact a physician.

Latex Emulsion Paints

CLORTRAM P-98M, a micromilled powder, is best dispersed during the pigment grinding operation. Grinding equipment normally used in the paint industry is entirely satisfactory.

Generally, 5-10 pounds of CLORTRAM P-98M per 100 gallons of exterior paint are sufficient for effective mildew control in the paint film. In extreme mildew areas, such as the Gulf Coast, levels of up to 10 pounds are recommended. Levels of 2.5-5 pounds have been found effective in interior latex paint. CLORTRAM P-98M is compatible with zinc oxide in latex paints.

CLORTRAM P-98M can be used with either unmodified or alkyl modified acrylic, vinyl acrylic or polyvinyl acetate latexes.

If an in-can preservative is used in combination with CLORTRAM P-98M, its compatibility with CLORTRAM P-98M should be examined first.

Solvent-Based Exterior Paints

CLORTRAM P-98M can be used to aid in protecting solvent-based exterior paint films from mold growth at treatment levels of 5 - 12 pounds per 100 gallons. Again, dispersion is readily accomplished during the pigment grinding operation. As in the case of latex paints, zinc oxide can be used with CLORTRAM P-98M.

KEEP OUT OF REACH OF CHILDREN

DANGER

STATEMENT OF PRACTICAL TREATMENT

IF IN EYES: Flush eyes with water for 15 minutes. Get medical attention immediately.

IF ON SKIN: Wash exposed areas of skin with soap and warm water.

IF INHALED: Remove person to fresh air and get medical attention immediately.

IF SWALLOWED: Drink promptly a large quantity of milk, egg whites, gelatin solution or if these are not available, large quantities of water. Avoid alcohol.

NOTE TO PHYSICIAN: Probable mucosal damage may contraindicate the use of gastric lavage.

PRECAUTIONARY STATEMENTS

HAZARDS TO HUMANS AND DOMESTIC ANIMALS

DANGER

Corrosive, causes severe eye damage. May be a potential skin sensitizer. DO NOT get in eyes, on skin, or on clothing. Wear goggles or face shield, rubber gloves, long sleeve shirt and long pants when handling this product. Wash thoroughly with soap and water after handling. May be fatal if inhaled. DO NOT breathe dust. Wear a mask or pesticide respirator jointly approved by the Mine Safety and Health Administration and the National Institute for Occupational Safety and Health. Harmful if swallowed or absorbed through the skin. Remove contaminated clothing and wash before reuse.

This product may produce temporary allergic side effects characterized by redness of the eyes, mild bronchial irritation and redness or rash on exposed skin areas. Persons having allergic reaction should contact a physician. NOTE TO PHYSICIAN: Persons having allergic reaction respond to treatment with antihistamines or steroid creams and/or systemic steroids. In case of inhalation, remove person to fresh air and get medical attention immediately.

ENVIRONMENTAL HAZARDS

595

Do not discharge effluent containing this product into lakes, streams, ponds, estuaries, oceans or other waters unless in accordance with the requirements of a National Pollutant Discharge Elimination System (NPDES) permit and the permitting authority has been notified in writing prior to discharge. Do not discharge effluent containing this product to sewer systems without previously notifying the local sewage treatment plant authority. For guidance contact your State Water Board or Regional Office of the Environmental Protection Agency.

STORAGE AND DISPOSAL

DO NOT contaminate water, food or feed by storage or disposal. Open dumping is prohibited.

STORAGE: Store in a dry place.

PESTICIDE DISPOSAL: Pesticide wastes are toxic. Improper disposal of excess pesticide, pesticide formulation or rinsate is a violation of Federal law. If these wastes cannot be disposed of by use according to label instructions, contact your State Pesticide or Environmental Control Agency, or the Hazardous Waste representative at the nearest EPA Regional Office for guidance.

CONTAINER DISPOSAL: Empty container thoroughly. Then offer for recycling or reconditioning, or puncture and dispose of in a sanitary landfill, or incineration, or, if allowed by state and local authorities, by burning. If burned, stay out of smoke.

CONTAINER

CLORTRAM P-98M is shipped in 100-pound net weight polyethylene-lined fiber drums.

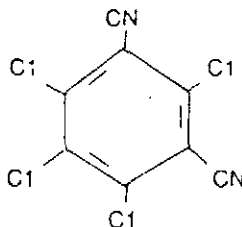
WARRANTY AND LIMITATION OR DAMAGES

Seller warrants that this material conforms to its chemical description and is reasonably fit for the purposes stated on the label when used in accordance with directions under normal conditions of use and Buyer assumes the risk of any use contrary to such directions. Seller makes no other express or implied warranty, including any other express or implied warranty of Fitness or of Merchantability, and no agent or Seller is authorized to do so except in writing with a specific reference to this warranty. In no event shall Seller's liability for any breach of warranty exceed the purchase price of the material as to which a claim is made.

CLORTRAM™ P-98M TECHNICAL BULLETIN

Typical properties

Chemical Tetrachloroisophthalonitrile
Active content, % 98% minimum
Structural Formula

BEST AVAILABLE COPY

Empirical Formula $C_8Cl_4N_2$
Molecular Weight 265.9
Melting Range, °C 250-257
Boiling Point, °C >360° C at 760 mm Hg
Vapor Pressure 5.72×10^{-7} Torr @ 25°C
Hydrolysis Rate Does not hydrolyze in either moderate alkaline (pH 9) or acidic aqueous media
Physical State 3-5 micron micromilled powder
Color White
Odor Pure-Odorless
Technical-Slight pungent odor
Stability Thermally stable under normal temperature of storage.
Chemically stable in mild to moderate alkaline or acidic aqueous media. Stable to ultraviolet radiation.
Corrosivity Noncorrosive to metals
Brightness (Tappi method) 98.8 - 99.0
Density 30 lbs / ft³