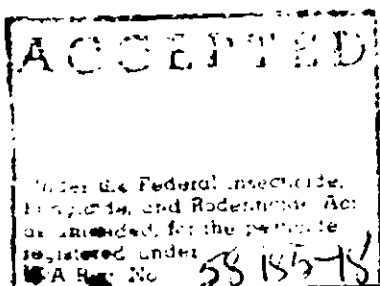


SIERRA

Sierra Chemical Company
P O Box 4003
1001 Yosemite Drive, Milpitas, CA 95035
Tel 408/263-8080 • TWX 910/338 0565

DYCARB®

INSECTICIDE
FOR
HORTICULTURAL PLANTS



ACTIVE INGREDIENTS:

BENDIOCARB: (2,2 - dimethyl, 1,3 - benzodioxol-4-yl methylcarbamate) 76%

INERT INGREDIENTS: 24%

TOTAL 100%

KEEP OUT OF REACH OF CHILDREN
WARNING
HARMFUL OR FATAL IF SWALLOWED

STATEMENT OF PRACTICAL TREATMENT

IF SWALLOWED, induce vomiting immediately by giving two glasses of water and sticking finger down throat. Never give anything by mouth to an unconscious person. **GET MEDICAL ATTENTION IMMEDIATELY.**

IF INHALED, have patient lie down and keep warm. Transfer to hospital immediately for medical attention.

IF ON SKIN, wash thoroughly with soap and water.

IF IN EYES, flush immediately with plenty of water for at least 15 minutes. **GET MEDICAL ATTENTION.**

NOTE TO PHYSICIAN: Contains anticholinesterase carbamate insecticide. In case of overexposure, give 2 mg. (equivalent to 1/30 grain, adult dose) of atropine sulfate. Repeat as necessary.

SEE BACK PANEL FOR ADDITIONAL PRECAUTIONARY STATEMENTS

EPA EST. NO. 602-MO-1

EPA REG. NO. 58185-18

6134

2 LB. (0.9 Kg)

SIERRA CROP PROTECTION COMPANY
1001 Yosemite Drive, Milpitas, CA 95035

**PRECAUTIONARY STATEMENTS
HAZARDS TO HUMANS & DOMESTIC ANIMALS**

WARNING

Harmful or fatal if swallowed. May be absorbed through the skin. Avoid contact with the eyes, skin, and clothing. If contact occurs, wash skin and clothing immediately with soap and warm water, and eyes with clean water.

Do not rub eyes or mouth with hands. If you feel sick in any way, STOP WORK and get help right away. See First Aid (Practical Treatment) section.

Avoid breathing and working in spray mist or dust.

When applying in outdoor sites, keep all unprotected persons, children, and animals away from treated area or where there is danger of drift.

Do not use on or contaminate fruit, vegetables or other food or feed crops. Do not store near food or feed products.

ENVIRONMENTAL HAZARDS

This pesticide is toxic to fish and wildlife. Do not apply directly to water or wet lands (swamps, bogs, marshes, and potholes). Drift and runoff from treated areas may be hazardous to aquatic organisms in neighboring areas. Do not contaminate water by cleaning of equipment or disposal of waste.

This product is highly toxic to bees exposed to direct treatment on blooming crops or weeds. Do not apply this product or allow it to drift to blooming crops or weeds if bees are visiting the treatment area.

PHYSICAL OR CHEMICAL HAZARDS

Do not use or store near heat or open flame.

DIRECTIONS FOR USE

IT IS A VIOLATION OF FEDERAL LAW TO USE THIS PRODUCT IN A MANNER INCONSISTENT WITH ITS LABELING.

ONLY FOR SALE TO, USE, AND STORAGE BY SERVICE-PERSONS.

CHEMIGATION: Refer to supplemental labeling entitled "CHEMIGATION INFORMATION" for use directions for chemigation. Do not apply this product through any irrigation system unless the supplemental labeling on chemigation is followed.

Add recommended amount to a partially filled spray tank under agitation. Complete filling to the desired volume. Keep agitated to insure even suspension of material. Make up no more than will be used in one application.

For control of greenhouse, interiorscape and outdoor pests, spray DYCARB® to glister. For interiorscapes, apply only when there is no one but the properly out-fitted applicator present and allow no one near the plants until the spray is completely dry.

Apply in accordance with the following rates:

PEST	
12 to 20 oz. in 100 gal. of water.	
Chrysanthemum aphid	Elm leaf beetle (larvae)
Green apple aphid	Willow leaf beetle (larvae)
Hemispherical scale	Poplar tent maker
Florida wax scale	Yellowneck caterpillar
Spirea aphid	Spring cankerworm
Tea scale	Mimosa webworm
Citrus mealybug	Obscure root weevil (adult)
Hawthorne lacebug	Greenhouse whitefly
Eastern tent caterpillar	Citrus blackfly
Fall webworm	Japanese beetle (adult)
Thrips	Black vine weevil
Azalea lacebug	Bagworm
Ixodes mealybug (adult)	
20 to 40 oz. in 100 gal. of water	
Nantucket pine tip moth	Ixora scale
Pales pine weevil	Azalea caterpillar
Northern pine weevil	Camellia scale
Leafroller	2-Spotted mite
Indian wax scale (crawlers)	Collembola
Euonymus scale (crawlers)	Ilex leafminer

WARRA

This material conforms to the description on the label and is reasonably fit for the purposes referred to of soil, the insect problem, condition of the crop, incompatibility with other chemicals not specifically listed by the seller. Buyer assumes all risks of use, storage, or handling, of this material not in strict accordance with the label. MERCHANTABILITY IS MADE.

The word WARRA is a registered trademark of Warren Corp. Product

Use DYCARB® to control pests on the following non-edible horticultural plants

HERBACEOUS

African violet
 Ageratum
 Aglaonema
 Antirrhinum
 Ascarina
 Asparagus
 springer
 Asplenium
 Baby's-breath
 Begonia
 Calathea
 Calendula
 Celosia
 Chrysanthemum
 Cineraria
 Cissus
 Coleus
 Cyrtomium
 Daffodil
 Dahlia
 Dianthus
 Dieffenbachia
 Cracaena
 Dryopteris
 Eppremnum
 Fern spp
 Four-o'clock
 Fuchsia
 Gazania
 Geranium
 Gladiolus
 Guava

WOODY

Abies*
 Acer*
 Aborvitae*
 Azalea*
 Barberry*
 Birch*
 Boxwood
 Brassia
 Camellia*
 Cedar
 Cephaletaxus*
 Cercis*
 Cherry
 Cornus*
 Cotoneaster*
 Crateagus*
 Crape Myrtle
 Euonymus*
 Fatsia*
 Ficus
 Fountain grass
 Flowering
 almond
 Flowering
 crabapple
 Gardenia
 Hemlock*
 Hydrangea*
 Ilex*
 Ixora
 Juniper*
 Ligustrum

Lilac
 Loquat
 Mahonia*
 Mimosa
 Mock Orange
 Nandina
 Oleander
 Pachysandra
 Photinia
 Picea*
 Piens
 Pine
 Poinsettia
 Pomegranate
 Poplar
 Prunus spp*
 Pseudotsuga*
 Pyracantha*
 Pyrus*
 Rhododendron*
 Rose
 Sago palm
 Schefflera
 Spirea*
 Sycamore
 Taxus*
 Thuja*
 Tsuga*
 Viburnum
 Weigelia*
 Yaupon

NOTE: Avoid alkaline water. For soil drench, buffer at pH 6.5-7.2 for best results

IMPORTANT: DYCARB® has demonstrated excellent plant safety, however, all species and varieties have not been tested. When treating large numbers of plants of a single variety, treat a few plants and observe prior to full-scale application. Do not use on Cardoon, Espisica, and Cloxin, as plant injury may occur.

For control of Black Vine Weevil larvae in container production, Mix 2 to 4 oz DYCARB® per 100 gal of water. Apply as a soil drench at the following rates only on plants indicated by*

VOLUME	CONTAINER SIZE
8 fl oz	6-inch
1 pint	1 gal
3 pints	3 gal
5 pints	5 gal

STORAGE AND DISPOSAL

STORAGE: Stable at normal temperatures. Store in a dry place.

PESTICIDE DISPOSAL: Do not contaminate water, food, or feed by storage or disposal. Wastes resulting from the use of this product may be disposed of on site or at an approved waste disposal facility.

CONTAINER DISPOSAL: Completely empty container by shaking and tapping sides and bottom to loosen clinging particles. Empty residue into application equipment. Then dispose of empty container in a sanitary landfill or by incineration, or, if allowed by state and local authorities, by burning. If burned, stay out of smoke.

NTY

in the directions for use. Timing and method of application, weather, watering practices, nature recommended, and other influencing factors in the use of this product are beyond the control of with directions given hereon. NO OTHER EXPRESS OR IMPLIED WARRANTY OF FITNESS