

56644-1

10/08/1993

REC'D REG
AFRS DEPT

OCT 18 '93

1/4



UNITED STATES ENVIRONMENTAL PROTECTION AGENCY
WASHINGTON, D.C. 20460

OCT 8 1993

Ms. Nik Ramswick
Regulatory Affairs Technician
Security Products Company of Delaware, Inc.
7801 Metro Parkway
P.O. Box 59084
Minneapolis, Minnesota 55459

OFFICE OF
PREVENTION, PESTICIDES AND
TOXIC SUBSTANCES

Dear Ms. Ramswick:

Subject: Nutonex Sulphur Wetttable
EPA Reg. No. 56644-1
Your Submission Dated July 2, 1992

The application referred to above, submitted in connection with registration under the Federal Insecticide, Fungicide and Rodenticide Act, as amended has been reviewed. You must make the labeling changes listed below.

- a. Under Precautionary Statements, delete "Avoid any contamination of feed and foodstuffs."
- b. Under Environmental Hazards, change the first sentence to "Do not apply directly to water, to areas where surface water is present or to intertidal areas below the mean high water mark."

Note that this acceptance of your label does not relieve you of your obligation to comply with the Worker Protection Standard. If any of your products are covered by this standard, you are required to submit, and receive the Agency's approval by April 21, 1994, a revised label reflecting the required label statements of 40 CFR 156, published in the **FEDERAL REGISTER** on August 21, 1992 (57 FR 38102). Further guidance will be issued. According to 40 CFR 156, subpart K "No product to which this subpart applies shall be distributed or sold without amended labeling by any registrant after April 21, 1994." Please call 1-800-777-2185 if you have any labeling questions regarding the Worker Protection Standard.



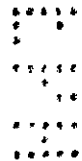
Recycled/Recyclable
Printed with Soy/Canola Ink on paper that
contains at least 50% recycled fiber

Regarding your revised basic CSF, we have routed it to the Product Chemistry Review Section for a determination as to its similarity with EPA Reg. No. 51036-14. You will be advised of the outcome of their review as soon as it is available.

Sincerely yours,



Clarence O. Lewis, III
Acting Product Manager (21)
Fungicide-Herbicide Branch
Registration Division (H7505C)

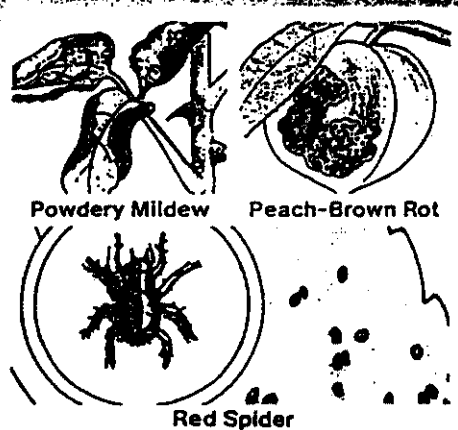




Nutonex® Sulphur Wettable

1-44925
10-10-86
Under the Federal Insecticide,
Fungicide, and Rodenticide Act
as amended, for the pesticide
registered under EPA Reg. No.
OCT 8 1993
In EPA Letter Dated
with COMMENTS
ACCEPTED

Can be Dusted or Sprayed
For Fruits, Ornamentals and Flowers



ACTIVE INGREDIENTS:
Sulfur, 90% (90%)
INERT INGREDIENTS

EPA REG. NO. 101-101
EPA EST. NO. 101-101

KEEP OUT OF REACH OF CHILDREN

CAUTION: See additional precautionary
statements on the back label

NET 1 1/4 LBS. (20 OZ.)

PRECAUTIONARY STATEMENTS
HAZARDS TO HUMANS AND DOMESTIC ANIMALS

4/4

CAUTION: Avoid any contamination of feed and foodstuffs.

STATEMENT OF PRACTICAL TREATMENT

FIRST AID: IF IN EYES: immediately flush with plenty of water for at least 15 minutes. Call a physician if irritation persists. FOR SKIN CONTACT: Wash with soap and water. IF INHALED: and overcome by vapor or dust remove immediately from exposure and call a physician. Administer artificial respiration if breathing is irregular or has stopped. IF SWALLOWED: Drink 1 or 2 glasses of water and induce vomiting by sticking finger in back of throat. Never give anything by mouth to an unconscious person. Call a physician.

ENVIRONMENTAL HAZARDS

Do not apply directly to water or swamps, bogs, marshes, and potholes. Do not contaminate water when disposing of rinsate or equipment washwater.

DIRECTIONS FOR USE

It is a violation of Federal law to use this product in a manner inconsistent with its labeling.

NOTE TO USER: Do not use this product as a feed supplement. Do not apply this material to Cucumbers, Melons, or Squash. Avoid applying this material during very hot periods of the day. PEACHES AND PLUMS: To control Brown Rot and Scab use 1 ounce (3 level tablespoons) per gallon of water (6 lbs. per 100 gal.). Follow locally issued spray schedule for number and frequency of applications. Usually 6 applications are made. No. 1—when $\frac{1}{4}$ petals have fallen. No. 2—when $\frac{1}{4}$ shucks have shed. No. 3—two weeks later. No. 4—two weeks after No. 3. No. 5—four weeks before harvest. No. 6—two weeks before harvest.

FLOWERS AND ORNAMENTALS: To control Red Spiders and the diseases listed below use Nutonex as a dust; or spray using 1 ounce (3 level tablespoons) per gallon of water (6 lbs. per 100 gal.). Applications should be made at 5 to 7 day intervals beginning when the disease first appears and continuing until all danger from the disease has passed. During periods of humid or rainy weather it may be necessary to make applications as often as every 2 to 3 days.

POWDERY MILDEW: Aster, Chrysanthemum, Cosmos, Dahlia, Daisy, Delphinium, Dogwood, Euonymus, Golden Fleece, Hibiscus, Honey-suckle, Hydrangea, Lady's Mantle, Ligustrum, Lilac, Myrtle, Philox, Poplar, Silver Vine, Rose, Spiraea, Sunflower, Verbena, Willow and Zinnia. LEAF SPOTS: Calendula, Cherry Laurel, Clematis, Columbine, English Ivy, Foxgloves, Hydrangea, Petunia, Philox, Sage, Smilac and Snapdragon.

BLACK SPOT: Rose.

ROSE POWDERY MILDEW: Rose.

BOTRYTIS BLIGHT: Hydrangea.

RED SPIDERS: Arborvitae, Carnation, Cedars, Chrysanthemum, Clematis, Hydrangea, Rose, Snapdragon and Sweetpeas.

STORAGE AND DISPOSAL

Do not contaminate water, food or feed by storage or disposal. Store pesticide in original container and place in a locked storage area. Do not reuse container. Securely wrap original container in several layers of newspaper and discard in trash.

NOTICE: Buyer assumes all responsibility for safety and use not in accordance with the directions.

Distributed By:
Security Products Company of Delaware, Inc.
Minneapolis, Minnesota 55459