

56336-59

8/24/2010

1 of 2

AUG 24 2010

Richard W. Fresh
Director Regulatory Affairs
Suterra LLC
20950 North East Talus Place
Bend, Oregon 97701

Subject: CheckMate LBAM-F
EPA Registration No. 56336-59
Label Amendments to update the Precautionary Statements Required for California and to update the Storage and Disposal Statement
Decision # 433803
Application Dated: May 17, 2010

Dear Mr. Fresh:

The amendment referred to above, submitted in connection with registration under FIFRA section 3(c)(5), is acceptable provided that you:

1. Submit and/or cite all data required for registration/reregistration of your product under FIFRA section 3(c)(5) when the Agency requires all registrants of similar products to submit such data.
2. Submit three (3) copies of your final printed labeling before you release the product for shipment. Final printed labeling means the label or labeling of the product when distributed or sold. Clearly legible reproductions or photo reductions will be accepted for unusual labels, such as those silk-screened directly onto glass or metal containers or large bags or drum labels.

If these conditions are not complied with, the registration will be subject to cancellation in accordance with FIFRA section 6(b). Your release for shipment of the product bearing the amended labeling constitutes acceptance of these conditions.

If you have any questions contact Ms. Menyon Adams at 703-347-8496 or by email at: adams.menyon@epa.gov. A stamped copy of the label is enclosed for your records.

Sincerely,

Linda A. Hollis, Chief
Biochemical Pesticides Branch

CONCURRENCES
Biochemical Pesticides and Pollution

| | | | | | | | |
|--------|------------|--|--|--|--|--|--|
| YMBOL | ▶ 7511P | | | | | | |
| JRNAME | ▶ Adams | | | | | | |
| ATE | ▶ 06/03/10 | | | | | | |

KEEP OUT OF REACH OF CHILDREN

CAUTION

FIRST AID STATEMENT

IF SWALLOWED: Call a Poison Control Center or doctor immediately for treatment advice. Have person sip a glass of water if able to swallow. Do not induce vomiting unless told to by a Poison Control Center or doctor. Do not give anything by mouth to an unconscious person.

IF ON SKIN: Take off contaminated clothing. Rinse skin immediately with plenty of water for 15-20 minutes. Call a Poison Control Center or doctor immediately for treatment advice. Prolonged or frequently repeated skin contact may cause allergic reactions in some individuals.

IF IN EYES: Hold eye(s) open and rinse slowly and gently with water for 15-20 minutes. Remove contact lenses, if present, after the first 5 minutes, and continue rinsing. Call a Poison Control Center or doctor for treatment advice.

HOT LINE NUMBER

Have the product container or label with you when calling a Poison Control Center or doctor, or going for treatment. You may contact Suterra at 1-866-326-6737 for emergency medical information. Hours of operation are Monday through Friday 9:00 AM to 5:00 PM Pacific Standard Time (PST). You may also call the National Pesticide Information Center at 1-800-858-7378, 6:30 AM to 4:30 PM PST, seven days a week. During other times, call the Poison Control Center at 1-800-222-1222.

PRECAUTIONARY STATEMENTS

HAZARD TO HUMANS AND DOMESTIC ANIMALS

Caution: Harmful if swallowed. Avoid contact with skin, eyes or clothing. Prolonged or frequently repeated skin contact may cause allergic reactions in some individuals. Remove contaminated clothing and wash before reuse. Wash thoroughly with soap and water after handling and before eating, drinking, chewing gum or using tobacco.

Personal Protective Equipment (PPE): Applicators and handlers must wear: Coveralls, short or long sleeve shirt and short or long pants, shoes and socks, and waterproof gloves.

Follow manufacturer's instructions for cleaning and maintaining PPE. If no such instructions for washables, use detergent and hot water. Keep and wash PPE separately from other laundry.

USER SAFETY RECOMMENDATIONS

Users should remove clothing/PPE immediately if pesticide gets inside. Then wash thoroughly and put on clean clothing.

Users should remove PPE immediately after handling this product. Wash the outside of gloves before removing. As soon as possible, wash thoroughly and change into clean clothing.

ENVIRONMENTAL HAZARD

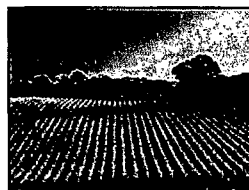
Do not apply directly to water, or to areas where surface water is present, or to intertidal areas below the mean high water mark. Do not contaminate water by cleaning of equipment or disposing of equipment washwaters or rinsate.

WARRANTY

To the extent consistent with applicable law, Suterra LLC warrants that this material conforms to the chemical description on the label and is reasonably fit for the purposes stated in the Directions for Use. To the extent consistent with applicable law, Suterra neither makes nor authorizes any agent or representative to make any other warranty of fitness or of merchantability, guarantee or representation, express or implied, concerning this material. To the extent consistent with applicable law, Suterra's maximum liability for breach of this warranty shall not exceed the purchase price of this product. To the extent consistent with applicable law, the buyer and user acknowledge and assume all risks and liabilities resulting from the handling, storage, and use of this material contrary to label instructions.

CheckMate® LBAM-F

**A BIOCHEMICAL FOR
MATING DISRUPTION OF
LIGHT BROWN APPLE MOTH
(*Epiphyas postvittana*)**



ACTIVE INGREDIENTS:

| | |
|---|----------|
| (E)-11-Tetradecen-1-yl acetate | 16.33 % |
| (E,E)-9,11-Tetradecadien-1-yl acetate | 0.86 % |
| OTHER INGREDIENTS | 82.81 % |
| TOTAL | 100.00 % |

Manufactured by:

Suterra®

Suterra LLC
20950 NE Talus Place
Bend, Oregon 97701 U.S.A.
Phone: (866) 326-6737
Fax: (541) 388-3705

Net Contents: XXX fl. oz. (yyy ml)

Contains: 4.932 g/a.i./fl. oz. (0.167 g/a.i./ml)

EPA Reg. No. 56336-59

EPA Est. No. 56336-OR-1

Batch Code.: See Neck of Bottle

lbam#7 08/2010 14532

DIRECTIONS FOR USE

IT IS A VIOLATION OF FEDERAL LAW TO USE THIS PRODUCT IN A MANNER INCONSISTENT WITH ITS LABELING

Do not apply this product in a way that will contact workers or other persons, either directly or through drift. Only protected handlers may be in the area during application. For requirements specific to your state or Tribe, consult the State or Tribal agency responsible for pesticide regulation.

AGRICULTURAL USE REQUIREMENTS

Use this product only in accordance with its labeling and with the Worker Protection Standard, 40 CFR part 170. This Standard contains requirements for the protection of agricultural workers on farms, forests, nurseries, and greenhouses, and handlers of agricultural pesticides. It contains requirements for training, decontamination, notification, and emergency assistance. It also contains specific instructions and exceptions pertaining to the statements on this label about personal protective equipment (PPE) and the restricted-entry interval. The requirements in this box apply to uses of this product that are covered by the Worker Protection Standard. Do not enter or allow worker entry into treated areas during application of this product. Do not enter or allow entry into treated areas during restricted entry interval (REI) of 4 hours. PPE required for early entry to treated areas is permitted under the Worker Protection Standard and that involves contact with anything that has become treated, such as plants, soil or water. PPE: coveralls, short or long sleeve shirt, short or long pants, shoes, socks and waterproof gloves.

METHOD OF APPLICATION: To disrupt mating of the light brown apple moth found on agricultural, forestry and nursery crops apply CheckMate® LBAM-F at 3.04 fluid ounces (89.9 ml) product per acre [15 g a.i./acre] to 4.05 fluid ounces (119.8 ml) product per acre [20 g a.i./acre]. Do not exceed 30.4 fluid ounces (898.0 ml) product/acre/year [150 g/a.i./acre/year].

SHAKE WELL BEFORE USING

DO NOT use CheckMate LBAM-F from damaged, punctured, or unsealed containers. Use piston, diaphragm, or centrifugal pumps ONLY. DO NOT use roller or gear pumps as they will damage the CheckMate LBAM-F controlled release system. DO NOT use strainers or screens in spray equipment with openings smaller than 50 mesh. For best results, apply immediately after mixing. Do not let stand prior to application without thoroughly mixing again. Do not apply this product through any type of irrigation system.

Ground Equipment: Apply CheckMate LBAM-F in sufficient water for uniform coverage

Do not apply to point of runoff. Apply to foliage directly.

Aerial Equipment for Agricultural and Forestry Applications Only: Apply CheckMate LBAM-F in sufficient water for uniform coverage.

APPLICATION NOTES: Reapply as needed based on insect monitoring and field scouting programs. Use approved stickers for improved adherence to the leaf surface and protection from rainfall. In the event of rain, re-treatment is necessary if approved stickers are not used. Do not apply this product in fields with overhead irrigation. This product only affects adult male moths and will have no effect on female moths, eggs or larvae. If application occurs following biofix or during the growing season, the field must be treated with insecticide treatments that will effectively control hatching larvae until egg laying by previously mated female moths has ceased to occur. In moderate to high insect pressure situations, supplemental insecticide applications during the season can be necessary to provide adequate protection to the developing crop. Make these supplemental insecticide applications based on trap monitoring, field scouting, and appropriate degree-day models for the local growing area and must be timed to control emerging larvae.

STORAGE AND DISPOSAL

DO NOT contaminate water, food, or feed by storage or disposal.

PESTICIDE STORAGE: Store in a cool place until used. Reseal containers immediately after use. Protect from freezing.

PESTICIDE DISPOSAL: Wastes resulting from the use of this product may be disposed of on site or at an approved waste disposal facility.

CONTAINER DISPOSAL: Plastic Containers: Nonrefillable container. Do not reuse or refill this container. Triple rinse (or equivalent). Then offer for recycling or reconditioning or puncture and dispose of in a sanitary landfill, or incineration, or, if allowed by state and local authorities, by burning. If burned stay out of smoke.

ACCEPTED

AUG 24 2010

Under the Federal Insecticide, Fungicide,
and Rodenticide Act, as amended, for
the pesticide registered under
EPA Reg. No. 56336-59

2012